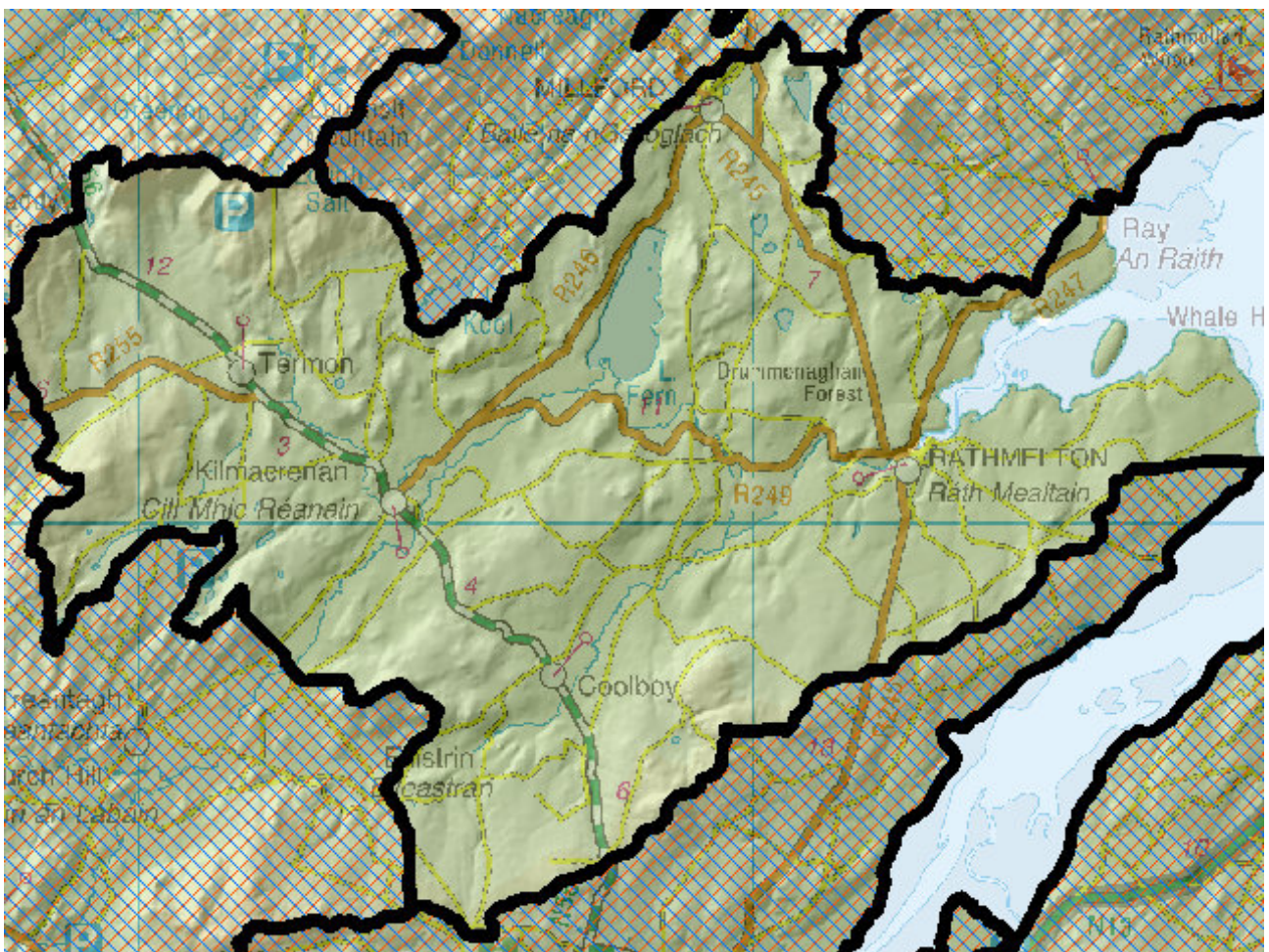


WFD Cycle 2

Catchment Lough Swilly

Subcatchment Leannan_SC_020

Code 39_5



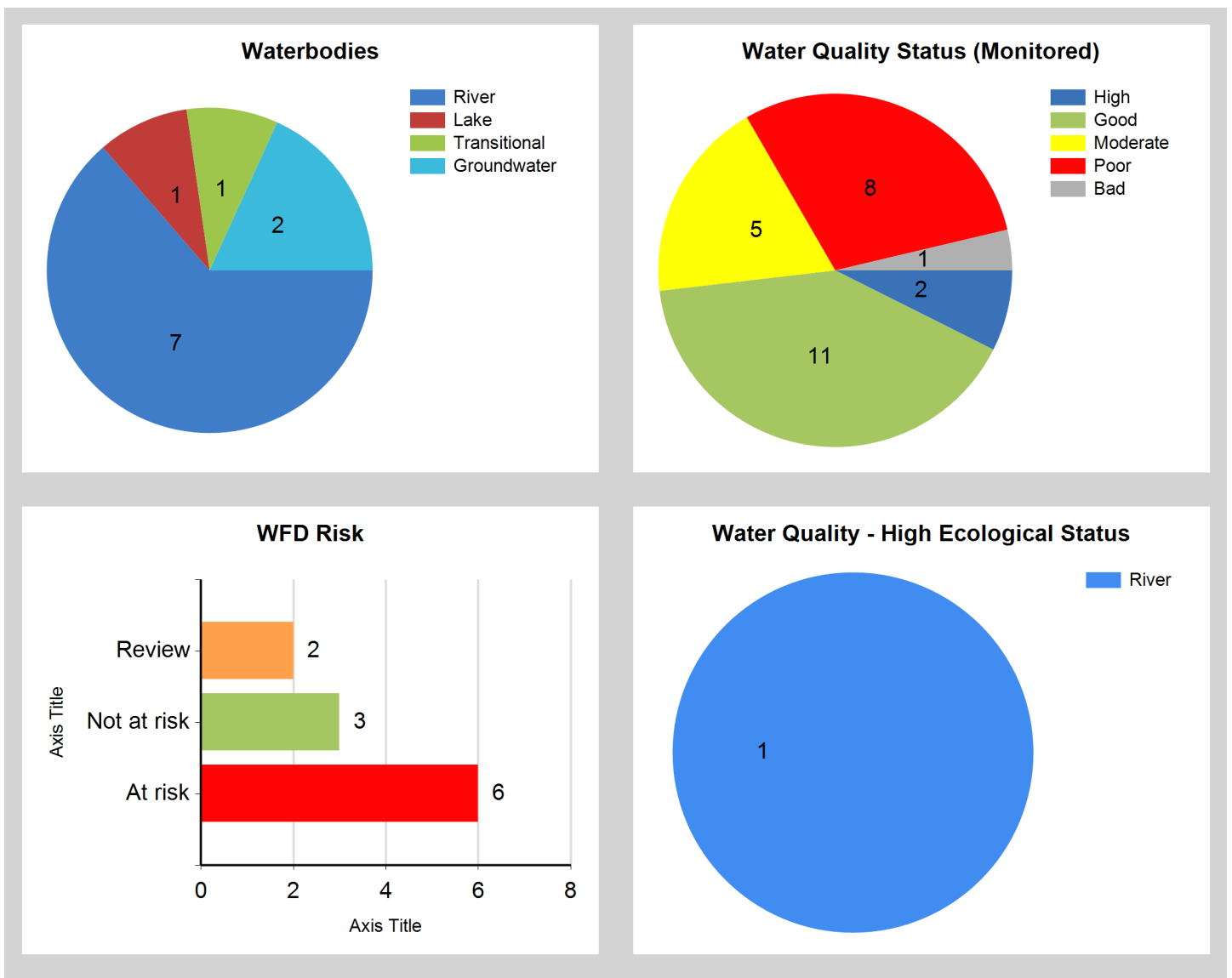
© Ordnance Survey Ireland. All rights reserved. Licence Number EN 0059208

Generated on: 07 Nov 2018

Assessment Purpose

This assessment has been produced as part of the national characterisation programme undertaken for the second cycle of Water Framework Directive river basin management planning. It has been led by the EPA, with input from Local Authorities and other public bodies, and with support from RPS consultants.

The characterisation assessments are automatically generated from the information stored in the WFD Application. They are based on information available to the end of 2015 but may be subject to change until the final 2018-21 river basin management plan is published. Users should ensure that they have the most up to date information by downloading the latest assessment before use.

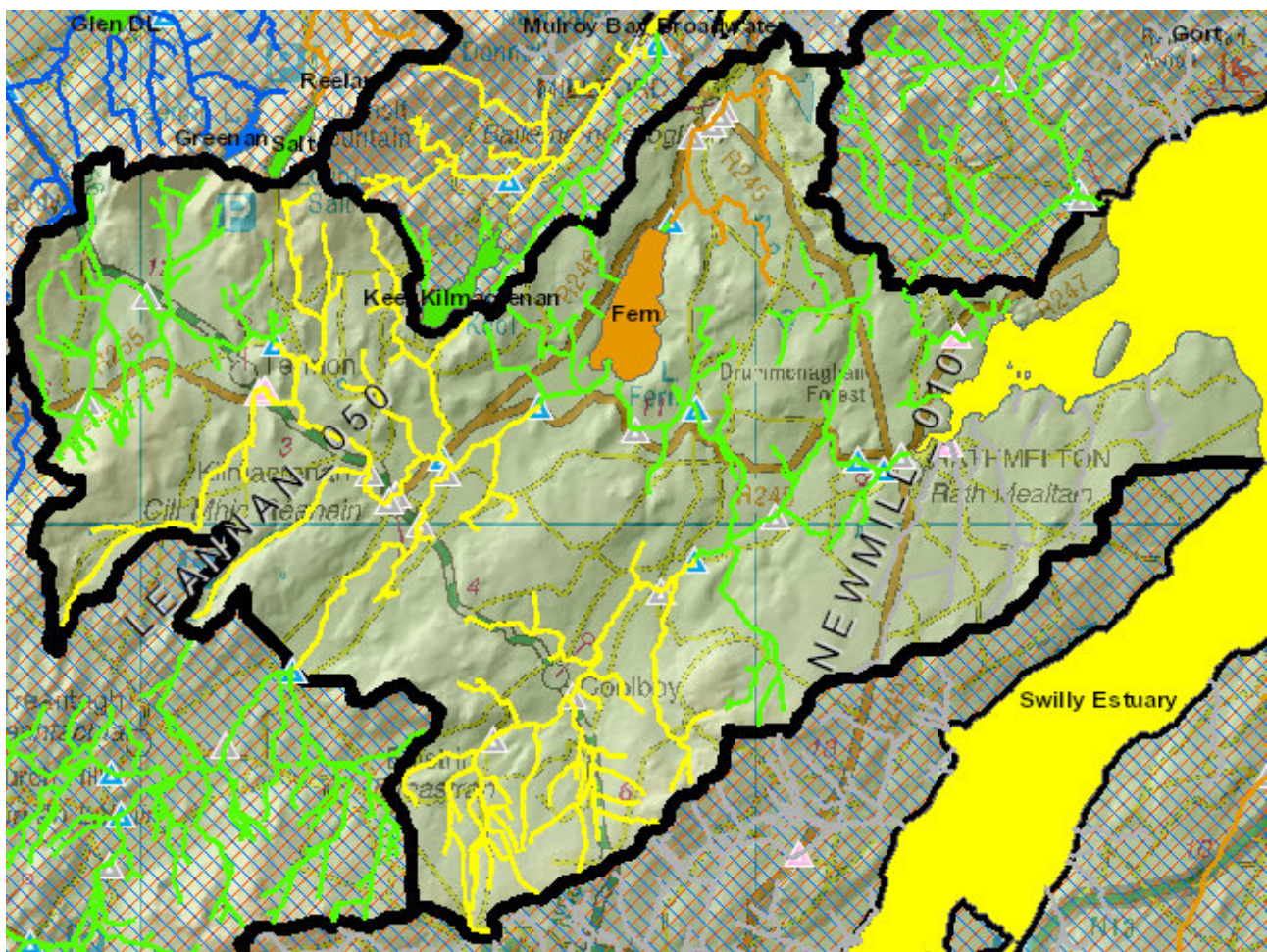


River And Lake Waterbodies: WFD Risk

The following river and lake waterbodies are in the subcatchment.

Code	Name	Type	WFD Risk	Significant Pressure
IE_NW_39_13	Fern	Lake	At risk	Yes
IE_NW_39G020200	GLASHAGH (LOWER)_010	River	At risk	Yes
IE_NW_39L010500	LEANNAN_050	River	At risk	Yes
IE_NW_39L012000	CARN LOW_010	River	At risk	Yes
IE_NW_39M010300	MAGGY'S BURN_010	River	At risk	Yes
IE_NW_39N050990	NEWMILL_010	River	Review	No

Map Subcatchment Water Quality Status Map



River And Lake Waterbodies: Water Quality Status

The water quality status of river and lake waterbodies in the subcatchment is as follows.

Code	Name	Type	2007-09	2010-12	2010-15
IE_NW_39L012000	CARN LOW_010	River	High	High	Good
IE_NW_39_13	Fern	Lake	Poor	Poor	Poor
IE_NW_39G020200	GLASHAGH (LOWER)_010	River	Unassigned	Poor	Moderate
IE_NW_39L010500	LEANNAN_050	River	Poor	Moderate	Moderate
IE_NW_39L010600	LEANNAN_060	River	Good	Good	Good
IE_NW_39L020100	LURGY_010	River	Good	Good	Good
IE_NW_39M010300	MAGGY'S BURN_010	River	Poor	Bad	Poor
IE_NW_39N050990	NEWMILL_010	River	Unassigned	Unassigned	Unassigned

Potentially Dependent Transitional and Coastal Waterbodies

The Transitional and Coastal waterbodies listed below intersect spatially with river and lake waterbodies in the subcatchment ...

Code	Name	Type	Local Authority	WFD Risk
IE_NW_220_0100	Swilly Estuary	Transitional	Donegal County Council	At risk

Potentially Dependent Groundwater Waterbodies

The groundwaters listed below intersect spatially with river and lake waterbodies in the subcatchment ...

Code	Name	Type	Local Authority	WFD Risk
IE_NW_G_049	Northwest Donegal	Groundwater	Donegal County Council	Review
IEGBNI_NW_G_05 9	Lough Swilly	Groundwater	Donegal County Council	Not at risk

Protected Areas intersecting River and Lake Waterbodies

The Protected Areas listed below intersect spatially with river and lake waterbodies in the subcatchment ...

Code	Name	Type	Waterbody Name	Association Type
IE0002287	Lough Swilly SAC	SAC	CARN LOW_010	Overlapping / partly within Protected Area
IE0002287	Lough Swilly SAC	SAC	NEWMILL_010	Overlapping / partly within Protected Area
IE0004075	Lough Swilly SPA	SPA	NEWMILL_010	Overlapping / partly within Protected Area
IE0004075	Lough Swilly SPA	SPA	CARN LOW_010	Overlapping / partly within Protected Area
IEPA2_0042	Lough Swilly	Shellfish Area	NEWMILL_010	Overlapping / partly within Protected Area
IEPA5D0015	River Glashagh Lower	Salmonid	CARN LOW_010	Overlapping / partly within Protected Area
IEPA5D0015	River Glashagh Lower	Salmonid	GLASHAGH (LOWER)_010	Overlapping / partly within Protected Area
IEPA5D0020	River Leannan	Salmonid	LEANNAN_050	Overlapping / partly within Protected Area
IEPA5D0020	River Leannan	Salmonid	LEANNAN_060	Overlapping / partly within Protected Area
IEPA5D0020	River Leannan	Salmonid	CARN LOW_010	Overlapping / partly within Protected Area
IEPA5D0021	River Lurgy	Salmonid	LURGY_010	Overlapping / partly within Protected Area
IEPA5D0021	River Lurgy	Salmonid	LEANNAN_050	Overlapping / partly within Protected Area
IEPA5D0022	River Maggisburn	Salmonid	LEANNAN_060	Overlapping / partly within Protected Area
IEPA5D0022	River Maggisburn	Salmonid	MAGGY'S BURN_010	Overlapping / partly within Protected Area

Pressures

Below is a list of all significant pressures identified in the subcatchment.

Code	Name	WFD Risk	Pressure Category	Pressure Sub Category
IE_NW_220_0100	Swilly Estuary	At risk	Urban Waste Water	Combined Sewer Overflows
IE_NW_220_0100	Swilly Estuary	At risk	Urban Run-off	Diffuse Sources Run-Off
IE_NW_220_0100	Swilly Estuary	At risk	Domestic Waste Water	Waste Water discharge
IE_NW_39_13	Fern	At risk	Urban Waste Water	Agglomeration PE of 1,001 to 2,000
IE_NW_39G020200	GLASHAGH (LOWER)_010	At risk	Agriculture	Agriculture
IE_NW_39G020200	GLASHAGH (LOWER)_010	At risk	Domestic Waste Water	Waste Water discharge
IE_NW_39L010500	LEANNAN_050	At risk	Urban Waste Water	Agglomeration PE < 500
IE_NW_39L010500	LEANNAN_050	At risk	Urban Waste Water	Agglomeration PE of 500 to 1,000
IE_NW_39L012000	CARN LOW_010	At risk	Agriculture	Agriculture
IE_NW_39L012000	CARN LOW_010	At risk	Urban Waste Water	Agglomeration PE of 1,001 to 2,000
IE_NW_39M010300	MAGGY'S BURN_010	At risk	Urban Waste Water	Agglomeration PE of 1,001 to 2,000
IE_NW_G_049	Northwest Donegal	Review	Anthropogenic Pressures	Unknown

Further Characterisation Actions

The following further characterisation actions have been identified. These are necessary to help understand more fully issues in the subcatchment and their likely cause.

Code	Name	Action	Responsible Organisation
IE_NW_39L010500	LEANNAN_050	IA1 Provision of Information	Donegal County Council
IE_NW_39L010500	LEANNAN_050	IA1 Provision of Information	Irish Water
IE_NW_39N050990	NEWMILL_010	IA3 Determination of Water Quality (unassigned waterbody)	Donegal County Council
IE_NW_39G020200	GLASHAGH (LOWER)_010	IA5 Multiple Sources in defined rural area (1km) or waterbody or rural town	Donegal County Council
IE_NW_39M010300	MAGGY'S BURN_010	IA1 Provision of Information	Irish Water
IE_NW_39L012000	CARN LOW_010	IA8 High status RWB pressures	Donegal County Council
IE_NW_39_13	Fern	IA1 Provision of Information	Donegal County Council