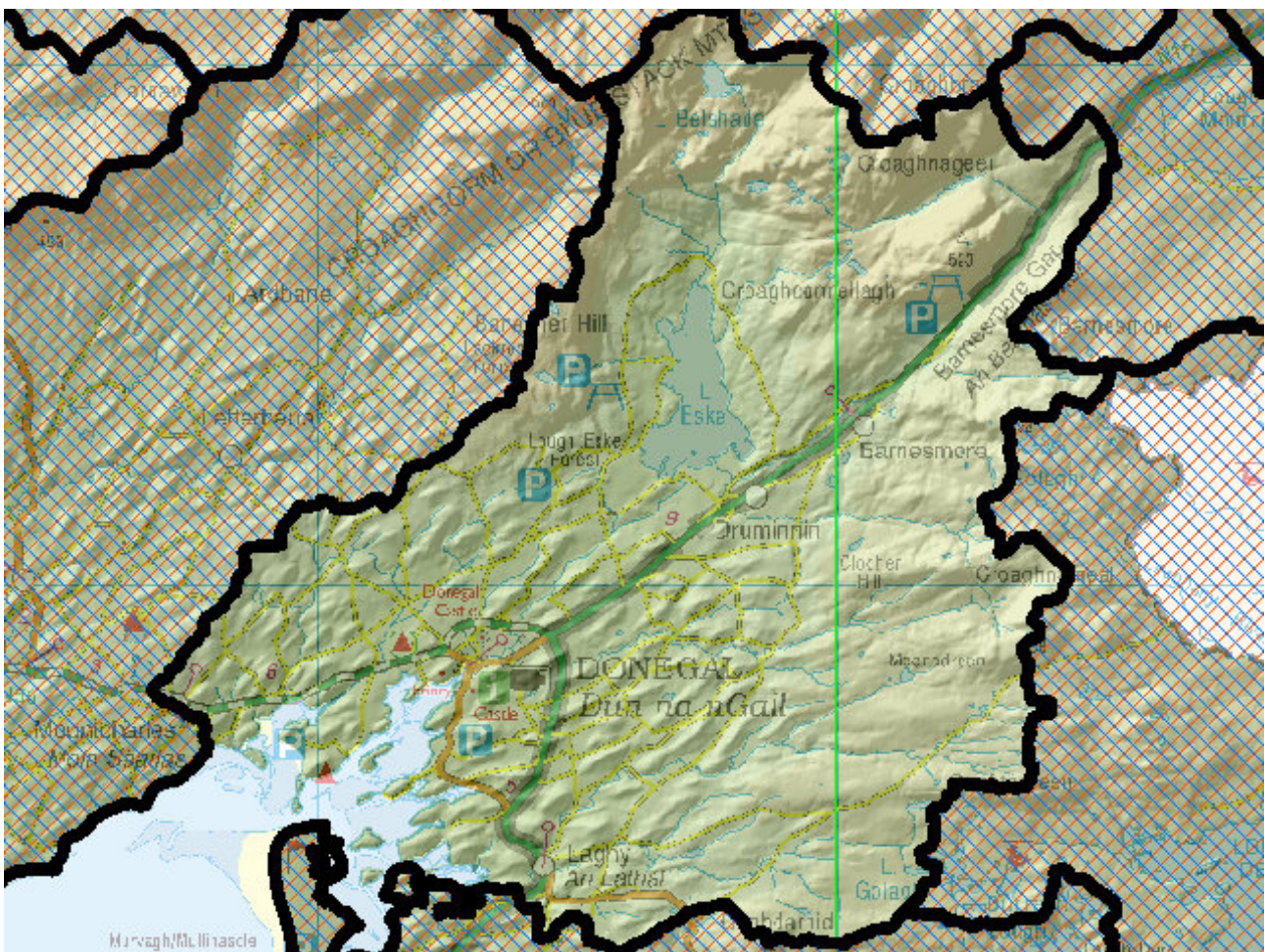


WFD Cycle 2

Catchment Donegal Bay North

Subcatchment Eske_SC_010

Code 37_2



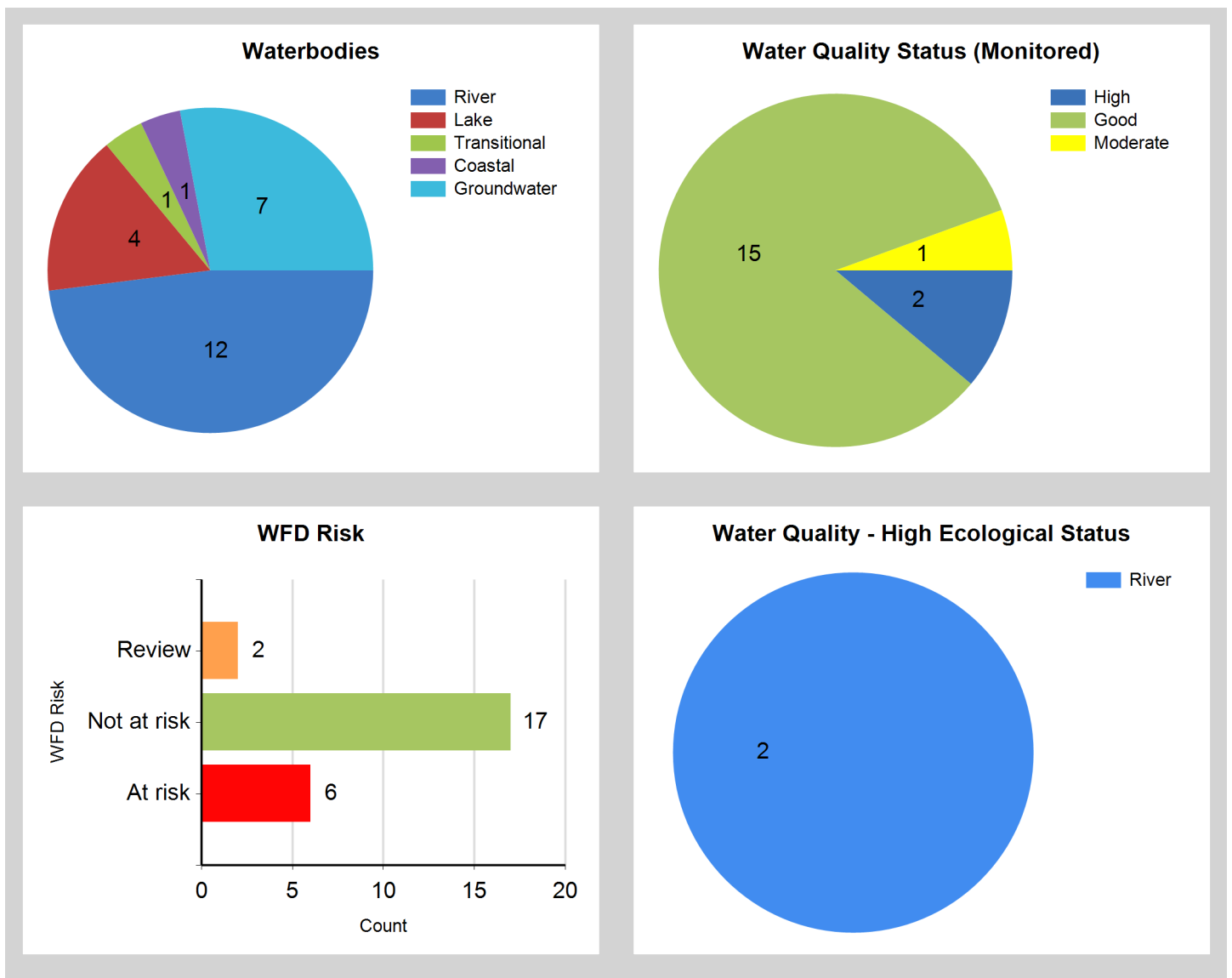
© Ordnance Survey Ireland. All rights reserved. Licence Number EN 0059208

Generated on: 28 Feb 2020

Assessment Purpose

This assessment has been produced as part of the national characterisation programme undertaken for the Water Framework Directive river basin management planning. It has been led by the EPA, with input from Local Authorities and other public bodies.

The characterisation assessments are automatically generated from the information stored in the WFD Application. The assessments may change as information is updated in the WFD application. Users should ensure that they have the most up to date information by downloading the latest assessment before use.



Evaluation of Priority Subcatchment Issues

Six of the sixteen water bodies (12 river and 4 lake water bodies) in subcatchment 37_2 are AT RISK. Corrabber_010 is AT RISK as it has been identified as a High Ecological Status Objective water body and the Ecological Status dropped from High in 2007-2009 and 2010-2012 monitoring cycles to Good in 2013-2015 with invertebrate status being the driver. Forestry has been identified as the significant pressure in this water body. Four other river water bodies, Lowerymore_010, Clogher (Donegal)_010, Eske_010 and Laghy Stream_010 are also AT RISK due to less than Good Ecological Status in 2013-2015 with forestry also being identified as the significant pressure in the case of Lowerymore_010, Clogher (Donegal)_010 and Eske_010 while no significant pressure could be identified in the case of Laghy Stream_010 and local catchment assessment will be required to identify the pressure.

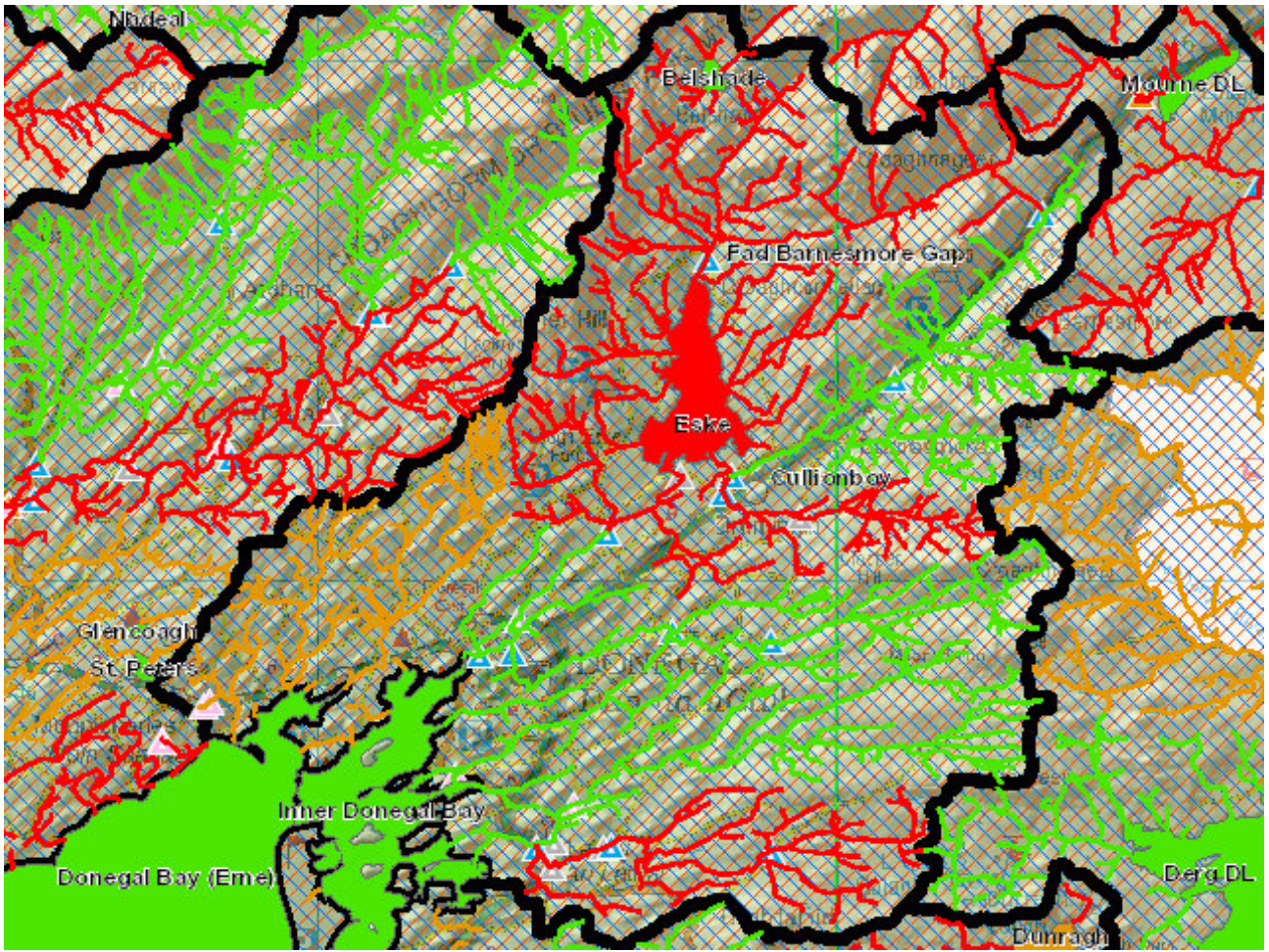
Eske (Lough) is AT RISK due to less than Good Ecological status in the same monitoring period having been Good in 2007-2009 and 2010-2012. This deterioration was driven by Macrophytes and other Aquatic flora and agriculture has been identified as the significant pressure.

Letrim Hill Stream_010 is unmonitored therefore no ecological status is assigned, this water bodies has been placed in REVIEW as a result of urban wastewater treatment pressures.

Lowerymore_020 also has a High Ecological Status Objective and maintained its High status in 2013-2015 and as such is NOT AT RISK. Lowerymore_030 and Eske_020 maintained their respective Good Ecological Status while Drummeny_010 Ecological status returned to Good in 2013-2015 and therefore all three river water bodies are NOT AT RISK.

The remaining five water bodies, Belshade (Lough), Cullionboy Lough, Fad (Lough), Clarcarrickngun_010 and Ballykillowen Stream_010 are unmonitored therefore no ecological status is assigned. These water bodies are NOT AT RISK due to a lack of significant pressures.

Map Subcatchment Risk Map



River And Lake Waterbodies: WFD Risk

The following river and lake waterbodies are in the subcatchment.

Code	Name	Type	WFD Risk	Significant Pressure
IE_NW_37_188	Eske	Lake	At risk	Yes
IE_NW_37C010100	CORABBER_010	River	At risk	Yes
IE_NW_37C060400	CLOGHER (DONEGAL)_010	River	At risk	Yes
IE_NW_37E050200	ESKE_010	River	At risk	Yes
IE_NW_37L010100	LOWERYMORE_010	River	At risk	Yes
IE_NW_37L020600	LAGHY STREAM_010	River	At risk	Yes
IE_NW_37L370150	Leitrim Hill Stream_010	River	Review	Yes
IE_NW_37_180	Belshade	Lake	Not at risk	No
IE_NW_37_210	Cullionboy	Lake	Not at risk	No
IE_NW_37_22	Fad Barnesmore Gap	Lake	Not at risk	No
IE_NW_37B050590	BALLYKILLOWEN STREAM_010	River	Not at risk	No
IE_NW_37C240980	CLARCARRICKNAGUN_ 010	River	Not at risk	Yes
IE_NW_37D010400	DRUMMENY_010	River	Not at risk	No
IE_NW_37E050400	ESKE_020	River	Not at risk	No
IE_NW_37L010300	LOWERYMORE_020	River	Not at risk	No
IE_NW_37L010400	LOWERYMORE_030	River	Not at risk	No

River And Lake Waterbodies: Water Quality Status

The water quality status of river and lake waterbodies in the subcatchment is as follows.

Name	2007-09	2010-12	2010-15	2013-18
BALLYKILLOWEN STREAM_010	Unassigned	Unassigned	Unassigned	Unassigned
Belshade	Unassigned	Unassigned	Unassigned	Unassigned
CLARCARRICKNAGUN_010	Unassigned	Unassigned	Unassigned	Unassigned
CLOGHER (DONEGAL)_010	Moderate	High	Poor	Good
CORABBER_010	High	High	Good	Good
Cullionboy	Unassigned	Unassigned	Unassigned	Unassigned
DRUMMENY_010	Good	Poor	Good	Good
Eske	Good	Good	Moderate	Good
ESKE_010	Good	Good	Moderate	Good
ESKE_020	Moderate	Good	Good	Good
Fad Barnesmore Gap	Unassigned	Unassigned	Unassigned	Unassigned
LAGHY STREAM_010	Moderate	Good	Moderate	Moderate
Leitrim Hill Stream_010	Unassigned	Unassigned	Unassigned	Unassigned
LOWERYMORE_010	Good	Good	Poor	Good
LOWERYMORE_020	Unassigned	High	High	High
LOWERYMORE_030	Good	Good	Good	High

Potentially Dependent Transitional and Coastal Waterbodies

The Transitional and Coastal waterbodies listed below intersect spatially with river and lake waterbodies in the subcatchment ...

Code	Name	Type	Local Authority	WFD Risk
IE_NW_010_0000	Donegal Bay (Erne)	Coastal	Donegal County Council	Not at risk
IE_NW_050_0100	Inner Donegal Bay	Transitional	Donegal County Council	Not at risk

Potentially Dependent Groundwater Waterbodies

The groundwaters listed below interset spatially with river and lake waterbodies in the subcatchment ...

Code	Name	Type	Local Authority	WFD Risk
IE_NW_G_047	Donegal South	Groundwater	Donegal County Council	Not at risk
IE_NW_G_067	Frosses	Groundwater	Donegal County Council	Not at risk
IE_NW_G_069	Doorin Point	Groundwater	Donegal County Council	Not at risk
IE_NW_G_070	Inver-Banagher Hill	Groundwater	Donegal County Council	Not at risk
IE_NW_G_070	Inver-Banagher Hill	Groundwater	Donegal County Council	Review
IE_NW_G_071	Donegal-Ballintra	Groundwater	Donegal County Council	Not at risk
IEGBNI_NW_G_00 5	Castledearg	Groundwater	Donegal County Council	Not at risk
IEGBNI_NW_G_04 8	Ballybofey	Groundwater	Donegal County Council	Not at risk

Protected Areas intersecting River and Lake Waterbodies

The Protected Areas listed below intersect spatially with river and lake waterbodies in the subcatchment ...

Code	Name	Type	Waterbody Name	Association Type
IEPA1_NW_37_188	Eske	Drinking Water	Eske	Within Protected Area
IEPA1_NW_37_188	Eske	Drinking Water	ESKE_010	Within Protected Area
IEPA1_NW_G_005	Castledearg	Drinking Water	LOWERYMORE_020	Within Protected Area
IEPA1_NW_G_047	Donegal South	Drinking Water	Belshade	Within Protected Area
IEPA1_NW_G_047	Donegal South	Drinking Water	Eske	Within Protected Area
IEPA1_NW_G_047	Donegal South	Drinking Water	Cullionboy	Within Protected Area
IEPA1_NW_G_047	Donegal South	Drinking Water	Fad Barnesmore Gap	Within Protected Area
IEPA1_NW_G_047	Donegal South	Drinking Water	BALLYKILLOWEN STREAM_010	Within Protected Area
IEPA1_NW_G_047	Donegal South	Drinking Water	CORABBER_010	Within Protected Area
IEPA1_NW_G_047	Donegal South	Drinking Water	CLOGHER (DONEGAL)_010	Within Protected Area
IEPA1_NW_G_047	Donegal South	Drinking Water	CLARCARRICKNAGUN _010	Within Protected Area
IEPA1_NW_G_047	Donegal South	Drinking Water	DRUMMENY_010	Within Protected Area
IEPA1_NW_G_047	Donegal South	Drinking Water	ESKE_010	Within Protected Area
IEPA1_NW_G_047	Donegal South	Drinking Water	ESKE_020	Within Protected Area
IEPA1_NW_G_047	Donegal South	Drinking Water	LOWERYMORE_010	Within Protected Area
IEPA1_NW_G_047	Donegal South	Drinking Water	LOWERYMORE_020	Within Protected Area
IEPA1_NW_G_047	Donegal South	Drinking Water	LOWERYMORE_030	Within Protected Area
IEPA1_NW_G_047	Donegal South	Drinking Water	LAGHY STREAM_010	Within Protected Area
IEPA1_NW_G_067	Frosses	Drinking Water	Leitrim Hill Stream_010	Within Protected Area
IEPA1_NW_G_069	Doorin Point	Drinking Water	ESKE_020	Within Protected Area
IEPA1_NW_G_069	Doorin Point	Drinking Water	Leitrim Hill Stream_010	Within Protected Area
IEPA1_NW_G_070	Inver-Banagher Hill	Drinking Water	Eske	Within Protected Area
IEPA1_NW_G_070	Inver-Banagher Hill	Drinking Water	CORABBER_010	Within Protected Area
IEPA1_NW_G_070	Inver-Banagher Hill	Drinking Water	ESKE_010	Within Protected Area
IEPA1_NW_G_070	Inver-Banagher Hill	Drinking Water	Leitrim Hill Stream_010	Within Protected Area
IEPA1_NW_G_071	Donegal-Ballintra	Drinking Water	BALLYKILLOWEN STREAM_010	Within Protected Area
IEPA1_NW_G_071	Donegal-Ballintra	Drinking Water	CLARCARRICKNAGUN _010	Within Protected Area
IEPA1_NW_G_071	Donegal-Ballintra	Drinking Water	DRUMMENY_010	Within Protected Area
IEPA1_NW_G_071	Donegal-Ballintra	Drinking Water	ESKE_010	Within Protected Area
IEPA1_NW_G_071	Donegal-Ballintra	Drinking Water	ESKE_020	Within Protected Area
IEPA1_NW_G_071	Donegal-Ballintra	Drinking Water	LAGHY STREAM_010	Within Protected Area
IEPA1_NW_G_071	Donegal-Ballintra	Drinking Water	Leitrim Hill Stream_010	Within Protected Area

Pressures

Below is a list of all significant pressures identified in the subcatchment.

Code	Name	WFD Risk	Pressure Category	Pressure Sub Category	Created In
IE_NW_37C060400	CLOGHER (DONEGAL)_010	At risk	Anthropogenic Pressures	Unknown	WFD Cycle 2
IE_NW_37L370150	Leitrim Hill Stream_010	Review	Urban Waste Water	Agglomeration PE of 500 to 1,000	WFD Cycle 2
IE_NW_37L010100	LOWERYMORE_010	At risk	Forestry	Forestry	WFD Cycle 2
IE_NW_37L020600	LAGHY STREAM_010	At risk	Anthropogenic Pressures	Unknown	WFD Cycle 2
IE_NW_37L010100	LOWERYMORE_010	At risk	Agriculture	Pasture	WFD Cycle 2
IE_NW_37C010100	CORABBER_010	At risk	Forestry	Forestry	WFD Cycle 2
IE_NW_37_188	Eske	At risk	Agriculture	Agriculture	WFD Cycle 2
IE_NW_G_070	Inver-Banagher Hill	Review	Anthropogenic Pressures	Unknown	WFD Cycle 2
IE_NW_37E050200	ESKE_010	At risk	Forestry	Forestry	WFD Cycle 2

Further Characterisation Actions

The following further characterisation actions have been identified. These are necessary to help understand more fully issues in the subcatchment and their likely cause.

Code	Name	Action	Responsible Organisation	Created In
IE_NW_37L020600	LAGHY STREAM_010	IA5 Multiple Sources in defined rural area (1km) or waterbody or rural town	Local Authority Waters Programme (LAWPRO)	WFD Cycle 2
IE_NW_37C010100	CORABBER_010	IA8 High status RWB pressures	Local Authority Waters Programme (LAWPRO)	WFD Cycle 2
IE_NW_37L370150	Leitrim Hill Stream_010	IA5 Multiple Sources in defined rural area (1km) or waterbody or rural town	Donegal County Council	WFD Cycle 2
IE_NW_37C060400	CLOGHER (DONEGAL)_010	IA5 Multiple Sources in defined rural area (1km) or waterbody or rural town	Local Authority Waters Programme (LAWPRO)	WFD Cycle 2
IE_NW_37L370150	Leitrim Hill Stream_010	IA1 Provision of Information	Irish Water	WFD Cycle 2
IE_NW_37L010100	LOWERYMORE_010	IA5 Multiple Sources in defined rural area (1km) or waterbody or rural town	Local Authority Waters Programme (LAWPRO)	WFD Cycle 2
IE_NW_37E050200	ESKE_010	IA5 Multiple Sources in defined rural area (1km) or waterbody or rural town	Local Authority Waters Programme (LAWPRO)	WFD Cycle 2
IE_NW_37_188	Eske	IA1 Provision of Information	Environmental Protection Agency	WFD Cycle 2