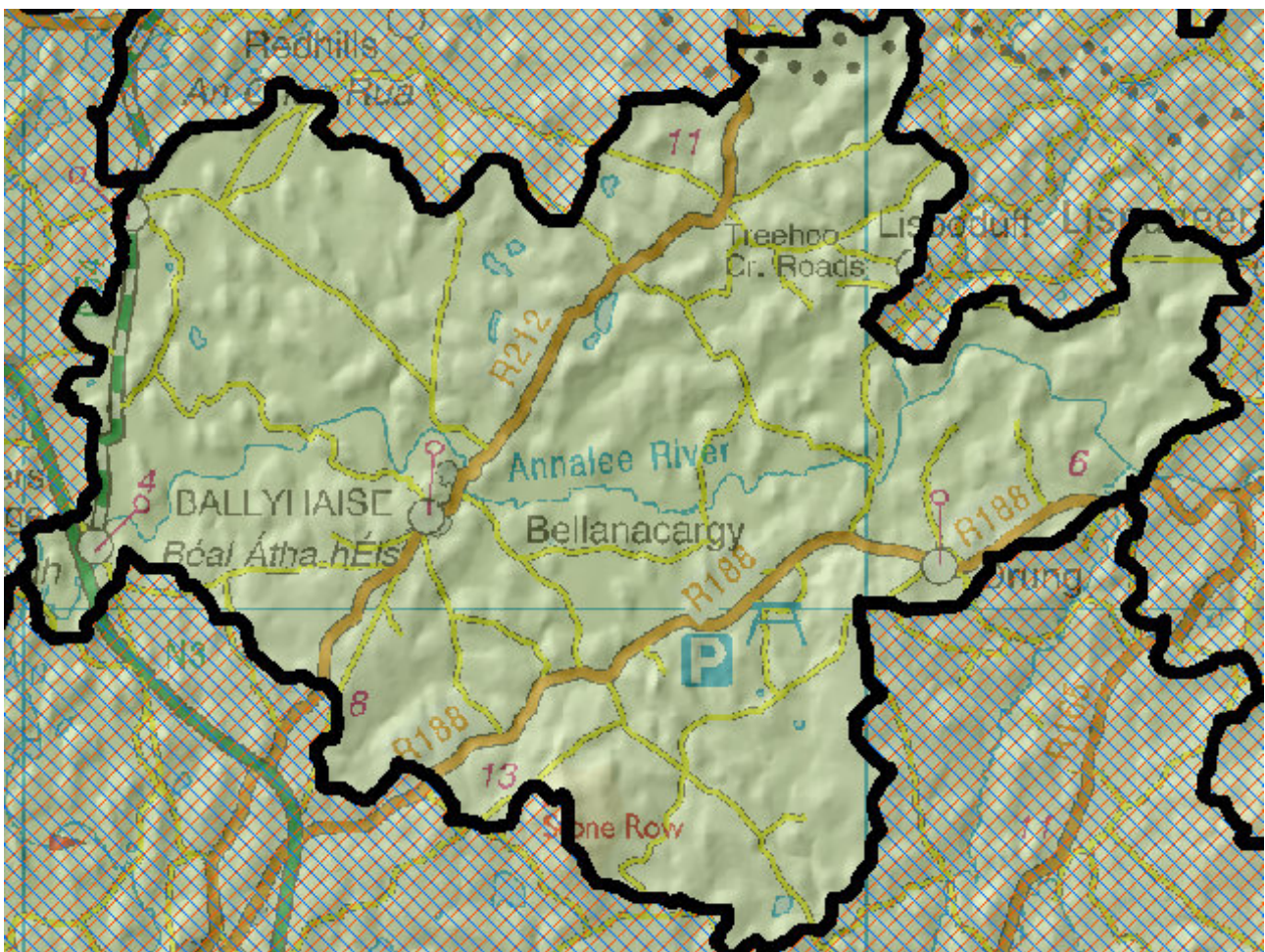


WFD Cycle 2

Catchment Erne

Subcatchment Annalee_SC_030

Code 36_5



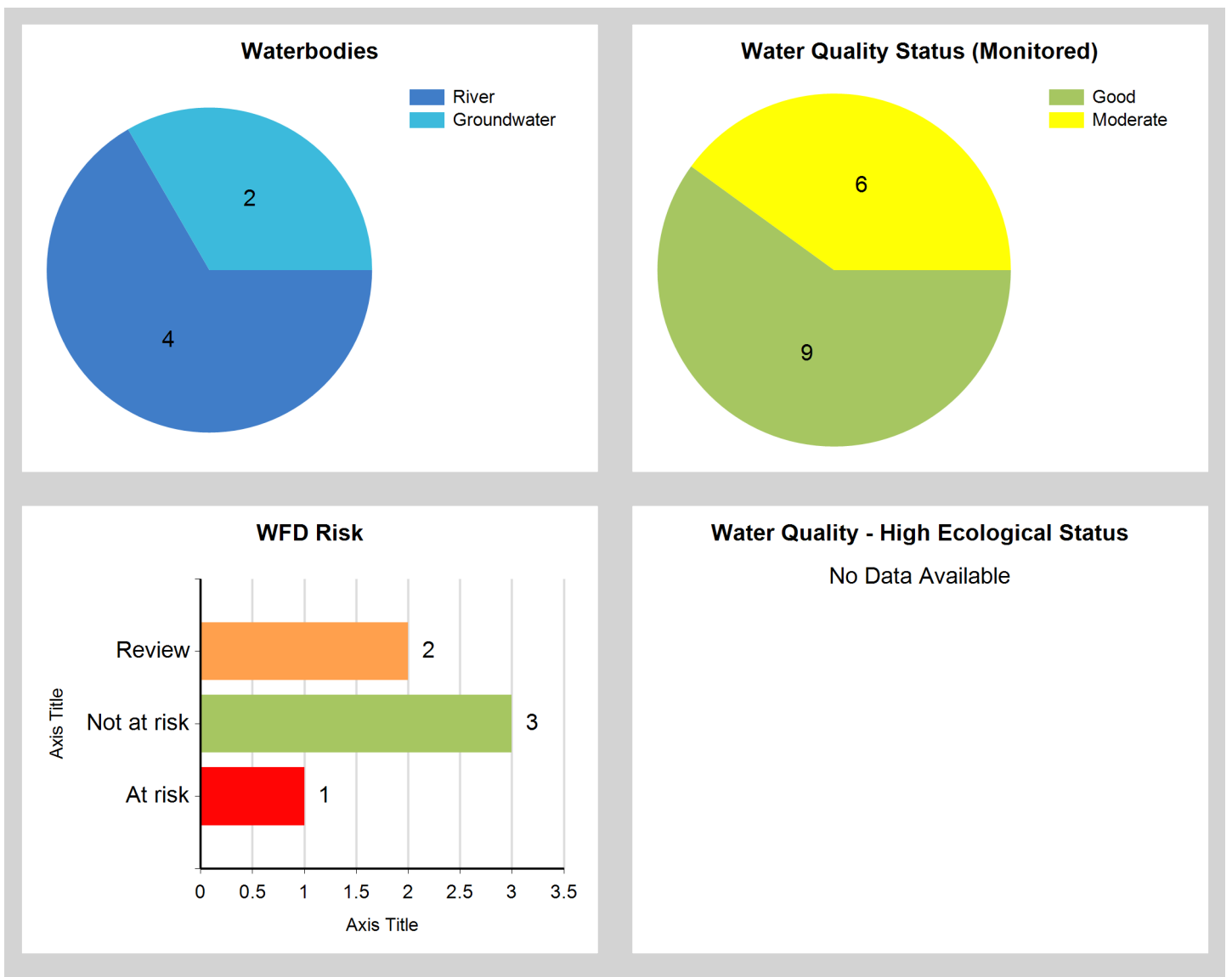
© Ordnance Survey Ireland. All rights reserved. Licence Number EN 0059208

Generated on: 07 Nov 2018

Assessment Purpose

This assessment has been produced as part of the national characterisation programme undertaken for the second cycle of Water Framework Directive river basin management planning. It has been led by the EPA, with input from Local Authorities and other public bodies, and with support from RPS consultants.

The characterisation assessments are automatically generated from the information stored in the WFD Application. They are based on information available to the end of 2015 but may be subject to change until the final 2018-21 river basin management plan is published. Users should ensure that they have the most up to date information by downloading the latest assessment before use.



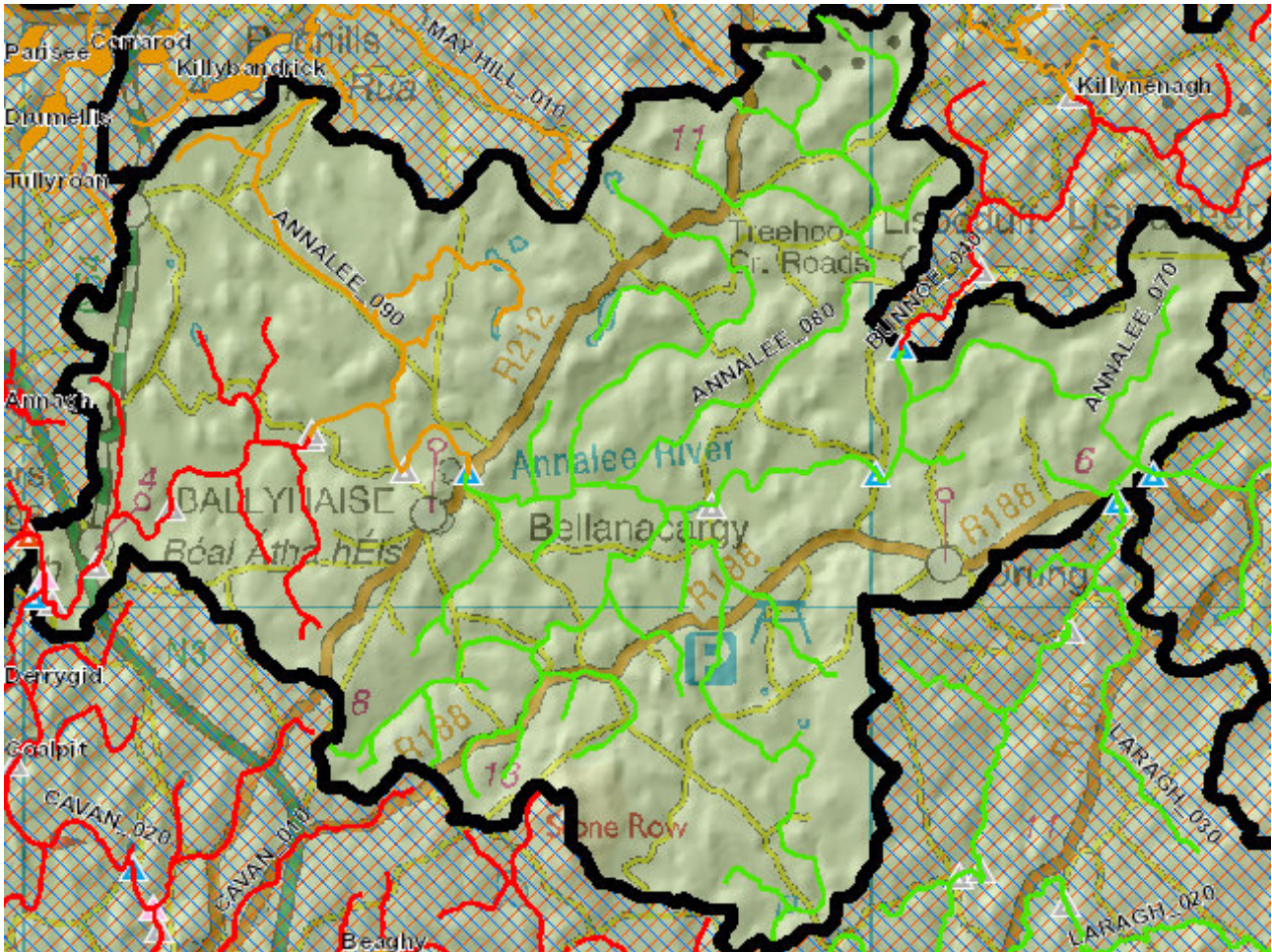
Evaluation of Priority Subcatchment Issues

There are four river water bodies in this subcatchment, comprising the lower reaches of the River Annalee. Two of the water bodies are Not at Risk: Annalee_070 and Annalee_080.

Moving downstream, ecological status for Annalee_090 for 2010-2015 is Good, however nutrient concentrations are elevated (orthophosphate) and so this water body is under Review. The significant pressures are likely to be nutrient input from agricultural activities and wastewater discharges. Note that the soils are wet and poorly drained in this subcatchment. Annalee_100 has remained at Moderate ecological status for 2010-2015, with elevated orthophosphate levels also as well as impacted oxygenation conditions; this water body is therefore At Risk. Nutrient losses and organic pollution from agricultural activities is the significant pressure, likely influenced by an upstream inputting water body from the River Cavan (Cavan_020) located in the adjacent subcatchment.

Investigative assessments are required to identify and confirm critical source areas for nutrients.

Map Subcatchment Risk Map

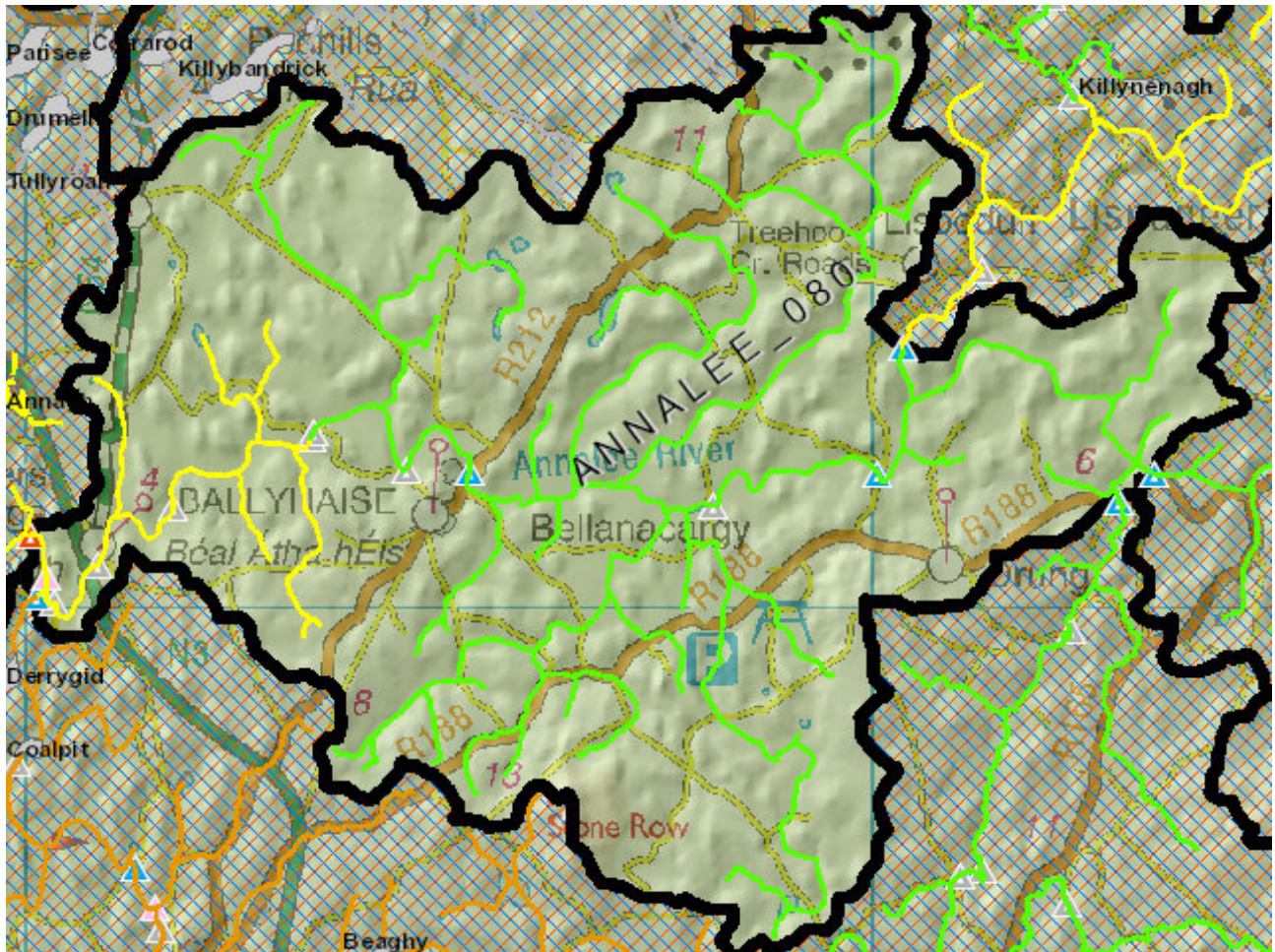


River And Lake Waterbodies: WFD Risk

The following river and lake waterbodies are in the subcatchment.

Code	Name	Type	WFD Risk	Significant Pressure
IE_NW_36A021400	ANNALEE_100	River	At risk	Yes
IE_NW_36A021150	ANNALEE_090	River	Review	No
IE_NW_36A021000	ANNALEE_080	River	Not at risk	Yes

Map Subcatchment Water Quality Status Map



River And Lake Waterbodies: Water Quality Status

The water quality status of river and lake waterbodies in the subcatchment is as follows.

Code	Name	Type	2007-09	2010-12	2010-15
IE_NW_36A020900	ANNALEE_070	River	Moderate	Good	Good
IE_NW_36A021000	ANNALEE_080	River	Moderate	Moderate	Good
IE_NW_36A021150	ANNALEE_090	River	Unassigned	Good	Good
IE_NW_36A021400	ANNALEE_100	River	Moderate	Moderate	Moderate

Potentially Dependent Transitional and Coastal Waterbodies

The Transitional and Coastal waterbodies listed below intersect spatially with river and lake waterbodies in the subcatchment ...

Code	Name	Type	Local Authority	WFD Risk
------	------	------	-----------------	----------

Potentially Dependent Groundwater Waterbodies

The groundwaters listed below intersect spatially with river and lake waterbodies in the subcatchment ...

Code	Name	Type	Local Authority	WFD Risk
IE_NW_G_061	Cavan	Groundwater	Cavan County Council	Review
IE_NW_G_062	Killashandra	Groundwater	Cavan County Council	Not at risk

Protected Areas intersecting River and Lake Waterbodies

The Protected Areas listed below intersect spatially with river and lake waterbodies in the subcatchment ...

Code	Name	Type	Waterbody Name	Association Type
------	------	------	----------------	------------------

Pressures

Below is a list of all significant pressures identified in the subcatchment.

Code	Name	WFD Risk	Pressure Category	Pressure Sub Category
IE_NW_36A021400	ANNALEE_100	At risk	Agriculture	Pasture
IE_NW_G_061	Cavan	Review	Anthropogenic Pressures	Unknown

Further Characterisation Actions

The following further characterisation actions have been identified. These are necessary to help understand more fully issues in the subcatchment and their likely cause.

Code	Name	Action	Responsible Organisation
IE_NW_36A021150	ANNALEE_090	IA5 Multiple Sources in defined rural area (1km) or waterbody or rural town	Cavan County Council
IE_NW_36A021400	ANNALEE_100	IA7 Multiple Sources in Multiple Areas	Cavan County Council