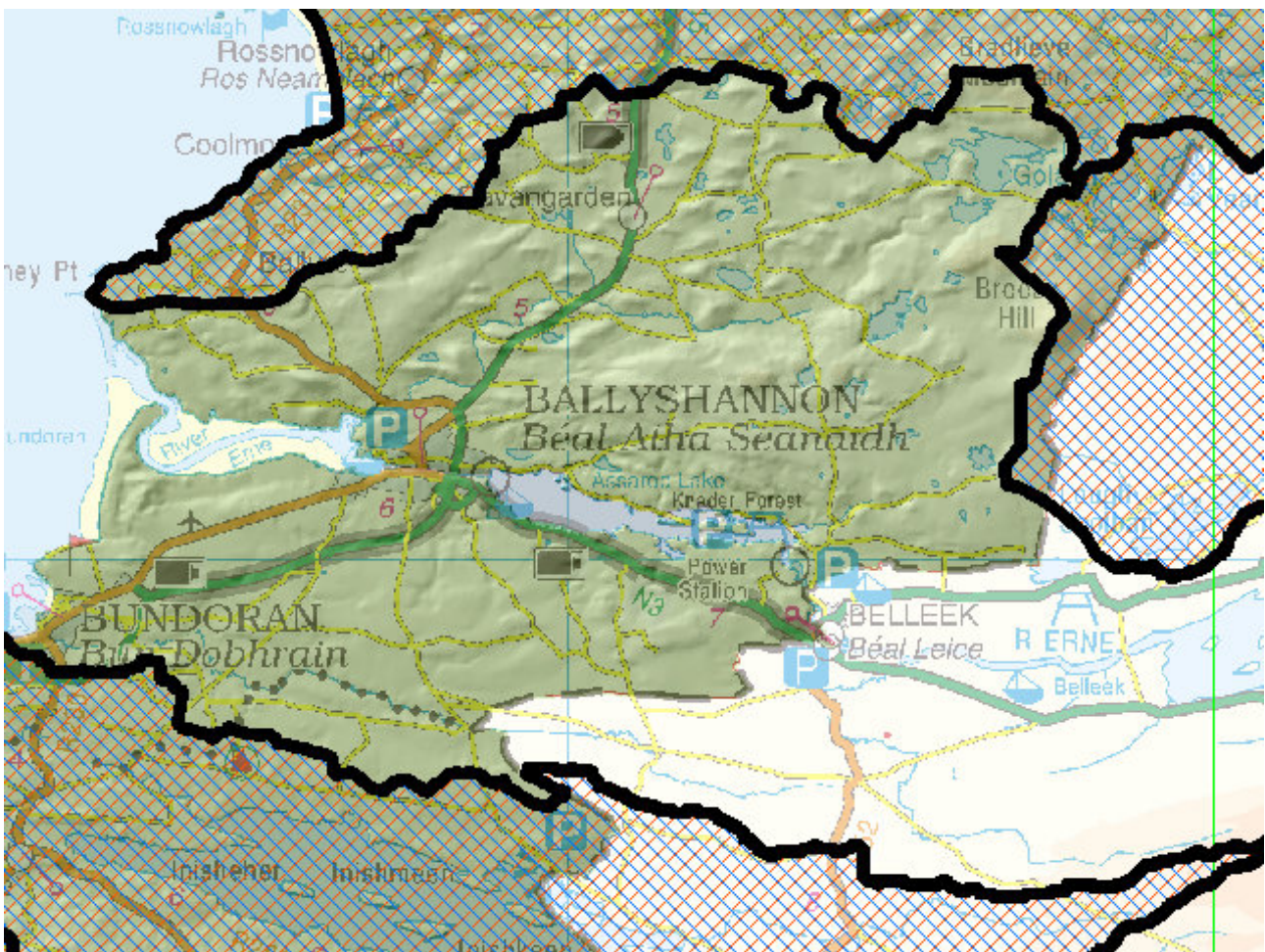


# WFD Cycle 2

Catchment Erne

Subcatchment Erne\_SC\_050

Code 36\_27



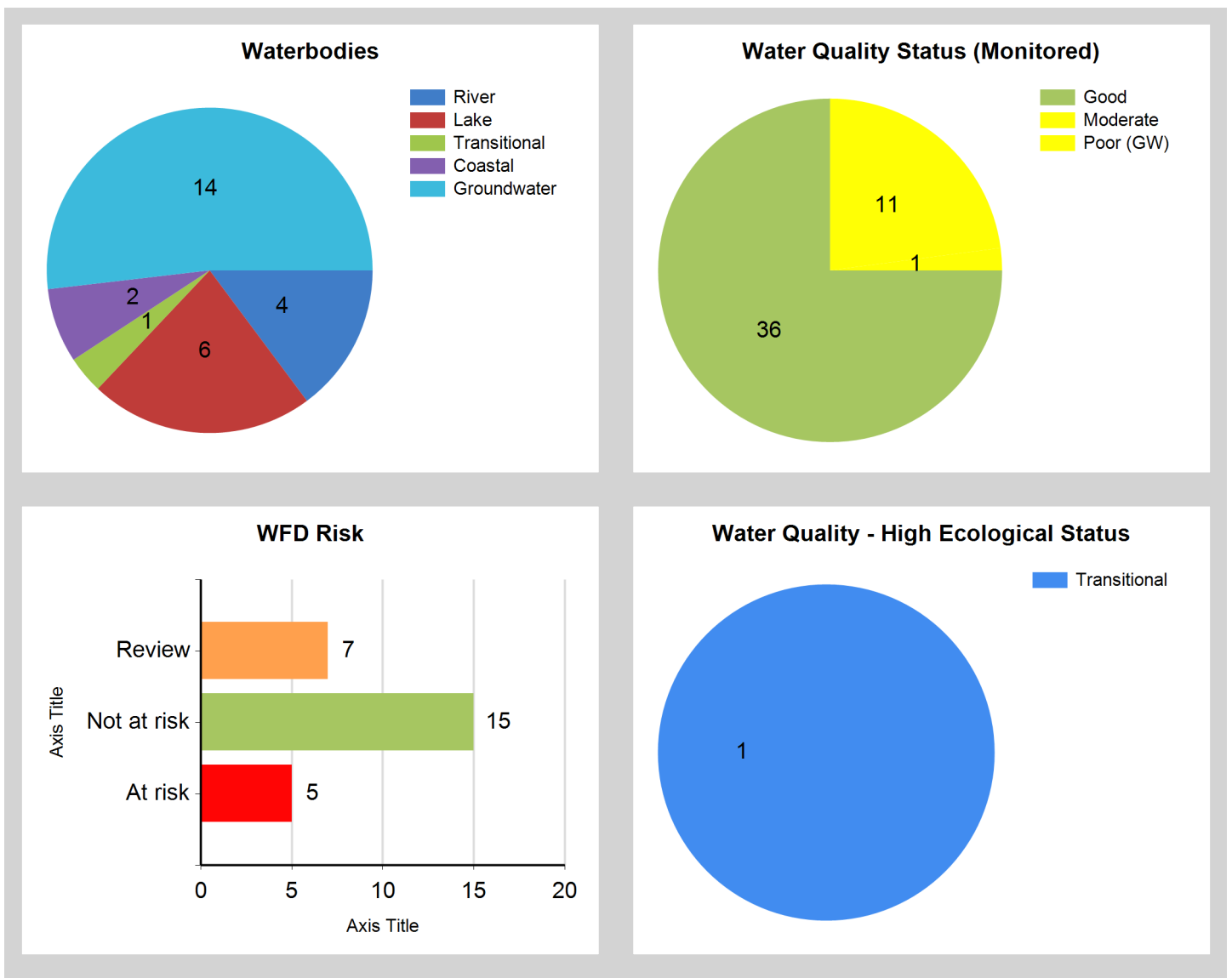
© Ordnance Survey Ireland. All rights reserved. Licence Number EN 0059208

Generated on: 16 Jan 2019

## Assessment Purpose

This assessment has been produced as part of the national characterisation programme undertaken for the second cycle of Water Framework Directive river basin management planning. It has been led by the EPA, with input from Local Authorities and other public bodies, and with support from RPS consultants.

The characterisation assessments are automatically generated from the information stored in the WFD Application. They are based on information available to the end of 2015 but may be subject to change until the final 2018-21 river basin management plan is published. Users should ensure that they have the most up to date information by downloading the latest assessment before use.



## Evaluation of Priority Subcatchment Issues

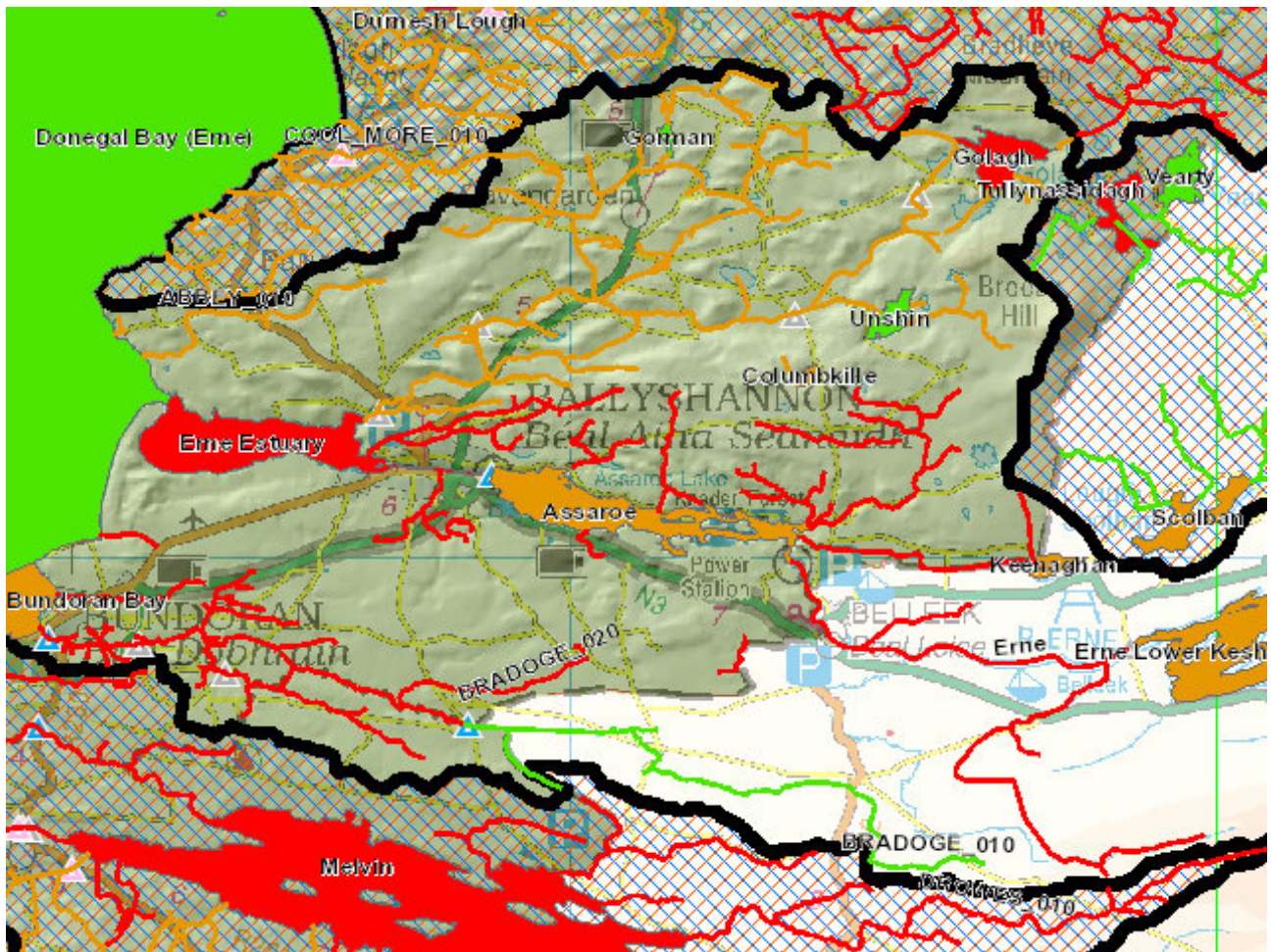
There are ten waterbodies in this subcatchment; six lake waterbodies and four river waterbodies and there are three waterbodies shared with Northern Ireland.

There are three river waterbodies; two are At Risk, one At Review and one Not At Risk. Bradoge\_020 and Erne\_120 are both At Risk due to Ecological status for 2013-2015 remained at Moderate showing no improvement in the last cycle. Bradoge\_010 maintained Good status for this period, hence Not At Risk; there is no biological or chemistry data for the Unassigned Abbey\_010 river that move to At Review. There are no chemistry data for either of the Bardoge river water bodies while the chemistry and biology monitoring locations for the Erne\_120 river water body are at different locations with the biology monitored at the Rosscor Viaduct in Fermanagh and the chemistry at Cathleen Falls in Donegal. The nutrient concentrations for the Erne\_120 water body are all low and less than the EQS or threshold value for Good status.

The six lake water bodies, three of which were Unassigned Assaroe Lake, Columbkille and Keenaghan Loughare now At Review pending more data and potential pressures. Two lakes Gorman and Unshin are Not At Risk, due to either maintained Good Ecological status or improved to Good Ecological status in 2013-2015 cycle. Golagh Lough has deteriorated in Ecological status from Good to Moderate with an exceedance in Chlorophyll and as such has been assigned At Risk.

The main pressures are Agriculture, Past activity, industry and sewage (septic tanks; misconnection and water treatment facilities). The main pathway here is overland flow for phosphate and this is a potential issue for the area of the south and north-west of the subcatchment while the regionally and locally important aquifers and associated karst features in the west introduce the possibility of a subsurface pathway for phosphate transfer.

## Map Subcatchment Risk Map

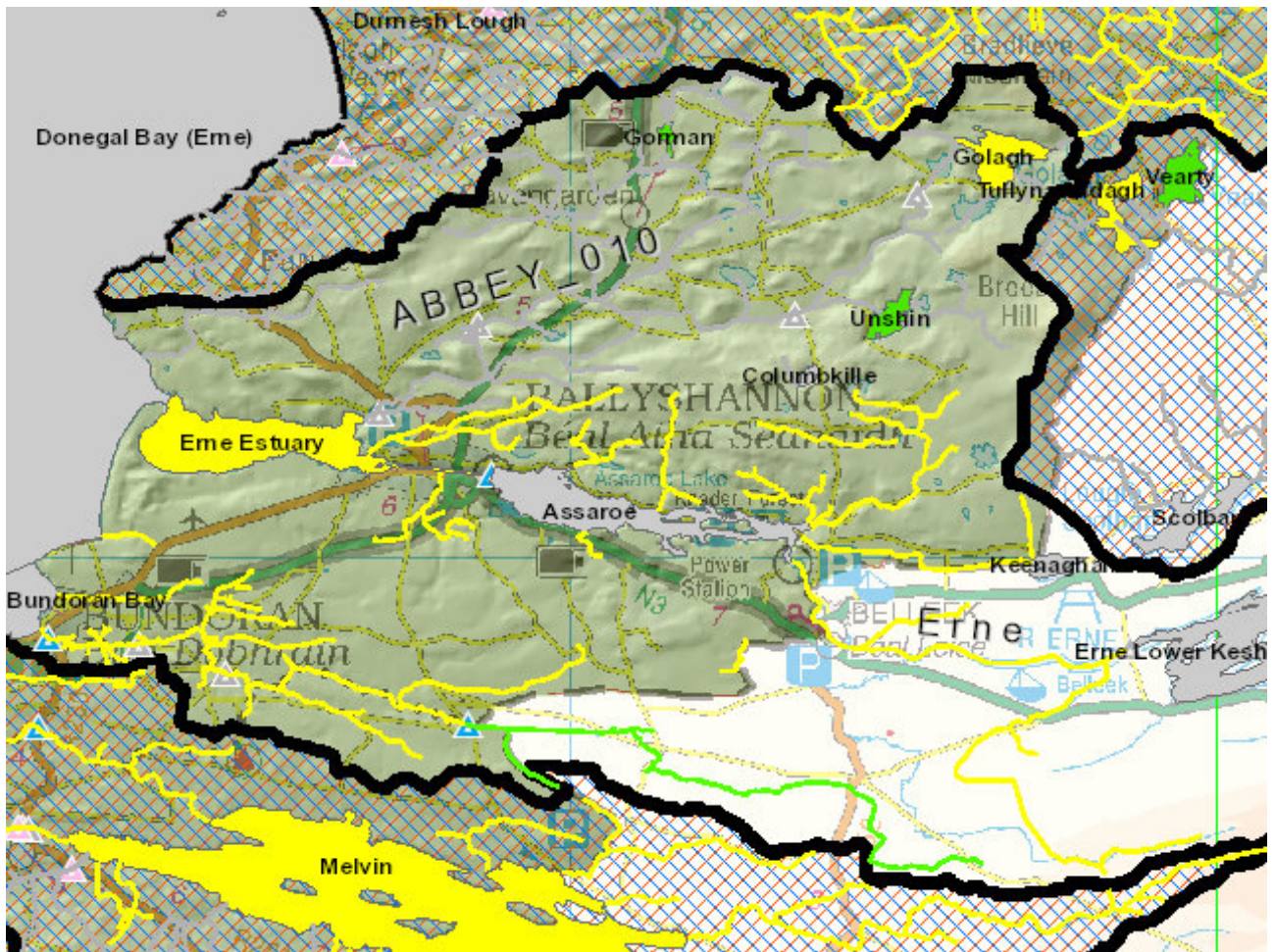


## River And Lake Waterbodies: WFD Risk

The following river and lake waterbodies are in the subcatchment.

Code	Name	Type	WFD Risk	Significant Pressure
IE_NW_35B070200	BRADOGE_020	River	At risk	Yes
IE_NW_36_715	Golagh	Lake	At risk	Yes
UKGBNI1NW363604085	Erne	River	At risk	Yes
IE_NW_36_710	Columbkille	Lake	Review	No
IE_NW_36_717	Assaroe	Lake	Review	Yes
IE_NW_36A010300	ABBEY_010	River	Review	Yes

## Map Subcatchment Water Quality Status Map



## River And Lake Waterbodies: Water Quality Status

The water quality status of river and lake waterbodies in the subcatchment is as follows.

Code	Name	Type	2007-09	2010-12	2010-15
IE_NW_36A010300	ABBEY_010	River	Unassigned	Unassigned	Unassigned
IE_NW_36_717	Assaroe	Lake	Unassigned	Unassigned	Unassigned
UKGBNI1NW35350 4077	BRADOGE_010	River	Good	Good	Good
IE_NW_35B070200	BRADOGE_020	River	Moderate	Moderate	Moderate
IE_NW_36_710	Columbkille	Lake	Unassigned	Unassigned	Unassigned
UKGBNI1NW36360 4085	Erne	River	Moderate	Moderate	Moderate
IE_NW_36_715	Golagh	Lake	Good	Good	Moderate
IE_NW_36_706	Gorman	Lake	Unassigned	Good	Good
UKGBNI3NW0029	Keenaghan	Lake	Unassigned	Unassigned	Unassigned
IE_NW_36_712	Unshin	Lake	Moderate	Moderate	Good

## Potentially Dependent Transitional and Coastal Waterbodies

The Transitional and Coastal waterbodies listed below intersect spatially with river and lake waterbodies in the subcatchment ...

Code	Name	Type	Local Authority	WFD Risk
IE_NW_010_0000	Donegal Bay (Erne)	Coastal	Donegal County Council	Not at risk
IE_NW_020_0000	Bundoran Bay	Coastal	Donegal County Council	Review
IE_NW_030_0100	Erne Estuary	Transitional	Donegal County Council	At risk

## Potentially Dependent Groundwater Waterbodies

The groundwaters listed below intersect spatially with river and lake waterbodies in the subcatchment ...

Code	Name	Type	Local Authority	WFD Risk
GBNI4NW008	Ederney	Groundwater	Donegal County Council	Not at risk
IE_NW_G_018	Kildoney North	Groundwater	Donegal County Council	Not at risk
IE_NW_G_047	Donegal South	Groundwater	Donegal County Council	Not at risk
IE_NW_G_071	Donegal-Ballintra	Groundwater	Donegal County Council	Not at risk
IE_NW_G_072	Ballyshannon	Groundwater	Donegal County Council	Not at risk
IE_NW_G_095	GWDTE-Dunmuckrum Turlough (SAC002303)	Groundwater	Donegal County Council	Review
IE_NW_G_100	Waste Facility (W0024-03)	Groundwater	Donegal County Council	At risk
IEGBNI_NW_G_01 1	Ballyshannon East	Groundwater	Donegal County Council	Not at risk
IEGBNI_NW_G_01 2	Ballyshannon South	Groundwater	Donegal County Council	Not at risk
IEGBNI_NW_G_01 3	Bundoran	Groundwater	Leitrim County Council	Not at risk
IEGBNI_NW_G_01 4	Tullaghan-Lough Melvin	Groundwater	Leitrim County Council	Not at risk
IEGBNI_NW_G_01 5	Castlecaldwell Forest	Groundwater	Donegal County Council	Not at risk
IEGBNI_NW_G_01 7	Kilcoo	Groundwater	Leitrim County Council	Not at risk
IEGBNI_NW_G_04 4	Rossinver	Groundwater	Leitrim County Council	Review

## Protected Areas intersecting River and Lake Waterbodies

The Protected Areas listed below intersect spatially with river and lake waterbodies in the subcatchment ...

Code	Name	Type	Waterbody Name	Association Type
IE0004151	Donegal Bay SPA	SPA	Erne	Overlapping / partly within Protected Area
IEPA1_NW_36_712	Unshin	Drinking Water	Unshin	Within Protected Area
IEPA1_NW_36_717	Assaroe	Drinking Water	Assaroe	Within Protected Area

## Pressures

Below is a list of all significant pressures identified in the subcatchment.

Code	Name	WFD Risk	Pressure Category	Pressure Sub Category
IE_NW_030_0100	Erne Estuary	At risk	Hydromorphology	Dams, barriers, locks, weirs
IE_NW_35B070200	BRADOGE_020	At risk	Domestic Waste Water	Waste Water discharge
IE_NW_35B070200	BRADOGE_020	At risk	Urban Run-off	Diffuse Sources Run-Off
IE_NW_35B070200	BRADOGE_020	At risk	Urban Waste Water	Combined Sewer Overflows
IE_NW_36_715	Golagh	At risk	Anthropogenic Pressures	Unknown
IE_NW_G_100	Waste Facility (W0024-03)	At risk	Waste	Waste
UKGBNI1NW363604085	Erne	At risk	Agriculture	Agriculture
UKGBNI1NW363604085	Erne	At risk	Invasive Species	Invasive species
UKGBNI1NW363604085	Erne	At risk	Hydromorphology	Dams, barriers, locks, weirs
IE_NW_020_0000	Bundoran Bay	Review	Anthropogenic Pressures	Unknown
IE_NW_36_717	Assaroe	Review	Hydromorphology	Dams, barriers, locks, weirs
IE_NW_36A010300	ABBEY_010	Review	Extractive Industry	Quarries
IE_NW_G_095	GWDTE-Dunmuckrum Turlough (SAC002303)	Review	Anthropogenic Pressures	Unknown
IEGBNI_NW_G_044	Rossinver	Review	Anthropogenic Pressures	Unknown

## Further Characterisation Actions

The following further characterisation actions have been identified. These are necessary to help understand more fully issues in the subcatchment and their likely cause.

Code	Name	Action	Responsible Organisation
IE_NW_36_715	Golagh	IA1 Provision of Information	Environmental Protection Agency
IE_NW_36_710	Columbkille	IA1 Provision of Information	Donegal County Council
IE_NW_35B070200	BRADOGE_020	IA3 Determination of Water Quality (unassigned waterbody)	Donegal County Council
IE_NW_35B070200	BRADOGE_020	IA6 Multiple Sources in Large Urban Area	Donegal County Council
UKGBNI3NW0029	Keenaghan	IA1 Provision of Information	Environmental Protection Agency
IE_NW_36_717	Assaroe	IA1 Provision of Information	Environmental Protection Agency
UKGBNI1NW363604085	Erne	IA1 Provision of Information	Environmental Protection Agency
IE_NW_36A010300	ABBEY_010	IA3 Determination of Water Quality (unassigned waterbody)	Donegal County Council