

WFD Cycle 2

Catchment Erne

Subcatchment Erne_SC_030

Code 36_21



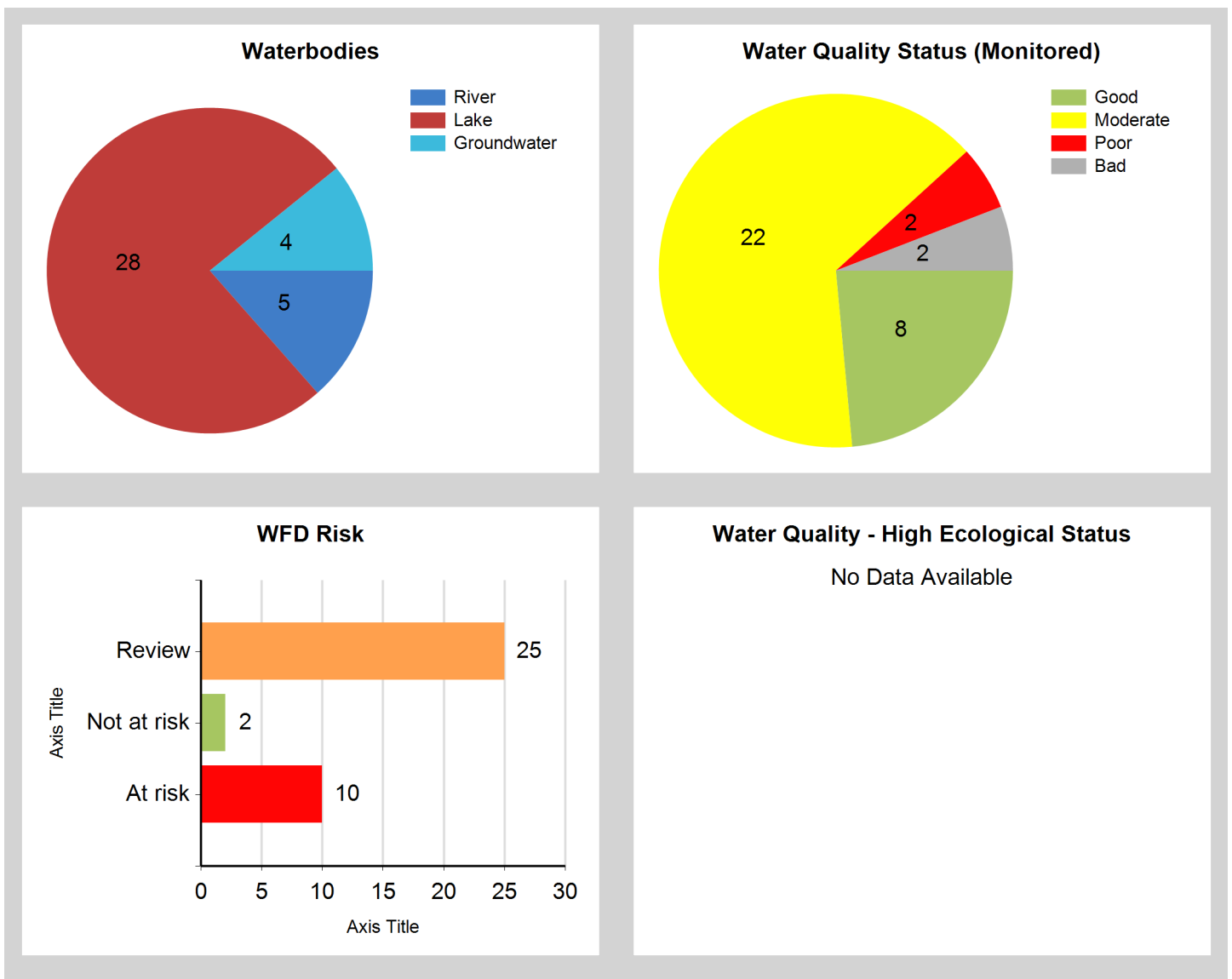
© Ordnance Survey Ireland. All rights reserved. Licence Number EN 0059208

Generated on: 16 Jan 2019

Assessment Purpose

This assessment has been produced as part of the national characterisation programme undertaken for the second cycle of Water Framework Directive river basin management planning. It has been led by the EPA, with input from Local Authorities and other public bodies, and with support from RPS consultants.

The characterisation assessments are automatically generated from the information stored in the WFD Application. They are based on information available to the end of 2015 but may be subject to change until the final 2018-21 river basin management plan is published. Users should ensure that they have the most up to date information by downloading the latest assessment before use.



Evaluation of Priority Subcatchment Issues

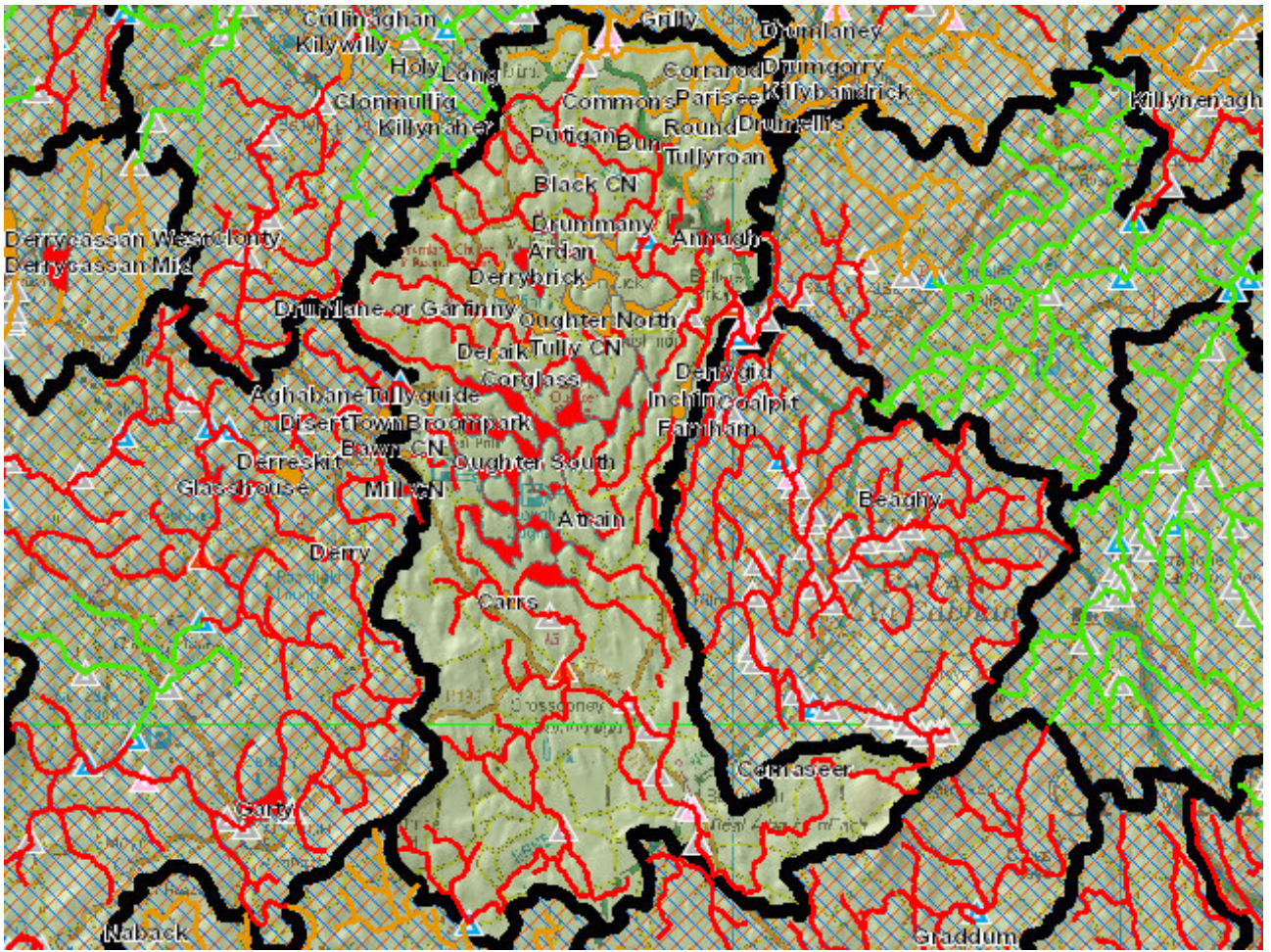
There are thirty three water bodies in this subbasin; twenty eight lakes and five rivers. The Ecological status is less than Good and phosphate concentrations are elevated on the main channel of the river Erne, Erne_070 to Erne_090 and its associated tributary, Ballinagh_010.

Agriculture is the significant pressure, in particular point sources from farmyards and diffuse sources from landspreading, on all four rivers. The waste water facility is also a significant pressure on Erne_070. Local catchment assessment will be carried out on all four rivers.

Four of the five lakes in the Erne_080 subbasin have less than Good ecological status and agriculture is the significant pressure. The local catchment assessment on all four lakes will be carried out with the assessment on Erne_080. Due to the water quality in Erne_080 and the monitored lakes in this subbasin, the twelve unassigned lakes in the Erne_080 subbasin are likely to be At Risk but will be at Review until further assessment is undertaken. Local catchment assessments to determine water quality will be carried out on these lakes. The unassigned lakes in the Erne_090 subbasin have been revised to Review and local catchment assessments to determine water quality will be undertaken.

There are no biological or water quality data for Erne_100, given the water quality in the inputting river and the presence of agriculture as a potential significant pressure a local catchment assessment to determine water quality will be undertaken. The six unassigned lakes have been revised to Review. A local catchment assessment to determine water quality will be carried out on one lake (Parisee Lough). The findings of this will determine what further characterisation actions, if any, will be required on the remaining five lakes.

Map Subcatchment Risk Map

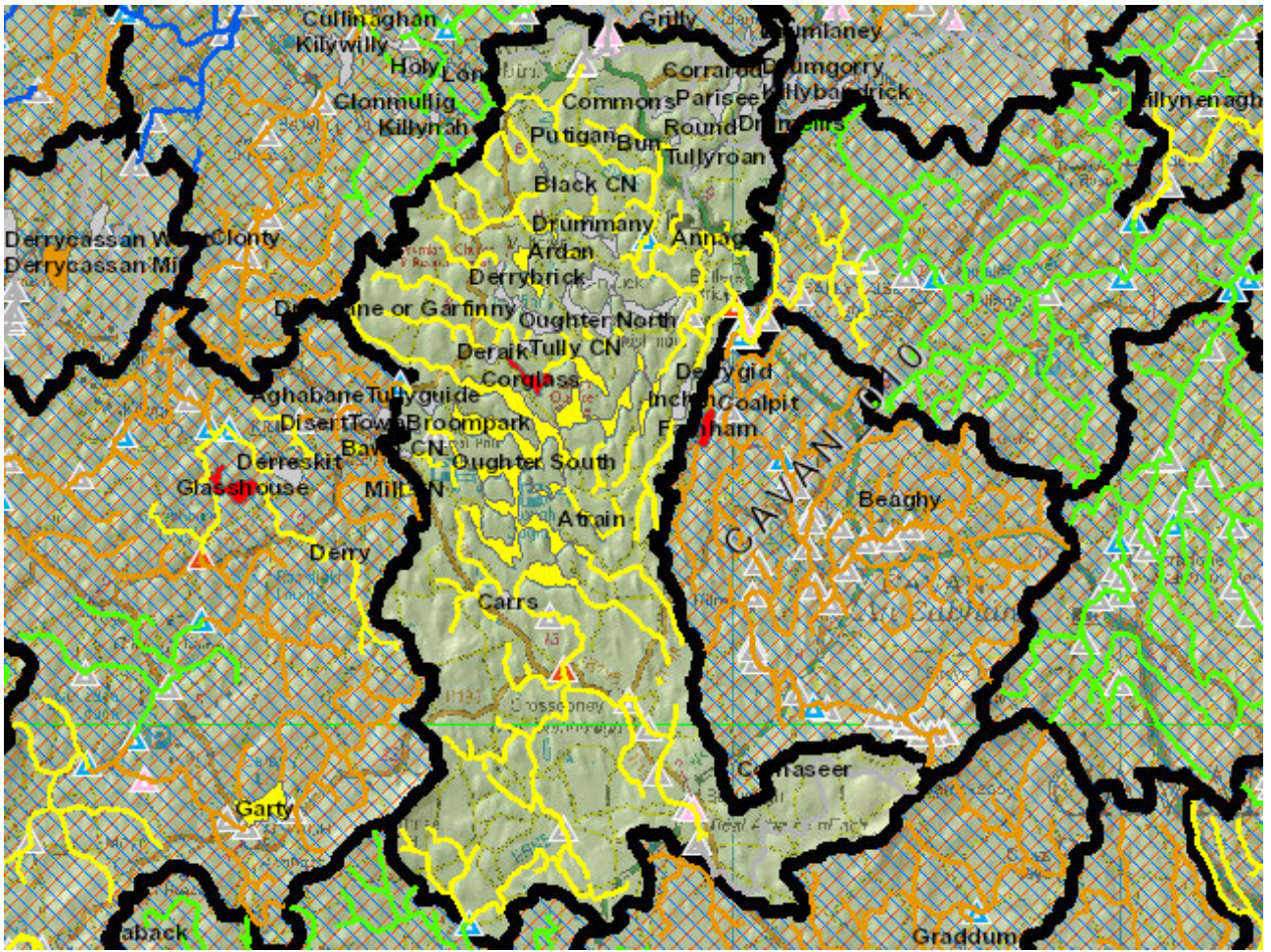


River And Lake Waterbodies: WFD Risk

The following river and lake waterbodies are in the subcatchment.

| Code | Name | Type | WFD Risk | Significant Pressure |
|-----------------|----------------------|-------|----------|----------------------|
| IE_NW_36_400 | Derrybrick | Lake | At risk | Yes |
| IE_NW_36_432 | Ardan | Lake | At risk | Yes |
| IE_NW_36_517 | Annagh | Lake | At risk | Yes |
| IE_NW_36_618 | Atrain | Lake | At risk | Yes |
| IE_NW_36_655 | Corglass | Lake | At risk | Yes |
| IE_NW_36_657 | Oughter South | Lake | At risk | Yes |
| IE_NW_36B010100 | BALLINAGH_010 | River | At risk | Yes |
| IE_NW_36E011100 | ERNE_070 | River | At risk | Yes |
| IE_NW_36E011300 | ERNE_080 | River | At risk | Yes |
| IE_NW_36E011410 | ERNE_090 | River | At risk | Yes |
| IE_NW_36_261 | Bun | Lake | Review | Yes |
| IE_NW_36_277 | Round | Lake | Review | Yes |
| IE_NW_36_318 | Corrarod | Lake | Review | Yes |
| IE_NW_36_324 | Cornaseer | Lake | Review | Yes |
| IE_NW_36_367 | Commons | Lake | Review | Yes |
| IE_NW_36_386 | Derrygeeraghan | Lake | Review | Yes |
| IE_NW_36_458 | Tonawolly | Lake | Review | Yes |
| IE_NW_36_465 | Parisee | Lake | Review | Yes |
| IE_NW_36_476 | Tullyroan | Lake | Review | Yes |
| IE_NW_36_477 | Black CN | Lake | Review | Yes |
| IE_NW_36_490 | Drumellis | Lake | Review | Yes |
| IE_NW_36_504 | Drumlane or Garfinny | Lake | Review | Yes |
| IE_NW_36_505 | Putigan | Lake | Review | Yes |
| IE_NW_36_521 | Drummany | Lake | Review | Yes |
| IE_NW_36_561 | Tully CN | Lake | Review | Yes |
| IE_NW_36_565 | Pleasure | Lake | Review | Yes |
| IE_NW_36_581 | Broompark | Lake | Review | Yes |
| IE_NW_36_603 | Deraik | Lake | Review | Yes |
| IE_NW_36_628 | Carrs | Lake | Review | Yes |
| IE_NW_36_640 | Tullyguide | Lake | Review | Yes |
| IE_NW_36_652 | Inchin | Lake | Review | Yes |
| IE_NW_36_661 | Oughter North | Lake | Review | Yes |
| IE_NW_36E011440 | ERNE_100 | River | Review | Yes |

Map Subcatchment Water Quality Status Map



River And Lake Waterbodies: Water Quality Status

The water quality status of river and lake waterbodies in the subcatchment is as follows.

| Code | Name | Type | 2007-09 | 2010-12 | 2010-15 |
|-----------------|----------------------|-------|------------|------------|------------|
| IE_NW_36_517 | Annagh | Lake | Moderate | Moderate | Moderate |
| IE_NW_36_432 | Ardan | Lake | Moderate | Moderate | Moderate |
| IE_NW_36_618 | Atrain | Lake | Unassigned | Moderate | Moderate |
| IE_NW_36B010100 | BALLINAGH_010 | River | Unassigned | Unassigned | Unassigned |
| IE_NW_36_477 | Black CN | Lake | Unassigned | Unassigned | Unassigned |
| IE_NW_36_581 | Broompark | Lake | Unassigned | Unassigned | Unassigned |
| IE_NW_36_261 | Bun | Lake | Unassigned | Unassigned | Unassigned |
| IE_NW_36_628 | Carrs | Lake | Unassigned | Unassigned | Unassigned |
| IE_NW_36_367 | Commons | Lake | Unassigned | Unassigned | Unassigned |
| IE_NW_36_655 | Corglass | Lake | Moderate | Bad | Bad |
| IE_NW_36_324 | Cornaseer | Lake | Unassigned | Unassigned | Unassigned |
| IE_NW_36_318 | Corrarod | Lake | Unassigned | Unassigned | Unassigned |
| IE_NW_36_603 | Deraik | Lake | Unassigned | Unassigned | Unassigned |
| IE_NW_36_400 | Derrybrick | Lake | Moderate | Poor | Moderate |
| IE_NW_36_386 | Derrygeeraghan | Lake | Unassigned | Unassigned | Unassigned |
| IE_NW_36_490 | Drumellis | Lake | Unassigned | Unassigned | Unassigned |
| IE_NW_36_504 | Drumlane or Garfinny | Lake | Unassigned | Unassigned | Unassigned |
| IE_NW_36_521 | Drummany | Lake | Unassigned | Unassigned | Unassigned |
| IE_NW_36E011100 | ERNE_070 | River | Moderate | Moderate | Moderate |
| IE_NW_36E011300 | ERNE_080 | River | Moderate | Moderate | Moderate |
| IE_NW_36E011410 | ERNE_090 | River | Moderate | Moderate | Moderate |
| IE_NW_36E011440 | ERNE_100 | River | Unassigned | Unassigned | Unassigned |
| IE_NW_36_652 | Inchin | Lake | Unassigned | Unassigned | Unassigned |
| IE_NW_36_661 | Oughter North | Lake | Unassigned | Unassigned | Unassigned |
| IE_NW_36_657 | Oughter South | Lake | Moderate | Poor | Moderate |
| IE_NW_36_465 | Parisee | Lake | Unassigned | Unassigned | Unassigned |
| IE_NW_36_565 | Pleasure | Lake | Unassigned | Unassigned | Unassigned |
| IE_NW_36_505 | Putigan | Lake | Unassigned | Unassigned | Unassigned |
| IE_NW_36_277 | Round | Lake | Unassigned | Unassigned | Unassigned |
| IE_NW_36_458 | Tonawolly | Lake | Unassigned | Unassigned | Unassigned |
| IE_NW_36_561 | Tully CN | Lake | Unassigned | Unassigned | Unassigned |
| IE_NW_36_640 | Tullyguide | Lake | Unassigned | Unassigned | Unassigned |
| IE_NW_36_476 | Tullyroan | Lake | Unassigned | Unassigned | Unassigned |

Potentially Dependent Transitional and Coastal Waterbodies

The Transitional and Coastal waterbodies listed below intersect spatially with river and lake waterbodies in the subcatchment ...

| Code | Name | Type | Local Authority | WFD Risk |
|------|------|------|-----------------|----------|
|------|------|------|-----------------|----------|

Potentially Dependent Groundwater Waterbodies

The groundwaters listed below intersect spatially with river and lake waterbodies in the subcatchment ...

| Code | Name | Type | Local Authority | WFD Risk |
|---------------------|----------------------|-------------|-------------------------|-------------|
| IE_NW_G_061 | Cavan | Groundwater | Cavan County Council | Review |
| IE_NW_G_062 | Killashandra | Groundwater | Cavan County Council | Not at risk |
| IEGBNI_NW_G_03 1 | Newtown-Ballyconnell | Groundwater | Cavan County Council | Not at risk |
| IEGBNI_NW_G_06 3 | Clones | Groundwater | Monaghan County Council | Review |

Protected Areas intersecting River and Lake Waterbodies

The Protected Areas listed below intersect spatially with river and lake waterbodies in the subcatchment ...

| Code | Name | Type | Waterbody Name | Association Type |
|---------------------------|-----------------------------|-------------------------|----------------|--|
| IEGBNILK_NW_19 94_0010 | Lough Oughter, County Cavan | Nutrient Sensitive Area | ERNE_080 | Overlapping / partly within Protected Area |
| IEGBNILK_NW_19 94_0010 | Lough Oughter, County Cavan | Nutrient Sensitive Area | Oughter South | Overlapping / partly within Protected Area |
| IEPA1_NW_36_400 | Derrybrick | Drinking Water | Derrybrick | Within Protected Area |
| IEPA1_NW_36_517 | Annagh | Drinking Water | Annagh | Within Protected Area |
| IEPA1_NW_36_618 | Atrain | Drinking Water | Atrain | Within Protected Area |
| IEPA1_NW_36E011 410 | ERNE_090 | Drinking Water | ERNE_090 | Within Protected Area |

Pressures

Below is a list of all significant pressures identified in the subcatchment.

| Code | Name | WFD Risk | Pressure Category | Pressure Sub Category |
|--------------|---------------|----------|-------------------|-----------------------|
| IE_NW_36_400 | Derrybrick | At risk | Agriculture | Agriculture |
| IE_NW_36_432 | Ardan | At risk | Agriculture | Pasture |
| IE_NW_36_517 | Annagh | At risk | Agriculture | Pasture |
| IE_NW_36_618 | Atrain | At risk | Agriculture | Pasture |
| IE_NW_36_655 | Corglass | At risk | Agriculture | Pasture |
| IE_NW_36_657 | Oughter South | At risk | Agriculture | Pasture |

| | | | | |
|-----------------|----------------------|---------|-------------------------|------------------------------------|
| IE_NW_36B010100 | BALLINAGH_010 | At risk | Agriculture | Agriculture |
| IE_NW_36E011100 | ERNE_070 | At risk | Agriculture | Agriculture |
| IE_NW_36E011100 | ERNE_070 | At risk | Urban Waste Water | Agglomeration PE of 1,001 to 2,000 |
| IE_NW_36E011300 | ERNE_080 | At risk | Agriculture | Agriculture |
| IE_NW_36E011410 | ERNE_090 | At risk | Agriculture | Pasture |
| IE_NW_36_261 | Bun | Review | Agriculture | Pasture |
| IE_NW_36_277 | Round | Review | Agriculture | Pasture |
| IE_NW_36_318 | Corrard | Review | Agriculture | Pasture |
| IE_NW_36_324 | Cornaseer | Review | Agriculture | Agriculture |
| IE_NW_36_367 | Commons | Review | Agriculture | Pasture |
| IE_NW_36_386 | Derrygeeraghan | Review | Agriculture | Pasture |
| IE_NW_36_458 | Tonawolly | Review | Agriculture | Pasture |
| IE_NW_36_465 | Parisee | Review | Agriculture | Pasture |
| IE_NW_36_476 | Tullyroan | Review | Agriculture | Pasture |
| IE_NW_36_477 | Black CN | Review | Agriculture | Pasture |
| IE_NW_36_490 | Drumellis | Review | Agriculture | Pasture |
| IE_NW_36_504 | Drumlane or Garfinny | Review | Agriculture | Pasture |
| IE_NW_36_505 | Putigan | Review | Agriculture | Pasture |
| IE_NW_36_521 | Drummany | Review | Agriculture | Pasture |
| IE_NW_36_561 | Tully CN | Review | Agriculture | Pasture |
| IE_NW_36_565 | Pleasure | Review | Agriculture | Pasture |
| IE_NW_36_581 | Broompark | Review | Agriculture | Pasture |
| IE_NW_36_603 | Deraik | Review | Agriculture | Pasture |
| IE_NW_36_628 | Carrs | Review | Agriculture | Pasture |
| IE_NW_36_640 | Tullyguide | Review | Agriculture | Pasture |
| IE_NW_36_652 | Inchin | Review | Agriculture | Pasture |
| IE_NW_36_661 | Oughter North | Review | Agriculture | Pasture |
| IE_NW_36E011440 | ERNE_100 | Review | Agriculture | Pasture |
| IE_NW_G_061 | Cavan | Review | Anthropogenic Pressures | Unknown |
| IEGBNI_NW_G_063 | Clones | Review | Anthropogenic Pressures | Unknown |

Further Characterisation Actions

The following further characterisation actions have been identified. These are necessary to help understand more fully issues in the subcatchment and their likely cause.

| Code | Name | Action | Responsible Organisation |
|--------------|-----------|---|--------------------------|
| IE_NW_36_458 | Tonawolly | IA3 Determination of Water Quality (unassigned waterbody) | Cavan County Council |

| | | | |
|-----------------|----------------------|---|--------------------------|
| IE_NW_36_318 | Corrarod | IA1 Provision of Information | Cavan County Council |
| IE_NW_36_505 | Putigan | IA3 Determination of Water Quality (unassigned waterbody) | Cavan County Council |
| IE_NW_36_652 | Inchin | IA9 Lake pressures | Cavan County Council |
| IE_NW_36_521 | Drummany | IA9 Lake pressures | Cavan County Council |
| IE_NW_36E011410 | ERNE_090 | IA7 Multiple Sources in Multiple Areas | Cavan County Council |
| IE_NW_36B010100 | BALLINAGH_010 | IA7 Multiple Sources in Multiple Areas | Cavan County Council |
| IE_NW_36_386 | Derrygeeraghan | IA9 Lake pressures | Cavan County Council |
| IE_NW_36_661 | Oughter North | IA9 Lake pressures | Cavan County Council |
| IE_NW_36E011100 | ERNE_070 | IA1 Provision of Information | Inland Fisheries Ireland |
| IE_NW_36_640 | Tullyguide | IA9 Lake pressures | Cavan County Council |
| IE_NW_36_367 | Commons | IA1 Provision of Information | Cavan County Council |
| IE_NW_36_618 | Atrain | IA9 Lake pressures | Cavan County Council |
| IE_NW_36_261 | Bun | IA3 Determination of Water Quality (unassigned waterbody) | Cavan County Council |
| IE_NW_36_517 | Annagh | IA9 Lake pressures | Cavan County Council |
| IE_NW_36E011410 | ERNE_090 | IA1 Provision of Information | Inland Fisheries Ireland |
| IE_NW_36E011100 | ERNE_070 | IA7 Multiple Sources in Multiple Areas | Cavan County Council |
| IE_NW_36_655 | Corglass | IA9 Lake pressures | Cavan County Council |
| IE_NW_36_603 | Deraik | IA9 Lake pressures | Cavan County Council |
| IE_NW_36_277 | Round | IA1 Provision of Information | Cavan County Council |
| IE_NW_36E011300 | ERNE_080 | IA7 Multiple Sources in Multiple Areas | Cavan County Council |
| IE_NW_36_640 | Tullyguide | IA9 Lake pressures | Cavan County Council |
| IE_NW_36_400 | Derrybrick | IA1 Provision of Information | Inland Fisheries Ireland |
| IE_NW_36_581 | Broompark | IA9 Lake pressures | Cavan County Council |
| IE_NW_36_477 | Black CN | IA9 Lake pressures | Cavan County Council |
| IE_NW_36_561 | Tully CN | IA9 Lake pressures | Cavan County Council |
| IE_NW_36_476 | Tullyroan | IA1 Provision of Information | Cavan County Council |
| IE_NW_36_657 | Oughter South | IA9 Lake pressures | Cavan County Council |
| IE_NW_36E011100 | ERNE_070 | IA1 Provision of Information | Irish Water |
| IE_NW_36_655 | Corglass | IA1 Provision of Information | Inland Fisheries Ireland |
| IE_NW_36_432 | Ardan | IA9 Lake pressures | Cavan County Council |
| IE_NW_36_490 | Drumellis | IA1 Provision of Information | Cavan County Council |
| IE_NW_36_324 | Cornaseer | IA9 Lake pressures | Cavan County Council |
| IE_NW_36_565 | Pleasure | IA9 Lake pressures | Cavan County Council |
| IE_NW_36E011440 | ERNE_100 | IA7 Multiple Sources in Multiple Areas | Cavan County Council |
| IE_NW_36_504 | Drumlane or Garfinny | IA9 Lake pressures | Cavan County Council |
| IE_NW_36_628 | Carrs | IA9 Lake pressures | Cavan County Council |
| IE_NW_36_465 | Parisee | IA3 Determination of Water Quality (unassigned waterbody) | Cavan County Council |