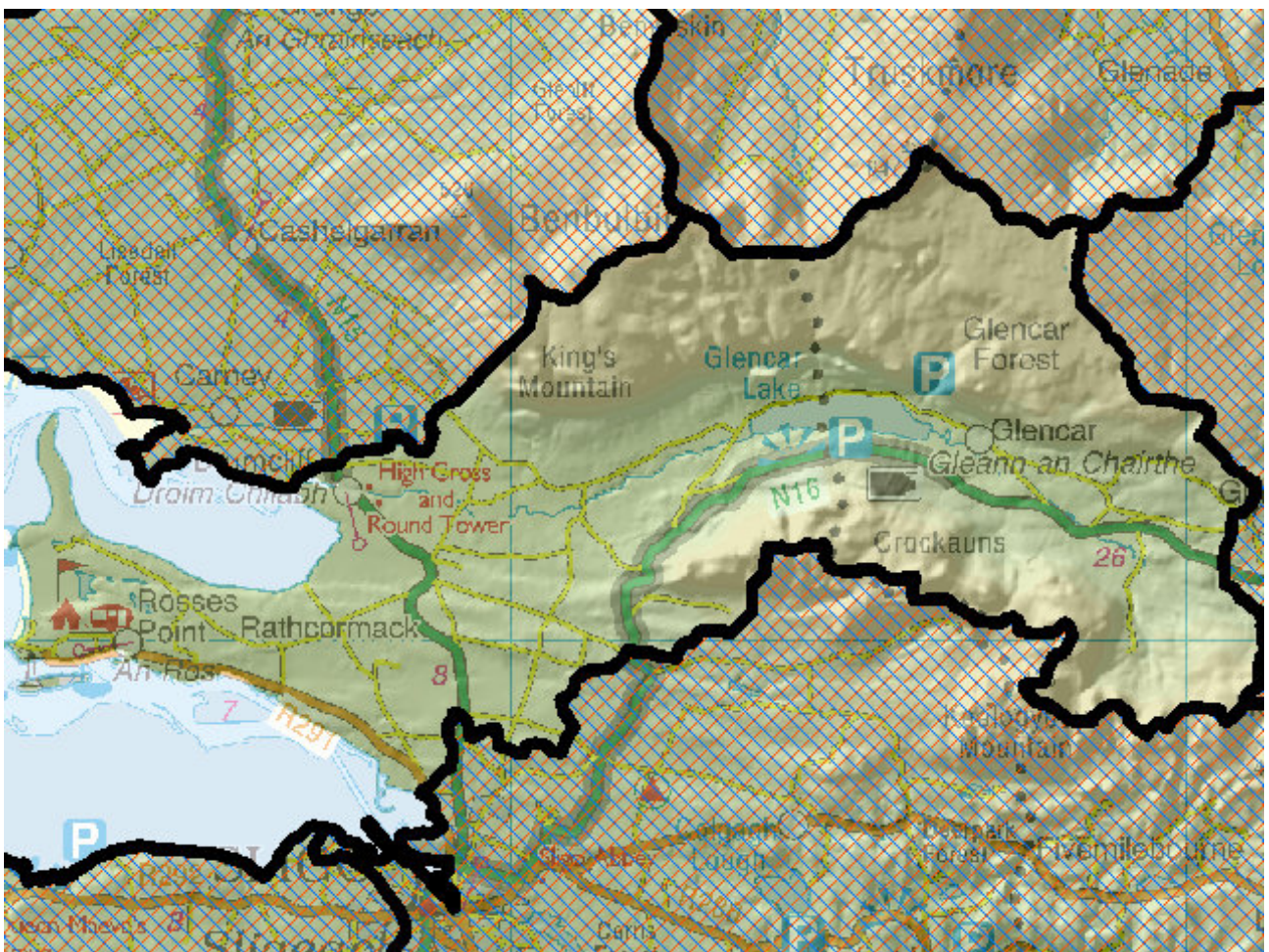


WFD Cycle 2

Catchment Sligo Bay & Drowse

Subcatchment Drumcliff_SC_010

Code 35_13



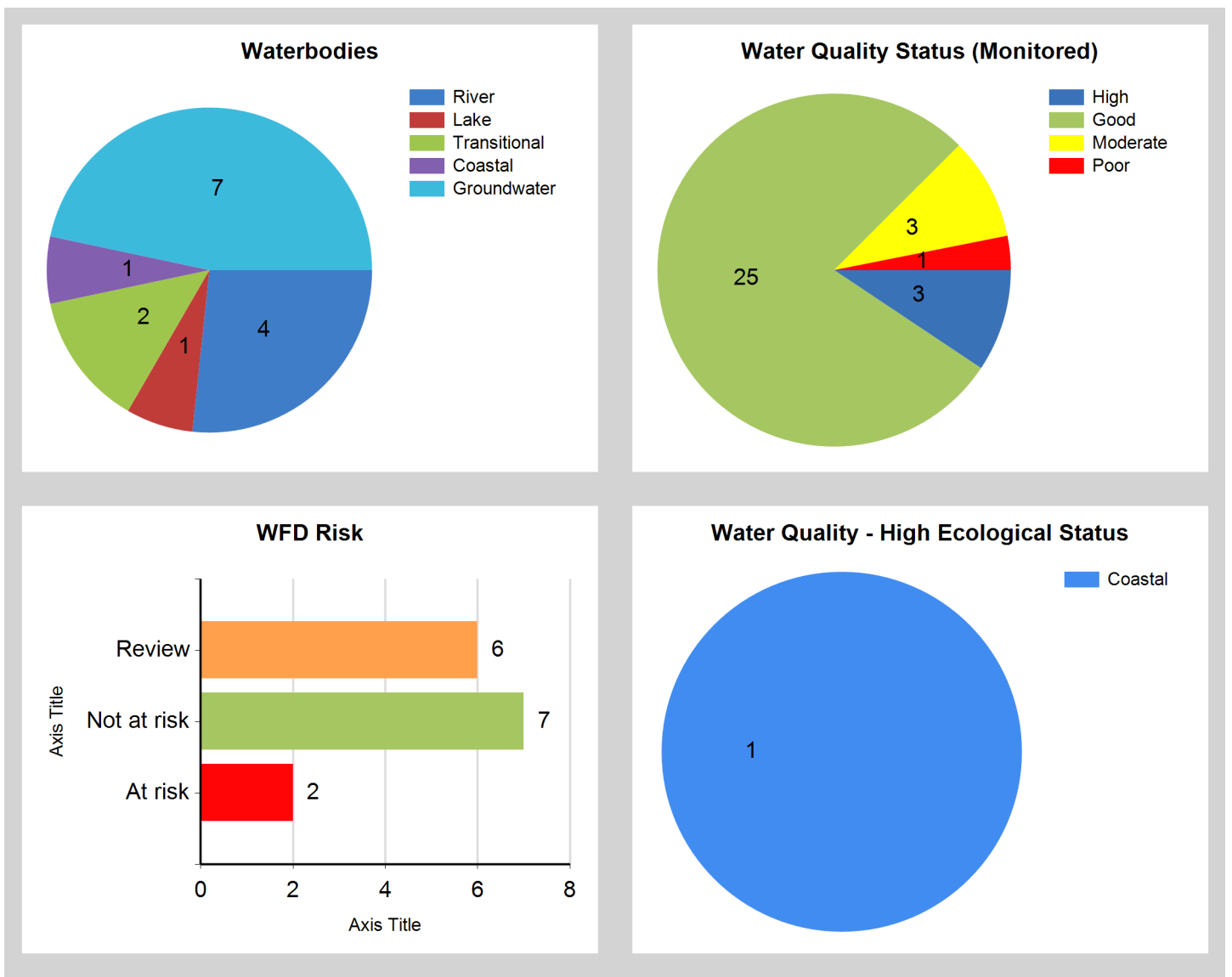
© Ordnance Survey Ireland. All rights reserved. Licence Number EN 0059208

Generated on: 15 Jan 2019

Assessment Purpose

This assessment has been produced as part of the national characterisation programme undertaken for the second cycle of Water Framework Directive river basin management planning. It has been led by the EPA, with input from Local Authorities and other public bodies, and with support from RPS consultants.

The characterisation assessments are automatically generated from the information stored in the WFD Application. They are based on information available to the end of 2015 but may be subject to change until the final 2018-21 river basin management plan is published. Users should ensure that they have the most up to date information by downloading the latest assessment before use.

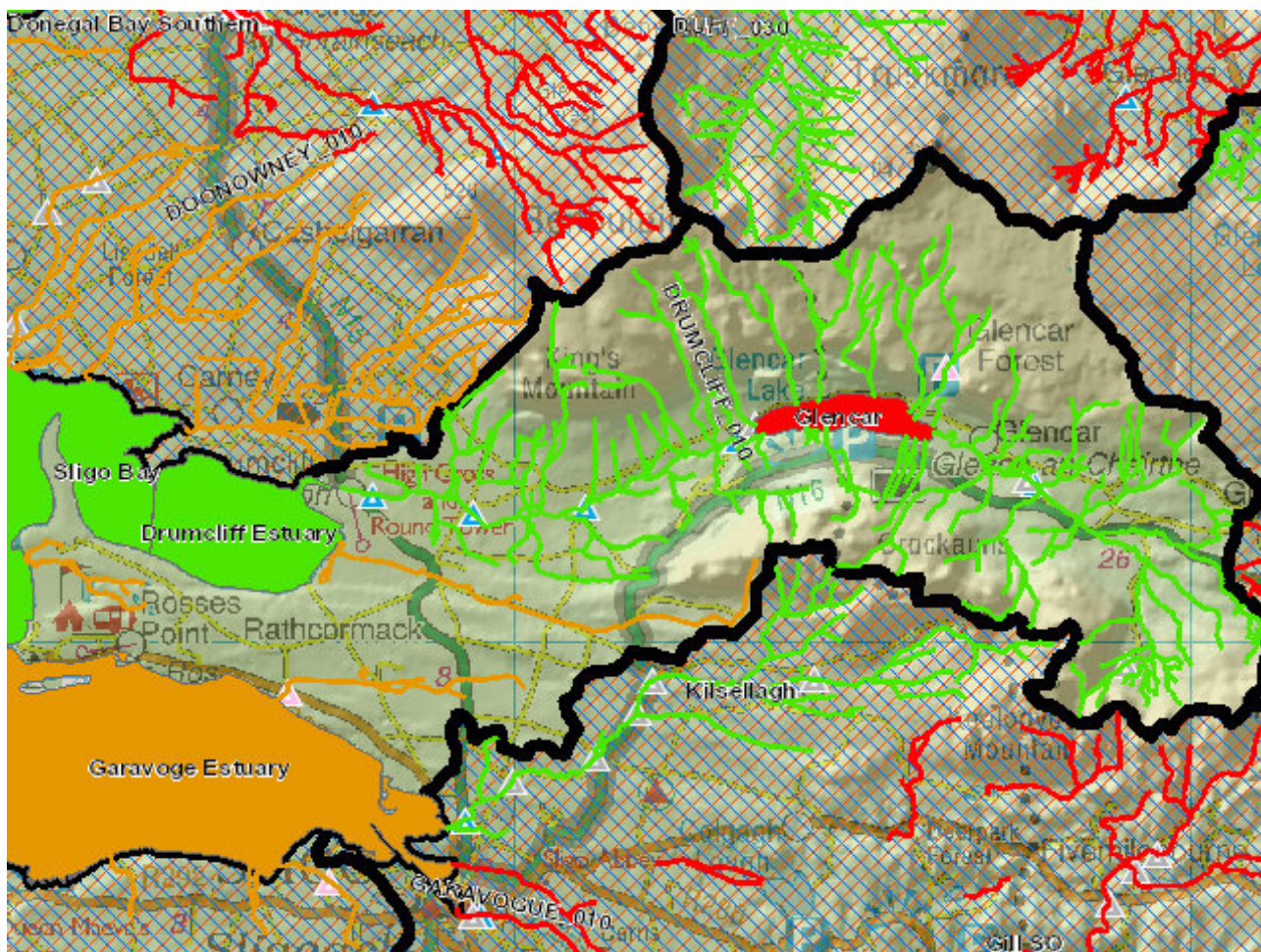


Evaluation of Priority Subcatchment Issues

Unassigned river water body, Cregg 35_010 was revised to Review, pending the outcome of a local catchment assessment to determine the risk status of the water body.

At Risk water body, Glencar Lough, returned Moderate ecological status in 2012-2012 and 2013-2015. Nutrient concentrations appear low, however, Zebra Mussels are confirmed to be present in the lake. Also, a landslide was also noted to have occurred in the vicinity of in lake around 2014. Further characterisation is needed to determine to significant pressures affecting this water body.

Map Subcatchment Risk Map

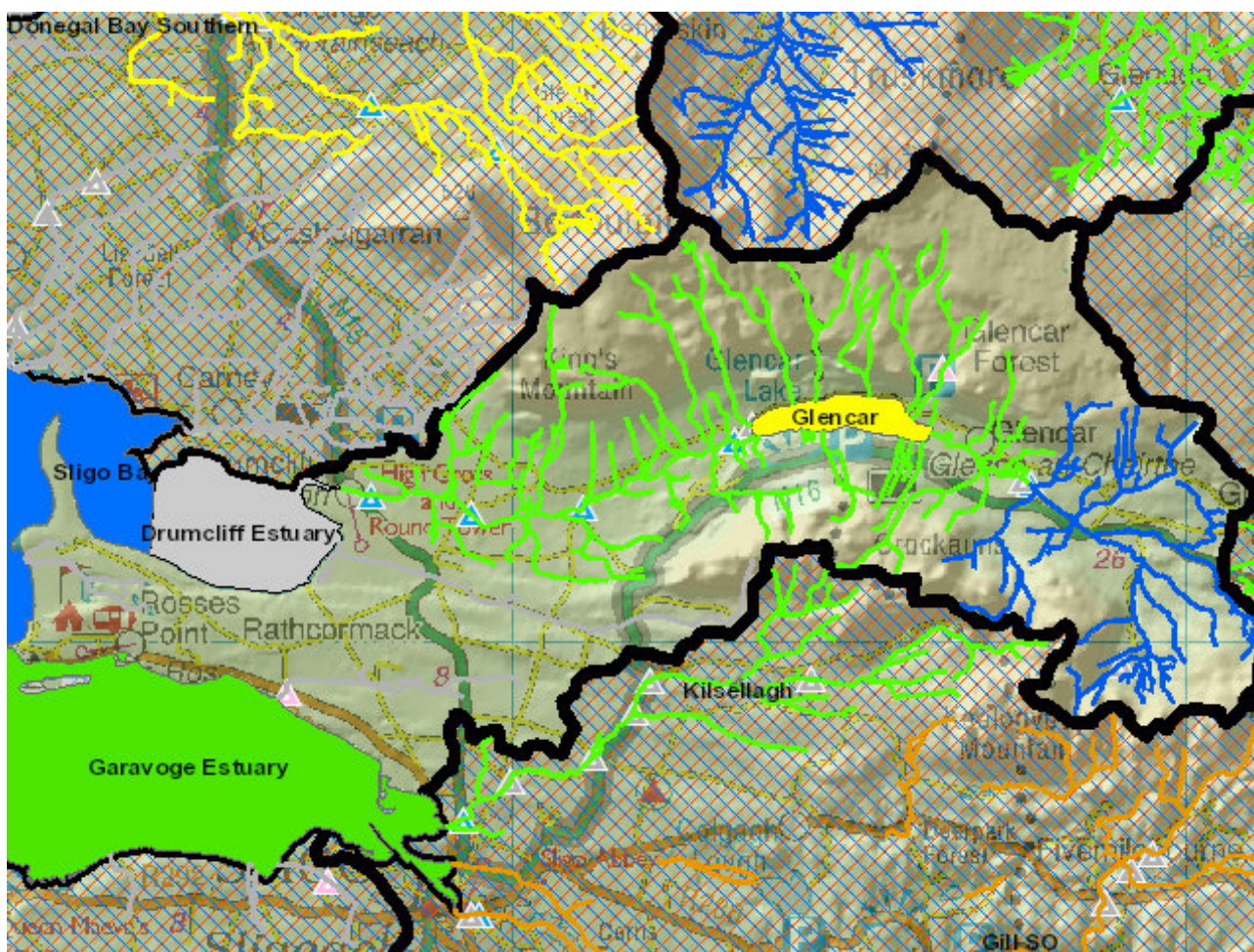


River And Lake Waterbodies: WFD Risk

The following river and lake waterbodies are in the subcatchment.

Code	Name	Type	WFD Risk	Significant Pressure
IE_WE_35_139	Glencar	Lake	At risk	Yes
IE_WE_35C980970	Cregg (Sligo)_010	River	Review	No
IE_WE_35D040250	DRUMCLIFF_010	River	Not at risk	No
IE_WE_35D040400	DRUMCLIFF_020	River	Not at risk	No

Map Subcatchment Water Quality Status Map



River And Lake Waterbodies: Water Quality Status

The water quality status of river and lake waterbodies in the subcatchment is as follows.

Code	Name	Type	2007-09	2010-12	2010-15
IE_WE_35C980970	Cregg (Sligo)_010	River	Unassigned	Unassigned	Unassigned
IE_WE_35D010100	DIFFREEN_010	River	Good	Good	High
IE_WE_35D040250	DRUMCLIFF_010	River	Poor	Moderate	Good
IE_WE_35D040400	DRUMCLIFF_020	River	Good	Good	Good
IE_WE_35_139	Glencar	Lake	Good	Moderate	Moderate

Potentially Dependent Transitional and Coastal Waterbodies

The Transitional and Coastal waterbodies listed below intersect spatially with river and lake waterbodies in the subcatchment ...

Code	Name	Type	Local Authority	WFD Risk
IE_WE_450_0000	Sligo Bay	Coastal	Sligo County Council	Not at risk
IE_WE_470_0100	Garavoge Estuary	Transitional	Sligo County Council	Review
IE_WE_480_0100	Drumcliff Estuary	Transitional	Sligo County Council	Not at risk

Potentially Dependent Groundwater Waterbodies

The groundwaters listed below intersect spatially with river and lake waterbodies in the subcatchment ...

Code	Name	Type	Local Authority	WFD Risk
IE_NW_G_073	Tievebaun	Groundwater	Leitrim County Council	Review
IE_WE_G_0042	Carrowmore East	Groundwater	Sligo County Council	At risk
IE_WE_G_0044	Drumcliff-Strandhill	Groundwater	Sligo County Council	Review
IE_WE_G_0053	Rosses Point	Groundwater	Sligo County Council	Not at risk
IE_WE_G_0054	Dromahair	Groundwater	Leitrim County Council	Not at risk
IE_WE_G_0060	Glencar	Groundwater	Leitrim County Council	Review
IEGBNI_NW_G_04 4	Rossinver	Groundwater	Leitrim County Council	Review

Protected Areas intersecting River and Lake Waterbodies

The Protected Areas listed below intersect spatially with river and lake waterbodies in the subcatchment ...

Code	Name	Type	Waterbody Name	Association Type
IE0000627	Cummeen Strand/Drumcliff Bay (Sligo Bay) SAC	SAC	Cregg (Sligo)_010	Overlapping / partly within Protected Area
IE0000627	Cummeen Strand/Drumcliff Bay (Sligo Bay) SAC	SAC	DRUMCLIFF_020	Overlapping / partly within Protected Area
IE0004013	Drumcliff Bay SPA	SPA	DRUMCLIFF_020	Overlapping / partly within Protected Area
IE0004013	Drumcliff Bay SPA	SPA	Cregg (Sligo)_010	Overlapping / partly within Protected Area
IE0004035	Cummeen Strand SPA	SPA	Cregg (Sligo)_010	Overlapping / partly within Protected Area

Pressures

Below is a list of all significant pressures identified in the subcatchment.

Code	Name	WFD Risk	Pressure Category	Pressure Sub Category
IE_WE_35_139	Glencar	At risk	Invasive Species	Invasive species
IE_WE_35_139	Glencar	At risk	Agriculture	Agriculture
IE_WE_G_0042	Carrowmore East	At risk	Forestry	Forestry
IE_NW_G_073	Tievebaun	Review	Anthropogenic Pressures	Unknown
IE_WE_470_0100	Garavoge Estuary	Review	Anthropogenic Pressures	Unknown
IE_WE_G_0044	Drumcliff-Strandhill	Review	Anthropogenic Pressures	Unknown
IE_WE_G_0060	Glencar	Review	Anthropogenic Pressures	Unknown
IEGBNI_NW_G_044	Rossinver	Review	Anthropogenic Pressures	Unknown

Further Characterisation Actions

The following further characterisation actions have been identified. These are necessary to help understand more fully issues in the subcatchment and their likely cause.

Code	Name	Action	Responsible Organisation
IE_WE_35_139	Glencar	IA9 Lake pressures	Leitrim County Council
IE_WE_35C980970	Cregg (Sligo)_010	IA3 Determination of Water Quality (unassigned waterbody)	Sligo County Council