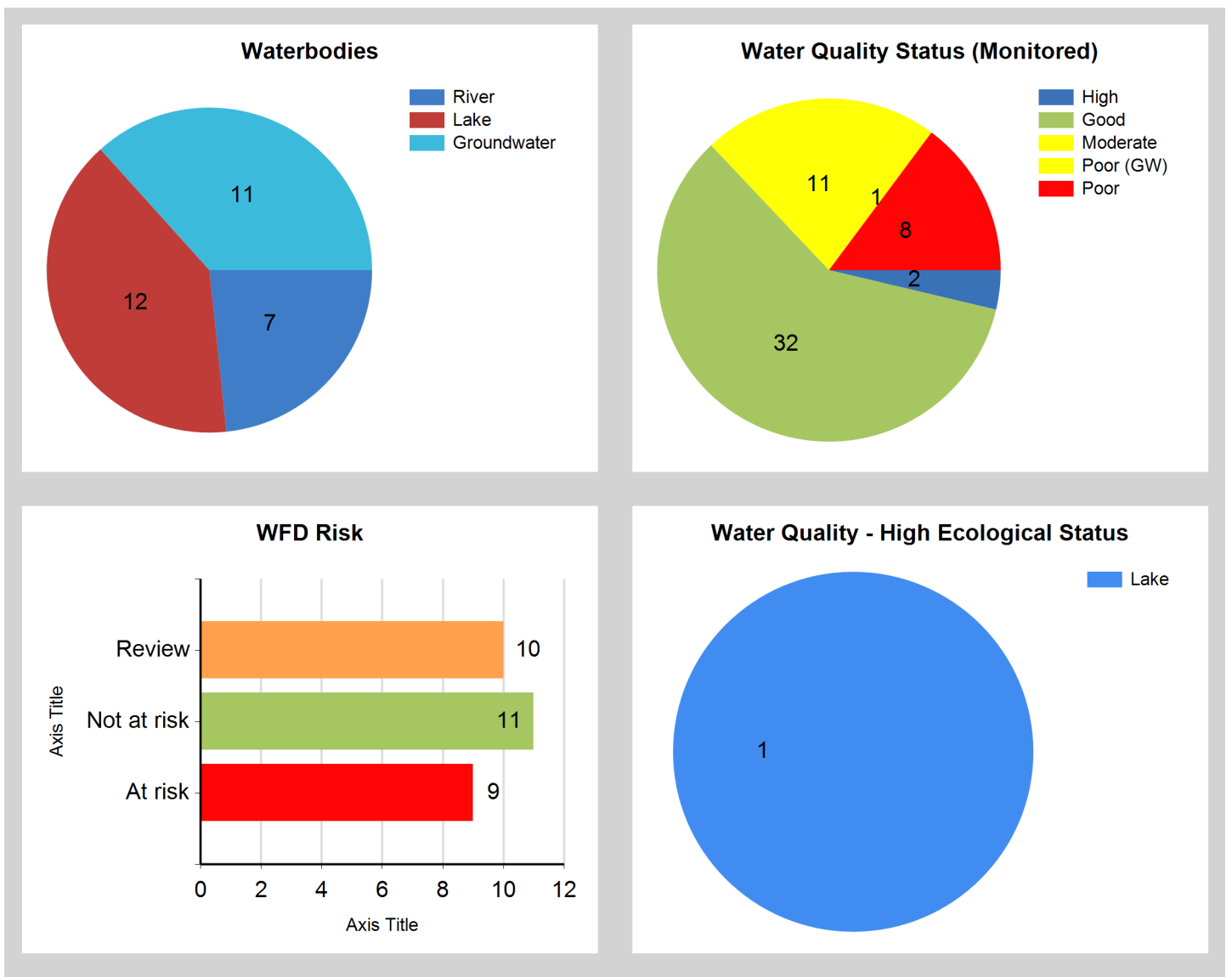


Assessment Purpose

This assessment has been produced as part of the national characterisation programme undertaken for the second cycle of Water Framework Directive river basin management planning. It has been led by the EPA, with input from Local Authorities and other public bodies, and with support from RPS consultants.

The characterisation assessments are automatically generated from the information stored in the WFD Application. They are based on information available to the end of 2015 but may be subject to change until the final 2018-21 river basin management plan is published. Users should ensure that they have the most up to date information by downloading the latest assessment before use.

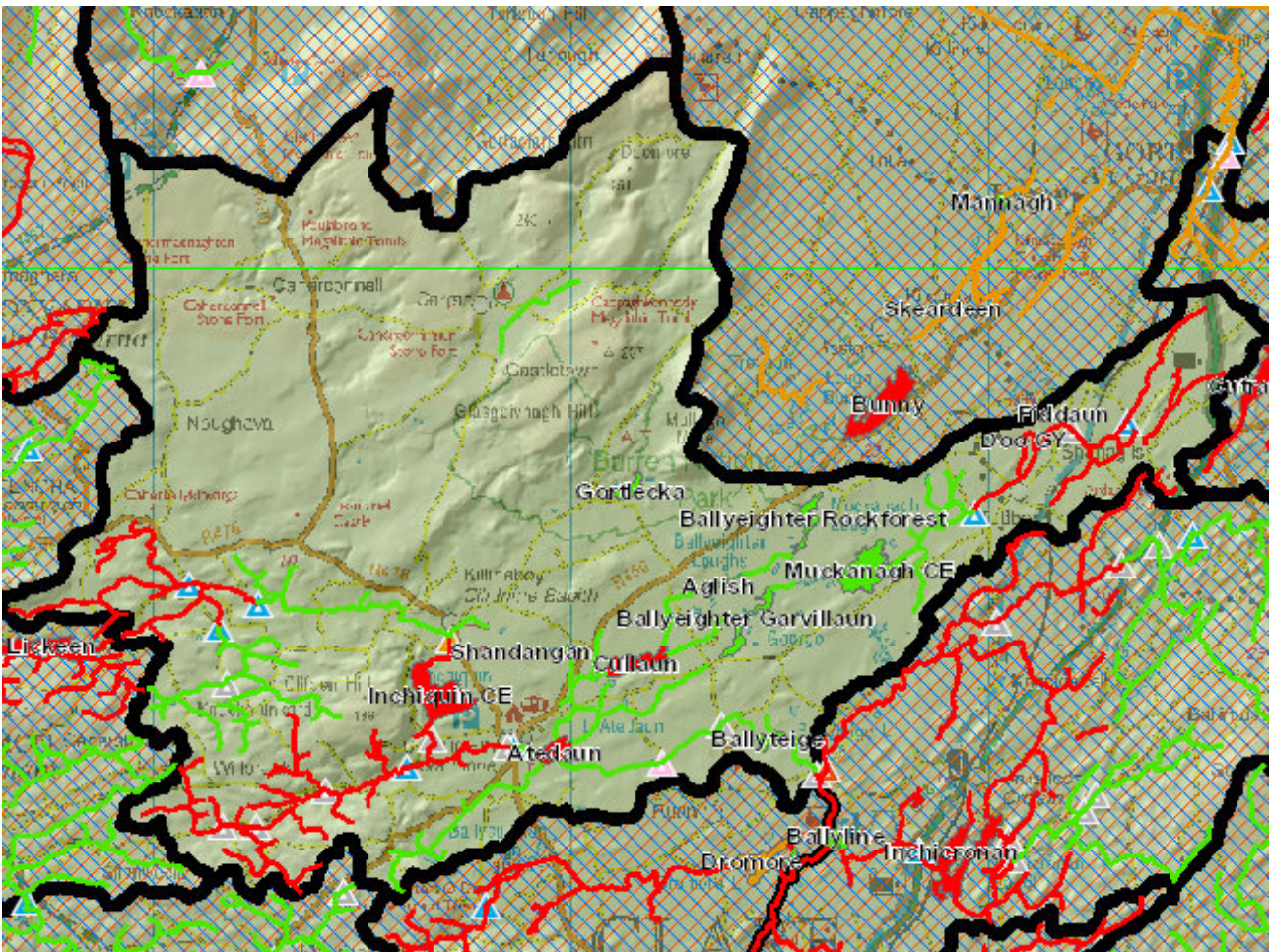


Evaluation of Priority Subcatchment Issues

Four out of seven river water bodies are AT RISK: Cloneen (Clare)_010 Castlelodge_010 and Craggaunboy_010 due to Poor biological status (driven by invertebrates) and; Fergus_020 due to Moderate biological status (driven by invertebrates). Three out of twelve lake water bodies are AT RISK: Atedaun due to Moderate biological status (driven by macrophytes), elevated total phosphate and the presence of zebra mussels; Callaun due to not meeting its High Ecological Status objective (i.e. Moderate biological status driven by phytoplankton) and; Inchiquin CE due to Moderate biological status (driven by macrophytes). Fiddaun and Doo GY are under REVIEW due to their unassigned status.

Siltation was noted as an issue within Cloneen (Clare)_010, Craggaunboy_010 and Castlelodge_010 with agriculture and forestry highlighted as potential significant pressures. Groundwater input may be masking issues within Fergus_020 with agriculture and diffuse urban likely to be the significant pressures. Enrichment was noted within lakes Atedaun, Callaun and Inchiquin CE with agriculture identified as a possible significant pressure.

Map Subcatchment Risk Map

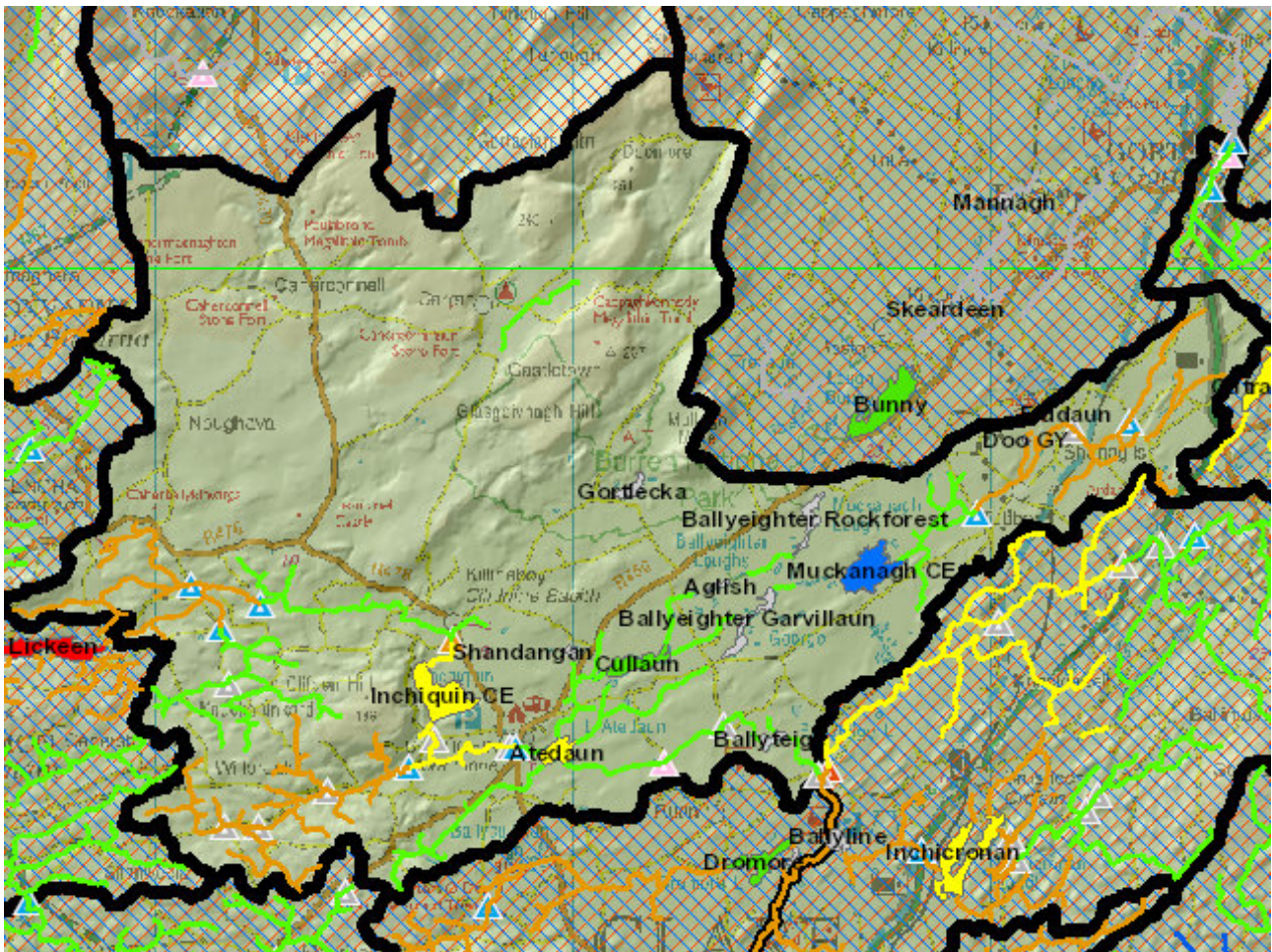


River And Lake Waterbodies: WFD Risk

The following river and lake waterbodies are in the subcatchment.

Code	Name	Type	WFD Risk	Significant Pressure
IE_SH_27_108	Atedaun	Lake	At risk	Yes
IE_SH_27_115	Cullaun	Lake	At risk	Yes
IE_SH_27_130	Inchiquin CE	Lake	At risk	Yes
IE_SH_27C010900	CASTLELODGE_010	River	At risk	Yes
IE_SH_27C030300	CLOONEEN (CLARE)_010	River	At risk	Yes
IE_SH_27C040600	CRAGGAUNBOY_010	River	At risk	Yes
IE_SH_27F010300	FERGUS_020	River	At risk	Yes
IE_SH_27_177	Fiddaun	Lake	Review	Yes
IE_SH_27_70	Doo GY	Lake	Review	Yes

Map Subcatchment Water Quality Status Map



River And Lake Waterbodies: Water Quality Status

The water quality status of river and lake waterbodies in the subcatchment is as follows.

Code	Name	Type	2007-09	2010-12	2010-15
IE_SH_27_303	Aglish	Lake	Unassigned	Unassigned	Unassigned
IE_SH_27_108	Atedaun	Lake	Moderate	Moderate	Moderate
IE_SH_27_119	Ballyeigher Garvillaun	Lake	Unassigned	Unassigned	Unassigned
IE_SH_27_106	Ballyeigher Rockforest	Lake	Unassigned	Unassigned	Unassigned
IE_SH_27_56	Ballyteige	Lake	Unassigned	Unassigned	Unassigned
IE_SH_27C010900	CASTLELODGE_010	River	Poor	Poor	Poor
IE_SH_27C030300	CLOONEEN (CLARE)_010	River	Poor	Moderate	Poor
IE_SH_27C040600	CRAGGAUNBOY_010	River	Poor	Moderate	Poor
IE_SH_27_115	Cullaun	Lake	High	Good	Good
IE_SH_27_70	Doo GY	Lake	Unassigned	Unassigned	Unassigned
IE_SH_27F010100	FERGUS_010	River	Good	Good	Good
IE_SH_27F010300	FERGUS_020	River	Good	Moderate	Moderate
IE_SH_27F010400	FERGUS_030	River	Unassigned	Good	Good
IE_SH_27_177	Fiddaun	Lake	Unassigned	Unassigned	Unassigned
IE_SH_27_102	Gortlecka	Lake	Unassigned	Unassigned	Unassigned
IE_SH_27_130	Inchiquin CE	Lake	Moderate	Moderate	Moderate
IE_SH_27K040400	KILMORE NORTH STREAM_010	River	Good	Poor	Good
IE_SH_27_94	Muckanagh CE	Lake	Good	Moderate	High
IE_SH_27_33	Shandangan	Lake	Unassigned	Unassigned	Unassigned

Potentially Dependent Transitional and Coastal Waterbodies

The Transitional and Coastal waterbodies listed below intersect spatially with river and lake waterbodies in the subcatchment ...

Code	Name	Type	Local Authority	WFD Risk
------	------	------	-----------------	----------

Potentially Dependent Groundwater Waterbodies

The groundwaters listed below intersect spatially with river and lake waterbodies in the subcatchment ...

Code	Name	Type	Local Authority	WFD Risk
IE_SH_G_047	Burren	Groundwater	Clare County Council	Review
IE_SH_G_069	Craggaunboy	Groundwater	Clare County Council	Review
IE_SH_G_071	Crusheen	Groundwater	Clare County Council	Review
IE_SH_G_080	Ennis	Groundwater	Clare County Council	At risk
IE_SH_G_167	Milltown Malbay	Groundwater	Clare County Council	Review
IE_SH_G_212	Slieve Elva	Groundwater	Clare County Council	Review
IE_WE_G_0001	Ballyvaughan Uplands	Groundwater	Clare County Council	Not at risk
IE_WE_G_0002	Kinvara-Gort	Groundwater	Galway County Council	Review
IE_WE_G_0091	GWDTE-Caherglassaun Turlough (SAC000238)	Groundwater	Galway County Council	At risk
IE_WE_G_0095	GWDTE-Gortboyheen Turlough (SAC000054)	Groundwater	Clare County Council	Review
IE_WE_G_0098	GWDTE-Lough Mannagh Turlough (SAC001926)	Groundwater	Clare County Council	Review

Protected Areas intersecting River and Lake Waterbodies

The Protected Areas listed below intersect spatially with river and lake waterbodies in the subcatchment ...

Code	Name	Type	Waterbody Name	Association Type
IEPA1_SH_27F010 300	FERGUS_020	Drinking Water	FERGUS_020	Within Protected Area
IEPA5D0013	River Fergus	Salmonid	FERGUS_020	Overlapping / partly within Protected Area
IEPA5D0013	River Fergus	Salmonid	FERGUS_030	Overlapping / partly within Protected Area
IEPA5D0013	River Fergus	Salmonid	CLOONEEN (CLARE)_010	Overlapping / partly within Protected Area
IEPA5D0013	River Fergus	Salmonid	FERGUS_010	Overlapping / partly within Protected Area

Pressures

Below is a list of all significant pressures identified in the subcatchment.

Code	Name	WFD Risk	Pressure Category	Pressure Sub Category
IE_SH_27_108	Atedaun	At risk	Agriculture	Agriculture
IE_SH_27_115	Cullaun	At risk	Agriculture	Agriculture
IE_SH_27_130	Inchiquin CE	At risk	Agriculture	Agriculture
IE_SH_27C010900	CASTLELODGE_010	At risk	Forestry	Forestry
IE_SH_27C010900	CASTLELODGE_010	At risk	Agriculture	Pasture
IE_SH_27C030300	CLOONEEN (CLARE)_010	At risk	Agriculture	Pasture
IE_SH_27C030300	CLOONEEN (CLARE)_010	At risk	Forestry	Forestry
IE_SH_27C040600	CRAGGAUNBOY_010	At risk	Forestry	Forestry
IE_SH_27C040600	CRAGGAUNBOY_010	At risk	Agriculture	Pasture
IE_SH_27F010300	FERGUS_020	At risk	Urban Run-off	Diffuse Sources Run-Off
IE_SH_27F010300	FERGUS_020	At risk	Agriculture	Pasture
IE_SH_G_080	Ennis	At risk	Agriculture	Agriculture
IE_WE_G_0091	GWDTE-Caherglassaun Turlough (SAC000238)	At risk	Forestry	Forestry
IE_SH_27_177	Fiddaun	Review	Agriculture	Pasture
IE_SH_27_70	Doo GY	Review	Forestry	Forestry
IE_SH_27_70	Doo GY	Review	Agriculture	Agriculture
IE_SH_G_047	Burren	Review	Anthropogenic Pressures	Unknown
IE_SH_G_069	Craggaunboy	Review	Anthropogenic Pressures	Unknown
IE_SH_G_071	Crusheen	Review	Anthropogenic Pressures	Unknown
IE_SH_G_167	Milltown Malbay	Review	Anthropogenic Pressures	Unknown
IE_SH_G_212	Slieve Elva	Review	Anthropogenic Pressures	Unknown
IE_WE_G_0002	Kinvara-Gort	Review	Anthropogenic Pressures	Unknown
IE_WE_G_0095	GWDTE-Gortboyheen Turlough (SAC000054)	Review	Anthropogenic Pressures	Unknown
IE_WE_G_0098	GWDTE-Lough Mannagh Turlough (SAC001926)	Review	Anthropogenic Pressures	Unknown

Further Characterisation Actions

The following further characterisation actions have been identified. These are necessary to help understand more fully issues in the subcatchment and their likely cause.

Code	Name	Action	Responsible Organisation
IE_SH_27C040600	CRAGGAUNBOY_010	IA5 Multiple Sources in defined rural area (1km) or waterbody or rural town	Clare County Council
IE_SH_27C010900	CASTLELODGE_010	IA7 Multiple Sources in Multiple Areas	Clare County Council
IE_SH_27_130	Inchiquin CE	IA9 Lake pressures	Clare County Council
IE_SH_27F010300	FERGUS_020	IA6 Multiple Sources in Large Urban Area	Clare County Council
IE_SH_27_108	Atedaun	IA10 Groundwater pressures	Clare County Council
IE_SH_27F010300	FERGUS_020	IA5 Multiple Sources in defined rural area (1km) or waterbody or rural town	Clare County Council
IE_SH_27_115	Cullaun	IA8 High status RWB pressures	Clare County Council
IE_SH_27_177	Fiddaun	IA3 Determination of Water Quality (unassigned waterbody)	Clare County Council
IE_SH_27_70	Doo GY	IA3 Determination of Water Quality (unassigned waterbody)	Clare County Council
IE_SH_27C030300	CLOONEEN (CLARE)_010	IA5 Multiple Sources in defined rural area (1km) or waterbody or rural town	Clare County Council