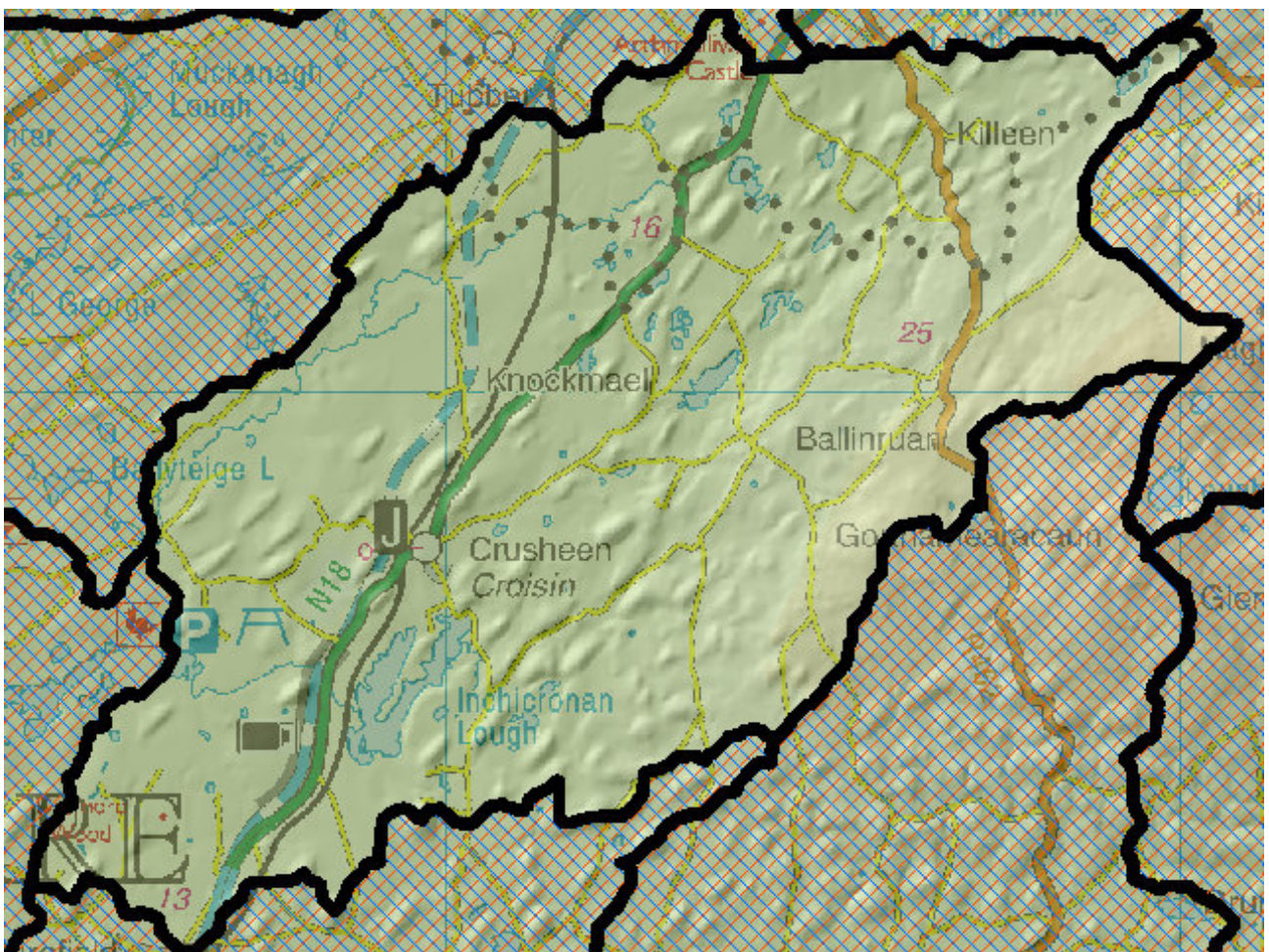


# WFD Cycle 2

Catchment Shannon Estuary North

Subcatchment Fergus\_SC\_020

Code 27\_14



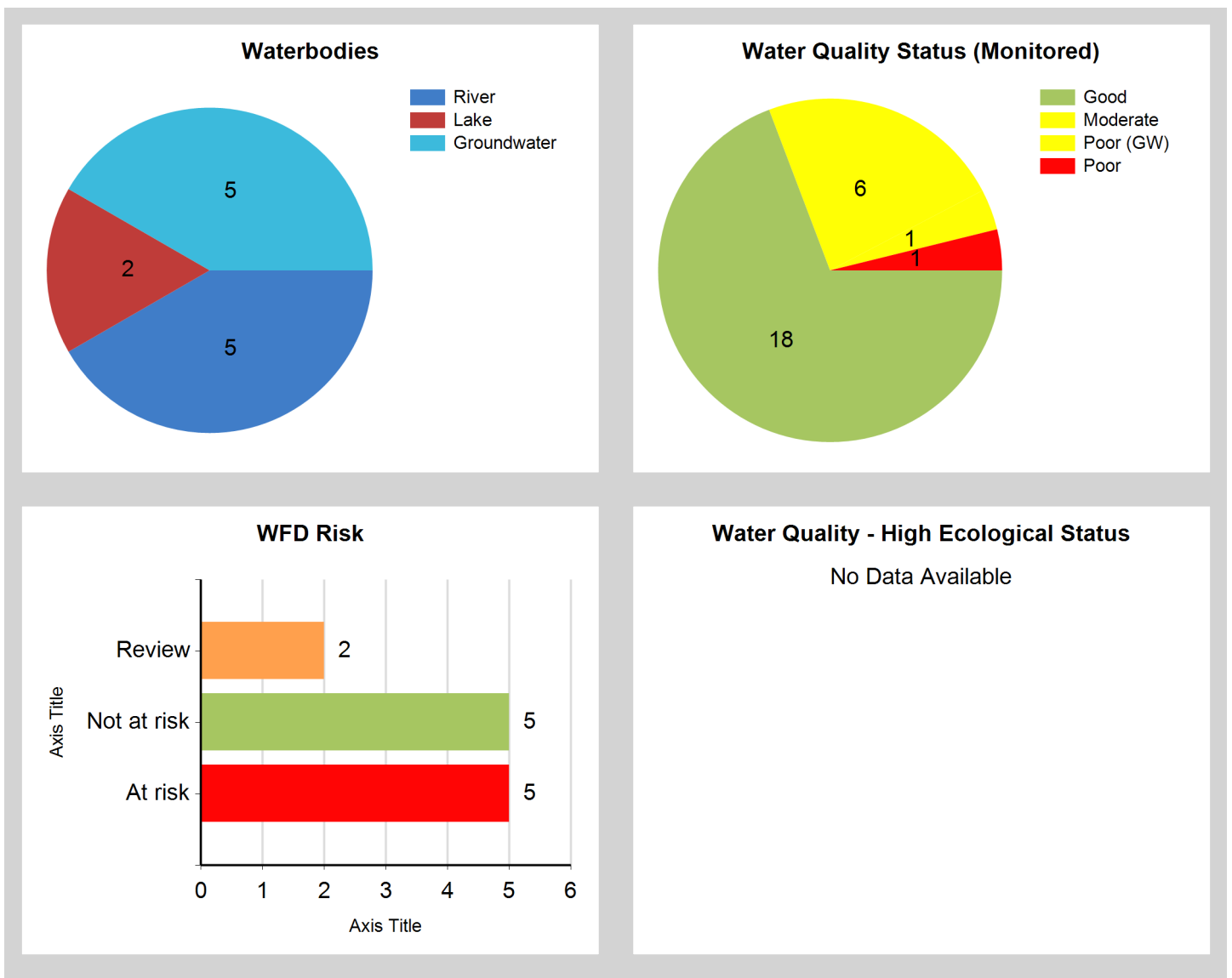
© Ordnance Survey Ireland. All rights reserved. Licence Number EN 0059208

Generated on: 11 Jan 2019

## Assessment Purpose

This assessment has been produced as part of the national characterisation programme undertaken for the second cycle of Water Framework Directive river basin management planning. It has been led by the EPA, with input from Local Authorities and other public bodies, and with support from RPS consultants.

The characterisation assessments are automatically generated from the information stored in the WFD Application. They are based on information available to the end of 2015 but may be subject to change until the final 2018-21 river basin management plan is published. Users should ensure that they have the most up to date information by downloading the latest assessment before use.

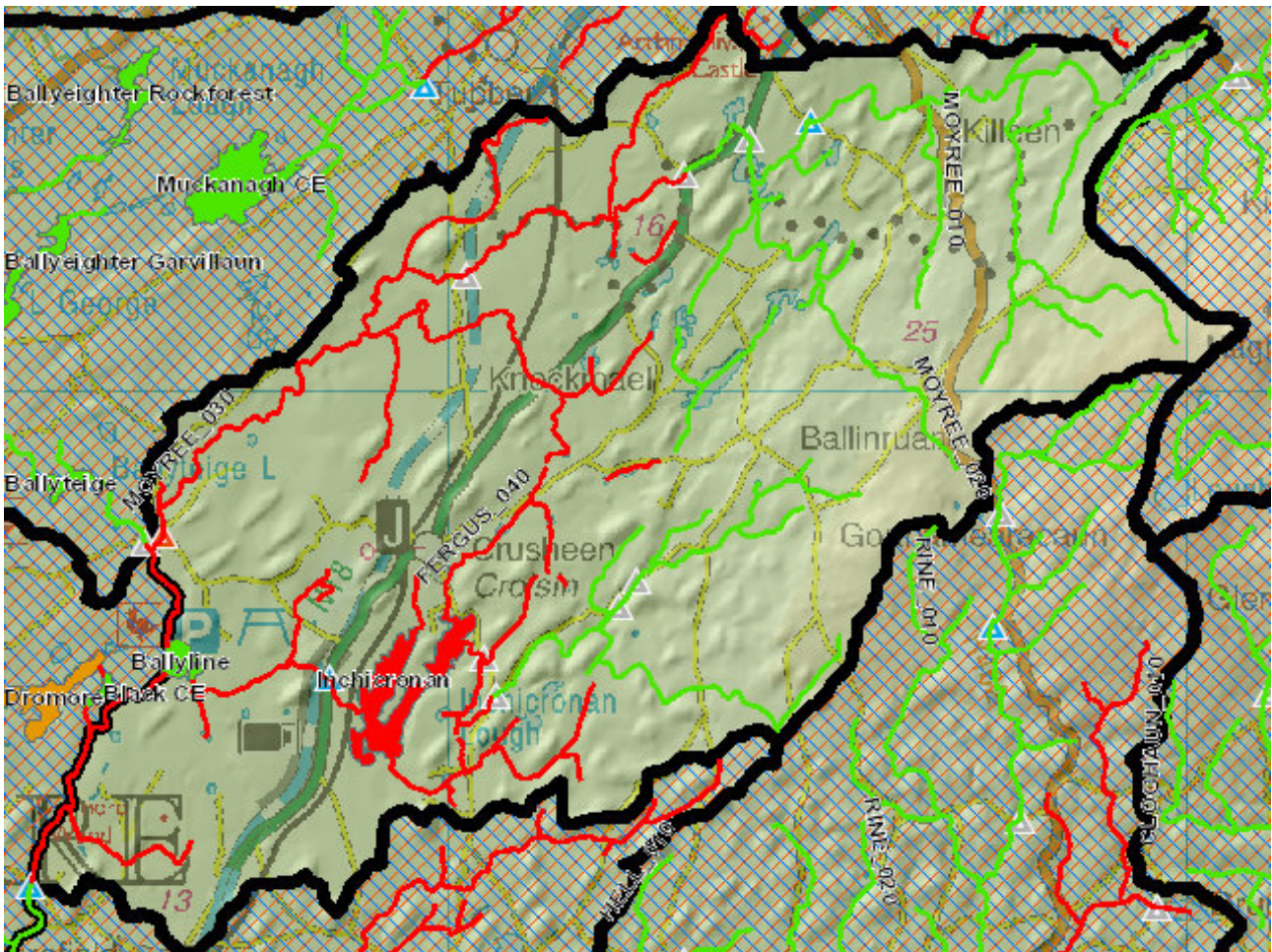


## Evaluation of Priority Subcatchment Issues

Two out of five river water bodies within this subcatchment are AT RISK: Moyree\_030 due to Moderate biological status (driven by fish) and; Fergus\_040 due to Poor biological status (driven by invertebrates). One out of two lake water bodies are AT RISK, Inchicronan due to Moderate biological status (driven by macrophytes and phytoplankton) and the presence of zebra mussels.

A barrier is impacting the Fish status of Moyree\_030. Siltation is an issue within Fergus\_040 with agriculture and forestry identified as the significant pressures. Presence of significant pressures were not identified within Inchicronan and a local catchment assessment is required.

## Map Subcatchment Risk Map

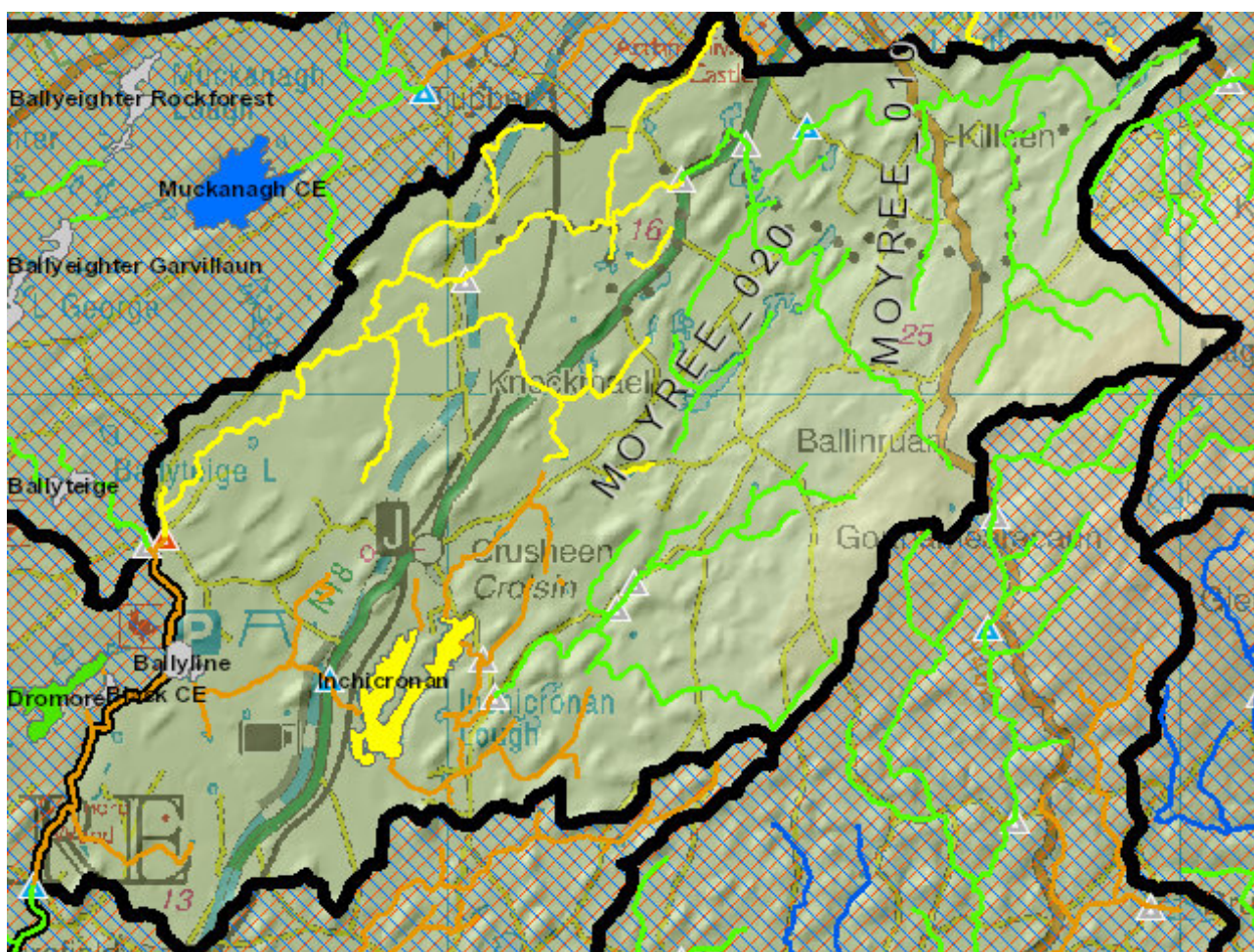


## River And Lake Waterbodies: WFD Risk

The following river and lake waterbodies are in the subcatchment.

Code	Name	Type	WFD Risk	Significant Pressure
IE_SH_27_126	Inchicronan	Lake	At risk	Yes
IE_SH_27F010500	FERGUS_040	River	At risk	Yes
IE_SH_27M020700	MOYREE_030	River	At risk	Yes
IE_SH_27_63	Ballyline	Lake	Not at risk	Yes

## Map Subcatchment Water Quality Status Map



## River And Lake Waterbodies: Water Quality Status

The water quality status of river and lake waterbodies in the subcatchment is as follows.

Code	Name	Type	2007-09	2010-12	2010-15
IE_SH_27_63	Ballyline	Lake	Unassigned	Unassigned	Unassigned
IE_SH_27F010500	FERGUS_040	River	Moderate	Moderate	Poor
IE_SH_27_126	Inchicronan	Lake	Good	Good	Moderate
IE_SH_27M030900	MILL BROOK_010	River	Unassigned	Good	Good
IE_SH_27M020300	MOYREE_010	River	Good	Good	Good
IE_SH_27M020500	MOYREE_020	River	Unassigned	Good	Good
IE_SH_27M020700	MOYREE_030	River	Moderate	Moderate	Moderate

## Potentially Dependent Transitional and Coastal Waterbodies

The Transitional and Coastal waterbodies listed below intersect spatially with river and lake waterbodies in the subcatchment ...

Code	Name	Type	Local Authority	WFD Risk
------	------	------	-----------------	----------

## Potentially Dependent Groundwater Waterbodies

The groundwaters listed below intersect spatially with river and lake waterbodies in the subcatchment ...

Code	Name	Type	Local Authority	WFD Risk
IE_SH_G_071	Crusheen	Groundwater	Clare County Council	Review
IE_SH_G_080	Ennis	Groundwater	Clare County Council	At risk
IE_SH_G_157	Lough Graney	Groundwater	Clare County Council	Not at risk
IE_SH_G_229	Tulla-Newmarket on Fergus	Groundwater	Clare County Council	Review
IE_WE_G_0091	GWDTE-Caherglassaun Turlough (SAC000238)	Groundwater	Galway County Council	At risk

## Protected Areas intersecting River and Lake Waterbodies

The Protected Areas listed below intersect spatially with river and lake waterbodies in the subcatchment ...

Code	Name	Type	Waterbody Name	Association Type
IEPA5D0013	River Fergus	Salmonid	FERGUS_040	Overlapping / partly within Protected Area

## Pressures

Below is a list of all significant pressures identified in the subcatchment.

Code	Name	WFD Risk	Pressure Category	Pressure Sub Category
IE_SH_27_126	Inchicronan	At risk	Invasive Species	Invasive species
IE_SH_27_126	Inchicronan	At risk	Anthropogenic Pressures	Unknown
IE_SH_27F010500	FERGUS_040	At risk	Forestry	Forestry
IE_SH_27F010500	FERGUS_040	At risk	Agriculture	Agriculture
IE_SH_27M020700	MOYREE_030	At risk	Hydromorphology	Dams, barriers, locks, weirs
IE_SH_G_080	Ennis	At risk	Agriculture	Agriculture
IE_WE_G_0091	GWDTE-Caherglassaun Turlough (SAC000238)	At risk	Forestry	Forestry
IE_SH_G_071	Crusheen	Review	Anthropogenic Pressures	Unknown
IE_SH_G_229	Tulla-Newmarket on Fergus	Review	Anthropogenic Pressures	Unknown

## Further Characterisation Actions

The following further characterisation actions have been identified. These are necessary to help understand more fully issues in the subcatchment and their likely cause.

Code	Name	Action	Responsible Organisation
IE_SH_27_126	Inchicronan	IA9 Lake pressures	Clare County Council
IE_SH_27M020700	MOYREE_030	IA1 Provision of Information	Inland Fisheries Ireland
IE_SH_27F010500	FERGUS_040	IA1 Provision of Information	Environmental Protection Agency