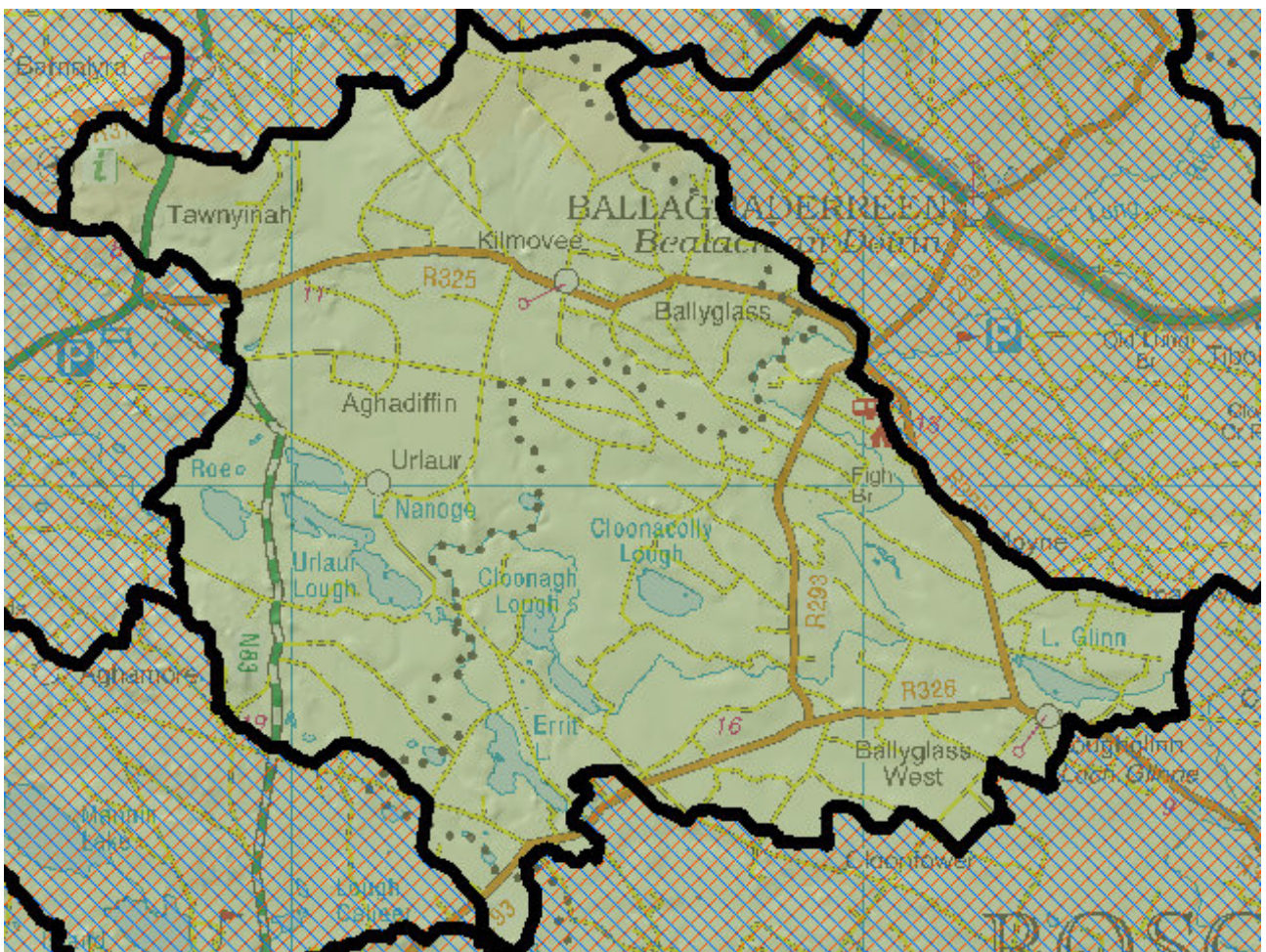


WFD Cycle 2

Catchment Upper Shannon

Subcatchment Lung_SC_010

Code 26B_2



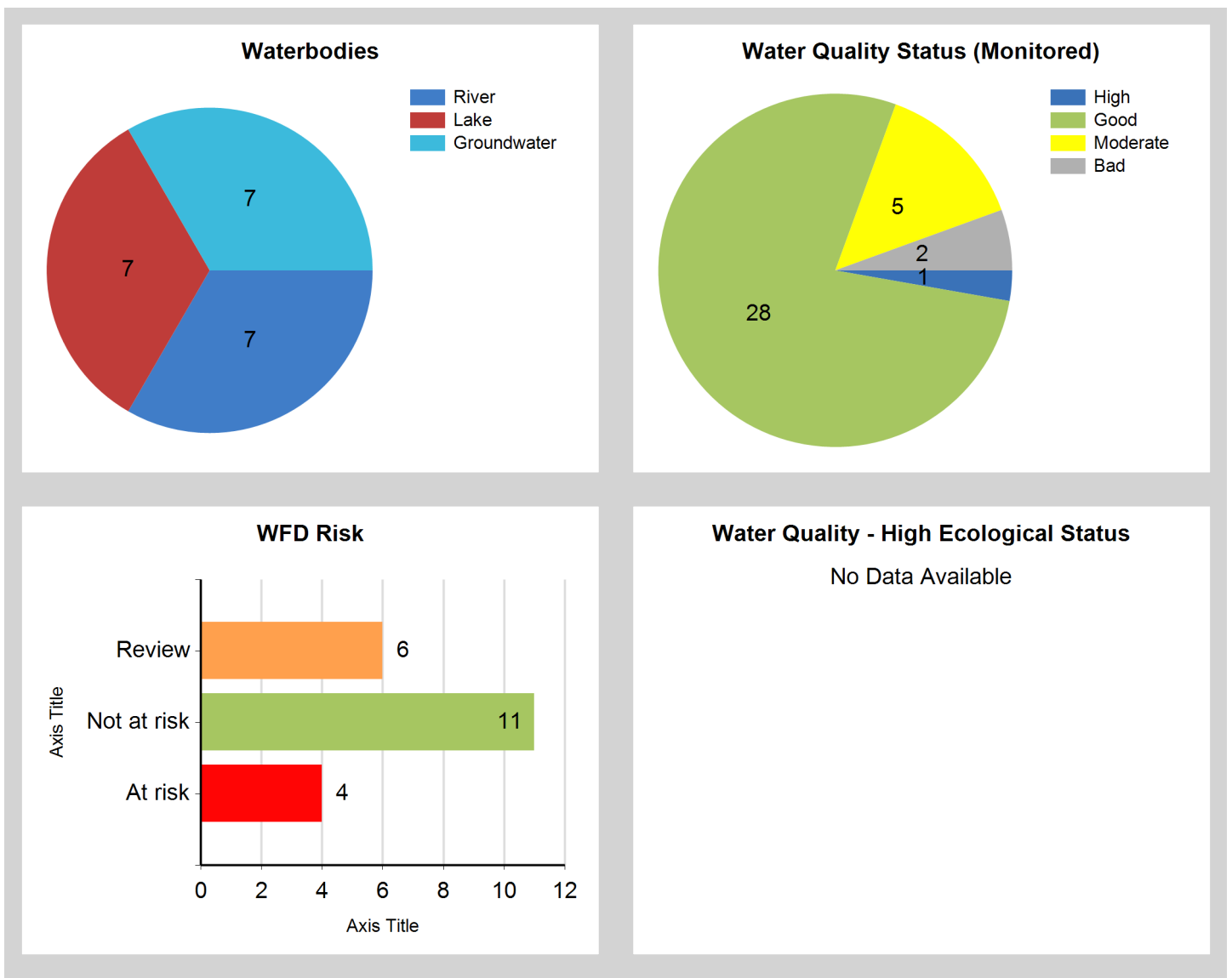
© Ordnance Survey Ireland. All rights reserved. Licence Number EN 0059208

Generated on: 11 Jan 2019

Assessment Purpose

This assessment has been produced as part of the national characterisation programme undertaken for the second cycle of Water Framework Directive river basin management planning. It has been led by the EPA, with input from Local Authorities and other public bodies, and with support from RPS consultants.

The characterisation assessments are automatically generated from the information stored in the WFD Application. They are based on information available to the end of 2015 but may be subject to change until the final 2018-21 river basin management plan is published. Users should ensure that they have the most up to date information by downloading the latest assessment before use.



Evaluation of Priority Subcatchment Issues

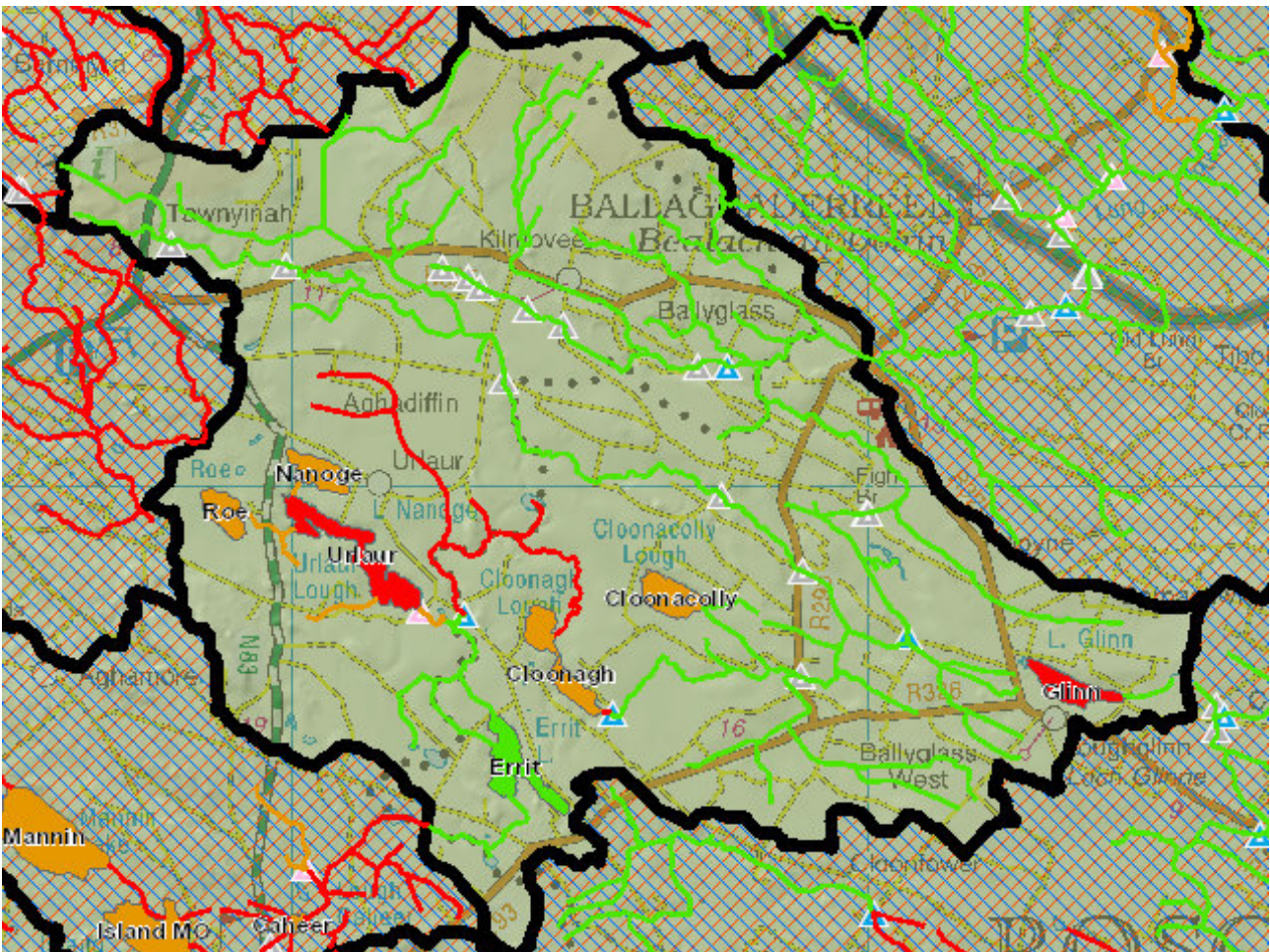
Lough Glinn, Lough Urlaur and Anaderryboy_020 are At Risk.

Deterioration in the status of Anaderryboy_020 is most likely due to peat and hydromorphological pressures, but there are no chemistry data available to confirm. Boyle arterial drainage scheme is located throughout this water body and therefore, may contribute to habitat degradation. It has been suggested that Lough Glinn be dropped from the EPA monitoring network as it is man made with controlled outflow, often dry in the summer.

Zebra mussels are present within Lough Urlaur and may be affecting fish (fish is driving the failing ecological status). However, many factors can contribute to fish status so further discussion on possible pressures will be required. Inland Fisheries Ireland will also need to be consulted prior to any local catchment assessment.

Local catchment assessments will need to be carried out on assigned water bodies, Cloonacolly, Nanoge, Roe, Cloonagh and Cummer_26_010, to determine the risk status.

Map Subcatchment Risk Map

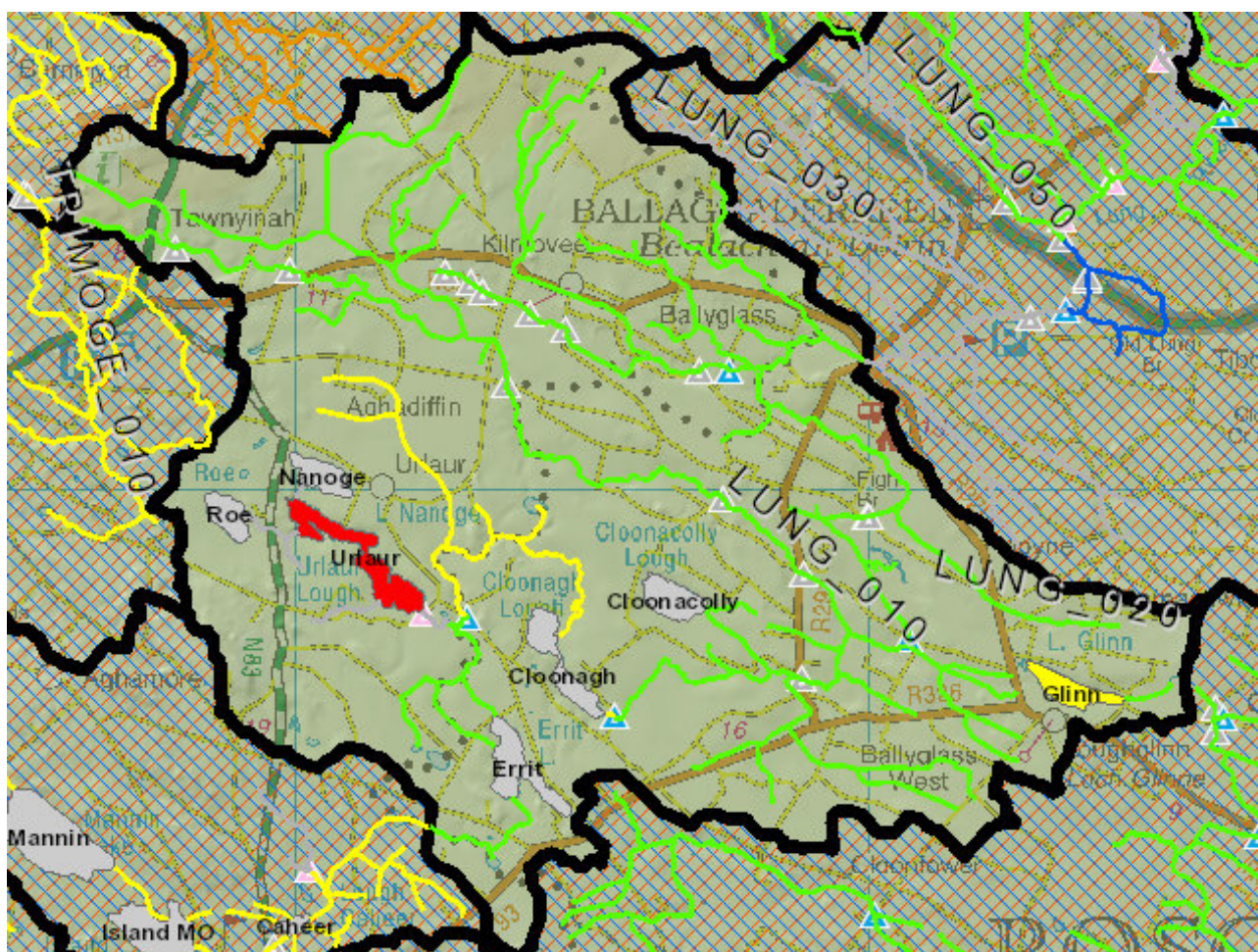


River And Lake Waterbodies: WFD Risk

The following river and lake waterbodies are in the subcatchment.

Code	Name	Type	WFD Risk	Significant Pressure
IE_SH_26_661	Glinn	Lake	At risk	Yes
IE_SH_26_689	Urlaur	Lake	At risk	Yes
IE_SH_26A030400	ANADERRYBOY_020	River	At risk	Yes
IE_SH_26_580	Nanoge	Lake	Review	No
IE_SH_26_630	Roe	Lake	Review	No
IE_SH_26_697	Cloonagh	Lake	Review	Yes
IE_SH_26C270690	Cummer (Mayo)_010	River	Review	No
IE_SH_26L030200	LUNG_020	River	Not at risk	Yes

Map Subcatchment Water Quality Status Map



River And Lake Waterbodies: Water Quality Status

The water quality status of river and lake waterbodies in the subcatchment is as follows.

Code	Name	Type	2007-09	2010-12	2010-15
IE_SH_26A030100	ANADERRYBOY_010	River	Good	Good	Good
IE_SH_26A030400	ANADERRYBOY_020	River	Good	Good	Moderate
IE_SH_26_590	Cloonacolly	Lake	Unassigned	Unassigned	Unassigned
IE_SH_26_697	Cloonagh	Lake	Unassigned	Unassigned	Unassigned
IE_SH_26C270690	Cummer (Mayo)_010	River	Unassigned	Unassigned	Unassigned
IE_SH_26_702	Errit	Lake	Unassigned	Unassigned	Unassigned
IE_SH_26_661	Glinn	Lake	Moderate	Moderate	Moderate
IE_SH_26K060700	KILTACLARE STREAM_010	River	Good	Good	Good
IE_SH_26L100900	LISSYDALY STREAM_010	River	Good	Good	Good
IE_SH_26L030100	LUNG_010	River	High	Good	Good
IE_SH_26L030200	LUNG_020	River	Unassigned	Unassigned	Good
IE_SH_26_580	Nanoge	Lake	Moderate	Unassigned	Unassigned
IE_SH_26_630	Roe	Lake	Unassigned	Unassigned	Unassigned
IE_SH_26_689	Urlaur	Lake	Unassigned	Bad	Bad

Potentially Dependent Transitional and Coastal Waterbodies

The Transitional and Coastal waterbodies listed below intersect spatially with river and lake waterbodies in the subcatchment ...

Code	Name	Type	Local Authority	WFD Risk
------	------	------	-----------------	----------

Potentially Dependent Groundwater Waterbodies

The groundwaters listed below intersect spatially with river and lake waterbodies in the subcatchment ...

Code	Name	Type	Local Authority	WFD Risk
IE_SH_G_048	Carrick on Shannon	Groundwater	Roscommon County Council	At risk
IE_SH_G_073	Curlew Mountains	Groundwater	Sligo County Council	Review
IE_SH_G_224	Suck North	Groundwater	Roscommon County Council	Not at risk
IE_WE_G_0032	Kilkelly Charlestown	Groundwater	Mayo County Council	Not at risk
IE_WE_G_0033	Swinford	Groundwater	Mayo County Council	Not at risk
IE_WE_G_0063	Corrib Gravels	Groundwater	Mayo County Council	Not at risk
IE_WE_G_0112	Gweestion-Moy Gravels Group 1	Groundwater	Mayo County Council	Not at risk

Protected Areas intersecting River and Lake Waterbodies

The Protected Areas listed below intersect spatially with river and lake waterbodies in the subcatchment ...

Code	Name	Type	Waterbody Name	Association Type
IE0000604	Derrinea Bog SAC	SAC	ANADERRYBOY_020	Overlapping / partly within Protected Area
IE0000604	Derrinea Bog SAC	SAC	Cloonagh	Overlapping / partly within Protected Area
IEPA1_SH_26_702	Errit	Drinking Water	Errit	Within Protected Area
IEPA1_SH_26C270 690	CUMMER_26_010	Drinking Water	Cummer (Mayo)_010	Within Protected Area

Pressures

Below is a list of all significant pressures identified in the subcatchment.

Code	Name	WFD Risk	Pressure Category	Pressure Sub Category
IE_SH_26_661	Glinn	At risk	Hydromorphology	Dams, barriers, locks, weirs
IE_SH_26_689	Urlaur	At risk	Invasive Species	Invasive species
IE_SH_26A030400	ANADERRYBOY_020	At risk	Extractive Industry	Peat
IE_SH_26A030400	ANADERRYBOY_020	At risk	Hydromorphology	Channelisation
IE_SH_G_048	Carrick on Shannon	At risk	Agriculture	Agriculture
IE_SH_26_697	Cloonagh	Review	Hydromorphology	Land Drainage
IE_SH_26_697	Cloonagh	Review	Extractive Industry	Peat
IE_SH_G_073	Curlew Mountains	Review	Anthropogenic Pressures	Unknown

Further Characterisation Actions

The following further characterisation actions have been identified. These are necessary to help understand more fully issues in the subcatchment and their likely cause.

Code	Name	Action	Responsible Organisation
IE_SH_26_590	Cloonacolly	IA1 Provision of Information	Environmental Protection Agency
IE_SH_26_661	Glinn	IA1 Provision of Information	Environmental Protection Agency
IE_SH_26_580	Nanoge	IA3 Determination of Water Quality (unassigned waterbody)	Mayo County Council
IE_SH_26_630	Roe	IA1 Provision of Information	Environmental Protection Agency
IE_SH_26_689	Urlaur	IA1 Provision of Information	Inland Fisheries Ireland
IE_SH_26A030400	ANADERRYBOY_020	IA1 Provision of Information	Environmental Protection Agency
IE_SH_26_697	Cloonagh	IA1 Provision of Information	Mayo County Council
IE_SH_26A030400	ANADERRYBOY_020	IA7 Multiple Sources in Multiple Areas	Mayo County Council
IE_SH_26_697	Cloonagh	IA1 Provision of Information	Environmental Protection Agency
IE_SH_26_630	Roe	IA3 Determination of Water Quality (unassigned waterbody)	Mayo County Council
IE_SH_26_590	Cloonacolly	IA3 Determination of Water Quality (unassigned waterbody)	Roscommon County Council
IE_SH_26C270690	Cummer (Mayo)_010	IA3 Determination of Water Quality (unassigned waterbody)	Mayo County Council
IE_SH_26_580	Nanoge	IA1 Provision of Information	Environmental Protection Agency
IE_SH_26_689	Urlaur	IA9 Lake pressures	Mayo County Council