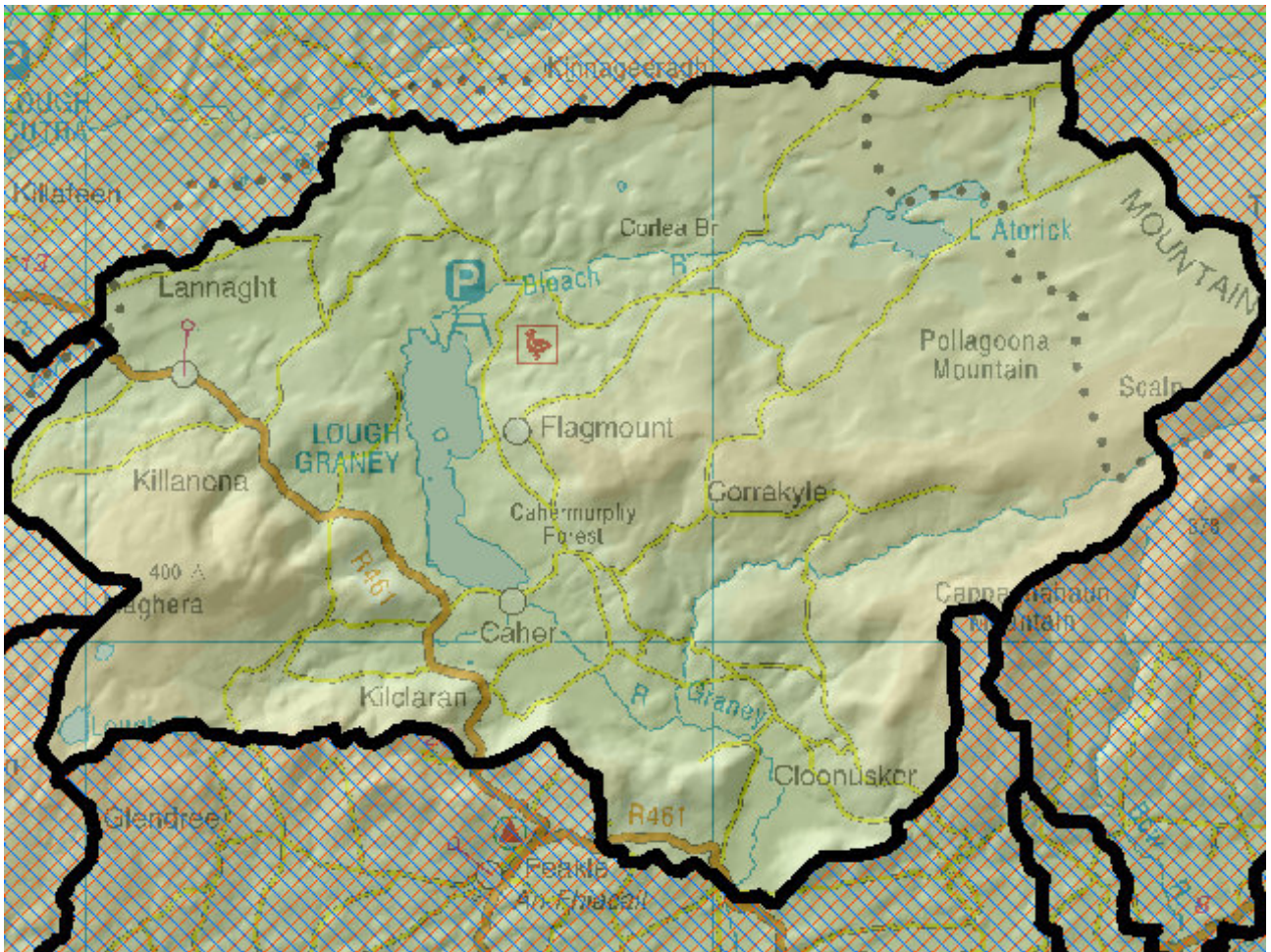


# WFD Cycle 2

Catchment Lower Shannon

Subcatchment Graney[Shannon]\_SC\_020

Code 25C\_8



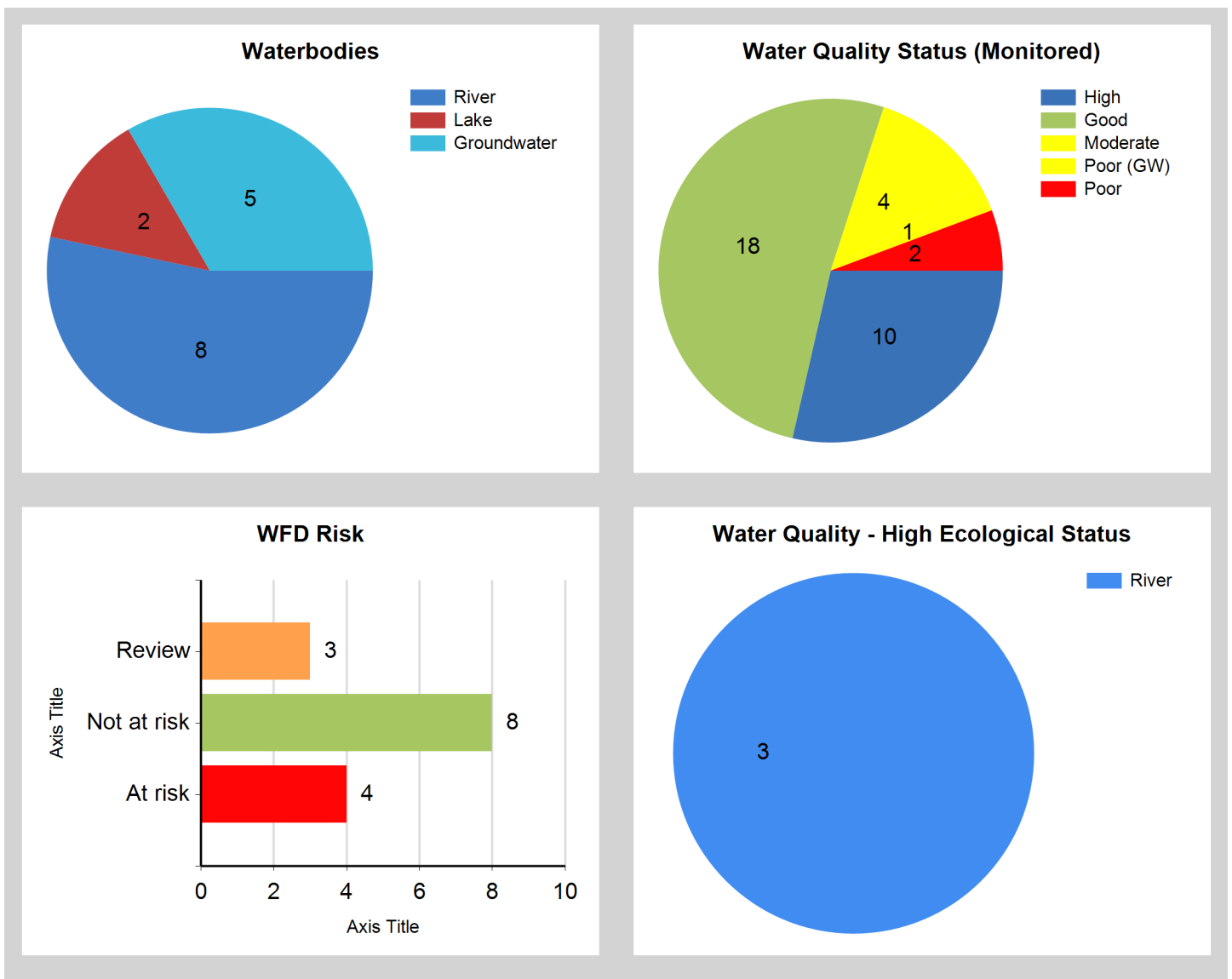
© Ordnance Survey Ireland. All rights reserved. Licence Number EN 0059208

Generated on: 11 Jan 2019

## Assessment Purpose

This assessment has been produced as part of the national characterisation programme undertaken for the second cycle of Water Framework Directive river basin management planning. It has been led by the EPA, with input from Local Authorities and other public bodies, and with support from RPS consultants.

The characterisation assessments are automatically generated from the information stored in the WFD Application. They are based on information available to the end of 2015 but may be subject to change until the final 2018-21 river basin management plan is published. Users should ensure that they have the most up to date information by downloading the latest assessment before use.



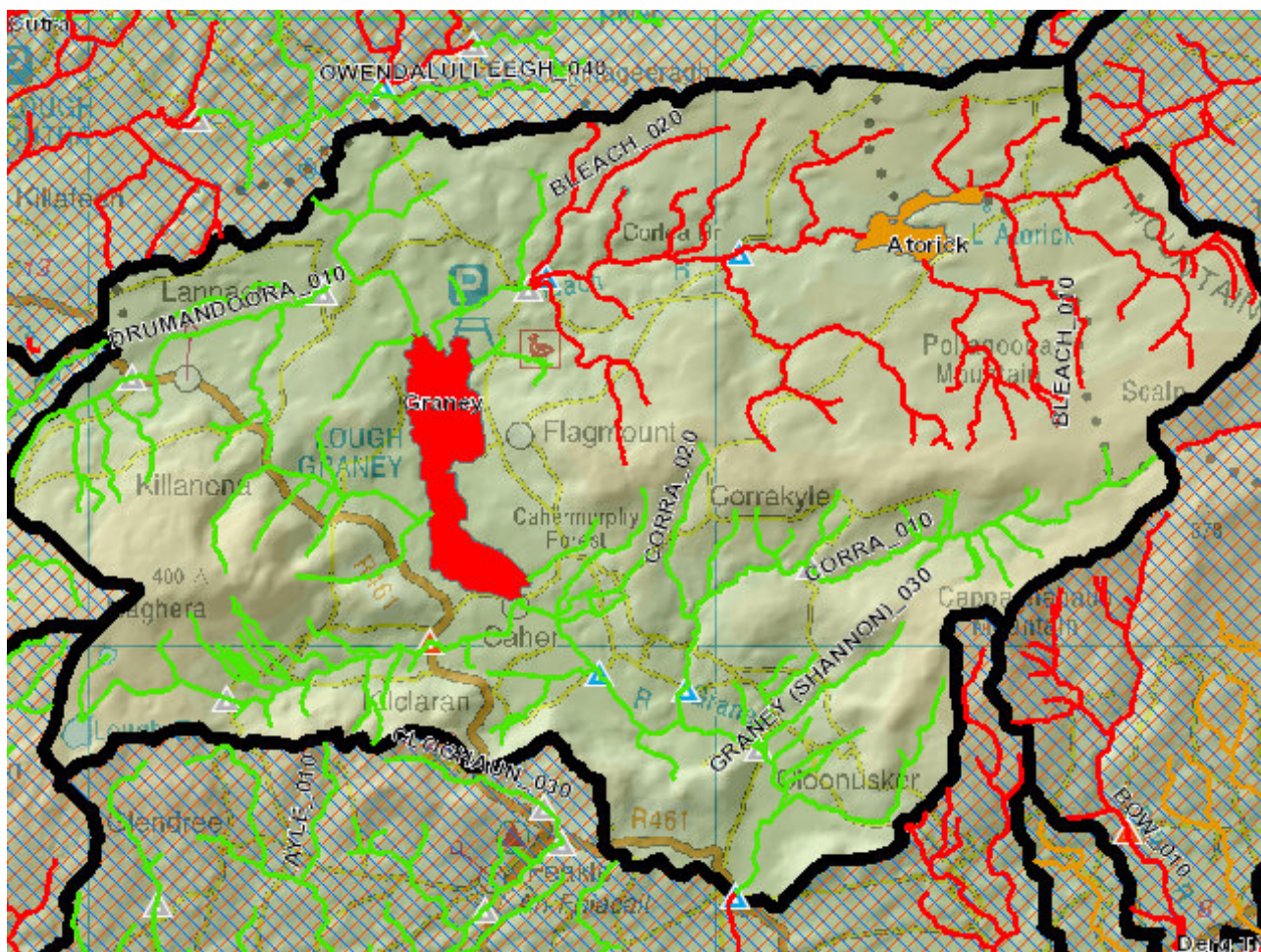
## Evaluation of Priority Subcatchment Issues

Biological status declined from Good to Poor in the Bleach\_010 river and from High to Moderate in the Bleach\_020 river. The significant issue may be forestry in both rivers. Further investigation of forestry practices and determination of possible measures is needed. In addition the Bleach\_020 river has a high status objective which it is currently failing to achieve.

Lake Atorick is an unassigned lake in the Bleach\_010 subbasin, water samples will be collected from the lake to determine water quality.

Lough Graney is At Risk due to Moderate ecological status. An investigative assessment into possible nutrient sources from forestry and agriculture will be undertaken.

## Map Subcatchment Risk Map

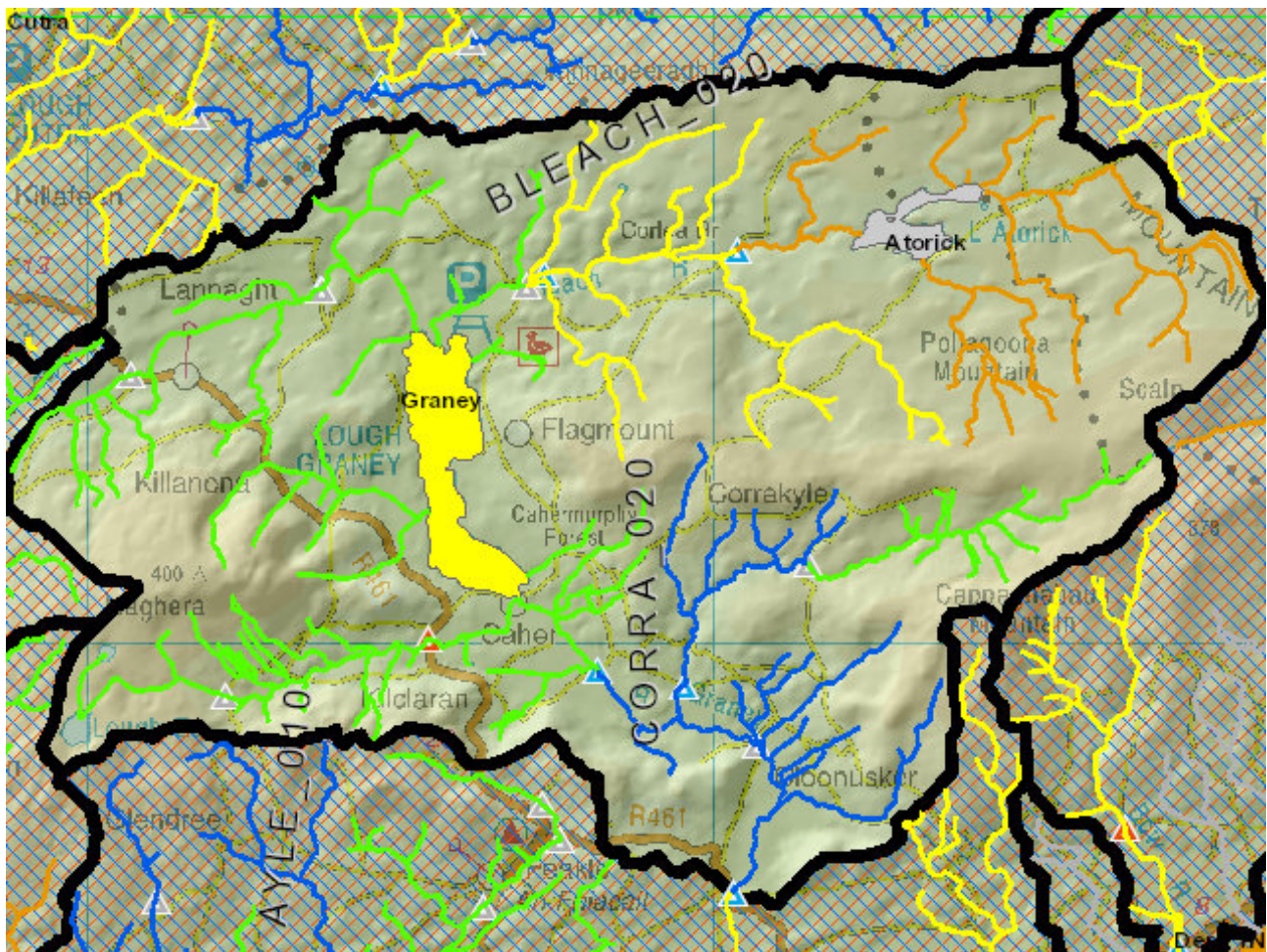


## River And Lake Waterbodies: WFD Risk

The following river and lake waterbodies are in the subcatchment.

Code	Name	Type	WFD Risk	Significant Pressure
IE_SH_25_190	Graney	Lake	At risk	Yes
IE_SH_25B070100	BLEACH_010	River	At risk	Yes
IE_SH_25B070200	BLEACH_020	River	At risk	Yes
IE_SH_25_172	Atorick	Lake	Review	Yes

## Map Subcatchment Water Quality Status Map



## River And Lake Waterbodies: Water Quality Status

The water quality status of river and lake waterbodies in the subcatchment is as follows.

Code	Name	Type	2007-09	2010-12	2010-15
IE_SH_25_172	Atorick	Lake	Unassigned	Unassigned	Unassigned
IE_SH_25B070100	BLEACH_010	River	Unassigned	Good	Poor
IE_SH_25B070200	BLEACH_020	River	High	High	Moderate
IE_SH_25C090100	CORRA_010	River	Unassigned	Poor	Good
IE_SH_25C090400	CORRA_020	River	High	High	High
IE_SH_25D060500	DRUMANDOORA_010	River	High	Good	Good
IE_SH_25_190	Graney	Lake	Moderate	Moderate	Moderate
IE_SH_25G040025	GRANEY (SHANNON)_010	River	Good	Good	Good
IE_SH_25G040100	GRANEY (SHANNON)_020	River	High	Good	Good
IE_SH_25G040200	GRANEY (SHANNON)_030	River	High	High	High

## Potentially Dependent Transitional and Coastal Waterbodies

The Transitional and Coastal waterbodies listed below intersect spatially with river and lake waterbodies in the subcatchment ...

Code	Name	Type	Local Authority	WFD Risk
------	------	------	-----------------	----------

## Potentially Dependent Groundwater Waterbodies

The groundwaters listed below intersect spatially with river and lake waterbodies in the subcatchment ...

Code	Name	Type	Local Authority	WFD Risk
IE_SH_G_071	Crusheen	Groundwater	Clare County Council	Review
IE_SH_G_157	Lough Graney	Groundwater	Clare County Council	Not at risk
IE_SH_G_229	Tulla-Newmarket on Fergus	Groundwater	Clare County Council	Review
IE_SH_G_236	Tynagh	Groundwater	Galway County Council	Not at risk
IE_WE_G_0091	GWDTE-Caherglassaun Turlough (SAC000238)	Groundwater	Galway County Council	At risk

## Protected Areas intersecting River and Lake Waterbodies

The Protected Areas listed below intersect spatially with river and lake waterbodies in the subcatchment ...

Code	Name	Type	Waterbody Name	Association Type
IEPA1_SH_25G040100	GRANEY (SHANNON)_020	Drinking Water	GRANEY (SHANNON)_020	Within Protected Area

## Pressures

Below is a list of all significant pressures identified in the subcatchment.

Code	Name	WFD Risk	Pressure Category	Pressure Sub Category
IE_SH_25_190	Graney	At risk	Agriculture	Pasture
IE_SH_25_190	Graney	At risk	Forestry	Forestry
IE_SH_25_190	Graney	At risk	Invasive Species	Invasive species
IE_SH_25B070100	BLEACH_010	At risk	Forestry	Forestry
IE_SH_25B070200	BLEACH_020	At risk	Forestry	Forestry
IE_WE_G_0091	GWDTE-Caherglassaun Turlough (SAC000238)	At risk	Forestry	Forestry
IE_SH_25_172	Atorick	Review	Forestry	Forestry
IE_SH_G_071	Crusheen	Review	Anthropogenic Pressures	Unknown
IE_SH_G_229	Tulla-Newmarket on Fergus	Review	Anthropogenic Pressures	Unknown

## Further Characterisation Actions

The following further characterisation actions have been identified. These are necessary to help understand more fully issues in the subcatchment and their likely cause.

Code	Name	Action	Responsible Organisation
IE_SH_25B070100	BLEACH_010	IA1 Provision of Information	Environmental Protection Agency
IE_SH_25B070200	BLEACH_020	IA8 High status RWB pressures	Clare County Council
IE_SH_25_190	Graney	IA9 Lake pressures	Clare County Council
IE_SH_25B070100	BLEACH_010	IA1 Provision of Information	Environmental Protection Agency
IE_SH_25_172	Atorick	IA3 Determination of Water Quality (unassigned waterbody)	Clare County Council