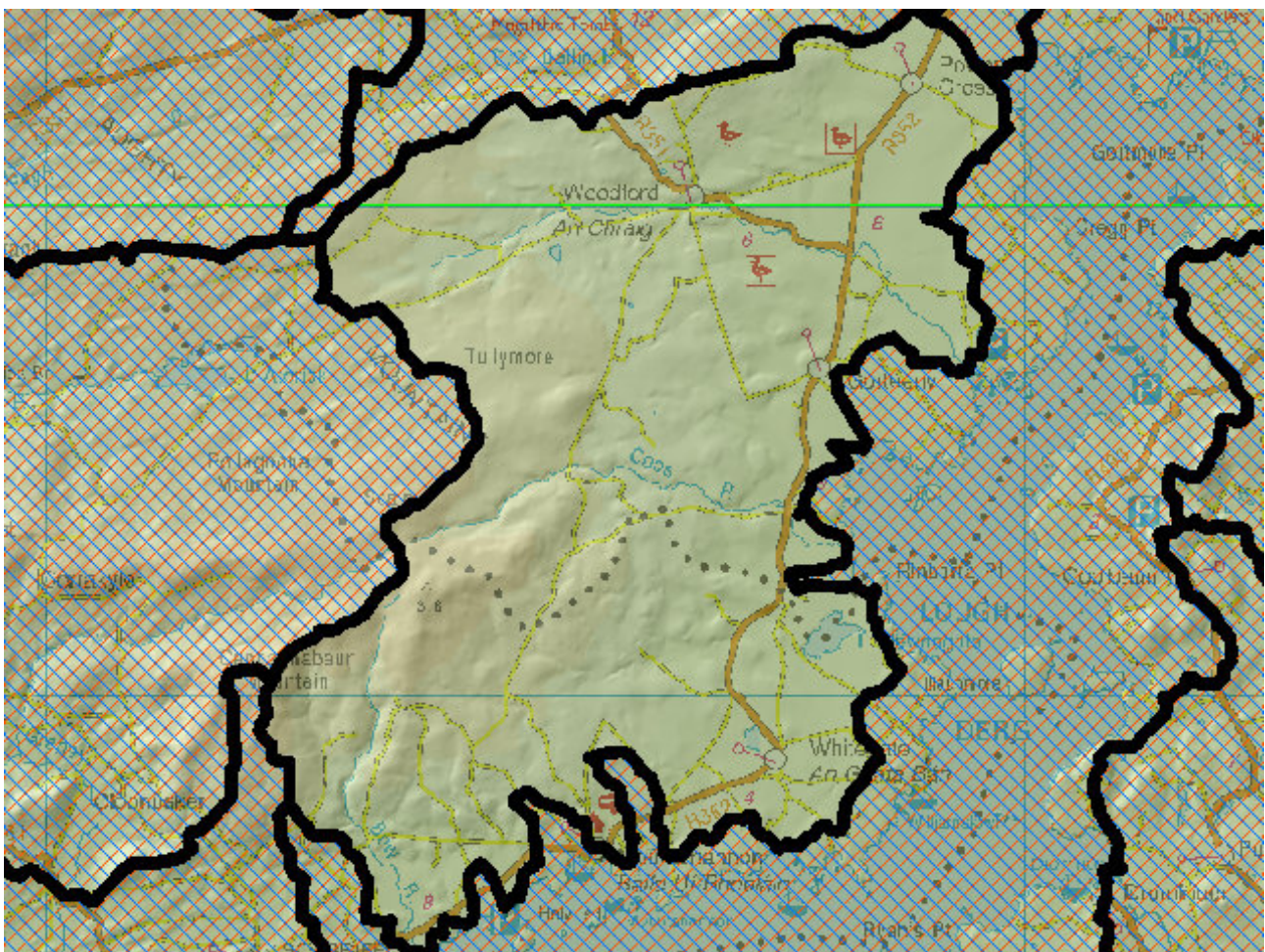


WFD Cycle 2

Catchment Lower Shannon

Subcatchment Bow_SC_010

Code 25C_7



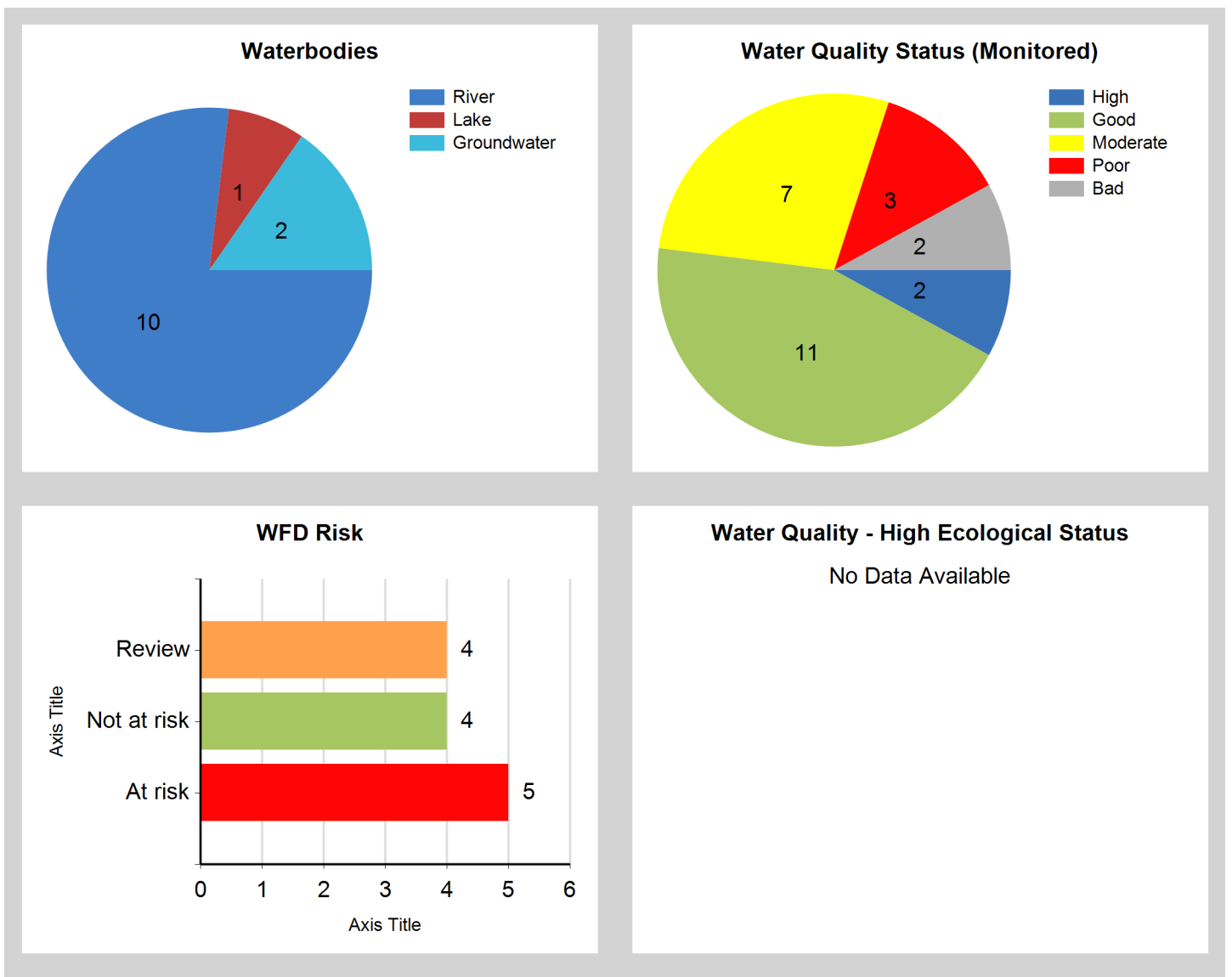
© Ordnance Survey Ireland. All rights reserved. Licence Number EN 0059208

Generated on: 13 Dec 2018

Assessment Purpose

This assessment has been produced as part of the national characterisation programme undertaken for the second cycle of Water Framework Directive river basin management planning. It has been led by the EPA, with input from Local Authorities and other public bodies, and with support from RPS consultants.

The characterisation assessments are automatically generated from the information stored in the WFD Application. They are based on information available to the end of 2015 but may be subject to change until the final 2018-21 river basin management plan is published. Users should ensure that they have the most up to date information by downloading the latest assessment before use.



Evaluation of Priority Subcatchment Issues

Woodford_010, 020, Coos_010, Bow_010 and Lough Alewnaghta are AT RISK.

Siltation from forestry is possibly the significant pressure within the Woodford_010 river, while nutrients from urban waste water may be the significant issue on the Woodford_020 river. Nutrients from pasture may be the significant pressure on the Coos_010 river. Investigative assessments to identify critical source areas will be completed on all three rivers.

Zebra mussels are present in Lough Alewnaghta possibly affecting both the ecology and nutrient dynamics. Overall biological status in the lake is Bad, driven by fish status, while plants are indicating Moderate status. Clare County Council will complete an investigative assessment to identify nutrient sources in the south. Inland Fisheries Ireland (IFI) will advise what is driving fish status and what measures, if any, can be introduced to improve status.

Fish are driving biological status to Moderate on Bow_010. IFI reported that unplanned land drainage may have affected fish status. The EPA has been assigned a watching brief to monitor for improvement in status following the implementation of measures.

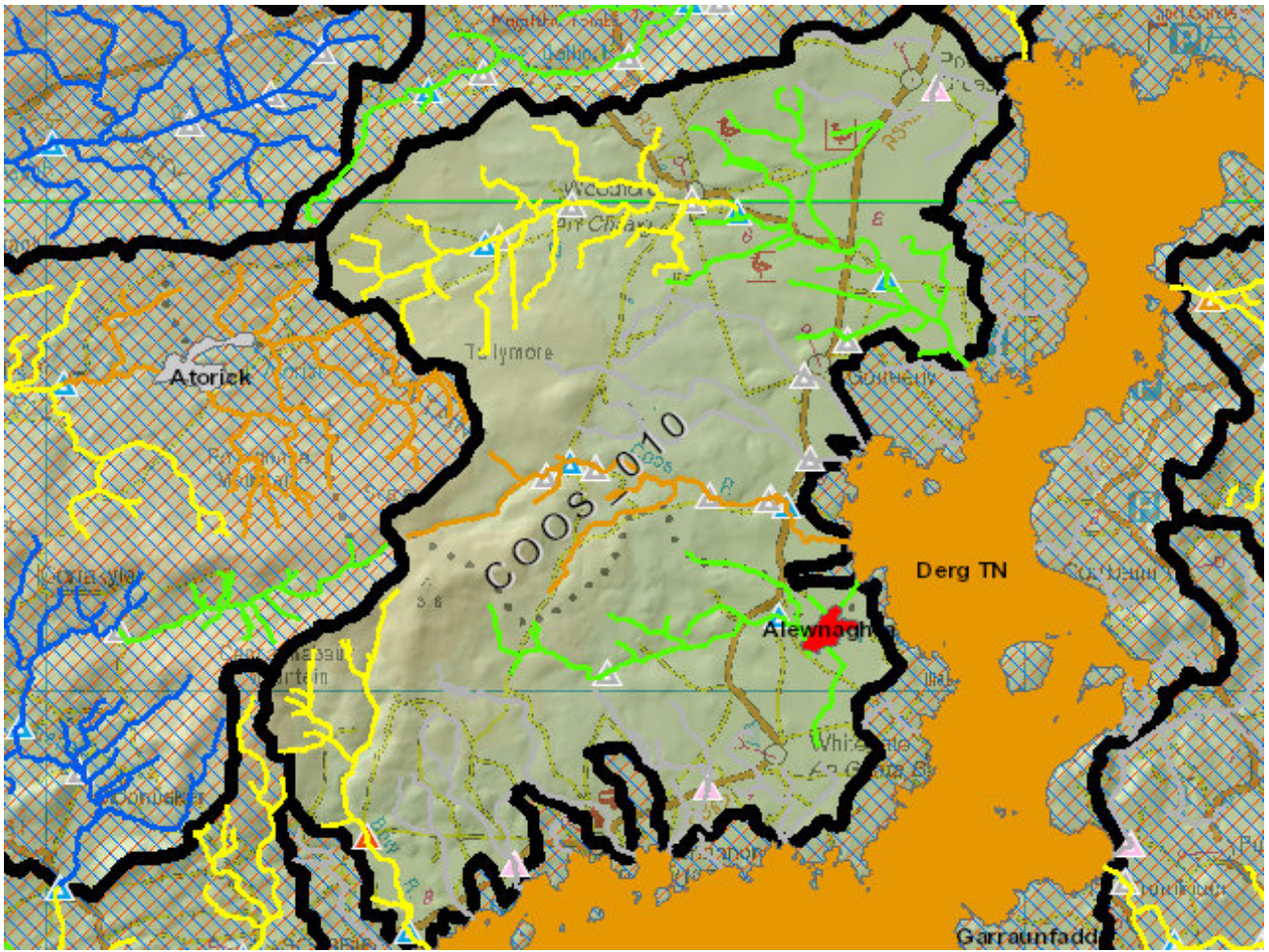
The Moannakeeba_East_010, Lower Village Trib_010, South Boleynagoagh_010 and Kilrateera Upper_010 rivers are under REVIEW as they are unassigned. Agriculture, forestry, domestic waste water systems and extractive industry (peat) are among the potential significant pressures in these rivers.

River And Lake Waterbodies: WFD Risk

The following river and lake waterbodies are in the subcatchment.

Code	Name	Type	WFD Risk	Significant Pressure
IE_SH_25_189	Alewnaghta	Lake	At risk	Yes
IE_SH_25B100200	BOW_010	River	At risk	Yes
IE_SH_25C080200	COOS_010	River	At risk	Yes
IE_SH_25W010040	WOODFORD (GALWAY)_010	River	At risk	Yes
IE_SH_25W010200	WOODFORD (GALWAY)_020	River	At risk	Yes
IE_SH_25K720870	KILRATEERA_UPPER_0 10	River	Review	Yes
IE_SH_25L080081	LOWER VILLAGE TRIB_010	River	Review	Yes
IE_SH_25M290660	MOANNAKEEBA_EAST_ 010	River	Review	Yes
IE_SH_25S690670	South Boleynagoagh_010	River	Review	Yes
IE_SH_25D100200	DERRAINY_010	River	Not at risk	No
IE_SH_25W010300	WOODFORD (GALWAY)_030	River	Not at risk	No

Map Subcatchment Water Quality Status Map



River And Lake Waterbodies: Water Quality Status

The water quality status of river and lake waterbodies in the subcatchment is as follows.

Code	Name	Type	2007-09	2010-12	2010-15
IE_SH_25_189	Alewnaghta	Lake	Poor	Bad	Bad
IE_SH_25B100200	BOW_010	River	Good	Moderate	Moderate
IE_SH_25C080200	COOS_010	River	Good	Good	Poor
IE_SH_25D100200	DERRAINY_010	River	High	Moderate	Good
IE_SH_25K720870	KILRATEERA_UPPER_010	River	Unassigned	Unassigned	Unassigned
IE_SH_25L080081	LOWER VILLAGE TRIB_010	River	Unassigned	Unassigned	Unassigned
IE_SH_25M290660	MOANNAKEEBA_EAST_010	River	Unassigned	Unassigned	Unassigned
IE_SH_25S690670	South Boleynagoagh_010	River	Unassigned	Unassigned	Unassigned
IE_SH_25W010040	WOODFORD (GALWAY)_010	River	Moderate	Poor	Moderate
IE_SH_25W010200	WOODFORD (GALWAY)_020	River	Good	Moderate	Moderate
IE_SH_25W010300	WOODFORD (GALWAY)_030	River	High	Good	Good

Potentially Dependent Transitional and Coastal Waterbodies

The Transitional and Coastal waterbodies listed below intersect spatially with river and lake waterbodies in the subcatchment ...

Code	Name	Type	Local Authority	WFD Risk
------	------	------	-----------------	----------

Potentially Dependent Groundwater Waterbodies

The groundwaters listed below intersect spatially with river and lake waterbodies in the subcatchment ...

Code	Name	Type	Local Authority	WFD Risk
IE_SH_G_157	Lough Graney	Groundwater	Clare County Council	Not at risk
IE_SH_G_236	Tynagh	Groundwater	Galway County Council	Not at risk

Protected Areas intersecting River and Lake Waterbodies

The Protected Areas listed below intersect spatially with river and lake waterbodies in the subcatchment ...

Code	Name	Type	Waterbody Name	Association Type
------	------	------	----------------	------------------

Pressures

Below is a list of all significant pressures identified in the subcatchment.

Code	Name	WFD Risk	Pressure Category	Pressure Sub Category
IE_SH_25_189	Alewnaghta	At risk	Agriculture	Agriculture
IE_SH_25_189	Alewnaghta	At risk	Invasive Species	Invasive species
IE_SH_25B100200	BOW_010	At risk	Hydromorphology	Land Drainage
IE_SH_25C080200	COOS_010	At risk	Agriculture	Pasture
IE_SH_25W010040	WOODFORD (GALWAY)_010	At risk	Forestry	Forestry
IE_SH_25W010200	WOODFORD (GALWAY)_020	At risk	Urban Waste Water	Agglomeration PE < 500
IE_SH_25K720870	KILRATEERA_UPPER_010	Review	Forestry	Forestry
IE_SH_25K720870	KILRATEERA_UPPER_010	Review	Agriculture	Pasture
IE_SH_25L080081	LOWER VILLAGE TRIB_010	Review	Agriculture	Pasture
IE_SH_25L080081	LOWER VILLAGE TRIB_010	Review	Forestry	Forestry
IE_SH_25L080081	LOWER VILLAGE TRIB_010	Review	Domestic Waste Water	Waste Water discharge
IE_SH_25M290660	MOANNAKEEBA_EAST_010	Review	Extractive Industry	Peat
IE_SH_25M290660	MOANNAKEEBA_EAST_010	Review	Domestic Waste Water	Waste Water discharge
IE_SH_25M290660	MOANNAKEEBA_EAST_010	Review	Forestry	Forestry
IE_SH_25M290660	MOANNAKEEBA_EAST_010	Review	Agriculture	Pasture
IE_SH_25S690670	South Boleynagoagh_010	Review	Forestry	Forestry
IE_SH_25S690670	South Boleynagoagh_010	Review	Agriculture	Pasture

Further Characterisation Actions

The following further characterisation actions have been identified. These are necessary to help understand more fully issues in the subcatchment and their likely cause.

Code	Name	Action	Responsible Organisation
IE_SH_25C080200	COOS_010	IA7 Multiple Sources in Multiple Areas	Galway County Council
IE_SH_25K720870	KILRATEERA_UPPER_010	IA3 Determination of Water Quality (unassigned waterbody)	Clare County Council
IE_SH_25B100200	BOW_010	IA1 Provision of Information	Inland Fisheries Ireland
IE_SH_25L080081	LOWER VILLAGE TRIB_010	IA3 Determination of Water Quality (unassigned waterbody)	Galway County Council
IE_SH_25B100200	BOW_010	IA1 Provision of Information	Environmental Protection Agency
IE_SH_25W010040	WOODFORD (GALWAY)_010	IA7 Multiple Sources in Multiple Areas	Galway County Council
IE_SH_25W010200	WOODFORD (GALWAY)_020	IA1 Provision of Information	Irish Water
IE_SH_25_189	Alewnaghta	IA9 Lake pressures	Clare County Council
IE_SH_25S690670	South Boleynagoagh_010	IA3 Determination of Water Quality (unassigned waterbody)	Clare County Council
IE_SH_25W010040	WOODFORD (GALWAY)_010	IA1 Provision of Information	Environmental Protection Agency
IE_SH_25M290660	MOANNAKEEBA_EAST_010	IA3 Determination of Water Quality (unassigned waterbody)	Galway County Council
IE_SH_25_189	Alewnaghta	IA1 Provision of Information	Inland Fisheries Ireland