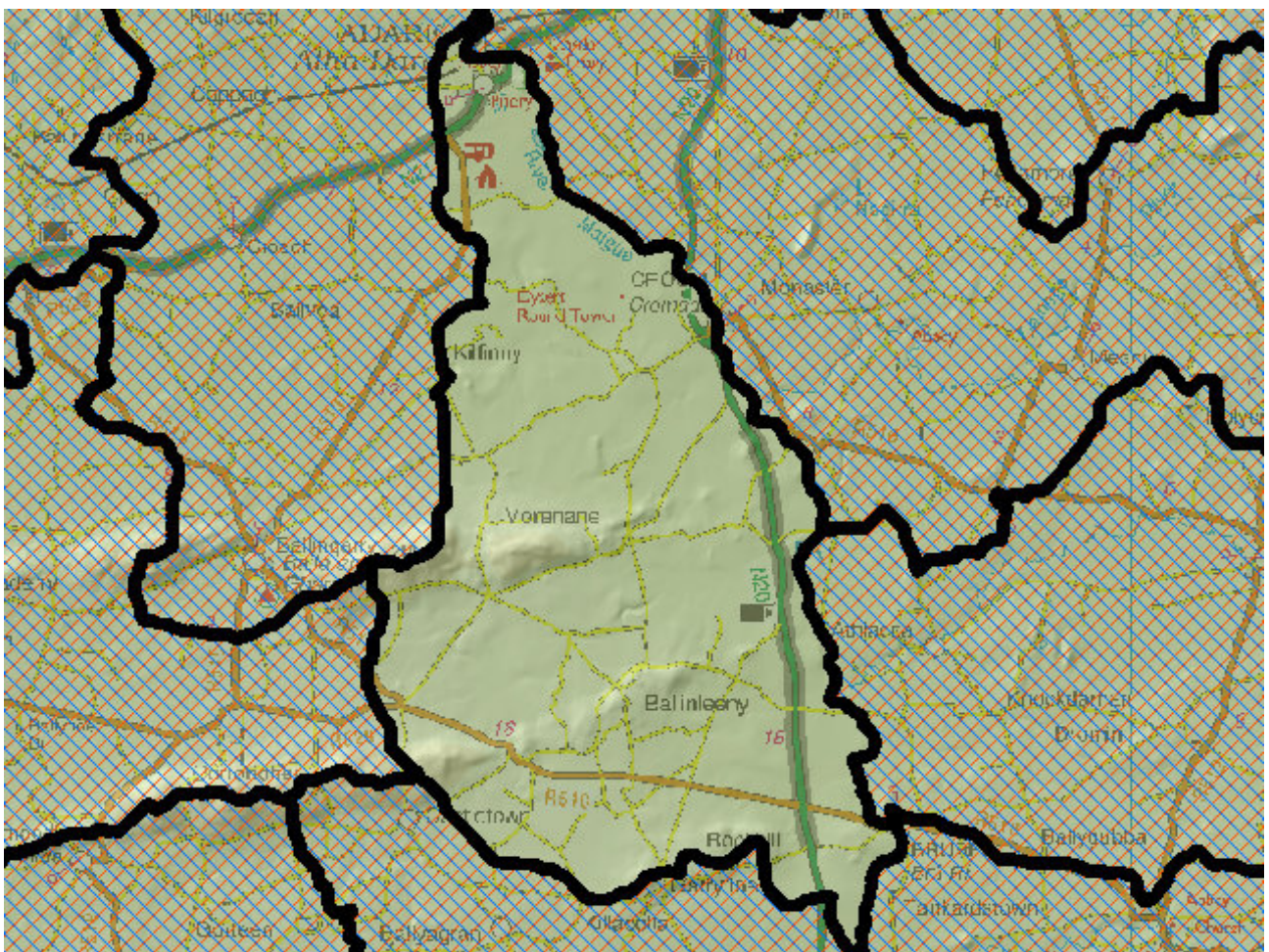


WFD Cycle 2

Catchment Shannon Estuary South

Subcatchment Maigne_SC_040

Code 24_8



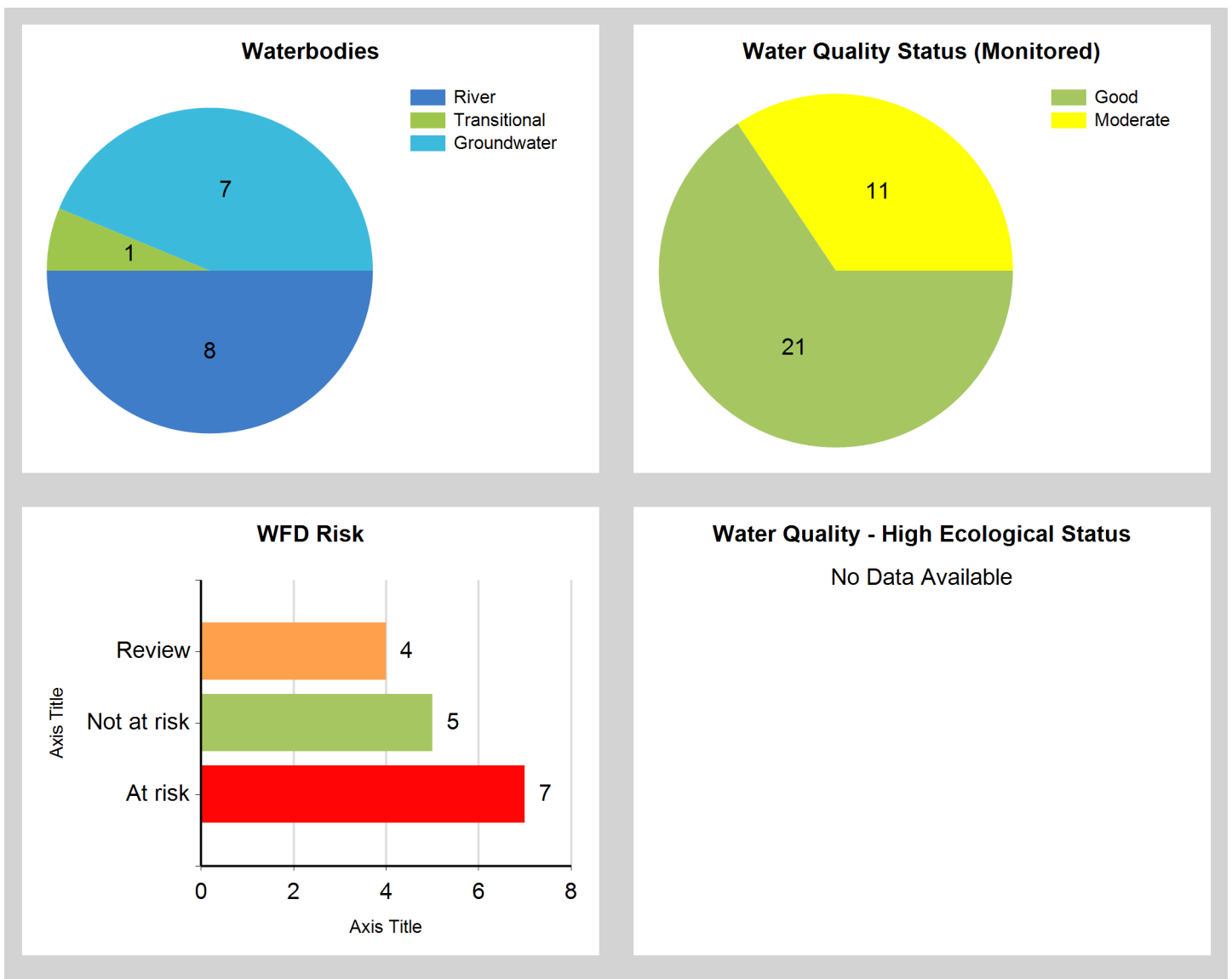
© Ordnance Survey Ireland. All rights reserved. Licence Number EN 0059208

Generated on: 10 Jan 2019

Assessment Purpose

This assessment has been produced as part of the national characterisation programme undertaken for the second cycle of Water Framework Directive river basin management planning. It has been led by the EPA, with input from Local Authorities and other public bodies, and with support from RPS consultants.

The characterisation assessments are automatically generated from the information stored in the WFD Application. They are based on information available to the end of 2015 but may be subject to change until the final 2018-21 river basin management plan is published. Users should ensure that they have the most up to date information by downloading the latest assessment before use.



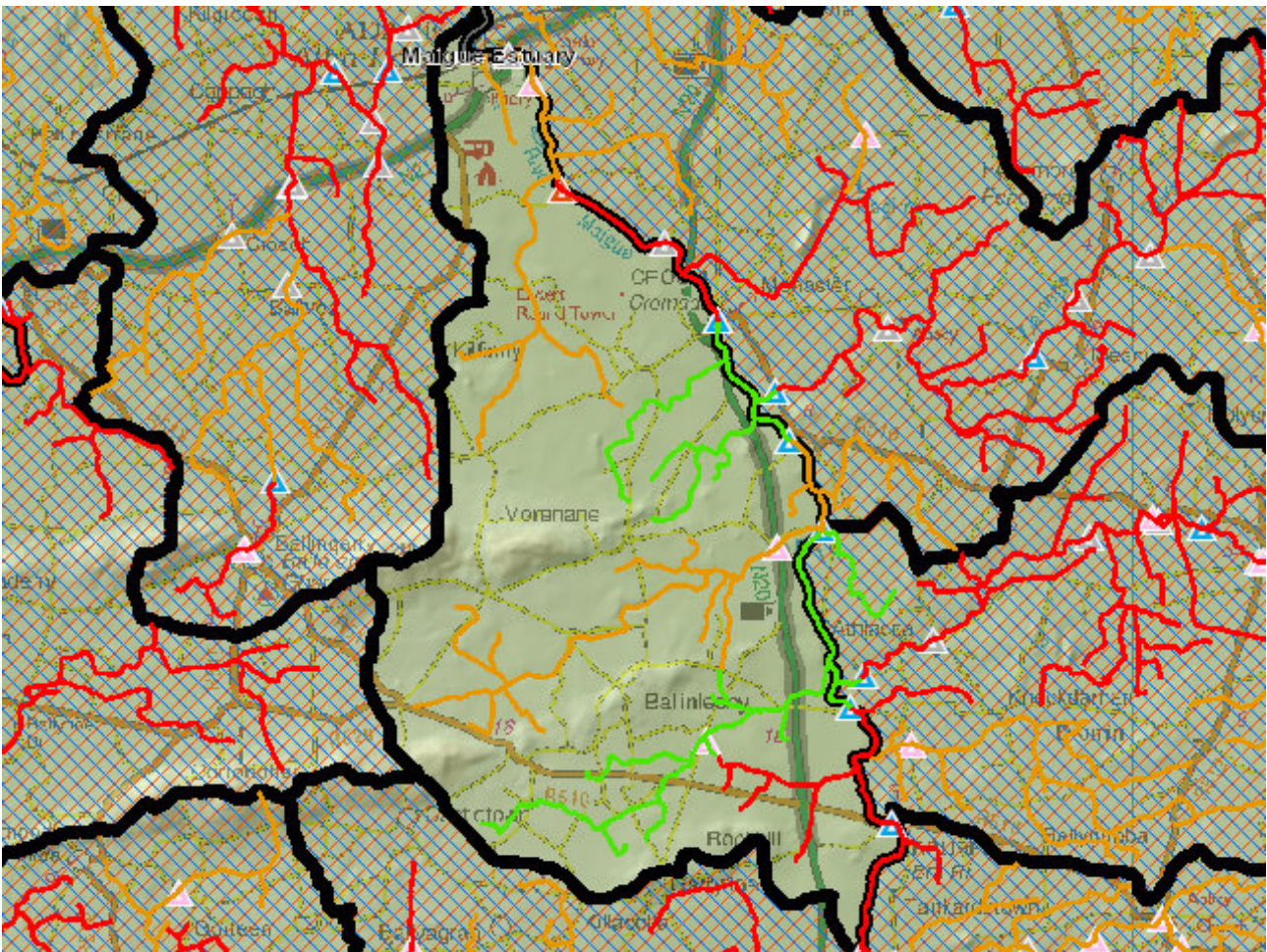
Evaluation of Priority Subcatchment Issues

Seven of the eight river water bodies in this subcatchment are part of the Maigne main channel (Maigne_030 to Maigne_090). This main channel is shared with three adjacent subcatchments on the eastern side: 24_11, 24_13 and 24_17. The Maigne_050 and Maigne_070 water bodies are considered to be NOT AT RISK.

The West Liskennett_010 and Maigne_090 water bodies were revised to REVIEW based on the presence of a number of point pressures, and high concentrations of P in the upstream/downstream water bodies, respectively. Maigne_060 is also under REVIEW due to its unassigned status.

Three of the Maigne water bodies are AT RISK: Maigne_030, Maigne_040, and Maigne_080. Ecological status is Moderate for all three. Phosphate enrichment a priority issue throughout the subcatchment and agricultural activities represent the likely significant pressure requiring further investigative assessment. Urban wastewater discharge from multiple plants is possibly a pressure for Maigne_080 also. Moderate fish status is also noted for the Maigne_080, likely driven by hydromorphological issues such as channelisation and the presence of a weir possibly affecting migration. There is evidence of excess fine sediment in the lower reaches in Maigne_070 and Maigne_080 which may be related to hydromorphological pressures from the Maigne Drainage Scheme.

Map Subcatchment Risk Map

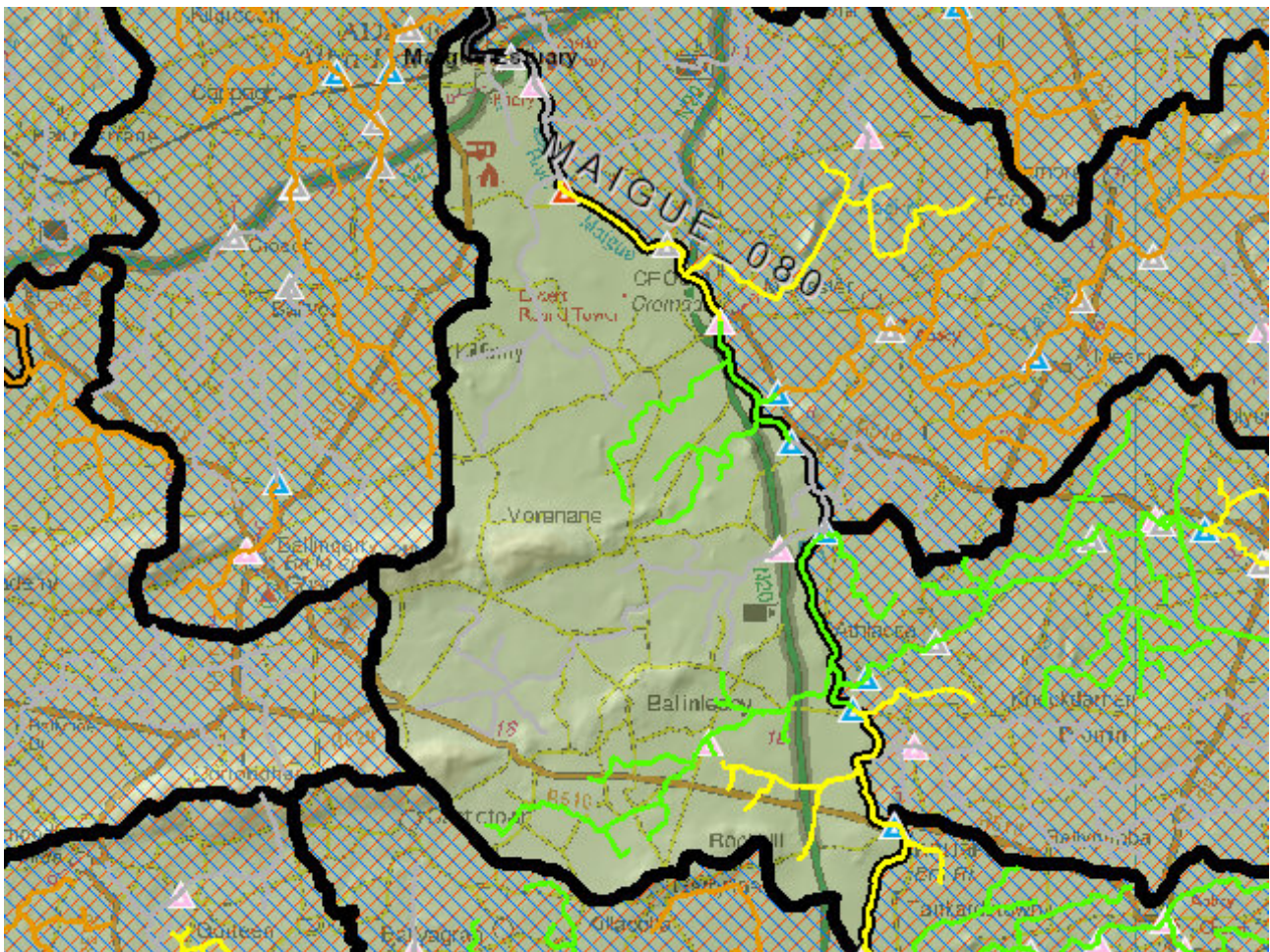


River And Lake Waterbodies: WFD Risk

The following river and lake waterbodies are in the subcatchment.

Code	Name	Type	WFD Risk	Significant Pressure
IE_SH_24M010300	MAIGUE_030	River	At risk	Yes
IE_SH_24M010400	MAIGUE_040	River	At risk	Yes
IE_SH_24M010900	MAIGUE_080	River	At risk	Yes
IE_SH_24M010600	MAIGUE_060	River	Review	Yes
IE_SH_24M010980	MAIGUE_090	River	Review	Yes
IE_SH_24W060910	West Liskennett_010	River	Review	Yes
IE_SH_24M010500	MAIGUE_050	River	Not at risk	Yes
IE_SH_24M010700	MAIGUE_070	River	Not at risk	Yes

Map Subcatchment Water Quality Status Map



River And Lake Waterbodies: Water Quality Status

The water quality status of river and lake waterbodies in the subcatchment is as follows.

Code	Name	Type	2007-09	2010-12	2010-15
IE_SH_24M010300	MAIGUE_030	River	Moderate	Moderate	Moderate
IE_SH_24M010400	MAIGUE_040	River	Moderate	Good	Moderate
IE_SH_24M010500	MAIGUE_050	River	Good	Good	Good
IE_SH_24M010600	MAIGUE_060	River	Unassigned	Unassigned	Unassigned
IE_SH_24M010700	MAIGUE_070	River	Good	Good	Good
IE_SH_24M010900	MAIGUE_080	River	Moderate	Moderate	Moderate
IE_SH_24M010980	MAIGUE_090	River	Unassigned	Unassigned	Unassigned
IE_SH_24W060910	West Liskennett_010	River	Unassigned	Unassigned	Unassigned

Potentially Dependent Transitional and Coastal Waterbodies

The Transitional and Coastal waterbodies listed below intersect spatially with river and lake waterbodies in the subcatchment ...

Code	Name	Type	Local Authority	WFD Risk
IE_SH_060_0700	Maigue Estuary	Transitional	Limerick City & County Council	At risk

Potentially Dependent Groundwater Waterbodies

The groundwaters listed below intersect spatially with river and lake waterbodies in the subcatchment ...

Code	Name	Type	Local Authority	WFD Risk
IE_SH_G_022	Ballinarry	Groundwater	Limerick City & County Council	At risk
IE_SH_G_046	Bruree	Groundwater	Limerick City & County Council	At risk
IE_SH_G_084	Fedamore	Groundwater	Limerick City & County Council	Review
IE_SH_G_088	Feenagh	Groundwater	Limerick City & County Council	Not at risk
IE_SH_G_107	Hospital	Groundwater	Limerick City & County Council	Not at risk
IE_SH_G_122	Kilmeedy	Groundwater	Limerick City & County Council	At risk
IE_SH_G_197	Patrickswell	Groundwater	Limerick City & County Council	Not at risk

Protected Areas intersecting River and Lake Waterbodies

The Protected Areas listed below intersect spatially with river and lake waterbodies in the subcatchment ...

Code	Name	Type	Waterbody Name	Association Type
IE0002165	Lower River Shannon SAC	SAC	MAIGUE_090	Overlapping / partly within Protected Area
IEPA1_SH_24M010900	MAIGUE_080	Drinking Water	MAIGUE_080	Within Protected Area

Pressures

Below is a list of all significant pressures identified in the subcatchment.

Code	Name	WFD Risk	Pressure Category	Pressure Sub Category
IE_SH_060_0700	Maigue Estuary	At risk	Agriculture	Agriculture
IE_SH_24M010300	MAIGUE_030	At risk	Agriculture	Pasture
IE_SH_24M010400	MAIGUE_040	At risk	Agriculture	Pasture
IE_SH_24M010400	MAIGUE_040	At risk	Industry	Section 4
IE_SH_24M010900	MAIGUE_080	At risk	Urban Waste Water	Agglomeration PE of 1,001 to 2,000
IE_SH_24M010900	MAIGUE_080	At risk	Agriculture	Agriculture
IE_SH_G_022	Ballingarry	At risk	Agriculture	Agriculture
IE_SH_G_046	Bruree	At risk	Agriculture	Agriculture
IE_SH_G_122	Kilmeedy	At risk	Agriculture	Agriculture
IE_SH_24M010600	MAIGUE_060	Review	Urban Waste Water	Agglomeration PE of 2,001 to 10,000
IE_SH_24M010600	MAIGUE_060	Review	Agriculture	Pasture
IE_SH_24M010980	MAIGUE_090	Review	Anthropogenic Pressures	Unknown
IE_SH_24W060910	West Liskennett_010	Review	Agriculture	Pasture
IE_SH_G_084	Fedamore	Review	Anthropogenic Pressures	Unknown

Further Characterisation Actions

The following further characterisation actions have been identified. These are necessary to help understand more fully issues in the subcatchment and their likely cause.

Code	Name	Action	Responsible Organisation
IE_SH_24W060910	West Liskennett_010	IA5 Multiple Sources in defined rural area (1km) or waterbody or rural town	Limerick City & County Council
IE_SH_24M010300	MAIGUE_030	IA7 Multiple Sources in Multiple Areas	Limerick City & County Council
IE_SH_24M010900	MAIGUE_080	IA7 Multiple Sources in Multiple Areas	Limerick City & County Council
IE_SH_24M010600	MAIGUE_060	IA2 Point Source Desk Based Assessment	Environmental Protection Agency
IE_SH_24M010900	MAIGUE_080	IA2 Point Source Desk Based Assessment	Environmental Protection Agency
IE_SH_24M010900	MAIGUE_080	IA1 Provision of Information	Inland Fisheries Ireland
IE_SH_24M010980	MAIGUE_090	IA4 Regulated Point Sources	Limerick City & County Council
IE_SH_24M010400	MAIGUE_040	IA7 Multiple Sources in Multiple Areas	Limerick City & County Council
IE_SH_24M010600	MAIGUE_060	IA3 Determination of Water Quality (unassigned waterbody)	Limerick City & County Council
IE_SH_24M010600	MAIGUE_060	IA1 Provision of Information	Limerick City & County Council