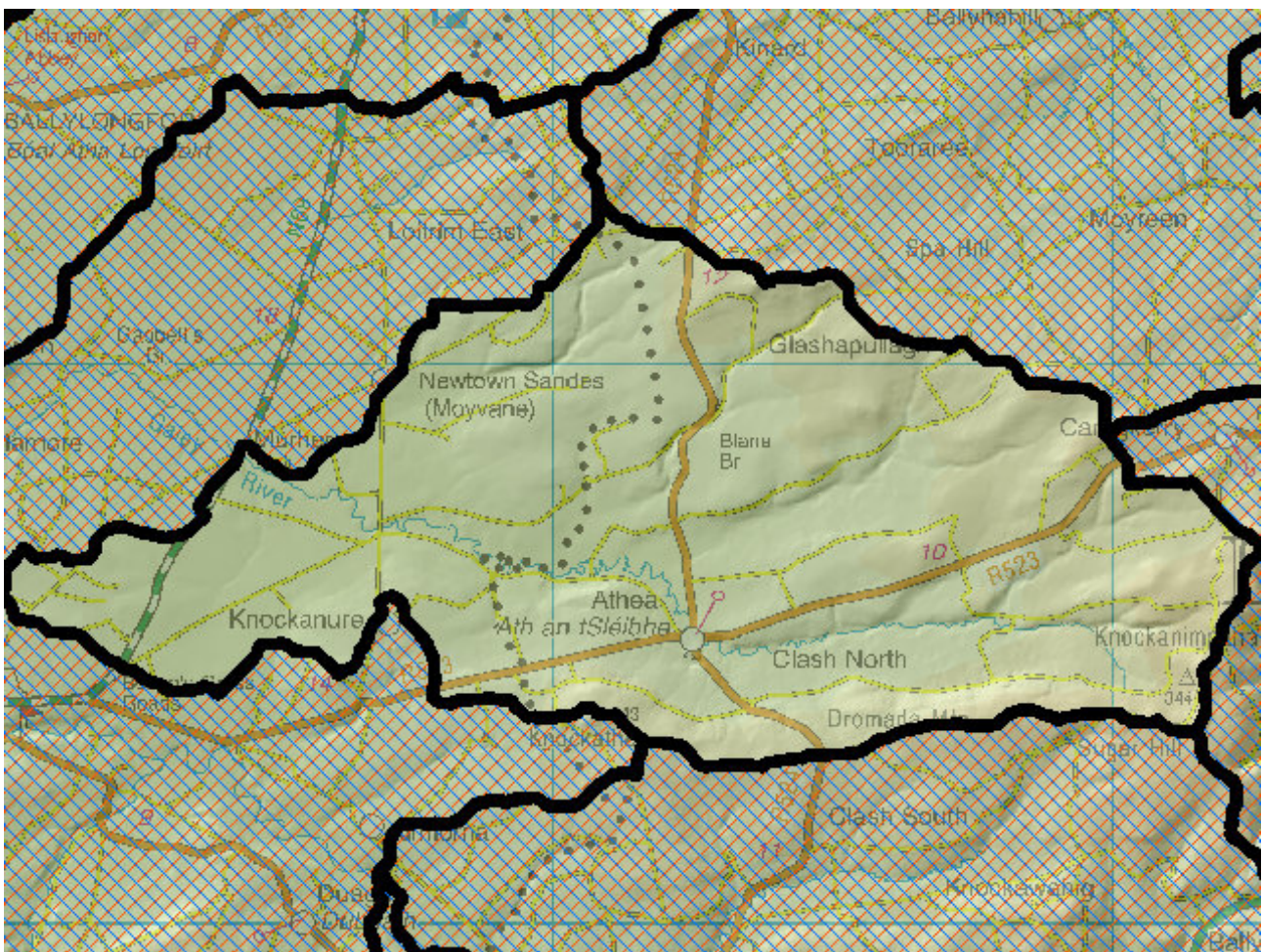


WFD Cycle 2

Catchment Tralee Bay-Feale

Subcatchment Galey_SC_010

Code 23_3



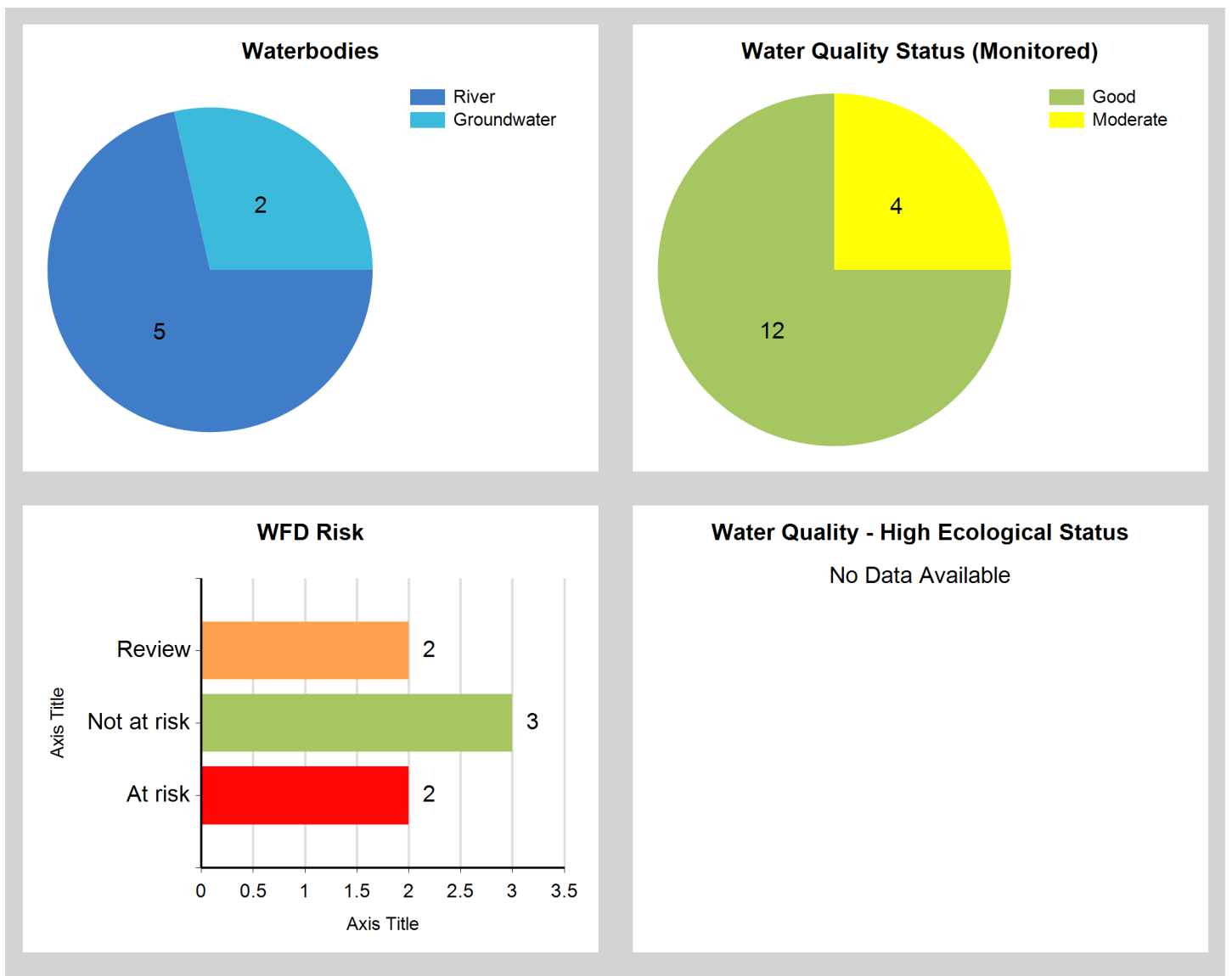
© Ordnance Survey Ireland. All rights reserved. Licence Number EN 0059208

Generated on: 09 Jan 2019

Assessment Purpose

This assessment has been produced as part of the national characterisation programme undertaken for the second cycle of Water Framework Directive river basin management planning. It has been led by the EPA, with input from Local Authorities and other public bodies, and with support from RPS consultants.

The characterisation assessments are automatically generated from the information stored in the WFD Application. They are based on information available to the end of 2015 but may be subject to change until the final 2018-21 river basin management plan is published. Users should ensure that they have the most up to date information by downloading the latest assessment before use.

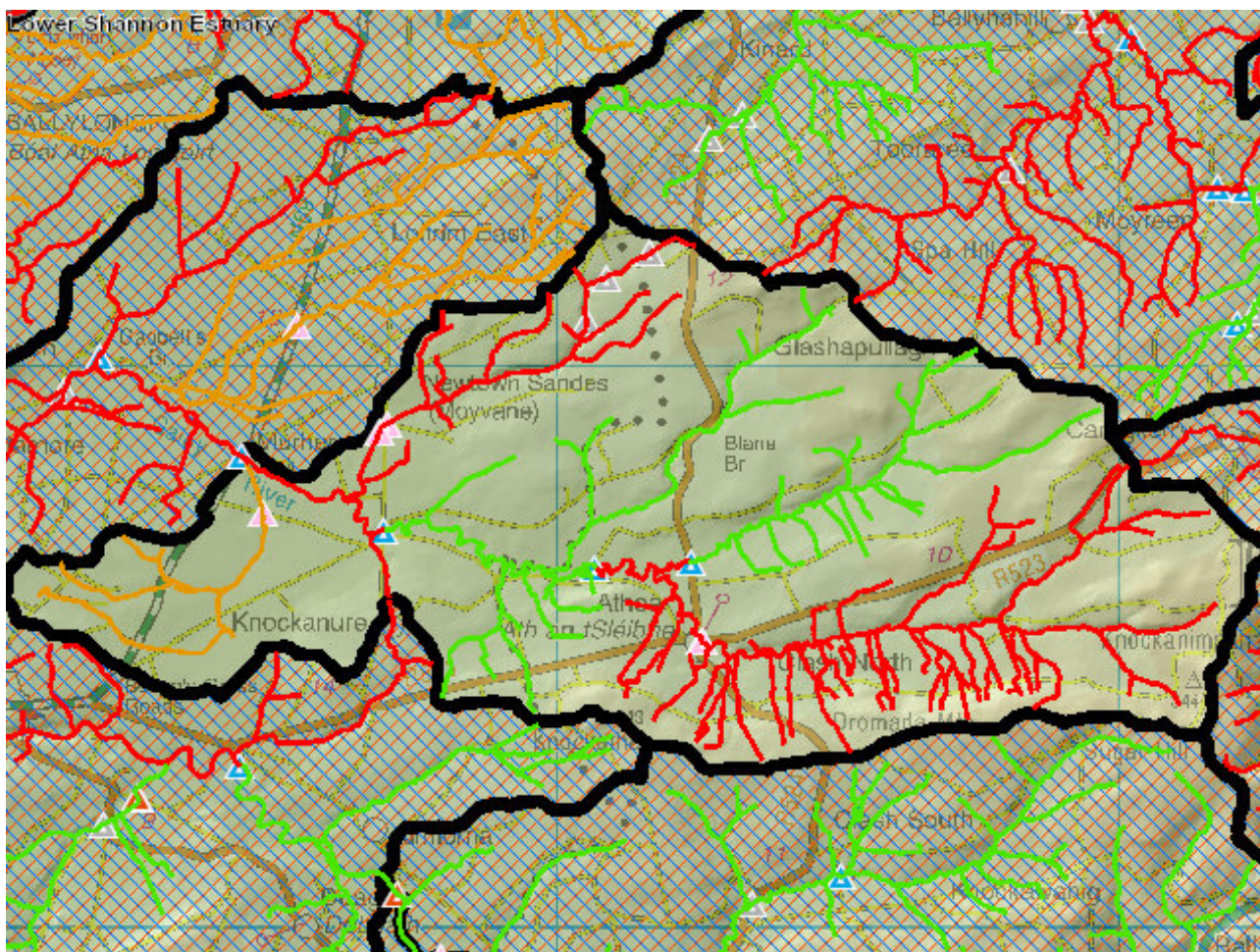


Evaluation of Priority Subcatchment Issues

Two out of five river water bodies within this subcatchment are AT RISK: Galey_010 and Galey due to Moderate biological status. Ballaghadigue_010 is under REVIEW due to its unassigned status.

Siltation and enrichment was noted within Galey_010 and both agriculture and forestry have been identified as significant pressures. Agriculture, channelisation and waste water treatment may be impacting Galey_020. A local catchment assessment is required for Ballaghadigue_010 to determine whether any issues exist.

Map Subcatchment Risk Map

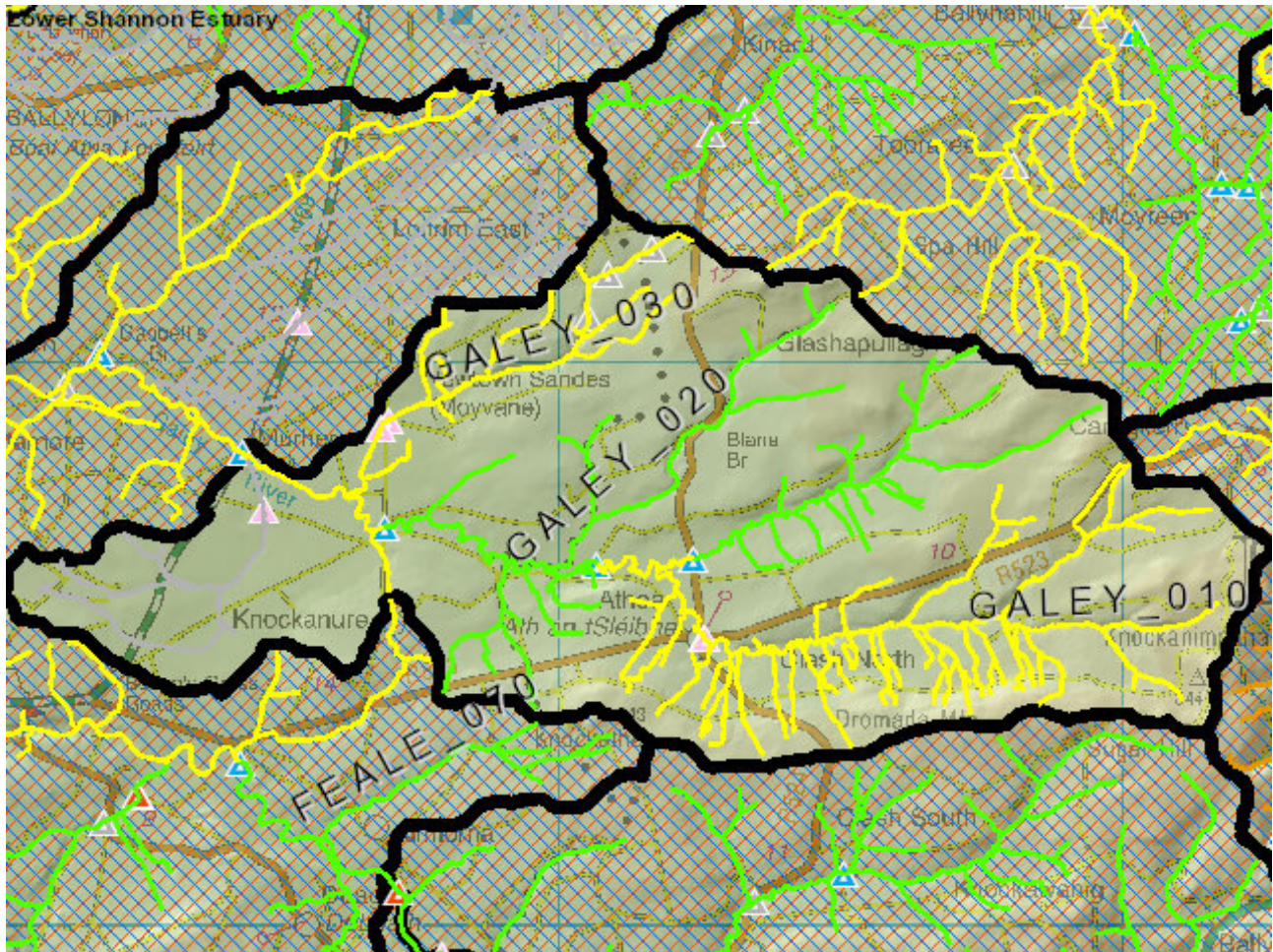


River And Lake Waterbodies: WFD Risk

The following river and lake waterbodies are in the subcatchment.

Code	Name	Type	WFD Risk	Significant Pressure
IE_SH_23G010200	GALEY_010	River	At risk	Yes
IE_SH_23G010400	GALEY_030	River	At risk	Yes
IE_SH_23B600860	BALLAGHADIGUE_010	River	Review	Yes

Map Subcatchment Water Quality Status Map



River And Lake Waterbodies: Water Quality Status

The water quality status of river and lake waterbodies in the subcatchment is as follows.

Code	Name	Type	2007-09	2010-12	2010-15
IE_SH_23B600860	BALLAGHADIGUE_010	River	Unassigned	Unassigned	Unassigned
IE_SH_23G010200	GALEY_010	River	Good	Good	Moderate
IE_SH_23G010300	GALEY_020	River	Good	Good	Good
IE_SH_23G010400	GALEY_030	River	Good	Moderate	Moderate
IE_SH_23K020100	KNOCKFINNISK_010	River	Good	Moderate	Good

Potentially Dependent Transitional and Coastal Waterbodies

The Transitional and Coastal waterbodies listed below intersect spatially with river and lake waterbodies in the subcatchment ...

Code	Name	Type	Local Authority	WFD Risk
------	------	------	-----------------	----------

Potentially Dependent Groundwater Waterbodies

The groundwaters listed below intersect spatially with river and lake waterbodies in the subcatchment ...

Code	Name	Type	Local Authority	WFD Risk
IE_SH_G_001	Abbeyfeale	Groundwater	Kerry County Council	Not at risk
IE_SH_G_030	Ballylongford	Groundwater	Limerick City & County Council	Review

Protected Areas intersecting River and Lake Waterbodies

The Protected Areas listed below intersect spatially with river and lake waterbodies in the subcatchment ...

Code	Name	Type	Waterbody Name	Association Type
IE0002165	Lower River Shannon SAC	SAC	GALEY_010	Overlapping / partly within Protected Area
IE0002165	Lower River Shannon SAC	SAC	GALEY_020	Overlapping / partly within Protected Area
IE0002165	Lower River Shannon SAC	SAC	GALEY_030	Overlapping / partly within Protected Area
IE0002165	Lower River Shannon SAC	SAC	KNOCKFINNISK_010	Overlapping / partly within Protected Area
IE0002351	Moanveanlugh Bog SAC	SAC	BALLAGHADIGUE_010	Overlapping / partly within Protected Area

Pressures

Below is a list of all significant pressures identified in the subcatchment.

Code	Name	WFD Risk	Pressure Category	Pressure Sub Category
IE_SH_23G010200	GALEY_010	At risk	Forestry	Forestry
IE_SH_23G010200	GALEY_010	At risk	Agriculture	Pasture
IE_SH_23G010400	GALEY_030	At risk	Agriculture	Pasture
IE_SH_23G010400	GALEY_030	At risk	Urban Waste Water	Agglomeration PE < 500
IE_SH_23G010400	GALEY_030	At risk	Hydromorphology	Land Drainage
IE_SH_23B600860	BALLAGHADIGUE_010	Review	Agriculture	Pasture
IE_SH_G_030	Ballylongford	Review	Anthropogenic Pressures	Unknown

Further Characterisation Actions

The following further characterisation actions have been identified. These are necessary to help understand more fully issues in the subcatchment and their likely cause.

Code	Name	Action	Responsible Organisation
IE_SH_23G010200	GALEY_010	IA7 Multiple Sources in Multiple Areas	Limerick City & County Council
IE_SH_23G010200	GALEY_010	IA1 Provision of Information	Inland Fisheries Ireland
IE_SH_23B600860	BALLAGHADIGUE_010	IA3 Determination of Water Quality (unassigned waterbody)	Limerick City & County Council
IE_SH_23G010400	GALEY_030	IA7 Multiple Sources in Multiple Areas	Kerry County Council