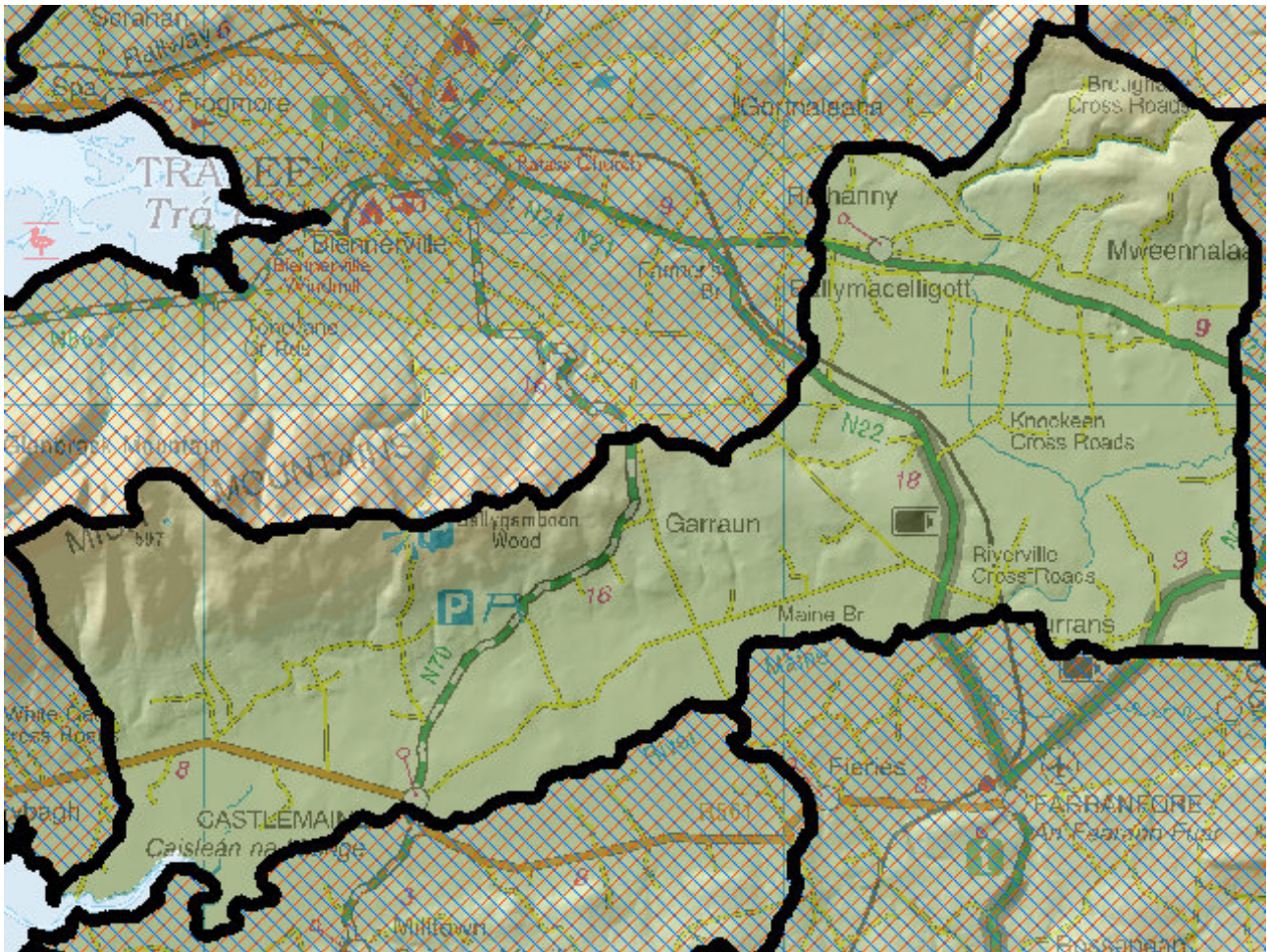


WFD Cycle 2

Catchment Laune-Maine-Dingle Bay

Subcatchment Maine_SC_030

Code 22_17



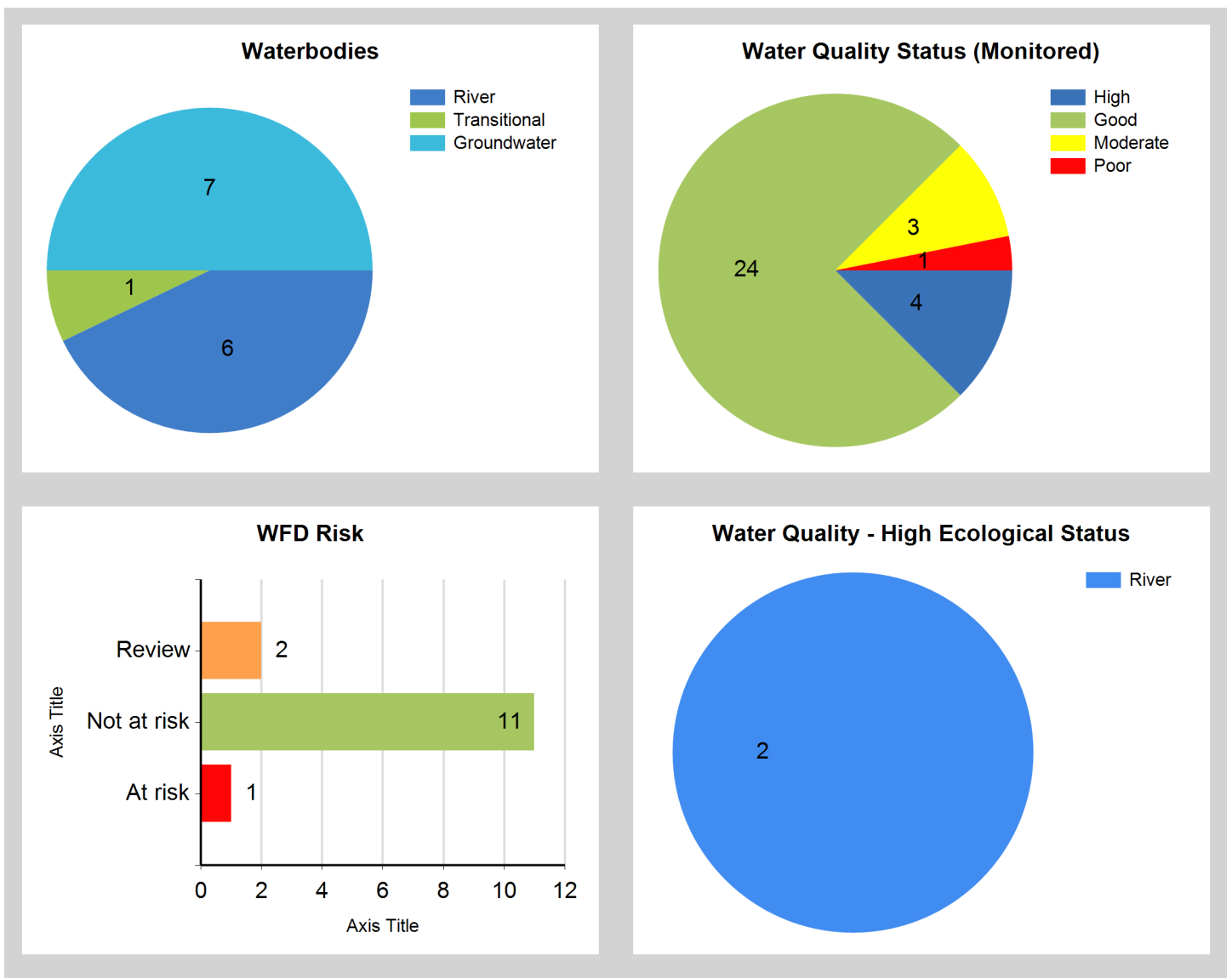
© Ordnance Survey Ireland. All rights reserved. Licence Number EN 0059208

Generated on: 09 Jan 2019

Assessment Purpose

This assessment has been produced as part of the national characterisation programme undertaken for the second cycle of Water Framework Directive river basin management planning. It has been led by the EPA, with input from Local Authorities and other public bodies, and with support from RPS consultants.

The characterisation assessments are automatically generated from the information stored in the WFD Application. They are based on information available to the end of 2015 but may be subject to change until the final 2018-21 river basin management plan is published. Users should ensure that they have the most up to date information by downloading the latest assessment before use.

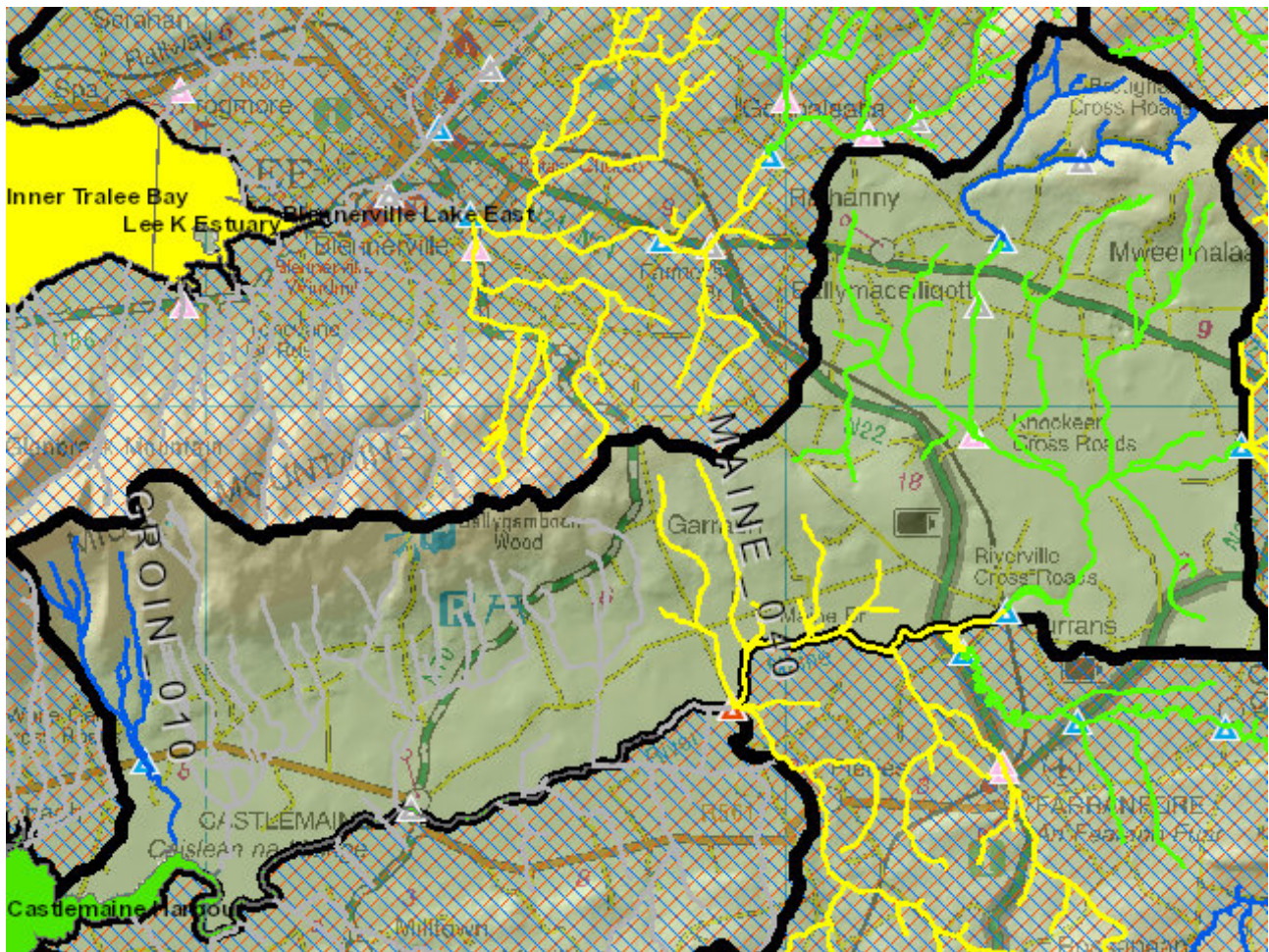


River And Lake Waterbodies: WFD Risk

The following river and lake waterbodies are in the subcatchment.

Code	Name	Type	WFD Risk	Significant Pressure
IE_SW_22M010700	MAINE_040	River	At risk	Yes
IE_SW_22G080300	GROIN_010	River	Not at risk	Yes
IE_SW_22L021000	LITTLE MAINE_020	River	Not at risk	Yes
IE_SW_22M010500	MAINE_030	River	Not at risk	Yes
IE_SW_22M010800	MAINE_050	River	Not at risk	Yes

Map Subcatchment Water Quality Status Map



River And Lake Waterbodies: Water Quality Status

The water quality status of river and lake waterbodies in the subcatchment is as follows.

Code	Name	Type	2007-09	2010-12	2010-15
IE_SW_22G080300	GROIN_010	River	High	Good	High
IE_SW_22L020500	LITTLE MAINE_010	River	Good	High	High
IE_SW_22L021000	LITTLE MAINE_020	River	Good	Poor	Good
IE_SW_22M010500	MAINE_030	River	Good	Good	Good
IE_SW_22M010700	MAINE_040	River	Moderate	Moderate	Moderate
IE_SW_22M010800	MAINE_050	River	Unassigned	Unassigned	Unassigned

Potentially Dependent Transitional and Coastal Waterbodies

The Transitional and Coastal waterbodies listed below intersect spatially with river and lake waterbodies in the subcatchment ...

Code	Name	Type	Local Authority	WFD Risk
IE_SW_230_0200	Castlemaine Harbour	Transitional	Kerry County Council	Not at risk

Potentially Dependent Groundwater Waterbodies

The groundwaters listed below intersect spatially with river and lake waterbodies in the subcatchment ...

Code	Name	Type	Local Authority	WFD Risk
IE_SH_G_001	Abbeyfeale	Groundwater	Kerry County Council	Not at risk
IE_SH_G_044	Brandon Head	Groundwater	Kerry County Council	Not at risk
IE_SH_G_223	Spa	Groundwater	Kerry County Council	Not at risk
IE_SH_G_226	Tralee	Groundwater	Kerry County Council	Review
IE_SW_G_026	Castlemaine	Groundwater	Kerry County Council	Review
IE_SW_G_033	Dingle	Groundwater	Kerry County Council	Not at risk
IE_SW_G_073	Scartaglin	Groundwater	Kerry County Council	Not at risk

Protected Areas intersecting River and Lake Waterbodies

The Protected Areas listed below intersect spatially with river and lake waterbodies in the subcatchment ...

Code	Name	Type	Waterbody Name	Association Type
IE0000343	Castlemaine Harbour SAC	SAC	GROIN_010	Overlapping / partly within Protected Area
IE0000343	Castlemaine Harbour SAC	SAC	MAINE_050	Overlapping / partly within Protected Area
IE0004029	Castlemaine Harbour SPA	SPA	MAINE_050	Overlapping / partly within Protected Area
IEPA5D0006	River Brown Flesk	Salmonid	MAINE_040	Overlapping / partly within Protected Area
IEPA5D0023	River Maine	Salmonid	MAINE_040	Overlapping / partly within Protected Area
IEPA5D0023	River Maine	Salmonid	MAINE_050	Overlapping / partly within Protected Area

Pressures

Below is a list of all significant pressures identified in the subcatchment.

Code	Name	WFD Risk	Pressure Category	Pressure Sub Category
IE_SW_22M010700	MAINE_040	At risk	Hydromorphology	Channelisation
IE_SH_G_226	Tralee	Review	Anthropogenic Pressures	Unknown
IE_SW_G_026	Castlemaine	Review	Anthropogenic Pressures	Unknown

Further Characterisation Actions

The following further characterisation actions have been identified. These are necessary to help understand more fully issues in the subcatchment and their likely cause.

Code	Name	Action	Responsible Organisation
IE_SW_22M010700	MAINE_040	IA1 Provision of Information	Environmental Protection Agency
IE_SW_22M010700	MAINE_040	IA1 Provision of Information	Inland Fisheries Ireland