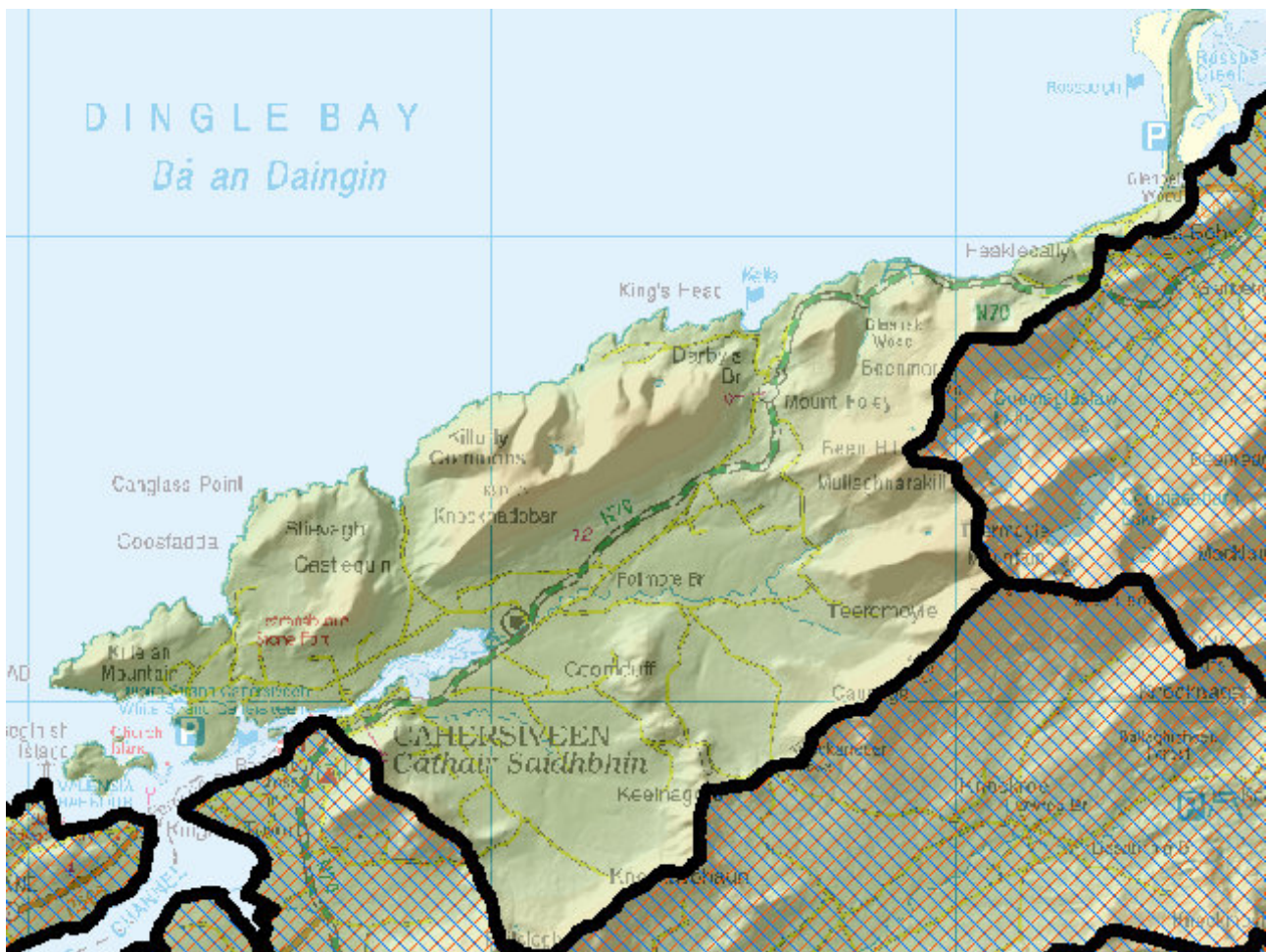


WFD Cycle 2

Catchment Laune-Maine-Dingle Bay

Subcatchment Ferta_SC_010

Code 22_11



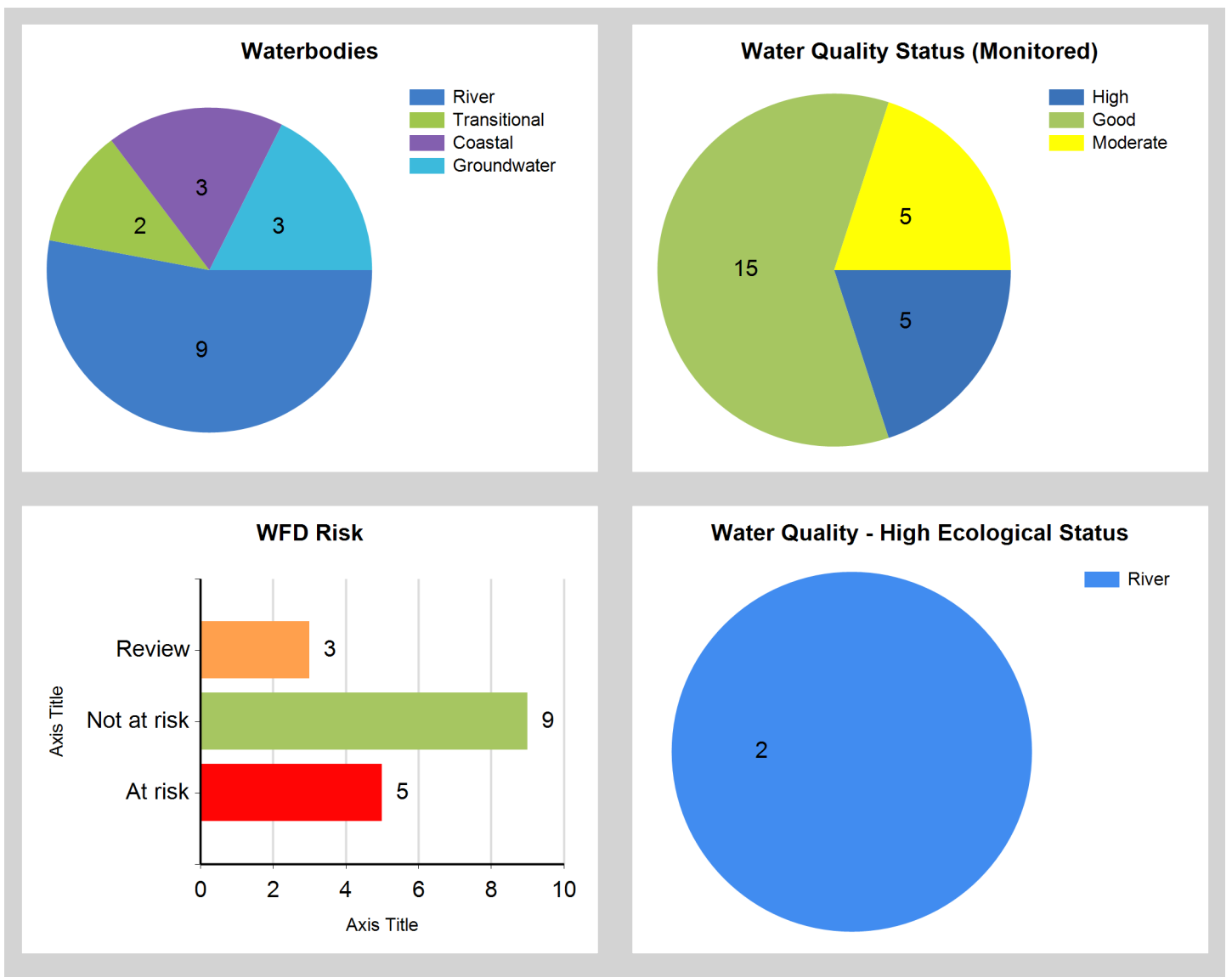
© Ordnance Survey Ireland. All rights reserved. Licence Number EN 0059208

Generated on: 08 Jan 2019

Assessment Purpose

This assessment has been produced as part of the national characterisation programme undertaken for the second cycle of Water Framework Directive river basin management planning. It has been led by the EPA, with input from Local Authorities and other public bodies, and with support from RPS consultants.

The characterisation assessments are automatically generated from the information stored in the WFD Application. They are based on information available to the end of 2015 but may be subject to change until the final 2018-21 river basin management plan is published. Users should ensure that they have the most up to date information by downloading the latest assessment before use.

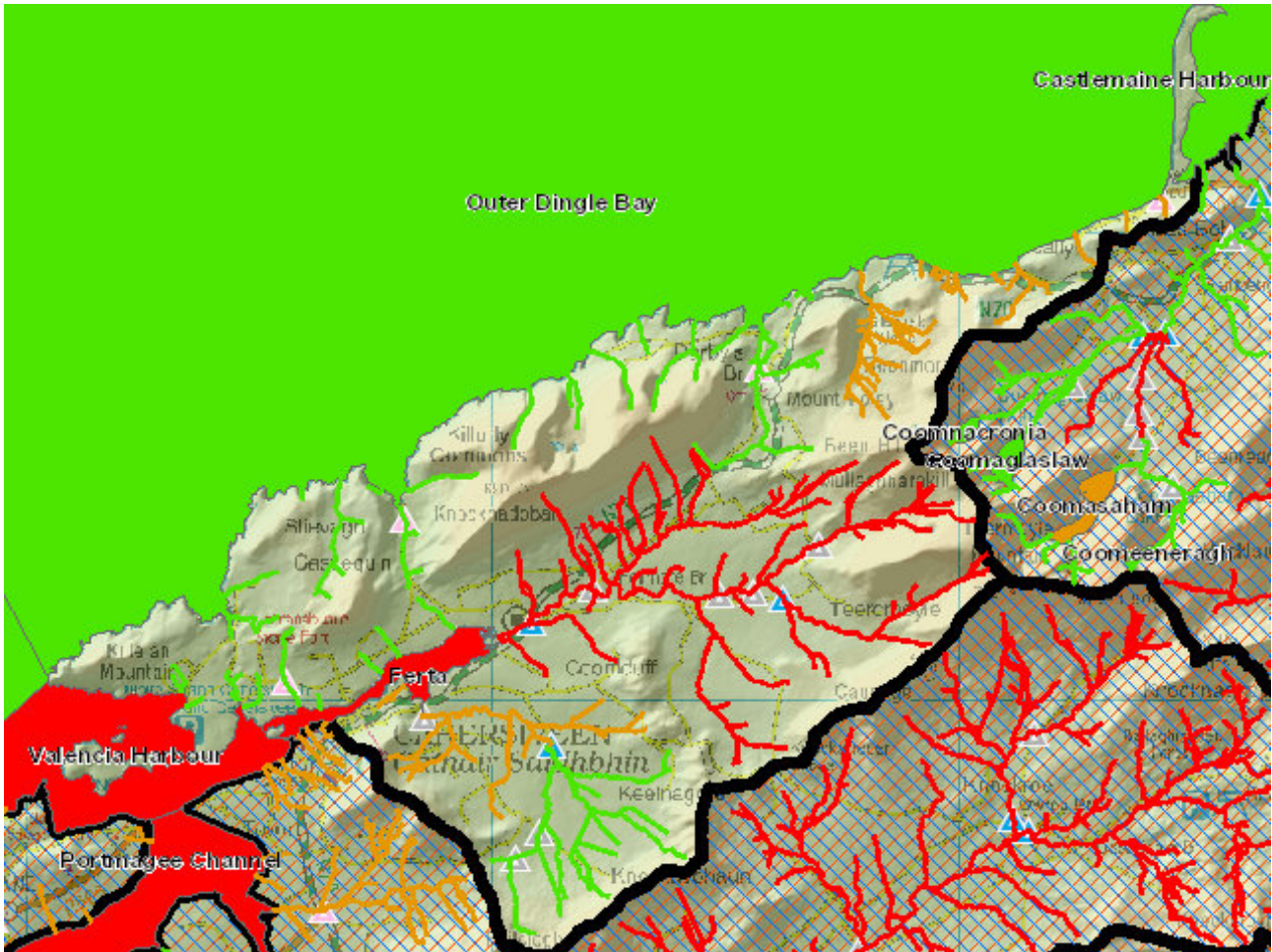


Evaluation of Priority Subcatchment Issues

Two High Status water bodies, Caherlehillan Stream_010 and Teermoyle Stream_010 are both At Risk, due to a deterioration from High to Good Status in 2013-2015. A Drinking Water Treatment Plant is located approximately 50 m upstream of the monitoring station in Caherlehillan Stream_010. Surface water discharges from plant processes e.g. filter backwashing, may be impacting on water quality and causing a deterioration in status. Apart from this potentially significant pressure, no other point source discharges in the subcatchment were deemed to be significant. There is potential for impact from forestry /clearfelling and peat harvesting.

The reason for the deterioration in Status of Teermoyle Stream_010 is not clear, further investigation is required to determine possible impacts from catchment activities e.g. Peat and Agriculture. In Ferta_010, the EPA Biologists flagged quarries as the Suspected cause of pollution in 2007-2009 and 2010-2012. There is a quarry, is located adjacent to the monitoring point. Further investigation is required to determine the impacts from this quarry.

Map Subcatchment Risk Map

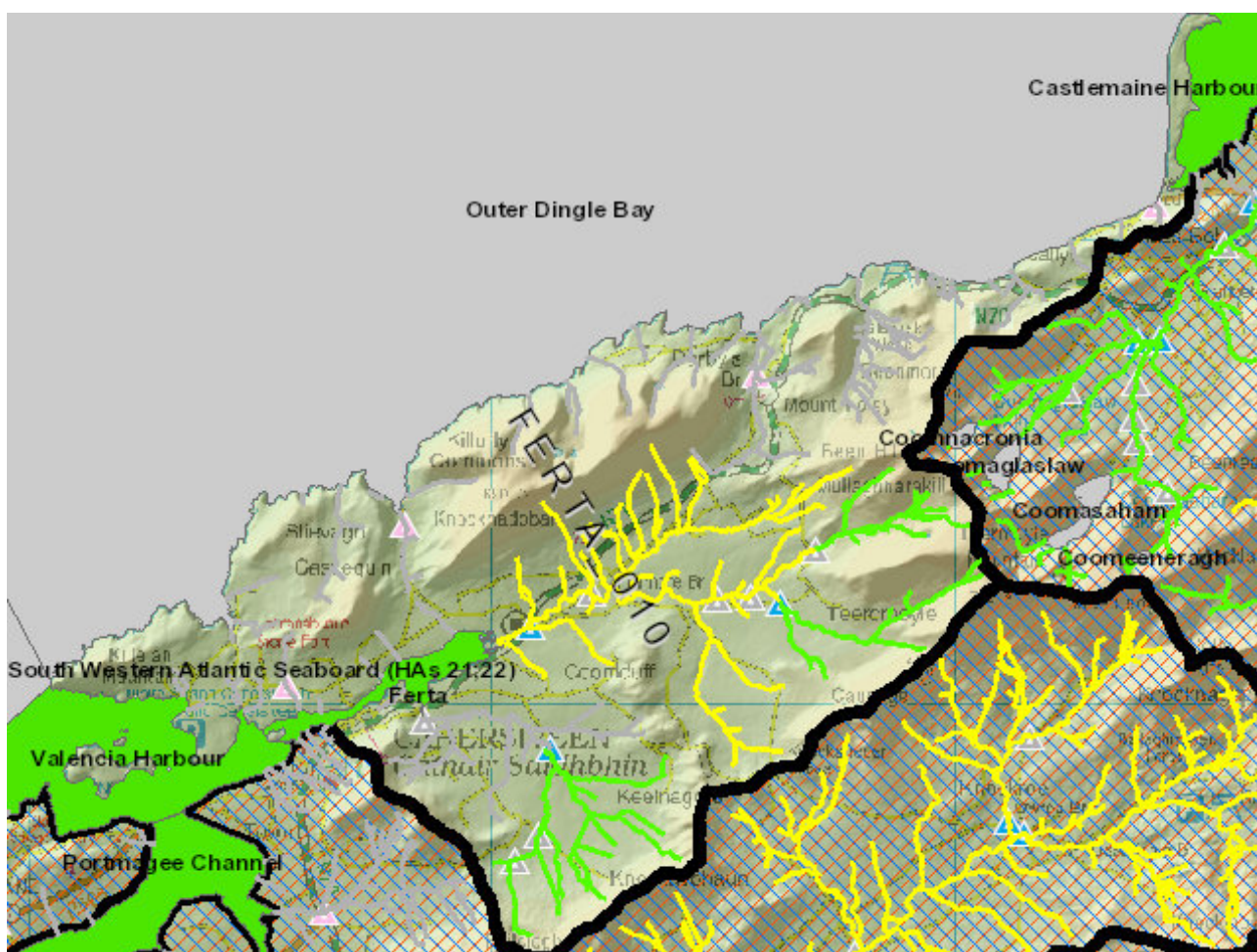


River And Lake Waterbodies: WFD Risk

The following river and lake waterbodies are in the subcatchment.

Code	Name	Type	WFD Risk	Significant Pressure
IE_SW_22C200100	CAHERLEHILLAN STREAM_010	River	At risk	Yes
IE_SW_22F011000	FERTA_010	River	At risk	Yes
IE_SW_22T040500	TEERMOYLE STREAM_010	River	At risk	Yes
IE_SW_22C030300	CARHAN_020	River	Review	Yes
IE_SW_22F270920	FAHA (Kerry)_010	River	Review	No
IE_SW_22K540860	KILLURLY_WEST_010	River	Not at risk	Yes
IE_SW_22R120790	REACASHLAGH_010	River	Not at risk	Yes

Map Subcatchment Water Quality Status Map



River And Lake Waterbodies: Water Quality Status

The water quality status of river and lake waterbodies in the subcatchment is as follows.

Code	Name	Type	2007-09	2010-12	2010-15
IE_SW_22C200100	CAHERLEHILLAN STREAM_010	River	High	High	Good
IE_SW_22C030200	CARHAN_010	River	Moderate	Good	Good
IE_SW_22C030300	CARHAN_020	River	Unassigned	Unassigned	Unassigned
IE_SW_22F270920	FAHA (Kerry)_010	River	Unassigned	Unassigned	Unassigned
IE_SW_22F011000	FERTA_010	River	Moderate	Moderate	Moderate
IE_SW_22F050700	FOUGHILL_010	River	Unassigned	Unassigned	Unassigned
IE_SW_22K540860	KILLURLY_WEST_010	River	Unassigned	Unassigned	Unassigned
IE_SW_22R120790	REACASHLAGH_010	River	Unassigned	Unassigned	Unassigned
IE_SW_22T040500	TEERMOYLE STREAM_010	River	High	High	Good

Potentially Dependent Transitional and Coastal Waterbodies

The Transitional and Coastal waterbodies listed below intersect spatially with river and lake waterbodies in the subcatchment ...

Code	Name	Type	Local Authority	WFD Risk
IE_SW_150_0000	South Western Atlantic Seaboard (HAS 21;22)	Coastal	Kerry County Council	Not at risk
IE_SW_220_0000	Valencia Harbour	Coastal	Kerry County Council	At risk
IE_SW_230_0000	Outer Dingle Bay	Coastal	Kerry County Council	Not at risk
IE_SW_220_0100	Ferta	Transitional	Kerry County Council	At risk
IE_SW_230_0200	Castlemaine Harbour	Transitional	Kerry County Council	Not at risk

Potentially Dependent Groundwater Waterbodies

The groundwaters listed below intersect spatially with river and lake waterbodies in the subcatchment ...

Code	Name	Type	Local Authority	WFD Risk
IE_SW_G_019	Beara Sneem	Groundwater	Kerry County Council	Not at risk
IE_SW_G_022	Cahersiveen	Groundwater	Kerry County Council	Not at risk
IE_SW_G_048	Laune Muckcross	Groundwater	Kerry County Council	Review

Protected Areas intersecting River and Lake Waterbodies

The Protected Areas listed below intersect spatially with river and lake waterbodies in the subcatchment ...

Code	Name	Type	Waterbody Name	Association Type
IE0002262	Valencia Harbour/Portmagee Channel SAC	SAC	FOUGHILL_010	Overlapping / partly within Protected Area
IE0004029	Castlemaine Harbour SPA	SPA	FAHA (Kerry)_010	Overlapping / partly within Protected Area
IEPA1_SW_22C200100	CAHERLEHILLAN STREAM_010	Drinking Water	CAHERLEHILLAN STREAM_010	Within Protected Area
IEPA1_SW_22R120790	REACASHLAGH 22_010	Drinking Water	REACASHLAGH_010	Within Protected Area
IEPA2_0019	Valentia Harbour	Shellfish Area	FOUGHILL_010	Overlapping / partly within Protected Area

Pressures

Below is a list of all significant pressures identified in the subcatchment.

Code	Name	WFD Risk	Pressure Category	Pressure Sub Category
IE_SW_220_0000	Valencia Harbour	At risk	Domestic Waste Water	Waste Water discharge
IE_SW_220_0000	Valencia Harbour	At risk	Agriculture	Agriculture
IE_SW_220_0100	Ferta	At risk	Domestic Waste Water	Waste Water discharge
IE_SW_220_0100	Ferta	At risk	Agriculture	Agriculture
IE_SW_22C200100	CAHERLEHILLAN STREAM_010	At risk	Water Treatment	Discharges
IE_SW_22F011000	FERTA_010	At risk	Extractive Industry	Quarries
IE_SW_22F011000	FERTA_010	At risk	Agriculture	Agriculture
IE_SW_22T040500	TEERMOYLE STREAM_010	At risk	Extractive Industry	Peat
IE_SW_22T040500	TEERMOYLE STREAM_010	At risk	Forestry	Clearfelling
IE_SW_22C030300	CARHAN_020	Review	Extractive Industry	Peat
IE_SW_G_048	Laune Muckcross	Review	Anthropogenic Pressures	Unknown

Further Characterisation Actions

The following further characterisation actions have been identified. These are necessary to help understand more fully issues in the subcatchment and their likely cause.

Code	Name	Action	Responsible Organisation
IE_SW_22C200100	CAHERLEHILLAN STREAM_010	IA8 High status RWB pressures	Kerry County Council
IE_SW_22C030300	CARHAN_020	IA3 Determination of Water Quality (unassigned waterbody)	Kerry County Council
IE_SW_22C200100	CAHERLEHILLAN STREAM_010	IA1 Provision of Information	Kerry County Council
IE_SW_22T040500	TEERMOYLE STREAM_010	IA8 High status RWB pressures	Kerry County Council
IE_SW_22F270920	FAHA (Kerry)_010	IA3 Determination of Water Quality (unassigned waterbody)	Kerry County Council
IE_SW_22F011000	FERTA_010	IA7 Multiple Sources in Multiple Areas	Kerry County Council