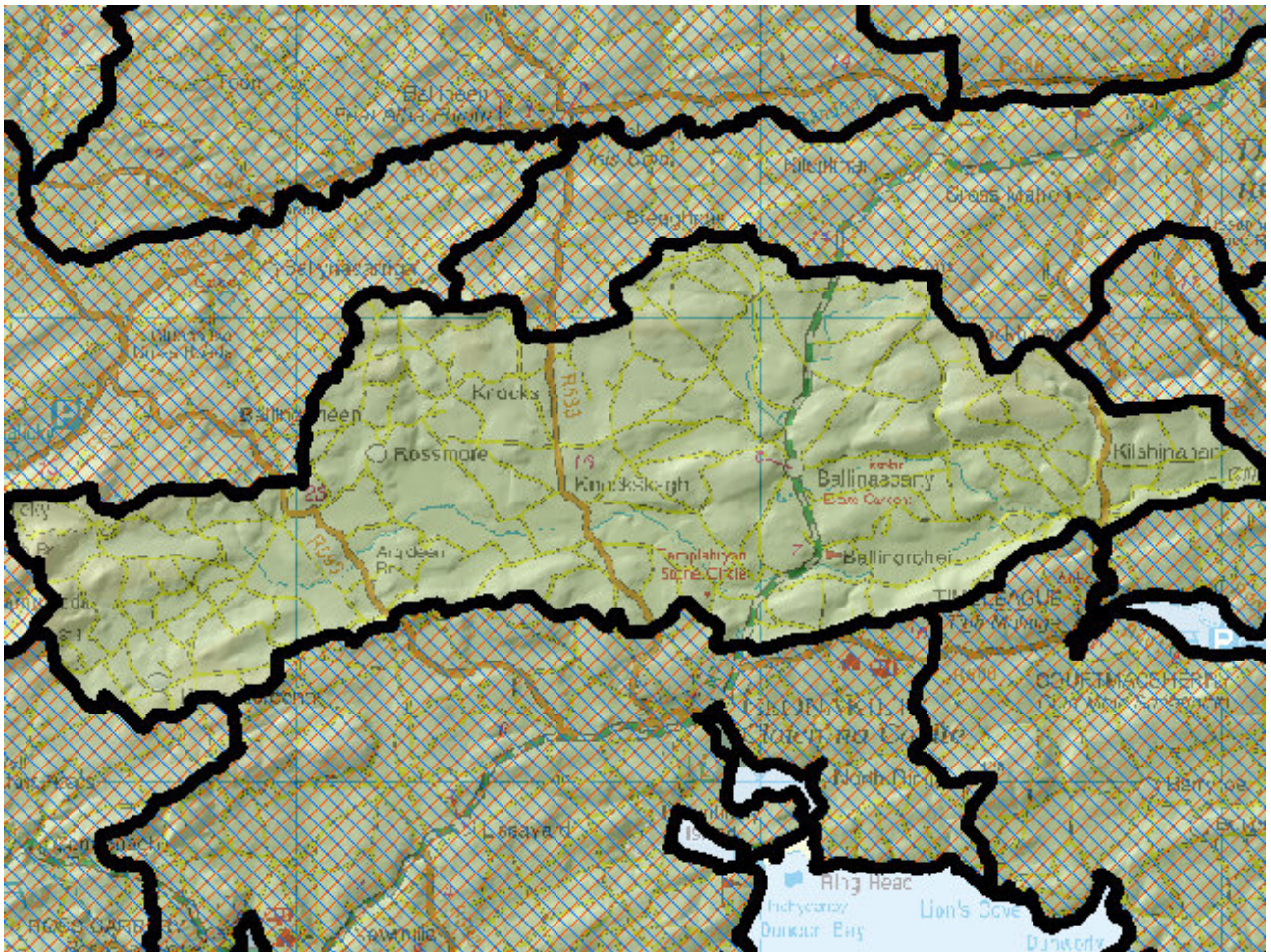


WFD Cycle 2

Catchment Bandon-Ilen

Subcatchment Argideen_SC_010

Code 20_12



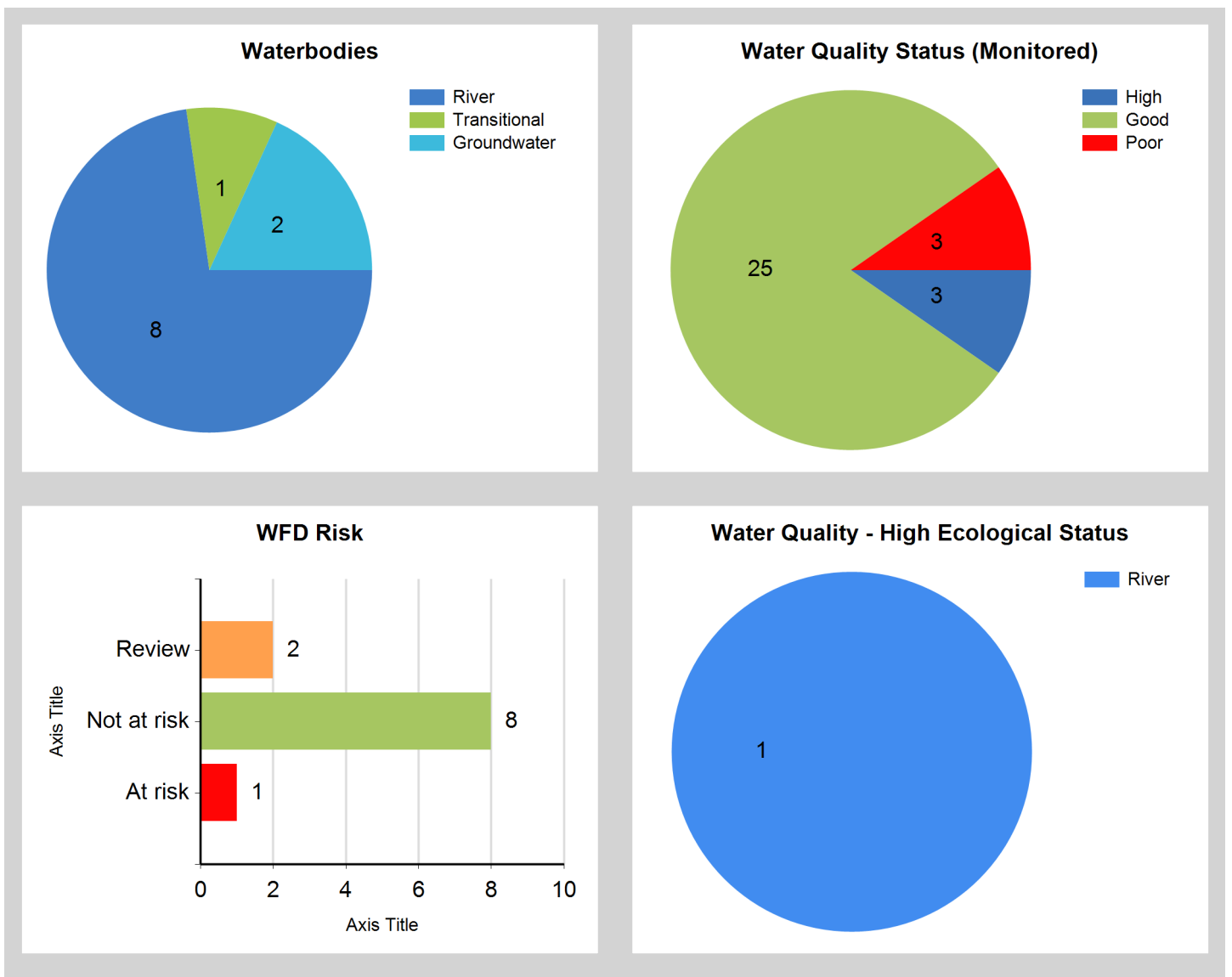
© Ordnance Survey Ireland. All rights reserved. Licence Number EN 0059208

Generated on: 08 Jan 2019

Assessment Purpose

This assessment has been produced as part of the national characterisation programme undertaken for the second cycle of Water Framework Directive river basin management planning. It has been led by the EPA, with input from Local Authorities and other public bodies, and with support from RPS consultants.

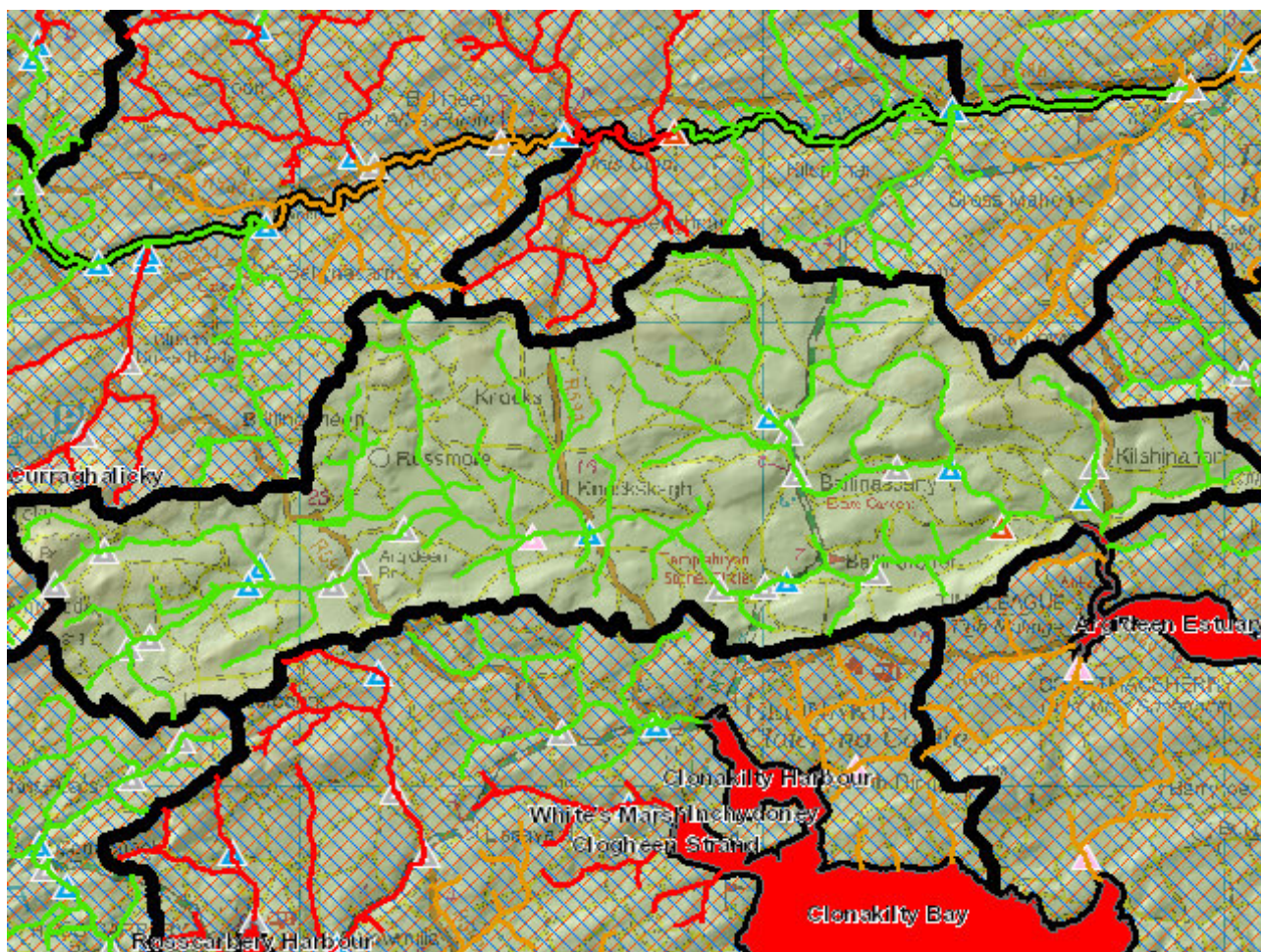
The characterisation assessments are automatically generated from the information stored in the WFD Application. They are based on information available to the end of 2015 but may be subject to change until the final 2018-21 river basin management plan is published. Users should ensure that they have the most up to date information by downloading the latest assessment before use.



Evaluation of Priority Subcatchment Issues

All water bodies within this subcatchment are NOT AT RISK.

Map Subcatchment Risk Map

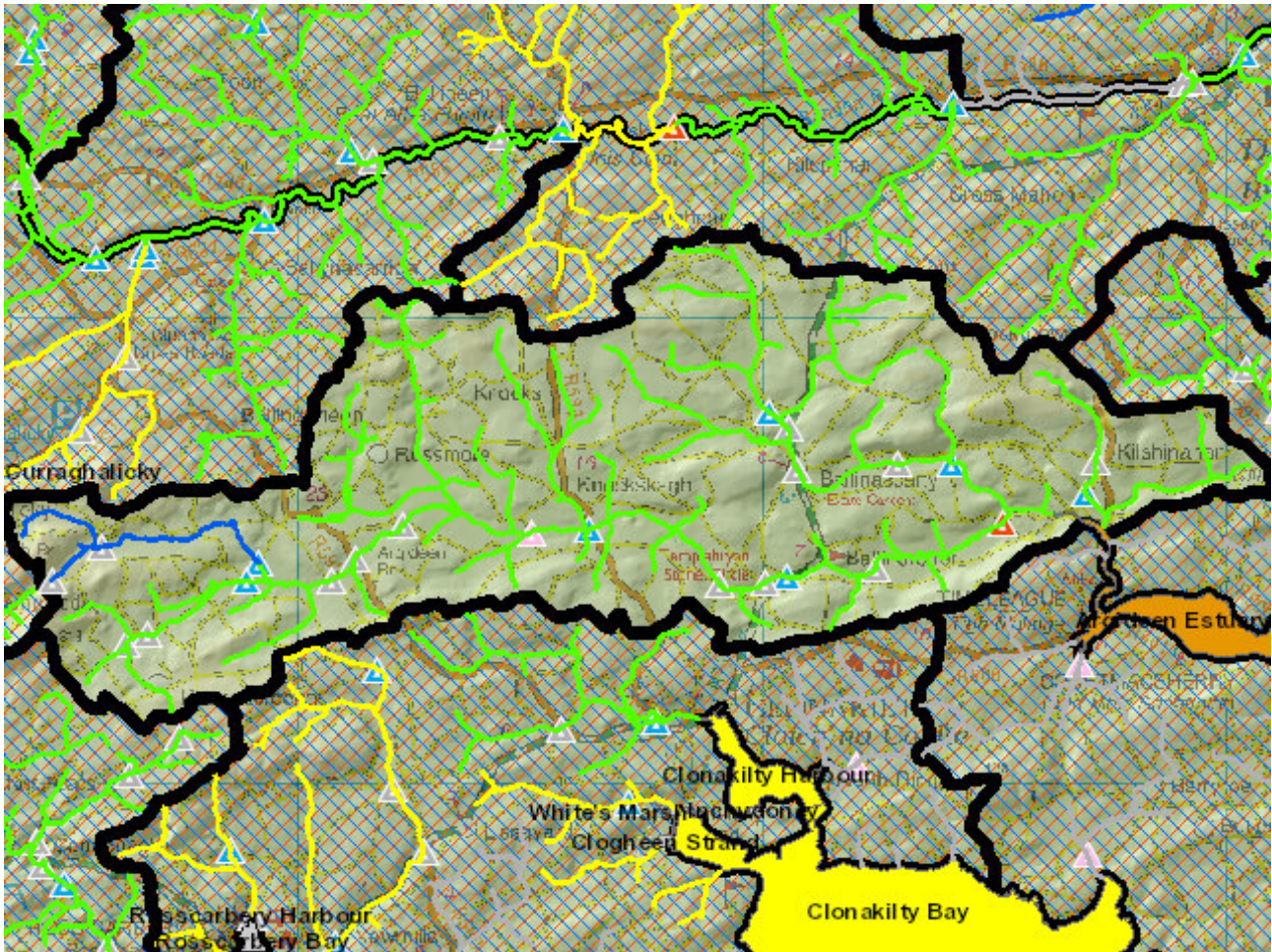


River And Lake Waterbodies: WFD Risk

The following river and lake waterbodies are in the subcatchment.

Code	Name	Type	WFD Risk	Significant Pressure
------	------	------	----------	----------------------

Map Subcatchment Water Quality Status Map



River And Lake Waterbodies: Water Quality Status

The water quality status of river and lake waterbodies in the subcatchment is as follows.

Code	Name	Type	2007-09	2010-12	2010-15
IE_SW_20A020045	ARGIDEEN_010	River	Good	Good	Good
IE_SW_20A020060	ARGIDEEN_020	River	Good	Good	Good
IE_SW_20A020100	ARGIDEEN_030	River	Good	Good	Good
IE_SW_20A020200	ARGIDEEN_040	River	Good	Good	Good
IE_SW_20B100200	BURRANE_010	River	Good	Good	Good
IE_SW_20G020400	GLASHAGLORAGH (CORK)_010	River	High	High	High
IE_SW_20O010200	OWENKEAGH_010	River	Good	Good	Good
IE_SW_20O010600	OWENKEAGH_020	River	Good	Good	Good

Potentially Dependent Transitional and Coastal Waterbodies

The Transitional and Coastal waterbodies listed below intersect spatially with river and lake waterbodies in the subcatchment ...

Code	Name	Type	Local Authority	WFD Risk
IE_SW_090_0200	Argideen Estuary	Transitional	Cork County Council	At risk

Potentially Dependent Groundwater Waterbodies

The groundwaters listed below intersect spatially with river and lake waterbodies in the subcatchment ...

Code	Name	Type	Local Authority	WFD Risk
IE_SW_G_085	Skibbereen-Clonakilty	Groundwater	Cork County Council	Review
IE_SW_G_086	Bandon	Groundwater	Cork County Council	Review

Protected Areas intersecting River and Lake Waterbodies

The Protected Areas listed below intersect spatially with river and lake waterbodies in the subcatchment ...

Code	Name	Type	Waterbody Name	Association Type
IE0004219	Courtmacsherry Bay SPA	SPA	BURRANE_010	Overlapping / partly within Protected Area
IEPA1_SW_20A020 100	ARGIDEEN_030	Drinking Water	ARGIDEEN_030	Within Protected Area
IEPA5D0002	River Argideen	Salmonid	ARGIDEEN_030	Overlapping / partly within Protected Area
IEPA5D0002	River Argideen	Salmonid	ARGIDEEN_040	Overlapping / partly within Protected Area
IEPA5D0002	River Argideen	Salmonid	ARGIDEEN_010	Overlapping / partly within Protected Area
IEPA5D0002	River Argideen	Salmonid	ARGIDEEN_020	Overlapping / partly within Protected Area

Pressures

Below is a list of all significant pressures identified in the subcatchment.

Code	Name	WFD Risk	Pressure Category	Pressure Sub Category
IE_SW_090_0200	Argideen Estuary	At risk	Urban Waste Water	Agglomeration PE > 10,000
IE_SW_090_0200	Argideen Estuary	At risk	Agriculture	Pasture
IE_SW_G_085	Skibbereen-Clonakilty	Review	Anthropogenic Pressures	Unknown
IE_SW_G_086	Bandon	Review	Anthropogenic Pressures	Unknown

Further Characterisation Actions

The following further characterisation actions have been identified. These are necessary to help understand more fully issues in the subcatchment and their likely cause.

Code	Name	Action	Responsible Organisation
------	------	--------	--------------------------