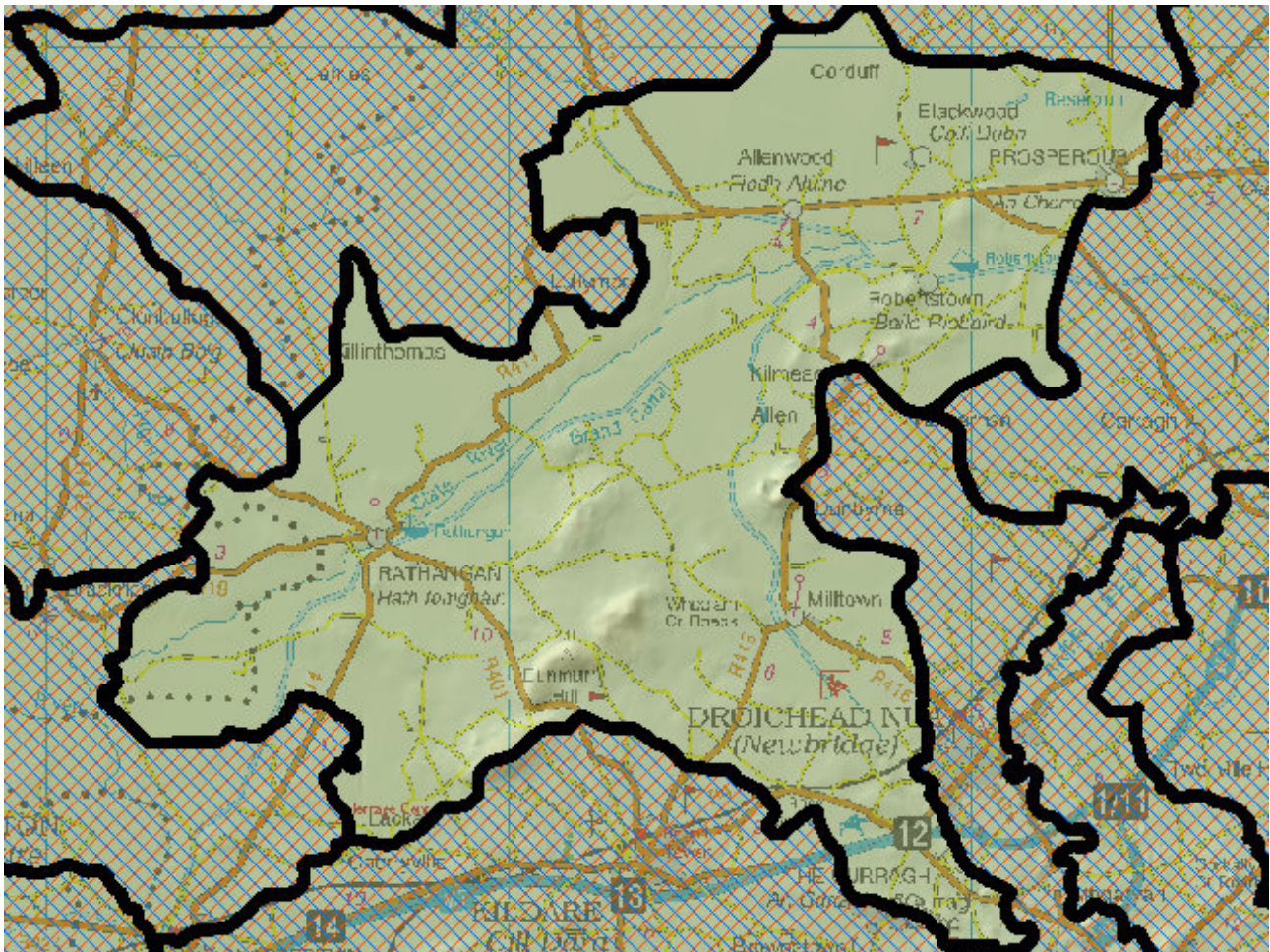


WFD Cycle 2

Catchment Barrow

Subcatchment Slate_SC_010

Code 14_16



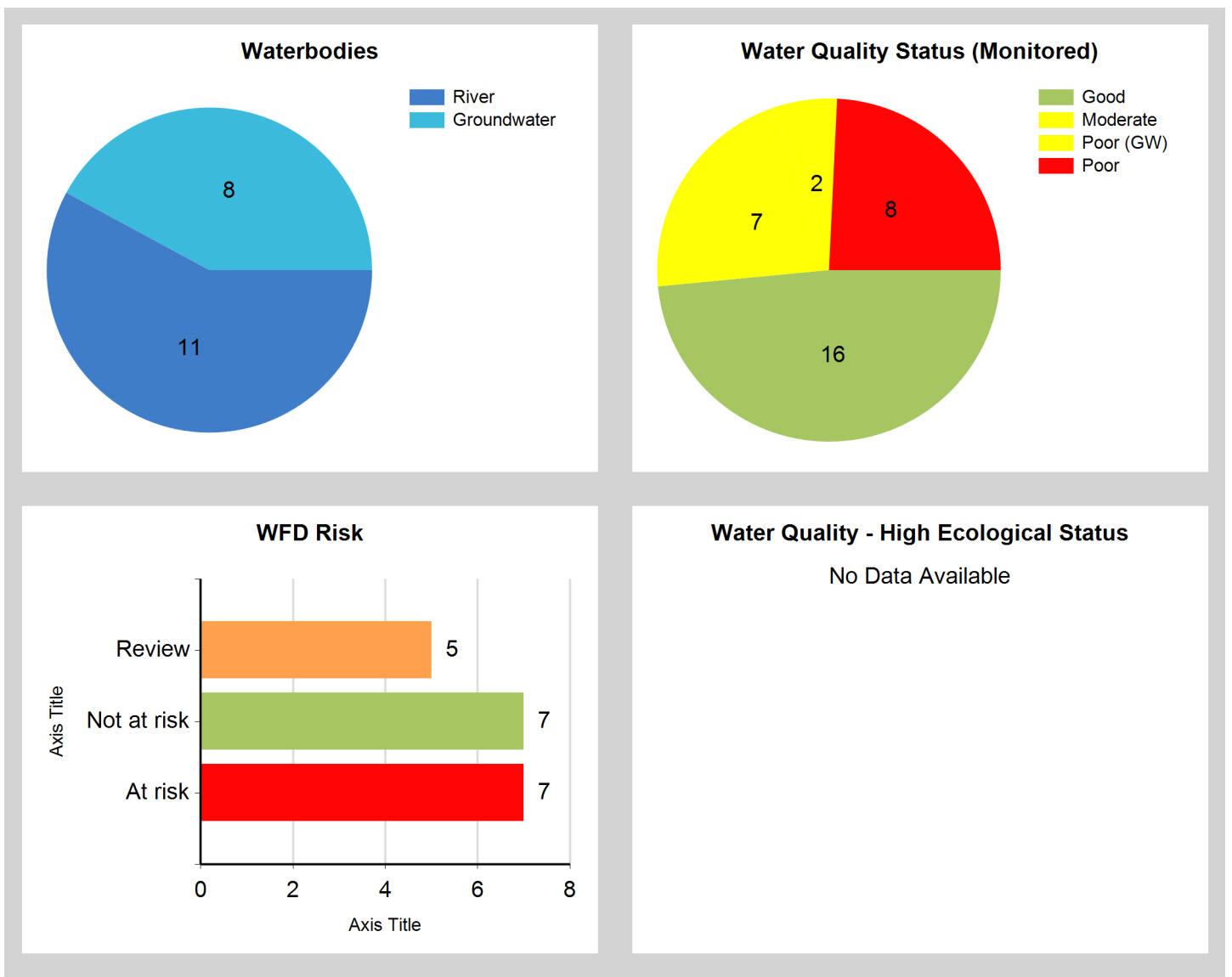
© Ordnance Survey Ireland. All rights reserved. Licence Number EN 0059208

Generated on: 04 Jan 2019

Assessment Purpose

This assessment has been produced as part of the national characterisation programme undertaken for the second cycle of Water Framework Directive river basin management planning. It has been led by the EPA, with input from Local Authorities and other public bodies, and with support from RPS consultants.

The characterisation assessments are automatically generated from the information stored in the WFD Application. They are based on information available to the end of 2015 but may be subject to change until the final 2018-21 river basin management plan is published. Users should ensure that they have the most up to date information by downloading the latest assessment before use.



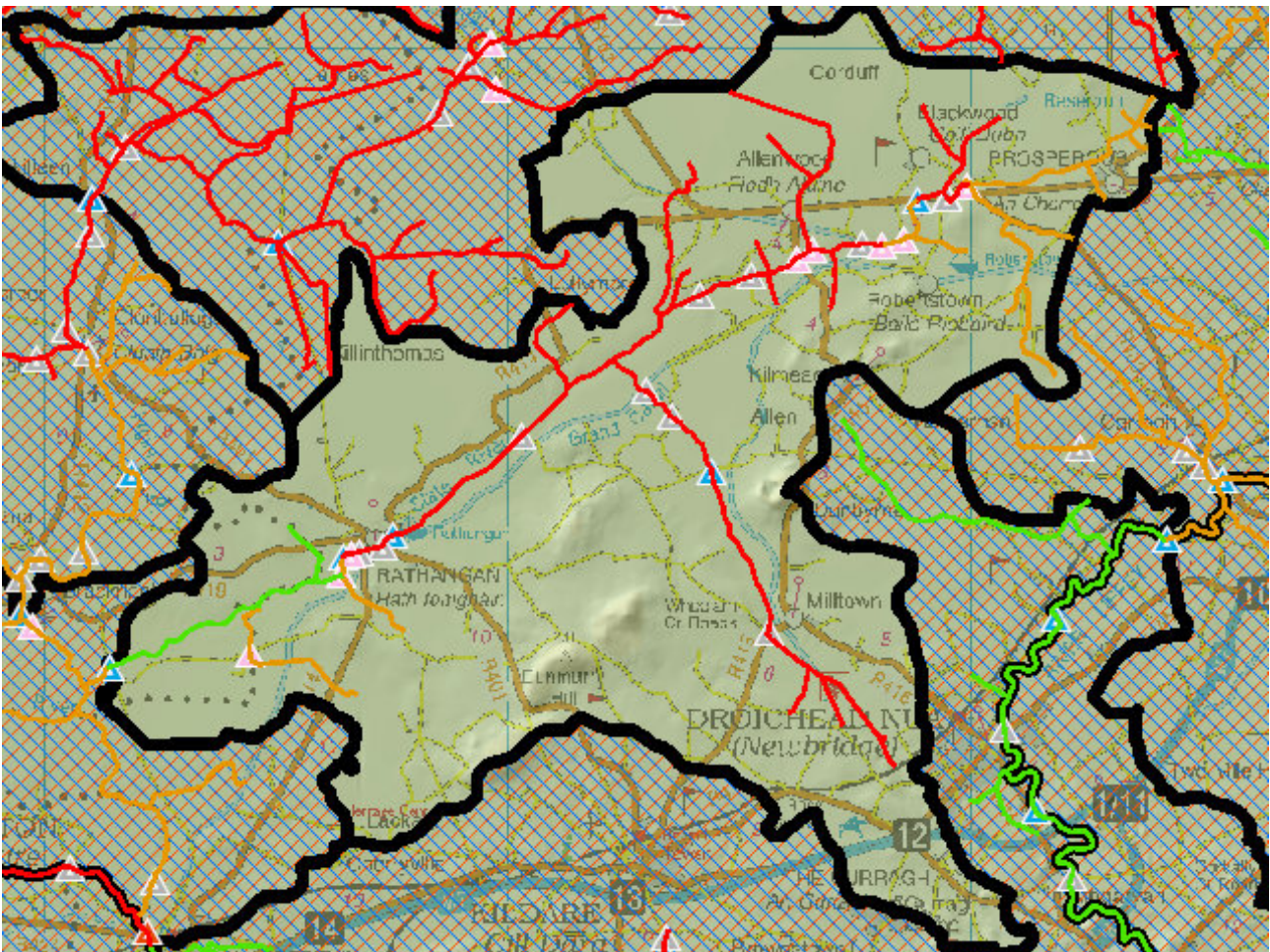
Evaluation of Priority Subcatchment Issues

Six of the river water bodies (Slate_020, 040, 050, 060, Cloncumber Stream_010 and Cloncumber_020) are AT RISK due to poor/moderate biological status and impacted chemistry (phosphate and TON). The remaining river water bodies are under REVIEW (Slate_010, Slate_030, Rathangan Demesne_010 and Kilnanto Lower_010) due to their unassigned status.

This subcatchment has four wastewater treatment plants and parts of Alien bog are within the Slate waterbody boundaries. These issues contribute to nutrient and sediment issues which are experienced throughout. There have been a number of wastewater treatment plant upgrades carried out in recent years, and more upgrades are ongoing or are planned in the near future. These upgrades have for the most part resulted in marked improvements in both chemistry and biology. Channelisation is also present throughout the subcatchment and may impact habitat conditions.

Local catchment assessments are also required for the unassigned water bodies so as to determine whether any issues exist.

Map Subcatchment Risk Map

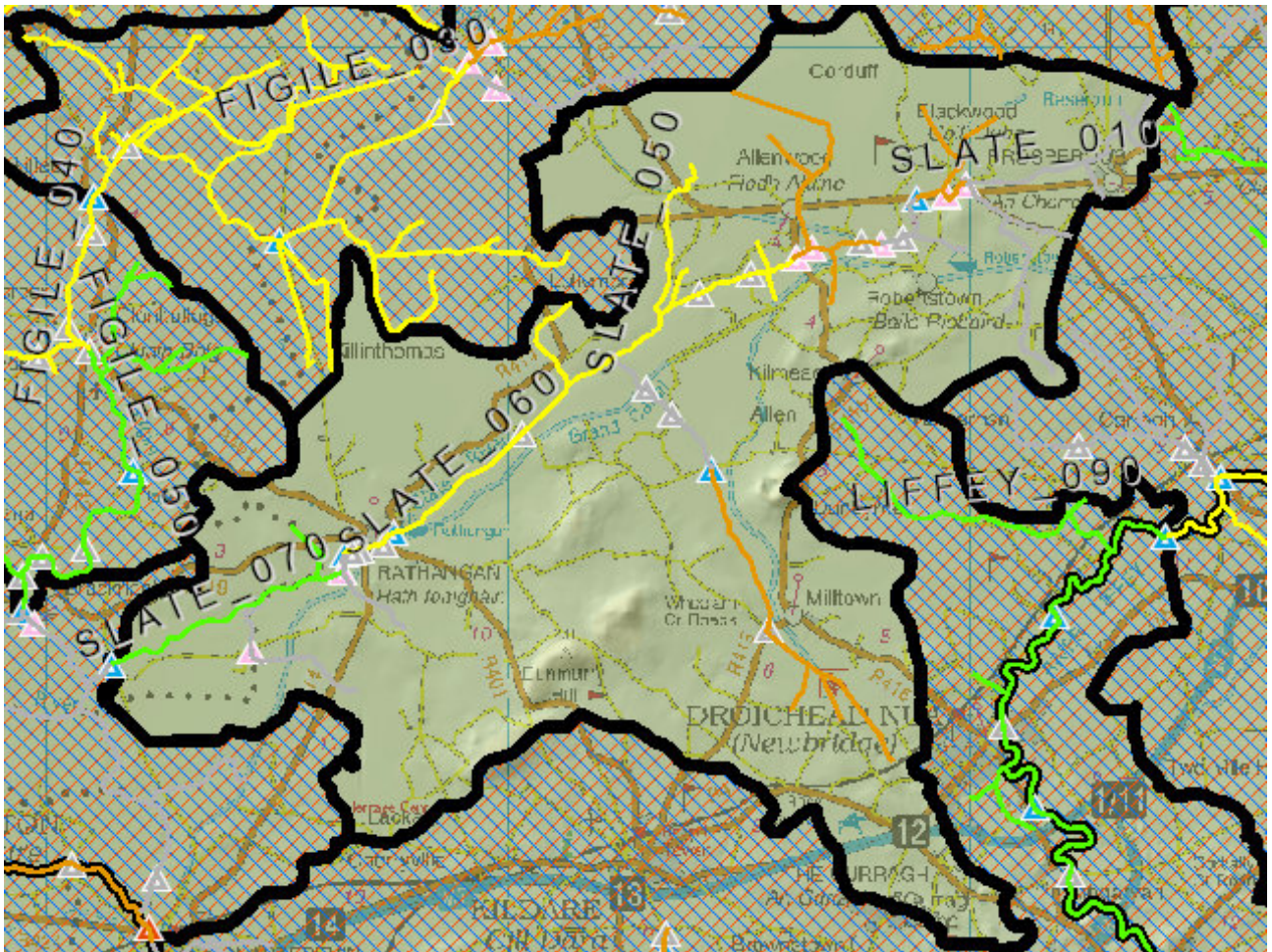


River And Lake Waterbodies: WFD Risk

The following river and lake waterbodies are in the subcatchment.

Code	Name	Type	WFD Risk	Significant Pressure
IE_SE_14C170200	CLONCUMBER STREAM_010	River	At risk	Yes
IE_SE_14C170250	CLONCUMBER STREAM_020	River	At risk	Yes
IE_SE_14S010020	SLATE_020	River	At risk	Yes
IE_SE_14S010050	SLATE_040	River	At risk	Yes
IE_SE_14S010100	SLATE_050	River	At risk	Yes
IE_SE_14S010210	SLATE_060	River	At risk	Yes
IE_SE_14K240670	KILNANTOGE_LOWER_ 010	River	Review	Yes
IE_SE_14R170990	RATHANGAN_DEMESN E_010	River	Review	Yes
IE_SE_14S010000	SLATE_010	River	Review	Yes
IE_SE_14S010036	SLATE_030	River	Review	Yes
IE_SE_14S010300	SLATE_070	River	Not at risk	No

Map Subcatchment Water Quality Status Map



River And Lake Waterbodies: Water Quality Status

The water quality status of river and lake waterbodies in the subcatchment is as follows.

Code	Name	Type	2007-09	2010-12	2010-15
IE_SE_14C170200	CLONCUMBER STREAM_010	River	Moderate	Moderate	Poor
IE_SE_14C170250	CLONCUMBER STREAM_020	River	Unassigned	Unassigned	Unassigned
IE_SE_14K240670	KILNANTOGE_LOWER_010	River	Unassigned	Unassigned	Unassigned
IE_SE_14R170990	RATHANGAN_DEMESNE_010	River	Unassigned	Unassigned	Unassigned
IE_SE_14S010000	SLATE_010	River	Unassigned	Unassigned	Unassigned
IE_SE_14S010020	SLATE_020	River	Poor	Poor	Poor
IE_SE_14S010036	SLATE_030	River	Unassigned	Unassigned	Unassigned
IE_SE_14S010050	SLATE_040	River	Poor	Poor	Poor
IE_SE_14S010100	SLATE_050	River	Unassigned	Moderate	Moderate
IE_SE_14S010210	SLATE_060	River	Poor	Moderate	Moderate
IE_SE_14S010300	SLATE_070	River	Moderate	Good	Good

Potentially Dependent Transitional and Coastal Waterbodies

The Transitional and Coastal waterbodies listed below intersect spatially with river and lake waterbodies in the subcatchment ...

Code	Name	Type	Local Authority	WFD Risk
------	------	------	-----------------	----------

Potentially Dependent Groundwater Waterbodies

The groundwaters listed below intersect spatially with river and lake waterbodies in the subcatchment ...

Code	Name	Type	Local Authority	WFD Risk
IE_EA_G_002	Trim	Groundwater	Meath County Council	At risk
IE_EA_G_008	Dublin	Groundwater	South Dublin County Council	Not at risk
IE_EA_G_017	Curragh Gravels East	Groundwater	Kildare County Council	Not at risk
IE_SE_G_048	Cushina	Groundwater	Offaly County Council	Not at risk
IE_SE_G_077	Kildare	Groundwater	Kildare County Council	Not at risk
IE_SE_G_106	GWDTE-Pollardstown Fen (SAC000396)	Groundwater	Kildare County Council	Not at risk
IE_SE_G_133	Curragh Gravels West	Groundwater	Kildare County Council	Not at risk
IE_SE_G_153	Bagenalstown Upper	Groundwater	Laois County Council	Review

Protected Areas intersecting River and Lake Waterbodies

The Protected Areas listed below intersect spatially with river and lake waterbodies in the subcatchment ...

Code	Name	Type	Waterbody Name	Association Type
IE0000391	Ballynafagh Bog SAC	SAC	SLATE_010	Overlapping / partly within Protected Area

Pressures

Below is a list of all significant pressures identified in the subcatchment.

Code	Name	WFD Risk	Pressure Category	Pressure Sub Category
IE_EA_G_002	Trim	At risk	Agriculture	Agriculture
IE_EA_G_002	Trim	At risk	Domestic Waste Water	Waste Water discharge
IE_SE_14C170200	CLONCUMBER STREAM_010	At risk	Hydromorphology	Dams, barriers, locks, weirs
IE_SE_14C170200	CLONCUMBER STREAM_010	At risk	Hydromorphology	Channelisation
IE_SE_14C170250	CLONCUMBER STREAM_020	At risk	Hydromorphology	Dams, barriers, locks, weirs
IE_SE_14C170250	CLONCUMBER STREAM_020	At risk	Hydromorphology	Channelisation
IE_SE_14S010020	SLATE_020	At risk	Agriculture	Pasture
IE_SE_14S010020	SLATE_020	At risk	Urban Waste Water	Agglomeration PE of 1,001 to 2,000
IE_SE_14S010050	SLATE_040	At risk	Extractive Industry	Peat
IE_SE_14S010100	SLATE_050	At risk	Extractive Industry	Peat
IE_SE_14S010100	SLATE_050	At risk	Hydromorphology	Channelisation
IE_SE_14S010210	SLATE_060	At risk	Urban Run-off	Diffuse Sources Run-Off
IE_SE_14K240670	KILNANTOGE_LOWER_010	Review	Agriculture	Pasture
IE_SE_14K240670	KILNANTOGE_LOWER_010	Review	Hydromorphology	Channelisation
IE_SE_14K240670	KILNANTOGE_LOWER_010	Review	Agriculture	Arable
IE_SE_14R170990	RATHANGAN_DEMESNE_010	Review	Hydromorphology	Channelisation
IE_SE_14R170990	RATHANGAN_DEMESNE_010	Review	Urban Waste Water	Agglomeration PE of 2,001 to 10,000
IE_SE_14S010000	SLATE_010	Review	Urban Waste Water	Agglomeration PE > 10,000
IE_SE_14S010000	SLATE_010	Review	Extractive Industry	Peat
IE_SE_14S010036	SLATE_030	Review	Agriculture	Pasture
IE_SE_14S010036	SLATE_030	Review	Forestry	Forestry
IE_SE_G_153	Bagenalstown Upper	Review	Anthropogenic Pressures	Unknown

Further Characterisation Actions

The following further characterisation actions have been identified. These are necessary to help understand more fully issues in the subcatchment and their likely cause.

Code	Name	Action	Responsible Organisation
IE_SE_14S010050	SLATE_040	IA7 Multiple Sources in Multiple Areas	Kildare County Council
IE_SE_14S010210	SLATE_060	IA6 Multiple Sources in Large Urban Area	Kildare County Council
IE_SE_14R170990	RATHANGAN_DEMESNE_010	IA3 Determination of Water Quality (unassigned waterbody)	Kildare County Council
IE_SE_14S010000	SLATE_010	IA3 Determination of Water Quality (unassigned waterbody)	Kildare County Council
IE_SE_14S010036	SLATE_030	IA3 Determination of Water Quality (unassigned waterbody)	Kildare County Council
IE_SE_14S010210	SLATE_060	IA1 Provision of Information	Kildare County Council
IE_SE_14C170200	CLONCUMBER STREAM_010	IA5 Multiple Sources in defined rural area (1km) or waterbody or rural town	Kildare County Council
IE_SE_14K240670	KILNANTOGE_LOWER_010	IA3 Determination of Water Quality (unassigned waterbody)	Kildare County Council
IE_SE_14S010100	SLATE_050	IA7 Multiple Sources in Multiple Areas	Kildare County Council
IE_SE_14C170250	CLONCUMBER STREAM_020	IA5 Multiple Sources in defined rural area (1km) or waterbody or rural town	Kildare County Council
IE_SE_14S010020	SLATE_020	IA1 Provision of Information	Kildare County Council