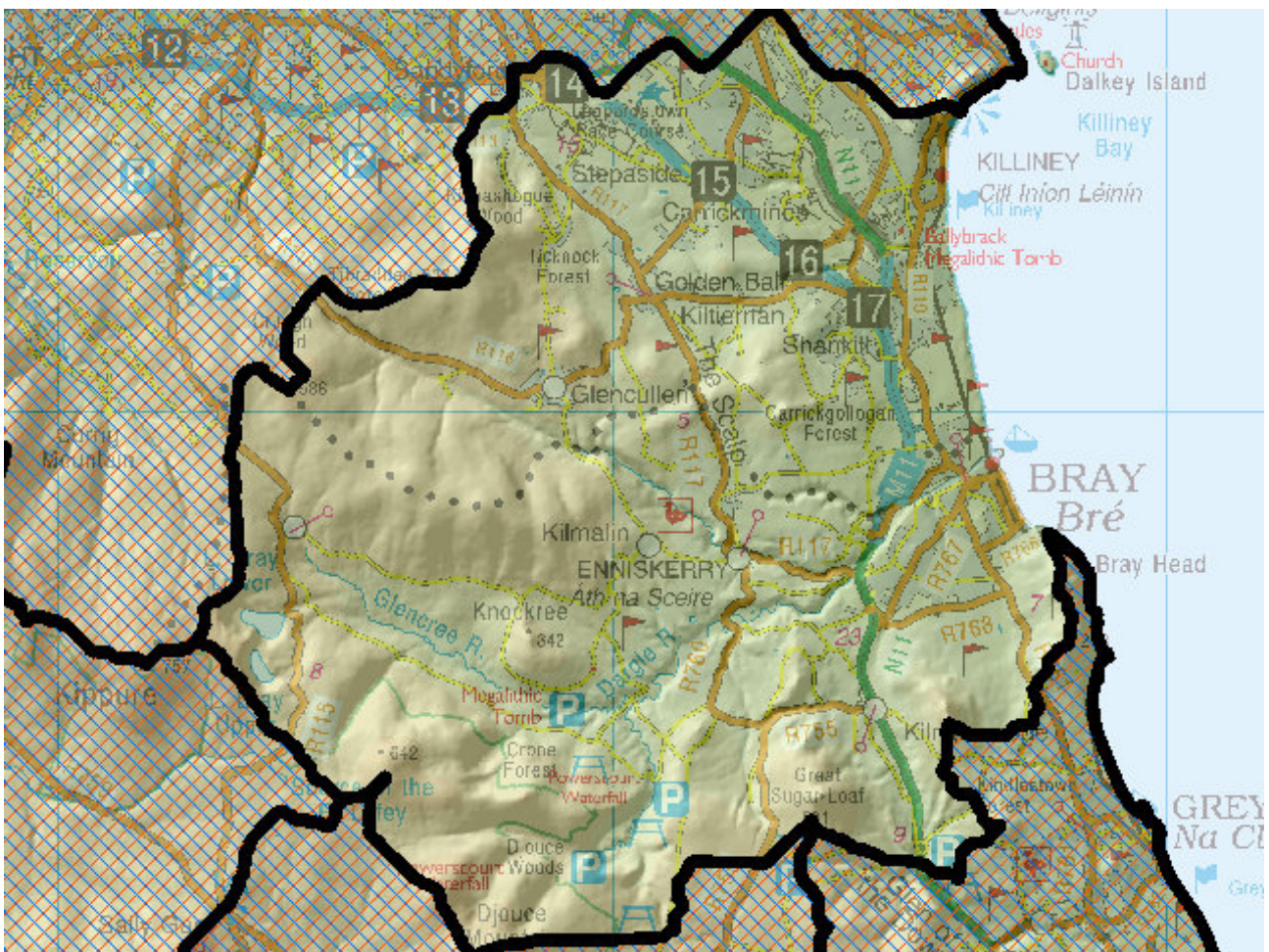


WFD Cycle 2

Catchment Ovoca-Vartry

Subcatchment Dargle_SC_010

Code 10_5



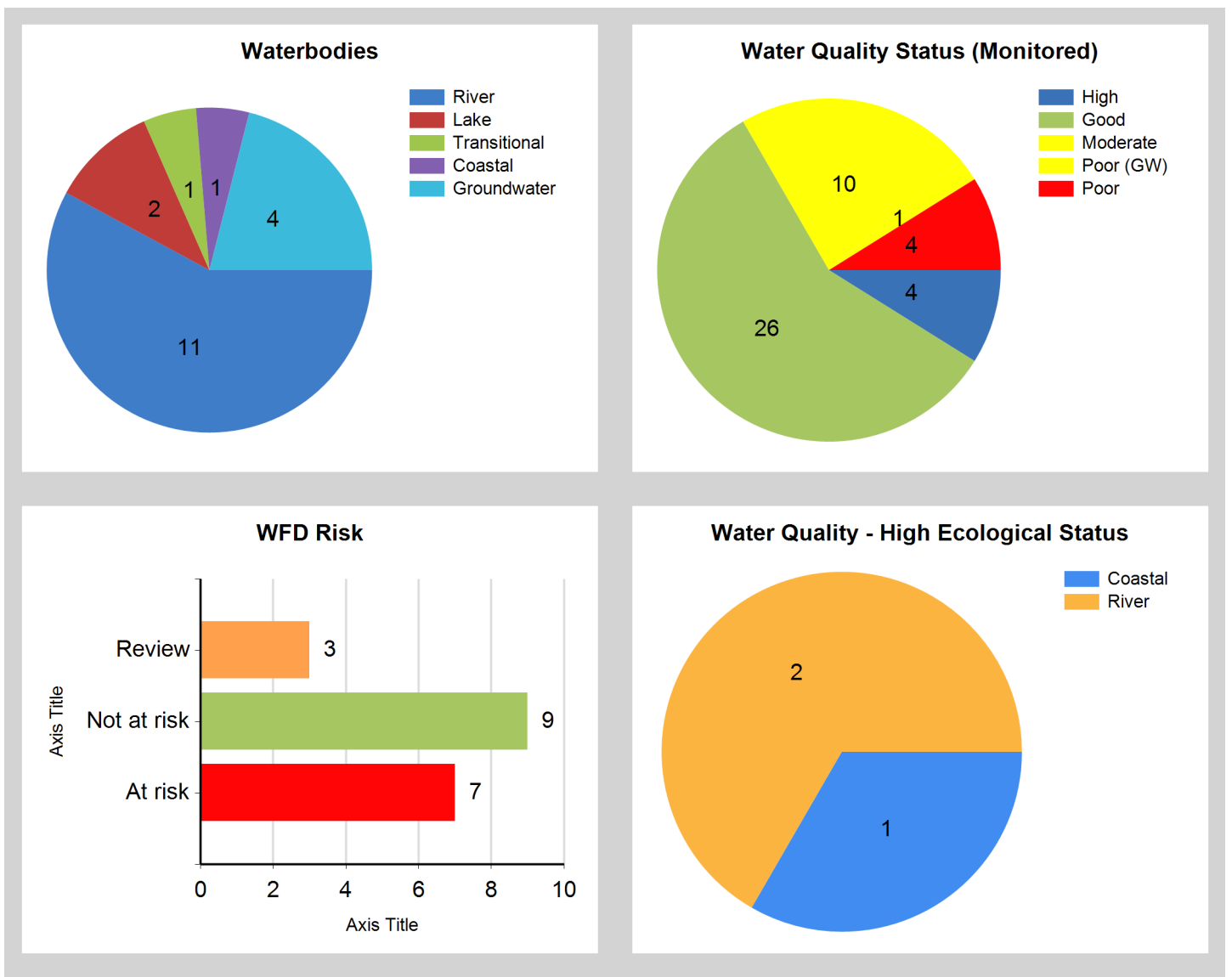
© Ordnance Survey Ireland. All rights reserved. Licence Number EN 0059208

Generated on: 02 Jan 2019

Assessment Purpose

This assessment has been produced as part of the national characterisation programme undertaken for the second cycle of Water Framework Directive river basin management planning. It has been led by the EPA, with input from Local Authorities and other public bodies, and with support from RPS consultants.

The characterisation assessments are automatically generated from the information stored in the WFD Application. They are based on information available to the end of 2015 but may be subject to change until the final 2018-21 river basin management plan is published. Users should ensure that they have the most up to date information by downloading the latest assessment before use.

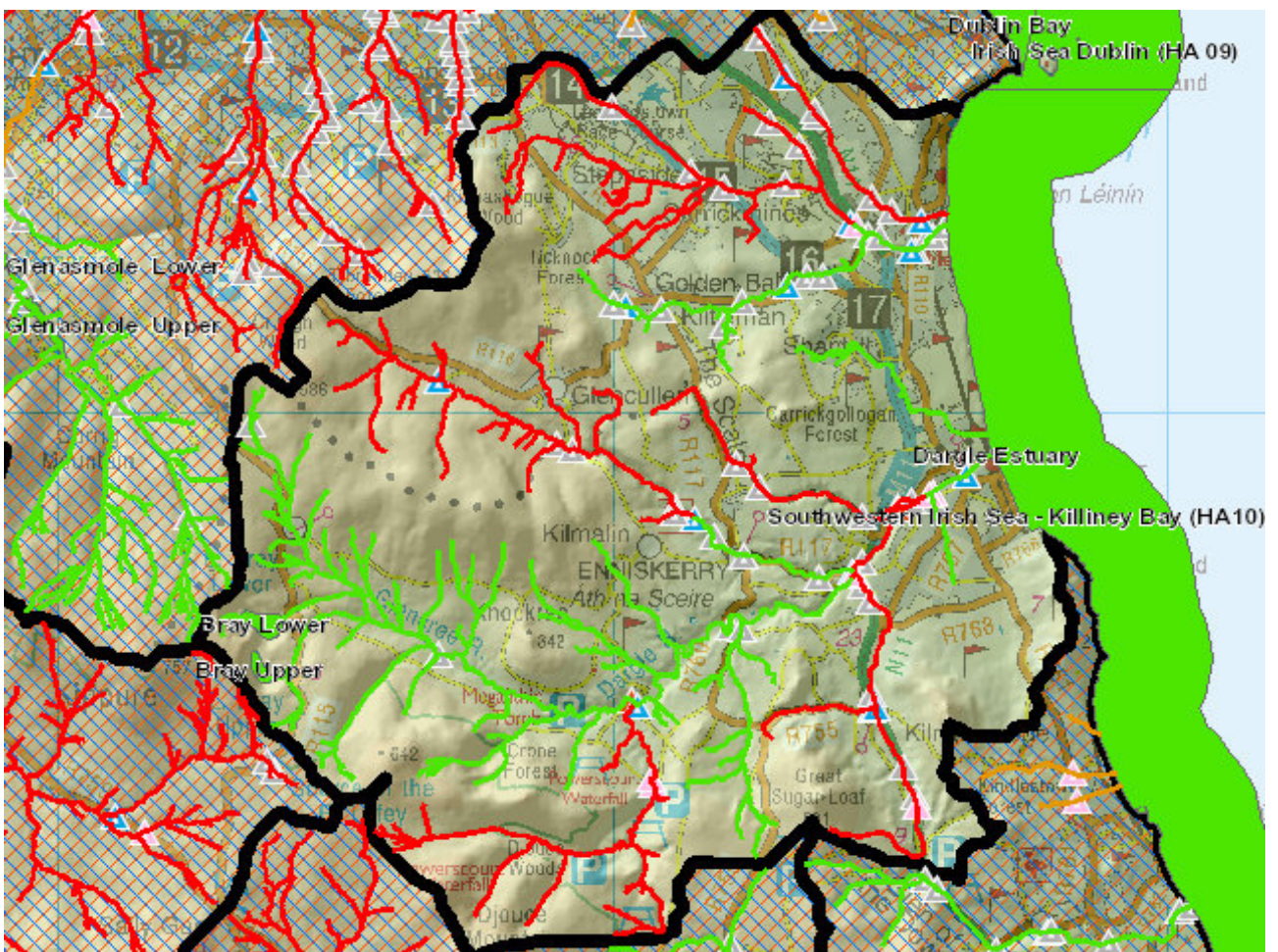


Evaluation of Priority Subcatchment Issues

Six out of eleven river water bodies within this subcatchment are AT RISK: Dargle_010 due to failing to meet its High Ecological Status objective; Carrickmines Stream_010 and Kilmacanoge_010 due to Moderate biological status (driven by invertebrate status); Dargle_030 due to Poor biological status (driven by invertebrate status as fish status was Good); Kill of the Grange Stream_010 due to Poor biological status (invertebrate status) and elevated phosphate and ammonia. Glencullen_010 is failing to meet its High Ecological Status (HES) objective.

Urban diffuse is likely to be the significant pressure within Carrickmines Stream_010, Kilmacanoge_010 and Kill of the Grange Stream_010. Combined sewer overflows and urban waste water treatment were also identified as significant pressures within Kilmacanoge_010 and Kill of the Grange Stream_010, respectively. Hydromorphological issues related to the modification of the river channel was evident due to culverts within Kill of the Grange Stream_010 and flood protection within Dargle_030. Hydromorphological status (Good) within the downstream station of Dargle_010 resulted in the water body being downgraded to Good ecological status - siltation is an issue as a result of excessive bank erosion (bank protection upstream of the monitoring site). There is a natural barrier on the Dargle_010 which is driving fish status. Urban waste water (Enniskerry) is a significant pressure on Dargle_030.

Map Subcatchment Risk Map

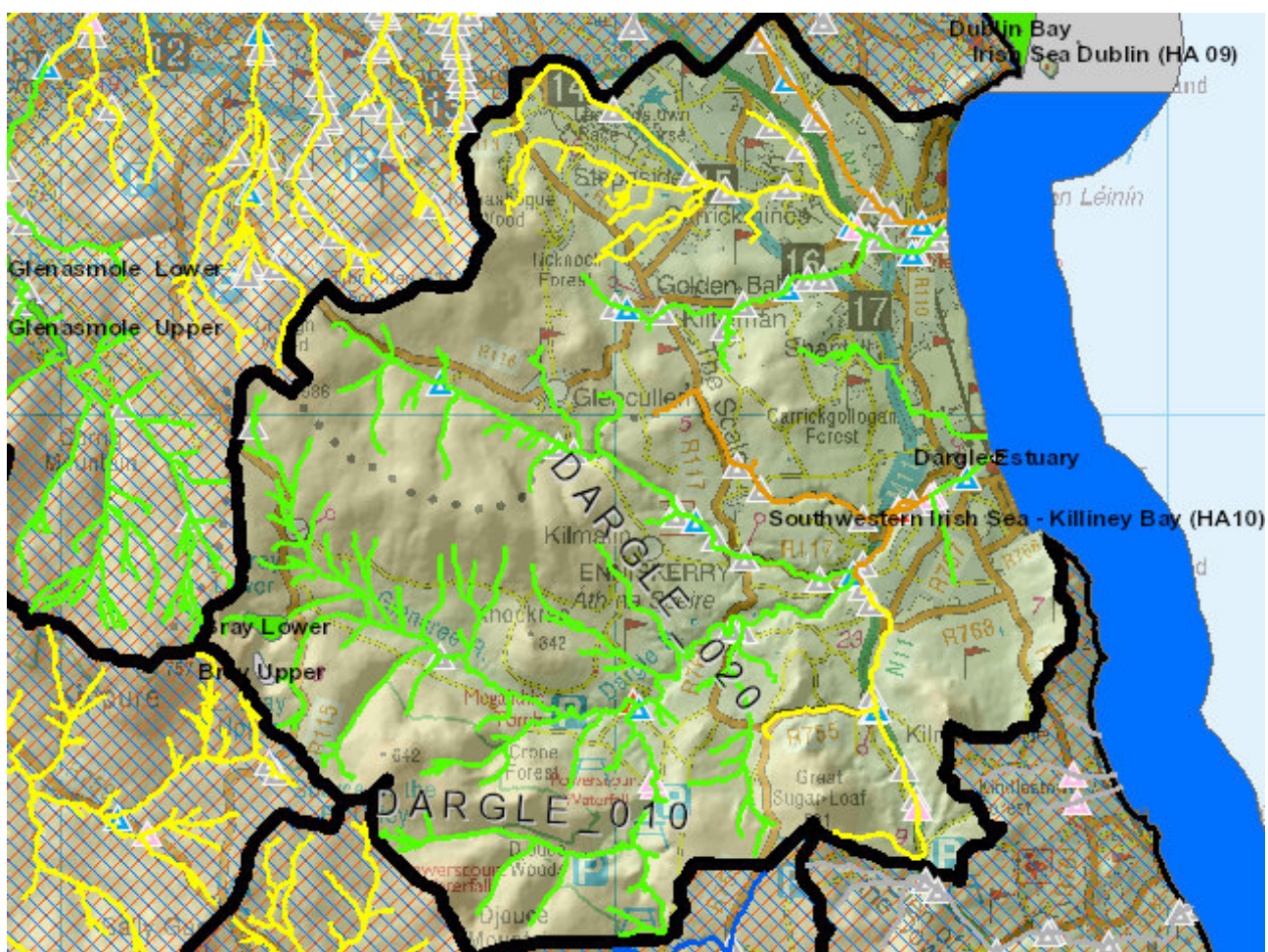


River And Lake Waterbodies: WFD Risk

The following river and lake waterbodies are in the subcatchment.

Code	Name	Type	WFD Risk	Significant Pressure
IE_EA_10C040350	CARRICKMINES STREAM_010	River	At risk	Yes
IE_EA_10D010010	DARGLE_010	River	At risk	Yes
IE_EA_10D010250	DARGLE_030	River	At risk	Yes
IE_EA_10G020300	GLENCULLEN_010	River	At risk	Yes
IE_EA_10K020200	KILL OF THE GRANGE STREAM_010	River	At risk	Yes
IE_EA_10K030600	KILMACANOGE_010	River	At risk	Yes
IE_EA_10S010600	SHANGANAGH_010	River	Not at risk	Yes

Map Subcatchment Water Quality Status Map



River And Lake Waterbodies: Water Quality Status

The water quality status of river and lake waterbodies in the subcatchment is as follows.

Code	Name	Type	2007-09	2010-12	2010-15
IE_EA_10_28	Bray Lower	Lake	Good	Moderate	Good
IE_EA_10_23	Bray Upper	Lake	Unassigned	Unassigned	Unassigned
IE_EA_10C040350	CARRICKMINES STREAM_010	River	Moderate	Moderate	Moderate
IE_EA_10D010010	DARGLE_010	River	High	Good	Good
IE_EA_10D010100	DARGLE_020	River	Good	Good	Good
IE_EA_10D010250	DARGLE_030	River	Moderate	Good	Poor
IE_EA_10D010300	DARGLE_040	River	Unassigned	Unassigned	Good
IE_EA_10G010200	GLENCREE_010	River	Moderate	Good	Good
IE_EA_10G020300	GLENCULLEN_010	River	Good	High	Good
IE_EA_10G020500	GLENCULLEN_020	River	Good	Good	Good
IE_EA_10K020200	KILL OF THE GRANGE STREAM_010	River	Poor	Poor	Poor
IE_EA_10K030600	KILMACANOGE_010	River	Moderate	Moderate	Moderate
IE_EA_10S010600	SHANGANAGH_010	River	Moderate	Good	Good

Potentially Dependent Transitional and Coastal Waterbodies

The Transitional and Coastal waterbodies listed below intersect spatially with river and lake waterbodies in the subcatchment ...

Code	Name	Type	Local Authority	WFD Risk
IE_EA_100_0000	Southwestern Irish Sea - Killiney Bay (HA10)	Coastal	Wicklow County Council	Not at risk
IE_EA_110_0100	Dargle Estuary	Transitional	Wicklow County Council	Review

Potentially Dependent Groundwater Waterbodies

The groundwaters listed below intersect spatially with river and lake waterbodies in the subcatchment ...

Code	Name	Type	Local Authority	WFD Risk
IE_EA_G_003	Kilcullen	Groundwater	Wicklow County Council	Not at risk
IE_EA_G_038	Enniskerry Gravels	Groundwater	Wicklow County Council	Review
IE_EA_G_076	Wicklow	Groundwater	Wicklow County Council	Review
IE_EA_G_091	Industrial Facility (P0019-02)	Groundwater	Dun Laoghaire Rathdown County Council	At risk

Protected Areas intersecting River and Lake Waterbodies

The Protected Areas listed below intersect spatially with river and lake waterbodies in the subcatchment ...

Code	Name	Type	Waterbody Name	Association Type
IEPA1_EA_10G020300	GLENCULLEN_010	Drinking Water	GLENCULLEN_010	Within Protected Area
IEPA1_EA_10S010600	SHANGANAGH_010	Drinking Water	SHANGANAGH_010	Within Protected Area
IEPA5D0010	River Dargle	Salmonid	DARGLE_010	Overlapping / partly within Protected Area
IEPA5D0010	River Dargle	Salmonid	DARGLE_020	Overlapping / partly within Protected Area
IEPA5D0010	River Dargle	Salmonid	DARGLE_030	Overlapping / partly within Protected Area
IEPA5D0010	River Dargle	Salmonid	DARGLE_040	Overlapping / partly within Protected Area

Pressures

Below is a list of all significant pressures identified in the subcatchment.

Code	Name	WFD Risk	Pressure Category	Pressure Sub Category
IE_EA_10C040350	CARRICKMINES STREAM_010	At risk	Urban Run-off	Diffuse Sources Run-Off
IE_EA_10D010010	DARGLE_010	At risk	Hydromorphology	Dams, barriers, locks, weirs
IE_EA_10D010010	DARGLE_010	At risk	Hydromorphology	Channelisation
IE_EA_10D010250	DARGLE_030	At risk	Hydromorphology	Channelisation
IE_EA_10D010250	DARGLE_030	At risk	Urban Waste Water	Agglomeration PE of 2,001 to 10,000
IE_EA_10G020300	GLENCULLEN_010	At risk	Forestry	Forestry
IE_EA_10K020200	KILL OF THE GRANGE STREAM_010	At risk	Urban Run-off	Diffuse Sources Run-Off
IE_EA_10K020200	KILL OF THE GRANGE STREAM_010	At risk	Urban Waste Water	Combined Sewer Overflows
IE_EA_10K020200	KILL OF THE GRANGE STREAM_010	At risk	Hydromorphology	Culverts
IE_EA_10K030600	KILMACANOGE_010	At risk	Urban Run-off	Diffuse Sources Run-Off
IE_EA_10K030600	KILMACANOGE_010	At risk	Urban Waste Water	Combined Sewer Overflows
IE_EA_G_091	Industrial Facility (P0019-02)	At risk	Industry	IPC
IE_EA_110_0100	Dargle Estuary	Review	Anthropogenic Pressures	Unknown
IE_EA_G_038	Enniskerry Gravels	Review	Anthropogenic Pressures	Unknown
IE_EA_G_076	Wicklow	Review	Anthropogenic Pressures	Unknown

Further Characterisation Actions

The following further characterisation actions have been identified. These are necessary to help understand more fully issues in the subcatchment and their likely cause.

Code	Name	Action	Responsible Organisation
IE_EA_10G020300	GLENCULLEN_010	IA8 High status RWB pressures	Wicklow County Council
IE_EA_10D010250	DARGLE_030	IA2 Point Source Desk Based Assessment	Wicklow County Council
IE_EA_10K030600	KILMACANOGE_010	IA6 Multiple Sources in Large Urban Area	Wicklow County Council
IE_EA_10K030600	KILMACANOGE_010	IA7 Multiple Sources in Multiple Areas	Wicklow County Council
IE_EA_10C040350	CARRICKMINES STREAM_010	IA6 Multiple Sources in Large Urban Area	Dun Laoghaire Rathdown County Council
IE_EA_10D010010	DARGLE_010	IA8 High status RWB pressures	Environmental Protection Agency
IE_EA_10K020200	KILL OF THE GRANGE STREAM_010	IA1 Provision of Information	Environmental Protection Agency
IE_EA_10K020200	KILL OF THE GRANGE STREAM_010	IA6 Multiple Sources in Large Urban Area	Dun Laoghaire Rathdown County Council
IE_EA_10D010010	DARGLE_010	IA1 Provision of Information	Inland Fisheries Ireland