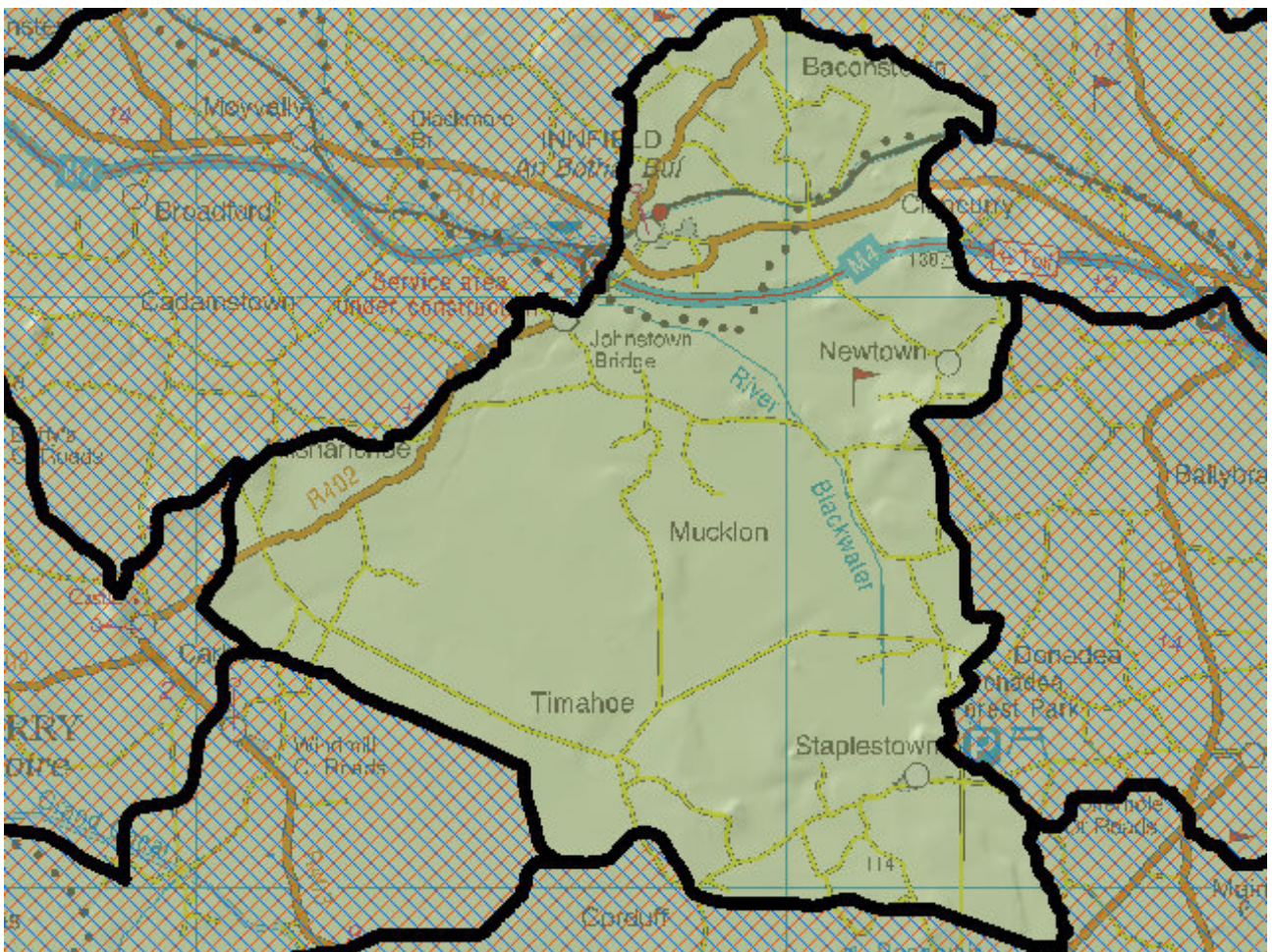


# WFD Cycle 2

Catchment Boyne

Subcatchment Blackwater  
[Longwood]\_SC\_010

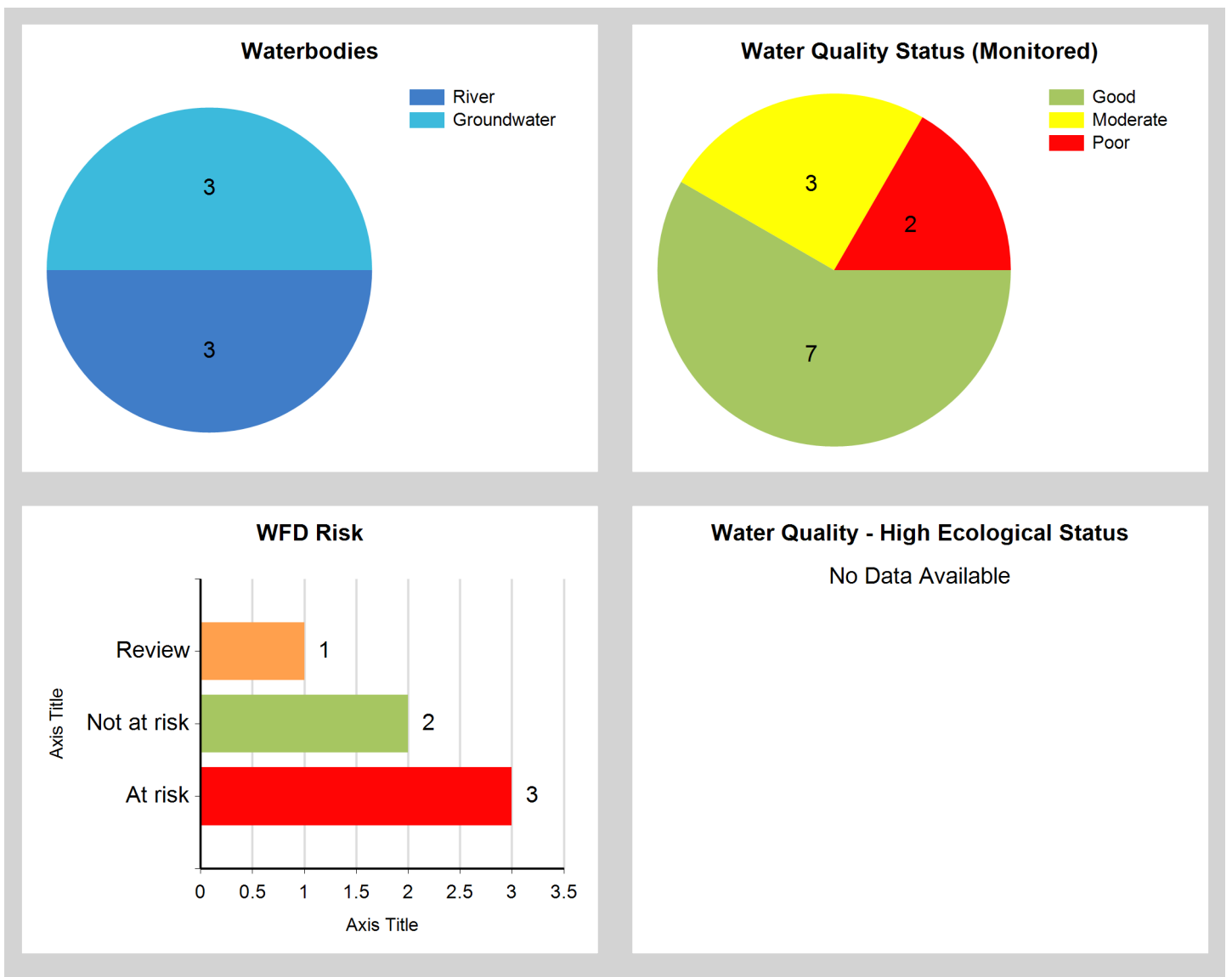
Code 07\_6



## Assessment Purpose

This assessment has been produced as part of the national characterisation programme undertaken for the second cycle of Water Framework Directive river basin management planning. It has been led by the EPA, with input from Local Authorities and other public bodies, and with support from RPS consultants.

The characterisation assessments are automatically generated from the information stored in the WFD Application. They are based on information available to the end of 2015 but may be subject to change until the final 2018-21 river basin management plan is published. Users should ensure that they have the most up to date information by downloading the latest assessment before use.

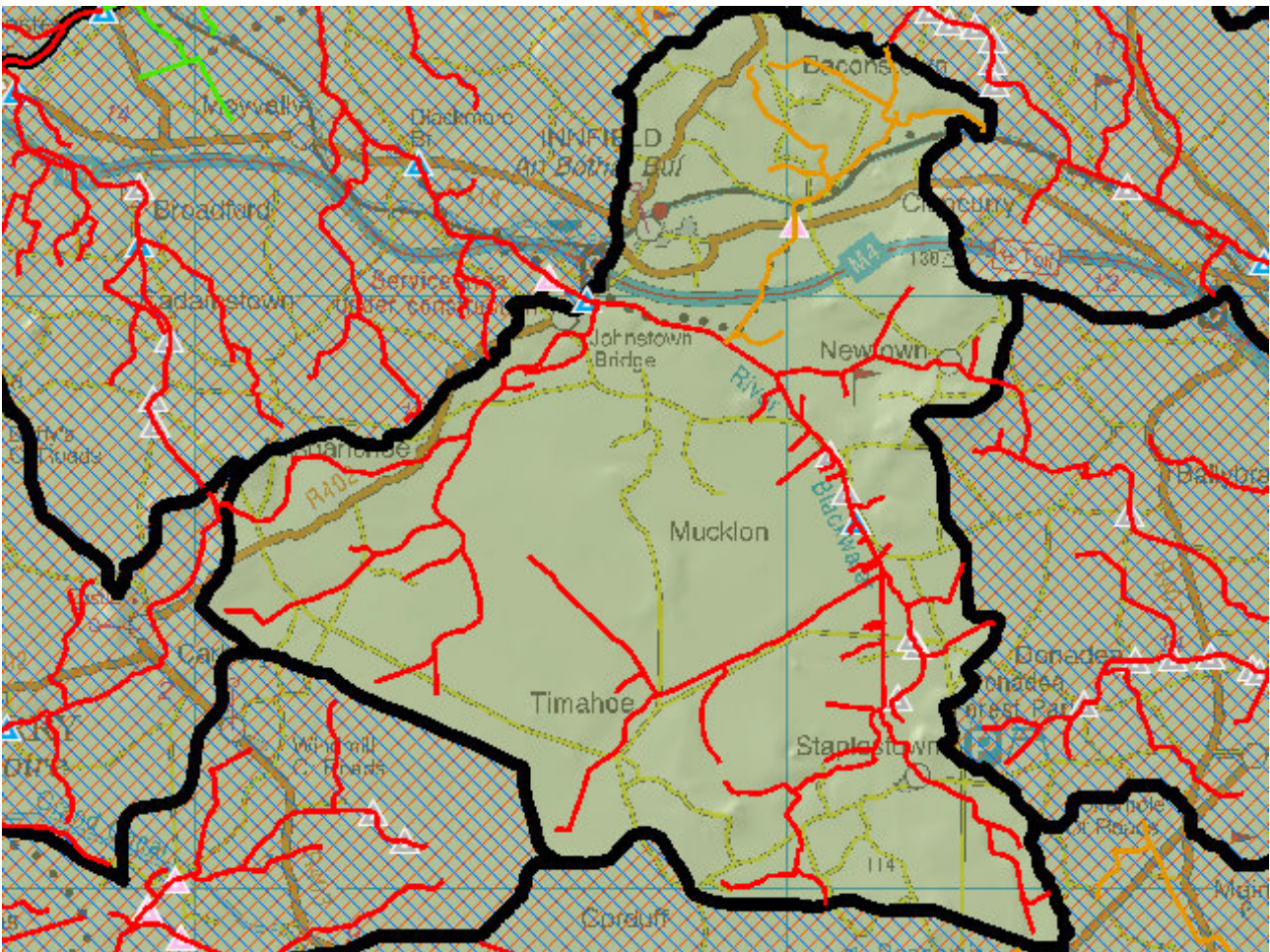


## Evaluation of Priority Subcatchment Issues

Two out of the three river water bodies in this subcatchment are At Risk: Blackwater (Longwood)\_010 due to Poor ecological status and Blackwater (Longwood)\_020 due to Moderate ecological status . Biological status was driven by invertebrates for both water bodies. The significant issues and pressures are unknown in Blackwater (Longwood)\_010. Nutrients (ammonia) are the significant issue in Blackwater (Longwood)\_020 but the significant pressures are also unknown in this water body.

Cloncurry\_010 is under Review due to its unassigned ecological status.

## Map Subcatchment Risk Map

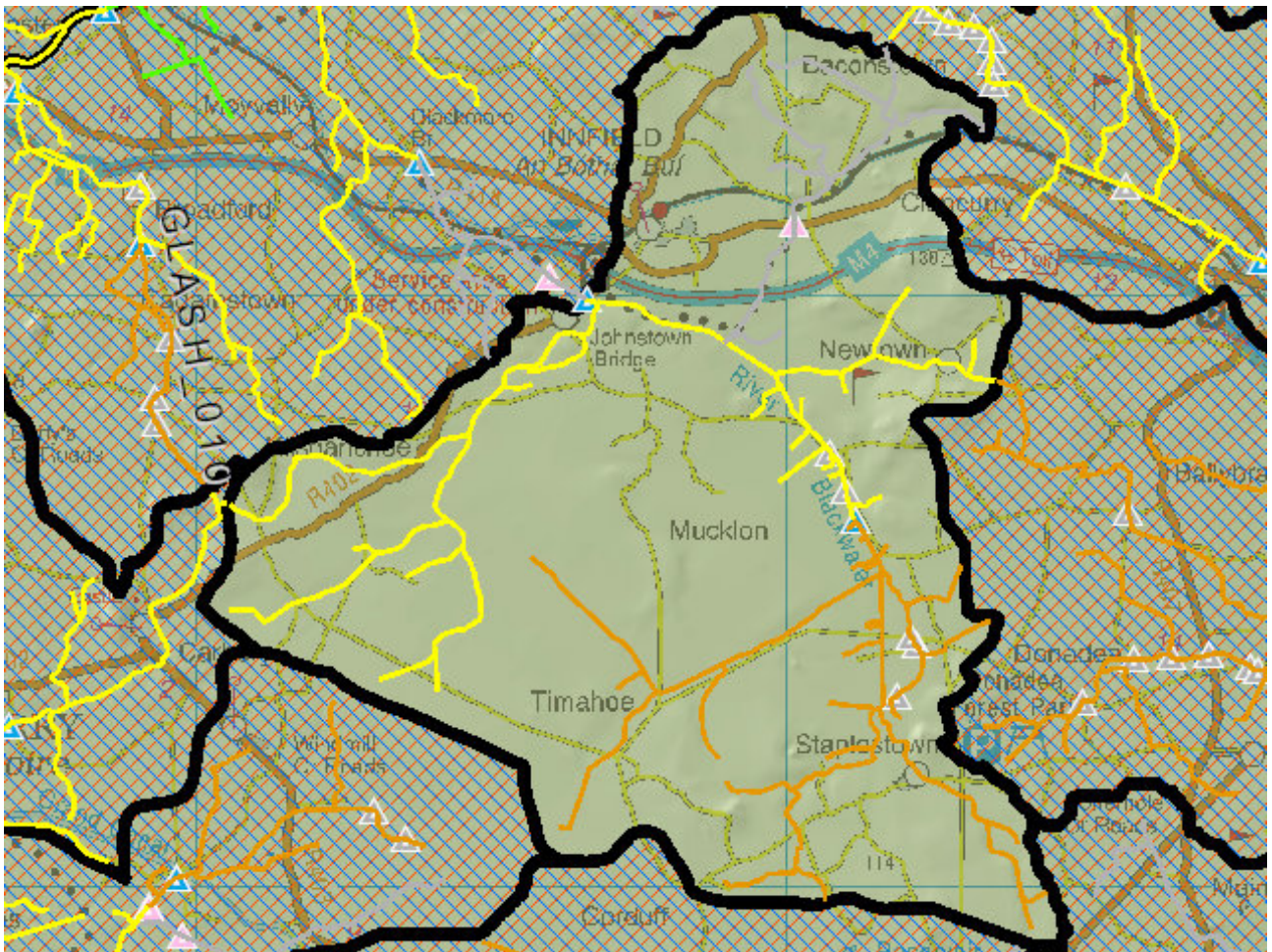


## River And Lake Waterbodies: WFD Risk

The following river and lake waterbodies are in the subcatchment.

Code	Name	Type	WFD Risk	Significant Pressure
IE_EA_07B020060	BLACKWATER (LONGWOOD)_010	River	At risk	Yes
IE_EA_07B020100	BLACKWATER (LONGWOOD)_020	River	At risk	Yes
IE_EA_07C220690	CLONCURRY_010	River	Review	Yes

## Map Subcatchment Water Quality Status Map



## River And Lake Waterbodies: Water Quality Status

The water quality status of river and lake waterbodies in the subcatchment is as follows.

Code	Name	Type	2007-09	2010-12	2010-15
IE_EA_07B020060	BLACKWATER (LONGWOOD)_010	River	Good	Poor	Poor
IE_EA_07B020100	BLACKWATER (LONGWOOD)_020	River	Moderate	Moderate	Moderate
IE_EA_07C220690	CLONCURRY_010	River	Unassigned	Unassigned	Unassigned

## Potentially Dependent Transitional and Coastal Waterbodies

The Transitional and Coastal waterbodies listed below intersect spatially with river and lake waterbodies in the subcatchment ...

Code	Name	Type	Local Authority	WFD Risk
------	------	------	-----------------	----------

## Potentially Dependent Groundwater Waterbodies

The groundwaters listed below intersect spatially with river and lake waterbodies in the subcatchment ...

Code	Name	Type	Local Authority	WFD Risk
IE_EA_G_002	Trim	Groundwater	Meath County Council	At risk
IE_EA_G_008	Dublin	Groundwater	South Dublin County Council	Not at risk
IE_SE_G_077	Kildare	Groundwater	Kildare County Council	Not at risk

## Protected Areas intersecting River and Lake Waterbodies

The Protected Areas listed below intersect spatially with river and lake waterbodies in the subcatchment ...

Code	Name	Type	Waterbody Name	Association Type
------	------	------	----------------	------------------

## Pressures

Below is a list of all significant pressures identified in the subcatchment.

Code	Name	WFD Risk	Pressure Category	Pressure Sub Category
IE_EA_07B020060	BLACKWATER (LONGWOOD)_010	At risk	Anthropogenic Pressures	Unknown
IE_EA_07B020100	BLACKWATER (LONGWOOD)_020	At risk	Anthropogenic Pressures	Unknown
IE_EA_G_002	Trim	At risk	Agriculture	Agriculture
IE_EA_G_002	Trim	At risk	Domestic Waste Water	Waste Water discharge
IE_EA_07C220690	CLONCURRY_010	Review	Anthropogenic Pressures	Unknown

## Further Characterisation Actions

The following further characterisation actions have been identified. These are necessary to help understand more fully issues in the subcatchment and their likely cause.

<b>Code</b>	<b>Name</b>	<b>Action</b>	<b>Responsible Organisation</b>
IE_EA_07B020100	BLACKWATER (LONGWOOD)_020	IA7 Multiple Sources in Multiple Areas	Kildare County Council
IE_EA_07C220690	CLONCURRY_010	IA3 Determination of Water Quality (unassigned waterbody)	Meath County Council
IE_EA_07B020060	BLACKWATER (LONGWOOD)_010	IA7 Multiple Sources in Multiple Areas	Kildare County Council