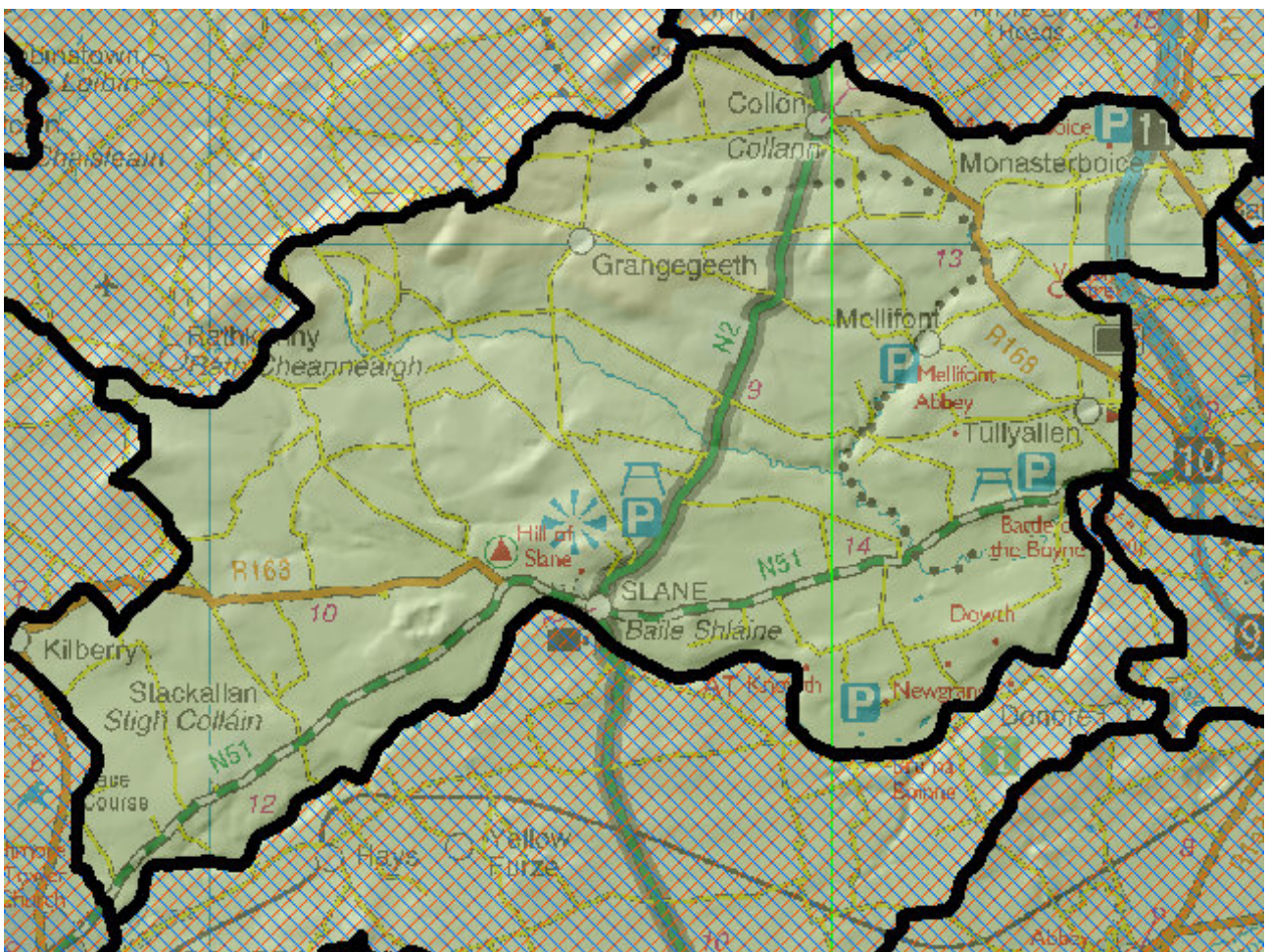


# WFD Cycle 2

Catchment Boyne

Subcatchment Boyne\_SC\_120

Code 07\_15



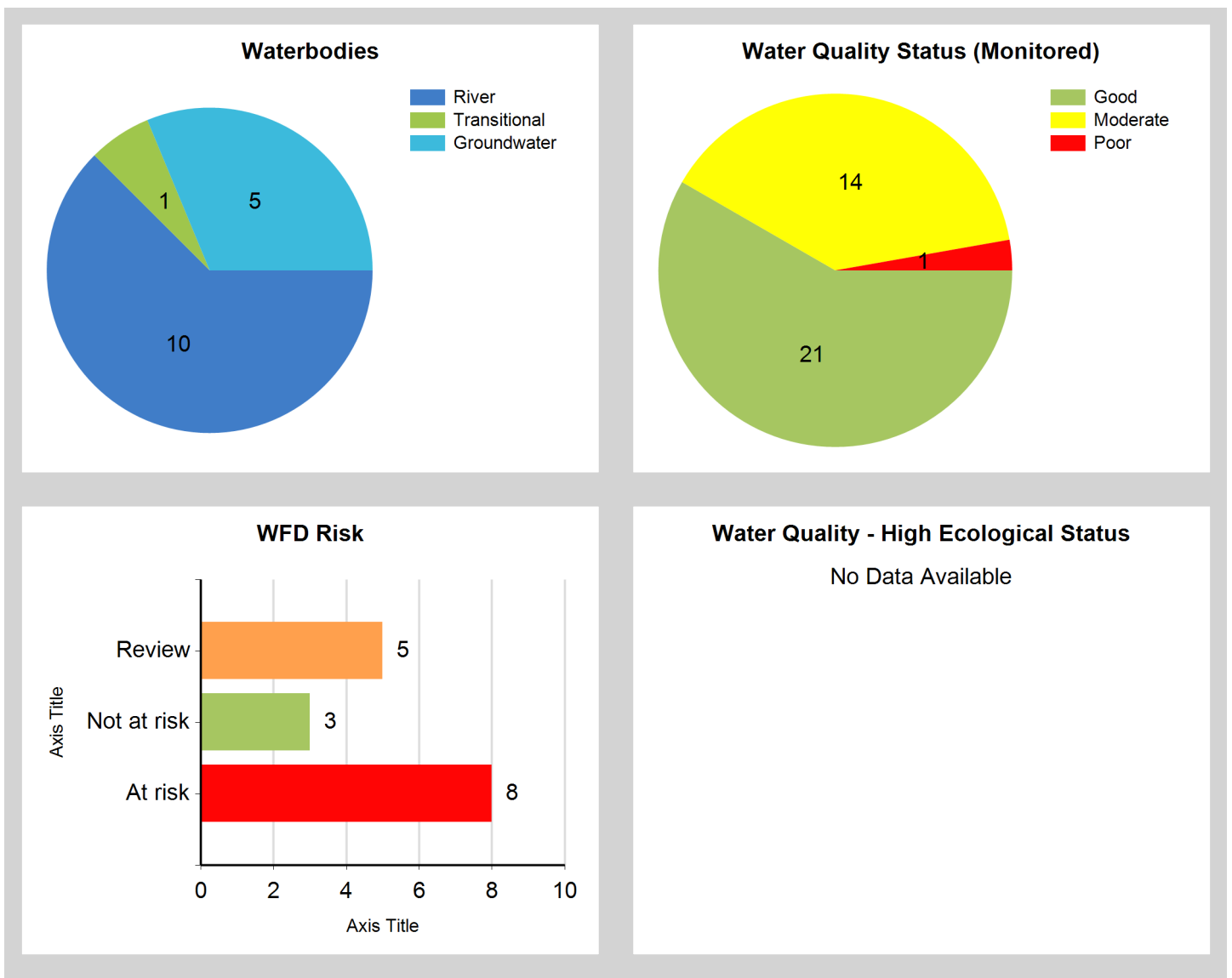
© Ordnance Survey Ireland. All rights reserved. Licence Number EN 0059208

Generated on: 19 Dec 2018

## Assessment Purpose

This assessment has been produced as part of the national characterisation programme undertaken for the second cycle of Water Framework Directive river basin management planning. It has been led by the EPA, with input from Local Authorities and other public bodies, and with support from RPS consultants.

The characterisation assessments are automatically generated from the information stored in the WFD Application. They are based on information available to the end of 2015 but may be subject to change until the final 2018-21 river basin management plan is published. Users should ensure that they have the most up to date information by downloading the latest assessment before use.

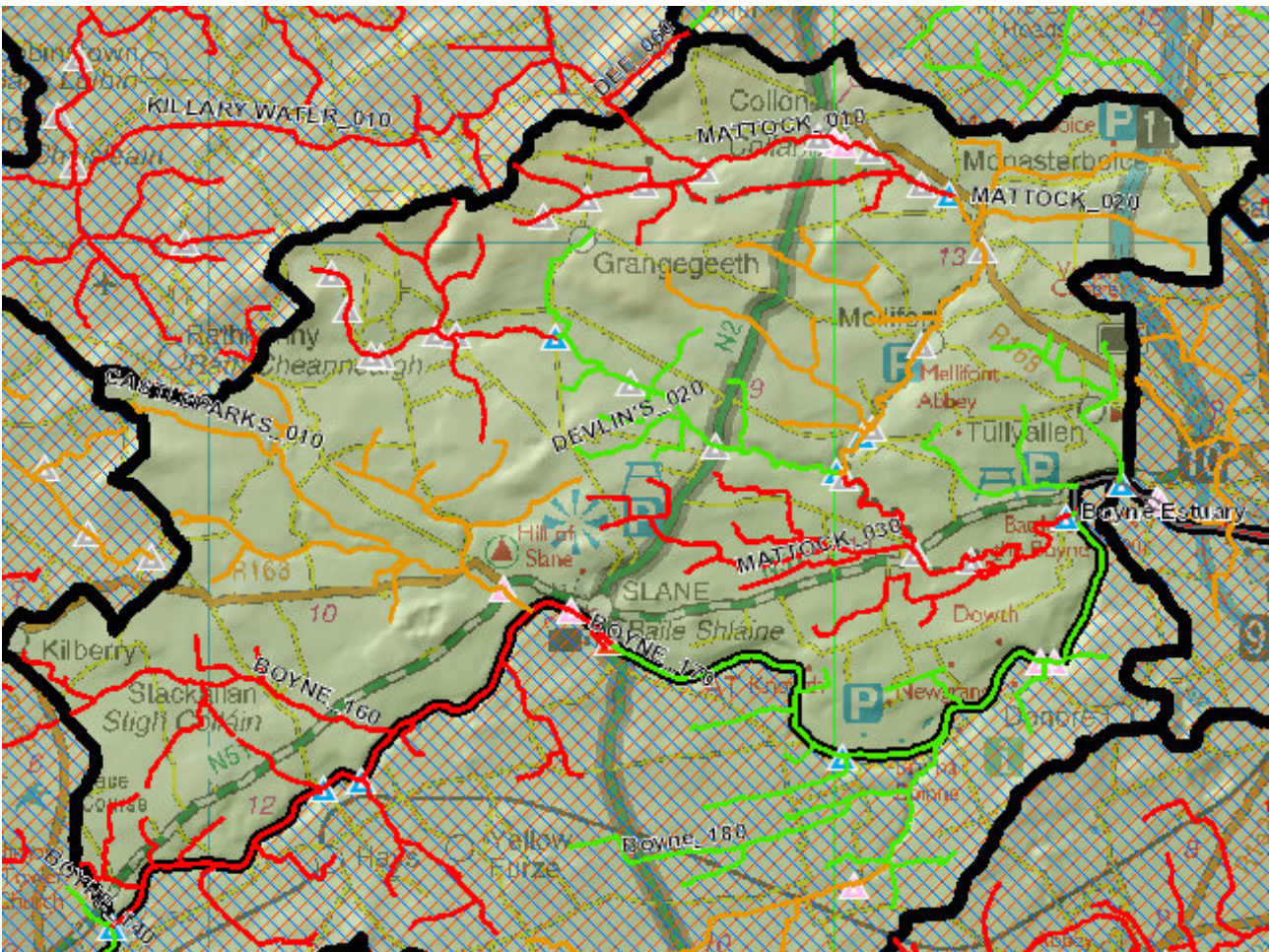


## Evaluation of Priority Subcatchment Issues

Seven out of ten river water bodies are AT RISK: Boyne\_150 due to Moderate ecological status (driven by invertebrates and dissolved oxygen conditions); Boyne\_160 due to Moderate biological status; Boyne\_170 due to elevated ammonia; Devlin's\_010 and Devlin's\_020 due to elevated phosphate and ammonia; Mattock\_010 due to Moderate biological status and elevated phosphate; Mattock\_030 due to elevated phosphate. Mattock\_020 is under REVIEW due to elevated phosphate and Castleparks07\_010 is under REVIEW due to its unassigned status.

Significant pressures identified within Boyne\_150 are misconnections and septic tanks. Likely significant pressures within Boyne\_160 are septic tanks, licensed facilities, urban waste water treatment, farmyards and channelisation (note that 2013-2015 hydromorphological status was Moderate). Pressures within Boyne\_160 may also be impacting Boyne\_170. Agricultural activities (i.e. farmyards, cattle access) and septic tanks were highlighted as significant pressures within Devlin's\_010 (siltation issues noted) and Devlin's\_020. Diffuse and point source pressures related to agriculture were highlighted within Mattock\_010 (siltation issues noted), Mattock\_020 and Mattock\_030 in addition to urban waste water treatment in the first two water bodies of the Mattock. An investigative assessment is required for Castleparks07\_010 so as to determine whether any issues exist.

## Map Subcatchment Risk Map

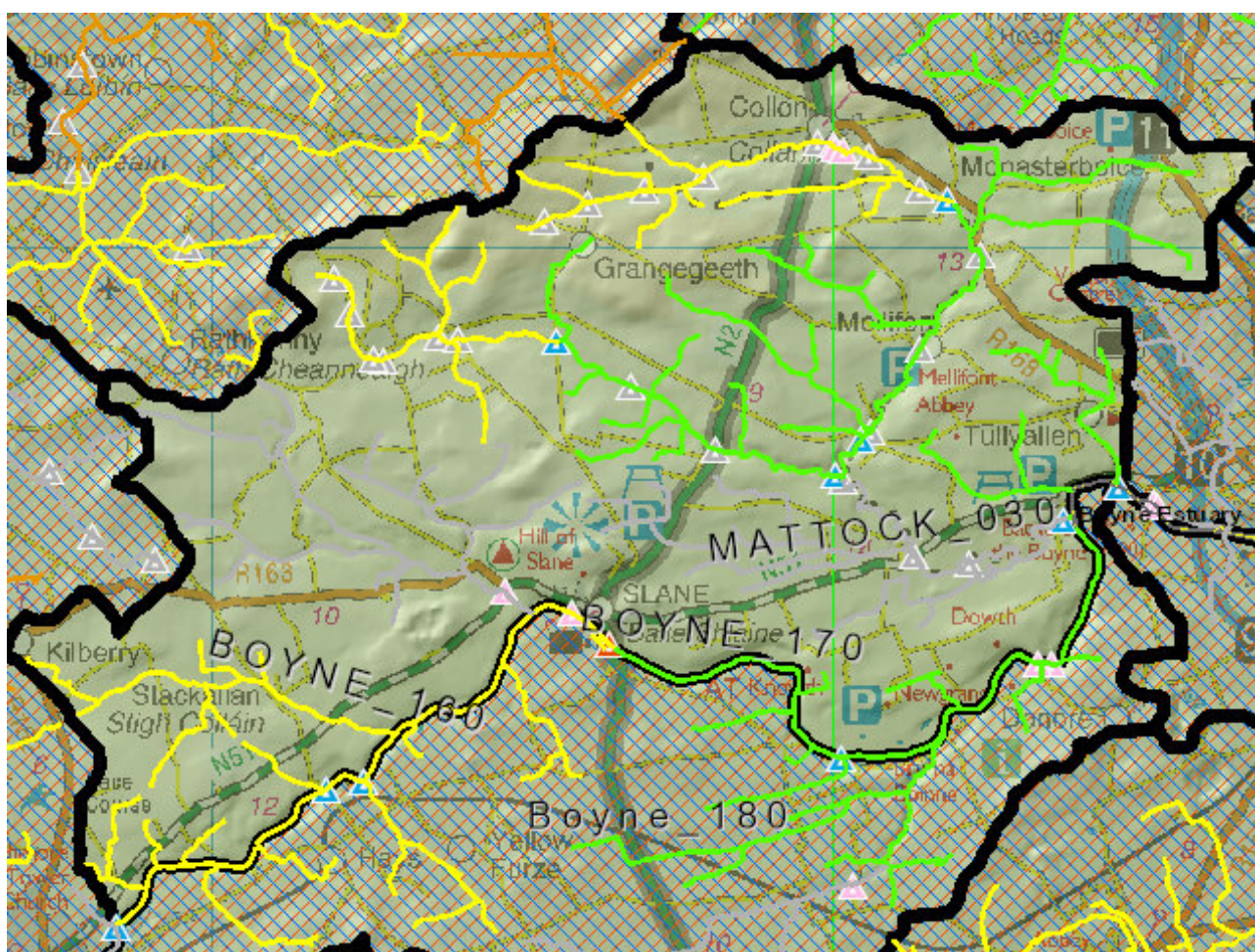


## River And Lake Waterbodies: WFD Risk

The following river and lake waterbodies are in the subcatchment.

Code	Name	Type	WFD Risk	Significant Pressure
IE_EA_07B042010	BOYNE_150	River	At risk	Yes
IE_EA_07B042100	BOYNE_160	River	At risk	Yes
IE_EA_07D020140	DEVLIN'S_010	River	At risk	Yes
IE_EA_07M010100	MATTOCK_010	River	At risk	Yes
IE_EA_07M010300	MATTOCK_030	River	At risk	Yes
IE_EA_07C030930	CASTLEPARKS_010	River	Review	Yes
IE_EA_07M010220	MATTOCK_020	River	Review	Yes
IE_EA_07B042150	BOYNE_170	River	Not at risk	Yes
IE_EA_07B042200	Boyne_180	River	Not at risk	No
IE_EA_07D020300	DEVLIN'S_020	River	Not at risk	Yes

## Map Subcatchment Water Quality Status Map



## River And Lake Waterbodies: Water Quality Status

The water quality status of river and lake waterbodies in the subcatchment is as follows.

Code	Name	Type	2007-09	2010-12	2010-15
IE_EA_07B042010	BOYNE_150	River	Moderate	Good	Moderate
IE_EA_07B042100	BOYNE_160	River	Good	Good	Moderate
IE_EA_07B042150	BOYNE_170	River	Good	Good	Good
IE_EA_07B042200	Boyne_180	River	Moderate	Moderate	Good
IE_EA_07C030930	CASTLEPARKS_010	River	Unassigned	Unassigned	Unassigned
IE_EA_07D020140	DEVLIN'S_010	River	Poor	Moderate	Moderate
IE_EA_07D020300	DEVLIN'S_020	River	Unassigned	Good	Good
IE_EA_07M010100	MATTOCK_010	River	Moderate	Moderate	Moderate
IE_EA_07M010220	MATTOCK_020	River	Moderate	Moderate	Good
IE_EA_07M010300	MATTOCK_030	River	Unassigned	Unassigned	Unassigned

## Potentially Dependent Transitional and Coastal Waterbodies

The Transitional and Coastal waterbodies listed below intersect spatially with river and lake waterbodies in the subcatchment ...

Code	Name	Type	Local Authority	WFD Risk
IE_EA_010_0100	Boyne Estuary	Transitional	Louth County Council	At risk

## Potentially Dependent Groundwater Waterbodies

The groundwaters listed below intersect spatially with river and lake waterbodies in the subcatchment ...

Code	Name	Type	Local Authority	WFD Risk
IE_EA_G_002	Trim	Groundwater	Meath County Council	At risk
IE_EA_G_010	Wilkinstown	Groundwater	Meath County Council	At risk
IE_EA_G_021	Donore	Groundwater	Meath County Council	Review
IE_EA_G_025	Drogheda	Groundwater	Louth County Council	Review
IEGBNI_NB_G_019	Louth	Groundwater	Louth County Council	Review

## Protected Areas intersecting River and Lake Waterbodies

The Protected Areas listed below intersect spatially with river and lake waterbodies in the subcatchment ...

Code	Name	Type	Waterbody Name	Association Type
IEPA1_EA_07B042 200	Boyne_180	Drinking Water	Boyne_180	Within Protected Area
IEPA5D0004	River Boyne	Salmonid	Boyne_180	Overlapping / partly within Protected Area
IEPA5D0004	River Boyne	Salmonid	BOYNE_150	Overlapping / partly within Protected Area
IEPA5D0004	River Boyne	Salmonid	BOYNE_160	Overlapping / partly within Protected Area
IEPA5D0004	River Boyne	Salmonid	BOYNE_170	Overlapping / partly within Protected Area
IERI_EA_1994_000 1	Boyne (River)	Nutrient Sensitive Area	BOYNE_160	Overlapping / partly within Protected Area
IERI_EA_1994_000 1	Boyne (River)	Nutrient Sensitive Area	BOYNE_150	Overlapping / partly within Protected Area
IERI_EA_2010_000 6	Boyne River	Nutrient Sensitive Area	BOYNE_160	Overlapping / partly within Protected Area
IERI_EA_2010_000 6	Boyne River	Nutrient Sensitive Area	Boyne_180	Overlapping / partly within Protected Area
IERI_EA_2010_000 6	Boyne River	Nutrient Sensitive Area	BOYNE_170	Overlapping / partly within Protected Area
IETW_EA_2010_00 01	Boyne Estuary	Nutrient Sensitive Area	Boyne_180	Overlapping / partly within Protected Area

## Pressures

Below is a list of all significant pressures identified in the subcatchment.

Code	Name	WFD Risk	Pressure Category	Pressure Sub Category
IE_EA_010_0100	Boyne Estuary	At risk	Urban Waste Water	Agglomeration PE > 10,000
IE_EA_010_0100	Boyne Estuary	At risk	Agriculture	Agriculture
IE_EA_07B042010	BOYNE_150	At risk	Domestic Waste Water	Waste Water discharge
IE_EA_07B042010	BOYNE_150	At risk	Anthropogenic Pressures	Unknown
IE_EA_07B042100	BOYNE_160	At risk	Anthropogenic Pressures	Unknown
IE_EA_07B042100	BOYNE_160	At risk	Industry	Section 4
IE_EA_07B042100	BOYNE_160	At risk	Hydromorphology	Channelisation
IE_EA_07B042100	BOYNE_160	At risk	Domestic Waste Water	Waste Water discharge
IE_EA_07B042100	BOYNE_160	At risk	Agriculture	Farmyards
IE_EA_07B042100	BOYNE_160	At risk	Urban Waste Water	Agglomeration PE of 1,001 to 2,000
IE_EA_07D020140	DEVLIN'S_010	At risk	Domestic Waste Water	Waste Water discharge
IE_EA_07D020140	DEVLIN'S_010	At risk	Agriculture	Agriculture
IE_EA_07M010100	MATTOCK_010	At risk	Agriculture	Pasture
IE_EA_07M010100	MATTOCK_010	At risk	Urban Waste Water	Agglomeration PE of 1,001 to 2,000
IE_EA_07M010300	MATTOCK_030	At risk	Agriculture	Agriculture
IE_EA_G_002	Trim	At risk	Agriculture	Agriculture
IE_EA_G_002	Trim	At risk	Domestic Waste Water	Waste Water discharge
IE_EA_G_010	Wilkinstown	At risk	Agriculture	Agriculture
IE_EA_07C030930	CASTLEPARKS_010	Review	Agriculture	Agriculture
IE_EA_07M010220	MATTOCK_020	Review	Agriculture	Agriculture
IE_EA_G_021	Donore	Review	Anthropogenic Pressures	Unknown
IE_EA_G_025	Drogheda	Review	Anthropogenic Pressures	Unknown
IEGBNI_NB_G_019	Louth	Review	Anthropogenic Pressures	Unknown

## Further Characterisation Actions

The following further characterisation actions have been identified. These are necessary to help understand more fully issues in the subcatchment and their likely cause.

Code	Name	Action	Responsible Organisation
IE_EA_07B042100	BOYNE_160	IA3 Determination of Water Quality (unassigned waterbody)	Meath County Council
IE_EA_07B042150	BOYNE_170	IA7 Multiple Sources in Multiple Areas	Meath County Council
IE_EA_07B042010	BOYNE_150	IA7 Multiple Sources in Multiple Areas	Meath County Council
IE_EA_07D020140	DEVLIN'S_010	IA1 Provision of Information	Environmental Protection Agency
IE_EA_07M010220	MATTOCK_020	IA1 Provision of Information	Meath County Council
IE_EA_07B042100	BOYNE_160	IA1 Provision of Information	Irish Water
IE_EA_07B042100	BOYNE_160	IA1 Provision of Information	Meath County Council
IE_EA_07M010300	MATTOCK_030	IA7 Multiple Sources in Multiple Areas	Meath County Council
IE_EA_07M010100	MATTOCK_010	IA1 Provision of Information	Louth County Council
IE_EA_07M010100	MATTOCK_010	IA1 Provision of Information	Irish Water
IE_EA_07C030930	CASTLEPARKS_010	IA3 Determination of Water Quality (unassigned waterbody)	Meath County Council
IE_EA_07D020140	DEVLIN'S_010	IA7 Multiple Sources in Multiple Areas	Meath County Council