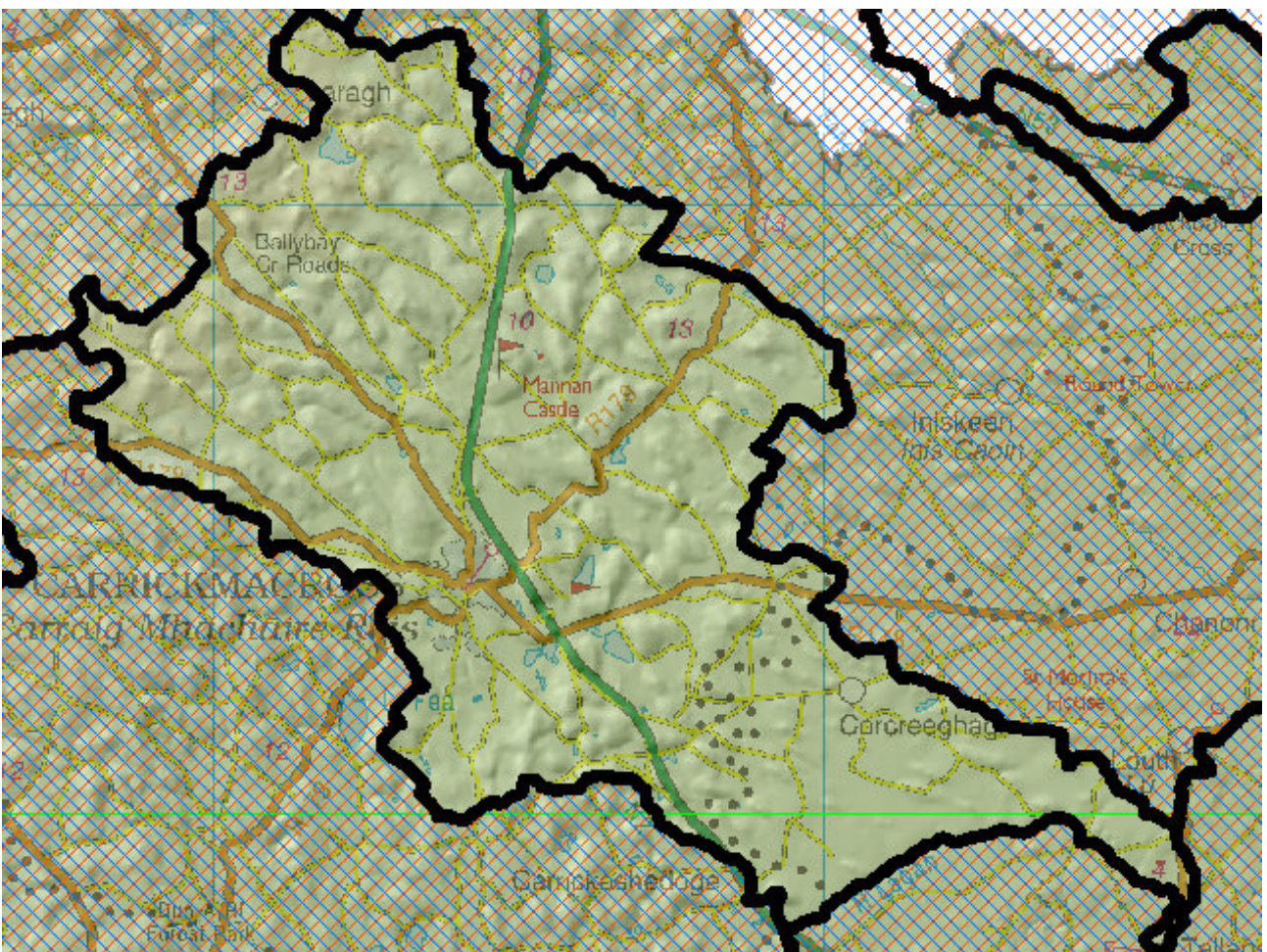


WFD Cycle 2

Catchment Newry, Fane, Glyde and Dee

Subcatchment Glyde_SC_020

Code 06_5



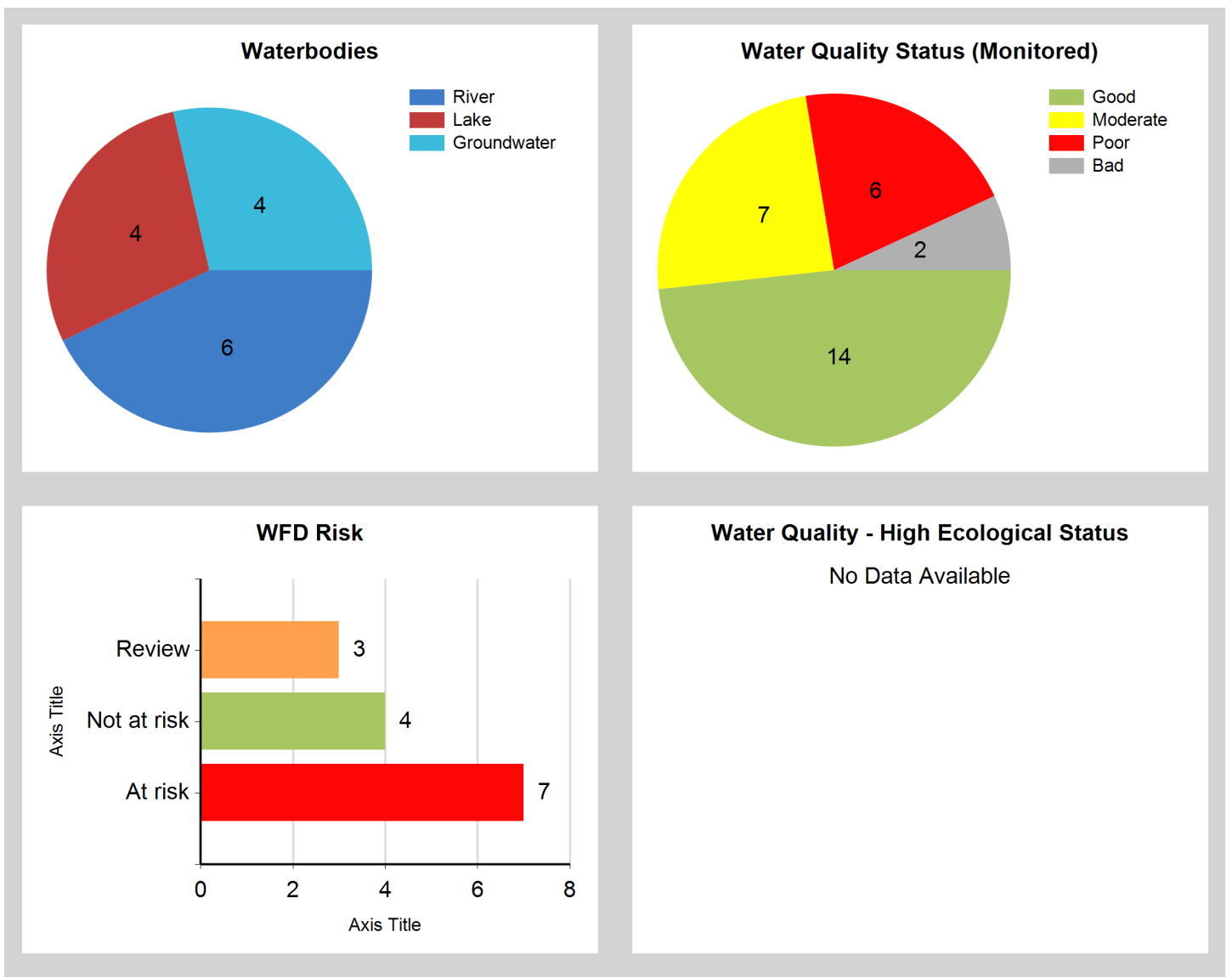
© Ordnance Survey Ireland. All rights reserved. Licence Number EN 0059208

Generated on: 18 Dec 2018

Assessment Purpose

This assessment has been produced as part of the national characterisation programme undertaken for the second cycle of Water Framework Directive river basin management planning. It has been led by the EPA, with input from Local Authorities and other public bodies, and with support from RPS consultants.

The characterisation assessments are automatically generated from the information stored in the WFD Application. They are based on information available to the end of 2015 but may be subject to change until the final 2018-21 river basin management plan is published. Users should ensure that they have the most up to date information by downloading the latest assessment before use.



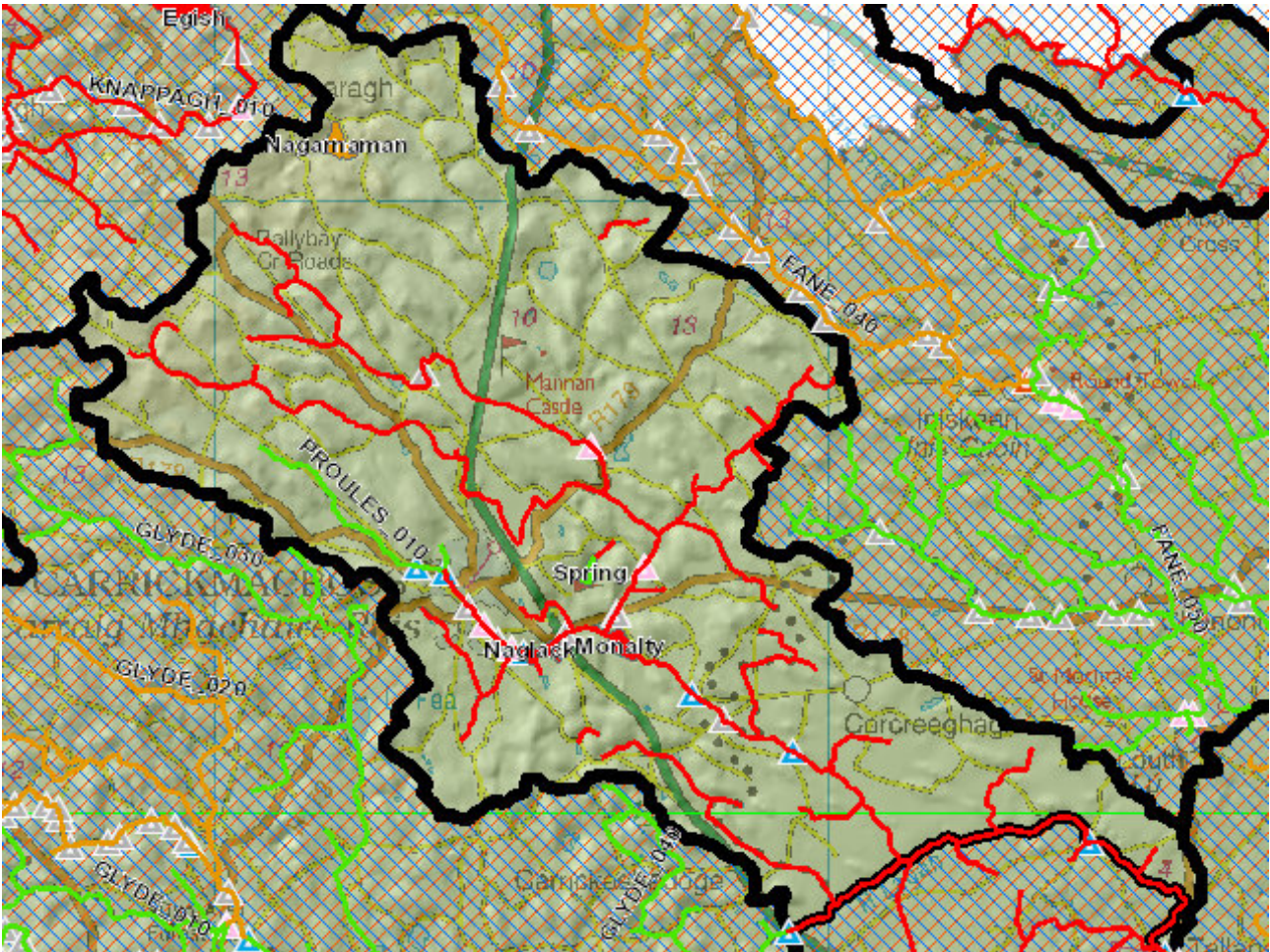
Evaluation of Priority Subcatchment Issues

Five out of six river water bodies and two out of four lake water bodies are AT RISK. Glyde_050, Rossdreenagh Stream_010, Rossdreenagh Stream_020 and Proules_030 are AT RISK due to their less than Good ecological status. Proules_020, Naglack Lough and Monalty Lough are also AT RISK due to their less than Good ecological status, in addition to elevated nutrients. Nagarnaman Lough is under REVIEW due to its unassigned status.

Significant pressures that may be impacting the biology of the two water bodies of the Rossdreenagh Stream are small point sources, related to agriculture and domestic waste water treatment, and channelisation. Urban wastewater treatment is a significant pressure for Proules_020, possibly impacting nutrient conditions and in turn, biological conditions. This pressure may also be impacting water bodies further downstream (i.e. Proules_030 and lake water bodies, Naglack Lough and Moynalty Lough). These lake water bodies are also inhabited by zebra mussels. Additional pressures within Proules_030 that may also be impacting status include diffuse agriculture, diffuse urban and channelisation, but these pressures are unlikely to be as significant as pressures from the inputting water bodies.

While Nagarnaman Lough is unmonitored, it is known to dry up which could be related to abstraction activities.

Map Subcatchment Risk Map

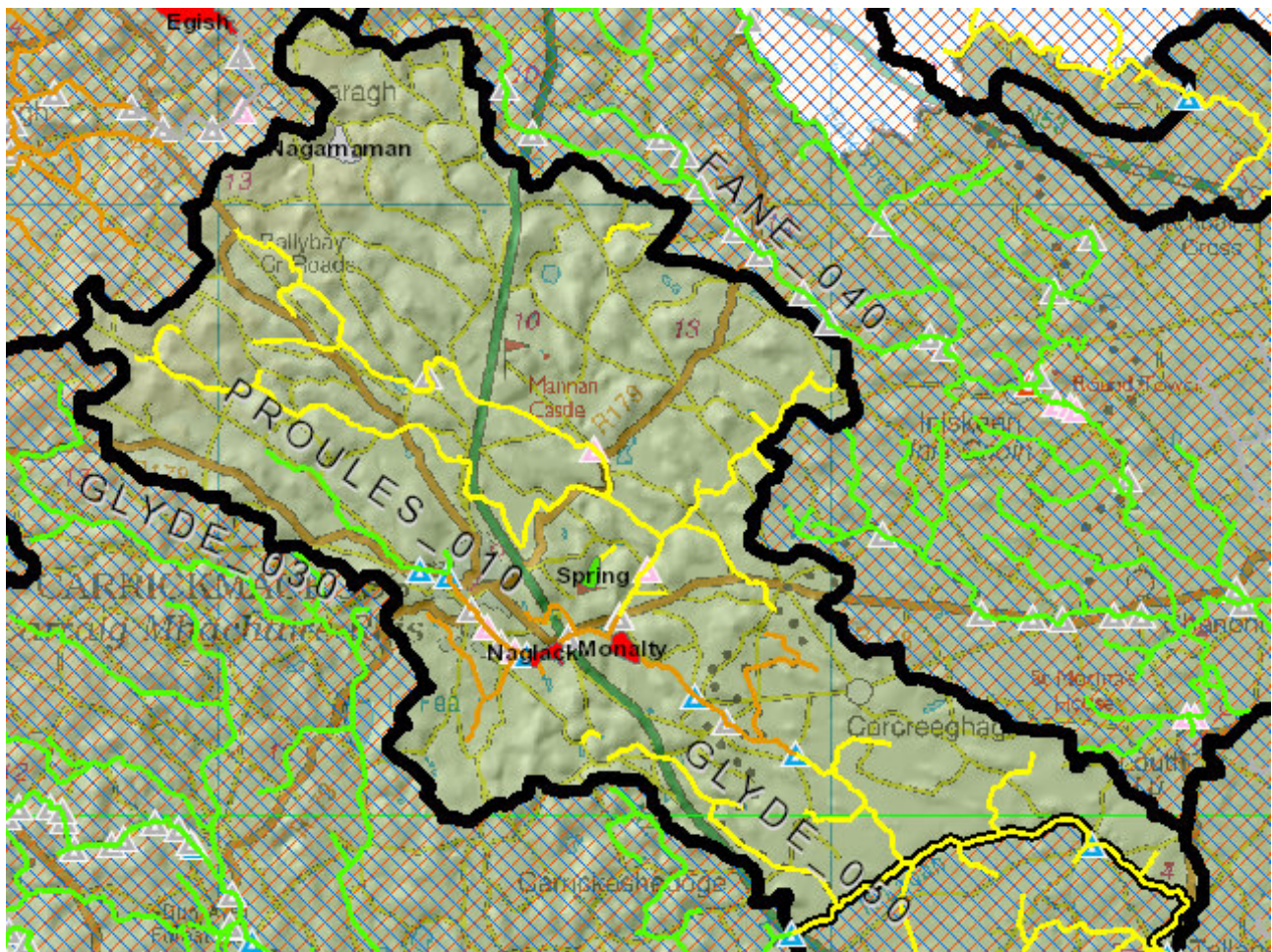


River And Lake Waterbodies: WFD Risk

The following river and lake waterbodies are in the subcatchment.

Code	Name	Type	WFD Risk	Significant Pressure
IE_NB_06_234	Monalty	Lake	At risk	Yes
IE_NB_06_55	Naglack	Lake	At risk	Yes
IE_NB_06G020700	GLYDE_050	River	At risk	Yes
IE_NB_06P010300	PROULES_020	River	At risk	Yes
IE_NB_06P010600	PROULES_030	River	At risk	Yes
IE_NB_06R030260	ROSSDREENAGH STREAM_010	River	At risk	Yes
IE_NB_06R030400	ROSSDREENAGH STREAM_020	River	At risk	Yes
IE_NB_36_383	Nagamaman	Lake	Review	Yes

Map Subcatchment Water Quality Status Map



River And Lake Waterbodies: Water Quality Status

The water quality status of river and lake waterbodies in the subcatchment is as follows.

Code	Name	Type	2007-09	2010-12	2010-15
IE_NB_06G020700	GLYDE_050	River	Good	Moderate	Moderate
IE_NB_06_234	Monalty	Lake	Poor	Moderate	Bad
IE_NB_36_383	Nagarnaman	Lake	Unassigned	Unassigned	Unassigned
IE_NB_06_55	Naglack	Lake	Poor	Poor	Bad
IE_NB_06P010110	PROULES_010	River	Good	Good	Good
IE_NB_06P010300	PROULES_020	River	Unassigned	Poor	Poor
IE_NB_06P010600	PROULES_030	River	Moderate	Moderate	Poor
IE_NB_06R030260	ROSSDREENAGH STREAM_010	River	Unassigned	Unassigned	Moderate
IE_NB_06R030400	ROSSDREENAGH STREAM_020	River	Unassigned	Unassigned	Moderate
IE_NB_06_198	Spring	Lake	Unassigned	Good	Good

Potentially Dependent Transitional and Coastal Waterbodies

The Transitional and Coastal waterbodies listed below intersect spatially with river and lake waterbodies in the subcatchment ...

Code	Name	Type	Local Authority	WFD Risk
------	------	------	-----------------	----------

Potentially Dependent Groundwater Waterbodies

The groundwaters listed below intersect spatially with river and lake waterbodies in the subcatchment ...

Code	Name	Type	Local Authority	WFD Risk
IE_NB_G_016	Carrickmacross	Groundwater	Monaghan County Council	Not at risk
IE_NB_G_017	Kingscourt	Groundwater	Cavan County Council	Not at risk
IE_NW_G_061	Cavan	Groundwater	Cavan County Council	Review
IEGBNI_NB_G_019	Louth	Groundwater	Louth County Council	Review

Protected Areas intersecting River and Lake Waterbodies

The Protected Areas listed below intersect spatially with river and lake waterbodies in the subcatchment ...

Code	Name	Type	Waterbody Name	Association Type
IEGBNILK_NB_2001_0025	Lough Monalty, County Monaghan	Nutrient Sensitive Area	Monalty	Overlapping / partly within Protected Area
IEGBNIRI_NB_2001_0014a	River Proules Lower	Nutrient Sensitive Area	PROULES_030	Overlapping / partly within Protected Area
IEGBNIRI_NB_2001_0014a	River Proules Lower	Nutrient Sensitive Area	GLYDE_050	Overlapping / partly within Protected Area
IEGBNIRI_NB_2001_0014b	River Proules Upper	Nutrient Sensitive Area	PROULES_010	Overlapping / partly within Protected Area
IEGBNIRI_NB_2001_0014b	River Proules Upper	Nutrient Sensitive Area	PROULES_020	Overlapping / partly within Protected Area
IEGBNIRI_NB_2001_0014b	River Proules Upper	Nutrient Sensitive Area	PROULES_030	Overlapping / partly within Protected Area
IEPA1_NB_06_234	Monalty	Drinking Water	Monalty	Within Protected Area
IEPA1_NB_06G020700	GLYDE_050	Drinking Water	GLYDE_050	Within Protected Area
IEPA1_NB_36_383	Nagarnaman	Drinking Water	Nagarnaman	Within Protected Area

Pressures

Below is a list of all significant pressures identified in the subcatchment.

Code	Name	WFD Risk	Pressure Category	Pressure Sub Category
IE_NB_06_234	Monalty	At risk	Invasive Species	Invasive species
IE_NB_06_234	Monalty	At risk	Urban Waste Water	Agglomeration PE > 10,000
IE_NB_06_55	Naglack	At risk	Invasive Species	Invasive species
IE_NB_06_55	Naglack	At risk	Urban Waste Water	Agglomeration PE > 10,000
IE_NB_06G020700	GLYDE_050	At risk	Urban Waste Water	Combined Sewer Overflows
IE_NB_06P010300	PROULES_020	At risk	Urban Waste Water	Agglomeration PE > 10,000
IE_NB_06P010600	PROULES_030	At risk	Urban Waste Water	Agglomeration PE > 10,000
IE_NB_06P010600	PROULES_030	At risk	Hydromorphology	Channelisation
IE_NB_06R030260	ROSSDREENAGH STREAM_010	At risk	Hydromorphology	Channelisation
IE_NB_06R030400	ROSSDREENAGH STREAM_020	At risk	Hydromorphology	Channelisation
IE_NB_06R030400	ROSSDREENAGH STREAM_020	At risk	Agriculture	Agriculture
IE_NB_36_383	Nagarnaman	Review	Abstractions	Water supply
IE_NB_36_383	Nagarnaman	Review	Agriculture	Pasture
IE_NW_G_061	Cavan	Review	Anthropogenic Pressures	Unknown
IEGBNI_NB_G_019	Louth	Review	Anthropogenic Pressures	Unknown

Further Characterisation Actions

The following further characterisation actions have been identified. These are necessary to help understand more fully issues in the subcatchment and their likely cause.

Code	Name	Action	Responsible Organisation
IE_NB_06_55	Naglack	IA1 Provision of Information	Monaghan County Council
IE_NB_06P010600	PROULES_030	IA1 Provision of Information	Louth County Council
IE_NB_06P010300	PROULES_020	IA1 Provision of Information	Monaghan County Council
IE_NB_06G020700	GLYDE_050	IA4 Regulated Point Sources	Louth County Council
IE_NB_36_383	Nagarnaman	IA3 Determination of Water Quality (unassigned waterbody)	Monaghan County Council
IE_NB_06R030400	ROSSDREENAGH STREAM_020	IA7 Multiple Sources in Multiple Areas	Monaghan County Council
IE_NB_06R030260	ROSSDREENAGH STREAM_010	IA1 Provision of Information	Monaghan County Council
IE_NB_06_234	Monalty	IA1 Provision of Information	Monaghan County Council