



Cycle 3

HA 40 Donagh-Moville Catchment Report, May 2024

Introduction

Water Quality
Summary

High Status
Objectives

Water Quality
Changes

WFD Risk

Significant
Pressures

Action

Summary
Information

Introduction

This report provides an overview of the water quality in the Donagh-Moville Catchment and the pressures impacting on water quality. This report is based on data up to 2021. The latest water quality data, dashboards and maps throughout this report are available on catchments.ie and [EPA Water Map](https://epa.ie/water-map).

The Donagh-Moville Catchment includes the area drained by the River Donagh and all streams entering tidal water between Dunaff Head and Culmore Point, Co. Derry, draining a total area of 507km². The largest urban centre in the catchment is Carndonagh. The other main urban centre in this catchment is Moville. The catchment is largely mountainous and is entirely underlain by metamorphic rocks that provide limited groundwater resources.

The Donagh-Moville Catchment is divided into six subcatchments and has 43 surface water bodies and four groundwater bodies.

[View the Donagh-Moville Catchment on the EPA Water Map](#)

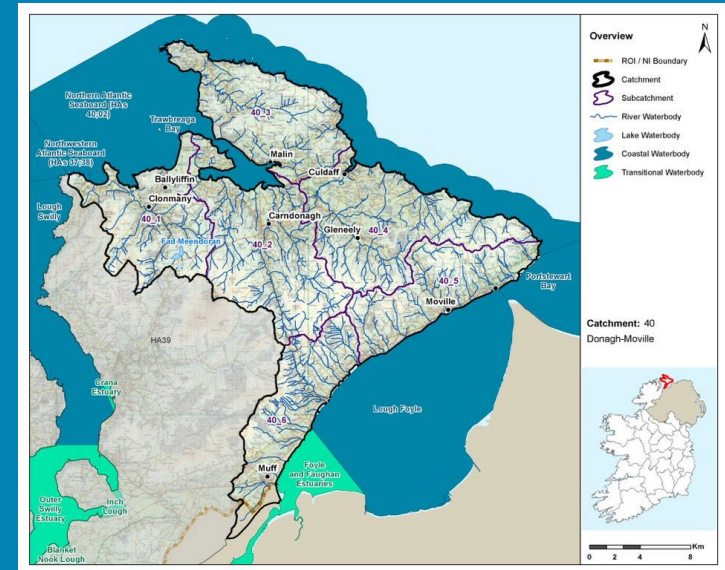
Previous Catchment Assessments

Previous catchment assessments, which provide additional historic context and information, are archived on catchments.ie:

- [Cycle 2 Catchment Assessments – published September 2018](#)
- [Cycle 3 Draft Catchment Assessments – published September 2021](#)

Online Dashboards

Links to online dashboards are provided in this report – these numbers may vary from those in this document as time progress and the online dashboards are updated based on the latest data and scientific assessments.



Overview of Subcatchments in the Donagh-Moville Catchment

Water Quality Summary

Introduction

Water Quality Summary

High Status Objectives

Water Quality Changes

WFD Risk

Significant Pressures

Action

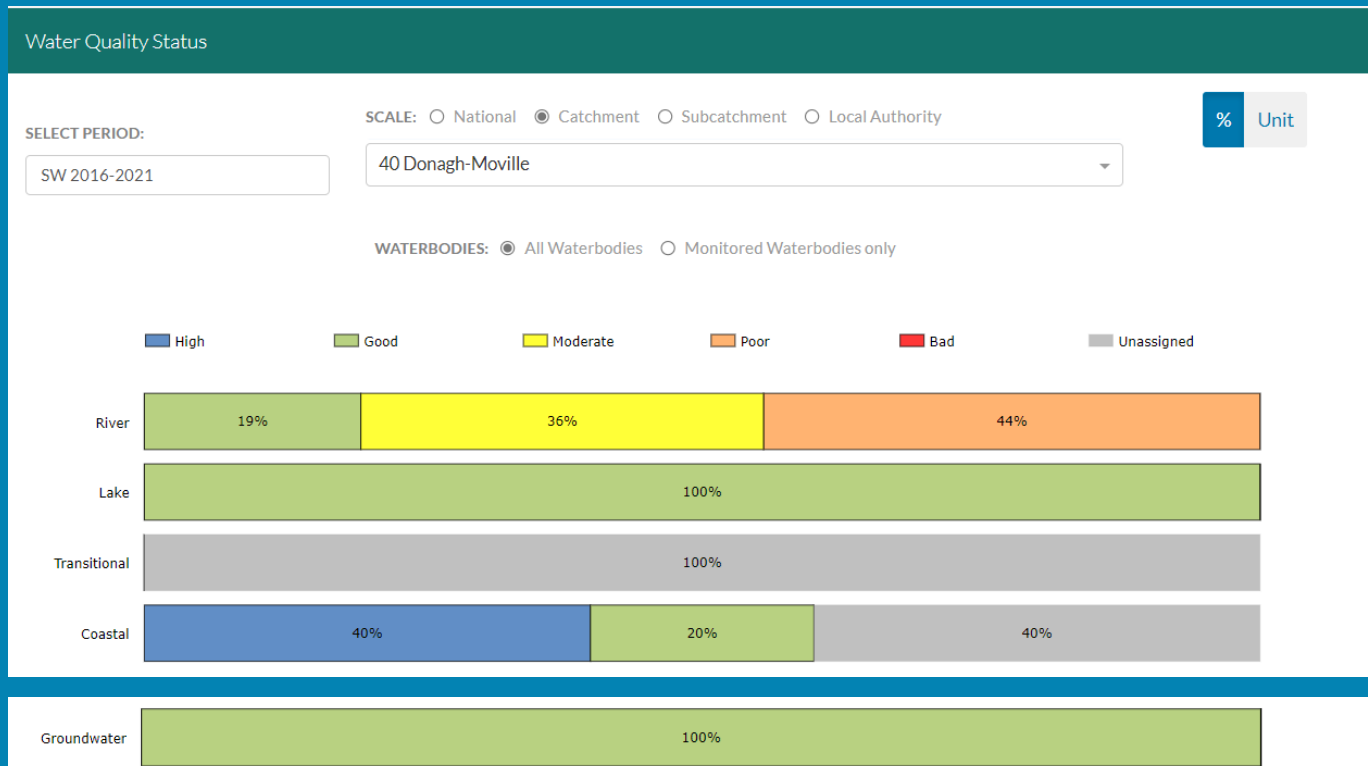
Summary Information

The dashboard below provides a breakdown of water quality status for surface and groundwater bodies in the Donagh-Moville Catchment.

A total of 26% of surface waterbodies were at Good or High Ecological Status in the 2016-2021 monitoring period. One hundred percent of groundwater bodies were at Good status.

Go to EPA Water Maps for WFD Status

[EPA Water Map](#)



Water quality status 2016-2021 for the Donagh-Moville Catchment.
View Online Dashboard: <https://www.catchments.ie/data/#/dashboard/waterquality>

High Status Objective Waterbodies

Introduction

Water Quality Summary

High Status Objectives

Water Quality Changes

WFD Risk

Significant Pressures

Action

Summary Information

High status waters are prioritised for protection and action.

There are five waterbodies with a **High Ecological Status Objective (HSO)** in the Donagh-Moville Catchment, with four currently not meeting their environmental objective of High.

Grants for septic tank upgrades may be available in high status objective catchment areas - you can learn more and check your Eircode for eligibility here: <https://www.gov.ie/en/publication/6cc1e-domestic-waste-water-treatment-systems-septic-tanks>

[View HSO river waterbodies in this catchment.](#)

See Status and Risk / High Status Objective for other waterbody types.

Water Quality Status - High Status Objective Waterbodies

SELECT TYPE:

All Surface Waters

SCALE: Catchment Local Authority

40 Donagh-Moville

	SW 2007-2009	SW 2010-2012	SW 2010-2015	SW 2013-2018	SW 2016-2021
Fad Meendoran (Lake)	High	High	High	Good	Good
GLENNAGANNON_010 (River)	High	Good	Good	Good	Good
LOUGH NASTACKAN STREAM_010 (River)	High	High	Poor	Good	Good
Northwestern Atlantic Seaboard (HAs 37;38) (Coastal)	High	Good	High	High	High
STRAID_010 (River)	High	Good	Good	Moderate	Moderate

Water quality status for High Ecological Status Objective waterbodies.

View Online Dashboard: <https://www.catchments.ie/data/#/dashboard/waterquality>

Water Quality Changes

Below illustrates the changes in ecological status in monitored surface waterbodies over the last five monitoring cycles in the Donagh-Moville Catchment. Nationally while there have been improvements in some waterbodies, these have been offset by declines elsewhere.

Introduction

Water Quality Summary

High Status Objectives

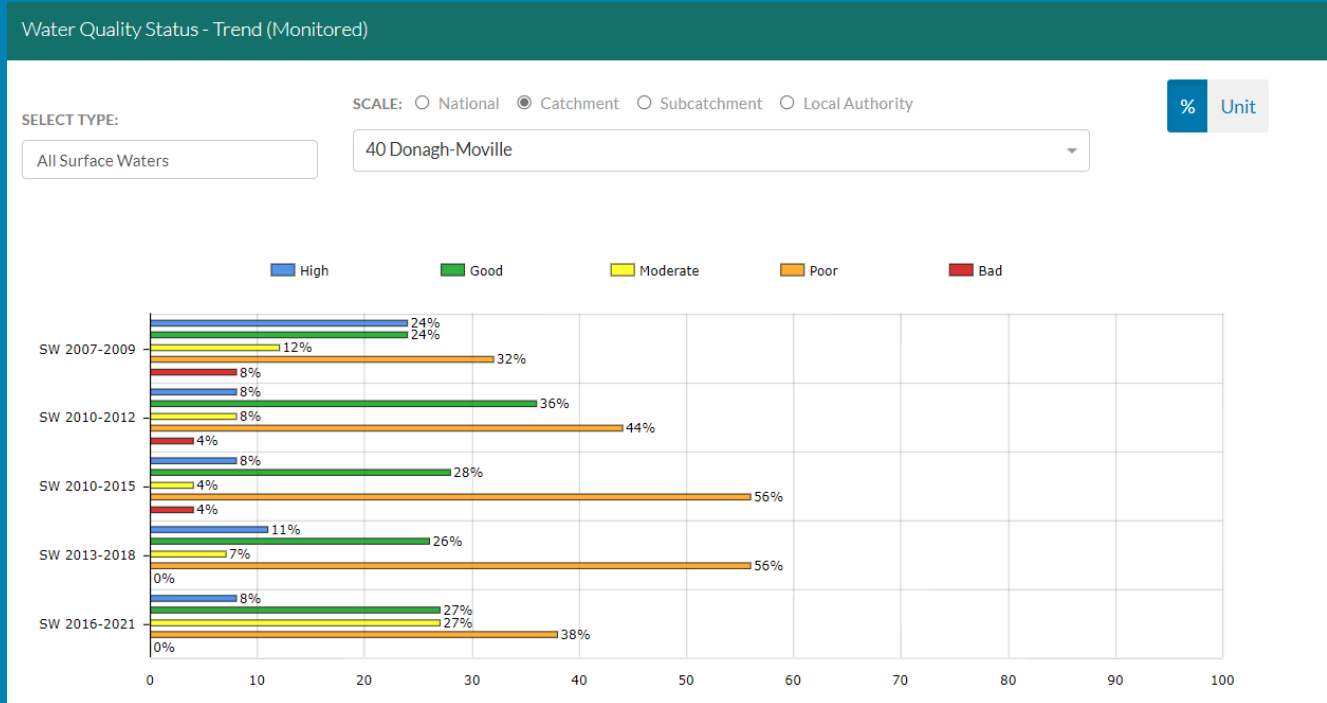
Water Quality Changes

WFD Risk

Significant Pressures

Action

Summary Information



Ecological status trends for monitored surface waterbodies over the last five monitoring cycles in the Donagh-Moville Catchment. **View online dashboard:** <https://www.catchments.ie/data/#/dashboard/waterquality>

A total of 12 (26%) waterbodies are currently meeting their environmental objective of Good or High Ecological Status.

	Total	Achieving Environmental Objectives (2016-2021)	High Status Environmental Objectives Waterbodies	Achieving High Status Environmental Objectives (2016-2021)
Rivers	36	5 (14%)	3	0 (0%)
Canals	-	-	-	-
Lakes	1	0 (0%)	1	0 (0%)
Transitional	1	0 (0%)	0	0 (0%)
Coastal	5	3 (60%)	1	1 (100%)
Groundwater	4	4 (100%)	-	-

WFD Risk

Introduction

Water Quality Summary

High Status Objectives

Water Quality Changes

WFD Risk

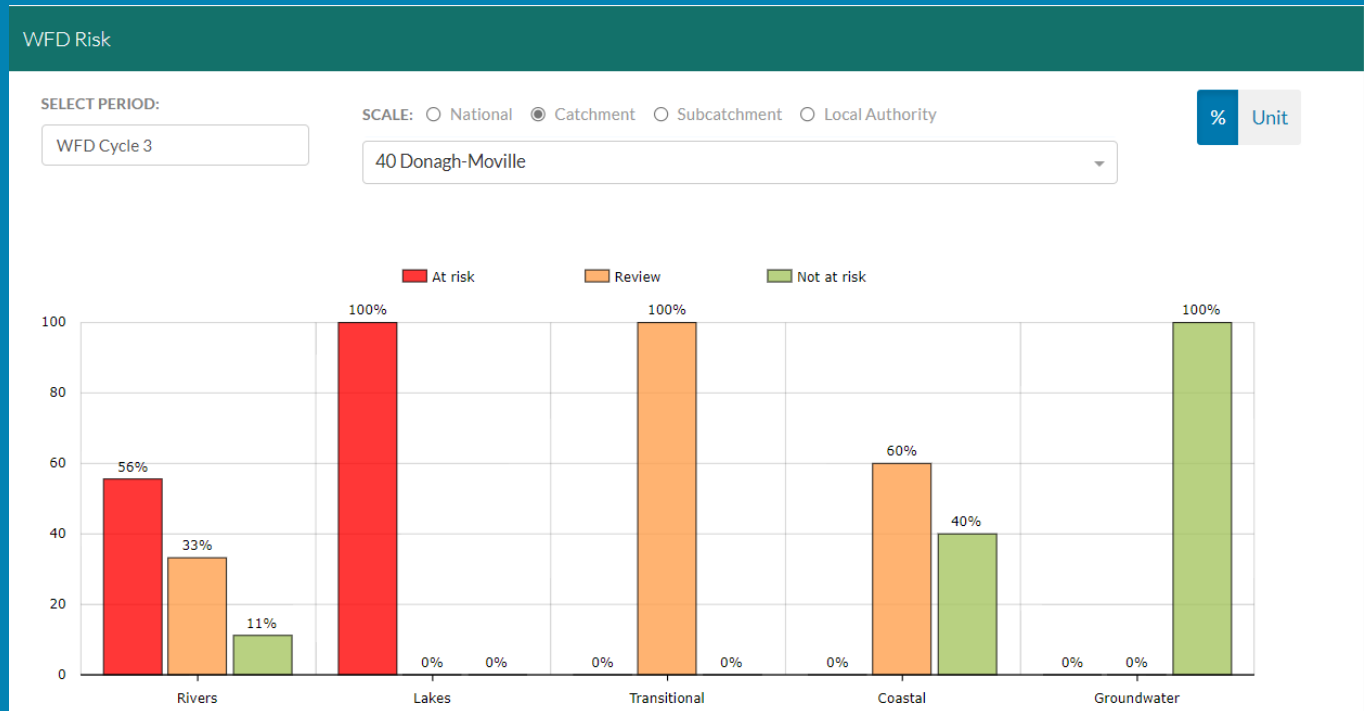
Significant Pressures

Action

Summary Information

A total of 21 (45%) waterbodies are *At Risk* of not meeting their environmental objective in the Donagh-Moville Catchment, while 16 (34%) are under *Review* and 10 (21%) are *Not At Risk*.

[Go to EPA Water Map to see WFD Risk for this catchment](#)



WFD Risk for the Donagh-Moville Catchment based on 2016-2021 data.

[View Online Dashboard: https://www.catchments.ie/data/#/dashboard/waterquality](https://www.catchments.ie/data/#/dashboard/waterquality)

There is currently one heavily modified water bodies (HMWBs) in the Donagh-Moville Catchment, *Foyle and Faughan Estuaries*. It is currently under *Review*.

There are no artificial waterbodies in the Donagh-Moville Catchment.

The [EPA's characterisation outcome report](#) has more information on WFD Risk

Introduction

Water Quality
Summary

High Status
Objectives

Water Quality
Changes

WFD Risk

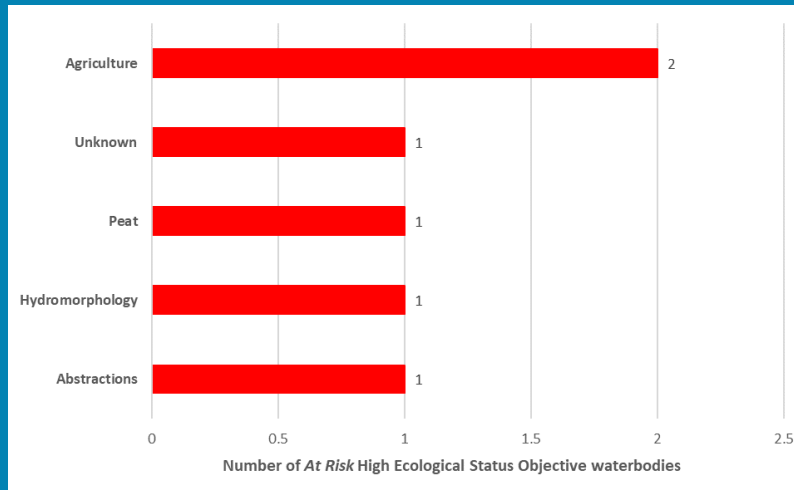
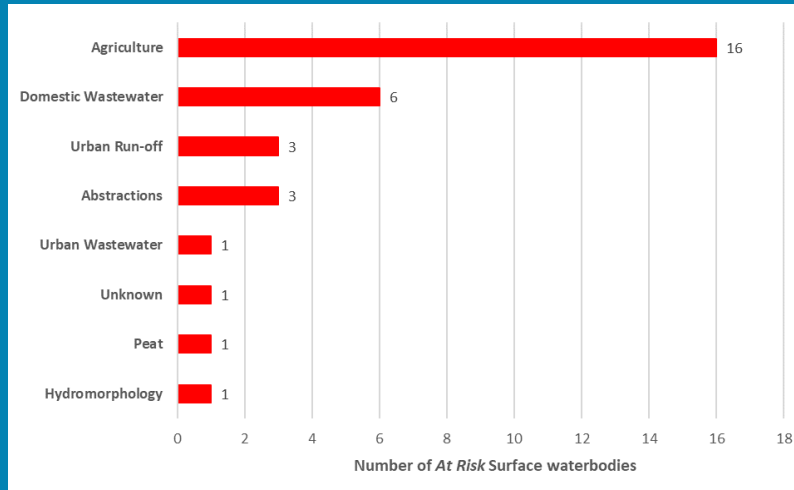
Significant
Pressures

Action

Summary
Information

Significant Pressures driving risk

Significant pressure types impacting the 21 *At Risk* surface waterbodies are broken down in the figures below, including significant pressure information for the four *At Risk* High Ecological Status Objective waterbodies.



The issues driven by these pressures are mainly nutrient pollution, organic pollution and chemical pollution impacts for surface water. For more information, see <https://www.catchments.ie/data/#/dashboard/pressure?k=i351zs>.

Go to the Summary Information section to get significant pressure and issue data for At Risk waterbodies within the Donagh-Moville Catchment.

Click [here](#) for more information on significant pressures

Introduction

Water Quality
Summary

High Status
Objectives

Water Quality
Changes

WFD Risk

Significant
Pressures

Action

Summary
Information

Significant Pressures


Agriculture is the top significant pressure impacting 76% of the 21 *At Risk* waterbodies within the Donagh-Moville Catchment, followed by 29% impacted by domestic wastewater and 14% by both abstractions and urban run-off.

The catchments.ie dashboards will show all significant pressures identified for this catchment.

www.catchments.ie/data/#/dashboard/pressure


Go to the [EPA Water Maps](#) for the locations of all significant pressure types identified for this catchment


River Waterbody

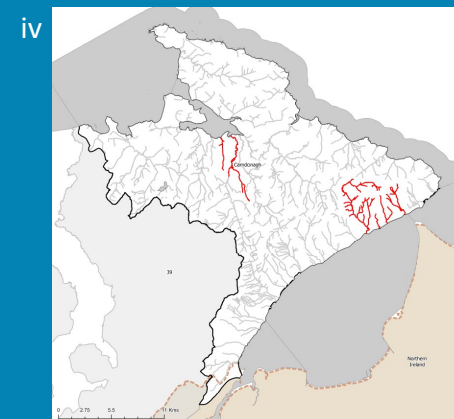
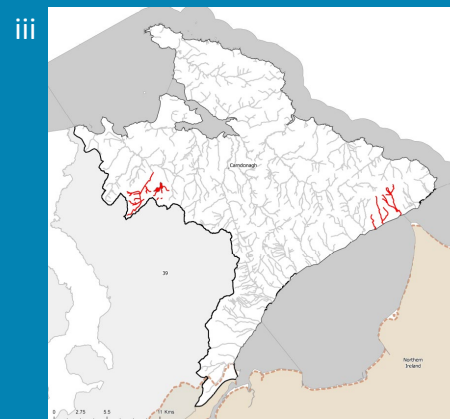
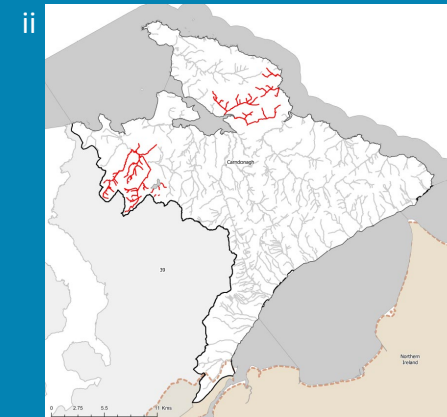
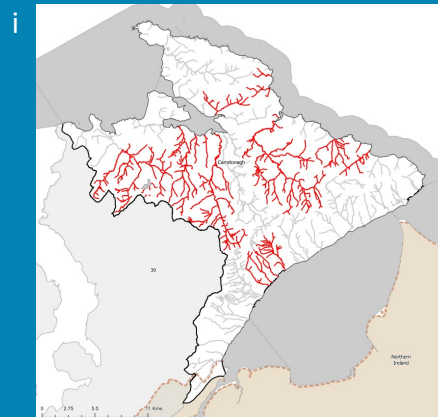
 Significant Pressure in Waterbody *At Risk*

 Other Waterbodies

Lake, Coastal and Transitional Waterbody

 Significant Pressure in Waterbody *At Risk*

 Other Waterbodies



Locations of At Risk surface waterbodies impacted by i) Agriculture, ii) Domestic Wastewater, iii) Abstractions and iv) Urban Run-off

Introduction

Water Quality
Summary

High Status
Objectives

Water Quality
Changes

WFD Risk

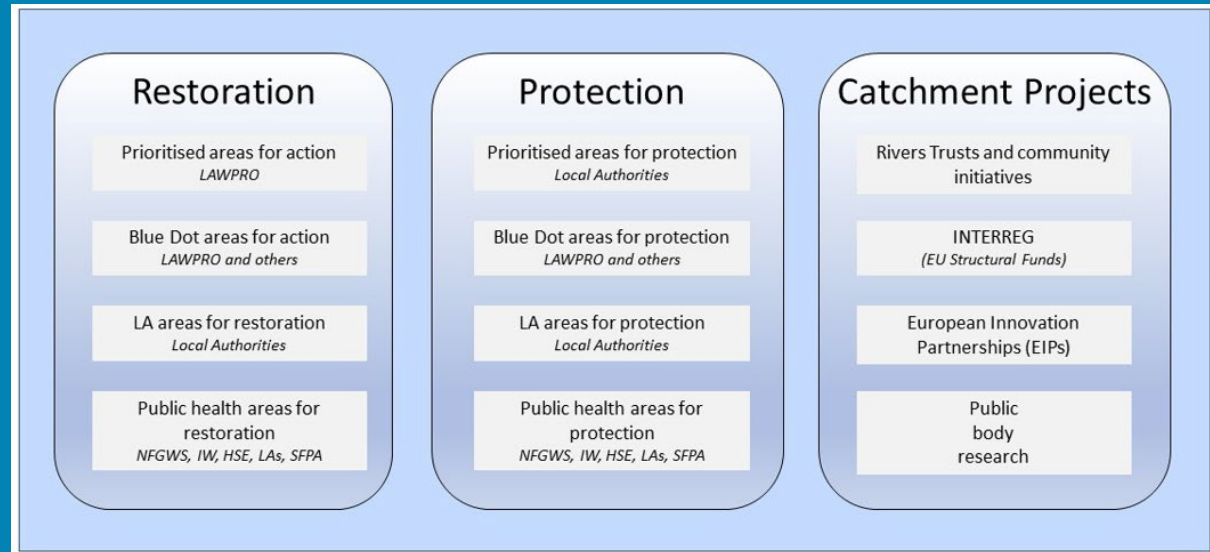
Significant
Pressures

Action

Summary
Information

Priority Areas for Action

A number of waterbodies have been prioritised through the selection of Areas for Action. There were five Priority Areas for Action identified for the second river basin management planning cycle in the Donagh-Moville Catchment. This has increased to a total of six Areas for Restoration and one Catchment Project for the third cycle. ***Go to the summary information section to get Area for Action information for waterbodies within the Donagh-Moville Catchment.***



Types of Areas for Action under the third cycle River Basin Management Plan

- View the current progress of Areas for Action and Summary Reports completed by LAWPRO, on catchments.ie and the EPA Water Map:
 - <https://www.catchments.ie/data/#/areaforaction>
 - https://gis.epa.ie/EPAMaps/default?easting=?&northing=?&lid=EPA:WFD_AreasForAction
- LAWPRO have also published detailed desktop studies on Prioritised Areas for Action (PAAs) which are available their website: <https://lawwaters.ie/desktop-studies/>
- Information on Areas for Action for the second cycle is available in Cycle 2 Catchment Assessments which have been archived on catchments.ie: <https://www.catchments.ie/download/cycle-2-catchment-assessments-published-september-2018/>

Introduction

Water Quality
Summary

High Status
Objectives

Water Quality
Changes

WFD Risk

Significant
Pressures

Action

Summary
Information

Summary information for all waterbodies in the Donagh-Moville Catchment

The next page provides a table with a breakdown of key information for all waterbodies in this catchment. The key is provided below. Additional information for each waterbody is available on <https://www.catchments.ie/data>, including a breakdown of status, a monitoring schedule for monitored waterbodies and downloadable chemistry results, where available.

Protected Area categories	BW: Bathing Water DW: Drinking Water Fish: Salmonid Waters NSA: Nutrient Sensitive Areas SAC: Special Area of Conservation, Natura 2000 (water dependent habitats and species) SF: Shellfish Area SPA: Special Area of Protection, Natura 2000 (water dependent habitat and species)
Significant pressure* types categories <i>* For At Risk waterbodies only</i>	Ab: Abstractions Ag: Agriculture Aq: Aquaculture At: Atmospheric DWW: Domestic Wastewater For: Forestry HPS: Historically polluted sites HYMO: Hydromorphology Ind: Industry IS: Invasive Species M+Q: Mines and Quarries Peat: Peat Drainage and Extraction UR: Urban Run-Off UWW: Urban Wastewater Was: Waste WT: Water Treatment

Catchment Code	Waterbody (WB) Code	WB Name	WB Type	Local Authority	Protected Area	Status 10-15	Status 13-18	Status 16-21	Environmental Objective	Environmental Objective Date	WFD Risk 16-21	Significant Issue(s)	Significant Pressure(s)	Area for Action (AFA)	AFA (lead, type)	Link to WB page on catchments.ie	Link to WB on EPA Water Map
40	GBNIE6NB010	Portstewart Bay	Coastal	N.A.		Unassigned	Unassigned	Unassigned	Good	Unknown	Review					View WB Page	View WB on EPA Water Map
40	GBNIE6NW250	Lough Foyle	Coastal	N.A.	SPA;	Unassigned	Good	Unassigned	Good	Unknown	Review					View WB Page	View WB on EPA Water Map
37, 38, 39, 40	IE_NW_100_0000	Northwestern Atlantic Seaboard (HAs 37;38)	Coastal	Donegal County Council	BW; SAC; SPA; SF;	High	High	High	High	2021 or earlier	Not at risk					View WB Page	View WB on EPA Water Map
39, 40	IE_NW_230_0000	Northern Atlantic Seaboard (HAs 40;02)	Coastal	Donegal County Council	BW; SAC; SPA;	Unassigned	High	High	Good	2021 or earlier	Not at risk					View WB Page	View WB on EPA Water Map
40	IE_NW_240_0000	Trawbreaga Bay	Coastal	Donegal County Council	SAC; SPA; SF;	Unassigned	Good	Good	Good	2021 or earlier	Review					View WB Page	View WB on EPA Water Map
40	IE_NW_G_078	Carndonagh Gravels	Groundwater	Donegal County Council	DWPA; SAC	Good	Good	Good	Good	2021 or earlier	Not at risk					View WB Page	View WB on EPA Water Map
39, 40	IEGBNI_NW_G_050	East Inishowen	Groundwater	Donegal County Council	DWPA; SAC	Good	Good	Good	Good	2021 or earlier	Not at risk					View WB Page	View WB on EPA Water Map
1, 39, 40	IEGBNI_NW_G_051	River Foyle	Groundwater	Donegal County Council	DWPA; SAC	Good	Good	Good	Good	2021 or earlier	Not at risk					View WB Page	View WB on EPA Water Map
1, 38, 39, 40	IEGBNI_NW_G_059	Lough Swilly	Groundwater	Donegal County Council	DWPA; SAC	Good	Good	Good	Good	2021 or earlier	Not at risk					View WB Page	View WB on EPA Water Map
40	IE_NW_40_2	Fad Meendoran	Lake	Donegal County Council	DWPA;	High	Good	Good	High	2022-2027	At risk	Hydrological, OtherSignificantImpacts	Ab, Unknown	Clonmany	LAWPRO, Restoration	View WB Page	View WB on EPA Water Map
40	IE_NW_40A010930	AUGHT_010	River	Donegal County Council	SPA;	Unassigned	Good	Moderate	Good	2022-2027	Review					View WB Page	View WB on EPA Water Map
40	IE_NW_40A080820	ARDMORE_010	River	Donegal County Council	SPA;	Unassigned	Moderate	Poor	Good	2022-2027	Review					View WB Page	View WB on EPA Water Map
40	IE_NW_40A090780	ARDAGH_010	River	Donegal County Council	SAC;	Unassigned	Poor	Poor	Good	2022-2027	Review					View WB Page	View WB on EPA Water Map
40	IE_NW_40B010200	BALLYHALLAN_010	River	Donegal County Council		Poor	Poor	Poor	Good	2022-2027	At risk	Chemical, Nutrients	Ag, DWTS	Clonmany	LAWPRO, Restoration	View WB Page	View WB on EPA Water Map
40	IE_NW_40B020400	BREDAGH_010	River	Donegal County Council		Bad	Poor	Poor	Good	2022-2027	At risk	Nutrients, Organic	UR, UWW			View WB Page	View WB on EPA Water Map
40	IE_NW_40B030400	BALLYBOE_010	River	Donegal County Council	SAC;	Poor	Good	Moderate	Good	2022-2027	At risk	Organic	DWTS	Malin	LAWPRO, Restoration	View WB Page	View WB on EPA Water Map
40	IE_NW_40B200980	BALLYCRAMSY_010	River	Donegal County Council	SAC; SPA;	Unassigned	Poor	Moderate	Good	2022-2027	Review					View WB Page	View WB on EPA Water Map
40	IE_NW_40B210940	BALLYGORMAN_010	River	Donegal County Council	SAC;	Unassigned	Good	Moderate	Good	2022-2027	Review					View WB Page	View WB on EPA Water Map
40	IE_NW_40C010100	CLONMANY_010	River	Donegal County Council		Poor	Poor	Poor	Good	2022-2027	At risk	Hydrological, Chemical, Nutrients	Ab, Ag, DWTS	Clonmany	LAWPRO, Restoration	View WB Page	View WB on EPA Water Map
40	IE_NW_40C010200	CLONMANY_020	River	Donegal County Council		Poor	Poor	Moderate	Good	2022-2027	At risk	Chemical, Nutrients	DWTS, Ag	Clonmany	LAWPRO, Restoration	View WB Page	View WB on EPA Water Map
40	IE_NW_40C010300	CLONMANY_030	River	Donegal County Council	SAC;	Unassigned	Poor	Good	Good	2021 or earlier	Review			Clonmany	LAWPRO, Restoration	View WB Page	View WB on EPA Water Map
40	IE_NW_40C020100	CULDAFF_010	River	Donegal County Council	SAC;	Poor	Poor	Poor	Good	2022-2027	At risk	Nutrients, Organic	Ag			View WB Page	View WB on EPA Water Map
40	IE_NW_40C020150	CULDAFF_020	River	Donegal County Council	SAC;	Poor	Poor	Moderate	Good	2022-2027	At risk	Nutrients, Organic	Ag			View WB Page	View WB on EPA Water Map
40	IE_NW_40C030200	CABRY_010	River	Donegal County Council		Moderate	Moderate	Good	Good	2021 or earlier	Not at risk			Roosky	LAWPRO, Restoration	View WB Page	View WB on EPA Water Map
40	IE_NW_40C040400	CLOONTAGH_010	River	Donegal County Council		Poor	Poor	Poor	Good	2022-2027	At risk	Chemical, Nutrients, Organic	Ag	Clonmany	LAWPRO, Restoration	View WB Page	View WB on EPA Water Map
40	IE_NW_40C150980	COOLY_010	River	Donegal County Council		Unassigned	Good	Poor	Good	2022-2027	Review					View WB Page	View WB on EPA Water Map
40	IE_NW_40C210960	CARROWHUGH_010	River	Donegal County Council		Unassigned	Poor	Poor	Good	2022-2027	Review					View WB Page	View WB on EPA Water Map
40	IE_NW_40C720780	Crocklummon_010	River	Donegal County Council	SAC;	Unassigned	Good	Moderate	Good	2022-2027	Review					View WB Page	View WB on EPA Water Map
40	IE_NW_40D010040	DONAGH_010	River	Donegal County Council		Good	Poor	Moderate	Good	2022-2027	At risk	Chemical	Ag	Donagh	LAWPRO, Restoration	View WB Page	View WB on EPA Water Map
40	IE_NW_40D010100	DONAGH_020	River	Donegal County Council		Poor	Poor	Poor	Good	2022-2027	At risk	Chemical	Ag	Donagh	LAWPRO, Restoration	View WB Page	View WB on EPA Water Map
40	IE_NW_40D010400	DONAGH_030	River	Donegal County Council	SAC; SPA;	Poor	Poor	Poor	Good	2022-2027	At risk	Chemical, Nutrients, Organic	UR, Ag	Donagh	LAWPRO, Restoration	View WB Page	View WB on EPA Water Map
40	IE_NW_40D020200	DRUNG_010	River	Donegal County Council	SAC; SPA;	Good	Good	Moderate	Good	2022-2027	At risk	Nutrients	Ag			View WB Page	View WB on EPA Water Map
40	IE_NW_40F010300	FAD (REDCASTLE)_010	River	Donegal County Council	DWPA; SAC;	Unassigned	Unassigned	Poor	Good	2022-2027	Review					View WB Page	View WB on EPA Water Map
40	IE_NW_40G010015	GLENNAGANNON_010	River	Donegal County Council	SAC;	Good	Good	Good	High	2022-2027	At risk	Morphological	HYMO	Glennagannon	Donegal County Council, Restoration	View WB Page	View WB on EPA Water Map
40	IE_NW_40G010200	GLENNAGANNON_020	River	Donegal County Council	SAC; SPA;	Good	Poor	Good	Good	2021 or earlier	Not at risk			Glennagannon	Donegal County Council, Restoration	View WB Page	View WB on EPA Water Map
40	IE_NW_40G020400	GREENCASTLE_010	River	Donegal County Council	DWPA;	Unassigned	Poor	Poor	Good	2022-2027	At risk	Hydrological, Nutrients, Organic	Ab, UR			View WB Page	View WB on EPA Water Map
40	IE_NW_40K010200	KEENAGH_010	River	Donegal County Council		Good	High	Good	Good	2021 or earlier	Not at risk			Malin	LAWPRO, Restoration	View WB Page	View WB on EPA Water Map
40	IE_NW_40K010400	KEENAGH_020	River	Donegal County Council	SAC;	Good	Good	Good	Good	2021 or earlier	Not at risk			Malin	LAWPRO, Restoration	View WB Page	View WB on EPA Water Map
40	IE_NW_40L010200	LONG GLEN_010	River	Donegal County Council	SAC;	Poor	Poor	Moderate	Good	2022-2027	At risk	Chemical	Ag	Lough Nastackan	LAWPRO, Restoration	View WB Page	View WB on EPA Water Map

40	IE_NW_40L030400	LOUGH NASTACKAN STREAM_010	River	Donegal County Council	SAC;	Poor	Good	Good	High	2022-2027	At risk	Nutrients, Organic	Ag	Lough Nastackan	LAWPRO, Restoration	View WB Page	View WB on EPA Water Map
40	IE_NW_40M010200	MALIN STREAM_010	River	Donegal County Council	SAC; SPA;	Poor	Poor	Poor	Good	2022-2027	At risk	Nutrients, Organic	Ag, DWTS	Malin	LAWPRO, Restoration	View WB Page	View WB on EPA Water Map
40	IE_NW_40P020200	PORTALEEN_010	River	Donegal County Council	SAC;	Poor	Poor	Poor	Good	2022-2027	At risk	Nutrients, Organic	DWTS, Ag	Malin	LAWPRO, Restoration	View WB Page	View WB on EPA Water Map
40	IE_NW_40R010300	ROOSKY_010	River	Donegal County Council	SPA;	Poor	Poor	Poor	Good	2022-2027	At risk	Nutrients, Organic	Ag	Roosky	LAWPRO, Restoration	View WB Page	View WB on EPA Water Map
40	IE_NW_40R020770	RASHENNY_010	River	Donegal County Council	SAC; SPA;	Unassigned	Good	Moderate	Good	2022-2027	Review					View WB Page	View WB on EPA Water Map
40	IE_NW_40R040490	REDFORD_GLEBE_010	River	Donegal County Council	SAC;	Unassigned	Good	Moderate	Good	2022-2027	Review					View WB Page	View WB on EPA Water Map
40	IE_NW_40S010400	STRAID_010	River	Donegal County Council	SAC; SPA;	Good	Moderate	Moderate	High	2022-2027	At risk	Chemical, Organic	Ag, Peat	Donagh	LAWPRO, Restoration	View WB Page	View WB on EPA Water Map
1, 40	UKGBNI5NW250010	Foyle and Faughan Estuaries	Transitional	N.A.	SAC; SPA;	Unassigned	Moderate	Unassigned	Good	Unknown	Review					View WB Page	View WB on EPA Water Map