



Cycle 3

HA 39 Lough Swilly Catchment Report, May 2024

Introduction

Water Quality
Summary

High Status
Objectives

Water Quality
Changes

WFD Risk

Significant
Pressures

Action

Summary
Information

Introduction

This report provides an overview of the water quality in the Lough Swilly Catchment and the pressures impacting on water quality. This report is based on data up to 2021. The latest water quality data, dashboards and maps throughout this report are available on catchments.ie and [EPA Water Map](https://www.epa.ie/water/water_quality/water_quality_maps/).

The Lough Swilly Catchment includes the area drained by all streams entering tidal water in Lough Swilly between Fanad Head and Dunaff Head, Co. Donegal, draining a total area of 965km². The largest urban centre in the catchment is Letterkenny. The other main urban centre in this catchment is Buncrana.

The Lough Swilly catchment is divided into seven subcatchments with 51 river waterbodies, nine lake waterbodies, five transitional waterbodies, three coastal waterbodies and eight groundwater bodies.

[View the Lough Swilly Catchment
on the EPA Water Map](https://www.epa.ie/water/water_quality/water_quality_maps/)

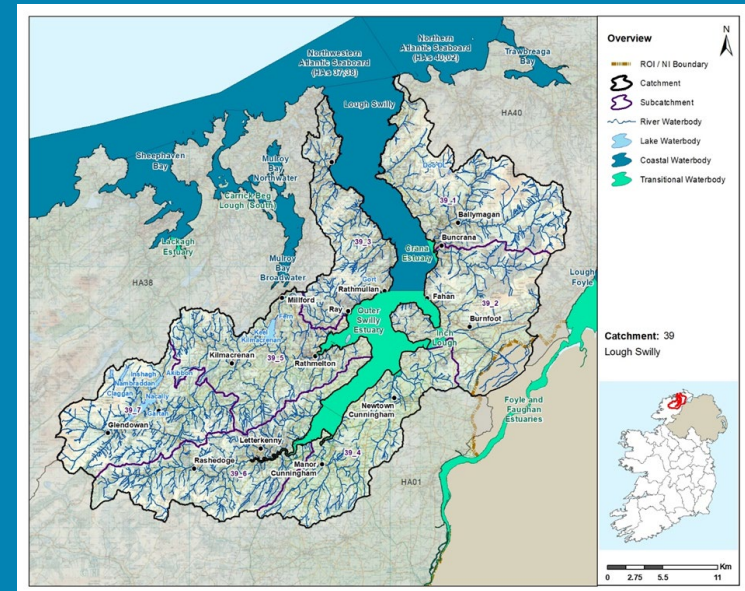
Previous Catchment Assessments

Previous catchment assessments, which provide additional historic context and information, are archived on catchments.ie:

- [Cycle 2 Catchment Assessments – published September 2018](#)
- [Cycle 3 Draft Catchment Assessments – published September 2021](#)

Online Dashboards

Links to online dashboards are provided in this report – these numbers may vary from those in this document as time progress and the online dashboards are updated based on the latest data and scientific assessments.



Overview of Subcatchments in the Lough Swilly Catchment

Water Quality Summary

Introduction

Water Quality Summary

High Status Objectives

Water Quality Changes

WFD Risk

Significant Pressures

Action

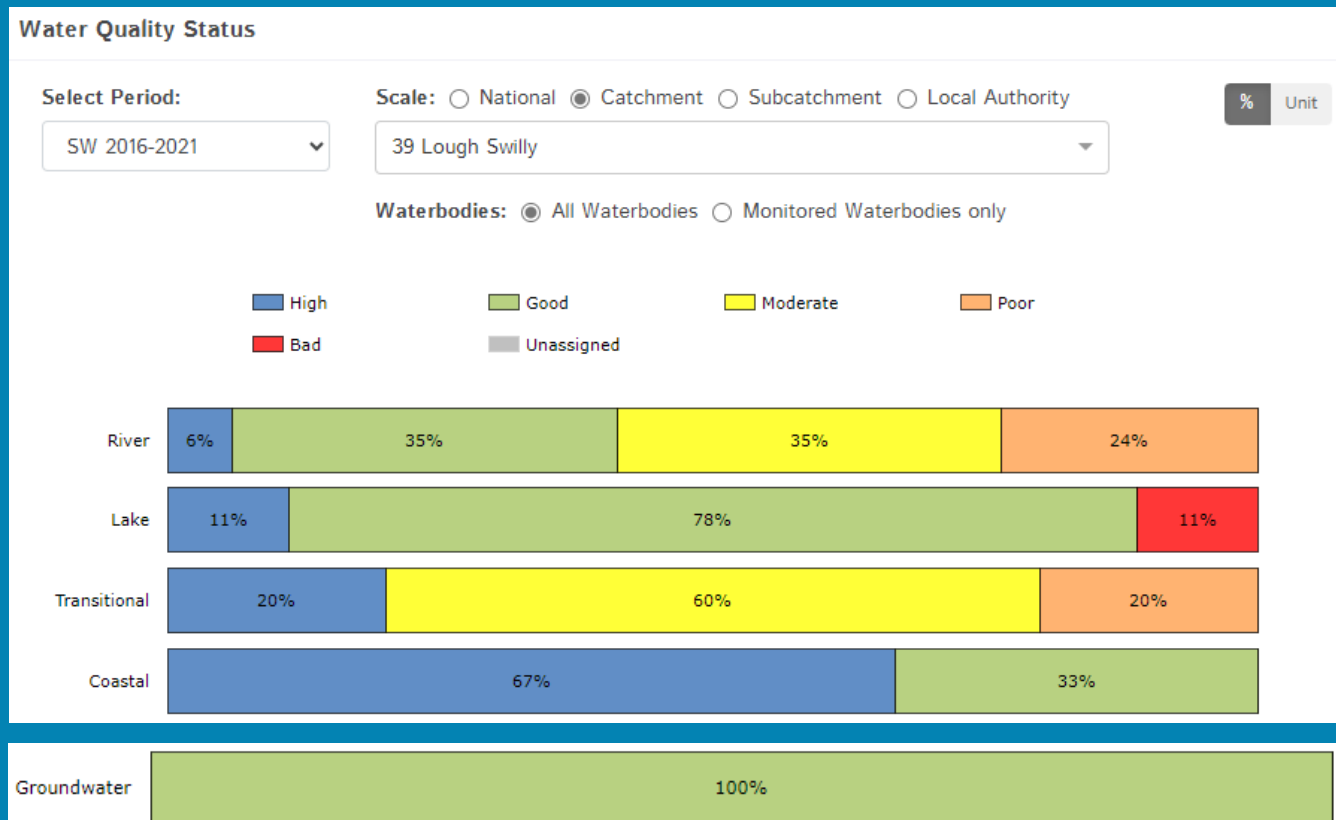
Summary Information

The dashboard below provides a breakdown of water quality status for surface and groundwater bodies in the Lough Swilly Catchment.

A total of 49% of surface waterbodies were at Good or High Ecological Status in the 2016-2021 monitoring period. One hundred percent of groundwater bodies were at Good status.

Go to EPA Water Maps for WFD Status

[EPA Water Map](#)



Water quality status 2016-2021 for the Lough Swilly Catchment.
View Online Dashboard: <https://www.catchments.ie/data/#/dashboard/waterquality>

High Status Objective Waterbodies

Introduction

High status waters are prioritised for protection and action.

There are eight waterbodies with a **High Ecological Status Objective (HSO)** in the Lough Swilly Catchment, with five currently not meeting their environmental objective of High.

Water Quality Summary

Grants for septic tank upgrades may be available in high status objective catchment areas - you can learn more and check your Eircode for eligibility here: <https://www.gov.ie/en/publication/6cc1e-domestic-waste-water-treatment-systems-septic-tanks>

[View HSO river waterbodies in this catchment.](#)

See *Status and Risk / High Status Objective* for other waterbody types.

High Status Objectives

Water Quality Changes

WFD Risk

Significant Pressures

Action

Summary Information

Water Quality Status - High Status Objective Waterbodies

Select Type:

All Surface Waters

Scale: Catchment Local Authority

39 Lough Swilly

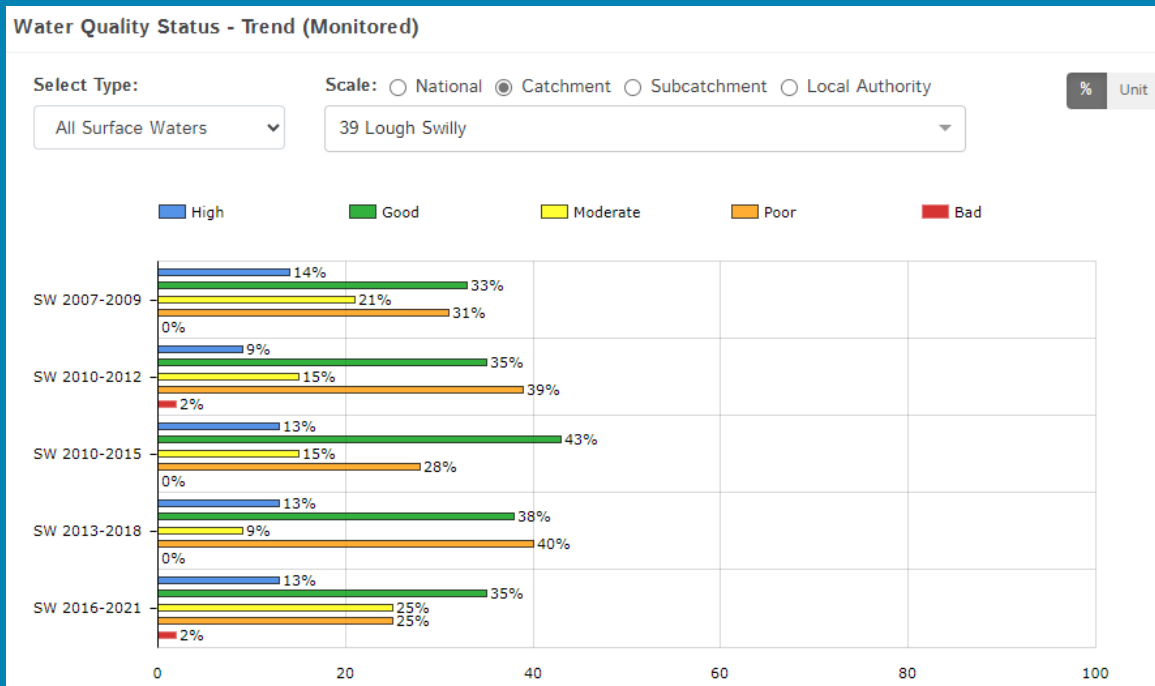
	SW 2007-2009	SW 2010-2012	SW 2010-2015	SW 2013-2018	SW 2016-2021
BULLABA_010 (River)	High	High	High	High	Good
CARN LOW_010 (River)	High	High	Good	Good	Good
Gartan (Lake)	Good	Good	High	Good	Good
GLASKEELAN_010 (River)	Moderate	Good	Good	Good	Poor
LEANNAN_010 (River)	High	High	High	High	High
Lough Swilly (Coastal)	Good	Good	High	Good	Good
MILL (DONEGAL)_010 (River)	High	High	High	High	High
Northwestern Atlantic Seaboard (HAs 37;38) (Coastal)	High	Good	High	High	High

Water quality status for High Ecological Status Objective waterbodies.

View Online Dashboard: <https://www.catchments.ie/data/#/dashboard/waterquality>

Water Quality Changes

Below illustrates the changes in ecological status in monitored surface waterbodies over the last five monitoring cycles in the Lough Swilly Catchment. Nationally while there have been improvements in some waterbodies, these have been offset by declines elsewhere.



Ecological status trends for monitored surface waterbodies over the last five monitoring cycles in the Lough Swilly Catchment.

View online dashboard: <https://www.catchments.ie/data/#/dashboard/waterquality>

A total of 37 (49%) waterbodies are currently meeting their environmental objective of Good or High Ecological Status.

	Total	Achieving Environmental Objectives (2016-2021)	High Status Environmental Objectives Waterbodies	Achieving High Status Environmental Objectives (2016-2021)
Rivers	51	19 (37%)	5	2 (40%)
Canals	-	-	-	-
Lakes	9	7 (78%)	1	0 (0%)
Transitional	5	1 (20%)	0	0 (0%)
Coastal	3	2 (67%)	2	1 (50%)
Groundwater	8	8 (100%)	0	0 (0%)

Introduction

Water Quality Summary

High Status Objectives

Water Quality Changes

WFD Risk

Significant Pressures

Action

Summary Information

Introduction

Water Quality Summary

High Status Objectives

Water Quality Changes

WFD Risk

Significant Pressures

Action

Summary Information

WFD Risk

A total of 30 (40%) waterbodies are *At Risk* of not meeting their environmental objective in the Lough Swilly Catchment, while 17 (22%) are under *Review* and 29 (38%) are *Not At Risk*.

Go to [EPA Water Map](#) to see *WFD Risk for this catchment*



WFD Risk for the Lough Swilly Catchment based on 2016-2021 data.

View Online Dashboard: <https://www.catchments.ie/data/#/dashboard/waterquality>

There are currently no heavily modified water bodies (HMWBs) in the Lough Swilly Catchment.

There are no artificial waterbodies in the Lough Swilly Catchment.

The [EPA's characterisation outcome report](#) has more information on WFD Risk

Introduction

Water Quality
Summary

High Status
Objectives

Water Quality
Changes

WFD Risk

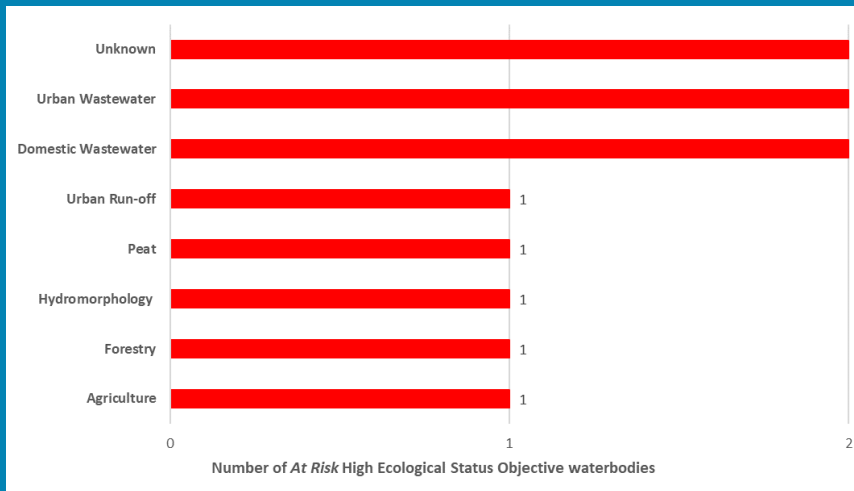
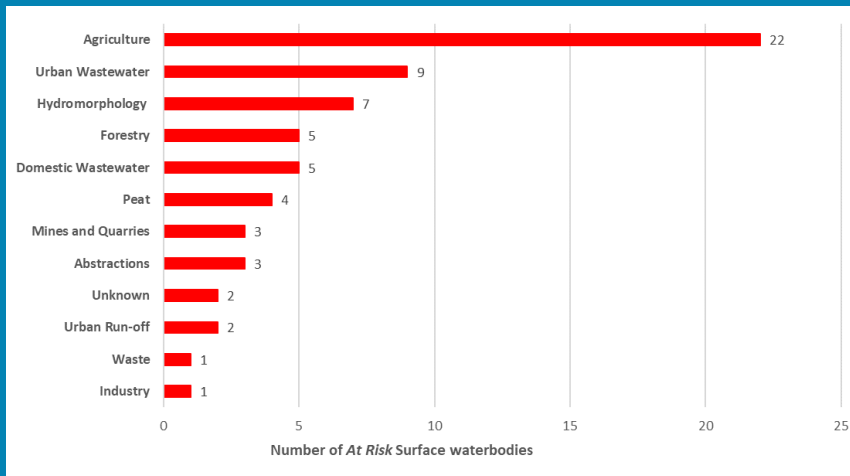
Significant
Pressures

Action

Summary
Information

Significant Pressures driving risk

Significant pressure types impacting the 30 *At Risk* surface waterbodies are broken down in the figures below, including significant pressure information for the five *At Risk* High Ecological Status Objective waterbodies.



The issues driven by these pressures are mainly nutrient pollution, chemical pollution and altered morphological condition (habitat) impacts. For more information, see <https://www.catchments.ie/data/#/dashboard/pressure?k=i351zs>.

Go to the Summary Information section to get significant pressure and issue data for At Risk waterbodies within the Lough Swilly Catchment.

Click [here](#) for more information on significant pressures

Significant Pressures

Introduction

Water Quality Summary

High Status Objectives

Water Quality Changes

WFD Risk

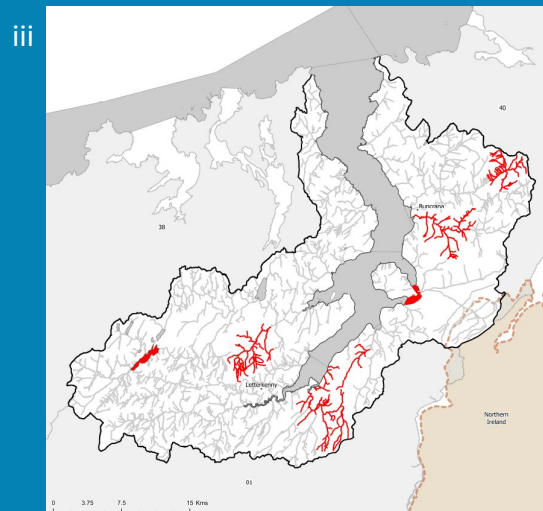
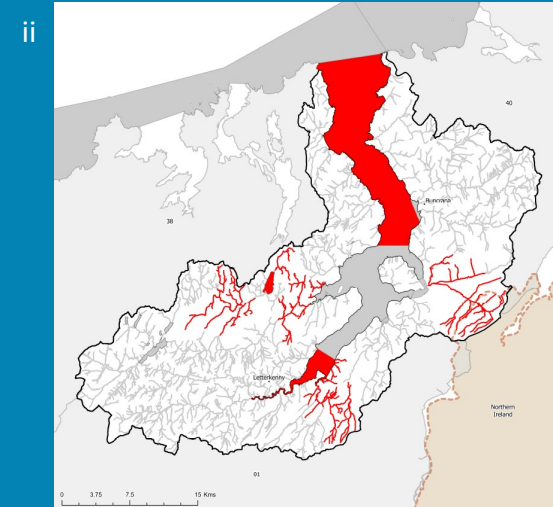
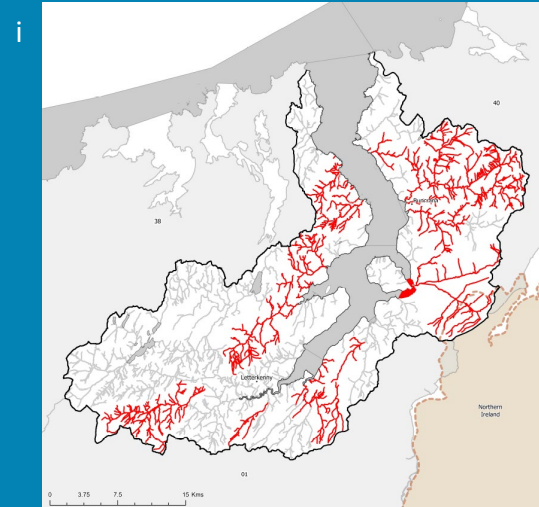
Significant Pressures

Action

Summary Information

Agriculture is the top significant pressure impacting 73% of the 30 *At Risk* waterbodies within the Lough Swilly Catchment, followed by 30% impacted by urban wastewater and 23% by hydromorphological pressures.

River Waterbody
Significant Pressure in Waterbody At Risk
Other Waterbodies
Lake, Coastal and Transitional Waterbody
Significant Pressure in Waterbody At Risk
Other Waterbodies



The catchments.ie dashboards will show all significant pressures identified for this catchment.

www.catchments.ie/data/#/dashboard/pressure

Go to the [EPA Water Maps](#) for the locations of all significant pressure types identified for this catchment

Locations of At Risk surface waterbodies impacted by i) Agriculture, ii) Urban Wastewater and iii) Hydromorphological Pressures.

Introduction

Water Quality
Summary

High Status
Objectives

Water Quality
Changes

WFD Risk

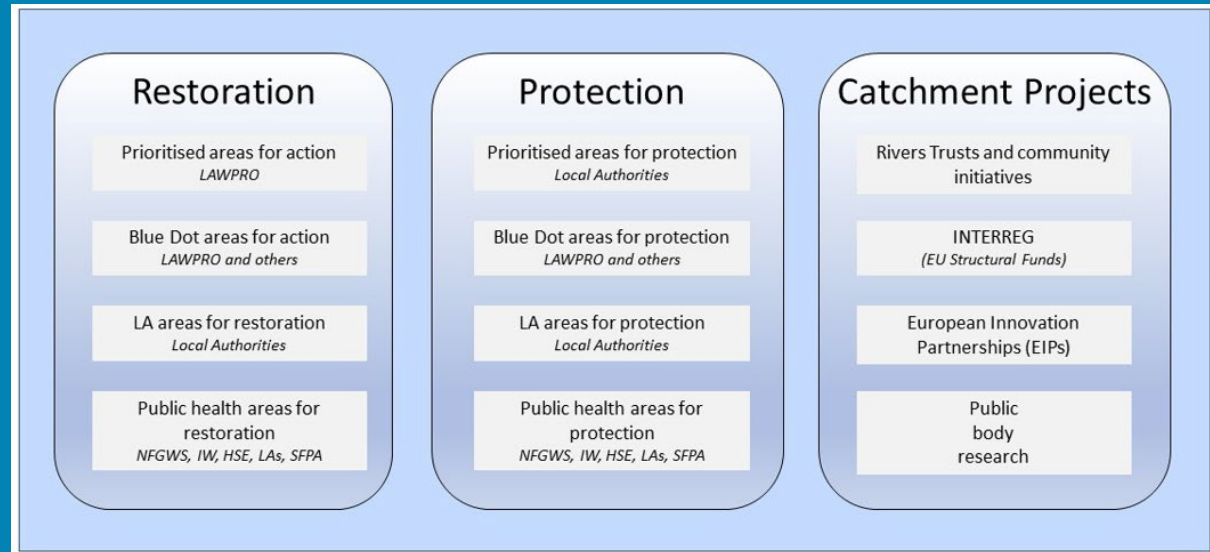
Significant
Pressures

Action

Summary
Information

Priority Areas for Action

A number of waterbodies have been prioritised through the selection of Areas for Action. There was one Priority Area for Action identified for the second river basin management planning cycle in the Lough Swilly Catchment. This has increased to a total of five Areas for Restoration and two Catchment Projects for the third cycle. ***Go to the summary information section to get Area for Action information for waterbodies within the Lough Swilly Catchment.***



Types of Areas for Action under the third cycle River Basin Management Plan

- View the current progress of Areas for Action and Summary Reports completed by LAWPRO, on catchments.ie and the EPA Water Map:
 - <https://www.catchments.ie/data/#/areaforaction>
 - https://gis.epa.ie/EPAMaps/default?eastings=?&northing=?&lid=EPA:WFD_AreasForAction
- LAWPRO have also published detailed desktop studies on Prioritised Areas for Action (PAAs) which are available their website: <https://lawwaters.ie/desktop-studies/>
- Information on Areas for Action for the second cycle is available in Cycle 2 Catchment Assessments which have been archived on catchments.ie: <https://www.catchments.ie/download/cycle-2-catchment-assessments-published-september-2018/>

Introduction

Water Quality
Summary

High Status
Objectives

Water Quality
Changes

WFD Risk

Significant
Pressures

Action

Summary
Information

Summary information for all waterbodies in the Lough Swilly Catchment

The next page provides a table with a breakdown of key information for all waterbodies in this catchment. The key is provided below. Additional information for each waterbody is available on <https://www.catchments.ie/data>, including a breakdown of status, a monitoring schedule for monitored waterbodies and downloadable chemistry results, where available.

Protected Area categories	BW: Bathing Water DW: Drinking Water Fish: Salmonid Waters NSA: Nutrient Sensitive Areas SAC: Special Area of Conservation, Natura 2000 (water dependent habitats and species) SF: Shellfish Area SPA: Special Area of Protection, Natura 2000 (water dependent habitat and species)
Significant pressure* types categories <i>* For At Risk waterbodies only</i>	Ab: Abstractions Ag: Agriculture Aq: Aquaculture At: Atmospheric DWW: Domestic Wastewater For: Forestry HPS: Historically polluted sites HYMO: Hydromorphology Ind: Industry IS: Invasive Species M+Q: Mines and Quarries Peat: Peat Drainage and Extraction UR: Urban Run-Off UWW: Urban Wastewater Was: Waste WT: Water Treatment

Catchment Code	Waterbody (WB) Code	WB Name	WB Type	Local Authority	Protected Area	Status 10-15	Status 13-18	Status 16-21	Environmental Objective	Environmental Objective Date	WFD Risk 16-21	Significant Issue(s)	Significant Pressure(s)	Area for Action (AFA)	AFA (lead, type)	Link to WB page on catchments.ie	Link to WB on EPA Water Map
37, 38, 39, 40	IE_NW_100_0000	Northwestern Atlantic Seaboard (HAs 37;38)	Coastal	Donegal County Council	BW; SAC; SPA; SF;	High	High	High	High	2021 or earlier	Not at risk					View WB Page	View WB on EPA Water Map
38, 39	IE_NW_220_0000	Lough Swilly	Coastal	Donegal County Council	BW; SAC; SPA; SF;	High	Good	Good	High	2022-2027	At risk	Nutrients	DWTS, UR, UWW			View WB Page	View WB on EPA Water Map
39, 40	IE_NW_230_0000	Northern Atlantic Seaboard (HAs 40;02)	Coastal	Donegal County Council	BW; SAC; SPA;	Unassigned	High	High	Good	2021 or earlier	Not at risk					View WB Page	View WB on EPA Water Map
1, 37, 38, 39	IE_NW_G_049	Northwest Donegal	Groundwater	Donegal County Council	DWPA; SAC	Good	Good	Good	Good	2021 or earlier	Not at risk					View WB Page	View WB on EPA Water Map
1, 39	IE_NW_G_052	Manor Cunningham	Groundwater	Donegal County Council	DWPA; SAC	Good	Good	Good	Good	2021 or earlier	Not at risk					View WB Page	View WB on EPA Water Map
1, 39	IE_NW_G_054	Raphoe	Groundwater	Donegal County Council	DWPA; SAC	Good	Good	Good	Good	2021 or earlier	Not at risk					View WB Page	View WB on EPA Water Map
1, 39	IE_NW_G_058	Upper Deelee	Groundwater	Donegal County Council	DWPA	Good	Good	Good	Good	2021 or earlier	Not at risk					View WB Page	View WB on EPA Water Map
1, 37, 38, 39	IEGBNI_NW_G_048	Ballybofey	Groundwater	Donegal County Council	DWPA; SAC	Good	Good	Good	Good	2021 or earlier	Not at risk					View WB Page	View WB on EPA Water Map
39, 40	IEGBNI_NW_G_050	East Inishowen	Groundwater	Donegal County Council	DWPA; SAC	Good	Good	Good	Good	2021 or earlier	Not at risk					View WB Page	View WB on EPA Water Map
1, 39, 40	IEGBNI_NW_G_051	River Foyle	Groundwater	Donegal County Council	DWPA; SAC	Good	Good	Good	Good	2021 or earlier	Not at risk					View WB Page	View WB on EPA Water Map
1, 38, 39, 40	IEGBNI_NW_G_059	Lough Swilly	Groundwater	Donegal County Council	DWPA; SAC	Good	Good	Good	Good	2021 or earlier	Not at risk					View WB Page	View WB on EPA Water Map
39	IE_NW_39_10	Inshagh	Lake	Donegal County Council	SAC; SPA;	Unassigned	High	Good	Good	2021 or earlier	Review			Leannan	LAWPRO, Restoration	View WB Page	View WB on EPA Water Map
39	IE_NW_39_11	Akibbon	Lake	Donegal County Council	SAC; SPA;	Good	Good	Good	Good	2021 or earlier	Not at risk			Leannan	LAWPRO, Restoration	View WB Page	View WB on EPA Water Map
39	IE_NW_39_12	Gartan	Lake	Donegal County Council	SAC; SPA;	High	Good	Good	High	2022-2027	At risk	Morphological	HYMO	Leannan	LAWPRO, Restoration	View WB Page	View WB on EPA Water Map
39	IE_NW_39_13	Fern	Lake	Donegal County Council	SAC; Fish; SPA;	Poor	Poor	Bad	Good	2022-2027	At risk	Nutrients, Organic	UWW	Leannan	LAWPRO, Restoration	View WB Page	View WB on EPA Water Map
39	IE_NW_39_44	Gort	Lake	Donegal County Council	DWPA;	Unassigned	Unassigned	Good	Good	2021 or earlier	Not at risk					View WB Page	View WB on EPA Water Map
39	IE_NW_39_47	Nambraddan	Lake	Donegal County Council	SAC; SPA;	Unassigned	High	Good	Good	2021 or earlier	Review			Leannan	LAWPRO, Restoration	View WB Page	View WB on EPA Water Map
39	IE_NW_39_51	Claggan	Lake	Donegal County Council	SAC; SPA;	Unassigned	High	Good	Good	2021 or earlier	Review			Leannan	LAWPRO, Restoration	View WB Page	View WB on EPA Water Map
39	IE_NW_39_52	Doo DL	Lake	Donegal County Council	DWPA;	Unassigned	High	High	Good	2021 or earlier	Not at risk					View WB Page	View WB on EPA Water Map
39	IE_NW_39_68	Nacally	Lake	Donegal County Council	SAC;	Unassigned	Unassigned	Good	Good	2021 or earlier	Not at risk					View WB Page	View WB on EPA Water Map
39	IE_NW_39A010400	AGHAWHEEL_010	River	Donegal County Council		Poor	Poor	Poor	Good	2022-2027	At risk	Chemical, Nutrients	Ag	Crana	LAWPRO, Restoration	View WB Page	View WB on EPA Water Map
39	IE_NW_39B010100	BULLABA_010	River	Donegal County Council	SAC; SPA;	High	High	Good	High	2022-2027	At risk	UnknownImpactType	Unknown			View WB Page	View WB on EPA Water Map
39	IE_NW_39B020200	BURNFOOT_010	River	Donegal County Council		Poor	Good	Moderate	Good	2022-2027	At risk	Sediment, Hydrological, Nutrients, Organic	Ag, M+Q	Burnfoot Skeoge	LAWPRO, Restoration	View WB Page	View WB on EPA Water Map
39	IE_NW_39B020600	BURNFOOT_020	River	Donegal County Council		Moderate	Poor	Poor	Good	2022-2027	At risk	Nutrients, Organic	Ag, UWW	Burnfoot Skeoge	LAWPRO, Restoration	View WB Page	View WB on EPA Water Map
39	IE_NW_39B620890	BALLYNASHANNAGH_010	River	Donegal County Council	SAC; SPA;	Unassigned	Unassigned	Good	Good	2021 or earlier	Review					View WB Page	View WB on EPA Water Map
39	IE_NW_39C010200	CASHELNACOR_010	River	Donegal County Council		Poor	Poor	Moderate	Good	2022-2027	At risk	Chemical, Nutrients	Ag, DWTS	Crana	LAWPRO, Restoration	View WB Page	View WB on EPA Water Map
39	IE_NW_39C020100	CRANA_010	River	Donegal County Council		Poor	Poor	Moderate	Good	2022-2027	At risk	Hydrological, Morphological, Chemical, UnknownImpactType	For, Ag, Peat	Crana	LAWPRO, Restoration	View WB Page	View WB on EPA Water Map
39	IE_NW_39C020300	CRANA_020	River	Donegal County Council		Poor	Poor	Poor	Good	2022-2027	At risk	Hydrological, Morphological, Chemical	Ag, Ab, Peat	Crana	LAWPRO, Restoration	View WB Page	View WB on EPA Water Map
39	IE_NW_39C020500	CRANA_030	River	Donegal County Council	SAC;	Good	Poor	Poor	Good	2022-2027	At risk	Chemical	Ag	Crana	LAWPRO, Restoration	View WB Page	View WB on EPA Water Map
39	IE_NW_39C030250	CORRAVADDY BURN_010	River	Donegal County Council		Poor	Poor	Moderate	Good	2022-2027	At risk	Acidification, Morphological, Chemical, Nutrients, UnknownImpactType	Ag, For, M+Q			View WB Page	View WB on EPA Water Map
39	IE_NW_39C910930	CARROWEN_010	River	Donegal County Council	SAC; SPA;	Unassigned	Poor	Moderate	Good	2022-2027	Review					View WB Page	View WB on EPA Water Map
39	IE_NW_39D010500	DRUMHALLAGH_010	River	Donegal County Council	SAC;	Moderate	Good	Moderate	Good	2022-2027	At risk	Nutrients	Ag	Drumhallagh	Donegal County Council, Restoration	View WB Page	View WB on EPA Water Map
39	IE_NW_39D020200	DOOBALLAGH BURN_010	River	Donegal County Council		Good	Good	Good	Good	2021 or earlier	Not at risk					View WB Page	View WB on EPA Water Map
39	IE_NW_39D030600	DRUMBARNET STREAM_010	River	Donegal County Council		Poor	Poor	Poor	Good	2022-2027	At risk	Hydrological, Morphological, Nutrients	HYMO, Ag			View WB Page	View WB on EPA Water Map
39	IE_NW_39G010200	GLASHAGH (UPPER)_010	River	Donegal County Council	SAC; Fish;	Good	Good	Good	Good	2021 or earlier	Not at risk					View WB Page	View WB on EPA Water Map
39	IE_NW_39G010400	GLASHAGH (UPPER)_020	River	Donegal County Council	SAC; Fish;	Good	Good	Good	Good	2021 or earlier	Not at risk					View WB Page	View WB on EPA Water Map

39	IE_NW_39G020200	GLASHAGH (LOWER)_010	River	Donegal County Council	Fish;	Moderate	Poor	Moderate	Good	2022-2027	At risk	Sediment, Nutrients	HYMO, Ind, Ag, DWTS	Leannan	LAWPRO, Restoration	View WB Page	View WB on EPA Water Map
39	IE_NW_39G030180	GLENALLA_010	River	Donegal County Council	SAC;	Good	Good	Moderate	Good	2022-2027	At risk	UnknownImpactType	Ag			View WB Page	View WB on EPA Water Map
39	IE_NW_39G040300	GLENVAR_010	River	Donegal County Council	SPA;	Good	Moderate	Poor	Good	2022-2027	At risk	Nutrients	Ag			View WB Page	View WB on EPA Water Map
39	IE_NW_39G050100	GLASKEELAN_010	River	Donegal County Council	SAC; SPA;	Good	Good	Poor	High	2022-2027	At risk	Hydrological, Morphological, ElevatedTemperature, Nutrients, UnknownImpactType	For, Unknown, Peat	Leannan	LAWPRO, Restoration	View WB Page	View WB on EPA Water Map
39	IE_NW_39G110630	GORTYARRIGAN_010	River	Donegal County Council	SAC;	Unassigned	Good	Moderate	Good	2022-2027	Review					View WB Page	View WB on EPA Water Map
39	IE_NW_39G170760	GLACK_or_BOHULLION_010	River	Donegal County Council	SAC; SPA;	Unassigned	Good	Good	Good	2021 or earlier	Review					View WB Page	View WB on EPA Water Map
39	IE_NW_39G380790	GLAR_010	River	Donegal County Council	DWPA; SAC; SPA;	Unassigned	Moderate	Poor	Good	2022-2027	Review					View WB Page	View WB on EPA Water Map
39	IE_NW_39K240610	KNOCKYBRIN_010	River	Donegal County Council	SAC; SPA;	Unassigned	Unassigned	Moderate	Good	2022-2027	Review					View WB Page	View WB on EPA Water Map
39	IE_NW_39L010100	LEANNAN_010	River	Donegal County Council	SAC; Fish; SPA;	High	High	High	High	2021 or earlier	Not at risk			Leannan	LAWPRO, Restoration	View WB Page	View WB on EPA Water Map
39	IE_NW_39L010200	LEANNAN_020	River	Donegal County Council	SAC; Fish;	Good	Good	High	Good	2021 or earlier	Not at risk			Leannan	LAWPRO, Restoration	View WB Page	View WB on EPA Water Map
39	IE_NW_39L010250	LEANNAN_030	River	Donegal County Council	SAC; Fish;	Good	Good	Good	Good	2021 or earlier	Not at risk			Leannan	LAWPRO, Restoration	View WB Page	View WB on EPA Water Map
39	IE_NW_39L010300	LEANNAN_040	River	Donegal County Council	SAC; Fish;	Good	Good	Good	Good	2021 or earlier	Not at risk			Leannan	LAWPRO, Restoration	View WB Page	View WB on EPA Water Map
39	IE_NW_39L010500	LEANNAN_050	River	Donegal County Council	SAC; Fish; SPA;	Moderate	Good	Moderate	Good	2022-2027	At risk	Nutrients, Organic	UWW	Leannan	LAWPRO, Restoration	View WB Page	View WB on EPA Water Map
39	IE_NW_39L010600	LEANNAN_060	River	Donegal County Council	SAC; Fish; SPA;	Good	Good	Good	Good	2021 or earlier	Not at risk			Leannan	LAWPRO, Restoration	View WB Page	View WB on EPA Water Map
39	IE_NW_39L012000	CARN LOW_010	River	Donegal County Council	SAC; Fish; SPA;	Good	Good	Good	High	2022-2027	At risk	Nutrients, Organic	Ag, DWTS, UWW	Leannan	LAWPRO, Restoration	View WB Page	View WB on EPA Water Map
39	IE_NW_39L020100	LURGY_010	River	Donegal County Council	SAC; Fish; SPA;	Good	Poor	Good	Good	2021 or earlier	Not at risk			Leannan	LAWPRO, Restoration	View WB Page	View WB on EPA Water Map
39	IE_NW_39L050600	LESLIE HILL STREAM_010	River	Donegal County Council		Good	Poor	Good	Good	2021 or earlier	Not at risk					View WB Page	View WB on EPA Water Map
39	IE_NW_39L050660	LESLIE HILL STREAM_020	River	Donegal County Council	SAC; SPA;	Unassigned	Moderate	Moderate	Good	2022-2027	At risk	Hydrological, Morphological, Nutrients, Organic	HYMO, Ag, UWW			View WB Page	View WB on EPA Water Map
39	IE_NW_39L120930	LENAN_010	River	Donegal County Council	SAC;	Unassigned	Good	Good	Good	2021 or earlier	Review					View WB Page	View WB on EPA Water Map
39	IE_NW_39L170710	LISFANNAN_010	River	Donegal County Council	SAC; SPA;	Unassigned	Good	Moderate	Good	2022-2027	Review					View WB Page	View WB on EPA Water Map
39	IE_NW_39M010300	MAGGY'S BURN_010	River	Donegal County Council	DWPA; SAC; Fish; SPA;	Poor	Poor	Poor	Good	2022-2027	At risk	Hydrological, Nutrients, Organic	Ab, UWW	Leannan	LAWPRO, Restoration	View WB Page	View WB on EPA Water Map
39	IE_NW_39M020050	MILL (DONEGAL)_010	River	Donegal County Council		High	High	High	High	2021 or earlier	Not at risk			Mill (Donegal)_Blue Dot	LAWPRO, Restoration	View WB Page	View WB on EPA Water Map
39	IE_NW_39M020300	MILL (DONEGAL)_020	River	Donegal County Council		Moderate	Poor	Poor	Good	2022-2027	At risk	Sediment, Acidification, Hydrological, Morphological, Chemical	For, Ag, HYMO, M+Q, Peat	Mill (Donegal)_Blue Dot	LAWPRO, Restoration	View WB Page	View WB on EPA Water Map
39	IE_NW_39M130990	MILL_BROOK_010	River	Donegal County Council	SAC; SPA;	Unassigned	Unassigned	Moderate	Good	2022-2027	Review					View WB Page	View WB on EPA Water Map
39	IE_NW_39N050990	NEWMILL_010	River	Donegal County Council	SAC; SPA;	Unassigned	Poor	Moderate	Good	2022-2027	Review			Leannan	LAWPRO, Restoration	View WB Page	View WB on EPA Water Map
39	IE_NW_39O020100	OWENERK_010	River	Donegal County Council		Good	Poor	Good	Good	2021 or earlier	Not at risk					View WB Page	View WB on EPA Water Map
39	IE_NW_39O020200	OWENERK_020	River	Donegal County Council	SAC;	Good	Poor	Good	Good	2021 or earlier	Not at risk					View WB Page	View WB on EPA Water Map
39	IE_NW_39O030100	OWENWEE (LOUGH GARTAN)_010	River	Donegal County Council	SAC; SPA;	Moderate	Good	Good	Good	2021 or earlier	Review					View WB Page	View WB on EPA Water Map
39	IE_NW_39O040400	OWENBOY (CRANA)_010	River	Donegal County Council		Poor	Poor	Moderate	Good	2022-2027	At risk	Chemical, Nutrients	Ag, Was	Crana	LAWPRO, Restoration	View WB Page	View WB on EPA Water Map
39	IE_NW_39O050100	OWENNASOP_010	River	Donegal County Council		Poor	Poor	Moderate	Good	2022-2027	At risk	Hydrological, Morphological, Chemical	Ag, HYMO, Ab	Crana	LAWPRO, Restoration	View WB Page	View WB on EPA Water Map
39	IE_NW_39S020050	SWILLY_010	River	Donegal County Council	SAC; Fish;	Good	Moderate	Poor	Good	2022-2027	At risk	Chemical	Ag, For			View WB Page	View WB on EPA Water Map
39	IE_NW_39S020100	SWILLY_020	River	Donegal County Council	Fish;	Good	Good	Moderate	Good	2022-2027	At risk	Nutrients	Ag			View WB Page	View WB on EPA Water Map
39	IE_NW_39S020200	SWILLY_030	River	Donegal County Council	Fish;	Good	High	Good	Good	2021 or earlier	Not at risk					View WB Page	View WB on EPA Water Map
39	IE_NW_39S020300	Swilly (Donegal)_010	River	Donegal County Council	SAC; Fish; SPA;	Unassigned	Poor	Good	Good	2021 or earlier	Review					View WB Page	View WB on EPA Water Map
39	UKGBNI1NW393901002	SKEOGE_010	River	Donegal County Council	SAC; SPA;	Poor	Poor	Poor	Good	2022-2027	At risk	Nutrients, Organic	UWW, Ag	Burnfoot Skeoge	LAWPRO, Restoration	View WB Page	View WB on EPA Water Map
39	IE_NW_220_0100	Swilly Estuary	Transitional	Donegal County Council	SAC; Fish; SPA; SF;	Moderate	Moderate	Poor	Good	2022-2027	At risk	Nutrients, Organic	UWW, DWTS, UR			View WB Page	View WB on EPA Water Map
39	IE_NW_220_0200	Blanket Nook Lough	Transitional	Donegal County Council	SAC; SPA;	Unassigned	Poor	Moderate	Good	2022-2027	Review					View WB Page	View WB on EPA Water Map
39	IE_NW_220_0300	Inch Lough	Transitional	Donegal County Council	SAC; SPA;	Poor	Moderate	Moderate	Good	2022-2027	At risk	Morphological, Nutrients, Organic	HYMO, Ag			View WB Page	View WB on EPA Water Map

39	IE_NW_220_0400	Crana Estuary	Transitional	Donegal County Council	BW; SAC;	Unassigned	Moderate	Moderate	Good	2022-2027	Review					View WB Page	View WB on EPA Water Map
39	IE_NW_220_0500	Outer Swilly Estuary	Transitional	Donegal County Council	SAC; Fish; SPA; SF;	Unassigned	High	High	Good	2021 or earlier	Not at risk					View WB Page	View WB on EPA Water Map