



Cycle 3

HA 38 Gweebarra-Sheephaven Catchment Report, May 2024

Introduction

Water Quality
Summary

High Status
Objectives

Water Quality
Changes

WFD Risk

Significant
Pressures

Action

Summary
Information

Introduction

This report provides an overview of the water quality in the Gweebarra-Sheephaven Catchment and the pressures impacting on water quality. This report is based on data up to 2021. The latest water quality data, dashboards and maps throughout this report are available on catchments.ie and [EPA Water Map](https://epa.maps.ie).

The Gweebarra-Sheephaven Catchment includes the area drained by all streams entering tidal water in Gweebarra River, Sheephaven Bay and between Rossan Point and Fanad Head, Co. Donegal, draining a total area of 1,450km². The largest urban centre in the catchment is Falcarragh. The other main urban centres in this catchment are Glenties, Dunglow, Dunfanaghy, Creeslough and Carrowkeel.

The Gweebarra-Sheephaven catchment is divided into nine subcatchments with 88 river waterbodies, 83 lake waterbodies, ten transitional waterbodies, 14 coastal waterbodies and five groundwater bodies.

[View the Gweebarra-Sheephaven Catchment on the EPA Water Map](#)

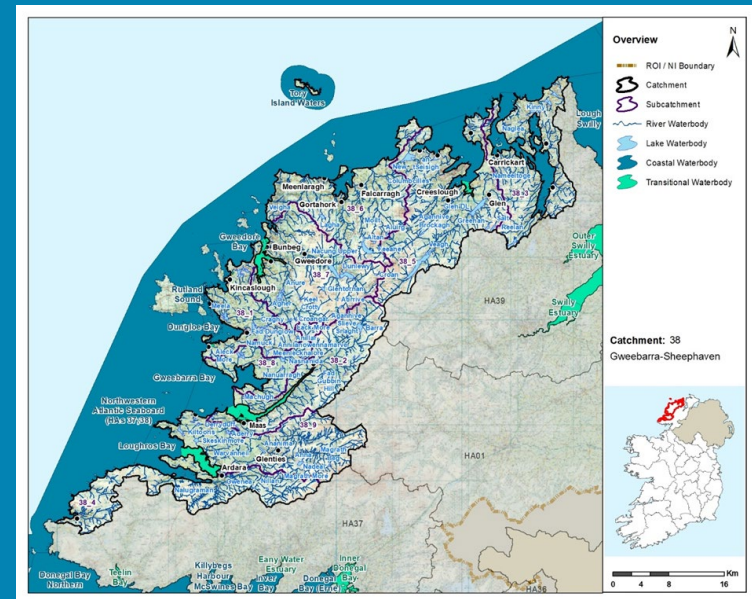
Previous Catchment Assessments

Previous catchment assessments, which provide additional historic context and information, are archived on catchments.ie:

- [Cycle 2 Catchment Assessments – published September 2018](#)
- [Cycle 3 Draft Catchment Assessments – published September 2021](#)

Online Dashboards

Links to online dashboards are provided in this report – these numbers may vary from those in this document as time progress and the online dashboards are updated based on the latest data and scientific assessments.



Overview of Subcatchments in the Gweebarra-Sheephaven Catchment

Water Quality Summary

Introduction

Water Quality Summary

High Status Objectives

Water Quality Changes

WFD Risk

Significant Pressures

Action

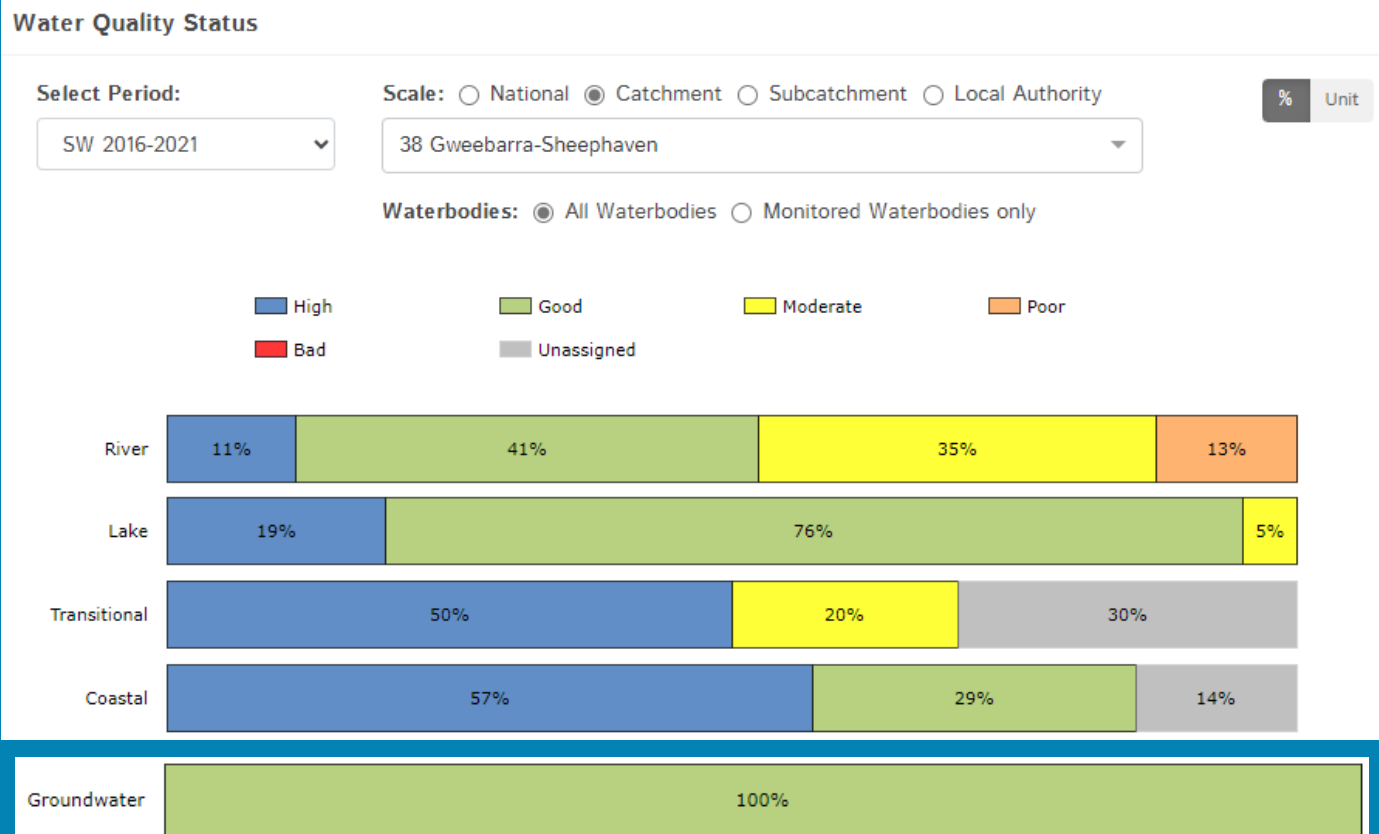
Summary Information

The dashboard below provides a breakdown of water quality status for surface and groundwater bodies in the Gweebarra-Sheephaven Catchment.

A total of 73% of surface waterbodies were at Good or High Ecological Status in the 2016-2021 monitoring period. One hundred percent of groundwater bodies were at Good status.

Go to EPA Water Maps for WFD Status

[EPA Water Map](#)



Water quality status 2016-2021 for the Gweebarra-Sheephaven Catchment.
View Online Dashboard: <https://www.catchments.ie/data/#/dashboard/waterquality>

High Status Objective Waterbodies

Introduction

High status waters are prioritised for protection and action.

There are 17 waterbodies with a **High Ecological Status Objective** (HSO) in the Gweebarra-Sheephaven Catchment, with ten currently not meeting their environmental objective of High.

Water Quality Summary

Grants for septic tank upgrades may be available in high status objective catchment areas - you can learn more and check your Eircode for eligibility here: <https://www.gov.ie/en/publication/6cc1e-domestic-waste-water-treatment-systems-septic-tanks>

[View HSO river waterbodies in this catchment.](#)

See *Status and Risk / High Status Objective* for other waterbody types.

High Status Objectives

Water Quality Changes

	SW 2007-2009	SW 2010-2012	SW 2010-2015	SW 2013-2018	SW 2016-2021
Agannive Brockagh (Lake)	High	Unassigned	Unassigned	High	Good
Anure (Lake)	High	Good	Good	Good	Good
Barra (Lake)	Good	High	Good	Good	Good
CRONANIV BURN_010 (River)	Good	Good	High	High	Good
DEVLIN (DONEGAL)_010 (River)	High	Good	High	High	High
Dunglow (Lake)	Good	Good	High	Good	Good
Greenan (Lake)	High	High	High	Good	Good
Gweebarra Bay (Coastal)	High	Moderate	Good	Good	High

WFD Risk

Significant Pressures

Action

Summary Information

Water quality status for High Ecological Status Objective waterbodies.

View Online Dashboard: <https://www.catchments.ie/data/#/dashboard/waterquality>

Introduction

Water Quality
Summary

High Status
Objectives

Water Quality
Changes

WFD Risk

Significant
Pressures

Action

Summary
Information

High Status Objective Waterbodies

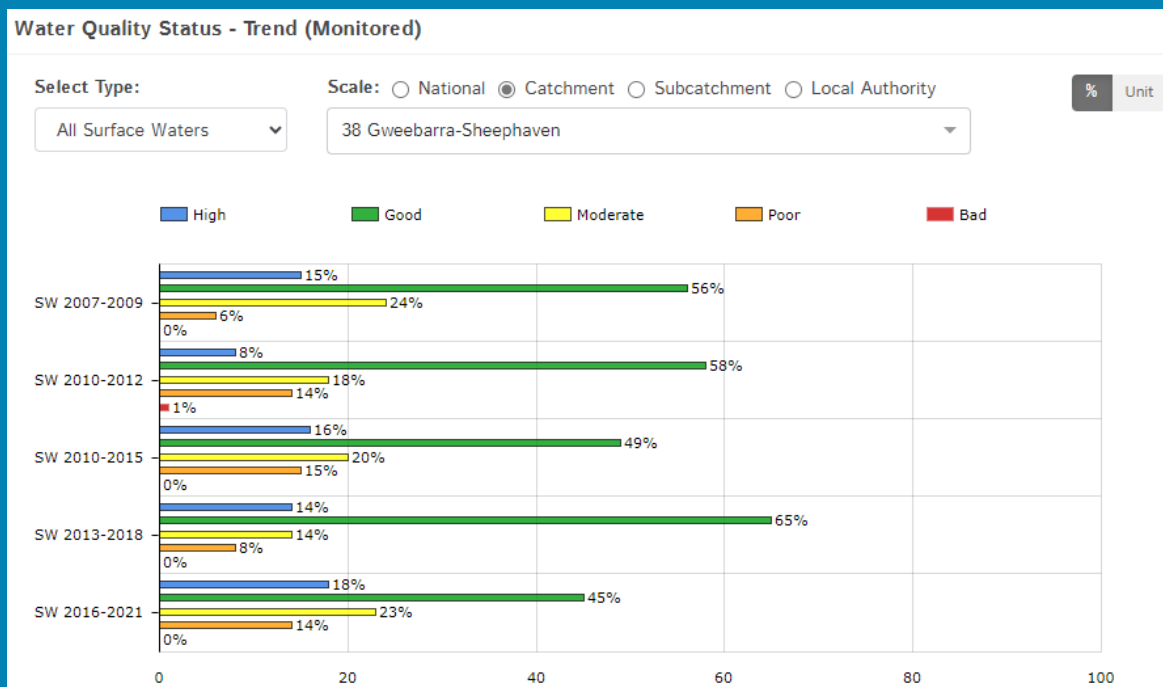
	SW 2007-2009	SW 2010-2012	SW 2010-2015	SW 2013-2018	SW 2016-2021
Gweebarra Estuary (Transitional)	High	Moderate	Good	Good	High
LOUGH AGHER STREAM_010 (River)	High	High	Good	Good	Good
Lough Swilly (Coastal)	Good	Good	High	Good	Good
Northwestern Atlantic Seaboard (HAS 37;38) (Coastal)	High	Good	High	High	High
OWENCARROW_020 (River)	High	Unassigned	High	High	High
OWENVEAGH_010 (River)	High	High	High	High	High
OWENWEE (DOOCHARRY)_010 (River)	Good	Good	High	High	Good
OWENWEE (GLEN LOUGH)_010 (River)	Good	High	High	High	High
Veagh (Lake)	High	Good	Good	Good	Good

Water quality status for High Ecological Status Objective waterbodies.

View Online Dashboard: <https://www.catchments.ie/data/#/dashboard/waterquality>

Water Quality Changes

Below illustrates the changes in ecological status in monitored surface waterbodies over the last five monitoring cycles in the Gweebarra-Sheephaven Catchment. Nationally while there have been improvements in some waterbodies, these have been offset by declines elsewhere.



Ecological status trends for monitored surface waterbodies over the last five monitoring cycles in the Gweebarra-Sheephaven Catchment.

View online dashboard: <https://www.catchments.ie/data/#/dashboard/waterquality>

A total of 137 (69%) waterbodies are currently meeting their environmental objective of Good or High Ecological Status.

	Total	Achieving Environmental Objectives (2016-2021)	High Status Environmental Objectives Waterbodies	Achieving High Status Environmental Objectives (2016-2021)
Rivers	88	43 (49%)	7	4 (57%)
Canals	-	-	-	-
Lakes	83	73 (88%)	6	0 (0%)
Transitional	10	5 (50%)	1	1 (100%)
Coastal	14	11 (79%)	3	2 (67%)
Groundwater	5	5 (100%)	0	0 (0%)

Introduction

Water Quality Summary

High Status Objectives

Water Quality Changes

WFD Risk

Significant Pressures

Action

Summary Information

WFD Risk

Introduction

Water Quality Summary

High Status Objectives

Water Quality Changes

WFD Risk

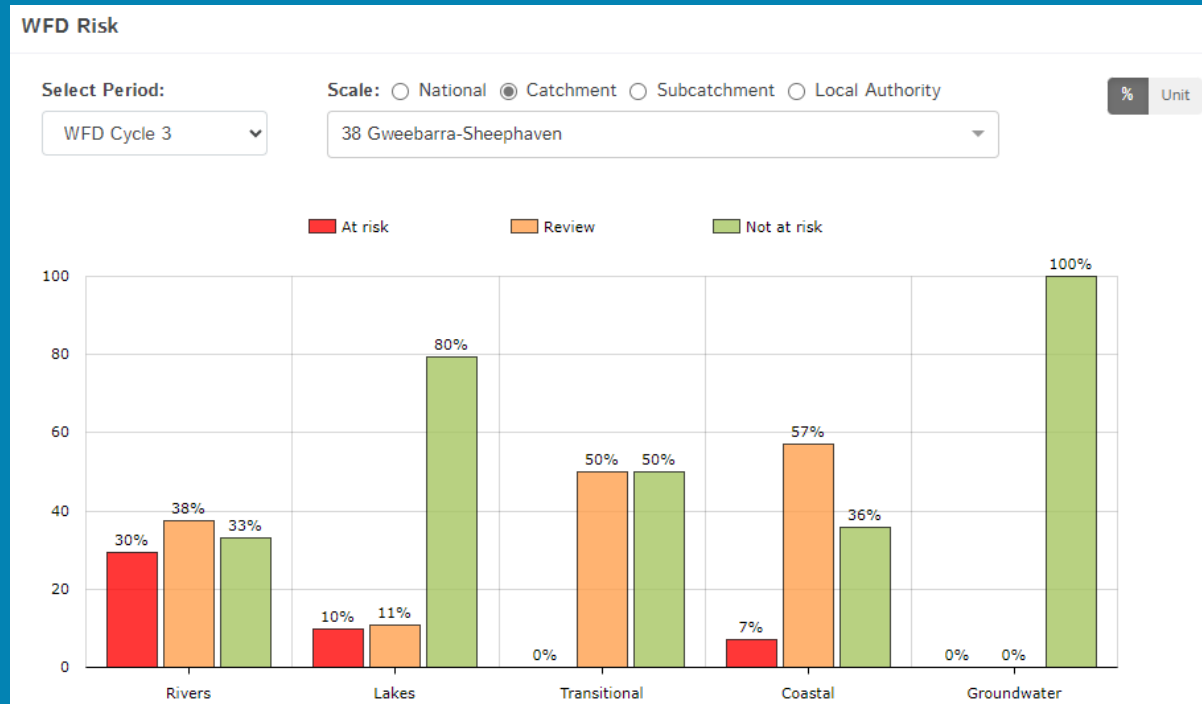
Significant Pressures

Action

Summary Information

A total of 35 (18%) waterbodies are *At Risk* of not meeting their environmental objective in the Gweebarra-Sheephaven Catchment, while 55 (27%) are under *Review* and 110 (55%) are *Not At Risk*.

Go to [EPA Water Map](#) to see *WFD Risk for this catchment*



WFD Risk for the Gweebarra-Sheephaven Catchment based on 2016-2021 data.

View Online Dashboard: <https://www.catchments.ie/data/#/dashboard/waterquality>

There are currently three heavily modified waterbodies (HMWBs) in the Gweebarra-Sheephaven Catchment (Nacung Upper, Salt and Dunlewy). They are under *Review* (Nacung Upper and Dunlewy) and *Not at Risk* (Salt).

There are no artificial waterbodies in the Gweebarra-Sheephaven Catchment.

The [EPA's characterisation outcome report](#) has more information on WFD Risk

Introduction

Water Quality
Summary

High Status
Objectives

Water Quality
Changes

WFD Risk

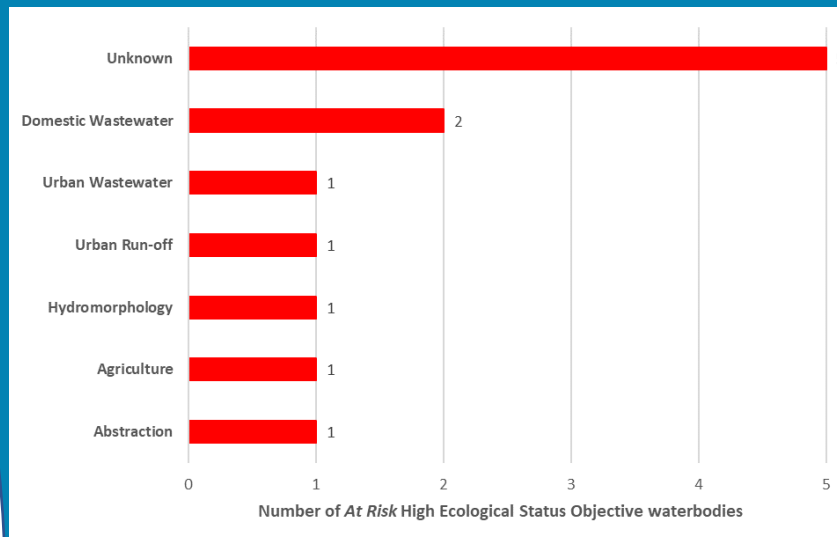
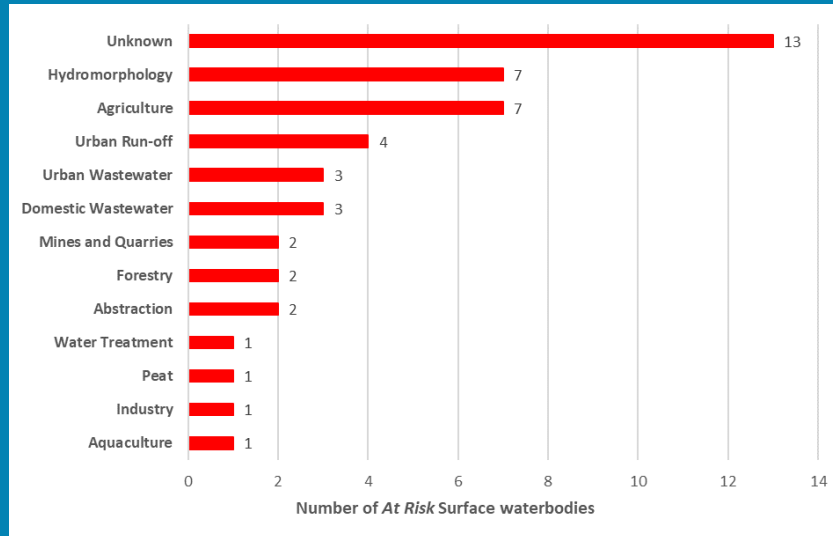
Significant
Pressures

Action

Summary
Information

Significant Pressures driving risk

Significant pressure types impacting the 35 *At Risk* surface waterbodies are broken down in the figures below, including significant pressure information for the nine *At Risk* High Ecological Status Objective waterbodies.



The issues driven by these pressures are mainly nutrient pollution, chemical pollution and organic pollution impacts. For more information, see https://www.catchments.ie/data/#/dashboard/pressure?_k=i351zs.

*Go to the Summary Information section to get significant pressure and issue data for *At Risk* waterbodies within the Gweebarra-Sheephaven Catchment.*

Click [here](#) for more information on significant pressures

Significant Pressures

Introduction

Water Quality Summary

High Status Objectives

Water Quality Changes

WFD Risk

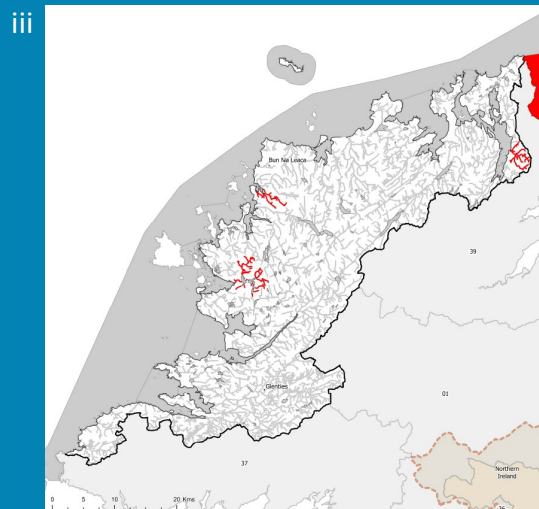
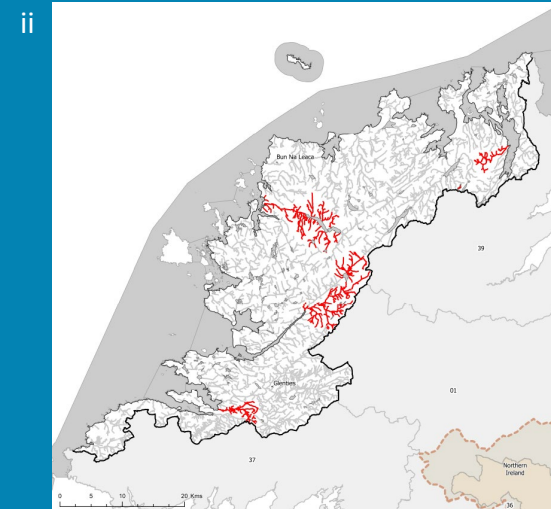
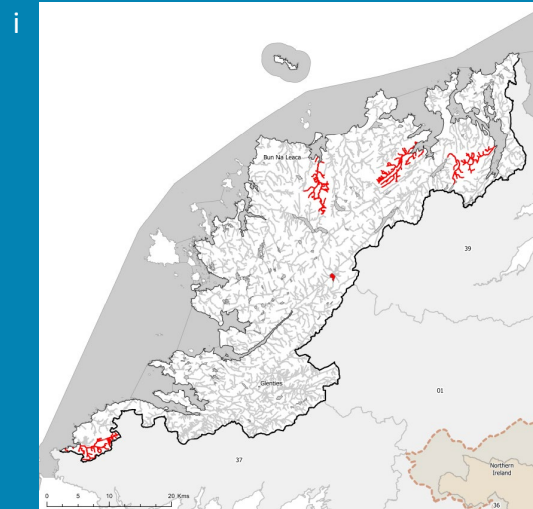
Significant Pressures

Action

Summary Information

Agriculture and hydromorphological pressures are the top significant pressures, both impacting 20% of the 35 *At Risk* waterbodies within the Gweebarra-Sheephaven Catchment, followed by 11% impacted by urban run-off.

River Waterbody
Significant Pressure in Waterbody *At Risk*
Other Waterbodies
Lake, Coastal and Transitional Waterbody
Significant Pressure in Waterbody *At Risk*
Other Waterbodies



The catchments.ie dashboards will show all significant pressures identified for this catchment.

www.catchments.ie/data/#/dashboard/pressure

Go to the [EPA Water Maps](#) for the locations of all significant pressure types identified for this catchment

Locations of At Risk surface waterbodies impacted by i) Agriculture, ii) Hydromorphological Pressures and iii) Urban Run-off.

Introduction

Water Quality
Summary

High Status
Objectives

Water Quality
Changes

WFD Risk

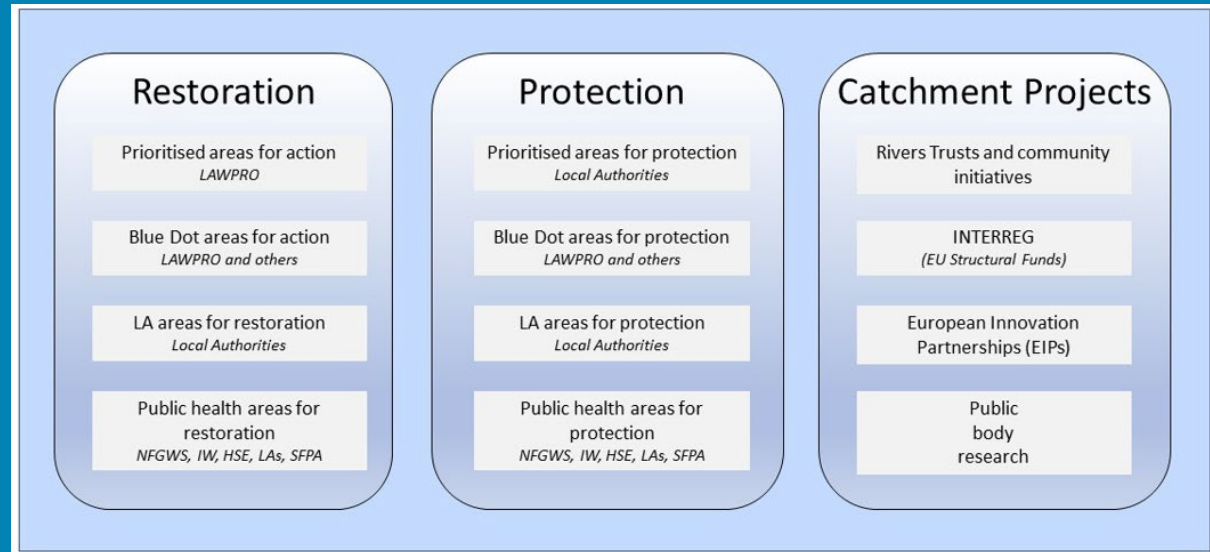
Significant
Pressures

Action

Summary
Information

Priority Areas for Action

A number of waterbodies have been prioritised through the selection of Areas for Action. There were two Priority Areas for Action identified for the second river basin management planning cycle in the Gweebarra-Sheephaven Catchment. This has increased to a total of three Areas for Restoration, five Areas for Protection and two Catchment Projects for the third cycle. ***Go to the summary information section to get Area for Action information for waterbodies within the Gweebarra-Sheephaven Catchment.***



Types of Areas for Action under the third cycle River Basin Management Plan

- View the current progress of Areas for Action and Summary Reports completed by LAWPRO, on [catchments.ie](https://www.catchments.ie) and the EPA Water Map:
 - <https://www.catchments.ie/data/#/areaforaction>
 - https://gis.epa.ie/EPAMaps/default?easting=?&northing=?&lid=EPA:WFD_AreasForAction
- LAWPRO have also published detailed desktop studies on Prioritised Areas for Action (PAAs) which are available their website: <https://lawwaters.ie/desktop-studies/>
- Information on Areas for Action for the second cycle is available in Cycle 2 Catchment Assessments which have been archived on [catchments.ie](https://www.catchments.ie/download/cycle-2-catchment-assessments-published-september-2018/): <https://www.catchments.ie/download/cycle-2-catchment-assessments-published-september-2018/>

Introduction

Water Quality
Summary

High Status
Objectives

Water Quality
Changes

WFD Risk

Significant
Pressures

Action

Summary
Information

Summary information for all waterbodies in the Gweebarra-Sheephaven Catchment

The next page provides a table with a breakdown of key information for all waterbodies in this catchment. The key is provided below. Additional information for each waterbody is available on <https://www.catchments.ie/data>, including a breakdown of status, a monitoring schedule for monitored waterbodies and downloadable chemistry results, where available.

Protected Area categories	BW: Bathing Water DW: Drinking Water Fish: Salmonid Waters NSA: Nutrient Sensitive Areas SAC: Special Area of Conservation, Natura 2000 (water dependent habitats and species) SF: Shellfish Area SPA: Special Area of Protection, Natura 2000 (water dependent habitat and species)
Significant pressure* types categories <i>* For At Risk waterbodies only</i>	Ab: Abstractions Ag: Agriculture Aq: Aquaculture At: Atmospheric DWW: Domestic Wastewater For: Forestry HPS: Historically polluted sites HYMO: Hydromorphology Ind: Industry IS: Invasive Species M+Q: Mines and Quarries Peat: Peat Drainage and Extraction UR: Urban Run-Off UWW: Urban Wastewater Was: Waste WT: Water Treatment

Catchment Code	Waterbody (WB) Code	WB Name	WB Type	Local Authority	Protected Area	Status 10-15	Status 13-18	Status 16-21	Environmental Objective	Environmental Objective Date	WFD Risk 16-21	Significant Issue(s)	Significant Pressure(s)	Area for Action (AFA)	AFA (lead, type)	Link to WB page on catchments.ie	Link to WB on EPA Water Map
37, 38, 39, 40	IE_NW_100_0000	Northwestern Atlantic Seaboard (HAs 37;38)	Coastal	Donegal County Council	BW; SAC; SPA; SF;	High	High	High	High	2021 or earlier	Not at risk					View WB Page	View WB on EPA Water Map
38	IE_NW_110_0000	Loughros Bay	Coastal	Donegal County Council	SAC; SPA; SF;	Unassigned	High	High	Good	2021 or earlier	Review					View WB Page	View WB on EPA Water Map
38	IE_NW_120_0000	Gweebarra Bay	Coastal	Donegal County Council	BW; SAC; SPA; SF;	Good	Good	High	High	2021 or earlier	Not at risk					View WB Page	View WB on EPA Water Map
38	IE_NW_130_0000	Trawena Bay	Coastal	Donegal County Council	SF;	Unassigned	Good	Good	Good	2021 or earlier	Review					View WB Page	View WB on EPA Water Map
38	IE_NW_140_0000	Dungloe Bay	Coastal	Donegal County Council	SAC; SF;	Unassigned	High	High	Good	2021 or earlier	Not at risk					View WB Page	View WB on EPA Water Map
38	IE_NW_150_0000	Rutland Sound	Coastal	Donegal County Council	SAC;	Unassigned	High	High	Good	2021 or earlier	Review					View WB Page	View WB on EPA Water Map
38	IE_NW_150_0100	Sally's Lough	Coastal	Donegal County Council	SAC;	Unassigned	Unassigned	Unassigned	Good	Unknown	Review					View WB Page	View WB on EPA Water Map
38	IE_NW_160_0000	Gweedore Bay	Coastal	Donegal County Council	BW; SAC; SPA; SF;	Unassigned	High	High	Good	2021 or earlier	Review					View WB Page	View WB on EPA Water Map
38	IE_NW_170_0000	Ballyness Bay	Coastal	Donegal County Council	SAC;	Unassigned	High	High	Good	2021 or earlier	Not at risk					View WB Page	View WB on EPA Water Map
38	IE_NW_180_0000	Tory Island Waters	Coastal	Donegal County Council	SAC; SPA;	Unassigned	Unassigned	Unassigned	Good	Unknown	Review					View WB Page	View WB on EPA Water Map
38	IE_NW_190_0000	Sheephaven Bay	Coastal	Donegal County Council	BW; SAC; SPA; SF;	Unassigned	High	High	Good	2021 or earlier	Review					View WB Page	View WB on EPA Water Map
38	IE_NW_200_0000	Mulroy Bay Broadwater	Coastal	Donegal County Council	SAC; SPA; SF;	Moderate	Good	Good	Good	2021 or earlier	Not at risk					View WB Page	View WB on EPA Water Map
38	IE_NW_210_0000	Mulroy Bay Northwater	Coastal	Donegal County Council	SAC; SPA; SF;	Unassigned	Good	Good	Good	2021 or earlier	Review					View WB Page	View WB on EPA Water Map
38, 39	IE_NW_220_0000	Lough Swilly	Coastal	Donegal County Council	BW; SAC; SPA; SF;	High	Good	Good	High	2022-2027	At risk	Nutrients	DWTS, UR, UWW			View WB Page	View WB on EPA Water Map
1, 36, 37, 38	IE_NW_G_047	Donegal South	Groundwater	Donegal County Council	DWPA; SAC	Good	Good	Good	Good	2021 or earlier	Not at risk					View WB Page	View WB on EPA Water Map
1, 37, 38, 39	IE_NW_G_049	Northwest Donegal	Groundwater	Donegal County Council	DWPA; SAC	Good	Good	Good	Good	2021 or earlier	Not at risk					View WB Page	View WB on EPA Water Map
38	IE_NW_G_099	Arainn Mhor (Donegal)	Groundwater	Donegal County Council	DWPA; SAC	Good	Good	Good	Good	2021 or earlier	Not at risk					View WB Page	View WB on EPA Water Map
1, 37, 38, 39	IEGBNI_NW_G_048	Ballybofey	Groundwater	Donegal County Council	DWPA; SAC	Good	Good	Good	Good	2021 or earlier	Not at risk					View WB Page	View WB on EPA Water Map
1, 38, 39, 40	IEGBNI_NW_G_059	Lough Swilly	Groundwater	Donegal County Council	DWPA; SAC	Good	Good	Good	Good	2021 or earlier	Not at risk					View WB Page	View WB on EPA Water Map
38	IE_NW_38_11	Gannevegil	Lake	Donegal County Council	SAC;	Unassigned	Good	Good	Good	2021 or earlier	Not at risk					View WB Page	View WB on EPA Water Map
38	IE_NW_38_18	Atirrive	Lake	Donegal County Council	SAC; SPA;	Unassigned	High	High	Good	2021 or earlier	Not at risk			Clady	LAWPRO, Protection	View WB Page	View WB on EPA Water Map
38	IE_NW_38_19	Altan	Lake	Donegal County Council	SAC; SPA;	Unassigned	High	Good	Good	2021 or earlier	Not at risk			Tullaghobegley	LAWPRO, Restoration	View WB Page	View WB on EPA Water Map
38	IE_NW_38_194	Fallaneas	Lake	Donegal County Council	SAC;	Unassigned	Good	Good	Good	2021 or earlier	Review					View WB Page	View WB on EPA Water Map
38	IE_NW_38_199	Melmore	Lake	Donegal County Council	SAC; SPA;	Unassigned	Good	Good	Good	2021 or earlier	Not at risk					View WB Page	View WB on EPA Water Map
38	IE_NW_38_200	Beg DL	Lake	Donegal County Council	SAC; SPA;	Unassigned	Good	Good	Good	2021 or earlier	Not at risk					View WB Page	View WB on EPA Water Map
38	IE_NW_38_22	Glen DL	Lake	Donegal County Council	SAC; SPA;	Good	Good	Moderate	Good	2022-2027	Review			Owencarrow_Blue Dot	LAWPRO, Protection	View WB Page	View WB on EPA Water Map
38	IE_NW_38_232	Columbcilles	Lake	Donegal County Council	DWPA;	Unassigned	High	Good	Good	2021 or earlier	Not at risk					View WB Page	View WB on EPA Water Map
38	IE_NW_38_24	Nillan	Lake	Donegal County Council	SAC; SPA;	Unassigned	Good	Good	Good	2021 or earlier	Not at risk			Donegal SW and Murlins	LAWPRO, Restoration	View WB Page	View WB on EPA Water Map
38	IE_NW_38_26	Nacung Upper	Lake	Donegal County Council	SAC; SPA;	Unassigned	Good	Good	Good	2021 or earlier	Review			Clady	LAWPRO, Protection	View WB Page	View WB on EPA Water Map
38	IE_NW_38_278	Veigha	Lake	Donegal County Council		Unassigned	Good	Good	Good	2021 or earlier	Review					View WB Page	View WB on EPA Water Map
38	IE_NW_38_29	Nameeltoge	Lake	Donegal County Council	DWPA;	Unassigned	High	Good	Good	2021 or earlier	Not at risk					View WB Page	View WB on EPA Water Map
38	IE_NW_38_31	New	Lake	Donegal County Council	SAC; SPA;	Unassigned	Good	Good	Good	2021 or earlier	Not at risk					View WB Page	View WB on EPA Water Map
38	IE_NW_38_33	Aluirg	Lake	Donegal County Council	SAC; SPA;	Unassigned	High	High	Good	2021 or earlier	Not at risk					View WB Page	View WB on EPA Water Map
38	IE_NW_38_43	Nacuskry	Lake	Donegal County Council	SAC; SPA;	Unassigned	High	Good	Good	2021 or earlier	Not at risk					View WB Page	View WB on EPA Water Map
38	IE_NW_38_47	Kiltooris	Lake	Donegal County Council	SAC;	Good	Good	Good	Good	2021 or earlier	Not at risk					View WB Page	View WB on EPA Water Map
38	IE_NW_38_474	Fadda DL	Lake	Donegal County Council	SAC; SPA;	Unassigned	High	Good	Good	2021 or earlier	Not at risk					View WB Page	View WB on EPA Water Map
38	IE_NW_38_476	Owenea	Lake	Donegal County Council	SAC; SPA;	Unassigned	Good	Good	Good	2021 or earlier	Review			Donegal SW and Murlins	LAWPRO, Restoration	View WB Page	View WB on EPA Water Map
38	IE_NW_38_477	Nagilly	Lake	Donegal County Council	SAC; SPA;	Unassigned	High	Good	Good	2021 or earlier	Not at risk					View WB Page	View WB on EPA Water Map
38	IE_NW_38_493	Nanillan	Lake	Donegal County Council	SAC; SPA;	Unassigned	High	High	Good	2021 or earlier	Not at risk					View WB Page	View WB on EPA Water Map

38	IE_NW_38_498	Melmore Head	Lake	Donegal County Council	SAC; SPA;	Unassigned	Good	Good	Good	2021 or earlier	Not at risk					View WB Page	View WB on EPA Water Map
38	IE_NW_38_5	Namurrag	Lake	Donegal County Council	SAC;	Unassigned	Good	Good	Good	2021 or earlier	Not at risk					View WB Page	View WB on EPA Water Map
38	IE_NW_38_50	Ponud	Lake	Donegal County Council	SAC;	Unassigned	Moderate	Good	Good	2021 or earlier	Not at risk					View WB Page	View WB on EPA Water Map
38	IE_NW_38_514	Reelan	Lake	Donegal County Council		Unassigned	Unassigned	Good	Good	2021 or earlier	Not at risk					View WB Page	View WB on EPA Water Map
38	IE_NW_38_515	Nadeal	Lake	Donegal County Council	SAC; SPA;	Unassigned	Good	Good	Good	2021 or earlier	Not at risk					View WB Page	View WB on EPA Water Map
38	IE_NW_38_517	Summy	Lake	Donegal County Council	SAC;	Unassigned	High	High	Good	2021 or earlier	Not at risk					View WB Page	View WB on EPA Water Map
38	IE_NW_38_52	Anna	Lake	Donegal County Council	DWPA; SAC; SPA;	Unassigned	Good	High	Good	2021 or earlier	Not at risk					View WB Page	View WB on EPA Water Map
38	IE_NW_38_526	Moilt	Lake	Donegal County Council	SAC; SPA;	Unassigned	High	Good	Good	2021 or earlier	Not at risk					View WB Page	View WB on EPA Water Map
38	IE_NW_38_530	Feeane	Lake	Donegal County Council	SAC; SPA;	Unassigned	High	High	Good	2021 or earlier	Not at risk					View WB Page	View WB on EPA Water Map
38	IE_NW_38_539	Warvanneil	Lake	Donegal County Council	SAC;	Unassigned	Good	Good	Good	2021 or earlier	Not at risk					View WB Page	View WB on EPA Water Map
38	IE_NW_38_54	Machugh	Lake	Donegal County Council	SAC;	Unassigned	Good	Good	Good	2021 or earlier	Not at risk					View WB Page	View WB on EPA Water Map
38	IE_NW_38_542	Clooney	Lake	Donegal County Council	SAC;	Unassigned	Unassigned	Good	Good	2021 or earlier	Not at risk					View WB Page	View WB on EPA Water Map
38	IE_NW_38_543	Fad Dunglow	Lake	Donegal County Council	SAC; SPA;	Unassigned	Good	Good	Good	2021 or earlier	Not at risk					View WB Page	View WB on EPA Water Map
38	IE_NW_38_545	Skeskinmore	Lake	Donegal County Council	SAC; SPA;	Unassigned	High	Good	Good	2021 or earlier	Not at risk					View WB Page	View WB on EPA Water Map
38	IE_NW_38_546	Glentornan	Lake	Donegal County Council	SAC; SPA;	Unassigned	High	High	Good	2021 or earlier	Not at risk			Clady	LAWPRO, Protection	View WB Page	View WB on EPA Water Map
38	IE_NW_38_55	Aleck More	Lake	Donegal County Council		Unassigned	Good	Good	Good	2021 or earlier	Not at risk					View WB Page	View WB on EPA Water Map
38	IE_NW_38_56	Magrath More	Lake	Donegal County Council	SAC; SPA;	Unassigned	High	High	Good	2021 or earlier	Not at risk					View WB Page	View WB on EPA Water Map
38	IE_NW_38_561	Anoon	Lake	Donegal County Council	SAC; SPA;	Unassigned	High	Good	Good	2021 or earlier	Not at risk					View WB Page	View WB on EPA Water Map
38	IE_NW_38_563	Nanuroge	Lake	Donegal County Council	SAC; SPA;	Unassigned	High	Good	Good	2021 or earlier	Not at risk					View WB Page	View WB on EPA Water Map
38	IE_NW_38_565	Agannive Slieve Snaght	Lake	Donegal County Council	SAC; SPA;	Unassigned	High	High	Good	2021 or earlier	Not at risk			Clady	LAWPRO, Protection	View WB Page	View WB on EPA Water Map
38	IE_NW_38_566	Lagha	Lake	Donegal County Council	DWPA;	Unassigned	Unassigned	Good	Good	2021 or earlier	Not at risk					View WB Page	View WB on EPA Water Map
38	IE_NW_38_57	Birroge	Lake	Donegal County Council	SAC;	Unassigned	High	High	Good	2021 or earlier	Not at risk					View WB Page	View WB on EPA Water Map
38	IE_NW_38_571	Cushkeeragh	Lake	Donegal County Council	SAC; SPA;	Unassigned	Good	Good	Good	2021 or earlier	Not at risk					View WB Page	View WB on EPA Water Map
38	IE_NW_38_576	Keel Crotty	Lake	Donegal County Council	DWPA; SAC; SPA;	Moderate	Moderate	Moderate	Good	2022-2027	At risk	Hydrological, UnknowImpactType	Ab			View WB Page	View WB on EPA Water Map
38	IE_NW_38_59	Kinny	Lake	Donegal County Council	SAC;	Good	Moderate	Good	Good	2021 or earlier	Not at risk					View WB Page	View WB on EPA Water Map
38	IE_NW_38_594	Anillar	Lake	Donegal County Council	SAC; SPA;	Unassigned	High	High	Good	2021 or earlier	Not at risk					View WB Page	View WB on EPA Water Map
38	IE_NW_38_597	Fad Gubbin Hill	Lake	Donegal County Council	SAC; SPA;	Unassigned	Moderate	Good	Good	2021 or earlier	Not at risk					View WB Page	View WB on EPA Water Map
38	IE_NW_38_60	Aderry	Lake	Donegal County Council	SAC;	Unassigned	Good	Good	Good	2021 or earlier	Not at risk					View WB Page	View WB on EPA Water Map
38	IE_NW_38_603	Nabrackmore	Lake	Donegal County Council	SAC;	Unassigned	Good	Good	Good	2021 or earlier	Not at risk					View WB Page	View WB on EPA Water Map
38	IE_NW_38_604	Namanlagh	Lake	Donegal County Council	SAC;	Unassigned	Good	Good	Good	2021 or earlier	Not at risk					View WB Page	View WB on EPA Water Map
38	IE_NW_38_606	Namuck	Lake	Donegal County Council	SAC; SPA;	Unassigned	Good	Good	Good	2021 or earlier	Not at risk					View WB Page	View WB on EPA Water Map
38	IE_NW_38_61	an tSeisigh	Lake	Donegal County Council	SAC;	Good	Good	Good	Good	2021 or earlier	Not at risk					View WB Page	View WB on EPA Water Map
38	IE_NW_38_612	Lack More	Lake	Donegal County Council	SAC; SPA;	Unassigned	High	High	Good	2021 or earlier	Not at risk					View WB Page	View WB on EPA Water Map
38	IE_NW_38_613	Agher	Lake	Donegal County Council		Unassigned	Good	Good	Good	2021 or earlier	Not at risk					View WB Page	View WB on EPA Water Map
38	IE_NW_38_62	Meenlecknalore	Lake	Donegal County Council	SAC;	Unassigned	Good	Good	Good	2021 or earlier	Not at risk					View WB Page	View WB on EPA Water Map
38	IE_NW_38_621	Fad Portnoo	Lake	Donegal County Council	SAC;	Unassigned	Unassigned	High	Good	2021 or earlier	Not at risk					View WB Page	View WB on EPA Water Map
38	IE_NW_38_63	Acloghbolie	Lake	Donegal County Council	SAC;	Unassigned	High	Good	Good	2021 or earlier	Not at risk					View WB Page	View WB on EPA Water Map
38	IE_NW_38_635	Greenan	Lake	Donegal County Council	DWPA;	High	Good	Good	High	2022-2027	At risk	Hydrological, Morphological	HYMO	Owencarrow_Blue Dot	LAWPRO, Protection	View WB Page	View WB on EPA Water Map
38	IE_NW_38_64	Doon	Lake	Donegal County Council	SAC;	Unassigned	Moderate	Good	Good	2021 or earlier	Not at risk					View WB Page	View WB on EPA Water Map
38	IE_NW_38_649	Salt	Lake	Donegal County Council	DWPA;	Good	Good	Good	Good	2021 or earlier	Not at risk					View WB Page	View WB on EPA Water Map
38	IE_NW_38_651	Magrath Beg	Lake	Donegal County Council	SAC; SPA;	Unassigned	High	High	Good	2021 or earlier	Not at risk					View WB Page	View WB on EPA Water Map
38	IE_NW_38_652	Adreen	Lake	Donegal County Council	SAC; SPA;	Unassigned	Moderate	Good	Good	2021 or earlier	Not at risk					View WB Page	View WB on EPA Water Map

38	IE_NW_38_66	Croangar	Lake	Donegal County Council	SAC; SPA;	Unassigned	High	Good	Good	2021 or earlier	Not at risk					View WB Page	View WB on EPA Water Map
38	IE_NW_38_661	Croan	Lake	Donegal County Council	SAC; SPA;	Unassigned	High	High	Good	2021 or earlier	Not at risk			Clady	LAWPRO, Protection	View WB Page	View WB on EPA Water Map
38	IE_NW_38_665	Agannive Brockagh	Lake	Donegal County Council	SAC;	Unassigned	High	Good	High	2022-2027	Review			Owencarrow_Blue Dot	LAWPRO, Protection	View WB Page	View WB on EPA Water Map
38	IE_NW_38_668	Naglea	Lake	Donegal County Council	DWPA;	Moderate	Good	Good	Good	2021 or earlier	Not at risk					View WB Page	View WB on EPA Water Map
38	IE_NW_38_67	Nasnanida	Lake	Donegal County Council	SAC; SPA;	Good	Good	Moderate	Good	2022-2027	At risk	Nutrients	Unknown			View WB Page	View WB on EPA Water Map
38	IE_NW_38_670	Kindrum	Lake	Donegal County Council	SAC;	Moderate	Moderate	Moderate	Good	2022-2027	At risk	UnknownImpactType	Unknown			View WB Page	View WB on EPA Water Map
38	IE_NW_38_671	Ananima	Lake	Donegal County Council	SAC;	Unassigned	Moderate	Good	Good	2021 or earlier	Not at risk					View WB Page	View WB on EPA Water Map
38	IE_NW_38_678	Shannagh	Lake	Donegal County Council	DWPA; SAC;	Moderate	Good	Good	Good	2021 or earlier	Not at risk					View WB Page	View WB on EPA Water Map
38	IE_NW_38_683	Dunlewy	Lake	Donegal County Council	SAC; SPA;	Unassigned	Good	High	Good	2021 or earlier	Review			Clady	LAWPRO, Protection	View WB Page	View WB on EPA Water Map
38	IE_NW_38_69	Meela	Lake	Donegal County Council		Unassigned	Moderate	Good	Good	2021 or earlier	Not at risk					View WB Page	View WB on EPA Water Map
38	IE_NW_38_692	Dunglow	Lake	Donegal County Council	SAC;	High	Good	Good	High	2022-2027	At risk	Chemical, Nutrients	Unknown	Dungloe	Donegal County Council, Restoration	View WB Page	View WB on EPA Water Map
38	IE_NW_38_693	Veagh	Lake	Donegal County Council	SAC; SPA;	Good	Good	Good	High	2022-2027	At risk	Hydrological	Ab	Owencarrow_Blue Dot	LAWPRO, Protection	View WB Page	View WB on EPA Water Map
38	IE_NW_38_73	Derryduff	Lake	Donegal County Council	SAC;	Unassigned	Good	Good	Good	2021 or earlier	Not at risk					View WB Page	View WB on EPA Water Map
38	IE_NW_38_75	Keel Kilmacrenan	Lake	Donegal County Council		Good	Good	Good	Good	2021 or earlier	Review					View WB Page	View WB on EPA Water Map
38	IE_NW_38_77	Annilanowennamarve	Lake	Donegal County Council	SAC; SPA;	Unassigned	Good	Good	Good	2021 or earlier	Not at risk					View WB Page	View WB on EPA Water Map
38	IE_NW_38_8	Nanuarragh	Lake	Donegal County Council	SAC;	Unassigned	Good	Good	Good	2021 or earlier	Not at risk					View WB Page	View WB on EPA Water Map
38	IE_NW_38_81	Mullaghderg East	Lake	Donegal County Council	SAC;	Unassigned	High	Good	Good	2021 or earlier	Review					View WB Page	View WB on EPA Water Map
38	IE_NW_38_82	Craghy	Lake	Donegal County Council	SAC; SPA;	Unassigned	Good	Good	Good	2021 or earlier	Not at risk					View WB Page	View WB on EPA Water Map
38	IE_NW_38_83	Anure	Lake	Donegal County Council	SPA;	Good	Good	Good	High	2022-2027	At risk	Nutrients, Organic	DWTS			View WB Page	View WB on EPA Water Map
38	IE_NW_38_84	Barra	Lake	Donegal County Council	SAC; SPA;	Good	Good	Good	High	2022-2027	At risk	Chemical	Unknown, Ag			View WB Page	View WB on EPA Water Map
38	IE_NW_38_85	Mullaghderg West	Lake	Donegal County Council	SAC;	Unassigned	Moderate	Good	Good	2021 or earlier	Not at risk					View WB Page	View WB on EPA Water Map
38	IE_NW_38A010200	ABBERACHRIN_010	River	Donegal County Council	SAC;	Good	Good	Good	Good	2021 or earlier	Not at risk					View WB Page	View WB on EPA Water Map
38	IE_NW_38A190390	Adoochro_010	River	Donegal County Council	SAC; SPA;	Unassigned	Good	Good	Good	2021 or earlier	Not at risk					View WB Page	View WB on EPA Water Map
38	IE_NW_38B020100	BRACKY_010	River	Donegal County Council	SAC;	Poor	Poor	Moderate	Good	2022-2027	At risk	Nutrients, Organic	Ind	Donegal SW and Murlins	LAWPRO, Restoration	View WB Page	View WB on EPA Water Map
38	IE_NW_38B030500	BIG BURN_010	River	Donegal County Council	DWPA; SAC;	Moderate	Moderate	Poor	Good	2022-2027	At risk	Morphological, Chemical, Nutrients	For, Ag, HYMO			View WB Page	View WB on EPA Water Map
38	IE_NW_38B040100	BUNLIN_010	River	Donegal County Council		Moderate	Good	Good	Good	2021 or earlier	Not at risk					View WB Page	View WB on EPA Water Map
38	IE_NW_38B050400	BURNSIDE_010	River	Donegal County Council		Poor	Poor	Poor	Good	2022-2027	At risk	Nutrients, Organic	UR, UWW			View WB Page	View WB on EPA Water Map
38	IE_NW_38B070690	Bellanagoal river_010	River	Donegal County Council	SAC; SPA;	Unassigned	Good	Moderate	Good	2022-2027	Review					View WB Page	View WB on EPA Water Map
38	IE_NW_38B170800	BALLINCRICK and BALLYNABROCKY_010	River	Donegal County Council	SAC;	Unassigned	Good	Moderate	Good	2022-2027	Review					View WB Page	View WB on EPA Water Map
38	IE_NW_38B280640	BUN NA LEACA_010	River	Donegal County Council	SAC; SPA;	Unassigned	Moderate	Moderate	Good	2022-2027	Review					View WB Page	View WB on EPA Water Map
38	IE_NW_38B310830	BALLYHOORISKY_010	River	Donegal County Council	SAC; SPA;	Unassigned	High	Good	Good	2021 or earlier	Review					View WB Page	View WB on EPA Water Map
38	IE_NW_38B330970	BARR_COILLEADH_010	River	Donegal County Council	SAC;	Unassigned	Good	Good	Good	2021 or earlier	Not at risk					View WB Page	View WB on EPA Water Map
38	IE_NW_38C010300	CALABBER_010	River	Donegal County Council	SAC; SPA;	Moderate	Good	Good	Good	2021 or earlier	Not at risk			Owencarrow_Blue Dot	LAWPRO, Protection	View WB Page	View WB on EPA Water Map
38	IE_NW_38C020300	CARROWNAMADDY_010	River	Donegal County Council	SAC; SPA;	Moderate	Good	Good	Good	2021 or earlier	Not at risk			Carrownamaddy	Donegal County Council, Protection	View WB Page	View WB on EPA Water Map
38	IE_NW_38C030200	CATHEEN_010	River	Donegal County Council	SAC;	Poor	Poor	Poor	Good	2022-2027	At risk	Hydrological, Morphological, Nutrients, Organic, UnknownImpactType	UR, DWTS, M+Q			View WB Page	View WB on EPA Water Map
38	IE_NW_38C040150	CLADY (DONEGAL)_010	River	Donegal County Council	SAC; SPA;	Moderate	Good	Poor	Good	2022-2027	At risk	Hydrological, UnknownImpactType	HYMO, Unknown	Clady	LAWPRO, Protection	View WB Page	View WB on EPA Water Map
38	IE_NW_38C040300	CLADY (DONEGAL)_020	River	Donegal County Council	SAC;	Good	Good	Moderate	Good	2022-2027	At risk	Hydrological	HYMO	Clady	LAWPRO, Protection	View WB Page	View WB on EPA Water Map
38	IE_NW_38C050200	CORVEEN_010	River	Donegal County Council		Moderate	Moderate	Moderate	Good	2022-2027	At risk	Acidification, Hydrological, Morphological, Nutrients, UnknownImpactType	Peat, M+Q			View WB Page	View WB on EPA Water Map
38	IE_NW_38C060100	CRONANIV BURN_010	River	Donegal County Council	SAC; SPA;	High	High	Good	High	2022-2027	At risk	ElevatedTemperature, UnknownImpactType	Unknown	Clady	LAWPRO, Protection	View WB Page	View WB on EPA Water Map

38	IE_NW_38C130960	CARRICKART_010	River	Donegal County Council	DWPA; SAC;	Unassigned	Unassigned	Moderate	Good	2022-2027	Review					View WB Page	View WB on EPA Water Map
38	IE_NW_38C180660	AN_CHEATHRÁS_CHEANAINN_010	River	Donegal County Council	SAC;	Unassigned	Good	Moderate	Good	2022-2027	Review					View WB Page	View WB on EPA Water Map
38	IE_NW_38C250960	AN_CĂ%IDEADH_010	River	Donegal County Council	SAC;	Unassigned	Good	Moderate	Good	2022-2027	Review					View WB Page	View WB on EPA Water Map
38	IE_NW_38C540200	CNOC_FOLA_010	River	Donegal County Council	SAC;	Unassigned	Good	Good	Good	2021 or earlier	Review					View WB Page	View WB on EPA Water Map
38	IE_NW_38D010080	DEVLIN (DONEGAL)_010	River	Donegal County Council	SAC; SPA;	High	High	High	High	2021 or earlier	Not at risk			Clady	LAWPRO, Protection	View WB Page	View WB on EPA Water Map
38	IE_NW_38D020020	DUNGLOE_010	River	Donegal County Council	SAC; SPA;	High	Good	Good	Good	2021 or earlier	Not at risk			Dungloe	Donegal County Council, Restoration	View WB Page	View WB on EPA Water Map
38	IE_NW_38D020250	DUNGLOE_020	River	Donegal County Council	SAC; SPA;	Moderate	Moderate	Poor	Good	2022-2027	At risk	Nutrients, Organic	UR	Dungloe	Donegal County Council, Restoration	View WB Page	View WB on EPA Water Map
38	IE_NW_38D030500	DUNTALLY_010	River	Donegal County Council	SAC;	Good	Good	Moderate	Good	2022-2027	At risk	Organic	Unknown			View WB Page	View WB on EPA Water Map
38	IE_NW_38D050300	DUVOGE_010	River	Donegal County Council	SAC; SPA;	Good	Good	Good	Good	2021 or earlier	Not at risk					View WB Page	View WB on EPA Water Map
38	IE_NW_38D240730	DOIRE_CHASĂIN_010	River	Donegal County Council	SAC; SPA;	Unassigned	Good	Good	Good	2021 or earlier	Review					View WB Page	View WB on EPA Water Map
38	IE_NW_38D500770	DUNFANAGHY_010	River	Donegal County Council	SAC; SPA;	Unassigned	Moderate	Moderate	Good	2022-2027	Review					View WB Page	View WB on EPA Water Map
38	IE_NW_38D820870	DRUMAGH_010	River	Donegal County Council	SAC;	Unassigned	Good	Good	Good	2021 or earlier	Review			Donegal SW and Murlins	LAWPRO, Restoration	View WB Page	View WB on EPA Water Map
38	IE_NW_38F010200	FAYMORE_010	River	Donegal County Council	SAC;	Poor	Good	Moderate	Good	2022-2027	At risk	Nutrients, Organic	Ag, UWW	Faymore	Donegal County Council, Protection	View WB Page	View WB on EPA Water Map
38	IE_NW_38G010200	GLENNA_010	River	Donegal County Council	SAC; SPA;	Moderate	Good	Poor	Good	2022-2027	At risk	Chemical	Ag	Glenna	Donegal County Council, Protection	View WB Page	View WB on EPA Water Map
38	IE_NW_38G020200	GWEEBARRA_010	River	Donegal County Council	SAC; SPA;	Moderate	Good	Moderate	Good	2022-2027	At risk	Sediment	HYMO			View WB Page	View WB on EPA Water Map
38	IE_NW_38G020300	GWEEBARRA_020	River	Donegal County Council	SAC; SPA;	Good	Good	Moderate	Good	2022-2027	At risk	UnknownImpactType	HYMO			View WB Page	View WB on EPA Water Map
38	IE_NW_38G030100	GWEEDORE_010	River	Donegal County Council	SAC; SPA;	Good	Good	Moderate	Good	2022-2027	At risk	ElevatedTemperature, UnknownImpactType	Unknown			View WB Page	View WB on EPA Water Map
38	IE_NW_38G030300	GWEEDORE_020	River	Donegal County Council	SAC; SPA;	Good	Good	Good	Good	2021 or earlier	Not at risk					View WB Page	View WB on EPA Water Map
38	IE_NW_38G040900	GLEN (LACKAGH)_010	River	Donegal County Council	SAC;	Poor	Good	Moderate	Good	2022-2027	At risk	Chemical	Ag			View WB Page	View WB on EPA Water Map
38	IE_NW_38G050200	GLEN (MEENACLADY)_010	River	Donegal County Council	SAC;	Good	Good	Moderate	Good	2022-2027	At risk	UnknownImpactType	Unknown			View WB Page	View WB on EPA Water Map
38	IE_NW_38G070300	GLENLEHEEN STREAM_010	River	Donegal County Council		Good	Good	Good	Good	2021 or earlier	Not at risk					View WB Page	View WB on EPA Water Map
38	IE_NW_38G150530	GARVEROSS_010	River	Donegal County Council	SAC; SPA;	Unassigned	Good	Moderate	Good	2022-2027	Review					View WB Page	View WB on EPA Water Map
38	IE_NW_38G170990	GARRYMORE (Donegal)_010	River	Donegal County Council	SAC;	Unassigned	Poor	Moderate	Good	2022-2027	Review					View WB Page	View WB on EPA Water Map
38	IE_NW_38G180970	GLAIS BHEAGĂIN_010	River	Donegal County Council	SAC;	Unassigned	Unassigned	Moderate	Good	2022-2027	Review					View WB Page	View WB on EPA Water Map
38	IE_NW_38K010200	KEEL LOUGH STREAM_010	River	Donegal County Council	SAC; SPA;	Poor	Poor	Poor	Good	2022-2027	At risk	Sediment, Morphological, Chemical	WT			View WB Page	View WB on EPA Water Map
38	IE_NW_38K090900	KILTOORIS_010	River	Donegal County Council	SAC; SPA;	Unassigned	Good	Moderate	Good	2022-2027	Review					View WB Page	View WB on EPA Water Map
38	IE_NW_38L020200	LOUGH AGHER STREAM_010	River	Donegal County Council	DWPA; SAC; SPA;	Good	Good	Good	High	2022-2027	At risk	UnknownImpactType	Unknown			View WB Page	View WB on EPA Water Map
38	IE_NW_38L030400	LOUGHKEEL BURN_010	River	Donegal County Council		Good	Moderate	Good	Good	2021 or earlier	Not at risk					View WB Page	View WB on EPA Water Map
38	IE_NW_38L130480	LARGATREANY_010	River	Donegal County Council	SAC; SPA;	Unassigned	Good	Good	Good	2021 or earlier	Not at risk					View WB Page	View WB on EPA Water Map
38	IE_NW_38L150630	LOUGHANURE_010	River	Donegal County Council	SAC;	Unassigned	Unassigned	Moderate	Good	2022-2027	Review					View WB Page	View WB on EPA Water Map
38	IE_NW_38L160510	LADDAN_010	River	Donegal County Council	SAC;	Unassigned	Good	Good	Good	2021 or earlier	Review					View WB Page	View WB on EPA Water Map
38	IE_NW_38M030250	MURLIN_010	River	Donegal County Council	SAC;	Poor	Poor	Poor	Good	2022-2027	At risk	Chemical, Nutrients	Ag	Donegal SW and Murlins	LAWPRO, Restoration	View WB Page	View WB on EPA Water Map
38	IE_NW_38M030400	MURLIN_020	River	Donegal County Council	SAC; SPA;	Poor	Poor	Poor	Good	2022-2027	At risk	Chemical, Nutrients	Ag	Donegal SW and Murlins	LAWPRO, Restoration	View WB Page	View WB on EPA Water Map
38	IE_NW_38M100990	MĂN DOIRE EIDHINN_010	River	Donegal County Council		Unassigned	Unassigned	Good	Good	2021 or earlier	Review					View WB Page	View WB on EPA Water Map
38	IE_NW_38M180780	MĂN AN CHAIRN_010	River	Donegal County Council	SAC;	Unassigned	High	Good	Good	2021 or earlier	Review					View WB Page	View WB on EPA Water Map
38	IE_NW_38M190990	MULLAGHERD_010	River	Donegal County Council	SAC; SPA;	Unassigned	Moderate	Moderate	Good	2022-2027	Review					View WB Page	View WB on EPA Water Map
38	IE_NW_38M290990	MULNAMIN_BEG_010	River	Donegal County Council	DWPA; SAC;	Unassigned	Good	Good	Good	2021 or earlier	Review					View WB Page	View WB on EPA Water Map
38	IE_NW_38M420690	MĂDBHAIGH_010	River	Donegal County Council	SAC; SPA;	Unassigned	Moderate	Moderate	Good	2022-2027	Review					View WB Page	View WB on EPA Water Map
38	IE_NW_38M430800	MEENAGOWAN_010	River	Donegal County Council	SAC;	Unassigned	Good	Good	Good	2021 or earlier	Review					View WB Page	View WB on EPA Water Map
38	IE_NW_38M880970	MAAS_010	River	Donegal County Council	SAC;	Unassigned	Unassigned	Moderate	Good	2022-2027	Review					View WB Page	View WB on EPA Water Map
38	IE_NW_38N040540	NEWTOWNBURKE_010	River	Donegal County Council	SAC; SPA;	Unassigned	Good	Good	Good	2021 or earlier	Review			Donegal SW and Murlins	LAWPRO, Restoration	View WB Page	View WB on EPA Water Map

38	IE_NW_38O010100	OWENATOR_010	River	Donegal County Council	SAC; SPA;	Good	High	Good	Good	2021 or earlier	Not at risk					View WB Page	View WB on EPA Water Map
38	IE_NW_38O030150	OWENCARROW_010	River	Donegal County Council	SAC; SPA;	Good	Good	Good	Good	2021 or earlier	Not at risk			Owencarrow_Blue Dot	LAWPRO, Protection	View WB Page	View WB on EPA Water Map
38	IE_NW_38O030300	OWENCARROW_020	River	Donegal County Council	SAC; SPA;	High	High	High	High	2021 or earlier	Not at risk			Owencarrow_Blue Dot	LAWPRO, Protection	View WB Page	View WB on EPA Water Map
38	IE_NW_38O040040	OWENEA_010	River	Donegal County Council		Good	Good	High	Good	2021 or earlier	Not at risk					View WB Page	View WB on EPA Water Map
38	IE_NW_38O040100	OWENEA_020	River	Donegal County Council	SAC; SPA;	Good	High	High	Good	2021 or earlier	Not at risk					View WB Page	View WB on EPA Water Map
38	IE_NW_38O040450	OWENEA_030	River	Donegal County Council	SAC; SPA;	Good	Good	Good	Good	2021 or earlier	Not at risk					View WB Page	View WB on EPA Water Map
38	IE_NW_38O040500	OWENEA_040	River	Donegal County Council	SAC;	Unassigned	Good	Moderate	Good	2022-2027	Review					View WB Page	View WB on EPA Water Map
38	IE_NW_38O050300	OWENNAMARVE_010	River	Donegal County Council	SAC; SPA;	High	Good	Good	Good	2021 or earlier	Not at risk					View WB Page	View WB on EPA Water Map
38	IE_NW_38O060050	OWENTOCKER_010	River	Donegal County Council	SAC; SPA;	Poor	Good	High	Good	2021 or earlier	Not at risk			Donegal SW and Murlins	LAWPRO, Restoration	View WB Page	View WB on EPA Water Map
38	IE_NW_38O060300	OWENTOCKER_020	River	Donegal County Council	SAC; SPA;	Good	Moderate	Moderate	Good	2022-2027	At risk	Morphological, UnknownImpactType	Unknown, HYMO	Donegal SW and Murlins	LAWPRO, Restoration	View WB Page	View WB on EPA Water Map
38	IE_NW_38O070250	OWENWEE (DOOCHARRY)_010	River	Donegal County Council	SAC; SPA;	High	High	Good	High	2022-2027	At risk	ElevatedTemperature, UnknownImpactType	Unknown			View WB Page	View WB on EPA Water Map
38	IE_NW_38O080050	OWENWEE (LOUGHROS)_010	River	Donegal County Council	SAC; SPA;	Moderate	Good	High	Good	2021 or earlier	Not at risk					View WB Page	View WB on EPA Water Map
38	IE_NW_38O090300	OWENCRONAHULLA_010	River	Donegal County Council	SAC; SPA;	Good	Good	Good	Good	2021 or earlier	Not at risk					View WB Page	View WB on EPA Water Map
38	IE_NW_38O100200	OWENAWILLIN_010	River	Donegal County Council	SAC;	Good	Moderate	Good	Good	2021 or earlier	Not at risk					View WB Page	View WB on EPA Water Map
38	IE_NW_38O130100	OWENWEE (GLEN LOUGH)_010	River	Donegal County Council	SAC; SPA;	High	High	High	High	2021 or earlier	Not at risk			Owencarrow_Blue Dot	LAWPRO, Protection	View WB Page	View WB on EPA Water Map
38	IE_NW_38O140080	OWENVEAGH_010	River	Donegal County Council	SAC; SPA;	High	High	High	High	2021 or earlier	Not at risk			Owencarrow_Blue Dot	LAWPRO, Protection	View WB Page	View WB on EPA Water Map
38	IE_NW_38P010100	PORT STREAM_010	River	Donegal County Council	SAC; SPA;	Poor	High	Good	Good	2021 or earlier	Not at risk			Donegal SW and Murlins	LAWPRO, Restoration	View WB Page	View WB on EPA Water Map
38	IE_NW_38R010200	RAY_010	River	Donegal County Council	SAC; SPA;	Good	Good	Moderate	Good	2022-2027	At risk	Sediment, Nutrients	Unknown			View WB Page	View WB on EPA Water Map
38	IE_NW_38R020990	RATHGORY_010	River	Donegal County Council	SAC;	Unassigned	Good	Moderate	Good	2022-2027	Review					View WB Page	View WB on EPA Water Map
38	IE_NW_38R050930	ROCKHILL (Donegal)_010	River	Donegal County Council	SAC;	Unassigned	Good	Good	Good	2021 or earlier	Review					View WB Page	View WB on EPA Water Map
38	IE_NW_38R090870	ROSEPENNA_010	River	Donegal County Council	SAC;	Unassigned	Moderate	Poor	Good	2022-2027	Review					View WB Page	View WB on EPA Water Map
38	IE_NW_38S010045	STRACASHEL_010	River	Donegal County Council	SAC;	Good	Good	High	Good	2021 or earlier	Not at risk					View WB Page	View WB on EPA Water Map
38	IE_NW_38S010200	STRACASHEL_020	River	Donegal County Council	SAC;	Good	Good	Moderate	Good	2022-2027	At risk	Sediment	For			View WB Page	View WB on EPA Water Map
38	IE_NW_38S030300	SHALLOGAN_010	River	Donegal County Council	SAC;	Good	Good	High	Good	2021 or earlier	Not at risk					View WB Page	View WB on EPA Water Map
38	IE_NW_38S230860	SALTPANS_010	River	Donegal County Council	SAC;	Unassigned	Unassigned	Good	Good	2021 or earlier	Review					View WB Page	View WB on EPA Water Map
38	IE_NW_38T010100	TULLAGHOBEGLY_010	River	Donegal County Council	SAC; SPA;	Poor	Moderate	Good	Good	2021 or earlier	Review			Tullaghobegly	LAWPRO, Restoration	View WB Page	View WB on EPA Water Map
38	IE_NW_38T010400	TULLAGHOBEGLY_020	River	Donegal County Council	SAC; SPA;	Good	Good	Poor	Good	2022-2027	At risk	Sediment, Nutrients, Organic	Aq	Tullaghobegly	LAWPRO, Restoration	View WB Page	View WB on EPA Water Map
38	IE_NW_38T050840	TULACH_010	River	Donegal County Council	SAC;	Unassigned	Good	Moderate	Good	2022-2027	Review					View WB Page	View WB on EPA Water Map
38	IE_NW_38W020970	WOODQUARTER_010	River	Donegal County Council	SAC;	Unassigned	Good	Good	Good	2021 or earlier	Review					View WB Page	View WB on EPA Water Map
38	IE_NW_110_0100	Owenea Estuary	Transitional	Donegal County Council	SAC; SPA;	Unassigned	High	High	Good	2021 or earlier	Not at risk					View WB Page	View WB on EPA Water Map
38	IE_NW_120_0100	Gweebarra Estuary	Transitional	Donegal County Council	SAC; SF;	Good	Good	High	High	2021 or earlier	Not at risk					View WB Page	View WB on EPA Water Map
38	IE_NW_140_0100	Maghery Lough	Transitional	Donegal County Council	SAC;	Unassigned	Moderate	Unassigned	Good	Unknown	Review					View WB Page	View WB on EPA Water Map
38	IE_NW_160_0100	Loch Chionn Caslach (Kincas Lough)	Transitional	Donegal County Council	SAC;	Unassigned	Poor	Moderate	Good	2022-2027	Review					View WB Page	View WB on EPA Water Map
38	IE_NW_160_0200	Gweedore Estuary	Transitional	Donegal County Council	SAC; SPA; SF;	Unassigned	High	High	Good	2021 or earlier	Not at risk					View WB Page	View WB on EPA Water Map
38	IE_NW_160_0300	Moorlagh	Transitional	Donegal County Council	SAC;	Unassigned	Moderate	Unassigned	Good	Unknown	Review					View WB Page	View WB on EPA Water Map
38	IE_NW_160_0500	Meenaclady	Transitional	Donegal County Council	SAC; SPA; SF;	Unassigned	High	High	Good	2021 or earlier	Not at risk					View WB Page	View WB on EPA Water Map
38	IE_NW_180_0100	Loch O Dheas, Tory Island	Transitional	Donegal County Council	SAC; SPA;	Unassigned	Poor	Moderate	Good	2022-2027	Review					View WB Page	View WB on EPA Water Map
38	IE_NW_190_0100	Lackagh Estuary	Transitional	Donegal County Council	SAC; SF;	Unassigned	High	High	Good	2021 or earlier	Not at risk					View WB Page	View WB on EPA Water Map
38	IE_NW_200_0200	Carrick Beg Lough (South)	Transitional	Donegal County Council		Unassigned	Moderate	Unassigned	Good	Unknown	Review					View WB Page	View WB on EPA Water Map