



Cycle 3

**HA 37 Donegal Bay North Catchment Report,
May 2024**



Water Quality Summary

Introduction

Water Quality Summary

High Status Objectives

Water Quality Changes

WFD Risk

Significant Pressures

Action

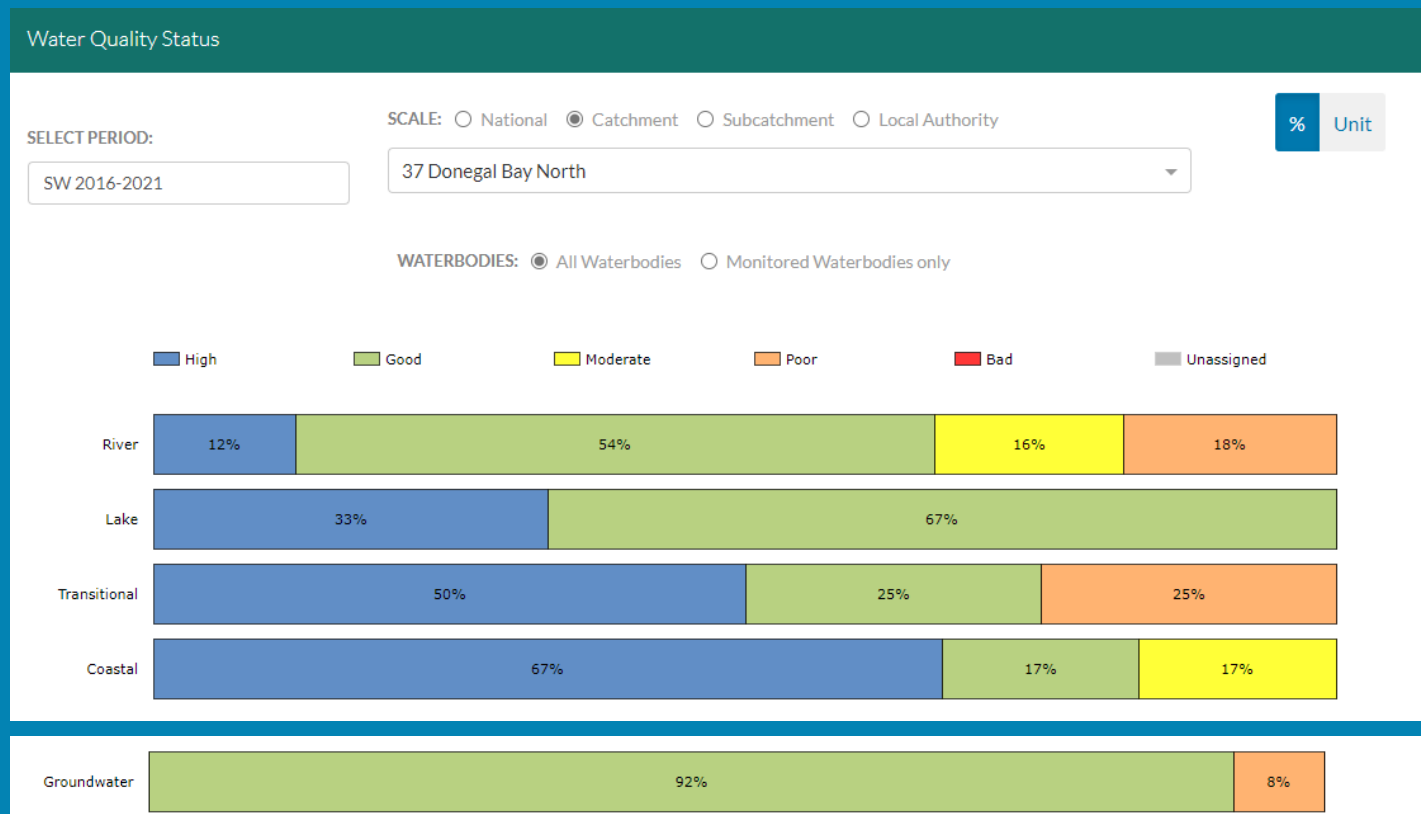
Summary Information

The dashboard below provides a breakdown of water quality status for surface and groundwater bodies in the Donegal Bay North Catchment.

A total of 74% of surface waterbodies were at Good or High Ecological Status in the 2016-2021 monitoring period. Ninety-two percent of groundwater bodies were at Good status.

Go to EPA Water Maps for WFD Status

[EPA Water Map](#)



Water quality status 2016-2021 for the Donegal Bay North Catchment.
View Online Dashboard: <https://www.catchments.ie/data/#/dashboard/waterquality>

High Status Objective Waterbodies

Introduction

High status waters are prioritised for protection and action.

There are 11 waterbodies with a **High Ecological Status Objective (HSO)** in the Donegal Bay North Catchment, with six currently not meeting their environmental objective of High.

Water Quality Summary

Grants for septic tank upgrades may be available in high status objective catchment areas - you can learn more and check your Eircode for eligibility here: <https://www.gov.ie/en/publication/6cc1e-domestic-waste-water-treatment-systems-septic-tanks>

The [EPA Water Map](#) shows the locations of HSO waterbodies. See *Status and Risk / High Status Objectives*.

High Status Objectives

Water Quality Changes

WFD Risk

Significant Pressures

Action

Summary Information

Water Quality Status - High Status Objective Waterbodies

SELECT TYPE:

All Surface Waters

SCALE: Catchment Local Authority

37 Donegal Bay North

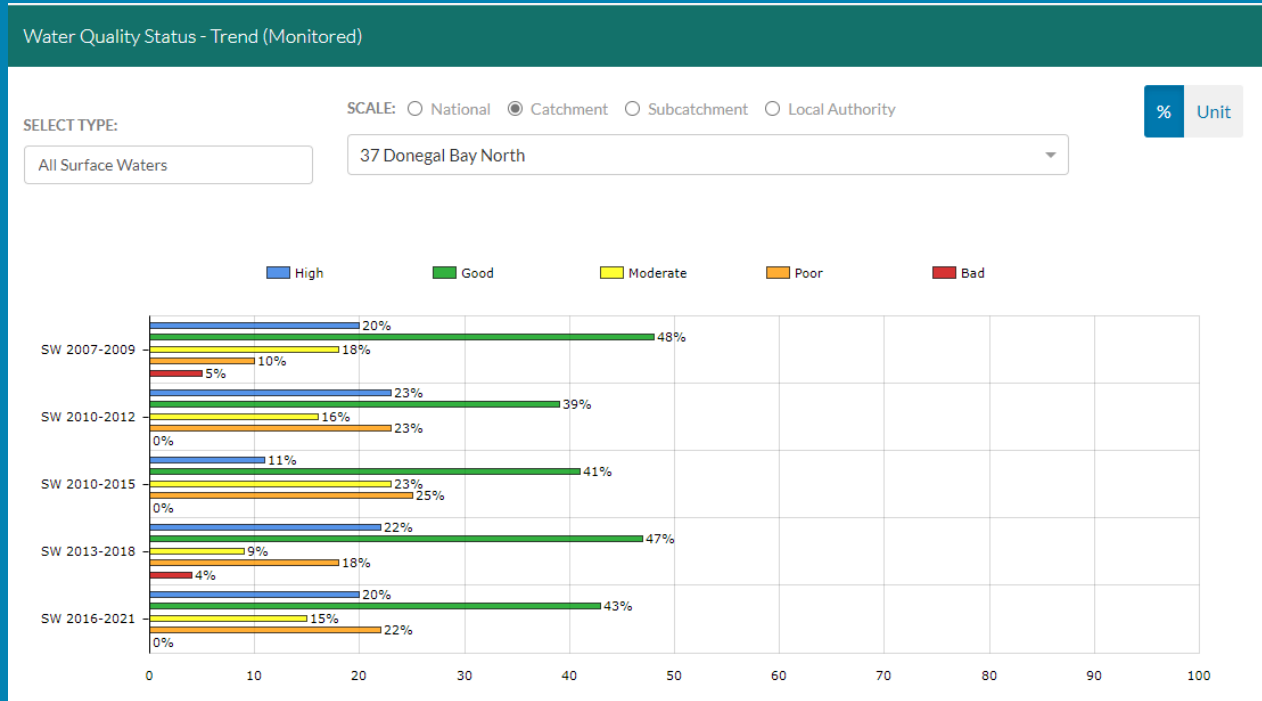
	SW 2007-2009	SW 2010-2012	SW 2010-2015	SW 2013-2018	SW 2016-2021
BRIDGETOWN (DONEGAL)_010 (River)	High	High	Good	High	Good
BUNLACKY_010 (River)	Unassigned	High	Good	Good	High
CORABBER_010 (River)	High	High	Good	Good	Good
EANYBEG WATER_010 (River)	Unassigned	High	High	High	High
EANYBEG WATER_020 (River)	Moderate	Good	High	High	High
FINTRAGH_010 (River)	High	High	Good	Good	Moderate
LOWERYMORE_020 (River)	Unassigned	High	High	High	High
Northwestern Atlantic Seaboard (HAs 37;38) (Coastal)	High	Good	High	High	High
OILY_010 (River)	High	High	High	High	Moderate
OWENTESKINY_010 (River)	High	Good	Good	Good	Poor
TULLINTEANE_010 (River)	High	High	Good	High	Moderate

Water quality status for High Ecological Status Objective waterbodies.

View Online Dashboard: <https://www.catchments.ie/data/#/dashboard/waterquality>

Water Quality Changes

Below illustrates the changes in ecological status in monitored surface waterbodies over the last five monitoring cycles in the Donegal Bay North Catchment. Nationally while there have been improvements in some waterbodies, these have been offset by declines elsewhere.



Ecological status trends for monitored surface waterbodies over the last five monitoring cycles in the Donegal Bay North Catchment. **View online dashboard:** <https://www.catchments.ie/data/#/dashboard/waterquality>

A total of 63 (74%) waterbodies are currently meeting their environmental objective of Good or High Ecological Status.

	Total	Achieving Environmental Objectives (2016-2021)	High Status Environmental Objectives Waterbodies	Achieving High Status Environmental Objectives (2016-2021)
Rivers	50	31 (62%)	10	4 (40%)
Canals	-	-	-	-
Lakes	12	12 (100%)	-	-
Transitional	4	3 (75%)	-	-
Coastal	6	5 (83%)	1	1 (100%)
Groundwater	13	12 (92%)	-	-

Introduction

Water Quality Summary

High Status Objectives

Water Quality Changes

WFD Risk

Significant Pressures

Action

Summary Information

WFD Risk

Introduction

Water Quality Summary

High Status Objectives

Water Quality Changes

WFD Risk

Significant Pressures

Action

Summary Information

A total of 17 (20%) waterbodies are *At Risk* of not meeting their environmental objective in the Donegal Bay North Catchment, while 15 (18%) are under *Review* and 53 (62%) are *Not At Risk*.

Go to [EPA Water Map](#) to see *WFD Risk for this catchment*



WFD Risk for the Donegal Bay North Catchment based on 2016-2021 data.

View Online Dashboard: <https://www.catchments.ie/data/#/dashboard/waterquality>

There is currently one heavily modified water body (HMWB) in the Donegal Bay North Catchment, Killybegs Harbour. It is currently under *Review*.

There are no artificial waterbodies in the Donegal Bay North Catchment.

The [EPA's characterisation outcome report](#) has more information on WFD Risk

Introduction

Water Quality
Summary

High Status
Objectives

Water Quality
Changes

WFD Risk

Significant
Pressures

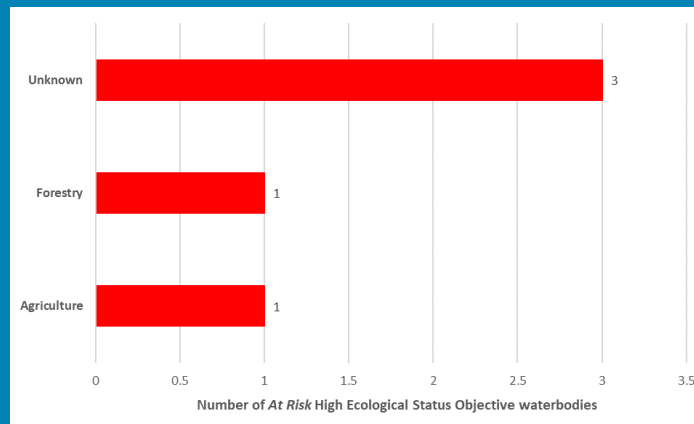
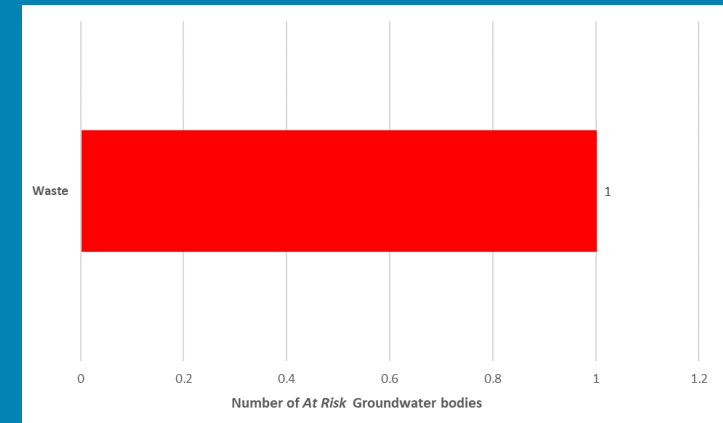
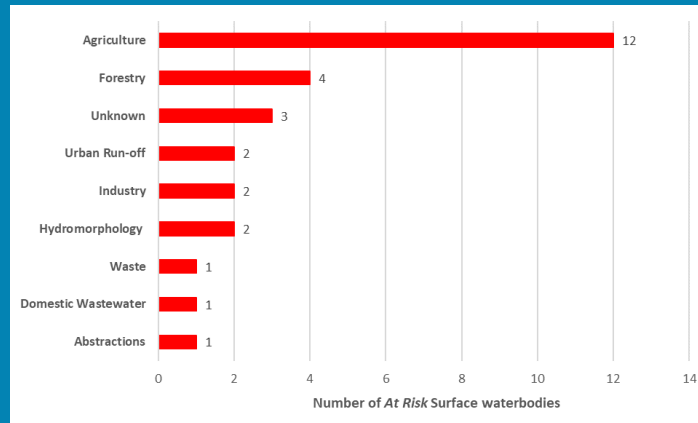
Action

Summary
Information

Significant Pressures driving risk

Click [here](#) for more information on significant pressures

Significant pressure types impacting the 16 *At Risk* surface waterbodies and one groundwater bodies are broken down in the figures below, including significant pressure information for the four *At Risk* High Ecological Status Objective waterbodies.



The issues driven by these pressures are mainly chemical pollution, nutrient pollution and organic pollution impacts for surface water and chemical quality diminution for surface water and nutrient pollution for groundwaters. For more information, see <https://www.catchments.ie/data/#/dashboard/pressure?k=i351zs>.

Go to the Summary Information section to get significant pressure and issue data for At Risk waterbodies within the Donegal Bay North Catchment.

Significant Pressures

Introduction

Water Quality Summary

High Status Objectives

Water Quality Changes

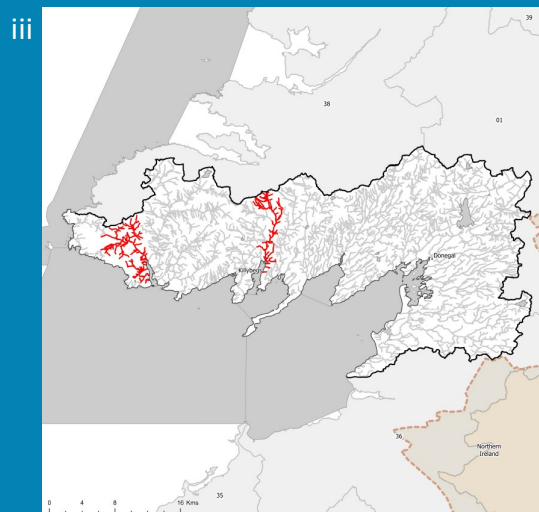
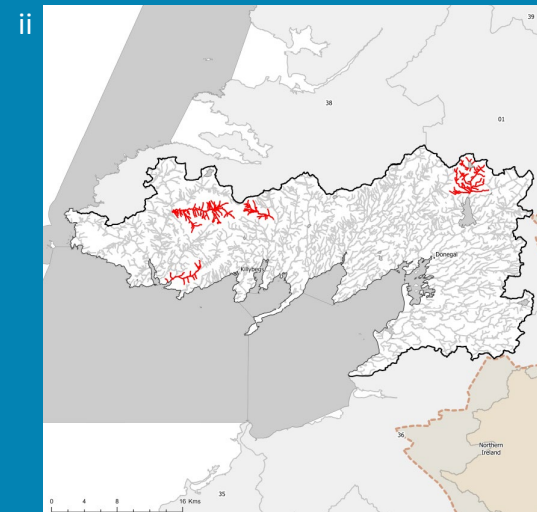
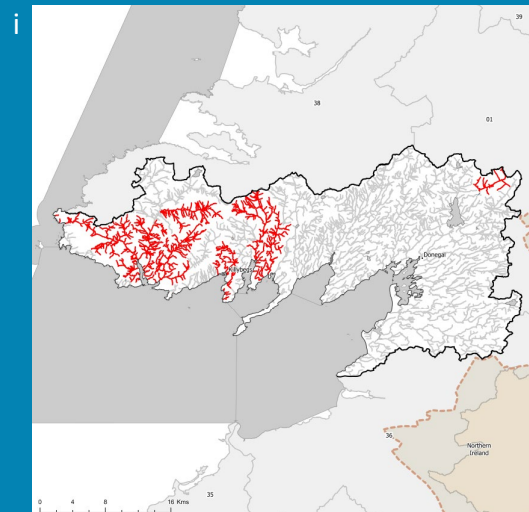
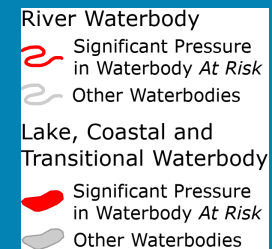
WFD Risk

Significant Pressures

Action

Summary Information

Agriculture is the top significant pressure impacting 71% of the 17 *At Risk* waterbodies within the Donegal Bay North Catchment, followed by 24% impacted by Forestry and 12% by Hydromorphological Pressures.



The catchments.ie dashboards will show all significant pressures identified for this catchment.

www.catchments.ie/data/#/dashboard/pressure

Go to the [EPA Water Maps](#) for the locations of all significant pressure types identified for this catchment

Locations of At Risk surface waterbodies impacted by i) Agriculture, ii) Forestry and iii) Hydromorphological Pressures.

Introduction

Water Quality
Summary

High Status
Objectives

Water Quality
Changes

WFD Risk

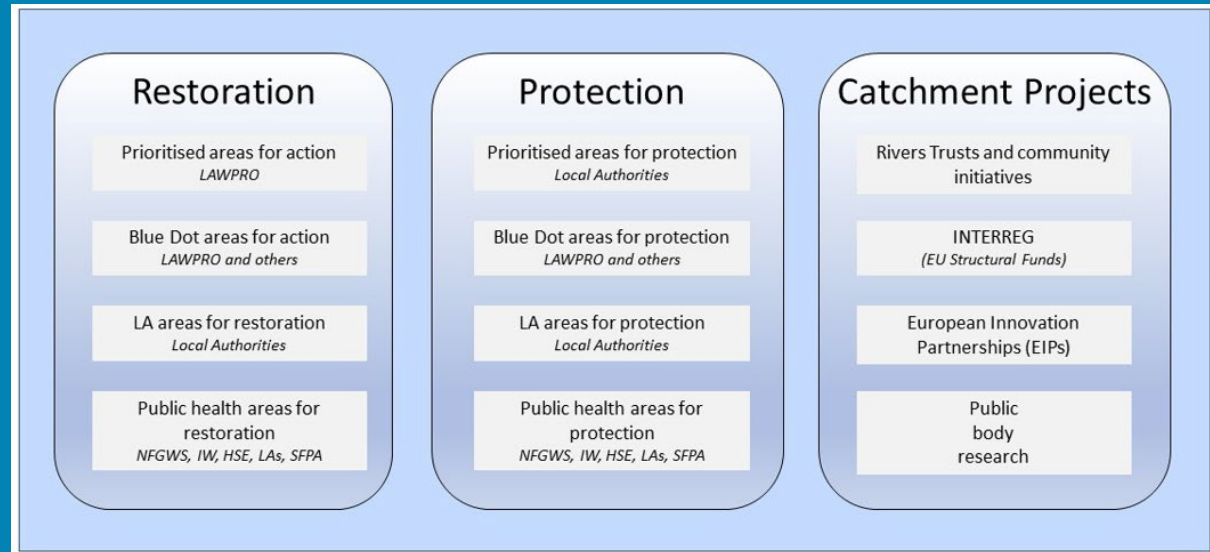
Significant
Pressures

Action

Summary
Information

Priority Areas for Action

A number of waterbodies have been prioritised through the selection of Areas for Action. There were three Priority Areas for Action identified for the second river basin management planning cycle in the Donegal Bay North Catchment. This has increased to a total of five Areas for Restoration and one Catchment Project for the third cycle. ***Go to the summary information section to get Area for Action information for waterbodies within the Donegal Bay North Catchment.***



Types of Areas for Action under the third cycle River Basin Management Plan

- View the current progress of Areas for Action and Summary Reports completed by LAWPRO, on catchments.ie and the EPA Water Map:
 - <https://www.catchments.ie/data/#/areaforaction>
 - https://gis.epa.ie/EPAMaps/default?easting=?&northing=?&lid=EPA:WFD_AreasForAction
- LAWPRO have also published detailed desktop studies on Prioritised Areas for Action (PAAs) which are available their website: <https://lawwaters.ie/desktop-studies/>
- Information on Areas for Action for the second cycle is available in Cycle 2 Catchment Assessments which have been archived on catchments.ie: <https://www.catchments.ie/download/cycle-2-catchment-assessments-published-september-2018/>

Introduction

Water Quality
Summary

High Status
Objectives

Water Quality
Changes

WFD Risk

Significant
Pressures

Action

Summary
Information

Summary information for all waterbodies in the Donegal Bay North Catchment

The next page provides a table with a breakdown of key information for all waterbodies in this catchment. The key is provided below. Additional information for each waterbody is available on <https://www.catchments.ie/data>, including a breakdown of status, a monitoring schedule for monitored waterbodies and downloadable chemistry results, where available.

Protected Area categories	BW: Bathing Water DW: Drinking Water Fish: Salmonid Waters NSA: Nutrient Sensitive Areas SAC: Special Area of Conservation, Natura 2000 (water dependent habitats and species) SF: Shellfish Area SPA: Special Area of Protection, Natura 2000 (water dependent habitat and species)
Significant pressure* types categories <i>* For At Risk waterbodies only</i>	Ab: Abstractions Ag: Agriculture Aq: Aquaculture At: Atmospheric DWW: Domestic Wastewater For: Forestry HPS: Historically polluted sites HYMO: Hydromorphology Ind: Industry IS: Invasive Species M+Q: Mines and Quarries Peat: Peat Drainage and Extraction UR: Urban Run-Off UWW: Urban Wastewater Was: Waste WT: Water Treatment

Catchment Code	Waterbody (WB) Code	WB Name	WB Type	Local Authority	Protected Area	Status 10-15	Status 13-18	Status 16-21	Environmental Objective	Environmental Objective Date	WFD Risk 16-21	Significant Issue(s)	Significant Pressure(s)	Area for Action (AFA)	AFA (lead, type)	Link to WB page on catchments.ie	Link to WB on EPA Water Map
35, 36, 37	IE_NW_010_0000	Donegal Bay (Erne)	Coastal	Donegal County Council	BW; SAC; SPA; SF;	Unassigned	High	High	Good	2021 or earlier	Not at risk					View WB Page	View WB on EPA Water Map
37	IE_NW_060_0000	Inver Bay	Coastal	Donegal County Council	SF;	Unassigned	High	High	Good	2021 or earlier	Not at risk					View WB Page	View WB on EPA Water Map
35, 37	IE_NW_070_0000	Donegal Bay Northern	Coastal	Donegal County Council	BW; SAC; SPA;	Unassigned	High	High	Good	2021 or earlier	Not at risk					View WB Page	View WB on EPA Water Map
37	IE_NW_080_0000	McSwines Bay	Coastal	Donegal County Council	SAC; SF; NSA;	Good	High	Good	Good	2021 or earlier	Not at risk					View WB Page	View WB on EPA Water Map
37	IE_NW_085_0000	Killybegs Harbour	Coastal	Donegal County Council	NSA;	Moderate	Good	Moderate	Good	2022-2027	Review					View WB Page	View WB on EPA Water Map
37, 38, 39, 40	IE_NW_100_0000	Northwestern Atlantic Seaboard (HAs 37;38)	Coastal	Donegal County Council	BW; SAC; SPA; SF;	High	High	High	High	2021 or earlier	Not at risk					View WB Page	View WB on EPA Water Map
36, 37	IE_NW_G_018	Kildoney North	Groundwater	Donegal County Council	DWPA; SAC	Good	Good	Good	Good	2021 or earlier	Not at risk					View WB Page	View WB on EPA Water Map
1, 36, 37, 38	IE_NW_G_047	Donegal South	Groundwater	Donegal County Council	DWPA; SAC	Good	Good	Good	Good	2021 or earlier	Not at risk					View WB Page	View WB on EPA Water Map
1, 37, 38, 39	IE_NW_G_049	Northwest Donegal	Groundwater	Donegal County Council	DWPA; SAC	Good	Good	Good	Good	2021 or earlier	Not at risk					View WB Page	View WB on EPA Water Map
37	IE_NW_G_067	Frosses	Groundwater	Donegal County Council	DWPA	Good	Good	Good	Good	2021 or earlier	Not at risk					View WB Page	View WB on EPA Water Map
37	IE_NW_G_068	St. Johns Point	Groundwater	Donegal County Council	DWPA; SAC	Good	Good	Good	Good	2021 or earlier	Not at risk					View WB Page	View WB on EPA Water Map
37	IE_NW_G_069	Doorin Point	Groundwater	Donegal County Council	DWPA; SAC	Good	Good	Good	Good	2021 or earlier	Not at risk					View WB Page	View WB on EPA Water Map
37	IE_NW_G_070	Inver-Banagher Hill	Groundwater	Donegal County Council	DWPA; SAC	Good	Good	Good	Good	2021 or earlier	Not at risk					View WB Page	View WB on EPA Water Map
36, 37	IE_NW_G_071	Donegal-Ballintra	Groundwater	Donegal County Council	DWPA; SAC	Good	Good	Good	Good	2021 or earlier	Not at risk					View WB Page	View WB on EPA Water Map
36, 37	IE_NW_G_072	Ballyshannon	Groundwater	Donegal County Council	DWPA; SAC	Good	Good	Good	Good	2021 or earlier	Not at risk					View WB Page	View WB on EPA Water Map
36, 37	IE_NW_G_100	Waste Facility (W0024-03)	Groundwater	Donegal County Council	DWPA; SAC	Poor	Poor	Poor	Good	2022-2027	At risk	ChemicalQualityDiminution ForSW, Nutrients	Was			View WB Page	View WB on EPA Water Map
1, 36, 37	IEGBNI_NW_G_005	Castleberg	Groundwater	Donegal County Council	DWPA; SAC	Good	Good	Good	Good	2021 or earlier	Not at risk					View WB Page	View WB on EPA Water Map
1, 36, 37	IEGBNI_NW_G_011	Ballyshannon East	Groundwater	Donegal County Council	DWPA; SAC	Good	Good	Good	Good	2021 or earlier	Not at risk					View WB Page	View WB on EPA Water Map
1, 37, 38, 39	IEGBNI_NW_G_048	Ballybofey	Groundwater	Donegal County Council	DWPA; SAC	Good	Good	Good	Good	2021 or earlier	Not at risk					View WB Page	View WB on EPA Water Map
37	IE_NW_37_140	Meenaviller	Lake	Donegal County Council	SAC; SPA;	Unassigned	High	Good	Good	2021 or earlier	Not at risk					View WB Page	View WB on EPA Water Map
37	IE_NW_37_147	Aroshin	Lake	Donegal County Council	DWPA;	Unassigned	Good	Good	Good	2021 or earlier	Not at risk					View WB Page	View WB on EPA Water Map
37	IE_NW_37_149	Tamur	Lake	Donegal County Council	SAC; SPA;	Unassigned	Moderate	Good	Good	2021 or earlier	Not at risk					View WB Page	View WB on EPA Water Map
37	IE_NW_37_180	Belshade	Lake	Donegal County Council	SAC;	Unassigned	High	High	Good	2021 or earlier	Not at risk					View WB Page	View WB on EPA Water Map
37	IE_NW_37_188	Eske	Lake	Donegal County Council	SAC;	Moderate	Good	Good	Good	2021 or earlier	Review					View WB Page	View WB on EPA Water Map
37	IE_NW_37_194	Croagh	Lake	Donegal County Council		Unassigned	Unassigned	Good	Good	2021 or earlier	Review					View WB Page	View WB on EPA Water Map
37	IE_NW_37_195	Glencoagh	Lake	Donegal County Council	DWPA;	Unassigned	Unassigned	Good	Good	2021 or earlier	Not at risk					View WB Page	View WB on EPA Water Map
37	IE_NW_37_197	Dunragh	Lake	Donegal County Council	SAC; SPA;	Unassigned	Good	Good	Good	2021 or earlier	Review			Laghy Stream - Bridgetown	LAWPRO, Restoration	View WB Page	View WB on EPA Water Map
37	IE_NW_37_200	Nalugraman	Lake	Donegal County Council	DWPA; SAC;	Unassigned	Good	High	Good	2021 or earlier	Not at risk			Donegal SW and Murlins	LAWPRO, Restoration	View WB Page	View WB on EPA Water Map
37	IE_NW_37_208	St. Peters	Lake	Donegal County Council	DWPA;	Unassigned	Unassigned	Good	Good	2021 or earlier	Not at risk					View WB Page	View WB on EPA Water Map
37	IE_NW_37_210	Cullionboy	Lake	Donegal County Council	DWPA;	Unassigned	Unassigned	High	Good	2021 or earlier	Not at risk					View WB Page	View WB on EPA Water Map
37	IE_NW_37_22	Fad Barnesmore Gap	Lake	Donegal County Council	DWPA;	Unassigned	High	High	Good	2021 or earlier	Not at risk					View WB Page	View WB on EPA Water Map
37	IE_NW_37B010075	BALLAGHDOO_010	River	Donegal County Council		Poor	Bad	Poor	Good	2022-2027	At risk	Chemical, Nutrients	Ind, Ag	Donegal SW and Murlins	LAWPRO, Restoration	View WB Page	View WB on EPA Water Map
37	IE_NW_37B010200	BALLAGHDOO_020	River	Donegal County Council		Poor	Poor	Poor	Good	2022-2027	At risk	Chemical, Nutrients, UnknownImpactType	Ag, UR	Donegal SW and Murlins	LAWPRO, Restoration	View WB Page	View WB on EPA Water Map
37	IE_NW_37B020200	BALLINTRA_010	River	Donegal County Council	SAC;	Moderate	Moderate	Good	Good	2021 or earlier	Not at risk			Laghy Stream - Bridgetown	LAWPRO, Restoration	View WB Page	View WB on EPA Water Map
37	IE_NW_37B030030	BRIDGETOWN (DONEGAL)_010	River	Donegal County Council	SAC; SPA;	Good	High	Good	High	2022-2027	Review			Laghy Stream - Bridgetown	LAWPRO, Restoration	View WB Page	View WB on EPA Water Map
37	IE_NW_37B030200	BRIDGETOWN (DONEGAL)_020	River	Donegal County Council		Good	Good	Good	Good	2021 or earlier	Not at risk			Laghy Stream - Bridgetown	LAWPRO, Restoration	View WB Page	View WB on EPA Water Map
37	IE_NW_37B030620	BRIDGETOWN (DONEGAL)_030	River	Donegal County Council	SAC; SPA;	Unassigned	Moderate	Good	Good	2021 or earlier	Not at risk			Laghy Stream - Bridgetown	LAWPRO, Restoration	View WB Page	View WB on EPA Water Map
37	IE_NW_37B040300	BUNLACKY_010	River	Donegal County Council		Good	Good	High	High	2021 or earlier	Not at risk			Bunlacky_Blue Dot	LAWPRO, Restoration	View WB Page	View WB on EPA Water Map
37	IE_NW_37B050590	BALLYKILLOWEN STREAM_010	River	Donegal County Council	SAC; SPA;	Unassigned	Poor	Good	Good	2021 or earlier	Not at risk					View WB Page	View WB on EPA Water Map

37	IE_NW_37B090770	BALLYMAGRORTY_SCOTCH_010	River	Donegal County Council	SAC; SPA;	Unassigned	Moderate	Moderate	Good	2022-2027	Review			Laghy Stream - Bridgetown	LAWPRO, Restoration	View WB Page	View WB on EPA Water Map
37	IE_NW_37B260880	BOGSIDE_010	River	Donegal County Council		Unassigned	Good	Good	Good	2021 or earlier	Review					View WB Page	View WB on EPA Water Map
37	IE_NW_37C010100	CORABBER_010	River	Donegal County Council	SAC;	Good	Good	Good	High	2022-2027	At risk	Sediment, UnknownImpactType	For, Unknown	Corabber_Blue Dot	LAWPRO, Restoration	View WB Page	View WB on EPA Water Map
37	IE_NW_37C030700	CROW_010	River	Donegal County Council		Poor	Poor	Moderate	Good	2022-2027	At risk	Sediment, Hydrological, Morphological, Nutrients	Ag, For	Donegal SW and Murlins	LAWPRO, Restoration	View WB Page	View WB on EPA Water Map
37	IE_NW_37C050200	CLOGHANMORE_010	River	Donegal County Council	SAC; SPA;	Poor	Poor	Poor	Good	2022-2027	At risk	Chemical, Nutrients	Ag	Donegal SW and Murlins	LAWPRO, Restoration	View WB Page	View WB on EPA Water Map
37	IE_NW_37C060400	CLOGHER (DONEGAL)_010	River	Donegal County Council	SAC;	Poor	Good	Good	Good	2021 or earlier	Not at risk					View WB Page	View WB on EPA Water Map
37	IE_NW_37C080400	CUNLIN LOUGH STREAM_010	River	Donegal County Council	NSA;	Good	Moderate	Good	Good	2021 or earlier	Not at risk					View WB Page	View WB on EPA Water Map
37	IE_NW_37C240980	CLARCARRICKNAGUN_010	River	Donegal County Council	SAC; SPA;	Unassigned	Good	Good	Good	2021 or earlier	Not at risk					View WB Page	View WB on EPA Water Map
37	IE_NW_37C330730	COOL_MORE_010	River	Donegal County Council		Unassigned	Unassigned	Good	Good	2021 or earlier	Review					View WB Page	View WB on EPA Water Map
37	IE_NW_37D010400	DRUMMENY_010	River	Donegal County Council	SAC;	Good	Good	Good	Good	2021 or earlier	Not at risk					View WB Page	View WB on EPA Water Map
37	IE_NW_37D460520	DRUMNAKILLY_010	River	Donegal County Council		Unassigned	Unassigned	Good	Good	2021 or earlier	Review					View WB Page	View WB on EPA Water Map
37	IE_NW_37E010200	EANYBEG WATER_010	River	Donegal County Council	SAC; SPA;	High	High	High	High	2021 or earlier	Not at risk					View WB Page	View WB on EPA Water Map
37	IE_NW_37E010700	EANYBEG WATER_020	River	Donegal County Council	SAC;	High	High	High	High	2021 or earlier	Not at risk					View WB Page	View WB on EPA Water Map
37	IE_NW_37E020050	EANYMORE WATER_010	River	Donegal County Council	SAC;	Good	Good	Good	Good	2021 or earlier	Not at risk					View WB Page	View WB on EPA Water Map
37	IE_NW_37E020150	EANYMORE WATER_020	River	Donegal County Council	SAC;	Moderate	Good	Good	Good	2021 or earlier	Not at risk					View WB Page	View WB on EPA Water Map
37	IE_NW_37E030300	EANY WATER_010	River	Donegal County Council	SAC;	Moderate	Good	Good	Good	2021 or earlier	Review					View WB Page	View WB on EPA Water Map
37	IE_NW_37E030350	EANY WATER_020	River	Donegal County Council		Unassigned	Good	Good	Good	2021 or earlier	Review					View WB Page	View WB on EPA Water Map
37	IE_NW_37E040100	GLISH_010	River	Donegal County Council		Good	Good	Good	Good	2021 or earlier	Not at risk					View WB Page	View WB on EPA Water Map
37	IE_NW_37E050200	ESKE_010	River	Donegal County Council	SAC;	Moderate	Good	Good	Good	2021 or earlier	Not at risk					View WB Page	View WB on EPA Water Map
37	IE_NW_37E050400	ESKE_020	River	Donegal County Council	DWPA; SAC; SPA;	Good	Good	Good	Good	2021 or earlier	Not at risk					View WB Page	View WB on EPA Water Map
37	IE_NW_37F010100	FINTRAGH_010	River	Donegal County Council		Good	Good	Moderate	High	2022-2027	At risk	Nutrients	Ag			View WB Page	View WB on EPA Water Map
37	IE_NW_37G010045	GLEN (CARRICK)_010	River	Donegal County Council	SAC;	Poor	Moderate	Good	Good	2021 or earlier	Not at risk			Donegal SW and Murlins	LAWPRO, Restoration	View WB Page	View WB on EPA Water Map
37	IE_NW_37G010070	GLEN (CARRICK)_020	River	Donegal County Council		Good	Good	Good	Good	2021 or earlier	Not at risk			Donegal SW and Murlins	LAWPRO, Restoration	View WB Page	View WB on EPA Water Map
37	IE_NW_37G010200	GLEN (CARRICK)_030	River	Donegal County Council		Moderate	Poor	Poor	Good	2022-2027	At risk	Nutrients, Organic, UnknownImpactType	Was, UR, Ag	Donegal SW and Murlins	LAWPRO, Restoration	View WB Page	View WB on EPA Water Map
37	IE_NW_37G020100	GLENADDRAGH_010	River	Donegal County Council		Moderate	Good	Good	Good	2021 or earlier	Review			Donegal SW and Murlins	LAWPRO, Restoration	View WB Page	View WB on EPA Water Map
37	IE_NW_37G020200	GLENADDRAGH_020	River	Donegal County Council		Poor	Poor	Poor	Good	2022-2027	At risk	Chemical, UnknownImpactType	For, Ag	Donegal SW and Murlins	LAWPRO, Restoration	View WB Page	View WB on EPA Water Map
37	IE_NW_37K090640	KILL_010	River	Donegal County Council	SPA;	Unassigned	Unassigned	Good	Good	2021 or earlier	Not at risk					View WB Page	View WB on EPA Water Map
37	IE_NW_37L010100	LOWERYMORE_010	River	Donegal County Council		Poor	Good	Moderate	Good	2022-2027	At risk	Organic	Ag			View WB Page	View WB on EPA Water Map
37	IE_NW_37L010300	LOWERYMORE_020	River	Donegal County Council		High	High	High	High	2021 or earlier	Not at risk					View WB Page	View WB on EPA Water Map
37	IE_NW_37L010400	LOWERYMORE_030	River	Donegal County Council	SAC;	Good	High	High	Good	2021 or earlier	Not at risk					View WB Page	View WB on EPA Water Map
37	IE_NW_37L020600	LAGHY STREAM_010	River	Donegal County Council	SAC;	Moderate	Moderate	High	Good	2021 or earlier	Not at risk			Laghy Stream - Bridgetown	LAWPRO, Restoration	View WB Page	View WB on EPA Water Map
37	IE_NW_37L030300	LOUGHDEERY_010	River	Donegal County Council	DWPA;	Good	Good	Good	Good	2021 or earlier	Not at risk			Stragar	LAWPRO, Restoration	View WB Page	View WB on EPA Water Map
37	IE_NW_37L370150	Leitrim Hill Stream_010	River	Donegal County Council	SAC; SPA;	Unassigned	Poor	Good	Good	2021 or earlier	Review					View WB Page	View WB on EPA Water Map
37	IE_NW_37M070870	MOUNTCHARLES_010	River	Donegal County Council	SAC; SPA;	Unassigned	Moderate	Moderate	Good	2022-2027	At risk	Nutrients, Organic	DWTS			View WB Page	View WB on EPA Water Map
37	IE_NW_37M620990	Malin Beg_010	River	Donegal County Council	SAC; SPA;	Unassigned	Good	Good	Good	2021 or earlier	Not at risk					View WB Page	View WB on EPA Water Map
37	IE_NW_37O010050	OILY_010	River	Donegal County Council	SAC; SPA;	High	High	Moderate	High	2022-2027	Review					View WB Page	View WB on EPA Water Map
37	IE_NW_37O010200	OILY_020	River	Donegal County Council		Good	Good	Moderate	Good	2022-2027	At risk	Chemical	Ag			View WB Page	View WB on EPA Water Map
37	IE_NW_37O020600	OWENTESKINY_010	River	Donegal County Council	SAC;	Good	Good	Poor	High	2022-2027	At risk	Acidification, Chemical	Unknown	Donegal SW and Murlins	LAWPRO, Restoration	View WB Page	View WB on EPA Water Map
37	IE_NW_37O030500	OWENWEE (CARRICK)_010	River	Donegal County Council	SAC; SPA;	Poor	Poor	Poor	Good	2022-2027	At risk	Sediment, Hydrological, Morphological, Nutrients	HYMO, Ag	Donegal SW and Murlins	LAWPRO, Restoration	View WB Page	View WB on EPA Water Map
37	IE_NW_37R010200	ROECHROW_010	River	Donegal County Council		Poor	Bad	Poor	Good	2022-2027	At risk	Chemical	Ag, For	Stragar	LAWPRO, Restoration	View WB Page	View WB on EPA Water Map

37	IE_NW_37S020300	STRAGAR_010	River	Donegal County Council	NSA;	Moderate	Poor	Poor	Good	2022-2027	At risk	Hydrological, Morphological, Chemical, Nutrients, Organic	Ag, Ab, HYMO, Ind	Stragar	LAWPRO, Restoration	View WB Page	View WB on EPA Water Map
37	IE_NW_37T010400	TULLINTEANE_010	River	Donegal County Council		Good	High	Moderate	High	2022-2027	At risk	Chemical	Unknown			View WB Page	View WB on EPA Water Map
37	IE_NW_040_0100	Durnesh Lough	Transitional	Donegal County Council	SAC; SPA;	Poor	Poor	Poor	Good	2022-2027	Review					View WB Page	View WB on EPA Water Map
37	IE_NW_050_0100	Inner Donegal Bay	Transitional	Donegal County Council	SAC; SPA; SF;	Good	Good	Good	Good	2021 or earlier	Not at risk					View WB Page	View WB on EPA Water Map
37	IE_NW_060_0100	Eany Water Estuary	Transitional	Donegal County Council	SF;	Unassigned	High	High	Good	2021 or earlier	Not at risk					View WB Page	View WB on EPA Water Map
37	IE_NW_090_0100	Teelin Bay	Transitional	Donegal County Council	SAC; SPA;	Unassigned	High	High	Good	2021 or earlier	Not at risk					View WB Page	View WB on EPA Water Map