

Cycle 3

HA 35 Sligo Bay & Drowes Catchment Report, May 2024

Introduction

Water Quality  
Summary

High Status  
Objectives

Water Quality  
Changes

WFD Risk

Significant  
Pressures

Action

Summary  
Information

# Introduction

This report provides an overview of the water quality in the Sligo Bay & Drowes Catchment and the pressures impacting on water quality. This report is based on data up to 2021. The latest water quality data, dashboards and maps throughout this report are available on [catchments.ie](https://catchments.ie) and [EPA Water Map](https://epa.ie/water-map).

The Sligo Bay & Drowes Catchment includes streams entering tidal water in Sligo Bay and between Lenadoon Point and Aughrus Point, Co. Donegal. The catchment area is 1,866km<sup>2</sup>. The largest urban centre is Sligo. The other main urban centres are Ballymote, Collooney, Ballysadare and Manorhamilton.

The Sligo Bay & Drowes Catchment is divided into 13 subcatchments and has 100 surface water bodies and 43 groundwater bodies.

[View the Sligo Bay & Drowes Catchment on the EPA Water Map](#)

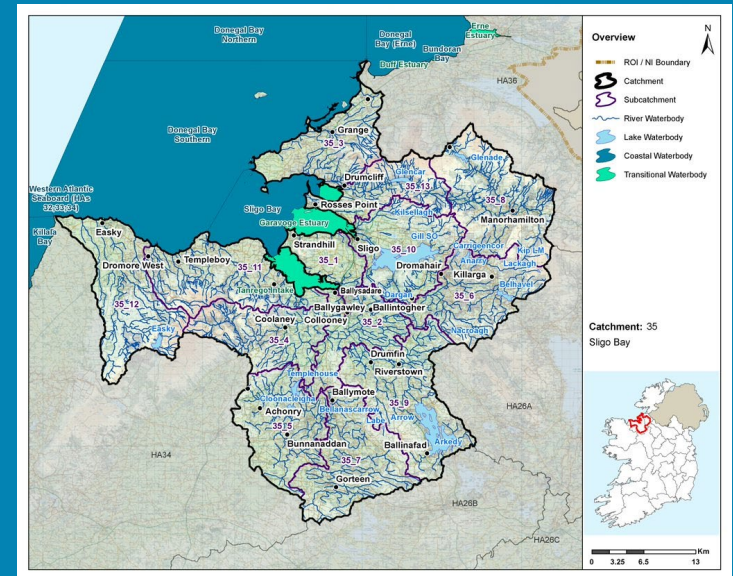
## Previous Catchment Assessments

Previous catchment assessments, which provide additional historic context and information, are archived on [catchments.ie](https://catchments.ie):

- [Cycle 2 Catchment Assessments – published September 2018](#)
- [Cycle 3 Draft Catchment Assessments – published September 2021](#)

## Online Dashboards

Links to online dashboards are provided in this report – these numbers may vary from those in this document as time progress and the online dashboards are updated based on the latest data and scientific assessments.



Overview of Subcatchments in the Sligo Bay & Drowes Catchment

# Water Quality Summary

Introduction

Water Quality Summary

High Status Objectives

Water Quality Changes

WFD Risk

Significant Pressures

Action

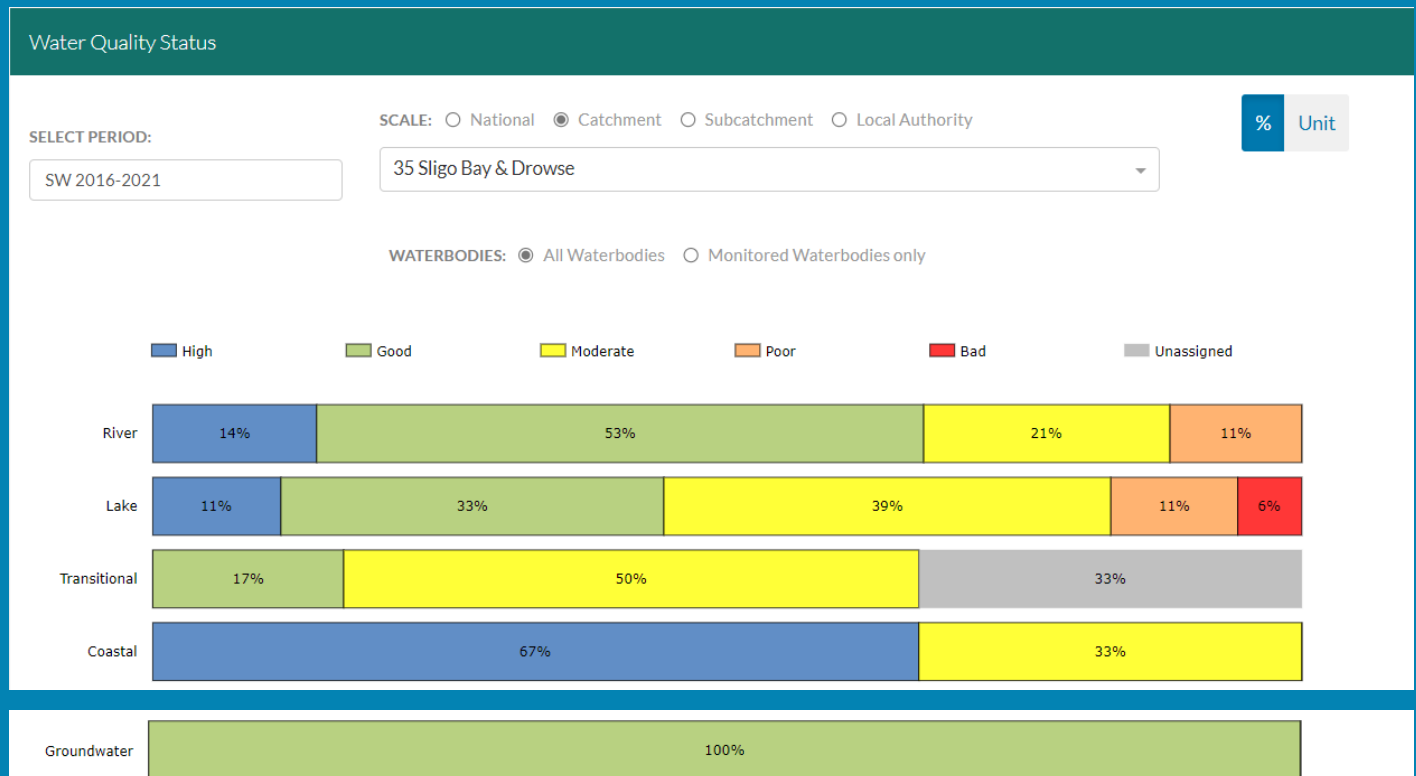
Summary Information

The dashboard below provides a breakdown of water quality status for surface and groundwater bodies in the Sligo Bay & Drowes Catchment.

A total of 60% of surface waterbodies were at Good or High Ecological Status in the 2016-2021 monitoring period. One hundred percent of groundwater bodies were at Good status.

**Go to EPA Water Maps for WFD Status**

[EPA Water Map](#)



Water quality status 2016-2021 for the Sligo Bay & Drowes Catchment.

View Online Dashboard: <https://www.catchments.ie/data/#/dashboard/waterquality>

# High Status Objective Waterbodies

Introduction

High status waters are prioritised for protection and action.

There are 14 waterbodies with a **High Ecological Status Objective (HSO)** in the Sligo Bay & Drowes Catchment, with eight currently not meeting their environmental objective of High.

Water Quality Summary

Grants for septic tank upgrades may be available in high status objective catchment areas - you can learn more and check your Eircode for eligibility here: <https://www.gov.ie/en/publication/6cc1e-domestic-waste-water-treatment-systems-septic-tanks>

High Status Objectives

[View HSO river waterbodies in this catchment.](#)

See *Status and Risk / High Status Objective* for other waterbody types.

Water Quality Changes

WFD Risk

Significant Pressures

Action

Summary Information

Water Quality Status - High Status Objective Waterbodies

SCALE:  Catchment  Local Authority

SELECT TYPE:

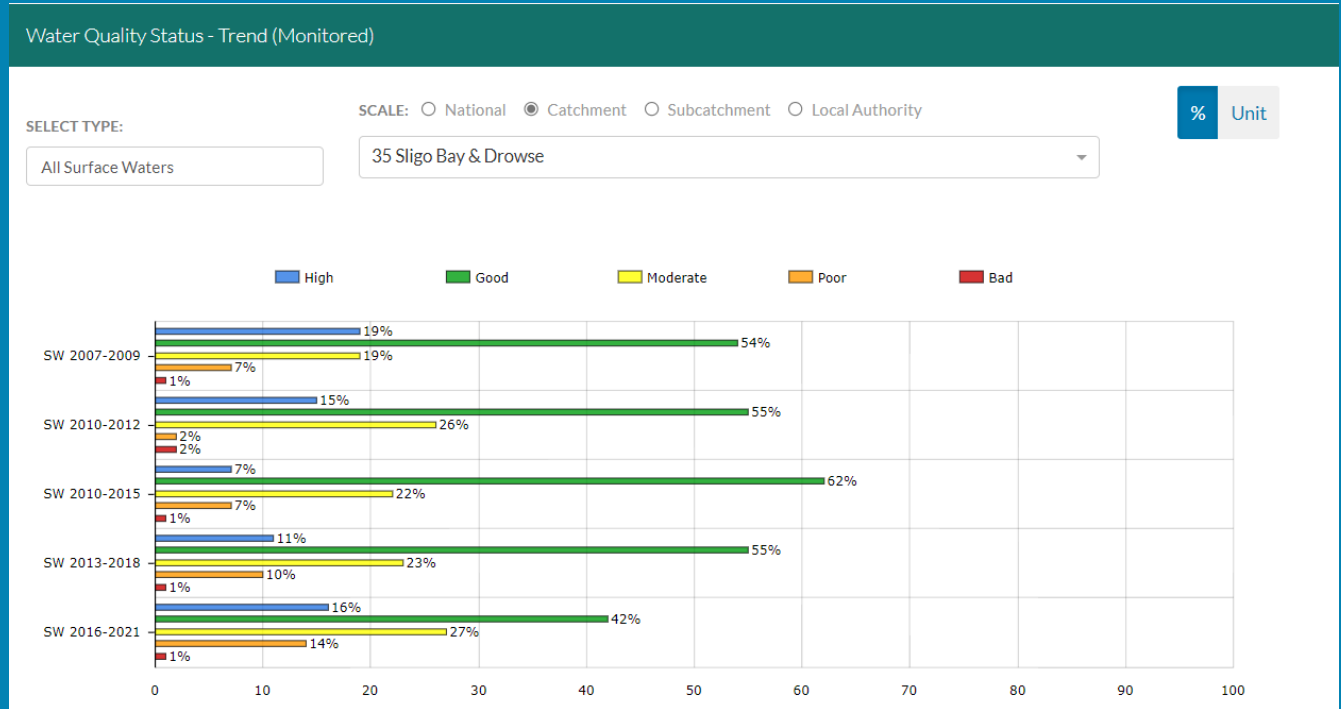
	SW 2007-2009	SW 2010-2012	SW 2010-2015	SW 2013-2018	SW 2016-2021
BONET_020 (River)	High	High	Good	High	High
CLOONEEN (SLIGO)_030 (River)	High	High	Good	Good	Good
DUNMORAN_010 (River)	High	Moderate	Moderate	Good	Good
DUNNEILL_010 (River)	High	Good	Good	Good	Good
Easky (Lake)	High	Good	Good	Good	Good
EASKY_030 (River)	Good	High	High	High	High
EASKY_040 (River)	High	High	High	Good	High
FINNED_010 (River)	High	High	Good	Good	Good
KILLANUMMERY_020 (River)	High	High	High	Good	Good
LISKEAGH_010 (River)	High	Unassigned	Good	Good	High
SHANVAUS_010 (River)	High	High	Good	Good	Good
Sligo Bay (Coastal)	High	Good	High	Good	Moderate
UNSHIN_040 (River)	High	High	Good	High	High
UNSHIN_050 (River)	High	High	Good	High	High

Water quality status for High Ecological Status Objective waterbodies.

View Online Dashboard: <https://www.catchments.ie/data/#/dashboard/waterquality>

# Water Quality Changes

Below illustrates the changes in ecological status in monitored surface waterbodies over the last five monitoring cycles in the Sligo Bay & Drowes Catchment. Nationally while there have been improvements in some waterbodies, these have been offset by declines elsewhere.



Ecological status trends for monitored surface waterbodies over the last five monitoring cycles in the Sligo Bay & Drowes Catchment. **View online dashboard:** <https://www.catchments.ie/data/#/dashboard/waterquality>

A total of 94 (67%) waterbodies are currently meeting their environmental objective of Good or High Ecological Status.

	Total	Achieving Environmental Objectives (2016-2021)	High Status Environmental Objectives Waterbodies	Achieving High Status Environmental Objectives (2016-2021)
<b>Rivers</b>	70	41 (59%)	12	6 (50%)
<b>Canals</b>	-	-	-	-
<b>Lakes</b>	18	7 (39%)	1	0 (0%)
<b>Transitional</b>	6	1 (17%)	-	-
<b>Coastal</b>	6	4 (67%)	1	0 (0%)
<b>Groundwater</b>	41	41 (100%)	-	-

Introduction

Water Quality Summary

High Status Objectives

Water Quality Changes

WFD Risk

Significant Pressures

Action

Summary Information

# WFD Risk

Introduction

Water Quality Summary

High Status Objectives

Water Quality Changes

WFD Risk

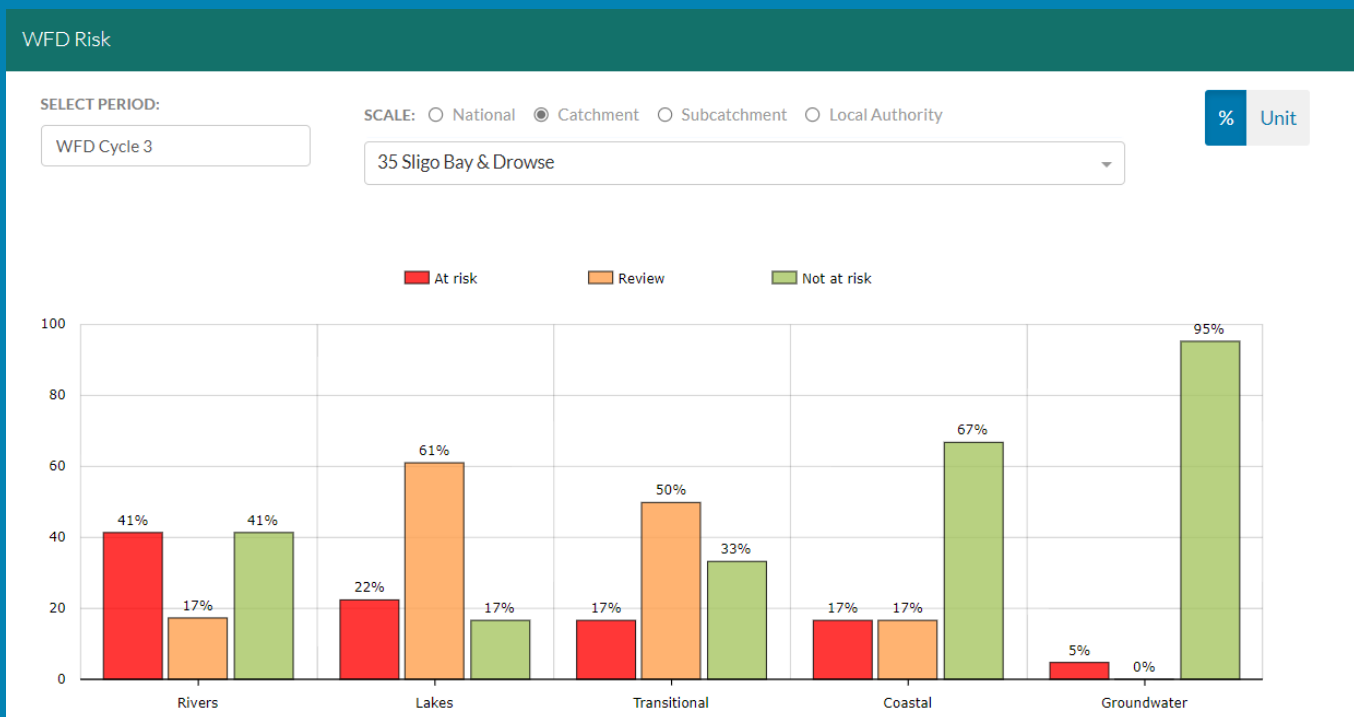
Significant Pressures

Action

Summary Information

A total of 37 (26%) waterbodies are *At Risk* of not meeting their environmental objective in the Sligo Bay & Drowes Catchment, while 27 (19%) are under *Review* and 77 (55%) are *Not At Risk*.

Go to [EPA Water Map](#) to see WFD Risk for this catchment



WFD Risk for the Sligo Bay & Drowes Catchment based on 2016-2021 data.

View Online Dashboard: <https://www.catchments.ie/data/#/dashboard/waterquality>

There are currently no heavily modified water bodies (HMWBs) in the Sligo Bay & Drowes Catchment.

There are no artificial waterbodies in the Sligo Bay & Drowes Catchment.

The [EPA's characterisation outcome report](#) has more information on WFD Risk

Introduction

Water Quality  
Summary

High Status  
Objectives

Water Quality  
Changes

WFD Risk

Significant  
Pressures

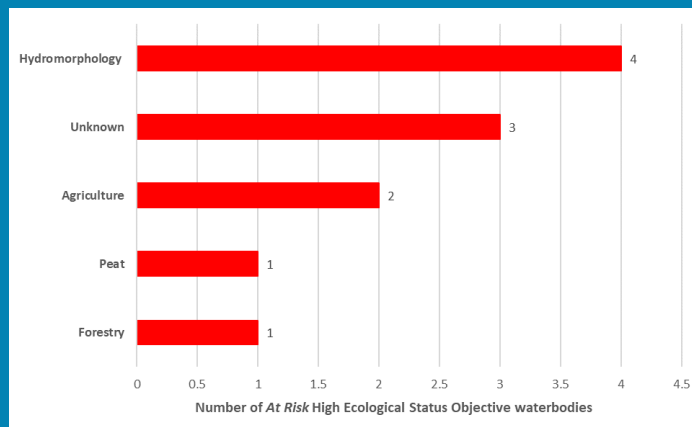
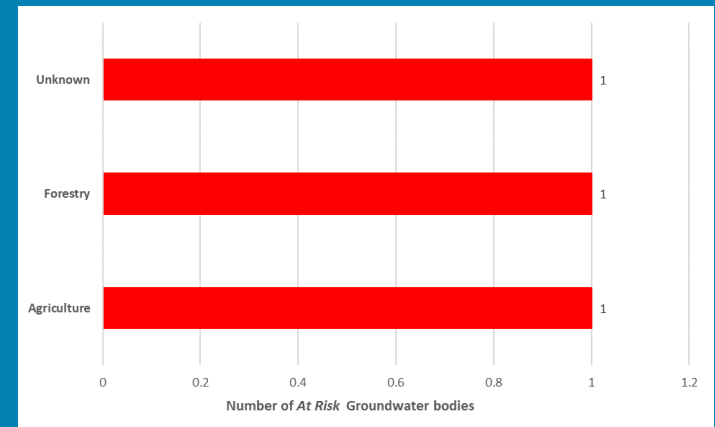
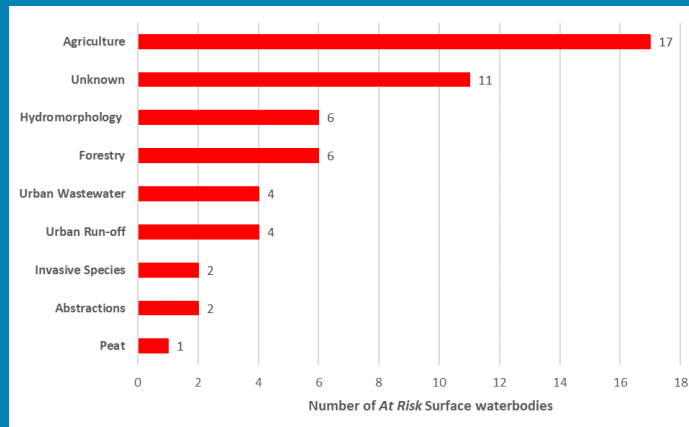
Action

Summary  
Information

## Significant Pressures driving risk

Click [here](#) for more information on significant pressures

Significant pressure types impacting the 35 *At Risk* surface waterbodies and two groundwater bodies are broken down in the figures below, including significant pressure information for the eight *At Risk* High Ecological Status Objective waterbodies.



The issues driven by these pressures are mainly nutrient pollution, altered morphological condition (habitat) and organic pollution impacts for surface water and chemical quality diminution for surface water and nutrient pollution impacts for groundwaters. For more information, see <https://www.catchments.ie/data/#/dashboard/pressure?k=i351zs>.

*Go to the Summary Information section to get significant pressure and issue data for At Risk waterbodies within the Sligo Bay & Drowes Catchment.*

# Significant Pressures

Introduction

Water Quality Summary

High Status Objectives

Water Quality Changes

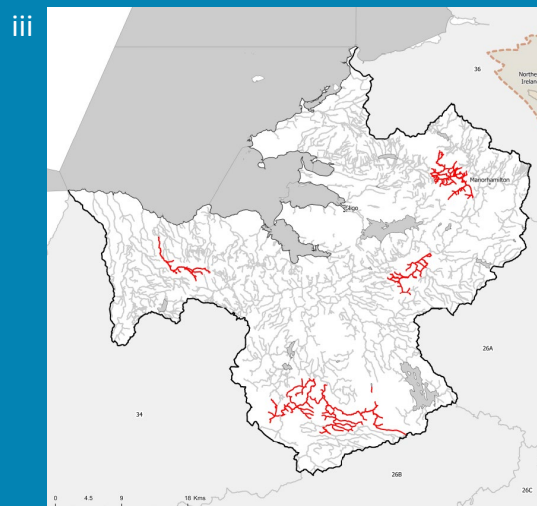
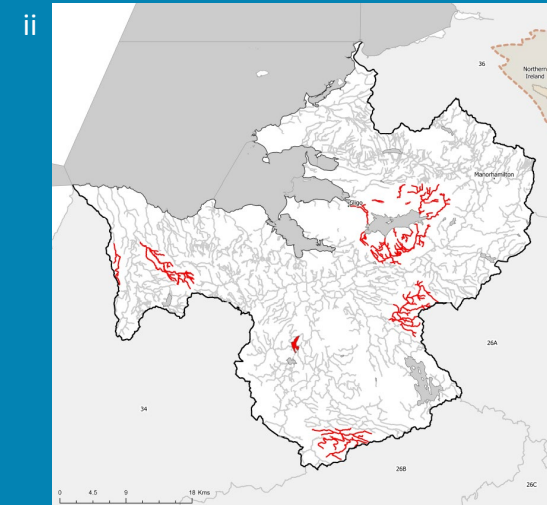
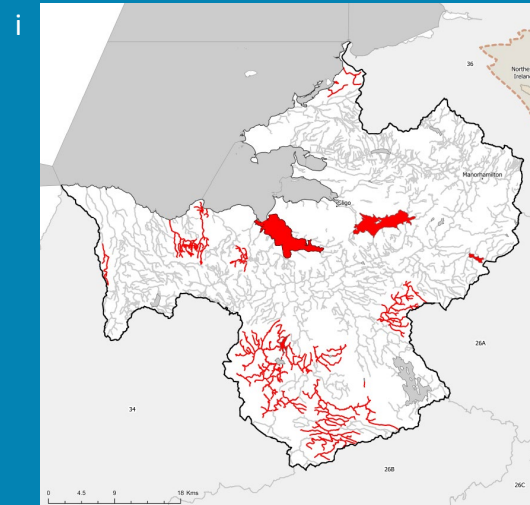
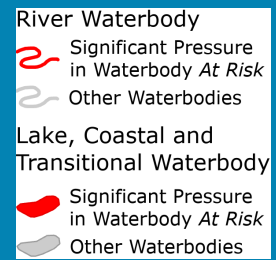
WFD Risk

Significant Pressures

Action

Summary Information

Agriculture is the top significant pressure impacting 49% of the 37 *At Risk* waterbodies within the Sligo Bay & Drowes Catchment, followed by 19% impacted by forestry and 16% by hydromorphological pressures.



**The catchments.ie dashboards will show all significant pressures identified for this catchment.**

[www.catchments.ie/data/#/dashboard/pressure](http://www.catchments.ie/data/#/dashboard/pressure)

**Go to the [EPA Water Maps](#) for the locations of all significant pressure types identified for this catchment**

*Locations of At Risk surface waterbodies impacted by i) Agriculture, ii) Forestry and iii) Hydromorphological Pressures.*

Introduction

Water Quality  
Summary

High Status  
Objectives

Water Quality  
Changes

WFD Risk

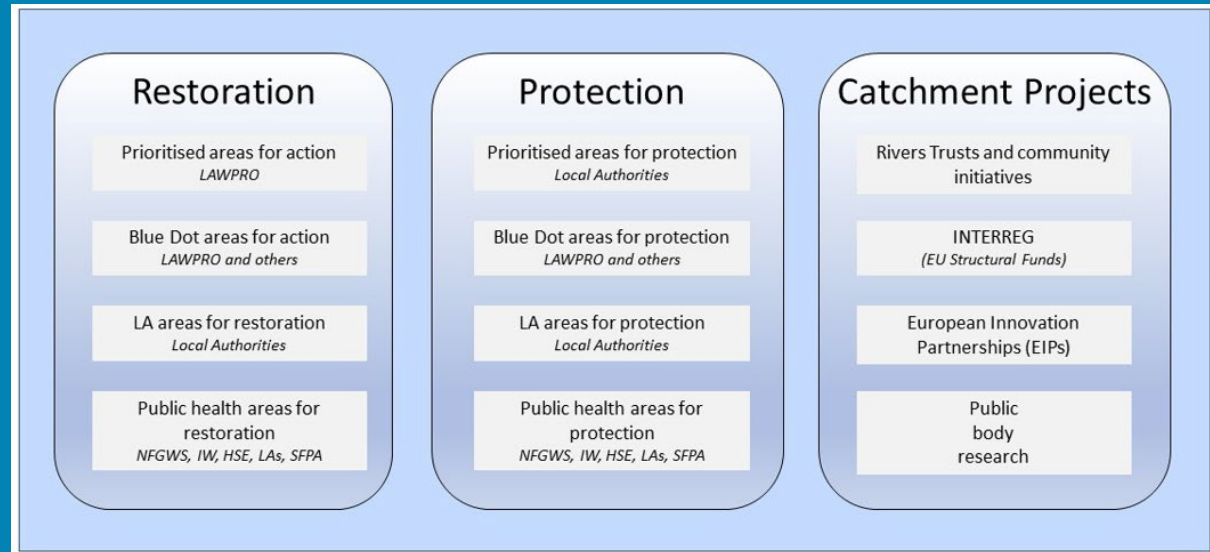
Significant  
Pressures

Action

Summary  
Information

## Priority Areas for Action

A number of waterbodies have been prioritised through the selection of Areas for Action. There were five Priority Areas for Action identified for the second river basin management planning cycle in the Sligo Bay & Drowes Catchment. This has increased to a total of 12 Areas for Restoration and one Area for Protection for the third cycle. ***Go to the summary information section to get Area for Action information for waterbodies within the Sligo Bay & Drowes Catchment.***



*Types of Areas for Action under the third cycle River Basin Management Plan*

- View the current progress of Areas for Action and Summary Reports completed by LAWPRO, on catchments.ie and the EPA Water Map:
  - <https://www.catchments.ie/data/#/areaforaction>
  - [https://gis.epa.ie/EPAMaps/default?eastings=?&northing=?&lid=EPA:WFD\\_AreasForAction](https://gis.epa.ie/EPAMaps/default?eastings=?&northing=?&lid=EPA:WFD_AreasForAction)
- LAWPRO have also published detailed desktop studies on Prioritised Areas for Action (PAAs) which are available their website: <https://lawaters.ie/desktop-studies/>
- Information on Areas for Action for the second cycle is available in Cycle 2 Catchment Assessments which have been archived on catchments.ie: <https://www.catchments.ie/download/cycle-2-catchment-assessments-published-september-2018/>

Introduction

Water Quality  
Summary

High Status  
Objectives

Water Quality  
Changes

WFD Risk

Significant  
Pressures

Action

Summary  
Information

## Summary information for all waterbodies in the Sligo Bay & Drowes Catchment

The next page provides a table with a breakdown of key information for all waterbodies in this catchment. The key is provided below. Additional information for each waterbody is available on <https://www.catchments.ie/data>, including a breakdown of status, a monitoring schedule for monitored waterbodies and downloadable chemistry results, where available.

<b>Protected Area categories</b>	BW: Bathing Water DW: Drinking Water Fish: Salmonid Waters NSA: Nutrient Sensitive Areas SAC: Special Area of Conservation, Natura 2000 (water dependent habitats and species) SF: Shellfish Area SPA: Special Area of Protection, Natura 2000 (water dependent habitat and species)
<b>Significant pressure* types categories</b>  <i>* For At Risk waterbodies only</i>	Ab: Abstractions Ag: Agriculture Aq: Aquaculture At: Atmospheric DWW: Domestic Wastewater For: Forestry HPS: Historically polluted sites HYMO: Hydromorphology Ind: Industry IS: Invasive Species M+Q: Mines and Quarries Peat: Peat Drainage and Extraction UR: Urban Run-Off UWW: Urban Wastewater Was: Waste WT: Water Treatment

Catchment Code	Waterbody (WB) Code	WB Name	WB Type	Local Authority	Protected Area	Status 10-15	Status 13-18	Status 16-21	Environmental Objective	Environmental Objective Date	WFD Risk 16-21	Significant Issue(s)	Significant Pressure(s)	Area for Action (AFA)	AFA (lead, type)	Link to WB page on catchments.ie	Link to WB on EPA Water Map
35, 36, 37	IE_NW_010_0000	Donegal Bay (Erne)	Coastal	Donegal County Council	BW; SAC; SPA; SF;	Unassigned	High	High	Good	2021 or earlier	Not at risk					<a href="#">View WB Page</a>	<a href="#">View WB on EPA Water Map</a>
35, 37	IE_NW_070_0000	Donegal Bay Northern	Coastal	Donegal County Council	BW; SAC; SPA;	Unassigned	High	High	Good	2021 or earlier	Not at risk					<a href="#">View WB Page</a>	<a href="#">View WB on EPA Water Map</a>
31, 32, 33, 34, 35	IE_WE_250_0000	Western Atlantic Seaboard (HAS 32;33;34)	Coastal	Mayo County Council	BW; SAC; SPA; SF;	Unassigned	High	High	Good	2021 or earlier	Not at risk					<a href="#">View WB Page</a>	<a href="#">View WB on EPA Water Map</a>
34, 35	IE_WE_430_0000	Donegal Bay Southern	Coastal	Sligo County Council	BW; SAC; SPA;	Unassigned	High	High	Good	2021 or earlier	Not at risk					<a href="#">View WB Page</a>	<a href="#">View WB on EPA Water Map</a>
35	IE_WE_450_0000	Sligo Bay	Coastal	Sligo County Council	BW; SAC; SPA; SF;	High	Good	Moderate	High	2022-2027	At risk	UnknownImpactType	Unknown			<a href="#">View WB Page</a>	<a href="#">View WB on EPA Water Map</a>
35	IE_WE_460_0200	Portavaud East, Ballysadare Bay	Coastal	Sligo County Council	SAC; SPA;	Unassigned	Unassigned	Moderate	Good	2022-2027	Review					<a href="#">View WB Page</a>	<a href="#">View WB on EPA Water Map</a>
26A, 35, 36	IE_NW_G_042	Glenfarne	Groundwater	Leitrim County Council	DWPA; SAC	Good	Good	Good	Good	2021 or earlier	Not at risk					<a href="#">View WB Page</a>	<a href="#">View WB on EPA Water Map</a>
35, 36	IE_NW_G_043	Glenaniff	Groundwater	Leitrim County Council	DWPA; SAC	Good	Good	Good	Good	2021 or earlier	Not at risk					<a href="#">View WB Page</a>	<a href="#">View WB on EPA Water Map</a>
35, 36	IE_NW_G_045	Largydonnell	Groundwater	Leitrim County Council	DWPA; SAC	Good	Good	Good	Good	2021 or earlier	Not at risk					<a href="#">View WB Page</a>	<a href="#">View WB on EPA Water Map</a>
35, 36	IE_NW_G_046	Ballaghnatrillick	Groundwater	Leitrim County Council	DWPA; SAC	Good	Good	Good	Good	2021 or earlier	Not at risk					<a href="#">View WB Page</a>	<a href="#">View WB on EPA Water Map</a>
35, 36	IE_NW_G_073	Tievebaun	Groundwater	Leitrim County Council	DWPA; SAC	Good	Good	Good	Good	2021 or earlier	Not at risk					<a href="#">View WB Page</a>	<a href="#">View WB on EPA Water Map</a>
35, 36	IE_NW_G_074	Kiltyclogher	Groundwater	Leitrim County Council	DWPA	Good	Good	Good	Good	2021 or earlier	Not at risk					<a href="#">View WB Page</a>	<a href="#">View WB on EPA Water Map</a>
26A, 26B, 26C, 34, 35, 36	IE_SH_G_073	Curlew Mountains	Groundwater	Sligo County Council	DWPA; SAC	Good	Good	Good	Good	2021 or earlier	Not at risk					<a href="#">View WB Page</a>	<a href="#">View WB on EPA Water Map</a>
26A, 35, 36	IE_SH_G_105	Geevagh	Groundwater	Sligo County Council	DWPA	Good	Good	Good	Good	2021 or earlier	At risk	ChemicalQualityDiminution ForSW, Nutrients	Unknown, Ag			<a href="#">View WB Page</a>	<a href="#">View WB on EPA Water Map</a>
26A, 26B, 34, 35	IE_WE_G_0028	Gorteen	Groundwater	Sligo County Council	DWPA; SAC	Good	Good	Good	Good	2021 or earlier	Not at risk					<a href="#">View WB Page</a>	<a href="#">View WB on EPA Water Map</a>
34, 35	IE_WE_G_0029	Tobercurry	Groundwater	Sligo County Council	DWPA	Good	Good	Good	Good	2021 or earlier	Not at risk					<a href="#">View WB Page</a>	<a href="#">View WB on EPA Water Map</a>
26B, 34, 35	IE_WE_G_0032	Kilkelly Charlestown	Groundwater	Mayo County Council	DWPA; SAC	Good	Good	Good	Good	2021 or earlier	Not at risk					<a href="#">View WB Page</a>	<a href="#">View WB on EPA Water Map</a>
26B, 26D, 30, 32, 34, 35	IE_WE_G_0033	Swinford	Groundwater	Mayo County Council	DWPA; SAC	Good	Good	Good	Good	2021 or earlier	Not at risk					<a href="#">View WB Page</a>	<a href="#">View WB on EPA Water Map</a>
32, 34, 35	IE_WE_G_0034	Foxford	Groundwater	Mayo County Council	DWPA; SAC	Good	Good	Good	Good	2021 or earlier	Not at risk					<a href="#">View WB Page</a>	<a href="#">View WB on EPA Water Map</a>
26A, 35	IE_WE_G_0036	Riverstown	Groundwater	Sligo County Council	DWPA	Good	Good	Good	Good	2021 or earlier	Not at risk					<a href="#">View WB Page</a>	<a href="#">View WB on EPA Water Map</a>
26A, 34, 35	IE_WE_G_0037	Ballymote	Groundwater	Sligo County Council	DWPA; SAC	Good	Good	Good	Good	2021 or earlier	Not at risk					<a href="#">View WB Page</a>	<a href="#">View WB on EPA Water Map</a>
34, 35	IE_WE_G_0038	Lavagh-Ballintougher	Groundwater	Sligo County Council	DWPA; SAC	Good	Good	Good	Good	2021 or earlier	Not at risk					<a href="#">View WB Page</a>	<a href="#">View WB on EPA Water Map</a>
34, 35	IE_WE_G_0039	Ballygawley	Groundwater	Sligo County Council	DWPA; SAC	Good	Good	Good	Good	2021 or earlier	Not at risk					<a href="#">View WB Page</a>	<a href="#">View WB on EPA Water Map</a>
35	IE_WE_G_0040	Carrowmore West	Groundwater	Sligo County Council	DWPA; SAC	Good	Good	Good	Good	2021 or earlier	Not at risk					<a href="#">View WB Page</a>	<a href="#">View WB on EPA Water Map</a>
35	IE_WE_G_0042	Carrowmore East	Groundwater	Sligo County Council	DWPA; SAC	Good	Good	Good	Good	2021 or earlier	At risk	ChemicalQualityDiminution ForSW, Nutrients	For			<a href="#">View WB Page</a>	<a href="#">View WB on EPA Water Map</a>
35	IE_WE_G_0043	Beltra-Sligo	Groundwater	Sligo County Council	DWPA; SAC	Good	Good	Good	Good	2021 or earlier	Not at risk					<a href="#">View WB Page</a>	<a href="#">View WB on EPA Water Map</a>
35, 36	IE_WE_G_0044	Drumcliff-Strandhill	Groundwater	Sligo County Council	DWPA; SAC	Good	Good	Good	Good	2021 or earlier	Not at risk					<a href="#">View WB Page</a>	<a href="#">View WB on EPA Water Map</a>
34, 35	IE_WE_G_0048	Collooney	Groundwater	Sligo County Council	DWPA; SAC	Good	Good	Good	Good	2021 or earlier	Not at risk					<a href="#">View WB Page</a>	<a href="#">View WB on EPA Water Map</a>
34, 35	IE_WE_G_0049	Easky West	Groundwater	Sligo County Council	DWPA; SAC	Good	Good	Good	Good	2021 or earlier	Not at risk					<a href="#">View WB Page</a>	<a href="#">View WB on EPA Water Map</a>
34, 35	IE_WE_G_0050	Easky East	Groundwater	Sligo County Council	DWPA; SAC	Good	Good	Good	Good	2021 or earlier	Not at risk					<a href="#">View WB Page</a>	<a href="#">View WB on EPA Water Map</a>
35	IE_WE_G_0051	Ballintougher	Groundwater	Leitrim County Council	DWPA; SAC	Good	Good	Good	Good	2021 or earlier	Not at risk					<a href="#">View WB Page</a>	<a href="#">View WB on EPA Water Map</a>
35	IE_WE_G_0053	Rosses Point	Groundwater	Sligo County Council	DWPA; SAC	Good	Good	Good	Good	2021 or earlier	Not at risk					<a href="#">View WB Page</a>	<a href="#">View WB on EPA Water Map</a>
35	IE_WE_G_0054	Dromahair	Groundwater	Leitrim County Council	DWPA; SAC	Good	Good	Good	Good	2021 or earlier	Not at risk					<a href="#">View WB Page</a>	<a href="#">View WB on EPA Water Map</a>
35, 36	IE_WE_G_0055	Killarga	Groundwater	Leitrim County Council	DWPA; SAC	Good	Good	Good	Good	2021 or earlier	Not at risk					<a href="#">View WB Page</a>	<a href="#">View WB on EPA Water Map</a>
35, 36	IE_WE_G_0056	Killarga South	Groundwater	Leitrim County Council	DWPA; SAC	Good	Good	Good	Good	2021 or earlier	Not at risk					<a href="#">View WB Page</a>	<a href="#">View WB on EPA Water Map</a>
35	IE_WE_G_0058	Yellow Strand	Groundwater	Sligo County Council	DWPA; SAC	Good	Good	Good	Good	2021 or earlier	Not at risk					<a href="#">View WB Page</a>	<a href="#">View WB on EPA Water Map</a>
35, 36	IE_WE_G_0059	Glenade	Groundwater	Leitrim County Council	DWPA; SAC	Good	Good	Good	Good	2021 or earlier	Not at risk					<a href="#">View WB Page</a>	<a href="#">View WB on EPA Water Map</a>
35, 36	IE_WE_G_0060	Glencair	Groundwater	Leitrim County Council	DWPA; SAC	Good	Good	Good	Good	2021 or earlier	Not at risk					<a href="#">View WB Page</a>	<a href="#">View WB on EPA Water Map</a>

35	IE_WE_G_0061	Grange West	Groundwater	Sligo County Council	DWPA; SAC	Good	Good	Good	Good	2021 or earlier	Not at risk					<a href="#">View WB Page</a>	<a href="#">View WB on EPA Water Map</a>
35, 36	IE_WE_G_0062	Grange East	Groundwater	Sligo County Council	DWPA; SAC	Good	Good	Good	Good	2021 or earlier	Not at risk					<a href="#">View WB Page</a>	<a href="#">View WB on EPA Water Map</a>
34, 35	IE_WE_G_0104	GWLTE-Turloughmore Sligo (SAC000637)	Groundwater	Sligo County Council	DWPA; SAC (GWLTE)	Good	Good	Good	Good	2021 or earlier	Not at risk					<a href="#">View WB Page</a>	<a href="#">View WB on EPA Water Map</a>
26A, 35	IE_WE_G_0110	South Belhavel Lough	Groundwater	Leitrim County Council	DWPA	Good	Good	Good	Good	2021 or earlier	Not at risk					<a href="#">View WB Page</a>	<a href="#">View WB on EPA Water Map</a>
26A, 35, 36	IE_WE_G_0111	North Belhavel Lough	Groundwater	Leitrim County Council	DWPA; SAC	Good	Good	Good	Good	2021 or earlier	Not at risk					<a href="#">View WB Page</a>	<a href="#">View WB on EPA Water Map</a>
35, 36	IEGBNI_NW_G_014	Tullaghan-Lough Melvin	Groundwater	Leitrim County Council	DWPA; SAC	Good	Good	Good	Good	2021 or earlier	Not at risk					<a href="#">View WB Page</a>	<a href="#">View WB on EPA Water Map</a>
35, 36	IEGBNI_NW_G_017	Kilcoo	Groundwater	Leitrim County Council	DWPA; SAC	Good	Good	Good	Good	2021 or earlier	Not at risk					<a href="#">View WB Page</a>	<a href="#">View WB on EPA Water Map</a>
35, 36	IEGBNI_NW_G_044	Rossinver	Groundwater	Leitrim County Council	DWPA; SAC	Good	Good	Good	Good	2021 or earlier	Not at risk					<a href="#">View WB Page</a>	<a href="#">View WB on EPA Water Map</a>
26A, 35, 36	IEGBNI_SH_G_002	Lough Allen Uplands	Groundwater	Leitrim County Council	DWPA; SAC	Good	Good	Good	Good	2021 or earlier	Not at risk					<a href="#">View WB Page</a>	<a href="#">View WB on EPA Water Map</a>
35	IE_WE_35_107	Dargan	Lake	Sligo County Council		Unassigned	Unassigned	Moderate	Good	2022-2027	Review					<a href="#">View WB Page</a>	<a href="#">View WB on EPA Water Map</a>
35	IE_WE_35_120	Arkedy	Lake	Roscommon County Council	SAC;	Unassigned	Unassigned	Moderate	Good	2022-2027	Review					<a href="#">View WB Page</a>	<a href="#">View WB on EPA Water Map</a>
35	IE_WE_35_131	Anarry	Lake	Leitrim County Council		Unassigned	Moderate	Moderate	Good	2022-2027	Review					<a href="#">View WB Page</a>	<a href="#">View WB on EPA Water Map</a>
35	IE_WE_35_132	Bellanascarrow	Lake	Sligo County Council		Unassigned	Unassigned	Good	Good	2021 or earlier	Review					<a href="#">View WB Page</a>	<a href="#">View WB on EPA Water Map</a>
35	IE_WE_35_136	Easky	Lake	Sligo County Council	DWPA; SAC;	Good	Good	Good	High	2022-2027	At risk	UnknownImpactType	Unknown	Easky	LAWPRO, Restoration	<a href="#">View WB Page</a>	<a href="#">View WB on EPA Water Map</a>
35	IE_WE_35_139	Glencar	Lake	Leitrim County Council	SAC;	Moderate	Moderate	Good	Good	2021 or earlier	Review			Glencar	LAWPRO, Restoration	<a href="#">View WB Page</a>	<a href="#">View WB on EPA Water Map</a>
35	IE_WE_35_142	Carrigeencor	Lake	Leitrim County Council		Unassigned	Unassigned	Moderate	Good	2022-2027	Review					<a href="#">View WB Page</a>	<a href="#">View WB on EPA Water Map</a>
35	IE_WE_35_154	Cloonacleigha	Lake	Sligo County Council	SAC;	Unassigned	Unassigned	Moderate	Good	2022-2027	Review			Owenmore Templehouse lake	LAWPRO, Restoration	<a href="#">View WB Page</a>	<a href="#">View WB on EPA Water Map</a>
35	IE_WE_35_155	Belhavel	Lake	Leitrim County Council		Moderate	Poor	Poor	Good	2022-2027	At risk	Morphological, Nutrients	Ag			<a href="#">View WB Page</a>	<a href="#">View WB on EPA Water Map</a>
35	IE_WE_35_156	Glenade	Lake	Leitrim County Council	SAC;	Poor	Good	Good	Good	2021 or earlier	Review					<a href="#">View WB Page</a>	<a href="#">View WB on EPA Water Map</a>
35	IE_WE_35_157	Templehouse	Lake	Sligo County Council	SAC;	Bad	Bad	Bad	Good	2022-2027	At risk	Morphological, Nutrients	Ag, For	Owenmore Templehouse lake	LAWPRO, Restoration	<a href="#">View WB Page</a>	<a href="#">View WB on EPA Water Map</a>
35	IE_WE_35_158	Gill SO	Lake	Sligo County Council	DWPA; SAC;	Poor	Moderate	Poor	Good	2022-2027	At risk	Hydrological, Nutrients, UnknownImpactType	Ag, Ab, IS	Lough Gill	LAWPRO, Restoration	<a href="#">View WB Page</a>	<a href="#">View WB on EPA Water Map</a>
35	IE_WE_35_159	Arrow	Lake	Sligo County Council	DWPA; SAC; SPA;	Good	Moderate	Good	Good	2021 or earlier	Review			Lough Arrow	LAWPRO, Restoration	<a href="#">View WB Page</a>	<a href="#">View WB on EPA Water Map</a>
35	IE_WE_35_17	Kilsellagh	Lake	Sligo County Council	DWPA;	Good	Good	Good	Good	2021 or earlier	Not at risk					<a href="#">View WB Page</a>	<a href="#">View WB on EPA Water Map</a>
35	IE_WE_35_188	Nacroagh	Lake	Leitrim County Council	DWPA;	Unassigned	Moderate	Moderate	Good	2022-2027	Review					<a href="#">View WB Page</a>	<a href="#">View WB on EPA Water Map</a>
35	IE_WE_35_237	Labe	Lake	Sligo County Council	DWPA; SAC;	Unassigned	Unassigned	Moderate	Good	2022-2027	Review			Keash GWS	NFGWS, Restoration	<a href="#">View WB Page</a>	<a href="#">View WB on EPA Water Map</a>
35	IE_WE_35_96	Lackagh	Lake	Leitrim County Council	DWPA; SAC;	Unassigned	High	High	Good	2021 or earlier	Not at risk					<a href="#">View WB Page</a>	<a href="#">View WB on EPA Water Map</a>
35	IE_WE_35_98	Kip LM	Lake	Leitrim County Council	SAC;	Unassigned	High	High	Good	2021 or earlier	Not at risk					<a href="#">View WB Page</a>	<a href="#">View WB on EPA Water Map</a>
35	IE_WE_35B030500	BALLYBEG (SLIGO)_010	River	Sligo County Council		Unassigned	Good	Good	Good	2021 or earlier	Review					<a href="#">View WB Page</a>	<a href="#">View WB on EPA Water Map</a>
35	IE_WE_35B040100	BALLYMOTE STREAM_010	River	Sligo County Council		Moderate	Good	Moderate	Good	2022-2027	At risk	Nutrients	Ag	Owenmore (Sligo)	LAWPRO, Restoration	<a href="#">View WB Page</a>	<a href="#">View WB on EPA Water Map</a>
35	IE_WE_35B050100	BALLYSODARE_010	River	Sligo County Council	SAC;	Good	Good	Moderate	Good	2022-2027	At risk	UnknownImpactType	Unknown			<a href="#">View WB Page</a>	<a href="#">View WB on EPA Water Map</a>
35	IE_WE_35B060050	BONET_010	River	Leitrim County Council	SAC;	Good	Good	High	Good	2021 or earlier	Not at risk					<a href="#">View WB Page</a>	<a href="#">View WB on EPA Water Map</a>
35	IE_WE_35B060100	BONET_020	River	Leitrim County Council	SAC;	Good	High	High	High	2021 or earlier	Not at risk					<a href="#">View WB Page</a>	<a href="#">View WB on EPA Water Map</a>
35	IE_WE_35B060200	BONET_030	River	Leitrim County Council	SAC;	Good	Good	Good	Good	2021 or earlier	Not at risk					<a href="#">View WB Page</a>	<a href="#">View WB on EPA Water Map</a>
35	IE_WE_35B060400	BONET_040	River	Leitrim County Council	SAC;	Good	Good	Good	Good	2021 or earlier	Not at risk					<a href="#">View WB Page</a>	<a href="#">View WB on EPA Water Map</a>
35	IE_WE_35B060630	BONET_050	River	Leitrim County Council	SAC;	Moderate	Moderate	Good	Good	2021 or earlier	Review					<a href="#">View WB Page</a>	<a href="#">View WB on EPA Water Map</a>
35	IE_WE_35B080200	BUNNANADDAN STREAM_010	River	Sligo County Council		Poor	Poor	Poor	Good	2022-2027	At risk	Nutrients, Organic	UWW, Ag	Owenmore Templehouse lake	LAWPRO, Restoration	<a href="#">View WB Page</a>	<a href="#">View WB on EPA Water Map</a>
35	IE_WE_35B090500	BUNCROWEY_010	River	Sligo County Council	SAC;	Moderate	Moderate	Moderate	Good	2022-2027	At risk	Morphological	For	Easky	LAWPRO, Restoration	<a href="#">View WB Page</a>	<a href="#">View WB on EPA Water Map</a>
35	IE_WE_35B100500	BRACKARY_010	River	Leitrim County Council		Good	Moderate	Good	Good	2021 or earlier	Not at risk					<a href="#">View WB Page</a>	<a href="#">View WB on EPA Water Map</a>
35	IE_WE_35B300790	BARNABRACK_010	River	Sligo County Council	SAC; SPA;	Unassigned	Good	Good	Good	2021 or earlier	Review			Beltra GWS	NFGWS, Restoration	<a href="#">View WB Page</a>	<a href="#">View WB on EPA Water Map</a>
35	IE_WE_35B520940	BREAGHWY 35_010	River	Sligo County Council		Unassigned	High	Good	Good	2021 or earlier	Review					<a href="#">View WB Page</a>	<a href="#">View WB on EPA Water Map</a>
35	IE_WE_35C010200	CLOONEEN (SLIGO)_010	River	Mayo County Council	SAC;	Unassigned	Moderate	Good	Good	2021 or earlier	Review			Owenmore Templehouse lake	LAWPRO, Restoration	<a href="#">View WB Page</a>	<a href="#">View WB on EPA Water Map</a>

35	IE_WE_35C010500	CLOONEEN (SLIGO)_020	River	Sligo County Council	SAC;	Poor	Moderate	Moderate	Good	2022-2027	At risk	Sediment, Morphological, Nutrients	HYMO, Ag	Owenmore Templehouse lake	LAWPRO, Restoration	<a href="#">View WB Page</a>	<a href="#">View WB on EPA Water Map</a>
35	IE_WE_35C010600	CLOONEEN (SLIGO)_030	River	Sligo County Council		Good	Good	Good	High	2022-2027	At risk	Hydrological, Morphological	HYMO	Owenmore Templehouse lake	LAWPRO, Restoration	<a href="#">View WB Page</a>	<a href="#">View WB on EPA Water Map</a>
35	IE_WE_35C031000	CASHEL STREAM (BONET)_010	River	Leitrim County Council	SAC;	Good	Good	Good	Good	2021 or earlier	Not at risk					<a href="#">View WB Page</a>	<a href="#">View WB on EPA Water Map</a>
35	IE_WE_35C660850	CARROWNRUSH_010	River	Sligo County Council		Unassigned	Good	Good	Good	2021 or earlier	Review					<a href="#">View WB Page</a>	<a href="#">View WB on EPA Water Map</a>
35	IE_WE_35C940920	CARTONKILLERDOO_010	River	Sligo County Council	SAC;	Unassigned	Good	Poor	Good	2022-2027	At risk	Nutrients, Organic	Ag, UWW			<a href="#">View WB Page</a>	<a href="#">View WB on EPA Water Map</a>
35	IE_WE_35C980970	Cregg (Sligo)_010	River	Sligo County Council	SAC; SPA;	Unassigned	Moderate	Good	Good	2021 or earlier	Review					<a href="#">View WB Page</a>	<a href="#">View WB on EPA Water Map</a>
35	IE_WE_35D010100	DIFFREEN_010	River	Leitrim County Council	SAC;	High	Good	High	Good	2021 or earlier	Not at risk					<a href="#">View WB Page</a>	<a href="#">View WB on EPA Water Map</a>
35	IE_WE_35D021400	DOUGLAS (SLIGO)_010	River	Sligo County Council	SAC;	Moderate	Poor	Poor	Good	2022-2027	At risk	Sediment, Nutrients, Organic	For, UR, Ag	Douglas (Sligo)	Sligo County Council, Restoration	<a href="#">View WB Page</a>	<a href="#">View WB on EPA Water Map</a>
35	IE_WE_35D040250	DRUMCLIFF_010	River	Leitrim County Council	SAC;	Good	Good	Moderate	Good	2022-2027	At risk	ElevatedTemperature, UnknownImpactType	Unknown			<a href="#">View WB Page</a>	<a href="#">View WB on EPA Water Map</a>
35	IE_WE_35D040400	DRUMCLIFF_020	River	Sligo County Council	SAC; SPA;	Good	Good	Good	Good	2021 or earlier	Not at risk					<a href="#">View WB Page</a>	<a href="#">View WB on EPA Water Map</a>
35	IE_WE_35D060100	DUNNEILL_010	River	Sligo County Council	SAC;	Good	Good	Good	High	2022-2027	At risk	Morphological	HYMO			<a href="#">View WB Page</a>	<a href="#">View WB on EPA Water Map</a>
35	IE_WE_35D060200	DUNNEILL_020	River	Sligo County Council		Good	Good	Moderate	Good	2022-2027	At risk	UnknownImpactType	Unknown			<a href="#">View WB Page</a>	<a href="#">View WB on EPA Water Map</a>
35	IE_WE_35D090400	DOONBEAKIN_010	River	Sligo County Council	SAC;	Good	Good	Good	Good	2021 or earlier	Not at risk					<a href="#">View WB Page</a>	<a href="#">View WB on EPA Water Map</a>
35	IE_WE_35D100600	DOONFLIN_010	River	Sligo County Council		Good	Moderate	Moderate	Good	2022-2027	At risk	Sediment, Nutrients, Organic	Ag	Doonflin	LAWPRO, Restoration	<a href="#">View WB Page</a>	<a href="#">View WB on EPA Water Map</a>
35	IE_WE_35D110800	DRUMFIN_010	River	Sligo County Council	SAC;	Good	Good	Good	Good	2021 or earlier	Not at risk					<a href="#">View WB Page</a>	<a href="#">View WB on EPA Water Map</a>
35	IE_WE_35D120800	DOONOWNEY_010	River	Sligo County Council	SAC; SPA;	Unassigned	Good	Good	Good	2021 or earlier	Not at risk			Benbulbin GWS Castletown GWS	NFGWS, Protection	<a href="#">View WB Page</a>	<a href="#">View WB on EPA Water Map</a>
35	IE_WE_35D161000	DUNMORAN_010	River	Sligo County Council		Moderate	Good	Good	High	2022-2027	At risk	Hydrological, Nutrients	Ag, Unknown	Dunmoran	LAWPRO, Restoration	<a href="#">View WB Page</a>	<a href="#">View WB on EPA Water Map</a>
35	IE_WE_35D161400	DUNMORAN_020	River	Sligo County Council	SAC;	Good	Good	Good	Good	2021 or earlier	Not at risk					<a href="#">View WB Page</a>	<a href="#">View WB on EPA Water Map</a>
35	IE_WE_35E010010	EASKY_010	River	Sligo County Council	SAC;	Good	Good	Good	Good	2021 or earlier	Not at risk			Easky	LAWPRO, Restoration	<a href="#">View WB Page</a>	<a href="#">View WB on EPA Water Map</a>
35	IE_WE_35E010020	EASKY_020	River	Sligo County Council	SAC;	Good	Good	Good	Good	2021 or earlier	Not at risk			Easky	LAWPRO, Restoration	<a href="#">View WB Page</a>	<a href="#">View WB on EPA Water Map</a>
35	IE_WE_35E010100	EASKY_030	River	Sligo County Council	SAC;	High	High	High	High	2021 or earlier	Not at risk			Easky	LAWPRO, Restoration	<a href="#">View WB Page</a>	<a href="#">View WB on EPA Water Map</a>
35	IE_WE_35E010200	EASKY_040	River	Sligo County Council		High	Good	High	High	2021 or earlier	Review			Easky	LAWPRO, Restoration	<a href="#">View WB Page</a>	<a href="#">View WB on EPA Water Map</a>
35	IE_WE_35F010100	FINNED_010	River	Sligo County Council	SAC;	Good	Good	Good	High	2022-2027	At risk	Morphological, Nutrients, Organic	Ag, For, Peat			<a href="#">View WB Page</a>	<a href="#">View WB on EPA Water Map</a>
35	IE_WE_35F010300	FINNED_020	River	Sligo County Council		Good	Good	Good	Good	2021 or earlier	Not at risk					<a href="#">View WB Page</a>	<a href="#">View WB on EPA Water Map</a>
35	IE_WE_35G010200	GARAVOGUE_010	River	Sligo County Council	SAC; SPA;	Poor	Poor	Poor	Good	2022-2027	At risk	Morphological, Nutrients, Organic	UR, For	Lough Gill	LAWPRO, Restoration	<a href="#">View WB Page</a>	<a href="#">View WB on EPA Water Map</a>
35	IE_WE_35G030100	GOWLAN (SLIGO)_010	River	Sligo County Council	SAC;	Good	Good	Good	Good	2021 or earlier	Not at risk					<a href="#">View WB Page</a>	<a href="#">View WB on EPA Water Map</a>
35	IE_WE_35G040200	GRANGE (SLIGO)_010	River	Sligo County Council	DWPA; SAC;	Moderate	Moderate	Poor	Good	2022-2027	At risk	Hydrological, Organic	UR, Ab			<a href="#">View WB Page</a>	<a href="#">View WB on EPA Water Map</a>
35	IE_WE_35K021000	KILLORAN LOUGH STREAM_010	River	Sligo County Council		Good	Good	Moderate	Good	2022-2027	At risk	UnknownImpactType	Unknown			<a href="#">View WB Page</a>	<a href="#">View WB on EPA Water Map</a>
35	IE_WE_35K030600	KILLANUMMERY_010	River	Leitrim County Council	SAC;	Moderate	Poor	Good	Good	2021 or earlier	Not at risk					<a href="#">View WB Page</a>	<a href="#">View WB on EPA Water Map</a>
35	IE_WE_35K030900	KILLANUMMERY_020	River	Sligo County Council	SAC;	High	Good	Good	High	2022-2027	At risk	Morphological	HYMO			<a href="#">View WB Page</a>	<a href="#">View WB on EPA Water Map</a>
35	IE_WE_35K350910	KILRUSHEIGHTER_010	River	Sligo County Council		Unassigned	Good	Good	Good	2021 or earlier	Review					<a href="#">View WB Page</a>	<a href="#">View WB on EPA Water Map</a>
35	IE_WE_35K420630	KNAPPAGH (Sligo)_010	River	Sligo County Council	SAC; SPA;	Unassigned	Unassigned	Good	Good	2021 or earlier	Review					<a href="#">View WB Page</a>	<a href="#">View WB on EPA Water Map</a>
35	IE_WE_35K430740	KNOCKNAHUR_010	River	Sligo County Council	SAC; SPA;	Unassigned	High	Good	Good	2021 or earlier	Review					<a href="#">View WB Page</a>	<a href="#">View WB on EPA Water Map</a>
35	IE_WE_35K580820	KILSHALVY_010	River	Sligo County Council		Unassigned	Moderate	Good	Good	2021 or earlier	Review			Owenmore (Sligo)	LAWPRO, Restoration	<a href="#">View WB Page</a>	<a href="#">View WB on EPA Water Map</a>
35	IE_WE_35L010400	LUGDOON STREAM_010	River	Sligo County Council		Moderate	Moderate	Moderate	Good	2022-2027	At risk	Morphological, Nutrients	Ag	Lugdoon Stream	LAWPRO, Restoration	<a href="#">View WB Page</a>	<a href="#">View WB on EPA Water Map</a>
35	IE_WE_35L021100	LISKEAGH_010	River	Sligo County Council		Good	Good	High	High	2021 or earlier	Not at risk			Owenmore (Sligo)	LAWPRO, Restoration	<a href="#">View WB Page</a>	<a href="#">View WB on EPA Water Map</a>
35	IE_WE_35O010030	OWENBEG (COOLANEY)_010	River	Sligo County Council	SAC;	Good	Good	Moderate	Good	2022-2027	At risk	UnknownImpactType	Unknown			<a href="#">View WB Page</a>	<a href="#">View WB on EPA Water Map</a>
35	IE_WE_35O010070	OWENBEG (COOLANEY)_020	River	Sligo County Council	SAC;	Good	High	High	Good	2021 or earlier	Not at risk					<a href="#">View WB Page</a>	<a href="#">View WB on EPA Water Map</a>
35	IE_WE_35O010400	OWENBEG (COOLANEY)_030	River	Sligo County Council	SAC;	Good	Good	Good	Good	2021 or earlier	Not at risk					<a href="#">View WB Page</a>	<a href="#">View WB on EPA Water Map</a>
35	IE_WE_35O060020	OWENMORE (SLIGO)_010	River	Sligo County Council		Good	Good	Good	Good	2021 or earlier	Not at risk			Owenmore (Sligo)	LAWPRO, Restoration	<a href="#">View WB Page</a>	<a href="#">View WB on EPA Water Map</a>
35	IE_WE_35O060050	OWENMORE (SLIGO)_020	River	Sligo County Council		Moderate	Poor	Moderate	Good	2022-2027	At risk	Morphological, Nutrients	Ag, For, UR	Owenmore (Sligo)	LAWPRO, Restoration	<a href="#">View WB Page</a>	<a href="#">View WB on EPA Water Map</a>

35	IE_WE_350060200	OWENMORE (SLIGO)_030	River	Sligo County Council	SAC;	Good	Moderate	Poor	Good	2022-2027	At risk	Sediment, Morphological, Nutrients	HYMO, Ag	Owenmore (Sligo)	LAWPRO, Restoration	<a href="#">View WB Page</a>	<a href="#">View WB on EPA Water Map</a>
35	IE_WE_350060250	OWENMORE (SLIGO)_040	River	Sligo County Council		Good	Good	Moderate	Good	2022-2027	At risk	UnknownImpactType	Unknown	Owenmore (Sligo)	LAWPRO, Restoration	<a href="#">View WB Page</a>	<a href="#">View WB on EPA Water Map</a>
35	IE_WE_350060400	OWENMORE (SLIGO)_050	River	Sligo County Council		Good	Moderate	Moderate	Good	2022-2027	At risk	Nutrients	Ag	Owenmore Templehouse lake	LAWPRO, Restoration	<a href="#">View WB Page</a>	<a href="#">View WB on EPA Water Map</a>
35	IE_WE_350060500	OWENMORE (SLIGO)_060	River	Sligo County Council	SAC;	Moderate	Poor	Poor	Good	2022-2027	At risk	Morphological, Nutrients	IS, Ag	Owenmore Templehouse lake	LAWPRO, Restoration	<a href="#">View WB Page</a>	<a href="#">View WB on EPA Water Map</a>
35	IE_WE_350060610	OWENMORE (SLIGO)_070	River	Sligo County Council	SAC;	Good	High	High	Good	2021 or earlier	Not at risk					<a href="#">View WB Page</a>	<a href="#">View WB on EPA Water Map</a>
35	IE_WE_350060900	OWENMORE (SLIGO)_080	River	Sligo County Council	SAC;	Moderate	Moderate	Poor	Good	2022-2027	At risk	Organic	UWW			<a href="#">View WB Page</a>	<a href="#">View WB on EPA Water Map</a>
35	IE_WE_350080220	OWENMORE (MANORHAMILTON)_010	River	Leitrim County Council	SAC;	Good	Good	Good	Good	2021 or earlier	Not at risk					<a href="#">View WB Page</a>	<a href="#">View WB on EPA Water Map</a>
35	IE_WE_350080400	OWENMORE (MANORHAMILTON)_020	River	Leitrim County Council	SAC;	Good	Good	Good	Good	2021 or earlier	Not at risk					<a href="#">View WB Page</a>	<a href="#">View WB on EPA Water Map</a>
35	IE_WE_35S011100	SHANVAUS_010	River	Leitrim County Council	SAC;	Good	Good	Good	High	2022-2027	At risk	Morphological	HYMO	Shanvaus_Blue Dot	LAWPRO, Restoration	<a href="#">View WB Page</a>	<a href="#">View WB on EPA Water Map</a>
35	IE_WE_35U010100	UNSHIN_010	River	Sligo County Council	SAC; SPA;	Moderate	Good	Good	Good	2021 or earlier	Not at risk			Lough Arrow	LAWPRO, Restoration	<a href="#">View WB Page</a>	<a href="#">View WB on EPA Water Map</a>
35	IE_WE_35U010200	UNSHIN_020	River	Sligo County Council	SAC;	Good	Moderate	Moderate	Good	2022-2027	At risk	Nutrients	Unknown			<a href="#">View WB Page</a>	<a href="#">View WB on EPA Water Map</a>
35	IE_WE_35U010400	UNSHIN_030	River	Sligo County Council	SAC;	Good	Good	Good	Good	2021 or earlier	Not at risk					<a href="#">View WB Page</a>	<a href="#">View WB on EPA Water Map</a>
35	IE_WE_35U010500	UNSHIN_040	River	Sligo County Council	SAC;	Good	High	High	High	2021 or earlier	Not at risk					<a href="#">View WB Page</a>	<a href="#">View WB on EPA Water Map</a>
35	IE_WE_35U010600	UNSHIN_050	River	Sligo County Council	SAC;	Good	High	High	High	2021 or earlier	Not at risk					<a href="#">View WB Page</a>	<a href="#">View WB on EPA Water Map</a>
35	IE_WE_35W010300	WILLSBOROUGH STREAM_010	River	Sligo County Council	SPA;	Good	Good	Moderate	Good	2022-2027	At risk	UnknownImpactType	Unknown			<a href="#">View WB Page</a>	<a href="#">View WB on EPA Water Map</a>
35	IE_WE_440_0100	Easky Estuary	Transitional	Sligo County Council		Unassigned	High	Good	Good	2021 or earlier	Not at risk					<a href="#">View WB Page</a>	<a href="#">View WB on EPA Water Map</a>
35	IE_WE_460_0100	Portavaud West, Ballysadare Bay	Transitional	Sligo County Council		Unassigned	Unassigned	Moderate	Good	2022-2027	Review					<a href="#">View WB Page</a>	<a href="#">View WB on EPA Water Map</a>
35	IE_WE_460_0300	Ballysadare Estuary	Transitional	Sligo County Council	SAC; SPA;	Moderate	Moderate	Moderate	Good	2022-2027	At risk	Nutrients, Organic	Ag, UWW			<a href="#">View WB Page</a>	<a href="#">View WB on EPA Water Map</a>
35	IE_WE_460_0400	Tanrego Intake	Transitional	Sligo County Council	SAC; SPA;	Unassigned	Moderate	Unassigned	Good	Unknown	Review					<a href="#">View WB Page</a>	<a href="#">View WB on EPA Water Map</a>
35	IE_WE_470_0100	Garavoge Estuary	Transitional	Sligo County Council	SAC; SPA; SF;	Good	Moderate	Moderate	Good	2022-2027	Review					<a href="#">View WB Page</a>	<a href="#">View WB on EPA Water Map</a>
35	IE_WE_480_0100	Drumcliff Estuary	Transitional	Sligo County Council	SAC; SPA; SF;	Unassigned	High	Unassigned	Good	Unknown	Not at risk					<a href="#">View WB Page</a>	<a href="#">View WB on EPA Water Map</a>