

Cycle 3

**HA 34 Moy & Killaloe Bay Catchment Report,
May 2024**



Introduction

Water Quality Summary

High Status Objectives

Water Quality Changes

WFD Risk

Significant Pressures

Action

Summary Information

Introduction

This report provides an overview of the water quality in the Moy & Killala Bay Catchment and the pressures impacting on water quality. This report is based on data up to 2021. The latest water quality data, dashboards and maps throughout this report are available on catchments.ie and [EPA Water Map](https://epa.maps.ie).

The Moy & Killala Bay Catchment includes the area drained by the River Moy and all streams entering tidal water in Killala Bay between Benwee Head and Lenadoon Point, Co. Sligo. This drains a total area of 2,345km². The largest urban centre in the catchment is Castlebar. The other main urban centres are Ballina, Tubbercurry, Kiltimagh, Swinford, Foxford, Enniscrone and Crossmolina.

The Moy & Killala Bay Catchment is divided into 22 subcatchments with 115 river waterbodies, 19 lakes, two transitional, four coastal waterbodies and 37 groundwater bodies.

[View the Moy & Killala Bay Catchment on the EPA Water Map](https://epa.maps.ie)

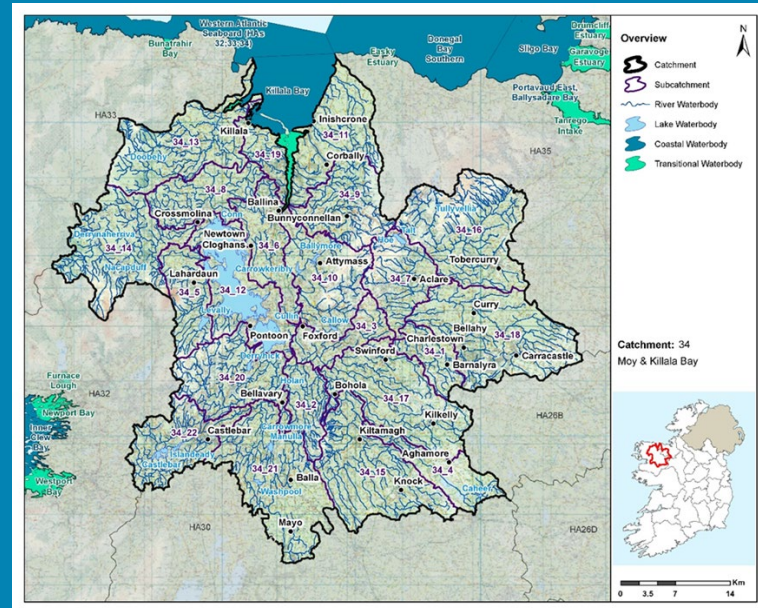
Previous Catchment Assessments

Previous catchment assessments, which provide additional historic context and information, are archived on catchments.ie:

- [Cycle 2 Catchment Assessments – published September 2018](#)
- [Cycle 3 Draft Catchment Assessments – published September 2021](#)

Online Dashboards

Links to online dashboards are provided in this report – these numbers may vary from those in this document as time progress and the online dashboards are updated based on the latest data and scientific assessments.



Overview of Subcatchments in the Moy & Killala Bay Catchment

Water Quality Summary

Introduction

Water Quality Summary

High Status Objectives

Water Quality Changes

WFD Risk

Significant Pressures

Action

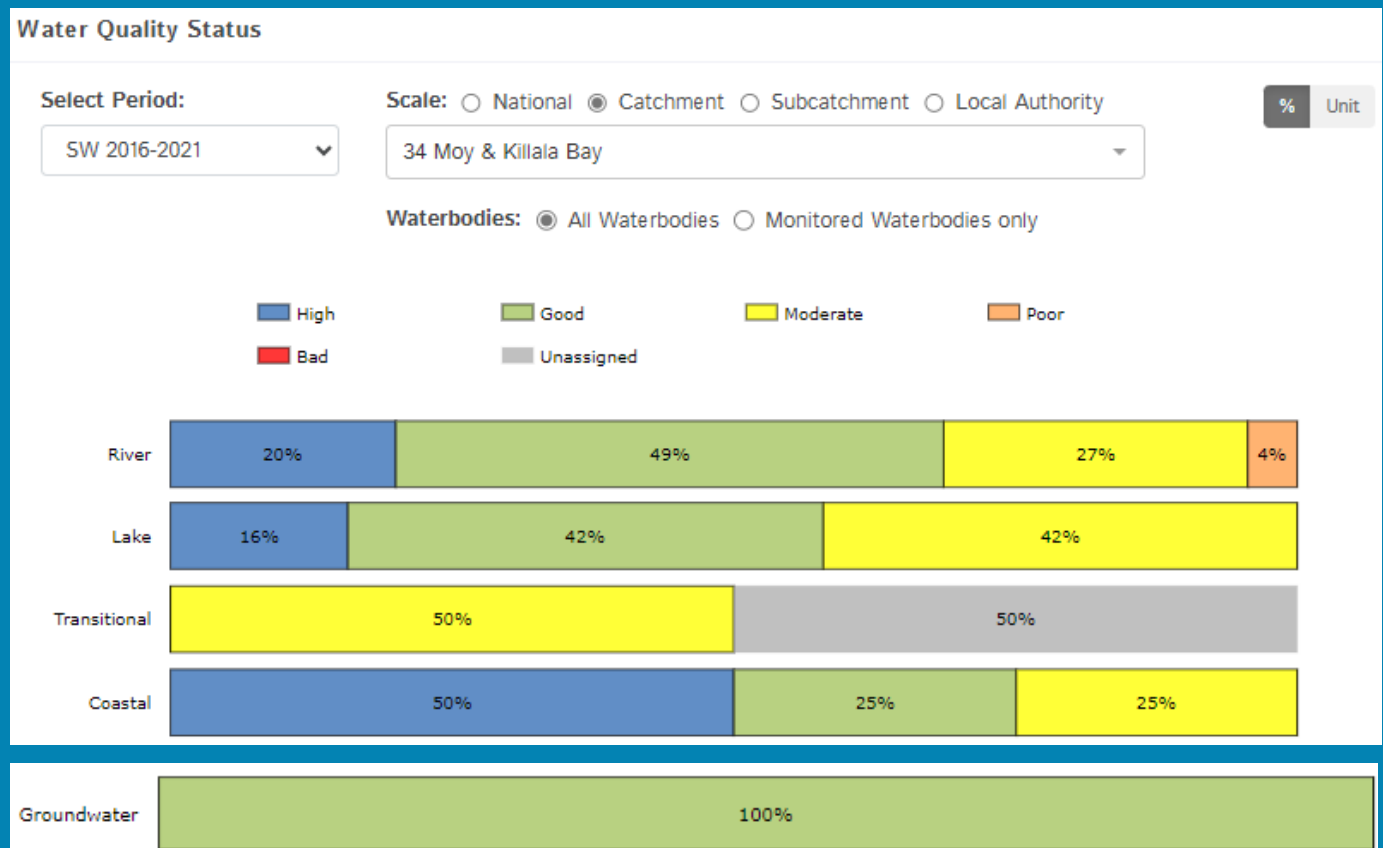
Summary Information

The dashboard below provides a breakdown of water quality status for surface and groundwater bodies in the Moy & Killala Bay Catchment.

A total of 66% of surface waterbodies were at Good or High Ecological Status in the 2016-2021 monitoring period. One hundred percent of groundwater bodies were at Good status.

Go to EPA Water Maps for WFD Status

[EPA Water Map](#)



Water quality status 2016-2021 for the Moy & Killala Bay Catchment.

View Online Dashboard: <https://www.catchments.ie/data/#/dashboard/waterquality>

High Status Objective Waterbodies

Introduction

High status waters are prioritised for protection and action.

There are 28 waterbodies with a **High Ecological Status Objective** (HSO) in the Moy & Killala Bay Catchment, with 15 currently not meeting their environmental objective of High.

Water Quality Summary

Grants for septic tank upgrades may be available in high status objective catchment areas - you can learn more and check your Eircode for eligibility here: <https://www.gov.ie/en/publication/6cc1e-domestic-waste-water-treatment-systems-septic-tanks>

[View HSO river waterbodies in this catchment.](#)

See *Status and Risk / High Status Objective* for other waterbody types.

High Status Objectives

Water Quality Changes

WFD Risk

Significant Pressures

Action

Summary Information

Water Quality Status - High Status Objective Waterbodies

Select Type:

All Surface Waters

Scale: Catchment Local Authority

34 Moy & Killala Bay

	SW 2007-2009	SW 2010-2012	SW 2010-2015	SW 2013-2018	SW 2016-2021
BELLANAMEAN_010 (River)	High	High	Good	High	Good
CALLOW LOUGHS STREAM_010 (River)	High	High	High	High	High
CLOONAGHMORE_010 (River)	High	Good	High	Good	High
CLOONAGHMORE_030 (River)	High	Good	High	High	High
CLOONLAVIS_010 (River)	High	High	Moderate	Good	Good
CLYDAGH (CASTLEBAR)_020 (River)	High	Good	High	Good	Good
CRUMLIN (LOUGH CULLIN)_010 (River)	High	High	Good	Good	High
DEEL (CROSSMOLINA)_050 (River)	Good	Good	High	High	Good
EIGNAGH_010 (River)	High	High	High	High	High
EIGNAGH_020 (River)	Unassigned	High	High	Good	Good

Introduction

Water Quality
Summary

High Status
Objectives

Water Quality
Changes

WFD Risk

Significant
Pressures

Action

Summary
Information

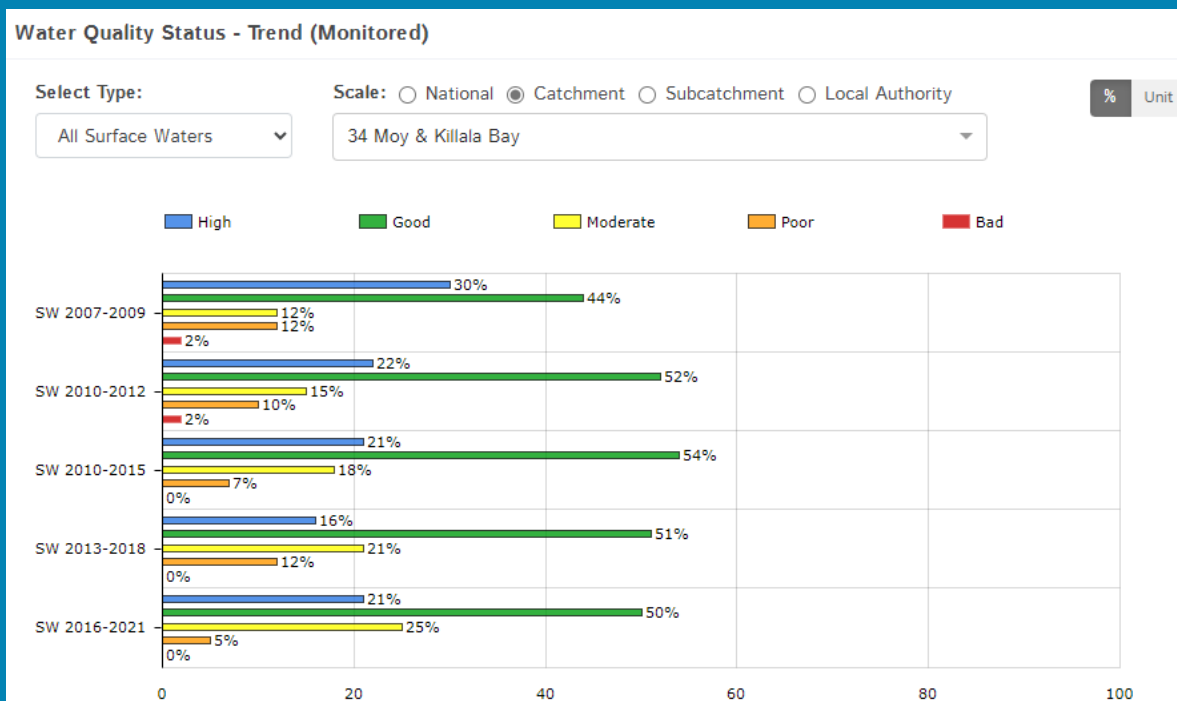
	SW 2007-2009	SW 2010-2012	SW 2010-2015	SW 2013-2018	SW 2016-2021
EIGNAGH_030 (River)	High	High	High	Good	Good
GLENREE_010 (River)	High	High	Good	High	High
GLENREE_020 (River)	High	High	High	Good	Good
GWEESTION_020 (River)	Good	High	High	High	High
LENYVEE_010 (River)	High	High	High	High	High
LOUGHANABOLL_010 (River)	Unassigned	High	Good	High	High
MOY_040 (River)	High	High	High	Moderate	Moderate
OWENAHER_010 (River)	Unassigned	Good	High	High	High
OWENGARVE (SLIGO)_010 (River)	High	High	Good	Good	Good
OWENGARVE (SLIGO)_020 (River)	High	High	High	Good	Good
OWENGARVE (SLIGO)_030 (River)	High	High	High	High	High
POLLAGH_010 (River)	High	High	High	High	Good
POLLAGH_020 (River)	Unassigned	High	High	High	Good
Talt (Lake)	High	Good	Good	Good	Good
TRIMOGE_030 (River)	Good	High	High	High	Good
Washpool (Lake)	Good	High	Good	Good	Good
YELLOW (FOXFORD)_010 (River)	High	High	High	High	High
YELLOW (FOXFORD)_020 (River)	High	High	High	High	High

Water quality status for High Ecological Status Objective waterbodies.

View Online Dashboard: <https://www.catchments.ie/data/#/dashboard/waterquality>

Water Quality Changes

Below illustrates the changes in ecological status in monitored surface waterbodies over the last five monitoring cycles in the Moy & Killala Bay Catchment. Nationally while there have been improvements in some waterbodies, these have been offset by declines elsewhere.



Ecological status trends for monitored surface waterbodies over the last five monitoring cycles in the Moy & Killala Catchment.

View online dashboard: <https://www.catchments.ie/data/#/dashboard/waterquality>

A total of 116 (66%) waterbodies are currently meeting their environmental objective of Good or High Ecological Status.

	Total	Achieving Environmental Objectives (2016-2021)	High Status Environmental Objectives Waterbodies	Achieving High Status Environmental Objectives (2016-2021)
Rivers	115	67 (58%)	26	13 (50%)
Canals	-	-	-	-
Lakes	19	9 (47%)	2	0 (0%)
Transitional	2	0 (0%)	0	0 (0%)
Coastal	4	3 (75%)	0	0 (0%)
Groundwater	37	37 (100%)	0	0 (0%)

Introduction

Water Quality Summary

High Status Objectives

Water Quality Changes

WFD Risk

Significant Pressures

Action

Summary Information

WFD Risk

Introduction

Water Quality Summary

High Status Objectives

Water Quality Changes

WFD Risk

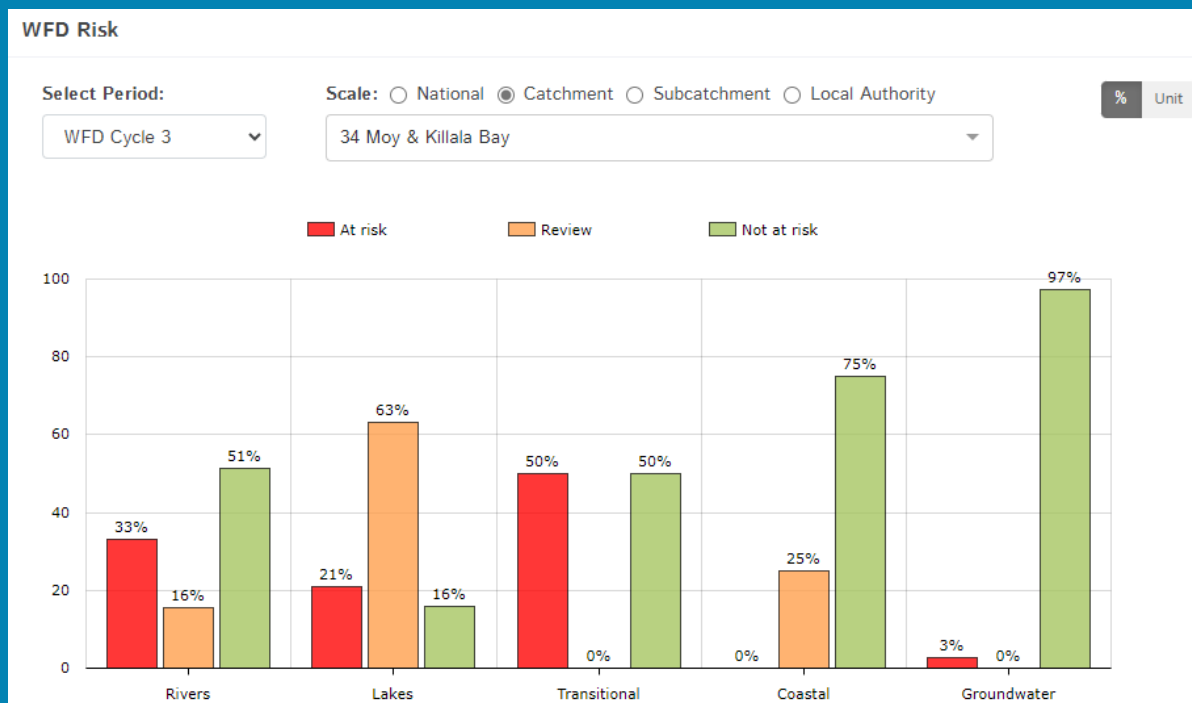
Significant Pressures

Action

Summary Information

A total of 44 (25%) waterbodies are *At Risk* of not meeting their environmental objective in the Moy & Killala Bay Catchment, while 31 (17%) are under *Review* and 102 (58%) are *Not At Risk*.

Go to [EPA Water Map](#) to see *WFD Risk for this catchment*



WFD Risk for the Moy & Killala Bay Catchment based on 2016-2021 data.

View Online Dashboard: <https://www.catchments.ie/data/#/dashboard/waterquality>

There are currently no heavily modified water bodies (HMWBs) in the Moy & Killala Bay catchment.

There are no artificial waterbodies in the Moy & Killala Bay Catchment.

The [EPA's characterisation outcome report](#) has more information on WFD Risk

Click [here](#) for more information on significant pressures

Introduction

Water Quality Summary

High Status Objectives

Water Quality Changes

WFD Risk

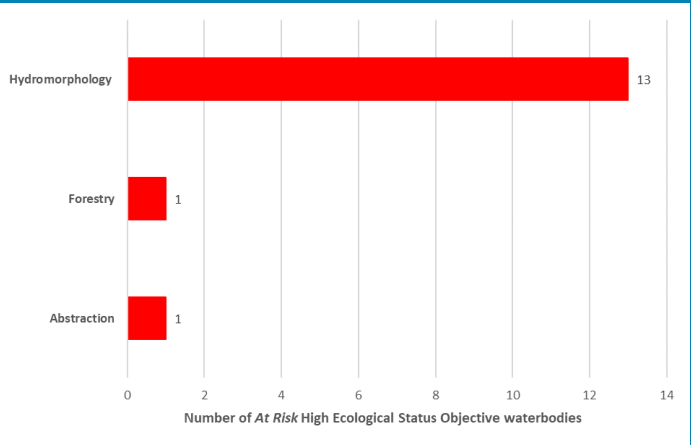
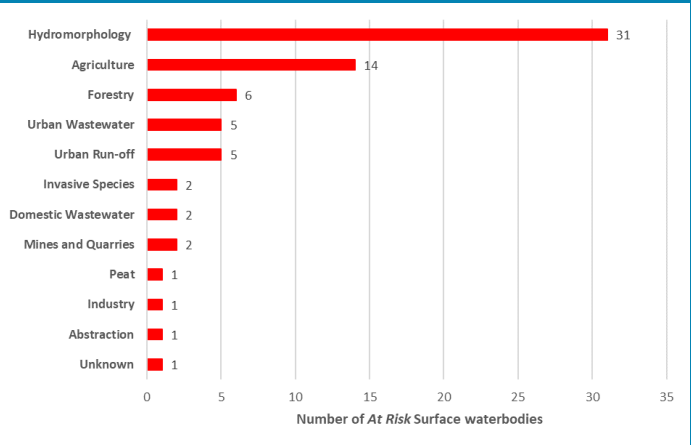
Significant Pressures

Action

Summary Information

Significant Pressures driving risk

Significant pressure types impacting the 43 *At Risk* surface waterbodies and one groundwater body are broken down in the figures below, including significant pressure information for the 15 *At Risk* High Ecological Status Objective waterbodies.



The issues driven by these pressures are mainly altered morphological condition (habitat), nutrient pollution and sediment impacts for surface water, and chemical quality diminution for surface water and nutrient pollution for groundwaters. For more information, see <https://www.catchments.ie/data/#/dashboard/pressure?k=i351zs>.

Go to the Summary Information section to get significant pressure and issue data for At Risk waterbodies within the Moy & Killala Bay Catchment.

Introduction

Water Quality Summary

High Status Objectives

Water Quality Changes

WFD Risk

Significant Pressures

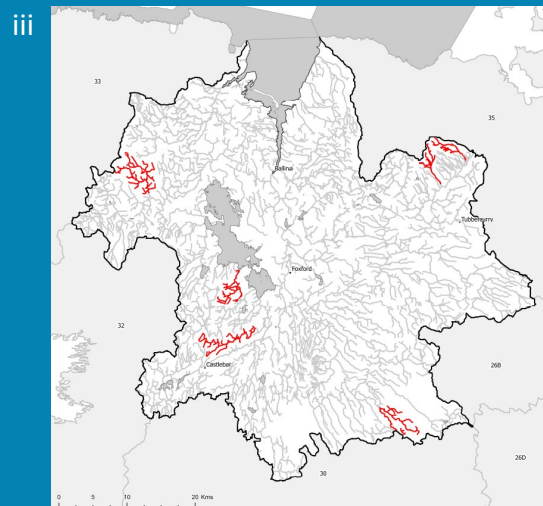
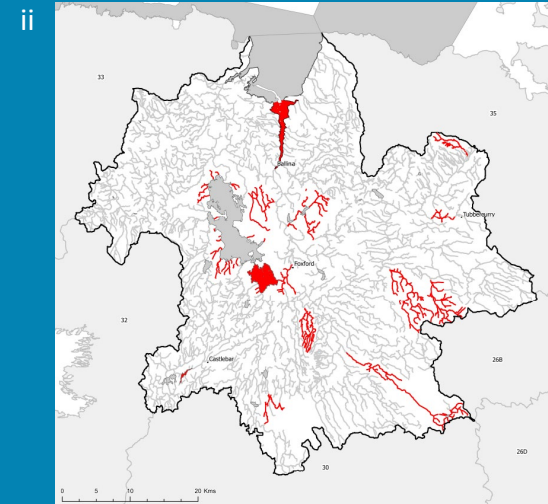
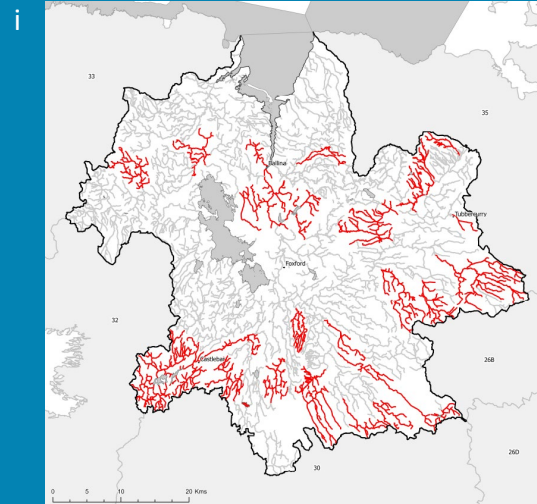
Action

Summary Information

Significant Pressures

Hydromorphological pressures is the top significant pressure impacting 70% of the 44 *At Risk* waterbodies within the Moy & Killala Bay Catchment, followed by 34% impacted by agriculture and 14% by forestry.

River Waterbody
Significant Pressure in Waterbody *At Risk*
Other Waterbodies
Lake, Coastal and Transitional Waterbody
Significant Pressure in Waterbody *At Risk*
Other Waterbodies



The catchments.ie dashboards will show all significant pressures identified for this catchment.

www.catchments.ie/data/#/dashboard/pressure

Go to the [EPA Water Maps](#) for the locations of all significant pressure types identified for this catchment

Locations of At Risk surface waterbodies impacted by i) Hydromorphological Pressures, ii) Agriculture and iii) Forestry.

Introduction

Water Quality
Summary

High Status
Objectives

Water Quality
Changes

WFD Risk

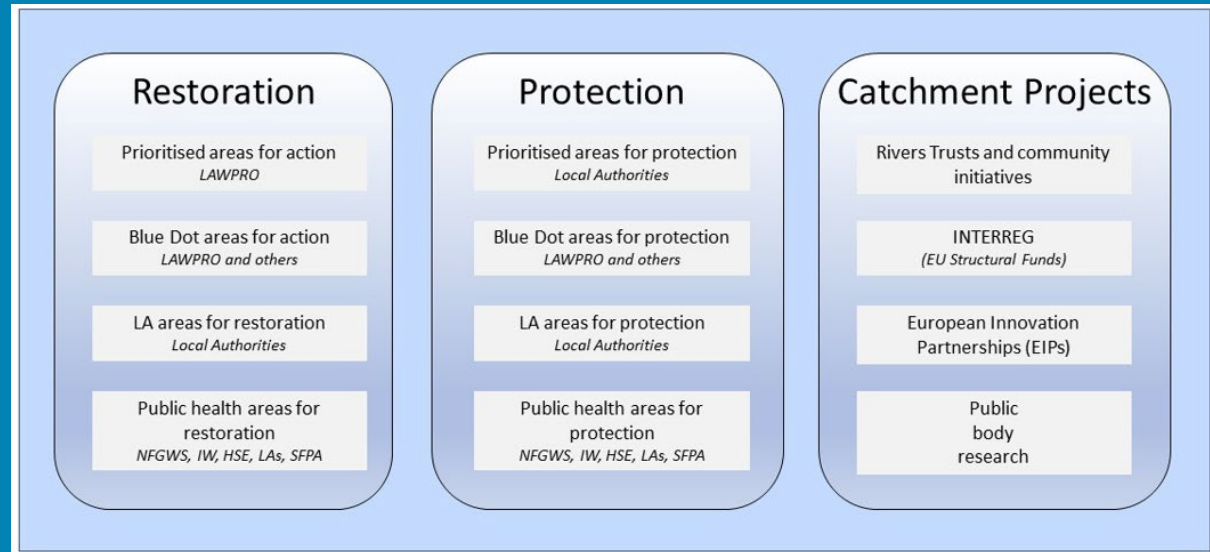
Significant
Pressures

Action

Summary
Information

Priority Areas for Action

A number of waterbodies have been prioritised through the selection of Areas for Action. There were eight Priority Areas for Action identified for the second river basin management planning cycle in the Moy & Killala Bay Catchment. This has increased to a total of 15 Areas for Restoration, four Areas for Protection and one Catchment Project for the third cycle. ***Go to the summary information section to get Area for Action information for waterbodies within the Moy & Killala Bay Catchment.***



Types of Areas for Action under the third cycle River Basin Management Plan

- View the current progress of Areas for Action and Summary Reports completed by LAWPRO, on [catchments.ie](https://www.catchments.ie) and the EPA Water Map:
 - <https://www.catchments.ie/data/#/areaforaction>
 - https://gis.epa.ie/EPAMaps/default?eastings=?&northings=?&lid=EPA:WFD_AreasForAction
- LAWPRO have also published detailed desktop studies on Prioritised Areas for Action (PAAs) which are available their website: <https://lawaters.ie/desktop-studies/>
- Information on Areas for Action for the second cycle is available in Cycle 2 Catchment Assessments which have been archived on [catchments.ie](https://www.catchments.ie/download/cycle-2-catchment-assessments-published-september-2018/): <https://www.catchments.ie/download/cycle-2-catchment-assessments-published-september-2018/>

Summary information for all waterbodies in the Moy & Killala Bay Catchment

The next page provides a table with a breakdown of key information for all waterbodies in this catchment. The key is provided below. Additional information for each waterbody is available on <https://www.catchments.ie/data>, including a breakdown of status, a monitoring schedule for monitored waterbodies and downloadable chemistry results, where available.

<p>Protected Area categories</p>	<p>BW: Bathing Water DW: Drinking Water Fish: Salmonid Waters NSA: Nutrient Sensitive Areas SAC: Special Area of Conservation, Natura 2000 (water dependent habitats and species) SF: Shellfish Area SPA: Special Area of Protection, Natura 2000 (water dependent habitat and species)</p>
<p>Significant pressure* types categories</p> <p><i>* For At Risk waterbodies only</i></p>	<p>Ab: Abstractions Ag: Agriculture Aq: Aquaculture At: Atmospheric DWW: Domestic Wastewater For: Forestry HPS: Historically polluted sites HYMO: Hydromorphology Ind: Industry IS: Invasive Species M+Q: Mines and Quarries Peat: Peat Drainage and Extraction UR: Urban Run-Off UWW: Urban Wastewater Was: Waste WT: Water Treatment</p>

Introduction

Water Quality Summary

High Status Objectives

Water Quality Changes

WFD Risk

Significant Pressures

Action

Summary Information

Catchment Code	Waterbody (WB) Code	WB Name	WB Type	Local Authority	Protected Area	Status 10-15	Status 13-18	Status 16-21	Environmental Objective	Environmental Objective Date	WFD Risk 16-21	Significant Issue(s)	Significant Pressure(s)	Area for Action (AFA)	AFA (lead, type)	Link to WB page on catchments.ie	Link to WB on EPA Water Map
31, 32, 33, 34, 35	IE_WE_250_0000	Western Atlantic Seaboard (HAS 32;33;34)	Coastal	Mayo County Council	BW; SAC; SPA; SF;	Unassigned	High	High	Good	2021 or earlier	Not at risk					View WB Page	View WB on EPA Water Map
33, 34	IE_WE_420_0000	Killala Bay	Coastal	Mayo County Council	BW; SAC; SPA; SF;	Good	Good	Good	Good	2021 or earlier	Not at risk			Killala Bay	LAWPRO, Restoration	View WB Page	View WB on EPA Water Map
34	IE_WE_420_0200	Cartoon Lough, Killala Bay	Coastal	Mayo County Council		Unassigned	Unassigned	Moderate	Good	2022-2027	Review					View WB Page	View WB on EPA Water Map
34, 35	IE_WE_430_0000	Donegal Bay Southern	Coastal	Sligo County Council	BW; SAC; SPA;	Unassigned	High	High	Good	2021 or earlier	Not at risk					View WB Page	View WB on EPA Water Map
26A, 26B, 26C, 26D, 26E, 34, 36	IE_SH_G_048	Carrick on Shannon	Groundwater	Roscommon County Council	DWPA; SAC	Good	Good	Good	Good	2021 or earlier	Not at risk					View WB Page	View WB on EPA Water Map
26A, 26B, 26C, 34, 35, 36	IE_SH_G_073	Curlew Mountains	Groundwater	Sligo County Council	DWPA; SAC	Good	Good	Good	Good	2021 or earlier	Not at risk					View WB Page	View WB on EPA Water Map
26B, 26D, 30, 34	IE_SH_G_224	Suck North	Groundwater	Roscommon County Council	DWPA; SAC	Good	Good	Good	Good	2021 or earlier	Not at risk					View WB Page	View WB on EPA Water Map
30, 31, 32, 34	IE_WE_G_0017	Clifden Castlebar	Groundwater	Mayo County Council	DWPA; SAC	Good	Good	Good	Good	2021 or earlier	Not at risk					View WB Page	View WB on EPA Water Map
30, 34	IE_WE_G_0019	Cong-Robe	Groundwater	Mayo County Council	DWPA; SAC	Good	Good	Good	Good	2021 or earlier	At risk	ChemicalQualityDiminution ForSW, Nutrients	Unknown, Ag			View WB Page	View WB on EPA Water Map
26D, 29, 30, 34	IE_WE_G_0020	Clare-Corrib	Groundwater	Galway County Council	DWPA; SAC	Good	Good	Good	Good	2021 or earlier	Not at risk					View WB Page	View WB on EPA Water Map
30, 32, 34	IE_WE_G_0021	Aghagower	Groundwater	Mayo County Council	DWPA	Good	Good	Good	Good	2021 or earlier	Not at risk					View WB Page	View WB on EPA Water Map
30, 32, 34	IE_WE_G_0022	Ballyhean	Groundwater	Mayo County Council	DWPA; SAC	Good	Good	Good	Good	2021 or earlier	Not at risk					View WB Page	View WB on EPA Water Map
32, 34	IE_WE_G_0024	Beltra Lough South	Groundwater	Mayo County Council	DWPA; SAC	Good	Good	Good	Good	2021 or earlier	Not at risk					View WB Page	View WB on EPA Water Map
32, 34	IE_WE_G_0025	Beltra Lough North	Groundwater	Mayo County Council	DWPA; SAC	Good	Good	Good	Good	2021 or earlier	Not at risk					View WB Page	View WB on EPA Water Map
32, 33, 34	IE_WE_G_0027	Malranny	Groundwater	Mayo County Council	DWPA; SAC	Good	Good	Good	Good	2021 or earlier	Not at risk					View WB Page	View WB on EPA Water Map
26A, 26B, 34, 35	IE_WE_G_0028	Gorteen	Groundwater	Sligo County Council	DWPA; SAC	Good	Good	Good	Good	2021 or earlier	Not at risk					View WB Page	View WB on EPA Water Map
34, 35	IE_WE_G_0029	Tobercurry	Groundwater	Sligo County Council	DWPA	Good	Good	Good	Good	2021 or earlier	Not at risk					View WB Page	View WB on EPA Water Map
32, 33, 34	IE_WE_G_0030	Laherdaun	Groundwater	Mayo County Council	DWPA; SAC	Good	Good	Good	Good	2021 or earlier	Not at risk					View WB Page	View WB on EPA Water Map
33, 34	IE_WE_G_0031	Deel	Groundwater	Mayo County Council	DWPA; SAC	Good	Good	Good	Good	2021 or earlier	Not at risk					View WB Page	View WB on EPA Water Map
26B, 34, 35	IE_WE_G_0032	Kilkelly Charlestown	Groundwater	Mayo County Council	DWPA; SAC	Good	Good	Good	Good	2021 or earlier	Not at risk					View WB Page	View WB on EPA Water Map
26B, 26D, 30, 32, 34, 35	IE_WE_G_0033	Swinford	Groundwater	Mayo County Council	DWPA; SAC	Good	Good	Good	Good	2021 or earlier	Not at risk					View WB Page	View WB on EPA Water Map
32, 34, 35	IE_WE_G_0034	Foxford	Groundwater	Mayo County Council	DWPA; SAC	Good	Good	Good	Good	2021 or earlier	Not at risk					View WB Page	View WB on EPA Water Map
34	IE_WE_G_0035	Ballina	Groundwater	Mayo County Council	DWPA; SAC	Good	Good	Good	Good	2021 or earlier	Not at risk					View WB Page	View WB on EPA Water Map
26A, 34, 35	IE_WE_G_0037	Ballymote	Groundwater	Sligo County Council	DWPA; SAC	Good	Good	Good	Good	2021 or earlier	Not at risk					View WB Page	View WB on EPA Water Map
34, 35	IE_WE_G_0038	Lavagh-Ballintougher	Groundwater	Sligo County Council	DWPA; SAC	Good	Good	Good	Good	2021 or earlier	Not at risk					View WB Page	View WB on EPA Water Map
34, 35	IE_WE_G_0039	Ballygawley	Groundwater	Sligo County Council	DWPA; SAC	Good	Good	Good	Good	2021 or earlier	Not at risk					View WB Page	View WB on EPA Water Map
33, 34	IE_WE_G_0041	Bellacorick-Killala	Groundwater	Mayo County Council	DWPA; SAC	Good	Good	Good	Good	2021 or earlier	Not at risk					View WB Page	View WB on EPA Water Map
33, 34	IE_WE_G_0046	Killala North	Groundwater	Mayo County Council	DWPA; SAC	Good	Good	Good	Good	2021 or earlier	Not at risk					View WB Page	View WB on EPA Water Map
33, 34	IE_WE_G_0047	Killala South	Groundwater	Mayo County Council	DWPA; SAC	Good	Good	Good	Good	2021 or earlier	Not at risk					View WB Page	View WB on EPA Water Map
34, 35	IE_WE_G_0048	Collooney	Groundwater	Sligo County Council	DWPA; SAC	Good	Good	Good	Good	2021 or earlier	Not at risk					View WB Page	View WB on EPA Water Map
34, 35	IE_WE_G_0049	Easky West	Groundwater	Sligo County Council	DWPA; SAC	Good	Good	Good	Good	2021 or earlier	Not at risk					View WB Page	View WB on EPA Water Map
34, 35	IE_WE_G_0050	Easky East	Groundwater	Sligo County Council	DWPA; SAC	Good	Good	Good	Good	2021 or earlier	Not at risk					View WB Page	View WB on EPA Water Map
32, 33, 34	IE_WE_G_0057	Belmullet	Groundwater	Mayo County Council	DWPA; SAC	Good	Good	Good	Good	2021 or earlier	Not at risk					View WB Page	View WB on EPA Water Map
26B, 30, 34	IE_WE_G_0063	Corrib Gravels	Groundwater	Mayo County Council	DWPA; SAC	Good	Good	Good	Good	2021 or earlier	Not at risk					View WB Page	View WB on EPA Water Map
34, 35	IE_WE_G_0104	GWDTE-Turloughmore Sligo (SAC000637)	Groundwater	Sligo County Council	DWPA; SAC (GWDTE)	Good	Good	Good	Good	2021 or earlier	Not at risk					View WB Page	View WB on EPA Water Map
34	IE_WE_G_0107	Crossmolina Gravels	Groundwater	Mayo County Council	DWPA; SAC	Good	Good	Good	Good	2021 or earlier	Not at risk					View WB Page	View WB on EPA Water Map
34	IE_WE_G_0108	Swinford Gravels	Groundwater	Mayo County Council	DWPA; SAC	Good	Good	Good	Good	2021 or earlier	Not at risk					View WB Page	View WB on EPA Water Map
26B, 34	IE_WE_G_0112	Gweeston-Moy Gravels Group 1	Groundwater	Mayo County Council	DWPA; SAC	Good	Good	Good	Good	2021 or earlier	Not at risk					View WB Page	View WB on EPA Water Map

34	IE_WE_G_0113	Ballina Gravels Group 1	Groundwater	Mayo County Council	DWPA; SAC	Good	Good	Good	Good	2021 or earlier	Not at risk					View WB Page	View WB on EPA Water Map
34	IE_WE_G_0115	Gweestion-Moy Gravels Group 2	Groundwater	Mayo County Council	DWPA; SAC	Good	Good	Good	Good	2021 or earlier	Not at risk					View WB Page	View WB on EPA Water Map
34	IE_WE_G_0116	Ballina Gravels Group 2	Groundwater	Mayo County Council	DWPA; SAC	Good	Good	Good	Good	2021 or earlier	Not at risk					View WB Page	View WB on EPA Water Map
34	IE_WE_34_251	Derrynaherriva	Lake	Mayo County Council	SAC;	Unassigned	Unassigned	Moderate	Good	2022-2027	Review			Upper and Lower Deel (Crossmolina)	LAWPRO, Restoration	View WB Page	View WB on EPA Water Map
34	IE_WE_34_297	Tullyvella	Lake	Sligo County Council	SAC;	Unassigned	High	High	Good	2021 or earlier	Not at risk					View WB Page	View WB on EPA Water Map
34	IE_WE_34_304	Carrowmore Manulla	Lake	Mayo County Council	DWPA;	Unassigned	Unassigned	Good	Good	2021 or earlier	Review			Castlebar Lannagh	LAWPRO, Restoration	View WB Page	View WB on EPA Water Map
34	IE_WE_34_315	Caheer	Lake	Mayo County Council		Unassigned	Unassigned	Good	Good	2021 or earlier	Review			Cloonlavis Gloré	LAWPRO, Restoration	View WB Page	View WB on EPA Water Map
34	IE_WE_34_355	Doobehy	Lake	Mayo County Council	SAC;	Unassigned	Unassigned	Moderate	Good	2022-2027	Review					View WB Page	View WB on EPA Water Map
34	IE_WE_34_368	Levally	Lake	Mayo County Council	SAC;	Moderate	Good	Good	Good	2021 or earlier	Not at risk			Lough Conn and Lough Cullin	LAWPRO, Restoration	View WB Page	View WB on EPA Water Map
34	IE_WE_34_376	Islandeady	Lake	Mayo County Council	Fish;	Unassigned	Good	Moderate	Good	2022-2027	Review			Castlebar Lannagh	LAWPRO, Restoration	View WB Page	View WB on EPA Water Map
34	IE_WE_34_386	Derryhick	Lake	Mayo County Council	SAC;	Unassigned	Good	Good	Good	2021 or earlier	Review			Lough Conn and Lough Cullin	LAWPRO, Restoration	View WB Page	View WB on EPA Water Map
34	IE_WE_34_391	Ballymore	Lake	Mayo County Council		Unassigned	Good	Moderate	Good	2022-2027	Review			Moy Estuary	LAWPRO, Restoration	View WB Page	View WB on EPA Water Map
34	IE_WE_34_393	Callow	Lake	Mayo County Council	DWPA;	Unassigned	Good	Good	Good	2021 or earlier	Review			Callow GWS	NFGWS, Protection	View WB Page	View WB on EPA Water Map
34	IE_WE_34_402	Washpool	Lake	Mayo County Council		Good	Good	Good	High	2022-2027	At risk	Hydrological	HYMO	Castlebar Lannagh	LAWPRO, Restoration	View WB Page	View WB on EPA Water Map
34	IE_WE_34_403	Castlebar	Lake	Mayo County Council	Fish;	Moderate	Moderate	Moderate	Good	2022-2027	At risk	Morphological, Nutrients, UnknownImpactType	DWTS, IS, Ag	Castlebar Lannagh	LAWPRO, Restoration	View WB Page	View WB on EPA Water Map
34	IE_WE_34_405	Talt	Lake	Sligo County Council	DWPA; SAC;	Good	Good	Good	High	2022-2027	At risk	Hydrological	Ab	Eignagh_Blue Dot	LAWPRO, Restoration	View WB Page	View WB on EPA Water Map
34	IE_WE_34_406a	Cullin	Lake	Mayo County Council	SAC; Fish; SPA; NSA;	Moderate	Moderate	Moderate	Good	2022-2027	At risk	Nutrients, UnknownImpactType	IS, Ag	Lough Conn and Lough Cullin	LAWPRO, Restoration	View WB Page	View WB on EPA Water Map
34	IE_WE_34_406b	Conn	Lake	Mayo County Council	DWPA; SAC; Fish; SPA;	Good	Moderate	Good	Good	2021 or earlier	Review					View WB Page	View WB on EPA Water Map
34	IE_WE_34_458	Holan	Lake	Mayo County Council	DWPA;	Unassigned	Unassigned	High	Good	2021 or earlier	Review					View WB Page	View WB on EPA Water Map
34	IE_WE_34_688	Nacapduff	Lake	Mayo County Council	SAC;	Unassigned	High	Moderate	Good	2022-2027	Review			Upper and Lower Deel (Crossmolina)	LAWPRO, Restoration	View WB Page	View WB on EPA Water Map
34	IE_WE_34_773	Hoe	Lake	Sligo County Council	SAC;	Unassigned	High	High	Good	2021 or earlier	Not at risk			Eignagh_Blue Dot	LAWPRO, Restoration	View WB Page	View WB on EPA Water Map
34	IE_WE_34_809	Carrowkeribly	Lake	Mayo County Council		Unassigned	Good	Moderate	Good	2022-2027	Review			Moy Estuary	LAWPRO, Restoration	View WB Page	View WB on EPA Water Map
34	IE_WE_34A010600	ADDERGOOLE_010	River	Mayo County Council	DWPA; SAC; SPA;	Moderate	Good	Good	Good	2021 or earlier	Not at risk			Lough Conn and Lough Cullin	LAWPRO, Restoration	View WB Page	View WB on EPA Water Map
34	IE_WE_34A120980	ATTIAPPLETON_010	River	Mayo County Council	SAC; SPA;	Unassigned	Poor	Moderate	Good	2022-2027	At risk	Sediment, Nutrients	For	Lough Conn and Lough Cullin	LAWPRO, Restoration	View WB Page	View WB on EPA Water Map
34	IE_WE_34A350930	ABBEYTOWN_010	River	Mayo County Council	SAC;	Unassigned	Moderate	Moderate	Good	2022-2027	Review			Upper and Lower Deel (Crossmolina)	LAWPRO, Restoration	View WB Page	View WB on EPA Water Map
34	IE_WE_34B020200	BAR DEELA_010	River	Mayo County Council	SAC;	Good	Poor	Good	Good	2021 or earlier	Not at risk			Upper and Lower Deel (Crossmolina)	LAWPRO, Restoration	View WB Page	View WB on EPA Water Map
34	IE_WE_34B040500	BELLANAMEAN_010	River	Sligo County Council	SAC;	Good	High	Good	High	2022-2027	At risk	Morphological	HYMO	Eignagh_Blue Dot	LAWPRO, Restoration	View WB Page	View WB on EPA Water Map
34	IE_WE_34B050150	BELLAWADDY_010	River	Sligo County Council		Good	Good	Good	Good	2021 or earlier	Not at risk					View WB Page	View WB on EPA Water Map
34	IE_WE_34B050300	BELLAWADDY_020	River	Sligo County Council	SAC; SPA;	Moderate	Good	Good	Good	2021 or earlier	Not at risk					View WB Page	View WB on EPA Water Map
34	IE_WE_34B060600	BREAGHWY_010	River	Mayo County Council	SAC;	Good	Good	Good	Good	2021 or earlier	Not at risk					View WB Page	View WB on EPA Water Map
34	IE_WE_34B070200	BRUSNA (NORTH MAYO)_010	River	Sligo County Council		Good	Good	High	Good	2021 or earlier	Not at risk			Glenree and Brusna_Blue Dot	LAWPRO, Restoration	View WB Page	View WB on EPA Water Map
34	IE_WE_34B070600	BRUSNA (NORTH MAYO)_020	River	Mayo County Council	SAC;	Good	Good	Good	Good	2021 or earlier	Not at risk			Glenree and Brusna_Blue Dot	LAWPRO, Restoration	View WB Page	View WB on EPA Water Map
34	IE_WE_34B080400	BEHY (NORTH MAYO)_010	River	Mayo County Council	SAC;	Good	Good	Moderate	Good	2022-2027	Review			Glenree and Brusna_Blue Dot	LAWPRO, Restoration	View WB Page	View WB on EPA Water Map
34	IE_WE_34B120180	BLACK (SLIGO)_010	River	Mayo County Council	SAC;	Moderate	Moderate	Good	Good	2021 or earlier	Not at risk			Owengarve Charlestown	LAWPRO, Restoration	View WB Page	View WB on EPA Water Map
34	IE_WE_34B180860	BALLAGHAMUCK_010	River	Mayo County Council	SAC;	Unassigned	Moderate	Moderate	Good	2022-2027	Review			Upper and Lower Deel (Crossmolina)	LAWPRO, Restoration	View WB Page	View WB on EPA Water Map
34	IE_WE_34B400840	BALLYMANAGH_010	River	Mayo County Council	SAC; SPA;	Unassigned	Good	Good	Good	2021 or earlier	Review			Lough Conn and Lough Cullin	LAWPRO, Restoration	View WB Page	View WB on EPA Water Map
34	IE_WE_34C010180	CASTLEBAR_010	River	Mayo County Council	Fish; NSA;	Moderate	Poor	Poor	Good	2022-2027	At risk	Morphological, Organic	HYMO, UR	Castlebar Lannagh	LAWPRO, Restoration	View WB Page	View WB on EPA Water Map
34	IE_WE_34C010300	CASTLEBAR_020	River	Mayo County Council	Fish; NSA;	Poor	Moderate	Moderate	Good	2022-2027	At risk	Sediment, Morphological, Nutrients, Organic	HYMO, UR	Castlebar Lannagh	LAWPRO, Restoration	View WB Page	View WB on EPA Water Map
34	IE_WE_34C010400	CASTLEBAR_030	River	Mayo County Council	SAC; Fish; NSA;	Good	Moderate	Moderate	Good	2022-2027	At risk	Morphological	HYMO	Castlebar Lannagh	LAWPRO, Restoration	View WB Page	View WB on EPA Water Map
34	IE_WE_34C010500	CASTLEBAR_040	River	Mayo County Council	SAC; Fish; SPA; NSA;	Good	Good	Good	Good	2021 or earlier	Not at risk			Lough Conn and Lough Cullin	LAWPRO, Restoration	View WB Page	View WB on EPA Water Map
34	IE_WE_34C020460	CASTLEHILL_010	River	Mayo County Council	SAC; SPA;	Unassigned	Good	High	Good	2021 or earlier	Review			Lough Conn and Lough Cullin	LAWPRO, Restoration	View WB Page	View WB on EPA Water Map

34	IE_WE_34C030030	CLOONAGHMORE_010	River	Mayo County Council	SAC;	High	Good	High	High	2021 or earlier	Not at risk				Cloonaghmore_Blue Dot	LAWPRO, Restoration	View WB Page	View WB on EPA Water Map
34	IE_WE_34C030100	CLOONAGHMORE_020	River	Mayo County Council	SAC;	Good	Good	Good	Good	2021 or earlier	Not at risk						View WB Page	View WB on EPA Water Map
34	IE_WE_34C030150	CLOONAGHMORE_030	River	Mayo County Council	SAC;	High	High	High	High	2021 or earlier	Not at risk						View WB Page	View WB on EPA Water Map
34	IE_WE_34C030200	CLOONAGHMORE_040	River	Mayo County Council		Good	Good	Good	Good	2021 or earlier	Not at risk						View WB Page	View WB on EPA Water Map
34	IE_WE_34C030270	CLOONAGHMORE_050	River	Mayo County Council		Good	Good	Good	Good	2021 or earlier	Not at risk						View WB Page	View WB on EPA Water Map
34	IE_WE_34C030300	CLOONAGHMORE_060	River	Mayo County Council	SPA;	Unassigned	Good	Good	Good	2021 or earlier	Not at risk						View WB Page	View WB on EPA Water Map
34	IE_WE_34C050100	CLYDAGH (CASTLEBAR)_010	River	Mayo County Council	SAC;	Good	Good	Good	Good	2021 or earlier	Not at risk				Lough Conn and Lough Cullin	LAWPRO, Restoration	View WB Page	View WB on EPA Water Map
34	IE_WE_34C050200	CLYDAGH (CASTLEBAR)_020	River	Mayo County Council	SAC;	High	Good	Good	High	2022-2027	At risk	Sediment, Nutrients	For		Lough Conn and Lough Cullin	LAWPRO, Restoration	View WB Page	View WB on EPA Water Map
34	IE_WE_34C060200	CORROY_010	River	Mayo County Council	Fish;	Unassigned	Poor	Moderate	Good	2022-2027	At risk	Sediment	Ag, HYMO		Moy Estuary	LAWPRO, Restoration	View WB Page	View WB on EPA Water Map
34	IE_WE_34C070600	CARROWKERIBLY LOUGH STREAM_010	River	Mayo County Council	SAC;	Good	Poor	Moderate	Good	2022-2027	At risk	Morphological, Nutrients	Ag, HYMO		Moy Estuary	LAWPRO, Restoration	View WB Page	View WB on EPA Water Map
34	IE_WE_34C080300	CALLOW LOUGHS STREAM_010	River	Mayo County Council	DWPA;	High	High	High	High	2021 or earlier	Not at risk				Callow GWS	NFGWS, Protection	View WB Page	View WB on EPA Water Map
34	IE_WE_34C090700	CARROWARD_010	River	Mayo County Council		Good	Moderate	Moderate	Good	2022-2027	At risk	Sediment, Morphological, Nutrients, Organic	Ag, HYMO, UWW		Strade Bohola	LAWPRO, Restoration	View WB Page	View WB on EPA Water Map
34	IE_WE_34C100300	CLOONLAVIS_010	River	Mayo County Council	SAC;	Moderate	Good	Good	High	2022-2027	At risk	Morphological	HYMO		Cloonlavis Glore	LAWPRO, Restoration	View WB Page	View WB on EPA Water Map
34	IE_WE_34C110300	CRUMLIN (LOUGH CULLIN)_010	River	Mayo County Council	SAC; SPA;	Good	Good	High	High	2021 or earlier	Not at risk				Lough Conn and Lough Cullin	LAWPRO, Restoration	View WB Page	View WB on EPA Water Map
34	IE_WE_34C120400	CORSALLAGH STREAM_010	River	Sligo County Council	SAC;	Unassigned	High	Good	Good	2021 or earlier	Not at risk						View WB Page	View WB on EPA Water Map
34	IE_WE_34C280100	CHARLESTOWN STREAM_010	River	Mayo County Council	SAC; Fish;	Poor	Moderate	Moderate	Good	2022-2027	At risk	Hydrological, Morphological, Nutrients	Ag, HYMO		Owengarve Charlestown	LAWPRO, Restoration	View WB Page	View WB on EPA Water Map
34	IE_WE_34C700920	CREEVY_010	River	Mayo County Council	SAC; SPA;	Unassigned	Moderate	Moderate	Good	2022-2027	Review				Lough Conn and Lough Cullin	LAWPRO, Restoration	View WB Page	View WB on EPA Water Map
34	IE_WE_34D010006	DEEL (CROSSMOLINA)_010	River	Mayo County Council	SAC; Fish;	Good	Moderate	Good	Good	2021 or earlier	Not at risk				Upper and Lower Deel (Crossmolina)	LAWPRO, Restoration	View WB Page	View WB on EPA Water Map
34	IE_WE_34D010010	DEEL (CROSSMOLINA)_020	River	Mayo County Council	SAC; Fish;	Good	Moderate	High	Good	2021 or earlier	Not at risk				Upper and Lower Deel (Crossmolina)	LAWPRO, Restoration	View WB Page	View WB on EPA Water Map
34	IE_WE_34D010025	DEEL (CROSSMOLINA)_030	River	Mayo County Council	SAC; Fish;	Good	Good	Good	Good	2021 or earlier	Not at risk				Upper and Lower Deel (Crossmolina)	LAWPRO, Restoration	View WB Page	View WB on EPA Water Map
34	IE_WE_34D010120	DEEL (CROSSMOLINA)_040	River	Mayo County Council	SAC; Fish;	Good	Good	Good	Good	2021 or earlier	Not at risk				Upper and Lower Deel (Crossmolina)	LAWPRO, Restoration	View WB Page	View WB on EPA Water Map
34	IE_WE_34D010300	DEEL (CROSSMOLINA)_050	River	Mayo County Council	SAC; Fish;	High	High	Good	High	2022-2027	At risk	Morphological	HYMO		Upper and Lower Deel (Crossmolina)	LAWPRO, Restoration	View WB Page	View WB on EPA Water Map
34	IE_WE_34D010400	DEEL (CROSSMOLINA)_060	River	Mayo County Council	SAC; Fish; SPA;	Moderate	Moderate	High	Good	2021 or earlier	Not at risk				Upper and Lower Deel (Crossmolina)	LAWPRO, Restoration	View WB Page	View WB on EPA Water Map
34	IE_WE_34D030800	DUVOWEN_010	River	Mayo County Council	SAC;	Good	Good	Good	Good	2021 or earlier	Not at risk						View WB Page	View WB on EPA Water Map
34	IE_WE_34D310990	DOOYEAGHNY_or_CLOONLOUGH AN_010	River	Sligo County Council	SAC; SPA;	Unassigned	Moderate	Good	Good	2021 or earlier	Review				Moy Estuary	LAWPRO, Restoration	View WB Page	View WB on EPA Water Map
34	IE_WE_34D360920	DRUMBAUN_010	River	Sligo County Council	SAC;	Unassigned	High	Good	Good	2021 or earlier	Not at risk				Owengarve Charlestown	LAWPRO, Restoration	View WB Page	View WB on EPA Water Map
34	IE_WE_34E010100	EIGNAGH_010	River	Sligo County Council	SAC;	High	High	High	High	2021 or earlier	Not at risk				Eignagh_Blue Dot	LAWPRO, Restoration	View WB Page	View WB on EPA Water Map
34	IE_WE_34E010200	EIGNAGH_020	River	Sligo County Council	SAC;	High	Good	Good	High	2022-2027	At risk	Morphological	HYMO		Eignagh_Blue Dot	LAWPRO, Restoration	View WB Page	View WB on EPA Water Map
34	IE_WE_34E010300	EIGNAGH_030	River	Sligo County Council	SAC;	High	Good	Good	High	2022-2027	At risk	Morphological	HYMO		Eignagh_Blue Dot	LAWPRO, Restoration	View WB Page	View WB on EPA Water Map
34	IE_WE_34G010020	GLENREE_010	River	Mayo County Council	SAC;	Good	High	High	High	2021 or earlier	Not at risk				Glenree and Brusna_Blue Dot	LAWPRO, Restoration	View WB Page	View WB on EPA Water Map
34	IE_WE_34G010060	GLENREE_020	River	Mayo County Council	SAC;	High	Good	Good	High	2022-2027	At risk	Morphological	HYMO		Glenree and Brusna_Blue Dot	LAWPRO, Restoration	View WB Page	View WB on EPA Water Map
34	IE_WE_34G010200	GLENREE_030	River	Mayo County Council	SAC;	Good	Good	Good	Good	2021 or earlier	Not at risk				Glenree and Brusna_Blue Dot	LAWPRO, Restoration	View WB Page	View WB on EPA Water Map
34	IE_WE_34G020010	GLORE (MAYO)_010	River	Mayo County Council	Fish;	Moderate	Moderate	Moderate	Good	2022-2027	At risk	Morphological, Chemical, Nutrients, UnknownImpactType	Ag, HYMO		Cloonlavis Glore	LAWPRO, Restoration	View WB Page	View WB on EPA Water Map
34	IE_WE_34G020200	GLORE (MAYO)_020	River	Mayo County Council	DWPA; SAC; Fish;	Moderate	Moderate	Moderate	Good	2022-2027	At risk	Sediment, Hydrological, Morphological, Chemical, Nutrients, UnknownImpactType	Ag, HYMO		Cloonlavis Glore	LAWPRO, Restoration	View WB Page	View WB on EPA Water Map
34	IE_WE_34G030100	GWEESTION_010	River	Mayo County Council	SAC; Fish;	Good	Good	Good	Good	2021 or earlier	Not at risk				Cloonlavis Glore	LAWPRO, Restoration	View WB Page	View WB on EPA Water Map
34	IE_WE_34G030200	GWEESTION_020	River	Mayo County Council	SAC; Fish;	High	High	High	High	2021 or earlier	Not at risk						View WB Page	View WB on EPA Water Map
34	IE_WE_34L010100	LEAFFONY_010	River	Sligo County Council		High	Good	Good	Good	2021 or earlier	Not at risk				Leaffony	LAWPRO, Restoration	View WB Page	View WB on EPA Water Map
34	IE_WE_34L010260	LEAFFONY_020	River	Sligo County Council		Good	Good	Good	Good	2021 or earlier	Not at risk				Leaffony	LAWPRO, Restoration	View WB Page	View WB on EPA Water Map
34	IE_WE_34L020500	LITTLE (STRADE)_010	River	Mayo County Council		Good	Poor	Good	Good	2021 or earlier	Not at risk				Strade Bohola	LAWPRO, Restoration	View WB Page	View WB on EPA Water Map

34	IE_WE_34L040200	LOUGHNAMINOO STREAM_010	River	Mayo County Council		Poor	Poor	Moderate	Good	2022-2027	At risk	Morphological, Nutrients, Organic	HYMO, UWW	Castlebar Lannagh	LAWPRO, Restoration	View WB Page	View WB on EPA Water Map
34	IE_WE_34L050600	LOUGH MUCK STREAM_010	River	Mayo County Council		Moderate	Good	Good	Good	2021 or earlier	Review					View WB Page	View WB on EPA Water Map
34	IE_WE_34L060300	LENYVEE_010	River	Sligo County Council	SAC;	High	High	High	High	2021 or earlier	Not at risk					View WB Page	View WB on EPA Water Map
34	IE_WE_34L070100	LOUGHANABOLL_010	River	Sligo County Council	SAC;	Good	High	High	High	2021 or earlier	Not at risk			Tubbercurry	LAWPRO, Restoration	View WB Page	View WB on EPA Water Map
34	IE_WE_34M010100	MANULLA_010	River	Mayo County Council	SAC;	Good	Poor	Poor	Good	2022-2027	At risk	Nutrients	Ag	Castlebar Lannagh	LAWPRO, Restoration	View WB Page	View WB on EPA Water Map
34	IE_WE_34M010225	MANULLA_020	River	Mayo County Council	SAC; Fish;	Good	Good	Moderate	Good	2022-2027	Review			Castlebar Lannagh	LAWPRO, Restoration	View WB Page	View WB on EPA Water Map
34	IE_WE_34M010300	MANULLA_030	River	Mayo County Council	SAC; Fish;	Moderate	Poor	Moderate	Good	2022-2027	At risk	Morphological, Nutrients	HYMO, Ind	Castlebar Lannagh	LAWPRO, Restoration	View WB Page	View WB on EPA Water Map
34	IE_WE_34M010500	MANULLA_040	River	Mayo County Council	SAC; Fish;	Good	Moderate	Good	Good	2021 or earlier	Not at risk			Castlebar Lannagh	LAWPRO, Restoration	View WB Page	View WB on EPA Water Map
34	IE_WE_34M020010	MOY_010	River	Sligo County Council	SAC; Fish;	Poor	Poor	Moderate	Good	2022-2027	At risk	Hydrological, Morphological, Nutrients	Ag, HYMO, For	Tubbercurry	LAWPRO, Restoration	View WB Page	View WB on EPA Water Map
34	IE_WE_34M020050	MOY_020	River	Sligo County Council	SAC; Fish;	Good	Good	Good	Good	2021 or earlier	Not at risk			Tubbercurry	LAWPRO, Restoration	View WB Page	View WB on EPA Water Map
34	IE_WE_34M020100	MOY_030	River	Sligo County Council	SAC; Fish;	Good	Good	Good	Good	2021 or earlier	Not at risk			Tubbercurry	LAWPRO, Restoration	View WB Page	View WB on EPA Water Map
34	IE_WE_34M020300	MOY_040	River	Sligo County Council	SAC; Fish;	High	Moderate	Moderate	High	2022-2027	At risk	Morphological	HYMO	Tubbercurry	LAWPRO, Restoration	View WB Page	View WB on EPA Water Map
34	IE_WE_34M020400	MOY_050	River	Sligo County Council	SAC; Fish;	Good	Good	High	Good	2021 or earlier	Not at risk			Tubbercurry	LAWPRO, Restoration	View WB Page	View WB on EPA Water Map
34	IE_WE_34M020470	MOY_060	River	Sligo County Council	SAC; Fish;	Good	Good	High	Good	2021 or earlier	Not at risk					View WB Page	View WB on EPA Water Map
34	IE_WE_34M020500	MOY_070	River	Mayo County Council	SAC; Fish;	Good	Good	Good	Good	2021 or earlier	Not at risk					View WB Page	View WB on EPA Water Map
34	IE_WE_34M020650	MOY_080	River	Mayo County Council	SAC; Fish;	Good	Good	Good	Good	2021 or earlier	Not at risk			Killasser GWS	NFGWS, Protection	View WB Page	View WB on EPA Water Map
34	IE_WE_34M020750	MOY_090	River	Mayo County Council	SAC; Fish;	Good	Good	Good	Good	2021 or earlier	Not at risk					View WB Page	View WB on EPA Water Map
34	IE_WE_34M020800	MOY_100	River	Mayo County Council	SAC; Fish; SPA;	Good	Good	Moderate	Good	2022-2027	At risk	Nutrients	Ag			View WB Page	View WB on EPA Water Map
34	IE_WE_34M020850	MOY_110	River	Mayo County Council	SAC; Fish;	Good	Good	Good	Good	2021 or earlier	Not at risk			Attymass Kilgellia GWS	NFGWS, Protection	View WB Page	View WB on EPA Water Map
34	IE_WE_34M021100	MOY_120	River	Mayo County Council	SAC; Fish;	Good	Moderate	Moderate	Good	2022-2027	At risk	Sediment, Morphological, Chemical, Nutrients	HYMO, UR	Moy Estuary	LAWPRO, Restoration	View WB Page	View WB on EPA Water Map
34	IE_WE_34M030300	MULLAGHANOE_010	River	Sligo County Council	SAC; Fish;	Good	Moderate	Good	Good	2021 or earlier	Not at risk			Owengarve Charlestown	LAWPRO, Restoration	View WB Page	View WB on EPA Water Map
34	IE_WE_34M040100	MAD_010	River	Sligo County Council	SAC;	Moderate	Moderate	Moderate	Good	2022-2027	At risk	Sediment, Morphological	For, HYMO	Tubbercurry	LAWPRO, Restoration	View WB Page	View WB on EPA Water Map
34	IE_WE_34M050400	MEANDER_010	River	Mayo County Council	SAC;	Good	Good	Good	Good	2021 or earlier	Not at risk			Castlebar Lannagh	LAWPRO, Restoration	View WB Page	View WB on EPA Water Map
34	IE_WE_34M190890	MOYNE_010	River	Mayo County Council	SAC; SPA;	Unassigned	Good	Moderate	Good	2022-2027	Review			Moy Estuary	LAWPRO, Restoration	View WB Page	View WB on EPA Water Map
34	IE_WE_34N190740	NORTH COOLNAHA_010	River	Mayo County Council		Unassigned	Good	Good	Good	2021 or earlier	Review			Cloonlavis Glore	LAWPRO, Restoration	View WB Page	View WB on EPA Water Map
34	IE_WE_34O010050	OWENAHAR_010	River	Sligo County Council	SAC;	High	High	High	High	2021 or earlier	Not at risk					View WB Page	View WB on EPA Water Map
34	IE_WE_34O010100	OWENAHAR_020	River	Sligo County Council	SAC;	Good	Good	High	Good	2021 or earlier	Not at risk					View WB Page	View WB on EPA Water Map
34	IE_WE_34O030050	OWENGARVE (SLIGO)_010	River	Mayo County Council	SAC; Fish;	Good	Good	Good	High	2022-2027	At risk	Sediment, Hydrological, Morphological, Nutrients	HYMO	Owengarve Charlestown	LAWPRO, Restoration	View WB Page	View WB on EPA Water Map
34	IE_WE_34O030100	OWENGARVE (SLIGO)_020	River	Mayo County Council	SAC; Fish;	High	Good	Good	High	2022-2027	At risk	Morphological	HYMO	Owengarve Charlestown	LAWPRO, Restoration	View WB Page	View WB on EPA Water Map
34	IE_WE_34O030200	OWENGARVE (SLIGO)_030	River	Sligo County Council	SAC; Fish;	High	High	High	High	2021 or earlier	Not at risk			Owengarve Charlestown	LAWPRO, Restoration	View WB Page	View WB on EPA Water Map
34	IE_WE_34O040200	OWENLOBNAGLAUR_010	River	Roscommon County Council	SAC;	Good	Good	High	Good	2021 or earlier	Not at risk			Owengarve Charlestown	LAWPRO, Restoration	View WB Page	View WB on EPA Water Map
34	IE_WE_34O050400	OUGHTAGH_010	River	Mayo County Council		Good	Good	Good	Good	2021 or earlier	Not at risk			Strade Bohola	LAWPRO, Restoration	View WB Page	View WB on EPA Water Map
34	IE_WE_34P010100	POLLAGH_010	River	Mayo County Council	SAC;	High	High	Good	High	2022-2027	At risk	Morphological	HYMO	Cloonlavis Glore	LAWPRO, Restoration	View WB Page	View WB on EPA Water Map
34	IE_WE_34P010200	POLLAGH_020	River	Mayo County Council	SAC;	High	High	Good	High	2022-2027	At risk	Morphological	HYMO	Cloonlavis Glore	LAWPRO, Restoration	View WB Page	View WB on EPA Water Map
34	IE_WE_34P010260	POLLAGH_030	River	Mayo County Council	SAC;	Good	Good	Good	Good	2021 or earlier	Not at risk			Cloonlavis Glore	LAWPRO, Restoration	View WB Page	View WB on EPA Water Map
34	IE_WE_34P010300	POLLAGH_040	River	Mayo County Council	SAC;	Good	Good	Moderate	Good	2022-2027	Review			Cloonlavis Glore	LAWPRO, Restoration	View WB Page	View WB on EPA Water Map
34	IE_WE_34Q070710	Quigabar_010	River	Sligo County Council		Unassigned	Good	Good	Good	2021 or earlier	Review			Killala Bay	LAWPRO, Restoration	View WB Page	View WB on EPA Water Map
34	IE_WE_34R010200	RATHROEEN STREAM_010	River	Mayo County Council	SAC; SPA;	Unassigned	Good	Good	Good	2021 or earlier	Review			Moy Estuary	LAWPRO, Restoration	View WB Page	View WB on EPA Water Map
34	IE_WE_34S010400	SHANVOLAHAN_010	River	Mayo County Council	SAC;	Moderate	Moderate	Moderate	Good	2022-2027	At risk	Hydrological, Morphological	HYMO, For, Peat	Upper and Lower Deel (Crossmolina)	LAWPRO, Restoration	View WB Page	View WB on EPA Water Map
34	IE_WE_34S020100	SONNAGH (MOY)_010	River	Mayo County Council	SAC;	Moderate	Poor	Moderate	Good	2022-2027	At risk	Sediment, Morphological, Nutrients	Ag, HYMO, M+Q	Sonnagh (Moy)	LAWPRO, Restoration	View WB Page	View WB on EPA Water Map

34	IE_WE_34S030200	SPADDAGH_010	River	Mayo County Council	DWPA; SAC; Fish;	Good	Good	Good	Good	2021 or earlier	Not at risk					View WB Page	View WB on EPA Water Map
34	IE_WE_34S040800	STRADE_010	River	Mayo County Council	SAC;	High	Poor	High	Good	2021 or earlier	Not at risk			Strade Bohola	LAWPRO, Restoration	View WB Page	View WB on EPA Water Map
34	IE_WE_34S050300	SWINFORD_010	River	Mayo County Council		Good	Good	Moderate	Good	2022-2027	At risk	UnknownImpactType	Unknown	Killaturley GWS	NFGWS, Protection	View WB Page	View WB on EPA Water Map
34	IE_WE_34S060400	SLIEVECLAUR_010	River	Mayo County Council		Good	Good	Poor	Good	2022-2027	Review			Upper and Lower Deel (Crossmolina)	LAWPRO, Restoration	View WB Page	View WB on EPA Water Map
34	IE_WE_34S610980	Scurmore_010	River	Sligo County Council	SAC; SPA;	Unassigned	Moderate	Moderate	Good	2022-2027	Review			Moy Estuary	LAWPRO, Restoration	View WB Page	View WB on EPA Water Map
34	IE_WE_34T010200	TRIMOGE_010	River	Mayo County Council	SAC; Fish;	Moderate	Moderate	Moderate	Good	2022-2027	At risk	Hydrological, Nutrients, Organic, UnknownImpactType	UWW, M+Q	Trimoge	LAWPRO, Restoration	View WB Page	View WB on EPA Water Map
34	IE_WE_34T010300	TRIMOGE_020	River	Mayo County Council	SAC; Fish;	Good	Good	Good	Good	2021 or earlier	Not at risk					View WB Page	View WB on EPA Water Map
34	IE_WE_34T010500	TRIMOGE_030	River	Mayo County Council	SAC; Fish;	High	High	Good	High	2022-2027	At risk	Morphological	HYMO			View WB Page	View WB on EPA Water Map
34	IE_WE_34T020050	TUBBERCURRY_010	River	Sligo County Council		Poor	Poor	Poor	Good	2022-2027	At risk	Nutrients, Organic	UR	Tubbercurry	LAWPRO, Restoration	View WB Page	View WB on EPA Water Map
34	IE_WE_34T020200	TUBBERCURRY_020	River	Sligo County Council	SAC;	Poor	Poor	Moderate	Good	2022-2027	At risk	Nutrients	Ag	Tubbercurry	LAWPRO, Restoration	View WB Page	View WB on EPA Water Map
34	IE_WE_34T030400	TUBBERCURRY STREAM_010	River	Sligo County Council		Poor	Poor	Poor	Good	2022-2027	At risk	Morphological, Nutrients, Organic	HYMO, UR, UWW	Tubbercurry	LAWPRO, Restoration	View WB Page	View WB on EPA Water Map
34	IE_WE_34T560640	TULLYMORE (Mayo)_010	River	Mayo County Council		Unassigned	Poor	High	Good	2021 or earlier	Review			Castlebar Lannagh	LAWPRO, Restoration	View WB Page	View WB on EPA Water Map
34	IE_WE_34T830920	TULLYEGAN_010	River	Mayo County Council	SAC;	Unassigned	Moderate	Moderate	Good	2022-2027	Review			Moy Estuary	LAWPRO, Restoration	View WB Page	View WB on EPA Water Map
34	IE_WE_34Y010100	YELLOW (FOXFORD)_010	River	Mayo County Council	SAC; Fish;	High	High	High	High	2021 or earlier	Not at risk					View WB Page	View WB on EPA Water Map
34	IE_WE_34Y010400	YELLOW (FOXFORD)_020	River	Mayo County Council	SAC; Fish;	High	High	High	High	2021 or earlier	Not at risk					View WB Page	View WB on EPA Water Map
34	IE_WE_34Y020155	YELLOW (KNOCK)_010	River	Mayo County Council		Moderate	Moderate	Moderate	Good	2022-2027	At risk	Morphological	For, HYMO	Cloonlavis Glore	LAWPRO, Restoration	View WB Page	View WB on EPA Water Map
34	IE_WE_34Y020400	YELLOW (KNOCK)_020	River	Mayo County Council	SAC;	Good	Good	Good	Good	2021 or earlier	Not at risk			Cloonlavis Glore	LAWPRO, Restoration	View WB Page	View WB on EPA Water Map
34	IE_WE_420_0100	Cloonaghmore Estuary	Transitional	Mayo County Council	SPA;	Unassigned	High	Unassigned	Good	Unknown	Not at risk					View WB Page	View WB on EPA Water Map
34	IE_WE_420_0300	Moy Estuary	Transitional	Mayo County Council	SAC; Fish; SPA;	Moderate	Moderate	Moderate	Good	2022-2027	At risk	Nutrients	DWTS, UWW, Ag	Moy Estuary	LAWPRO, Restoration	View WB Page	View WB on EPA Water Map