

Cycle 3

HA 33 Blacksod-Broadhaven Catchment Report, May 2024

Introduction

Water Quality
Summary

High Status
Objectives

Water Quality
Changes

WFD Risk

Significant
Pressures

Action

Summary
Information

Introduction

This report provides an overview of the water quality in the Blacksod-Broadhaven Catchment and the pressures impacting on water quality. This report is based on data up to 2021. The latest water quality data, dashboards and maps throughout this report are available on catchments.ie and [EPA Water Map](https://www.epa.ie/water/water_quality/water_quality_maps/).

The Blacksod-Broadhaven Catchment includes the area drained by all streams entering tidal water in Blacksod and Broadhaven Bays and between Corraun Point and Benwee Head, Co. Mayo, draining a total area of 1,302km². The largest urban centre in the catchment is Belmullet. The other main urban centres in this catchment are Bangor and Keel.

The Blacksod-Broadhaven catchment is divided into 11 subcatchments with 58 river waterbodies, 13 lake waterbodies, four transitional waterbodies, six coastal waterbodies and ten groundwater bodies.

[View the Blacksod-Broadhaven Catchment on the EPA Water Map](#)

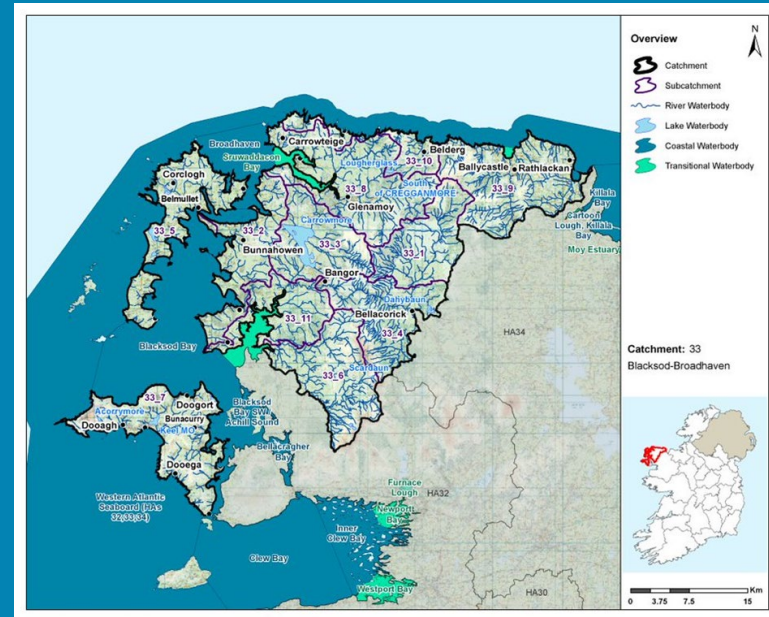
Previous Catchment Assessments

Previous catchment assessments, which provide additional historic context and information, are archived on catchments.ie:

- [Cycle 2 Catchment Assessments – published September 2018](#)
- [Cycle 3 Draft Catchment Assessments – published September 2021](#)

Online Dashboards

Links to online dashboards are provided in this report – these numbers may vary from those in this document as time progress and the online dashboards are updated based on the latest data and scientific assessments.



Overview of Subcatchments in the Blacksod-Broadhaven Catchment

Water Quality Summary

Introduction

Water Quality Summary

High Status Objectives

Water Quality Changes

WFD Risk

Significant Pressures

Action

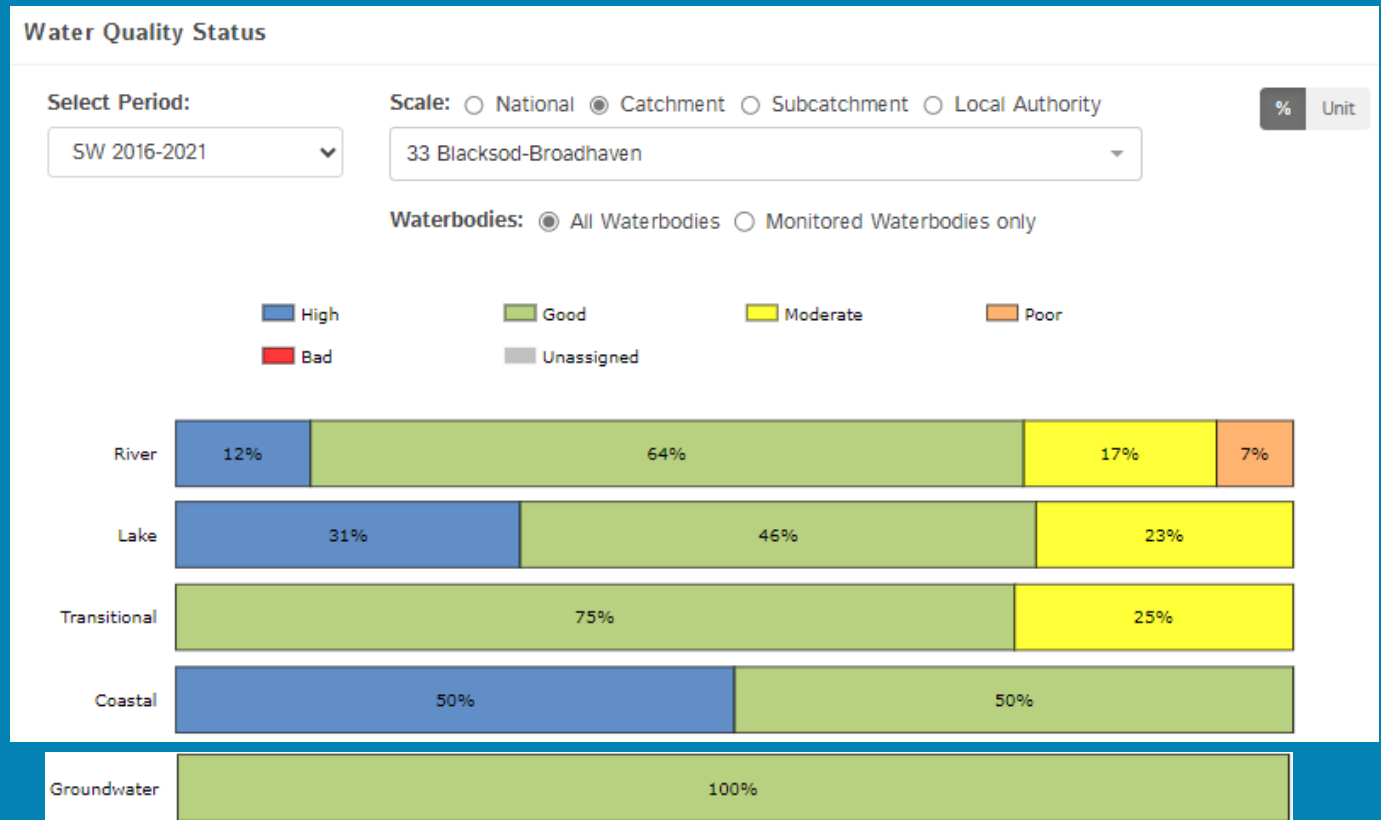
Summary Information

The dashboard below provides a breakdown of water quality status for surface and groundwater bodies in the Blacksod-Broadhaven Catchment.

A total of 78% of surface waterbodies were at Good or High Ecological Status in the 2016-2021 monitoring period. One hundred percent of groundwater bodies were at Good status.

Go to EPA Water Maps for WFD Status

[EPA Water Map](#)



Water quality status 2016-2021 for the Blacksod-Broadhaven Catchment.
View Online Dashboard: <https://www.catchments.ie/data/#/dashboard/waterquality>

High Status Objective Waterbodies

High status waters are prioritised for protection and action.

There are 11 waterbodies with a **High Ecological Status Objective (HSO)** in the Blacksod-Broadhaven Catchment, with seven currently not meeting their environmental objective of High.

Grants for septic tank upgrades may be available in high status objective catchment areas - you can learn more and check your Eircode for eligibility here: <https://www.gov.ie/en/publication/6cc1e-domestic-waste-water-treatment-systems-septic-tanks>

[View HSO river waterbodies in this catchment.](#)

See *Status and Risk / High Status Objective* for other waterbody types.

Introduction

Water Quality Summary

High Status Objectives

Water Quality Changes

WFD Risk

Significant Pressures

Action

Summary Information

Water Quality Status - High Status Objective Waterbodies

Select Type: All Surface Waters Scale: Catchment Local Authority

33 Blacksod-Broadhaven

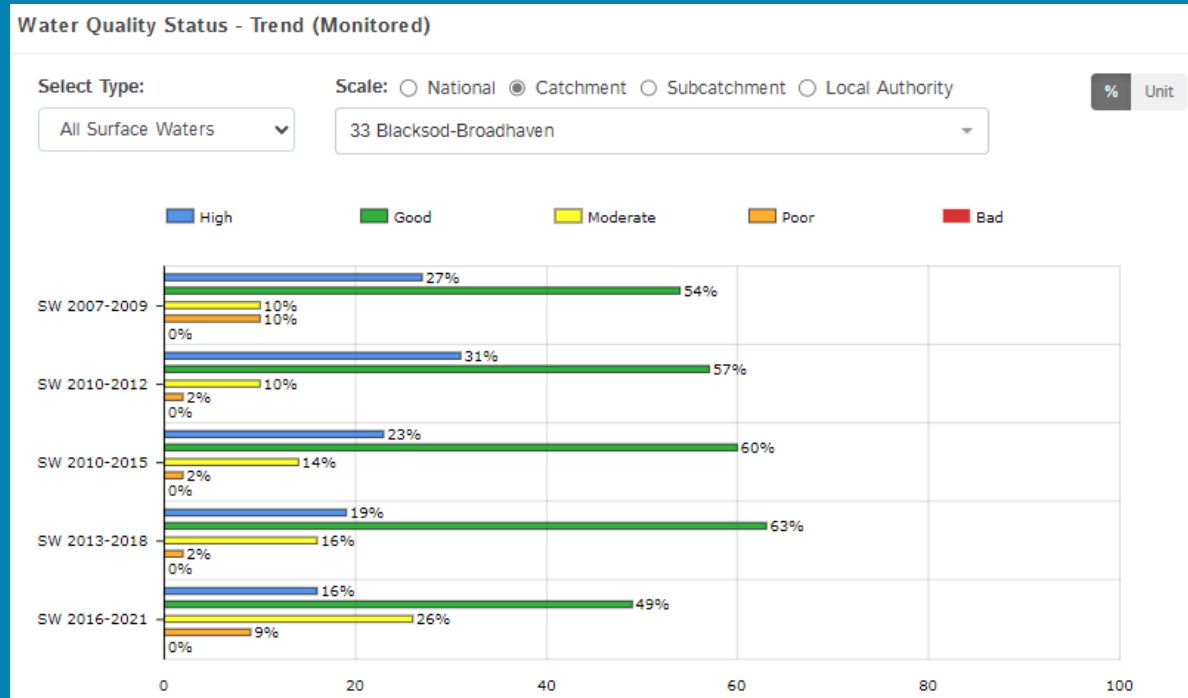
	SW 2007-2009	SW 2010-2012	SW 2010-2015	SW 2013-2018	SW 2016-2021
BARROOSKY_010 (River)	High	High	High	Good	Good
Broadhaven (Coastal)	Good	High	Good	Good	Good
GLENAMOY_010 (River)	High	High	High	Good	Good
GLENAMOY_020 (River)	High	High	High	Poor	Poor
GLENGLASSERA_010 (River)	High	High	High	High	High
KEERGLEN_010 (River)	High	High	High	High	Moderate
OWENMORE (MAYO)_030 (River)	High	High	High	High	High
OWENMORE (MAYO)_040 (River)	Unassigned	High	High	High	High
SHESKIN STREAM_010 (River)	High	High	High	High	High
Sruwaddacon Bay (Transitional)	High	Good	High	Good	Moderate
Tullaghan Bay (Transitional)	High	Good	High	High	Good

Water quality status for High Ecological Status Objective waterbodies.

View Online Dashboard: <https://www.catchments.ie/data/#/dashboard/waterquality>

Water Quality Changes

Below illustrates the changes in ecological status in monitored surface waterbodies over the last five monitoring cycles in the Blacksod-Broadhaven Catchment. Nationally while there have been improvements in some waterbodies, these have been offset by declines elsewhere.



Ecological status trends for monitored surface waterbodies over the last five monitoring cycles in the Blacksod-Broadhaven Catchment. **View online dashboard:** <https://www.catchments.ie/data/#/dashboard/waterquality>

A total of 69 (76%) waterbodies are currently meeting their environmental objective of Good or High Ecological Status.

	Total	Achieving Environmental Objectives (2016-2021)	High Status Environmental Objectives Waterbodies	Achieving High Status Environmental Objectives (2016-2021)
Rivers	58	42 (72%)	8	4 (50%)
Canals	-	-	-	-
Lakes	13	10 (77%)	0	0 (0%)
Transitional	4	2 (50%)	2	0 (0%)
Coastal	6	5 (83%)	1	0 (0%)
Groundwater	10	10 (100%)	0	0 (0%)

Introduction

Water Quality Summary

High Status Objectives

Water Quality Changes

WFD Risk

Significant Pressures

Action

Summary Information

WFD Risk

Introduction

Water Quality Summary

High Status Objectives

Water Quality Changes

WFD Risk

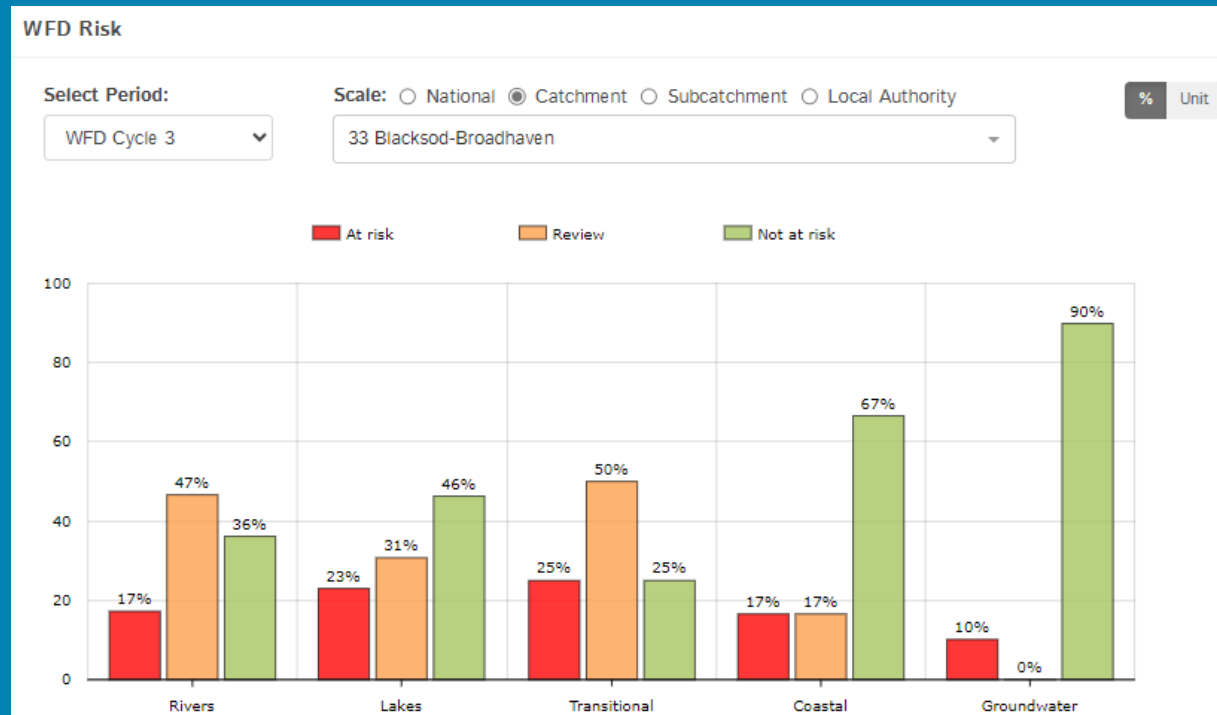
Significant Pressures

Action

Summary Information

A total of 16 (18%) waterbodies are *At Risk* of not meeting their environmental objective in the Blacksod-Broadhaven Catchment, while 34 (37%) are under *Review* and 41 (45%) are *Not At Risk*.

Go to [EPA Water Map](#) to see WFD Risk for this catchment



WFD Risk for the Blacksod-Broadhaven Catchment based on 2016-2021 data.
View Online Dashboard: <https://www.catchments.ie/data/#/dashboard/waterquality>

There are currently no heavily modified water bodies (HMWBs) in the Blacksod-Broadhaven Catchment.

There are no artificial waterbodies in the Blacksod-Broadhaven Catchment.

The [EPA's characterisation outcome report](#) has more information on WFD Risk

Click [here](#) for more information on significant pressures

Introduction

Water Quality Summary

High Status Objectives

Water Quality Changes

WFD Risk

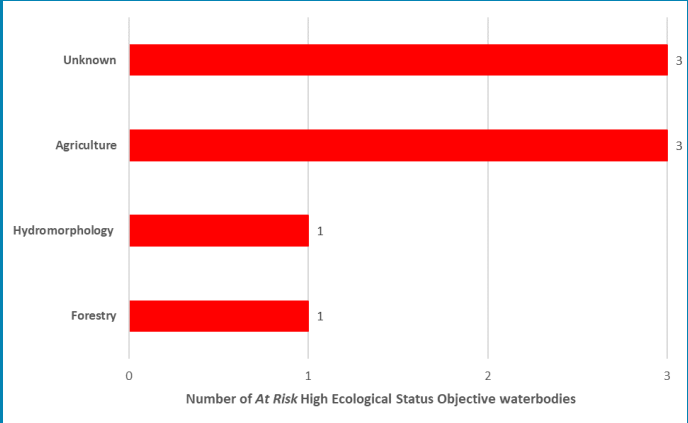
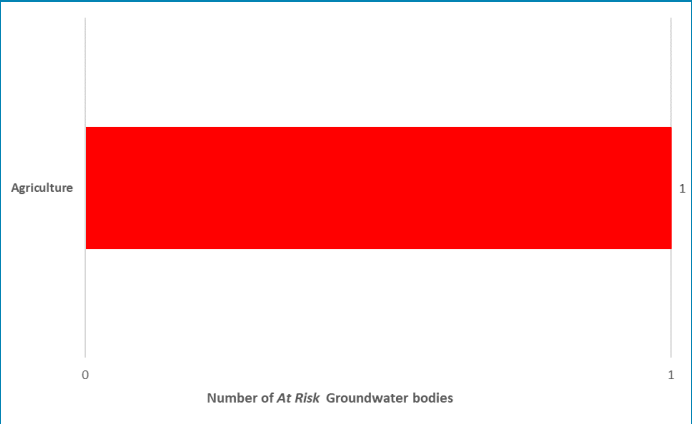
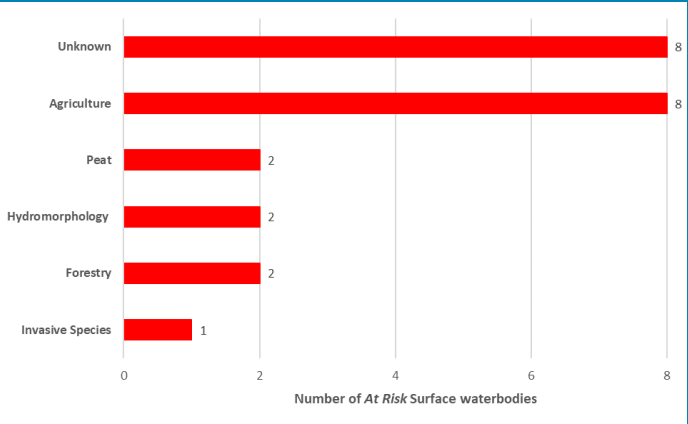
Significant Pressures

Action

Summary Information

Significant Pressures driving risk

Significant pressure types impacting the 15 *At Risk* surface waterbodies and one groundwater body are broken down in the figures below, including significant pressure information for the five *At Risk* High Ecological Status Objective waterbodies.



The issues driven by these pressures are mainly nutrient pollution, sediment and altered morphological condition (habitat) impacts for surface water and chemical quality diminution for surface water and nutrient pollution impacts for groundwaters. For more information, see <https://www.catchments.ie/data/#/dashboard/pressure?k=i351zs>.

Go to the Summary Information section to get significant pressure and issue data for At Risk waterbodies within the Blacksod-Broadhaven Catchment.

Significant Pressures

Introduction

Agriculture is the top significant pressure impacting 56% of the 16 *At Risk* waterbodies within the Blacksod-Broadhaven Catchment, followed by 13% impacted by forestry, hydromorphological pressures and peat.

Water Quality Summary

High Status Objectives

Water Quality Changes

WFD Risk

Significant Pressures

Action

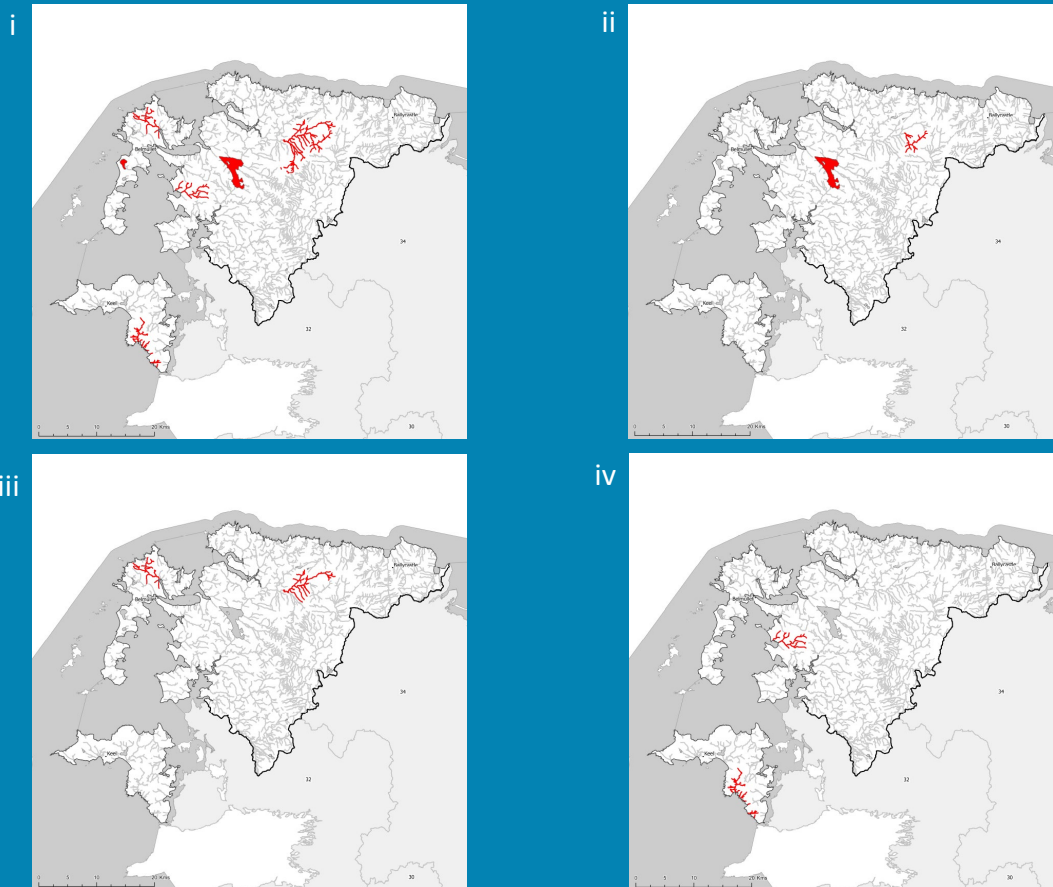
Summary Information

River Waterbody
Significant Pressure in Waterbody At Risk
Other Waterbodies
Lake, Coastal and Transitional Waterbody
Significant Pressure in Waterbody At Risk
Other Waterbodies

The catchments.ie dashboards will show all significant pressures identified for this catchment.

www.catchments.ie/data/#/dashboard/pressure

Go to the [EPA Water Maps](#) for the locations of all significant pressure types identified for this catchment



Locations of At Risk surface waterbodies impacted by i) Agriculture, ii) Forestry, iii) Hydromorphological Pressures and iv) Peat.

Introduction

Water Quality
Summary

High Status
Objectives

Water Quality
Changes

WFD Risk

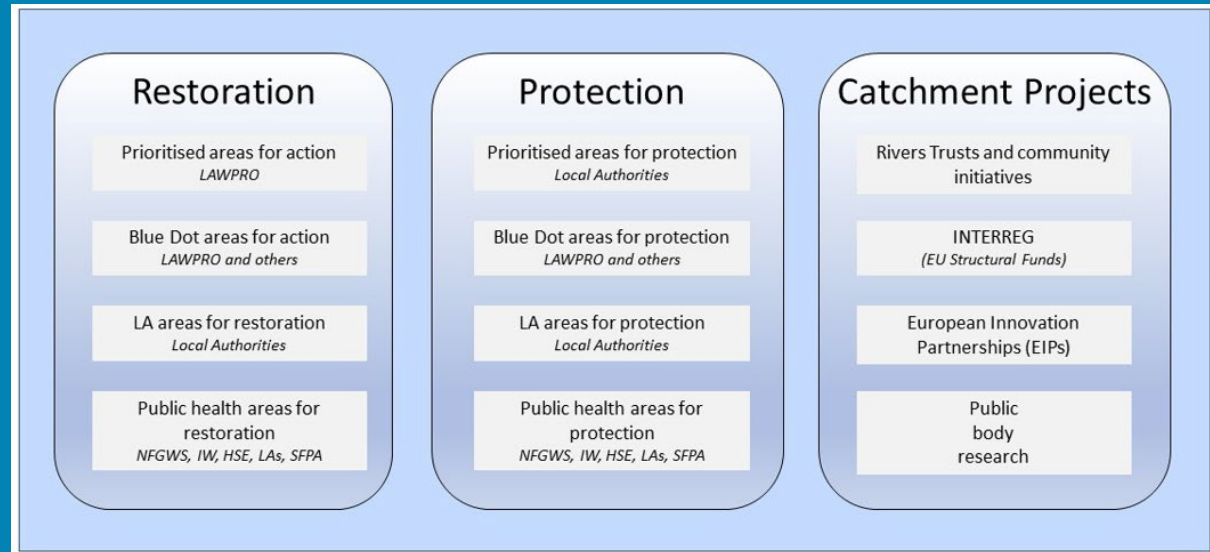
Significant
Pressures

Action

Summary
Information

Priority Areas for Action

A number of waterbodies have been prioritised through the selection of Areas for Action. There were two Priority Areas for Action identified for the second river basin management planning cycle in the Blacksod-Broadhaven Catchment. This has increased to a total of seven Areas for Restoration and two Areas for Protection for the third cycle. ***Go to the summary information section to get Area for Action information for waterbodies within the Blacksod-Broadhaven Catchment.***



Types of Areas for Action under the third cycle River Basin Management Plan

- View the current progress of Areas for Action and Summary Reports completed by LAWPRO, on [catchments.ie](https://www.catchments.ie) and the EPA Water Map:
 - <https://www.catchments.ie/data/#/areaforaction>
 - https://gis.epa.ie/EPAMaps/default?easting=?&northing=?&lid=EPA:WFD_AreasForAction
- LAWPRO have also published detailed desktop studies on Prioritised Areas for Action (PAAs) which are available their website: <https://lawwaters.ie/desktop-studies/>
- Information on Areas for Action for the second cycle is available in Cycle 2 Catchment Assessments which have been archived on [catchments.ie](https://www.catchments.ie/download/cycle-2-catchment-assessments-published-september-2018/): <https://www.catchments.ie/download/cycle-2-catchment-assessments-published-september-2018/>

Introduction

Water Quality
Summary

High Status
Objectives

Water Quality
Changes

WFD Risk

Significant
Pressures

Action

Summary
Information

Summary information for all waterbodies in the Blacksod-Broadhaven Catchment

The next page provides a table with a breakdown of key information for all waterbodies in this catchment. The key is provided below. Additional information for each waterbody is available on <https://www.catchments.ie/data>, including a breakdown of status, a monitoring schedule for monitored waterbodies and downloadable chemistry results, where available.

Protected Area categories	BW: Bathing Water DW: Drinking Water Fish: Salmonid Waters NSA: Nutrient Sensitive Areas SAC: Special Area of Conservation, Natura 2000 (water dependent habitats and species) SF: Shellfish Area SPA: Special Area of Protection, Natura 2000 (water dependent habitat and species)
Significant pressure* types categories <i>* For At Risk waterbodies only</i>	Ab: Abstractions Ag: Agriculture Aq: Aquaculture At: Atmospheric DWW: Domestic Wastewater For: Forestry HPS: Historically polluted sites HYMO: Hydromorphology Ind: Industry IS: Invasive Species M+Q: Mines and Quarries Peat: Peat Drainage and Extraction UR: Urban Run-Off UWW: Urban Wastewater Was: Waste WT: Water Treatment

Catchment Code	Waterbody (WB) Code	WB Name	WB Type	Local Authority	Protected Area	Status 10-15	Status 13-18	Status 16-21	Environmental Objective	Environmental Objective Date	WFD Risk 16-21	Significant Issue(s)	Significant Pressure(s)	Area for Action (AFA)	AFA (lead, type)	Link to WB page on catchments.ie	Link to WB on EPA Water Map
31, 32, 33, 34, 35	IE_WE_250_0000	Western Atlantic Seaboard (HAS 32;33;34)	Coastal	Mayo County Council	BW; SAC; SPA; SF;	Unassigned	High	High	Good	2021 or earlier	Not at risk					View WB Page	View WB on EPA Water Map
32, 33	IE_WE_360_0000	Blacksod Bay	Coastal	Mayo County Council	BW; SAC; SPA; SF;	Unassigned	High	High	Good	2021 or earlier	Not at risk					View WB Page	View WB on EPA Water Map
32, 33	IE_WE_370_0000	Blacksod Bay SW / Achill Sound	Coastal	Mayo County Council	SF;	Unassigned	High	High	Good	2021 or earlier	Not at risk			Blacksod Bay SW and Achill Sound_Public Health	LAWPRO, Restoration	View WB Page	View WB on EPA Water Map
33	IE_WE_400_0000	Broadhaven	Coastal	Mayo County Council	BW; SAC; SPA;	Good	Good	Good	High	2022-2027	At risk	UnknownImpactType	Unknown			View WB Page	View WB on EPA Water Map
33	IE_WE_405_0000	Belmullet Bay	Coastal	Mayo County Council	SAC; SPA;	Unassigned	Unassigned	Good	Good	2021 or earlier	Review					View WB Page	View WB on EPA Water Map
33, 34	IE_WE_420_0000	Killala Bay	Coastal	Mayo County Council	BW; SAC; SPA; SF;	Good	Good	Good	Good	2021 or earlier	Not at risk			Killala Bay	LAWPRO, Restoration	View WB Page	View WB on EPA Water Map
33	IE_WE_G_0026	Achill	Groundwater	Mayo County Council	DWPA; SAC	Good	Good	Good	Good	2021 or earlier	Not at risk					View WB Page	View WB on EPA Water Map
32, 33, 34	IE_WE_G_0027	Malranny	Groundwater	Mayo County Council	DWPA; SAC	Good	Good	Good	Good	2021 or earlier	Not at risk					View WB Page	View WB on EPA Water Map
32, 33, 34	IE_WE_G_0030	Laherdaun	Groundwater	Mayo County Council	DWPA; SAC	Good	Good	Good	Good	2021 or earlier	Not at risk					View WB Page	View WB on EPA Water Map
33, 34	IE_WE_G_0031	Deel	Groundwater	Mayo County Council	DWPA; SAC	Good	Good	Good	Good	2021 or earlier	Not at risk					View WB Page	View WB on EPA Water Map
33, 34	IE_WE_G_0041	Bellacorick-Killala	Groundwater	Mayo County Council	DWPA; SAC	Good	Good	Good	Good	2021 or earlier	Not at risk					View WB Page	View WB on EPA Water Map
33, 34	IE_WE_G_0046	Killala North	Groundwater	Mayo County Council	DWPA; SAC	Good	Good	Good	Good	2021 or earlier	Not at risk					View WB Page	View WB on EPA Water Map
33, 34	IE_WE_G_0047	Killala South	Groundwater	Mayo County Council	DWPA; SAC	Good	Good	Good	Good	2021 or earlier	Not at risk					View WB Page	View WB on EPA Water Map
33	IE_WE_G_0052	Bangor	Groundwater	Mayo County Council	DWPA; SAC	Good	Good	Good	Good	2021 or earlier	Not at risk					View WB Page	View WB on EPA Water Map
32, 33, 34	IE_WE_G_0057	Belmullet	Groundwater	Mayo County Council	DWPA; SAC	Good	Good	Good	Good	2021 or earlier	Not at risk					View WB Page	View WB on EPA Water Map
33	IE_WE_G_0065	Belmullet Gravels	Groundwater	Mayo County Council	DWPA; SAC	Good	Good	Good	Good	2021 or earlier	At risk	ChemicalQualityDiminution ForSW, Nutrients	Ag			View WB Page	View WB on EPA Water Map
33	IE_WE_33_1803	Corryphuill North	Lake	Mayo County Council	SAC; SPA;	Unassigned	High	High	Good	2021 or earlier	Not at risk					View WB Page	View WB on EPA Water Map
33	IE_WE_33_1804	South of CREGGANMORE	Lake	Mayo County Council	SAC;	Unassigned	Good	Good	Good	2021 or earlier	Not at risk					View WB Page	View WB on EPA Water Map
33	IE_WE_33_1872	Scardaun	Lake	Mayo County Council	SAC; SPA;	Unassigned	High	High	Good	2021 or earlier	Not at risk					View WB Page	View WB on EPA Water Map
33	IE_WE_33_1876	Corryphuill South	Lake	Mayo County Council	SAC; SPA;	Unassigned	High	High	Good	2021 or earlier	Not at risk					View WB Page	View WB on EPA Water Map
33	IE_WE_33_1889	Cross	Lake	Mayo County Council	SAC; SPA;	Moderate	Moderate	Moderate	Good	2022-2027	At risk	Nutrients	Ag	Cross Lake Imleach Beag Thuaigh	LAWPRO, Restoration	View WB Page	View WB on EPA Water Map
33	IE_WE_33_1892	Acorrymore	Lake	Mayo County Council	DWPA; SAC;	Good	Good	Good	Good	2021 or earlier	Not at risk					View WB Page	View WB on EPA Water Map
33	IE_WE_33_1893	Leam	Lake	Mayo County Council	SAC; SPA;	Unassigned	Unassigned	Good	Good	2021 or earlier	Review					View WB Page	View WB on EPA Water Map
33	IE_WE_33_1895	Keel MO	Lake	Mayo County Council	SAC;	Good	Moderate	Moderate	Good	2022-2027	At risk	UnknownImpactType	Unknown			View WB Page	View WB on EPA Water Map
33	IE_WE_33_1903	Termoncarragh	Lake	Mayo County Council	SAC; SPA;	Unassigned	Unassigned	Good	Good	2021 or earlier	Review					View WB Page	View WB on EPA Water Map
33	IE_WE_33_1906	Lougherglass	Lake	Mayo County Council	SAC;	Unassigned	Good	Good	Good	2021 or earlier	Not at risk					View WB Page	View WB on EPA Water Map
33	IE_WE_33_1912	Dahybaun	Lake	Mayo County Council	SAC;	Unassigned	High	High	Good	2021 or earlier	Review					View WB Page	View WB on EPA Water Map
33	IE_WE_33_1914	Carrowmore	Lake	Mayo County Council	DWPA; SAC; SPA;	Moderate	Moderate	Moderate	Good	2022-2027	At risk	Hydrological, Morphological, Chemical, Nutrients	Ag, For	Carrowmore Lake	LAWPRO, Restoration	View WB Page	View WB on EPA Water Map
33	IE_WE_33_1919	Dooniver Sruhull	Lake	Mayo County Council		Unassigned	Good	Good	Good	2021 or earlier	Review					View WB Page	View WB on EPA Water Map
33	IE_WE_33A020100	ALTNABROCKY_010	River	Mayo County Council	SAC; SPA;	Good	Good	Good	Good	2021 or earlier	Not at risk					View WB Page	View WB on EPA Water Map
33	IE_WE_33A040520	ACHADH_GHLAISĀ-N_010	River	Mayo County Council	SAC; SPA;	Unassigned	Good	Good	Good	2021 or earlier	Review					View WB Page	View WB on EPA Water Map
33	IE_WE_33B010100	BALLINGLEN_010	River	Mayo County Council		Moderate	Moderate	Poor	Good	2022-2027	At risk	Sediment, UnknownImpactType	Unknown	Ballinglen	LAWPRO, Restoration	View WB Page	View WB on EPA Water Map
33	IE_WE_33B010200	BALLINGLEN_020	River	Mayo County Council	SAC;	Moderate	Good	Moderate	Good	2022-2027	Review			Ballinglen	LAWPRO, Restoration	View WB Page	View WB on EPA Water Map
33	IE_WE_33B020200	BELDERG_010	River	Mayo County Council	SAC;	Good	Good	Moderate	Good	2022-2027	At risk	UnknownImpactType	Unknown			View WB Page	View WB on EPA Water Map
33	IE_WE_33B030960	BARNYNAGAPPUL STREAM_010	River	Mayo County Council	SAC; SPA;	Unassigned	Good	Good	Good	2021 or earlier	Review					View WB Page	View WB on EPA Water Map
33	IE_WE_33B050810	BALLINAPARK_010	River	Mayo County Council	SAC;	Unassigned	Unassigned	Good	Good	2021 or earlier	Review					View WB Page	View WB on EPA Water Map
33	IE_WE_33B070200	BELLANABOY_010	River	Mayo County Council	SAC;	Good	Good	Good	Good	2021 or earlier	Not at risk			Carrowmore Lake	LAWPRO, Restoration	View WB Page	View WB on EPA Water Map
33	IE_WE_33B080400	BARROOSKY_010	River	Mayo County Council	SAC;	High	Good	Good	High	2022-2027	At risk	Sediment, Nutrients	Ag	Glenamoy_Blue Dot	LAWPRO, Restoration	View WB Page	View WB on EPA Water Map
33	IE_WE_33B140620	BARR_NA_COILLEADH_010	River	Mayo County Council	SAC; SPA;	Unassigned	Unassigned	Good	Good	2021 or earlier	Review					View WB Page	View WB on EPA Water Map

33	IE_WE_33C010700	CLOONALAGHAN_010	River	Mayo County Council	SAC; SPA;	Good	Good	Good	Good	2021 or earlier	Not at risk					View WB Page	View WB on EPA Water Map
33	IE_WE_33C030050	CLOONEEN (MAYO)_010	River	Mayo County Council	SAC; SPA;	Moderate	Moderate	Poor	Good	2022-2027	At risk	Hydrological, Morphological	Ag, HYMO			View WB Page	View WB on EPA Water Map
33	IE_WE_33C040710	Coimhne n an mhAisa_010	River	Mayo County Council	SAC; SPA;	Unassigned	Unassigned	Good	Good	2021 or earlier	Review			Cross Lake Imleach Beag Thuaiagh	LAWPRO, Restoration	View WB Page	View WB on EPA Water Map
33	IE_WE_33C520880	CABINTOWN_010	River	Mayo County Council		Unassigned	Good	Good	Good	2021 or earlier	Review			Ballinglen	LAWPRO, Restoration	View WB Page	View WB on EPA Water Map
33	IE_WE_33D010200	DOOEGA_010	River	Mayo County Council	SAC;	Good	Moderate	Moderate	Good	2022-2027	At risk	Sediment, Nutrients	Ag, IS, Peat	Doega_Public Health	Mayo County Council, Restoration	View WB Page	View WB on EPA Water Map
33	IE_WE_33D020100	DOOLOUGH STREAM_010	River	Mayo County Council	SAC; SPA;	Poor	Moderate	Poor	Good	2022-2027	At risk	Sediment, Nutrients	Ag, Peat			View WB Page	View WB on EPA Water Map
33	IE_WE_33F010370	AN FÁB MĂ"R_010	River	Mayo County Council	SAC;	Unassigned	Unassigned	Good	Good	2021 or earlier	Review					View WB Page	View WB on EPA Water Map
33	IE_WE_33G010020	GLENAMOY_010	River	Mayo County Council	SAC;	High	Good	Good	High	2022-2027	At risk	Sediment	For, Ag	Glenamoy_Blue Dot	LAWPRO, Restoration	View WB Page	View WB on EPA Water Map
33	IE_WE_33G010050	GLENAMOY_020	River	Mayo County Council	SAC;	High	Poor	Poor	High	2022-2027	At risk	Morphological, UnknownImpactType	HYMO, Unknown, Ag	Glenamoy_Blue Dot	LAWPRO, Restoration	View WB Page	View WB on EPA Water Map
33	IE_WE_33G010100	GLENAMOY_030	River	Mayo County Council	SAC;	Good	Good	Good	Good	2021 or earlier	Not at risk			Glenamoy_Blue Dot	LAWPRO, Restoration	View WB Page	View WB on EPA Water Map
33	IE_WE_33G020200	GLENCULLIN (NORTH MAYO)_010	River	Mayo County Council		Good	Good	Good	Good	2021 or earlier	Not at risk					View WB Page	View WB on EPA Water Map
33	IE_WE_33G030100	GLENCULLIN (WEST MAYO)_010	River	Mayo County Council	SAC;	Good	Good	Good	Good	2021 or earlier	Not at risk			Carrowmore Lake	LAWPRO, Restoration	View WB Page	View WB on EPA Water Map
33	IE_WE_33G040800	GORTMORE STREAM (MAYO)_010	River	Mayo County Council		Good	Good	Good	Good	2021 or earlier	Not at risk					View WB Page	View WB on EPA Water Map
33	IE_WE_33G050100	GLENGASSERA_010	River	Mayo County Council	SAC;	High	High	High	High	2021 or earlier	Not at risk			Balderrig GWS	NFGWS, Protection	View WB Page	View WB on EPA Water Map
33	IE_WE_33G060100	GWEEDANEY_010	River	Mayo County Council	SAC; SPA;	Moderate	Good	Good	Good	2021 or earlier	Review					View WB Page	View WB on EPA Water Map
33	IE_WE_33G080500	GLENCASTLE_010	River	Mayo County Council	SAC; SPA;	Good	Good	Moderate	Good	2022-2027	At risk	UnknownImpactType	Unknown			View WB Page	View WB on EPA Water Map
33	IE_WE_33G400250	GLENDARARY_010	River	Mayo County Council	SAC;	Unassigned	Good	Good	Good	2021 or earlier	Review					View WB Page	View WB on EPA Water Map
33	IE_WE_33I010620	IMLEACH BEAG THUAIDH_010	River	Mayo County Council	SAC; SPA;	Unassigned	Unassigned	Moderate	Good	2022-2027	Review			Cross Lake Imleach Beag Thuaiagh	LAWPRO, Restoration	View WB Page	View WB on EPA Water Map
33	IE_WE_33K010200	KEERLEN_010	River	Mayo County Council		High	High	Moderate	High	2022-2027	Review			Ballinglen	LAWPRO, Restoration	View WB Page	View WB on EPA Water Map
33	IE_WE_33K020760	KEEL_EAST_010	River	Mayo County Council	SAC;	Unassigned	Good	Good	Good	2021 or earlier	Review					View WB Page	View WB on EPA Water Map
33	IE_WE_33K030830	KNOCKBOHA_010	River	Mayo County Council	SAC; SPA;	Unassigned	Good	Good	Good	2021 or earlier	Review			Ballinglen	LAWPRO, Restoration	View WB Page	View WB on EPA Water Map
33	IE_WE_33K100650	KILLERDUFF_010	River	Mayo County Council	SAC;	Unassigned	Good	Good	Good	2021 or earlier	Review			Ballinglen	LAWPRO, Restoration	View WB Page	View WB on EPA Water Map
33	IE_WE_33K180130	KILGALLIGAN_010	River	Mayo County Council	SAC; SPA;	Unassigned	Unassigned	Good	Good	2021 or earlier	Review			Cornboy GWS	NFGWS, Protection	View WB Page	View WB on EPA Water Map
33	IE_WE_33M010100	MUING_010	River	Mayo County Council	SAC;	Good	Good	Good	Good	2021 or earlier	Not at risk					View WB Page	View WB on EPA Water Map
33	IE_WE_33M020150	MUINGNABO_010	River	Mayo County Council	SAC; SPA;	Good	Good	Moderate	Good	2022-2027	Review					View WB Page	View WB on EPA Water Map
33	IE_WE_33M030200	MUNHIN_010	River	Mayo County Council	SAC; SPA;	Good	Good	Moderate	Good	2022-2027	At risk	UnknownImpactType	Unknown	Carrowmore Lake	LAWPRO, Restoration	View WB Page	View WB on EPA Water Map
33	IE_WE_33M080640	AN_MULLACH_RUA_010	River	Mayo County Council	SAC; SPA;	Unassigned	Good	Good	Good	2021 or earlier	Review					View WB Page	View WB on EPA Water Map
33	IE_WE_33M090470	MOYRAHAN_010	River	Mayo County Council	SAC; SPA;	Unassigned	High	Good	Good	2021 or earlier	Review					View WB Page	View WB on EPA Water Map
33	IE_WE_33M190620	MUINGNAHALLOONA_010	River	Mayo County Council	SAC; SPA;	Unassigned	Good	Good	Good	2021 or earlier	Review					View WB Page	View WB on EPA Water Map
33	IE_WE_33O010010	OWENDUFF (BLACKSOD)_010	River	Mayo County Council	SAC; SPA;	Good	Good	Good	Good	2021 or earlier	Not at risk					View WB Page	View WB on EPA Water Map
33	IE_WE_33O010030	OWENDUFF (BLACKSOD)_020	River	Mayo County Council	SAC; SPA;	Good	Good	Good	Good	2021 or earlier	Not at risk					View WB Page	View WB on EPA Water Map
33	IE_WE_33O010100	OWENDUFF (BLACKSOD)_030	River	Mayo County Council	SAC; SPA;	Good	Good	Good	Good	2021 or earlier	Not at risk					View WB Page	View WB on EPA Water Map
33	IE_WE_33O040050	OWENMORE (MAYO)_010	River	Mayo County Council	SAC;	Good	High	High	Good	2021 or earlier	Not at risk					View WB Page	View WB on EPA Water Map
33	IE_WE_33O040200	OWENMORE (MAYO)_020	River	Mayo County Council	SAC;	Good	High	High	Good	2021 or earlier	Not at risk					View WB Page	View WB on EPA Water Map
33	IE_WE_33O040250	OWENMORE (MAYO)_030	River	Mayo County Council	SAC; SPA;	High	High	High	High	2021 or earlier	Not at risk					View WB Page	View WB on EPA Water Map
33	IE_WE_33O040270	OWENMORE (MAYO)_040	River	Mayo County Council	SAC; SPA;	High	High	High	High	2021 or earlier	Not at risk					View WB Page	View WB on EPA Water Map
33	IE_WE_33O040325	OWENMORE (MAYO)_050	River	Mayo County Council	SAC; SPA;	Good	Good	Good	Good	2021 or earlier	Not at risk					View WB Page	View WB on EPA Water Map
33	IE_WE_33O040500	OWENMORE (MAYO)_060	River	Mayo County Council	SAC; SPA;	Good	Good	High	Good	2021 or earlier	Not at risk					View WB Page	View WB on EPA Water Map
33	IE_WE_33P020900	PORT_DURLAINNE_010	River	Mayo County Council	SAC;	Unassigned	Good	Good	Good	2021 or earlier	Review					View WB Page	View WB on EPA Water Map
33	IE_WE_33R010800	AN_RĂ"TH_010	River	Mayo County Council	SAC; SPA;	Unassigned	Good	Good	Good	2021 or earlier	Review					View WB Page	View WB on EPA Water Map
33	IE_WE_33R020920	RINN NA SIONNACH_010	River	Mayo County Council	SAC; SPA;	Unassigned	Good	Good	Good	2021 or earlier	Review					View WB Page	View WB on EPA Water Map
33	IE_WE_33S030150	SHEKIN STREAM_010	River	Mayo County Council	SAC;	High	High	High	High	2021 or earlier	Not at risk					View WB Page	View WB on EPA Water Map

33	IE_WE_33S050005	SRAHDUGGAN STREAM_010	River	Mayo County Council	SAC; SPA;	Good	Good	Good	Good	2021 or earlier	Not at risk					View WB Page	View WB on EPA Water Map
33	IE_WE_33T010100	TARSAGHAUNMORE_010	River	Mayo County Council	SAC; SPA;	Good	Good	Good	Good	2021 or earlier	Not at risk					View WB Page	View WB on EPA Water Map
33	IE_WE_33T070130	TRISTIA_010	River	Mayo County Council	SPA;	Unassigned	Good	Good	Good	2021 or earlier	Review					View WB Page	View WB on EPA Water Map
33	IE_WE_33T130850	TULACHÁN DUBH_010	River	Mayo County Council	SPA;	Unassigned	High	Moderate	Good	2022-2027	Review					View WB Page	View WB on EPA Water Map
33	IE_WE_33T210290	TULLAGHAUNNASHAMMER_010	River	Mayo County Council	SAC; SPA;	Unassigned	Unassigned	Good	Good	2021 or earlier	Review					View WB Page	View WB on EPA Water Map
33	IE_WE_33T280770	TULLAGHAN_010	River	Mayo County Council	SPA;	Unassigned	Unassigned	Moderate	Good	2022-2027	Review					View WB Page	View WB on EPA Water Map
33	IE_WE_370_0100	Dooniver Loughs	Transitional	Mayo County Council		Unassigned	Moderate	Good	Good	2021 or earlier	Review					View WB Page	View WB on EPA Water Map
32, 33	IE_WE_390_0100	Tullaghan Bay	Transitional	Mayo County Council	SPA;	High	High	Good	High	2022-2027	Review					View WB Page	View WB on EPA Water Map
33	IE_WE_400_0200	Sruwaddacon Bay	Transitional	Mayo County Council	SAC; SPA;	High	Good	Moderate	High	2022-2027	At risk	UnknownImpactType	Unknown			View WB Page	View WB on EPA Water Map
33	IE_WE_410_0100	Bunatrahir Bay	Transitional	Mayo County Council		Unassigned	Good	Good	Good	2021 or earlier	Not at risk					View WB Page	View WB on EPA Water Map