

Cycle 3

HA 30 Corrib Catchment Report, May 2024

Introduction

Water Quality
Summary

High Status
Objectives

Water Quality
Changes

WFD Risk

Significant
Pressures

Action

Summary
Information

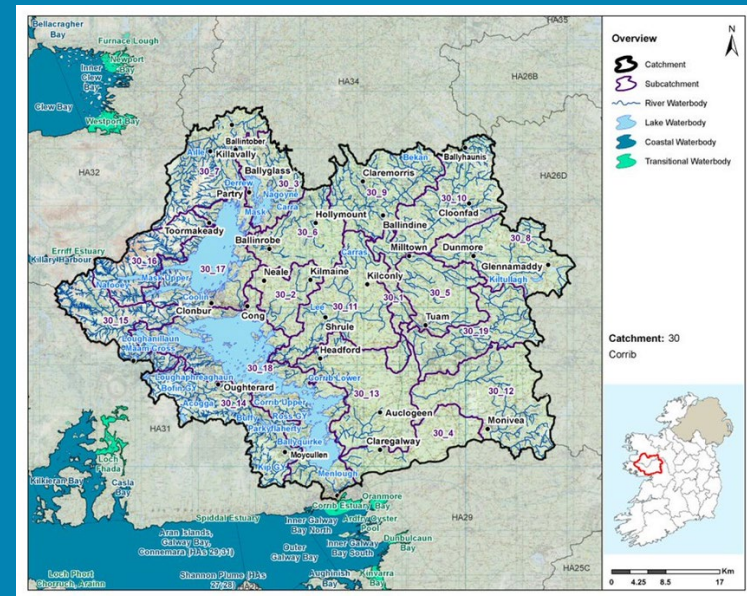
Introduction

This report provides an overview of the water quality in the Corrib Catchment and the pressures impacting on water quality. This report is based on data up to 2021. The latest water quality data, dashboards and maps throughout this report are available on catchments.ie and [EPA Water Map](https://epa.maps.gov.ie).

The Corrib Catchment includes the area drained by the River Corrib and all streams entering tidal water between Renmore Point and Nimmo's Pier, Galway, draining a total area of 3,112km². The largest urban centre in the catchment is Galway City. The other main urban centres in this catchment are Tuam, Ballinrobe, Claremorris and Ballyhaunis.

The Corrib catchment is divided into 19 subcatchments and has 97 river waterbodies, 30 lake waterbodies, one transitional waterbody, no coastal waterbodies and 31 groundwater bodies.

[View the Corrib Catchment
on the EPA Water Map](https://epa.maps.gov.ie)



Overview of Subcatchments in the Corrib Catchment

Previous Catchment Assessments

Previous catchment assessments, which provide additional historic context and information, are archived on catchments.ie:

- [Cycle 2 Catchment Assessments – published September 2018](#)
- [Cycle 3 Draft Catchment Assessments – published September 2021](#)

Online Dashboards

Links to online dashboards are provided in this report – these numbers may vary from those in this document as time progresses and the online dashboards are updated based on the latest data and scientific assessments.

Water Quality Summary

Introduction

Water Quality Summary

High Status Objectives

Water Quality Changes

WFD Risk

Significant Pressures

Action

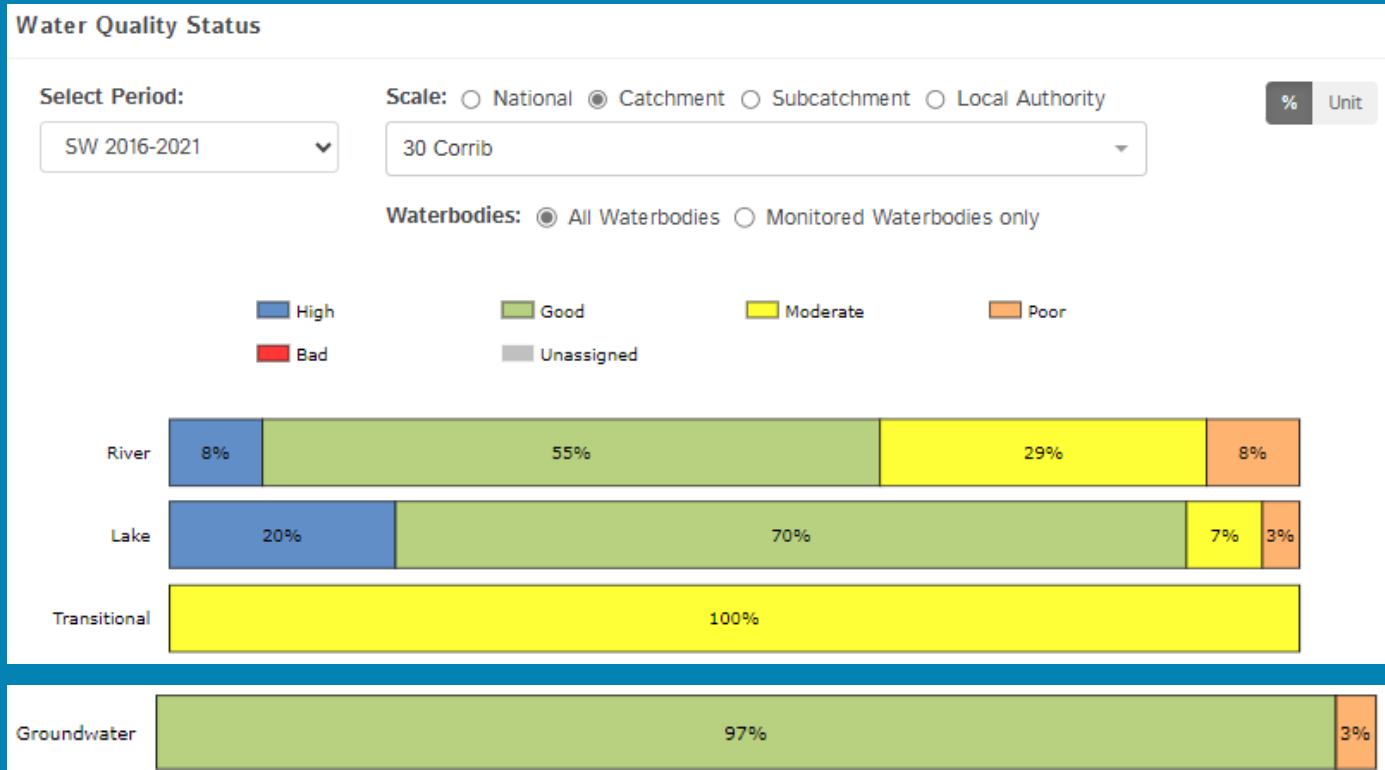
Summary Information

The dashboard below provides a breakdown of water quality status for surface and groundwater bodies in the Corrib Catchment.

A total of 69% of surface waterbodies were at Good or High Ecological Status in the 2016-2021 monitoring period. Ninety-seven percent of groundwater bodies were at Good status.

Go to EPA Water Maps for WFD Status

[EPA Water Map](#)



Water quality status 2016-2021 for the Corrib Catchment. **View Online Dashboard:** <https://www.catchments.ie/data/#/dashboard/waterquality>

High Status Objective Waterbodies

Introduction

High status waters are prioritised for protection and action.

There are 12 waterbodies with a **High Ecological Status Objective** (HSO) in the Corrib Catchment, with seven currently not meeting their environmental objective of High.

Water Quality Summary

Grants for septic tank upgrades may be available in high status objective catchment areas - you can learn more and check your Eircode for eligibility here: <https://www.gov.ie/en/publication/6cc1e-domestic-waste-water-treatment-systems-septic-tanks>

The [EPA Water Map](#) shows the locations of HSO waterbodies. See *Status and Risk / High Status Objectives*.

High Status Objectives

Water Quality Changes

WFD Risk

Significant Pressures

Action

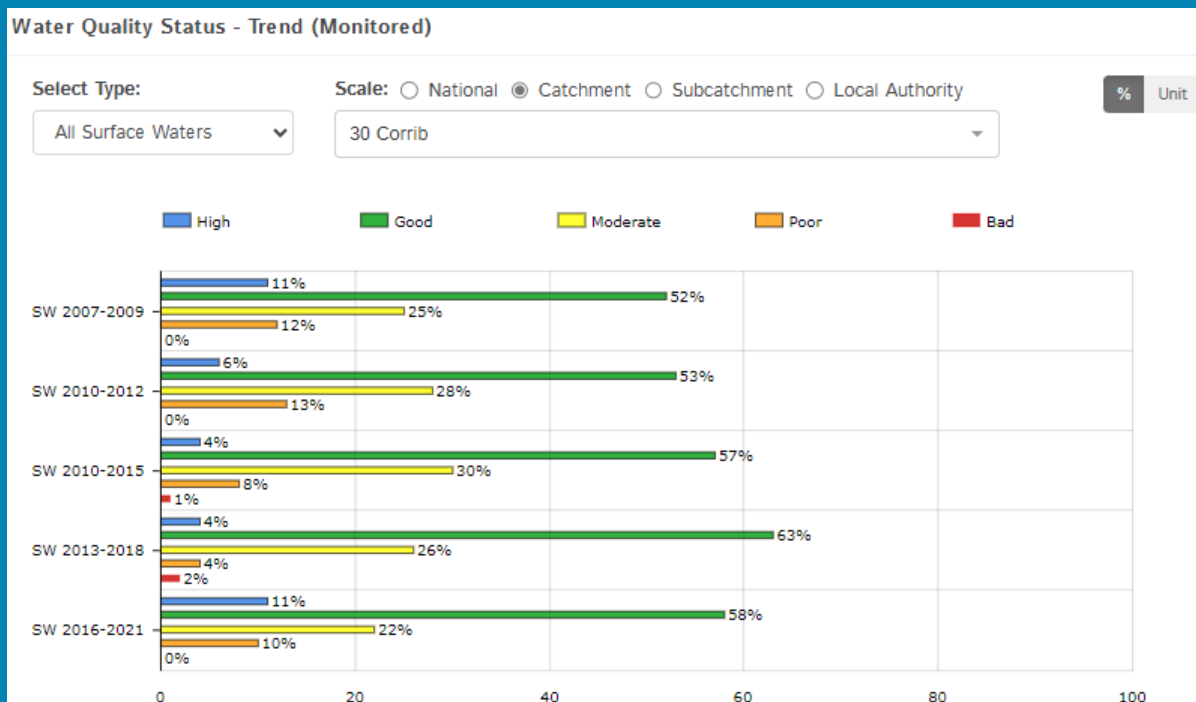
Summary Information

	SW 2007-2009	SW 2010-2012	SW 2010-2015	SW 2013-2018	SW 2016-2021
AILLE (MAYO)_030 (River)	High	Unassigned	Good	Good	Good
Bofin GY (Lake)	High	High	High	High	High
CAMMANAGH_010 (River)	High	High	High	Good	Good
DOOGHTA_020 (River)	Unassigned	Unassigned	High	High	High
FAILMORE_010 (River)	High	Good	Good	High	High
FINNY_010 (River)	High	High	Good	Good	High
GLENGAWBEG_010 (River)	Good	Good	High	Good	Good
Loughanillaun Maam Cross (Lake)	High	Good	Good	Good	Good
Mask (Lake)	High	Good	Good	Good	Good
Maumwee (Lake)	High	High	Good	Good	Good
OWENRIFF (CORRIB)_010 (River)	High	Good	Good	Good	High
OWENRIFF (CORRIB)_020 (River)	Good	Good	Good	Bad	Poor

Water quality status for High Ecological Status Objective waterbodies.
View Online Dashboard: <https://www.catchments.ie/data/#/dashboard/waterquality>

Water Quality Changes

Below illustrates the changes in ecological status in monitored surface waterbodies over the last five monitoring cycles in the Corrib Catchment. Nationally while there have been improvements in some waterbodies, these have been offset by declines elsewhere.



Ecological status trends for monitored surface waterbodies over the last five monitoring cycles in the Corrib Catchment.

View online dashboard: <https://www.catchments.ie/data/#/dashboard/waterquality>

A total of 112 (70%) waterbodies are currently meeting their environmental objective of Good or High Ecological Status.

	Total	Achieving Environmental Objectives (2016-2021)	High Status Environmental Objectives Waterbodies	Achieving High Status Environmental Objectives (2016-2021)
Rivers	97	58 (60%)	8	4 (50%)
Canals	-	-	-	-
Lakes	30	24 (80%)	4	1 (25%)
Transitional	1	0 (0%)	0	0 (0%)
Coastal	-	-	-	-
Groundwater	31	30 (97%)	0	0 (0%)

Introduction

Water Quality Summary

High Status Objectives

Water Quality Changes

WFD Risk

Significant Pressures

Action

Summary Information

WFD Risk

Introduction

Water Quality Summary

High Status Objectives

Water Quality Changes

WFD Risk

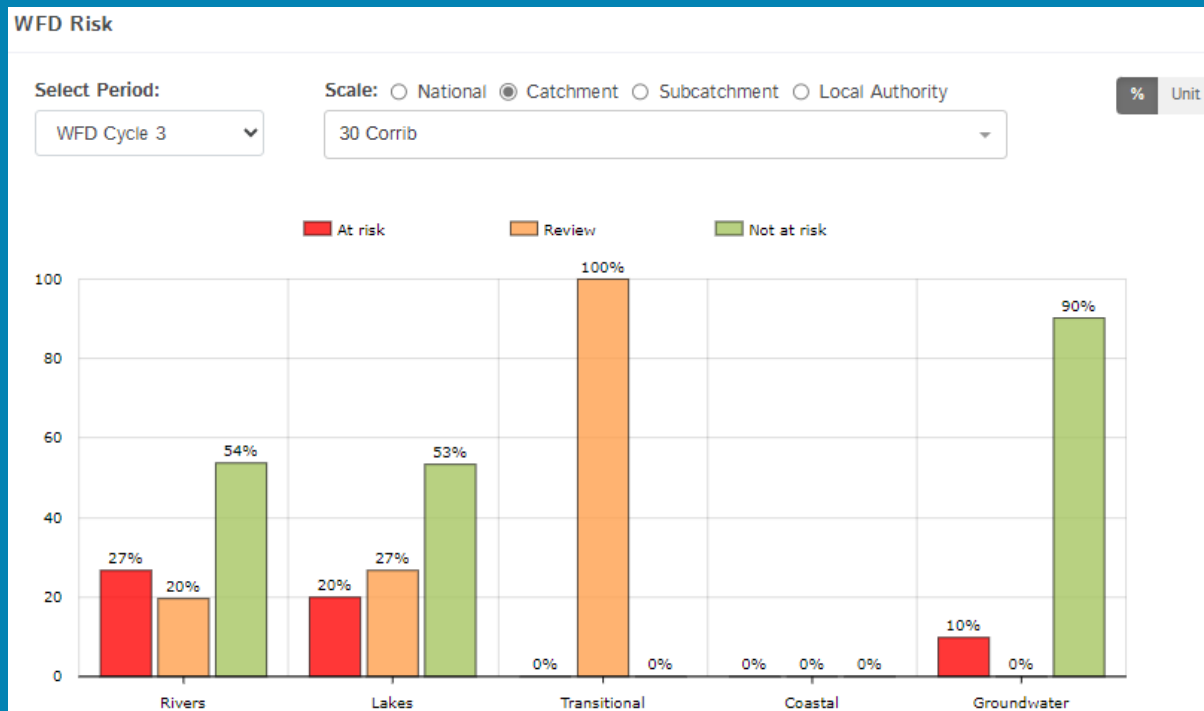
Significant Pressures

Action

Summary Information

A total of 35 (22%) waterbodies are *At Risk* of not meeting their environmental objective in the Corrib Catchment, while 28 (18%) are under *Review* and 96 (60%) are *Not At Risk*.

Go to [EPA Water Map](#) to see WFD Risk for this catchment



WFD Risk for the Corrib Catchment based on 2016-2021 data.

View Online Dashboard: <https://www.catchments.ie/data/#/dashboard/waterquality>

There are currently no heavily modified water bodies (HMWBs) in the Corrib catchment.

There are no artificial waterbodies in the Corrib Catchment.

The [EPA's characterisation outcome report](#) has more information on WFD Risk

Introduction

Water Quality
Summary

High Status
Objectives

Water Quality
Changes

WFD Risk

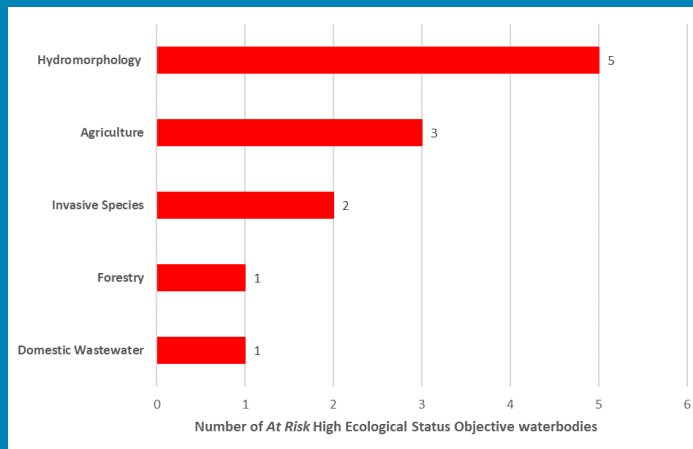
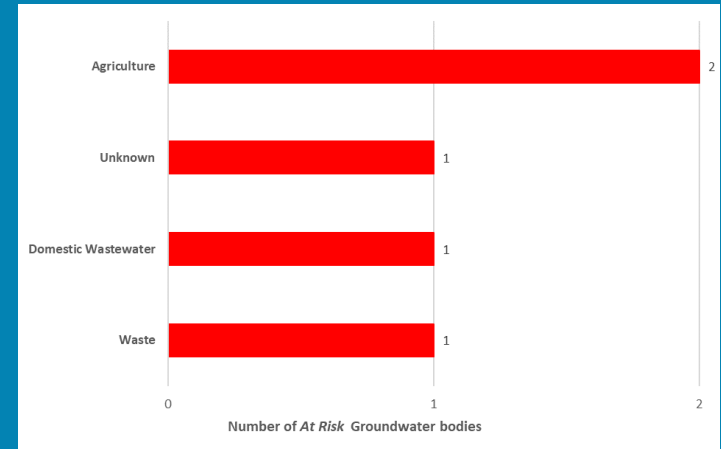
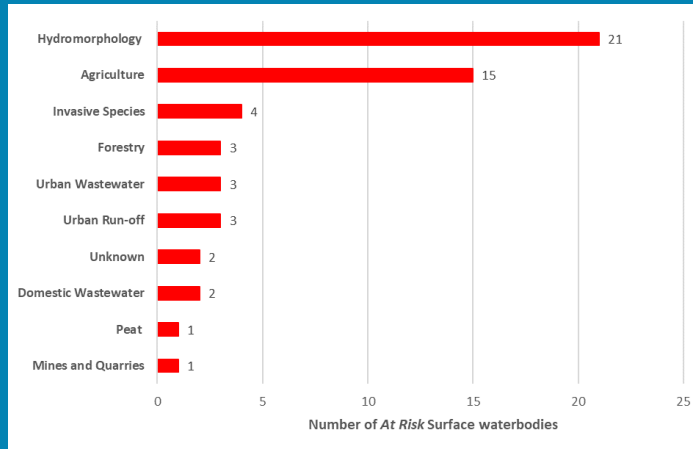
Significant
Pressures

Action

Summary
Information

Significant Pressures driving risk

Significant pressure types impacting the 32 *At Risk* surface waterbodies and three groundwater bodies are broken down in the figures below, including significant pressure information for the seven *At Risk* High Ecological Status Objective waterbodies.



The issues driven by these pressures are mainly altered morphological condition (habitat), nutrient pollution and altered hydrological condition (flow/level) impacts for surface water, and chemical quality diminution for surface water and nutrient pollution for groundwaters. For more information, see <https://www.catchments.ie/data/#/dashboard/pressure?k=i351zs>.

Go to the Summary Information section to get significant pressure and issue data for At Risk waterbodies within the Corrib Catchment.

Click [here](#) for more information on significant pressures

Introduction

Water Quality
Summary

High Status
Objectives

Water Quality
Changes

WFD Risk

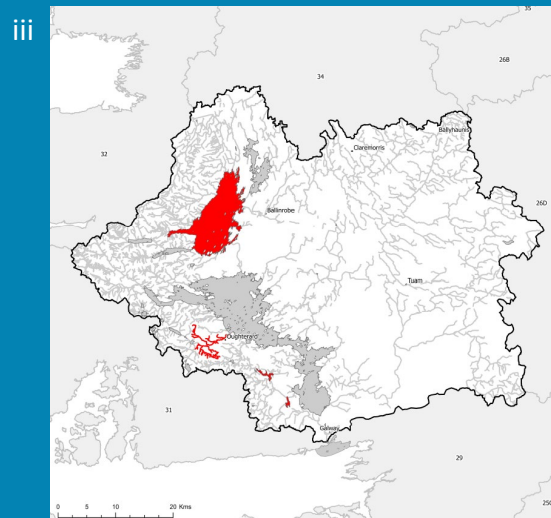
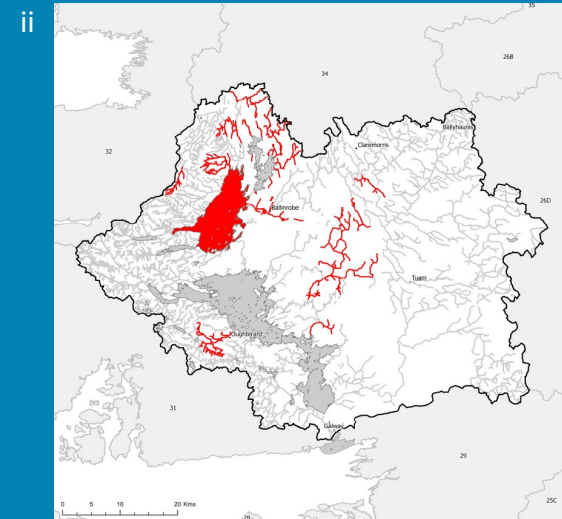
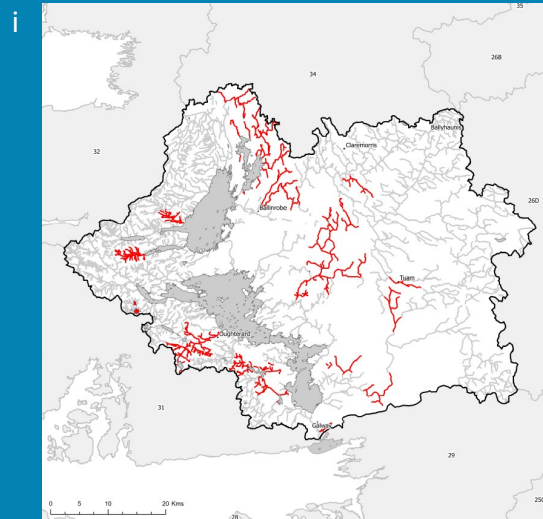
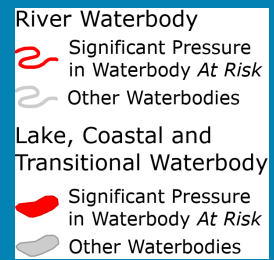
Significant
Pressures

Action

Summary
Information

Significant Pressures

Hydromorphological pressures is the top significant pressure impacting 60% of the 35 At Risk waterbodies within the Corrib Catchment, followed by 49% impacted by agriculture and 11% by invasive species.



The catchments.ie dashboards will show all significant pressures identified for this catchment.

www.catchments.ie/data/#/dashboard/pressure

Go to the [EPA Water Maps](#) for the locations of all significant pressure types identified for this catchment

Locations of At Risk surface waterbodies impacted by i) Hydromorphological Pressures, ii) Agriculture and iii) Invasive Species.

Introduction

Water Quality
Summary

High Status
Objectives

Water Quality
Changes

WFD Risk

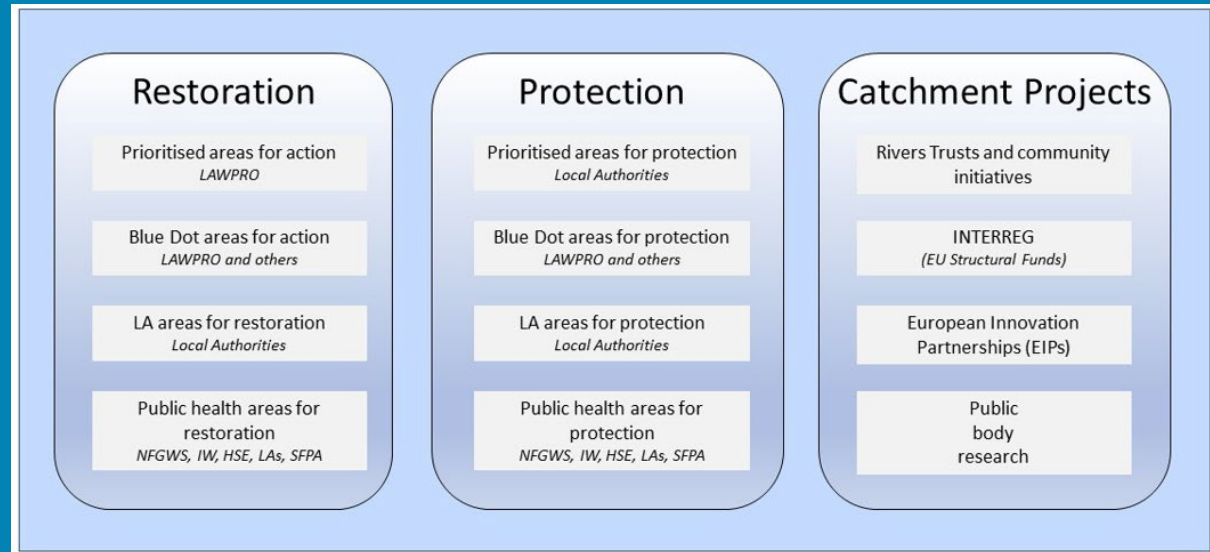
Significant
Pressures

Action

Summary
Information

Priority Areas for Action

A number of waterbodies have been prioritised through the selection of Areas for Action. There were three Priority Areas for Action identified for the second river basin management planning cycle in the Corrib Catchment. This has increased to a total of 10 Areas for Restoration, nine Areas for Protection and three Catchment Projects for the third cycle. ***Go to the summary information section to get Area for Action information for waterbodies within the Corrib Catchment.***



Types of Areas for Action under the third cycle River Basin Management Plan

- View the current progress of Areas for Action and Summary Reports completed by LAWPRO, on [catchments.ie](https://www.catchments.ie) and the EPA Water Map:
 - <https://www.catchments.ie/data/#/areaforaction>
 - https://gis.epa.ie/EPAMaps/default?easting=?&northing=?&lid=EPA:WFD_AreasForAction
- LAWPRO have also published detailed desktop studies on Prioritised Areas for Action (PAAs) which are available their website: <https://lawwaters.ie/desktop-studies/>
- Information on Areas for Action for the second cycle is available in Cycle 2 Catchment Assessments which have been archived on [catchments.ie](https://www.catchments.ie/download/cycle-2-catchment-assessments-published-september-2018/): <https://www.catchments.ie/download/cycle-2-catchment-assessments-published-september-2018/>

Introduction

Water Quality
Summary

High Status
Objectives

Water Quality
Changes

WFD Risk

Significant
Pressures

Action

Summary
Information

Summary information for all waterbodies in the Corrib Catchment

The next page provides a table with a breakdown of key information for all waterbodies in this catchment. The key is provided below. Additional information for each waterbody is available on <https://www.catchments.ie/data>, including a breakdown of status, a monitoring schedule for monitored waterbodies and downloadable chemistry results, where available.

Protected Area categories	BW: Bathing Water DW: Drinking Water Fish: Salmonid Waters NSA: Nutrient Sensitive Areas SAC: Special Area of Conservation, Natura 2000 (water dependent habitats and species) SF: Shellfish Area SPA: Special Area of Protection, Natura 2000 (water dependent habitat and species)
Significant pressure* types categories <i>* For At Risk waterbodies only</i>	Ab: Abstractions Ag: Agriculture Aq: Aquaculture At: Atmospheric DWW: Domestic Wastewater For: Forestry HPS: Historically polluted sites HYMO: Hydromorphology Ind: Industry IS: Invasive Species M+Q: Mines and Quarries Peat: Peat Drainage and Extraction UR: Urban Run-Off UWW: Urban Wastewater Was: Waste WT: Water Treatment

Catchment Code	Waterbody (WB) Code	WB Name	WB Type	Local Authority	Protected Area	Status 10-15	Status 13-18	Status 16-21	Environmental Objective	Environmental Objective Date	WFD Risk 16-21	Significant Issue(s)	Significant Pressure(s)	Area for Action (AFA)	AFA (lead, type)	Link to WB page on catchments.ie	Link to WB on EPA Water Map
26B, 26D, 30	IE_SH_G_053	Castlerea	Groundwater	Roscommon County Council	DWPA; SAC	Good	Good	Good	Good	2021 or earlier	Not at risk					View WB Page	View WB on EPA Water Map
26B, 26D, 30, 34	IE_SH_G_224	Suck North	Groundwater	Roscommon County Council	DWPA; SAC	Good	Good	Good	Good	2021 or earlier	Not at risk					View WB Page	View WB on EPA Water Map
26B, 26C, 26D, 26E, 26G, 29, 30	IE_SH_G_225	Suck South	Groundwater	Galway County Council	DWPA; SAC	Good	Good	Good	Good	2021 or earlier	Not at risk					View WB Page	View WB on EPA Water Map
30, 31, 32	IE_WE_G_0004	Spiddal	Groundwater	Galway County Council	DWPA; SAC	Good	Good	Good	Good	2021 or earlier	Not at risk					View WB Page	View WB on EPA Water Map
26D, 30	IE_WE_G_0005	Dunmore	Groundwater	Galway County Council	DWPA; SAC	Good	Good	Good	Good	2021 or earlier	Not at risk					View WB Page	View WB on EPA Water Map
29, 30, 31, 32	IE_WE_G_0006	Maam-Clonbur	Groundwater	Galway County Council	DWPA; SAC	Good	Good	Good	Good	2021 or earlier	Not at risk					View WB Page	View WB on EPA Water Map
29, 30	IE_WE_G_0007	Loughrea	Groundwater	Galway County Council	DWPA; SAC	Good	Good	Good	Good	2021 or earlier	Not at risk					View WB Page	View WB on EPA Water Map
29, 30	IE_WE_G_0008	Clarinbridge	Groundwater	Galway County Council	DWPA; SAC	Good	Good	Good	Good	2021 or earlier	Not at risk					View WB Page	View WB on EPA Water Map
30, 31	IE_WE_G_0009	Oughterard Marbles	Groundwater	Galway County Council	DWPA; SAC	Good	Good	Good	Good	2021 or earlier	Not at risk					View WB Page	View WB on EPA Water Map
30	IE_WE_G_0010	Ross Lake	Groundwater	Galway County Council	DWPA; SAC	Good	Good	Good	Good	2021 or earlier	Not at risk					View WB Page	View WB on EPA Water Map
30, 31, 32	IE_WE_G_0011	Recess	Groundwater	Galway County Council	DWPA; SAC	Good	Good	Good	Good	2021 or earlier	Not at risk					View WB Page	View WB on EPA Water Map
30, 31, 32	IE_WE_G_0012	Recess Marbles	Groundwater	Galway County Council	DWPA; SAC	Good	Good	Good	Good	2021 or earlier	Not at risk					View WB Page	View WB on EPA Water Map
30, 31	IE_WE_G_0014	Maamturks East Marbles	Groundwater	Galway County Council	DWPA; SAC	Good	Good	Good	Good	2021 or earlier	Not at risk					View WB Page	View WB on EPA Water Map
30, 31, 32	IE_WE_G_0016	Maamturks West Marbles	Groundwater	Galway County Council	DWPA; SAC	Good	Good	Good	Good	2021 or earlier	Not at risk					View WB Page	View WB on EPA Water Map
30, 31, 32, 34	IE_WE_G_0017	Clifden Castlebar	Groundwater	Mayo County Council	DWPA; SAC	Good	Good	Good	Good	2021 or earlier	Not at risk					View WB Page	View WB on EPA Water Map
30, 32	IE_WE_G_0018	Killavally	Groundwater	Mayo County Council	DWPA; SAC	Good	Good	Good	Good	2021 or earlier	Not at risk					View WB Page	View WB on EPA Water Map
30, 34	IE_WE_G_0019	Cong-Robe	Groundwater	Mayo County Council	DWPA; SAC	Good	Good	Good	Good	2021 or earlier	At risk	ChemicalQualityDiminution ForSW, Nutrients	Unknown, Ag			View WB Page	View WB on EPA Water Map
26D, 29, 30, 34	IE_WE_G_0020	Clare-Corrib	Groundwater	Galway County Council	DWPA; SAC	Good	Good	Good	Good	2021 or earlier	Not at risk					View WB Page	View WB on EPA Water Map
30, 32, 34	IE_WE_G_0021	Aghagower	Groundwater	Mayo County Council	DWPA	Good	Good	Good	Good	2021 or earlier	Not at risk					View WB Page	View WB on EPA Water Map
30, 32, 34	IE_WE_G_0022	Ballyhean	Groundwater	Mayo County Council	DWPA; SAC	Good	Good	Good	Good	2021 or earlier	Not at risk					View WB Page	View WB on EPA Water Map
26B, 26D, 30, 32, 34, 35	IE_WE_G_0033	Swinford	Groundwater	Mayo County Council	DWPA; SAC	Good	Good	Good	Good	2021 or earlier	Not at risk					View WB Page	View WB on EPA Water Map
26B, 30, 34	IE_WE_G_0063	Corrib Gravels	Groundwater	Mayo County Council	DWPA; SAC	Good	Good	Good	Good	2021 or earlier	Not at risk					View WB Page	View WB on EPA Water Map
30	IE_WE_G_0084	Waste Facility (W0013-01)	Groundwater	Galway County Council	DWPA; SAC	Poor	Poor	Poor	Good	2022-2027	At risk	ChemicalQualityDiminution ForSW, Nutrients	Was			View WB Page	View WB on EPA Water Map
26D, 30	IE_WE_G_0094	GWDTE-Glenamaddy Turlough (SAC000301)	Groundwater	Galway County Council	DWPA; SAC (GWDTE)	Good	Good	Good	Good	2021 or earlier	Not at risk					View WB Page	View WB on EPA Water Map
25C, 26D, 29, 30	IE_WE_G_0100	GWDTE-Rahasane Turlough (SAC000322)	Groundwater	Galway County Council	DWPA; SAC (GWDTE)	Good	Good	Good	Good	2021 or earlier	At risk	ChemicalQualityDiminution ForSW, Nutrients	DWTS, Ag			View WB Page	View WB on EPA Water Map
30	IE_WE_G_0102	GWDTE-Shrulle Turlough (SAC000525)	Groundwater	Mayo County Council	DWPA; SAC (GWDTE)	Good	Good	Good	Good	2021 or earlier	Not at risk					View WB Page	View WB on EPA Water Map
30	IE_WE_G_0103	GWDTE-Skealoughan Turlough (SAC000541)	Groundwater	Mayo County Council	DWPA; SAC (GWDTE)	Good	Good	Good	Good	2021 or earlier	Not at risk					View WB Page	View WB on EPA Water Map
29, 30	IE_WE_G_0106	GWDTE-Lough Corrib Fens 3 & 4 (SAC000297)	Groundwater	Galway County Council	DWPA; SAC (GWDTE)	Good	Good	Good	Good	2021 or earlier	Not at risk					View WB Page	View WB on EPA Water Map
30, 31	IE_WE_G_0109	GWDTE-Lough Corrib Fen 2 (SAC000297)	Groundwater	Galway County Council	DWPA; SAC (GWDTE)	Good	Good	Good	Good	2021 or earlier	Not at risk					View WB Page	View WB on EPA Water Map
30	IE_WE_G_0114	Dunmore Gravels	Groundwater	Galway County Council	DWPA; SAC	Good	Good	Good	Good	2021 or earlier	Not at risk					View WB Page	View WB on EPA Water Map
30	IE_WE_G_0119	GWDTE-Lough Corrib Fen 1 (Menlough) (SAC000297)	Groundwater	Galway City Council	DWPA; SAC (GWDTE)	Good	Good	Good	Good	2021 or earlier	Not at risk					View WB Page	View WB on EPA Water Map
30	IE_WE_30_215	Adrehid	Lake	Galway County Council	SAC;	Unassigned	Good	Good	Good	2021 or earlier	Not at risk			Owenriff (Oughterard)	LAWPRO, Restoration	View WB Page	View WB on EPA Water Map
30	IE_WE_30_250	Derrew	Lake	Mayo County Council	SAC;	Unassigned	Unassigned	Good	Good	2021 or earlier	Not at risk					View WB Page	View WB on EPA Water Map
30	IE_WE_30_260	Nagoyne	Lake	Mayo County Council	SAC;	Unassigned	Unassigned	Good	Good	2021 or earlier	Not at risk					View WB Page	View WB on EPA Water Map
30	IE_WE_30_290	Menlough	Lake	Galway City Council	SAC;	Unassigned	Unassigned	Good	Good	2021 or earlier	Not at risk					View WB Page	View WB on EPA Water Map
30	IE_WE_30_301	Carras	Lake	Mayo County Council		Unassigned	Unassigned	Good	Good	2021 or earlier	Not at risk					View WB Page	View WB on EPA Water Map
30	IE_WE_30_303	Kip GY	Lake	Galway County Council	SAC;	Unassigned	Good	Good	Good	2021 or earlier	Not at risk					View WB Page	View WB on EPA Water Map
30	IE_WE_30_308	Kiltullagh	Lake	Galway County Council		Unassigned	High	Good	Good	2021 or earlier	Review			Sinking and Upper Clare (Galway)	LAWPRO, Restoration	View WB Page	View WB on EPA Water Map

30	IE_WE_30_313	Loughanieran Maam Cross	Lake	Galway County Council		Unassigned	Good	High	Good	2021 or earlier	Review			Failmore	LAWPRO, Restoration	View WB Page	View WB on EPA Water Map
30	IE_WE_30_315	Buffy	Lake	Galway County Council		Unassigned	Moderate	Good	Good	2021 or earlier	Review			Owenriff (Oughterard)	LAWPRO, Restoration	View WB Page	View WB on EPA Water Map
30	IE_WE_30_322	Lee	Lake	Mayo County Council		Unassigned	Unassigned	High	Good	2021 or earlier	Not at risk					View WB Page	View WB on EPA Water Map
30	IE_WE_30_325	Acogga	Lake	Galway County Council	SAC;	Unassigned	Good	Good	Good	2021 or earlier	Review			Owenriff (Oughterard)	LAWPRO, Restoration	View WB Page	View WB on EPA Water Map
30	IE_WE_30_326	Shannagrena	Lake	Galway County Council	SAC;	Unassigned	High	High	Good	2021 or earlier	Review			Failmore	LAWPRO, Restoration	View WB Page	View WB on EPA Water Map
30	IE_WE_30_332	Coolin	Lake	Galway County Council	DWPA;	Unassigned	High	Good	Good	2021 or earlier	Not at risk					View WB Page	View WB on EPA Water Map
30	IE_WE_30_334	Agraffard	Lake	Galway County Council	SAC;	Unassigned	Good	Good	Good	2021 or earlier	Not at risk					View WB Page	View WB on EPA Water Map
30	IE_WE_30_335	Bofin GY	Lake	Galway County Council	SAC;	High	High	High	High	2021 or earlier	Not at risk			Owenriff (Oughterard)	LAWPRO, Restoration	View WB Page	View WB on EPA Water Map
30	IE_WE_30_336	Parkylaherty	Lake	Galway County Council	SAC;	Unassigned	High	Good	Good	2021 or earlier	Review			Owenriff (Oughterard)	LAWPRO, Restoration	View WB Page	View WB on EPA Water Map
30	IE_WE_30_340	Ballyquirke	Lake	Galway County Council	SAC;	Moderate	Bad	Moderate	Good	2022-2027	At risk	Nutrients, OtherSignificantImpacts	IS, UWW	Owenriff (Oughterard)	LAWPRO, Restoration	View WB Page	View WB on EPA Water Map
30	IE_WE_30_341	Bekan	Lake	Mayo County Council		Unassigned	Unassigned	Good	Good	2021 or earlier	Review					View WB Page	View WB on EPA Water Map
30	IE_WE_30_342	Nafoeoy	Lake	Galway County Council		Unassigned	Good	High	Good	2021 or earlier	Not at risk					View WB Page	View WB on EPA Water Map
30	IE_WE_30_343	Maumwee	Lake	Galway County Council	SAC;	Good	Good	Good	High	2022-2027	At risk	Morphological	HYMO	Failmore	LAWPRO, Restoration	View WB Page	View WB on EPA Water Map
30	IE_WE_30_344	Lettercraffroe	Lake	Galway County Council	SAC;	Moderate	Good	Good	Good	2021 or earlier	Review			Owenriff (Oughterard)	LAWPRO, Restoration	View WB Page	View WB on EPA Water Map
30	IE_WE_30_345	Ross GY	Lake	Galway County Council	SAC;	Poor	Poor	Poor	Good	2022-2027	At risk	UnknownImpactType	IS	Owenriff (Oughterard)	LAWPRO, Restoration	View WB Page	View WB on EPA Water Map
30	IE_WE_30_346	Loughaphreaghaun	Lake	Galway County Council	SAC;	Unassigned	High	Good	Good	2021 or earlier	Not at risk			Owenriff (Oughterard)	LAWPRO, Restoration	View WB Page	View WB on EPA Water Map
30	IE_WE_30_347	Carra	Lake	Mayo County Council	SAC; SPA;	Good	Good	Good	Good	2021 or earlier	Not at risk			Lough Mask and Lough Carra	LAWPRO, Restoration	View WB Page	View WB on EPA Water Map
30	IE_WE_30_348	Loughanillaun Maam Cross	Lake	Galway County Council	SAC;	Good	Good	Good	High	2022-2027	At risk	Morphological	HYMO	Failmore	LAWPRO, Restoration	View WB Page	View WB on EPA Water Map
30	IE_WE_30_532	Aille	Lake	Mayo County Council		Good	Good	Moderate	Good	2022-2027	At risk	Nutrients	Ag	Lough Mask and Lough Carra	LAWPRO, Restoration	View WB Page	View WB on EPA Water Map
30	IE_WE_30_665a	Mask	Lake	Mayo County Council	DWPA; SAC; SPA;	Good	Good	Good	High	2022-2027	At risk	Nutrients	Ag, DWTS, IS	Lough Mask and Lough Carra	LAWPRO, Restoration	View WB Page	View WB on EPA Water Map
30	IE_WE_30_665b	Mask Upper	Lake	Galway County Council	SAC; SPA;	Good	High	High	Good	2021 or earlier	Not at risk					View WB Page	View WB on EPA Water Map
30	IE_WE_30_666a	Corrib Lower	Lake	Galway County Council	DWPA; SAC; SPA;	Moderate	Good	Good	Good	2021 or earlier	Not at risk					View WB Page	View WB on EPA Water Map
30	IE_WE_30_666b	Corrib Upper	Lake	Galway County Council	DWPA; SAC; SPA;	Good	Good	Good	Good	2021 or earlier	Not at risk					View WB Page	View WB on EPA Water Map
30	IE_WE_30A010028	ABBERT_010	River	Galway County Council		Good	Moderate	Good	Good	2021 or earlier	Not at risk					View WB Page	View WB on EPA Water Map
30	IE_WE_30A010100	ABBERT_020	River	Galway County Council	SAC;	Good	Good	Good	Good	2021 or earlier	Not at risk					View WB Page	View WB on EPA Water Map
30	IE_WE_30A010300	ABBERT_030	River	Galway County Council	SAC;	Moderate	Good	Good	Good	2021 or earlier	Not at risk			Coolourty Brierfield GWS. Brierfield and District GWS	LAWPRO, Protection	View WB Page	View WB on EPA Water Map
30	IE_WE_30A010500	ABBERT_040	River	Galway County Council	SAC;	Moderate	Moderate	Good	Good	2021 or earlier	Not at risk					View WB Page	View WB on EPA Water Map
30	IE_WE_30A020010	AILLE (MAYO)_010	River	Mayo County Council	SAC;	Moderate	Moderate	Moderate	Good	2022-2027	At risk	Chemical, UnknownImpactType	Unknown, Ag	Lough Mask and Lough Carra	LAWPRO, Restoration	View WB Page	View WB on EPA Water Map
30	IE_WE_30A020100	AILLE (MAYO)_020	River	Mayo County Council	SAC;	Good	Good	Good	Good	2021 or earlier	Not at risk			Lough Mask and Lough Carra	LAWPRO, Restoration	View WB Page	View WB on EPA Water Map
30	IE_WE_30A020250	AILLE (MAYO)_030	River	Mayo County Council		Good	Good	Good	High	2022-2027	At risk	Hydrological, Morphological	Ag, For	Lough Mask and Lough Carra	LAWPRO, Restoration	View WB Page	View WB on EPA Water Map
30	IE_WE_30A020400	AILLE (MAYO)_040	River	Mayo County Council	SAC; SPA;	Good	Good	Good	Good	2021 or earlier	Not at risk			Lough Mask and Lough Carra	LAWPRO, Restoration	View WB Page	View WB on EPA Water Map
30	IE_WE_30A030100	AGHINISH_010	River	Mayo County Council	SAC; SPA;	Moderate	Moderate	Moderate	Good	2022-2027	At risk	Hydrological, Morphological, Organic	Ag, HYMO	Lough Mask and Lough Carra	LAWPRO, Restoration	View WB Page	View WB on EPA Water Map
30	IE_WE_30A340980	ANNIES_010	River	Mayo County Council	SAC; SPA;	Unassigned	Moderate	Moderate	Good	2022-2027	At risk	Sediment, Hydrological, Morphological, Nutrients	Ag, HYMO	Lough Mask and Lough Carra	LAWPRO, Restoration	View WB Page	View WB on EPA Water Map
30	IE_WE_30B010050	BEALANABRACK_010	River	Galway County Council	SAC;	Good	Good	High	Good	2021 or earlier	Not at risk					View WB Page	View WB on EPA Water Map
30	IE_WE_30B010200	BEALANABRACK_020	River	Galway County Council	SAC; SPA;	Good	Good	Good	Good	2021 or earlier	Not at risk					View WB Page	View WB on EPA Water Map
30	IE_WE_30B020200	BLACK (SHRULE)_010	River	Galway County Council	SAC;	Good	Good	Poor	Good	2022-2027	At risk	Sediment, Morphological, Nutrients	HYMO, Ag, Peat	Belmont GWS	NFGWS, Protection	View WB Page	View WB on EPA Water Map
30	IE_WE_30B020300	BLACK (SHRULE)_020	River	Mayo County Council	SAC;	Moderate	Good	Moderate	Good	2022-2027	At risk	Sediment, Morphological, Nutrients	DWTS, Ag, HYMO			View WB Page	View WB on EPA Water Map
30	IE_WE_30B020600	BLACK (SHRULE)_030	River	Galway County Council	SAC; SPA;	Good	Good	Good	Good	2021 or earlier	Not at risk					View WB Page	View WB on EPA Water Map
30	IE_WE_30B030200	BALLINDINE_010	River	Mayo County Council		Poor	Poor	Poor	Good	2022-2027	At risk	Hydrological, Morphological, Nutrients, Organic	UWW, Ag, HYMO, For	Lough Mask and Lough Carra	LAWPRO, Restoration	View WB Page	View WB on EPA Water Map
30	IE_WE_30B040300	BEAGH BEG_010	River	Galway County Council		Unassigned	Good	Moderate	Good	2022-2027	Review					View WB Page	View WB on EPA Water Map

30	IE_WE_30B050100	BALLINDUFF STREAM_010	River	Galway County Council	DWPA; SAC; SPA;	Unassigned	Good	Good	Good	2021 or earlier	Not at risk			Cluide and Cahermorris GWS. Cahermorris and Glenrevagh GWS. Balroebugbeg GWS.	NFGWS, Protection	View WB Page	View WB on EPA Water Map
30	IE_WE_30B140100	BALLYCURKE_010	River	Galway County Council	SAC; SPA;	Poor	Moderate	Moderate	Good	2022-2027	At risk	Oxygetion, Morphological, Nutrients, Organic	UR, HYMO	Owenriff (Oughterard)	LAWPRO, Restoration	View WB Page	View WB on EPA Water Map
30	IE_WE_30B870900	BOADAUN_010	River	Galway County Council		Unassigned	Good	Moderate	Good	2022-2027	Review			Rusheens GWS. Claretum GWS. Belclare GWS.	NFGWS, Protection	View WB Page	View WB on EPA Water Map
30	IE_WE_30C010100	CLARE (GALWAY)_010	River	Galway County Council	SAC;	Moderate	Moderate	Good	Good	2021 or earlier	Not at risk			Sinking and Upper Clare (Galway)	LAWPRO, Restoration	View WB Page	View WB on EPA Water Map
30	IE_WE_30C010300	CLARE (GALWAY)_020	River	Galway County Council	DWPA; SAC;	Unassigned	Good	Good	Good	2021 or earlier	Not at risk			Sinking and Upper Clare (Galway)	LAWPRO, Restoration	View WB Page	View WB on EPA Water Map
30	IE_WE_30C010500	CLARE (GALWAY)_030	River	Galway County Council	SAC;	Good	Good	Good	Good	2021 or earlier	Not at risk					View WB Page	View WB on EPA Water Map
30	IE_WE_30C010670	CLARE (GALWAY)_040	River	Galway County Council	SAC;	Good	Good	Good	Good	2021 or earlier	Not at risk					View WB Page	View WB on EPA Water Map
30	IE_WE_30C010700	CLARE (GALWAY)_050	River	Galway County Council	SAC;	Good	Good	Moderate	Good	2022-2027	Review			Caherlea Gurrane GWS	NFGWS, Protection	View WB Page	View WB on EPA Water Map
30	IE_WE_30C010800	CLARE (GALWAY)_060	River	Galway County Council	SAC;	Moderate	Moderate	Poor	Good	2022-2027	At risk	Morphological	HYMO	Clough Cumber GWS	NFGWS, Restoration	View WB Page	View WB on EPA Water Map
30	IE_WE_30C011000	CLARE (GALWAY)_070	River	Galway County Council	SAC;	Good	Good	Good	Good	2021 or earlier	Not at risk			Anbally GWS Carheenlea GWS. Currandrum GWS	NFGWS, Protection	View WB Page	View WB on EPA Water Map
30	IE_WE_30C011100	CLARE (GALWAY)_080	River	Galway County Council	SAC;	Moderate	Moderate	Moderate	Good	2022-2027	At risk	Hydrological, Morphological	HYMO	Carheenlea GWS	NFGWS, Restoration	View WB Page	View WB on EPA Water Map
30	IE_WE_30C011200	CLARE (GALWAY)_090	River	Galway County Council	SAC;	Moderate	Moderate	Moderate	Good	2022-2027	At risk	Hydrological, Morphological	HYMO			View WB Page	View WB on EPA Water Map
30	IE_WE_30C011300	CLARE (GALWAY)_100	River	Galway County Council	SAC; SPA;	Unassigned	Moderate	Moderate	Good	2022-2027	Review					View WB Page	View WB on EPA Water Map
30	IE_WE_30C020300	CORRIB_010	River	Galway County Council	SAC; Fish; SPA;	Unassigned	Unassigned	Good	Good	2021 or earlier	Not at risk			Kilcoona GWS	NFGWS, Protection	View WB Page	View WB on EPA Water Map
30	IE_WE_30C020600	CORRIB_020	River	Galway City Council	DWPA; SAC; Fish; SPA;	Good	Good	Good	Good	2021 or earlier	Not at risk			Corrib	Galway City Council, Protection	View WB Page	View WB on EPA Water Map
30	IE_WE_30C030150	CREGG_010	River	Galway County Council		Moderate	Moderate	Poor	Good	2022-2027	At risk	Morphological	HYMO	Cregg River and Headford Stream	LAWPRO, Restoration	View WB Page	View WB on EPA Water Map
30	IE_WE_30C030200	CREGG_020	River	Galway County Council	SAC; SPA;	Unassigned	Moderate	Moderate	Good	2022-2027	Review			Cregg River and Headford Stream	LAWPRO, Restoration	View WB Page	View WB on EPA Water Map
30	IE_WE_30C040100	CAMMANAGH_010	River	Galway County Council	SAC; SPA;	High	Good	Good	High	2022-2027	At risk	Morphological	HYMO	Lough Mask and Lough Carra	LAWPRO, Restoration	View WB Page	View WB on EPA Water Map
30	IE_WE_30C050100	CLOGHBRACK STREAM_010	River	Galway County Council	SAC; SPA;	Unassigned	Good	Good	Good	2021 or earlier	Not at risk					View WB Page	View WB on EPA Water Map
30	IE_WE_30C060300	CONG CANAL_010	River	Mayo County Council	SAC; SPA;	Good	Good	Good	Good	2021 or earlier	Not at risk					View WB Page	View WB on EPA Water Map
30	IE_WE_30C070900	CNOCNAGUR_30_010	River	Galway County Council	SAC;	Unassigned	Good	Moderate	Good	2022-2027	Review					View WB Page	View WB on EPA Water Map
30	IE_WE_30C090100	CLOONDAVER STREAM (NORTH)_010	River	Mayo County Council		Moderate	Good	Moderate	Good	2022-2027	At risk	Sediment, Hydrological, Morphological, Nutrients	Ag, HYMO	Lough Mask and Lough Carra	LAWPRO, Restoration	View WB Page	View WB on EPA Water Map
30	IE_WE_30C110300	CLOONFAD_010	River	Roscommon County Council	SAC;	Good	Good	Good	Good	2021 or earlier	Not at risk					View WB Page	View WB on EPA Water Map
30	IE_WE_30C120400	CLAUREEN (MAYO)_010	River	Mayo County Council		Poor	Poor	Poor	Good	2022-2027	At risk	Hydrological, Morphological, Nutrients	Ag, HYMO, M+Q	Lough Mask and Lough Carra	LAWPRO, Restoration	View WB Page	View WB on EPA Water Map
30	IE_WE_30C120700	CLAUREEN (MAYO)_020	River	Mayo County Council		Moderate	Moderate	Good	Good	2021 or earlier	Review			Lough Mask and Lough Carra	LAWPRO, Restoration	View WB Page	View WB on EPA Water Map
30	IE_WE_30D010200	DALGAN_010	River	Mayo County Council	DWPA;	Poor	Poor	Poor	Good	2022-2027	At risk	Organic	UR, UWW	Dalغان	LAWPRO, Restoration	View WB Page	View WB on EPA Water Map
30	IE_WE_30D010300	DALGAN_020	River	Mayo County Council		Good	Good	Good	Good	2021 or earlier	Not at risk					View WB Page	View WB on EPA Water Map
30	IE_WE_30D010400	DALGAN_030	River	Mayo County Council	SAC;	Good	Good	Good	Good	2021 or earlier	Not at risk					View WB Page	View WB on EPA Water Map
30	IE_WE_30D010500	DALGAN_040	River	Mayo County Council	SAC;	Good	Good	Good	Good	2021 or earlier	Not at risk					View WB Page	View WB on EPA Water Map
30	IE_WE_30D010600	DALGAN_050	River	Mayo County Council	SAC;	Good	Good	Good	Good	2021 or earlier	Not at risk					View WB Page	View WB on EPA Water Map
30	IE_WE_30D020100	DOOGHTA_010	River	Galway County Council	SAC;	Good	Good	High	Good	2021 or earlier	Not at risk					View WB Page	View WB on EPA Water Map
30	IE_WE_30D020200	DOOGHTA_020	River	Galway County Council	SAC;	High	High	High	High	2021 or earlier	Not at risk					View WB Page	View WB on EPA Water Map
30	IE_WE_30D030600	DRIMNEEN_010	River	Galway County Council	DWPA; SAC; SPA;	Unassigned	Good	Good	Good	2021 or earlier	Not at risk					View WB Page	View WB on EPA Water Map
30	IE_WE_30F010100	FAILMORE_010	River	Galway County Council	SAC;	Good	High	High	High	2021 or earlier	Not at risk					View WB Page	View WB on EPA Water Map
30	IE_WE_30F020100	FOOEY_010	River	Galway County Council		Good	Good	Good	Good	2021 or earlier	Not at risk			Lough Mask and Lough Carra	LAWPRO, Restoration	View WB Page	View WB on EPA Water Map
30	IE_WE_30F030100	FINNY_010	River	Galway County Council	SAC; SPA;	Good	Good	High	High	2021 or earlier	Not at risk			Lough Mask and Lough Carra	LAWPRO, Restoration	View WB Page	View WB on EPA Water Map
30	IE_WE_30F170810	FEAGH_EAST_010	River	Galway County Council		Unassigned	Good	Moderate	Good	2022-2027	Review			Feigh East and West GWS	LAWPRO, Protection	View WB Page	View WB on EPA Water Map
30	IE_WE_30G010250	GLENSAUL_010	River	Mayo County Council	SAC; SPA;	Poor	Moderate	Moderate	Good	2022-2027	Review			Lough Mask and Lough Carra	LAWPRO, Restoration	View WB Page	View WB on EPA Water Map
30	IE_WE_30G020200	GRANGE (GALWAY)_010	River	Galway County Council	SAC;	Good	Good	Good	Good	2021 or earlier	Not at risk					View WB Page	View WB on EPA Water Map
30	IE_WE_30G020400	GRANGE (GALWAY)_020	River	Galway County Council	SAC;	Good	Moderate	Good	Good	2021 or earlier	Not at risk					View WB Page	View WB on EPA Water Map

30	IE_WE_30G020500	GRANGE (GALWAY)_030	River	Galway County Council	SAC;	Good	Good	Good	Good	2021 or earlier	Not at risk					View WB Page	View WB on EPA Water Map
30	IE_WE_30G020700	GRANGE (GALWAY)_040	River	Galway County Council	SAC;	Good	Good	Good	Good	2021 or earlier	Not at risk					View WB Page	View WB on EPA Water Map
30	IE_WE_30G040015	GLENNAMUCKA STREAM_010	River	Galway County Council	SAC;	Good	Good	Good	Good	2021 or earlier	Not at risk					View WB Page	View WB on EPA Water Map
30	IE_WE_30G050025	GORTGARROW STREAM_010	River	Galway County Council	SAC;	Moderate	Moderate	Moderate	Good	2022-2027	At risk	UnknownImpactType	Unknown	Sinking and Upper Clare (Galway)	LAWPRO, Restoration	View WB Page	View WB on EPA Water Map
30	IE_WE_30G060100	GLENGAWBEG_010	River	Galway County Council	SAC;	High	Good	Good	High	2022-2027	At risk	Morphological	HYMO	Owenriff (Oughterard)	LAWPRO, Restoration	View WB Page	View WB on EPA Water Map
30	IE_WE_30H010200	HEADFORD STREAM_010	River	Galway County Council		Unassigned	High	Moderate	Good	2022-2027	Review			Cregg River and Headford Stream	LAWPRO, Restoration	View WB Page	View WB on EPA Water Map
30	IE_WE_30H010300	HEADFORD STREAM_020	River	Galway County Council	SAC; SPA;	Good	Moderate	Moderate	Good	2022-2027	At risk	Nutrients	Ag	Cregg River and Headford Stream	LAWPRO, Restoration	View WB Page	View WB on EPA Water Map
30	IE_WE_30J010100	JOYCE'S_010	River	Galway County Council	SAC;	Good	Good	Good	Good	2021 or earlier	Not at risk					View WB Page	View WB on EPA Water Map
30	IE_WE_30K010220	KILMAINE_010	River	Mayo County Council		Unassigned	Good	Moderate	Good	2022-2027	Review					View WB Page	View WB on EPA Water Map
30	IE_WE_30K010300	KILMAINE_020	River	Mayo County Council	SAC;	Unassigned	Good	Good	Good	2021 or earlier	Review					View WB Page	View WB on EPA Water Map
30	IE_WE_30K020200	KNOCKAUNRANNY STREAM_010	River	Galway County Council	SAC;	Good	Good	Good	Good	2021 or earlier	Not at risk			Owenriff (Oughterard)	LAWPRO, Restoration	View WB Page	View WB on EPA Water Map
30	IE_WE_30K220930	KNOCKNAGEEHA_010	River	Mayo County Council	SAC; SPA;	Unassigned	Good	Moderate	Good	2022-2027	Review					View WB Page	View WB on EPA Water Map
30	IE_WE_30L010200	LOUGHKIP_010	River	Galway County Council	SAC;	Good	Good	Good	Good	2021 or earlier	Not at risk			Owenriff (Oughterard)	LAWPRO, Restoration	View WB Page	View WB on EPA Water Map
30	IE_WE_30L030400	LOUGH NACORRALEA STREAM_010	River	Mayo County Council		Moderate	Good	High	Good	2021 or earlier	Not at risk			Lough Mask and Lough Carra	LAWPRO, Restoration	View WB Page	View WB on EPA Water Map
30	IE_WE_30L070100	LEVALLY STREAM_010	River	Galway County Council	SAC;	Moderate	Good	Good	Good	2021 or earlier	Not at risk					View WB Page	View WB on EPA Water Map
30	IE_WE_30M330920	MOCORHA_010	River	Mayo County Council	SAC;	Unassigned	Good	Good	Good	2021 or earlier	Not at risk					View WB Page	View WB on EPA Water Map
30	IE_WE_30N010050	NANNY (TUAM)_010	River	Galway County Council		Unassigned	Good	Moderate	Good	2022-2027	Review			Nanny Galway	LAWPRO, Restoration	View WB Page	View WB on EPA Water Map
30	IE_WE_30N010100	NANNY (TUAM)_020	River	Galway County Council		Good	Good	Moderate	Good	2022-2027	Review			Nanny Galway	LAWPRO, Restoration	View WB Page	View WB on EPA Water Map
30	IE_WE_30N010300	NANNY (TUAM)_030	River	Galway County Council	SAC;	Moderate	Moderate	Poor	Good	2022-2027	At risk	Hydrological, Morphological	HYMO	Nanny Galway	LAWPRO, Restoration	View WB Page	View WB on EPA Water Map
30	IE_WE_30O010050	OWENBRIN_010	River	Mayo County Council		Moderate	Good	Good	Good	2021 or earlier	Review			Lough Mask and Lough Carra	LAWPRO, Restoration	View WB Page	View WB on EPA Water Map
30	IE_WE_30O010200	OWENBRIN_020	River	Mayo County Council	SAC; SPA;	Moderate	Moderate	Moderate	Good	2022-2027	At risk	Morphological	HYMO, For	Lough Mask and Lough Carra	LAWPRO, Restoration	View WB Page	View WB on EPA Water Map
30	IE_WE_30O020070	OWENRIFF (CORRIB)_010	River	Galway County Council	SAC;	Good	Good	High	High	2021 or earlier	Not at risk			Owenriff (Oughterard)	LAWPRO, Restoration	View WB Page	View WB on EPA Water Map
30	IE_WE_30O020200	OWENRIFF (CORRIB)_020	River	Galway County Council	SAC; SPA;	Good	Bad	Poor	High	2022-2027	At risk	Morphological, Nutrients, Organic, OtherSignificantImpacts	Ag, HYMO, IS	Owenriff (Oughterard)	LAWPRO, Restoration	View WB Page	View WB on EPA Water Map
30	IE_WE_30O030180	OWENWEE (CORRIB)_010	River	Galway County Council	SAC; SPA;	Good	Good	Good	Good	2021 or earlier	Not at risk			Failmore	LAWPRO, Restoration	View WB Page	View WB on EPA Water Map
30	IE_WE_30R010030	ROBE_010	River	Mayo County Council		Moderate	Good	Good	Good	2021 or earlier	Review			Lough Mask and Lough Carra	LAWPRO, Restoration	View WB Page	View WB on EPA Water Map
30	IE_WE_30R010200	ROBE_020	River	Mayo County Council		Good	Good	Good	Good	2021 or earlier	Not at risk			Lough Mask and Lough Carra	LAWPRO, Restoration	View WB Page	View WB on EPA Water Map
30	IE_WE_30R010310	ROBE_030	River	Mayo County Council		Moderate	Moderate	Good	Good	2021 or earlier	Not at risk			Lough Mask and Lough Carra	LAWPRO, Restoration	View WB Page	View WB on EPA Water Map
30	IE_WE_30R010400	ROBE_040	River	Mayo County Council		Moderate	Moderate	Good	Good	2021 or earlier	Review			Lough Mask and Lough Carra	LAWPRO, Restoration	View WB Page	View WB on EPA Water Map
30	IE_WE_30R010600	ROBE_050	River	Mayo County Council		Moderate	Moderate	Moderate	Good	2022-2027	At risk	Morphological	HYMO	Lough Mask and Lough Carra	LAWPRO, Restoration	View WB Page	View WB on EPA Water Map
30	IE_WE_30R010950	ROBE_060	River	Mayo County Council	SAC;	Good	Good	Moderate	Good	2022-2027	At risk	Nutrients	Ag	Lough Mask and Lough Carra	LAWPRO, Restoration	View WB Page	View WB on EPA Water Map
30	IE_WE_30R220540	RATHMALIKEEN_010	River	Mayo County Council	SAC;	Unassigned	Good	Good	Good	2021 or earlier	Review			Lough Mask and Lough Carra	LAWPRO, Restoration	View WB Page	View WB on EPA Water Map
30	IE_WE_30S010100	SINKING_010	River	Galway County Council	SAC;	Good	Moderate	Good	Good	2021 or earlier	Not at risk			Sinking and Upper Clare (Galway)	LAWPRO, Restoration	View WB Page	View WB on EPA Water Map
30	IE_WE_30S010300	SINKING_020	River	Galway County Council	SAC;	Moderate	Good	Good	Good	2021 or earlier	Not at risk			Sinking and Upper Clare (Galway)	LAWPRO, Restoration	View WB Page	View WB on EPA Water Map
30	IE_WE_30S010400	SINKING_030	River	Galway County Council	SAC;	Good	Moderate	Good	Good	2021 or earlier	Not at risk			Sinking and Upper Clare (Galway)	LAWPRO, Restoration	View WB Page	View WB on EPA Water Map
30	IE_WE_30S020400	SRAH STREAM_010	River	Mayo County Council	SAC;	Bad	Good	Moderate	Good	2022-2027	At risk	Chemical, UnknownImpactType	Ag	Lough Mask and Lough Carra	LAWPRO, Restoration	View WB Page	View WB on EPA Water Map
30	IE_WE_30S030100	SRAHNALONG_010	River	Mayo County Council	SAC; SPA;	Moderate	Good	High	Good	2021 or earlier	Not at risk			Lough Mask and Lough Carra	LAWPRO, Restoration	View WB Page	View WB on EPA Water Map
30	IE_WE_30S040100	SCARDAUN_010	River	Mayo County Council		Good	Good	Good	Good	2021 or earlier	Not at risk			Lough Mask and Lough Carra	LAWPRO, Restoration	View WB Page	View WB on EPA Water Map
30	IE_WE_30T010500	TERRYLAND_010	River	Galway City Council		Poor	Moderate	Moderate	Good	2022-2027	At risk	Morphological, Organic	HYMO, UR	Terryland	LAWPRO, Restoration	View WB Page	View WB on EPA Water Map
30	IE_WE_30T030300	TULLAGHAUN_010	River	Mayo County Council		Good	Good	Good	Good	2021 or earlier	Not at risk					View WB Page	View WB on EPA Water Map
30	IE_WE_30Y010055	YELLOW (SINKING)_010	River	Galway County Council	SAC;	Good	Good	Good	Good	2021 or earlier	Not at risk			Sinking and Upper Clare (Galway)	LAWPRO, Restoration	View WB Page	View WB on EPA Water Map
29, 30, 31	IE_WE_170_0700	Corrib Estuary	Transitional	Galway City Council	BW; SAC; SPA;	Good	Good	Moderate	Good	2022-2027	Review			Corrib	Galway City Council, Protection	View WB Page	View WB on EPA Water Map