

Cycle 3

**HA 29 Galway Bay South East Catchment
Report, May 2024**

Introduction

Water Quality
Summary

High Status
Objectives

Water Quality
Changes

WFD Risk

Significant
Pressures

Action

Summary
Information

Introduction

This report provides an overview of the water quality in the Galway Bay South East Catchment and the pressures impacting on water quality. This report is based on data up to 2021. The latest water quality data, dashboards and maps throughout this report are available on catchments.ie and [EPA Water Map](https://epa.ie/water-map).

The Galway Bay South East Catchment includes the area drained by all streams entering tidal water in Galway Bay between Black Head and Renmore Point, Galway, draining a total area of 1,270km². The largest urban centre in the catchment is the eastern part of Galway City. The other main urban centres in this catchment are Athenry, Loughrea, Gort, and Oranmore. This catchment is predominantly underlain by karstified limestone, including the northern part of the Burren in County Clare, and the groundwater and surface water systems in the area are closely interlinked.

The Galway Bay South East Catchment is divided into nine subcatchments and has 68 surface water bodies and 28 groundwater bodies.

[View the Galway Bay South East Catchment on the EPA Water Map](#)

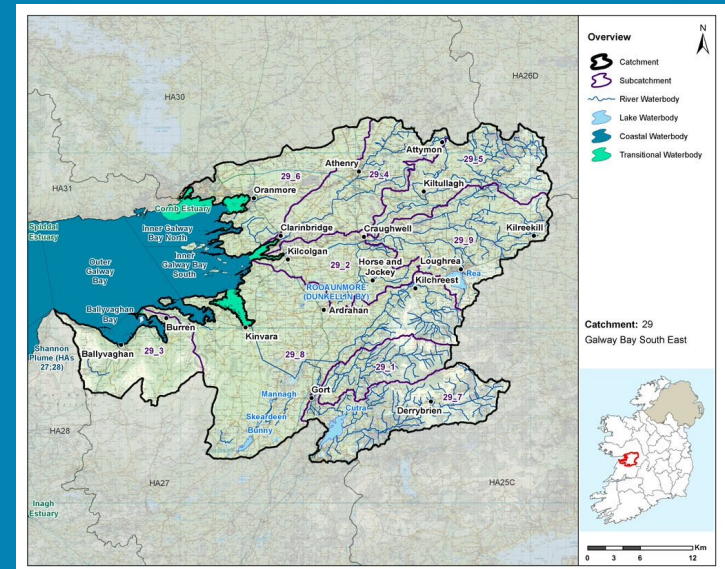
Previous Catchment Assessments

Previous catchment assessments, which provide additional historic context and information, are archived on catchments.ie:

- [Cycle 2 Catchment Assessments – published September 2018](#)
- [Cycle 3 Draft Catchment Assessments – published September 2021](#)

Online Dashboards

Links to online dashboards are provided in this report – these numbers may vary from those in this document as time progress and the online dashboards are updated based on the latest data and scientific assessments.



Overview of Subcatchments in the Galway Bay South East Catchment

Water Quality Summary

Introduction

Water Quality Summary

High Status Objectives

Water Quality Changes

WFD Risk

Significant Pressures

Action

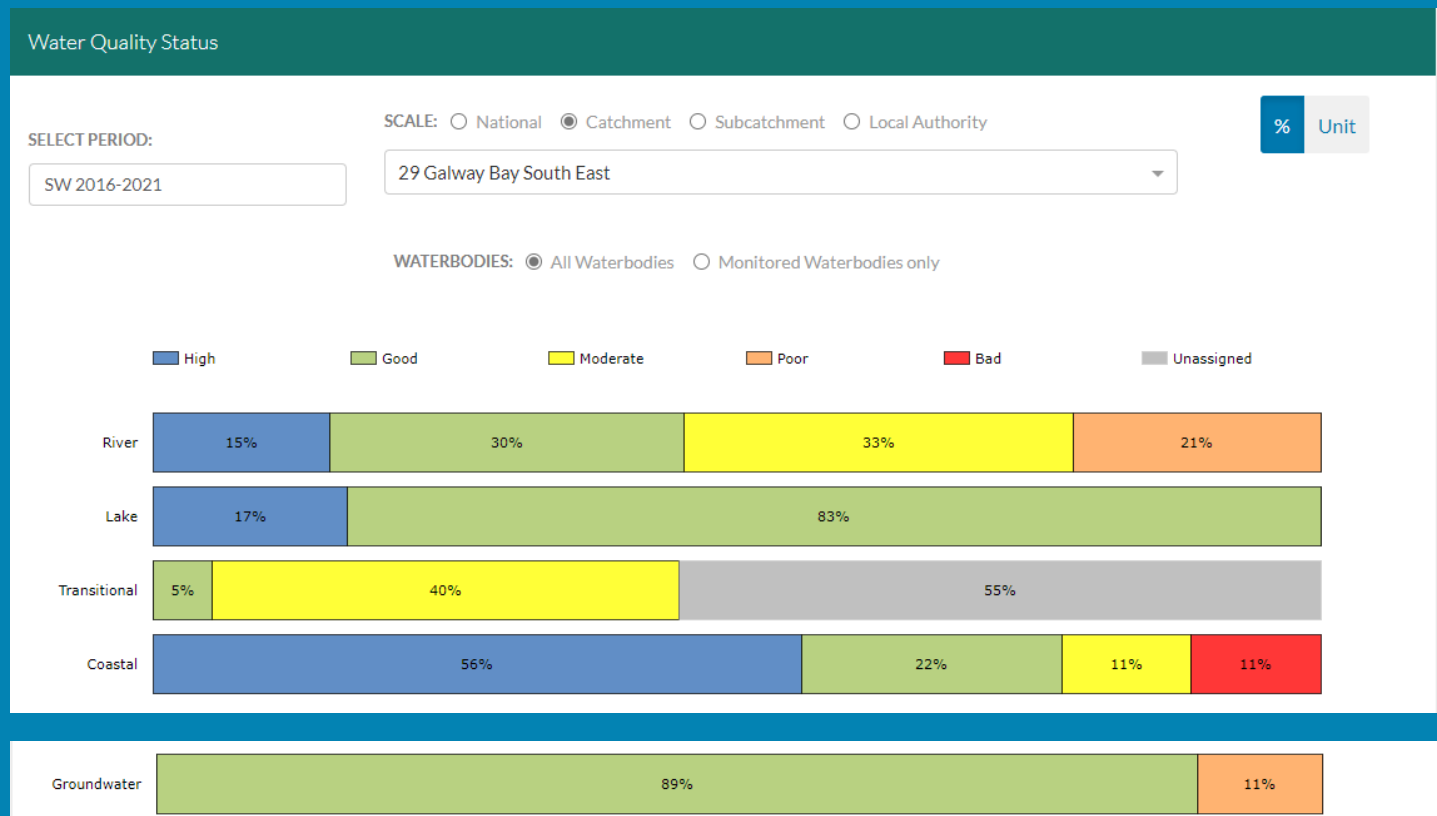
Summary Information

The dashboard below provides a breakdown of water quality status for surface and groundwater bodies in the Galway Bay South East Catchment.

A total of 43% of surface waterbodies were at Good or High Ecological Status in the 2016-2021 monitoring period. Eighty-nine percent of groundwater bodies were at Good status.

Go to EPA Water Maps for WFD Status

[EPA Water Map](#)



Water quality status 2016-2021 for the Galway Bay South East Catchment.
View Online Dashboard: <https://www.catchments.ie/data/#/dashboard/waterquality>

High Status Objective Waterbodies

Introduction

High status waters are prioritised for protection and action.

Water Quality Summary

There are eight waterbodies with a **High Ecological Status Objective (HSO)** in the Galway Bay South East Catchment, with two currently not meeting their environmental objective of High.

High Status Objectives

Grants for septic tank upgrades may be available in high status objective catchment areas - you can learn more and check your Eircode for eligibility here: <https://www.gov.ie/en/publication/6cc1e-domestic-waste-water-treatment-systems-septic-tanks>

The [EPA Water Map](#) shows the locations of HSO waterbodies. See *Status and Risk / High Status Objectives*.

Water Quality Changes

Water Quality Status - High Status Objective Waterbodies

SELECT TYPE:

All Surface Waters

SCALE: Catchment Local Authority

29 Galway Bay South East

	SW 2007-2009	SW 2010-2012	SW 2010-2015	SW 2013-2018	SW 2016-2021
BOLEYNEENDORRISH_010 (River)	Unassigned	High	High	High	High
BOLEYNEENDORRISH_020 (River)	Unassigned	High	High	High	High
Bunny (Lake)	Good	High	Good	Good	Good
Outer Galway Bay (Coastal)	Unassigned	Good	High	High	High
OWENDALULLEEGLH_010 (River)	High	High	High	Good	High
OWENDALULLEEGLH_020 (River)	Unassigned	High	High	High	High
OWENDALULLEEGLH_030 (River)	High	High	Moderate	Good	Good
OWENDALULLEEGLH_040 (River)	High	High	High	High	High

Action

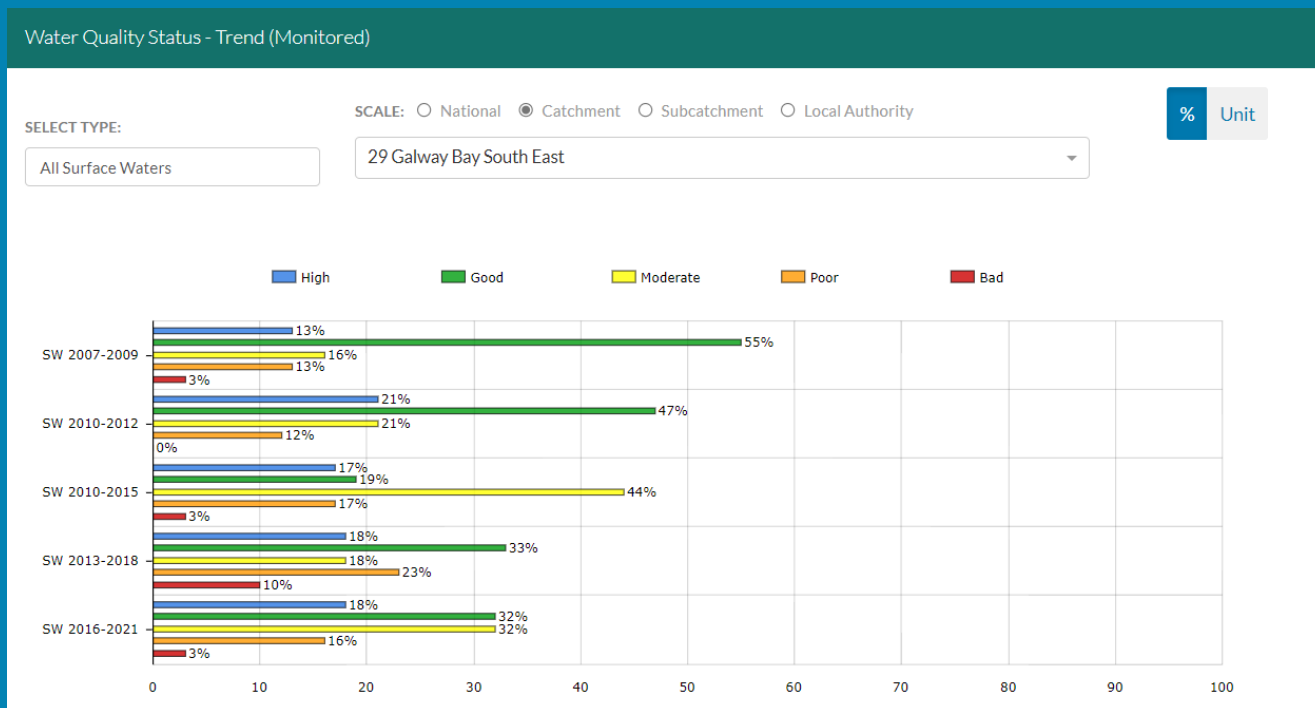
Summary Information

Water quality status for High Ecological Status Objective waterbodies.

View Online Dashboard: <https://www.catchments.ie/data/#/dashboard/waterquality>

Water Quality Changes

Below illustrates the changes in ecological status in monitored surface waterbodies over the last five monitoring cycles in the Galway Bay South East Catchment. Nationally while there have been improvements in some waterbodies, these have been offset by declines elsewhere.



Ecological status trends for monitored surface waterbodies over the last five monitoring cycles in the Galway Bay South East Catchment. **View online dashboard:** <https://www.catchments.ie/data/#/dashboard/waterquality>

A total of 52 (54%) waterbodies are currently meeting their environmental objective of Good or High Ecological Status.

	Total	Achieving Environmental Objectives (2016-2021)	High Status Environmental Objectives Waterbodies	Achieving High Status Environmental Objectives (2016-2021)
Rivers	33	14 (42%)	6	5 (83%)
Canals	-	-	-	-
Lakes	6	5 (83%)	1	0 (0%)
Transitional	20	1 (5%)	-	-
Coastal	9	7 (78%)	1	1 (100%)
Groundwater	28	25 (89%)	-	-

Introduction

Water Quality Summary

High Status Objectives

Water Quality Changes

WFD Risk

Significant Pressures

Action

Summary Information

WFD Risk

Introduction

Water Quality Summary

High Status Objectives

Water Quality Changes

WFD Risk

Significant Pressures

Action

Summary Information

A total of 26 (27%) waterbodies are *At Risk* of not meeting their environmental objective in the Galway Bay South East Catchment, while 26 (27%) are under *Review* and 44 (46%) are *Not At Risk*.

Go to [EPA Water Map](#) to see WFD Risk for this catchment



WFD Risk for the Galway Bay South East Catchment based on 2016-2021 data.
View Online Dashboard: <https://www.catchments.ie/data/#/dashboard/waterquality>

There are currently no heavily modified water bodies (HMWBs) in the Galway Bay South East Catchment.

There are no artificial waterbodies in the Galway Bay South East Catchment.

The [EPA's characterisation outcome report](#) has more information on WFD Risk

Introduction

Water Quality
Summary

High Status
Objectives

Water Quality
Changes

WFD Risk

Significant
Pressures

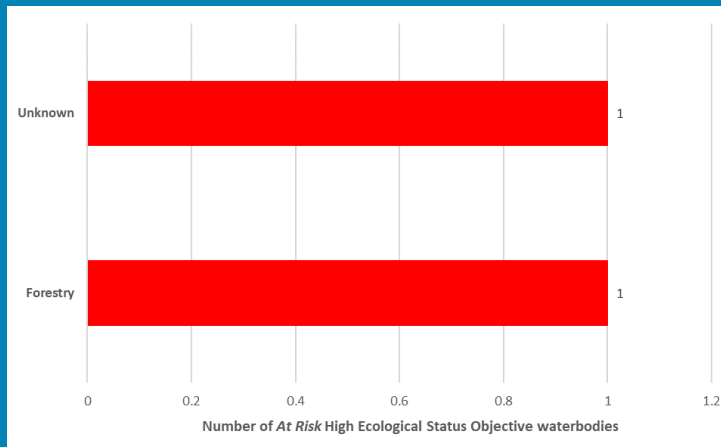
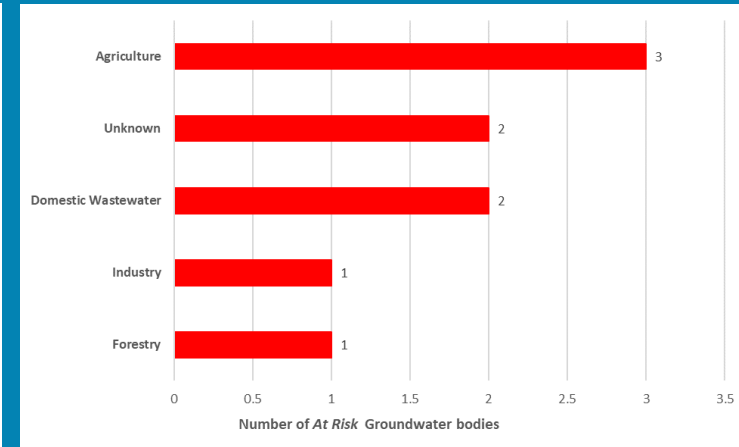
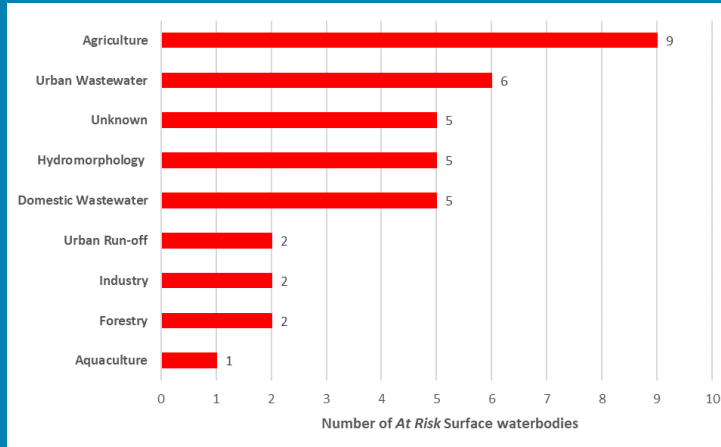
Action

Summary
Information

Significant Pressures driving risk

Click [here](#) for more information on significant pressures

Significant pressure types impacting the 20 *At Risk* surface waterbodies and six groundwater bodies are broken down in the figures below, including significant pressure information for the two *At Risk* High Ecological Status Objective waterbodies.



The issues driven by these pressures are mainly nutrient pollution, organic pollution and altered morphological condition (habitat) impacts for surface water and nutrient pollution, chemical quality diminution for surface water and groundwater chemical dependent terrestrial ecosystem damage for groundwaters. For more information, see <https://www.catchments.ie/data/#/dashboard/pressure?k=i351zs>.

Go to the Summary Information section to get significant pressure and issue data for At Risk waterbodies within the Galway Bay South East Catchment.

Significant Pressures

Introduction

Water Quality Summary

High Status Objectives

Water Quality Changes

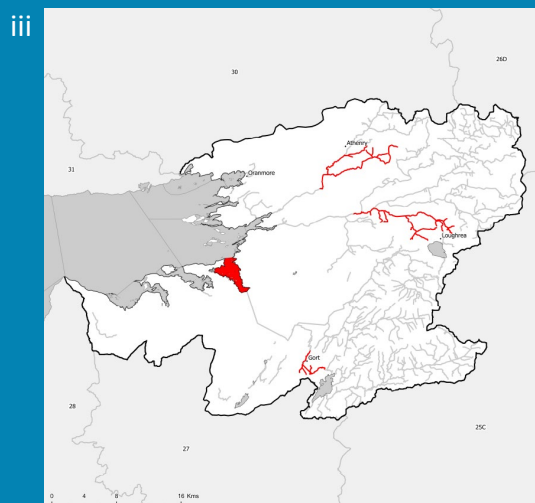
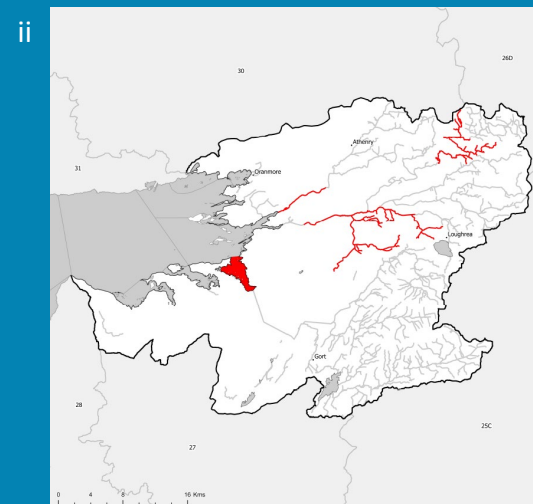
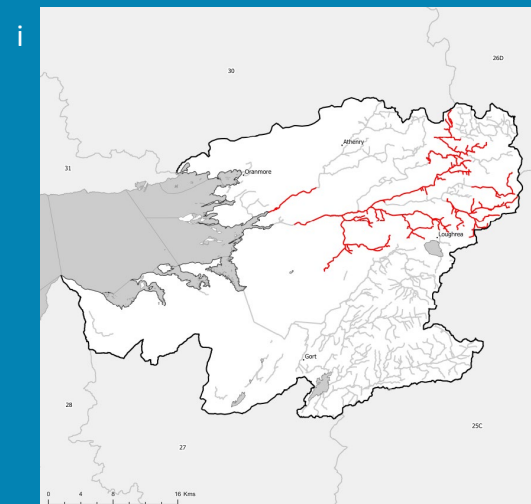
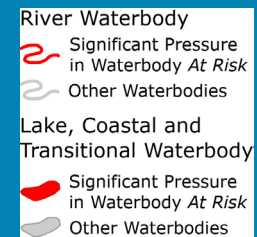
WFD Risk

Significant Pressures

Action

Summary Information

Agriculture is the top significant pressure impacting 46% of the 26 *At Risk* waterbodies within the Galway Bay South East Catchment, followed by 27% impacted by domestic wastewater and 23% by urban wastewater.



The catchments.ie dashboards will show all significant pressures identified for this catchment.

www.catchments.ie/data/#/dashboard/pressure

Go to the [EPA Water Maps](#) for the locations of all significant pressure types identified for this catchment

Locations of At Risk surface waterbodies impacted by i) Agriculture, ii) Domestic Wastewater and iii) Urban Wastewater.

Introduction

Water Quality
Summary

High Status
Objectives

Water Quality
Changes

WFD Risk

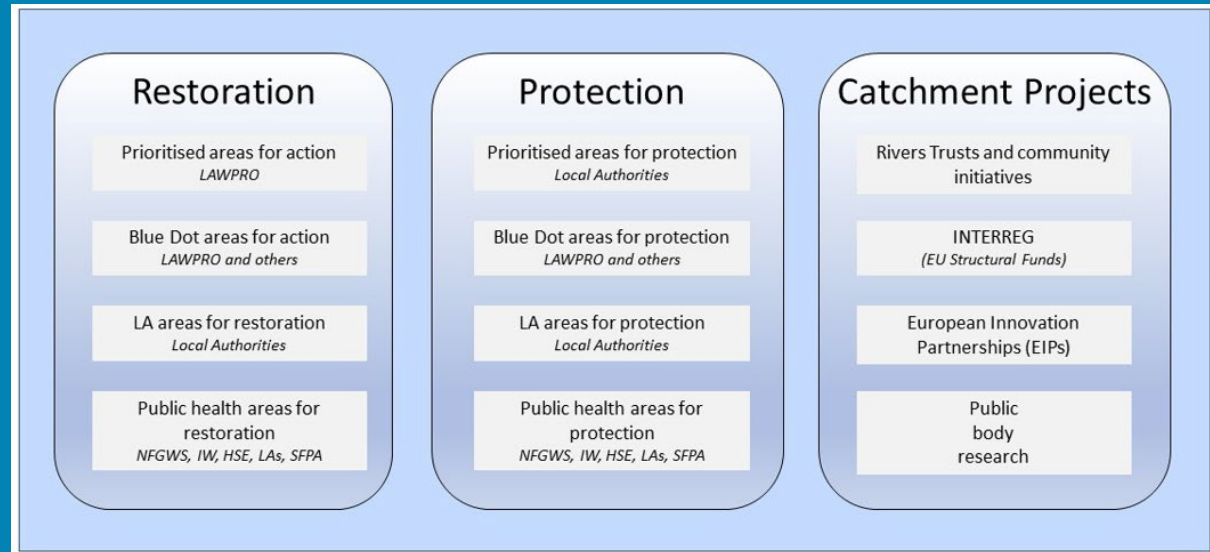
Significant
Pressures

Action

Summary
Information

Priority Areas for Action

A number of waterbodies have been prioritised through the selection of Areas for Action. There were two Priority Areas for Action identified for the second river basin management planning cycle in the Galway Bay South East Catchment. This has increased to a total of eight Areas for Restoration, two Areas for Protection and two Catchment Projects for the third cycle. ***Go to the summary information section to get Area for Action information for waterbodies within the Galway Bay South East Catchment.***



Types of Areas for Action under the third cycle River Basin Management Plan

- View the current progress of Areas for Action and Summary Reports completed by LAWPRO, on catchments.ie and the EPA Water Map:
 - <https://www.catchments.ie/data/#/areaforaction>
 - https://gis.epa.ie/EPAMaps/default?easting=?&northing=?&lid=EPA:WFD_AreasForAction
- LAWPRO have also published detailed desktop studies on Prioritised Areas for Action (PAAs) which are available their website: <https://lawaters.ie/desktop-studies/>
- Information on Areas for Action for the second cycle is available in Cycle 2 Catchment Assessments which have been archived on catchments.ie: <https://www.catchments.ie/download/cycle-2-catchment-assessments-published-september-2018/>

Introduction

Water Quality
Summary

High Status
Objectives

Water Quality
Changes

WFD Risk

Significant
Pressures

Action

Summary
Information

Summary information for all waterbodies in the Galway Bay South East Catchment

The next page provides a table with a breakdown of key information for all waterbodies in this catchment. The key is provided below. Additional information for each waterbody is available on <https://www.catchments.ie/data>, including a breakdown of status, a monitoring schedule for monitored waterbodies and downloadable chemistry results, where available.

Protected Area categories	BW: Bathing Water DW: Drinking Water Fish: Salmonid Waters NSA: Nutrient Sensitive Areas SAC: Special Area of Conservation, Natura 2000 (water dependent habitats and species) SF: Shellfish Area SPA: Special Area of Protection, Natura 2000 (water dependent habitat and species)
Significant pressure* types categories <i>* For At Risk waterbodies only</i>	Ab: Abstractions Ag: Agriculture Aq: Aquaculture At: Atmospheric DWW: Domestic Wastewater For: Forestry HPS: Historically polluted sites HYMO: Hydromorphology Ind: Industry IS: Invasive Species M+Q: Mines and Quarries Peat: Peat Drainage and Extraction UR: Urban Run-Off UWW: Urban Wastewater Was: Waste WT: Water Treatment

Catchment Code	Waterbody (WB) Code	WB Name	WB Type	Local Authority	Protected Area	Status 10-15	Status 13-18	Status 16-21	Environmental Objective	Environmental Objective Date	WFD Risk 16-21	Significant Issue(s)	Significant Pressure(s)	Area for Action (AFA)	AFA (lead, type)	Link to WB page on catchments.ie	Link to WB on EPA Water Map
27, 28, 29	IE_SH_070_0000	Shannon Plume (HAs 27;28)	Coastal	Clare County Council	BW; SAC; SPA;	Unassigned	High	High	Good	2021 or earlier	Not at risk					View WB Page	View WB on EPA Water Map
28, 29, 31, 32	IE_WE_010_0000	Aran Islands, Galway Bay, Connemara (HAs 29;31)	Coastal	Galway County Council	BW; SAC; SPA; SF;	Unassigned	High	High	Good	2021 or earlier	Review					View WB Page	View WB on EPA Water Map
29, 31	IE_WE_100_0000	Outer Galway Bay	Coastal	Galway County Council	BW; SAC; SPA;	High	High	High	High	2021 or earlier	Not at risk					View WB Page	View WB on EPA Water Map
29	IE_WE_110_0000	Ballyvaghan Bay	Coastal	Clare County Council	BW; SAC; SPA; SF;	Unassigned	Good	High	Good	2021 or earlier	Review					View WB Page	View WB on EPA Water Map
29	IE_WE_130_0000	Aughinish Bay	Coastal	Clare County Council	SAC; SPA; SF;	Unassigned	Unassigned	Good	Good	2021 or earlier	Review					View WB Page	View WB on EPA Water Map
29	IE_WE_160_0000	Inner Galway Bay South	Coastal	Galway County Council	BW; SAC; SPA; SF;	Unassigned	Good	High	Good	2021 or earlier	Not at risk			Clarinbridge and Kinvara_Public Health	LAWPRO, Restoration	View WB Page	View WB on EPA Water Map
29	IE_WE_160_0700	Rincarna Pools South	Coastal	Galway County Council	SAC; SPA;	Unassigned	Bad	Moderate	Good	2022-2027	Review					View WB Page	View WB on EPA Water Map
29	IE_WE_160_0710	Rincarna Pools North	Coastal	Galway County Council	SAC; SPA;	Poor	Bad	Bad	Good	2022-2027	At risk	UnknownImpactType	Unknown			View WB Page	View WB on EPA Water Map
29, 31	IE_WE_170_0000	Inner Galway Bay North	Coastal	Galway County Council	BW; SAC; SPA; SF;	Good	Good	Good	Good	2021 or earlier	Not at risk					View WB Page	View WB on EPA Water Map
25B, 25C, 26D, 26G, 29	IE_SH_G_019	Aughrim	Groundwater	Galway County Council	DWPA; SAC	Good	Good	Good	Good	2021 or earlier	Not at risk					View WB Page	View WB on EPA Water Map
27, 28, 29	IE_SH_G_047	Burren	Groundwater	Clare County Council	DWPA; SAC	Good	Good	Good	Good	2021 or earlier	Not at risk					View WB Page	View WB on EPA Water Map
25C, 27, 29	IE_SH_G_071	Crusheen	Groundwater	Clare County Council	DWPA; SAC	Good	Good	Good	Good	2021 or earlier	Not at risk					View WB Page	View WB on EPA Water Map
27, 29	IE_SH_G_080	Ennis	Groundwater	Clare County Council	DWPA; SAC	Good	Good	Good	Good	2021 or earlier	At risk	ChemicalQualityDiminution ForSW, Nutrients	Ag, For, Unknown			View WB Page	View WB on EPA Water Map
25C, 25D, 27, 29	IE_SH_G_157	Lough Graney	Groundwater	Clare County Council	DWPA; SAC	Good	Good	Good	Good	2021 or earlier	Not at risk					View WB Page	View WB on EPA Water Map
27, 28, 29	IE_SH_G_212	Slieve Elva	Groundwater	Clare County Council	DWPA; SAC	Good	Good	Good	Good	2021 or earlier	Not at risk					View WB Page	View WB on EPA Water Map
26B, 26C, 26D, 26E, 26G, 29, 30	IE_SH_G_225	Suck South	Groundwater	Galway County Council	DWPA; SAC	Good	Good	Good	Good	2021 or earlier	Not at risk					View WB Page	View WB on EPA Water Map
25B, 25C, 26D, 26G, 29	IE_SH_G_236	Tynagh	Groundwater	Galway County Council	DWPA; SAC	Good	Good	Good	Good	2021 or earlier	Not at risk					View WB Page	View WB on EPA Water Map
27, 28, 29	IE_WE_G_0001	Ballyvaughan Uplands	Groundwater	Clare County Council	DWPA; SAC	Good	Good	Good	Good	2021 or earlier	Not at risk					View WB Page	View WB on EPA Water Map
27, 29	IE_WE_G_0002	Kinvara-Gort	Groundwater	Galway County Council	DWPA; SAC	Good	Good	Good	Good	2021 or earlier	Not at risk					View WB Page	View WB on EPA Water Map
29, 30, 31, 32	IE_WE_G_0006	Maam-Clonbur	Groundwater	Galway County Council	DWPA; SAC	Good	Good	Good	Good	2021 or earlier	Not at risk					View WB Page	View WB on EPA Water Map
29, 30	IE_WE_G_0007	Loughrea	Groundwater	Galway County Council	DWPA; SAC	Good	Good	Good	Good	2021 or earlier	Not at risk					View WB Page	View WB on EPA Water Map
29, 30	IE_WE_G_0008	Clarinbridge	Groundwater	Galway County Council	DWPA; SAC	Good	Good	Good	Good	2021 or earlier	Not at risk					View WB Page	View WB on EPA Water Map
26D, 29, 30, 34	IE_WE_G_0020	Clare-Corrib	Groundwater	Galway County Council	DWPA; SAC	Good	Good	Good	Good	2021 or earlier	Not at risk					View WB Page	View WB on EPA Water Map
29	IE_WE_G_0087	GWDE-Galway Bay Complex Fens (SAC000268)	Groundwater	Galway County Council	DWPA; SAC (GWDE)	Good	Good	Good	Good	2021 or earlier	Not at risk					View WB Page	View WB on EPA Water Map
29	IE_WE_G_0088	GWDE-Ballinaduff Turlough (SAC002295)	Groundwater	Galway County Council	DWPA; SAC (GWDE)	Good	Good	Good	Good	2021 or earlier	Not at risk					View WB Page	View WB on EPA Water Map
29	IE_WE_G_0090	GWDE-Ballyvelaghan Turlough (SAC000268)	Groundwater	Clare County Council	DWPA; SAC (GWDE)	Good	Good	Good	Good	2021 or earlier	Not at risk					View WB Page	View WB on EPA Water Map
25C, 27, 29	IE_WE_G_0091	GWDE-Caherglassaun Turlough (SAC000238)	Groundwater	Galway County Council	DWPA; SAC (GWDE)	Poor	Poor	Poor	Good	2022-2027	At risk	GWChemicalDependentTerrestrialEcosystemDamage, Nutrients	Unknown			View WB Page	View WB on EPA Water Map
29	IE_WE_G_0092	GWDE-Cahermore Turlough (SAC002294)	Groundwater	Galway County Council	DWPA; SAC (GWDE)	Good	Good	Good	Good	2021 or earlier	Not at risk					View WB Page	View WB on EPA Water Map
25C, 29	IE_WE_G_0093	GWDE-Coy Turlough (SAC002117)	Groundwater	Galway County Council	DWPA; SAC (GWDE)	Good	Good	Good	Good	2021 or earlier	At risk	ChemicalQualityDiminution ForSW, Nutrients	Ag			View WB Page	View WB on EPA Water Map
27, 29	IE_WE_G_0095	GWDE-Gortboyheen Turlough (SAC000054)	Groundwater	Clare County Council	DWPA; SAC (GWDE)	Good	Good	Good	Good	2021 or earlier	Not at risk					View WB Page	View WB on EPA Water Map
29	IE_WE_G_0096	GWDE-Kiltiernan Turlough (SAC001285)	Groundwater	Galway County Council	DWPA; SAC (GWDE)	Good	Good	Good	Good	2021 or earlier	Review					View WB Page	View WB on EPA Water Map
27, 29	IE_WE_G_0098	GWDE-Lough Mannagh Turlough (SAC001926)	Groundwater	Clare County Council	DWPA; SAC (GWDE)	Good	Good	Good	Good	2021 or earlier	Not at risk					View WB Page	View WB on EPA Water Map
29	IE_WE_G_0099	GWDE-Muckinish Turlough (SAC000054)	Groundwater	Clare County Council	DWPA; SAC (GWDE)	Good	Good	Good	Good	2021 or earlier	Not at risk					View WB Page	View WB on EPA Water Map
25C, 26D, 29, 30	IE_WE_G_0100	GWDE-Rahasane Turlough (SAC000322)	Groundwater	Galway County Council	DWPA; SAC (GWDE)	Good	Good	Good	Good	2021 or earlier	At risk	ChemicalQualityDiminution ForSW, Nutrients	DWTS, Ag			View WB Page	View WB on EPA Water Map
29	IE_WE_G_0105	GWDE-Tullynafrankagh Turlough (SAC000606)	Groundwater	Galway County Council	DWPA; SAC (GWDE)	Poor	Poor	Poor	Good	2022-2027	At risk	GWChemicalDependentTerrestrialEcosystemDamage, Nutrients	DWTS			View WB Page	View WB on EPA Water Map
29, 30	IE_WE_G_0106	GWDE-Lough Corrib Fens 3 & 4 (SAC000297)	Groundwater	Galway County Council	DWPA; SAC (GWDE)	Good	Good	Good	Good	2021 or earlier	Not at risk					View WB Page	View WB on EPA Water Map

29	IE_WE_G_0117	Industrial Facility (P0056-01)	Groundwater	Galway County Council	DWPA; SAC	Poor	Poor	Poor	Good	2022-2027	At risk	Chemical, ChemicalQualityDiminution ForSW, Nutrients	Ind			View WB Page	View WB on EPA Water Map
29	IE_WE_27_114	Bunny	Lake	Clare County Council	SAC;	Good	Good	Good	High	2022-2027	At risk	Hydrological, Morphological	Unknown	Lough Bunny	Clare County Council, Restoration	View WB Page	View WB on EPA Water Map
29	IE_WE_29_107	ROOAUNMORE (DUNKELLIN BY)	Lake	Galway County Council	SAC;	Unassigned	Unassigned	Good	Good	2021 or earlier	Not at risk					View WB Page	View WB on EPA Water Map
29	IE_WE_29_168	Mannagh	Lake	Galway County Council	SAC;	Unassigned	Unassigned	Good	Good	2021 or earlier	Not at risk					View WB Page	View WB on EPA Water Map
29	IE_WE_29_181	Skeardeen	Lake	Clare County Council	SAC;	Unassigned	Unassigned	High	Good	2021 or earlier	Not at risk					View WB Page	View WB on EPA Water Map
29	IE_WE_29_194	Rea	Lake	Galway County Council	BW; DWPA; SAC; SPA;	Moderate	Good	Good	Good	2021 or earlier	Not at risk			St Cleran's	LAWPRO, Restoration	View WB Page	View WB on EPA Water Map
29	IE_WE_29_37	Cutra	Lake	Galway County Council	SAC; SPA;	Moderate	Good	Good	Good	2021 or earlier	Not at risk			Owendalulleagh Lough Cutra	LAWPRO, Restoration	View WB Page	View WB on EPA Water Map
29	IE_WE_29B020100	BEAGH_010	River	Galway County Council	SAC; SPA;	Moderate	Moderate	Good	Good	2021 or earlier	Not at risk			Owendalulleagh Lough Cutra	LAWPRO, Restoration	View WB Page	View WB on EPA Water Map
29	IE_WE_29B030300	BALLYMABILLA_010	River	Galway County Council		Moderate	Good	Good	Good	2021 or earlier	Not at risk			Raford	LAWPRO, Restoration	View WB Page	View WB on EPA Water Map
29	IE_WE_29B040100	BOLEYNEENDORRISH_010	River	Galway County Council	SAC;	High	High	High	High	2021 or earlier	Not at risk					View WB Page	View WB on EPA Water Map
29	IE_WE_29B040300	BOLEYNEENDORRISH_020	River	Galway County Council	SAC;	High	High	High	High	2021 or earlier	Not at risk					View WB Page	View WB on EPA Water Map
29	IE_WE_29B040800	BOLEYNEENDORRISH_030	River	Galway County Council		Moderate	High	Good	Good	2021 or earlier	Not at risk			Ballyaneen Rakerin GWS. Peterswell Castledaly GWS.	NFGWS, Protection	View WB Page	View WB on EPA Water Map
29	IE_WE_29C010200	CANNAHOWNA_010	River	Galway County Council	DWPA;	Good	Poor	Moderate	Good	2022-2027	At risk	Hydrological, Organic	Unknown, UWW	Owendalulleagh Lough Cutra	LAWPRO, Restoration	View WB Page	View WB on EPA Water Map
29	IE_WE_29C020040	CLARINBRIDGE_010	River	Galway County Council		Moderate	Good	Good	Good	2021 or earlier	Not at risk			Clarinbridge	LAWPRO, Restoration	View WB Page	View WB on EPA Water Map
29	IE_WE_29C020200	CLARINBRIDGE_020	River	Galway County Council	SAC;	Unassigned	Moderate	Moderate	Good	2022-2027	Review			Clarinbridge	LAWPRO, Restoration	View WB Page	View WB on EPA Water Map
29	IE_WE_29C020300	CLARINBRIDGE_030	River	Galway County Council		Poor	Poor	Moderate	Good	2022-2027	At risk	Nutrients, Organic	UWW	Clarinbridge	LAWPRO, Restoration	View WB Page	View WB on EPA Water Map
29	IE_WE_29C020400	CLARINBRIDGE_040	River	Galway County Council		Poor	Poor	Poor	Good	2022-2027	At risk	Nutrients	UWW	Clarinbridge	LAWPRO, Restoration	View WB Page	View WB on EPA Water Map
29	IE_WE_29C020500	CLARINBRIDGE_050	River	Galway County Council		Poor	Poor	Poor	Good	2022-2027	At risk	Nutrients, Organic	DWTS, UR, Ag	Clarinbridge	LAWPRO, Restoration	View WB Page	View WB on EPA Water Map
29	IE_WE_29C031000	CARRA STREAM_010	River	Galway County Council		Moderate	Poor	Poor	Good	2022-2027	At risk	Sediment, Morphological, Nutrients	Ag, HYMO	St Cleran's	LAWPRO, Restoration	View WB Page	View WB on EPA Water Map
29	IE_WE_29C032000	CARRA STREAM_020	River	Galway County Council		Good	Good	Good	Good	2021 or earlier	Not at risk			St Cleran's	LAWPRO, Restoration	View WB Page	View WB on EPA Water Map
29	IE_WE_29C050400	CARROWMONEASH (Oranmore)_010	River	Galway County Council	SAC; SPA;	Unassigned	Unassigned	Poor	Good	2022-2027	Review			Carrowmoneash	LAWPRO, Restoration	View WB Page	View WB on EPA Water Map
29	IE_WE_29G220860	GLENINAGH_SOUTH_010	River	Clare County Council	SAC;	Unassigned	Unassigned	Good	Good	2021 or earlier	Not at risk					View WB Page	View WB on EPA Water Map
29	IE_WE_29K010100	KILCOLGAN_010	River	Galway County Council	SAC; SPA;	Unassigned	Poor	Moderate	Good	2022-2027	At risk	Sediment, Morphological, Organic	HYMO, UR	St Cleran's	LAWPRO, Restoration	View WB Page	View WB on EPA Water Map
29	IE_WE_29K010200	KILCOLGAN_020	River	Galway County Council		Poor	Poor	Poor	Good	2022-2027	At risk	Nutrients, Organic	Ag, UWW	St Cleran's	LAWPRO, Restoration	View WB Page	View WB on EPA Water Map
29	IE_WE_29K010400	KILCOLGAN_030	River	Galway County Council		Moderate	Bad	Poor	Good	2022-2027	At risk	Sediment, Morphological, Nutrients, Organic	UWW, Ag, DWTS, HYMO, Ind	St Cleran's	LAWPRO, Restoration	View WB Page	View WB on EPA Water Map
29	IE_WE_29K010600	KILCOLGAN_040	River	Galway County Council	SAC; SPA;	Moderate	Poor	Poor	Good	2022-2027	At risk	Morphological, Nutrients, Organic	HYMO, Ind, Ag, DWTS	St Cleran's	LAWPRO, Restoration	View WB Page	View WB on EPA Water Map
29	IE_WE_29K010700	KILCOLGAN_050	River	Galway County Council	SAC; SPA;	Unassigned	Moderate	Moderate	Good	2022-2027	Review			St Cleran's	LAWPRO, Restoration	View WB Page	View WB on EPA Water Map
29	IE_WE_29K022100	KILCHREEST_010	River	Galway County Council	SAC; SPA;	Unassigned	Unassigned	Good	Good	2021 or earlier	Review			Kilchreest	LAWPRO, Restoration	View WB Page	View WB on EPA Water Map
29	IE_WE_29L010600	LECARROW STREAM_010	River	Galway County Council		Moderate	Good	Moderate	Good	2022-2027	At risk	Nutrients	Ag	St Cleran's	LAWPRO, Restoration	View WB Page	View WB on EPA Water Map
29	IE_WE_29O010500	OWENDALULLEEGH_010	River	Galway County Council		High	Good	High	High	2021 or earlier	Not at risk			Owendalulleagh Lough Cutra	LAWPRO, Restoration	View WB Page	View WB on EPA Water Map
29	IE_WE_29O010700	OWENDALULLEEGH_020	River	Galway County Council		High	High	High	High	2021 or earlier	Not at risk			Owendalulleagh Lough Cutra	LAWPRO, Restoration	View WB Page	View WB on EPA Water Map
29	IE_WE_29O010800	OWENDALULLEEGH_030	River	Galway County Council		Moderate	Good	Good	High	2022-2027	At risk	Morphological	For	Owendalulleagh Lough Cutra	LAWPRO, Restoration	View WB Page	View WB on EPA Water Map
29	IE_WE_29O010900	OWENDALULLEEGH_040	River	Galway County Council		High	High	High	High	2021 or earlier	Not at risk			Owendalulleagh Lough Cutra	LAWPRO, Restoration	View WB Page	View WB on EPA Water Map
29	IE_WE_29O011000	OWENDALULLEEGH_050	River	Galway County Council	SAC;	Moderate	Moderate	Moderate	Good	2022-2027	At risk	Hydrological, Morphological	For, HYMO	Owendalulleagh Lough Cutra	LAWPRO, Restoration	View WB Page	View WB on EPA Water Map
29	IE_WE_29R010100	RAFORD_010	River	Galway County Council		Good	Poor	Good	Good	2021 or earlier	Not at risk			Raford	LAWPRO, Restoration	View WB Page	View WB on EPA Water Map
29	IE_WE_29R010200	RAFORD_020	River	Galway County Council		Moderate	Moderate	Moderate	Good	2022-2027	At risk	Nutrients	Ag, DWTS	Raford	LAWPRO, Restoration	View WB Page	View WB on EPA Water Map
29	IE_WE_29R010500	RAFORD_030	River	Galway County Council		Good	Good	Good	Good	2021 or earlier	Review			Raford	LAWPRO, Restoration	View WB Page	View WB on EPA Water Map
29	IE_WE_29R090950	ROCKHILL (Galway)_010	River	Galway County Council	SAC; SPA;	Unassigned	Poor	Moderate	Good	2022-2027	Review			Carrowmoneash	LAWPRO, Restoration	View WB Page	View WB on EPA Water Map
29	IE_WE_29T010300	TOBERDONEY_010	River	Galway County Council		Moderate	Moderate	Moderate	Good	2022-2027	At risk	Nutrients	Ag	St Cleran's	LAWPRO, Restoration	View WB Page	View WB on EPA Water Map
29	IE_WE_29T010700	TOBERDONEY_020	River	Galway County Council		Poor	Moderate	Moderate	Good	2022-2027	At risk	Sediment, Nutrients	Ag	St Cleran's	LAWPRO, Restoration	View WB Page	View WB on EPA Water Map

29	IE_WE_110_0100	Muckinish Lough	Transitional	Clare County Council	SAC;	Unassigned	Bad	Moderate	Good	2022-2027	Review					View WB Page	View WB on EPA Water Map
29	IE_WE_120_0100	Murree Lough	Transitional	Clare County Council	SAC; SPA;	Moderate	Moderate	Unassigned	Good	Unknown	At risk	UnknownImpactType	Unknown			View WB Page	View WB on EPA Water Map
29	IE_WE_140_0100	Aughinish Lagoon	Transitional	Clare County Council	SAC; SPA;	Unassigned	Poor	Unassigned	Good	Unknown	Review					View WB Page	View WB on EPA Water Map
29	IE_WE_140_0200	Carrownahallia Lagoon, Aughinish	Transitional	Clare County Council	SAC; SPA;	Unassigned	Moderate	Unassigned	Good	Unknown	Review					View WB Page	View WB on EPA Water Map
29	IE_WE_150_0100	Rossalia Lagoon	Transitional	Clare County Council	SAC; SPA;	Unassigned	Poor	Moderate	Good	2022-2027	Review					View WB Page	View WB on EPA Water Map
29	IE_WE_160_0100	Kinvarra Bay	Transitional	Galway County Council	SAC; SPA; SF;	Moderate	Moderate	Moderate	Good	2022-2027	At risk	Nutrients, Organic	DWTS, Aq, UWW	Clarinbridge and Kinvara_Public Health	LAWPRO, Restoration	View WB Page	View WB on EPA Water Map
29	IE_WE_160_0200	Bridge Lough, Knockakilleen	Transitional	Galway County Council	SAC; SPA; SF;	Bad	Good	Moderate	Good	2022-2027	At risk	UnknownImpactType	Unknown			View WB Page	View WB on EPA Water Map
29	IE_WE_160_0300	Loughaungreena (Doorus Loughs)	Transitional	Galway County Council	SAC;	Unassigned	Moderate	Unassigned	Good	Unknown	Review					View WB Page	View WB on EPA Water Map
29	IE_WE_160_0400	Lough Fadda (Doorus Loughs)	Transitional	Galway County Council	SAC;	Unassigned	Moderate	Unassigned	Good	Unknown	Review					View WB Page	View WB on EPA Water Map
29	IE_WE_160_0500	Lough Namona (Doorus Loughs)	Transitional	Galway County Council	SAC;	Unassigned	Bad	Unassigned	Good	Unknown	Review					View WB Page	View WB on EPA Water Map
29	IE_WE_160_0600	Lough Sallagh (Doorus Loughs)	Transitional	Galway County Council	SAC; SPA; SF;	Unassigned	Moderate	Unassigned	Good	Unknown	Review					View WB Page	View WB on EPA Water Map
29	IE_WE_160_0800	Dunbulcaun Bay	Transitional	Galway County Council	SAC; SPA; SF;	Unassigned	High	Good	Good	2021 or earlier	Not at risk			Clarinbridge and Kinvara_Public Health	LAWPRO, Restoration	View WB Page	View WB on EPA Water Map
29	IE_WE_170_0100	Mweeloon Pool South	Transitional	Galway County Council	SAC; SPA;	Unassigned	Poor	Moderate	Good	2022-2027	Review					View WB Page	View WB on EPA Water Map
29	IE_WE_170_0150	Mweeloon Pool North	Transitional	Galway County Council	SAC; SPA;	Unassigned	Poor	Moderate	Good	2022-2027	Review					View WB Page	View WB on EPA Water Map
29	IE_WE_170_0200	Loughaunascalua, Ardfray Point	Transitional	Galway County Council	SAC; SPA;	Unassigned	Moderate	Unassigned	Good	Unknown	Review					View WB Page	View WB on EPA Water Map
29	IE_WE_170_0300	Ardfray Oyster Pool	Transitional	Galway County Council	SAC; SPA;	Unassigned	Poor	Moderate	Good	2022-2027	Review					View WB Page	View WB on EPA Water Map
29	IE_WE_170_0400	Turreen Lough (Rinville West)	Transitional	Galway County Council	SAC; SPA;	Unassigned	Moderate	Unassigned	Good	Unknown	Review					View WB Page	View WB on EPA Water Map
29	IE_WE_170_0500	Oranmore Bay	Transitional	Galway County Council	SAC; SPA;	Unassigned	High	Unassigned	Good	Unknown	Not at risk					View WB Page	View WB on EPA Water Map
29	IE_WE_170_0600	Renmore Lough, Galway City	Transitional	Galway City Council	SAC;	Unassigned	Moderate	Unassigned	Good	Unknown	Review					View WB Page	View WB on EPA Water Map
29, 30, 31	IE_WE_170_0700	Corrib Estuary	Transitional	Galway City Council	BW; SAC; SPA;	Good	Good	Moderate	Good	2022-2027	Review			Corrib	Galway City Council, Protection	View WB Page	View WB on EPA Water Map