

Cycle 3

HA 26C Upper Shannon Catchment Report, May 2024

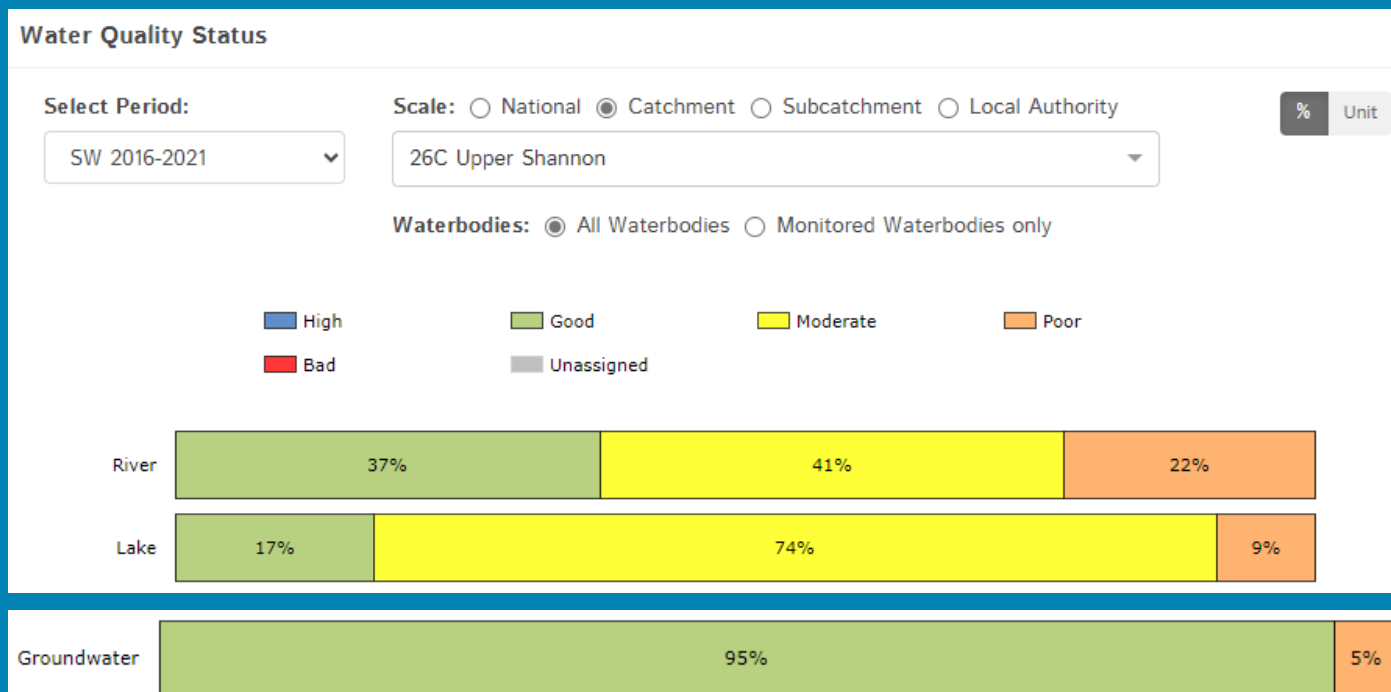
Water Quality Summary

The dashboard below provides a breakdown of water quality status for surface and groundwater bodies in the Upper Shannon Catchment.

A total of 32% of surface waterbodies were at Good Ecological Status in the 2016-2021 monitoring period. Ninety-five percent of groundwater bodies were at Good status.

**Go to EPA Water Maps
for WFD Status**

[EPA Water Map](#)



Water quality status 2016-2021 for the Upper Shannon Catchment. Note canals are also included under the river category.

View Online Dashboard: <https://www.catchments.ie/data/#/dashboard/waterquality>

Introduction

Water Quality
Summary

Water Quality
Changes

WFD Risk

Significant
Pressures

Action

Summary
Information

Water Quality Changes

Below illustrates the changes in ecological status in monitored surface waterbodies over the last five monitoring cycles in the Upper Shannon Catchment. Nationally while there have been improvements in some waterbodies, these have been offset by declines elsewhere.

Introduction

Water Quality Summary

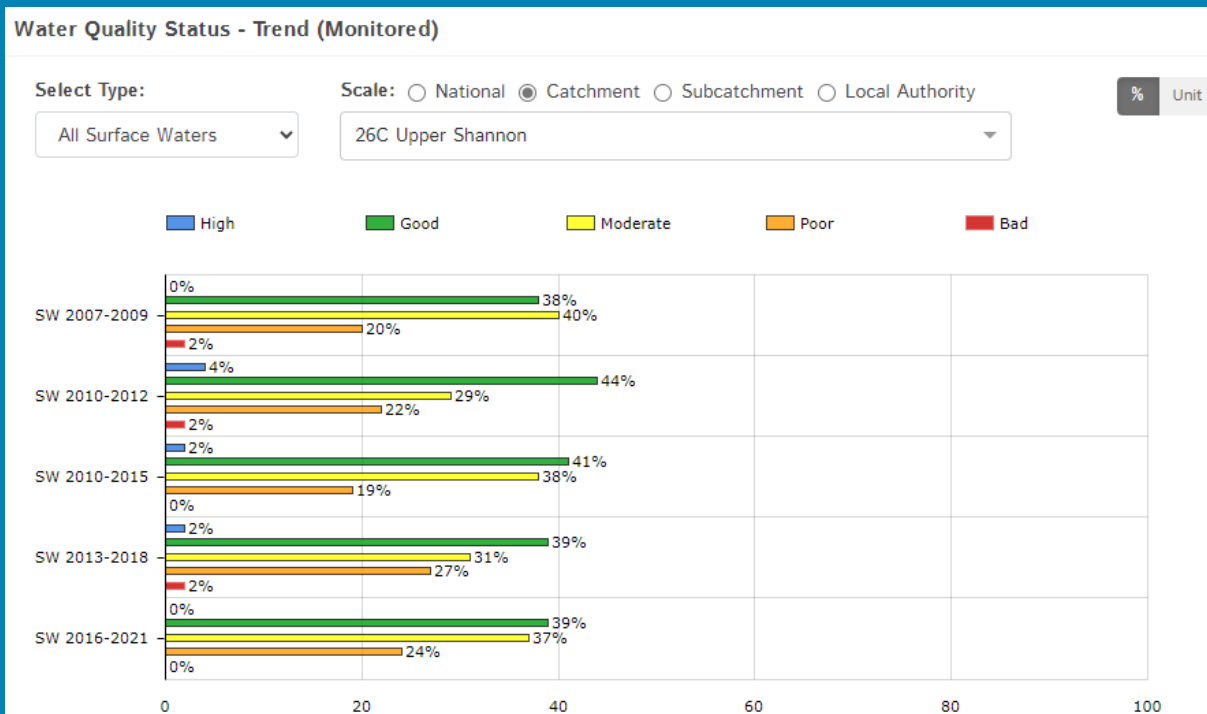
Water Quality Changes

WFD Risk

Significant Pressures

Action

Summary Information



Ecological status trends for monitored surface waterbodies over the last five monitoring cycles in the Upper Shannon Catchment.

View online dashboard: <https://www.catchments.ie/data/#/dashboard/waterquality>

A total of 44 (44%) waterbodies are currently meeting their environmental objective of Good Ecological Status, and Good Ecological Potential for canals.

	Total	Achieving Environmental Objectives (2016-2021)	High Status Environmental Objectives Waterbodies	Achieving High Status Environmental Objectives (2016-2021)
Rivers	58	21 (36%)	0	0 (0%)
Canals	1	1 (100%)	0	0 (0%)
Lakes	23	4 (17%)	0	0 (0%)
Transitional	-	-	-	-
Coastal	-	-	-	-
Groundwater	19	18 (95%)	0	0 (0%)

WFD Risk

A total of 39 (38%) waterbodies are *At Risk* of not meeting their environmental objective in the Upper Shannon Catchment, while 22 (22%) are under *Review* and 40 (40%) are *Not At Risk*.

[Go to EPA Water Map to see WFD Risk for this catchment](#)

Introduction

Water Quality Summary

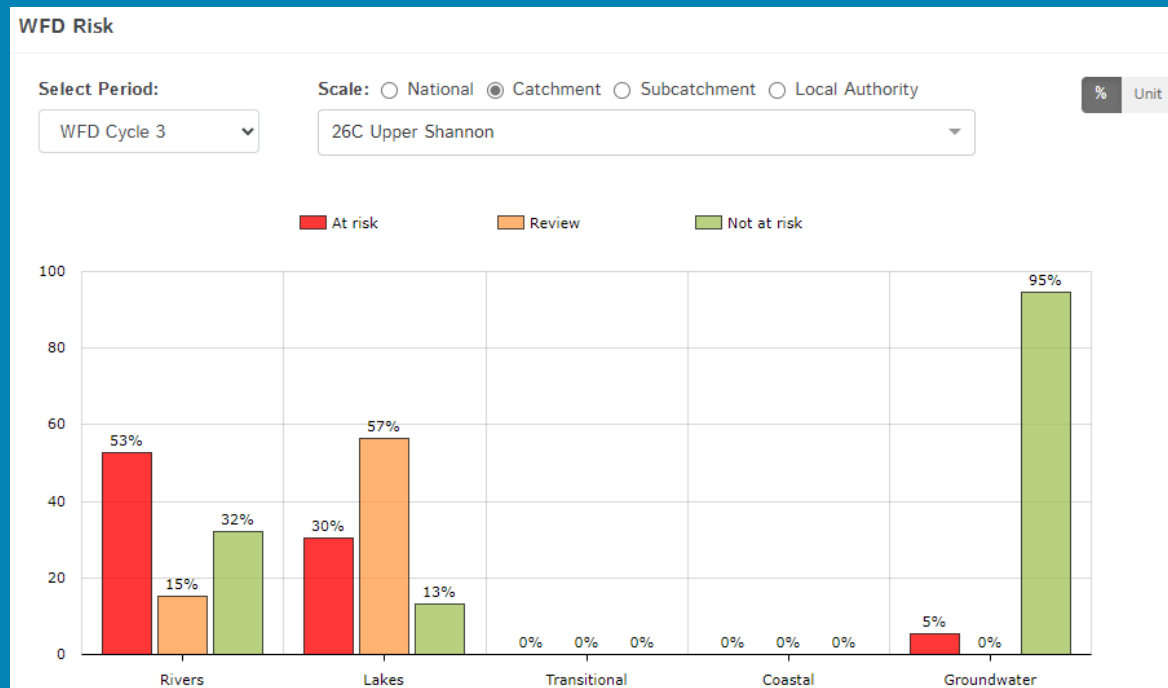
Water Quality Changes

WFD Risk

Significant Pressures

Action

Summary Information



WFD Risk for the Upper Shannon Catchment based on 2016-2021 data.

View Online Dashboard: <https://www.catchments.ie/data/#/dashboard/waterquality>

There are currently no heavily modified water bodies (HMWBs) in the Upper Shannon Catchment.

There is one artificial waterbodies in the Upper Shannon Catchment; It is currently *Not at Risk*.

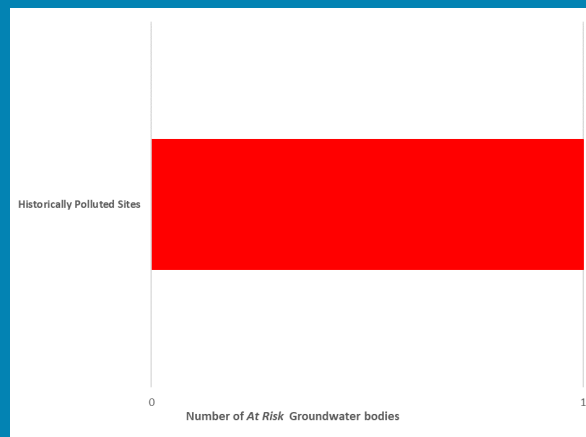
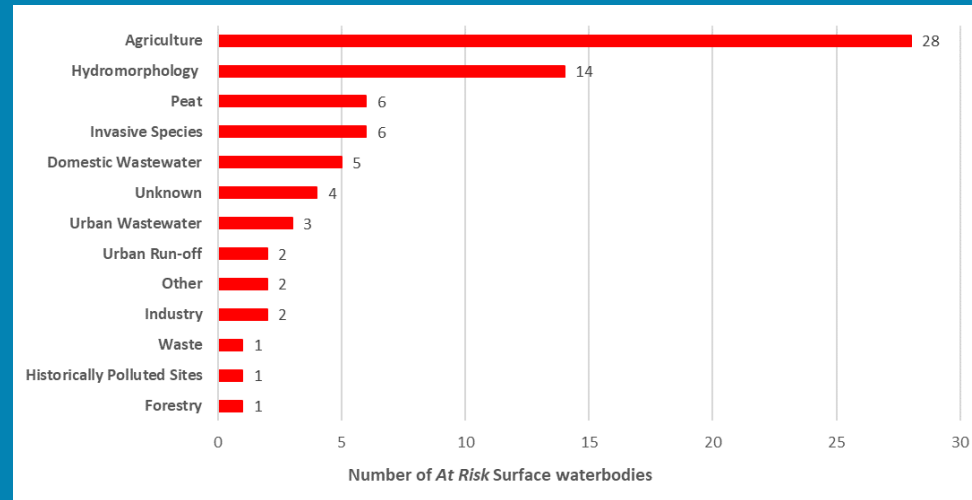
- Royal Canal Main Line (Upper Shannon C)

The [EPA's characterisation outcome report](#) has more information on WFD Risk

Click [here](#) for more information on significant pressures

Significant Pressures driving risk

Significant pressure types impacting the 38 *At Risk* surface waterbodies and one groundwater body are broken down in the figures below.



The issues driven by these pressures are mainly nutrient pollution, altered morphological condition (habitat) and organic pollution impacts for surface water, and nutrient pollution impact for groundwater. For more information, see <https://www.catchments.ie/data/#/dashboard/pressure?k=i351zs>.

Go to the Summary Information section to get significant pressure and issue data for At Risk waterbodies within the Upper Shannon Catchment.

Introduction

Water Quality Summary

Water Quality Changes

WFD Risk

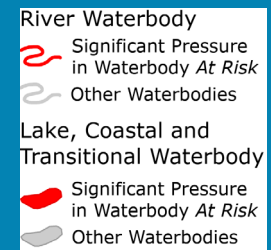
Significant Pressures

Action

Summary Information

Significant Pressures

Agriculture is the top significant pressure impacting 72% of the 39 *At Risk* waterbodies within the Upper Shannon Catchment, followed by 36% impacted by hydromorphological pressures, and 15% by both invasive species and peat.



Introduction

Water Quality Summary

Water Quality Changes

WFD Risk

Significant Pressures

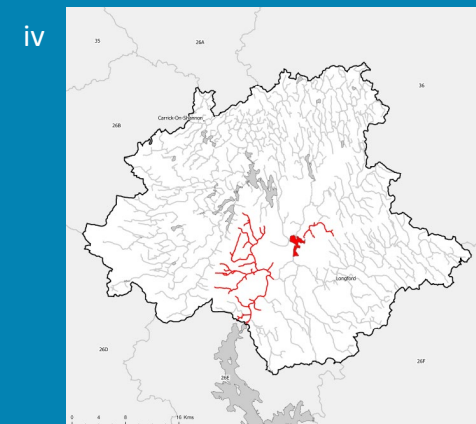
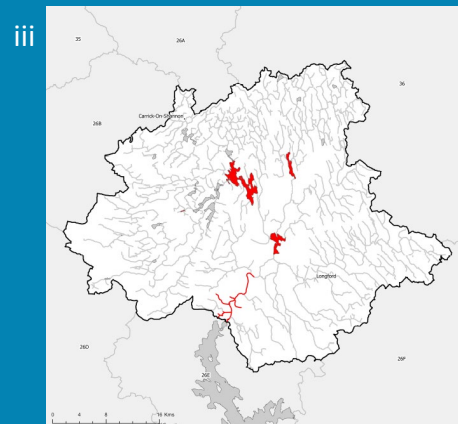
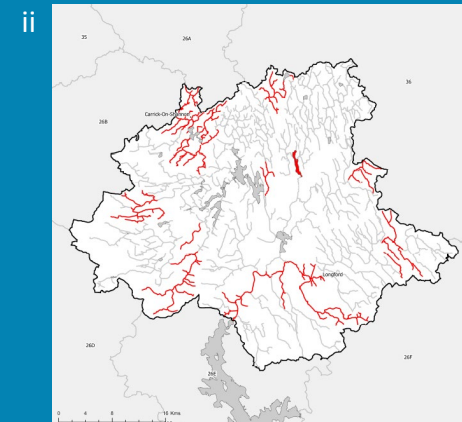
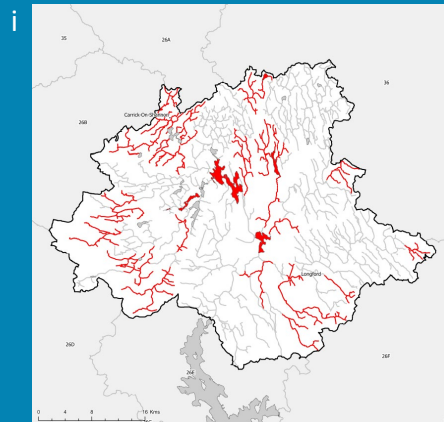
Action

Summary Information

The catchments.ie dashboards will show all significant pressures identified for this catchment.

www.catchments.ie/data/#/dashboard/pressure

Go to the [EPA Water Maps](#) for the locations of all significant pressure types identified for this catchment



Locations of At Risk surface waterbodies impacted by i) Agriculture, ii) Hydromorphological Pressures, iii) Invasive Species and iv) Peat.

Priority Areas for Action

A number of waterbodies have been prioritised through the selection of Areas for Action. There were four Priority Areas for Action identified for the second river basin management planning cycle in the Upper Shannon Catchment. This has increased to a total of six Areas for Restoration and one Catchment Project for the third cycle. ***Go to the summary information section to get Area for Action information for waterbodies within the Upper Shannon Catchment.***

Introduction

Water Quality Summary

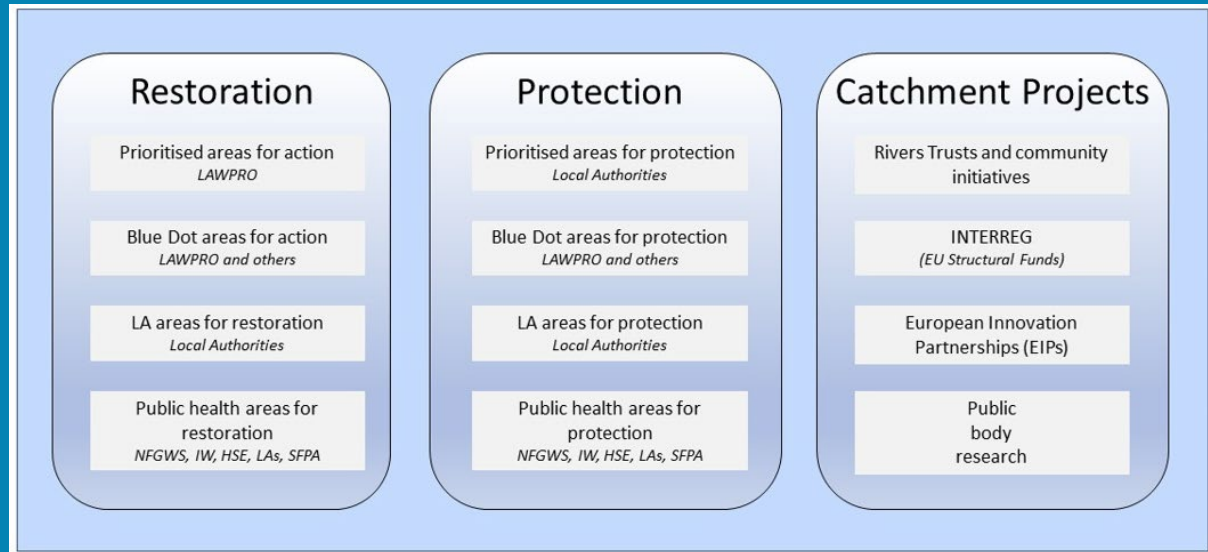
Water Quality Changes

WFD Risk

Significant Pressures

Action

Summary Information



Types of Areas for Action under the third cycle River Basin Management Plan

- View the current progress of Areas for Action and Summary Reports completed by LAWPRO, on catchments.ie and the EPA Water Map:
 - <https://www.catchments.ie/data/#/areaforaction>
 - https://gis.epa.ie/EPAMaps/default?eastng=?&northing=?&lid=EPA:WFD_AreasForAction
- LAWPRO have also published detailed desktop studies on Prioritised Areas for Action (PAAs) which are available their website: <https://lawwaters.ie/desktop-studies/>
- Information on Areas for Action for the second cycle is available in Cycle 2 Catchment Assessments which have been archived on catchments.ie:
<https://www.catchments.ie/download/cycle-2-catchment-assessments-published-september-2018/>

Summary information for all waterbodies in the Upper Shannon Catchment

The next page provides a table with a breakdown of key information for all waterbodies in this catchment. The key is provided below. Additional information for each waterbody is available on <https://www.catchments.ie/data>, including a breakdown of status, a monitoring schedule for monitored waterbodies and downloadable chemistry results, where available.

<p>Protected Area categories</p>	<p>BW: Bathing Water DW: Drinking Water Fish: Salmonid Waters NSA: Nutrient Sensitive Areas SAC: Special Area of Conservation, Natura 2000 (water dependent habitats and species) SF: Shellfish Area SPA: Special Area of Protection, Natura 2000 (water dependent habitat and species)</p>
<p>Significant pressure* types categories</p> <p><i>* For At Risk waterbodies only</i></p>	<p>Ab: Abstractions Ag: Agriculture Aq: Aquaculture At: Atmospheric DWW: Domestic Wastewater For: Forestry HPS: Historically polluted sites HYMO: Hydromorphology Ind: Industry IS: Invasive Species M+Q: Mines and Quarries Peat: Peat Drainage and Extraction UR: Urban Run-Off UWW: Urban Wastewater Was: Waste WT: Water Treatment</p>

Introduction

Water Quality Summary

Water Quality Changes

WFD Risk

Significant Pressures

Action

Summary Information

Catchment Code	Waterbody (WB) Code	WB Name	WB Type	Local Authority	Protected Area	Status 10-15	Status 13-18	Status 16-21	Environmental Objective	Environmental Objective Date	WFD Risk 16-21	Significant Issue(s)	Significant Pressure(s)	Area for Action (AFA)	AFA (lead, type)	Link to WB page on catchments.ie	Link to WB on EPA Water Map
26C	IE_26C_AWB_RCMLW	Royal Canal Main Line (Upper Shannon C)	Canal	Roscommon County Council		Good	Good	Good	Good	2021 or earlier	Not at risk					View WB Page	View WB on EPA Water Map
26C, 26F, 3, 36, 6, 7	IE_NW_G_061	Cavan	Groundwater	Cavan County Council	DWPA; SAC	Good	Good	Good	Good	2021 or earlier	Not at risk					View WB Page	View WB on EPA Water Map
26C, 36	IE_NW_G_062	Killashandra	Groundwater	Cavan County Council	DWPA; SAC	Good	Good	Good	Good	2021 or earlier	Not at risk					View WB Page	View WB on EPA Water Map
26C	IE_SH_G_007	Annaghmore	Groundwater	Leitrim County Council	DWPA; SAC	Good	Good	Good	Good	2021 or earlier	Not at risk					View WB Page	View WB on EPA Water Map
26A, 26B, 26C, 26D, 26E, 34, 36	IE_SH_G_048	Carrick on Shannon	Groundwater	Roscommon County Council	DWPA; SAC	Good	Good	Good	Good	2021 or earlier	Not at risk					View WB Page	View WB on EPA Water Map
26A, 26B, 26C, 34, 35, 36	IE_SH_G_073	Curlew Mountains	Groundwater	Sligo County Council	DWPA; SAC	Good	Good	Good	Good	2021 or earlier	Not at risk					View WB Page	View WB on EPA Water Map
26C, 26E	IE_SH_G_075	Curraghroe	Groundwater	Roscommon County Council	DWPA; SAC	Good	Good	Good	Good	2021 or earlier	Not at risk					View WB Page	View WB on EPA Water Map
26C, 26D, 26E, 26G	IE_SH_G_091	Funshinagh	Groundwater	Roscommon County Council	DWPA; SAC	Good	Good	Good	Good	2021 or earlier	Not at risk					View WB Page	View WB on EPA Water Map
25A, 25B, 26C, 26E, 26F, 26G, 36, 7	IE_SH_G_110	Inny	Groundwater	Westmeath County Council	DWPA; SAC	Good	Good	Good	Good	2021 or earlier	Not at risk					View WB Page	View WB on EPA Water Map
26C	IE_SH_G_120	Kilglass Dromod	Groundwater	Leitrim County Council	DWPA	Good	Good	Good	Good	2021 or earlier	Not at risk					View WB Page	View WB on EPA Water Map
26C, 26E, 26F, 36	IE_SH_G_149	Longford Ballinalee	Groundwater	Longford County Council	DWPA; SAC	Good	Good	Good	Good	2021 or earlier	Not at risk					View WB Page	View WB on EPA Water Map
26C	IE_SH_G_151	Historic Waste Facility (S22-02489)	Groundwater	Longford County Council	DWPA	Good	Good	Poor	Good	2022-2027	At risk	Nutrients	HPS			View WB Page	View WB on EPA Water Map
26C	IE_SH_G_156	Lough Ackrick	Groundwater	Roscommon County Council	DWPA	Good	Good	Good	Good	2021 or earlier	Not at risk					View WB Page	View WB on EPA Water Map
26C, 36	IE_SH_G_171	Mohill	Groundwater	Leitrim County Council	DWPA; SAC	Good	Good	Good	Good	2021 or earlier	Not at risk					View WB Page	View WB on EPA Water Map
26C	IE_SH_G_192	Newtown Forbes	Groundwater	Longford County Council	DWPA; SAC	Good	Good	Good	Good	2021 or earlier	Not at risk					View WB Page	View WB on EPA Water Map
26C	IE_SH_G_201	Scramoge North	Groundwater	Roscommon County Council	DWPA	Good	Good	Good	Good	2021 or earlier	Not at risk					View WB Page	View WB on EPA Water Map
26C, 26E	IE_SH_G_202	Scramoge South	Groundwater	Roscommon County Council	DWPA	Good	Good	Good	Good	2021 or earlier	Not at risk					View WB Page	View WB on EPA Water Map
26C, 26E	IE_SH_G_208	Slieve Bawn Telton	Groundwater	Roscommon County Council	DWPA	Good	Good	Good	Good	2021 or earlier	Not at risk					View WB Page	View WB on EPA Water Map
26B, 26C, 26D, 26E, 26G, 29, 30	IE_SH_G_225	Suck South	Groundwater	Galway County Council	DWPA; SAC	Good	Good	Good	Good	2021 or earlier	Not at risk					View WB Page	View WB on EPA Water Map
26A, 26C, 36	IEGBNI_NW_G_031	Newtown-Ballyconnell	Groundwater	Cavan County Council	DWPA; SAC	Good	Good	Good	Good	2021 or earlier	Not at risk					View WB Page	View WB on EPA Water Map
26C	IE_SH_26_281	Nafulla	Lake	Roscommon County Council	DWPA;	Unassigned	Unassigned	Moderate	Good	2022-2027	Review			Tulsk	LAWPRO, Restoration	View WB Page	View WB on EPA Water Map
26C	IE_SH_26_489	Fin Strokestown	Lake	Roscommon County Council	DWPA;	Unassigned	Unassigned	Good	Good	2021 or earlier	Not at risk			Tulsk	LAWPRO, Restoration	View WB Page	View WB on EPA Water Map
26C	IE_SH_26_582	Corbally	Lake	Roscommon County Council		Unassigned	Unassigned	Moderate	Good	2022-2027	Review			Killukin Shannon	LAWPRO, Restoration	View WB Page	View WB on EPA Water Map
26C	IE_SH_26_611	Shad	Lake	Roscommon County Council		Unassigned	Unassigned	Good	Good	2021 or earlier	Review			Tulsk	LAWPRO, Restoration	View WB Page	View WB on EPA Water Map
26C	IE_SH_26_624	Keeldra	Lake	Leitrim County Council	BW;	Unassigned	Unassigned	Moderate	Good	2022-2027	Review					View WB Page	View WB on EPA Water Map
26C	IE_SH_26_669	Annaghmore Lough	Lake	Roscommon County Council	SAC;	Good	Good	Good	Good	2021 or earlier	Not at risk			Tulsk	LAWPRO, Restoration	View WB Page	View WB on EPA Water Map
26C	IE_SH_26_700	Rinn	Lake	Leitrim County Council		Moderate	Bad	Poor	Good	2022-2027	At risk	Morphological, Nutrients, Organic, OtherSignificantImpacts	Ind, IS, Ag, DWTS, HYMO, Other	Lough Rinn Forbes	LAWPRO, Restoration	View WB Page	View WB on EPA Water Map
26C	IE_SH_26_706	Grange	Lake	Roscommon County Council	DWPA;	Moderate	Good	Moderate	Good	2022-2027	At risk	Hydrological, Morphological, Nutrients	Ag, IS			View WB Page	View WB on EPA Water Map
26C	IE_SH_26_710	Corry	Lake	Leitrim County Council		Unassigned	Moderate	Poor	Good	2022-2027	Review			Killukin Shannon	LAWPRO, Restoration	View WB Page	View WB on EPA Water Map
26C	IE_SH_26_723	Forbes	Lake	Longford County Council	DWPA; SAC; SPA;	Moderate	Moderate	Moderate	Good	2022-2027	At risk	Morphological, Nutrients	Ag, IS, Peat	Lough Rinn Forbes	LAWPRO, Restoration	View WB Page	View WB on EPA Water Map
26C	IE_SH_26_734	Donogher	Lake	Leitrim County Council	DWPA;	Unassigned	Moderate	Moderate	Good	2022-2027	Review					View WB Page	View WB on EPA Water Map
26C	IE_SH_26_738	Rowan	Lake	Leitrim County Council		Moderate	Moderate	Moderate	Good	2022-2027	At risk	Nutrients	Ag	Lough Rowan	LAWPRO, Restoration	View WB Page	View WB on EPA Water Map
26C	IE_SH_26_745	Adoon	Lake	Leitrim County Council		Unassigned	Unassigned	Moderate	Good	2022-2027	Review					View WB Page	View WB on EPA Water Map
26C	IE_SH_26_746	Grange Lough	Lake	Roscommon County Council		Unassigned	Good	Moderate	Good	2022-2027	At risk	Nutrients	Ag			View WB Page	View WB on EPA Water Map
26C	IE_SH_26_747a	Bofin LM	Lake	Leitrim County Council		Moderate	Poor	Moderate	Good	2022-2027	At risk	Hydrological, Morphological, Nutrients, UnknownImpactType	IS, Ag, Other			View WB Page	View WB on EPA Water Map

26C	IE_SH_26_747b	Boderg	Lake	Roscommon County Council		Moderate	Moderate	Moderate	Good	2022-2027	At risk	Hydrological, Morphological, Nutrients, UnknownimpactType	IS, Ag			View WB Page	View WB on EPA Water Map
26C	IE_SH_26_747c	Tap South	Lake	Roscommon County Council		Unassigned	Moderate	Moderate	Good	2022-2027	Review					View WB Page	View WB on EPA Water Map
26C	IE_SH_26_747d	Tap North	Lake	Leitrim County Council		Unassigned	Moderate	Moderate	Good	2022-2027	Review					View WB Page	View WB on EPA Water Map
26C	IE_SH_26_748	Kilglass	Lake	Roscommon County Council		Unassigned	Good	Moderate	Good	2022-2027	Review					View WB Page	View WB on EPA Water Map
26C	IE_SH_26_749	Grange North	Lake	Roscommon County Council		Unassigned	Good	Moderate	Good	2022-2027	Review					View WB Page	View WB on EPA Water Map
26C, 26E, 26G	IE_SH_26_750a	Ree	Lake	Roscommon County Council	SAC; SPA; NSA;	Moderate	Good	Good	Good	2021 or earlier	Not at risk					View WB Page	View WB on EPA Water Map
26C	IE_SH_26_751	Nablahy South	Lake	Roscommon County Council		Unassigned	Unassigned	Moderate	Good	2022-2027	Review					View WB Page	View WB on EPA Water Map
26C	IE_SH_26_752	Nablahy North	Lake	Roscommon County Council		Unassigned	Unassigned	Moderate	Good	2022-2027	Review					View WB Page	View WB on EPA Water Map
26C	IE_SH_26A430910	ANNAGHCOOLEEN_010	River	Longford County Council	SAC; SPA;	Unassigned	Moderate	Moderate	Good	2022-2027	At risk	Nutrients, Organic	Ag, Peat	Lough Rinn Forbes	LAWPRO, Restoration	View WB Page	View WB on EPA Water Map
26C	IE_SH_26B040080	BLACK (SOUTH LEITRIM)_010	River	Longford County Council		Good	Moderate	Moderate	Good	2022-2027	At risk	Sediment, Morphological	Ag, HYMO	Black (South Leitrim)	Longford County Council, Restoration	View WB Page	View WB on EPA Water Map
26C	IE_SH_26B040100	BLACK (SOUTH LEITRIM)_020	River	Longford County Council		Good	Good	Good	Good	2021 or earlier	Not at risk					View WB Page	View WB on EPA Water Map
26C	IE_SH_26B040200	BLACK (SOUTH LEITRIM)_030	River	Longford County Council		Good	Good	Good	Good	2021 or earlier	Not at risk					View WB Page	View WB on EPA Water Map
26C	IE_SH_26B040300	BLACK (SOUTH LEITRIM)_040	River	Leitrim County Council		Good	Good	Good	Good	2021 or earlier	Not at risk					View WB Page	View WB on EPA Water Map
26C	IE_SH_26B220790	BALLYNAKILL_010	River	Longford County Council		Unassigned	Good	Moderate	Good	2022-2027	Review					View WB Page	View WB on EPA Water Map
26C	IE_SH_26C010050	CAMLIN_010	River	Longford County Council		Poor	Moderate	Good	Good	2021 or earlier	Review			Camlin	LAWPRO, Restoration	View WB Page	View WB on EPA Water Map
26C	IE_SH_26C010200	CAMLIN_020	River	Longford County Council		Good	High	Moderate	Good	2022-2027	At risk	Sediment	HYMO	Camlin	LAWPRO, Restoration	View WB Page	View WB on EPA Water Map
26C	IE_SH_26C010600	CAMLIN_030	River	Longford County Council		Good	Good	Good	Good	2021 or earlier	Not at risk			Camlin	LAWPRO, Restoration	View WB Page	View WB on EPA Water Map
26C	IE_SH_26C010700	CAMLIN_040	River	Longford County Council		Good	Good	Good	Good	2021 or earlier	Not at risk			Camlin	LAWPRO, Restoration	View WB Page	View WB on EPA Water Map
26C	IE_SH_26C010800	CAMLIN_050	River	Longford County Council		Good	Good	Good	Good	2021 or earlier	Not at risk			Camlin	LAWPRO, Restoration	View WB Page	View WB on EPA Water Map
26C	IE_SH_26C010900	CAMLIN_060	River	Longford County Council	SAC; NSA;	Unassigned	Moderate	Moderate	Good	2022-2027	At risk	Morphological, Nutrients, Organic	UR, HYMO, Ag, UWW	Camlin	LAWPRO, Restoration	View WB Page	View WB on EPA Water Map
26C	IE_SH_26C011000	CAMLIN_070	River	Longford County Council	NSA;	Poor	Poor	Poor	Good	2022-2027	At risk	Morphological, Nutrients, Organic	HYMO, UR	Camlin	LAWPRO, Restoration	View WB Page	View WB on EPA Water Map
26C	IE_SH_26C050100	CLOONE_010	River	Leitrim County Council		Good	Good	Good	Good	2021 or earlier	Not at risk					View WB Page	View WB on EPA Water Map
26C	IE_SH_26C050250	CLOONE_020	River	Leitrim County Council		High	Good	Good	Good	2021 or earlier	Not at risk					View WB Page	View WB on EPA Water Map
26C	IE_SH_26C050400	CLOONE_030	River	Leitrim County Council		Good	Good	Good	Good	2021 or earlier	Not at risk					View WB Page	View WB on EPA Water Map
26C	IE_SH_26C150180	CURRAGHROE STREAM_010	River	Roscommon County Council		Poor	Poor	Poor	Good	2022-2027	At risk	Morphological, Nutrients	Peat			View WB Page	View WB on EPA Water Map
26C	IE_SH_26C200300	CLOONCOOSE STREAM_010	River	Longford County Council		Good	Moderate	Moderate	Good	2022-2027	At risk	Nutrients	HPS, Ag	Camlin	LAWPRO, Restoration	View WB Page	View WB on EPA Water Map
26C	IE_SH_26C220800	CREELAGHTA_010	River	Longford County Council		Good	Good	Good	Good	2021 or earlier	Not at risk					View WB Page	View WB on EPA Water Map
26C	IE_SH_26C240750	CUILMORE_010	River	Roscommon County Council		Unassigned	Poor	Moderate	Good	2022-2027	Review					View WB Page	View WB on EPA Water Map
26C	IE_SH_26D100810	DOON_010	River	Roscommon County Council	SAC;	Unassigned	Good	Moderate	Good	2022-2027	Review			Tulsk	LAWPRO, Restoration	View WB Page	View WB on EPA Water Map
26C	IE_SH_26D560860	DRUMBAD_010	River	Leitrim County Council		Unassigned	Poor	Moderate	Good	2022-2027	Review			Lough Rinn Forbes	LAWPRO, Restoration	View WB Page	View WB on EPA Water Map
26C	IE_SH_26E010100	ESLIN_010	River	Leitrim County Council		Moderate	Moderate	Moderate	Good	2022-2027	At risk	Morphological, Nutrients	Ag, HYMO	Lough Rowan	LAWPRO, Restoration	View WB Page	View WB on EPA Water Map
26C	IE_SH_26E010300	ESLIN_020	River	Leitrim County Council		Good	Good	Moderate	Good	2022-2027	At risk	Nutrients, Organic	Ind			View WB Page	View WB on EPA Water Map
26C	IE_SH_26E010400	ESLIN_030	River	Leitrim County Council		Moderate	Moderate	Moderate	Good	2022-2027	At risk	Nutrients	Ag			View WB Page	View WB on EPA Water Map
26C	IE_SH_26E010500	ESLIN_040	River	Leitrim County Council		Moderate	Moderate	Moderate	Good	2022-2027	At risk	Morphological, Nutrients	HYMO, Ag			View WB Page	View WB on EPA Water Map
26C	IE_SH_26F010040	FALLAN_010	River	Longford County Council	SAC;	Moderate	Moderate	Moderate	Good	2022-2027	At risk	Morphological	For, Ag	Camlin	LAWPRO, Restoration	View WB Page	View WB on EPA Water Map
26C	IE_SH_26F010200	FALLAN_020	River	Longford County Council		Good	Good	Good	Good	2021 or earlier	Not at risk			Camlin	LAWPRO, Restoration	View WB Page	View WB on EPA Water Map
26C	IE_SH_26F030200	FEORISH (TARMONBARRY)_010	River	Roscommon County Council		Poor	Poor	Poor	Good	2022-2027	At risk	Morphological, Nutrients	Peat			View WB Page	View WB on EPA Water Map
26C	IE_SH_26F030400	FEORISH (TARMONBARRY)_020	River	Roscommon County Council		Poor	Poor	Poor	Good	2022-2027	At risk	Morphological, Nutrients	Peat			View WB Page	View WB on EPA Water Map
26C	IE_SH_26F060400	FARDRUMMAN STREAM_010	River	Leitrim County Council		Moderate	Good	Good	Good	2021 or earlier	Not at risk					View WB Page	View WB on EPA Water Map
26C	IE_SH_26G470700	GORTGALLAN_010	River	Roscommon County Council		Unassigned	Poor	Moderate	Good	2022-2027	Review					View WB Page	View WB on EPA Water Map
26C	IE_SH_26K020100	KILLUKIN_010	River	Roscommon County Council		Moderate	Moderate	Moderate	Good	2022-2027	At risk	Nutrients	DWTS, Ag	Killukin Shannon	LAWPRO, Restoration	View WB Page	View WB on EPA Water Map

26C	IE_SH_26K020700	KILLUKIN_020	River	Roscommon County Council		Good	Moderate	Moderate	Good	2022-2027	At risk	Sediment, Nutrients	DWTS, Unknown, Ag	Killukin Shannon	LAWPRO, Restoration	View WB Page	View WB on EPA Water Map
26C	IE_SH_26K070500	KINARD_010	River	Roscommon County Council		Good	Good	Good	Good	2021 or earlier	Not at risk					View WB Page	View WB on EPA Water Map
26C	IE_SH_26L040500	LISSAPHOBLE_010	River	Roscommon County Council		Poor	Poor	Poor	Good	2022-2027	At risk	Hydrological, Morphological, Nutrients	HYMO, Ag	Tulsk	LAWPRO, Restoration	View WB Page	View WB on EPA Water Map
26C	IE_SH_26L120100	LOUGH BANNOW STREAM_010	River	Longford County Council		Unassigned	Good	Moderate	Good	2022-2027	Review					View WB Page	View WB on EPA Water Map
26C	IE_SH_26M030100	MOUNTAIN (ROSCOMMON)_010	River	Roscommon County Council		Moderate	Poor	Poor	Good	2022-2027	At risk	Sediment, Morphological, Nutrients	Ag, Unknown, DWTS	Tulsk	LAWPRO, Restoration	View WB Page	View WB on EPA Water Map
26C	IE_SH_26M130080	MANTUA STREAM_010	River	Roscommon County Council		Good	Good	Good	Good	2021 or earlier	Not at risk					View WB Page	View WB on EPA Water Map
26C	IE_SH_26O060300	OWENUR_010	River	Roscommon County Council		Good	Moderate	Poor	Good	2022-2027	At risk	Sediment, Morphological, Nutrients	Ag, HYMO, Unknown			View WB Page	View WB on EPA Water Map
26C	IE_SH_26O060500	OWENUR_020	River	Roscommon County Council		Good	Poor	Good	Good	2021 or earlier	Not at risk					View WB Page	View WB on EPA Water Map
26C	IE_SH_26O060890	OWENUR_030	River	Roscommon County Council		Unassigned	Good	Good	Good	2021 or earlier	Review					View WB Page	View WB on EPA Water Map
26C	IE_SH_26R020100	RINN_010	River	Leitrim County Council		Poor	Poor	Poor	Good	2022-2027	At risk	Nutrients, Organic, UnknownImpactType	Ag, Was, UWW	Lough Rinn Forbes	LAWPRO, Restoration	View WB Page	View WB on EPA Water Map
26C	IE_SH_26R020200	RINN_020	River	Leitrim County Council		Moderate	Moderate	Moderate	Good	2022-2027	At risk	Nutrients	Ag	Lough Rinn Forbes	LAWPRO, Restoration	View WB Page	View WB on EPA Water Map
26C	IE_SH_26R020400	RINN_030	River	Leitrim County Council	SAC;	Moderate	Moderate	Moderate	Good	2022-2027	At risk	Nutrients	Ag	Lough Rinn Forbes	LAWPRO, Restoration	View WB Page	View WB on EPA Water Map
26C	IE_SH_26R040700	RHINE_010	River	Longford County Council		Poor	Poor	Poor	Good	2022-2027	At risk	Morphological, Nutrients, Organic	Ag, UWW	Camlin	LAWPRO, Restoration	View WB Page	View WB on EPA Water Map
26C	IE_SH_26R050900	RELAGH_010	River	Leitrim County Council		Good	Good	Good	Good	2021 or earlier	Not at risk					View WB Page	View WB on EPA Water Map
26C	IE_SH_26S010050	SCRAMOGE_010	River	Roscommon County Council		Moderate	Moderate	Moderate	Good	2022-2027	At risk	Nutrients	Ag	Tulsk	LAWPRO, Restoration	View WB Page	View WB on EPA Water Map
26C	IE_SH_26S010200	SCRAMOGE_020	River	Roscommon County Council		Moderate	Good	Good	Good	2021 or earlier	Not at risk			Tulsk	LAWPRO, Restoration	View WB Page	View WB on EPA Water Map
26C	IE_SH_26S010300	SCRAMOGE_030	River	Roscommon County Council		Good	Good	Moderate	Good	2022-2027	At risk	Sediment, Nutrients	Ag	Tulsk	LAWPRO, Restoration	View WB Page	View WB on EPA Water Map
26C	IE_SH_26S010600	SCRAMOGE_040	River	Roscommon County Council		Poor	Poor	Poor	Good	2022-2027	At risk	Morphological	HYMO	Tulsk	LAWPRO, Restoration	View WB Page	View WB on EPA Water Map
26C	IE_SH_26S021010	SHANNON (Upper)_060	River	Roscommon County Council	DWPA;	Moderate	Poor	Moderate	Good	2022-2027	At risk	Morphological, Nutrients	Ag, HYMO, DWTS	Killukin Shannon	LAWPRO, Restoration	View WB Page	View WB on EPA Water Map
26C	IE_SH_26S021415	SHANNON (Upper)_070	River	Leitrim County Council		Moderate	Moderate	Moderate	Good	2022-2027	At risk	UnknownImpactType	Unknown			View WB Page	View WB on EPA Water Map
26C	IE_SH_26S021510	SHANNON (Upper)_080	River	Longford County Council	SAC; SPA; NSA;	Moderate	Poor	Good	Good	2021 or earlier	Review			Lough Rinn Forbes	LAWPRO, Restoration	View WB Page	View WB on EPA Water Map
26C	IE_SH_26S021530	SHANNON (Upper)_090	River	Longford County Council	SAC; SPA; NSA;	Moderate	Moderate	Poor	Good	2022-2027	At risk	Hydrological, Morphological	Ag, HYMO			View WB Page	View WB on EPA Water Map
26C	IE_SH_26S021600	SHANNON (Upper)_100	River	Longford County Council	SAC; SPA; NSA;	Poor	Poor	Poor	Good	2022-2027	At risk	Morphological, UnknownImpactType	HYMO, IS, Peat			View WB Page	View WB on EPA Water Map
26C	IE_SH_26S080200	STROKESTOWN_010	River	Roscommon County Council		Poor	Poor	Poor	Good	2022-2027	At risk	Morphological	HYMO	Tulsk	LAWPRO, Restoration	View WB Page	View WB on EPA Water Map
26C	IE_SH_26S130250	SHAD LOUGH STREAM_010	River	Roscommon County Council		Good	Poor	Good	Good	2021 or earlier	Not at risk			Tulsk	LAWPRO, Restoration	View WB Page	View WB on EPA Water Map