



**Cycle 3**

**HA 26B Upper Shannon (Boyle) Catchment  
Report, May 2024**



Introduction

Water Quality  
Summary

High Status  
Objectives

Water Quality  
Changes

WFD Risk

Significant  
Pressures

Action

Summary  
Information

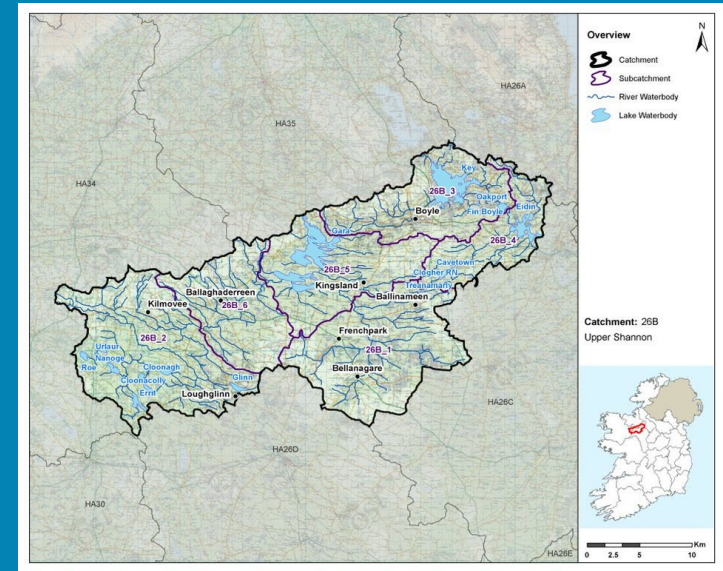
# Introduction

This report provides an overview of the water quality in the Upper Shannon (Boyle) Catchment and the pressures impacting on water quality. This report is based on data up to 2021. The latest water quality data, dashboards and maps throughout this report are available on [catchments.ie](https://catchments.ie) and [EPA Water Map](https://epa.maps.ie).

The Upper Shannon (Boyle) Catchment includes an area of 674km<sup>2</sup> and is characterised by old red sandstone uplands running along the northern catchment boundary, the highest of which are the Curlew Mountains and karstified limestone lowlands in the southern half of the catchment.

The Upper Shannon (Boyle) Catchment is divided into six subcatchments and has 43 surface water bodies and 14 groundwater bodies.

[View the Upper Shannon  
\(Boyle\) Catchment  
on the EPA Water Map](#)



Overview of Subcatchments in the Upper Shannon  
(Boyle) Catchment

## Previous Catchment Assessments

Previous catchment assessments, which provide additional historic context and information, are archived on [catchments.ie](https://catchments.ie):

- [Cycle 2 Catchment Assessments – published September 2018](#)
- [Cycle 3 Draft Catchment Assessments – published September 2021](#)

## Online Dashboards

Links to online dashboards are provided in this report – these numbers may vary from those in this document as time progresses and the online dashboards are updated based on the latest data and scientific assessments.

# Water Quality Summary

Introduction

Water Quality Summary

High Status Objectives

Water Quality Changes

WFD Risk

Significant Pressures

Action

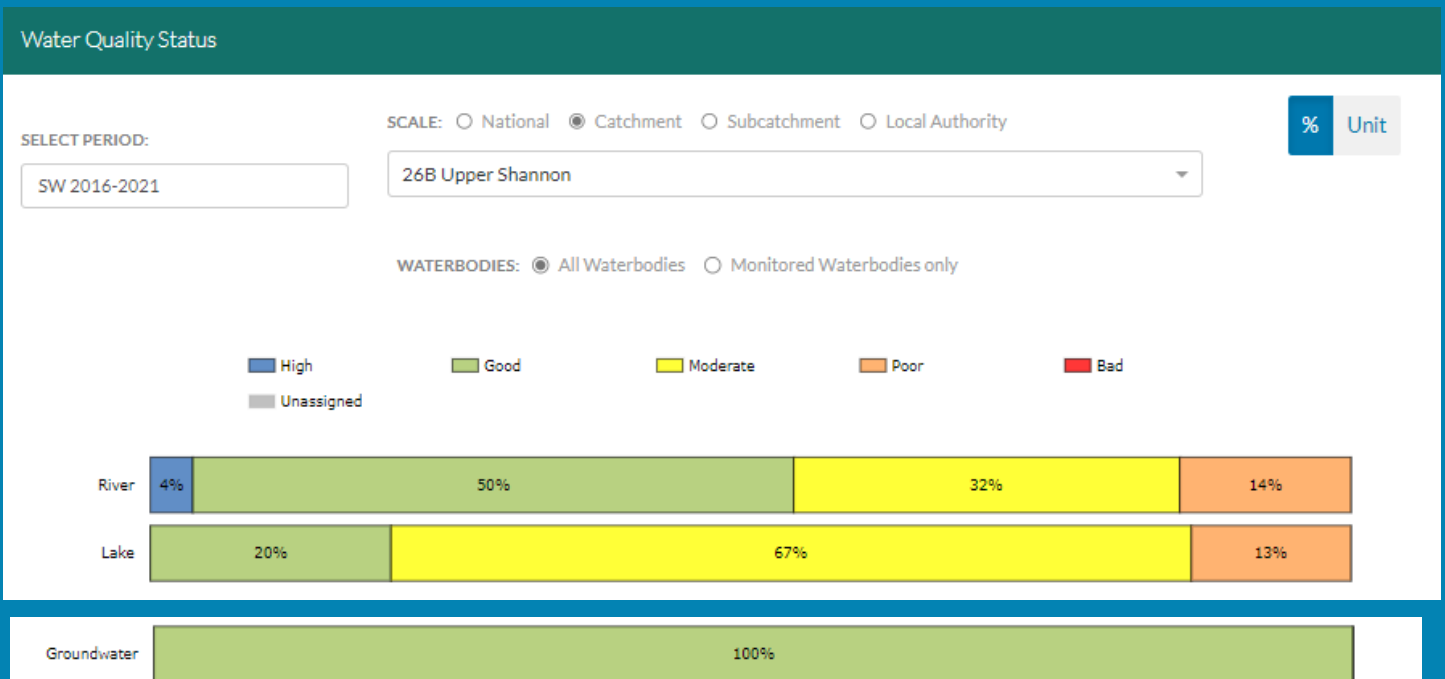
Summary Information

The dashboard below provides a breakdown of water quality status for surface and groundwater bodies in the Upper Shannon (Boyle) Catchment.

A total of 42% of surface waterbodies were at Good or High Ecological Status in the 2016-2021 monitoring period. One Hundred percent of groundwater bodies were at Good status.

**Go to EPA Water Maps for WFD Status**

[EPA Water Map](#)



Water quality status 2016-2021 for the Upper Shannon (Boyle) Catchment.  
**View Online Dashboard:** <https://www.catchments.ie/data/#/dashboard/waterquality>

# High Status Objective Waterbodies

Introduction

High status waters are prioritised for protection and action.

There is one waterbody with a **High Ecological Status Objective** (HSO) in the Upper Shannon (Boyle) Catchment and is currently meeting its environmental objective of High.

Water Quality Summary

High Status Objectives

Grants for septic tank upgrades may be available in high status objective catchment areas - you can learn more and check your Eircode for eligibility here: <https://www.gov.ie/en/publication/6cc1e-domestic-waste-water-treatment-systems-septic-tanks>

[View HSO river waterbodies in this catchment.](#)

See *Status and Risk / High Status Objective* for other waterbody types.

Water Quality Changes

## Water Quality Status - High Status Objective Waterbodies

SELECT TYPE:

All Surface Waters

SCALE:  Catchment  Local Authority

26B Upper Shannon

	SW 2007-2009	SW 2010-2012	SW 2010-2015	SW 2013-2018	SW 2016-2021
LUNG_040 (River)	Good	High	High	Good	High

WFD Risk

Significant Pressures

*Water quality status for High Ecological Status Objective waterbodies.*

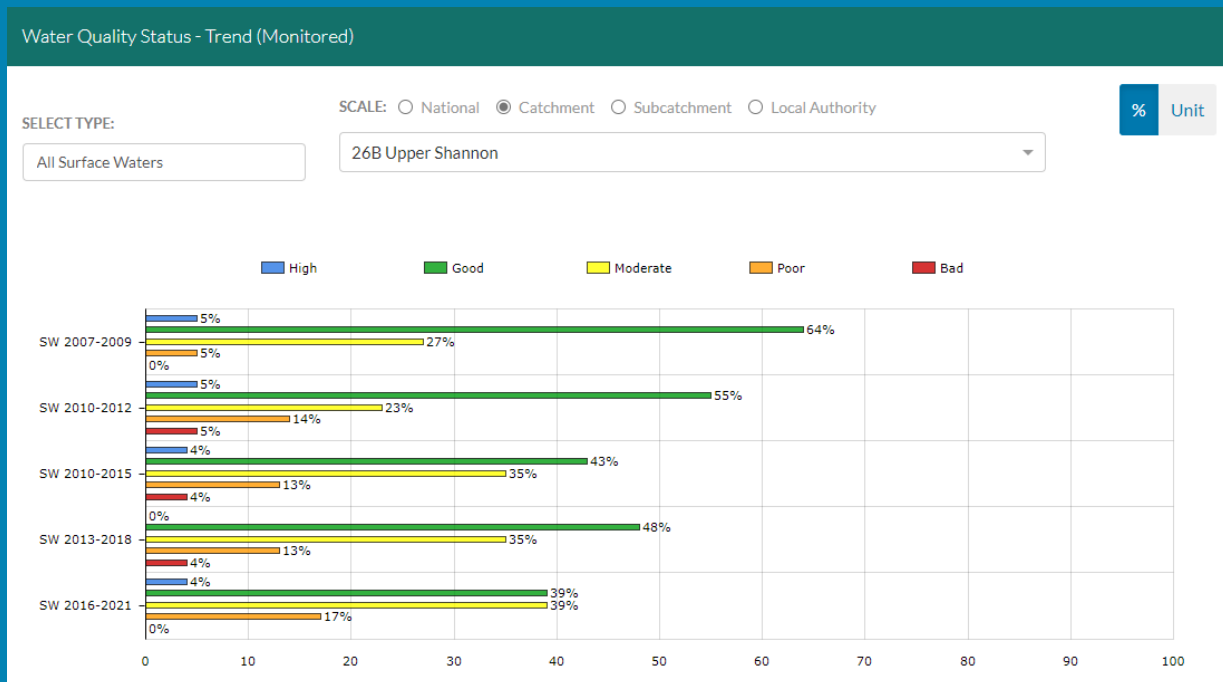
**View Online Dashboard:** <https://www.catchments.ie/data/#/dashboard/waterquality>

Action

Summary Information

# Water Quality Changes

Below illustrates the changes in ecological status in monitored surface waterbodies over the last five monitoring cycles in the Upper Shannon (Boyle) Catchment. Nationally while there have been improvements in some waterbodies, these have been offset by declines elsewhere.



Ecological status trends for monitored surface waterbodies over the last five monitoring cycles in the Upper Shannon (Boyle) Catchment. **View online dashboard:** <https://www.catchments.ie/data/#/dashboard/waterquality>

A total of 32 (56%) waterbodies are currently meeting their environmental objective of Good or High Ecological Status.

	Total	Achieving Environmental Objectives (2016-2021)	High Status Environmental Objectives Waterbodies	Achieving High Status Environmental Objectives (2016-2021)
<b>Rivers</b>	28	15 (54%)	1	1 (100%)
<b>Canals</b>	-	-	-	-
<b>Lakes</b>	15	3 (20%)	-	-
<b>Transitional</b>	-	-	-	-
<b>Coastal</b>	-	-	-	-
<b>Groundwater</b>	14	14 (100%)	-	-

Introduction

Water Quality Summary

High Status Objectives

Water Quality Changes

WFD Risk

Significant Pressures

Action

Summary Information

# WFD Risk

Introduction

Water Quality Summary

High Status Objectives

Water Quality Changes

WFD Risk

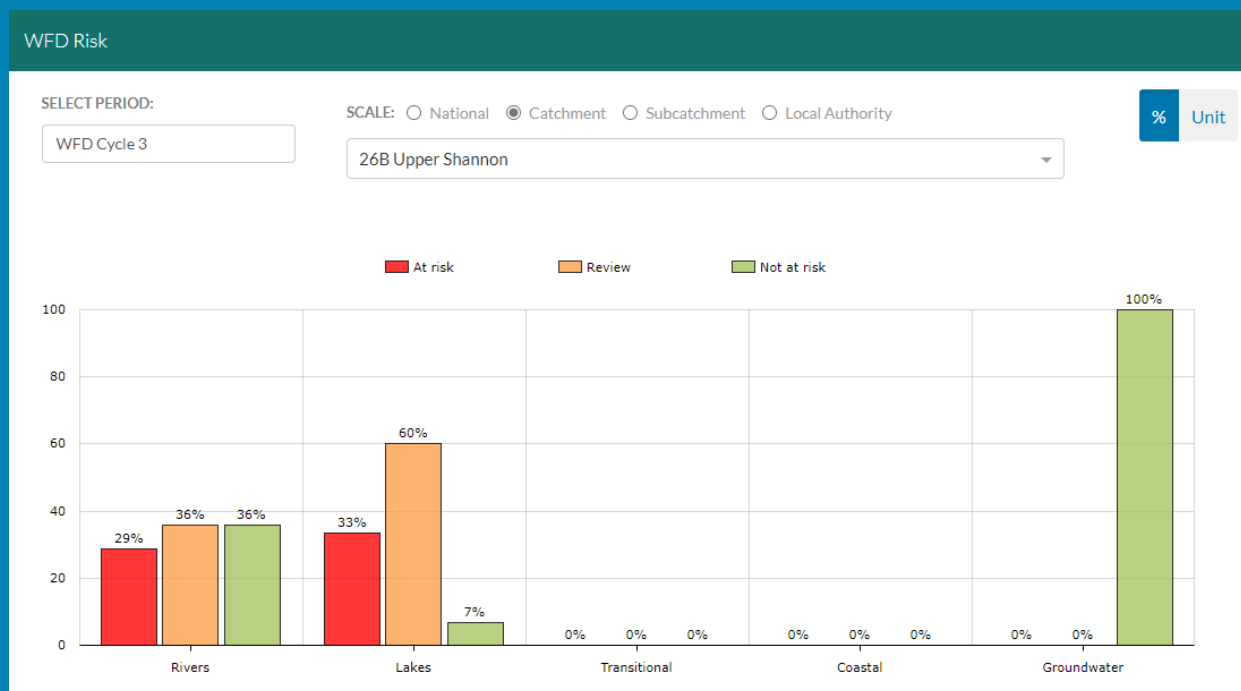
Significant Pressures

Action

Summary Information

A total of 13 (23%) waterbodies are *At Risk* of not meeting their environmental objective in the Upper Shannon (Boyle) Catchment, while 19 (33%) are under *Review* and 25 (44%) are *Not At Risk*.

[Go to EPA Water Map to see WFD Risk for this catchment](#)



WFD Risk for the Upper Shannon (Boyle) Catchment based on 2016-2021 data.

View Online Dashboard: <https://www.catchments.ie/data/#/dashboard/waterquality>

There are currently no heavily modified water bodies (HMWBs) in the Upper Shannon (Boyle) Catchment.

There are no artificial waterbodies in the Upper Shannon (Boyle) Catchment.

The [EPA's characterisation outcome report](#) has more information on WFD Risk

Introduction

Water Quality  
Summary

High Status  
Objectives

Water Quality  
Changes

WFD Risk

Significant  
Pressures

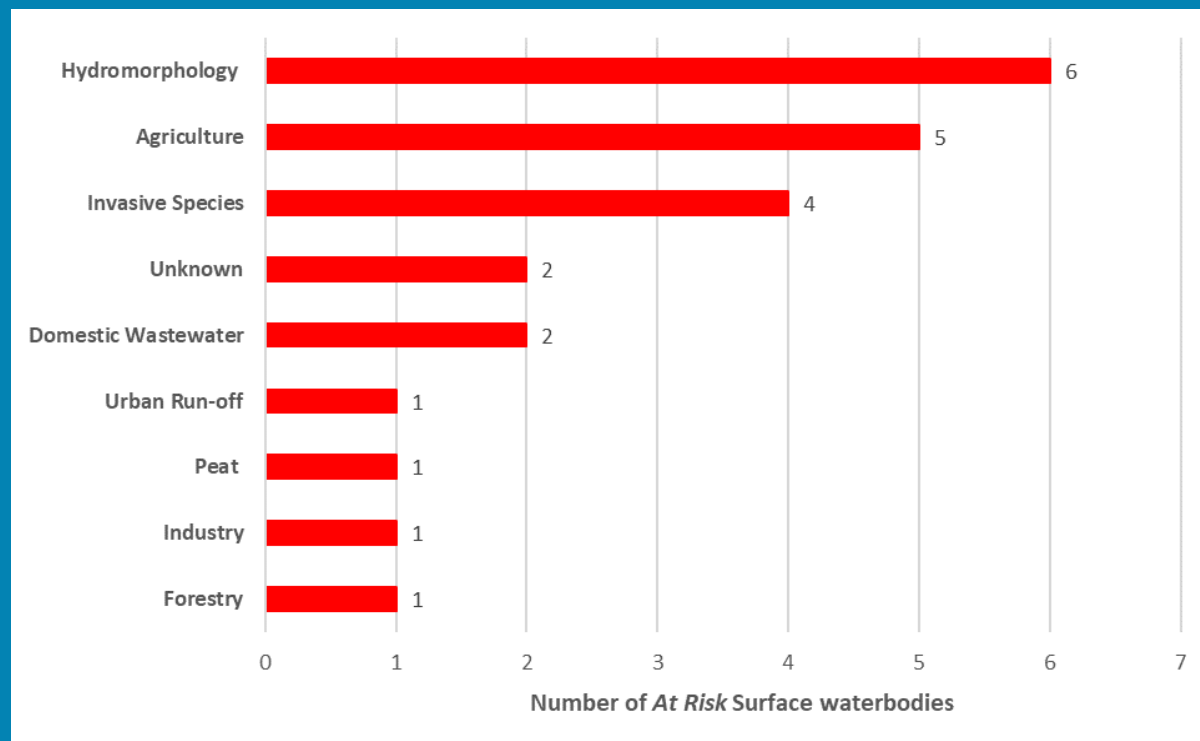
Action

Summary  
Information

## Significant Pressures driving risk

Click [here](#) for more information on significant pressures

Significant pressure types impacting the 13 *At Risk* surface waterbodies are broken down in the figures below.



The issues driven by these pressures are mainly altered morphological condition (habitat), nutrient pollution and organic pollution impacts for surface water. For more information, see <https://www.catchments.ie/data/#/dashboard/pressure?k=i351zs>.

*Go to the Summary Information section to get significant pressure and issue data for At Risk waterbodies within the Upper Shannon (Boyle) Catchment.*

Introduction

Water Quality  
Summary

High Status  
Objectives

Water Quality  
Changes

WFD Risk

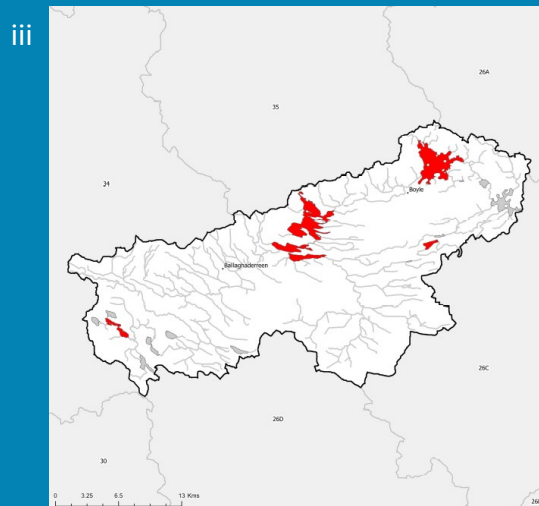
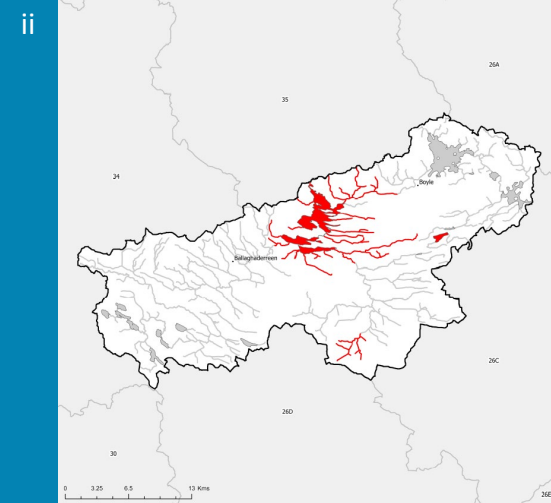
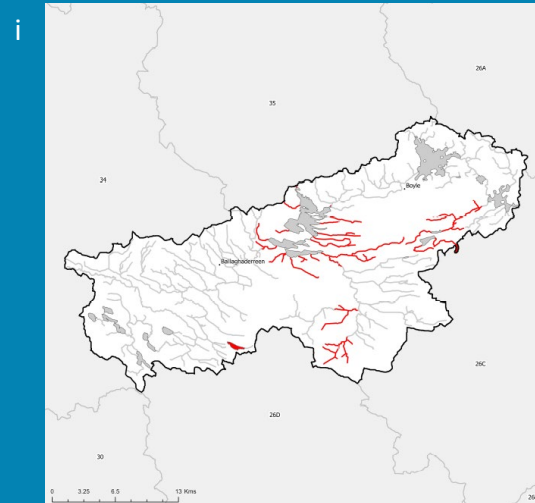
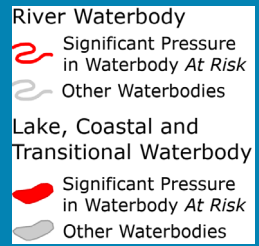
Significant  
Pressures

Action

Summary  
Information

# Significant Pressures

Hydromorphological Pressures is the top significant pressure impacting 46% of the 13 At Risk waterbodies within the Upper Shannon (Boyle) Catchment, followed by 38% impacted by Agriculture and 31% by Invasive Species.



**The catchments.ie dashboards will show all significant pressures identified for this catchment.**

[www.catchments.ie/data/#/dashboard/pressure](http://www.catchments.ie/data/#/dashboard/pressure)

**Go to the [EPA Water Maps](#) for the locations of all significant pressure types identified for this catchment**

*Locations of At Risk surface waterbodies impacted by i) Hydromorphological Pressures, ii) Agriculture and iii) Invasive Species.*

Introduction

Water Quality  
Summary

High Status  
Objectives

Water Quality  
Changes

WFD Risk

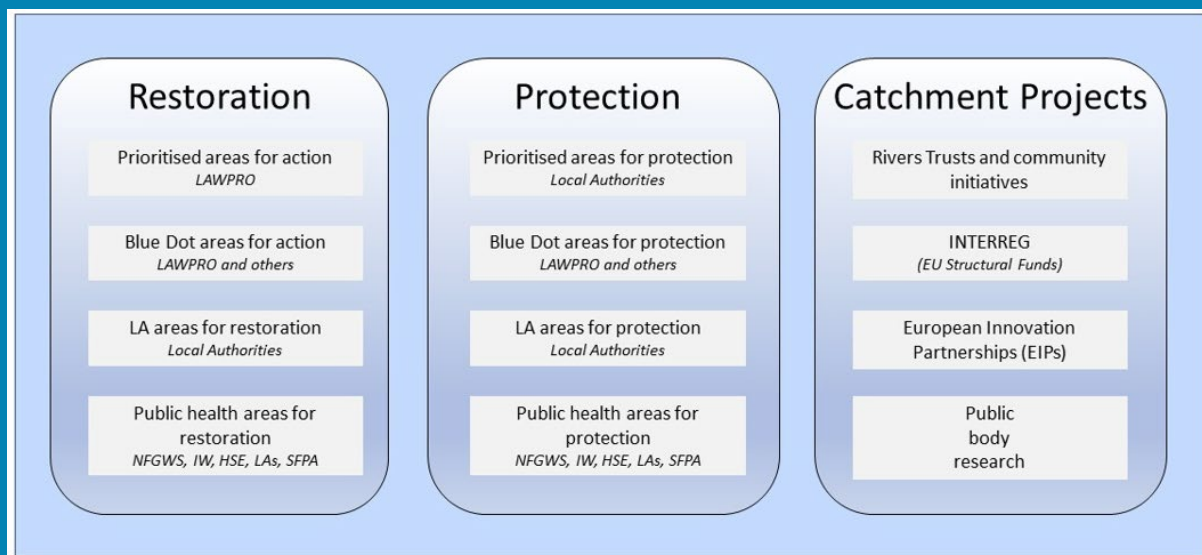
Significant  
Pressures

Action

Summary  
Information

## Priority Areas for Action

A number of waterbodies have been prioritised through the selection of Areas for Action. There were two Priority Areas for Action identified for the second river basin management planning cycle in the Upper Shannon (Boyle) Catchment. This has increased to a total of four Areas for Restoration and one Catchment Project for the third cycle. ***Go to the summary information section to get Area for Action information for waterbodies within the Upper Shannon (Boyle) Catchment.***



*Types of Areas for Action under the third cycle River Basin Management Plan*

- View the current progress of Areas for Action and Summary Reports completed by LAWPRO, on catchments.ie and the EPA Water Map:
  - <https://www.catchments.ie/data/#/areaforaction>
  - [https://gis.epa.ie/EPAMaps/default?easting=?&northing=?&lid=EPA:WFD\\_AreasForAction](https://gis.epa.ie/EPAMaps/default?easting=?&northing=?&lid=EPA:WFD_AreasForAction)
- LAWPRO have also published detailed desktop studies on Prioritised Areas for Action (PAAs) which are available their website: <https://lawaters.ie/desktop-studies/>
- Information on Areas for Action for the second cycle is available in Cycle 2 Catchment Assessments which have been archived on catchments.ie: <https://www.catchments.ie/download/cycle-2-catchment-assessments-published-september-2018/>

Introduction

Water Quality  
Summary

High Status  
Objectives

Water Quality  
Changes

WFD Risk

Significant  
Pressures

Action

Summary  
Information

## Summary information for all waterbodies in the Upper Shannon (Boyle) Catchment

The next page provides a table with a breakdown of key information for all waterbodies in this catchment. The key is provided below. Additional information for each waterbody is available on <https://www.catchments.ie/data>, including a breakdown of status, a monitoring schedule for monitored waterbodies and downloadable chemistry results, where available.

<b>Protected Area categories</b>	BW: Bathing Water DW: Drinking Water Fish: Salmonid Waters NSA: Nutrient Sensitive Areas SAC: Special Area of Conservation, Natura 2000 (water dependent habitats and species) SF: Shellfish Area SPA: Special Area of Protection, Natura 2000 (water dependent habitat and species)
<b>Significant pressure* types categories</b>  <i>* For At Risk waterbodies only</i>	Ab: Abstractions Ag: Agriculture Aq: Aquaculture At: Atmospheric DWW: Domestic Wastewater For: Forestry HPS: Historically polluted sites HYMO: Hydromorphology Ind: Industry IS: Invasive Species M+Q: Mines and Quarries Peat: Peat Drainage and Extraction UR: Urban Run-Off UWW: Urban Wastewater Was: Waste WT: Water Treatment

Catchment Code	Waterbody (WB) Code	WB Name	WB Type	Local Authority	Protected Area	Status 10-15	Status 13-18	Status 16-21	Environmental Objective	Environmental Objective Date	WFD Risk 16-21	Significant Issue(s)	Significant Pressure(s)	Area for Action (AFA)	AFA (lead, type)	Link to WB page on catchments.ie	Link to WB on EPA Water Map
26A, 26B, 26C, 26D, 26E, 34, 36	IE_SH_G_048	Carrick on Shannon	Groundwater	Roscommon County Council	DWPA; SAC	Good	Good	Good	Good	2021 or earlier	Not at risk					<a href="#">View WB Page</a>	<a href="#">View WB on EPA Water Map</a>
26B	IE_SH_G_049	Waste Facility (W0059-02)	Groundwater	Roscommon County Council	DWPA	Good	Good	Good	Good	2021 or earlier	Not at risk					<a href="#">View WB Page</a>	<a href="#">View WB on EPA Water Map</a>
26B, 26D, 30	IE_SH_G_053	Castlerea	Groundwater	Roscommon County Council	DWPA; SAC	Good	Good	Good	Good	2021 or earlier	Not at risk					<a href="#">View WB Page</a>	<a href="#">View WB on EPA Water Map</a>
26B, 26D	IE_SH_G_054	Castlerea Bellanagare	Groundwater	Roscommon County Council	DWPA; SAC	Good	Good	Good	Good	2021 or earlier	Not at risk					<a href="#">View WB Page</a>	<a href="#">View WB on EPA Water Map</a>
26B	IE_SH_G_067	GWDTE-Cloonshanville Bog (SAC000614)	Groundwater	Roscommon County Council	DWPA; SAC (GWDTE)	Good	Good	Good	Good	2021 or earlier	Not at risk					<a href="#">View WB Page</a>	<a href="#">View WB on EPA Water Map</a>
26A, 26B, 26C, 34, 35, 36	IE_SH_G_073	Curlew Mountains	Groundwater	Sligo County Council	DWPA; SAC	Good	Good	Good	Good	2021 or earlier	Not at risk					<a href="#">View WB Page</a>	<a href="#">View WB on EPA Water Map</a>
26B, 26D, 30, 34	IE_SH_G_224	Suck North	Groundwater	Roscommon County Council	DWPA; SAC	Good	Good	Good	Good	2021 or earlier	Not at risk					<a href="#">View WB Page</a>	<a href="#">View WB on EPA Water Map</a>
26B, 26C, 26D, 26E, 26G, 29, 30	IE_SH_G_225	Suck South	Groundwater	Galway County Council	DWPA; SAC	Good	Good	Good	Good	2021 or earlier	Not at risk					<a href="#">View WB Page</a>	<a href="#">View WB on EPA Water Map</a>
26B, 26D	IE_SH_G_241	GWDTE-Bellanagare Bog (SAC000592)	Groundwater	Roscommon County Council	DWPA; SAC (GWDTE)	Good	Good	Good	Good	2021 or earlier	Not at risk					<a href="#">View WB Page</a>	<a href="#">View WB on EPA Water Map</a>
26A, 26B, 34, 35	IE_WE_G_0028	Gorteen	Groundwater	Sligo County Council	DWPA; SAC	Good	Good	Good	Good	2021 or earlier	Not at risk					<a href="#">View WB Page</a>	<a href="#">View WB on EPA Water Map</a>
26B, 34, 35	IE_WE_G_0032	Kilkelly Charlestown	Groundwater	Mayo County Council	DWPA; SAC	Good	Good	Good	Good	2021 or earlier	Not at risk					<a href="#">View WB Page</a>	<a href="#">View WB on EPA Water Map</a>
26B, 26D, 30, 32, 34, 35	IE_WE_G_0033	Swinford	Groundwater	Mayo County Council	DWPA; SAC	Good	Good	Good	Good	2021 or earlier	Not at risk					<a href="#">View WB Page</a>	<a href="#">View WB on EPA Water Map</a>
26B, 30, 34	IE_WE_G_0063	Corrib Gravels	Groundwater	Mayo County Council	DWPA; SAC	Good	Good	Good	Good	2021 or earlier	Not at risk					<a href="#">View WB Page</a>	<a href="#">View WB on EPA Water Map</a>
26B, 34	IE_WE_G_0112	Gweestion-Moy Gravels Group 1	Groundwater	Mayo County Council	DWPA; SAC	Good	Good	Good	Good	2021 or earlier	Not at risk					<a href="#">View WB Page</a>	<a href="#">View WB on EPA Water Map</a>
26B	IE_SH_26_576	Fin Boyle	Lake	Roscommon County Council		Unassigned	Unassigned	Moderate	Good	2022-2027	Review			Lough Key	LAWPRO, Restoration	<a href="#">View WB Page</a>	<a href="#">View WB on EPA Water Map</a>
26B	IE_SH_26_580	Nanoge	Lake	Mayo County Council	SAC;	Unassigned	Good	Good	Good	2021 or earlier	Review			Lung	LAWPRO, Restoration	<a href="#">View WB Page</a>	<a href="#">View WB on EPA Water Map</a>
26B	IE_SH_26_584	Treanamarly	Lake	Roscommon County Council		Unassigned	Unassigned	Moderate	Good	2022-2027	Review			Carricknabraher	LAWPRO, Restoration	<a href="#">View WB Page</a>	<a href="#">View WB on EPA Water Map</a>
26B	IE_SH_26_590	Cloonacolly	Lake	Roscommon County Council		Unassigned	Moderate	Moderate	Good	2022-2027	Review			Lung	LAWPRO, Restoration	<a href="#">View WB Page</a>	<a href="#">View WB on EPA Water Map</a>
26B	IE_SH_26_630	Roe	Lake	Mayo County Council	SAC;	Unassigned	Good	Good	Good	2021 or earlier	Review			Lung	LAWPRO, Restoration	<a href="#">View WB Page</a>	<a href="#">View WB on EPA Water Map</a>
26B	IE_SH_26_661	Glinn	Lake	Roscommon County Council		Moderate	Moderate	Moderate	Good	2022-2027	At risk	Hydrological, Morphological	HYMO	Lung	LAWPRO, Restoration	<a href="#">View WB Page</a>	<a href="#">View WB on EPA Water Map</a>
26B	IE_SH_26_684	Clogher RN	Lake	Roscommon County Council	DWPA;	Unassigned	Unassigned	Moderate	Good	2022-2027	Review					<a href="#">View WB Page</a>	<a href="#">View WB on EPA Water Map</a>
26B	IE_SH_26_689	Urlaur	Lake	Mayo County Council	DWPA; SAC;	Bad	Bad	Moderate	Good	2022-2027	At risk	Morphological, UnknownImpactType	IS	Lung	LAWPRO, Restoration	<a href="#">View WB Page</a>	<a href="#">View WB on EPA Water Map</a>
26B	IE_SH_26_697	Cloonagh	Lake	Roscommon County Council	SAC;	Unassigned	Unassigned	Moderate	Good	2022-2027	Review			Lung	LAWPRO, Restoration	<a href="#">View WB Page</a>	<a href="#">View WB on EPA Water Map</a>
26B	IE_SH_26_702	Errit	Lake	Roscommon County Council	SAC;	Unassigned	Moderate	Good	Good	2021 or earlier	Not at risk			Lung	LAWPRO, Restoration	<a href="#">View WB Page</a>	<a href="#">View WB on EPA Water Map</a>
26B	IE_SH_26_705	Cavetown	Lake	Roscommon County Council	DWPA;	Moderate	Moderate	Moderate	Good	2022-2027	At risk	Morphological, Nutrients, UnknownImpactType	IS, Ag			<a href="#">View WB Page</a>	<a href="#">View WB on EPA Water Map</a>
26B	IE_SH_26_721	Oakport	Lake	Roscommon County Council		Unassigned	Moderate	Poor	Good	2022-2027	Review			Lough Key	LAWPRO, Restoration	<a href="#">View WB Page</a>	<a href="#">View WB on EPA Water Map</a>
26B	IE_SH_26_722	Eidin	Lake	Roscommon County Council		Unassigned	Moderate	Poor	Good	2022-2027	Review					<a href="#">View WB Page</a>	<a href="#">View WB on EPA Water Map</a>
26B	IE_SH_26_724	Key	Lake	Roscommon County Council		Moderate	Moderate	Moderate	Good	2022-2027	At risk	Morphological, UnknownImpactType	Unknown, IS	Lough Key	LAWPRO, Restoration	<a href="#">View WB Page</a>	<a href="#">View WB on EPA Water Map</a>
26B	IE_SH_26_728	Gara	Lake	Sligo County Council	DWPA; SPA;	Moderate	Moderate	Moderate	Good	2022-2027	At risk	Morphological, Chemical, UnknownImpactType	IS, Ag	Lough Gara	LAWPRO, Restoration	<a href="#">View WB Page</a>	<a href="#">View WB on EPA Water Map</a>
26B	IE_SH_26A030100	ANADERRYBOY_010	River	Roscommon County Council	SAC;	Good	Good	Good	Good	2021 or earlier	Not at risk			Lung	LAWPRO, Restoration	<a href="#">View WB Page</a>	<a href="#">View WB on EPA Water Map</a>
26B	IE_SH_26A030400	ANADERRYBOY_020	River	Mayo County Council	SAC;	Moderate	Moderate	Good	Good	2021 or earlier	Not at risk			Lung	LAWPRO, Restoration	<a href="#">View WB Page</a>	<a href="#">View WB on EPA Water Map</a>
26B	IE_SH_26B080100	BOYLE_010	River	Roscommon County Council	SAC; SPA;	Good	Moderate	Moderate	Good	2022-2027	At risk	Morphological, Nutrients, Organic	HYMO, Ag, For, DWTS	Lough Gara	LAWPRO, Restoration	<a href="#">View WB Page</a>	<a href="#">View WB on EPA Water Map</a>
26B	IE_SH_26B080200	BOYLE_020	River	Roscommon County Council		Good	Good	Moderate	Good	2022-2027	At risk	Sediment, Nutrients, Organic	Ag	Lough Key	LAWPRO, Restoration	<a href="#">View WB Page</a>	<a href="#">View WB on EPA Water Map</a>
26B	IE_SH_26B080400	BOYLE_030	River	Roscommon County Council		Good	Good	Good	Good	2021 or earlier	Not at risk			Lough Key	LAWPRO, Restoration	<a href="#">View WB Page</a>	<a href="#">View WB on EPA Water Map</a>
26B	IE_SH_26B080600	BOYLE_040	River	Roscommon County Council		Moderate	Moderate	Poor	Good	2022-2027	At risk	UnknownImpactType	Unknown	Lough Key	LAWPRO, Restoration	<a href="#">View WB Page</a>	<a href="#">View WB on EPA Water Map</a>
26B	IE_SH_26B090300	BREEDOGE_010	River	Roscommon County Council	SAC;	Poor	Poor	Good	Good	2021 or earlier	Not at risk			Carricknabraher	LAWPRO, Restoration	<a href="#">View WB Page</a>	<a href="#">View WB on EPA Water Map</a>

26B	IE_SH_26C020100	CARRICKNABRAHER_010	River	Roscommon County Council	SAC; SPA;	Good	Good	Good	Good	2021 or earlier	Not at risk			Carricknabraher	LAWPRO, Restoration	<a href="#">View WB Page</a>	<a href="#">View WB on EPA Water Map</a>
26B	IE_SH_26C020200	CARRICKNABRAHER_020	River	Roscommon County Council	SAC; SPA;	Poor	Poor	Poor	Good	2022-2027	At risk	Morphological, Organic	HYMO, Peat	Carricknabraher	LAWPRO, Restoration	<a href="#">View WB Page</a>	<a href="#">View WB on EPA Water Map</a>
26B	IE_SH_26C180500	CLOGHER (ROSCOMMON)_010	River	Roscommon County Council		Poor	Poor	Poor	Good	2022-2027	At risk	Hydrological, Morphological	HYMO			<a href="#">View WB Page</a>	<a href="#">View WB on EPA Water Map</a>
26B	IE_SH_26C180900	CLOGHER (ROSCOMMON)_020	River	Roscommon County Council		Moderate	Moderate	Poor	Good	2022-2027	At risk	Hydrological, Morphological	HYMO			<a href="#">View WB Page</a>	<a href="#">View WB on EPA Water Map</a>
26B	IE_SH_26C270690	Cummer (Mayo)_010	River	Mayo County Council	SAC;	Unassigned	Good	Good	Good	2021 or earlier	Review			Lung	LAWPRO, Restoration	<a href="#">View WB Page</a>	<a href="#">View WB on EPA Water Map</a>
26B	IE_SH_26D090760	DEMESNE_010	River	Roscommon County Council		Unassigned	Good	Moderate	Good	2022-2027	Review			Lough Key	LAWPRO, Restoration	<a href="#">View WB Page</a>	<a href="#">View WB on EPA Water Map</a>
26B	IE_SH_26D110290	DERRYMAQUIRK_010	River	Roscommon County Council	SPA;	Unassigned	Good	Moderate	Good	2022-2027	Review			Lough Gara	LAWPRO, Restoration	<a href="#">View WB Page</a>	<a href="#">View WB on EPA Water Map</a>
26B	IE_SH_26E290990	EIDIN_010	River	Roscommon County Council		Unassigned	Moderate	Moderate	Good	2022-2027	Review					<a href="#">View WB Page</a>	<a href="#">View WB on EPA Water Map</a>
26B	IE_SH_26F360990	FALLSOLLUS_010	River	Roscommon County Council	SAC;	Unassigned	Good	Good	Good	2021 or earlier	Review			Lung	LAWPRO, Restoration	<a href="#">View WB Page</a>	<a href="#">View WB on EPA Water Map</a>
26B	IE_SH_26G780950	GRANNY_010	River	Roscommon County Council		Unassigned	Good	Moderate	Good	2022-2027	Review			Carricknabraher	LAWPRO, Restoration	<a href="#">View WB Page</a>	<a href="#">View WB on EPA Water Map</a>
26B	IE_SH_26K060700	KILTACLARE STREAM_010	River	Mayo County Council		Good	Good	Good	Good	2021 or earlier	Not at risk			Lung	LAWPRO, Restoration	<a href="#">View WB Page</a>	<a href="#">View WB on EPA Water Map</a>
26B	IE_SH_26L030100	LUNG_010	River	Roscommon County Council		Good	Good	Good	Good	2021 or earlier	Not at risk			Lung	LAWPRO, Restoration	<a href="#">View WB Page</a>	<a href="#">View WB on EPA Water Map</a>
26B	IE_SH_26L030200	LUNG_020	River	Roscommon County Council		Good	Good	Good	Good	2021 or earlier	Not at risk			Lung	LAWPRO, Restoration	<a href="#">View WB Page</a>	<a href="#">View WB on EPA Water Map</a>
26B	IE_SH_26L030275	LUNG_030	River	Roscommon County Council		Unassigned	Good	Good	Good	2021 or earlier	Not at risk			Lung	LAWPRO, Restoration	<a href="#">View WB Page</a>	<a href="#">View WB on EPA Water Map</a>
26B	IE_SH_26L030350	LUNG_040	River	Roscommon County Council		High	Good	High	High	2021 or earlier	Review			Lung	LAWPRO, Restoration	<a href="#">View WB Page</a>	<a href="#">View WB on EPA Water Map</a>
26B	IE_SH_26L030400	LUNG_050	River	Roscommon County Council	SAC;	Good	Good	Moderate	Good	2022-2027	At risk	Nutrients	Ind	Lung	LAWPRO, Restoration	<a href="#">View WB Page</a>	<a href="#">View WB on EPA Water Map</a>
26B	IE_SH_26L100900	LISSYDALY STREAM_010	River	Mayo County Council		Good	Good	Good	Good	2021 or earlier	Not at risk			Lung	LAWPRO, Restoration	<a href="#">View WB Page</a>	<a href="#">View WB on EPA Water Map</a>
26B	IE_SH_26M010200	MANTUA_010	River	Roscommon County Council		Unassigned	Poor	Moderate	Good	2022-2027	Review			Carricknabraher	LAWPRO, Restoration	<a href="#">View WB Page</a>	<a href="#">View WB on EPA Water Map</a>
26B	IE_SH_26M910890	MOCMOYNE_010	River	Roscommon County Council		Unassigned	Good	Good	Good	2021 or earlier	Review			Lough Key	LAWPRO, Restoration	<a href="#">View WB Page</a>	<a href="#">View WB on EPA Water Map</a>
26B	IE_SH_26O040100	OWENNAFOREESHA_010	River	Roscommon County Council	SAC; SPA;	Moderate	Good	Moderate	Good	2022-2027	At risk	Morphological, Nutrients, Organic	Ag, HYMO, DWTS, UR	Carricknabraher	LAWPRO, Restoration	<a href="#">View WB Page</a>	<a href="#">View WB on EPA Water Map</a>
26B	IE_SH_26W010200	BOYLE_050	River	Roscommon County Council		Unassigned	Good	Good	Good	2021 or earlier	Review					<a href="#">View WB Page</a>	<a href="#">View WB on EPA Water Map</a>