

Cycle 3

HA 25C Lower Shannon (Lough Derg) Catchment Report,
May 2024



Introduction

Water Quality Summary

High Status Objectives

Water Quality Changes

WFD Risk

Significant Pressures

Action

Summary Information

Introduction

This report provides an overview of the water quality in the Lower Shannon (Lough Derg) Catchment and the pressures impacting on water quality. This report is based on data up to 2021. The latest water quality data, dashboards and maps throughout this report are available on catchments.ie and [EPA Water Map](https://epa.ie/water-map).

The Lower Shannon (Lough Derg) Catchment covers an area of 1,820km² and comprises Lough Derg and its catchment. The catchment is characterised by flat limestone plains, a small proportion of which are karstified to the east of Lough Derg, and the uplands of the Devil's Bit Hills in the southeast, the Slieve Aughty Mountains in the west and the Slieve Bearnagh and Arra Mountains in the south, between which the Shannon escapes to the south from Lough Derg. All of these upland areas are underlain by old red sandstone with metamorphic and volcanic rocks in the higher summit areas. This catchment can be divided into two regions, the area draining into the western and eastern sides of Lough Derg.

The Lower Shannon (Lough Derg) Catchment is divided into 12 subcatchments and has 84 surface water bodies and 19 groundwater bodies.

[View the Lower Shannon \(Lough Derg\) Catchment on the EPA Water Map](https://catchments.ie/catchment/25C-Lower-Shannon)

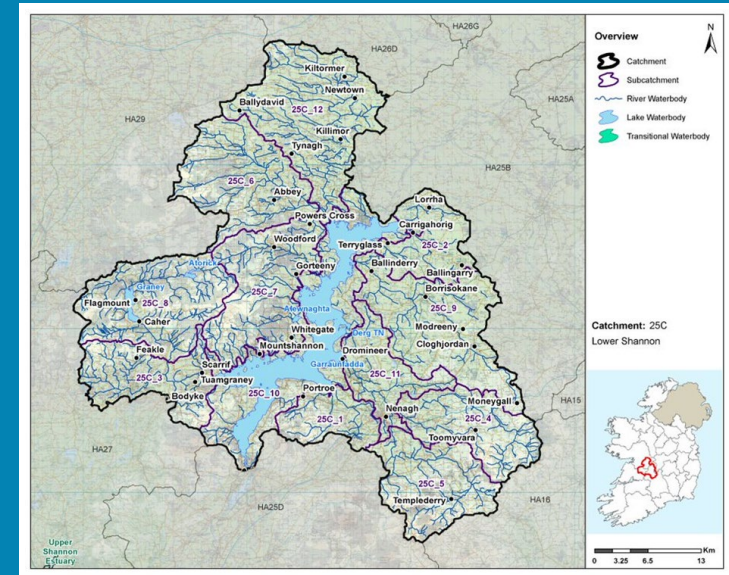
Previous Catchment Assessments

Previous catchment assessments, which provide additional historic context and information, are archived on catchments.ie:

- [Cycle 2 Catchment Assessments – published September 2018](#)
- [Cycle 3 Draft Catchment Assessments – published September 2021](#)

Online Dashboards

Links to online dashboards are provided in this report – these numbers may vary from those in this document as time progress and the online dashboards are updated based on the latest data and scientific assessments.



Overview of Subcatchments in the Lower Shannon (Lough Derg) Catchment

Water Quality Summary

Introduction

Water Quality Summary

High Status Objectives

Water Quality Changes

WFD Risk

Significant Pressures

Action

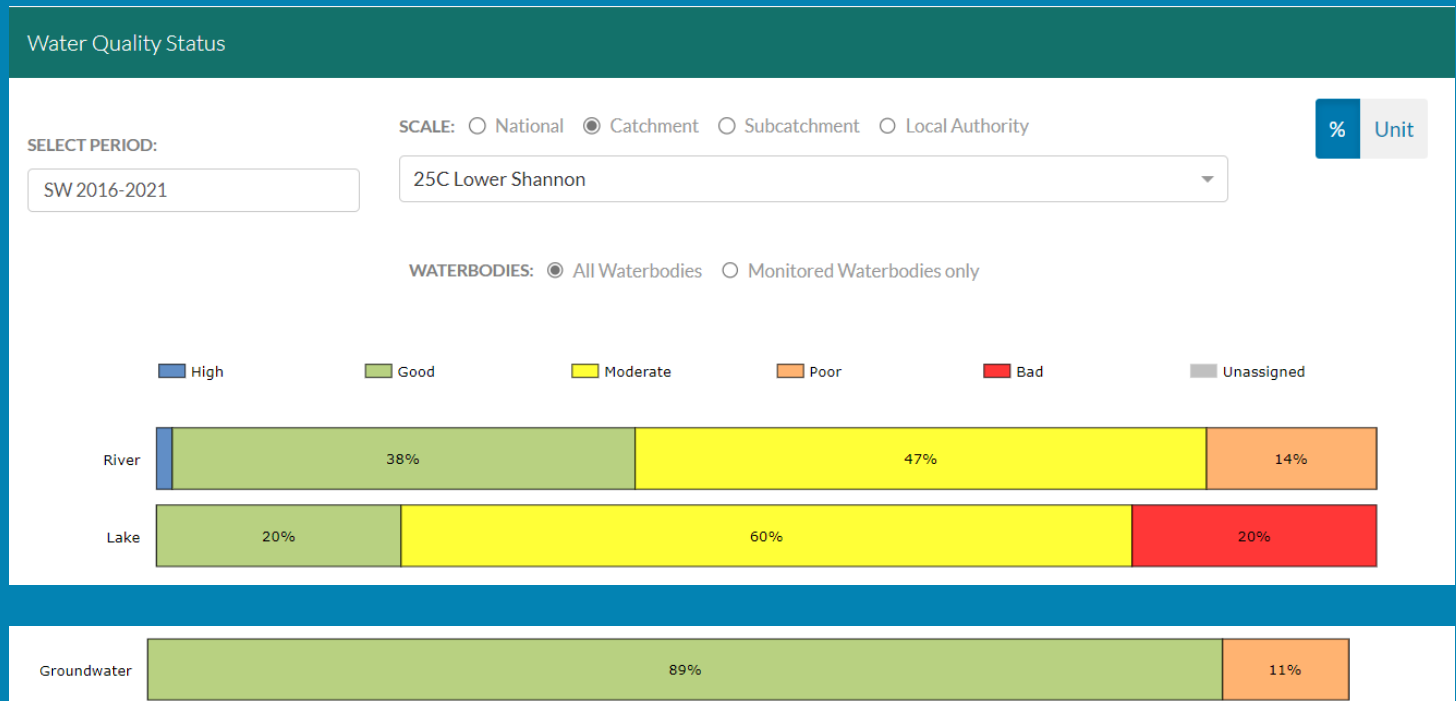
Summary Information

The dashboard below provides a breakdown of water quality status for surface and groundwater bodies in the Lower Shannon (Lough Derg) Catchment.

A total of 38% of surface waterbodies were at Good or High Ecological Status in the 2016-2021 monitoring period. Eighty-nine percent of groundwater bodies were at Good status.

Go to EPA Water Maps for WFD Status

[EPA Water Map](#)



Water quality status 2016-2021 for the Lower Shannon (Lough Derg) Catchment.
View Online Dashboard: <https://www.catchments.ie/data/#/dashboard/waterquality>

High Status Objective Waterbodies

Introduction

High status waters are prioritised for protection and action.

Water Quality Summary

There are ten waterbodies with a **High Ecological Status Objective** (HSO) in the Lower Shannon (Lough Derg) Catchment, with nine currently not meeting their environmental objective of High.

High Status Objectives

Grants for septic tank upgrades may be available in high status objective catchment areas - you can learn more and check your Eircode for eligibility here: <https://www.gov.ie/en/publication/6cc1e-domestic-waste-water-treatment-systems-septic-tanks>

[View HSO river waterbodies in this catchment.](#)

See *Status and Risk / High Status Objective* for other waterbody types.

Water Quality Changes

WFD Risk

Significant Pressures

Action

Summary Information

Water Quality Status - High Status Objective Waterbodies

SELECT TYPE:

All Surface Waters

SCALE: Catchment Local Authority

25C Lower Shannon

	SW 2007-2009	SW 2010-2012	SW 2010-2015	SW 2013-2018	SW 2016-2021
AYLE_010 (River)	High	High	High	High	High
BALLINLOUGH STREAM_010 (River)	High	High	Good	Good	Good
BALLINLOUGH STREAM_020 (River)	High	High	Good	Good	Good
BLEACH_020 (River)	High	High	Moderate	Good	Good
CAPPAGH (GALWAY)_010 (River)	High	Good	High	Good	Good
CLOGHAUN_010 (River)	Good	High	High	Good	Good
CORRA_020 (River)	High	High	High	High	Good
DRUMKEARY STREAM_020 (River)	High	High	Good	Good	Good
GRANEY (SHANNON)_030 (River)	High	High	High	Good	Good
OLLATRIM_030 (River)	High	High	High	Good	Moderate

Water quality status for High Ecological Status Objective waterbodies.

View Online Dashboard: <https://www.catchments.ie/data/#/dashboard/waterquality>

Water Quality Changes

Below illustrates the changes in ecological status in monitored surface waterbodies over the last five monitoring cycles in the Lower Shannon (Lough Derg) Catchment. Nationally while there have been improvements in some waterbodies, these have been offset by declines elsewhere.



Ecological status trends for monitored surface waterbodies over the last five monitoring cycles in the Lower Shannon (Lough Derg) Catchment. **View online dashboard:** <https://www.catchments.ie/data/#/dashboard/waterquality>

A total of 41 (40%) waterbodies are currently meeting their environmental objective of Good or High Ecological Status.

	Total	Achieving Environmental Objectives (2016-2021)	High Status Environmental Objectives Waterbodies	Achieving High Status Environmental Objectives (2016-2021)
Rivers	79	23 (29%)	10	1 (10%)
Canals	-	-	-	-
Lakes	5	1 (20%)	-	-
Transitional	-	-	-	-
Coastal	-	-	-	-
Groundwater	19	17 (89%)	-	-

Introduction

Water Quality Summary

High Status Objectives

Water Quality Changes

WFD Risk

Significant Pressures

Action

Summary Information

WFD Risk

Introduction

Water Quality Summary

High Status Objectives

Water Quality Changes

WFD Risk

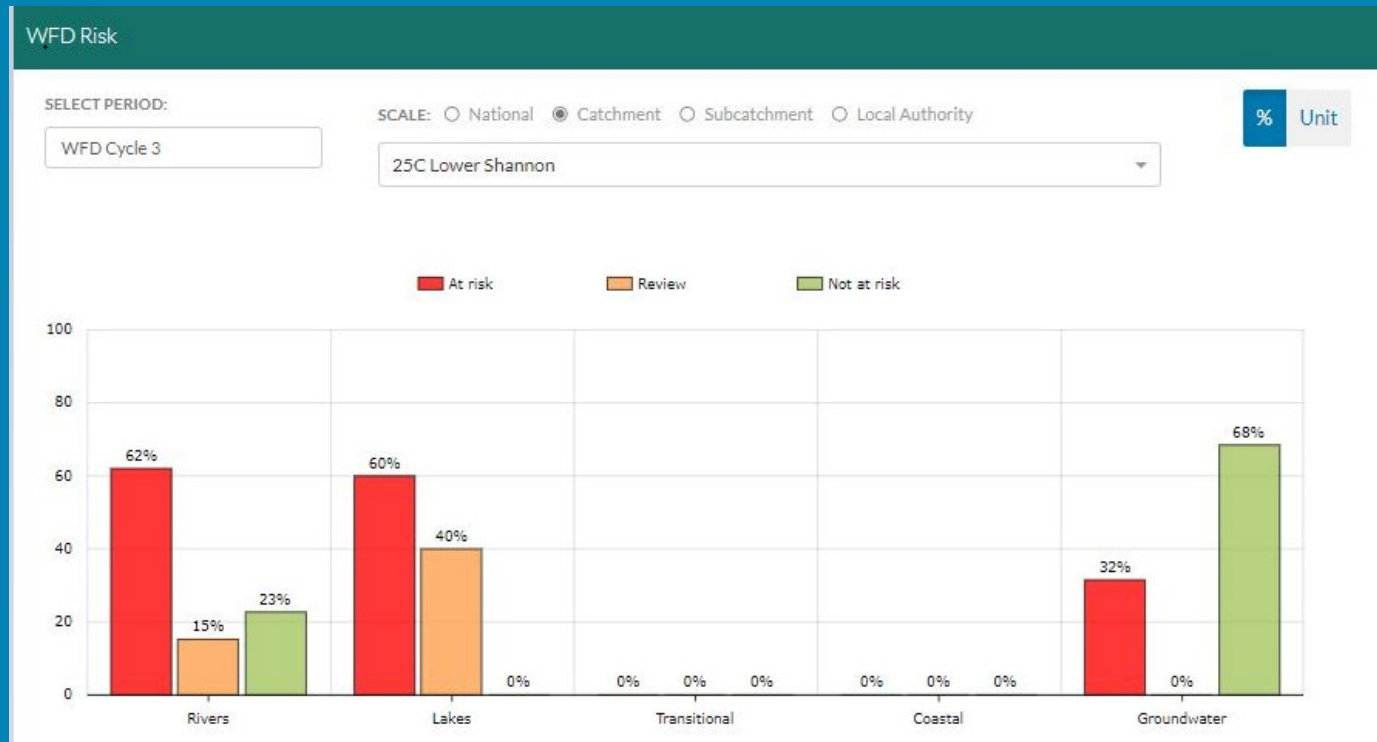
Significant Pressures

Action

Summary Information

A total of 58 (56%) waterbodies are *At Risk* of not meeting their environmental objective in the Lower Shannon (Lough Derg) Catchment, while 14 (14%) are under *Review* and 31 (30%) are *Not At Risk*.

Go to [EPA Water Map](#) to see *WFD Risk for this catchment*



WFD Risk for the Lower Shannon (Lough Derg) Catchment based on 2016-2021 data.
View Online Dashboard: <https://www.catchments.ie/data/#/dashboard/waterquality>

There are currently no heavily modified water bodies (HMWBs) in the Lower Shannon (Lough Derg) Catchment.

There are no artificial waterbodies in the Lower Shannon (Lough Derg) Catchment.

The [EPA's characterisation outcome report](#) has more information on WFD Risk

Click [here](#) for more information on significant pressures

Introduction

Water Quality Summary

High Status Objectives

Water Quality Changes

WFD Risk

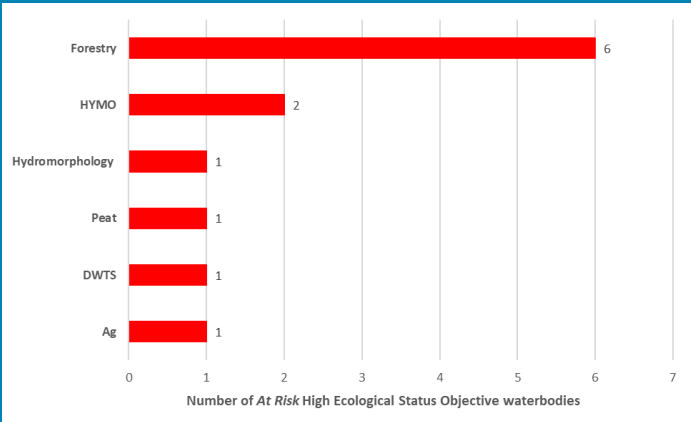
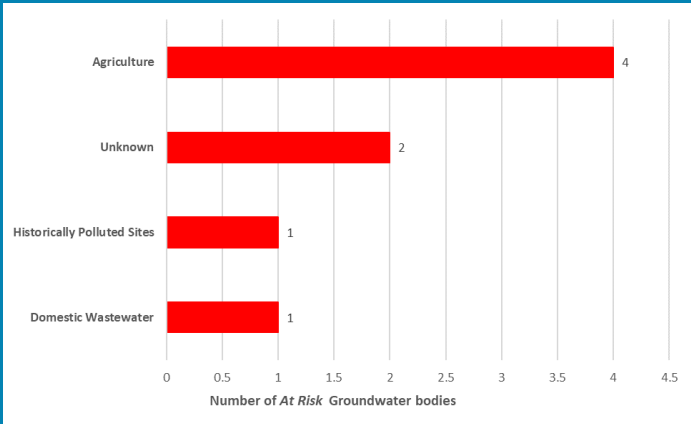
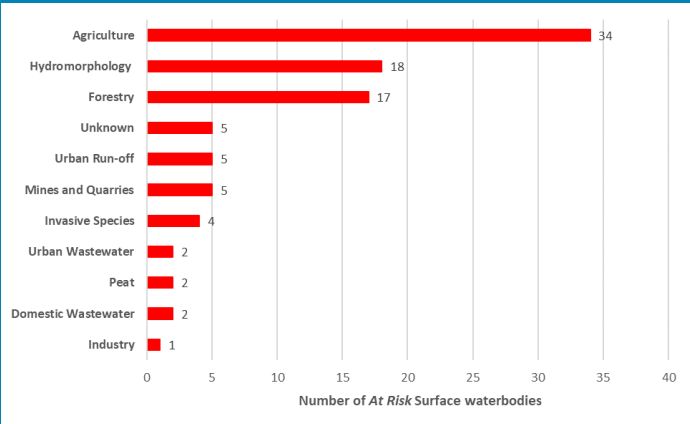
Significant Pressures

Action

Summary Information

Significant Pressures driving risk

Significant pressure types impacting the 52 *At Risk* surface waterbodies and six groundwater bodies are broken down in the figures below, including significant pressure information for the nine *At Risk* High Ecological Status Objective waterbodies.



The issues driven by these pressures are mainly nutrient pollution, altered morphological condition (habitat) and sediment impacts for surface water and nutrient pollution, chemical quality diminution for surface water and chemical pollution for groundwaters. For more information, see <https://www.catchments.ie/data/#/dashboard/pressure?k=i351zs>.

Go to the Summary Information section to get significant pressure and issue data for At Risk waterbodies within the Lower Shannon (Lough Derg) Catchment.

Introduction

Water Quality
Summary

High Status
Objectives

Water Quality
Changes

WFD Risk

Significant
Pressures

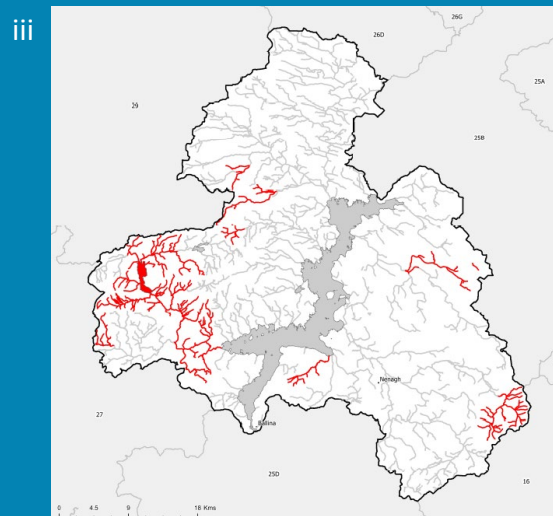
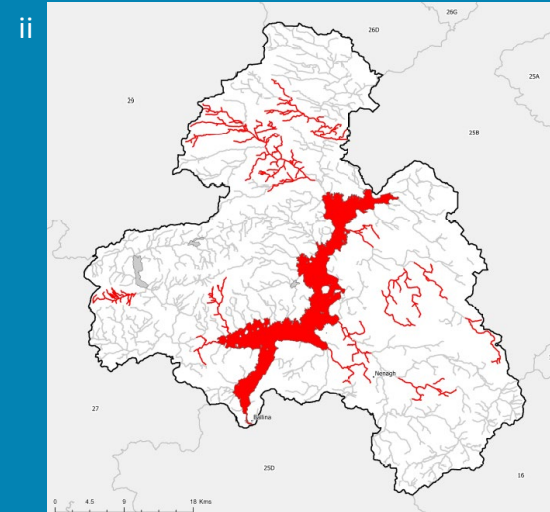
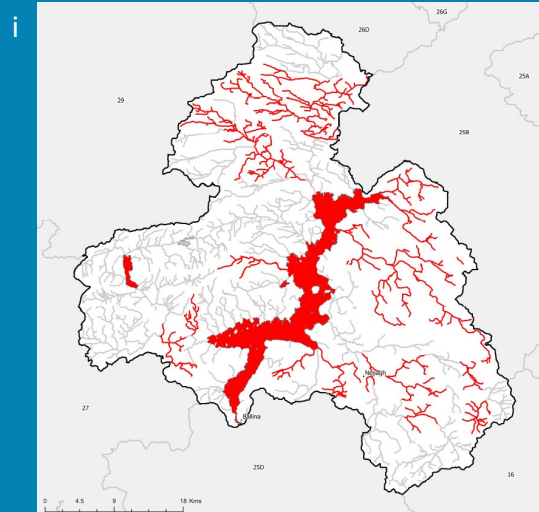
Action

Summary
Information

Significant Pressures

Agriculture is the top significant pressure impacting 66% of the 58 *At Risk* waterbodies within the Lower Shannon (Lough Derg) Catchment, followed by 31% impacted by Hydromorphological Pressures and 29% by Forestry.

River Waterbody
Significant Pressure in Waterbody *At Risk*
Other Waterbodies
Lake, Coastal and Transitional Waterbody
Significant Pressure in Waterbody *At Risk*
Other Waterbodies



The catchments.ie dashboards will show all significant pressures identified for this catchment.

www.catchments.ie/data/#/dashboard/pressure

Go to the [EPA Water Maps](#) for the locations of all significant pressure types identified for this catchment

Locations of At Risk surface waterbodies impacted by i) Agriculture, ii) Hydromorphological Pressures and iii) Forestry.

Introduction

Water Quality
Summary

High Status
Objectives

Water Quality
Changes

WFD Risk

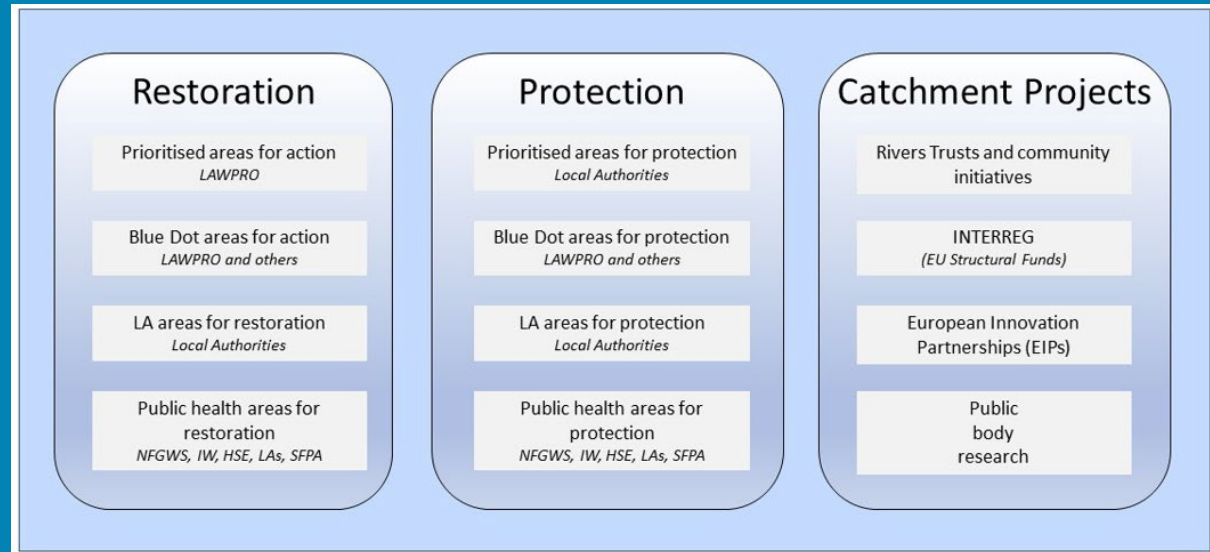
Significant
Pressures

Action

Summary
Information

Priority Areas for Action

A number of waterbodies have been prioritised through the selection of Areas for Action. There were six Priority Areas for Action identified for the second river basin management planning cycle in the Lower Shannon (Lough Derg) Catchment. This has increased to a total of 13 Areas for Restoration, two Areas for Protection and two Catchment Projects for the third cycle. ***Go to the summary information section to get Area for Action information for waterbodies within the Lower Shannon (Lough Derg) Catchment.***



Types of Areas for Action under the third cycle River Basin Management Plan

- View the current progress of Areas for Action and Summary Reports completed by LAWPRO, on catchments.ie and the EPA Water Map:
 - <https://www.catchments.ie/data/#/areaforaction>
 - https://gis.epa.ie/EPAMaps/default?easting=?&northing=?&lid=EPA:WFD_AreasForAction
- LAWPRO have also published detailed desktop studies on Prioritised Areas for Action (PAAs) which are available their website: <https://lawaters.ie/desktop-studies/>
- Information on Areas for Action for the second cycle is available in Cycle 2 Catchment Assessments which have been archived on catchments.ie: <https://www.catchments.ie/download/cycle-2-catchment-assessments-published-september-2018/>

Introduction

Water Quality
Summary

High Status
Objectives

Water Quality
Changes

WFD Risk

Significant
Pressures

Action

Summary
Information

Summary information for all waterbodies in the Lower Shannon (Lough Derg) Catchment

The next page provides a table with a breakdown of key information for all waterbodies in this catchment. The key is provided below. Additional information for each waterbody is available on <https://www.catchments.ie/data>, including a breakdown of status, a monitoring schedule for monitored waterbodies and downloadable chemistry results, where available.

Protected Area categories	BW: Bathing Water DW: Drinking Water Fish: Salmonid Waters NSA: Nutrient Sensitive Areas SAC: Special Area of Conservation, Natura 2000 (water dependent habitats and species) SF: Shellfish Area SPA: Special Area of Protection, Natura 2000 (water dependent habitat and species)
Significant pressure* types categories <i>* For At Risk waterbodies only</i>	Ab: Abstractions Ag: Agriculture Aq: Aquaculture At: Atmospheric DWW: Domestic Wastewater For: Forestry HPS: Historically polluted sites HYMO: Hydromorphology Ind: Industry IS: Invasive Species M+Q: Mines and Quarries Peat: Peat Drainage and Extraction UR: Urban Run-Off UWW: Urban Wastewater Was: Waste WT: Water Treatment

Catchment Code	Waterbody (WB) Code	WB Name	WB Type	Local Authority	Protected Area	Status 10-15	Status 13-18	Status 16-21	Environmental Objective	Environmental Objective Date	WFD Risk 16-21	Significant Issue(s)	Significant Pressure(s)	Area for Action (AFA)	AFA (lead, type)	Link to WB page on catchments.ie	Link to WB on EPA Water Map
15, 16, 24, 25B, 25C, 25D	IE_SE_G_131	Templemore	Groundwater	Tipperary County Council	DWPA; SAC	Good	Good	Good	Good	2021 or earlier	At risk	Nutrients	Unknown, Ag			View WB Page	View WB on EPA Water Map
25B, 25C, 26D, 26G, 29	IE_SH_G_019	Aughrim	Groundwater	Galway County Council	DWPA; SAC	Good	Good	Good	Good	2021 or earlier	Not at risk					View WB Page	View WB on EPA Water Map
25B, 25C	IE_SH_G_021	Ballinderry	Groundwater	Tipperary County Council	DWPA	Good	Good	Good	Good	2021 or earlier	Not at risk					View WB Page	View WB on EPA Water Map
25A, 25B, 25C	IE_SH_G_040	Banagher	Groundwater	Tipperary County Council	DWPA; SAC	Good	Good	Good	Good	2021 or earlier	Not at risk					View WB Page	View WB on EPA Water Map
25A, 25B, 25C	IE_SH_G_041	Birr	Groundwater	Tipperary County Council	DWPA; SAC	Good	Good	Good	Good	2021 or earlier	Not at risk					View WB Page	View WB on EPA Water Map
25B, 25C	IE_SH_G_042	Borrisokane	Groundwater	Tipperary County Council	DWPA; SAC	Good	Good	Good	Good	2021 or earlier	Not at risk					View WB Page	View WB on EPA Water Map
25C, 27, 29	IE_SH_G_071	Crusheen	Groundwater	Clare County Council	DWPA; SAC	Good	Good	Good	Good	2021 or earlier	Not at risk					View WB Page	View WB on EPA Water Map
25B, 25C	IE_SH_G_147	Lismaline	Groundwater	Tipperary County Council	DWPA; SAC	Good	Good	Good	Good	2021 or earlier	Not at risk					View WB Page	View WB on EPA Water Map
25C, 25D, 27, 29	IE_SH_G_157	Lough Graney	Groundwater	Clare County Council	DWPA; SAC	Good	Good	Good	Good	2021 or earlier	Not at risk					View WB Page	View WB on EPA Water Map
16, 25B, 25C, 25D	IE_SH_G_178	Nenagh	Groundwater	Tipperary County Council	DWPA; SAC	Good	Good	Good	Good	2021 or earlier	Not at risk					View WB Page	View WB on EPA Water Map
15, 16, 25A, 25B, 25C	IE_SH_G_205	Shinrone	Groundwater	Offaly County Council	DWPA; SAC	Good	Good	Good	Good	2021 or earlier	Not at risk					View WB Page	View WB on EPA Water Map
16, 24, 25C, 25D	IE_SH_G_213	Slieve Phelim	Groundwater	Limerick City & County Council	DWPA; SAC	Good	Good	Good	Good	2021 or earlier	Not at risk					View WB Page	View WB on EPA Water Map
25C, 25D, 27	IE_SH_G_229	Tulla-Newmarket on Fergus	Groundwater	Clare County Council	DWPA; SAC	Good	Good	Good	Good	2021 or earlier	Not at risk					View WB Page	View WB on EPA Water Map
25B, 25C, 26D, 26G, 29	IE_SH_G_236	Tynagh	Groundwater	Galway County Council	DWPA; SAC	Good	Good	Good	Good	2021 or earlier	Not at risk					View WB Page	View WB on EPA Water Map
25C	IE_SH_G_237	Historic Mine (Tynagh)	Groundwater	Galway County Council	DWPA	Poor	Poor	Poor	Good	2022-2027	At risk	Chemical, ChemicalQualityDiminution ForSW	HPS			View WB Page	View WB on EPA Water Map
25B, 25C	IE_SH_G_251	CloughJordan-Moneygall Gravels	Groundwater	Offaly County Council	DWPA	Good	Good	Good	Good	2021 or earlier	At risk	Nutrients	Ag			View WB Page	View WB on EPA Water Map
25C, 27, 29	IE_WE_G_0091	GWDTE-Caherglassaun Turlough (SAC000238)	Groundwater	Galway County Council	DWPA; SAC (GWDTE)	Poor	Poor	Poor	Good	2022-2027	At risk	GWChemicalDependentTerrestrialEcosystemDamage, Nutrients	Unknown			View WB Page	View WB on EPA Water Map
25C, 29	IE_WE_G_0093	GWDTE-Coy Turlough (SAC002117)	Groundwater	Galway County Council	DWPA; SAC (GWDTE)	Good	Good	Good	Good	2021 or earlier	At risk	ChemicalQualityDiminution ForSW, Nutrients	Ag			View WB Page	View WB on EPA Water Map
25C, 26D, 29, 30	IE_WE_G_0100	GWDTE-Rahasane Turlough (SAC000322)	Groundwater	Galway County Council	DWPA; SAC (GWDTE)	Good	Good	Good	Good	2021 or earlier	At risk	ChemicalQualityDiminution ForSW, Nutrients	DWTS, Ag			View WB Page	View WB on EPA Water Map
25C	IE_SH_25_172	Atorick	Lake	Clare County Council		Unassigned	Good	Moderate	Good	2022-2027	Review			Bleach and Lough Graney	LAWPRO, Restoration	View WB Page	View WB on EPA Water Map
25C	IE_SH_25_189	Alewnaghta	Lake	Clare County Council	SPA;	Bad	Bad	Bad	Good	2022-2027	At risk	Nutrients, UnknownImpactType	Ag, IS	Woodford	LAWPRO, Restoration	View WB Page	View WB on EPA Water Map
25C	IE_SH_25_190	Graney	Lake	Clare County Council		Moderate	Moderate	Moderate	Good	2022-2027	At risk	Nutrients, UnknownImpactType	IS, For, Ag	Bleach and Lough Graney	LAWPRO, Restoration	View WB Page	View WB on EPA Water Map
25C, 25D	IE_SH_25_191a	Derg TN	Lake	Tipperary County Council	BW; DWPA; SAC; SPA; NSA;	Poor	Moderate	Moderate	Good	2022-2027	At risk	Hydrological, Morphological, Nutrients, UnknownImpactType	HYMO, IS, Ag	L Derg Group Water Protection	NFGWS, Restoration	View WB Page	View WB on EPA Water Map
25C	IE_SH_25_9	Garraunfadda	Lake	Tipperary County Council		Unassigned	Unassigned	Good	Good	2021 or earlier	Review					View WB Page	View WB on EPA Water Map
25C	IE_SH_25A040100	ARDGREGANE STREAM_010	River	Tipperary County Council		Moderate	Poor	Poor	Good	2022-2027	At risk	Sediment, Nutrients	Ag	Lisheenacountha Plunket St GWS	NFGWS, Restoration	View WB Page	View WB on EPA Water Map
25C	IE_SH_25A040400	ARDGREGANE STREAM_020	River	Tipperary County Council	SPA;	Moderate	Moderate	Moderate	Good	2022-2027	At risk	Morphological, Nutrients, Organic	HYMO, UR, Ag	Gurteenakilla GWS	NFGWS, Restoration	View WB Page	View WB on EPA Water Map
25C	IE_SH_25A050100	SHANNON (LOWER)_040	River	Tipperary County Council	SAC; SPA; NSA;	Unassigned	Unassigned	Good	Good	2021 or earlier	Review			Drombane GWS	NFGWS, Protection	View WB Page	View WB on EPA Water Map
25C	IE_SH_25A060500	ARDCRONY STREAM_010	River	Tipperary County Council		Moderate	Moderate	Moderate	Good	2022-2027	At risk	Morphological, Nutrients	HYMO, Ag, M+Q	Ballyfinboy	LAWPRO, Restoration	View WB Page	View WB on EPA Water Map
25C	IE_SH_25A070400	AYLE_010	River	Clare County Council	SAC;	High	High	High	High	2021 or earlier	Not at risk			Graney River	LAWPRO, Restoration	View WB Page	View WB on EPA Water Map
25C	IE_SH_25B010100	BALLINTOTTY_010	River	Tipperary County Council		Good	Good	Good	Good	2021 or earlier	Not at risk			Ollatrim	LAWPRO, Restoration	View WB Page	View WB on EPA Water Map
25C	IE_SH_25B010300	BALLINTOTTY_020	River	Tipperary County Council		Good	Moderate	Moderate	Good	2022-2027	At risk	Sediment, Nutrients, Organic	Ag, HYMO	Ollatrim	LAWPRO, Restoration	View WB Page	View WB on EPA Water Map
25C	IE_SH_25B020070	BALLYFINBOY_010	River	Offaly County Council		Moderate	Moderate	Moderate	Good	2022-2027	At risk	Hydrological, Morphological, Nutrients	HYMO, Ag, M+Q	Ballyfinboy	LAWPRO, Restoration	View WB Page	View WB on EPA Water Map
25C	IE_SH_25B020100	BALLYFINBOY_020	River	Offaly County Council		Moderate	Poor	Moderate	Good	2022-2027	At risk	Sediment, Morphological, Nutrients	Ag, HYMO	Ballyfinboy	LAWPRO, Restoration	View WB Page	View WB on EPA Water Map
25C	IE_SH_25B020300	BALLYFINBOY_030	River	Tipperary County Council		Good	Moderate	Moderate	Good	2022-2027	At risk	Nutrients, Organic	Ag, DWTS, UR, UWW	Ballyfinboy	LAWPRO, Restoration	View WB Page	View WB on EPA Water Map

25C	IE_SH_25B020550	BALLYFINBOY_040	River	Tipperary County Council		Moderate	Moderate	Moderate	Good	2022-2027	At risk	Morphological, Nutrients, Organic	Ag, HYMO, UR	Ballyfinboy	LAWPRO, Restoration	View WB Page	View WB on EPA Water Map
25C	IE_SH_25B020600	BALLYFINBOY_050	River	Tipperary County Council	SAC;	Moderate	Moderate	Moderate	Good	2022-2027	At risk	Morphological, Nutrients, Organic	Ag, For, UWW	Ballyfinboy	LAWPRO, Restoration	View WB Page	View WB on EPA Water Map
25C	IE_SH_25B020700	BALLYFINBOY_060	River	Tipperary County Council		Moderate	Moderate	Moderate	Good	2022-2027	At risk	Nutrients	Ag, M+Q	Ballyfinboy	LAWPRO, Restoration	View WB Page	View WB on EPA Water Map
25C	IE_SH_25B020800	BALLYFINBOY_070	River	Tipperary County Council	SAC; SPA;	Moderate	Poor	Moderate	Good	2022-2027	At risk	Morphological, Nutrients	Ag, HYMO	Ballyfinboy	LAWPRO, Restoration	View WB Page	View WB on EPA Water Map
25C	IE_SH_25B070100	BLEACH_010	River	Galway County Council	SAC;	Poor	Good	Good	Good	2021 or earlier	Not at risk			Bleach and Lough Graney	LAWPRO, Restoration	View WB Page	View WB on EPA Water Map
25C	IE_SH_25B070200	BLEACH_020	River	Clare County Council		Moderate	Good	Good	High	2022-2027	At risk	Sediment	For	Bleach and Lough Graney	LAWPRO, Restoration	View WB Page	View WB on EPA Water Map
25C	IE_SH_25B100200	BOW_010	River	Clare County Council	SPA; NSA;	Moderate	Moderate	Moderate	Good	2022-2027	At risk	Morphological	HYMO	Bow_Blue Dot	LAWPRO, Restoration	View WB Page	View WB on EPA Water Map
25C	IE_SH_25B150300	BALLINLOUGH STREAM_010	River	Galway County Council		Good	Good	Good	High	2022-2027	At risk	Morphological, Nutrients	For, Peat	Cappagh (Galway)	LAWPRO, Restoration	View WB Page	View WB on EPA Water Map
25C	IE_SH_25B150500	BALLINLOUGH STREAM_020	River	Galway County Council		Good	Good	Good	High	2022-2027	At risk	Hydrological, Morphological	HYMO	Cappagh (Galway)	LAWPRO, Restoration	View WB Page	View WB on EPA Water Map
25C	IE_SH_25C030100	CAPPAGH (GALWAY)_010	River	Galway County Council		High	Good	Good	High	2022-2027	At risk	Morphological	HYMO	Cappagh (Galway)	LAWPRO, Restoration	View WB Page	View WB on EPA Water Map
25C	IE_SH_25C030500	CAPPAGH (GALWAY)_020	River	Galway County Council		Moderate	Moderate	Moderate	Good	2022-2027	At risk	Morphological, Nutrients	Ag, HYMO	Cappagh (Galway)	LAWPRO, Restoration	View WB Page	View WB on EPA Water Map
25C	IE_SH_25C070200	CLOGHAUN_010	River	Clare County Council	SAC;	High	Good	Good	High	2022-2027	At risk	Sediment, Nutrients, Organic	For, DWTS	Graney River	LAWPRO, Restoration	View WB Page	View WB on EPA Water Map
25C	IE_SH_25C070400	CLOGHAUN_020	River	Clare County Council		Good	Good	Good	Good	2021 or earlier	Not at risk			Graney River	LAWPRO, Restoration	View WB Page	View WB on EPA Water Map
25C	IE_SH_25C070600	CLOGHAUN_030	River	Clare County Council		Good	Good	Good	Good	2021 or earlier	Not at risk			Graney River	LAWPRO, Restoration	View WB Page	View WB on EPA Water Map
25C	IE_SH_25C080200	COOS_010	River	Galway County Council	SAC; SPA;	Poor	Poor	Poor	Good	2022-2027	At risk	Nutrients	Ag	Woodford	LAWPRO, Restoration	View WB Page	View WB on EPA Water Map
25C	IE_SH_25C090100	CORRA_010	River	Clare County Council	SAC;	Good	Good	Good	Good	2021 or earlier	Not at risk			Graney River	LAWPRO, Restoration	View WB Page	View WB on EPA Water Map
25C	IE_SH_25C090400	CORRA_020	River	Clare County Council		High	High	Good	High	2022-2027	At risk	UnknownImpactType	For	Graney River	LAWPRO, Restoration	View WB Page	View WB on EPA Water Map
25C	IE_SH_25C160500	CARRIGAHORIG STREAM_010	River	Tipperary County Council	SAC; SPA;	Poor	Poor	Poor	Good	2022-2027	At risk	Nutrients	Ag			View WB Page	View WB on EPA Water Map
25C	IE_SH_25C970950	CLONMAKILLADUFF_010	River	Tipperary County Council	SAC; SPA;	Unassigned	Moderate	Moderate	Good	2022-2027	Review			Lower Nenagh and Clareen	LAWPRO, Restoration	View WB Page	View WB on EPA Water Map
25C	IE_SH_25D060500	DRUMANDOORA_010	River	Clare County Council		Good	Good	Good	Good	2021 or earlier	Not at risk			Bleach and Lough Graney	LAWPRO, Restoration	View WB Page	View WB on EPA Water Map
25C	IE_SH_25D070100	DUNIRY_010	River	Galway County Council		Good	Good	Good	Good	2021 or earlier	Not at risk			Cappagh (Galway)	LAWPRO, Restoration	View WB Page	View WB on EPA Water Map
25C	IE_SH_25D070400	DUNIRY_020	River	Galway County Council		Good	Good	Good	Good	2021 or earlier	Not at risk			Cappagh (Galway)	LAWPRO, Restoration	View WB Page	View WB on EPA Water Map
25C	IE_SH_25D080400	DOLLA_010	River	Tipperary County Council		Good	Good	Good	Good	2021 or earlier	Not at risk			Upper Nenagh	Tipperary County Council, Protection	View WB Page	View WB on EPA Water Map
25C	IE_SH_25D100200	DERRAINY_010	River	Clare County Council	SPA; NSA;	Good	Good	Good	Good	2021 or earlier	Not at risk			Woodford	LAWPRO, Restoration	View WB Page	View WB on EPA Water Map
25C	IE_SH_25D110300	DRUMKEARY STREAM_010	River	Galway County Council		Moderate	Good	Good	Good	2021 or earlier	Review			Cappagh (Galway)	LAWPRO, Restoration	View WB Page	View WB on EPA Water Map
25C	IE_SH_25D110350	DRUMKEARY STREAM_020	River	Galway County Council		Good	Good	Good	High	2022-2027	At risk	Morphological, Nutrients	For	Cappagh (Galway)	LAWPRO, Restoration	View WB Page	View WB on EPA Water Map
25C	IE_SH_25G040025	GRANEY (SHANNON)_010	River	Clare County Council	SAC;	Good	Good	Moderate	Good	2022-2027	At risk	Hydrological, Morphological, Nutrients	HYMO, For	Bleach and Lough Graney	LAWPRO, Restoration	View WB Page	View WB on EPA Water Map
25C	IE_SH_25G040100	GRANEY (SHANNON)_020	River	Clare County Council		Good	Good	Moderate	Good	2022-2027	At risk	Nutrients	For	Bleach and Lough Graney	LAWPRO, Restoration	View WB Page	View WB on EPA Water Map
25C	IE_SH_25G040200	GRANEY (SHANNON)_030	River	Clare County Council		High	Good	Good	High	2022-2027	At risk	Sediment	For	Graney River	LAWPRO, Restoration	View WB Page	View WB on EPA Water Map
25C	IE_SH_25G040300	GRANEY (SHANNON)_040	River	Clare County Council		Moderate	Poor	Moderate	Good	2022-2027	At risk	Morphological, Nutrients	For, Ag	Graney River	LAWPRO, Restoration	View WB Page	View WB on EPA Water Map
25C	IE_SH_25G040400	GRANEY (SHANNON)_050	River	Clare County Council	SPA; NSA;	Poor	Moderate	Poor	Good	2022-2027	At risk	Sediment, Morphological, Nutrients	For, HYMO, UR	Graney River	LAWPRO, Restoration	View WB Page	View WB on EPA Water Map
25C	IE_SH_25G200100	GORTADALAUN STREAM_010	River	Tipperary County Council		Unassigned	Moderate	Poor	Good	2022-2027	Review			Lower Nenagh and Clareen	LAWPRO, Restoration	View WB Page	View WB on EPA Water Map
25C	IE_SH_25K010020	KILCROW_010	River	Galway County Council		Good	Good	Good	Good	2021 or earlier	Not at risk			Kilcrow	LAWPRO, Restoration	View WB Page	View WB on EPA Water Map
25C	IE_SH_25K010060	KILCROW_020	River	Galway County Council		Good	Good	Good	Good	2021 or earlier	Not at risk			Kilcrow	LAWPRO, Restoration	View WB Page	View WB on EPA Water Map
25C	IE_SH_25K010100	KILCROW_030	River	Galway County Council		Good	Moderate	Moderate	Good	2022-2027	At risk	Nutrients	Ag	Kilcrow	LAWPRO, Restoration	View WB Page	View WB on EPA Water Map
25C	IE_SH_25K010300	KILCROW_040	River	Galway County Council	SAC;	Good	Moderate	Moderate	Good	2022-2027	At risk	Nutrients	Ag	Kilcrow	LAWPRO, Restoration	View WB Page	View WB on EPA Water Map
25C	IE_SH_25K010360	KILCROW_050	River	Galway County Council		Moderate	Poor	Poor	Good	2022-2027	At risk	Morphological, Nutrients	HYMO, Ag	Kilcrow	LAWPRO, Restoration	View WB Page	View WB on EPA Water Map
25C	IE_SH_25K010500	KILCROW_060	River	Galway County Council		Poor	Poor	Poor	Good	2022-2027	At risk	Morphological, Nutrients	Ag, HYMO	Kilcrow	LAWPRO, Restoration	View WB Page	View WB on EPA Water Map
25C	IE_SH_25K010700	KILCROW_070	River	Galway County Council	SAC; SPA; NSA;	Moderate	Moderate	Moderate	Good	2022-2027	At risk	UnknownImpactType	Unknown	Kilcrow	LAWPRO, Restoration	View WB Page	View WB on EPA Water Map
25C	IE_SH_25K070600	KILFADDA CASTLE STREAM_010	River	Tipperary County Council	SAC;	Good	Moderate	Moderate	Good	2022-2027	At risk	Sediment, Nutrients	Ag			View WB Page	View WB on EPA Water Map
25C	IE_SH_25K190950	KNOCKSHANGARRY_010	River	Galway County Council		Unassigned	Moderate	Moderate	Good	2022-2027	Review			Cappagh (Galway)	LAWPRO, Restoration	View WB Page	View WB on EPA Water Map

25C	IE_SH_25K720870	KILRATEERA_UPPER_010	River	Clare County Council	SPA; NSA;	Unassigned	Moderate	Good	Good	2021 or earlier	Review			Woodford	LAWPRO, Restoration	View WB Page	View WB on EPA Water Map
25C	IE_SH_25L050200	LORRHA STREAM_010	River	Tipperary County Council	SAC;	Moderate	Moderate	Moderate	Good	2022-2027	At risk	Nutrients	Ag	Lorrha Stream	LAWPRO, Restoration	View WB Page	View WB on EPA Water Map
25C	IE_SH_25L050300	LORRHA STREAM_020	River	Tipperary County Council	SAC; SPA; NSA;	Moderate	Poor	Poor	Good	2022-2027	At risk	Sediment, Morphological, Nutrients, OtherSignificantImpacts	IS, Ag, Peat	Lorrha Stream	LAWPRO, Restoration	View WB Page	View WB on EPA Water Map
25C	IE_SH_25L060100	LISDUFF (KILCROW)_010	River	Galway County Council		Good	Good	Moderate	Good	2022-2027	At risk	Nutrients	Ag	Kilcrow	LAWPRO, Restoration	View WB Page	View WB on EPA Water Map
25C	IE_SH_25L060400	LISDUFF (KILCROW)_020	River	Galway County Council		Poor	Poor	Poor	Good	2022-2027	At risk	Morphological, Chemical, Nutrients	HYMO, Ag, M+Q	Kilcrow	LAWPRO, Restoration	View WB Page	View WB on EPA Water Map
25C	IE_SH_25L080081	LOWER VILLAGE TRIB_010	River	Galway County Council	SPA; NSA;	Unassigned	Good	Good	Good	2021 or earlier	Review			Woodford	LAWPRO, Restoration	View WB Page	View WB on EPA Water Map
25C	IE_SH_25M290660	MOANNAKEEBA_EAST_010	River	Galway County Council	SAC; SPA; NSA;	Unassigned	Poor	Good	Good	2021 or earlier	Review			Woodford	LAWPRO, Restoration	View WB Page	View WB on EPA Water Map
25C	IE_SH_25N010050	NENAGH_010	River	Tipperary County Council		Good	High	Good	Good	2021 or earlier	Not at risk			Upper Nenagh	Tipperary County Council, Protection	View WB Page	View WB on EPA Water Map
25C	IE_SH_25N010100	NENAGH_020	River	Tipperary County Council		Good	Good	Good	Good	2021 or earlier	Not at risk			Upper Nenagh	Tipperary County Council, Protection	View WB Page	View WB on EPA Water Map
25C	IE_SH_25N010200	NENAGH_030	River	Tipperary County Council		Good	Moderate	Good	Good	2021 or earlier	Not at risk			Upper Nenagh	Tipperary County Council, Protection	View WB Page	View WB on EPA Water Map
25C	IE_SH_25N010300	NENAGH_040	River	Tipperary County Council		Good	Good	Moderate	Good	2022-2027	At risk	Nutrients	Ag	Upper Nenagh	Tipperary County Council, Protection	View WB Page	View WB on EPA Water Map
25C	IE_SH_25N010500	NENAGH_050	River	Tipperary County Council		Good	Moderate	Moderate	Good	2022-2027	Review			Upper Nenagh	Tipperary County Council, Protection	View WB Page	View WB on EPA Water Map
25C	IE_SH_25N010700	NENAGH_060	River	Tipperary County Council	DWPA; NSA;	Moderate	Moderate	Moderate	Good	2022-2027	At risk	Nutrients, Organic	Ag, UR, Ind	Lower Nenagh and Clareen	LAWPRO, Restoration	View WB Page	View WB on EPA Water Map
25C	IE_SH_25N010800	NENAGH_070	River	Tipperary County Council	SPA; NSA;	Moderate	Moderate	Moderate	Good	2022-2027	At risk	Morphological	HYMO	Lower Nenagh and Clareen	LAWPRO, Restoration	View WB Page	View WB on EPA Water Map
25C	IE_SH_25N030200	NEWTOWN_010	River	Tipperary County Council	SPA; NSA;	Good	Good	Good	Good	2021 or earlier	Not at risk					View WB Page	View WB on EPA Water Map
25C	IE_SH_25N120710	NENAGH TRIBUTARY_010	River	Tipperary County Council		Unassigned	Poor	Moderate	Good	2022-2027	Review					View WB Page	View WB on EPA Water Map
25C	IE_SH_25O010040	OLLATRIM_010	River	Tipperary County Council		Poor	Poor	Poor	Good	2022-2027	At risk	Morphological, Nutrients	For, Ag, M+Q	Ollatrim	LAWPRO, Restoration	View WB Page	View WB on EPA Water Map
25C	IE_SH_25O010080	OLLATRIM_020	River	Tipperary County Council		Good	Moderate	Moderate	Good	2022-2027	At risk	Nutrients	For	Ollatrim	LAWPRO, Restoration	View WB Page	View WB on EPA Water Map
25C	IE_SH_25O010150	OLLATRIM_030	River	Tipperary County Council		High	Good	Moderate	High	2022-2027	At risk	Hydrological, Chemical, Nutrients, OtherSignificantImpacts	Ag, Unknown	Ollatrim	LAWPRO, Restoration	View WB Page	View WB on EPA Water Map
25C	IE_SH_25O010250	OLLATRIM_040	River	Tipperary County Council		Good	Good	Moderate	Good	2022-2027	At risk	UnknownImpactType	Unknown	Ollatrim	LAWPRO, Restoration	View WB Page	View WB on EPA Water Map
25C	IE_SH_25O010400	OLLATRIM_050	River	Tipperary County Council		Good	Moderate	Moderate	Good	2022-2027	At risk	Hydrological, Chemical, Nutrients, OtherSignificantImpacts	Ag, Unknown	Ollatrim	LAWPRO, Restoration	View WB Page	View WB on EPA Water Map
25C	IE_SH_25S080400	SCARRIFF STREAM_010	River	Clare County Council		Moderate	Poor	Poor	Good	2022-2027	At risk	Sediment, Morphological, Nutrients	For, Ag	Graney River	LAWPRO, Restoration	View WB Page	View WB on EPA Water Map
25C	IE_SH_25S690670	South Boleynagoagh_010	River	Clare County Council	SPA; NSA;	Unassigned	Good	Moderate	Good	2022-2027	Review			Woodford	LAWPRO, Restoration	View WB Page	View WB on EPA Water Map
25C	IE_SH_25T650910	Terryglass_010	River	Tipperary County Council	NSA;	Unassigned	Moderate	Moderate	Good	2022-2027	Review					View WB Page	View WB on EPA Water Map
25C	IE_SH_25W010040	WOODFORD (GALWAY)_010	River	Galway County Council		Moderate	Moderate	Moderate	Good	2022-2027	At risk	Morphological, Nutrients	For	Woodford	LAWPRO, Restoration	View WB Page	View WB on EPA Water Map
25C	IE_SH_25W010200	WOODFORD (GALWAY)_020	River	Galway County Council		Moderate	Moderate	Good	Good	2021 or earlier	Not at risk			Woodford	LAWPRO, Restoration	View WB Page	View WB on EPA Water Map
25C	IE_SH_25W010300	WOODFORD (GALWAY)_030	River	Galway County Council	SAC; SPA; NSA;	Good	Good	Moderate	Good	2022-2027	At risk	UnknownImpactType	Unknown	Woodford	LAWPRO, Restoration	View WB Page	View WB on EPA Water Map
25C	IE_SH_25Y020200	YOUGHAL (TIPPERARY)_010	River	Tipperary County Council	SPA;	Moderate	Moderate	Moderate	Good	2022-2027	At risk	Morphological, Nutrients	For, Ag			View WB Page	View WB on EPA Water Map