



Cycle 3

HA 22 Laune Maine Dingle Bay Catchment Report,  
May 2024

Introduction

Water Quality  
Summary

High Status  
Objectives

Water Quality  
Changes

WFD Risk

Significant  
Pressures

Action

Summary  
Information

# Introduction

This report provides an overview of the water quality in the Laune Maine Dingle Bay Catchment and the pressures impacting on water quality. This report is based on data up to 2021. The latest water quality data, dashboards and maps throughout this report are available on [catchments.ie](https://catchments.ie) and [EPA Water Map](https://epa.maps.ie).

The Laune Maine Dingle Bay Catchment includes the area drained by the Laune and Maine and all streams entering tidal water between Glanearagh Head and Clogher Head, Co. Kerry, draining a total area of 2,036km<sup>2</sup> (Figure 1). The largest urban centre in the catchment is Killarney. The other main urban centres in this catchment are Cahersiveen, Kilorglin, Castleisland and Dingle.

The Laune Maine Dingle Bay Catchment is divided into 19 subcatchments and has 145 surface water bodies and 16 groundwater bodies.

[View the Laune Maine Dingle Bay Catchment on the EPA Water Map](#)

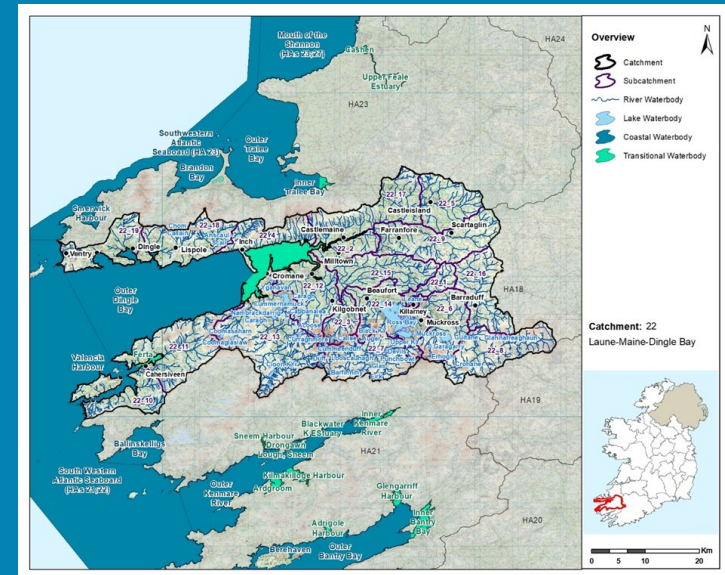
## Previous Catchment Assessments

Previous catchment assessments, which provide additional historic context and information, are archived on [catchments.ie](https://catchments.ie):

- [Cycle 2 Catchment Assessments – published September 2018](#)
- [Cycle 3 Draft Catchment Assessments – published September 2021](#)

## Online Dashboards

Links to online dashboards are provided in this report – these numbers may vary from those in this document as time progress and the online dashboards are updated based on the latest data and scientific assessments.



Overview of Subcatchments in the Laune Maine Dingle Bay Catchment

# Water Quality Summary

Introduction

Water Quality Summary

High Status Objectives

Water Quality Changes

WFD Risk

Significant Pressures

Action

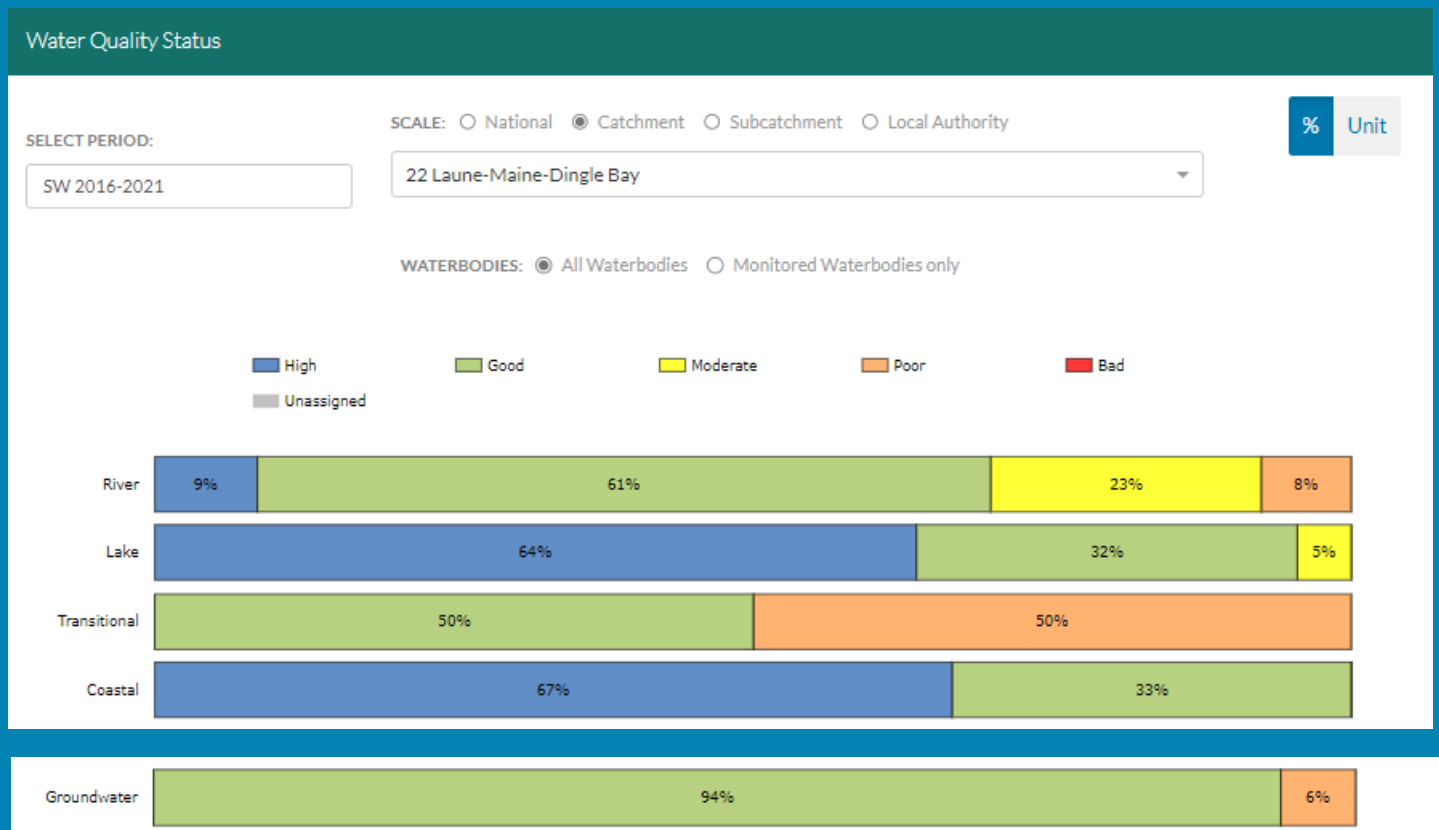
Summary Information

The dashboard below provides a breakdown of water quality status for surface and groundwater bodies in the Laune Maine Dingle Bay Catchment.

A total of 79% of surface waterbodies were at Good or High Ecological Status in the 2016-2021 monitoring period. Ninety-four percent of groundwater bodies were at Good status.

**Go to EPA Water Maps for WFD Status**

[EPA Water Map](#)



Water quality status 2016-2021 for the Laune Maine Dingle Bay Catchment.  
View Online Dashboard: <https://www.catchments.ie/data/#/dashboard/waterquality>

# High Status Objective Waterbodies

Introduction

High status waters are prioritised for protection and action.

Water Quality Summary

There are 35 waterbodies with a **High Ecological Status Objective (HSO)** in the Laune Maine Dingle Bay Catchment, with 27 currently not meeting their environmental objective of High.

High Status Objectives

Grants for septic tank upgrades may be available in high status objective catchment areas - you can learn more and check your Eircode for eligibility here: <https://www.gov.ie/en/publication/6cc1e-domestic-waste-water-treatment-systems-septic-tanks>

[View HSO river waterbodies in this catchment.](#)

See *Status and Risk / High Status Objective* for other waterbody types.

Water Quality Changes

WFD Risk

Significant Pressures

Action

Summary Information

Water Quality Status - High Status Objective Waterbodies

SCALE:  Catchment  Local Authority

SELECT TYPE:

	SW 2007-2009	SW 2010-2012	SW 2010-2015	SW 2013-2018	SW 2016-2021
BEHY (KERRY)_020 (River)	High	Good	Good	Good	Good
BROWN FLESK_020 (River)	Good	High	High	Good	Good
CAHERLEHILLAN STREAM_010 (River)	High	High	Good	Good	Good
Caragh (Lake)	High	Moderate	Moderate	Good	High
CARAGH_010 (River)	Unassigned	Good	Poor	Poor	Poor
CARAGH_020 (River)	Good	Good	Good	Good	Good
CARAGH_030 (River)	High	High	High	Poor	Poor
CARAGH_040 (River)	Moderate	Moderate	Moderate	Moderate	Moderate
COOMNACARRIG_010 (River)	Good	Good	Good	Good	High
CRINNAGH_010 (River)	High	High	High	High	High
Cummernamuck (Lake)	Moderate	Good	High	High	Good
DEENAGH_020 (River)	Good	High	High	Good	Good
EMLAGH_010 (River)	Good	High	High	Good	Good
Ferta (Transitional)	Unassigned	High	Good	Good	Good
FINOW_010 (River)	High	High	High	Good	Good

# High Status Objective Waterbodies (continued)

Introduction

Water Quality Summary

High Status Objectives

Water Quality Changes

WFD Risk

Significant Pressures

Action

Summary Information

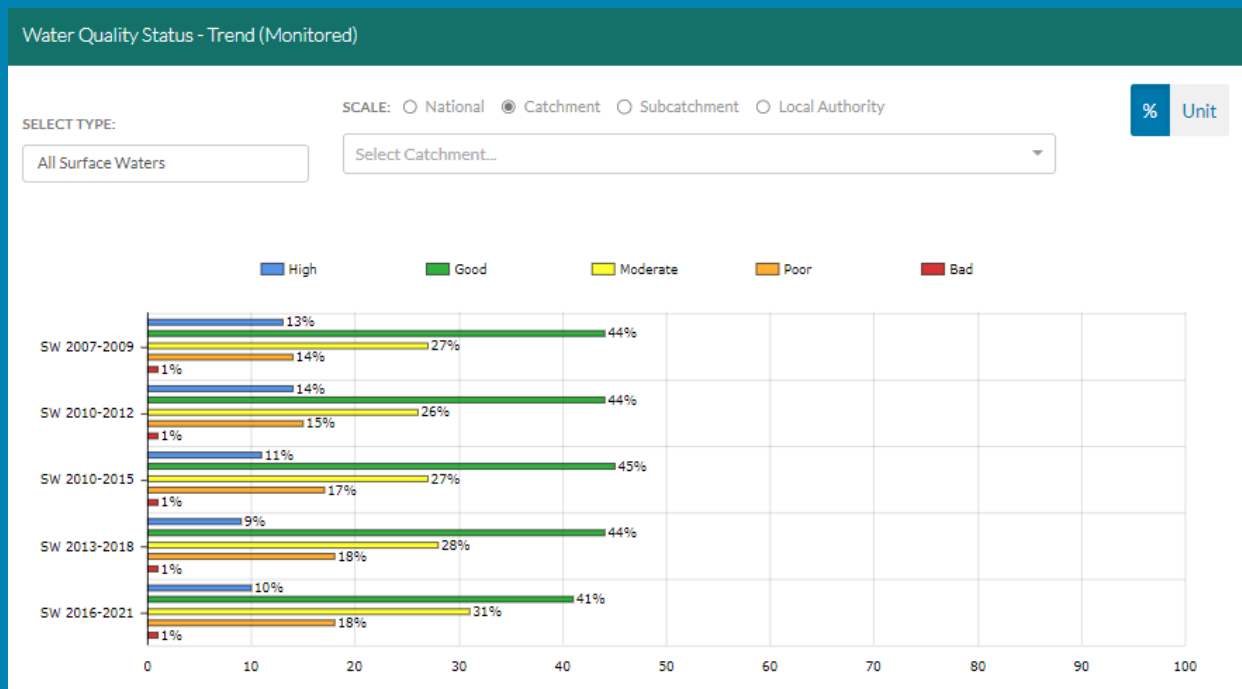
FLESK (KERRY)_020 (River)	High	High	High	Good	Good
FLESK (KERRY)_030 (River)	High	High	High	High	High
FLESK (KERRY)_040 (River)	High	High	High	Good	Good
FLESK (KERRY)_050 (River)	High	High	High	Good	High
GADDAGH_010 (River)	High	High	High	Good	Good
GEARHAMEEN_010 (River)	High	High	High	High	High
GEARHAMEEN_020 (River)	High	High	High	High	Moderate
GROIN_010 (River)	High	Good	High	Good	Good
LITTLE MAINE_010 (River)	Good	High	High	Moderate	Good
LOE_010 (River)	Good	High	High	Moderate	Poor
MEELAGH_010 (River)	High	Good	Good	Good	Good
Muckross (Lake)	High	High	High	High	High
OWENASCAUL_010 (River)	Moderate	High	High	High	Good
OWENREAGH_010 (River)	High	High	High	High	High
OWENROE (CARAGH)_010 (River)	Good	Good	Good	Good	Good
OWGARRIFF (FINOW)_010 (River)	Good	High	High	Good	Good
OWNEYKEAGH_010 (River)	High	High	High	Good	Good
Portmagee Channel (Coastal)	High	Moderate	Good	Good	Good
TEERMOYLE STREAM_010 (River)	High	High	Good	Good	Good
Valencia Harbour (Coastal)	Unassigned	Moderate	Good	Good	Good

*Water quality status for High Ecological Status Objective waterbodies.*

**View Online Dashboard:** <https://www.catchments.ie/data/#/dashboard/waterquality>

# Water Quality Changes

Below illustrates the changes in ecological status in monitored surface waterbodies over the last five monitoring cycles in the Laune Maine Dingle Bay Catchment. Nationally while there have been improvements in some waterbodies, these have been offset by declines elsewhere.



Ecological status trends for monitored surface waterbodies over the last five monitoring cycles in the Laune Maine Dingle Bay Catchment. **View online dashboard:** <https://www.catchments.ie/data/#/dashboard/waterquality>

A total of 107 (66%) waterbodies are currently meeting their environmental objective of Good or High Ecological Status.

	Total	Achieving Environmental Objectives (2016-2021)	High Status Environmental Objectives Waterbodies	Achieving High Status Environmental Objectives (2016-2021)
<b>Rivers</b>	93	47 (51%)	29	6 (21%)
<b>Canals</b>	-	-	-	-
<b>Lakes</b>	44	41 (93%)	3	2 (67%)
<b>Transitional</b>	2	0 (0%)	1	0 (0%)
<b>Coastal</b>	6	4 (67%)	-	-
<b>Groundwater</b>	16	15 (94%)	-	-

Introduction

Water Quality Summary

High Status Objectives

Water Quality Changes

WFD Risk

Significant Pressures

Action

Summary Information

# WFD Risk

Introduction

Water Quality Summary

High Status Objectives

Water Quality Changes

WFD Risk

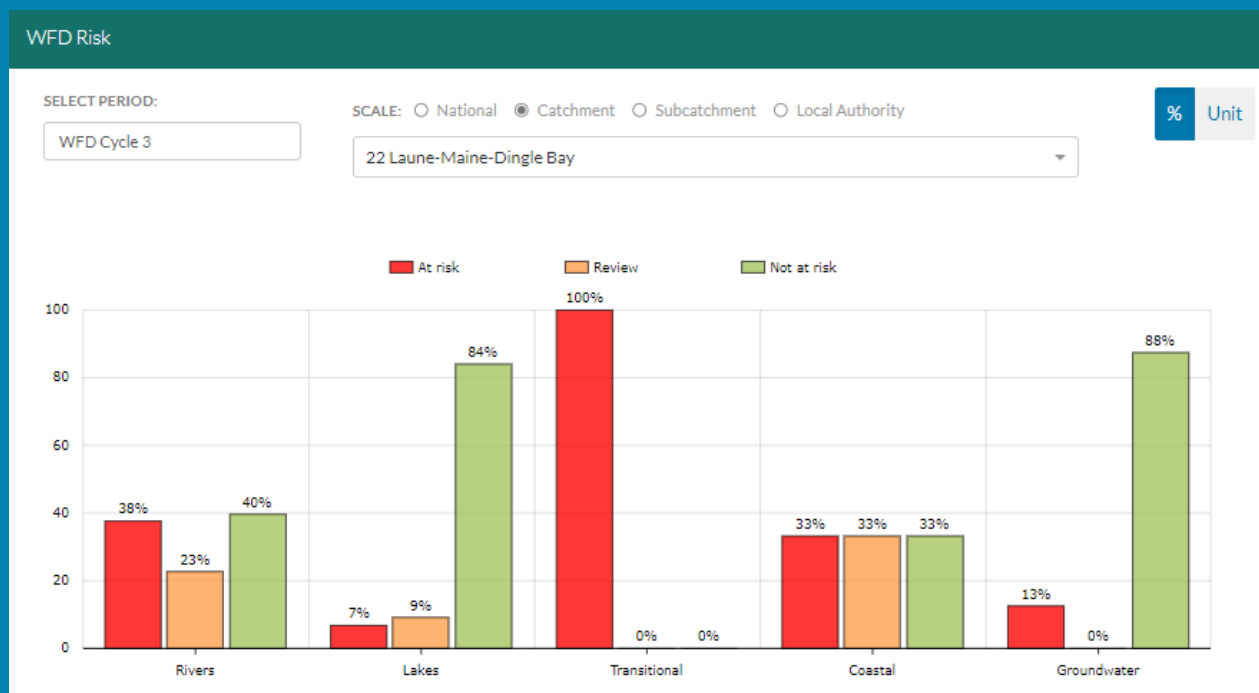
Significant Pressures

Action

Summary Information

A total of 44 (27%) waterbodies are *At Risk* of not meeting their environmental objective in the Laune Maine Dingle Bay Catchment, while 27 (17%) are under *Review* and 90 (56%) are *Not At Risk*.

Go to [EPA Water Map](#) to see *WFD Risk for this catchment*



WFD Risk for the Laune Maine Dingle Bay Catchment based on 2016-2021 data.  
View Online Dashboard: <https://www.catchments.ie/data/#/dashboard/waterquality>

There are currently no heavily modified water bodies (HMWBs) in the Laune Maine Dingle Bay Catchment.

There are no artificial waterbodies in the Laune Maine Dingle Bay Catchment.

The [EPA's characterisation outcome report](#) has more information on WFD Risk

Click [here](#) for more information on significant pressures

Introduction

Water Quality Summary

High Status Objectives

Water Quality Changes

WFD Risk

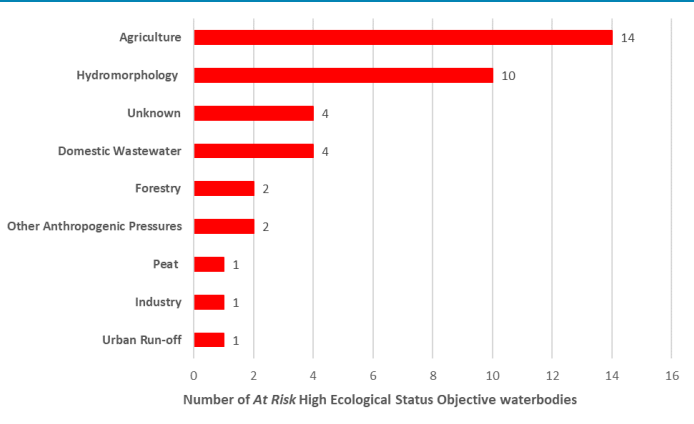
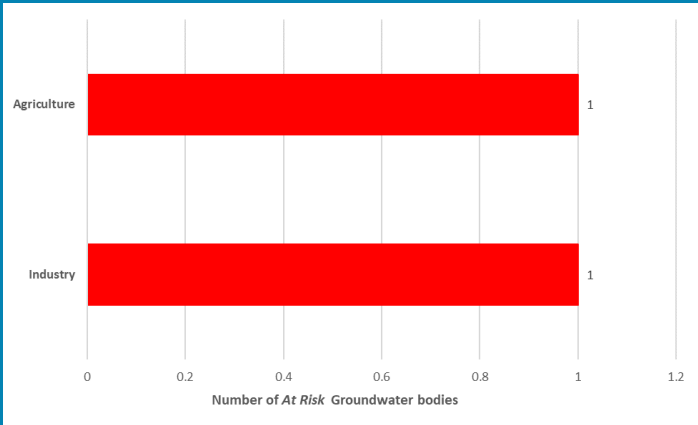
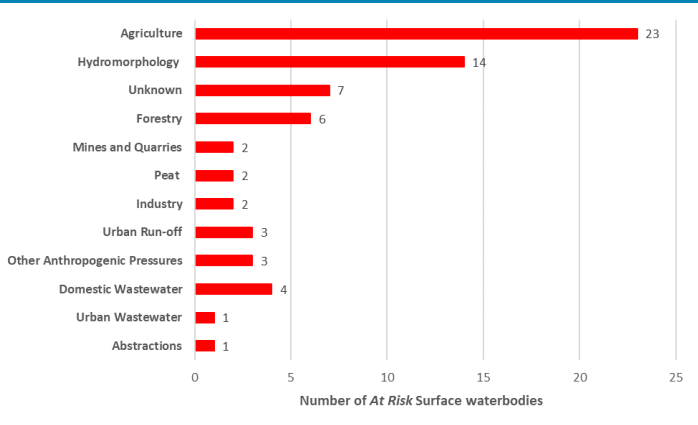
Significant Pressures

Action

Summary Information

# Significant Pressures driving risk

Significant pressure types impacting the 42 *At Risk* surface waterbodies and 2 groundwater bodies are broken down in the figures below, including significant pressure information for the 26 *At Risk* High Ecological Status Objective waterbodies.



The issues driven by these pressures are mainly altered morphological condition (habitat), nutrient pollution and altered hydrological condition (flows/levels) impacts for surface water and chemical quality diminution for surface water, chemical pollution and nutrient pollution for groundwaters. For more information, see <https://www.catchments.ie/data/#/dashboard/pressure?k=i351zs>.

*Go to the Summary Information section to get significant pressure and issue data for At Risk waterbodies within the Laune Maine Dingle Bay Catchment.*

Introduction

Water Quality  
Summary

High Status  
Objectives

Water Quality  
Changes

WFD Risk

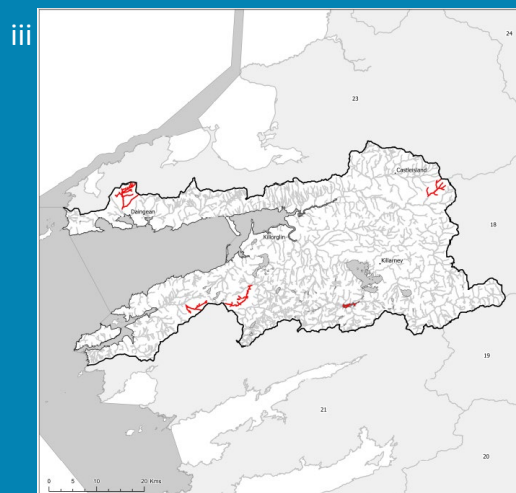
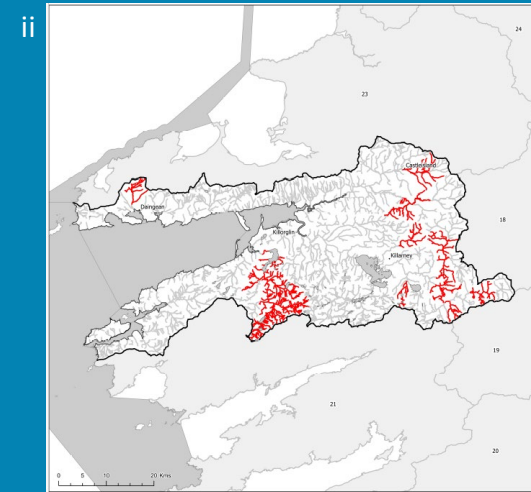
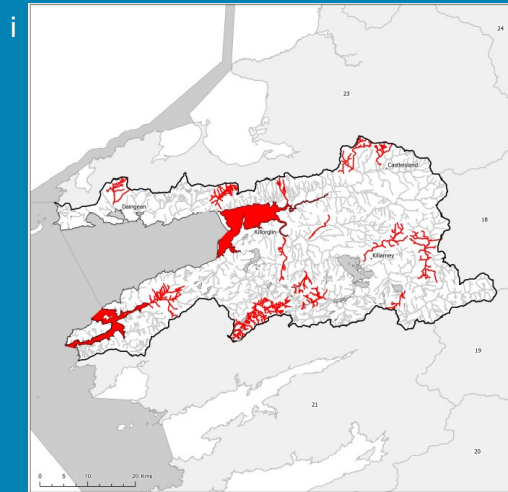
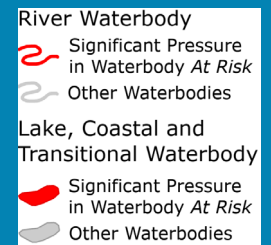
Significant  
Pressures

Action

Summary  
Information

## Significant Pressures

Agriculture is the top significant pressure impacting 54% of the 44 *At Risk* waterbodies within the Laune Maine Dingle Bay Catchment, followed by 32% impacted by Hydromorphological Pressures and 14% by Forestry.



**The *catchments.ie* dashboards will show all significant pressures identified for this catchment.**

[www.catchments.ie/data/#/dashboard/p/ressure](http://www.catchments.ie/data/#/dashboard/p/ressure)

**Go to the [EPA Water Maps](#) for the locations of all significant pressure types identified for this catchment**

*Locations of At Risk surface waterbodies impacted by i) Agriculture, ii) Hydromorphological Pressures and iii) Forestry.*

Introduction

Water Quality  
Summary

High Status  
Objectives

Water Quality  
Changes

WFD Risk

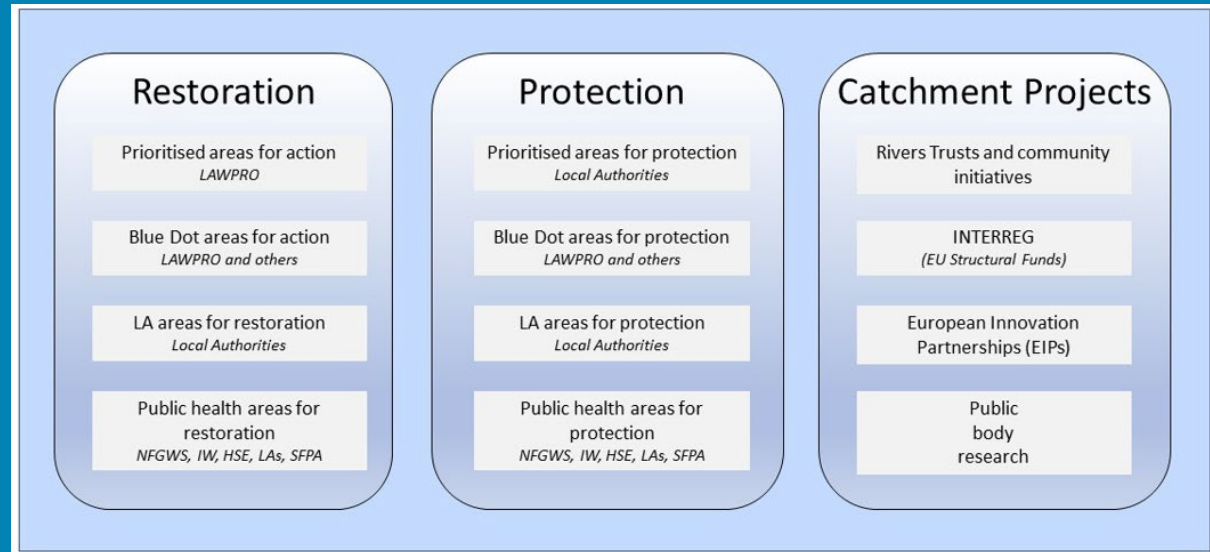
Significant  
Pressures

Action

Summary  
Information

## Priority Areas for Action

A number of waterbodies have been prioritised through the selection of Areas for Action. There were five Priority Areas for Action identified for the second river basin management planning cycle in the Laune Maine Dingle Bay Catchment. This has increased to a total of nine Areas for Restoration and two Catchment Projects for the third cycle. ***Go to the summary information section to get Area for Action information for waterbodies within the Laune Maine Dingle Bay Catchment.***



*Types of Areas for Action under the third cycle River Basin Management Plan*

- View the current progress of Areas for Action and Summary Reports completed by LAWPRO, on catchments.ie and the EPA Water Map:
  - <https://www.catchments.ie/data/#/areaforaction>
  - [https://gis.epa.ie/EPAMaps/default?easting=?&northing=?&lid=EPA:WFD\\_AreasForAction](https://gis.epa.ie/EPAMaps/default?easting=?&northing=?&lid=EPA:WFD_AreasForAction)
- LAWPRO have also published detailed desktop studies on Prioritised Areas for Action (PAAs) which are available their website: <https://lawaters.ie/desktop-studies/>
- Information on Areas for Action for the second cycle is available in Cycle 2 Catchment Assessments which have been archived on catchments.ie:  
<https://www.catchments.ie/download/cycle-2-catchment-assessments-published-september-2018/>

Introduction

Water Quality  
Summary

High Status  
Objectives

Water Quality  
Changes

WFD Risk

Significant  
Pressures

Action

Summary  
Information

## Summary information for all waterbodies in the Laune Maine Dingle Bay Catchment

The next page provides a table with a breakdown of key information for all waterbodies in this catchment. The key is provided below. Additional information for each waterbody is available on <https://www.catchments.ie/data>, including a breakdown of status, a monitoring schedule for monitored waterbodies and downloadable chemistry results, where available.

<b>Protected Area categories</b>	BW: Bathing Water DW: Drinking Water Fish: Salmonid Waters NSA: Nutrient Sensitive Areas SAC: Special Area of Conservation, Natura 2000 (water dependent habitats and species) SF: Shellfish Area SPA: Special Area of Protection, Natura 2000 (water dependent habitat and species)
<b>Significant pressure* types categories</b>  <i>* For At Risk waterbodies only</i>	Ab: Abstractions Ag: Agriculture Aq: Aquaculture At: Atmospheric DWW: Domestic Wastewater For: Forestry HPS: Historically polluted sites HYMO: Hydromorphology Ind: Industry IS: Invasive Species M+Q: Mines and Quarries Peat: Peat Drainage and Extraction UR: Urban Run-Off UWW: Urban Wastewater Was: Waste WT: Water Treatment

Catchment Code	Waterbody (WB) Code	WB Name	WB Type	Local Authority	Protected Area	Status 10-15	Status 13-18	Status 16-21	Environmental Objective	Environmental Objective Date	WFD Risk 16-21	Significant Issue(s)	Significant Pressure(s)	Area for Action (AFA)	AFA (lead, type)	Link to WB page on catchments.ie	Link to WB on EPA Water Map
22, 23, 27	IE_SH_010_0000	Southwestern Atlantic Seaboard (HA 23)	Coastal	Kerry County Council	SAC; SPA;	Unassigned	High	High	Good	2021 or earlier	Not at risk					<a href="#">View WB Page</a>	<a href="#">View WB on EPA Water Map</a>
20, 21, 22, 23	IE_SW_150_0000	South Western Atlantic Seaboard (HAs 21;22)	Coastal	Kerry County Council	BW; SAC; SPA; SF;	Unassigned	High	High	Good	2021 or earlier	Not at risk					<a href="#">View WB Page</a>	<a href="#">View WB on EPA Water Map</a>
22	IE_SW_210_0000	Portmagee Channel	Coastal	Kerry County Council	SAC; SPA; SF;	Good	Good	Good	High	2022-2027	At risk	Nutrients, Organic	DWTS, Ag			<a href="#">View WB Page</a>	<a href="#">View WB on EPA Water Map</a>
22	IE_SW_220_0000	Valencia Harbour	Coastal	Kerry County Council	BW; SAC; SPA; SF;	Good	Good	Good	High	2022-2027	At risk	Organic	DWTS, Ag	Valencia Harbour	LAWPRO, Restoration	<a href="#">View WB Page</a>	<a href="#">View WB on EPA Water Map</a>
22	IE_SW_230_0000	Outer Dingle Bay	Coastal	Kerry County Council	BW; SAC; SPA; SF;	Unassigned	High	High	Good	2021 or earlier	Review					<a href="#">View WB Page</a>	<a href="#">View WB on EPA Water Map</a>
22	IE_SW_240_0000	Dingle Harbour	Coastal	Kerry County Council	SPA;	Unassigned	Good	High	Good	2021 or earlier	Review					<a href="#">View WB Page</a>	<a href="#">View WB on EPA Water Map</a>
18, 22, 23, 24	IE_SH_G_001	Abbeyfeale	Groundwater	Kerry County Council	DWPA; SAC	Good	Good	Good	Good	2021 or earlier	Not at risk					<a href="#">View WB Page</a>	<a href="#">View WB on EPA Water Map</a>
22, 23	IE_SH_G_044	Brandon Head	Groundwater	Kerry County Council	DWPA; SAC	Good	Good	Good	Good	2021 or earlier	Not at risk					<a href="#">View WB Page</a>	<a href="#">View WB on EPA Water Map</a>
22, 23	IE_SH_G_223	Spa	Groundwater	Kerry County Council	DWPA; SAC	Good	Good	Good	Good	2021 or earlier	Not at risk					<a href="#">View WB Page</a>	<a href="#">View WB on EPA Water Map</a>
22, 23	IE_SH_G_226	Tralee	Groundwater	Kerry County Council	DWPA; SAC	Good	Good	Good	Good	2021 or earlier	Not at risk					<a href="#">View WB Page</a>	<a href="#">View WB on EPA Water Map</a>
18, 19, 20, 21, 22	IE_SW_G_005	Ballinhassig West	Groundwater	Cork County Council	DWPA; SAC	Good	Good	Good	Good	2021 or earlier	Not at risk					<a href="#">View WB Page</a>	<a href="#">View WB on EPA Water Map</a>
19, 20, 21, 22	IE_SW_G_019	Beara Sneem	Groundwater	Kerry County Council	DWPA; SAC	Good	Good	Good	Good	2021 or earlier	Not at risk					<a href="#">View WB Page</a>	<a href="#">View WB on EPA Water Map</a>
18, 19, 21, 22	IE_SW_G_022	Cahersiveen	Groundwater	Kerry County Council	DWPA; SAC	Good	Good	Good	Good	2021 or earlier	Not at risk					<a href="#">View WB Page</a>	<a href="#">View WB on EPA Water Map</a>
22	IE_SW_G_023	Cahersiveen Islands	Groundwater	Kerry County Council	DWPA; SAC	Good	Good	Good	Good	2021 or earlier	Not at risk					<a href="#">View WB Page</a>	<a href="#">View WB on EPA Water Map</a>
22, 23	IE_SW_G_026	Castlemaine	Groundwater	Kerry County Council	DWPA; SAC	Good	Good	Good	Good	2021 or earlier	Not at risk					<a href="#">View WB Page</a>	<a href="#">View WB on EPA Water Map</a>
22, 23	IE_SW_G_033	Dingle	Groundwater	Kerry County Council	DWPA; SAC	Good	Good	Good	Good	2021 or earlier	Not at risk					<a href="#">View WB Page</a>	<a href="#">View WB on EPA Water Map</a>
17, 18, 19, 22	IE_SW_G_037	Glenville	Groundwater	Cork County Council	DWPA; SAC	Good	Good	Good	Good	2021 or earlier	Not at risk					<a href="#">View WB Page</a>	<a href="#">View WB on EPA Water Map</a>
22	IE_SW_G_048	Laune Muckross	Groundwater	Kerry County Council	DWPA; SAC	Good	Good	Good	Good	2021 or earlier	At risk	ChemicalQualityDiminution ForSW, Nutrients	Ag			<a href="#">View WB Page</a>	<a href="#">View WB on EPA Water Map</a>
22	IE_SW_G_049	Industrial Facility (P0018-01)	Groundwater	Kerry County Council	DWPA; SAC	Poor	Poor	Poor	Good	2022-2027	At risk	Chemical, ChemicalQualityDiminution ForSW	Ind			<a href="#">View WB Page</a>	<a href="#">View WB on EPA Water Map</a>
18, 22, 23, 24	IE_SW_G_070	Rathmore West	Groundwater	Cork County Council	DWPA; SAC	Good	Good	Good	Good	2021 or earlier	Not at risk					<a href="#">View WB Page</a>	<a href="#">View WB on EPA Water Map</a>
18, 22, 23	IE_SW_G_073	Scartaglin	Groundwater	Kerry County Council	DWPA; SAC	Good	Good	Good	Good	2021 or earlier	Not at risk					<a href="#">View WB Page</a>	<a href="#">View WB on EPA Water Map</a>
22	IE_SW_G_095	Killorglin-Killarney Gravels	Groundwater	Kerry County Council	DWPA; SAC	Good	Good	Good	Good	2021 or earlier	Not at risk					<a href="#">View WB Page</a>	<a href="#">View WB on EPA Water Map</a>
22	IE_SW_22_145	Duff	Lake	Kerry County Council	SAC;	Unassigned	High	High	Good	2021 or earlier	Not at risk					<a href="#">View WB Page</a>	<a href="#">View WB on EPA Water Map</a>
22	IE_SW_22_148	Black KY	Lake	Kerry County Council	SAC;	Unassigned	Good	Good	Good	2021 or earlier	Not at risk					<a href="#">View WB Page</a>	<a href="#">View WB on EPA Water Map</a>
22	IE_SW_22_149	Crohane	Lake	Kerry County Council	SAC;	Unassigned	High	High	Good	2021 or earlier	Not at risk					<a href="#">View WB Page</a>	<a href="#">View WB on EPA Water Map</a>
22	IE_SW_22_152	Glannafreaghaun	Lake	Kerry County Council	DWPA; SAC;	Unassigned	High	High	Good	2021 or earlier	Not at risk					<a href="#">View WB Page</a>	<a href="#">View WB on EPA Water Map</a>
22	IE_SW_22_153	Coomloughra	Lake	Kerry County Council	SAC;	Unassigned	High	High	Good	2021 or earlier	Not at risk					<a href="#">View WB Page</a>	<a href="#">View WB on EPA Water Map</a>
22	IE_SW_22_154	Managh	Lake	Kerry County Council	SAC;	Unassigned	High	High	Good	2021 or earlier	Not at risk					<a href="#">View WB Page</a>	<a href="#">View WB on EPA Water Map</a>
22	IE_SW_22_156	Devils Punchbowl	Lake	Kerry County Council	SAC; SPA;	Unassigned	High	High	Good	2021 or earlier	Not at risk					<a href="#">View WB Page</a>	<a href="#">View WB on EPA Water Map</a>
22	IE_SW_22_160	Erhogh	Lake	Kerry County Council	SAC;	Unassigned	High	High	Good	2021 or earlier	Not at risk					<a href="#">View WB Page</a>	<a href="#">View WB on EPA Water Map</a>
22	IE_SW_22_161	Reagh Macgilllicuddy Reeks	Lake	Kerry County Council	SAC;	Unassigned	High	High	Good	2021 or earlier	Not at risk					<a href="#">View WB Page</a>	<a href="#">View WB on EPA Water Map</a>
22	IE_SW_22_165	Doo KY	Lake	Kerry County Council	SAC; SPA;	Unassigned	Good	Good	Good	2021 or earlier	Not at risk					<a href="#">View WB Page</a>	<a href="#">View WB on EPA Water Map</a>
22	IE_SW_22_168	Curraghmore	Lake	Kerry County Council	SAC;	Unassigned	High	High	Good	2021 or earlier	Not at risk					<a href="#">View WB Page</a>	<a href="#">View WB on EPA Water Map</a>
22	IE_SW_22_169	Garagarry	Lake	Kerry County Council	SAC;	Unassigned	High	High	Good	2021 or earlier	Not at risk					<a href="#">View WB Page</a>	<a href="#">View WB on EPA Water Map</a>
22	IE_SW_22_172	Guitane	Lake	Kerry County Council	DWPA; SAC;	Good	Good	Good	Good	2021 or earlier	Not at risk					<a href="#">View WB Page</a>	<a href="#">View WB on EPA Water Map</a>
22	IE_SW_22_173	Auger	Lake	Kerry County Council	SAC;	Unassigned	High	High	Good	2021 or earlier	Not at risk					<a href="#">View WB Page</a>	<a href="#">View WB on EPA Water Map</a>
22	IE_SW_22_174	Eagher	Lake	Kerry County Council	SAC;	Unassigned	High	High	Good	2021 or earlier	Not at risk					<a href="#">View WB Page</a>	<a href="#">View WB on EPA Water Map</a>
22	IE_SW_22_176	Cummeenapeasta	Lake	Kerry County Council	SAC;	Unassigned	High	High	Good	2021 or earlier	Not at risk					<a href="#">View WB Page</a>	<a href="#">View WB on EPA Water Map</a>
22	IE_SW_22_177	Glas	Lake	Kerry County Council	SAC;	Unassigned	High	High	Good	2021 or earlier	Not at risk					<a href="#">View WB Page</a>	<a href="#">View WB on EPA Water Map</a>

22	IE_SW_22_178	Looscaunagh	Lake	Kerry County Council	SAC; SPA;	Unassigned	Good	Good	Good	2021 or earlier	Not at risk					<a href="#">View WB Page</a>	<a href="#">View WB on EPA Water Map</a>
22	IE_SW_22_179	Gouragh	Lake	Kerry County Council	SAC;	Unassigned	High	High	Good	2021 or earlier	Not at risk					<a href="#">View WB Page</a>	<a href="#">View WB on EPA Water Map</a>
22	IE_SW_22_181	Cummeenduff	Lake	Kerry County Council	SAC;	Unassigned	Good	Good	Good	2021 or earlier	Not at risk					<a href="#">View WB Page</a>	<a href="#">View WB on EPA Water Map</a>
22	IE_SW_22_182	Callee	Lake	Kerry County Council	DWPA; SAC;	Unassigned	High	High	Good	2021 or earlier	Review					<a href="#">View WB Page</a>	<a href="#">View WB on EPA Water Map</a>
22	IE_SW_22_184	Muckcross	Lake	Kerry County Council	SAC; SPA;	High	High	High	High	2021 or earlier	Not at risk					<a href="#">View WB Page</a>	<a href="#">View WB on EPA Water Map</a>
22	IE_SW_22_186	Upper KY	Lake	Kerry County Council	SAC; SPA;	Moderate	Moderate	Moderate	Good	2022-2027	At risk	Hydrological	For			<a href="#">View WB Page</a>	<a href="#">View WB on EPA Water Map</a>
22	IE_SW_22_187	Long Range	Lake	Kerry County Council	SAC; SPA;	Unassigned	Good	Good	Good	2021 or earlier	Not at risk					<a href="#">View WB Page</a>	<a href="#">View WB on EPA Water Map</a>
22	IE_SW_22_189	Anscaul - Scail	Lake	Kerry County Council	SAC; SPA;	Unassigned	Good	Good	Good	2021 or earlier	Not at risk					<a href="#">View WB Page</a>	<a href="#">View WB on EPA Water Map</a>
22	IE_SW_22_192	Reagh Mullaghanattin	Lake	Kerry County Council	SAC;	Unassigned	High	High	Good	2021 or earlier	Not at risk					<a href="#">View WB Page</a>	<a href="#">View WB on EPA Water Map</a>
22	IE_SW_22_196	Coomnacronia	Lake	Kerry County Council	SAC;	Unassigned	High	High	Good	2021 or earlier	Not at risk					<a href="#">View WB Page</a>	<a href="#">View WB on EPA Water Map</a>
22	IE_SW_22_197	Coomaglaslaw	Lake	Kerry County Council	DWPA; SAC;	Unassigned	High	High	Good	2021 or earlier	Not at risk					<a href="#">View WB Page</a>	<a href="#">View WB on EPA Water Map</a>
22	IE_SW_22_198	Coomeeneragh	Lake	Kerry County Council	SAC;	Unassigned	High	High	Good	2021 or earlier	Not at risk					<a href="#">View WB Page</a>	<a href="#">View WB on EPA Water Map</a>
22	IE_SW_22_199	Cummemnamuck	Lake	Kerry County Council	DWPA; SAC;	High	High	Good	High	2022-2027	At risk	Nutrients	Unknown			<a href="#">View WB Page</a>	<a href="#">View WB on EPA Water Map</a>
22	IE_SW_22_200	Nambrackdarrig Caragh	Lake	Kerry County Council	SAC;	Unassigned	High	High	Good	2021 or earlier	Not at risk					<a href="#">View WB Page</a>	<a href="#">View WB on EPA Water Map</a>
22	IE_SW_22_201	Yganavan	Lake	Kerry County Council	SAC;	Unassigned	Unassigned	Good	Good	2021 or earlier	Review					<a href="#">View WB Page</a>	<a href="#">View WB on EPA Water Map</a>
22	IE_SW_22_202	Nambrackdarrig Glenbeigh	Lake	Kerry County Council	SAC;	Unassigned	Unassigned	Good	Good	2021 or earlier	Not at risk					<a href="#">View WB Page</a>	<a href="#">View WB on EPA Water Map</a>
22	IE_SW_22_205	Coomasaharn	Lake	Kerry County Council	SAC;	Unassigned	High	High	Good	2021 or earlier	Review					<a href="#">View WB Page</a>	<a href="#">View WB on EPA Water Map</a>
22	IE_SW_22_206	Cloon KY	Lake	Kerry County Council	SAC;	Unassigned	High	High	Good	2021 or earlier	Review					<a href="#">View WB Page</a>	<a href="#">View WB on EPA Water Map</a>
22	IE_SW_22_207	Caragh	Lake	Kerry County Council	SAC;	Moderate	Good	High	High	2021 or earlier	Not at risk					<a href="#">View WB Page</a>	<a href="#">View WB on EPA Water Map</a>
22	IE_SW_22_208	Acoose	Lake	Kerry County Council	SAC;	Good	Good	Good	Good	2021 or earlier	Not at risk					<a href="#">View WB Page</a>	<a href="#">View WB on EPA Water Map</a>
22	IE_SW_22_209	Ross Bay	Lake	Kerry County Council	SAC; SPA; NSA;	Unassigned	Moderate	Moderate	Good	2022-2027	At risk	Nutrients, Organic	UR, UWW	Ross Bay	LAWPRO, Restoration	<a href="#">View WB Page</a>	<a href="#">View WB on EPA Water Map</a>
22	IE_SW_22_210	Leane	Lake	Kerry County Council	SAC; SPA; NSA;	Good	Good	Good	Good	2021 or earlier	Not at risk					<a href="#">View WB Page</a>	<a href="#">View WB on EPA Water Map</a>
22	IE_SW_22_25	Cappanalea	Lake	Kerry County Council	SAC;	Unassigned	Unassigned	Good	Good	2021 or earlier	Not at risk					<a href="#">View WB Page</a>	<a href="#">View WB on EPA Water Map</a>
22	IE_SW_22_26	Nakirka	Lake	Kerry County Council	SAC;	Unassigned	High	High	Good	2021 or earlier	Not at risk					<a href="#">View WB Page</a>	<a href="#">View WB on EPA Water Map</a>
22	IE_SW_22_39	BALLINTLEAVE COMMONS	Lake	Kerry County Council	SAC;	Unassigned	Unassigned	Good	Good	2021 or earlier	Not at risk					<a href="#">View WB Page</a>	<a href="#">View WB on EPA Water Map</a>
22	IE_SW_22_58	Mount Eagle	Lake	Kerry County Council	DWPA;	Unassigned	High	High	Good	2021 or earlier	Not at risk					<a href="#">View WB Page</a>	<a href="#">View WB on EPA Water Map</a>
22	IE_SW_22_67	Bhearna na Gaoithe	Lake	Kerry County Council	DWPA; SAC;	Unassigned	High	High	Good	2021 or earlier	Not at risk					<a href="#">View WB Page</a>	<a href="#">View WB on EPA Water Map</a>
22	IE_SW_22B010600	BEHEENAGH_010	River	Kerry County Council	DWPA; SAC;	Good	Good	Moderate	Good	2022-2027	Review					<a href="#">View WB Page</a>	<a href="#">View WB on EPA Water Map</a>
22	IE_SW_22B020800	BEHY (KERRY)_010	River	Kerry County Council	SAC;	Good	Good	Good	Good	2021 or earlier	Not at risk					<a href="#">View WB Page</a>	<a href="#">View WB on EPA Water Map</a>
22	IE_SW_22B021000	BEHY (KERRY)_020	River	Kerry County Council	SAC;	Good	Good	Good	High	2022-2027	At risk	UnknownImpactType	Unknown			<a href="#">View WB Page</a>	<a href="#">View WB on EPA Water Map</a>
22	IE_SW_22B021300	BEHY (KERRY)_030	River	Kerry County Council	SAC;	Good	Moderate	Moderate	Good	2022-2027	At risk	UnknownImpactType	Unknown			<a href="#">View WB Page</a>	<a href="#">View WB on EPA Water Map</a>
22	IE_SW_22B030100	BROWN FLESK_010	River	Kerry County Council	Fish;	Good	Good	Poor	Good	2022-2027	Review					<a href="#">View WB Page</a>	<a href="#">View WB on EPA Water Map</a>
22	IE_SW_22B030250	BROWN FLESK_020	River	Kerry County Council	Fish;	High	Good	Good	High	2022-2027	At risk	Morphological	HYMO			<a href="#">View WB Page</a>	<a href="#">View WB on EPA Water Map</a>
22	IE_SW_22B030500	BROWN FLESK_030	River	Kerry County Council	Fish;	Good	Good	Good	Good	2021 or earlier	Not at risk					<a href="#">View WB Page</a>	<a href="#">View WB on EPA Water Map</a>
22	IE_SW_22B390780	BOOLA_010	River	Kerry County Council	SAC;	Unassigned	Good	Moderate	Good	2022-2027	Review			Valencia Harbour	LAWPRO, Restoration	<a href="#">View WB Page</a>	<a href="#">View WB on EPA Water Map</a>
22	IE_SW_22B410750	BALLINLEAGUE_010	River	Kerry County Council		Unassigned	Unassigned	Moderate	Good	2022-2027	Review					<a href="#">View WB Page</a>	<a href="#">View WB on EPA Water Map</a>
22	IE_SW_22C020200	CARAGH_010	River	Kerry County Council	SAC;	Poor	Poor	Poor	High	2022-2027	At risk	Hydrological, Morphological, Nutrients	HYMO, Ag	Upper Caragh	LAWPRO, Restoration	<a href="#">View WB Page</a>	<a href="#">View WB on EPA Water Map</a>
22	IE_SW_22C020400	CARAGH_020	River	Kerry County Council	SAC;	Good	Good	Good	High	2022-2027	At risk	Hydrological, Morphological, Nutrients	HYMO, Ag	Upper Caragh	LAWPRO, Restoration	<a href="#">View WB Page</a>	<a href="#">View WB on EPA Water Map</a>
22	IE_SW_22C020600	CARAGH_030	River	Kerry County Council	SAC;	High	Poor	Poor	High	2022-2027	At risk	Morphological, OtherSignificantImpacts	Unknown, HYMO			<a href="#">View WB Page</a>	<a href="#">View WB on EPA Water Map</a>
22	IE_SW_22C020680	CARAGH_040	River	Kerry County Council	SAC;	Moderate	Moderate	Moderate	High	2022-2027	At risk	Hydrological, Morphological	HYMO			<a href="#">View WB Page</a>	<a href="#">View WB on EPA Water Map</a>
22	IE_SW_22C020700	CARAGH_050	River	Kerry County Council	SAC; SPA;	Unassigned	Unassigned	Good	Good	2021 or earlier	Not at risk					<a href="#">View WB Page</a>	<a href="#">View WB on EPA Water Map</a>

22	IE_SW_22C030200	CARHAN_010	River	Kerry County Council		Good	Good	Good	Good	2021 or earlier	Not at risk			Valencia Harbour	LAWPRO, Restoration	<a href="#">View WB Page</a>	<a href="#">View WB on EPA Water Map</a>
22	IE_SW_22C030300	CARHAN_020	River	Kerry County Council		Unassigned	Good	Moderate	Good	2022-2027	Review			Valencia Harbour	LAWPRO, Restoration	<a href="#">View WB Page</a>	<a href="#">View WB on EPA Water Map</a>
22	IE_SW_22C050400	COTTONER'S (LAUNE)_010	River	Kerry County Council	DWPA; SAC;	Good	Good	Good	Good	2021 or earlier	Not at risk					<a href="#">View WB Page</a>	<a href="#">View WB on EPA Water Map</a>
22	IE_SW_22C050600	COTTONER'S (LAUNE)_020	River	Kerry County Council	SAC;	Poor	Moderate	Moderate	Good	2022-2027	At risk	Morphological, Nutrients	Ag, M+Q			<a href="#">View WB Page</a>	<a href="#">View WB on EPA Water Map</a>
22	IE_SW_22C060300	COOMNACARRIG_010	River	Kerry County Council	SAC;	Good	Good	High	High	2021 or earlier	Not at risk					<a href="#">View WB Page</a>	<a href="#">View WB on EPA Water Map</a>
22	IE_SW_22C070200	CRINNAGH_010	River	Kerry County Council	SAC; SPA;	High	High	High	High	2021 or earlier	Not at risk					<a href="#">View WB Page</a>	<a href="#">View WB on EPA Water Map</a>
22	IE_SW_22C180300	COOMNACRONIA LOUGH STREAM_010	River	Kerry County Council	DWPA; SAC;	Good	Good	High	Good	2021 or earlier	Not at risk					<a href="#">View WB Page</a>	<a href="#">View WB on EPA Water Map</a>
22	IE_SW_22C200100	CAHERLEHILLAN STREAM_010	River	Kerry County Council	DWPA; SAC;	Good	Good	Good	High	2022-2027	At risk	UnknownImpactType	Unknown	Valencia Harbour	LAWPRO, Restoration	<a href="#">View WB Page</a>	<a href="#">View WB on EPA Water Map</a>
22	IE_SW_22C910960	CAHERPIERCE_010	River	Kerry County Council	SAC; SPA;	Unassigned	Good	Good	Good	2021 or earlier	Not at risk					<a href="#">View WB Page</a>	<a href="#">View WB on EPA Water Map</a>
22	IE_SW_22D010100	DEENAGH_010	River	Kerry County Council	SAC;	Poor	Poor	Moderate	Good	2022-2027	At risk	Sediment, Hydrological, Morphological, MicrobiologicalPollution, Nutrients	Ag, HYMO, Peat	Deenagh	LAWPRO, Restoration	<a href="#">View WB Page</a>	<a href="#">View WB on EPA Water Map</a>
22	IE_SW_22D010500	DEENAGH_020	River	Kerry County Council	SAC; SPA;	High	Good	Good	High	2022-2027	At risk	Sediment, Nutrients	Ag	Deenagh	LAWPRO, Restoration	<a href="#">View WB Page</a>	<a href="#">View WB on EPA Water Map</a>
22	IE_SW_22D020100	DERREEN (KERRY)_010	River	Kerry County Council	SAC;	Good	Good	Good	Good	2021 or earlier	Not at risk					<a href="#">View WB Page</a>	<a href="#">View WB on EPA Water Map</a>
22	IE_SW_22D030400	DOGUE_010	River	Kerry County Council		Good	Good	Good	Good	2021 or earlier	Not at risk					<a href="#">View WB Page</a>	<a href="#">View WB on EPA Water Map</a>
22	IE_SW_22D250950	DOUGLAS_010	River	Kerry County Council	SAC; SPA;	Unassigned	Good	Moderate	Good	2022-2027	Review					<a href="#">View WB Page</a>	<a href="#">View WB on EPA Water Map</a>
22	IE_SW_22E010400	EMLAGH_010	River	Kerry County Council	SAC; SPA;	High	Good	Good	High	2022-2027	At risk	Sediment, Organic	Ind, Ag	Lougher	NFGWS, Restoration	<a href="#">View WB Page</a>	<a href="#">View WB on EPA Water Map</a>
22	IE_SW_22F011000	FERTA_010	River	Kerry County Council	SAC;	Moderate	Moderate	Moderate	Good	2022-2027	At risk	Morphological, Nutrients	Ag, M+Q	Valencia Harbour	LAWPRO, Restoration	<a href="#">View WB Page</a>	<a href="#">View WB on EPA Water Map</a>
22	IE_SW_22F020010	FLESK (KERRY)_010	River	Cork County Council	SAC;	Good	Good	Good	Good	2021 or earlier	Not at risk					<a href="#">View WB Page</a>	<a href="#">View WB on EPA Water Map</a>
22	IE_SW_22F020040	FLESK (KERRY)_020	River	Kerry County Council	SAC;	High	Good	Good	High	2022-2027	At risk	Morphological	HYMO			<a href="#">View WB Page</a>	<a href="#">View WB on EPA Water Map</a>
22	IE_SW_22F020060	FLESK (KERRY)_030	River	Kerry County Council	SAC;	High	High	High	High	2021 or earlier	Not at risk					<a href="#">View WB Page</a>	<a href="#">View WB on EPA Water Map</a>
22	IE_SW_22F020100	FLESK (KERRY)_040	River	Kerry County Council	DWPA; SAC;	High	Good	Good	High	2022-2027	At risk	Morphological	HYMO			<a href="#">View WB Page</a>	<a href="#">View WB on EPA Water Map</a>
22	IE_SW_22F020250	FLESK (KERRY)_050	River	Kerry County Council	SAC;	High	Good	High	High	2021 or earlier	Review					<a href="#">View WB Page</a>	<a href="#">View WB on EPA Water Map</a>
22	IE_SW_22F020310	FLESK (KERRY)_060	River	Kerry County Council	SAC;	Good	Good	Good	Good	2021 or earlier	Not at risk					<a href="#">View WB Page</a>	<a href="#">View WB on EPA Water Map</a>
22	IE_SW_22F030700	FINGLAS (LAUNE)_010	River	Kerry County Council	SAC;	Good	Good	Good	Good	2021 or earlier	Not at risk					<a href="#">View WB Page</a>	<a href="#">View WB on EPA Water Map</a>
22	IE_SW_22F040100	FINOW_010	River	Kerry County Council	SAC;	High	Good	Good	High	2022-2027	At risk	Chemical	Ag	Finow	LAWPRO, Restoration	<a href="#">View WB Page</a>	<a href="#">View WB on EPA Water Map</a>
22	IE_SW_22F040300	FINOW_020	River	Kerry County Council	SAC; SPA;	Moderate	Moderate	Moderate	Good	2022-2027	At risk	Hydrological, UnknownImpactType	Ab, Unknown	Finow	LAWPRO, Restoration	<a href="#">View WB Page</a>	<a href="#">View WB on EPA Water Map</a>
22	IE_SW_22F050700	FOUGHILL_010	River	Kerry County Council	SAC; SPA;	Unassigned	Good	Good	Good	2021 or earlier	Not at risk			Valencia Harbour	LAWPRO, Restoration	<a href="#">View WB Page</a>	<a href="#">View WB on EPA Water Map</a>
22	IE_SW_22F090400	FAHADUFF_010	River	Kerry County Council		Moderate	Poor	Moderate	Good	2022-2027	At risk	Chemical, Nutrients	Ag, Other	Fahaduff and Upper Maine	LAWPRO, Restoration	<a href="#">View WB Page</a>	<a href="#">View WB on EPA Water Map</a>
22	IE_SW_22F240620	FEAGHMAAN_WEST_010	River	Kerry County Council	SAC; SPA;	Unassigned	Good	Good	Good	2021 or earlier	Review			Valencia Harbour	LAWPRO, Restoration	<a href="#">View WB Page</a>	<a href="#">View WB on EPA Water Map</a>
22	IE_SW_22F270920	FAHA (Kerry)_010	River	Kerry County Council	DWPA; SAC; SPA;	Unassigned	Good	Good	Good	2021 or earlier	Review					<a href="#">View WB Page</a>	<a href="#">View WB on EPA Water Map</a>
22	IE_SW_22G010300	GADDAGH_010	River	Kerry County Council	SAC;	High	Good	Good	High	2022-2027	At risk	Nutrients	Other, Ag			<a href="#">View WB Page</a>	<a href="#">View WB on EPA Water Map</a>
22	IE_SW_22G010500	GADDAGH_020	River	Kerry County Council	DWPA; SAC;	Good	High	Good	Good	2021 or earlier	Not at risk					<a href="#">View WB Page</a>	<a href="#">View WB on EPA Water Map</a>
22	IE_SW_22G030100	GEARHAMEEN_010	River	Kerry County Council	SAC;	High	High	High	High	2021 or earlier	Not at risk					<a href="#">View WB Page</a>	<a href="#">View WB on EPA Water Map</a>
22	IE_SW_22G030300	GEARHAMEEN_020	River	Kerry County Council	SAC;	High	High	Moderate	High	2022-2027	At risk	Chemical	Ag			<a href="#">View WB Page</a>	<a href="#">View WB on EPA Water Map</a>
22	IE_SW_22G040110	Glanoraigh_010	River	Kerry County Council		Unassigned	Good	Good	Good	2021 or earlier	Review					<a href="#">View WB Page</a>	<a href="#">View WB on EPA Water Map</a>
22	IE_SW_22G060300	GWEESTIN_010	River	Kerry County Council	SAC;	Good	Good	Good	Good	2021 or earlier	Not at risk			Gweestin	LAWPRO, Restoration	<a href="#">View WB Page</a>	<a href="#">View WB on EPA Water Map</a>
22	IE_SW_22G060600	GWEESTIN_020	River	Kerry County Council	SAC;	High	Good	Good	Good	2021 or earlier	Not at risk			Gweestin	LAWPRO, Restoration	<a href="#">View WB Page</a>	<a href="#">View WB on EPA Water Map</a>
22	IE_SW_22G060900	GWEESTIN_030	River	Kerry County Council	SAC;	Good	Good	Good	Good	2021 or earlier	Not at risk			Gweestin	LAWPRO, Restoration	<a href="#">View WB Page</a>	<a href="#">View WB on EPA Water Map</a>
22	IE_SW_22G061200	GWEESTIN_040	River	Kerry County Council	SAC;	Poor	Poor	Moderate	Good	2022-2027	At risk	Nutrients, Organic	Ag, Ind	Gweestin	LAWPRO, Restoration	<a href="#">View WB Page</a>	<a href="#">View WB on EPA Water Map</a>
22	IE_SW_22G070200	GLANTANE_010	River	Kerry County Council		Poor	Poor	Moderate	Good	2022-2027	At risk	Morphological	For			<a href="#">View WB Page</a>	<a href="#">View WB on EPA Water Map</a>
22	IE_SW_22G080300	GROIN_010	River	Kerry County Council	SAC;	High	Good	Good	High	2022-2027	At risk	Sediment	Ag			<a href="#">View WB Page</a>	<a href="#">View WB on EPA Water Map</a>
22	IE_SW_22G130680	GORTNANOORAN_EAST_010	River	Kerry County Council	SAC; SPA;	Unassigned	Good	Good	Good	2021 or earlier	Not at risk					<a href="#">View WB Page</a>	<a href="#">View WB on EPA Water Map</a>

22	IE_SW_22G700680	GLANLICK_010	River	Kerry County Council	SAC; SPA;	Unassigned	Good	Good	Good	2021 or earlier	Review					<a href="#">View WB Page</a>	<a href="#">View WB on EPA Water Map</a>
22	IE_SW_22K040500	KEALBROGEEEN STREAM (LAUNE)_010	River	Kerry County Council	SAC;	Unassigned	Good	Moderate	Good	2022-2027	Review					<a href="#">View WB Page</a>	<a href="#">View WB on EPA Water Map</a>
22	IE_SW_22K480900	KNOCKEENAWADDRA_010	River	Kerry County Council	DWPA; SAC;	Unassigned	Good	Moderate	Good	2022-2027	Review					<a href="#">View WB Page</a>	<a href="#">View WB on EPA Water Map</a>
22	IE_SW_22K540860	KILLURLY_WEST_010	River	Kerry County Council	SAC; SPA;	Unassigned	High	Good	Good	2021 or earlier	Not at risk					<a href="#">View WB Page</a>	<a href="#">View WB on EPA Water Map</a>
22	IE_SW_22L010100	LAUNE_010	River	Kerry County Council	SAC; SPA; NSA;	Unassigned	Unassigned	Poor	Good	2022-2027	At risk	UnknownImpactType	Unknown	Ross Bay	LAWPRO, Restoration	<a href="#">View WB Page</a>	<a href="#">View WB on EPA Water Map</a>
22	IE_SW_22L010200	LAUNE_020	River	Kerry County Council	SAC;	Good	Good	Good	Good	2021 or earlier	Not at risk					<a href="#">View WB Page</a>	<a href="#">View WB on EPA Water Map</a>
22	IE_SW_22L010300	LAUNE_030	River	Kerry County Council	SAC;	Good	Good	Good	Good	2021 or earlier	Not at risk					<a href="#">View WB Page</a>	<a href="#">View WB on EPA Water Map</a>
22	IE_SW_22L010400	LAUNE_040	River	Kerry County Council	SAC;	Good	Good	Good	Good	2021 or earlier	Not at risk					<a href="#">View WB Page</a>	<a href="#">View WB on EPA Water Map</a>
22	IE_SW_22L010510	LAUNE_050	River	Kerry County Council	SAC;	Unassigned	Good	Good	Good	2021 or earlier	Not at risk					<a href="#">View WB Page</a>	<a href="#">View WB on EPA Water Map</a>
22	IE_SW_22L020500	LITTLE MAINE_010	River	Kerry County Council		High	Moderate	Good	High	2022-2027	At risk	Sediment	Other, Ag			<a href="#">View WB Page</a>	<a href="#">View WB on EPA Water Map</a>
22	IE_SW_22L021000	LITTLE MAINE_020	River	Kerry County Council		Good	Poor	Poor	Good	2022-2027	At risk	Sediment, Nutrients	Ag			<a href="#">View WB Page</a>	<a href="#">View WB on EPA Water Map</a>
22	IE_SW_22L030400	LOE_010	River	Kerry County Council	SAC;	High	Moderate	Poor	High	2022-2027	At risk	Nutrients	UR, DWTS	Ross Bay	LAWPRO, Restoration	<a href="#">View WB Page</a>	<a href="#">View WB on EPA Water Map</a>
22	IE_SW_22L040400	LOO_010	River	Kerry County Council	SAC;	Good	Good	Good	Good	2021 or earlier	Not at risk					<a href="#">View WB Page</a>	<a href="#">View WB on EPA Water Map</a>
22	IE_SW_22L080100	LONG RANGE_010	River	Kerry County Council	SAC; SPA;	Unassigned	Good	High	Good	2021 or earlier	Not at risk					<a href="#">View WB Page</a>	<a href="#">View WB on EPA Water Map</a>
22	IE_SW_22M010300	MAINE_010	River	Kerry County Council		Good	Good	Moderate	Good	2022-2027	At risk	Hydrological, Morphological	HYMO	Fahaduff and Upper Maine	LAWPRO, Restoration	<a href="#">View WB Page</a>	<a href="#">View WB on EPA Water Map</a>
22	IE_SW_22M010400	MAINE_020	River	Kerry County Council		Moderate	Moderate	Good	Good	2021 or earlier	Review			Fahaduff and Upper Maine	LAWPRO, Restoration	<a href="#">View WB Page</a>	<a href="#">View WB on EPA Water Map</a>
22	IE_SW_22M010500	MAINE_030	River	Kerry County Council		Good	Poor	Good	Good	2021 or earlier	Not at risk					<a href="#">View WB Page</a>	<a href="#">View WB on EPA Water Map</a>
22	IE_SW_22M010700	MAINE_040	River	Kerry County Council	Fish;	Moderate	Moderate	Good	Good	2021 or earlier	Not at risk					<a href="#">View WB Page</a>	<a href="#">View WB on EPA Water Map</a>
22	IE_SW_22M010800	MAINE_050	River	Kerry County Council	SAC; Fish; SPA;	Unassigned	Unassigned	Moderate	Good	2022-2027	Review					<a href="#">View WB Page</a>	<a href="#">View WB on EPA Water Map</a>
22	IE_SW_22M020100	MEELAGH_010	River	Kerry County Council	SAC;	Good	Good	Good	High	2022-2027	At risk	Morphological	For			<a href="#">View WB Page</a>	<a href="#">View WB on EPA Water Map</a>
22	IE_SW_22M030200	MILLTOWN (KERRY)_010	River	Kerry County Council	SAC;	Poor	Moderate	Moderate	Good	2022-2027	At risk	Morphological, Nutrients, UnknownImpactType	UR, For, HYMO, Ag	Milltown	LAWPRO, Restoration	<a href="#">View WB Page</a>	<a href="#">View WB on EPA Water Map</a>
22	IE_SW_22M030300	MILLTOWN (KERRY)_020	River	Kerry County Council	SAC;	Poor	Poor	Poor	Good	2022-2027	At risk	Morphological, Nutrients	Ag, For, HYMO	Milltown	LAWPRO, Restoration	<a href="#">View WB Page</a>	<a href="#">View WB on EPA Water Map</a>
22	IE_SW_22M030400	MILLTOWN (KERRY)_030	River	Kerry County Council	SAC;	Unassigned	Unassigned	Moderate	Good	2022-2027	Review					<a href="#">View WB Page</a>	<a href="#">View WB on EPA Water Map</a>
22	IE_SW_22M120990	MÁM AN GHARRÁIN_010	River	Kerry County Council	SAC; SPA;	Unassigned	Good	Good	Good	2021 or earlier	Review					<a href="#">View WB Page</a>	<a href="#">View WB on EPA Water Map</a>
22	IE_SW_22O010500	OWENALONDRIG_010	River	Kerry County Council	DWPA; SAC;	Good	Good	Good	Good	2021 or earlier	Not at risk					<a href="#">View WB Page</a>	<a href="#">View WB on EPA Water Map</a>
22	IE_SW_22O010600	OWENALONDRIG_020	River	Kerry County Council	DWPA; SAC; SPA;	Unassigned	Good	Good	Good	2021 or earlier	Review					<a href="#">View WB Page</a>	<a href="#">View WB on EPA Water Map</a>
22	IE_SW_22O021000	OWENASCAUL_010	River	Kerry County Council	SAC; SPA;	High	High	Good	High	2022-2027	Review					<a href="#">View WB Page</a>	<a href="#">View WB on EPA Water Map</a>
22	IE_SW_22O030200	OWENREAGH_010	River	Kerry County Council	SAC;	High	High	High	High	2021 or earlier	Not at risk					<a href="#">View WB Page</a>	<a href="#">View WB on EPA Water Map</a>
22	IE_SW_22O030400	OWENREAGH_020	River	Kerry County Council	SAC; SPA;	Good	Good	Good	Good	2021 or earlier	Not at risk					<a href="#">View WB Page</a>	<a href="#">View WB on EPA Water Map</a>
22	IE_SW_22O040200	OWENROE (CARAGH)_010	River	Kerry County Council	SAC;	Good	Good	Good	High	2022-2027	At risk	Hydrological, Morphological, Nutrients	Ag, HYMO	Upper Caragh	LAWPRO, Restoration	<a href="#">View WB Page</a>	<a href="#">View WB on EPA Water Map</a>
22	IE_SW_22O050400	OWNEYKEAGH_010	River	Kerry County Council	DWPA; SAC;	High	Good	Good	High	2022-2027	At risk	Sediment	HYMO, Ag			<a href="#">View WB Page</a>	<a href="#">View WB on EPA Water Map</a>
22	IE_SW_22O060100	OWGARRIFF (FINOW)_010	River	Kerry County Council	DWPA; SAC;	High	Good	Good	High	2022-2027	At risk	Morphological	HYMO	Finow	LAWPRO, Restoration	<a href="#">View WB Page</a>	<a href="#">View WB on EPA Water Map</a>
22	IE_SW_22Q010400	QUAGMIRE_010	River	Kerry County Council	SAC;	Good	Good	Good	Good	2021 or earlier	Not at risk					<a href="#">View WB Page</a>	<a href="#">View WB on EPA Water Map</a>
22	IE_SW_22R120790	REACASHLAGH_010	River	Kerry County Council	SAC; SPA;	Unassigned	Unassigned	Good	Good	2021 or earlier	Not at risk					<a href="#">View WB Page</a>	<a href="#">View WB on EPA Water Map</a>
22	IE_SW_22S010020	SHANOWEN (MAINE)_010	River	Kerry County Council		Good	Good	Good	Good	2021 or earlier	Not at risk			Fahaduff and Upper Maine	LAWPRO, Restoration	<a href="#">View WB Page</a>	<a href="#">View WB on EPA Water Map</a>
22	IE_SW_22S130900	SHANAKEAL_010	River	Kerry County Council	DWPA; SAC; SPA;	Unassigned	High	Good	Good	2021 or earlier	Review					<a href="#">View WB Page</a>	<a href="#">View WB on EPA Water Map</a>
22	IE_SW_22T040500	TEERMOYLE STREAM_010	River	Kerry County Council	SAC;	Good	Good	Good	High	2022-2027	At risk	Morphological	For, Peat	Valencia Harbour	LAWPRO, Restoration	<a href="#">View WB Page</a>	<a href="#">View WB on EPA Water Map</a>
22	IE_SW_22W010300	WOODFORD (FLESK)_010	River	Kerry County Council	SAC;	Unassigned	Good	Good	Good	2021 or earlier	Review					<a href="#">View WB Page</a>	<a href="#">View WB on EPA Water Map</a>
22	IE_SW_220_0100	Ferta	Transitional	Kerry County Council	SPA; SF;	Good	Good	Good	High	2022-2027	At risk	Organic	DWTS, Ag	Valencia Harbour	LAWPRO, Restoration	<a href="#">View WB Page</a>	<a href="#">View WB on EPA Water Map</a>
22	IE_SW_230_0200	Castlemaine Harbour	Transitional	Kerry County Council	SAC; Fish; SPA; SF;	Good	Good	Poor	Good	2022-2027	At risk	Nutrients	Ag			<a href="#">View WB Page</a>	<a href="#">View WB on EPA Water Map</a>