



Cycle 3

HA 20 Bandon Ilen Catchment Report, May 2024

Introduction

Water Quality
Summary

High Status
Objectives

Water Quality
Changes

WFD Risk

Significant
Pressures

Action

Summary
Information

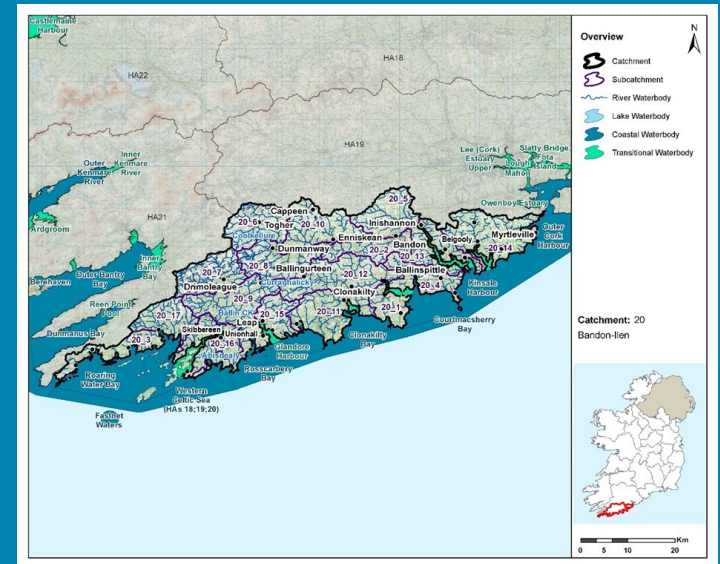
Introduction

This report provides an overview of the water quality in the Bandon Ilen Catchment and the pressures impacting on water quality. This report is based on data up to 2021. The latest water quality data, dashboards and maps throughout this report are available on catchments.ie and [EPA Water Map](https://www.epa.ie/maps/).

The Bandon Ilen Catchment includes the area drained by the rivers Bandon and Ilen, and all streams entering tidal water between Templebreedy Battery and Mizen Head, Co. Cork, draining a total area of 1,803km². The largest urban centre in the catchment is Bandon. The other main urban centres in this catchment are Kinsale, Clonakilty, Skibbereen and Dunmanway.

The Bandon Ilen catchment is divided into 17 subcatchments with 87 river waterbodies, six lakes, 11 transitional, 15 coastal waterbodies and nine groundwater bodies.

[View the Bandon Ilen Catchment on the EPA Water Map](https://www.epa.ie/maps/)



Overview of Subcatchments in the Bandon Ilen Catchment

Previous Catchment Assessments

Previous catchment assessments, which provide additional historic context and information, are archived on catchments.ie:

- [Cycle 2 Catchment Assessments – published September 2018](#)
- [Cycle 3 Draft Catchment Assessments – published September 2021](#)

Online Dashboards

Links to online dashboards are provided in this report – these numbers may vary from those in this document as time progress and the online dashboards are updated based on the latest data and scientific assessments.

Water Quality Summary

Introduction

Water Quality Summary

High Status Objectives

Water Quality Changes

WFD Risk

Significant Pressures

Action

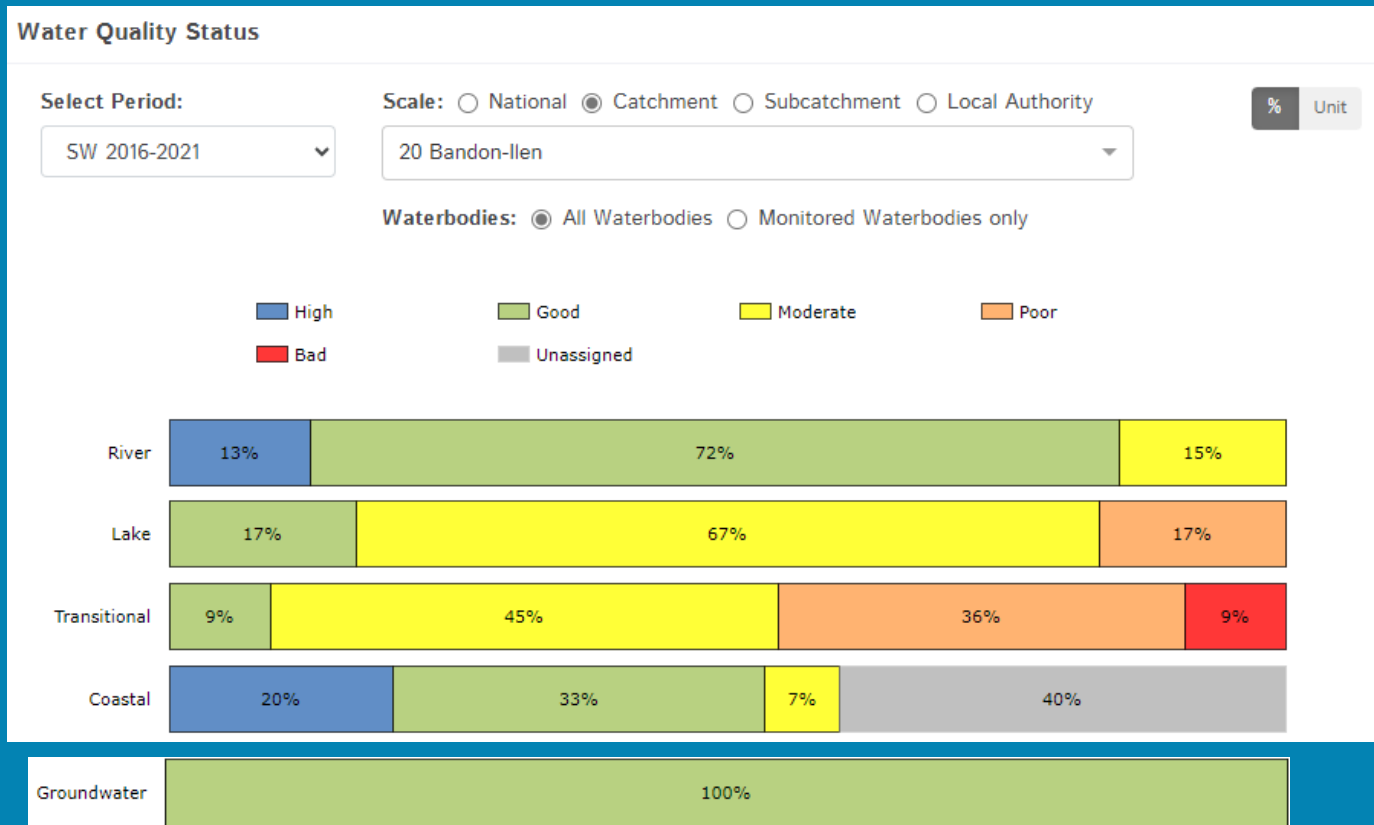
Summary Information

The dashboard below provides a breakdown of water quality status for surface and groundwater bodies in the Bandon Ilen Catchment.

A total of 71% of surface waterbodies were at Good or High Ecological Status in the 2016-2021 monitoring period. One hundred percent of groundwater bodies were at Good status.

Go to EPA Water Maps for WFD Status

[EPA Water Map](#)



Water quality status 2016-2021 for the Bandon Ilen Catchment.
View Online Dashboard: <https://www.catchments.ie/data/#/dashboard/waterquality>

High Status Objective Waterbodies

High status waters are prioritised for protection and action.

There are 12 waterbodies with a **High Ecological Status Objective (HSO)** in the Bandon Ilen Catchment, with three currently not meeting their environmental objective of High.

Grants for septic tank upgrades may be available in high status objective catchment areas - you can learn more and check your Eircode for eligibility here: <https://www.gov.ie/en/publication/6cc1e-domestic-waste-water-treatment-systems-septic-tanks>

[View HSO river waterbodies in this catchment.](#)

See Status and Risk / High Status Objective for other waterbody types.

Introduction

Water Quality Summary

High Status Objectives

Water Quality Changes

WFD Risk

Significant Pressures

Action

Summary Information

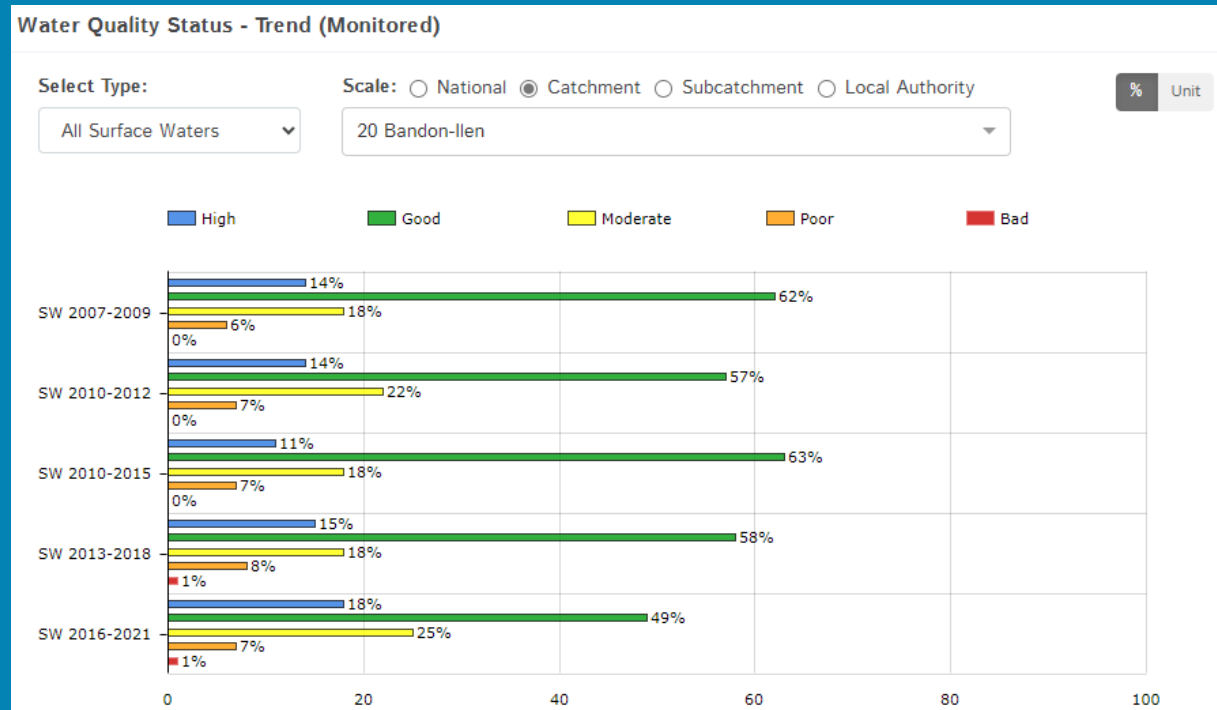
	SW 2007-2009	SW 2010-2012	SW 2010-2015	SW 2013-2018	SW 2016-2021
BALLYMAHANE_010 (River)	High	High	Good	Good	Good
BLACKWATER (BANDON)_030 (River)	High	Good	Good	Good	Good
BRINNY_020 (River)	High	High	High	High	High
CAHA_010 (River)	Good	High	High	High	High
CAHA_020 (River)	High	High	Good	Good	Good
GLASHAGLORAGH (CORK)_010 (River)	High	High	High	High	High
ILEN_030 (River)	Good	High	High	High	High
LEAMAWADDRA_010 (River)	Unassigned	Unassigned	High	Good	High
LEAMAWADDRA_020 (River)	High	High	High	High	High
OWENNASHINGAUN_010 (River)	High	High	Good	High	High
OWENNASHINGAUN_020 (River)	High	High	High	High	High
RATHRUANE_010 (River)	Good	Good	High	High	High

Water quality status for High Ecological Status Objective waterbodies.

View Online Dashboard: <https://www.catchments.ie/data/#/dashboard/waterquality>

Water Quality Changes

Below illustrates the changes in ecological status in monitored surface waterbodies over the last five monitoring cycles in the Bandon Ilen Catchment. Nationally while there have been improvements in some waterbodies, these have been offset by declines elsewhere.



Ecological status trends for monitored surface waterbodies over the last five monitoring cycles in the Bandon Ilen Catchment.

View online dashboard: <https://www.catchments.ie/data/#/dashboard/waterquality>

A total of 90 (70%) waterbodies are currently meeting their environmental objective of Good or High Ecological Status.

	Total	Achieving Environmental Objectives (2016-2021)	High Status Environmental Objectives Waterbodies	Achieving High Status Environmental Objectives (2016-2021)
Rivers	87	71 (82%)	12	9 (75%)
Canals	-	-	-	-
Lakes	6	1 (17%)	0	0 (0%)
Transitional	11	1 (9%)	0	0 (0%)
Coastal	15	8 (53%)	0	0 (0%)
Groundwater	9	9 (100%)	0	0 (0%)

Introduction

Water Quality Summary

High Status Objectives

Water Quality Changes

WFD Risk

Significant Pressures

Action

Summary Information

WFD Risk

Introduction

Water Quality Summary

High Status Objectives

Water Quality Changes

WFD Risk

Significant Pressures

Action

Summary Information

A total of 28 (22%) waterbodies are *At Risk* of not meeting their environmental objective in the Bandon Ilen Catchment, while 33 (26%) are under *Review* and 67 (52%) are *Not At Risk*.

Go to [EPA Water Map](#) to see WFD Risk for this catchment



WFD Risk for the Bandon Ilen Catchment based on 2016-2021 data.

View Online Dashboard: <https://www.catchments.ie/data/#/dashboard/waterquality>

There are currently no heavily modified water bodies (HMWBs) in the Bandon Ilen Catchment.

There are no artificial waterbodies in the Bandon Ilen Catchment.

The [EPA's characterisation outcome report](#) has more information on WFD Risk

Introduction

Water Quality
Summary

High Status
Objectives

Water Quality
Changes

WFD Risk

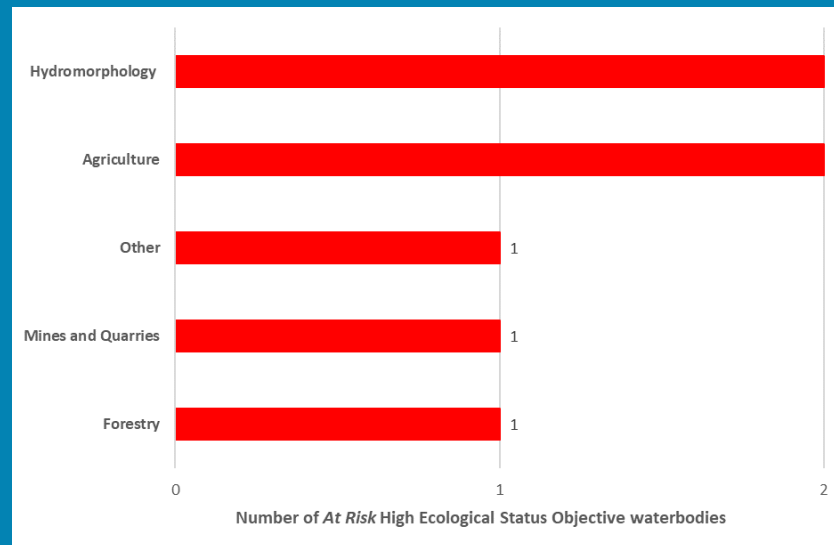
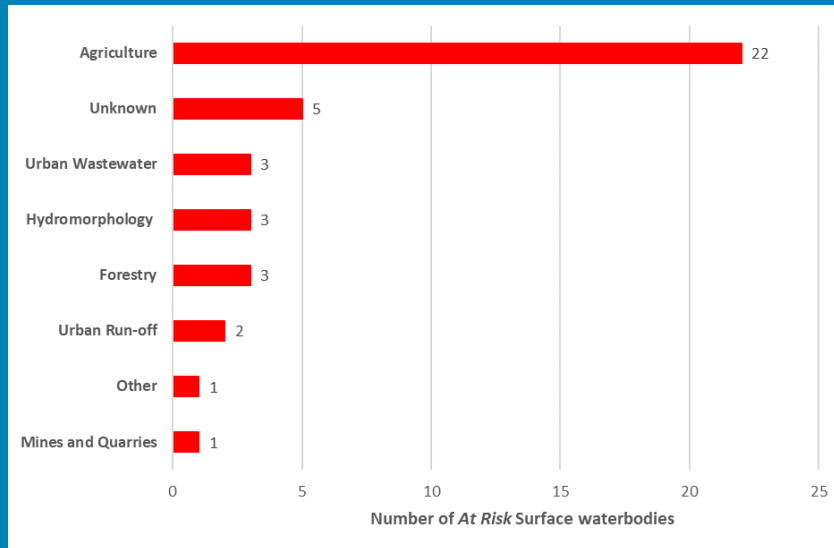
Significant
Pressures

Action

Summary
Information

Significant Pressures driving risk

Significant pressure types impacting the 28 *At Risk* surface waterbodies are broken down in the figures below, including significant pressure information for the three *At Risk* High Ecological Status Objective waterbodies.



The issues driven by these pressures are mainly nutrient pollution, organic pollution and sediment impacts. For more information, see <https://www.catchments.ie/data/#/dashboard/pressure?k=i351zs>.

Go to the Summary Information section to get significant pressure and issue data for At Risk waterbodies within the Bandon Ilen Catchment.

Click [here](#) for more information on significant pressures

Introduction

Water Quality
Summary

High Status
Objectives

Water Quality
Changes

WFD Risk

Significant
Pressures

Action

Summary
Information

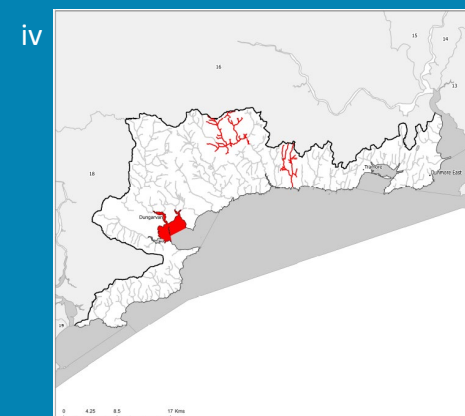
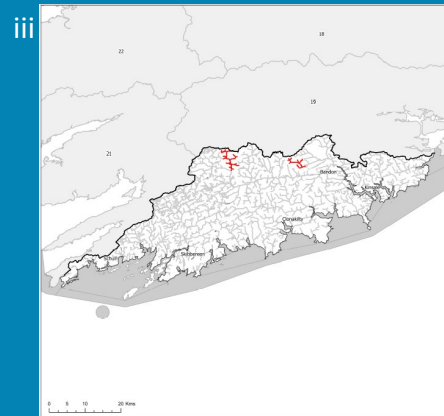
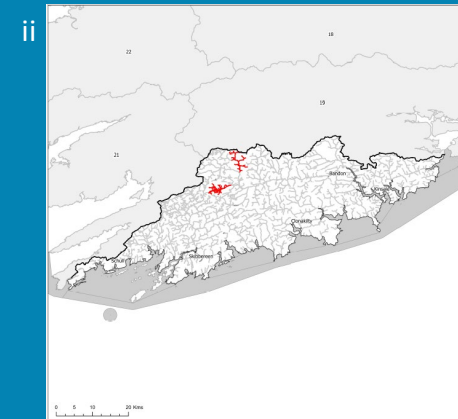
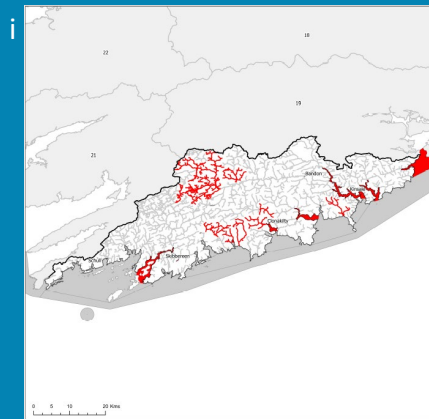
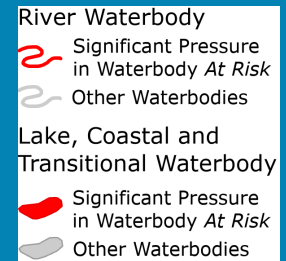
Significant Pressures

Agriculture is the top significant pressure impacting 79% of the 28 *At Risk* waterbodies within the Bandon Ilen Catchment, followed by 11% impacted by forestry, hydromorphological pressures and urban wastewater.

The catchments.ie dashboards will show all significant pressures identified for this catchment.

www.catchments.ie/data/#/dashboard/pressure

Go to the [EPA Water Maps](#) for the locations of all significant pressure types identified for this catchment



Locations of At Risk surface waterbodies impacted by i) Agriculture, ii) Forestry, iii) Hydromorphological Pressures and iv) Urban Wastewater.

Introduction

Water Quality
Summary

High Status
Objectives

Water Quality
Changes

WFD Risk

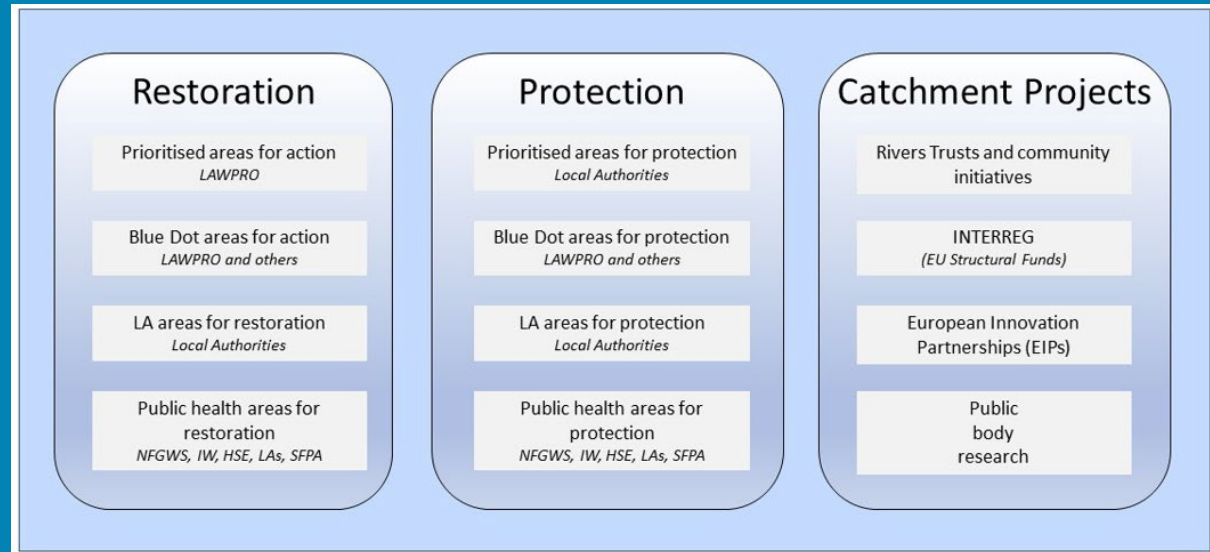
Significant
Pressures

Action

Summary
Information

Priority Areas for Action

A number of waterbodies have been prioritised through the selection of Areas for Action. There were five Priority Areas for Action identified for the second river basin management planning cycle in the Bandon Ilen Catchment. This has increased to a total of 12 Areas for Restoration, one Area for Protection and one Catchment Project for the third cycle. ***Go to the summary information section to get Area for Action information for waterbodies within the Bandon Ilen Catchment.***



Types of Areas for Action under the third cycle River Basin Management Plan

- View the current progress of Areas for Action and Summary Reports completed by LAWPRO, on catchments.ie and the EPA Water Map:
 - <https://www.catchments.ie/data/#/areaforaction>
- LAWPRO have also published detailed desktop studies on Prioritised Areas for Action (PAAs) which are available their website: <https://lawaters.ie/desktop-studies/>
- Information on Areas for Action for the second cycle is available in Cycle 2 Catchment Assessments which have been archived on catchments.ie:
<https://www.catchments.ie/download/cycle-2-catchment-assessments-published-september-2018/>

Introduction

Water Quality
Summary

High Status
Objectives

Water Quality
Changes

WFD Risk

Significant
Pressures

Action

Summary
Information

Summary information for all waterbodies in the Bandon Ilen Catchment

The next page provides a table with a breakdown of key information for all waterbodies in this catchment. The key is provided below. Additional information for each waterbody is available on <https://www.catchments.ie/data>, including a breakdown of status, a monitoring schedule for monitored waterbodies and downloadable chemistry results, where available.

Protected Area categories	BW: Bathing Water DW: Drinking Water Fish: Salmonid Waters NSA: Nutrient Sensitive Areas SAC: Special Area of Conservation, Natura 2000 (water dependent habitats and species) SF: Shellfish Area SPA: Special Area of Protection, Natura 2000 (water dependent habitat and species)
Significant pressure* types categories <i>* For At Risk waterbodies only</i>	Ab: Abstractions Ag: Agriculture Aq: Aquaculture At: Atmospheric DWW: Domestic Wastewater For: Forestry HPS: Historically polluted sites HYMO: Hydromorphology Ind: Industry IS: Invasive Species M+Q: Mines and Quarries Peat: Peat Drainage and Extraction UR: Urban Run-Off UWW: Urban Wastewater Was: Waste WT: Water Treatment

Catchment Code	Waterbody (WB) Code	WB Name	WB Type	Local Authority	Protected Area	Status 10-15	Status 13-18	Status 16-21	Environmental Objective	Environmental Objective Date	WFD Risk 16-21	Significant Issue(s)	Significant Pressure(s)	Area for Action (AFA)	AFA (lead, type)	Link to WB page on catchments.ie	Link to WB on EPA Water Map
17, 19, 20	IE_SW_010_0000	Western Celtic Sea (HAs 18;19;20)	Coastal	Cork County Council	BW; SAC; SPA;	Unassigned	High	High	Good	2021 or earlier	Not at risk					View WB Page	View WB on EPA Water Map
20	IE_SW_010_0100	Lough Hyne	Coastal	Cork County Council	SAC;	Unassigned	High	High	Good	2021 or earlier	Review					View WB Page	View WB on EPA Water Map
19, 20	IE_SW_050_0000	Outer Cork Harbour	Coastal	Cork County Council	BW; SPA;	Good	Good	Moderate	Good	2022-2027	At risk	Nutrients	Ag			View WB Page	View WB on EPA Water Map
20	IE_SW_080_0000	Kinsale Harbour	Coastal	Cork County Council	NSA;	Good	Good	Good	Good	2021 or earlier	Not at risk					View WB Page	View WB on EPA Water Map
20	IE_SW_080_0200	Kinsale Marsh, Commoge	Coastal	Cork County Council		Unassigned	Unassigned	Unassigned	Good	Unknown	Review					View WB Page	View WB on EPA Water Map
20	IE_SW_090_0000	Courtmacsherry Bay	Coastal	Cork County Council	BW; SAC; SPA;	Poor	Good	Good	Good	2021 or earlier	Review					View WB Page	View WB on EPA Water Map
20	IE_SW_100_0000	Clonakilty Bay	Coastal	Cork County Council	BW; SAC; SPA; NSA;	Moderate	Good	Good	Good	2021 or earlier	Review			Clonakilty	LAWPRO, Restoration	View WB Page	View WB on EPA Water Map
20	IE_SW_100_0200	Inchydoney	Coastal	Cork County Council	SAC; SPA;	Unassigned	Unassigned	Unassigned	Good	Unknown	Review					View WB Page	View WB on EPA Water Map
20	IE_SW_100_0300	White's Marsh	Coastal	Cork County Council	SAC; SPA;	Unassigned	Unassigned	Unassigned	Good	Unknown	Review					View WB Page	View WB on EPA Water Map
20	IE_SW_100_0400	Clogheen Strand	Coastal	Cork County Council	SAC; SPA;	Unassigned	Unassigned	Unassigned	Good	Unknown	Review					View WB Page	View WB on EPA Water Map
20	IE_SW_110_0000	Rosscarbery Bay	Coastal	Cork County Council	BW; SAC;	Unassigned	Good	Good	Good	2021 or earlier	Review			Rosscarbery	LAWPRO, Restoration	View WB Page	View WB on EPA Water Map
20	IE_SW_120_0000	Fastnet Waters	Coastal	Cork County Council		Unassigned	Unassigned	Unassigned	Good	Unknown	Review					View WB Page	View WB on EPA Water Map
20	IE_SW_140_0000	Roaring Water Bay	Coastal	Cork County Council	SAC; SF;	Good	Good	Good	Good	2021 or earlier	Not at risk					View WB Page	View WB on EPA Water Map
20	IE_SW_140_0100	Ballyriside Bridge Lagoon	Coastal	Cork County Council		Unassigned	Unassigned	Unassigned	Good	Unknown	Review					View WB Page	View WB on EPA Water Map
20, 21, 22, 23	IE_SW_150_0000	South Western Atlantic Seaboard (HAs 21;22)	Coastal	Kerry County Council	BW; SAC; SPA; SF;	Unassigned	High	High	Good	2021 or earlier	Not at risk					View WB Page	View WB on EPA Water Map
18, 19, 20	IE_SW_G_004	Ballinhassig East	Groundwater	Cork County Council	DWPA; SAC	Good	Good	Good	Good	2021 or earlier	Not at risk					View WB Page	View WB on EPA Water Map
18, 19, 20, 21, 22	IE_SW_G_005	Ballinhassig West	Groundwater	Cork County Council	DWPA; SAC	Good	Good	Good	Good	2021 or earlier	Not at risk					View WB Page	View WB on EPA Water Map
20	IE_SW_G_013	Bandon Islands	Groundwater	Cork County Council	DWPA; SAC	Good	Good	Good	Good	2021 or earlier	Not at risk					View WB Page	View WB on EPA Water Map
20	IE_SW_G_016	Waste Facility (W0089-02)	Groundwater	Cork County Council	DWPA	Poor	Good	Good	Good	2021 or earlier	Not at risk					View WB Page	View WB on EPA Water Map
19, 20, 21, 22	IE_SW_G_019	Beara Sneem	Groundwater	Kerry County Council	DWPA; SAC	Good	Good	Good	Good	2021 or earlier	Not at risk					View WB Page	View WB on EPA Water Map
20, 21	IE_SW_G_085	Skibbereen-Clonakilty	Groundwater	Cork County Council	DWPA; SAC	Good	Good	Good	Good	2021 or earlier	Not at risk					View WB Page	View WB on EPA Water Map
19, 20, 21	IE_SW_G_086	Bandon	Groundwater	Cork County Council	DWPA; SAC	Good	Good	Good	Good	2021 or earlier	Not at risk					View WB Page	View WB on EPA Water Map
19, 20	IE_SW_G_087	Brinny Gravels East	Groundwater	Cork County Council	DWPA	Good	Good	Good	Good	2021 or earlier	Not at risk					View WB Page	View WB on EPA Water Map
19, 20	IE_SW_G_088	Brinny Gravels West	Groundwater	Cork County Council	DWPA	Good	Good	Good	Good	2021 or earlier	Review					View WB Page	View WB on EPA Water Map
20	IE_SW_20_133	Tooreen	Lake	Cork County Council	DWPA; SAC;	Good	Good	Good	Good	2021 or earlier	Not at risk					View WB Page	View WB on EPA Water Map
20	IE_SW_20_148	Abisdealy	Lake	Cork County Council	DWPA;	Poor	Moderate	Moderate	Good	2022-2027	At risk	Nutrients	Ag	Abisdealy	Cork County Council, Restoration	View WB Page	View WB on EPA Water Map
20	IE_SW_20_150	Ballin CK	Lake	Cork County Council		Poor	Poor	Moderate	Good	2022-2027	At risk	Hydrological	HYMO	Ballin	Cork County Council, Restoration	View WB Page	View WB on EPA Water Map
20	IE_SW_20_153	Coolkellure	Lake	Cork County Council	DWPA;	Moderate	Moderate	Moderate	Good	2022-2027	At risk	Nutrients	For	Caha	LAWPRO, Restoration	View WB Page	View WB on EPA Water Map
20	IE_SW_20_158	Curraghalicky	Lake	Cork County Council	DWPA;	Moderate	Moderate	Poor	Good	2022-2027	At risk	UnknownImpactType	Unknown			View WB Page	View WB on EPA Water Map
20	IE_SW_20_53	Skeagh	Lake	Cork County Council	DWPA;	Moderate	Good	Moderate	Good	2022-2027	At risk	Nutrients	Unknown			View WB Page	View WB on EPA Water Map
20	IE_SW_20A020045	ARGIDEEN_010	River	Cork County Council	Fish;	Good	Good	Good	Good	2021 or earlier	Not at risk					View WB Page	View WB on EPA Water Map
20	IE_SW_20A020060	ARGIDEEN_020	River	Cork County Council	Fish;	Good	Good	Good	Good	2021 or earlier	Not at risk					View WB Page	View WB on EPA Water Map
20	IE_SW_20A020100	ARGIDEEN_030	River	Cork County Council	DWPA; Fish;	Good	Good	Moderate	Good	2022-2027	At risk	Nutrients	Ag			View WB Page	View WB on EPA Water Map
20	IE_SW_20A020200	ARGIDEEN_040	River	Cork County Council	Fish;	Good	Good	Good	Good	2021 or earlier	Not at risk					View WB Page	View WB on EPA Water Map
20	IE_SW_20A300900	ARTITEIGE_010	River	Cork County Council		Unassigned	Unassigned	Good	Good	2021 or earlier	Review					View WB Page	View WB on EPA Water Map
20	IE_SW_20A360930	ARDUSLOUGH_010	River	Cork County Council	DWPA; SAC;	Unassigned	Good	Good	Good	2021 or earlier	Not at risk					View WB Page	View WB on EPA Water Map
20	IE_SW_20A430910	Ardgehane_010	River	Cork County Council	SAC;	Unassigned	Good	Good	Good	2021 or earlier	Not at risk					View WB Page	View WB on EPA Water Map
20	IE_SW_20B010700	BALLYMAHANE_010	River	Cork County Council		Good	Good	Good	High	2022-2027	At risk	Morphological	HYMO			View WB Page	View WB on EPA Water Map
20	IE_SW_20B011000	BALLYMAHANE_020	River	Cork County Council		Good	Good	Good	Good	2021 or earlier	Not at risk					View WB Page	View WB on EPA Water Map

20	IE_SW_20B020050	BANDON_010	River	Cork County Council		Good	Good	Good	Good	2021 or earlier	Not at risk				Caha	LAWPRO, Restoration	View WB Page	View WB on EPA Water Map
20	IE_SW_20B020200	BANDON_020	River	Cork County Council	DWPA; SAC;	Good	Good	Moderate	Good	2022-2027	At risk	Nutrients	Ag		Caha	LAWPRO, Restoration	View WB Page	View WB on EPA Water Map
20	IE_SW_20B020300	BANDON_030	River	Cork County Council	SAC;	Good	Moderate	Moderate	Good	2022-2027	At risk	Sediment, Nutrients, Organic	Ag, UWW		Sally River	Cork County Council, Restoration	View WB Page	View WB on EPA Water Map
20	IE_SW_20B020400	BANDON_040	River	Cork County Council	SAC;	Good	Good	Good	Good	2021 or earlier	Not at risk						View WB Page	View WB on EPA Water Map
20	IE_SW_20B020550	BANDON_050	River	Cork County Council	DWPA;	Good	Good	Good	Good	2021 or earlier	Review						View WB Page	View WB on EPA Water Map
20	IE_SW_20B020600	BANDON_060	River	Cork County Council		Moderate	Moderate	Moderate	Good	2022-2027	At risk	UnknownImpactType	Unknown				View WB Page	View WB on EPA Water Map
20	IE_SW_20B020700	BANDON_070	River	Cork County Council	DWPA;	Good	Good	Good	Good	2021 or earlier	Not at risk						View WB Page	View WB on EPA Water Map
20	IE_SW_20B020780	BANDON_080	River	Cork County Council		Unassigned	Moderate	Good	Good	2021 or earlier	Review						View WB Page	View WB on EPA Water Map
20	IE_SW_20B020800	BANDON_090	River	Cork County Council		Good	Moderate	Good	Good	2021 or earlier	Not at risk				Lower Bandon	Cork County Council, Restoration	View WB Page	View WB on EPA Water Map
20	IE_SW_20B020900	BANDON_100	River	Cork County Council	DWPA; NSA;	Good	Moderate	Good	Good	2021 or earlier	Not at risk				Lower Bandon	Cork County Council, Restoration	View WB Page	View WB on EPA Water Map
20	IE_SW_20B030200	BAWNAKNOCKANE_010	River	Cork County Council		Good	Good	High	Good	2021 or earlier	Not at risk						View WB Page	View WB on EPA Water Map
20	IE_SW_20B040300	BLACKWATER (BANDON)_010	River	Cork County Council		Good	Moderate	Good	Good	2021 or earlier	Not at risk				Blackwater (Bandon)	Cork County Council, Restoration	View WB Page	View WB on EPA Water Map
20	IE_SW_20B040600	BLACKWATER (BANDON)_020	River	Cork County Council		Good	Good	Good	Good	2021 or earlier	Not at risk				Blackwater (Bandon)	Cork County Council, Restoration	View WB Page	View WB on EPA Water Map
20	IE_SW_20B040800	BLACKWATER (BANDON)_030	River	Cork County Council		Good	Good	Good	High	2022-2027	At risk	Morphological, Nutrients	Ag		Blackwater (Bandon)	Cork County Council, Restoration	View WB Page	View WB on EPA Water Map
20	IE_SW_20B070070	BRINNY_010	River	Cork County Council		Good	Good	Good	Good	2021 or earlier	Not at risk						View WB Page	View WB on EPA Water Map
20	IE_SW_20B070100	BRINNY_020	River	Cork County Council		High	High	High	High	2021 or earlier	Not at risk						View WB Page	View WB on EPA Water Map
20	IE_SW_20B080800	BEALANASCARTANE_010	River	Cork County Council		Moderate	Moderate	Good	Good	2021 or earlier	Not at risk						View WB Page	View WB on EPA Water Map
20	IE_SW_20B090100	BALLINSPIITTE_010	River	Cork County Council		Good	Moderate	Moderate	Good	2022-2027	At risk	Sediment, Hydrological, Nutrients	Unknown, Ag		Ballinspittle	Cork County Council, Restoration	View WB Page	View WB on EPA Water Map
20	IE_SW_20B100200	BURRANE_010	River	Cork County Council	SAC; SPA;	Good	Good	Good	Good	2021 or earlier	Not at risk						View WB Page	View WB on EPA Water Map
20	IE_SW_20B940880	BARRERAGH_010	River	Cork County Council	SAC; SPA;	Unassigned	Moderate	Good	Good	2021 or earlier	Review						View WB Page	View WB on EPA Water Map
20	IE_SW_20C010400	CAHA_010	River	Cork County Council		High	High	High	High	2021 or earlier	Not at risk				Caha	LAWPRO, Restoration	View WB Page	View WB on EPA Water Map
20	IE_SW_20C010700	CAHA_020	River	Cork County Council	SAC;	Good	Good	Good	High	2022-2027	At risk	Sediment, Morphological, Nutrients, Organic	Ag, For, HYMO, Other, M+Q		Caha	LAWPRO, Restoration	View WB Page	View WB on EPA Water Map
20	IE_SW_20C020810	CASHEL (CORK)_010	River	Cork County Council		Good	Good	Moderate	Good	2022-2027	At risk	Nutrients	Ag				View WB Page	View WB on EPA Water Map
20	IE_SW_20C030400	CLODAGH_010	River	Cork County Council		Good	Good	Moderate	Good	2022-2027	At risk	Sediment, Nutrients	Ag				View WB Page	View WB on EPA Water Map
20	IE_SW_20C050300	CLONAKILTY STREAM_010	River	Cork County Council	NSA;	Good	Poor	Moderate	Good	2022-2027	At risk	Sediment, Morphological, Nutrients	UR, Ag, Unknown		Clonakilty	LAWPRO, Restoration	View WB Page	View WB on EPA Water Map
20	IE_SW_20C060300	CARHOO_010	River	Cork County Council	SAC; SPA;	Moderate	Good	Good	Good	2021 or earlier	Not at risk				Clonakilty	LAWPRO, Restoration	View WB Page	View WB on EPA Water Map
20	IE_SW_20C120530	CARRIGLUSKY_010	River	Cork County Council		Unassigned	Good	Good	Good	2021 or earlier	Not at risk						View WB Page	View WB on EPA Water Map
20	IE_SW_20D010050	DINY_010	River	Cork County Council		Good	Poor	Moderate	Good	2022-2027	At risk	Sediment, Nutrients	For, Ag		Sally River	Cork County Council, Restoration	View WB Page	View WB on EPA Water Map
20	IE_SW_20D600820	DERRYNAGASHA_010	River	Cork County Council	NSA;	Unassigned	Moderate	Good	Good	2021 or earlier	Review				Bandon estuary	LAWPRO, Restoration	View WB Page	View WB on EPA Water Map
20	IE_SW_20D710620	DOONAVANIG_010	River	Cork County Council		Unassigned	Unassigned	Good	Good	2021 or earlier	Not at risk						View WB Page	View WB on EPA Water Map
20	IE_SW_20D730990	DROMDOUGH_010	River	Cork County Council	NSA;	Unassigned	Moderate	Good	Good	2021 or earlier	Not at risk						View WB Page	View WB on EPA Water Map
20	IE_SW_20D770630	DERREENNATRA_010	River	Cork County Council	SAC;	Unassigned	Good	Good	Good	2021 or earlier	Not at risk						View WB Page	View WB on EPA Water Map
20	IE_SW_20E050970	East Cruary_010	River	Cork County Council	SAC; SPA;	Unassigned	Moderate	Good	Good	2021 or earlier	Review						View WB Page	View WB on EPA Water Map
20	IE_SW_20E070850	SKULL_010	River	Cork County Council	DWPA; SAC;	Unassigned	Unassigned	Good	Good	2021 or earlier	Review						View WB Page	View WB on EPA Water Map
20	IE_SW_20F310780	Flaxfort Strand_010	River	Cork County Council	SAC; SPA;	Unassigned	High	Good	Good	2021 or earlier	Not at risk						View WB Page	View WB on EPA Water Map
20	IE_SW_20F330850	Farranamoy_010	River	Cork County Council		Unassigned	Poor	Good	Good	2021 or earlier	Not at risk						View WB Page	View WB on EPA Water Map
20	IE_SW_20G020400	GLASHAGLORAGH (CORK)_010	River	Cork County Council		High	High	High	High	2021 or earlier	Not at risk						View WB Page	View WB on EPA Water Map
20	IE_SW_20H070690	Hayes' Cross Roads_010	River	Cork County Council	SAC;	Unassigned	Moderate	Moderate	Good	2022-2027	Review				Kilkeran Lagoon	LAWPRO, Restoration	View WB Page	View WB on EPA Water Map
20	IE_SW_20I010100	ILEN_010	River	Cork County Council	DWPA;	Good	Good	Good	Good	2021 or earlier	Not at risk						View WB Page	View WB on EPA Water Map
20	IE_SW_20I010160	ILEN_020	River	Cork County Council		Good	High	High	Good	2021 or earlier	Not at risk						View WB Page	View WB on EPA Water Map
20	IE_SW_20I010300	ILEN_030	River	Cork County Council	DWPA;	High	High	High	High	2021 or earlier	Not at risk						View WB Page	View WB on EPA Water Map

20	IE_SW_20I010350	ILEN_040	River	Cork County Council		Unassigned	Good	Good	Good	2021 or earlier	Review					View WB Page	View WB on EPA Water Map
20	IE_SW_20K010100	KILBRITTAIN_010	River	Cork County Council		Good	Good	Good	Good	2021 or earlier	Not at risk					View WB Page	View WB on EPA Water Map
20	IE_SW_20K010300	KILBRITTAIN_020	River	Cork County Council	SAC; SPA;	Good	Good	Good	Good	2021 or earlier	Review					View WB Page	View WB on EPA Water Map
20	IE_SW_20K050700	KNOCKROE_010	River	Cork County Council		Unassigned	Good	Good	Good	2021 or earlier	Not at risk					View WB Page	View WB on EPA Water Map
20	IE_SW_20K190980	KNOCKNABOHILLY_010	River	Cork County Council	NSA;	Unassigned	Moderate	Good	Good	2021 or earlier	Review			Bandon estuary	LAWPRO, Restoration	View WB Page	View WB on EPA Water Map
20	IE_SW_20K800990	KILLANAMAUL_010	River	Cork County Council	NSA;	Unassigned	Good	Good	Good	2021 or earlier	Not at risk					View WB Page	View WB on EPA Water Map
20	IE_SW_20K950970	KILLANGAL_010	River	Cork County Council	SAC;	Unassigned	High	Good	Good	2021 or earlier	Not at risk					View WB Page	View WB on EPA Water Map
20	IE_SW_20K980910	KNOCKNACURRA_010	River	Cork County Council	NSA;	Unassigned	Good	Good	Good	2021 or earlier	Not at risk					View WB Page	View WB on EPA Water Map
20	IE_SW_20L010200	LEAMAWADDRA_010	River	Cork County Council		High	Good	High	High	2021 or earlier	Not at risk					View WB Page	View WB on EPA Water Map
20	IE_SW_20L010400	LEAMAWADDRA_020	River	Cork County Council	SAC;	High	High	High	High	2021 or earlier	Not at risk					View WB Page	View WB on EPA Water Map
20	IE_SW_20L040100	LEAP STREAM_010	River	Cork County Council	DWPA;	Good	Good	Good	Good	2021 or earlier	Not at risk					View WB Page	View WB on EPA Water Map
20	IE_SW_20L450850	LETTERSRAW_010	River	Cork County Council		Unassigned	Unassigned	Good	Good	2021 or earlier	Review					View WB Page	View WB on EPA Water Map
20	IE_SW_20L510960	LAHERFINEEN_010	River	Cork County Council	NSA;	Unassigned	Good	Good	Good	2021 or earlier	Review			Bandon estuary	LAWPRO, Restoration	View WB Page	View WB on EPA Water Map
20	IE_SW_20L560540	LOWERTOWN_010	River	Cork County Council	SAC;	Unassigned	Good	Good	Good	2021 or earlier	Not at risk					View WB Page	View WB on EPA Water Map
20	IE_SW_20M010100	MINANE_020	River	Cork County Council		Good	Good	Good	Good	2021 or earlier	Not at risk					View WB Page	View WB on EPA Water Map
20	IE_SW_20M010200	Minane (Cork)_010	River	Cork County Council	SPA;	Unassigned	Moderate	Good	Good	2021 or earlier	Review					View WB Page	View WB on EPA Water Map
20	IE_SW_20M580810	MALLAVONEA_010	River	Cork County Council		Unassigned	Unassigned	Good	Good	2021 or earlier	Review					View WB Page	View WB on EPA Water Map
20	IE_SW_20N050960	Newborough_010	River	Cork County Council		Unassigned	Moderate	Good	Good	2021 or earlier	Not at risk					View WB Page	View WB on EPA Water Map
20	IE_SW_20N100620	North Ring Curraghgrane_010	River	Cork County Council	NSA;	Unassigned	Good	Good	Good	2021 or earlier	Review			Clonakilty	LAWPRO, Restoration	View WB Page	View WB on EPA Water Map
20	IE_SW_20O010200	OWENKEAGH_010	River	Cork County Council		Good	Good	Good	Good	2021 or earlier	Not at risk					View WB Page	View WB on EPA Water Map
20	IE_SW_20O010600	OWENKEAGH_020	River	Cork County Council		Good	Good	Good	Good	2021 or earlier	Not at risk					View WB Page	View WB on EPA Water Map
20	IE_SW_20O020200	OWENNASHINGAUN_010	River	Cork County Council		Good	High	High	High	2021 or earlier	Not at risk					View WB Page	View WB on EPA Water Map
20	IE_SW_20O020700	OWENNASHINGAUN_020	River	Cork County Council		High	High	High	High	2021 or earlier	Not at risk					View WB Page	View WB on EPA Water Map
20	IE_SW_20O030400	OWNAHINCHY_010	River	Cork County Council		Moderate	Good	Moderate	Good	2022-2027	At risk	Nutrients	Ag	Rosscarbery	LAWPRO, Restoration	View WB Page	View WB on EPA Water Map
20	IE_SW_20O060910	Oughter Callaros_010	River	Cork County Council	SAC;	Unassigned	High	Good	Good	2021 or earlier	Not at risk					View WB Page	View WB on EPA Water Map
20	IE_SW_20R010400	RATHRUANE_010	River	Cork County Council		High	High	High	High	2021 or earlier	Not at risk					View WB Page	View WB on EPA Water Map
20	IE_SW_20R020800	ROURY_010	River	Cork County Council		Good	Good	Moderate	Good	2022-2027	At risk	Nutrients	Ag			View WB Page	View WB on EPA Water Map
20	IE_SW_20R021000	ROURY_020	River	Cork County Council		Good	Good	Good	Good	2021 or earlier	Not at risk					View WB Page	View WB on EPA Water Map
20	IE_SW_20R030900	Roaring Water River_010	River	Cork County Council	SAC;	Unassigned	Good	Good	Good	2021 or earlier	Review					View WB Page	View WB on EPA Water Map
20	IE_SW_20S010400	SAIVNOSE_010	River	Cork County Council		Good	Good	Good	Good	2021 or earlier	Not at risk					View WB Page	View WB on EPA Water Map
20	IE_SW_20S010900	SAIVNOSE_020	River	Cork County Council		Good	Good	Good	Good	2021 or earlier	Not at risk					View WB Page	View WB on EPA Water Map
20	IE_SW_20S020500	SALL_010	River	Cork County Council		Good	Good	Good	Good	2021 or earlier	Not at risk					View WB Page	View WB on EPA Water Map
20	IE_SW_20S030800	STICK_010	River	Cork County Council		Good	Good	Good	Good	2021 or earlier	Not at risk					View WB Page	View WB on EPA Water Map
20	IE_SW_20S360700	SHANAVAGH_010	River	Cork County Council	SAC;	Unassigned	High	Good	Good	2021 or earlier	Review					View WB Page	View WB on EPA Water Map
20	IE_SW_20T020050	TINNEEL STREAM_010	River	Cork County Council		Moderate	Moderate	Moderate	Good	2022-2027	At risk	Nutrients	Ag	Rosscarbery	LAWPRO, Restoration	View WB Page	View WB on EPA Water Map
20	IE_SW_20T030990	TOORMORE_010	River	Cork County Council		Unassigned	Good	Good	Good	2021 or earlier	Not at risk					View WB Page	View WB on EPA Water Map
20	IE_SW_20W050990	WHITE STRAND_010	River	Cork County Council		Unassigned	High	Good	Good	2021 or earlier	Not at risk					View WB Page	View WB on EPA Water Map
20	IE_SW_070_0100	Oysterhaven	Transitional	Cork County Council	SF;	Unassigned	Moderate	Moderate	Good	2022-2027	At risk	Nutrients	Ag	Oysterhaven	Cork County Council, Restoration	View WB Page	View WB on EPA Water Map
20	IE_SW_070_0200	Oysterhaven Lake, Clashroe	Transitional	Cork County Council		Unassigned	Bad	Moderate	Good	2022-2027	Review			Oysterhaven	Cork County Council, Restoration	View WB Page	View WB on EPA Water Map
20	IE_SW_080_0100	Lower Bandon Estuary	Transitional	Cork County Council	SF; NSA;	Moderate	Moderate	Poor	Good	2022-2027	At risk	Nutrients, Organic	Ag	Bandon estuary	LAWPRO, Restoration	View WB Page	View WB on EPA Water Map
20	IE_SW_080_0300	Upper Bandon Estuary	Transitional	Cork County Council	NSA;	Moderate	Poor	Poor	Good	2022-2027	At risk	Nutrients, Organic	Ag	Bandon estuary	LAWPRO, Restoration	View WB Page	View WB on EPA Water Map
20	IE_SW_090_0200	Argideen Estuary	Transitional	Cork County Council	SAC; SPA;	Poor	Poor	Moderate	Good	2022-2027	At risk	Nutrients, Organic	Ag, UWW			View WB Page	View WB on EPA Water Map

20	IE_SW_100_0100	Clonakilty Harbour	Transitional	Cork County Council	SAC; SPA; NSA;	Moderate	Poor	Poor	Good	2022-2027	At risk	Nutrients, Organic	Ag	Clonakilty	LAWPRO, Restoration	View WB Page	View WB on EPA Water Map
20	IE_SW_110_0100	Kilkeran Lake	Transitional	Cork County Council	SAC;	Poor	Bad	Bad	Good	2022-2027	Review			Kilkeran Lagoon	LAWPRO, Restoration	View WB Page	View WB on EPA Water Map
20	IE_SW_110_0200	Rosscarbery Harbour	Transitional	Cork County Council		Unassigned	Poor	Moderate	Good	2022-2027	At risk	Nutrients	Ag	Rosscarbery	LAWPRO, Restoration	View WB Page	View WB on EPA Water Map
20	IE_SW_110_0300	Glandore Harbour	Transitional	Cork County Council	SAC;	Unassigned	Moderate	Moderate	Good	2022-2027	Review					View WB Page	View WB on EPA Water Map
20	IE_SW_130_0100	Ilven Estuary	Transitional	Cork County Council	SAC; SF;	Moderate	Moderate	Poor	Good	2022-2027	At risk	Nutrients, Organic	UR, Ag, UWW			View WB Page	View WB on EPA Water Map
20, 21	IE_SW_140_0200	Lissagriffin Lake	Transitional	Cork County Council	SAC;	Unassigned	Good	Good	Good	2021 or earlier	Review			Lissagriffin Lake	Cork County Council, Protection	View WB Page	View WB on EPA Water Map