



Cycle 3

**HA 19 Lee, Cork Harbour and Youghal Bay
Catchment Report, May 2024**

Water Quality Summary

Introduction

Water Quality Summary

High Status Objectives

Water Quality Changes

WFD Risk

Significant Pressures

Action

Summary Information

The dashboard below provides a breakdown of water quality status for surface and groundwater bodies in the Lee, Cork Harbour and Youghal Bay Catchment.

A total of 61% of surface waterbodies were at Good or High Ecological Status in the 2016-2021 monitoring period. Ninety-five percent of groundwater bodies were at Good status.

Go to EPA Water Maps for WFD Status

[EPA Water Map](#)

Water Quality Status

Select Period:

SW 2016-2021

Scale: National Catchment Subcatchment Local Authority

% Unit

19 Lee, Cork Harbour and Youghal Bay

Waterbodies: All Waterbodies Monitored Waterbodies only



Water quality status 2016-2021 for the Lee, Cork Harbour and Youghal Bay Catchment.
View Online Dashboard: <https://www.catchments.ie/data/#/dashboard/waterquality>

Introduction

Water Quality
Summary

High Status
Objectives

Water Quality
Changes

WFD Risk

Significant
Pressures

Action

Summary
Information

High Status Objective Waterbodies

High status waters are prioritised for protection and action.

There are 25 waterbodies with a **High Ecological Status Objective (HSO)** in the Lee, Cork Harbour and Youghal Bay Catchment, with 10 currently not meeting their environmental objective of High.

Grants for septic tank upgrades may be available in high status objective catchment areas - you can learn more and check your Eircode for eligibility here: <https://www.gov.ie/en/publication/6cc1e-domestic-waste-water-treatment-systems-septic-tanks>

[View HSO river waterbodies in this catchment.](#)

See *Status and Risk / High Status Objective* for other waterbody types.

	SW 2007-2009	SW 2010-2012	SW 2010-2015	SW 2013-2018	SW 2016-2021
AWBOY_010 (River)	High	High	High	Good	High
BRIDE (LEE)_030 (River)	High	High	High	Good	Good
BUTLERSTOWN_020 (River)	Good	High	High	High	Good
DISSOUR_010 (River)	Moderate	Good	High	High	High
DOUGLAS (SULLANE)_010 (River)	High	High	High	High	High
DRIPSEY_020 (River)	Good	High	High	Good	High
FOHERISH_010 (River)	High	High	High	Good	High
FOHERISH_020 (River)	High	Good	Good	Good	High
FOHERISH_040 (River)	High	High	High	High	High

Water quality status for High Ecological Status Objective waterbodies.

View Online Dashboard: <https://www.catchments.ie/data/#/dashboard/waterquality>

High Status Objective Waterbodies

Introduction

Water Quality Summary

High Status Objectives

Water Quality Changes

WFD Risk

Significant Pressures

Action

Summary Information

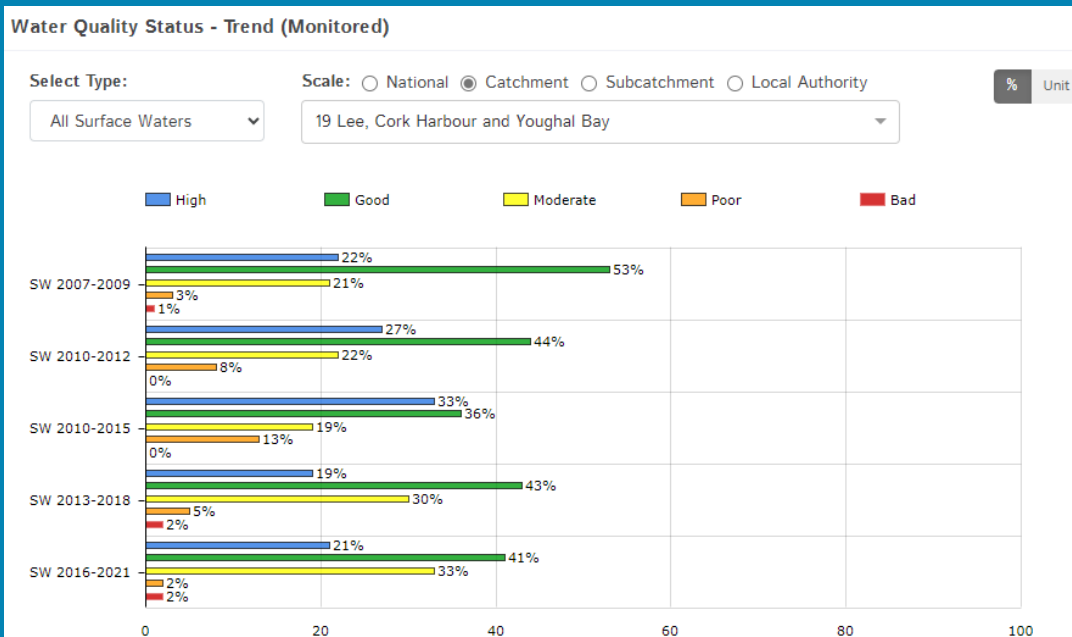
	SW 2007-2009	SW 2010-2012	SW 2010-2015	SW 2013-2018	SW 2016-2021
LANEY_010 (River)	Good	High	High	High	Good
LANEY_020 (River)	High	High	High	High	High
LANEY_030 (River)	High	High	High	High	High
LANEY_040 (River)	High	High	High	Good	High
LEE (CORK)_040 (River)	Good	High	High	High	Good
MARTIN_030 (River)	Good	High	High	Good	Good
OWENNACURRA_010 (River)	Good	Good	High	High	Good
OWENNACURRA_020 (River)	Good	Good	High	High	High
SHOURNAGH_020 (River)	High	High	High	Good	High
SHOURNAGH_030 (River)	Good	High	High	Moderate	Moderate
SHOURNAGH_040 (River)	Good	High	High	Moderate	Good
SULLANE_010 (River)	Good	High	High	Good	Good
SULLANE_020 (River)	Good	High	High	Good	Good
SULLANE_030 (River)	Unassigned	Unassigned	High	High	High
SULLANE_040 (River)	High	High	Good	Good	High
SULLANE_050 (River)	High	High	High	High	High

Water quality status for High Ecological Status Objective waterbodies.

View Online Dashboard: <https://www.catchments.ie/data/#/dashboard/waterquality>

Water Quality Changes

Below illustrates the changes in ecological status in monitored surface waterbodies over the last five monitoring cycles in the Lee, Cork Harbour and Youghal Bay Catchment. Nationally while there have been improvements in some waterbodies, these have been offset by declines elsewhere.



Ecological status trends for monitored surface waterbodies over the last five monitoring cycles in the Lee, Cork Harbour and Youghal Bay Catchment.

View online dashboard: <https://www.catchments.ie/data/#/dashboard/waterquality>

	Total	Achieving Environmental Objectives (2016-2021)	High Status Environmental Objectives Waterbodies	Achieving High Status Environmental Objectives (2016-2021)
Rivers	92	56 (61%)	25	15 (60%)
Canals	-	-	-	-
Lakes	3	1 (33%)	0	0 (0%)
Transitional	13	1 (8%)	0	0 (0%)
Coastal	6	2 (33%)	0	0 (0%)
Groundwater	22	21 (95%)	0	0 (0%)

A total of 81 (60%) waterbodies are currently meeting their environmental objective of Good or High Ecological Status.

Introduction

Water Quality Summary

High Status Objectives

Water Quality Changes

WFD Risk

Significant Pressures

Action

Summary Information

WFD Risk

A total of 45 (33%) waterbodies are *At Risk* of not meeting their environmental objective in the Lee, Cork Harbour and Youghal Bay Catchment, while 32 (24%) are under *Review* and 59 (43%) are *Not At Risk*.

Go to [EPA Water Map](#) to see *WFD Risk for this catchment*



WFD Risk for the Lee, Cork Harbour and Youghal Bay Catchment based on 2016-2021 data.

View Online Dashboard: <https://www.catchments.ie/data/#/dashboard/waterquality>

There are currently five heavily modified water bodies (HMWBs) in the Lee, Cork Harbour and Youghal Bay Catchment:

- Cork Harbour (*At Risk*)
- Lough Mahon (*At Risk*)
- Lee (Cork) Estuary Lower (*At Risk*)
- Inniscarra (*Not at Risk*)
- Carrigdrohid (*At Risk*)

There are no artificial waterbodies in the Lee, Cork Harbour and Youghal Bay Catchment.

The [EPA's characterisation outcome report](#) has more information on WFD Risk

Introduction

Water Quality Summary

High Status Objectives

Water Quality Changes

WFD Risk

Significant Pressures

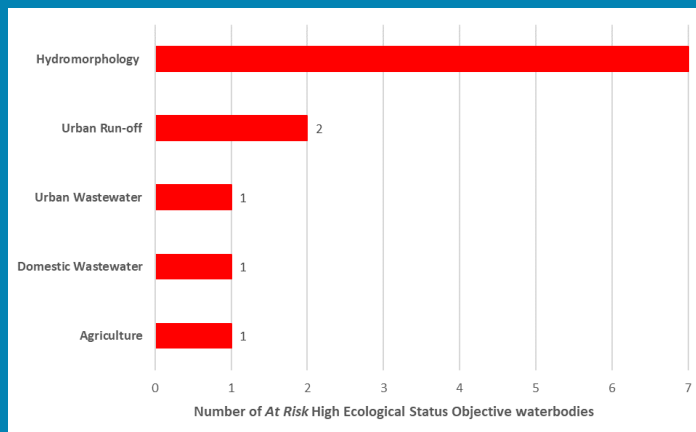
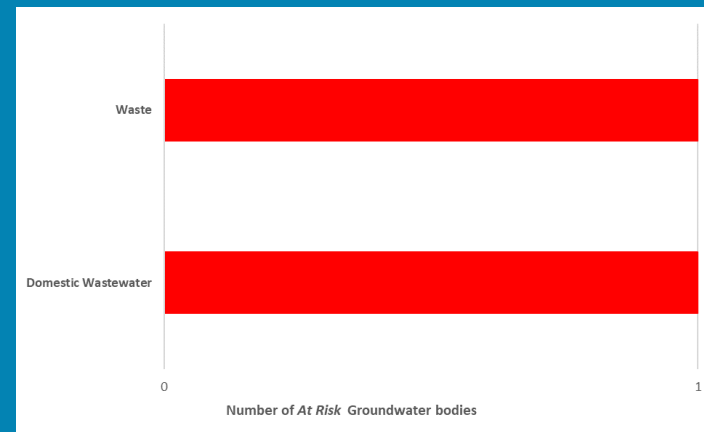
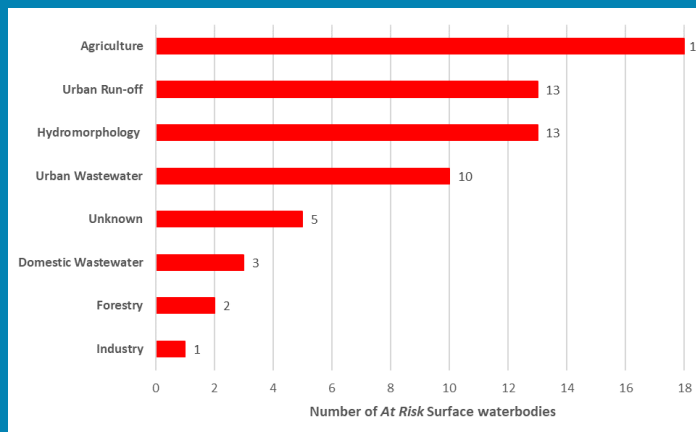
Action

Summary Information

Click [here](#) for more information on significant pressures

Significant Pressures driving risk

Significant pressure types impacting the 43 *At Risk* surface waterbodies and two groundwater bodies are broken down in the figures below, including significant pressure information for the nine *At Risk* High Ecological Status Objective waterbodies.



The issues driven by these pressures are mainly nutrient pollution, organic pollution and altered morphological condition (habitat) impacts for surface water, and chemical quality diminution for surface water and nutrient pollution for groundwaters. For more information, see <https://www.catchments.ie/data/#/dashboard/pressure?k=i351zs>.

Go to the Summary Information section to get significant pressure and issue data for At Risk waterbodies within the Lee, Cork Harbour and Youghal Bay Catchment.

Introduction

Water Quality Summary

High Status Objectives

Water Quality Changes

WFD Risk

Significant Pressures

Action

Summary Information

Introduction

Water Quality
Summary

High Status
Objectives

Water Quality
Changes

WFD Risk

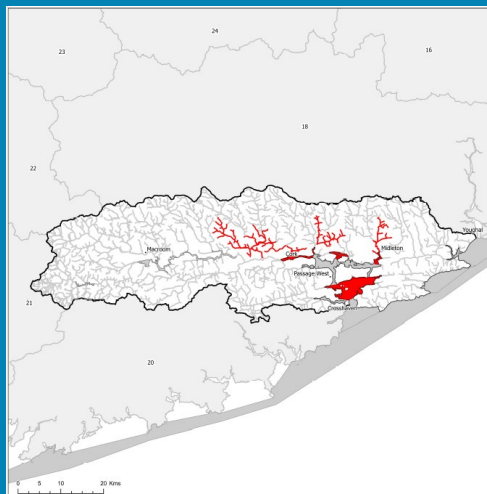
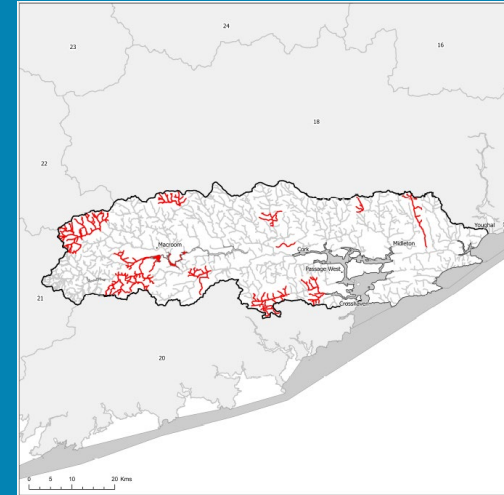
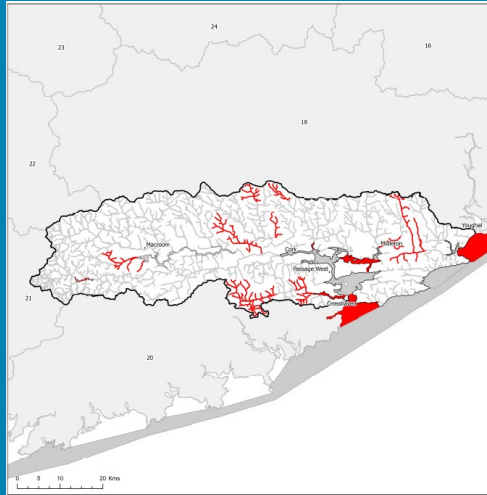
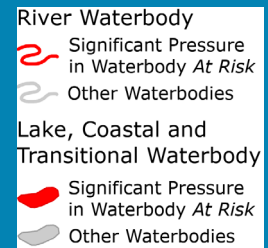
Significant
Pressures

Action

Summary
Information

Significant Pressures

Agriculture is the top significant pressure impacting 40% of the 45 *At Risk* waterbodies within the Lee, Cork Harbour and Youghal Bay Catchment, followed by 29% impacted by both hydromorphological pressures and urban run-off.



The catchments.ie dashboards will show all significant pressures identified for this catchment.

www.catchments.ie/data/#/dashboard/p/ressure

Go to the [EPA Water Maps](#) for the locations of all significant pressure types identified for this catchment

Locations of At Risk surface waterbodies impacted by i) Agriculture, ii) Hydromorphological Pressures and iii) Urban Run-off.

Introduction

Water Quality
Summary

High Status
Objectives

Water Quality
Changes

WFD Risk

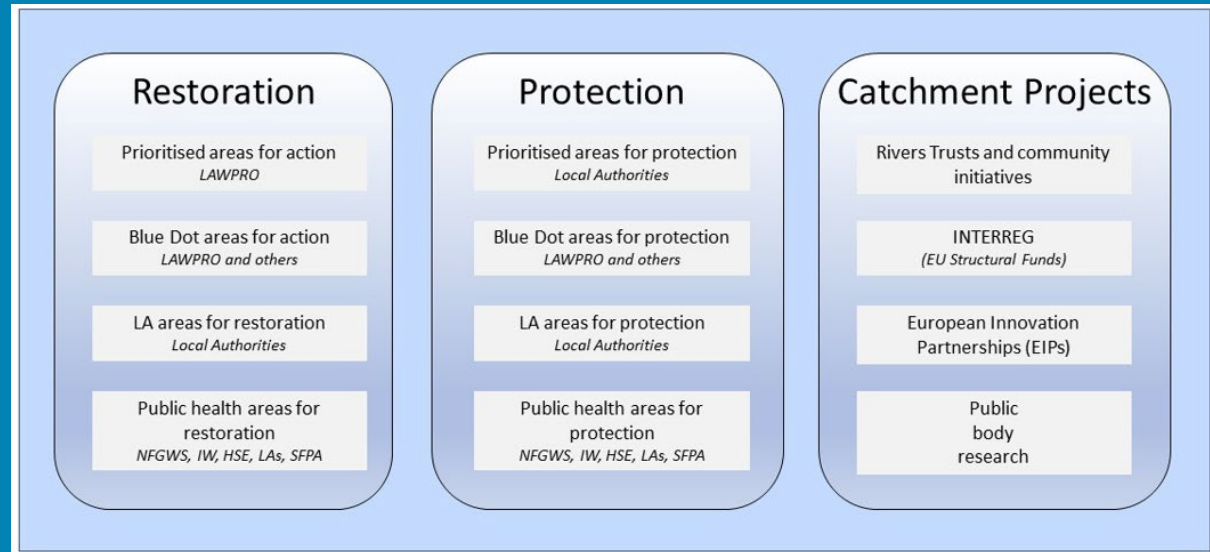
Significant
Pressures

Action

Summary
Information

Priority Areas for Action

A number of waterbodies have been prioritised through the selection of Areas for Action. There were seven Priority Areas for Action identified for the second river basin management planning cycle in the Lee, Cork Harbour and Youghal Bay Catchment. This has increased to a total of 13 Areas for Restoration, two Areas for Protection and one Catchment Project for the third cycle. ***Go to the summary information section to get Area for Action information for waterbodies within the Lee, Cork Harbour and Youghal Bay Catchment.***



Types of Areas for Action under the third cycle River Basin Management Plan

- View the current progress of Areas for Action and Summary Reports completed by LAWPRO, on catchments.ie and the EPA Water Map:
 - <https://www.catchments.ie/data/#/areaforaction>
 - https://gis.epa.ie/EPAMaps/default?easting=?&northing=?&lid=EPA:WFD_AreasForAction
- LAWPRO have also published detailed desktop studies on Prioritised Areas for Action (PAAs) which are available their website: <https://lawaters.ie/desktop-studies/>
- Information on Areas for Action for the second cycle is available in Cycle 2 Catchment Assessments which have been archived on catchments.ie: <https://www.catchments.ie/download/cycle-2-catchment-assessments-published-september-2018/>

Introduction

Water Quality
Summary

High Status
Objectives

Water Quality
Changes

WFD Risk

Significant
Pressures

Action

Summary
Information

Summary information for all waterbodies in the Lee, Cork Harbour and Youghal Bay Catchment

The next page provides a table with a breakdown of key information for all waterbodies in this catchment. The key is provided below. Additional information for each waterbody is available on <https://www.catchments.ie/data>, including a breakdown of status, a monitoring schedule for monitored waterbodies and downloadable chemistry results, where available.

Protected Area categories	BW: Bathing Water DW: Drinking Water Fish: Salmonid Waters NSA: Nutrient Sensitive Areas SAC: Special Area of Conservation, Natura 2000 (water dependent habitats and species) SF: Shellfish Area SPA: Special Area of Protection, Natura 2000 (water dependent habitat and species)
Significant pressure* types categories <i>* For At Risk waterbodies only</i>	Ab: Abstractions Ag: Agriculture Aq: Aquaculture At: Atmospheric DWW: Domestic Wastewater For: Forestry HPS: Historically polluted sites HYMO: Hydromorphology Ind: Industry IS: Invasive Species M+Q: Mines and Quarries Peat: Peat Drainage and Extraction UR: Urban Run-Off UWW: Urban Wastewater Was: Waste WT: Water Treatment

Catchment Code	Waterbody (WB) Code	WB Name	WB Type	Local Authority	Protected Area	Status 10-15	Status 13-18	Status 16-21	Environmental Objective	Environmental Objective Date	WFD Risk 16-21	Significant Issue(s)	Significant Pressure(s)	Area for Action (AFA)	AFA (lead, type)	Link to WB page on catchments.ie	Link to WB on EPA Water Map
17, 19, 20	IE_SW_010_0000	Western Celtic Sea (HAS 18;19;20)	Coastal	Cork County Council	BW; SAC; SPA;	Unassigned	High	High	Good	2021 or earlier	Not at risk					View WB Page	View WB on EPA Water Map
17, 18, 19	IE_SW_020_0000	Youghal Bay	Coastal	Cork County Council	BW; SAC; SPA; SF; NSA;	Good	Moderate	Moderate	Good	2022-2027	At risk	Nutrients, Organic	Ag			View WB Page	View WB on EPA Water Map
19	IE_SW_040_0000	Ballycotton Bay	Coastal	Cork County Council	BW; SPA;	Unassigned	Good	Good	Good	2021 or earlier	Not at risk					View WB Page	View WB on EPA Water Map
19, 20	IE_SW_050_0000	Outer Cork Harbour	Coastal	Cork County Council	BW; SPA;	Good	Good	Moderate	Good	2022-2027	At risk	Nutrients	Ag			View WB Page	View WB on EPA Water Map
19	IE_SW_060_0000	Cork Harbour	Coastal	Cork County Council	SPA; SF; NSA;	Good	Moderate	Moderate	Good	2022-2027	At risk	Nutrients, Organic	UR, UWW			View WB Page	View WB on EPA Water Map
19	IE_SW_060_1000	Raffeen Lake, Shanbally	Coastal	Cork County Council	SPA;	Unassigned	Unassigned	Unassigned	Good	Unknown	Review					View WB Page	View WB on EPA Water Map
19	IE_SW_G_002	Ballincollig	Groundwater	Cork County Council	DWPA	Good	Good	Good	Good	2021 or earlier	Not at risk					View WB Page	View WB on EPA Water Map
18, 19, 20	IE_SW_G_004	Ballinhassig East	Groundwater	Cork County Council	DWPA; SAC	Good	Good	Good	Good	2021 or earlier	Not at risk					View WB Page	View WB on EPA Water Map
18, 19, 20, 21, 22	IE_SW_G_005	Ballinhassig West	Groundwater	Cork County Council	DWPA; SAC	Good	Good	Good	Good	2021 or earlier	Not at risk					View WB Page	View WB on EPA Water Map
19	IE_SW_G_009	Waste Facility (W0023-01)	Groundwater	Cork County Council	DWPA	Good	Good	Good	Good	2021 or earlier	Not at risk					View WB Page	View WB on EPA Water Map
19, 20, 21, 22	IE_SW_G_019	Beara Sneem	Groundwater	Kerry County Council	DWPA; SAC	Good	Good	Good	Good	2021 or earlier	Not at risk					View WB Page	View WB on EPA Water Map
18, 19, 21, 22	IE_SW_G_022	Cahersiveen	Groundwater	Kerry County Council	DWPA; SAC	Good	Good	Good	Good	2021 or earlier	Not at risk					View WB Page	View WB on EPA Water Map
19	IE_SW_G_028	Cloyne	Groundwater	Cork County Council	DWPA	Good	Good	Good	Good	2021 or earlier	Not at risk					View WB Page	View WB on EPA Water Map
17, 18, 19, 22	IE_SW_G_037	Glenville	Groundwater	Cork County Council	DWPA; SAC	Good	Good	Good	Good	2021 or earlier	Not at risk					View WB Page	View WB on EPA Water Map
19	IE_SW_G_045	Knockadoon East	Groundwater	Cork County Council	DWPA; SAC	Good	Good	Good	Good	2021 or earlier	Not at risk					View WB Page	View WB on EPA Water Map
19	IE_SW_G_046	Knockadoon West	Groundwater	Cork County Council	DWPA; SAC	Good	Good	Good	Good	2021 or earlier	Not at risk					View WB Page	View WB on EPA Water Map
18, 19	IE_SW_G_058	Midleton	Groundwater	Cork County Council	DWPA; SAC	Good	Good	Good	Good	2021 or earlier	Review					View WB Page	View WB on EPA Water Map
19	IE_SW_G_072	Ringaskiddy	Groundwater	Cork County Council	DWPA	Good	Good	Good	Good	2021 or earlier	Not at risk					View WB Page	View WB on EPA Water Map
19	IE_SW_G_079	Whitegate	Groundwater	Cork County Council	DWPA	Good	Good	Good	Good	2021 or earlier	Not at risk					View WB Page	View WB on EPA Water Map
19	IE_SW_G_083	Haulbowline Island	Groundwater	Cork County Council	DWPA	Good	Good	Good	Good	2021 or earlier	Not at risk					View WB Page	View WB on EPA Water Map
19, 20, 21	IE_SW_G_086	Bandon	Groundwater	Cork County Council	DWPA; SAC	Good	Good	Good	Good	2021 or earlier	Not at risk					View WB Page	View WB on EPA Water Map
19, 20	IE_SW_G_087	Brinny Gravels East	Groundwater	Cork County Council	DWPA	Good	Good	Good	Good	2021 or earlier	Not at risk					View WB Page	View WB on EPA Water Map
19, 20	IE_SW_G_088	Brinny Gravels West	Groundwater	Cork County Council	DWPA	Good	Good	Good	Good	2021 or earlier	Review					View WB Page	View WB on EPA Water Map
19	IE_SW_G_089	Industrial Facility (P0016-02)	Groundwater	Cork County Council	DWPA	Good	Good	Good	Good	2021 or earlier	Not at risk					View WB Page	View WB on EPA Water Map
19	IE_SW_G_090	LittleIsland	Groundwater	Cork County Council	DWPA; SAC	Good	Good	Good	Good	2021 or earlier	Not at risk					View WB Page	View WB on EPA Water Map
19	IE_SW_G_091	Waste Facility (W0012-03)	Groundwater	Cork City Council	DWPA	Poor	Poor	Poor	Good	2022-2027	At risk	ChemicalQualityDiminution ForSW, Nutrients	Was			View WB Page	View WB on EPA Water Map
19	IE_SW_G_092	Industrial Facility (P0028-01)	Groundwater	Cork County Council	DWPA; SAC	Poor	Good	Good	Good	2021 or earlier	Not at risk					View WB Page	View WB on EPA Water Map
19	IE_SW_G_094	Lee Valley Gravels	Groundwater	Cork County Council	DWPA	Good	Good	Good	Good	2021 or earlier	At risk	ChemicalQualityDiminution ForSW, Nutrients	DWTS			View WB Page	View WB on EPA Water Map
19	IE_SW_19_138	Inniscarra	Lake	Cork County Council	Fish;	Moderate	Moderate	Good	Good	2021 or earlier	Not at risk					View WB Page	View WB on EPA Water Map
19	IE_SW_19_139	Carrigdrohid	Lake	Cork County Council	SAC; Fish; SPA;	Poor	Moderate	Moderate	Good	2022-2027	At risk	Hydrological, Morphological, Nutrients	HYMO, Unknown	Carrigdrohid	LAWPRO, Restoration	View WB Page	View WB on EPA Water Map
19	IE_SW_19_4	Allua	Lake	Cork County Council		Poor	Poor	Poor	Good	2022-2027	At risk	Nutrients, Organic	Ag, For, UWW	Allua	LAWPRO, Restoration	View WB Page	View WB on EPA Water Map
19	IE_SW_19A020300	AUGHNABOY (CORK)_010	River	Cork County Council		Good	Good	Moderate	Good	2022-2027	At risk	Nutrients, Organic	Ag, DWTS	Owenboy	LAWPRO, Restoration	View WB Page	View WB on EPA Water Map
19	IE_SW_19A030200	AWBOY_010	River	Cork County Council		High	Good	High	High	2021 or earlier	Not at risk					View WB Page	View WB on EPA Water Map
19	IE_SW_19A200870	Ardnahunch_010	River	Cork County Council		Unassigned	Poor	Good	Good	2021 or earlier	Review					View WB Page	View WB on EPA Water Map
19	IE_SW_19A220720	Ardra More_010	River	Cork County Council		Unassigned	Moderate	Good	Good	2021 or earlier	Not at risk					View WB Page	View WB on EPA Water Map
19	IE_SW_19B020500	BLARNEY_010	River	Cork County Council		Good	Moderate	Moderate	Good	2022-2027	At risk	Nutrients, Organic	Ag, UWW	Blarney	Cork County Council, Restoration	View WB Page	View WB on EPA Water Map
19	IE_SW_19B040400	BRIDE (LEE)_010	River	Cork County Council		Good	High	Good	Good	2021 or earlier	Not at risk			Bride (Lee)	LAWPRO, Restoration	View WB Page	View WB on EPA Water Map
19	IE_SW_19B040610	BRIDE (LEE)_020	River	Cork County Council		Moderate	Good	Moderate	Good	2022-2027	Review			Bride (Lee)	LAWPRO, Restoration	View WB Page	View WB on EPA Water Map
19	IE_SW_19B040900	BRIDE (LEE)_030	River	Cork County Council		High	Good	Good	High	2022-2027	At risk	Morphological	HYMO	Bride (Lee)	LAWPRO, Restoration	View WB Page	View WB on EPA Water Map

19	IE_SW_19B041300	BRIDE (LEE)_040	River	Cork County Council		Poor	Poor	Moderate	Good	2022-2027	At risk	Nutrients	DWTS	Bride (Lee)	LAWPRO, Restoration	View WB Page	View WB on EPA Water Map
19	IE_SW_19B041600	BRIDE (LEE)_050	River	Cork County Council		High	Good	Good	Good	2021 or earlier	Review			Bride (Lee)	LAWPRO, Restoration	View WB Page	View WB on EPA Water Map
19	IE_SW_19B060200	BUTLERSTOWN_010	River	Cork County Council		Moderate	Moderate	Good	Good	2021 or earlier	Not at risk					View WB Page	View WB on EPA Water Map
19	IE_SW_19B060500	BUTLERSTOWN_020	River	Cork County Council	DWPA;	High	High	Good	High	2022-2027	Review					View WB Page	View WB on EPA Water Map
19	IE_SW_19B060800	BUTLERSTOWN_030	River	Cork County Council		Good	Good	Moderate	Good	2022-2027	At risk	Nutrients, Organic	UR			View WB Page	View WB on EPA Water Map
19	IE_SW_19B140110	BRIDE (Cork City)_010	River	Cork County Council		Unassigned	Moderate	Moderate	Good	2022-2027	At risk	Hydrological, Morphological, Nutrients, Organic	UR, HYMO	Bride (Cork City)	LAWPRO, Restoration	View WB Page	View WB on EPA Water Map
19	IE_SW_19B140300	BRIDE (Cork City)_020	River	Cork City Council	NSA;	Unassigned	Moderate	Poor	Good	2022-2027	At risk	Nutrients, Organic	UR	Bride (Cork City)	LAWPRO, Restoration	View WB Page	View WB on EPA Water Map
19	IE_SW_19C010200	CUSLOURA_010	River	Cork County Council		Good	Good	Good	Good	2021 or earlier	Not at risk					View WB Page	View WB on EPA Water Map
19	IE_SW_19C020500	CUMMER_010	River	Cork County Council		Good	Good	Good	Good	2021 or earlier	Not at risk					View WB Page	View WB on EPA Water Map
19	IE_SW_19C020800	CUMMER_020	River	Cork County Council		Good	Good	Good	Good	2021 or earlier	Not at risk			Carrigdrohid	LAWPRO, Restoration	View WB Page	View WB on EPA Water Map
19	IE_SW_19C120740	CURRAGHEEN (Cork City)_010	River	Cork County Council		Unassigned	Moderate	Moderate	Good	2022-2027	At risk	Nutrients	Unknown			View WB Page	View WB on EPA Water Map
19	IE_SW_19D030200	DISSOUR_010	River	Cork County Council		High	High	High	High	2021 or earlier	Not at risk			Dissour	LAWPRO, Restoration	View WB Page	View WB on EPA Water Map
19	IE_SW_19D030600	DISSOUR_020	River	Cork County Council		High	Good	Moderate	Good	2022-2027	Review			Dissour	LAWPRO, Restoration	View WB Page	View WB on EPA Water Map
19	IE_SW_19D040700	DOUGLAS (SULLANE)_010	River	Cork County Council		High	High	High	High	2021 or earlier	Not at risk					View WB Page	View WB on EPA Water Map
19	IE_SW_19D060150	DRIPSEY_010	River	Cork County Council		Poor	Good	Moderate	Good	2022-2027	At risk	Acidification	For			View WB Page	View WB on EPA Water Map
19	IE_SW_19D060400	DRIPSEY_020	River	Cork County Council		High	Good	High	High	2021 or earlier	Review					View WB Page	View WB on EPA Water Map
19	IE_SW_19D070500	DUNGOURNEY_010	River	Cork County Council		Good	Good	Good	Good	2021 or earlier	Review			Middleton	LAWPRO, Restoration	View WB Page	View WB on EPA Water Map
19	IE_SW_19D070700	DUNGOURNEY_020	River	Cork County Council	NSA;	Poor	Poor	Poor	Good	2022-2027	At risk	Nutrients, Organic	Ag, Ind	Middleton	LAWPRO, Restoration	View WB Page	View WB on EPA Water Map
19	IE_SW_19E040700	East Ballyvergan_010	River	Cork County Council	SAC; SPA;	Unassigned	Good	Good	Good	2021 or earlier	Review			East Ballyvergan	Cork County Council, Protection	View WB Page	View WB on EPA Water Map
19	IE_SW_19F010300	FINNOW (FOHERISH)_010	River	Cork County Council		Good	Good	Good	Good	2021 or earlier	Not at risk					View WB Page	View WB on EPA Water Map
19	IE_SW_19F020100	FOHERISH_010	River	Cork County Council		High	Good	High	High	2021 or earlier	Review			Keel Foherish	LAWPRO, Restoration	View WB Page	View WB on EPA Water Map
19	IE_SW_19F020300	FOHERISH_020	River	Cork County Council		Good	Good	High	High	2021 or earlier	Not at risk			Keel Foherish	LAWPRO, Restoration	View WB Page	View WB on EPA Water Map
19	IE_SW_19F020400	FOHERISH_030	River	Cork County Council		Good	Good	Good	Good	2021 or earlier	Not at risk					View WB Page	View WB on EPA Water Map
19	IE_SW_19F020600	FOHERISH_040	River	Cork County Council		High	High	High	High	2021 or earlier	Not at risk					View WB Page	View WB on EPA Water Map
19	IE_SW_19F110740	Farrannamanagh_010	River	Cork County Council	SPA;	Unassigned	Moderate	Good	Good	2021 or earlier	Not at risk					View WB Page	View WB on EPA Water Map
19	IE_SW_19G010200	GLASHABOY (LOUGH MAHON)_010	River	Cork County Council		Good	Moderate	Moderate	Good	2022-2027	At risk	Nutrients, Organic	Ag			View WB Page	View WB on EPA Water Map
19	IE_SW_19G010400	GLASHABOY (LOUGH MAHON)_020	River	Cork County Council		Good	Good	Good	Good	2021 or earlier	Review					View WB Page	View WB on EPA Water Map
19	IE_SW_19G010600	GLASHABOY (LOUGH MAHON)_030	River	Cork County Council	DWPA; NSA;	High	Good	Good	Good	2021 or earlier	Not at risk					View WB Page	View WB on EPA Water Map
19	IE_SW_19G030200	GARRANE (LEE)_010	River	Cork County Council		Good	Good	Good	Good	2021 or earlier	Not at risk			Keel Foherish	LAWPRO, Restoration	View WB Page	View WB on EPA Water Map
19	IE_SW_19G040700	GLASHEEN (Cork City)_010	River	Cork City Council	NSA;	Unassigned	Poor	Poor	Good	2022-2027	At risk	Nutrients	Unknown			View WB Page	View WB on EPA Water Map
19	IE_SW_19G840560	Gortavadda_010	River	Cork County Council	SAC; SPA;	Unassigned	Moderate	Good	Good	2021 or earlier	Review					View WB Page	View WB on EPA Water Map
19	IE_SW_19G880990	GLENNAMOUGHT TRIB BRIDE_010	River	Cork County Council		Unassigned	Moderate	Moderate	Good	2022-2027	Review			Bride (Cork City)	LAWPRO, Restoration	View WB Page	View WB on EPA Water Map
19	IE_SW_19H050470	HILLTOWN_010	River	Cork County Council		Unassigned	Moderate	Good	Good	2021 or earlier	Review					View WB Page	View WB on EPA Water Map
19	IE_SW_19K020200	KEEL_010	River	Cork County Council		Poor	Good	Good	Good	2021 or earlier	Review			Keel Foherish	LAWPRO, Restoration	View WB Page	View WB on EPA Water Map
19	IE_SW_19K580980	KILLMACAHILL_010	River	Cork County Council	SPA;	Unassigned	Moderate	Good	Good	2021 or earlier	Review					View WB Page	View WB on EPA Water Map
19	IE_SW_19K620850	KILNAGLERY_010	River	Cork County Council	SPA;	Unassigned	Poor	Good	Good	2021 or earlier	Review					View WB Page	View WB on EPA Water Map
19	IE_SW_19K630910	KNOCKNAMADDEREE_010	River	Cork County Council	SAC; SPA; NSA;	Unassigned	Poor	Good	Good	2021 or earlier	Review					View WB Page	View WB on EPA Water Map
19	IE_SW_19L010100	LANEY_010	River	Cork County Council		High	High	Good	High	2022-2027	At risk	Morphological	HYMO			View WB Page	View WB on EPA Water Map
19	IE_SW_19L010200	LANEY_020	River	Cork County Council		High	High	High	High	2021 or earlier	Not at risk					View WB Page	View WB on EPA Water Map
19	IE_SW_19L010400	LANEY_030	River	Cork County Council		High	High	High	High	2021 or earlier	Not at risk					View WB Page	View WB on EPA Water Map
19	IE_SW_19L010500	LANEY_040	River	Cork County Council		High	Good	High	High	2021 or earlier	Review			Carrigdrohid	LAWPRO, Restoration	View WB Page	View WB on EPA Water Map

19	IE_SW_19L030040	LEE (CORK)_010	River	Cork County Council	Fish;	Good	High	Good	Good	2021 or earlier	Not at risk			Allua	LAWPRO, Restoration	View WB Page	View WB on EPA Water Map
19	IE_SW_19L030100	LEE (CORK)_020	River	Cork County Council	Fish;	Moderate	Moderate	High	Good	2021 or earlier	Not at risk			Allua	LAWPRO, Restoration	View WB Page	View WB on EPA Water Map
19	IE_SW_19L030200	LEE (CORK)_030	River	Cork County Council	DWPA; Fish;	Good	Good	Good	Good	2021 or earlier	Not at risk			Allua	LAWPRO, Restoration	View WB Page	View WB on EPA Water Map
19	IE_SW_19L030300	LEE (CORK)_040	River	Cork County Council	Fish;	High	High	Good	High	2022-2027	At risk	Morphological	HYMO	Carrigdrohid	LAWPRO, Restoration	View WB Page	View WB on EPA Water Map
19	IE_SW_19L030360	LEE (CORK)_050	River	Cork County Council	SAC; Fish; SPA;	Unassigned	Good	Moderate	Good	2022-2027	At risk	Sediment, Nutrients	Ag, HYMO	Carrigdrohid	LAWPRO, Restoration	View WB Page	View WB on EPA Water Map
19	IE_SW_19L030400	LEE (CORK)_060	River	Cork County Council	Fish;	Unassigned	Good	High	Good	2021 or earlier	Not at risk			Carrigdrohid	LAWPRO, Restoration	View WB Page	View WB on EPA Water Map
19	IE_SW_19L030500	LEE (CORK)_070	River	Cork County Council		Unassigned	Good	Good	Good	2021 or earlier	Not at risk					View WB Page	View WB on EPA Water Map
19	IE_SW_19L030600	LEE (CORK)_080	River	Cork County Council	DWPA; Fish;	Moderate	Moderate	Good	Good	2021 or earlier	Not at risk			Farran	NFGWS, Restoration	View WB Page	View WB on EPA Water Map
19	IE_SW_19L030800	LEE (CORK)_090	River	Cork County Council	DWPA; Fish; NSA;	Moderate	Moderate	Good	Good	2021 or earlier	Not at risk			Bride (Lee)	LAWPRO, Restoration	View WB Page	View WB on EPA Water Map
19	IE_SW_19M010200	MARTIN_010	River	Cork County Council		Poor	Poor	Moderate	Good	2022-2027	At risk	Nutrients, Organic	Ag	Martin	LAWPRO, Restoration	View WB Page	View WB on EPA Water Map
19	IE_SW_19M010300	MARTIN_020	River	Cork County Council		Good	Good	Good	Good	2021 or earlier	Not at risk			Martin	LAWPRO, Restoration	View WB Page	View WB on EPA Water Map
19	IE_SW_19M010400	MARTIN_030	River	Cork County Council		High	Good	Good	High	2022-2027	At risk	Hydrological, Morphological	HYMO	Martin	LAWPRO, Restoration	View WB Page	View WB on EPA Water Map
19	IE_SW_19M010600	MARTIN_040	River	Cork County Council		Moderate	Moderate	Moderate	Good	2022-2027	At risk	Nutrients, Organic	UR	Martin	LAWPRO, Restoration	View WB Page	View WB on EPA Water Map
19	IE_SW_19M290850	MOANLAHAN_010	River	Cork County Council		Unassigned	Moderate	Moderate	Good	2022-2027	Review			Womanagh	LAWPRO, Restoration	View WB Page	View WB on EPA Water Map
19	IE_SW_19M300900	MONEYGURNEY_010	River	Cork County Council	SPA; NSA;	Unassigned	Moderate	Good	Good	2021 or earlier	Review					View WB Page	View WB on EPA Water Map
19	IE_SW_19O010400	OWENBOY (CORK)_010	River	Cork County Council		Good	Moderate	Moderate	Good	2022-2027	At risk	Nutrients	Ag	Owenboy	LAWPRO, Restoration	View WB Page	View WB on EPA Water Map
19	IE_SW_19O010800	OWENBOY (CORK)_020	River	Cork County Council		Poor	Moderate	Moderate	Good	2022-2027	At risk	Sediment, Nutrients, Organic	Ag, HYMO	Owenboy	LAWPRO, Restoration	View WB Page	View WB on EPA Water Map
19	IE_SW_19O011000	OWENBOY (CORK)_030	River	Cork County Council		Unassigned	Moderate	Moderate	Good	2022-2027	Review			Owenboy	LAWPRO, Restoration	View WB Page	View WB on EPA Water Map
19	IE_SW_19O011400	OWENBOY (CORK)_040	River	Cork County Council		Poor	Moderate	Moderate	Good	2022-2027	At risk	Morphological, Nutrients	HYMO, Ag	Owenboy	LAWPRO, Restoration	View WB Page	View WB on EPA Water Map
19	IE_SW_19O030050	OWENNACURRA_010	River	Cork County Council		High	High	Good	High	2022-2027	At risk	Morphological	HYMO			View WB Page	View WB on EPA Water Map
19	IE_SW_19O030220	OWENNACURRA_020	River	Cork County Council		High	High	High	High	2021 or earlier	Not at risk					View WB Page	View WB on EPA Water Map
19	IE_SW_19O030400	OWENNACURRA_030	River	Cork County Council		Good	Good	Good	Good	2021 or earlier	Not at risk					View WB Page	View WB on EPA Water Map
19	IE_SW_19O030500	OWENNACURRA_040	River	Cork County Council	DWPA; NSA;	Moderate	Moderate	Moderate	Good	2022-2027	At risk	Nutrients, Organic	UR	Middleton	LAWPRO, Restoration	View WB Page	View WB on EPA Water Map
19	IE_SW_19R450050	Rathcoola_010	River	Cork County Council		Moderate	Good	Good	Good	2021 or earlier	Not at risk					View WB Page	View WB on EPA Water Map
19	IE_SW_19S010100	SHOURNAGH_010	River	Cork County Council		Good	Good	Good	Good	2021 or earlier	Not at risk			Shournagh	LAWPRO, Restoration	View WB Page	View WB on EPA Water Map
19	IE_SW_19S010200	SHOURNAGH_020	River	Cork County Council		High	Good	High	High	2021 or earlier	Not at risk			Shournagh	LAWPRO, Restoration	View WB Page	View WB on EPA Water Map
19	IE_SW_19S010300	SHOURNAGH_030	River	Cork County Council		High	Moderate	Moderate	High	2022-2027	At risk	Nutrients	UR, UWW	Shournagh	LAWPRO, Restoration	View WB Page	View WB on EPA Water Map
19	IE_SW_19S010500	SHOURNAGH_040	River	Cork County Council		High	Moderate	Good	High	2022-2027	At risk	Nutrients	UR, Ag, DWTS	Shournagh	LAWPRO, Restoration	View WB Page	View WB on EPA Water Map
19	IE_SW_19S020100	SULLANE_010	River	Cork County Council		High	Good	Good	High	2022-2027	At risk	Morphological	HYMO			View WB Page	View WB on EPA Water Map
19	IE_SW_19S020170	SULLANE_020	River	Cork County Council	SAC;	High	Good	Good	High	2022-2027	At risk	Hydrological, Morphological	HYMO			View WB Page	View WB on EPA Water Map
19	IE_SW_19S020200	SULLANE_030	River	Cork County Council		High	High	High	High	2021 or earlier	Not at risk					View WB Page	View WB on EPA Water Map
19	IE_SW_19S020300	SULLANE_040	River	Cork County Council		Good	Good	High	High	2021 or earlier	Not at risk					View WB Page	View WB on EPA Water Map
19	IE_SW_19S020400	SULLANE_050	River	Cork County Council		High	High	High	High	2021 or earlier	Not at risk					View WB Page	View WB on EPA Water Map
19	IE_SW_19S020480	SULLANE_060	River	Cork County Council	DWPA;	Good	Good	Good	Good	2021 or earlier	Not at risk			Carrigdrohid	LAWPRO, Restoration	View WB Page	View WB on EPA Water Map
19	IE_SW_19S270790	SHANAGARRY_010	River	Cork County Council	SPA;	Unassigned	Moderate	Good	Good	2021 or earlier	Review					View WB Page	View WB on EPA Water Map
19	IE_SW_19S290720	SCHOOLGARDENS_010	River	Cork County Council		Unassigned	Moderate	Good	Good	2021 or earlier	Not at risk			Kilcreden	NFGWS, Protection	View WB Page	View WB on EPA Water Map
19	IE_SW_19T010100	TEMPLEBODAN_010	River	Cork County Council		Good	High	Good	Good	2021 or earlier	Not at risk					View WB Page	View WB on EPA Water Map
19	IE_SW_19T020700	TOON_010	River	Cork County Council		Good	Good	Good	Good	2021 or earlier	Not at risk					View WB Page	View WB on EPA Water Map
19	IE_SW_19T050890	TWO POT (Cork City)_010	River	Cork County Council		Unassigned	Moderate	Moderate	Good	2022-2027	At risk	Nutrients	Unknown			View WB Page	View WB on EPA Water Map
19	IE_SW_19T250870	Tibbotstown_010	River	Cork County Council	DWPA; SAC; SPA; NSA;	Unassigned	Moderate	Good	Good	2021 or earlier	Review					View WB Page	View WB on EPA Water Map
19	IE_SW_19W011000	WOMANAGH_010	River	Cork County Council	DWPA;	Moderate	Moderate	Moderate	Good	2022-2027	At risk	Morphological, Nutrients, Organic	Unknown, Ag, HYMO	Womanagh	LAWPRO, Restoration	View WB Page	View WB on EPA Water Map
19	IE_SW_19W011300	WOMANAGH_020	River	Cork County Council		Good	Moderate	Moderate	Good	2022-2027	At risk	Nutrients, Organic	Ag, UWW	Womanagh	LAWPRO, Restoration	View WB Page	View WB on EPA Water Map

19	IE_SW_19W011400	WOMANAGH_030	River	Cork County Council	SAC; SPA;	Unassigned	Moderate	Good	Good	2021 or earlier	Review			Womanagh	LAWPRO, Restoration	View WB Page	View WB on EPA Water Map
19	IE_SW_030_0100	Womanagh Estuary	Transitional	Cork County Council	SAC; SPA;	Unassigned	Moderate	Moderate	Good	2022-2027	Review					View WB Page	View WB on EPA Water Map
19	IE_SW_060_0100	Rostellan Lake	Transitional	Cork County Council	SPA;	Unassigned	Bad	Moderate	Good	2022-2027	Review					View WB Page	View WB on EPA Water Map
19	IE_SW_060_0200	Cuskinny Lake	Transitional	Cork County Council		Unassigned	Bad	Bad	Good	2022-2027	Review					View WB Page	View WB on EPA Water Map
19	IE_SW_060_0300	North Channel Great Island	Transitional	Cork County Council	SAC; SPA; SF; NSA;	Good	Moderate	Moderate	Good	2022-2027	At risk	Nutrients	Ag			View WB Page	View WB on EPA Water Map
19	IE_SW_060_0400	Owenacurra Estuary	Transitional	Cork County Council	SAC; SPA; NSA;	Moderate	Moderate	Moderate	Good	2022-2027	At risk	Morphological, Nutrients, Organic	UWW, UR	Middleton	LAWPRO, Restoration	View WB Page	View WB on EPA Water Map
19	IE_SW_060_0600	Slatty Bridge, Fota Island	Transitional	Cork County Council	SAC; SPA;	Unassigned	Moderate	Unassigned	Good	Unknown	Review					View WB Page	View WB on EPA Water Map
19	IE_SW_060_0700	Lough Mahon (Harper's Island)	Transitional	Cork County Council	SAC; SPA; NSA;	Moderate	Moderate	Moderate	Good	2022-2027	At risk	Nutrients, Organic, UnknownImpactType	UR, UWW			View WB Page	View WB on EPA Water Map
19	IE_SW_060_0750	Lough Mahon	Transitional	Cork County Council	SAC; SPA; NSA;	Moderate	Moderate	Moderate	Good	2022-2027	At risk	Nutrients, Organic	UWW			View WB Page	View WB on EPA Water Map
19	IE_SW_060_0800	Glashaboy Estuary	Transitional	Cork County Council	SPA; NSA;	Poor	Good	Bad	Good	2022-2027	At risk	Nutrients, Organic, UnknownImpactType	UR, Ag			View WB Page	View WB on EPA Water Map
19	IE_SW_060_0900	Lee (Cork) Estuary Lower	Transitional	Cork City Council	SPA; NSA;	Moderate	Moderate	Moderate	Good	2022-2027	At risk	Nutrients, Organic, UnknownImpactType	UR, UWW			View WB Page	View WB on EPA Water Map
19	IE_SW_060_0950	Lee (Cork) Estuary Upper	Transitional	Cork City Council	NSA;	Moderate	Moderate	Moderate	Good	2022-2027	At risk	Nutrients, Organic	UWW, UR			View WB Page	View WB on EPA Water Map
19	IE_SW_060_1100	Lough Beg / Curraghbinny	Transitional	Cork County Council	SPA;	Unassigned	Poor	Good	Good	2021 or earlier	Review					View WB Page	View WB on EPA Water Map
19	IE_SW_060_1200	Owenboy Estuary	Transitional	Cork County Council	SPA;	Unassigned	Moderate	Moderate	Good	2022-2027	At risk	Nutrients	Ag			View WB Page	View WB on EPA Water Map