

**Cycle 3**

**HA 18 Blackwater (Munster) Catchment Report  
May 2024**

Introduction

Water Quality  
Summary

High Status  
Objectives

Water Quality  
Changes

WFD Risk

Significant  
Pressures

Action

Summary  
Information

# Introduction

This report provides an overview of the water quality in the Blackwater (Munster) Catchment and the pressures impacting on water quality. This report is based on data up to 2021. The latest water quality data, dashboards and maps throughout this report are available on [catchments.ie](https://catchments.ie) and [EPA Water Map](https://epa.maps.ie).

The Blackwater (Munster) Catchment includes the area drained by the River Blackwater and all streams entering tidal water between East Point and Knockaverry, Youghal, Co. Cork, draining a total area of 3,310km<sup>2</sup>. The largest urban centre in the catchment is Mallow. The other main urban centres in this catchment are Fermoy, Mitchelstown, Youghal, Kanturk and Millstreet.

The Blackwater (Munster) Catchment is divided into 28 subcatchments and has 162 surface water bodies and 34 groundwater bodies.

[View the Blackwater \(Munster\) Catchment on the EPA Water Map](https://epa.maps.ie)

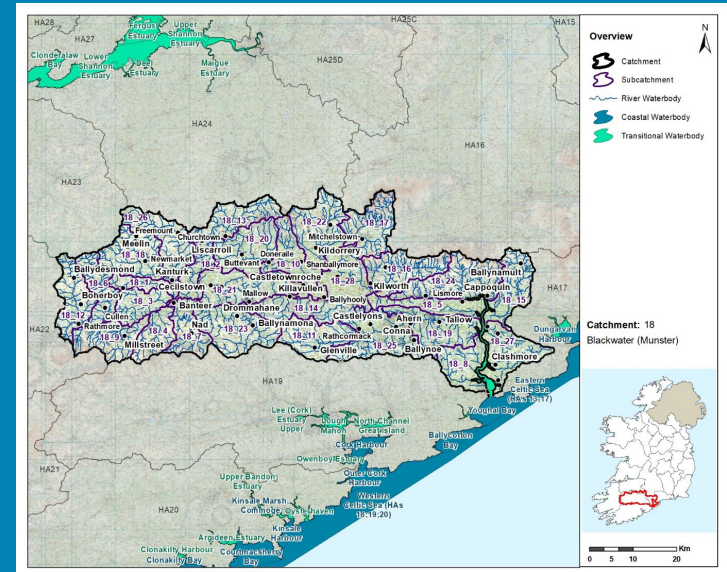
## Previous Catchment Assessments

Previous catchment assessments, which provide additional historic context and information, are archived on [catchments.ie](https://catchments.ie):

- [Cycle 2 Catchment Assessments – published September 2018](#)
- [Cycle 3 Draft Catchment Assessments – published September 2021](#)

## Online Dashboards

Links to online dashboards are provided in this report – these numbers may vary from those in this document as time progress and the online dashboards are updated based on the latest data and scientific assessments.



Overview of Subcatchments in the Blackwater (Munster) Catchment

# Water Quality Summary

Introduction

Water Quality Summary

High Status Objectives

Water Quality Changes

WFD Risk

Significant Pressures

Action

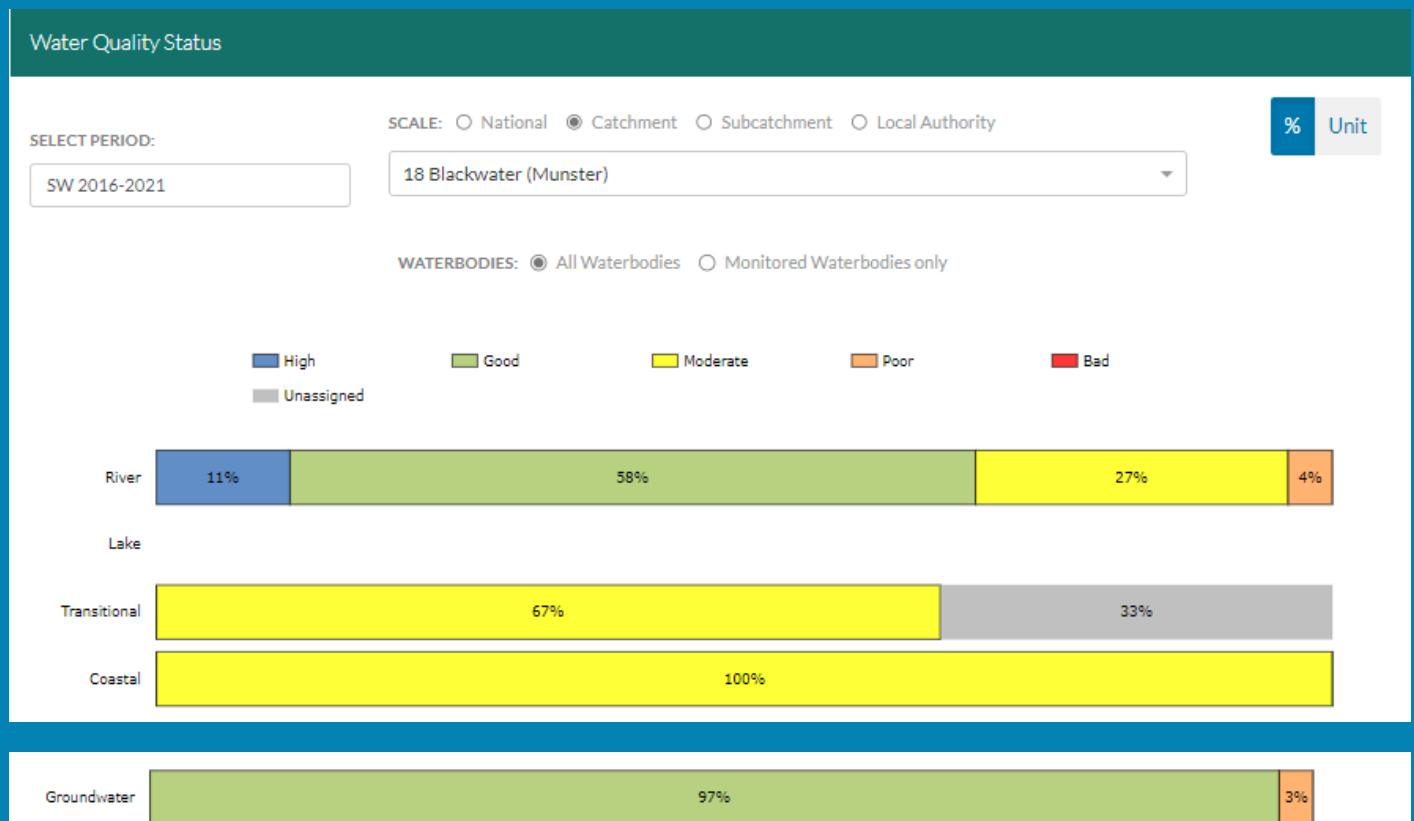
Summary Information

The dashboard below provides a breakdown of water quality status for surface and groundwater bodies in the Blackwater (Munster) Catchment.

A total of 68% of surface waterbodies were at Good or High Ecological Status in the 2016-2021 monitoring period. Ninety-seven percent of groundwater bodies were at Good status.

**Go to EPA Water Maps for WFD Status**

[EPA Water Map](#)



Water quality status 2016-2021 for the Blackwater (Munster) Catchment.  
View Online Dashboard: <https://www.catchments.ie/data/#/dashboard/waterquality>

# High Status Objective Waterbodies

Introduction

High status waters are prioritised for protection and action.

There are 32 waterbodies with a **High Ecological Status Objective (HSO)** in the Blackwater (Munster) Catchment, with 20 currently not meeting their environmental objective of High.

Water Quality Summary

Grants for septic tank upgrades may be available in high status objective catchment areas - you can learn more and check your Eircode for eligibility here: <https://www.gov.ie/en/publication/6cc1e-domestic-waste-water-treatment-systems-septic-tanks>

[View HSO river waterbodies in this catchment.](#)

See *Status and Risk / High Status Objective* for other waterbody types.

High Status Objectives

Water Quality Changes

WFD Risk

Significant Pressures

Action

Summary Information

Water Quality Status - High Status Objective Waterbodies

SCALE:  Catchment  Local Authority

SELECT TYPE:

	SW 2007-2009	SW 2010-2012	SW 2010-2015	SW 2013-2018	SW 2016-2021
ALLOW_030 (River)	High	High	High	Good	High
ALLOW_050 (River)	High	High	High	Good	Good
ARAGLIN (BLACKWATER)_040 (River)	High	High	Good	Good	Good
BEHANAGH_010 (River)	High	High	High	High	High
BLACKWATER (MUNSTER)_050 (River)	Good	High	High	High	Good
BLACKWATER (MUNSTER)_060 (River)	High	High	Good	Good	Good
BLACKWATER (MUNSTER)_070 (River)	Good	Good	High	Good	Good
BLACKWATER (MUNSTER)_080 (River)	High	High	Good	Good	Good
BLACKWATER (MUNSTER)_090 (River)	High	High	Good	Good	Good
BLACKWATER (MUNSTER)_110 (River)	High	High	Good	Good	High
CLYDA_010 (River)	High	High	Good	Good	Moderate
CLYDA_020 (River)	High	High	High	High	Good
DALUA_030 (River)	High	High	Good	Good	Good

# High Status Objective Waterbodies (continued)

Introduction

Water Quality Summary

High Status Objectives

Water Quality Changes

WFD Risk

Significant Pressures

Action

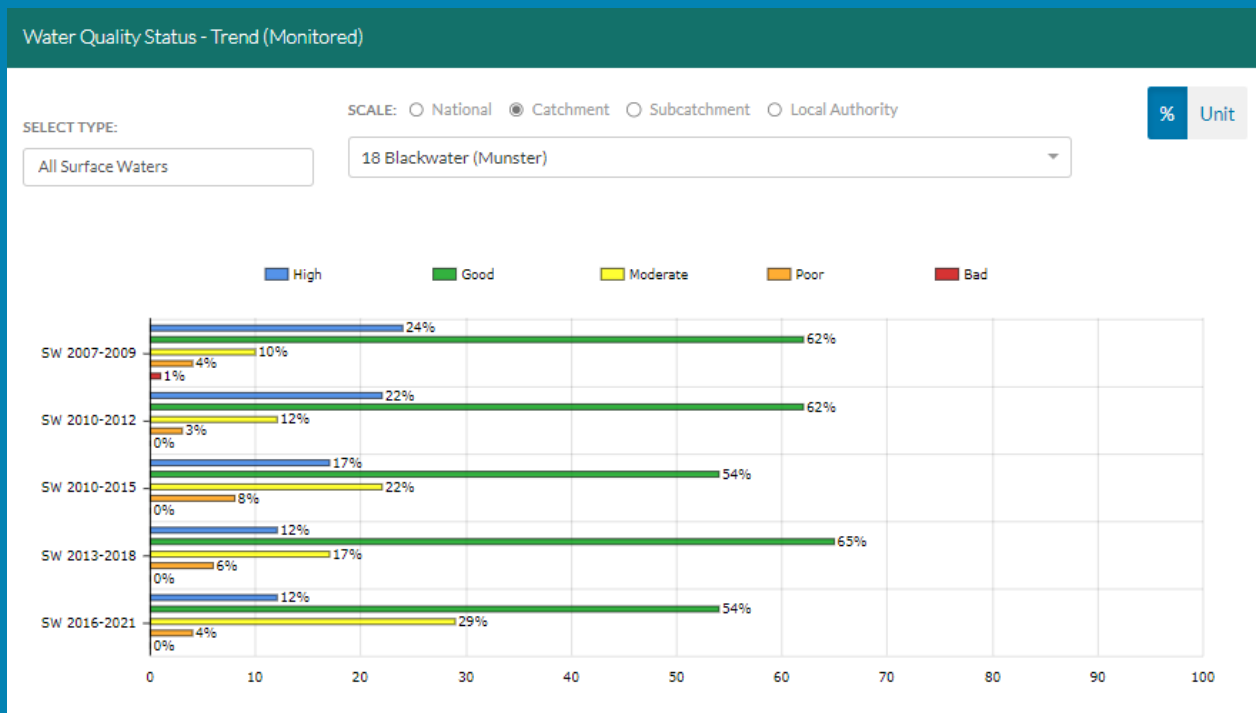
Summary Information

FARNANE_010 (River)	Good	Good	High	High	High
FUNSHION_050 (River)	High	High	Good	Good	Good
GLEN (BANTEER)_010 (River)	High	High	High	High	High
GLEN (BANTEER)_020 (River)	Unassigned	Unassigned	High	High	High
GLEN (BANTEER)_030 (River)	High	High	High	High	High
GLENAKEEFE_010 (River)	Unassigned	Unassigned	High	High	Good
GLENAKEEFE_020 (River)	High	High	High	High	High
GLENNAFALLIA_010 (River)	High	High	Good	Good	High
GLENSHELANE_010 (River)	High	High	High	High	Moderate
MONAVUGGA_010 (River)	Good	High	High	High	Good
NAD_010 (River)	High	High	High	High	High
OGEEN_010 (River)	High	High	Moderate	Good	Good
OGEEN_020 (River)	High	High	Moderate	Good	High
OWENANARE_020 (River)	High	Good	High	Good	High
OWENBAUN (RATHCOOL)_020 (River)	High	High	Good	Good	Good
OWENNASHAD_010 (River)	High	High	High	Good	Good
OWENNASHAD_020 (River)	High	High	Good	Good	Good
OWENTARAGLIN_030 (River)	High	High	Good	Good	Good
OWENTARAGLIN_040 (River)	High	Unassigned	High	High	Good

Water quality status for High Ecological Status Objective waterbodies.  
View Online Dashboard: <https://www.catchments.ie/data/#/dashboard/waterquality>

# Water Quality Changes

Below illustrates the changes in ecological status in monitored surface waterbodies over the last five monitoring cycles in the Blackwater (Munster) Catchment. Nationally while there have been improvements in some waterbodies, these have been offset by declines elsewhere.



Ecological status trends for monitored surface waterbodies over the last five monitoring cycles in the Blackwater (Munster) Catchment. **View online dashboard:** <https://www.catchments.ie/data/#/dashboard/waterquality>

A total of 196 (64%) waterbodies are currently meeting their environmental objective of Good or High Ecological Status.

	Total	Achieving Environmental Objectives (2016-2021)	High Status Environmental Objectives Waterbodies	Achieving High Status Environmental Objectives (2016-2021)
<b>Rivers</b>	158	92 (58%)	32	12 (38%)
<b>Canals</b>	-	-	-	-
<b>Lakes</b>	-	-	-	-
<b>Transitional</b>	3	0 (0%)	-	-
<b>Coastal</b>	1	0 (0%)	-	-
<b>Groundwater</b>	34	33 (97%)	-	-

Introduction

Water Quality Summary

High Status Objectives

Water Quality Changes

WFD Risk

Significant Pressures

Action

Summary Information

# WFD Risk

Introduction

Water Quality Summary

High Status Objectives

Water Quality Changes

WFD Risk

Significant Pressures

Action

Summary Information

A total of 73 (37%) waterbodies are *At Risk* of not meeting their environmental objective in the Blackwater (Munster) Catchment, while 26 (13%) are under *Review* and 97 (50%) are *Not At Risk*.

Go to [EPA Water Map](#) to see WFD Risk for this catchment



WFD Risk for the Blackwater (Munster) Catchment based on 2016-2021 data.  
View Online Dashboard: <https://www.catchments.ie/data/#/dashboard/waterquality>

There are currently no heavily modified water bodies (HMWBs) in the Blackwater (Munster) Catchment.

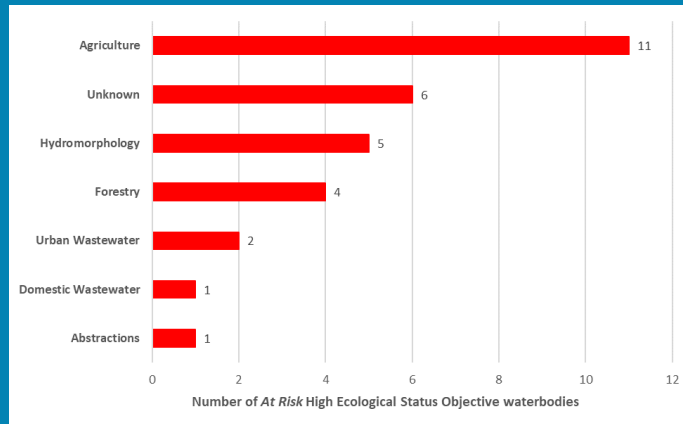
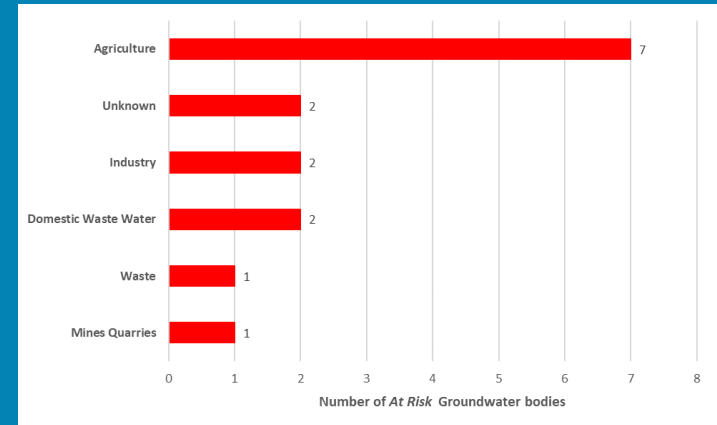
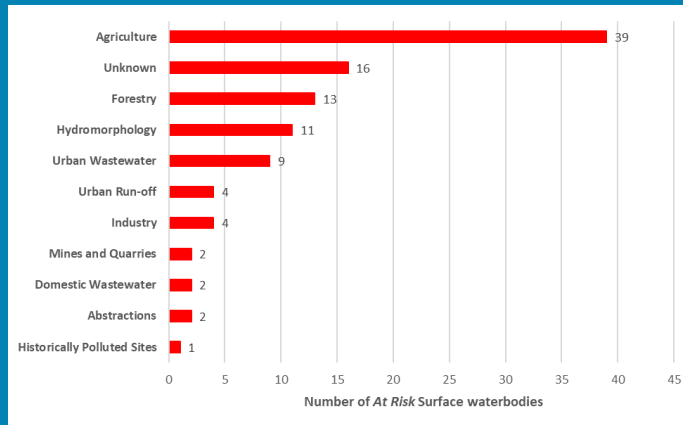
There are no artificial waterbodies in the Blackwater (Munster) Catchment.

The [EPA's characterisation outcome report](#) has more information on WFD Risk

Click [here](#) for more information on significant pressures

## Significant Pressures driving risk

Significant pressure types impacting the 63 *At Risk* surface waterbodies and 10 groundwater bodies are broken down in the figures below, including significant pressure information for the 19 *At Risk* High Ecological Status Objective waterbodies.



The issues driven by these pressures are mainly nutrient pollution, altered morphological condition (habitat) and organic pollution impacts for surface water and nutrient pollution and chemical quality diminution for surface water impact for groundwaters. For more information, see <https://www.catchments.ie/data/#/dashboard/pressure?k=i351zs>.

**Go to the Summary Information section to get significant pressure and issue data for At Risk waterbodies within the Blackwater (Munster) Catchment.**

Introduction

Water Quality Summary

High Status Objectives

Water Quality Changes

WFD Risk

Significant Pressures

Action

Summary Information

Introduction

Water Quality  
Summary

High Status  
Objectives

Water Quality  
Changes

WFD Risk

Significant  
Pressures

Action


Summary  
Information

## Significant Pressures


Agriculture is the top significant pressure impacting 64% of the 73 *At Risk* waterbodies within the Blackwater (Munster) Catchment, followed by 25% impacted by Forestry and 15% by Hydromorphological Pressures.


River Waterbody

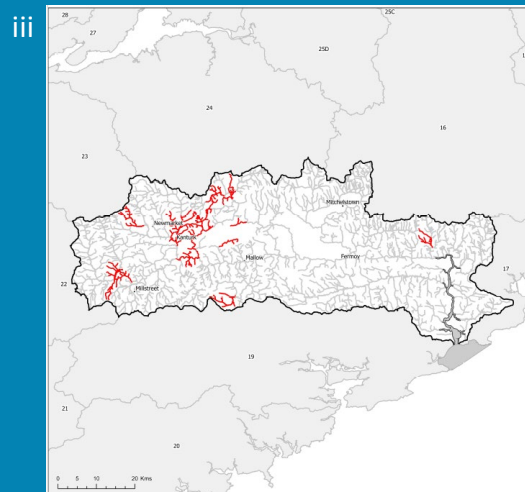
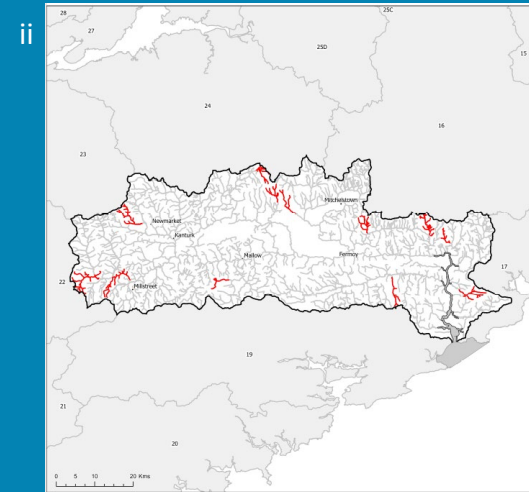
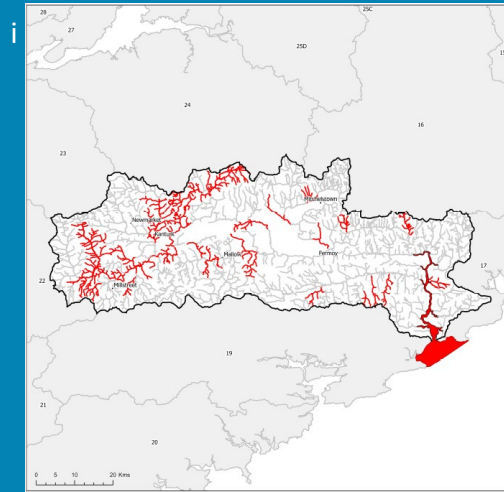
 Significant Pressure  
in Waterbody *At Risk*

 Other Waterbodies

Lake, Coastal and  
Transitional Waterbody

 Significant Pressure  
in Waterbody *At Risk*

 Other Waterbodies



*The catchments.ie dashboards will  
show all significant pressures  
identified for this catchment.*

[www.catchments.ie/data/#/dashboard/pressure](http://www.catchments.ie/data/#/dashboard/pressure)

*Go to the [EPA Water Maps](#) for the  
locations of all significant pressure  
types identified for this catchment*

*Locations of At Risk surface waterbodies impacted by i) Agriculture, ii) Forestry and iii) Hydromorphological Pressures.*

Introduction

Water Quality  
Summary

High Status  
Objectives

Water Quality  
Changes

WFD Risk

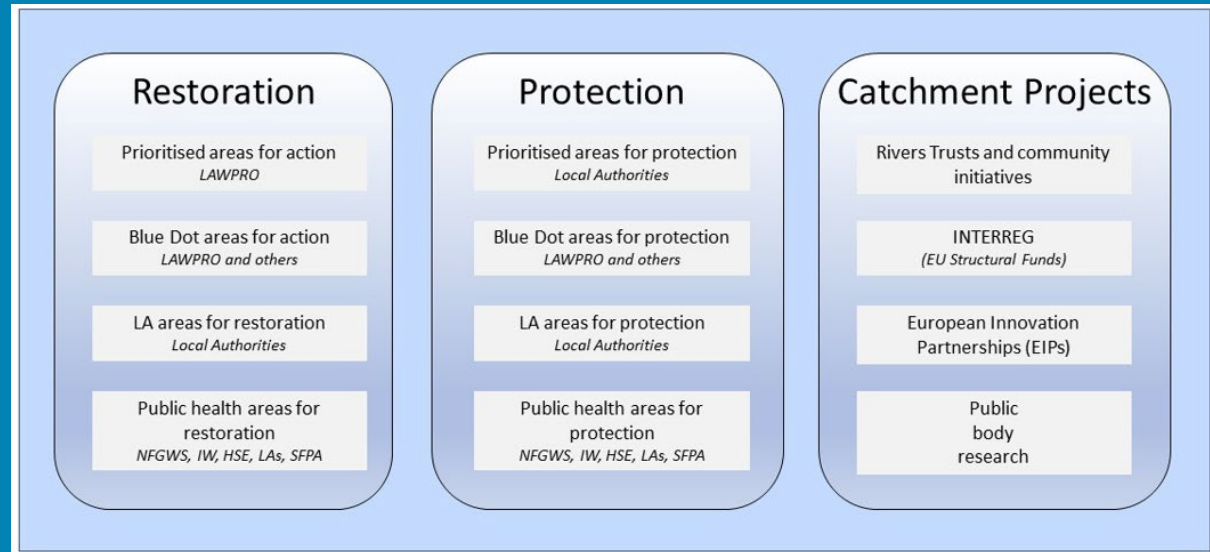
Significant  
Pressures

Action

Summary  
Information

## Priority Areas for Action

A number of waterbodies have been prioritised through the selection of Areas for Action. There were eight Priority Areas for Action identified for the second river basin management planning cycle in the Blackwater (Munster) Catchment. This has increased to a total of 18 Areas for Restoration, one Area for Protection and two Catchment Projects for the third cycle. ***Go to the summary information section to get Area for Action information for waterbodies within the Blackwater (Munster) Catchment.***



*Types of Areas for Action under the third cycle River Basin Management Plan*

- View the current progress of Areas for Action and Summary Reports completed by LAWPRO, on catchments.ie and the EPA Water Map:
  - <https://www.catchments.ie/data/#/areaforaction>
  - [https://gis.epa.ie/EPAMaps/default?easting=?&northing=?&lid=EPA:WFD\\_AreasForAction](https://gis.epa.ie/EPAMaps/default?easting=?&northing=?&lid=EPA:WFD_AreasForAction)
- LAWPRO have also published detailed desktop studies on Prioritised Areas for Action (PAAs) which are available their website: <https://lawaters.ie/desktop-studies/>
- Information on Areas for Action for the second cycle is available in Cycle 2 Catchment Assessments which have been archived on catchments.ie:  
<https://www.catchments.ie/download/cycle-2-catchment-assessments-published-september-2018/>

Introduction

Water Quality  
Summary

High Status  
Objectives

Water Quality  
Changes

WFD Risk

Significant  
Pressures

Action

Summary  
Information

## Summary information for all waterbodies in the Blackwater (Munster) Catchment

The next page provides a table with a breakdown of key information for all waterbodies in this catchment. The key is provided below. Additional information for each waterbody is available on <https://www.catchments.ie/data>, including a breakdown of status, a monitoring schedule for monitored waterbodies and downloadable chemistry results, where available.

<b>Protected Area categories</b>	BW: Bathing Water DW: Drinking Water Fish: Salmonid Waters NSA: Nutrient Sensitive Areas SAC: Special Area of Conservation, Natura 2000 (water dependent habitats and species) SF: Shellfish Area SPA: Special Area of Protection, Natura 2000 (water dependent habitat and species)
<b>Significant pressure* types categories</b>  <i>* For At Risk waterbodies only</i>	Ab: Abstractions Ag: Agriculture Aq: Aquaculture At: Atmospheric DWW: Domestic Wastewater For: Forestry HPS: Historically polluted sites HYMO: Hydromorphology Ind: Industry IS: Invasive Species M+Q: Mines and Quarries Peat: Peat Drainage and Extraction UR: Urban Run-Off UWW: Urban Wastewater Was: Waste WT: Water Treatment

Catchment Code	Waterbody (WB) Code	WB Name	WB Type	Local Authority	Protected Area	Status 10-15	Status 13-18	Status 16-21	Environmental Objective	Environmental Objective Date	WFD Risk 16-21	Significant Issue(s)	Significant Pressure(s)	Area for Action (AFA)	AFA (lead, type)	Link to WB page on catchments.ie	Link to WB on EPA Water Map
17, 18, 19	IE_SW_020_0000	Youghal Bay	Coastal	Cork County Council	BW; SAC; SPA; SF; NSA;	Good	Moderate	Moderate	Good	2022-2027	At risk	Nutrients, Organic	Ag			<a href="#">View WB Page</a>	<a href="#">View WB on EPA Water Map</a>
17, 18	IE_SE_G_014	Ballyknock	Groundwater	Waterford City & County Council	DWPA; SAC	Good	Good	Good	Good	2021 or earlier	Not at risk					<a href="#">View WB Page</a>	<a href="#">View WB on EPA Water Map</a>
15, 16, 18	IE_SE_G_030	Carrick-on-Suir	Groundwater	Waterford City & County Council	DWPA; SAC	Good	Good	Good	Good	2021 or earlier	At risk	ChemicalQualityDiminution ForSW, Nutrients	DWTS, For, Ag			<a href="#">View WB Page</a>	<a href="#">View WB on EPA Water Map</a>
15, 16, 18	IE_SE_G_040	Clonmel	Groundwater	Tipperary County Council	DWPA; SAC	Good	Good	Good	Good	2021 or earlier	At risk	Nutrients	Ag, Unknown			<a href="#">View WB Page</a>	<a href="#">View WB on EPA Water Map</a>
17, 18	IE_SE_G_052	Dungarvan	Groundwater	Waterford City & County Council	DWPA; SAC	Good	Good	Good	Good	2021 or earlier	Not at risk					<a href="#">View WB Page</a>	<a href="#">View WB on EPA Water Map</a>
17, 18	IE_SE_G_073	Helvick Head	Groundwater	Waterford City & County Council	DWPA; SAC	Good	Good	Good	Good	2021 or earlier	Not at risk					<a href="#">View WB Page</a>	<a href="#">View WB on EPA Water Map</a>
16, 17, 18	IE_SE_G_085	Kilrion	Groundwater	Waterford City & County Council	DWPA; SAC	Good	Good	Good	Good	2021 or earlier	Not at risk					<a href="#">View WB Page</a>	<a href="#">View WB on EPA Water Map</a>
16, 18, 24	IE_SE_G_087	Knockaskallen	Groundwater	Tipperary County Council	DWPA; SAC	Good	Good	Good	Good	2021 or earlier	Not at risk					<a href="#">View WB Page</a>	<a href="#">View WB on EPA Water Map</a>
16, 17, 18	IE_SE_G_154	Comeragh	Groundwater	Waterford City & County Council	DWPA; SAC	Good	Good	Good	Good	2021 or earlier	Not at risk					<a href="#">View WB Page</a>	<a href="#">View WB on EPA Water Map</a>
18, 22, 23, 24	IE_SH_G_001	Abbeyfeale	Groundwater	Kerry County Council	DWPA; SAC	Good	Good	Good	Good	2021 or earlier	Not at risk					<a href="#">View WB Page</a>	<a href="#">View WB on EPA Water Map</a>
18, 23, 24	IE_SH_G_030	Ballylongford	Groundwater	Limerick City & County Council	DWPA; SAC	Good	Good	Good	Good	2021 or earlier	At risk	ChemicalQualityDiminution ForSW, Nutrients	DWTS, For, Ag			<a href="#">View WB Page</a>	<a href="#">View WB on EPA Water Map</a>
16, 18, 24	IE_SH_G_055	Charleville	Groundwater	Limerick City & County Council	DWPA; SAC	Good	Good	Good	Good	2021 or earlier	At risk	ChemicalQualityDiminution ForSW, Nutrients	Ag			<a href="#">View WB Page</a>	<a href="#">View WB on EPA Water Map</a>
18	IE_SW_G_001	Araglin	Groundwater	Tipperary County Council	DWPA; SAC	Good	Good	Good	Good	2021 or earlier	At risk	ChemicalQualityDiminution ForSW, Nutrients	For, Ag			<a href="#">View WB Page</a>	<a href="#">View WB on EPA Water Map</a>
18, 19, 20	IE_SW_G_004	Ballinhassig East	Groundwater	Cork County Council	DWPA; SAC	Good	Good	Good	Good	2021 or earlier	Not at risk					<a href="#">View WB Page</a>	<a href="#">View WB on EPA Water Map</a>
18, 19, 20, 21, 22	IE_SW_G_005	Ballinhassig West	Groundwater	Cork County Council	DWPA; SAC	Good	Good	Good	Good	2021 or earlier	Not at risk					<a href="#">View WB Page</a>	<a href="#">View WB on EPA Water Map</a>
16, 18, 24	IE_SW_G_010	Ballyhoura	Groundwater	Limerick City & County Council	DWPA; SAC	Good	Good	Good	Good	2021 or earlier	Not at risk					<a href="#">View WB Page</a>	<a href="#">View WB on EPA Water Map</a>
16, 18, 24	IE_SW_G_011	Ballyhoura Kiltorcan	Groundwater	Limerick City & County Council	DWPA	Good	Good	Good	Good	2021 or earlier	At risk	ChemicalQualityDiminution ForSW, Nutrients	For, Unknown, Ag			<a href="#">View WB Page</a>	<a href="#">View WB on EPA Water Map</a>
18	IE_SW_G_018	Banteer	Groundwater	Cork County Council	DWPA; SAC	Good	Good	Good	Good	2021 or earlier	Not at risk					<a href="#">View WB Page</a>	<a href="#">View WB on EPA Water Map</a>
18, 19, 21, 22	IE_SW_G_022	Cahersiveen	Groundwater	Kerry County Council	DWPA; SAC	Good	Good	Good	Good	2021 or earlier	Not at risk					<a href="#">View WB Page</a>	<a href="#">View WB on EPA Water Map</a>
16, 17, 18	IE_SW_G_025	Cappoquin Kiltorcan	Groundwater	Waterford City & County Council	DWPA; SAC	Good	Good	Good	Good	2021 or earlier	At risk	ChemicalQualityDiminution ForSW, Nutrients	Unknown, Ag			<a href="#">View WB Page</a>	<a href="#">View WB on EPA Water Map</a>
17, 18, 19, 22	IE_SW_G_037	Glenville	Groundwater	Cork County Council	DWPA; SAC	Good	Good	Good	Good	2021 or earlier	Not at risk					<a href="#">View WB Page</a>	<a href="#">View WB on EPA Water Map</a>
18	IE_SW_G_044	Kilmaclenine	Groundwater	Cork County Council	DWPA	Good	Good	Good	Good	2021 or earlier	Not at risk					<a href="#">View WB Page</a>	<a href="#">View WB on EPA Water Map</a>
16, 17, 18	IE_SW_G_047	Knockmealdown	Groundwater	Waterford City & County Council	DWPA; SAC	Good	Good	Good	Good	2021 or earlier	Not at risk					<a href="#">View WB Page</a>	<a href="#">View WB on EPA Water Map</a>
17, 18	IE_SW_G_050	Lismore	Groundwater	Waterford City & County Council	DWPA; SAC	Good	Good	Good	Good	2021 or earlier	At risk	Nutrients	Unknown			<a href="#">View WB Page</a>	<a href="#">View WB on EPA Water Map</a>
18, 19	IE_SW_G_058	Midleton	Groundwater	Cork County Council	DWPA; SAC	Good	Good	Good	Good	2021 or earlier	Review					<a href="#">View WB Page</a>	<a href="#">View WB on EPA Water Map</a>
18	IE_SW_G_064	Industrial Facility (P0404-01)	Groundwater	Cork County Council	DWPA	Poor	Poor	Poor	Good	2022-2027	At risk	ChemicalQualityDiminution ForSW, Nutrients	Ind			<a href="#">View WB Page</a>	<a href="#">View WB on EPA Water Map</a>
18, 24	IE_SW_G_068	Newtown Ballyhay	Groundwater	Cork County Council	DWPA; SAC	Good	Good	Good	Good	2021 or earlier	Not at risk					<a href="#">View WB Page</a>	<a href="#">View WB on EPA Water Map</a>
18, 22, 23, 24	IE_SW_G_070	Rathmore West	Groundwater	Cork County Council	DWPA; SAC	Good	Good	Good	Good	2021 or earlier	Not at risk					<a href="#">View WB Page</a>	<a href="#">View WB on EPA Water Map</a>
18, 24	IE_SW_G_071	Rathnacally	Groundwater	Cork County Council	DWPA	Good	Good	Good	Good	2021 or earlier	Not at risk					<a href="#">View WB Page</a>	<a href="#">View WB on EPA Water Map</a>
18, 22, 23	IE_SW_G_073	Scartaglin	Groundwater	Kerry County Council	DWPA; SAC	Good	Good	Good	Good	2021 or earlier	Not at risk					<a href="#">View WB Page</a>	<a href="#">View WB on EPA Water Map</a>
18	IE_SW_G_074	Tallow	Groundwater	Cork County Council	DWPA; SAC	Good	Good	Good	Good	2021 or earlier	Not at risk					<a href="#">View WB Page</a>	<a href="#">View WB on EPA Water Map</a>
18	IE_SW_G_075	Tourig Group 1	Groundwater	Cork County Council	DWPA; SAC	Good	Good	Good	Good	2021 or earlier	Not at risk					<a href="#">View WB Page</a>	<a href="#">View WB on EPA Water Map</a>
18	IE_SW_G_076	Tourig Group 2	Groundwater	Waterford City & County Council	DWPA; SAC	Good	Good	Good	Good	2021 or earlier	Not at risk					<a href="#">View WB Page</a>	<a href="#">View WB on EPA Water Map</a>
17, 18	IE_SW_G_077	Tourig Group 3	Groundwater	Waterford City & County Council	DWPA; SAC	Good	Good	Good	Good	2021 or earlier	Not at risk					<a href="#">View WB Page</a>	<a href="#">View WB on EPA Water Map</a>
16, 18, 24	IE_SW_G_082	Mitchelstown	Groundwater	Cork County Council	DWPA; SAC	Good	Poor	Good	Good	2021 or earlier	At risk	ChemicalQualityDiminution ForSW, Nutrients	Unknown, For, Ag			<a href="#">View WB Page</a>	<a href="#">View WB on EPA Water Map</a>
18	IE_SW_18A020020	ALLOW_010	River	Cork County Council		Good	Good	Good	Good	2021 or earlier	Not at risk			Allow	LAWPRO, Restoration	<a href="#">View WB Page</a>	<a href="#">View WB on EPA Water Map</a>
18	IE_SW_18A020050	ALLOW_020	River	Cork County Council	SAC;	Unassigned	Good	Good	Good	2021 or earlier	Not at risk			Allow	LAWPRO, Restoration	<a href="#">View WB Page</a>	<a href="#">View WB on EPA Water Map</a>
18	IE_SW_18A020100	ALLOW_030	River	Cork County Council	SAC;	High	Good	High	High	2021 or earlier	Review			Allow	LAWPRO, Restoration	<a href="#">View WB Page</a>	<a href="#">View WB on EPA Water Map</a>
18	IE_SW_18A020200	ALLOW_040	River	Cork County Council	DWPA; SAC;	Unassigned	High	Good	Good	2021 or earlier	Not at risk			Allow	LAWPRO, Restoration	<a href="#">View WB Page</a>	<a href="#">View WB on EPA Water Map</a>

18	IE_SW_18A020300	ALLOW_050	River	Cork County Council	SAC;	High	Good	Good	High	2022-2027	At risk	Sediment, Hydrological, Nutrients	Ab, Ag	Allow	LAWPRO, Restoration	<a href="#">View WB Page</a>	<a href="#">View WB on EPA Water Map</a>
18	IE_SW_18A020490	ALLOW_060	River	Cork County Council	SAC;	Poor	Poor	Moderate	Good	2022-2027	At risk	Hydrological, Morphological, Nutrients, Organic	HYMO, Ag, Ab, UWW, Ind	Allow	LAWPRO, Restoration	<a href="#">View WB Page</a>	<a href="#">View WB on EPA Water Map</a>
18	IE_SW_18A020600	ALLOW_070	River	Cork County Council	SAC;	Good	Good	Good	Good	2021 or earlier	Not at risk			Allow	LAWPRO, Restoration	<a href="#">View WB Page</a>	<a href="#">View WB on EPA Water Map</a>
18	IE_SW_18A030080	ARAGLIN (BLACKWATER)_010	River	Tipperary County Council		Good	Good	Good	Good	2021 or earlier	Not at risk					<a href="#">View WB Page</a>	<a href="#">View WB on EPA Water Map</a>
18	IE_SW_18A030200	ARAGLIN (BLACKWATER)_020	River	Waterford City & County Council	SAC;	Good	Good	Good	Good	2021 or earlier	Not at risk					<a href="#">View WB Page</a>	<a href="#">View WB on EPA Water Map</a>
18	IE_SW_18A030350	ARAGLIN (BLACKWATER)_030	River	Cork County Council	SAC;	Good	Good	Good	Good	2021 or earlier	Not at risk			Araglin	Cork County Council, Restoration	<a href="#">View WB Page</a>	<a href="#">View WB on EPA Water Map</a>
18	IE_SW_18A030500	ARAGLIN (BLACKWATER)_040	River	Cork County Council	SAC; SPA;	Good	Good	Good	High	2022-2027	At risk	UnknownImpactType	Unknown	Araglin	Cork County Council, Restoration	<a href="#">View WB Page</a>	<a href="#">View WB on EPA Water Map</a>
18	IE_SW_18A050550	AWBEG (Buttevant)_010	River	Cork County Council	SAC;	Moderate	Good	Moderate	Good	2022-2027	At risk	Hydrological, Morphological, Nutrients, Organic	Ag, HYMO	Awbeg (Buttevant)	LAWPRO, Restoration	<a href="#">View WB Page</a>	<a href="#">View WB on EPA Water Map</a>
18	IE_SW_18A050700	AWBEG (Buttevant)_020	River	Cork County Council	SAC;	Poor	Moderate	Poor	Good	2022-2027	At risk	Sediment, Hydrological, Nutrients, Organic	Unknown, UR, UWW	Awbeg (Buttevant)	LAWPRO, Restoration	<a href="#">View WB Page</a>	<a href="#">View WB on EPA Water Map</a>
18	IE_SW_18A050900	AWBEG (Buttevant)_030	River	Cork County Council	SAC;	Moderate	Moderate	Moderate	Good	2022-2027	At risk	Hydrological, Morphological	HYMO	Awbeg (Buttevant)	LAWPRO, Restoration	<a href="#">View WB Page</a>	<a href="#">View WB on EPA Water Map</a>
18	IE_SW_18A051000	AWBEG (Buttevant)_040	River	Cork County Council	SAC;	Poor	Poor	Poor	Good	2022-2027	At risk	Nutrients, Organic	UR	Awbeg (Buttevant)	LAWPRO, Restoration	<a href="#">View WB Page</a>	<a href="#">View WB on EPA Water Map</a>
18	IE_SW_18A051100	AWBEG (Buttevant)_050	River	Cork County Council	SAC;	Moderate	Good	Moderate	Good	2022-2027	At risk	Nutrients	Ag			<a href="#">View WB Page</a>	<a href="#">View WB on EPA Water Map</a>
18	IE_SW_18A051200	AWBEG (Buttevant)_060	River	Cork County Council	SAC;	Moderate	Good	Moderate	Good	2022-2027	At risk	Nutrients	Ag			<a href="#">View WB Page</a>	<a href="#">View WB on EPA Water Map</a>
18	IE_SW_18A051300	AWBEG (Buttevant)_070	River	Cork County Council	SAC;	Moderate	Good	Good	Good	2021 or earlier	Review					<a href="#">View WB Page</a>	<a href="#">View WB on EPA Water Map</a>
18	IE_SW_18A070200	AWNASKIRTAUN_010	River	Cork County Council	SAC;	Moderate	High	Good	Good	2021 or earlier	Not at risk					<a href="#">View WB Page</a>	<a href="#">View WB on EPA Water Map</a>
18	IE_SW_18A080120	AWBEG (BUTTEVANT) (EAST)_010	River	Limerick City & County Council	SAC;	Moderate	Moderate	Moderate	Good	2022-2027	At risk	Morphological, Nutrients	Ag, For	Awbeg (Buttevant)	LAWPRO, Restoration	<a href="#">View WB Page</a>	<a href="#">View WB on EPA Water Map</a>
18	IE_SW_18A080250	AWBEG (BUTTEVANT) (EAST)_020	River	Cork County Council	SAC;	Moderate	Good	Moderate	Good	2022-2027	At risk	Morphological, Nutrients, Organic	Ag, M+Q	Awbeg (Buttevant)	LAWPRO, Restoration	<a href="#">View WB Page</a>	<a href="#">View WB on EPA Water Map</a>
18	IE_SW_18A090300	AWBEG (BUTTEVANT) (WEST)_010	River	Cork County Council		Poor	Poor	Moderate	Good	2022-2027	At risk	Organic	Ag	Awbeg (Buttevant) West	LAWPRO, Restoration	<a href="#">View WB Page</a>	<a href="#">View WB on EPA Water Map</a>
18	IE_SW_18A090400	AWBEG (BUTTEVANT) (WEST)_020	River	Cork County Council	SAC;	Poor	Poor	Poor	Good	2022-2027	At risk	Hydrological, Morphological, Nutrients, Organic	HYMO, Ag	Awbeg (Buttevant) West	LAWPRO, Restoration	<a href="#">View WB Page</a>	<a href="#">View WB on EPA Water Map</a>
18	IE_SW_18A110680	ABARTAGH_010	River	Waterford City & County Council	SAC; NSA;	Unassigned	Good	Good	Good	2021 or earlier	Not at risk					<a href="#">View WB Page</a>	<a href="#">View WB on EPA Water Map</a>
18	IE_SW_18B010300	BEHANAGH_010	River	Limerick City & County Council	DWPA; SAC;	High	High	High	High	2021 or earlier	Not at risk			Upper Funshion	LAWPRO, Restoration	<a href="#">View WB Page</a>	<a href="#">View WB on EPA Water Map</a>
18	IE_SW_18B020050	BLACKWATER (MUNSTER)_010	River	Kerry County Council	Fish;	Good	Moderate	Good	Good	2021 or earlier	Not at risk					<a href="#">View WB Page</a>	<a href="#">View WB on EPA Water Map</a>
18	IE_SW_18B020075	BLACKWATER (MUNSTER)_020	River	Kerry County Council	SAC; Fish;	Good	Good	Good	Good	2021 or earlier	Not at risk					<a href="#">View WB Page</a>	<a href="#">View WB on EPA Water Map</a>
18	IE_SW_18B020200	BLACKWATER (MUNSTER)_030	River	Cork County Council	SAC; Fish;	Good	Good	Good	Good	2021 or earlier	Not at risk					<a href="#">View WB Page</a>	<a href="#">View WB on EPA Water Map</a>
18	IE_SW_18B020400	BLACKWATER (MUNSTER)_040	River	Kerry County Council	SAC; Fish;	Moderate	Moderate	Moderate	Good	2022-2027	At risk	Morphological	For			<a href="#">View WB Page</a>	<a href="#">View WB on EPA Water Map</a>
18	IE_SW_18B020600	BLACKWATER (MUNSTER)_050	River	Cork County Council	SAC; Fish;	High	High	Good	High	2022-2027	At risk	Sediment, Nutrients	Ag			<a href="#">View WB Page</a>	<a href="#">View WB on EPA Water Map</a>
18	IE_SW_18B020750	BLACKWATER (MUNSTER)_060	River	Cork County Council	SAC; Fish;	Good	Good	Good	High	2022-2027	At risk	Hydrological, Morphological, Nutrients	Ag, For, HYMO			<a href="#">View WB Page</a>	<a href="#">View WB on EPA Water Map</a>
18	IE_SW_18B020900	BLACKWATER (MUNSTER)_070	River	Cork County Council	SAC; Fish;	High	Good	Good	High	2022-2027	At risk	Hydrological, Nutrients	Ag, Unknown			<a href="#">View WB Page</a>	<a href="#">View WB on EPA Water Map</a>
18	IE_SW_18B021000	BLACKWATER (MUNSTER)_080	River	Cork County Council	SAC; Fish;	Good	Good	Good	High	2022-2027	At risk	Morphological, Nutrients	Ag			<a href="#">View WB Page</a>	<a href="#">View WB on EPA Water Map</a>
18	IE_SW_18B021200	BLACKWATER (MUNSTER)_090	River	Cork County Council	SAC; Fish;	Good	Good	Good	High	2022-2027	At risk	Hydrological, Morphological, Nutrients	Ag, HYMO			<a href="#">View WB Page</a>	<a href="#">View WB on EPA Water Map</a>
18	IE_SW_18B021300	BLACKWATER (MUNSTER)_100	River	Cork County Council	SAC; Fish;	Good	Good	Good	Good	2021 or earlier	Not at risk					<a href="#">View WB Page</a>	<a href="#">View WB on EPA Water Map</a>
18	IE_SW_18B021400	BLACKWATER (MUNSTER)_110	River	Cork County Council	SAC; Fish;	Good	Good	High	High	2021 or earlier	Review					<a href="#">View WB Page</a>	<a href="#">View WB on EPA Water Map</a>
18	IE_SW_18B021510	BLACKWATER (MUNSTER)_120	River	Cork County Council	SAC; Fish;	Good	Good	Moderate	Good	2022-2027	At risk	Sediment, Nutrients	Ag			<a href="#">View WB Page</a>	<a href="#">View WB on EPA Water Map</a>
18	IE_SW_18B021600	BLACKWATER (MUNSTER)_130	River	Cork County Council	SAC; Fish; NSA;	Unassigned	Good	Good	Good	2021 or earlier	Review					<a href="#">View WB Page</a>	<a href="#">View WB on EPA Water Map</a>
18	IE_SW_18B021720	BLACKWATER (MUNSTER)_140	River	Cork County Council	SAC; Fish; NSA;	Unassigned	Good	Good	Good	2021 or earlier	Not at risk					<a href="#">View WB Page</a>	<a href="#">View WB on EPA Water Map</a>
18	IE_SW_18B021800	BLACKWATER (MUNSTER)_150	River	Cork County Council	DWPA; SAC; Fish;	Good	Good	Good	Good	2021 or earlier	Not at risk					<a href="#">View WB Page</a>	<a href="#">View WB on EPA Water Map</a>
18	IE_SW_18B021900	BLACKWATER (MUNSTER)_160	River	Cork County Council	SAC; Fish; NSA;	Moderate	Moderate	Moderate	Good	2022-2027	At risk	Sediment, Nutrients, Organic, UnknownImpactType	Ag, DWTS, Unknown			<a href="#">View WB Page</a>	<a href="#">View WB on EPA Water Map</a>
18	IE_SW_18B022000	BLACKWATER (MUNSTER)_170	River	Cork County Council	SAC; Fish; NSA;	Good	Good	Good	Good	2021 or earlier	Not at risk					<a href="#">View WB Page</a>	<a href="#">View WB on EPA Water Map</a>
18	IE_SW_18B022100	BLACKWATER (MUNSTER)_180	River	Cork County Council	DWPA; SAC; Fish;	Unassigned	Good	Good	Good	2021 or earlier	Not at risk					<a href="#">View WB Page</a>	<a href="#">View WB on EPA Water Map</a>

18	IE_SW_18B022300	BLACKWATER (MUNSTER)_190	River	Cork County Council	SAC; Fish; SPA; NSA;	Good	Good	Good	Good	2021 or earlier	Not at risk					<a href="#">View WB Page</a>	<a href="#">View WB on EPA Water Map</a>
18	IE_SW_18B022450	BLACKWATER (MUNSTER)_200	River	Cork County Council	SAC; Fish; SPA; NSA;	Good	Good	Good	Good	2021 or earlier	Not at risk					<a href="#">View WB Page</a>	<a href="#">View WB on EPA Water Map</a>
18	IE_SW_18B022500	BLACKWATER (MUNSTER)_210	River	Waterford City & County Council	SAC; Fish; SPA; NSA;	Good	Good	Good	Good	2021 or earlier	Not at risk					<a href="#">View WB Page</a>	<a href="#">View WB on EPA Water Map</a>
18	IE_SW_18B022700	BLACKWATER (MUNSTER)_220	River	Waterford City & County Council	SAC; Fish; SPA; NSA;	Moderate	Moderate	Moderate	Good	2022-2027	At risk	Morphological	M+Q			<a href="#">View WB Page</a>	<a href="#">View WB on EPA Water Map</a>
18	IE_SW_18B050050	BRIDE (BLACKWATER)_010	River	Cork County Council	SAC; Fish;	Good	Good	Good	Good	2021 or earlier	Not at risk					<a href="#">View WB Page</a>	<a href="#">View WB on EPA Water Map</a>
18	IE_SW_18B050320	BRIDE (BLACKWATER)_020	River	Cork County Council	SAC; Fish;	Good	Good	Good	Good	2021 or earlier	Review					<a href="#">View WB Page</a>	<a href="#">View WB on EPA Water Map</a>
18	IE_SW_18B050400	BRIDE (BLACKWATER)_030	River	Cork County Council	DWPA; SAC; Fish;	Unassigned	Good	Good	Good	2021 or earlier	Review			Bride (Blackwater)	LAWPRO, Restoration	<a href="#">View WB Page</a>	<a href="#">View WB on EPA Water Map</a>
18	IE_SW_18B050500	BRIDE (BLACKWATER)_040	River	Cork County Council	SAC; Fish;	Moderate	Good	Good	Good	2021 or earlier	Review			Bride (Blackwater)	LAWPRO, Restoration	<a href="#">View WB Page</a>	<a href="#">View WB on EPA Water Map</a>
18	IE_SW_18B050600	BRIDE (BLACKWATER)_050	River	Cork County Council	SAC; Fish;	Moderate	Good	Good	Good	2021 or earlier	Review			Bride (Blackwater)	LAWPRO, Restoration	<a href="#">View WB Page</a>	<a href="#">View WB on EPA Water Map</a>
18	IE_SW_18B050700	BRIDE (BLACKWATER)_060	River	Cork County Council	SAC; Fish;	Unassigned	Good	Good	Good	2021 or earlier	Not at risk					<a href="#">View WB Page</a>	<a href="#">View WB on EPA Water Map</a>
18	IE_SW_18B050820	BRIDE (BLACKWATER)_070	River	Cork County Council	SAC; Fish;	Good	Good	Good	Good	2021 or earlier	Not at risk			Blackpool	NFGWS, Protection	<a href="#">View WB Page</a>	<a href="#">View WB on EPA Water Map</a>
18	IE_SW_18B051000	Bride [Waterford]_010	River	Waterford City & County Council	DWPA; SAC; Fish; NSA;	Unassigned	Good	Good	Good	2021 or earlier	Not at risk					<a href="#">View WB Page</a>	<a href="#">View WB on EPA Water Map</a>
18	IE_SW_18B060100	BROGEEN_010	River	Cork County Council		Good	Good	Moderate	Good	2022-2027	At risk	Nutrients, Organic	Ag			<a href="#">View WB Page</a>	<a href="#">View WB on EPA Water Map</a>
18	IE_SW_18B060300	BROGEEN_020	River	Cork County Council	SAC;	Good	Good	Good	Good	2021 or earlier	Not at risk					<a href="#">View WB Page</a>	<a href="#">View WB on EPA Water Map</a>
18	IE_SW_18B060800	BROGEEN_030	River	Cork County Council	SAC;	High	Good	Good	Good	2021 or earlier	Not at risk					<a href="#">View WB Page</a>	<a href="#">View WB on EPA Water Map</a>
18	IE_SW_18B080300	BALLYCLOGH STREAM_010	River	Cork County Council		Poor	Poor	Poor	Good	2022-2027	At risk	Hydrological, Morphological	HYMO	Ballyclogh Stream	Cork County Council, Restoration	<a href="#">View WB Page</a>	<a href="#">View WB on EPA Water Map</a>
18	IE_SW_18B080500	BALLYCLOGH STREAM_020	River	Cork County Council	SAC;	Good	Moderate	Moderate	Good	2022-2027	At risk	Nutrients, Organic	Ag	Ballyclogh Stream	Cork County Council, Restoration	<a href="#">View WB Page</a>	<a href="#">View WB on EPA Water Map</a>
18	IE_SW_18B100400	BALLARD STREAM_010	River	Cork County Council	SAC;	Good	Good	Moderate	Good	2022-2027	At risk	Sediment, Nutrients	Ag, For			<a href="#">View WB Page</a>	<a href="#">View WB on EPA Water Map</a>
18	IE_SW_18C020070	CLYDA_010	River	Cork County Council		Good	Good	Moderate	High	2022-2027	At risk	Hydrological, Morphological, Nutrients, Organic, UnknownImpactType	Unknown, HYMO, UWW			<a href="#">View WB Page</a>	<a href="#">View WB on EPA Water Map</a>
18	IE_SW_18C020090	CLYDA_020	River	Cork County Council		High	High	Good	High	2022-2027	At risk	UnknownImpactType	Unknown			<a href="#">View WB Page</a>	<a href="#">View WB on EPA Water Map</a>
18	IE_SW_18C020300	CLYDA_030	River	Cork County Council	DWPA; SAC;	Good	Good	Good	Good	2021 or earlier	Not at risk					<a href="#">View WB Page</a>	<a href="#">View WB on EPA Water Map</a>
18	IE_SW_18C030400	COOM_010	River	Cork County Council	Fish;	Good	Good	Good	Good	2021 or earlier	Not at risk					<a href="#">View WB Page</a>	<a href="#">View WB on EPA Water Map</a>
18	IE_SW_18C060400	CURRAHEEN (CORK)_010	River	Cork County Council		Poor	Moderate	Moderate	Good	2022-2027	At risk	Sediment	Ag, For	Curraheen	Cork County Council, Restoration	<a href="#">View WB Page</a>	<a href="#">View WB on EPA Water Map</a>
18	IE_SW_18C070300	CRINNAGHTANE_010	River	Cork County Council	SAC;	Good	Good	Good	Good	2021 or earlier	Not at risk					<a href="#">View WB Page</a>	<a href="#">View WB on EPA Water Map</a>
18	IE_SW_18D010050	DALUA_010	River	Cork County Council	SAC;	Good	Good	Good	Good	2021 or earlier	Not at risk					<a href="#">View WB Page</a>	<a href="#">View WB on EPA Water Map</a>
18	IE_SW_18D010200	DALUA_020	River	Cork County Council	SAC;	Good	Good	Good	Good	2021 or earlier	Not at risk					<a href="#">View WB Page</a>	<a href="#">View WB on EPA Water Map</a>
18	IE_SW_18D010300	DALUA_030	River	Cork County Council	SAC;	Good	Good	Good	High	2022-2027	At risk	UnknownImpactType	Unknown			<a href="#">View WB Page</a>	<a href="#">View WB on EPA Water Map</a>
18	IE_SW_18D010500	DALUA_040	River	Cork County Council	SAC;	Good	High	High	Good	2021 or earlier	Not at risk					<a href="#">View WB Page</a>	<a href="#">View WB on EPA Water Map</a>
18	IE_SW_18D020300	DOUGLAS (BRIDE)_010	River	Cork County Council		Poor	Poor	Moderate	Good	2022-2027	At risk	Nutrients, Organic	Ag	Bride (Blackwater)	LAWPRO, Restoration	<a href="#">View WB Page</a>	<a href="#">View WB on EPA Water Map</a>
18	IE_SW_18D020800	DOUGLAS (BRIDE)_020	River	Cork County Council		Moderate	Moderate	Good	Good	2021 or earlier	Review			Bride (Blackwater)	LAWPRO, Restoration	<a href="#">View WB Page</a>	<a href="#">View WB on EPA Water Map</a>
18	IE_SW_18D030500	DOUGLAS (ARAGLIN)_010	River	Cork County Council	SAC;	Good	Good	Good	Good	2021 or earlier	Not at risk					<a href="#">View WB Page</a>	<a href="#">View WB on EPA Water Map</a>
18	IE_SW_18F010300	FARAHY_010	River	Cork County Council		Moderate	Moderate	Moderate	Good	2022-2027	At risk	Morphological, Nutrients	Unknown, For	Farahy	LAWPRO, Restoration	<a href="#">View WB Page</a>	<a href="#">View WB on EPA Water Map</a>
18	IE_SW_18F010500	FARAHY_020	River	Cork County Council		Moderate	Moderate	Moderate	Good	2022-2027	At risk	Morphological, Nutrients	For, Ag	Farahy	LAWPRO, Restoration	<a href="#">View WB Page</a>	<a href="#">View WB on EPA Water Map</a>
18	IE_SW_18F020100	FINISK_010	River	Tipperary County Council	SAC;	Good	Good	Good	Good	2021 or earlier	Not at risk					<a href="#">View WB Page</a>	<a href="#">View WB on EPA Water Map</a>
18	IE_SW_18F020300	FINISK_020	River	Waterford City & County Council	SAC;	Good	Moderate	Moderate	Good	2022-2027	Review					<a href="#">View WB Page</a>	<a href="#">View WB on EPA Water Map</a>
18	IE_SW_18F020500	FINISK_030	River	Waterford City & County Council	SAC; NSA;	Good	Good	High	Good	2021 or earlier	Not at risk					<a href="#">View WB Page</a>	<a href="#">View WB on EPA Water Map</a>
18	IE_SW_18F030060	FINNOW (BLACKWATER)_010	River	Cork County Council		Good	Good	High	Good	2021 or earlier	Not at risk			Finnow (Blackwater)	Cork County Council, Restoration	<a href="#">View WB Page</a>	<a href="#">View WB on EPA Water Map</a>
18	IE_SW_18F030200	FINNOW (BLACKWATER)_020	River	Cork County Council	SAC;	Good	Good	Good	Good	2021 or earlier	Not at risk			Finnow (Blackwater)	Cork County Council, Restoration	<a href="#">View WB Page</a>	<a href="#">View WB on EPA Water Map</a>
18	IE_SW_18F030300	FINNOW (BLACKWATER)_030	River	Cork County Council	SAC;	Unassigned	Good	High	Good	2021 or earlier	Not at risk			Finnow (Blackwater)	Cork County Council, Restoration	<a href="#">View WB Page</a>	<a href="#">View WB on EPA Water Map</a>
18	IE_SW_18F030400	FINNOW (BLACKWATER)_040	River	Cork County Council	SAC;	Good	Good	Good	Good	2021 or earlier	Review			Finnow (Blackwater)	Cork County Council, Restoration	<a href="#">View WB Page</a>	<a href="#">View WB on EPA Water Map</a>
18	IE_SW_18F040500	FLESK (BRIDE)_010	River	Cork County Council		Poor	Poor	Poor	Good	2022-2027	At risk	Nutrients, Organic	UWW, Ind	Bride (Blackwater)	LAWPRO, Restoration	<a href="#">View WB Page</a>	<a href="#">View WB on EPA Water Map</a>

18	IE_SW_18F041000	FLESK (BRIDE)_020	River	Cork County Council	SAC;	Good	Moderate	Moderate	Good	2022-2027	At risk	Nutrients	Ag	Bride (Blackwater)	LAWPRO, Restoration	<a href="#">View WB Page</a>	<a href="#">View WB on EPA Water Map</a>
18	IE_SW_18F050030	FUNSHION_010	River	Limerick City & County Council	SAC;	Good	Good	Good	Good	2021 or earlier	Not at risk			Upper Funshion	LAWPRO, Restoration	<a href="#">View WB Page</a>	<a href="#">View WB on EPA Water Map</a>
18	IE_SW_18F050100	FUNSHION_020	River	Limerick City & County Council		Good	Good	Good	Good	2021 or earlier	Not at risk			Upper Funshion	LAWPRO, Restoration	<a href="#">View WB Page</a>	<a href="#">View WB on EPA Water Map</a>
18	IE_SW_18F050310	FUNSHION_030	River	Cork County Council		Poor	Poor	Moderate	Good	2022-2027	At risk	Nutrients, Organic	Ag, Ind, UWW	Upper Funshion	LAWPRO, Restoration	<a href="#">View WB Page</a>	<a href="#">View WB on EPA Water Map</a>
18	IE_SW_18F050600	FUNSHION_040	River	Cork County Council		Good	Good	Good	Good	2021 or earlier	Not at risk			Upper Funshion	LAWPRO, Restoration	<a href="#">View WB Page</a>	<a href="#">View WB on EPA Water Map</a>
18	IE_SW_18F050700	FUNSHION_050	River	Cork County Council		Good	Good	Good	High	2022-2027	At risk	Nutrients	Ag	Funshion	LAWPRO, Restoration	<a href="#">View WB Page</a>	<a href="#">View WB on EPA Water Map</a>
18	IE_SW_18F050800	FUNSHION_060	River	Cork County Council		Moderate	Good	Good	Good	2021 or earlier	Not at risk			Funshion	LAWPRO, Restoration	<a href="#">View WB Page</a>	<a href="#">View WB on EPA Water Map</a>
18	IE_SW_18F050900	FUNSHION_070	River	Cork County Council		Good	Good	Good	Good	2021 or earlier	Not at risk			Funshion	LAWPRO, Restoration	<a href="#">View WB Page</a>	<a href="#">View WB on EPA Water Map</a>
18	IE_SW_18F051100	FUNSHION_080	River	Cork County Council	SAC; SPA;	Moderate	Moderate	Moderate	Good	2022-2027	At risk	Morphological, Nutrients, Organic	Ag, Ind, Unknown	Funshion	LAWPRO, Restoration	<a href="#">View WB Page</a>	<a href="#">View WB on EPA Water Map</a>
18	IE_SW_18F060300	FARNANE_010	River	Waterford City & County Council	SAC;	High	High	High	High	2021 or earlier	Not at risk					<a href="#">View WB Page</a>	<a href="#">View WB on EPA Water Map</a>
18	IE_SW_18G020400	GLASHANABRACK_010	River	Cork County Council	SAC;	High	Good	Good	Good	2021 or earlier	Not at risk					<a href="#">View WB Page</a>	<a href="#">View WB on EPA Water Map</a>
18	IE_SW_18G020500	GLASHANABRACK_020	River	Cork County Council	SAC;	Unassigned	Good	Moderate	Good	2022-2027	At risk	Nutrients, Organic	UWW, Unknown			<a href="#">View WB Page</a>	<a href="#">View WB on EPA Water Map</a>
18	IE_SW_18G030500	GLASHAWEE (ALLOW)_010	River	Cork County Council	SAC;	Good	Good	Good	Good	2021 or earlier	Not at risk			Allow	LAWPRO, Restoration	<a href="#">View WB Page</a>	<a href="#">View WB on EPA Water Map</a>
18	IE_SW_18G040600	GLEN (BANTEER)_010	River	Cork County Council	SAC;	High	High	High	High	2021 or earlier	Not at risk					<a href="#">View WB Page</a>	<a href="#">View WB on EPA Water Map</a>
18	IE_SW_18G040900	GLEN (BANTEER)_020	River	Cork County Council	SAC;	High	High	High	High	2021 or earlier	Not at risk					<a href="#">View WB Page</a>	<a href="#">View WB on EPA Water Map</a>
18	IE_SW_18G041100	GLEN (BANTEER)_030	River	Cork County Council	SAC;	High	High	High	High	2021 or earlier	Not at risk					<a href="#">View WB Page</a>	<a href="#">View WB on EPA Water Map</a>
18	IE_SW_18G050200	GLENABOY_010	River	Cork County Council		Good	Good	Moderate	Good	2022-2027	At risk	Nutrients	Ag			<a href="#">View WB Page</a>	<a href="#">View WB on EPA Water Map</a>
18	IE_SW_18G050600	GLENABOY_020	River	Waterford City & County Council	SAC;	Moderate	Moderate	Moderate	Good	2022-2027	At risk	Nutrients, Organic	Ag, UR	Glenaboy	LAWPRO, Restoration	<a href="#">View WB Page</a>	<a href="#">View WB on EPA Water Map</a>
18	IE_SW_18G060200	GLENAKEEFE_010	River	Waterford City & County Council		High	High	Good	High	2022-2027	At risk	Nutrients	Unknown			<a href="#">View WB Page</a>	<a href="#">View WB on EPA Water Map</a>
18	IE_SW_18G060400	GLENAKEEFE_020	River	Waterford City & County Council	SAC;	High	High	High	High	2021 or earlier	Not at risk					<a href="#">View WB Page</a>	<a href="#">View WB on EPA Water Map</a>
18	IE_SW_18G070300	GLENDINE (BLACKWATER)_010	River	Waterford City & County Council	DWPA; SAC; SPA; NSA;	Good	Good	Good	Good	2021 or earlier	Not at risk					<a href="#">View WB Page</a>	<a href="#">View WB on EPA Water Map</a>
18	IE_SW_18G080500	GLENLARA_010	River	Cork County Council	SAC;	Moderate	Moderate	Moderate	Good	2022-2027	At risk	Hydrological, Morphological	HYMO, For	Glenlara	Cork County Council, Restoration	<a href="#">View WB Page</a>	<a href="#">View WB on EPA Water Map</a>
18	IE_SW_18G100040	GLENNAFALLIA_010	River	Waterford City & County Council		Good	Good	High	High	2021 or earlier	Review			Owennashad - Blue Dot	LAWPRO, Restoration	<a href="#">View WB Page</a>	<a href="#">View WB on EPA Water Map</a>
18	IE_SW_18G100200	GLENNAFALLIA_020	River	Waterford City & County Council	SAC; NSA;	Good	Good	Moderate	Good	2022-2027	Review			Owennashad - Blue Dot	LAWPRO, Restoration	<a href="#">View WB Page</a>	<a href="#">View WB on EPA Water Map</a>
18	IE_SW_18G110300	GLENSELANE_010	River	Waterford City & County Council	SAC;	High	High	Moderate	High	2022-2027	Review					<a href="#">View WB Page</a>	<a href="#">View WB on EPA Water Map</a>
18	IE_SW_18G120200	GOISH_010	River	Waterford City & County Council		Moderate	Good	Moderate	Good	2022-2027	At risk	Morphological, UnknownImpactType	For, Unknown			<a href="#">View WB Page</a>	<a href="#">View WB on EPA Water Map</a>
18	IE_SW_18G120300	GOISH_020	River	Waterford City & County Council	SAC; NSA;	Moderate	Good	Moderate	Good	2022-2027	At risk	Sediment, Nutrients	Ag			<a href="#">View WB Page</a>	<a href="#">View WB on EPA Water Map</a>
18	IE_SW_18G130200	GRADOGE_010	River	Cork County Council		Poor	Poor	Poor	Good	2022-2027	At risk	Nutrients, Organic	UR, HPS, UWW	Upper Funshion	LAWPRO, Restoration	<a href="#">View WB Page</a>	<a href="#">View WB on EPA Water Map</a>
18	IE_SW_18H010790	HARROWHILL_010	River	Waterford City & County Council	SAC; SPA; NSA;	Unassigned	Good	Good	Good	2021 or earlier	Not at risk					<a href="#">View WB Page</a>	<a href="#">View WB on EPA Water Map</a>
18	IE_SW_18K020500	KNOPPOGE_010	River	Cork County Council	SAC;	Good	Good	Good	Good	2021 or earlier	Not at risk			Bride (Blackwater)	LAWPRO, Restoration	<a href="#">View WB Page</a>	<a href="#">View WB on EPA Water Map</a>
18	IE_SW_18K030940	KEALE STREAM_010	River	Cork County Council	SAC;	Unassigned	High	Good	Good	2021 or earlier	Review					<a href="#">View WB Page</a>	<a href="#">View WB on EPA Water Map</a>
18	IE_SW_18K540860	KILMEEDY WEST_010	River	Waterford City & County Council	SAC; SPA; NSA;	Unassigned	Good	Good	Good	2021 or earlier	Review					<a href="#">View WB Page</a>	<a href="#">View WB on EPA Water Map</a>
18	IE_SW_18K980670	KNOCKANEROE_010	River	Cork County Council	SAC;	Unassigned	Good	Good	Good	2021 or earlier	Review					<a href="#">View WB Page</a>	<a href="#">View WB on EPA Water Map</a>
18	IE_SW_18L010100	LICKY_010	River	Waterford City & County Council	SAC;	Moderate	Good	Good	Good	2021 or earlier	Not at risk			Licky	LAWPRO, Restoration	<a href="#">View WB Page</a>	<a href="#">View WB on EPA Water Map</a>
18	IE_SW_18L010150	LICKY_020	River	Waterford City & County Council	SAC;	Good	Good	Good	Good	2021 or earlier	Not at risk			Licky	LAWPRO, Restoration	<a href="#">View WB Page</a>	<a href="#">View WB on EPA Water Map</a>
18	IE_SW_18L010200	LICKY_030	River	Waterford City & County Council	SAC; NSA;	Good	Good	Good	Good	2021 or earlier	Not at risk			Licky	LAWPRO, Restoration	<a href="#">View WB Page</a>	<a href="#">View WB on EPA Water Map</a>
18	IE_SW_18L020900	LYRE_010	River	Cork County Council		Moderate	Moderate	Moderate	Good	2022-2027	At risk	Morphological	For			<a href="#">View WB Page</a>	<a href="#">View WB on EPA Water Map</a>
18	IE_SW_18L021100	LYRE_020	River	Cork County Council	SAC;	Good	Good	Moderate	Good	2022-2027	At risk	UnknownImpactType	Unknown			<a href="#">View WB Page</a>	<a href="#">View WB on EPA Water Map</a>
18	IE_SW_18L220930	LYRENACALLEE EAST_010	River	Waterford City & County Council	SAC; NSA;	Unassigned	Good	Good	Good	2021 or earlier	Review					<a href="#">View WB Page</a>	<a href="#">View WB on EPA Water Map</a>
18	IE_SW_18L450760	LISDUGGAN NORTH_010	River	Cork County Council	SAC;	Unassigned	High	Good	Good	2021 or earlier	Not at risk					<a href="#">View WB Page</a>	<a href="#">View WB on EPA Water Map</a>
18	IE_SW_18L570860	LACKFRANCIS_010	River	Cork County Council		Unassigned	Moderate	Moderate	Good	2022-2027	Review			Awbeg (Buttevant)	LAWPRO, Restoration	<a href="#">View WB Page</a>	<a href="#">View WB on EPA Water Map</a>
18	IE_SW_18M010100	MONAVUGGA_010	River	Waterford City & County Council		High	High	Good	High	2022-2027	At risk	UnknownImpactType	For			<a href="#">View WB Page</a>	<a href="#">View WB on EPA Water Map</a>

18	IE_SW_18M260940	MONEYGORM_010	River	Waterford City & County Council	SAC; NSA;	Unassigned	Good	Good	Good	2021 or earlier	Review					<a href="#">View WB Page</a>	<a href="#">View WB on EPA Water Map</a>
18	IE_SW_18M310560	MUCKRIDGE_010	River	Cork County Council	SAC; SPA; NSA;	Unassigned	Moderate	Moderate	Good	2022-2027	Review					<a href="#">View WB Page</a>	<a href="#">View WB on EPA Water Map</a>
18	IE_SW_18M670920	MONANIMY_LOWER_010	River	Cork County Council	SAC;	Unassigned	Good	Good	Good	2021 or earlier	Not at risk					<a href="#">View WB Page</a>	<a href="#">View WB on EPA Water Map</a>
18	IE_SW_18N010400	NAD_010	River	Cork County Council	SAC;	High	High	High	High	2021 or earlier	Not at risk					<a href="#">View WB Page</a>	<a href="#">View WB on EPA Water Map</a>
18	IE_SW_18O010200	OGEEN_010	River	Limerick City & County Council		Moderate	Good	Good	High	2022-2027	At risk	Sediment	For	Ogeen	LAWPRO, Restoration	<a href="#">View WB Page</a>	<a href="#">View WB on EPA Water Map</a>
18	IE_SW_18O010400	OGEEN_020	River	Cork County Council		Moderate	Good	High	High	2021 or earlier	Review			Ogeen	LAWPRO, Restoration	<a href="#">View WB Page</a>	<a href="#">View WB on EPA Water Map</a>
18	IE_SW_18O020400	OWBEG (WATERFORD)_010	River	Waterford City & County Council		Moderate	Moderate	Moderate	Good	2022-2027	At risk	UnknownImpactType	Unknown			<a href="#">View WB Page</a>	<a href="#">View WB on EPA Water Map</a>
18	IE_SW_18O020800	OWBEG (WATERFORD)_020	River	Waterford City & County Council	NSA;	Moderate	Moderate	Moderate	Good	2022-2027	At risk	UnknownImpactType	Unknown			<a href="#">View WB Page</a>	<a href="#">View WB on EPA Water Map</a>
18	IE_SW_18O030300	OWENAGEERAGH_010	River	Cork County Council	SAC;	Good	Good	Good	Good	2021 or earlier	Not at risk			Bride (Blackwater)	LAWPRO, Restoration	<a href="#">View WB Page</a>	<a href="#">View WB on EPA Water Map</a>
18	IE_SW_18O040200	OWENANARE_010	River	Cork County Council		High	High	Good	Good	2021 or earlier	Not at risk					<a href="#">View WB Page</a>	<a href="#">View WB on EPA Water Map</a>
18	IE_SW_18O040600	OWENANARE_020	River	Cork County Council		High	Good	High	High	2021 or earlier	Review					<a href="#">View WB Page</a>	<a href="#">View WB on EPA Water Map</a>
18	IE_SW_18O050500	OWENBAUN (RATHCOOL)_010	River	Cork County Council	SAC;	Good	Good	Good	Good	2021 or earlier	Not at risk					<a href="#">View WB Page</a>	<a href="#">View WB on EPA Water Map</a>
18	IE_SW_18O050900	OWENBAUN (RATHCOOL)_020	River	Cork County Council	SAC;	Good	Good	Good	High	2022-2027	At risk	Nutrients	DWTS, Ag	Owenbaun (Rathcool)	Cork County Council, Restoration	<a href="#">View WB Page</a>	<a href="#">View WB on EPA Water Map</a>
18	IE_SW_18O060500	OWENKEAL_010	River	Cork County Council	SAC;	High	Good	Good	Good	2021 or earlier	Not at risk					<a href="#">View WB Page</a>	<a href="#">View WB on EPA Water Map</a>
18	IE_SW_18O060600	OWENKEAL_020	River	Cork County Council	SAC;	Good	Good	High	Good	2021 or earlier	Not at risk					<a href="#">View WB Page</a>	<a href="#">View WB on EPA Water Map</a>
18	IE_SW_18O070700	OWENNAGLOO_010	River	Cork County Council	SAC;	Good	Good	Moderate	Good	2022-2027	At risk	Nutrients	Ag			<a href="#">View WB Page</a>	<a href="#">View WB on EPA Water Map</a>
18	IE_SW_18O080060	OWENNASHAD_010	River	Waterford City & County Council		High	Good	Good	High	2022-2027	At risk	UnknownImpactType	Ag, For	Owennashad - Blue Dot	LAWPRO, Restoration	<a href="#">View WB Page</a>	<a href="#">View WB on EPA Water Map</a>
18	IE_SW_18O080140	OWENNASHAD_020	River	Waterford City & County Council	SAC;	Good	Good	Good	High	2022-2027	At risk	Morphological	HYMO	Owennashad - Blue Dot	LAWPRO, Restoration	<a href="#">View WB Page</a>	<a href="#">View WB on EPA Water Map</a>
18	IE_SW_18O080200	OWENNASHAD_030	River	Waterford City & County Council	SAC;	Good	Good	Good	Good	2021 or earlier	Not at risk			Owennashad - Blue Dot	LAWPRO, Restoration	<a href="#">View WB Page</a>	<a href="#">View WB on EPA Water Map</a>
18	IE_SW_18O090400	OWENTARAGLIN_010	River	Cork County Council	SAC;	Good	Good	Good	Good	2021 or earlier	Not at risk			Owentaraglin	LAWPRO, Restoration	<a href="#">View WB Page</a>	<a href="#">View WB on EPA Water Map</a>
18	IE_SW_18O090900	OWENTARAGLIN_020	River	Cork County Council	SAC;	Good	Moderate	Moderate	Good	2022-2027	At risk	Sediment, Hydrological, Nutrients	Unknown, Ag	Owentaraglin	LAWPRO, Restoration	<a href="#">View WB Page</a>	<a href="#">View WB on EPA Water Map</a>
18	IE_SW_18O091100	OWENTARAGLIN_030	River	Cork County Council	SAC;	Good	Good	Good	High	2022-2027	At risk	Morphological, Nutrients	Ag, UWW	Owentaraglin	LAWPRO, Restoration	<a href="#">View WB Page</a>	<a href="#">View WB on EPA Water Map</a>
18	IE_SW_18O091200	OWENTARAGLIN_040	River	Cork County Council	SAC;	High	High	Good	High	2022-2027	At risk	Sediment, Morphological	HYMO, Ag	Owentaraglin	LAWPRO, Restoration	<a href="#">View WB Page</a>	<a href="#">View WB on EPA Water Map</a>
18	IE_SW_18O120820	Oakfront_010	River	Cork County Council	SAC;	Unassigned	Good	Moderate	Good	2022-2027	Review					<a href="#">View WB Page</a>	<a href="#">View WB on EPA Water Map</a>
18	IE_SW_18R010400	RATHCOOL_010	River	Cork County Council	SAC;	Good	Good	Good	Good	2021 or earlier	Not at risk					<a href="#">View WB Page</a>	<a href="#">View WB on EPA Water Map</a>
18	IE_SW_18R010700	RATHCOOL_020	River	Cork County Council	SAC;	Good	Good	High	Good	2021 or earlier	Not at risk					<a href="#">View WB Page</a>	<a href="#">View WB on EPA Water Map</a>
18	IE_SW_18R020500	ROSS (KILLAVULLEN)_010	River	Cork County Council	SAC;	Moderate	Good	Moderate	Good	2022-2027	At risk	Nutrients, Organic	Ag, UWW			<a href="#">View WB Page</a>	<a href="#">View WB on EPA Water Map</a>
18	IE_SW_18S030200	SHEEP_010	River	Limerick City & County Council		Good	Good	Good	Good	2021 or earlier	Not at risk			Upper Funshion	LAWPRO, Restoration	<a href="#">View WB Page</a>	<a href="#">View WB on EPA Water Map</a>
18	IE_SW_18S030400	SHEEP_020	River	Limerick City & County Council	SAC;	Good	Good	Good	Good	2021 or earlier	Not at risk			Upper Funshion	LAWPRO, Restoration	<a href="#">View WB Page</a>	<a href="#">View WB on EPA Water Map</a>
18	IE_SW_18S030600	SHEEP_030	River	Cork County Council		Good	Good	Good	Good	2021 or earlier	Not at risk			Upper Funshion	LAWPRO, Restoration	<a href="#">View WB Page</a>	<a href="#">View WB on EPA Water Map</a>
18	IE_SW_18T030300	TOURIG_010	River	Cork County Council		Good	Good	Good	Good	2021 or earlier	Not at risk					<a href="#">View WB Page</a>	<a href="#">View WB on EPA Water Map</a>
18	IE_SW_18T030700	TOURIG_020	River	Cork County Council	DWPA; NSA;	Good	Good	Good	Good	2021 or earlier	Not at risk					<a href="#">View WB Page</a>	<a href="#">View WB on EPA Water Map</a>
17, 18	IE_SW_020_0100	Lower Blackwater M Estuary / Youghal Harbour	Transitional	Waterford City & County Council	SAC; SPA; NSA;	Moderate	Moderate	Moderate	Good	2022-2027	At risk	Nutrients, Organic	Ag			<a href="#">View WB Page</a>	<a href="#">View WB on EPA Water Map</a>
18	IE_SW_020_0400	Lackaroe (Glendine Estuary)	Transitional	Waterford City & County Council	SAC; SPA;	Unassigned	Unassigned	Unassigned	Good	Unknown	Review					<a href="#">View WB Page</a>	<a href="#">View WB on EPA Water Map</a>
18	IE_SW_020_0500	Upper Blackwater M Estuary	Transitional	Waterford City & County Council	SAC; Fish; NSA;	High	High	Moderate	Good	2022-2027	At risk	Nutrients	Ag			<a href="#">View WB Page</a>	<a href="#">View WB on EPA Water Map</a>