



Cycle 3

HA 17 Colligan-Mahon Catchment Report, May
2024



Introduction

Water Quality
Summary

High Status
Objectives

Water Quality
Changes

WFD Risk

Significant
Pressures

Action

Summary
Information

Introduction

This report provides an overview of the water quality in the Colligan-Mahon Catchment and the pressures impacting on water quality. This report is based on data up to 2021. The latest water quality data, dashboards and maps throughout this report are available on catchments.ie and [EPA Water Map](https://epa.maps.ie).

The Colligan-Mahon Catchment includes the area drained by the rivers Colligan and Mahon, and all streams entering tidal water between Cheekpoint and East Point, Co. Waterford, draining a total area of 665km². The largest urban centre in the catchment is Tramore. The other main urban centres in this catchment are Dungarvan and Dunmore East.

The Colligan-Mahon catchment is divided into six subcatchments with 35 river waterbodies, two lakes, five transitional, seven coastal and 15 groundwater bodies.

[View the Colligan-Mahon Catchment on the EPA Water Map](#)

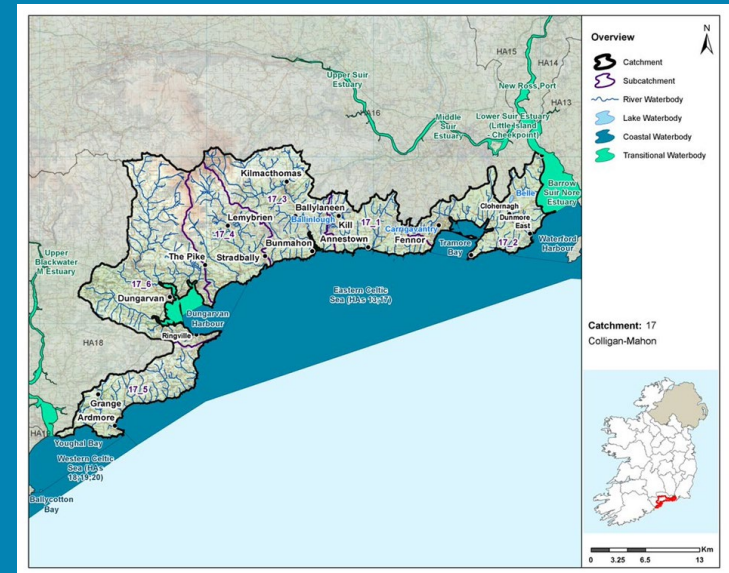
Previous Catchment Assessments

Previous catchment assessments, which provide additional historic context and information, are archived on catchments.ie:

- [Cycle 2 Catchment Assessments – published September 2018](#)
- [Cycle 3 Draft Catchment Assessments – published September 2021](#)

Online Dashboards

Links to online dashboards are provided in this report – these numbers may vary from those in this document as time progress and the online dashboards are updated based on the latest data and scientific assessments.



Overview of Subcatchments in the Colligan-Mahon Catchment

Water Quality Summary

Introduction

Water Quality Summary

High Status Objectives

Water Quality Changes

WFD Risk

Significant Pressures

Action

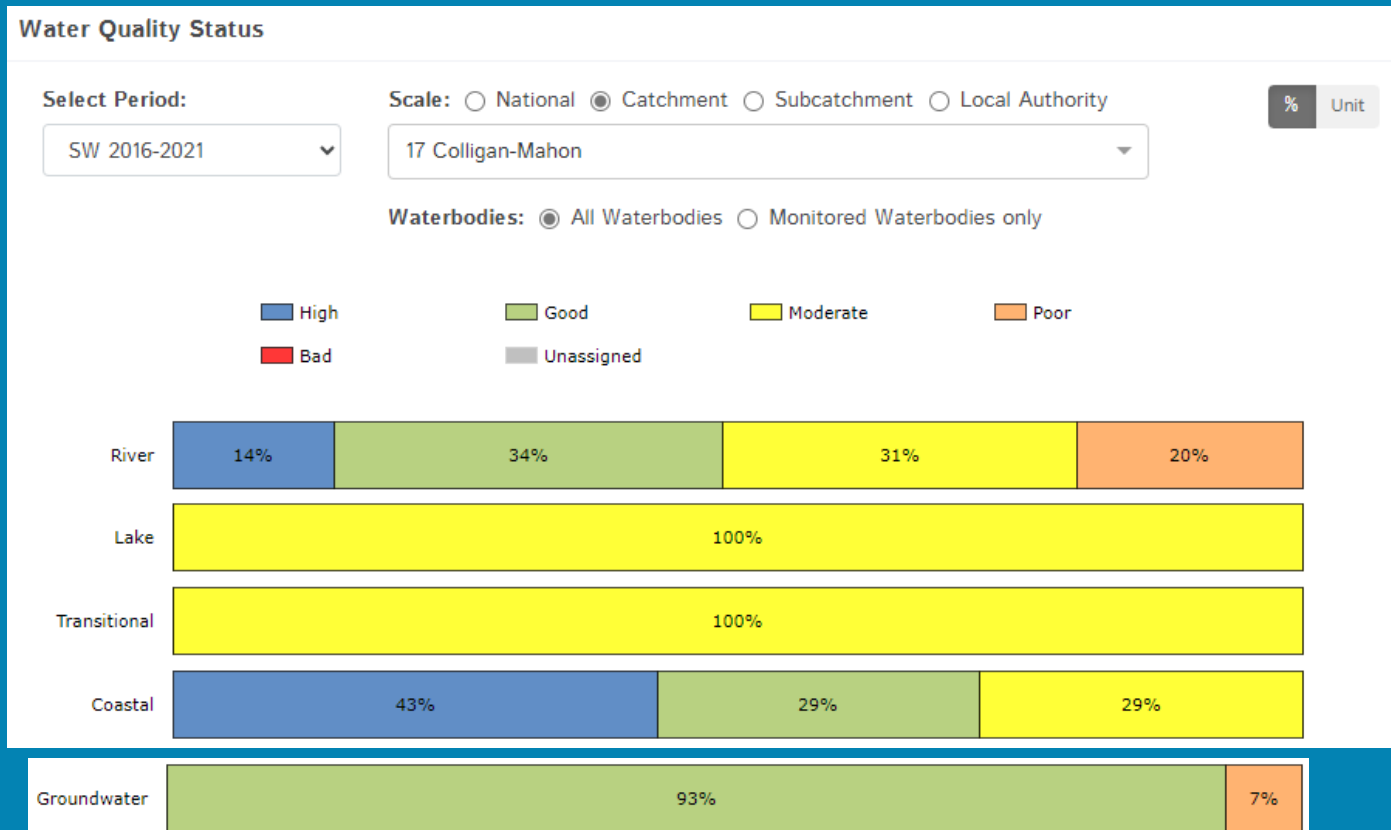
Summary Information

The dashboard below provides a breakdown of water quality status for surface and groundwater bodies in the Colligan-Mahon Catchment.

A total of 45% of surface waterbodies were at Good or High Ecological Status in the 2016-2021 monitoring period. Ninety-three percent of groundwater bodies were at Good status.

Go to EPA Water Maps for WFD Status

[EPA Water Map](#)



Water quality status 2016-2021 for the Colligan-Mahon Catchment.
View Online Dashboard: <https://www.catchments.ie/data/#/dashboard/waterquality>

Introduction

Water Quality
Summary

High Status
Objectives

Water Quality
Changes

WFD Risk

Significant
Pressures

Action

Summary
Information

High Status Objective Waterbodies

High status waters are prioritised for protection and action.

There are five waterbodies with a **High Ecological Status Objective (HSO)** in the Colligan-Mahon Catchment, one of which is not meeting its environmental objective of High.

Grants for septic tank upgrades may be available in high status objective catchment areas - you can learn more and check your Eircode for eligibility here: <https://www.gov.ie/en/publication/6cc1e-domestic-waste-water-treatment-systems-septic-tanks>

[View HSO river waterbodies in this catchment.](#)

See *Status and Risk / High Status Objective* for other waterbody types.

Water Quality Status - High Status Objective Waterbodies

Select Type:

All Surface Waters

Scale: Catchment Local Authority

17 Colligan-Mahon

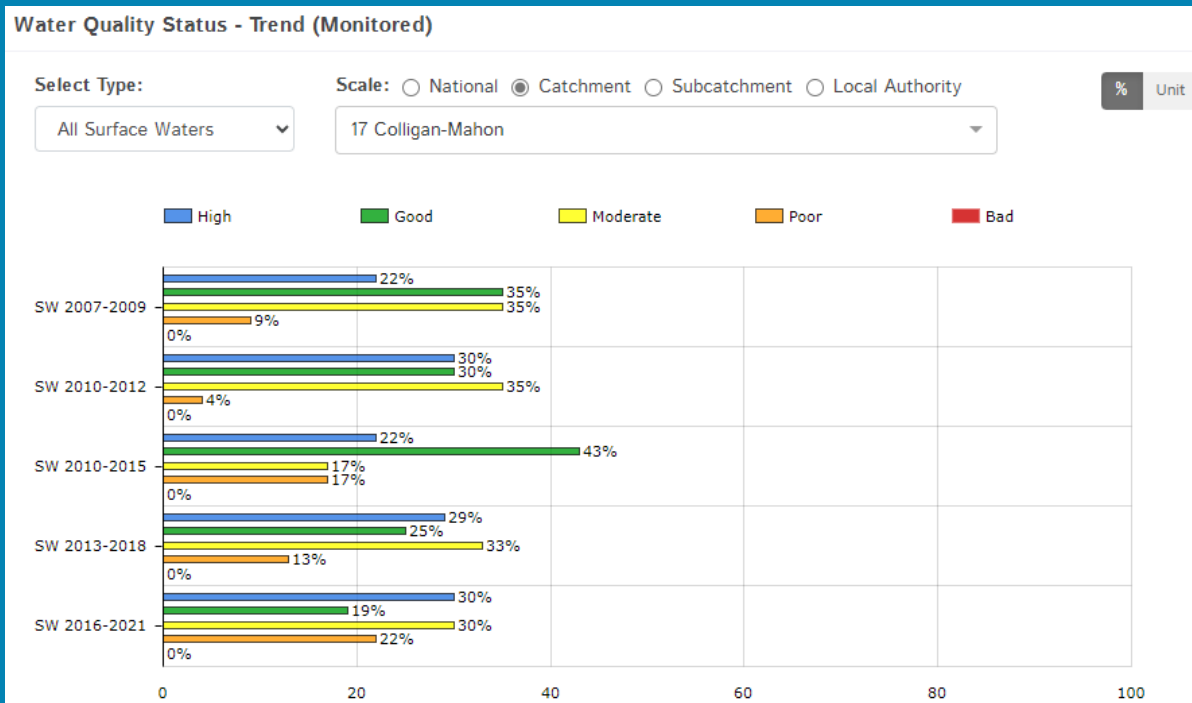
	SW 2007-2009	SW 2010-2012	SW 2010-2015	SW 2013-2018	SW 2016-2021
COLLIGAN_020 (River)	High	High	High	Moderate	Moderate
DALLIGAN_010 (River)	High	High	High	High	High
MAHON_010 (River)	High	Moderate	High	High	High
TAY_010 (River)	High	High	Good	Good	High
Tramore Back Strand (Coastal)	High	High	High	High	High

Water quality status for High Ecological Status Objective waterbodies.

View Online Dashboard: <https://www.catchments.ie/data/#/dashboard/waterquality>

Water Quality Changes

Below illustrates the changes in ecological status in monitored surface waterbodies over the last five monitoring cycles in the Colligan-Mahon Catchment. Nationally while there have been improvements in some waterbodies, these have been offset by declines elsewhere.



Ecological status trends for monitored surface waterbodies over the last five monitoring cycles in the Colligan-Mahon Catchment.

View online dashboard: <https://www.catchments.ie/data/#/dashboard/waterquality>

A total of 36 (56%) waterbodies are currently meeting their environmental objective of Good or High Ecological Status.

	Total	Achieving Environmental Objectives (2016-2021)	High Status Environmental Objectives Waterbodies	Achieving High Status Environmental Objectives (2016-2021)
Rivers	35	17 (49%)	4	3 (75%)
Canals	-	-	-	-
Lakes	2	0 (0%)	0	0 (0%)
Transitional	5	0 (0%)	0	0 (0%)
Coastal	7	5 (71%)	1	1 (100%)
Groundwater	15	14 (93%)	0	0 (0%)

Introduction

Water Quality Summary

High Status Objectives

Water Quality Changes

WFD Risk

Significant Pressures

Action

Summary Information

Introduction

Water Quality
Summary

High Status
Objectives

Water Quality
Changes

WFD Risk

Significant
Pressures

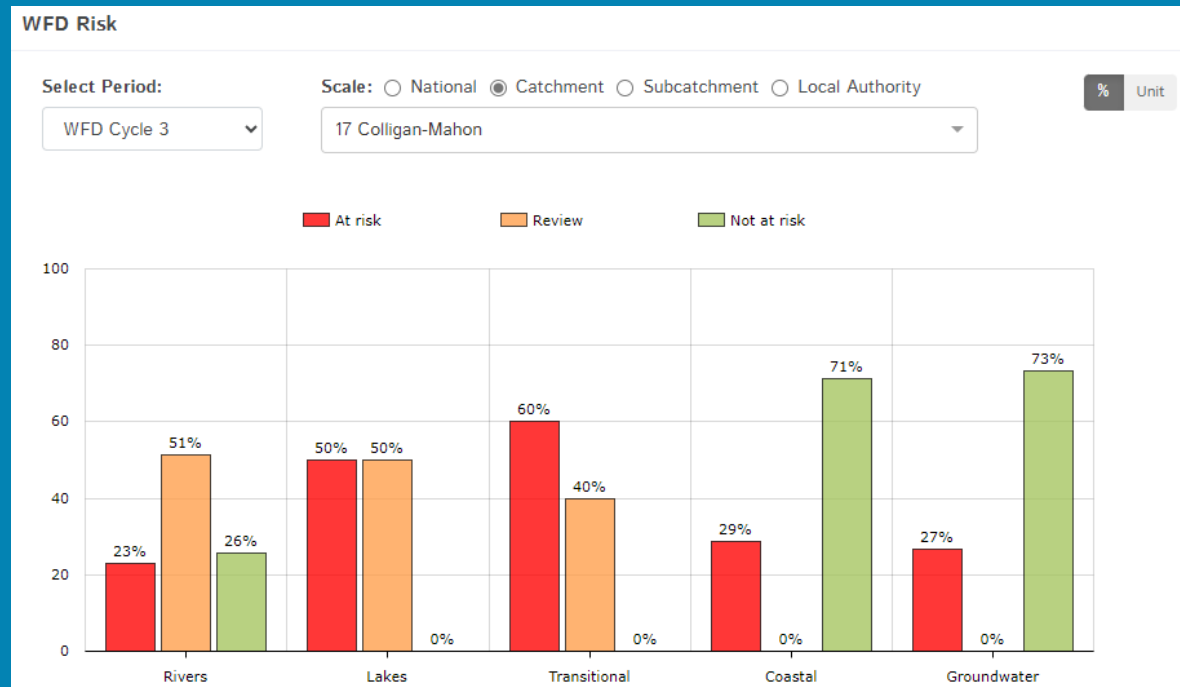
Action

Summary
Information

WFD Risk

A total of 18 (28%) waterbodies are *At Risk* of not meeting their environmental objective in the Colligan-Mahon Catchment, while 21 (33%) are under *Review* and 25 (39%) are *Not At Risk*.

Go to [EPA Water Map](#) to see
WFD Risk for this catchment



WFD Risk for the Colligan-Mahon Catchment based on 2016-2021 data.

View Online Dashboard: <https://www.catchments.ie/data/#/dashboard/waterquality>

There are currently no heavily modified water bodies (HMWBs) in the Colligan-Mahon Catchment.

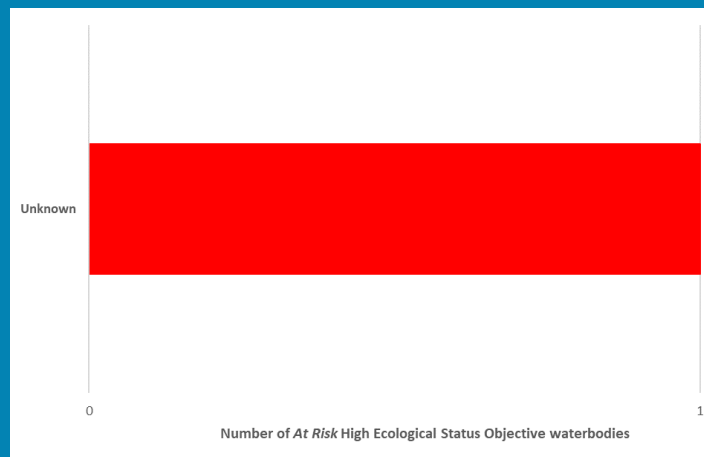
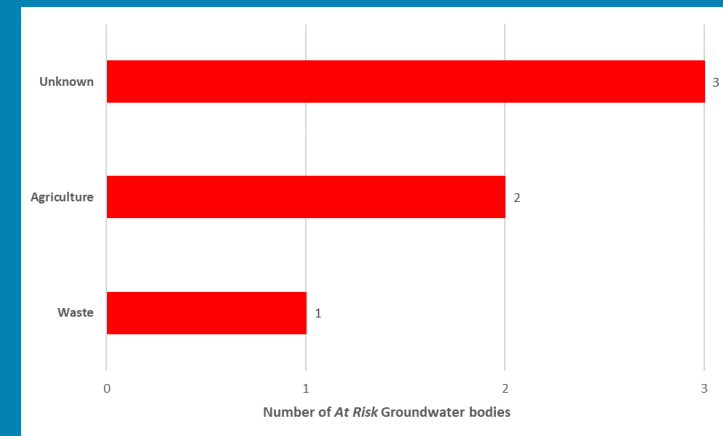
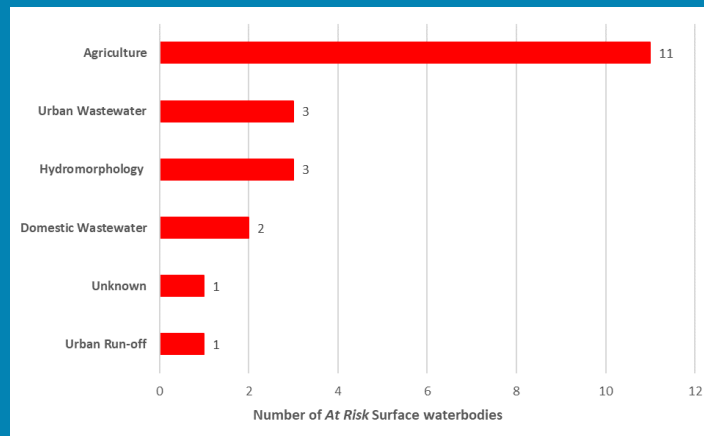
There are no artificial waterbodies in the Colligan-Mahon Catchment.

The [EPA's characterisation outcome report](#) has more information on WFD Risk

Click [here](#) for more information on significant pressures

Significant Pressures driving risk

Significant pressure types impacting the 14 *At Risk* surface waterbodies and four groundwater bodies are broken down in the figures below, including significant pressure information for the one *At Risk* High Ecological Status Objective waterbody.



The issues driven by these pressures are mainly nutrient pollution, organic pollution and altered morphological condition (habitat) impacts for surface water, and nutrient pollution, chemical quality diminution for surface water and chemical pollution for groundwaters. For more information, see <https://www.catchments.ie/data/#/dashboard/pressure?k=i351zs>.

Go to the Summary Information section to get significant pressure and issue data for At Risk waterbodies within the Colligan-Mahon Catchment.

Introduction

Water Quality Summary

High Status Objectives

Water Quality Changes

WFD Risk

Significant Pressures

Action

Summary Information

Introduction

Water Quality
Summary

High Status
Objectives

Water Quality
Changes

WFD Risk

Significant
Pressures

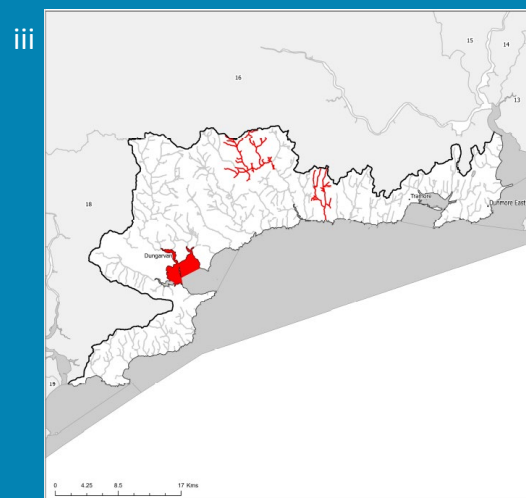
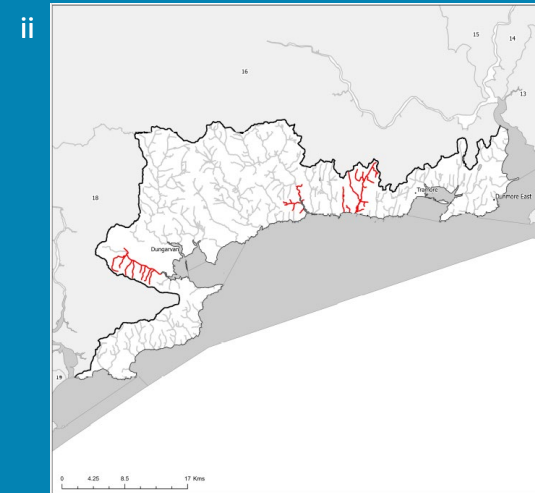
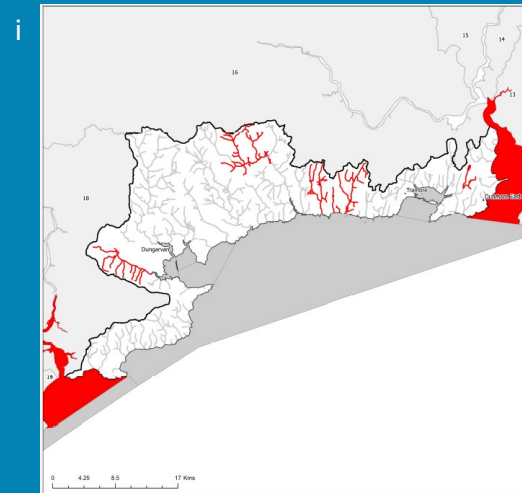
Action

Summary
Information

Significant Pressures

Agriculture is the top significant pressure impacting 72% of the 18 *At Risk* waterbodies within the Colligan-Mahon Catchment, followed by 17% impacted by both hydromorphological pressures and urban wastewater.

River Waterbody
Significant Pressure in Waterbody At Risk
Other Waterbodies
Lake, Coastal and Transitional Waterbody
Significant Pressure in Waterbody At Risk
Other Waterbodies



The catchments.ie dashboards will show all significant pressures identified for this catchment.

www.catchments.ie/data/#/dashboard/pressure

Go to the [EPA Water Maps](#) for the locations of all significant pressure types identified for this catchment

Locations of At Risk surface waterbodies impacted by i) Agriculture, ii) Hydromorphological Pressures and iii) Urban Wastewater.

Introduction

Water Quality
Summary

High Status
Objectives

Water Quality
Changes

WFD Risk

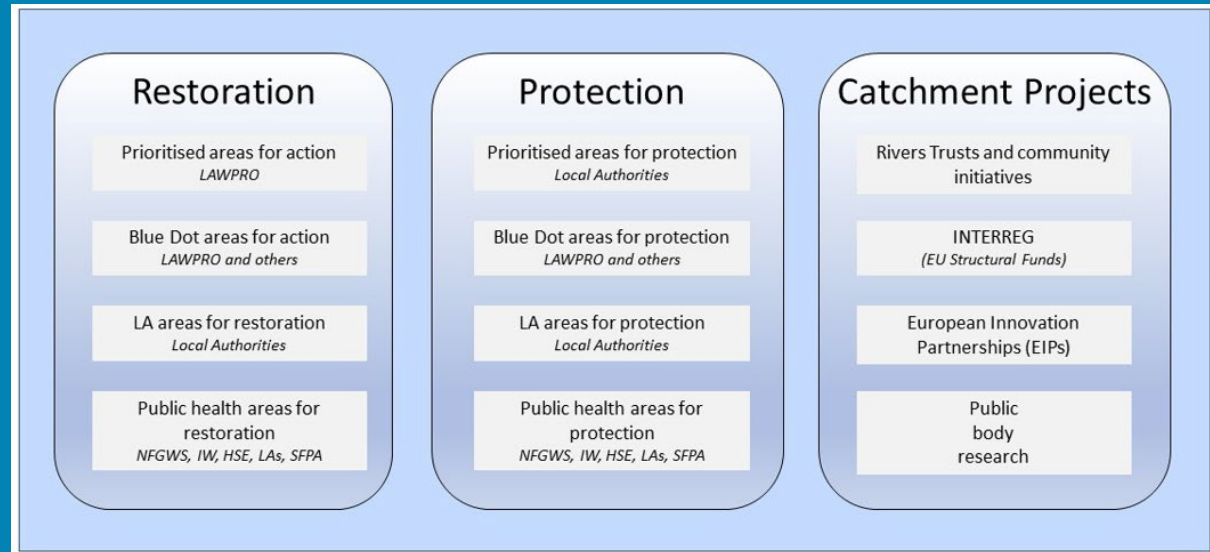
Significant
Pressures

Action

Summary
Information

Priority Areas for Action

A number of waterbodies have been prioritised through the selection of Areas for Action. There were four Priority Areas for Action identified for the second river basin management planning cycle in the Colligan-Mahon Catchment. This has increased to a total of five Areas for Restoration for the third cycle. ***Go to the summary information section to get Area for Action information for waterbodies within the Colligan-Mahon Catchment.***



Types of Areas for Action under the third cycle River Basin Management Plan

- View the current progress of Areas for Action and Summary Reports completed by LAWPRO, on catchments.ie and the EPA Water Map:
 - <https://www.catchments.ie/data/#/areaforaction>
 - https://gis.epa.ie/EPAMaps/default?eastings=?&northing=?&lid=EPA:WFD_AreasForAction
- LAWPRO have also published detailed desktop studies on Prioritised Areas for Action (PAAs) which are available their website: <https://lawaters.ie/desktop-studies/>
- Information on Areas for Action for the second cycle is available in Cycle 2 Catchment Assessments which have been archived on catchments.ie:
<https://www.catchments.ie/download/cycle-2-catchment-assessments-published-september-2018/>

Introduction

Water Quality
Summary

High Status
Objectives

Water Quality
Changes

WFD Risk

Significant
Pressures

Action

Summary
Information

Summary information for all waterbodies in the Colligan-Mahon Catchment

The next page provides a table with a breakdown of key information for all waterbodies in this catchment. The key is provided below. Additional information for each waterbody is available on <https://www.catchments.ie/data>, including a breakdown of status, a monitoring schedule for monitored waterbodies and downloadable chemistry results, where available.

Protected Area categories	BW: Bathing Water DW: Drinking Water Fish: Salmonid Waters NSA: Nutrient Sensitive Areas SAC: Special Area of Conservation, Natura 2000 (water dependent habitats and species) SF: Shellfish Area SPA: Special Area of Protection, Natura 2000 (water dependent habitat and species)
Significant pressure* types categories <i>* For At Risk waterbodies only</i>	Ab: Abstractions Ag: Agriculture Aq: Aquaculture At: Atmospheric DWW: Domestic Wastewater For: Forestry HPS: Historically polluted sites HYMO: Hydromorphology Ind: Industry IS: Invasive Species M+Q: Mines and Quarries Peat: Peat Drainage and Extraction UR: Urban Run-Off UWW: Urban Wastewater Was: Waste WT: Water Treatment

Catchment Code	Waterbody (WB) Code	WB Name	WB Type	Local Authority	Protected Area	Status 10-15	Status 13-18	Status 16-21	Environmental Objective	Environmental Objective Date	WFD Risk 16-21	Significant Issue(s)	Significant Pressure(s)	Area for Action (AFA)	AFA (lead, type)	Link to WB page on catchments.ie	Link to WB on EPA Water Map
13, 17	IE_SE_050_0000	Eastern Celtic Sea (HAs 13;17)	Coastal	Wexford County Council	BW; SAC; SPA;	Unassigned	Good	High	Good	2021 or earlier	Not at risk					View WB Page	View WB on EPA Water Map
13, 17	IE_SE_100_0000	Waterford Harbour	Coastal	Waterford City & County Council	BW; SAC; SF;	Good	Moderate	Moderate	Good	2022-2027	At risk	Nutrients	UR, Ag	Waterford Harbour	LAWPRO, Restoration	View WB Page	View WB on EPA Water Map
17	IE_SE_110_0000	Tramore Bay	Coastal	Waterford City & County Council	BW; SAC; SPA;	Unassigned	High	Good	Good	2021 or earlier	Not at risk					View WB Page	View WB on EPA Water Map
17	IE_SE_120_0000	Tramore Back Strand	Coastal	Waterford City & County Council	SAC; SPA;	High	High	High	High	2021 or earlier	Not at risk					View WB Page	View WB on EPA Water Map
17	IE_SE_140_0000	Dungarvan Harbour	Coastal	Waterford City & County Council	BW; SAC; SPA; SF;	High	High	Good	Good	2021 or earlier	Not at risk					View WB Page	View WB on EPA Water Map
17, 19, 20	IE_SW_010_0000	Western Celtic Sea (HAs 18;19;20)	Coastal	Cork County Council	BW; SAC; SPA;	Unassigned	High	High	Good	2021 or earlier	Not at risk					View WB Page	View WB on EPA Water Map
17, 18, 19	IE_SW_020_0000	Youghal Bay	Coastal	Cork County Council	BW; SAC; SPA; SF; NSA;	Good	Moderate	Moderate	Good	2022-2027	At risk	Nutrients, Organic	Ag			View WB Page	View WB on EPA Water Map
17, 18	IE_SE_G_014	Ballyknock	Groundwater	Waterford City & County Council	DWPA; SAC	Good	Good	Good	Good	2021 or earlier	Not at risk					View WB Page	View WB on EPA Water Map
17, 18	IE_SE_G_052	Dungarvan	Groundwater	Waterford City & County Council	DWPA; SAC	Good	Good	Good	Good	2021 or earlier	Not at risk					View WB Page	View WB on EPA Water Map
17	IE_SE_G_055	Industrial Facility (P0156-01)	Groundwater	Waterford City & County Council	DWPA	Good	Good	Good	Good	2021 or earlier	Not at risk					View WB Page	View WB on EPA Water Map
16, 17	IE_SE_G_057	Dunmore East	Groundwater	Waterford City & County Council	DWPA; SAC	Good	Good	Good	Good	2021 or earlier	Not at risk					View WB Page	View WB on EPA Water Map
17, 18	IE_SE_G_073	Helvick Head	Groundwater	Waterford City & County Council	DWPA; SAC	Good	Good	Good	Good	2021 or earlier	Not at risk					View WB Page	View WB on EPA Water Map
16, 17, 18	IE_SE_G_085	Kilrion	Groundwater	Waterford City & County Council	DWPA; SAC	Good	Good	Good	Good	2021 or earlier	Not at risk					View WB Page	View WB on EPA Water Map
16, 17	IE_SE_G_146	Tramore	Groundwater	Waterford City & County Council	DWPA	Good	Good	Good	Good	2021 or earlier	At risk	Chemical, ChemicalQualityDiminution ForSW, Nutrients	Unknown, Ag			View WB Page	View WB on EPA Water Map
15, 16, 17	IE_SE_G_149	Waterford	Groundwater	Waterford City & County Council	DWPA; SAC	Good	Good	Good	Good	2021 or earlier	Not at risk					View WB Page	View WB on EPA Water Map
16, 17, 18	IE_SE_G_154	Comeragh	Groundwater	Waterford City & County Council	DWPA; SAC	Good	Good	Good	Good	2021 or earlier	Not at risk					View WB Page	View WB on EPA Water Map
17	IE_SE_G_178	Waste Facility (W0032-02)	Groundwater	Waterford City & County Council	DWPA	Poor	Poor	Poor	Good	2022-2027	At risk	ChemicalQualityDiminution ForSW, Nutrients	Was			View WB Page	View WB on EPA Water Map
16, 17, 18	IE_SW_G_025	Cappoquin Kiltorcan	Groundwater	Waterford City & County Council	DWPA; SAC	Good	Good	Good	Good	2021 or earlier	At risk	ChemicalQualityDiminution ForSW, Nutrients	Unknown, Ag			View WB Page	View WB on EPA Water Map
17, 18, 19, 22	IE_SW_G_037	Glenville	Groundwater	Cork County Council	DWPA; SAC	Good	Good	Good	Good	2021 or earlier	Not at risk					View WB Page	View WB on EPA Water Map
16, 17, 18	IE_SW_G_047	Knockmealdown	Groundwater	Waterford City & County Council	DWPA; SAC	Good	Good	Good	Good	2021 or earlier	Not at risk					View WB Page	View WB on EPA Water Map
17, 18	IE_SW_G_050	Lismore	Groundwater	Waterford City & County Council	DWPA; SAC	Good	Good	Good	Good	2021 or earlier	At risk	Nutrients	Unknown			View WB Page	View WB on EPA Water Map
17, 18	IE_SW_G_077	Tourig Group 3	Groundwater	Waterford City & County Council	DWPA; SAC	Good	Good	Good	Good	2021 or earlier	Not at risk					View WB Page	View WB on EPA Water Map
17	IE_SE_17_5	Belle	Lake	Waterford City & County Council		Moderate	Moderate	Moderate	Good	2022-2027	At risk	Nutrients	Ag			View WB Page	View WB on EPA Water Map
17	IE_SE_17_6	Ballinlough	Lake	Waterford City & County Council		Unassigned	Good	Moderate	Good	2022-2027	Review					View WB Page	View WB on EPA Water Map
17	IE_SE_17A010300	ARAGLIN (COLLIGAN)_010	River	Waterford City & County Council	SAC;	Good	High	High	Good	2021 or earlier	Not at risk			Colligan-Bricky-Dungarvan Harbour	LAWPRO, Restoration	View WB Page	View WB on EPA Water Map
17	IE_SE_17A050900	ADDRIGOOLE_010	River	Waterford City & County Council		Unassigned	Good	Good	Good	2021 or earlier	Review					View WB Page	View WB on EPA Water Map
17	IE_SE_17B010050	BRICKEY_010	River	Waterford City & County Council		Poor	Poor	Poor	Good	2022-2027	At risk	MicrobiologicalPollution, Nutrients	DWTS, Ag	Colligan-Bricky-Dungarvan Harbour	LAWPRO, Restoration	View WB Page	View WB on EPA Water Map
17	IE_SE_17B010090	BRICKEY_020	River	Waterford City & County Council	SPA;	Unassigned	Moderate	Poor	Good	2022-2027	At risk	Sediment, Nutrients	HYMO, Ag	Colligan-Bricky-Dungarvan Harbour	LAWPRO, Restoration	View WB Page	View WB on EPA Water Map
17	IE_SE_17B030100	BALLYVADEN_010	River	Waterford City & County Council	DWPA;	Unassigned	Good	Moderate	Good	2022-2027	Review					View WB Page	View WB on EPA Water Map
17	IE_SE_17B200760	BALLYLANGADON_010	River	Waterford City & County Council		Unassigned	High	Good	Good	2021 or earlier	Review					View WB Page	View WB on EPA Water Map
17	IE_SE_17B290990	BALLYGUNNERMORE_010	River	Waterford City & County Council	SAC; SPA;	Unassigned	Moderate	Moderate	Good	2022-2027	Review					View WB Page	View WB on EPA Water Map
17	IE_SE_17B400790	BALLYMABIN_010	River	Waterford City & County Council		Unassigned	Good	Moderate	Good	2022-2027	Review					View WB Page	View WB on EPA Water Map
17	IE_SE_17C010100	COLLIGAN_010	River	Waterford City & County Council	SAC;	Good	Good	Good	Good	2021 or earlier	Not at risk			Colligan-Bricky-Dungarvan Harbour	LAWPRO, Restoration	View WB Page	View WB on EPA Water Map
17	IE_SE_17C010150	COLLIGAN_020	River	Waterford City & County Council		High	Moderate	Moderate	High	2022-2027	At risk	UnknownImpactType	Unknown	Colligan-Bricky-Dungarvan Harbour	LAWPRO, Restoration	View WB Page	View WB on EPA Water Map
17	IE_SE_17C010180	COLLIGAN_030	River	Waterford City & County Council		Unassigned	Unassigned	Good	Good	2021 or earlier	Review			Colligan-Bricky-Dungarvan Harbour	LAWPRO, Restoration	View WB Page	View WB on EPA Water Map
17	IE_SE_17C010300	COLLIGAN_040	River	Waterford City & County Council	SPA;	Moderate	Good	Good	Good	2021 or earlier	Not at risk			Colligan-Bricky-Dungarvan Harbour	LAWPRO, Restoration	View WB Page	View WB on EPA Water Map
17	IE_SE_17C390620	CUSHCAM_010	River	Waterford City & County Council		Unassigned	Poor	Moderate	Good	2022-2027	Review			Colligan-Bricky-Dungarvan Harbour	LAWPRO, Restoration	View WB Page	View WB on EPA Water Map
17	IE_SE_17D010300	DALLIGAN_010	River	Waterford City & County Council	SAC;	High	High	High	High	2021 or earlier	Not at risk					View WB Page	View WB on EPA Water Map
17	IE_SE_17D020300	DUNHILL_010	River	Waterford City & County Council	SPA;	Poor	Moderate	Poor	Good	2022-2027	At risk	Morphological, Nutrients, Organic	Ag, HYMO, DWTS	Dunhill	LAWPRO, Restoration	View WB Page	View WB on EPA Water Map

17	IE_SE_17D030100	DEELISH STREAM_010	River	Waterford City & County Council	DWPA; SAC; SPA;	Unassigned	Unassigned	Moderate	Good	2022-2027	Review			Colligan-Bricky-Dungarvan Harbour	LAWPRO, Restoration	View WB Page	View WB on EPA Water Map
17	IE_SE_17D090400	DUFFCARRICK_010	River	Waterford City & County Council		Unassigned	Poor	Moderate	Good	2022-2027	Review					View WB Page	View WB on EPA Water Map
17	IE_SE_17F050990	FAHA (Waterford)_010	River	Waterford City & County Council	SPA;	Unassigned	Good	Moderate	Good	2022-2027	Review					View WB Page	View WB on EPA Water Map
17	IE_SE_17F070820	FENNOR_NORTH_010	River	Waterford City & County Council	SPA;	Unassigned	Moderate	Good	Good	2021 or earlier	Review					View WB Page	View WB on EPA Water Map
17	IE_SE_17K030200	KILMURRIN COVE STREAM_010	River	Waterford City & County Council	SPA;	Unassigned	Moderate	Poor	Good	2022-2027	At risk	Nutrients, Organic	Ag, UWW	Dunhill	LAWPRO, Restoration	View WB Page	View WB on EPA Water Map
17	IE_SE_17K210690	COOLTEGIN_010	River	Waterford City & County Council	SAC;	Unassigned	Good	Good	Good	2021 or earlier	Review			Waterford Harbour	LAWPRO, Restoration	View WB Page	View WB on EPA Water Map
17	IE_SE_17K380650	KILLONGFORD_010	River	Waterford City & County Council	SPA;	Unassigned	Moderate	Good	Good	2021 or earlier	Review			Colligan-Bricky-Dungarvan Harbour	LAWPRO, Restoration	View WB Page	View WB on EPA Water Map
17	IE_SE_17K410990	KNOCKACURRIN_010	River	Waterford City & County Council	SAC;	Unassigned	Moderate	Poor	Good	2022-2027	Review			Waterford Harbour	LAWPRO, Restoration	View WB Page	View WB on EPA Water Map
17	IE_SE_17L010300	LEPERSTOWN STREAM_010	River	Waterford City & County Council		Poor	Poor	Poor	Good	2022-2027	At risk	Nutrients	Ag			View WB Page	View WB on EPA Water Map
17	IE_SE_17M010100	MAHON_010	River	Waterford City & County Council	SAC;	High	High	High	High	2021 or earlier	Not at risk			Mahon	LAWPRO, Restoration	View WB Page	View WB on EPA Water Map
17	IE_SE_17M010200	MAHON_020	River	Waterford City & County Council	SAC;	Poor	Moderate	Moderate	Good	2022-2027	At risk	Nutrients, Organic	Ag, UWW	Mahon	LAWPRO, Restoration	View WB Page	View WB on EPA Water Map
17	IE_SE_17M010300	MAHON_030	River	Waterford City & County Council		Unassigned	Unassigned	Moderate	Good	2022-2027	Review			Mahon	LAWPRO, Restoration	View WB Page	View WB on EPA Water Map
17	IE_SE_17M010350	MAHON_040	River	Waterford City & County Council	DWPA;	Good	Good	Poor	Good	2022-2027	At risk	Hydrological, Morphological	HYMO	Mahon	LAWPRO, Restoration	View WB Page	View WB on EPA Water Map
17	IE_SE_17M020200	MORRAGEN_010	River	Waterford City & County Council		Good	Good	Good	Good	2021 or earlier	Not at risk			Mahon	LAWPRO, Restoration	View WB Page	View WB on EPA Water Map
17	IE_SE_17M060970	MONLOUM_010	River	Waterford City & County Council	SAC; SPA;	Unassigned	Moderate	Moderate	Good	2022-2027	Review					View WB Page	View WB on EPA Water Map
17	IE_SE_17M100650	MAOIL AN CHOIRNIGH_010	River	Waterford City & County Council	DWPA; SPA;	Unassigned	High	Good	Good	2021 or earlier	Review					View WB Page	View WB on EPA Water Map
17	IE_SE_17S030780	AN_SCREATHAN_010	River	Waterford City & County Council	SPA;	Unassigned	High	Good	Good	2021 or earlier	Review					View WB Page	View WB on EPA Water Map
17	IE_SE_17T010050	TAY_010	River	Waterford City & County Council	SAC;	Good	Good	High	High	2021 or earlier	Not at risk			Tay (Stradbally Cove)	LAWPRO, Restoration	View WB Page	View WB on EPA Water Map
17	IE_SE_17T010250	TAY_020	River	Waterford City & County Council		Good	High	High	Good	2021 or earlier	Not at risk			Tay (Stradbally Cove)	LAWPRO, Restoration	View WB Page	View WB on EPA Water Map
17	IE_SE_17T010400	TAY_030	River	Waterford City & County Council	DWPA; SPA;	Good	Good	Good	Good	2021 or earlier	Not at risk			Tay (Stradbally Cove)	LAWPRO, Restoration	View WB Page	View WB on EPA Water Map
13, 14, 16, 17	IE_SE_100_0100	Barrow Suir Nore Estuary	Transitional	Wexford County Council	BW; SAC; SF;	Good	Moderate	Moderate	Good	2022-2027	At risk	Nutrients	Ag	Waterford Harbour	LAWPRO, Restoration	View WB Page	View WB on EPA Water Map
17	IE_SE_130_0100	Mahon Estuary	Transitional	Waterford City & County Council		Unassigned	Poor	Moderate	Good	2022-2027	Review					View WB Page	View WB on EPA Water Map
17	IE_SE_140_0100	Colligan Estuary	Transitional	Waterford City & County Council	SPA; SF;	Moderate	Poor	Moderate	Good	2022-2027	At risk	Nutrients	UWW	Colligan-Bricky-Dungarvan Harbour	LAWPRO, Restoration	View WB Page	View WB on EPA Water Map
17	IE_SE_140_0200	Brickey Estuary	Transitional	Waterford City & County Council	SPA;	Unassigned	Poor	Moderate	Good	2022-2027	Review			Colligan-Bricky-Dungarvan Harbour	LAWPRO, Restoration	View WB Page	View WB on EPA Water Map
17, 18	IE_SW_020_0100	Lower Blackwater M Estuary / Youghal Harbour	Transitional	Waterford City & County Council	SAC; SPA; NSA;	Moderate	Moderate	Moderate	Good	2022-2027	At risk	Nutrients, Organic	Ag			View WB Page	View WB on EPA Water Map