

Cycle 3

HA 14 Barrow Catchment Report, May 2024

Introduction

Water Quality Summary

High Status Objectives

Water Quality Changes

WFD Risk

Significant Pressures

Action

Summary Information

Introduction

This report provides an overview of the water quality in the Barrow Catchment and the pressures impacting on water quality. This report is based on data up to 2021. The latest water quality data, dashboards and maps throughout this report are available on catchments.ie and [EPA Water Map](https://epa.maps.ie).

The Barrow Catchment includes the area drained by the River Barrow upstream of the River Nore confluence and all streams entering tidal water between the Barrow railway bridge at Great Island and Ringwood, Co. Kilkenny, draining a total area of 3,025km². The largest urban centre in the catchment is Carlow. The other main urban centres in this catchment are New Ross, Graiguenamanagh, Athy, Portlaoise, Mountmellick, Portarlinton, Monasterevin and Kildare.

The Barrow Catchment is divided into 20 subcatchments with 149 river waterbodies, six transitional waterbodies and 50 groundwater bodies.

[View the Barrow Catchment on the EPA Water Map](https://epa.maps.ie)

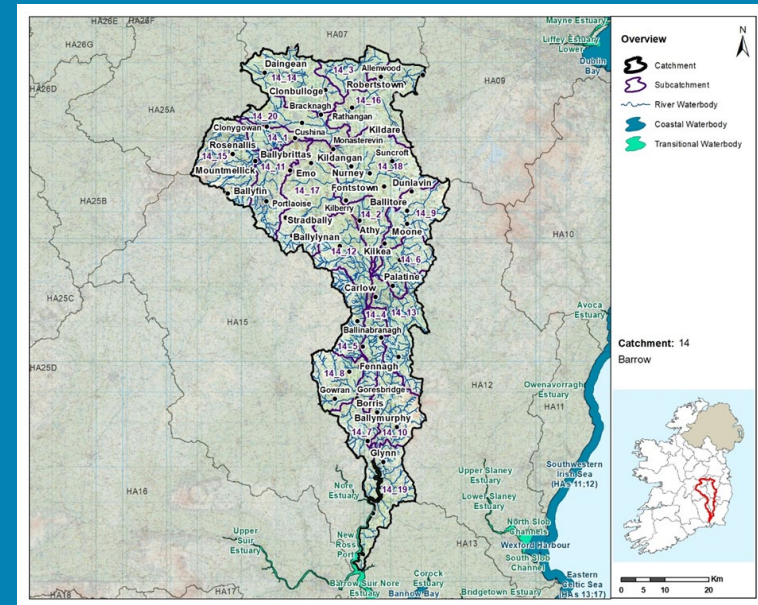
Previous Catchment Assessments

Previous catchment assessments, which provide additional historic context and information, are archived on catchments.ie:

- [Cycle 2 Catchment Assessments – published September 2018](#)
- [Cycle 3 Draft Catchment Assessments – published September 2021](#)

Online Dashboards

Links to online dashboards are provided in this report – these numbers may vary from those in this document as time progress and the online dashboards are updated based on the latest data and scientific assessments.



Overview of Subcatchments in the Barrow Catchment

Water Quality Summary

Introduction

Water Quality Summary

High Status Objectives

Water Quality Changes

WFD Risk

Significant Pressures

Action

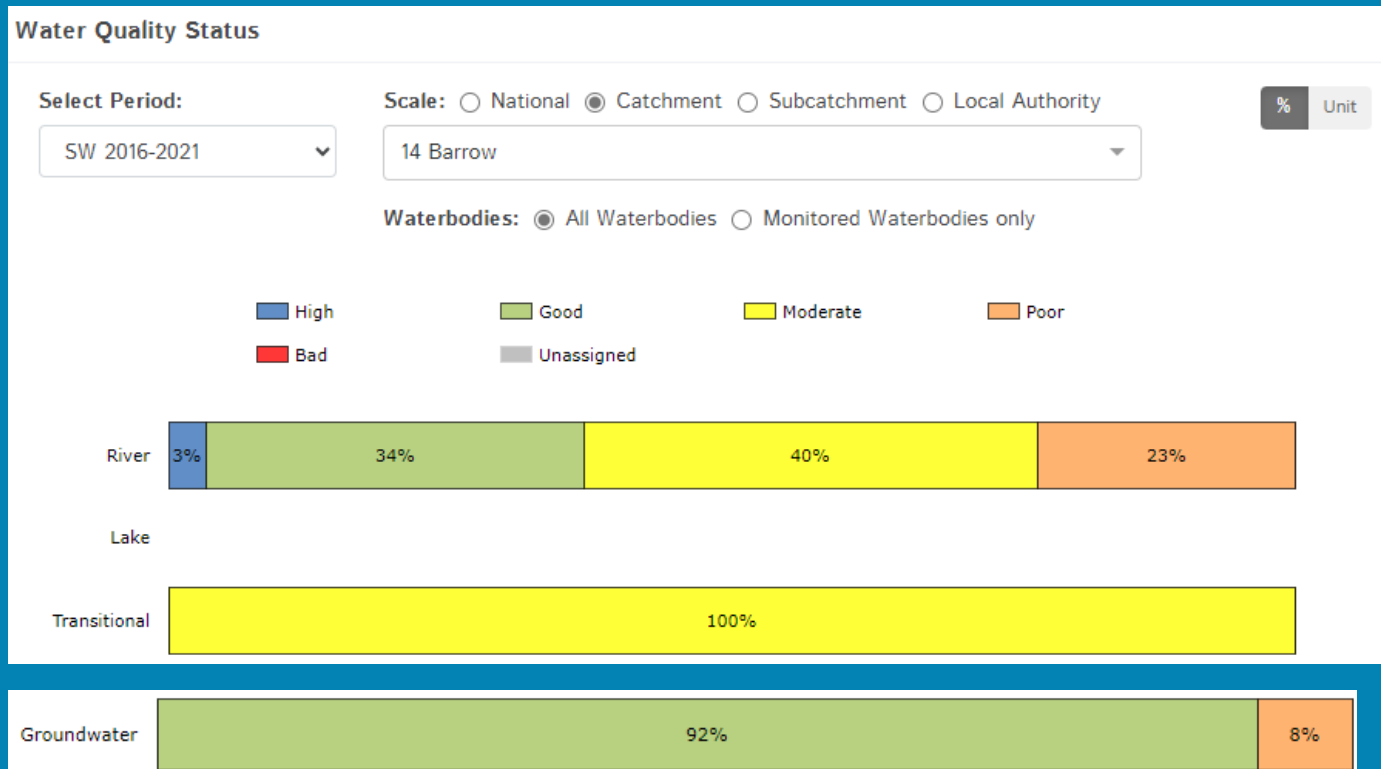
Summary Information

The dashboard below provides a breakdown of water quality status for surface and groundwater bodies in the Barrow Catchment.

A total of 36% of surface waterbodies were at Good or High Ecological Status in the 2016-2021 monitoring period. Ninety-two percent of groundwater bodies were at Good status.

Go to EPA Water Maps for WFD Status

[EPA Water Map](#)



Water quality status 2016-2021 for the Barrow Catchment. Note canals are also included under the river category.
View Online Dashboard: <https://www.catchments.ie/data/#/dashboard/waterquality>

High Status Objective Waterbodies

Introduction

High status waters are prioritised for protection and action.

There are three waterbodies with a **High Ecological Status Objective (HSO)** in the Barrow Catchment, with one currently not meeting its environmental objective of High.

Water Quality Summary

Grants for septic tank upgrades may be available in high status objective catchment areas - you can learn more and check your Eircode for eligibility here: <https://www.gov.ie/en/publication/6cc1e-domestic-waste-water-treatment-systems-septic-tanks>

[View HSO river waterbodies in this catchment.](#)

See *Status and Risk / High Status Objective* for other waterbody types.

High Status Objectives

Water Quality Changes

Water Quality Status - High Status Objective Waterbodies

Select Type:

All Surface Waters

Scale: Catchment Local Authority

14 Barrow

	SW 2007-2009	SW 2010-2012	SW 2010-2015	SW 2013-2018	SW 2016-2021
BARROW_010 (River)	Good	High	High	High	High
BURREN_010 (River)	Good	High	Good	Good	Good
DOUGLAS (LAOIS)_010 (River)	Good	Good	High	High	High

Water quality status for High Ecological Status Objective waterbodies.

View Online Dashboard: <https://www.catchments.ie/data/#/dashboard/waterquality>

WFD Risk

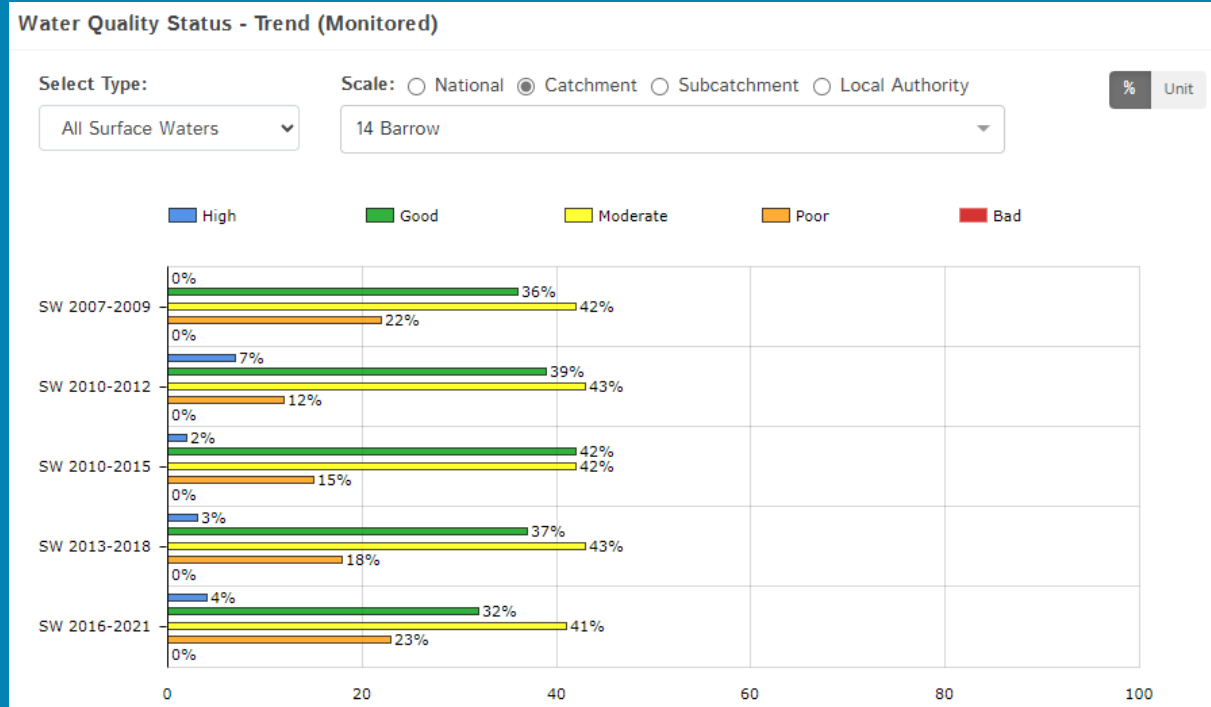
Significant Pressures

Action

Summary Information

Water Quality Changes

Below illustrates the changes in ecological status in monitored surface waterbodies over the last five monitoring cycles in the Barrow Catchment. Nationally while there have been improvements in some waterbodies, these have been offset by declines elsewhere.



Ecological status trends for monitored surface waterbodies over the last five monitoring cycles in the Barrow Catchment.

View online dashboard: <https://www.catchments.ie/data/#/dashboard/waterquality>

A total of 100 (49%) waterbodies are currently meeting their environmental objective of Good or High Ecological Status, and Good Ecological Potential for canals.

	Total	Achieving Environmental Objectives (2016-2021)	High Status Environmental Objectives Waterbodies	Achieving High Status Environmental Objectives (2016-2021)
Rivers	145	50 (35%)	3	2 (67%)
Canals	4	4 (100%)	0	0 (0%)
Lakes	-	-	-	-
Transitional	6	0 (0%)	0	0 (0%)
Coastal	-	-	-	-
Groundwater	50	46 (92%)	0	0 (0%)

Introduction

Water Quality Summary

High Status Objectives

Water Quality Changes

WFD Risk

Significant Pressures

Action

Summary Information

WFD Risk

Introduction

Water Quality Summary

High Status Objectives

Water Quality Changes

WFD Risk

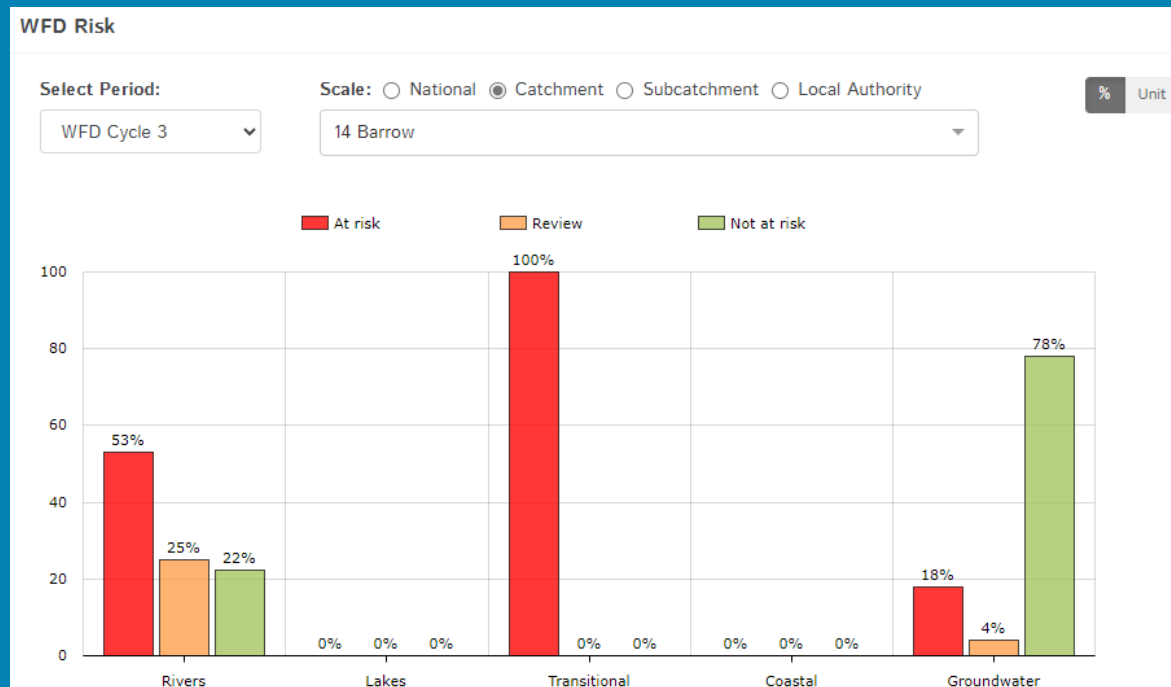
Significant Pressures

Action

Summary Information

A total of 94 (46%) waterbodies are *At Risk* of not meeting their environmental objective in the Barrow Catchment, while 39 (19%) are under *Review* and 72 (35%) are *Not At Risk*.

Go to [EPA Water Map](#) to see *WFD Risk for this catchment*



WFD Risk for the Barrow Catchment based on 2016-2021 data.

View Online Dashboard: <https://www.catchments.ie/data/#/dashboard/waterquality>

There are currently two heavily modified waterbodies (HMWBs) in the Barrow Catchment (New Ross Port and Lower Suir Estuary (Little Island - Cheekpoint)), both of which are *At Risk*.

There are four artificial waterbodies in the Barrow Catchment:

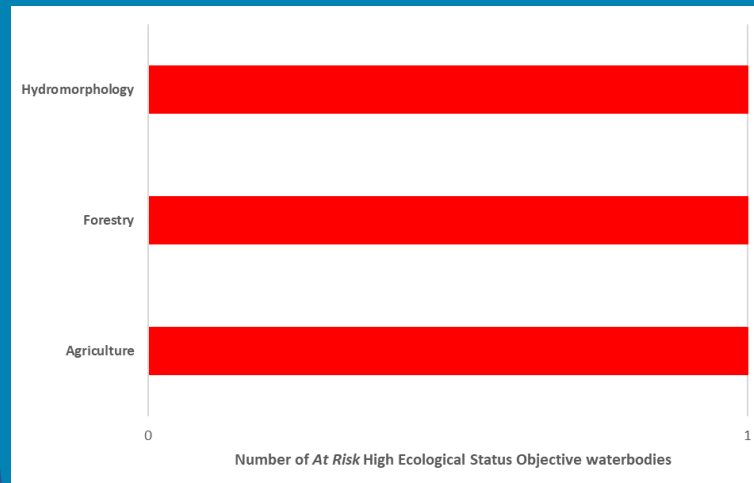
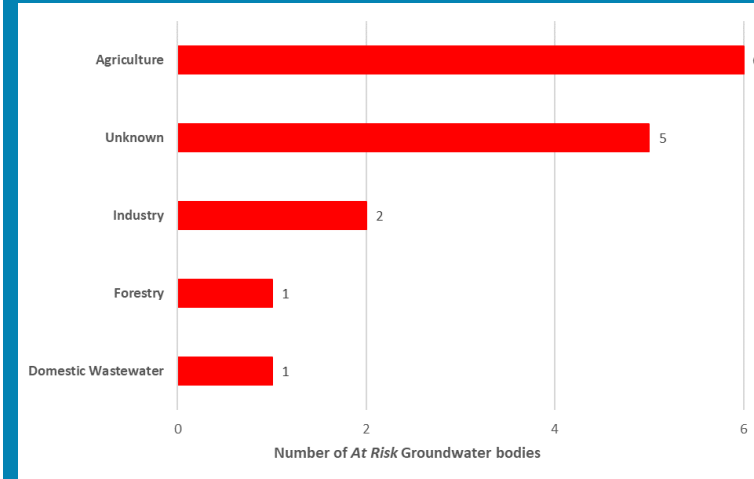
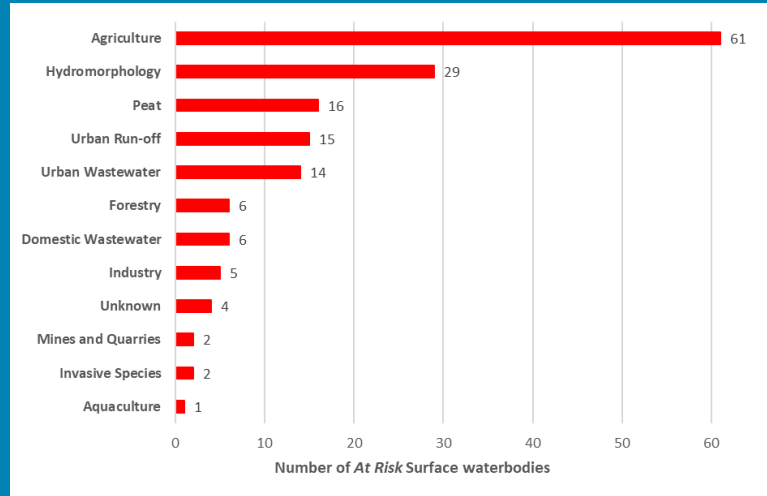
- Grand Canal Barrow Line (Barrow) (*Review*)
- Grand Canal Milltown Feeder (Barrow) (*Review*)
- Grand Canal Main Line East (Barrow) (*Not at Risk*)
- Grand Canal Main Line West (Barrow) (*Review*)

The [EPA's characterisation outcome report](#) has more information on WFD Risk

Click [here](#) for more information on significant pressures

Significant Pressures driving risk

Significant pressure types impacting the 85 *At Risk* surface waterbodies and nine groundwater bodies are broken down in the figures below, including significant pressure information for the one *At Risk* High Ecological Status Objective waterbody.



The issues driven by these pressures are mainly nutrient pollution, altered morphological condition (habitat) and organic pollution impacts for surface water, and nutrient pollution, chemical quality diminution for surface water and chemical pollution for groundwaters. For more information, see <https://www.catchments.ie/data/#/dashboard/pressure?k=i351zs>.

Go to the Summary Information section to get significant pressure and issue data for At Risk waterbodies within the Barrow Catchment.

Introduction

Water Quality Summary

High Status Objectives

Water Quality Changes

WFD Risk

Significant Pressures

Action

Summary Information

Introduction

Water Quality
Summary

High Status
Objectives

Water Quality
Changes

WFD Risk

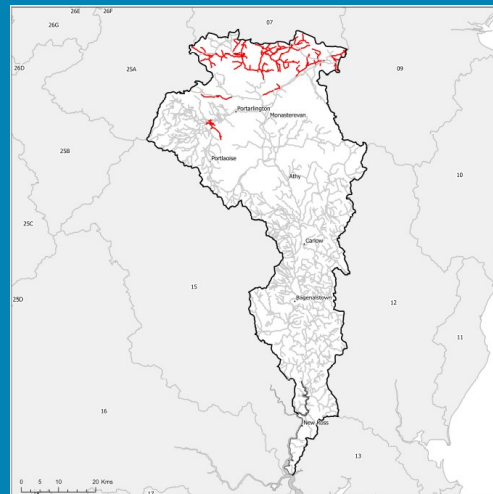
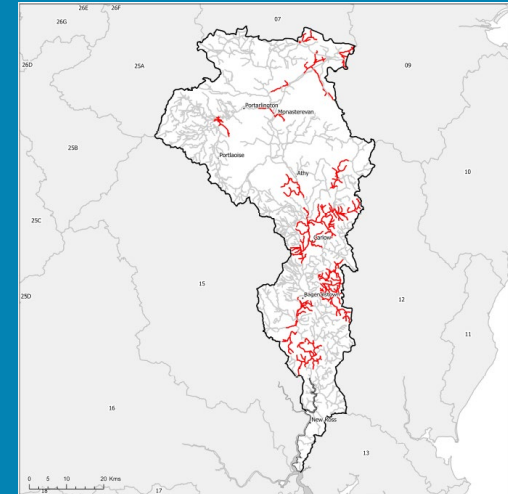
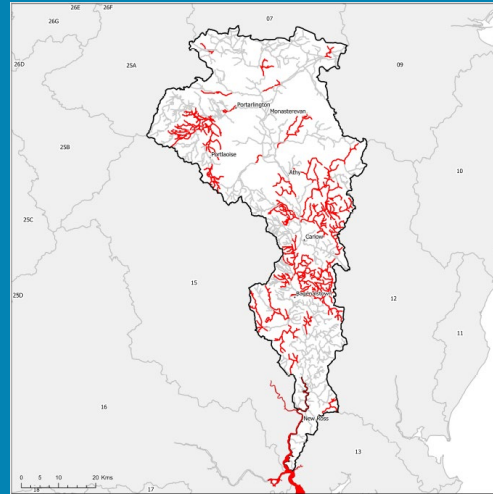
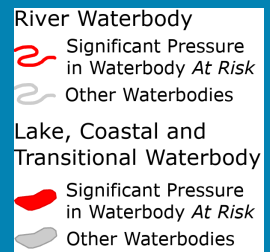
Significant
Pressures

Action

Summary
Information

Significant Pressures

Agriculture is the top significant pressure impacting 71% of the 94 *At Risk* waterbodies within the Barrow Catchment, followed by 31% impacted by hydromorphological pressures and 17% by peat.



The catchments.ie dashboards will show all significant pressures identified for this catchment.

www.catchments.ie/data/#/dashboard/pressure

Go to the [EPA Water Maps](#) for the locations of all significant pressure types identified for this catchment

Locations of At Risk surface waterbodies impacted by i) Agriculture, ii) Hydromorphological Pressures and iii) Peat.

Introduction

Water Quality
Summary

High Status
Objectives

Water Quality
Changes

WFD Risk

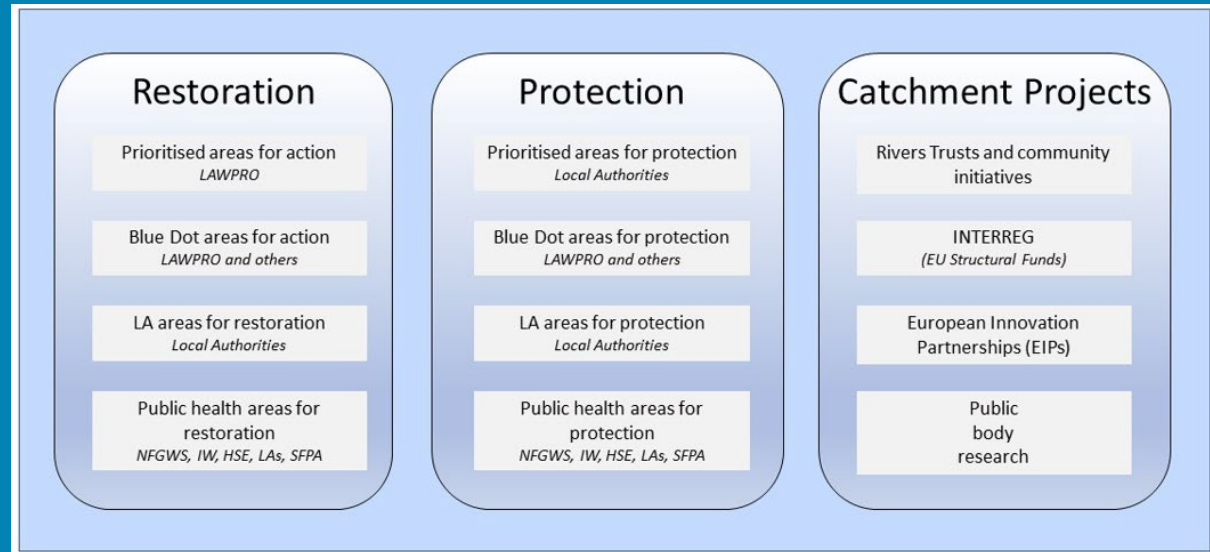
Significant
Pressures

Action

Summary
Information

Priority Areas for Action

A number of waterbodies have been prioritised through the selection of Areas for Action. There were six Priority Areas for Action identified for the second river basin management planning cycle in the Barrow Catchment. This has increased to a total of 21 Areas for Restoration, four Areas for Protection and two Catchment Projects for the third cycle. ***Go to the summary information section to get Area for Action information for waterbodies within the Barrow Catchment.***



Types of Areas for Action under the third cycle River Basin Management Plan

- View the current progress of Areas for Action and Summary Reports completed by LAWPRO, on catchments.ie and the EPA Water Map:
 - <https://www.catchments.ie/data/#/areaforaction>
 - https://gis.epa.ie/EPAMaps/default?easting=?&northing=?&lid=EPA:WFD_AreasForAction
- LAWPRO have also published detailed desktop studies on Prioritised Areas for Action (PAAs) which are available their website: <https://lawaters.ie/desktop-studies/>
- Information on Areas for Action for the second cycle is available in Cycle 2 Catchment Assessments which have been archived on catchments.ie: <https://www.catchments.ie/download/cycle-2-catchment-assessments-published-september-2018/>

Introduction

Water Quality
Summary

High Status
Objectives

Water Quality
Changes

WFD Risk

Significant
Pressures

Action

Summary
Information

Summary information for all waterbodies in the Barrow Catchment

The next page provides a table with a breakdown of key information for all waterbodies in this catchment. The key is provided below. Additional information for each waterbody is available on <https://www.catchments.ie/data>, including a breakdown of status, a monitoring schedule for monitored waterbodies and downloadable chemistry results, where available.

Protected Area categories	BW: Bathing Water DW: Drinking Water Fish: Salmonid Waters NSA: Nutrient Sensitive Areas SAC: Special Area of Conservation, Natura 2000 (water dependent habitats and species) SF: Shellfish Area SPA: Special Area of Protection, Natura 2000 (water dependent habitat and species)
Significant pressure* types categories <i>* For At Risk waterbodies only</i>	Ab: Abstractions Ag: Agriculture Aq: Aquaculture At: Atmospheric DWW: Domestic Wastewater For: Forestry HPS: Historically polluted sites HYMO: Hydromorphology Ind: Industry IS: Invasive Species M+Q: Mines and Quarries Peat: Peat Drainage and Extraction UR: Urban Run-Off UWW: Urban Wastewater Was: Waste WT: Water Treatment

Catchment Code	Waterbody (WB) Code	WB Name	WB Type	Local Authority	Protected Area	Status 10-15	Status 13-18	Status 16-21	Environmental Objective	Environmental Objective Date	WFD Risk 16-21	Significant Issue(s)	Significant Pressure(s)	Area for Action (AFA)	AFA (lead, type)	Link to WB page on catchments.ie	Link to WB on EPA Water Map
14	IE_14_AWB_GCBL	Grand Canal Barrow Line (Barrow)	Canal	Kildare County Council	SAC; NSA;	Good	Good	Good	Good	2021 or earlier	Review					View WB Page	View WB on EPA Water Map
14	IE_14_AWB_GCMF	Grand Canal Milltown Feeder (Barrow)	Canal	Kildare County Council	SAC;	Moderate	Good	Good	Good	2021 or earlier	Review					View WB Page	View WB on EPA Water Map
14	IE_14_AWB_GCMLE	Grand Canal Main Line East (Barrow)	Canal	Kildare County Council	SAC;	Unassigned	Good	Good	Good	2021 or earlier	Not at risk					View WB Page	View WB on EPA Water Map
14	IE_14_AWB_GCMLW	Grand Canal Main Line West (Barrow)	Canal	Kildare County Council		Unassigned	Good	Good	Good	2021 or earlier	Review					View WB Page	View WB on EPA Water Map
14, 25A, 26F, 7	IE_EA_G_001	Athboy	Groundwater	Westmeath County Council	DWPA; SAC	Good	Good	Good	Good	2021 or earlier	Not at risk					View WB Page	View WB on EPA Water Map
14, 7, 8, 9	IE_EA_G_002	Trim	Groundwater	Meath County Council	DWPA; SAC	Good	Good	Good	Good	2021 or earlier	At risk	ChemicalQualityDiminution ForSW, Nutrients	DWTS, Unknown, Ag			View WB Page	View WB on EPA Water Map
10, 12, 14, 9	IE_EA_G_003	Kilcullen	Groundwater	Wicklow County Council	DWPA; SAC	Good	Good	Good	Good	2021 or earlier	At risk	ChemicalQualityDiminution ForSW, Nutrients	Ag, Unknown, For			View WB Page	View WB on EPA Water Map
14, 7, 8, 9	IE_EA_G_008	Dublin	Groundwater	South Dublin County Council	DWPA; SAC	Good	Good	Good	Good	2021 or earlier	Review					View WB Page	View WB on EPA Water Map
14, 9	IE_EA_G_017	Curragh Gravels East	Groundwater	Kildare County Council	DWPA; SAC	Good	Good	Good	Good	2021 or earlier	Not at risk					View WB Page	View WB on EPA Water Map
12, 14, 9	IE_EA_G_046	Gormanstown Gravels	Groundwater	Wicklow County Council	DWPA	Good	Good	Good	Good	2021 or earlier	Not at risk					View WB Page	View WB on EPA Water Map
14, 25A, 7	IE_EA_G_074	GWDTE-Raheenmore Bog (SAC000582)	Groundwater	Offaly County Council	DWPA; SAC (GWDTE)	Good	Good	Good	Good	2021 or earlier	Not at risk					View WB Page	View WB on EPA Water Map
12, 13, 14	IE_SE_G_001	Adamstown	Groundwater	Wexford County Council	DWPA; SAC	Good	Good	Good	Good	2021 or earlier	Not at risk					View WB Page	View WB on EPA Water Map
14	IE_SE_G_005	Industrial Facility (P0274-01)	Groundwater	Laois County Council	DWPA; SAC	Poor	Poor	Poor	Good	2022-2027	At risk	Chemical, ChemicalQualityDiminution ForSW	Ind			View WB Page	View WB on EPA Water Map
14, 15, 16	IE_SE_G_009	Ballingarry	Groundwater	Kilkenny County Council	DWPA; SAC	Good	Good	Good	Good	2021 or earlier	Not at risk					View WB Page	View WB on EPA Water Map
10, 11, 12, 13, 14, 9	IE_SE_G_011	Ballyglass	Groundwater	Wicklow County Council	DWPA; SAC	Good	Good	Good	Good	2021 or earlier	At risk	ChemicalQualityDiminution ForSW, Nutrients	Unknown, Ag			View WB Page	View WB on EPA Water Map
14, 15, 16	IE_SE_G_021	Bennettsbridge	Groundwater	Kilkenny County Council	DWPA; SAC	Good	Good	Good	Good	2021 or earlier	Not at risk					View WB Page	View WB on EPA Water Map
14	IE_SE_G_023	Burren Valley Gravels	Groundwater	Carlow County Council	DWPA	Good	Good	Good	Good	2021 or earlier	Not at risk					View WB Page	View WB on EPA Water Map
14, 15, 25A, 25B	IE_SE_G_027	Camross	Groundwater	Laois County Council	DWPA; SAC	Good	Good	Good	Good	2021 or earlier	Not at risk					View WB Page	View WB on EPA Water Map
14, 15	IE_SE_G_034	Castlecomer	Groundwater	Kilkenny County Council	DWPA; SAC	Good	Good	Good	Good	2021 or earlier	Not at risk					View WB Page	View WB on EPA Water Map
14, 15	IE_SE_G_038	Clifden	Groundwater	Kilkenny County Council	DWPA; SAC	Good	Good	Good	Good	2021 or earlier	Not at risk					View WB Page	View WB on EPA Water Map
14, 15, 25A	IE_SE_G_039	Clonaslee	Groundwater	Laois County Council	DWPA; SAC	Good	Good	Good	Good	2021 or earlier	Not at risk					View WB Page	View WB on EPA Water Map
14, 15, 25B	IE_SE_G_047	Coolrain	Groundwater	Laois County Council	DWPA; SAC	Good	Good	Good	Good	2021 or earlier	Not at risk					View WB Page	View WB on EPA Water Map
14, 7	IE_SE_G_048	Cushina	Groundwater	Offaly County Council	DWPA; SAC	Good	Good	Good	Good	2021 or earlier	Not at risk					View WB Page	View WB on EPA Water Map
14, 25A, 7	IE_SE_G_049	Daingean	Groundwater	Offaly County Council	DWPA	Good	Good	Good	Good	2021 or earlier	Review					View WB Page	View WB on EPA Water Map
14, 15, 16	IE_SE_G_076	Inistioge	Groundwater	Kilkenny County Council	DWPA; SAC	Good	Good	Good	Good	2021 or earlier	Not at risk					View WB Page	View WB on EPA Water Map
14, 7, 9	IE_SE_G_077	Kildare	Groundwater	Kildare County Council	DWPA; SAC	Good	Good	Good	Good	2021 or earlier	Not at risk					View WB Page	View WB on EPA Water Map
14, 15, 16	IE_SE_G_078	Kilkenny	Groundwater	Kilkenny County Council	DWPA; SAC	Good	Good	Good	Good	2021 or earlier	At risk	ChemicalQualityDiminution ForSW, Nutrients	Unknown, Ag			View WB Page	View WB on EPA Water Map
14, 15	IE_SE_G_104	Newtown	Groundwater	Kilkenny County Council	DWPA; SAC	Good	Good	Good	Good	2021 or earlier	Not at risk					View WB Page	View WB on EPA Water Map
14, 9	IE_SE_G_106	GWDTE-Pollardstown Fen (SAC000396)	Groundwater	Kildare County Council	DWPA; SAC (GWDTE)	Good	Good	Good	Good	2021 or earlier	Not at risk					View WB Page	View WB on EPA Water Map
14, 15, 25A	IE_SE_G_107	Portlaoise	Groundwater	Laois County Council	DWPA; SAC	Good	Good	Good	Good	2021 or earlier	Not at risk					View WB Page	View WB on EPA Water Map
14, 15, 16, 25B	IE_SE_G_114	Rathdowney	Groundwater	Laois County Council	DWPA; SAC	Good	Good	Good	Good	2021 or earlier	Not at risk					View WB Page	View WB on EPA Water Map
14, 25A, 7	IE_SE_G_116	Rhode	Groundwater	Offaly County Council	DWPA	Good	Good	Good	Good	2021 or earlier	Not at risk					View WB Page	View WB on EPA Water Map
14, 15, 25A	IE_SE_G_118	Rosenallis	Groundwater	Laois County Council	DWPA; SAC	Good	Good	Good	Good	2021 or earlier	Not at risk					View WB Page	View WB on EPA Water Map
14, 15	IE_SE_G_124	Shanragh	Groundwater	Laois County Council	DWPA; SAC	Good	Good	Good	Good	2021 or earlier	Not at risk					View WB Page	View WB on EPA Water Map
14, 9	IE_SE_G_133	Curragh Gravels West	Groundwater	Kildare County Council	DWPA; SAC	Good	Good	Good	Good	2021 or earlier	Not at risk					View WB Page	View WB on EPA Water Map
14, 15, 16	IE_SE_G_135	Thomastown	Groundwater	Kilkenny County Council	DWPA; SAC	Good	Good	Good	Good	2021 or earlier	Not at risk					View WB Page	View WB on EPA Water Map
14	IE_SE_G_144	Timahoe Gravels	Groundwater	Laois County Council	DWPA	Good	Good	Good	Good	2021 or earlier	Not at risk					View WB Page	View WB on EPA Water Map
12, 13, 14, 15, 9	IE_SE_G_152	New Ross	Groundwater	Carlow County Council	DWPA; SAC	Good	Good	Good	Good	2021 or earlier	Not at risk					View WB Page	View WB on EPA Water Map
14, 15, 25A, 7	IE_SE_G_153	Bagenalstown Upper	Groundwater	Laois County Council	DWPA; SAC	Good	Good	Good	Good	2021 or earlier	Not at risk					View WB Page	View WB on EPA Water Map

14, 15, 16	IE_SE_G_156	Durrow	Groundwater	Kilkenny County Council	DWPA; SAC	Good	Poor	Poor	Good	2022-2027	At risk	Nutrients	Ag			View WB Page	View WB on EPA Water Map
14, 15	IE_SE_G_157	Bagenalstown Lower	Groundwater	Carlow County Council	DWPA; SAC	Good	Good	Good	Good	2021 or earlier	Not at risk					View WB Page	View WB on EPA Water Map
14, 15, 16	IE_SE_G_159	Clifden South	Groundwater	Kilkenny County Council	DWPA; SAC	Good	Good	Good	Good	2021 or earlier	Not at risk					View WB Page	View WB on EPA Water Map
14	IE_SE_G_160	Athy-Bagenalstown Gravels	Groundwater	Laois County Council	DWPA; SAC	Good	Good	Poor	Good	2022-2027	At risk	Nutrients	Ag			View WB Page	View WB on EPA Water Map
14, 15	IE_SE_G_165	Goresbridge North	Groundwater	Kilkenny County Council	DWPA; SAC	Good	Good	Good	Good	2021 or earlier	Not at risk					View WB Page	View WB on EPA Water Map
14, 15	IE_SE_G_166	Goresbridge South	Groundwater	Kilkenny County Council	DWPA; SAC	Good	Good	Good	Good	2021 or earlier	Not at risk					View WB Page	View WB on EPA Water Map
14, 9	IE_SE_G_167	Usk Gravels	Groundwater	Kildare County Council	DWPA	Good	Good	Good	Good	2021 or earlier	Not at risk					View WB Page	View WB on EPA Water Map
14	IE_SE_G_169	Rosenallis Gravels	Groundwater	Laois County Council	DWPA; SAC	Good	Good	Good	Good	2021 or earlier	Not at risk					View WB Page	View WB on EPA Water Map
14	IE_SE_G_170	Portlaoise-Mountmellick Gravels	Groundwater	Laois County Council	DWPA	Good	Good	Good	Good	2021 or earlier	Not at risk					View WB Page	View WB on EPA Water Map
14	IE_SE_G_173	Narraghmore Gravels	Groundwater	Kildare County Council	DWPA	Good	Good	Good	Good	2021 or earlier	At risk	Nutrients	Unknown			View WB Page	View WB on EPA Water Map
14, 9	IE_SE_G_177	Historic Waste Facility (S22-02443)	Groundwater	Kildare County Council	DWPA	Good	Good	Good	Good	2021 or earlier	Not at risk					View WB Page	View WB on EPA Water Map
14	IE_SE_G_180	Industrial Facility (P0322-01)	Groundwater	Laois County Council	DWPA		Poor	Poor	Good	2022-2027	At risk	Chemical	Ind			View WB Page	View WB on EPA Water Map
14, 25A, 25B	IE_SH_G_066	Clonaslee West	Groundwater	Laois County Council	DWPA; SAC	Good	Good	Good	Good	2021 or earlier	Not at risk					View WB Page	View WB on EPA Water Map
14, 25A, 25B, 7	IE_SH_G_103	Geashill	Groundwater	Offaly County Council	DWPA; SAC	Good	Good	Good	Good	2021 or earlier	Not at risk					View WB Page	View WB on EPA Water Map
14, 15, 25A, 25B	IE_SH_G_210	Slieve Bloom North	Groundwater	Laois County Council	DWPA; SAC	Good	Good	Good	Good	2021 or earlier	Not at risk					View WB Page	View WB on EPA Water Map
14	IE_SE_14A010840	Abbeylough_010	River	Kildare County Council		Unassigned	Poor	Moderate	Good	2022-2027	At risk	Morphological	Peat	Figile	LAWPRO, Restoration	View WB Page	View WB on EPA Water Map
14	IE_SE_14A020100	AGHALONA_010	River	Carlow County Council		Moderate	Moderate	Moderate	Good	2022-2027	At risk	Nutrients	Ag	Burren	LAWPRO, Restoration	View WB Page	View WB on EPA Water Map
14	IE_SE_14A020200	AGHALONA_020	River	Carlow County Council		Moderate	Moderate	Moderate	Good	2022-2027	At risk	Nutrients	Ag	Burren	LAWPRO, Restoration	View WB Page	View WB on EPA Water Map
14	IE_SE_14A040400	AUGHAVAUD_010	River	Carlow County Council	SAC;	Unassigned	Good	Good	Good	2021 or earlier	Review			Aughavaud	Carlow County Council, Protection	View WB Page	View WB on EPA Water Map
14	IE_SE_14A040600	AUGHAVAUD_020	River	Carlow County Council	SAC; NSA;	Good	Good	Good	Good	2021 or earlier	Not at risk			Aughavaud	Carlow County Council, Protection	View WB Page	View WB on EPA Water Map
14	IE_SE_14A050500	AUGHNABRISKY_010	River	Carlow County Council	SAC;	Good	Good	Good	Good	2021 or earlier	Not at risk			Mountain-Borris	LAWPRO, Restoration	View WB Page	View WB on EPA Water Map
14	IE_SE_14A060200	ATHY STREAM_010	River	Kildare County Council		Poor	Moderate	Moderate	Good	2022-2027	At risk	Morphological	Ag	Athy Stream	LAWPRO, Restoration	View WB Page	View WB on EPA Water Map
14	IE_SE_14A060400	ATHY STREAM_020	River	Kildare County Council		Moderate	Moderate	Poor	Good	2022-2027	At risk	Morphological, Nutrients	Ag	Athy Stream	LAWPRO, Restoration	View WB Page	View WB on EPA Water Map
14	IE_SE_14A060600	ATHY STREAM_030	River	Kildare County Council	SAC;	Unassigned	Moderate	Poor	Good	2022-2027	Review			Athy Stream	LAWPRO, Restoration	View WB Page	View WB on EPA Water Map
14	IE_SE_14A070300	AUGHNACREW_010	River	Wexford County Council		Moderate	Moderate	Moderate	Good	2022-2027	At risk	Nutrients	Ag			View WB Page	View WB on EPA Water Map
14	IE_SE_14A070500	AUGHNACREW_020	River	Wexford County Council	SAC;	Good	Good	Good	Good	2021 or earlier	Not at risk					View WB Page	View WB on EPA Water Map
14	IE_SE_14B010060	BARROW_010	River	Laois County Council	SAC;	High	High	High	High	2021 or earlier	Not at risk			Upper Barrow (Headwaters to Mountmellick)	LAWPRO, Restoration	View WB Page	View WB on EPA Water Map
14	IE_SE_14B010200	BARROW_020	River	Laois County Council	SAC;	Good	Good	Good	Good	2021 or earlier	Not at risk			Upper Barrow (Headwaters to Mountmellick)	LAWPRO, Restoration	View WB Page	View WB on EPA Water Map
14	IE_SE_14B010300	BARROW_030	River	Laois County Council	SAC;	Good	Good	Good	Good	2021 or earlier	Not at risk			Upper Barrow (Headwaters to Mountmellick)	LAWPRO, Restoration	View WB Page	View WB on EPA Water Map
14	IE_SE_14B010500	BARROW_040	River	Laois County Council	SAC;	Moderate	Moderate	Moderate	Good	2022-2027	At risk	Nutrients	Ag	Upper Barrow (Headwaters to Mountmellick)	LAWPRO, Restoration	View WB Page	View WB on EPA Water Map
14	IE_SE_14B010550	BARROW_050	River	Laois County Council	SAC; NSA;	Unassigned	Moderate	Moderate	Good	2022-2027	At risk	Hydrological, Morphological, Nutrients, Organic	Ag, HYMO, For, Peat	Barrow (Mountmellick to Portarlinton)	LAWPRO, Restoration	View WB Page	View WB on EPA Water Map
14	IE_SE_14B010700	BARROW_060	River	Laois County Council	SAC; NSA;	Good	Good	Good	Good	2021 or earlier	Review			Barrow (Mountmellick to Portarlinton)	LAWPRO, Restoration	View WB Page	View WB on EPA Water Map
14	IE_SE_14B010780	BARROW_070	River	Offaly County Council	SAC; NSA;	Good	Good	Poor	Good	2022-2027	At risk	Nutrients	Ag	Barrow (Mountmellick to Portarlinton)	LAWPRO, Restoration	View WB Page	View WB on EPA Water Map
14	IE_SE_14B010900	BARROW_080	River	Laois County Council	SAC; NSA;	Moderate	Moderate	Poor	Good	2022-2027	At risk	Nutrients, Organic	UR, UWW	Barrow (Mountmellick to Portarlinton)	LAWPRO, Restoration	View WB Page	View WB on EPA Water Map
14	IE_SE_14B011000	BARROW_090	River	Laois County Council	SAC; NSA;	Poor	Poor	Poor	Good	2022-2027	At risk	Hydrological, Morphological, Nutrients, OtherSignificantImpacts	UR, HYMO, IS	Barrow (Portarlinton to Monsterevin)	LAWPRO, Restoration	View WB Page	View WB on EPA Water Map
14	IE_SE_14B011130	BARROW_100	River	Kildare County Council	SAC; NSA;	Unassigned	Moderate	Moderate	Good	2022-2027	At risk	Morphological, Nutrients, Organic	UR, HYMO, UWW	Barrow (Portarlinton to Monsterevin)	LAWPRO, Restoration	View WB Page	View WB on EPA Water Map
14	IE_SE_14B011300	BARROW_110	River	Laois County Council	SAC; NSA;	Good	Good	Good	Good	2021 or earlier	Not at risk					View WB Page	View WB on EPA Water Map
14	IE_SE_14B011500	BARROW_120	River	Kildare County Council	SAC; NSA;	Good	Good	Good	Good	2021 or earlier	Not at risk					View WB Page	View WB on EPA Water Map
14	IE_SE_14B011600	BARROW_130	River	Kildare County Council	DWPA; SAC; NSA;	Unassigned	Poor	Poor	Good	2022-2027	Review			Athy Stream	LAWPRO, Restoration	View WB Page	View WB on EPA Water Map

14	IE_SE_14B011900	BARROW_140	River	Kildare County Council	SAC; NSA;	Moderate	Poor	Poor	Good	2022-2027	At risk	Hydrological, Morphological, Nutrients, OtherSignificantImpacts	HYMO, IS, Ag	Athy Stream	LAWPRO, Restoration	View WB Page	View WB on EPA Water Map
14	IE_SE_14B012000	BARROW_150	River	Kildare County Council	SAC; NSA;	Unassigned	Moderate	Moderate	Good	2022-2027	Review			Athy Stream	LAWPRO, Restoration	View WB Page	View WB on EPA Water Map
14	IE_SE_14B012460	BARROW_160	River	Laois County Council	SAC; NSA;	Moderate	Moderate	Moderate	Good	2022-2027	At risk	Hydrological, Morphological, UnknownImpactType	UR, HYMO	Burren	LAWPRO, Restoration	View WB Page	View WB on EPA Water Map
14	IE_SE_14B012600	BARROW_170	River	Carlow County Council	SAC; NSA;	Moderate	Moderate	Moderate	Good	2022-2027	At risk	Hydrological, Morphological, Nutrients	HYMO, Ag	Ballinabranna GWS	NFGWS, Restoration	View WB Page	View WB on EPA Water Map
14	IE_SE_14B012700	BARROW_180	River	Carlow County Council	SAC; NSA;	Moderate	Moderate	Moderate	Good	2022-2027	At risk	Nutrients, Organic	UR, Ag			View WB Page	View WB on EPA Water Map
14	IE_SE_14B012820	BARROW_190	River	Carlow County Council	SAC; NSA;	Unassigned	Unassigned	Moderate	Good	2022-2027	Review					View WB Page	View WB on EPA Water Map
14	IE_SE_14B012920	BARROW_200	River	Carlow County Council	SAC; NSA;	Good	Good	Moderate	Good	2022-2027	At risk	Nutrients, Organic	UR, Ag, UWW			View WB Page	View WB on EPA Water Map
14	IE_SE_14B013100	BARROW_210	River	Carlow County Council	SAC; NSA;	Poor	Poor	Poor	Good	2022-2027	At risk	Nutrients, Organic, UnknownImpactType	UR, HYMO, Ind			View WB Page	View WB on EPA Water Map
14	IE_SE_14B013300	BARROW_220	River	Carlow County Council	SAC; NSA;	Moderate	Moderate	Moderate	Good	2022-2027	At risk	Nutrients	Ag			View WB Page	View WB on EPA Water Map
14	IE_SE_14B013514	BARROW_230	River	Kilkenny County Council	SAC; NSA;	Poor	Poor	Poor	Good	2022-2027	At risk	Morphological, Chemical, Nutrients	Unknown, HYMO	Mountain-Borris	LAWPRO, Restoration	View WB Page	View WB on EPA Water Map
14	IE_SE_14B013600	BARROW_240	River	Kilkenny County Council	SAC; NSA;	Unassigned	Moderate	Moderate	Good	2022-2027	Review					View WB Page	View WB on EPA Water Map
14	IE_SE_14B031000	BLACKWATER (LAOIS)_010	River	Laois County Council	SAC;	Moderate	Moderate	Good	Good	2021 or earlier	Not at risk			Upper Barrow (Headwaters to Mountmellick)	LAWPRO, Restoration	View WB Page	View WB on EPA Water Map
14	IE_SE_14B040100	BOTHOGUE_010	River	Wicklow County Council		Good	Good	Good	Good	2021 or earlier	Not at risk			Greese	LAWPRO, Restoration	View WB Page	View WB on EPA Water Map
14	IE_SE_14B040300	BOTHOGUE_020	River	Wicklow County Council		Good	Good	Good	Good	2021 or earlier	Not at risk			Greese	LAWPRO, Restoration	View WB Page	View WB on EPA Water Map
14	IE_SE_14B050020	BURREN_010	River	Carlow County Council	SAC;	Good	Good	Good	High	2022-2027	At risk	Sediment, Hydrological, Morphological	Ag, For, HYMO	Burren	LAWPRO, Restoration	View WB Page	View WB on EPA Water Map
14	IE_SE_14B050110	BURREN_020	River	Carlow County Council	DWPA;	Moderate	Moderate	Moderate	Good	2022-2027	At risk	Sediment, Hydrological, Morphological, Nutrients, Organic	Ag, HYMO	Burren	LAWPRO, Restoration	View WB Page	View WB on EPA Water Map
14	IE_SE_14B050200	BURREN_030	River	Carlow County Council		Moderate	Moderate	Moderate	Good	2022-2027	At risk	Morphological, Nutrients	HYMO, Ag	Burren	LAWPRO, Restoration	View WB Page	View WB on EPA Water Map
14	IE_SE_14B050310	BURREN_040	River	Carlow County Council		Moderate	Moderate	Moderate	Good	2022-2027	At risk	Hydrological, Morphological, Nutrients	HYMO, Ag	Burren	LAWPRO, Restoration	View WB Page	View WB on EPA Water Map
14	IE_SE_14B050400	BURREN_050	River	Carlow County Council		Good	Moderate	Good	Good	2021 or earlier	Not at risk			Burren	LAWPRO, Restoration	View WB Page	View WB on EPA Water Map
14	IE_SE_14B050500	BURREN_060	River	Carlow County Council	DWPA;	Poor	Moderate	Moderate	Good	2022-2027	At risk	Hydrological, Morphological, Nutrients, Organic	HYMO, UR	Burren	LAWPRO, Restoration	View WB Page	View WB on EPA Water Map
14	IE_SE_14B060700	BLACK (BORRIS)_010	River	Carlow County Council		Good	Good	Good	Good	2021 or earlier	Not at risk			Mountain-Borris	LAWPRO, Restoration	View WB Page	View WB on EPA Water Map
14	IE_SE_14B061380	BLACK (BORRIS)_020	River	Carlow County Council		Good	Moderate	Moderate	Good	2022-2027	At risk	Nutrients, Organic	Ag, UWW	Mountain-Borris	LAWPRO, Restoration	View WB Page	View WB on EPA Water Map
14	IE_SE_14B080700	BALLYNABOLEY STREAM_010	River	Carlow County Council	SAC;	Moderate	Poor	Poor	Good	2022-2027	At risk	Nutrients, UnknownImpactType	Ag, Unknown	Ballynaboley	Carlow County Council, Restoration	View WB Page	View WB on EPA Water Map
14	IE_SE_14B100300	BURTOWN STREAM_010	River	Kildare County Council		Unassigned	Moderate	Moderate	Good	2022-2027	At risk	Hydrological, Morphological, UnknownImpactType	Ag	Greese	LAWPRO, Restoration	View WB Page	View WB on EPA Water Map
14	IE_SE_14B210500	Ballyroughan Little_010	River	Carlow County Council	SAC;	Good	Good	High	Good	2021 or earlier	Not at risk			Mountain-Borris	LAWPRO, Restoration	View WB Page	View WB on EPA Water Map
14	IE_SE_14C020600	CROOKED (STRADBALLY)_010	River	Laois County Council		Good	Good	Good	Good	2021 or earlier	Not at risk					View WB Page	View WB on EPA Water Map
14	IE_SE_14C040050	CUSHINA_010	River	Offaly County Council		Moderate	Poor	Good	Good	2021 or earlier	Review			Cushina	Offaly County Council, Restoration	View WB Page	View WB on EPA Water Map
14	IE_SE_14C040080	CUSHINA_020	River	Offaly County Council		Good	Poor	Poor	Good	2022-2027	At risk	Sediment, Morphological, Nutrients, Organic	Ag, DWTS, UWW, Peat	Cushina	Offaly County Council, Restoration	View WB Page	View WB on EPA Water Map
14	IE_SE_14C040100	CUSHINA_030	River	Offaly County Council		Good	Good	Good	Good	2021 or earlier	Not at risk					View WB Page	View WB on EPA Water Map
14	IE_SE_14C150500	COTTONERS BROOK_010	River	Laois County Council		Unassigned	Good	Moderate	Good	2022-2027	Review			Barrow (Mountmellick to Portarlinton)	LAWPRO, Restoration	View WB Page	View WB on EPA Water Map
14	IE_SE_14C170200	CLONCUMBER STREAM_010	River	Kildare County Council	SAC;	Poor	Moderate	Moderate	Good	2022-2027	At risk	Hydrological, Morphological	HYMO	Cloncumber	Kildare County Council, Restoration	View WB Page	View WB on EPA Water Map
14	IE_SE_14C170250	CLONCUMBER STREAM_020	River	Kildare County Council		Unassigned	Poor	Moderate	Good	2022-2027	At risk	Hydrological, Morphological	HYMO	Cloncumber	Kildare County Council, Restoration	View WB Page	View WB on EPA Water Map
14	IE_SE_14C510940	CLONYGOWAN_010	River	Offaly County Council	SAC;	Unassigned	Unassigned	Moderate	Good	2022-2027	Review			Barrow (Mountmellick to Portarlinton)	LAWPRO, Restoration	View WB Page	View WB on EPA Water Map
14	IE_SE_14D030040	DOUGLAS (LAOIS)_010	River	Laois County Council		High	High	High	High	2021 or earlier	Not at risk					View WB Page	View WB on EPA Water Map
14	IE_SE_14D030100	DOUGLAS (LAOIS)_020	River	Laois County Council		Good	Good	Good	Good	2021 or earlier	Review					View WB Page	View WB on EPA Water Map
14	IE_SE_14D030300	DOUGLAS (LAOIS)_030	River	Laois County Council	SAC;	Good	Moderate	Moderate	Good	2022-2027	At risk	Nutrients, Organic	Ag, UWW			View WB Page	View WB on EPA Water Map
14	IE_SE_14D040100	DUISKE_010	River	Kilkenny County Council	SAC;	Good	Good	High	Good	2021 or earlier	Not at risk					View WB Page	View WB on EPA Water Map

14	IE_SE_14D040200	DUISKE_020	River	Kilkenny County Council	DWPA; SAC;	Moderate	Moderate	Moderate	Good	2022-2027	At risk	Morphological, MicrobiologicalPollution, Nutrients, Organic	UR, HYMO, Ag	Powerstown - Duiske	LAWPRO, Restoration	View WB Page	View WB on EPA Water Map
14	IE_SE_14D050200	DUNRALLY STREAM_010	River	Laois County Council		Good	Good	Good	Good	2021 or earlier	Not at risk			The Heath GWS	NFGWS, Protection	View WB Page	View WB on EPA Water Map
14	IE_SE_14D050400	DUNRALLY STREAM_020	River	Laois County Council		Good	Good	Good	Good	2021 or earlier	Not at risk					View WB Page	View WB on EPA Water Map
14	IE_SE_14D060100	DAINGEAN_010	River	Offaly County Council		Poor	Poor	Poor	Good	2022-2027	At risk	Morphological, Nutrients	Peat	Daingean	LAWPRO, Restoration	View WB Page	View WB on EPA Water Map
14	IE_SE_14D060200	DAINGEAN_020	River	Offaly County Council		Poor	Poor	Poor	Good	2022-2027	At risk	Sediment, Morphological, Nutrients, Organic	UWW, Ag, Peat	Daingean	LAWPRO, Restoration	View WB Page	View WB on EPA Water Map
14	IE_SE_14D060400	DAINGEAN_030	River	Offaly County Council		Poor	Poor	Poor	Good	2022-2027	At risk	Morphological, Nutrients	Peat	Daingean	LAWPRO, Restoration	View WB Page	View WB on EPA Water Map
14	IE_SE_14D070500	DRUMMOND STREAM_010	River	Laois County Council		Unassigned	Good	Good	Good	2021 or earlier	Review			Upper Barrow (Headwaters to Mountmellick)	LAWPRO, Restoration	View WB Page	View WB on EPA Water Map
14	IE_SE_14E010100	ESKER STREAM_010	River	Offaly County Council		Unassigned	Good	Moderate	Good	2022-2027	Review			Figile	LAWPRO, Restoration	View WB Page	View WB on EPA Water Map
14	IE_SE_14E010200	ESKER STREAM_020	River	Offaly County Council		Moderate	Good	Moderate	Good	2022-2027	At risk	Morphological, Nutrients	Peat	Figile	LAWPRO, Restoration	View WB Page	View WB on EPA Water Map
14	IE_SE_14E020300	ENAGHAN STREAM_010	River	Offaly County Council		Good	High	Good	Good	2021 or earlier	Not at risk					View WB Page	View WB on EPA Water Map
14	IE_SE_14F010061	FIGILE_010	River	Kildare County Council		Poor	Poor	Poor	Good	2022-2027	At risk	Sediment, Hydrological, Morphological, Nutrients, Organic	HYMO, Ind, UWW, Peat	Figile	LAWPRO, Restoration	View WB Page	View WB on EPA Water Map
14	IE_SE_14F010100	FIGILE_020	River	Kildare County Council		Moderate	Moderate	Moderate	Good	2022-2027	At risk	Hydrological, Morphological	Peat	Figile	LAWPRO, Restoration	View WB Page	View WB on EPA Water Map
14	IE_SE_14F010200	FIGILE_030	River	Offaly County Council	SAC;	Moderate	Moderate	Moderate	Good	2022-2027	At risk	Sediment, Hydrological, Organic	Peat	Figile	LAWPRO, Restoration	View WB Page	View WB on EPA Water Map
14	IE_SE_14F010300	FIGILE_040	River	Offaly County Council		Moderate	Moderate	Moderate	Good	2022-2027	At risk	Morphological, Nutrients, Organic	Peat	Figile	LAWPRO, Restoration	View WB Page	View WB on EPA Water Map
14	IE_SE_14F010400	FIGILE_050	River	Offaly County Council		Good	Good	Poor	Good	2022-2027	At risk	Sediment, Nutrients, Organic	Ag, Peat			View WB Page	View WB on EPA Water Map
14	IE_SE_14F010500	FIGILE_060	River	Offaly County Council		Good	Good	Good	Good	2021 or earlier	Not at risk					View WB Page	View WB on EPA Water Map
14	IE_SE_14F010510	FIGILE_070	River	Offaly County Council		Unassigned	Unassigned	Good	Good	2021 or earlier	Review					View WB Page	View WB on EPA Water Map
14	IE_SE_14F010600	FIGILE_080	River	Kildare County Council	SAC;	Unassigned	Moderate	Good	Good	2021 or earlier	Review					View WB Page	View WB on EPA Water Map
14	IE_SE_14F030050	FUSHOGE_010	River	Laois County Council	SAC;	Good	Good	Good	Good	2021 or earlier	Not at risk			Fushoge	Laois County Council, Protection	View WB Page	View WB on EPA Water Map
14	IE_SE_14F030250	FUSHOGE_020	River	Laois County Council	SAC;	Good	Good	Good	Good	2021 or earlier	Review			Fushoge	Laois County Council, Protection	View WB Page	View WB on EPA Water Map
14	IE_SE_14G020300	GLENLAHAN_010	River	Laois County Council	SAC;	Good	Good	Good	Good	2021 or earlier	Not at risk			Upper Barrow (Headwaters to Mountmellick)	LAWPRO, Restoration	View WB Page	View WB on EPA Water Map
14	IE_SE_14G030100	GOWRAN_010	River	Kilkenny County Council		Moderate	Moderate	Moderate	Good	2022-2027	At risk	Nutrients	Ag	Gowran-Monefelim	LAWPRO, Restoration	View WB Page	View WB on EPA Water Map
14	IE_SE_14G030220	GOWRAN_020	River	Kilkenny County Council		Moderate	Moderate	Good	Good	2021 or earlier	Review			Gowran-Monefelim	LAWPRO, Restoration	View WB Page	View WB on EPA Water Map
14	IE_SE_14G040070	GREESE_010	River	Wicklow County Council		Poor	Poor	Poor	Good	2022-2027	At risk	Nutrients, Organic	Ag, DWTS	Greese	LAWPRO, Restoration	View WB Page	View WB on EPA Water Map
14	IE_SE_14G040100	GREESE_020	River	Wicklow County Council		Good	Moderate	Moderate	Good	2022-2027	At risk	Sediment, Nutrients	Ag	Greese	LAWPRO, Restoration	View WB Page	View WB on EPA Water Map
14	IE_SE_14G040200	GREESE_030	River	Kildare County Council		Moderate	Poor	Poor	Good	2022-2027	At risk	Sediment, Hydrological, Nutrients, Organic	Ind, Ag, DWTS, HYMO, UWW	Greese	LAWPRO, Restoration	View WB Page	View WB on EPA Water Map
14	IE_SE_14G040350	GREESE_040	River	Kildare County Council		Moderate	Moderate	Moderate	Good	2022-2027	At risk	Sediment, Morphological, Nutrients	HYMO, Ag, DWTS	Greese	LAWPRO, Restoration	View WB Page	View WB on EPA Water Map
14	IE_SE_14G040400	GREESE_050	River	Kildare County Council		Moderate	Moderate	Moderate	Good	2022-2027	At risk	Morphological, UnknownImpactType	Ag	Greese	LAWPRO, Restoration	View WB Page	View WB on EPA Water Map
14	IE_SE_14G040600	GREESE_060	River	Kildare County Council	SAC;	Good	Moderate	Moderate	Good	2022-2027	At risk	Nutrients, Organic	UWW, Ag	Greese	LAWPRO, Restoration	View WB Page	View WB on EPA Water Map
14	IE_SE_14G060100	GRANGECON STREAM_010	River	Wicklow County Council		Good	Good	Good	Good	2021 or earlier	Review			Greese	LAWPRO, Restoration	View WB Page	View WB on EPA Water Map
14	IE_SE_14G070200	GRANEY (LERR)_010	River	Kildare County Council		Good	Moderate	Moderate	Good	2022-2027	At risk	Sediment, Morphological, Nutrients	Ag, HYMO, M+Q	Graney-Lerr	LAWPRO, Restoration	View WB Page	View WB on EPA Water Map
14	IE_SE_14G070310	GRANEY (LERR)_020	River	Kildare County Council		Moderate	Poor	Poor	Good	2022-2027	At risk	Sediment, Morphological, Nutrients	HYMO, Ag	Graney-Lerr	LAWPRO, Restoration	View WB Page	View WB on EPA Water Map
14	IE_SE_14G110800	GUILIE_010	River	Laois County Council	SAC;	Unassigned	Moderate	Poor	Good	2022-2027	Review					View WB Page	View WB on EPA Water Map
14	IE_SE_14H090690	HERMITAGE_010	River	Wexford County Council	SAC; NSA;	Unassigned	Unassigned	Good	Good	2021 or earlier	Review					View WB Page	View WB on EPA Water Map
14	IE_SE_14H110730	Hill Camlin_010	River	Wexford County Council	SAC;	Unassigned	Poor	Moderate	Good	2022-2027	Review					View WB Page	View WB on EPA Water Map
14	IE_SE_14H170950	Hillfort Ballinkillin_010	River	Carlow County Council		Unassigned	Unassigned	Good	Good	2021 or earlier	Review			Ballyellen GWS	NFGWS, Protection	View WB Page	View WB on EPA Water Map
14	IE_SE_14K040200	KILLEEN STREAM (DOUGLAS)_010	River	Laois County Council		Unassigned	Moderate	Poor	Good	2022-2027	At risk	Nutrients, Organic	Ag, DWTS			View WB Page	View WB on EPA Water Map
14	IE_SE_14K060600	KYLEGROVE STREAM_010	River	Laois County Council		Unassigned	Unassigned	Poor	Good	2022-2027	Review					View WB Page	View WB on EPA Water Map
14	IE_SE_14K220850	KILKEERAN_010	River	Offaly County Council	SAC;	Unassigned	Unassigned	Moderate	Good	2022-2027	Review			Barrow (Mountmellick to Portarlinton)	LAWPRO, Restoration	View WB Page	View WB on EPA Water Map

14	IE_SE_14K240670	KILNANTOGE_LOWER_010	River	Kildare County Council		Unassigned	Moderate	Moderate	Good	2022-2027	Review					View WB Page	View WB on EPA Water Map
14	IE_SE_14K270950	KILDOON_010	River	Kildare County Council	SAC;	Unassigned	Moderate	Moderate	Good	2022-2027	Review			Tully Stream	Kildare County Council, Restoration	View WB Page	View WB on EPA Water Map
14	IE_SE_14L010080	LERR_010	River	Kildare County Council	SAC;	Moderate	Moderate	Moderate	Good	2022-2027	At risk	Morphological, Nutrients	Ag	Graney-Lerr	LAWPRO, Restoration	View WB Page	View WB on EPA Water Map
14	IE_SE_14L010155	LERR_020	River	Kildare County Council	SAC;	Poor	Moderate	Poor	Good	2022-2027	At risk	Sediment, Morphological, Nutrients	UR, Ag, HYMO	Graney-Lerr	LAWPRO, Restoration	View WB Page	View WB on EPA Water Map
14	IE_SE_14L010250	LERR_030	River	Kildare County Council	SAC;	Moderate	Moderate	Poor	Good	2022-2027	At risk	Morphological	Ag, HYMO	Graney-Lerr	LAWPRO, Restoration	View WB Page	View WB on EPA Water Map
14	IE_SE_14L010300	LERR_040	River	Kildare County Council	SAC;	Moderate	Moderate	Poor	Good	2022-2027	At risk	Hydrological, Morphological	HYMO, Ag	Graney-Lerr	LAWPRO, Restoration	View WB Page	View WB on EPA Water Map
14	IE_SE_14M010020	MOUNTAIN (CARLOW)_010	River	Carlow County Council	SAC;	Moderate	Good	Good	Good	2021 or earlier	Not at risk			Mountain-Borris	LAWPRO, Restoration	View WB Page	View WB on EPA Water Map
14	IE_SE_14M010070	MOUNTAIN (CARLOW)_020	River	Carlow County Council	SAC;	Good	Good	Good	Good	2021 or earlier	Not at risk			Mountain-Borris	LAWPRO, Restoration	View WB Page	View WB on EPA Water Map
14	IE_SE_14M010160	MOUNTAIN (CARLOW)_030	River	Carlow County Council	DWPA; SAC;	Unassigned	Good	Good	Good	2021 or earlier	Review			Mountain-Borris	LAWPRO, Restoration	View WB Page	View WB on EPA Water Map
14	IE_SE_14M030100	MONFELIM_010	River	Kilkenny County Council		Good	Good	High	Good	2021 or earlier	Not at risk			Gowran-Monefelim	LAWPRO, Restoration	View WB Page	View WB on EPA Water Map
14	IE_SE_14M030600	MONFELIM_020	River	Kilkenny County Council		Moderate	Good	Good	Good	2021 or earlier	Review			Gowran-Monefelim	LAWPRO, Restoration	View WB Page	View WB on EPA Water Map
14	IE_SE_14M031000	MONFELIM_030	River	Kilkenny County Council	SAC;	Moderate	Moderate	Moderate	Good	2022-2027	At risk	Sediment, Nutrients, Organic	DWTS, Ag	Gowran-Monefelim	LAWPRO, Restoration	View WB Page	View WB on EPA Water Map
14	IE_SE_14M240860	MOANMORE_010	River	Kilkenny County Council	SAC;	Unassigned	Moderate	Good	Good	2021 or earlier	Review			Gowran-Monefelim	LAWPRO, Restoration	View WB Page	View WB on EPA Water Map
14	IE_SE_14O010050	OWENASS_010	River	Laois County Council	SAC;	Good	Good	Good	Good	2021 or earlier	Not at risk			Upper Barrow (Headwaters to Mountmellick)	LAWPRO, Restoration	View WB Page	View WB on EPA Water Map
14	IE_SE_14O010300	OWENASS_020	River	Laois County Council	SAC;	Moderate	Moderate	Moderate	Good	2022-2027	At risk	Nutrients, Organic	Ag, UWW	Upper Barrow (Headwaters to Mountmellick)	LAWPRO, Restoration	View WB Page	View WB on EPA Water Map
14	IE_SE_14O020500	OLD LEIGHLIN STREAM_010	River	Carlow County Council	SAC;	Good	Good	Good	Good	2021 or earlier	Not at risk					View WB Page	View WB on EPA Water Map
14	IE_SE_14O020700	OLD LEIGHLIN STREAM_020	River	Carlow County Council	SAC;	Moderate	Moderate	Moderate	Good	2022-2027	At risk	Nutrients	Ag	Old Leighlin stream	Carlow County Council, Restoration	View WB Page	View WB on EPA Water Map
14	IE_SE_14P020400	POWERSTOWN_010	River	Kilkenny County Council	SAC;	Moderate	Poor	Moderate	Good	2022-2027	At risk	Sediment, Morphological, Nutrients	HYMO, For, Ag, M+Q	Powerstown - Duiske	LAWPRO, Restoration	View WB Page	View WB on EPA Water Map
14	IE_SE_14P030300	POLLMOUNTY_010	River	Wexford County Council	DWPA; SAC;	Moderate	Moderate	Moderate	Good	2022-2027	At risk	Morphological, UnknownImpactType	For, Aq			View WB Page	View WB on EPA Water Map
14	IE_SE_14P040200	PALATINE STREAM_010	River	Carlow County Council		Moderate	Moderate	Moderate	Good	2022-2027	At risk	Morphological, Nutrients	HYMO, Ag	Graney-Lerr	LAWPRO, Restoration	View WB Page	View WB on EPA Water Map
14	IE_SE_14P200000	PIGEONHOUSE_010	River	Laois County Council		Unassigned	Poor	Good	Good	2021 or earlier	Review			Upper Barrow (Headwaters to Mountmellick)	LAWPRO, Restoration	View WB Page	View WB on EPA Water Map
14	IE_SE_14R170990	RATHANGAN_DEMESNE_010	River	Kildare County Council		Unassigned	Unassigned	Moderate	Good	2022-2027	Review			Slate	Kildare County Council, Restoration	View WB Page	View WB on EPA Water Map
14	IE_SE_14R330970	ROSCAT_010	River	Carlow County Council		Unassigned	Moderate	Moderate	Good	2022-2027	Review			Burren	LAWPRO, Restoration	View WB Page	View WB on EPA Water Map
14	IE_SE_14R430830	RATHORNAN_010	River	Carlow County Council	SAC;	Unassigned	Moderate	Good	Good	2021 or earlier	Review					View WB Page	View WB on EPA Water Map
14	IE_SE_14S010000	SLATE_010	River	Kildare County Council	SAC;	Unassigned	Moderate	Poor	Good	2022-2027	At risk	Morphological, Nutrients, Organic, UnknownImpactType	UR, HYMO, Peat	Upper Slate	LAWPRO, Restoration	View WB Page	View WB on EPA Water Map
14	IE_SE_14S010020	SLATE_020	River	Kildare County Council	SAC;	Poor	Poor	Poor	Good	2022-2027	At risk	Nutrients, Organic	UWW, Ag	Upper Slate	LAWPRO, Restoration	View WB Page	View WB on EPA Water Map
14	IE_SE_14S010036	SLATE_030	River	Kildare County Council		Unassigned	Poor	Poor	Good	2022-2027	At risk	Nutrients, UnknownImpactType	For, Ag	Upper Slate	LAWPRO, Restoration	View WB Page	View WB on EPA Water Map
14	IE_SE_14S010050	SLATE_040	River	Kildare County Council		Poor	Poor	Poor	Good	2022-2027	At risk	Hydrological, Morphological, Nutrients, Organic	Peat	Upper Slate	LAWPRO, Restoration	View WB Page	View WB on EPA Water Map
14	IE_SE_14S010100	SLATE_050	River	Kildare County Council		Moderate	Moderate	Moderate	Good	2022-2027	At risk	Hydrological, Morphological, Organic	HYMO, Peat	Slate	Kildare County Council, Restoration	View WB Page	View WB on EPA Water Map
14	IE_SE_14S010210	SLATE_060	River	Kildare County Council		Moderate	Moderate	Moderate	Good	2022-2027	At risk	Nutrients, Organic	UR	Slate	Kildare County Council, Restoration	View WB Page	View WB on EPA Water Map
14	IE_SE_14S010300	SLATE_070	River	Offaly County Council		Good	Moderate	Moderate	Good	2022-2027	At risk	Sediment, Morphological, Nutrients, Organic	Ag, HYMO, UWW, Peat	Slate	Kildare County Council, Restoration	View WB Page	View WB on EPA Water Map
14	IE_SE_14S020030	STRADBALLY (LAOIS)_010	River	Laois County Council		Moderate	Good	Good	Good	2021 or earlier	Not at risk					View WB Page	View WB on EPA Water Map
14	IE_SE_14S020100	STRADBALLY (LAOIS)_020	River	Laois County Council		Good	Good	Good	Good	2021 or earlier	Not at risk					View WB Page	View WB on EPA Water Map
14	IE_SE_14S020350	STRADBALLY (LAOIS)_030	River	Laois County Council	SAC;	Moderate	Moderate	Good	Good	2021 or earlier	Review					View WB Page	View WB on EPA Water Map
14	IE_SE_14S020400	STRADBALLY (LAOIS)_040	River	Laois County Council	SAC;	Good	Moderate	Moderate	Good	2022-2027	At risk	Nutrients	Ag			View WB Page	View WB on EPA Water Map
14	IE_SE_14T010100	TRIOGUE_010	River	Laois County Council		Good	Good	Moderate	Good	2022-2027	At risk	Sediment, Nutrients	Ag			View WB Page	View WB on EPA Water Map
14	IE_SE_14T010200	TRIOGUE_020	River	Laois County Council	NSA;	Poor	Poor	Poor	Good	2022-2027	At risk	Nutrients, Organic	UR, UWW			View WB Page	View WB on EPA Water Map
14	IE_SE_14T010300	TRIOGUE_030	River	Laois County Council	NSA;	Poor	Poor	Poor	Good	2022-2027	At risk	Nutrients, Organic	UR, Unknown, Ag			View WB Page	View WB on EPA Water Map
14	IE_SE_14T010400	TRIOGUE_040	River	Laois County Council	NSA;	Moderate	Poor	Poor	Good	2022-2027	At risk	Nutrients	Ag			View WB Page	View WB on EPA Water Map

14	IE_SE_14T020200	TULLY STREAM_010	River	Kildare County Council		Poor	Poor	Poor	Good	2022-2027	At risk	Nutrients, Organic, UnknownImpactType	Unknown, Ind	Tully Stream	Kildare County Council, Restoration	View WB Page	View WB on EPA Water Map
14	IE_SE_14T020409	TULLY STREAM_020	River	Kildare County Council		Poor	Poor	Poor	Good	2022-2027	At risk	Nutrients, Organic	Ind, Ag	Tully Stream	Kildare County Council, Restoration	View WB Page	View WB on EPA Water Map
14	IE_SE_14T020500	TULLY STREAM_030	River	Kildare County Council		Good	Moderate	Moderate	Good	2022-2027	At risk	Nutrients	Ag	Tully Stream	Kildare County Council, Restoration	View WB Page	View WB on EPA Water Map
14	IE_SE_14T020600	TULLY STREAM_040	River	Kildare County Council	SAC;	Good	Moderate	Moderate	Good	2022-2027	At risk	Nutrients	Ag	Tully Stream	Kildare County Council, Restoration	View WB Page	View WB on EPA Water Map
14	IE_SE_14T450060	TRIB TRIOGUE CUSH BRIDGE_010	River	Laois County Council		Moderate	Moderate	Moderate	Good	2022-2027	At risk	Nutrients	Ag, For			View WB Page	View WB on EPA Water Map
14	IE_SE_14U080790	Upper Carranroe_010	River	Kilkenny County Council	SAC; NSA;	Unassigned	Good	Good	Good	2021 or earlier	Not at risk					View WB Page	View WB on EPA Water Map
13, 14, 16, 17	IE_SE_100_0100	Barrow Suir Nore Estuary	Transitional	Wexford County Council	BW; SAC; SF;	Good	Moderate	Moderate	Good	2022-2027	At risk	Nutrients	Ag	Waterford Harbour	LAWPRO, Restoration	View WB Page	View WB on EPA Water Map
14, 15	IE_SE_100_0200	New Ross Port	Transitional	Wexford County Council	SAC; SF; NSA;	Moderate	Moderate	Moderate	Good	2022-2027	At risk	Nutrients, Organic	Ag			View WB Page	View WB on EPA Water Map
14, 15	IE_SE_100_0250	Barrow Nore Estuary Upper	Transitional	Wexford County Council	SAC; NSA;	Good	Moderate	Moderate	Good	2022-2027	At risk	Nutrients	UR, Ag			View WB Page	View WB on EPA Water Map
14, 15	IE_SE_100_0300	Upper Barrow Estuary	Transitional	Kilkenny County Council	SAC; NSA;	Good	Good	Moderate	Good	2022-2027	At risk	Nutrients	Ag			View WB Page	View WB on EPA Water Map
14, 15	IE_SE_100_0400	Nore Estuary	Transitional	Kilkenny County Council	SAC; SPA; NSA;	Moderate	Good	Moderate	Good	2022-2027	At risk	Nutrients, Organic	Ag			View WB Page	View WB on EPA Water Map
14, 15, 16	IE_SE_100_0500	Lower Suir Estuary (Little Island - Cheekpoint)	Transitional	Waterford City & County Council	SAC; SF; NSA;	Moderate	Good	Moderate	Good	2022-2027	At risk	Nutrients, Organic	Ag			View WB Page	View WB on EPA Water Map