



**Cycle 3**

**HA 12 Slaney & Wexford Harbour Catchment  
Report, May 2024**

Introduction

Water Quality  
Summary

High Status  
Objectives

Water Quality  
Changes

WFD Risk

Significant  
Pressures

Action

Summary  
Information

# Introduction

This report provides an overview of the water quality in the Slaney & Wexford Harbour Catchment and the pressures impacting on water quality. This report is based on data up to 2021. The latest water quality data, dashboards and maps throughout this report are available on [catchments.ie](https://catchments.ie) and [EPA Water Map](https://epa.maps.ie).

The Slaney & Wexford Harbour catchment includes the area drained by the River Slaney and all streams entering tidal water between the Raven Point and Greenore Point, Co. Wexford, draining a total area of 1,981km<sup>2</sup>. The largest urban centre in the catchment is Wexford Town. The other main urban centres in this catchment are Wexford Town, Enniscorthy, Baltinglass, Tullow Rosslare and Kilrane.

The Slaney & Wexford Harbour Catchment is divided into 16 subcatchments and has 119 surface water bodies and 20 groundwater bodies.

[View the Slaney & Wexford Harbour Catchment on the EPA Water Map](#)

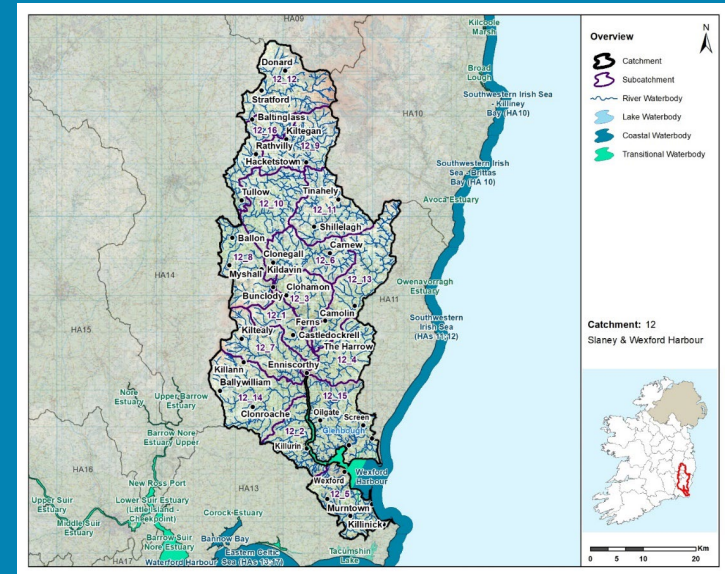
## Previous Catchment Assessments

Previous catchment assessments, which provide additional historic context and information, are archived on [catchments.ie](https://catchments.ie):

- [Cycle 2 Catchment Assessments – published September 2018](#)
- [Cycle 3 Draft Catchment Assessments – published September 2021](#)

## Online Dashboards

Links to online dashboards are provided in this report – these numbers may vary from those in this document as time progress and the online dashboards are updated based on the latest data and scientific assessments.



*Overview of Subcatchments in the Slaney & Wexford Harbour Catchment*

# Water Quality Summary

Introduction

Water Quality Summary

High Status Objectives

Water Quality Changes

WFD Risk

Significant Pressures

Action

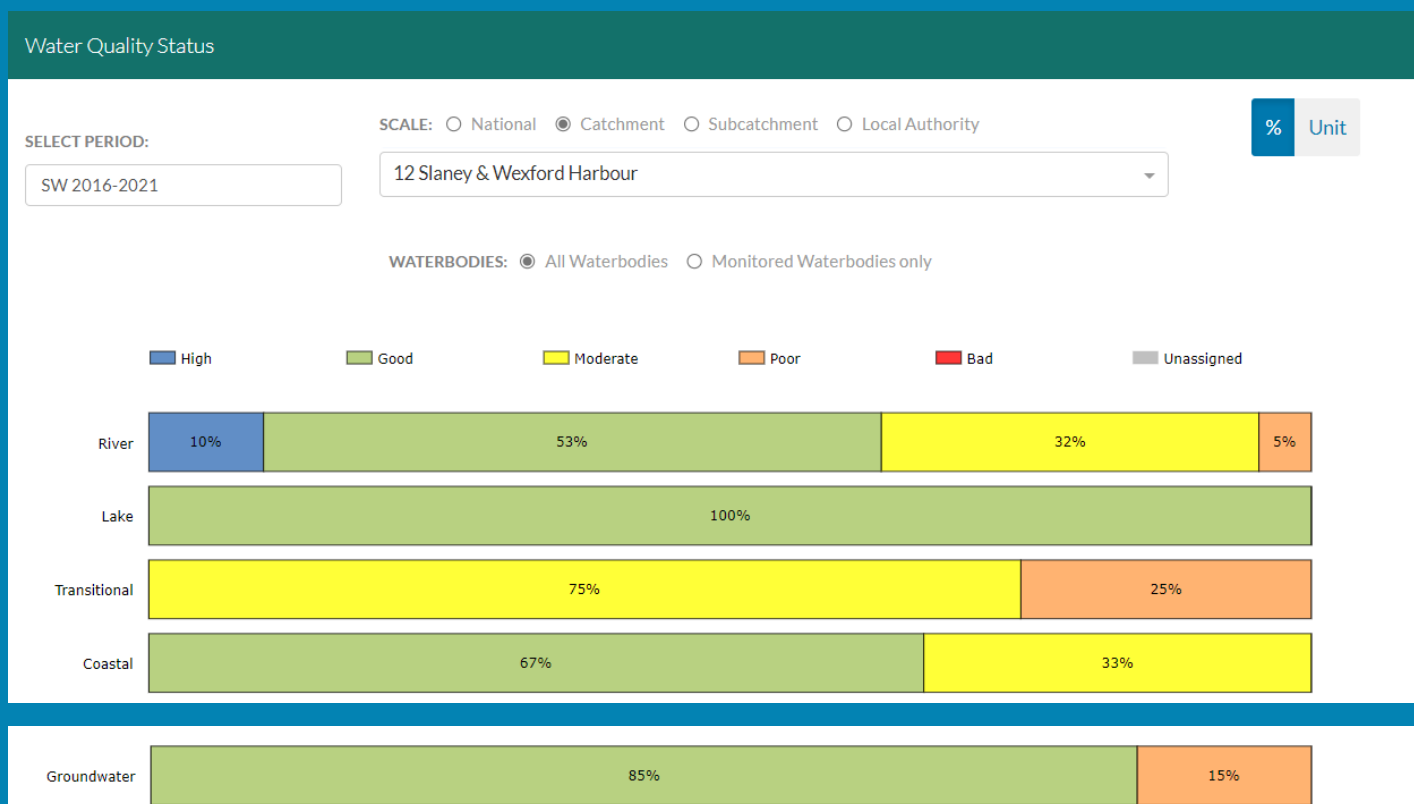
Summary Information

The dashboard below provides a breakdown of water quality status for surface and groundwater bodies in the Slaney & Wexford Harbour Catchment.

A total of 61% of surface waterbodies were at Good or High Ecological Status in the 2016-2021 monitoring period. 85% of groundwater bodies were at Good status.

**Go to EPA Water Maps for WFD Status**

[EPA Water Map](#)



Water quality status 2016-2021 for the Slaney & Wexford Harbour Catchment.  
View Online Dashboard: <https://www.catchments.ie/data/#/dashboard/waterquality>

# High Status Objective Waterbodies

Introduction

High status waters are prioritised for protection and action.

Water Quality Summary

There are 13 waterbodies with a **High Ecological Status Objective (HSO)** in the Slaney & Wexford Harbour Catchment, with six currently not meeting their environmental objective of High.

High Status Objectives

Grants for septic tank upgrades may be available in high status objective catchment areas - you can learn more and check your Eircode for eligibility here: <https://www.gov.ie/en/publication/6cc1e-domestic-waste-water-treatment-systems-septic-tanks>

[View HSO river waterbodies in this catchment.](#)

**See Status and Risk / High Status Objective for other waterbody types.**

Water Quality Changes

WFD Risk

Significant Pressures

Action

Summary Information

Water Quality Status - High Status Objective Waterbodies

SCALE:  Catchment  Local Authority

SELECT TYPE:

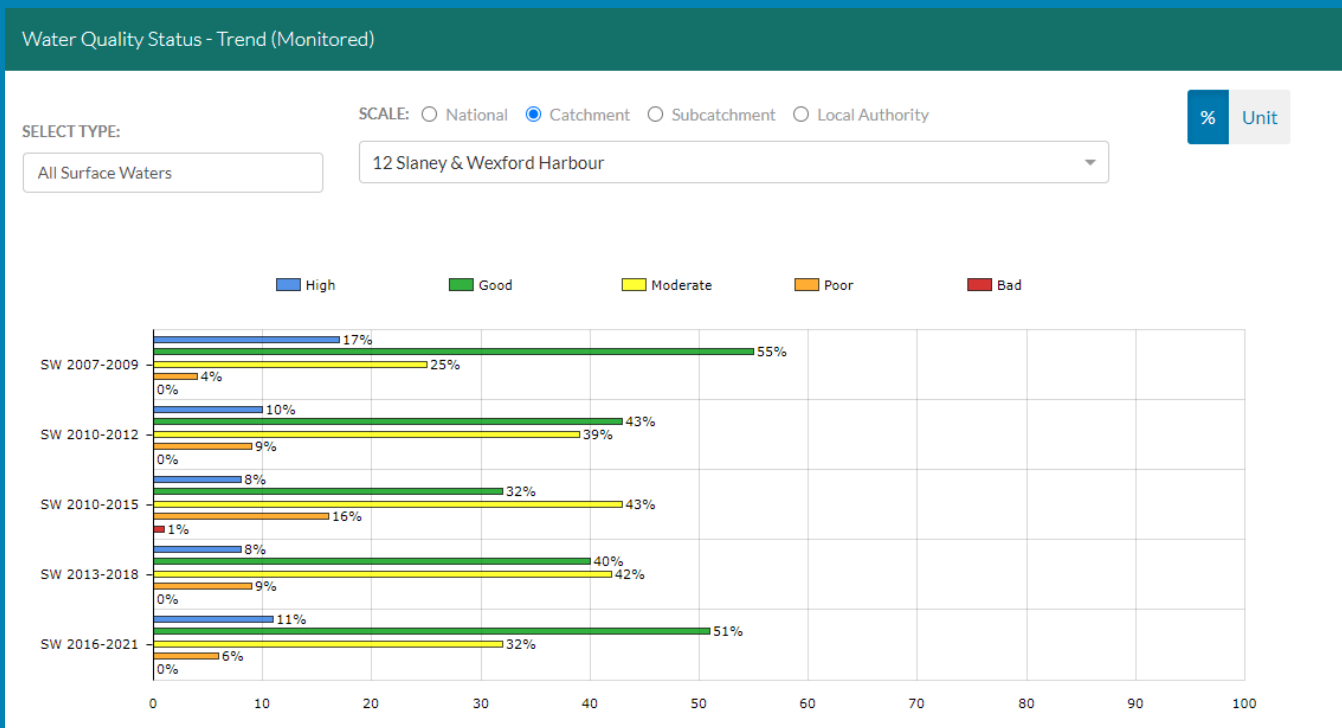
	SW 2007-2009	SW 2010-2012	SW 2010-2015	SW 2013-2018	SW 2016-2021
ASKINVILLAR STREAM_010 (River)	High	High	Good	Good	Good
BANN_010 (River)	High	High	High	Moderate	Good
BANN_020 (River)	High	High	High	Good	Good
BANN_030 (River)	Good	High	High	Good	Good
BANN_040 (River)	High	High	High	Good	Good
CLODY_010 (River)	High	High	High	High	High
COOLBOY_020 (River)	High	Good	Moderate	High	Good
DERREEN_010 (River)	High	Moderate	Good	High	High
KNICKEEN_010 (River)	High	Good	Good	High	High
SLANEY_010 (River)	High	Good	High	High	High
SLANEY_020 (River)	High	High	High	High	High
SLANEY_040 (River)	Unassigned	High	High	High	High
URRIN_010 (River)	High	Good	Good	High	High

Water quality status for High Ecological Status Objective waterbodies.

View Online Dashboard: <https://www.catchments.ie/data/#/dashboard/waterquality>

# Water Quality Changes

Below illustrates the changes in ecological status in monitored surface waterbodies over the last five monitoring cycles in the Slaney & Wexford Harbour Catchment. Nationally while there have been improvements in some waterbodies, these have been offset by declines elsewhere.



Ecological status trends for monitored surface waterbodies over the last five monitoring cycles in the Slaney & Wexford Harbour Catchment. **View online dashboard:** <https://www.catchments.ie/data/#/dashboard/waterquality>

A total of 84 (60%) waterbodies are currently meeting their environmental objective of Good or High Ecological Status.

	Total	Achieving Environmental Objectives (2016-2021)	High Status Environmental Objectives Waterbodies	Achieving High Status Environmental Objectives (2016-2021)
<b>Rivers</b>	111	64 (58%)	13	7 (54%)
<b>Lakes</b>	1	1 (100%)	-	-
<b>Transitional</b>	4	0 (0%)	-	-
<b>Coastal</b>	3	3 (67%)	-	-
<b>Groundwater</b>	20	17 (85%)	-	-

Introduction

Water Quality Summary

High Status Objectives

Water Quality Changes

WFD Risk

Significant Pressures

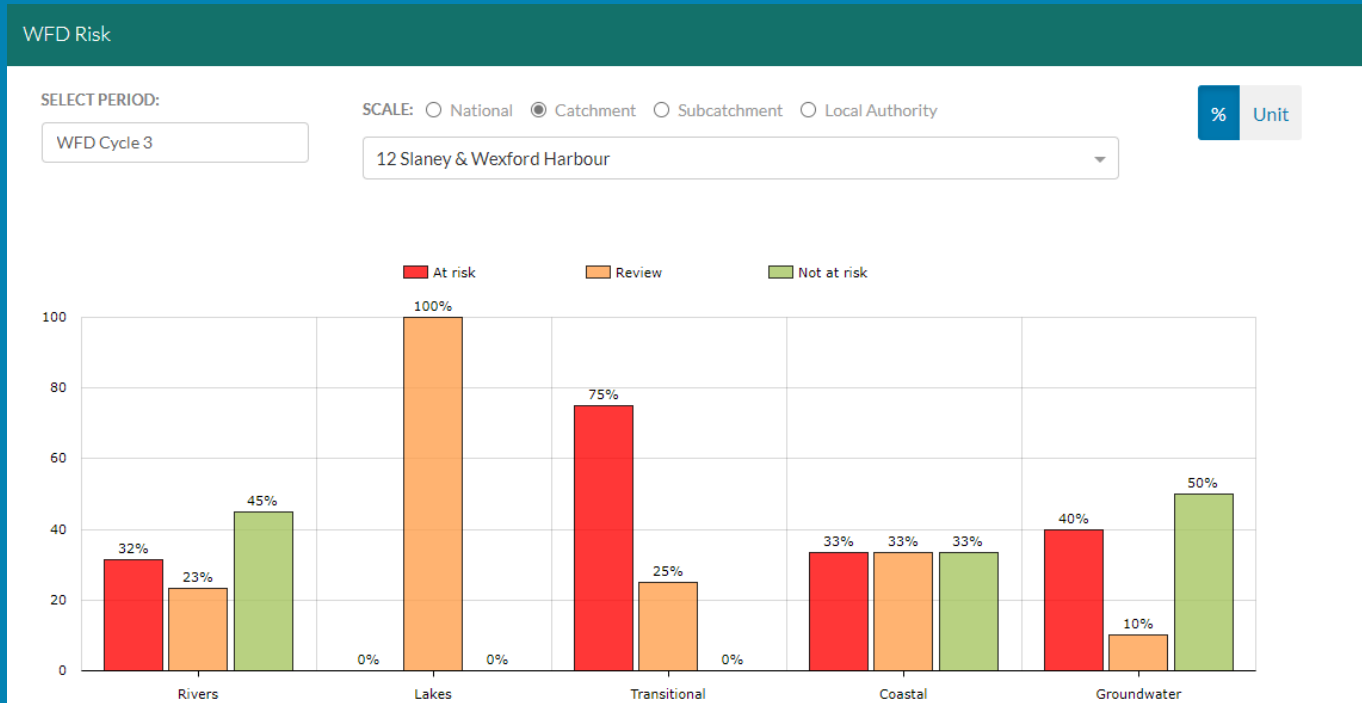
Action

Summary Information

# WFD Risk

A total of 47 (34%) waterbodies are *At Risk* of not meeting their environmental objective in the Slaney & Wexford Harbour Catchment, while 31 (22%) are under *Review* and 61 (44%) are *Not At Risk*.

Go to [EPA Water Map](#) to see *WFD Risk for this catchment*



*WFD Risk for the Slaney & Wexford Harbour Catchment based on 2016-2021 data.*  
**View Online Dashboard:** <https://www.catchments.ie/data/#/dashboard/waterquality>

There is currently one heavily modified water body (HMWB) in the Slaney & Wexford Harbour catchment, *Rosslare Harbour*. It is currently under *Review*.

There are no artificial waterbodies in the Slaney & Wexford Harbour Catchment.

The [EPA's characterisation outcome report](#) has more information on WFD Risk

Introduction

Water Quality Summary

High Status Objectives

Water Quality Changes

WFD Risk

Significant Pressures

Action

Summary Information

Introduction

Water Quality  
Summary

High Status  
Objectives

Water Quality  
Changes

WFD Risk

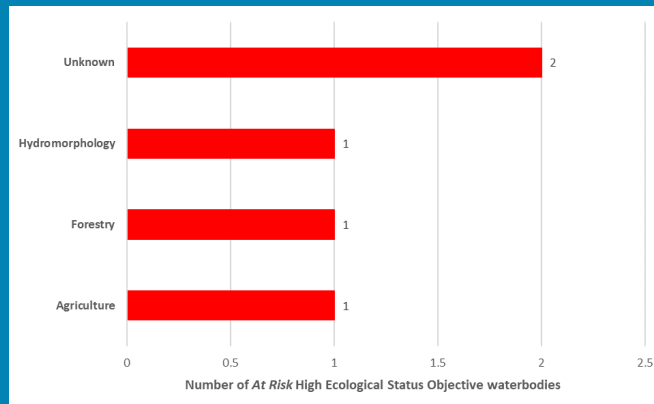
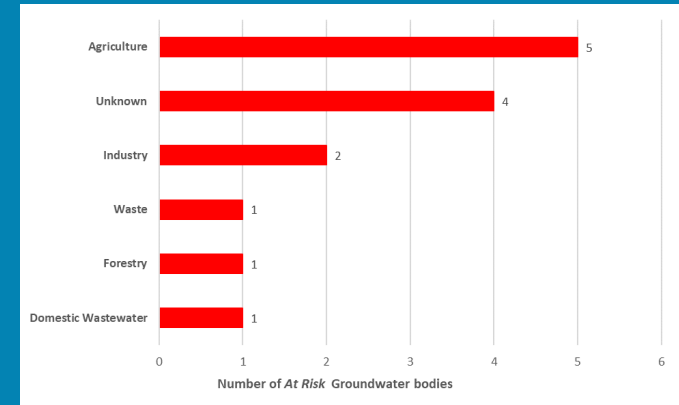
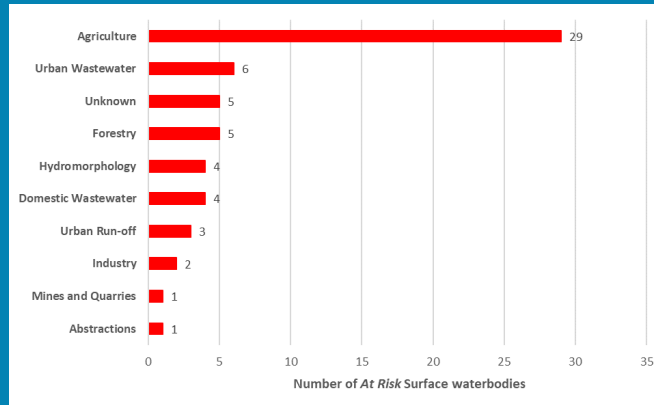
Significant  
Pressures

Action

Summary  
Information

## Significant Pressures driving risk

Significant pressure types impacting the 39 *At Risk* surface waterbodies and eight groundwater bodies are broken down in the figures below, including significant pressure information for the four *At Risk* High Ecological Status Objective waterbodies.



The issues driven by these pressures are mainly nutrient pollution, organic pollution, and altered morphological condition (habitat) impacts for surface water and chemical quality diminution for surface water, nutrient pollution and chemical pollution impacts for groundwaters. For more information, see <https://www.catchments.ie/data/#/dashboard/pressure?k=i351zs>.

*Go to the Summary Information section to get significant pressure and issue data for At Risk waterbodies within the Slaney & Wexford Harbour Catchment.*

Introduction

Water Quality  
Summary

High Status  
Objectives

Water Quality  
Changes

WFD Risk

Significant  
Pressures

Action

Summary  
Information

# Significant Pressures

Agriculture is the top significant pressure impacting 72% of the 47 *At Risk* waterbodies within the Slaney & Wexford Harbour Catchment, followed by 13% impacted by both Forestry and Urban Wastewater and 11% by Domestic Wastewater.


*The catchments.ie dashboards will show all significant pressures identified for this catchment.*

[www.catchments.ie/data/#/dashboard/pressure](http://www.catchments.ie/data/#/dashboard/pressure)


Go to the [EPA Water Maps](#) for the locations of all significant pressure types identified for this catchment


River Waterbody

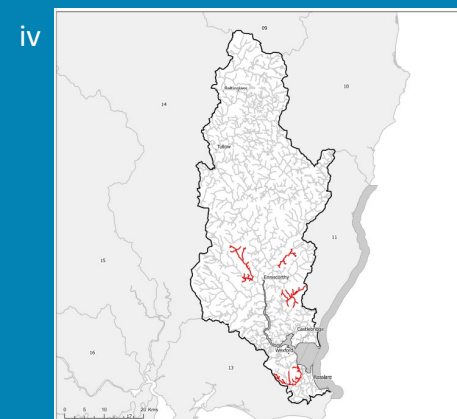
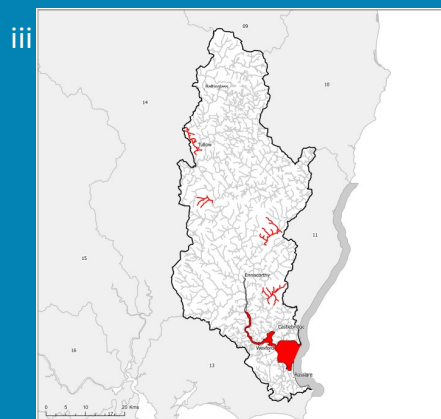
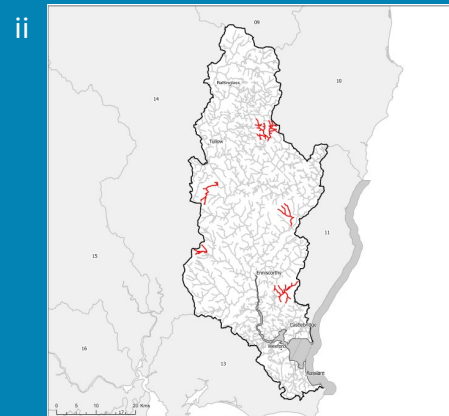
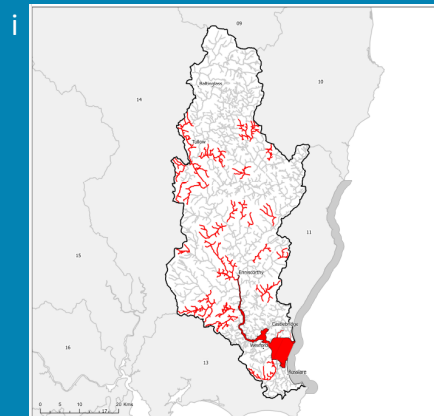
 Significant Pressure in Waterbody *At Risk*

 Other Waterbodies

Lake, Coastal and Transitional Waterbody

 Significant Pressure in Waterbody *At Risk*

 Other Waterbodies



Locations of *At Risk* surface waterbodies impacted by i) Agriculture, ii) Forestry iii) Urban Wastewater and iv) Domestic Wastewater.

Introduction

Water Quality  
Summary

High Status  
Objectives

Water Quality  
Changes

WFD Risk

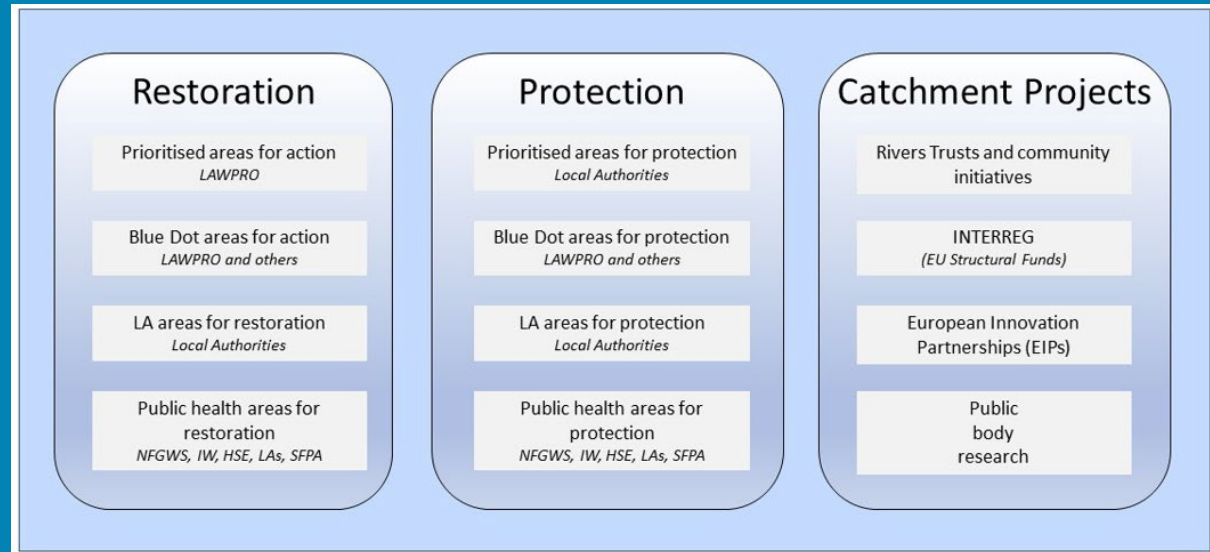
Significant  
Pressures

Action

Summary  
Information

## Priority Areas for Action

A number of waterbodies have been prioritised through the selection of Areas for Action. There were six Priority Areas for Action identified for the second river basin management planning cycle in the Slaney & Wexford Harbour Catchment. This has increased to a total of 12 Areas for Restoration, two Areas for Protection and one Catchment Project for the third cycle. ***Go to the summary information section to get Area for Action information for waterbodies within the Slaney & Wexford Harbour Catchment.***



*Types of Areas for Action under the third cycle River Basin Management Plan*

- View the current progress of Areas for Action and Summary Reports completed by LAWPRO, on catchments.ie and the EPA Water Map:
  - <https://www.catchments.ie/data/#/areaforaction>
  - [https://gis.epa.ie/EPAMaps/default?eastings=?&northing=?&lid=EPA:WFD\\_AreasForAction](https://gis.epa.ie/EPAMaps/default?eastings=?&northing=?&lid=EPA:WFD_AreasForAction)
- LAWPRO have also published detailed desktop studies on Prioritised Areas for Action (PAAs) which are available their website: <https://lawaters.ie/desktop-studies/>
- Information on Areas for Action for the second cycle is available in Cycle 2 Catchment Assessments which have been archived on catchments.ie:  
<https://www.catchments.ie/download/cycle-2-catchment-assessments-published-september-2018/>

Introduction

Water Quality  
Summary

High Status  
Objectives

Water Quality  
Changes

WFD Risk

Significant  
Pressures

Action

Summary  
Information

## Summary information for all waterbodies in the Slaney & Wexford Harbour Catchment

The next page provides a table with a breakdown of key information for all waterbodies in this catchment. The key is provided below. Additional information for each waterbody is available on <https://www.catchments.ie/data>, including a breakdown of status, a monitoring schedule for monitored waterbodies and downloadable chemistry results, where available.

<b>Protected Area categories</b>	BW: Bathing Water DW: Drinking Water Fish: Salmonid Waters NSA: Nutrient Sensitive Areas SAC: Special Area of Conservation, Natura 2000 (water dependent habitats and species) SF: Shellfish Area SPA: Special Area of Protection, Natura 2000 (water dependent habitat and species)
<b>Significant pressure* types categories</b>  <i>* For At Risk waterbodies only</i>	Ab: Abstractions Ag: Agriculture Aq: Aquaculture At: Atmospheric DWW: Domestic Wastewater For: Forestry HPS: Historically polluted sites HYMO: Hydromorphology Ind: Industry IS: Invasive Species M+Q: Mines and Quarries Peat: Peat Drainage and Extraction UR: Urban Run-Off UWW: Urban Wastewater Was: Waste WT: Water Treatment

Catchment Code	Waterbody (WB) Code	WB Name	WB Type	Local Authority	Protected Area	Status 10-15	Status 13-18	Status 16-21	Environmental Objective	Environmental Objective Date	WFD Risk 16-21	Significant Issue(s)	Significant Pressure(s)	Area for Action (AFA)	AFA (lead, type)	Link to WB page on catchments.ie	Link to WB on EPA Water Map
10, 11, 12, 13	IE_SE_010_0000	Southwestern Irish Sea (HAS 11;12)	Coastal	Wexford County Council	BW; SAC; SPA; NSA;	Good	Moderate	Good	Good	2021 or earlier	Not at risk					<a href="#">View WB Page</a>	<a href="#">View WB on EPA Water Map</a>
11, 12	IE_SE_040_0000	Wexford Harbour	Coastal	Wexford County Council	SAC; SPA; SF; NSA;	Moderate	Good	Moderate	Good	2022-2027	At risk	Nutrients, Organic	UWW, Ag	Wexford Harbour	LAWPRO, Restoration	<a href="#">View WB Page</a>	<a href="#">View WB on EPA Water Map</a>
12	IE_SE_045_0000	Rosslare Harbour	Coastal	Wexford County Council		Unassigned	High	Good	Good	2021 or earlier	Review					<a href="#">View WB Page</a>	<a href="#">View WB on EPA Water Map</a>
10, 12, 14, 9	IE_EA_G_003	Kilcullen	Groundwater	Wicklow County Council	DWPA; SAC	Good	Good	Good	Good	2021 or earlier	At risk	ChemicalQualityDiminution ForSW, Nutrients	Ag, Unknown, For			<a href="#">View WB Page</a>	<a href="#">View WB on EPA Water Map</a>
12, 14, 9	IE_EA_G_046	Gormanstown Gravels	Groundwater	Wicklow County Council	DWPA	Good	Good	Good	Good	2021 or earlier	Not at risk					<a href="#">View WB Page</a>	<a href="#">View WB on EPA Water Map</a>
10, 11, 12, 9	IE_EA_G_076	Wicklow	Groundwater	Wicklow County Council	DWPA; SAC	Good	Good	Good	Good	2021 or earlier	At risk	Nutrients	Unknown, Ag			<a href="#">View WB Page</a>	<a href="#">View WB on EPA Water Map</a>
12, 13, 14	IE_SE_G_001	Adamstown	Groundwater	Wexford County Council	DWPA; SAC	Good	Good	Good	Good	2021 or earlier	Not at risk					<a href="#">View WB Page</a>	<a href="#">View WB on EPA Water Map</a>
10, 11, 12, 13, 14, 9	IE_SE_G_011	Ballyglass	Groundwater	Wicklow County Council	DWPA; SAC	Good	Good	Good	Good	2021 or earlier	At risk	ChemicalQualityDiminution ForSW, Nutrients	Unknown, Ag			<a href="#">View WB Page</a>	<a href="#">View WB on EPA Water Map</a>
12, 13	IE_SE_G_022	Bridgetown	Groundwater	Wexford County Council	DWPA; SAC	Good	Good	Good	Good	2021 or earlier	Not at risk					<a href="#">View WB Page</a>	<a href="#">View WB on EPA Water Map</a>
11, 12	IE_SE_G_025	Cahore Point	Groundwater	Wexford County Council	DWPA; SAC	Good	Good	Good	Good	2021 or earlier	At risk	ChemicalQualityDiminution ForSW, Nutrients	DWTS, Ag			<a href="#">View WB Page</a>	<a href="#">View WB on EPA Water Map</a>
11, 12, 13	IE_SE_G_031	Castlebridge North	Groundwater	Wexford County Council	DWPA; SAC	Good	Good	Good	Good	2021 or earlier	Not at risk					<a href="#">View WB Page</a>	<a href="#">View WB on EPA Water Map</a>
12	IE_SE_G_032	Waste Facility (W0016-02)	Groundwater	Wexford County Council	DWPA; SAC	Poor	Poor	Poor	Good	2022-2027	At risk	ChemicalQualityDiminution ForSW, Nutrients	Was			<a href="#">View WB Page</a>	<a href="#">View WB on EPA Water Map</a>
11, 12	IE_SE_G_033	Castlebridge South	Groundwater	Wexford County Council	DWPA; SAC	Good	Good	Good	Good	2021 or earlier	Not at risk					<a href="#">View WB Page</a>	<a href="#">View WB on EPA Water Map</a>
11, 12, 13	IE_SE_G_061	Enniscorthy	Groundwater	Wexford County Council	DWPA; SAC	Good	Good	Good	Good	2021 or earlier	At risk	Nutrients	Ag, Unknown			<a href="#">View WB Page</a>	<a href="#">View WB on EPA Water Map</a>
12	IE_SE_G_062	Industrial Facility (P0394-01)	Groundwater	Wexford County Council	DWPA; SAC	Poor	Poor	Poor	Good	2022-2027	At risk	Chemical, ChemicalQualityDiminution ForSW	Ind			<a href="#">View WB Page</a>	<a href="#">View WB on EPA Water Map</a>
12, 13	IE_SE_G_064	Fardystown	Groundwater	Wexford County Council	DWPA; SAC	Good	Good	Good	Good	2021 or earlier	Review					<a href="#">View WB Page</a>	<a href="#">View WB on EPA Water Map</a>
12, 13	IE_SE_G_065	Fethard	Groundwater	Wexford County Council	DWPA; SAC	Good	Good	Good	Good	2021 or earlier	Not at risk					<a href="#">View WB Page</a>	<a href="#">View WB on EPA Water Map</a>
11, 12	IE_SE_G_071	Gorey	Groundwater	Wexford County Council	DWPA	Good	Good	Good	Good	2021 or earlier	Review					<a href="#">View WB Page</a>	<a href="#">View WB on EPA Water Map</a>
10, 11, 12	IE_SE_G_075	Inch	Groundwater	Wexford County Council	DWPA	Good	Good	Good	Good	2021 or earlier	Not at risk					<a href="#">View WB Page</a>	<a href="#">View WB on EPA Water Map</a>
12	IE_SE_G_151	Industrial Facility (P0062-02)	Groundwater	Wexford County Council	DWPA	Poor	Poor	Poor	Good	2022-2027	At risk	Chemical, ChemicalQualityDiminution ForSW	Ind			<a href="#">View WB Page</a>	<a href="#">View WB on EPA Water Map</a>
12, 13, 14, 15, 9	IE_SE_G_152	New Ross	Groundwater	Carlow County Council	DWPA; SAC	Good	Good	Good	Good	2021 or earlier	Not at risk					<a href="#">View WB Page</a>	<a href="#">View WB on EPA Water Map</a>
11, 12	IE_SE_G_162	Curracloe Gravels	Groundwater	Wexford County Council	DWPA; SAC	Good	Good	Good	Good	2021 or earlier	Not at risk					<a href="#">View WB Page</a>	<a href="#">View WB on EPA Water Map</a>
11, 12	IE_SE_G_164	Castlebridge Gravels	Groundwater	Wexford County Council	DWPA; SAC	Good	Good	Good	Good	2021 or earlier	Not at risk					<a href="#">View WB Page</a>	<a href="#">View WB on EPA Water Map</a>
12	IE_SE_12_11	Glenbough	Lake	Wexford County Council	SAC;	Unassigned	Unassigned	Good	Good	2021 or earlier	Review					<a href="#">View WB Page</a>	<a href="#">View WB on EPA Water Map</a>
12	IE_SE_12A020300	ASSALY_010	River	Wexford County Council	SAC; SPA; NSA;	Poor	Poor	Moderate	Good	2022-2027	At risk	Nutrients, Organic	Ag, DWTS			<a href="#">View WB Page</a>	<a href="#">View WB on EPA Water Map</a>
12	IE_SE_12A030200	ASKINVILLAR STREAM_010	River	Wexford County Council	SAC;	Good	Good	Good	High	2022-2027	At risk	Morphological, Nutrients	Ag, For	Urrin	LAWPRO, Restoration	<a href="#">View WB Page</a>	<a href="#">View WB on EPA Water Map</a>
12	IE_SE_12B010100	BANN_010	River	Wexford County Council	DWPA; SAC;	High	Moderate	Good	High	2022-2027	Review			Bann River	LAWPRO, Restoration	<a href="#">View WB Page</a>	<a href="#">View WB on EPA Water Map</a>
12	IE_SE_12B010200	BANN_020	River	Wexford County Council	SAC;	High	Good	Good	High	2022-2027	At risk	Morphological	HYMO	Bann River	LAWPRO, Restoration	<a href="#">View WB Page</a>	<a href="#">View WB on EPA Water Map</a>
12	IE_SE_12B010400	BANN_030	River	Wexford County Council	DWPA; SAC;	High	Good	Good	High	2022-2027	At risk	UnknownImpactType	Unknown	Bann River	LAWPRO, Restoration	<a href="#">View WB Page</a>	<a href="#">View WB on EPA Water Map</a>
12	IE_SE_12B010450	BANN_040	River	Wexford County Council	SAC;	High	Good	Good	High	2022-2027	At risk	UnknownImpactType	Unknown	Bann River	LAWPRO, Restoration	<a href="#">View WB Page</a>	<a href="#">View WB on EPA Water Map</a>
12	IE_SE_12B010600	BANN_050	River	Wexford County Council	SAC;	Good	Good	High	Good	2021 or earlier	Not at risk			Bann River	LAWPRO, Restoration	<a href="#">View WB Page</a>	<a href="#">View WB on EPA Water Map</a>
12	IE_SE_12B010900	BANN_060	River	Wexford County Council	SAC;	Good	Moderate	Moderate	Good	2022-2027	At risk	Nutrients, Organic	UWW	Bann River	LAWPRO, Restoration	<a href="#">View WB Page</a>	<a href="#">View WB on EPA Water Map</a>
12	IE_SE_12B011000	BANN_070	River	Wexford County Council	SAC;	Moderate	Moderate	Good	Good	2021 or earlier	Not at risk			Bann River	LAWPRO, Restoration	<a href="#">View WB Page</a>	<a href="#">View WB on EPA Water Map</a>
12	IE_SE_12B020040	BORO_010	River	Wexford County Council	DWPA; SAC;	Moderate	Moderate	Good	Good	2021 or earlier	Not at risk			Blackstairs GWS	NFGWS, Restoration	<a href="#">View WB Page</a>	<a href="#">View WB on EPA Water Map</a>
12	IE_SE_12B020080	BORO_020	River	Wexford County Council	SAC;	Good	Good	Good	Good	2021 or earlier	Not at risk					<a href="#">View WB Page</a>	<a href="#">View WB on EPA Water Map</a>
12	IE_SE_12B020200	BORO_030	River	Wexford County Council	SAC;	Good	Good	Good	Good	2021 or earlier	Not at risk					<a href="#">View WB Page</a>	<a href="#">View WB on EPA Water Map</a>
12	IE_SE_12B020340	BORO_040	River	Wexford County Council	SAC;	Poor	Poor	Poor	Good	2022-2027	At risk	Nutrients	Ag			<a href="#">View WB Page</a>	<a href="#">View WB on EPA Water Map</a>
12	IE_SE_12B020400	BORO_050	River	Wexford County Council	SAC;	Good	Good	Good	Good	2021 or earlier	Not at risk					<a href="#">View WB Page</a>	<a href="#">View WB on EPA Water Map</a>

12	IE_SE_12B020600	BORO_060	River	Wexford County Council	SAC; SPA; NSA;	Moderate	Good	Good	Good	2021 or earlier	Not at risk					<a href="#">View WB Page</a>	<a href="#">View WB on EPA Water Map</a>
12	IE_SE_12B030230	BROWN'S BECK BROOK_010	River	Wicklow County Council		Good	Poor	Good	Good	2021 or earlier	Not at risk			Carrigower	LAWPRO, Restoration	<a href="#">View WB Page</a>	<a href="#">View WB on EPA Water Map</a>
12	IE_SE_12B040250	BLACKLION STREAM (CARLOW)_010	River	Carlow County Council		Moderate	Moderate	Good	Good	2021 or earlier	Review			Lower Derreen	LAWPRO, Restoration	<a href="#">View WB Page</a>	<a href="#">View WB on EPA Water Map</a>
12	IE_SE_12B040400	BLACKLION STREAM (CARLOW)_020	River	Wicklow County Council		Poor	Moderate	Moderate	Good	2022-2027	At risk	Nutrients, Organic	Ag	Lower Derreen	LAWPRO, Restoration	<a href="#">View WB Page</a>	<a href="#">View WB on EPA Water Map</a>
12	IE_SE_12B050300	BORRIS STREAM (SLANEY)_010	River	Wexford County Council		Good	Moderate	Moderate	Good	2022-2027	At risk	Sediment, Nutrients	Ag			<a href="#">View WB Page</a>	<a href="#">View WB on EPA Water Map</a>
12	IE_SE_12B060500	BALLINGALE STREAM_010	River	Wexford County Council	DWPA;	Poor	Poor	Poor	Good	2022-2027	At risk	Sediment, Morphological	Ag			<a href="#">View WB Page</a>	<a href="#">View WB on EPA Water Map</a>
12	IE_SE_12B060900	BALLINGALE STREAM_020	River	Wexford County Council		Good	Moderate	Good	Good	2021 or earlier	Not at risk					<a href="#">View WB Page</a>	<a href="#">View WB on EPA Water Map</a>
12	IE_SE_12B070400	BALLYCARNEY STREAM_010	River	Wexford County Council		Moderate	Moderate	Moderate	Good	2022-2027	At risk	Morphological	Ag			<a href="#">View WB Page</a>	<a href="#">View WB on EPA Water Map</a>
12	IE_SE_12B070700	BALLYCARNEY STREAM_020	River	Wexford County Council		Moderate	Poor	Good	Good	2021 or earlier	Not at risk					<a href="#">View WB Page</a>	<a href="#">View WB on EPA Water Map</a>
12	IE_SE_12B080200	BLACKWATER STREAM (BANN)_010	River	Wexford County Council		Good	Moderate	Good	Good	2021 or earlier	Not at risk			Bann River	LAWPRO, Restoration	<a href="#">View WB Page</a>	<a href="#">View WB on EPA Water Map</a>
12	IE_SE_12B120990	Ballaghmore Distributary_010	River	Carlow County Council		Poor	Poor	Moderate	Good	2022-2027	At risk	Nutrients, Organic	Ag, Ind	Douglas (Ballon)	LAWPRO, Restoration	<a href="#">View WB Page</a>	<a href="#">View WB on EPA Water Map</a>
12	IE_SE_12C030080	CLODY_010	River	Carlow County Council	SAC;	High	High	High	High	2021 or earlier	Not at risk			Douglas (Ballon)	LAWPRO, Restoration	<a href="#">View WB Page</a>	<a href="#">View WB on EPA Water Map</a>
12	IE_SE_12C030200	CLODY_020	River	Wexford County Council	DWPA; SAC;	Good	Good	Good	Good	2021 or earlier	Not at risk					<a href="#">View WB Page</a>	<a href="#">View WB on EPA Water Map</a>
12	IE_SE_12C040200	CORBALLY STREAM_010	River	Wexford County Council		Poor	Poor	Poor	Good	2022-2027	At risk	Morphological, Nutrients	Ag, HYMO			<a href="#">View WB Page</a>	<a href="#">View WB on EPA Water Map</a>
12	IE_SE_12C040300	CORBALLY STREAM_020	River	Wexford County Council		Moderate	Good	Good	Good	2021 or earlier	Review					<a href="#">View WB Page</a>	<a href="#">View WB on EPA Water Map</a>
12	IE_SE_12C040400	CORBALLY STREAM_030	River	Wexford County Council		Poor	Moderate	Good	Good	2021 or earlier	Review					<a href="#">View WB Page</a>	<a href="#">View WB on EPA Water Map</a>
12	IE_SE_12C040900	CORBALLY STREAM_040	River	Wexford County Council	SAC;	Moderate	Moderate	Good	Good	2021 or earlier	Not at risk					<a href="#">View WB Page</a>	<a href="#">View WB on EPA Water Map</a>
12	IE_SE_12C050100	CLONMORE STREAM_010	River	Carlow County Council		Unassigned	Good	Good	Good	2021 or earlier	Review			Lower Derreen	LAWPRO, Restoration	<a href="#">View WB Page</a>	<a href="#">View WB on EPA Water Map</a>
12	IE_SE_12C060300	CARRIGOWER_010	River	Wicklow County Council		Good	Good	Good	Good	2021 or earlier	Not at risk			Carrigower	LAWPRO, Restoration	<a href="#">View WB Page</a>	<a href="#">View WB on EPA Water Map</a>
12	IE_SE_12C060600	CARRIGOWER_020	River	Wicklow County Council	SAC;	Good	Good	Good	Good	2021 or earlier	Not at risk			Carrigower	LAWPRO, Restoration	<a href="#">View WB Page</a>	<a href="#">View WB on EPA Water Map</a>
12	IE_SE_12C070300	COOLBOY_010	River	Wicklow County Council		Moderate	Good	Good	Good	2021 or earlier	Not at risk			Derry-Coolboy-Rosnastraw	LAWPRO, Restoration	<a href="#">View WB Page</a>	<a href="#">View WB on EPA Water Map</a>
12	IE_SE_12C070700	COOLBOY_020	River	Wicklow County Council	SAC;	Moderate	High	Good	High	2022-2027	Review			Derry-Coolboy-Rosnastraw	LAWPRO, Restoration	<a href="#">View WB Page</a>	<a href="#">View WB on EPA Water Map</a>
12	IE_SE_12C080300	CAMOLIN STREAM_010	River	Wexford County Council		Moderate	Moderate	Moderate	Good	2022-2027	At risk	Morphological, Nutrients, Organic	For, Ag	Bann River	LAWPRO, Restoration	<a href="#">View WB Page</a>	<a href="#">View WB on EPA Water Map</a>
12	IE_SE_12C090100	CLONMORE RIVER (SLANEY)_010	River	Wexford County Council		Poor	Good	Poor	Good	2022-2027	At risk	Nutrients	Ag			<a href="#">View WB Page</a>	<a href="#">View WB on EPA Water Map</a>
12	IE_SE_12C100500	CLASHAVEY RIVER_010	River	Carlow County Council		Moderate	Moderate	Moderate	Good	2022-2027	At risk	Morphological, Nutrients	Ag, For	Douglas (Ballon)	LAWPRO, Restoration	<a href="#">View WB Page</a>	<a href="#">View WB on EPA Water Map</a>
12	IE_SE_12C130100	COOLREE STREAM_010	River	Wexford County Council	DWPA; SAC; SPA; NSA;	Unassigned	Moderate	Moderate	Good	2022-2027	Review					<a href="#">View WB Page</a>	<a href="#">View WB on EPA Water Map</a>
12	IE_SE_12D010050	DERREEN_010	River	Wicklow County Council	SAC;	Good	High	High	High	2021 or earlier	Not at risk			Derreen and Douglas (Kiltegan)	LAWPRO, Restoration	<a href="#">View WB Page</a>	<a href="#">View WB on EPA Water Map</a>
12	IE_SE_12D010100	DERREEN_020	River	Wicklow County Council	SAC;	Unassigned	High	Good	Good	2021 or earlier	Not at risk			Derreen and Douglas (Kiltegan)	LAWPRO, Restoration	<a href="#">View WB Page</a>	<a href="#">View WB on EPA Water Map</a>
12	IE_SE_12D010150	DERREEN_030	River	Wicklow County Council	SAC;	Good	Good	Good	Good	2021 or earlier	Not at risk			Derreen and Douglas (Kiltegan)	LAWPRO, Restoration	<a href="#">View WB Page</a>	<a href="#">View WB on EPA Water Map</a>
12	IE_SE_12D010200	DERREEN_040	River	Wicklow County Council	SAC;	Unassigned	Good	Good	Good	2021 or earlier	Not at risk			Derreen and Douglas (Kiltegan)	LAWPRO, Restoration	<a href="#">View WB Page</a>	<a href="#">View WB on EPA Water Map</a>
12	IE_SE_12D010300	DERREEN_050	River	Carlow County Council	DWPA; SAC;	Moderate	Good	Good	Good	2021 or earlier	Not at risk			Derreen and Douglas (Kiltegan)	LAWPRO, Restoration	<a href="#">View WB Page</a>	<a href="#">View WB on EPA Water Map</a>
12	IE_SE_12D010420	DERREEN_060	River	Carlow County Council	SAC;	Moderate	Good	Good	Good	2021 or earlier	Not at risk			Derreen and Douglas (Kiltegan)	LAWPRO, Restoration	<a href="#">View WB Page</a>	<a href="#">View WB on EPA Water Map</a>
12	IE_SE_12D010500	DERREEN_070	River	Carlow County Council	SAC;	Good	Good	Good	Good	2021 or earlier	Not at risk			Derreen and Douglas (Kiltegan)	LAWPRO, Restoration	<a href="#">View WB Page</a>	<a href="#">View WB on EPA Water Map</a>
12	IE_SE_12D010550	DERREEN_080	River	Carlow County Council	SAC;	Good	Good	Good	Good	2021 or earlier	Not at risk			Lower Derreen	LAWPRO, Restoration	<a href="#">View WB Page</a>	<a href="#">View WB on EPA Water Map</a>
12	IE_SE_12D010600	DERREEN_090	River	Carlow County Council	SAC;	Unassigned	Good	Good	Good	2021 or earlier	Not at risk			Lower Derreen	LAWPRO, Restoration	<a href="#">View WB Page</a>	<a href="#">View WB on EPA Water Map</a>
12	IE_SE_12D010800	DERREEN_100	River	Carlow County Council	SAC;	Moderate	Good	Good	Good	2021 or earlier	Not at risk			Lower Derreen	LAWPRO, Restoration	<a href="#">View WB Page</a>	<a href="#">View WB on EPA Water Map</a>
12	IE_SE_12D020100	DERRY_010	River	Wicklow County Council		Moderate	Moderate	Moderate	Good	2022-2027	At risk	Morphological, Nutrients	Ag, For	Derry-Coolboy-Rosnastraw	LAWPRO, Restoration	<a href="#">View WB Page</a>	<a href="#">View WB on EPA Water Map</a>
12	IE_SE_12D020350	DERRY_020	River	Wicklow County Council	DWPA; SAC;	Moderate	Moderate	Good	Good	2021 or earlier	Not at risk			Derry-Coolboy-Rosnastraw	LAWPRO, Restoration	<a href="#">View WB Page</a>	<a href="#">View WB on EPA Water Map</a>
12	IE_SE_12D020500	DERRY_030	River	Wicklow County Council	SAC;	Moderate	Moderate	Good	Good	2021 or earlier	Not at risk			Derry-Coolboy-Rosnastraw	LAWPRO, Restoration	<a href="#">View WB Page</a>	<a href="#">View WB on EPA Water Map</a>
12	IE_SE_12D020700	DERRY_040	River	Wicklow County Council	SAC;	Moderate	Moderate	Moderate	Good	2022-2027	At risk	Nutrients, UnknownImpactType	Unknown, Ag	Derry-Coolboy-Rosnastraw	LAWPRO, Restoration	<a href="#">View WB Page</a>	<a href="#">View WB on EPA Water Map</a>
12	IE_SE_12D020800	DERRY_050	River	Wicklow County Council	SAC;	Moderate	Good	Good	Good	2021 or earlier	Review			Derry-Coolboy-Rosnastraw	LAWPRO, Restoration	<a href="#">View WB Page</a>	<a href="#">View WB on EPA Water Map</a>
12	IE_SE_12D020910	DERRY_060	River	Wexford County Council	SAC;	Moderate	Good	High	Good	2021 or earlier	Not at risk			Derry-Coolboy-Rosnastraw	LAWPRO, Restoration	<a href="#">View WB Page</a>	<a href="#">View WB on EPA Water Map</a>

12	IE_SE_12D030200	DOUGLAS (BALLON)_010	River	Carlow County Council		Poor	Poor	Poor	Good	2022-2027	At risk	Nutrients, Organic	Ag	Douglas (Ballon)	LAWPRO, Restoration	<a href="#">View WB Page</a>	<a href="#">View WB on EPA Water Map</a>
12	IE_SE_12D030400	DOUGLAS (BALLON)_020	River	Carlow County Council		Poor	Moderate	Moderate	Good	2022-2027	Review			Douglas (Ballon)	LAWPRO, Restoration	<a href="#">View WB Page</a>	<a href="#">View WB on EPA Water Map</a>
12	IE_SE_12D040300	DOUGLAS (KILTEGAN)_010	River	Wicklow County Council		Moderate	Moderate	Good	Good	2021 or earlier	Review			Derreen and Douglas (Kiltegan)	LAWPRO, Restoration	<a href="#">View WB Page</a>	<a href="#">View WB on EPA Water Map</a>
12	IE_SE_12D040700	DOUGLAS (KILTEGAN)_020	River	Wicklow County Council	SAC;	Poor	Moderate	Good	Good	2021 or earlier	Review			Derreen and Douglas (Kiltegan)	LAWPRO, Restoration	<a href="#">View WB Page</a>	<a href="#">View WB on EPA Water Map</a>
12	IE_SE_12G010200	GLASHA (SLANEY)_010	River	Wexford County Council	SAC;	Moderate	Moderate	Moderate	Good	2022-2027	At risk	Nutrients	Ag	Mullawn GWS	NFGWS, Restoration	<a href="#">View WB Page</a>	<a href="#">View WB on EPA Water Map</a>
12	IE_SE_12J040840	JOHNSTOWN (Wexford)_010	River	Wexford County Council		Unassigned	Moderate	Moderate	Good	2022-2027	Review					<a href="#">View WB Page</a>	<a href="#">View WB on EPA Water Map</a>
12	IE_SE_12K010250	KNICKEEN_010	River	Wicklow County Council	SAC;	Good	High	High	High	2021 or earlier	Not at risk					<a href="#">View WB Page</a>	<a href="#">View WB on EPA Water Map</a>
12	IE_SE_12K030400	KILLEEN STREAM (BORO)_010	River	Wexford County Council	SAC;	Good	Good	Good	Good	2021 or earlier	Not at risk					<a href="#">View WB Page</a>	<a href="#">View WB on EPA Water Map</a>
12	IE_SE_12K040800	KILDAVIN STREAM_010	River	Carlow County Council		Moderate	Moderate	Moderate	Good	2022-2027	At risk	Hydrological, Nutrients, Organic	UWW, Ab	Douglas (Ballon)	LAWPRO, Restoration	<a href="#">View WB Page</a>	<a href="#">View WB on EPA Water Map</a>
12	IE_SE_12K110490	KILGIBBON_010	River	Wexford County Council	SAC; SPA; NSA;	Unassigned	Good	Good	Good	2021 or earlier	Review			Borrmount GWS	NFGWS, Protection	<a href="#">View WB Page</a>	<a href="#">View WB on EPA Water Map</a>
12	IE_SE_12K460150	KNOCKBOY_010	River	Carlow County Council	SAC;	Unassigned	High	Good	Good	2021 or earlier	Review			Derreen and Douglas (Kiltegan)	LAWPRO, Restoration	<a href="#">View WB Page</a>	<a href="#">View WB on EPA Water Map</a>
12	IE_SE_12L010080	LASK_010	River	Wexford County Council		Moderate	Moderate	High	Good	2021 or earlier	Not at risk			Bann River	LAWPRO, Restoration	<a href="#">View WB Page</a>	<a href="#">View WB on EPA Water Map</a>
12	IE_SE_12L010200	LASK_020	River	Wexford County Council		Poor	Moderate	Moderate	Good	2022-2027	At risk	Nutrients, Organic	Ind	Bann River	LAWPRO, Restoration	<a href="#">View WB Page</a>	<a href="#">View WB on EPA Water Map</a>
12	IE_SE_12L020400	LITTLE SLANEY_010	River	Wicklow County Council	DWPA; SAC;	Moderate	Good	Good	Good	2021 or earlier	Not at risk					<a href="#">View WB Page</a>	<a href="#">View WB on EPA Water Map</a>
12	IE_SE_12M010200	MINE_010	River	Wexford County Council		Moderate	Moderate	Good	Good	2021 or earlier	Not at risk					<a href="#">View WB Page</a>	<a href="#">View WB on EPA Water Map</a>
12	IE_SE_12M010600	MINE_020	River	Wicklow County Council		Poor	Good	Good	Good	2021 or earlier	Review			Mine	Wicklow County Council, Protection	<a href="#">View WB Page</a>	<a href="#">View WB on EPA Water Map</a>
12	IE_SE_12M810970	MUCHWOOD_010	River	Wexford County Council	SAC; SPA; NSA;	Unassigned	Moderate	Good	Good	2021 or earlier	Review					<a href="#">View WB Page</a>	<a href="#">View WB on EPA Water Map</a>
12	IE_SE_12M860440	MILLTOWN ROSLARE_010	River	Wexford County Council	SAC; SPA; NSA;	Unassigned	Moderate	Moderate	Good	2022-2027	Review			Wexford Harbour	LAWPRO, Restoration	<a href="#">View WB Page</a>	<a href="#">View WB on EPA Water Map</a>
12	IE_SE_12R010200	ROSTRAW STREAM_010	River	Wexford County Council		Moderate	Moderate	Good	Good	2021 or earlier	Not at risk			Derry-Coolboy-Rosnaw	LAWPRO, Restoration	<a href="#">View WB Page</a>	<a href="#">View WB on EPA Water Map</a>
12	IE_SE_12R010400	ROSTRAW STREAM_020	River	Wicklow County Council		Moderate	Moderate	Moderate	Good	2022-2027	At risk	Nutrients, Organic	Ag	Derry-Coolboy-Rosnaw	LAWPRO, Restoration	<a href="#">View WB Page</a>	<a href="#">View WB on EPA Water Map</a>
12	IE_SE_12R020920	RATHSPICK_010	River	Wexford County Council	SAC; SPA; NSA;	Unassigned	Moderate	Moderate	Good	2022-2027	Review					<a href="#">View WB Page</a>	<a href="#">View WB on EPA Water Map</a>
12	IE_SE_12S010500	SHILLELAGH_010	River	Wicklow County Council		Good	Good	Moderate	Good	2022-2027	Review			Derry-Coolboy-Rosnaw	LAWPRO, Restoration	<a href="#">View WB Page</a>	<a href="#">View WB on EPA Water Map</a>
12	IE_SE_12S020100	SLANEY_010	River	Wicklow County Council	SAC; Fish;	High	High	High	High	2021 or earlier	Not at risk					<a href="#">View WB Page</a>	<a href="#">View WB on EPA Water Map</a>
12	IE_SE_12S020200	SLANEY_020	River	Wicklow County Council	SAC; Fish;	High	High	High	High	2021 or earlier	Not at risk					<a href="#">View WB Page</a>	<a href="#">View WB on EPA Water Map</a>
12	IE_SE_12S020400	SLANEY_030	River	Wicklow County Council	SAC; Fish;	Good	Good	Moderate	Good	2022-2027	At risk	UnknownImpactType	Unknown	Slaney	LAWPRO, Restoration	<a href="#">View WB Page</a>	<a href="#">View WB on EPA Water Map</a>
12	IE_SE_12S020600	SLANEY_040	River	Wicklow County Council	SAC; Fish;	High	High	High	High	2021 or earlier	Not at risk			Slaney	LAWPRO, Restoration	<a href="#">View WB Page</a>	<a href="#">View WB on EPA Water Map</a>
12	IE_SE_12S020700	SLANEY_050	River	Wicklow County Council	SAC; Fish;	Poor	Moderate	High	Good	2021 or earlier	Not at risk			Slaney	LAWPRO, Restoration	<a href="#">View WB Page</a>	<a href="#">View WB on EPA Water Map</a>
12	IE_SE_12S020800	SLANEY_060	River	Wicklow County Council	SAC; Fish;	Moderate	Moderate	Moderate	Good	2022-2027	At risk	Nutrients, Organic	UR	Slaney	LAWPRO, Restoration	<a href="#">View WB Page</a>	<a href="#">View WB on EPA Water Map</a>
12	IE_SE_12S021010	SLANEY_070	River	Wicklow County Council	DWPA; SAC; Fish;	Moderate	Good	Good	Good	2021 or earlier	Not at risk			Slaney	LAWPRO, Restoration	<a href="#">View WB Page</a>	<a href="#">View WB on EPA Water Map</a>
12	IE_SE_12S021100	SLANEY_080	River	Carlow County Council	SAC; Fish;	Moderate	Good	Good	Good	2021 or earlier	Not at risk			Slaney	LAWPRO, Restoration	<a href="#">View WB Page</a>	<a href="#">View WB on EPA Water Map</a>
12	IE_SE_12S021200	SLANEY_090	River	Carlow County Council	SAC; Fish;	Moderate	Moderate	Moderate	Good	2022-2027	At risk	Nutrients	Ag	Slaney	LAWPRO, Restoration	<a href="#">View WB Page</a>	<a href="#">View WB on EPA Water Map</a>
12	IE_SE_12S021400	SLANEY_100	River	Carlow County Council	DWPA; SAC; Fish;	Poor	Moderate	Moderate	Good	2022-2027	At risk	Nutrients, Organic	Ag, UWW	Slaney	LAWPRO, Restoration	<a href="#">View WB Page</a>	<a href="#">View WB on EPA Water Map</a>
12	IE_SE_12S021600	SLANEY_110	River	Carlow County Council	SAC; Fish;	Moderate	Moderate	Moderate	Good	2022-2027	At risk	Nutrients	Ag	Slaney	LAWPRO, Restoration	<a href="#">View WB Page</a>	<a href="#">View WB on EPA Water Map</a>
12	IE_SE_12S021800	SLANEY_120	River	Carlow County Council	DWPA; SAC; Fish;	Moderate	Moderate	Moderate	Good	2022-2027	At risk	UnknownImpactType	Unknown	Slaney	LAWPRO, Restoration	<a href="#">View WB Page</a>	<a href="#">View WB on EPA Water Map</a>
12	IE_SE_12S021850	SLANEY_130	River	Wexford County Council	SAC; Fish;	Unassigned	Moderate	Good	Good	2021 or earlier	Not at risk					<a href="#">View WB Page</a>	<a href="#">View WB on EPA Water Map</a>
12	IE_SE_12S022000	SLANEY_140	River	Wexford County Council	SAC; Fish;	Good	Good	Good	Good	2021 or earlier	Not at risk					<a href="#">View WB Page</a>	<a href="#">View WB on EPA Water Map</a>
12	IE_SE_12S022100	SLANEY_150	River	Wexford County Council	SAC; Fish;	Good	Good	Good	Good	2021 or earlier	Not at risk					<a href="#">View WB Page</a>	<a href="#">View WB on EPA Water Map</a>
12	IE_SE_12S022200	SLANEY_160	River	Wexford County Council	SAC; Fish;	Good	Good	Good	Good	2021 or earlier	Not at risk					<a href="#">View WB Page</a>	<a href="#">View WB on EPA Water Map</a>
12	IE_SE_12S022300	SLANEY_170	River	Wexford County Council	DWPA; SAC; Fish; NSA;	Good	Good	Good	Good	2021 or earlier	Not at risk					<a href="#">View WB Page</a>	<a href="#">View WB on EPA Water Map</a>
12	IE_SE_12S030100	SOW_010	River	Wexford County Council		Moderate	Moderate	Moderate	Good	2022-2027	At risk	Morphological, Nutrients, Organic	For, Ag, HYMO, DWTS, UR, UWW	Sow	LAWPRO, Restoration	<a href="#">View WB Page</a>	<a href="#">View WB on EPA Water Map</a>
12	IE_SE_12S030200	SOW_020	River	Wexford County Council	DWPA;	Unassigned	Moderate	Moderate	Good	2022-2027	Review			Sow	LAWPRO, Restoration	<a href="#">View WB Page</a>	<a href="#">View WB on EPA Water Map</a>
12	IE_SE_12S030370	SOW_030	River	Wexford County Council		Moderate	Moderate	Good	Good	2021 or earlier	Not at risk			Sow	LAWPRO, Restoration	<a href="#">View WB Page</a>	<a href="#">View WB on EPA Water Map</a>

12	IE_SE_12S030600	SOW_040	River	Wexford County Council	SAC; SPA; NSA;	Unassigned	Moderate	Good	Good	2021 or earlier	Review			Sow	LAWPRO, Restoration	<a href="#">View WB Page</a>	<a href="#">View WB on EPA Water Map</a>
12	IE_SE_12S350630	STEPHENSTOWN_010	River	Wexford County Council		Unassigned	Moderate	Moderate	Good	2022-2027	Review					<a href="#">View WB Page</a>	<a href="#">View WB on EPA Water Map</a>
12	IE_SE_12S440630	SALVILLE_or_MOTABEG_010	River	Wexford County Council	SAC; SPA; NSA;	Unassigned	Unassigned	Good	Good	2021 or earlier	Review					<a href="#">View WB Page</a>	<a href="#">View WB on EPA Water Map</a>
12	IE_SE_12T010400	TINNACROSS STREAM_010	River	Wexford County Council		Good	Good	Moderate	Good	2022-2027	Review					<a href="#">View WB Page</a>	<a href="#">View WB on EPA Water Map</a>
12	IE_SE_12T010600	TINNACROSS STREAM_020	River	Wexford County Council	SAC;	Good	Good	Moderate	Good	2022-2027	At risk	Nutrients, Organic	Ag, DWTS			<a href="#">View WB Page</a>	<a href="#">View WB on EPA Water Map</a>
12	IE_SE_12T020700	TINNOKILLA STREAM_010	River	Wexford County Council		Moderate	Moderate	Moderate	Good	2022-2027	At risk	Sediment, Nutrients	Ag, M+Q			<a href="#">View WB Page</a>	<a href="#">View WB on EPA Water Map</a>
12	IE_SE_12U010050	URRIN_010	River	Wexford County Council	SAC;	Good	High	High	High	2021 or earlier	Not at risk			Urrin	LAWPRO, Restoration	<a href="#">View WB Page</a>	<a href="#">View WB on EPA Water Map</a>
12	IE_SE_12U010200	URRIN_020	River	Wexford County Council	SAC;	Moderate	Moderate	Good	Good	2021 or earlier	Not at risk			Urrin	LAWPRO, Restoration	<a href="#">View WB Page</a>	<a href="#">View WB on EPA Water Map</a>
12	IE_SE_12U010300	URRIN_030	River	Wexford County Council		Good	Moderate	Moderate	Good	2022-2027	At risk	Morphological	HYMO	Urrin	LAWPRO, Restoration	<a href="#">View WB Page</a>	<a href="#">View WB on EPA Water Map</a>
12	IE_SE_12U010360	URRIN_040	River	Wexford County Council		Moderate	Good	Moderate	Good	2022-2027	At risk	Nutrients, Organic	DWTS, Ag	Urrin	LAWPRO, Restoration	<a href="#">View WB Page</a>	<a href="#">View WB on EPA Water Map</a>
12	IE_SE_12U010500	URRIN_050	River	Wexford County Council	SAC; NSA;	Moderate	Moderate	Moderate	Good	2022-2027	At risk	Nutrients, Organic	Ag, UR	Urrin	LAWPRO, Restoration	<a href="#">View WB Page</a>	<a href="#">View WB on EPA Water Map</a>
12	IE_SE_12W010550	WHITEFORT_010	River	Wexford County Council	SAC; SPA; NSA;	Unassigned	Poor	Good	Good	2021 or earlier	Review					<a href="#">View WB Page</a>	<a href="#">View WB on EPA Water Map</a>
12	IE_SE_12W330990	White Gap_010	River	Wexford County Council	SAC; SPA; NSA;	Unassigned	Moderate	Moderate	Good	2022-2027	Review			Wexford Harbour	LAWPRO, Restoration	<a href="#">View WB Page</a>	<a href="#">View WB on EPA Water Map</a>
12	IE_SE_040_0100	North Slob Channels	Transitional	Wexford County Council	SAC; SPA;	Bad	Bad	Moderate	Good	2022-2027	At risk	Nutrients, Organic	Ag			<a href="#">View WB Page</a>	<a href="#">View WB on EPA Water Map</a>
12	IE_SE_040_0200	Lower Slaney Estuary	Transitional	Wexford County Council	SAC; SPA; SF; NSA;	Poor	Poor	Poor	Good	2022-2027	At risk	Nutrients	Ag, UWW			<a href="#">View WB Page</a>	<a href="#">View WB on EPA Water Map</a>
12	IE_SE_040_0300	Upper Slaney Estuary	Transitional	Wexford County Council	SAC; Fish; SPA; NSA;	Good	Good	Moderate	Good	2022-2027	At risk	Nutrients	Ag			<a href="#">View WB Page</a>	<a href="#">View WB on EPA Water Map</a>
12	IE_SE_040_0400	South Slob Channel	Transitional	Wexford County Council	SPA;	Unassigned	Bad	Moderate	Good	2022-2027	Review					<a href="#">View WB Page</a>	<a href="#">View WB on EPA Water Map</a>