



Cycle 3

HA 10 Ovoca-Vartry Catchment Report, May
2024

Introduction

Water Quality
Summary

High Status
Objectives

Water Quality
Changes

WFD Risk

Significant
Pressures

Action

Summary
Information

Introduction

This report provides an overview of the water quality in the Ovoca-Vartry Catchment and the pressures impacting on water quality. This report is based on data up to 2021. The latest water quality data, dashboards and maps throughout this report are available on catchments.ie and [EPA Water Map](#).

The Ovoca-Vartry Catchment includes the area drained by the Rivers Avoca and Vartry and by all streams entering tidal water between Sorrento Point, Co. Dublin and Kilmichael Point, Co. Wexford, draining a total area of 1,247km². The largest urban centre in the catchment is Bray. The other main urban centres in this catchment are Dun Laoghaire-Rathdown, Arklow, Wicklow Town, Rathnew, Newtown Mount Kennedy, Greystones, Delgany and Kilcoole.

The Ovoca-Vartry catchment is divided into 10 subcatchments with 71 river waterbodies, 11 lake waterbodies, 4 transitional waterbodies, 3 coastal waterbodies and 12 groundwater bodies.

[View the Ovoca-Vartry Catchment on the EPA Water Map](#)

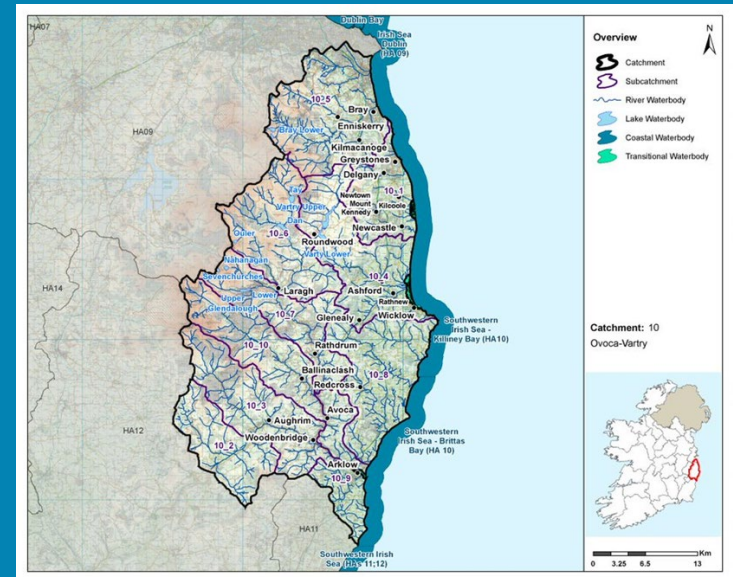
Previous Catchment Assessments

Previous catchment assessments, which provide additional historic context and information, are archived on catchments.ie:

- [Cycle 2 Catchment Assessments – published September 2018](#)
- [Cycle 3 Draft Catchment Assessments – published September 2021](#)

Online Dashboards

Links to online dashboards are provided in this report – these numbers may vary from those in this document as time progresses and the online dashboards are updated based on the latest data and scientific assessments.



Overview of Subcatchments in the Ovoca-Vartry Catchment

Water Quality Summary

Introduction

Water Quality Summary

High Status Objectives

Water Quality Changes

WFD Risk

Significant Pressures

Action

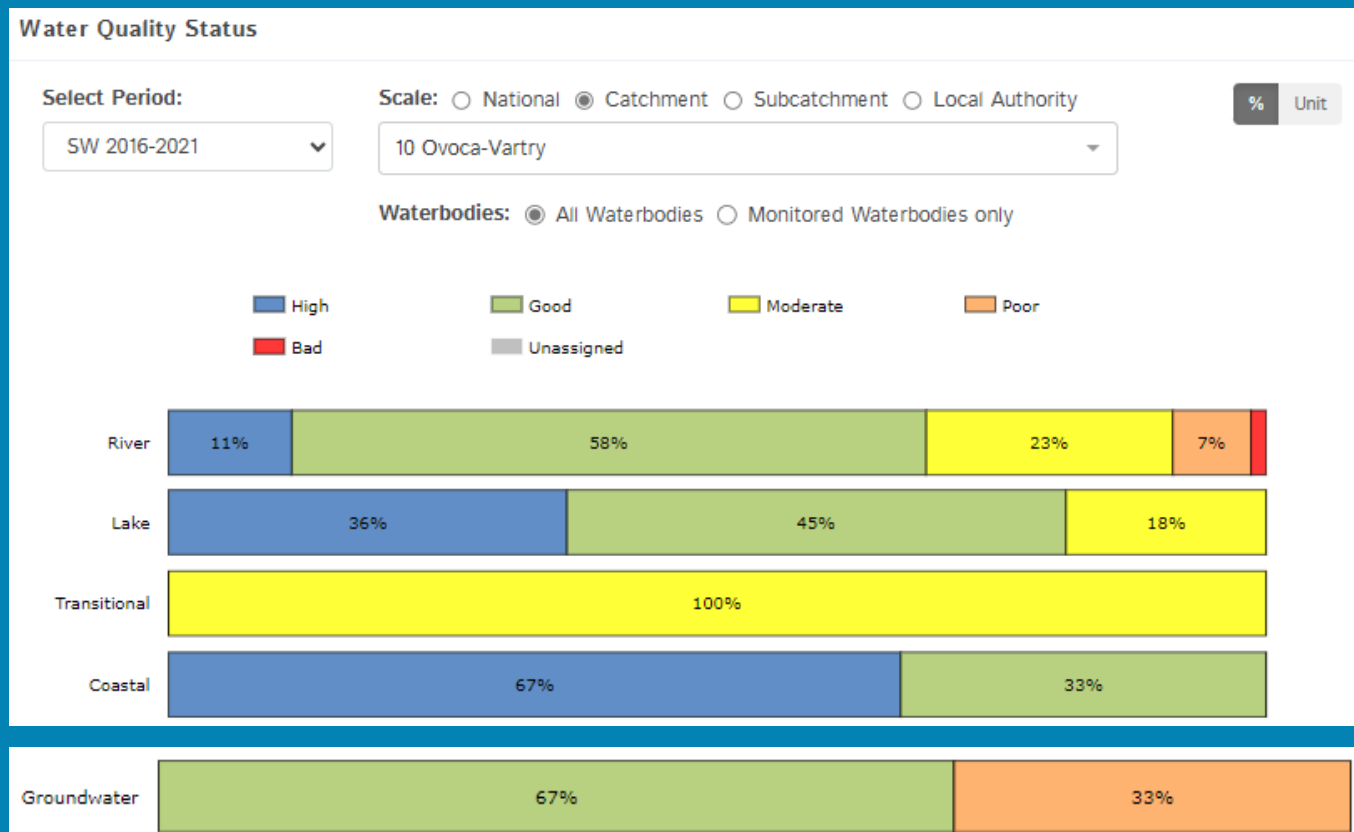
Summary Information

The dashboard below provides a breakdown of water quality status for surface and groundwater bodies in the Ovoca-Vartry Catchment.

A total of 69% of surface waterbodies were at Good or High Ecological Status in the 2016-2021 monitoring period. Sixty-seven percent of groundwater bodies were at Good status.

Go to EPA Water Maps for WFD Status

[EPA Water Map](#)



Water quality status 2016-2021 for the Ovoca-Vartry Catchment. **View Online Dashboard:**

<https://www.catchments.ie/data/#/dashboard/waterquality>

High Status Objective Waterbodies

Introduction

High status waters are prioritised for protection and action.

Water Quality Summary

There are eight waterbodies with a **High Ecological Status Objective (HSO)** in the Ovoca-Vartry Catchment, with three currently not meeting their environmental objective of High.

High Status Objectives

Grants for septic tank upgrades may be available in high status objective catchment areas - you can learn more and check your Eircode for eligibility here: <https://www.gov.ie/en/publication/6cc1e-domestic-waste-water-treatment-systems-septic-tanks>

[View HSO river waterbodies in this catchment.](#)

See *Status and Risk / High Status Objective* for other waterbody types.

Water Quality Changes

Water Quality Status - High Status Objective Waterbodies

Select Type: Scale: Catchment Local Authority

	SW 2007-2009	SW 2010-2012	SW 2010-2015	SW 2013-2018	SW 2016-2021
ASKANAGAP STREAM_010 (River)	High	High	High	High	High
AVONMORE_010 (River)	High	Moderate	Moderate	Good	Moderate
AVONMORE_020 (River)	High	High	Good	Good	Moderate
BALLYCREEN BROOK_020 (River)	Moderate	High	High	High	High
DARGLE_010 (River)	High	Good	Good	Good	Good
GLENCULLEN_010 (River)	Good	High	Good	High	High
Southwestern Irish Sea - Killiney Bay (HA10) (Coastal)	High	Good	High	High	High
VARTRY_010 (River)	Good	High	High	Good	High

WFD Risk

Significant Pressures

Action

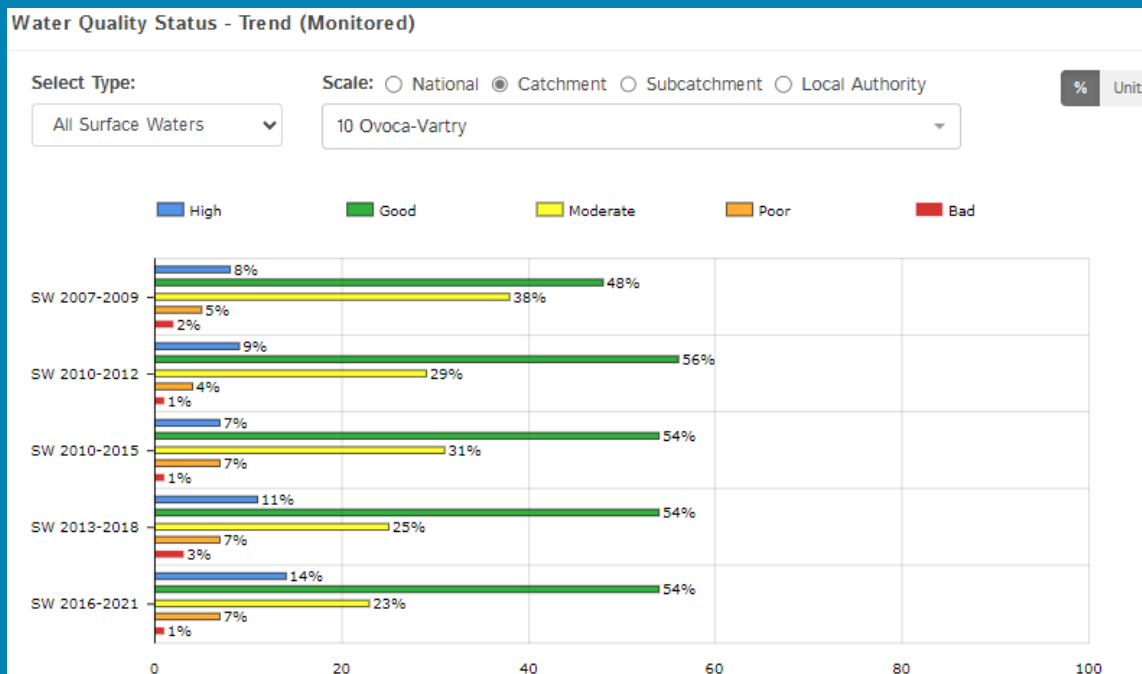
Summary Information

Water quality status for High Ecological Status Objective waterbodies.

View Online Dashboard: <https://www.catchments.ie/data/#/dashboard/waterquality>

Water Quality Changes

Below illustrates the changes in ecological status in monitored surface waterbodies over the last five monitoring cycles in the Ovoca-Vartry Catchment. Nationally while there have been improvements in some waterbodies, these have been offset by declines elsewhere.



Ecological status trends for monitored surface waterbodies over the last five monitoring cycles in the Ovoca-Vartry Catchment.

View online dashboard: <https://www.catchments.ie/data/#/dashboard/waterquality>

A total of 72 (71%) waterbodies are currently meeting their environmental objective of Good or High Ecological Status.

	Total	Achieving Environmental Objectives (2016-2021)	High Status Environmental Objectives Waterbodies	Achieving High Status Environmental Objectives (2016-2021)
Rivers	71	51 (72%)	7	4 (57%)
Canals	-	-	-	-
Lakes	11	9 (82%)	0	0 (0%)
Transitional	4	0 (0%)	0	0 (0%)
Coastal	3	3 (100%)	1	1 (100%)
Groundwater	12	9 (75%)	0	0 (0%)

Introduction

Water Quality Summary

High Status Objectives

Water Quality Changes

WFD Risk

Significant Pressures

Action

Summary Information

WFD Risk

Introduction

Water Quality Summary

High Status Objectives

Water Quality Changes

WFD Risk

Significant Pressures

Action

Summary Information

A total of 27 (27%) waterbodies are *At Risk* of not meeting their environmental objective in the Ovoca-Vartry Catchment, while 21 (21%) are under *Review* and 53 (53%) are *Not At Risk*.

Go to [EPA Water Map](#) to see *WFD Risk for this catchment*



WFD Risk for the Ovoca-Vartry Catchment based on 2016-2021 data.

View Online Dashboard: <https://www.catchments.ie/data/#/dashboard/waterquality>

There are currently four heavily modified waterbodies (HMWBs) in the Ovoca-Vartry catchment (Varty Lower, Varty Upper, Nahanagan, VARTRY_020). Three are *Not At Risk*, while Nahanagan is under *Review*.

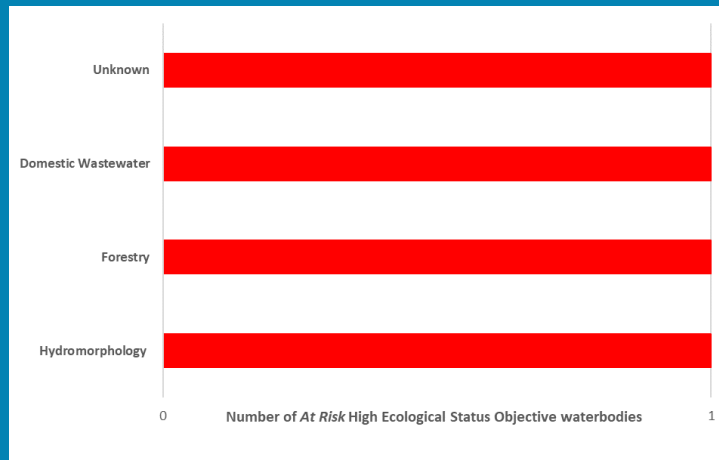
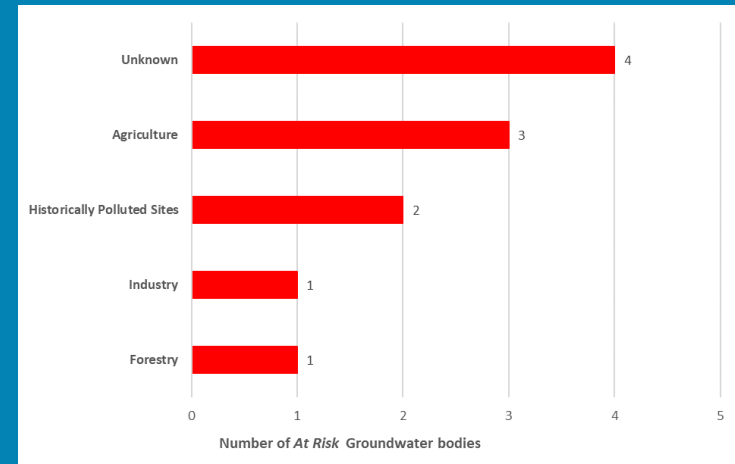
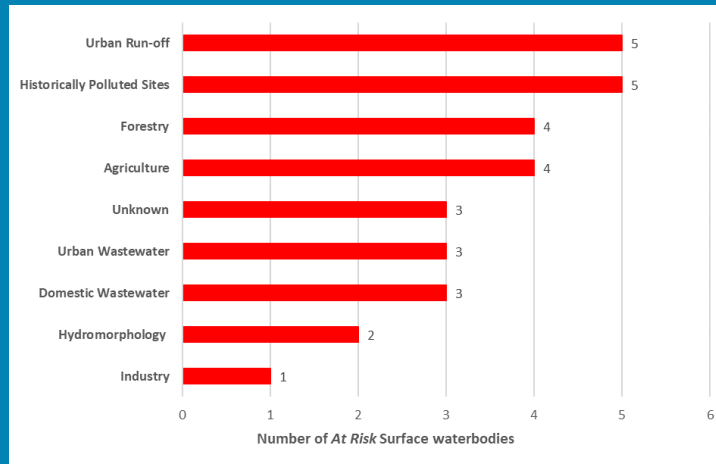
There are no artificial waterbodies in the Ovoca-Vartry Catchment.

The [EPA's characterisation outcome report](#) has more information on WFD Risk

Click [here](#) for more information on significant pressures

Significant Pressures driving risk

Significant pressure types impacting the 20 *At Risk* surface waterbodies and seven groundwater bodies are broken down in the figures below, including significant pressure information for the three *At Risk* High Ecological Status Objective waterbodies.



The issues driven by these pressures are mainly nutrient pollution, organic pollution and chemical pollution impacts for surface water, and chemical quality diminution for surface water, nutrient pollution and chemical pollution for groundwaters. For more information, see <https://www.catchments.ie/data/#/dashboard/pressure?k=i351zs>.

Go to the Summary Information section to get significant pressure and issue data for At Risk waterbodies within the Ovoca-Vartry Catchment.

Introduction

Water Quality Summary

High Status Objectives

Water Quality Changes

WFD Risk

Significant Pressures

Action

Summary Information

Introduction

Water Quality
Summary

High Status
Objectives

Water Quality
Changes

WFD Risk

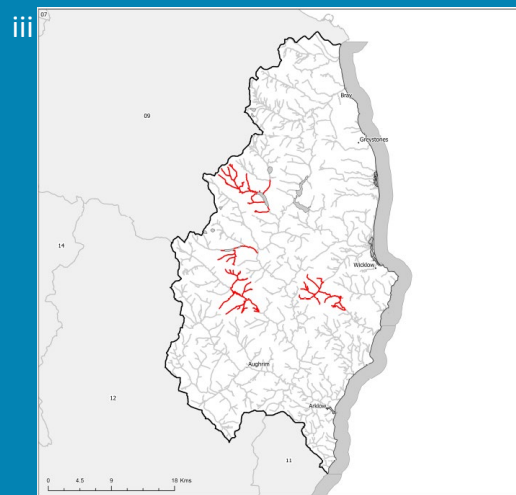
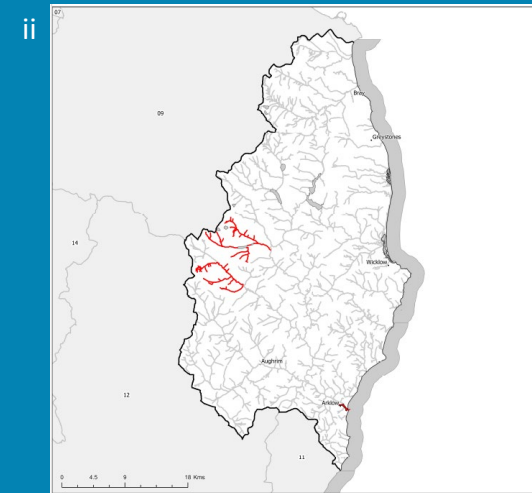
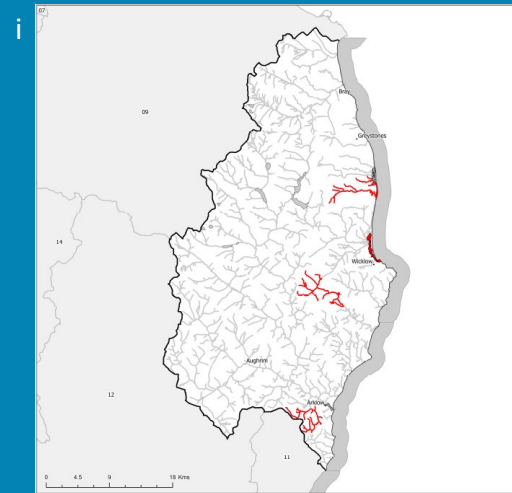
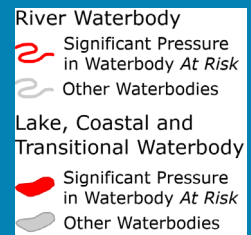
Significant
Pressures

Action

Summary
Information

Significant Pressures

Agriculture, and historically polluted sites are the top significant pressures, both impacting 26% of the 27 *At Risk* waterbodies within the Ovoca-Vartry Catchment, followed by 19% impacted by forestry.



The catchments.ie dashboards will show all significant pressures identified for this catchment.

www.catchments.ie/data/#/dashboard/p/ressure

Go to the [EPA Water Maps](#) for the locations of all significant pressure types identified for this catchment

Locations of At Risk surface waterbodies impacted by i) Agriculture, ii) Historically Polluted Sites and iii) Forestry.

Introduction

Water Quality
Summary

High Status
Objectives

Water Quality
Changes

WFD Risk

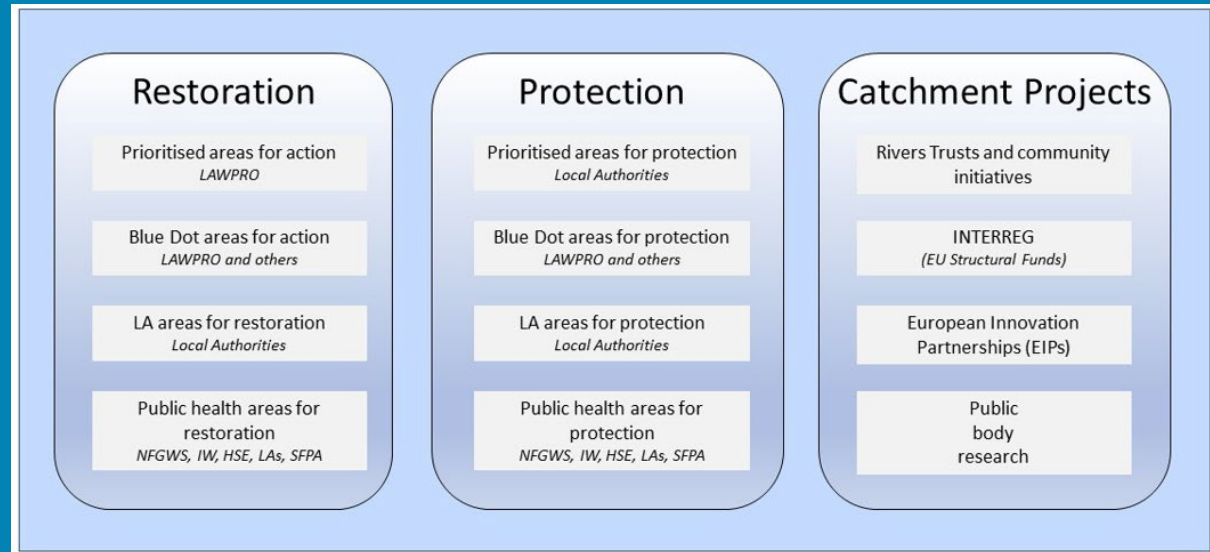
Significant
Pressures

Action

Summary
Information

Priority Areas for Action

A number of waterbodies have been prioritised through the selection of Areas for Action. There were four Priority Areas for Action identified for the second river basin management planning cycle in the Ovoca-Vartry Catchment. This has increased to a total of 14 Areas for Restoration, eight Areas for Protection and four Catchment Projects for the third cycle. ***Go to the summary information section to get Area for Action information for waterbodies within the Ovoca-Vartry Catchment.***



Types of Areas for Action under the third cycle River Basin Management Plan

- View the current progress of Areas for Action and Summary Reports completed by LAWPRO, on catchments.ie and the EPA Water Map:
 - <https://www.catchments.ie/data/#/areaforaction>
 - https://gis.epa.ie/EPAMaps/default?easting=?&northing=?&lid=EPA:WFD_AreasForAction
- LAWPRO have also published detailed desktop studies on Prioritised Areas for Action (PAAs) which are available their website: <https://lawaters.ie/desktop-studies/>
- Information on Areas for Action for the second cycle is available in Cycle 2 Catchment Assessments which have been archived on catchments.ie: <https://www.catchments.ie/download/cycle-2-catchment-assessments-published-september-2018/>

Introduction

Water Quality
Summary

High Status
Objectives

Water Quality
Changes

WFD Risk

Significant
Pressures

Action

Summary
Information

Summary information for all waterbodies in the Ovoca-Vartry Catchment

The next page provides a table with a breakdown of key information for all waterbodies in this catchment. The key is provided below. Additional information for each waterbody is available on <https://www.catchments.ie/data>, including a breakdown of status, a monitoring schedule for monitored waterbodies and downloadable chemistry results, where available.

Protected Area categories	BW: Bathing Water DW: Drinking Water Fish: Salmonid Waters NSA: Nutrient Sensitive Areas SAC: Special Area of Conservation, Natura 2000 (water dependent habitats and species) SF: Shellfish Area SPA: Special Area of Protection, Natura 2000 (water dependent habitat and species)
Significant pressure* types categories <i>* For At Risk waterbodies only</i>	Ab: Abstractions Ag: Agriculture Aq: Aquaculture At: Atmospheric DWW: Domestic Wastewater For: Forestry HPS: Historically polluted sites HYMO: Hydromorphology Ind: Industry IS: Invasive Species M+Q: Mines and Quarries Peat: Peat Drainage and Extraction UR: Urban Run-Off UWW: Urban Wastewater Was: Waste WT: Water Treatment

Catchment Code	Waterbody (WB) Code	WB Name	WB Type	Local Authority	Protected Area	Status 10-15	Status 13-18	Status 16-21	Environmental Objective	Environmental Objective Date	WFD Risk 16-21	Significant Issue(s)	Significant Pressure(s)	Area for Action (AFA)	AFA (lead, type)	Link to WB page on catchments.ie	Link to WB on EPA Water Map
10, 9	IE_EA_100_0000	Southwestern Irish Sea - Killiney Bay (HA10)	Coastal	Wicklow County Council	BW; SAC; SPA;	High	High	High	High	2021 or earlier	Not at risk					View WB Page	View WB on EPA Water Map
10, 11	IE_EA_140_0000	Southwestern Irish Sea - Brittas Bay (HA 10)	Coastal	Wicklow County Council	BW; SAC;	Unassigned	High	High	Good	2021 or earlier	Not at risk					View WB Page	View WB on EPA Water Map
10, 11, 12, 13	IE_SE_010_0000	Southwestern Irish Sea (HAs 11;12)	Coastal	Wexford County Council	BW; SAC; SPA; NSA;	Good	Moderate	Good	Good	2021 or earlier	Not at risk					View WB Page	View WB on EPA Water Map
10, 12, 14, 9	IE_EA_G_003	Kilcullen	Groundwater	Wicklow County Council	DWPA; SAC	Good	Good	Good	Good	2021 or earlier	At risk	ChemicalQualityDiminution ForSW, Nutrients	Ag, Unknown, For			View WB Page	View WB on EPA Water Map
10	IE_EA_G_036	Kilcoole Gravels	Groundwater	Wicklow County Council	DWPA	Good	Good	Good	Good	2021 or earlier	At risk	Nutrients	Unknown			View WB Page	View WB on EPA Water Map
10	IE_EA_G_038	Enniskerry Gravels	Groundwater	Wicklow County Council	DWPA; SAC	Good	Good	Good	Good	2021 or earlier	Not at risk					View WB Page	View WB on EPA Water Map
10, 11, 12, 9	IE_EA_G_076	Wicklow	Groundwater	Wicklow County Council	DWPA; SAC	Good	Good	Good	Good	2021 or earlier	At risk	Nutrients	Unknown, Ag			View WB Page	View WB on EPA Water Map
10	IE_EA_G_077	Historic Mine (Glendalough)	Groundwater	Wicklow County Council	DWPA; SAC	Poor	Poor	Poor	Good	2022-2027	At risk	Chemical, ChemicalQualityDiminution ForSW	HPS			View WB Page	View WB on EPA Water Map
10	IE_EA_G_079	Historic Mine (Glenmalure)	Groundwater	Wicklow County Council	DWPA; SAC	Poor	Poor	Poor	Good	2022-2027	At risk	Chemical, ChemicalQualityDiminution ForSW	HPS			View WB Page	View WB on EPA Water Map
10	IE_EA_G_080	Historic Mine (Avoca)	Groundwater	Wicklow County Council	DWPA	Poor	Poor	Poor	Poor	Less Stringent Objective Already Achieved	Not at risk					View WB Page	View WB on EPA Water Map
10	IE_EA_G_081	GWDTE-Buckroneys-Brittas Fen (SAC000729)	Groundwater	Wicklow County Council	DWPA; SAC (GWDTE)	Good	Good	Good	Good	2021 or earlier	Not at risk					View WB Page	View WB on EPA Water Map
10	IE_EA_G_084	GWDTE-Buckroneys-Brittas Dunes (SAC000729)	Groundwater	Wicklow County Council	DWPA; SAC (GWDTE)	Good	Good	Good	Good	2021 or earlier	Not at risk					View WB Page	View WB on EPA Water Map
10, 9	IE_EA_G_091	Industrial Facility (P0019-02)	Groundwater	Dun Laoghaire Rathdown County Council	DWPA	Poor	Poor	Poor	Good	2022-2027	At risk	Chemical, ChemicalQualityDiminution ForSW	Ind			View WB Page	View WB on EPA Water Map
10, 11, 12, 13, 14, 9	IE_SE_G_011	Ballyglass	Groundwater	Wicklow County Council	DWPA; SAC	Good	Good	Good	Good	2021 or earlier	At risk	ChemicalQualityDiminution ForSW, Nutrients	Unknown, Ag			View WB Page	View WB on EPA Water Map
10, 11, 12	IE_SE_G_075	Inch	Groundwater	Wexford County Council	DWPA	Good	Good	Good	Good	2021 or earlier	Not at risk					View WB Page	View WB on EPA Water Map
10	IE_EA_10_10	Varty Lower	Lake	Wicklow County Council		Good	Good	Good	Good	2021 or earlier	Not at risk					View WB Page	View WB on EPA Water Map
10	IE_EA_10_11	Vartry Upper	Lake	Wicklow County Council		Unassigned	Good	Good	Good	2021 or earlier	Not at risk					View WB Page	View WB on EPA Water Map
10	IE_EA_10_23	Bray Upper	Lake	Wicklow County Council	SAC;	Unassigned	High	High	Good	2021 or earlier	Not at risk					View WB Page	View WB on EPA Water Map
10	IE_EA_10_25	Tay	Lake	Wicklow County Council	SAC;	Moderate	Moderate	Moderate	Good	2022-2027	At risk	Chemical, OtherSignificantImpacts	Unknown	Avonmore	LAWPRO, Restoration	View WB Page	View WB on EPA Water Map
10	IE_EA_10_27	Nahanagan	Lake	Wicklow County Council	SAC;	Unassigned	High	High	Good	2021 or earlier	Review					View WB Page	View WB on EPA Water Map
10	IE_EA_10_28	Bray Lower	Lake	Wicklow County Council	SAC;	Good	Good	Good	Good	2021 or earlier	Not at risk					View WB Page	View WB on EPA Water Map
10	IE_EA_10_29	Dan	Lake	Wicklow County Council	SAC;	Moderate	Moderate	Good	Good	2021 or earlier	Not at risk			Avonmore	LAWPRO, Restoration	View WB Page	View WB on EPA Water Map
10	IE_EA_10_30	Lower	Lake	Wicklow County Council	SAC;	Unassigned	High	Moderate	Good	2022-2027	Review					View WB Page	View WB on EPA Water Map
10	IE_EA_10_31	Ouler	Lake	Wicklow County Council	SAC;	Unassigned	High	High	Good	2021 or earlier	Review					View WB Page	View WB on EPA Water Map
10	IE_EA_10_32	Upper Glendalough	Lake	Wicklow County Council	SAC;	Moderate	High	Good	Good	2021 or earlier	Not at risk					View WB Page	View WB on EPA Water Map
10	IE_EA_10_5	Sevenchurches	Lake	Wicklow County Council	SAC;	Unassigned	High	High	Good	2021 or earlier	Review					View WB Page	View WB on EPA Water Map
10	IE_EA_10A020200	AUGHRIM (WICKLOW)_010	River	Wicklow County Council		Moderate	Moderate	Moderate	Good	2022-2027	At risk	Nutrients	UR, DWTS	Aughrim (Wicklow)	Wicklow County Council, Restoration	View WB Page	View WB on EPA Water Map
10	IE_EA_10A020400	AUGHRIM (WICKLOW)_020	River	Wicklow County Council	DWPA;	Moderate	Moderate	Good	Good	2021 or earlier	Review			Aughrim (Wicklow)	Wicklow County Council, Restoration	View WB Page	View WB on EPA Water Map
10	IE_EA_10A030700	AVOCA_010	River	Wicklow County Council		Poor	Bad	Poor	Poor	Less Stringent Objective Already Achieved	Not at risk			Avoca	LAWPRO, Restoration	View WB Page	View WB on EPA Water Map
10	IE_EA_10A031050	AVOCA_020	River	Wicklow County Council		Bad	Bad	Moderate	Bad	Less Stringent Objective Already Achieved	Not at risk			Avoca	LAWPRO, Restoration	View WB Page	View WB on EPA Water Map
10	IE_EA_10A031140	AVOCA_030	River	Wicklow County Council		Unassigned	Moderate	Moderate	Moderate	Less Stringent Objective Already Achieved	Not at risk			Avoca	LAWPRO, Restoration	View WB Page	View WB on EPA Water Map
10	IE_EA_10A040100	AVONBEG_010	River	Wicklow County Council	SAC;	Moderate	Good	Good	Good	2021 or earlier	Not at risk			Avonbeg	LAWPRO, Restoration	View WB Page	View WB on EPA Water Map

10	IE_EA_10A040400	AVONBEG_020	River	Wicklow County Council	SAC;	Moderate	Good	Moderate	Good	2022-2027	At risk	Chemical	HPS	Avonbeg	LAWPRO, Restoration	View WB Page	View WB on EPA Water Map
10	IE_EA_10A040600	AVONBEG_030	River	Wicklow County Council	DWPA;	Moderate	Poor	Poor	Good	2022-2027	At risk	Nutrients, Organic	For, UR	Avonbeg	LAWPRO, Restoration	View WB Page	View WB on EPA Water Map
10	IE_EA_10A040800	AVONBEG_040	River	Wicklow County Council	DWPA;	Good	Good	Good	Good	2021 or earlier	Not at risk			Avonbeg	LAWPRO, Restoration	View WB Page	View WB on EPA Water Map
10	IE_EA_10A050010	AVONMORE_010	River	Wicklow County Council	SAC;	Moderate	Good	Moderate	High	2022-2027	At risk	Acidification, Nutrients	DWTS, Unknown	Avonmore	LAWPRO, Restoration	View WB Page	View WB on EPA Water Map
10	IE_EA_10A050020	AVONMORE_020	River	Wicklow County Council	SAC;	Good	Good	Moderate	High	2022-2027	At risk	Acidification, Nutrients	For	Avonmore	LAWPRO, Restoration	View WB Page	View WB on EPA Water Map
10	IE_EA_10A050050	AVONMORE_030	River	Wicklow County Council	SAC;	Good	Good	Good	Good	2021 or earlier	Not at risk			Avonmore	LAWPRO, Restoration	View WB Page	View WB on EPA Water Map
10	IE_EA_10A050100	AVONMORE_040	River	Wicklow County Council	SAC;	Good	High	High	Good	2021 or earlier	Not at risk			Avonmore	LAWPRO, Restoration	View WB Page	View WB on EPA Water Map
10	IE_EA_10A050200	AVONMORE_050	River	Wicklow County Council	SAC;	Good	Good	Good	Good	2021 or earlier	Not at risk			Avonmore	LAWPRO, Restoration	View WB Page	View WB on EPA Water Map
10	IE_EA_10A050300	AVONMORE_060	River	Wicklow County Council	DWPA; SAC;	Good	Good	Good	Good	2021 or earlier	Not at risk			Avonmore	LAWPRO, Restoration	View WB Page	View WB on EPA Water Map
10	IE_EA_10A050500	AVONMORE_070	River	Wicklow County Council		Good	Moderate	Good	Good	2021 or earlier	Not at risk			Avonmore	LAWPRO, Restoration	View WB Page	View WB on EPA Water Map
10	IE_EA_10A060400	ASKANAGAP STREAM_010	River	Wicklow County Council		High	High	High	High	2021 or earlier	Not at risk			Askanagap Stream_Blue Dot	LAWPRO, Protection	View WB Page	View WB on EPA Water Map
10	IE_EA_10B010200	BALLYDUFF STREAM (WICKLOW)_010	River	Wicklow County Council		Poor	Poor	Moderate	Good	2022-2027	At risk	Morphological, Nutrients, Organic	Ag	Avoca	LAWPRO, Restoration	View WB Page	View WB on EPA Water Map
10	IE_EA_10B020400	BALLYCREEN BROOK_010	River	Wicklow County Council		Good	Good	Good	Good	2021 or earlier	Not at risk			Ballycreen Brook	Wicklow County Council, Protection	View WB Page	View WB on EPA Water Map
10	IE_EA_10B020700	BALLYCREEN BROOK_020	River	Wicklow County Council	DWPA;	High	High	High	High	2021 or earlier	Not at risk			Ballycreen Brook_Blue Dot	LAWPRO, Protection	View WB Page	View WB on EPA Water Map
10	IE_EA_10B080500	Ballyronan Stream_010	River	Wicklow County Council	SPA;	Moderate	Moderate	Moderate	Good	2022-2027	At risk	Nutrients	Ind, DWTS	Kilcoole Newcastle and Newtownmountkennedy	LAWPRO, Restoration	View WB Page	View WB on EPA Water Map
10	IE_EA_10B980500	BALLYMACAHARA_010	River	Wicklow County Council		Good	Good	Good	Good	2021 or earlier	Review					View WB Page	View WB on EPA Water Map
10	IE_EA_10C010100	CLOGHOGE BROOK_010	River	Wicklow County Council	SAC;	Moderate	Moderate	Moderate	Good	2022-2027	Review			Avonmore	LAWPRO, Restoration	View WB Page	View WB on EPA Water Map
10	IE_EA_10C020500	COOLALUG STREAM_010	River	Wicklow County Council		Moderate	Good	Good	Good	2021 or earlier	Review			Coolalug Stream	Wicklow County Council, Protection	View WB Page	View WB on EPA Water Map
10	IE_EA_10C040350	CARRICKMINES STREAM_010	River	Dun Laoghaire Rathdown County Council		Moderate	Moderate	Good	Good	2021 or earlier	Not at risk			Carrickmines	LAWPRO, Restoration	View WB Page	View WB on EPA Water Map
10	IE_EA_10D010010	DARGLE_010	River	Wicklow County Council	SAC; Fish;	Good	Good	Good	High	2022-2027	At risk	Hydrological, Morphological	HYMO	Dargle	LAWPRO, Restoration	View WB Page	View WB on EPA Water Map
10	IE_EA_10D010100	DARGLE_020	River	Wicklow County Council	Fish;	Good	Good	High	Good	2021 or earlier	Not at risk			Dargle	LAWPRO, Restoration	View WB Page	View WB on EPA Water Map
10	IE_EA_10D010250	DARGLE_030	River	Wicklow County Council	SAC; Fish;	Poor	Moderate	Good	Good	2021 or earlier	Not at risk			Dargle	LAWPRO, Restoration	View WB Page	View WB on EPA Water Map
10	IE_EA_10D010300	DARGLE_040	River	Dun Laoghaire Rathdown County Council	Fish;	Good	Good	Good	Good	2021 or earlier	Not at risk			Dargle	LAWPRO, Restoration	View WB Page	View WB on EPA Water Map
10	IE_EA_10D020300	DERRY WATER_010	River	Wicklow County Council		Good	Good	Good	Good	2021 or earlier	Not at risk			Derry Water	Wicklow County Council, Protection	View WB Page	View WB on EPA Water Map
10	IE_EA_10D020600	DERRY WATER_020	River	Wicklow County Council		Good	Good	Good	Good	2021 or earlier	Not at risk			Derry Water	Wicklow County Council, Protection	View WB Page	View WB on EPA Water Map
10	IE_EA_10D020800	DERRY WATER_030	River	Wicklow County Council		Good	Good	Good	Good	2021 or earlier	Not at risk					View WB Page	View WB on EPA Water Map
10	IE_EA_10G010200	GLENCREE_010	River	Wicklow County Council	SAC;	Good	Good	Good	Good	2021 or earlier	Not at risk					View WB Page	View WB on EPA Water Map
10	IE_EA_10G020300	GLENCULLEN_010	River	Dun Laoghaire Rathdown County Council	SAC;	Good	High	High	High	2021 or earlier	Not at risk			Glencullen_Blue Dot	LAWPRO, Protection	View WB Page	View WB on EPA Water Map
10	IE_EA_10G020500	GLENCULLEN_020	River	Wicklow County Council	SAC;	Good	Good	Good	Good	2021 or earlier	Not at risk					View WB Page	View WB on EPA Water Map
10	IE_EA_10G030200	GLENMACNASS_010	River	Wicklow County Council	DWPA; SAC;	Moderate	Good	Good	Good	2021 or earlier	Not at risk					View WB Page	View WB on EPA Water Map
10	IE_EA_10G030600	GLENMACNASS_020	River	Wicklow County Council	SAC;	Good	Good	Good	Good	2021 or earlier	Not at risk					View WB Page	View WB on EPA Water Map
10	IE_EA_10G040500	GOLD MINE_010	River	Wicklow County Council		Good	High	Good	Good	2021 or earlier	Not at risk					View WB Page	View WB on EPA Water Map
10	IE_EA_10G050100	GLENEALO_010	River	Wicklow County Council	SAC;	Good	Good	Moderate	Good	2022-2027	At risk	Chemical	HPS	Avonmore	LAWPRO, Restoration	View WB Page	View WB on EPA Water Map
10	IE_EA_10G050400	GLENEALO_020	River	Wicklow County Council	SAC;	Moderate	Moderate	Bad	Good	2022-2027	At risk	Acidification, Chemical	For, HPS	Avonmore	LAWPRO, Restoration	View WB Page	View WB on EPA Water Map
10	IE_EA_10G060200	GLENDASAN_010	River	Wicklow County Council	SAC;	Good	Good	Moderate	Good	2022-2027	At risk	Chemical	HPS	Avonmore	LAWPRO, Restoration	View WB Page	View WB on EPA Water Map
10	IE_EA_10H060930	Haughtons_010	River	Wicklow County Council	SAC;	Unassigned	Moderate	Moderate	Good	2022-2027	Review			Cornagower GWS	NFGWS, Restoration	View WB Page	View WB on EPA Water Map
10	IE_EA_10I020430	Inchanappa_010	River	Wicklow County Council	SAC; SPA;	Unassigned	Good	Good	Good	2021 or earlier	Review					View WB Page	View WB on EPA Water Map
10	IE_EA_10K010580	Kilcoole Stream_010	River	Wicklow County Council	SAC; SPA;	Moderate	Moderate	Poor	Good	2022-2027	At risk	Nutrients, Organic	UWW	Kilcoole Newcastle and Newtownmountkennedy	LAWPRO, Restoration	View WB Page	View WB on EPA Water Map
10	IE_EA_10K020200	KILL OF THE GRANGE STREAM_010	River	Dun Laoghaire Rathdown County Council		Poor	Poor	Poor	Good	2022-2027	At risk	Hydrological, Morphological, Nutrients, Organic	UWW, UR, HYMO	Kill of the Grange	LAWPRO, Restoration	View WB Page	View WB on EPA Water Map
10	IE_EA_10K030600	KILMACANOGE_010	River	Wicklow County Council		Moderate	Moderate	Moderate	Good	2022-2027	At risk	Nutrients, Organic, UnknownImpactType	UR	Dargle	LAWPRO, Restoration	View WB Page	View WB on EPA Water Map
10	IE_EA_10K310720	Kilmurry stream_010	River	Wexford County Council	SAC;	Unassigned	Moderate	Good	Good	2021 or earlier	Review			Avoca	LAWPRO, Restoration	View WB Page	View WB on EPA Water Map

10	IE_EA_10K520710	KILRUDDERY_DEERPARK_010	River	Wicklow County Council	SAC;	Unassigned	Moderate	Good	Good	2021 or earlier	Review			Kilcoole Newcastle and Newtownmountkennedy	LAWPRO, Restoration	View WB Page	View WB on EPA Water Map
10	IE_EA_10K550680	KILPOOLE_LOWER_010	River	Wicklow County Council	SAC;	Unassigned	Unassigned	Good	Good	2021 or earlier	Review					View WB Page	View WB on EPA Water Map
10	IE_EA_10N010600	NEWCASTLE (WICKLOW)_010	River	Wicklow County Council	SAC; SPA;	Good	Moderate	Poor	Good	2022-2027	At risk	Nutrients	Ag, UWW	Kilcoole Newcastle and Newtownmountkennedy	LAWPRO, Restoration	View WB Page	View WB on EPA Water Map
10	IE_EA_10N020150	NEWTOWNMOUNTKENNEDY_010	River	Wicklow County Council	SAC;	High	Good	Good	Good	2021 or earlier	Review			Kilcoole Newcastle and Newtownmountkennedy	LAWPRO, Restoration	View WB Page	View WB on EPA Water Map
10	IE_EA_10N020600	NEWTOWNMOUNTKENNEDY_020	River	Wicklow County Council	SPA;	Poor	Poor	Moderate	Good	2022-2027	At risk	Nutrients, Organic	Unknown	Kilcoole Newcastle and Newtownmountkennedy	LAWPRO, Restoration	View WB Page	View WB on EPA Water Map
10	IE_EA_10O010100	OW_010	River	Wicklow County Council	SAC;	Moderate	Good	Good	Good	2021 or earlier	Not at risk					View WB Page	View WB on EPA Water Map
10	IE_EA_10O010300	OW_020	River	Wicklow County Council	SAC;	Good	Good	Good	Good	2021 or earlier	Not at risk			OW_pH project	LAWPRO, Restoration	View WB Page	View WB on EPA Water Map
10	IE_EA_10O010400	OW_030	River	Wicklow County Council		Good	Good	Good	Good	2021 or earlier	Not at risk					View WB Page	View WB on EPA Water Map
10	IE_EA_10P010300	POTTER'S_010	River	Wicklow County Council	DWPA; SAC;	Moderate	Moderate	Moderate	Good	2022-2027	At risk	Sediment, Morphological, Nutrients, Organic	Ag, For	Potters and Three Mile Water	LAWPRO, Restoration	View WB Page	View WB on EPA Water Map
10	IE_EA_10P010500	POTTER'S_020	River	Wicklow County Council	SAC;	Good	Good	Good	Good	2021 or earlier	Not at risk					View WB Page	View WB on EPA Water Map
10	IE_EA_10R010100	REDCROSS_010	River	Wicklow County Council		Good	Good	Good	Good	2021 or earlier	Not at risk					View WB Page	View WB on EPA Water Map
10	IE_EA_10R010300	REDCROSS_020	River	Wicklow County Council		Good	High	Good	Good	2021 or earlier	Not at risk			Redcross	Wicklow County Council, Restoration	View WB Page	View WB on EPA Water Map
10	IE_EA_10R010600	REDCROSS_030	River	Wicklow County Council	SAC;	Unassigned	Good	Good	Good	2021 or earlier	Review			Redcross	Wicklow County Council, Restoration	View WB Page	View WB on EPA Water Map
10	IE_EA_10R020600	RATHNEW STREAM_010	River	Wicklow County Council	SAC; SPA;	Good	Poor	Good	Good	2021 or earlier	Not at risk			Rathnew	Wicklow County Council, Restoration	View WB Page	View WB on EPA Water Map
10	IE_EA_10S010600	SHANGANAGH_010	River	Dun Laoghaire Rathdown County Council	DWPA;	Good	Moderate	Good	Good	2021 or earlier	Not at risk			Carrickmines	LAWPRO, Restoration	View WB Page	View WB on EPA Water Map
10	IE_EA_10T010300	THREE MILE WATER_010	River	Wicklow County Council		Good	Good	Good	Good	2021 or earlier	Not at risk					View WB Page	View WB on EPA Water Map
10	IE_EA_10T010500	THREE MILE WATER_020	River	Wicklow County Council	SAC;	Moderate	Good	High	Good	2021 or earlier	Review			Potters and Three Mile Water	LAWPRO, Restoration	View WB Page	View WB on EPA Water Map
10	IE_EA_10T030580	THREE TROUTS STREAM_010	River	Wicklow County Council	SAC;	Unassigned	Good	Good	Good	2021 or earlier	Not at risk					View WB Page	View WB on EPA Water Map
10	IE_EA_10T040500	TEMPLERAINY STREAM_010	River	Wicklow County Council		Good	Good	High	Good	2021 or earlier	Not at risk					View WB Page	View WB on EPA Water Map
10	IE_EA_10V010050	VARTRY_010	River	Wicklow County Council	SAC; Fish;	High	Good	High	High	2021 or earlier	Review			Vartry_Blu Dot	LAWPRO, Restoration	View WB Page	View WB on EPA Water Map
10	IE_EA_10V010100	VARTRY_020	River	Wicklow County Council	DWPA; Fish;	Good	Good	Good	Good	2021 or earlier	Not at risk					View WB Page	View WB on EPA Water Map
10	IE_EA_10V010150	VARTRY_030	River	Wicklow County Council	DWPA; Fish;	Good	Good	Good	Good	2021 or earlier	Not at risk					View WB Page	View WB on EPA Water Map
10	IE_EA_10V010300	VARTRY_040	River	Wicklow County Council	SAC; Fish; SPA;	Good	Good	Moderate	Good	2022-2027	Review					View WB Page	View WB on EPA Water Map
10	IE_EA_10W080880	Wicklow_010	River	Wicklow County Council	SPA;	Unassigned	Unassigned	Good	Good	2021 or earlier	Review					View WB Page	View WB on EPA Water Map
10	IE_EA_110_0100	Dargle Estuary	Transitional	Wicklow County Council	Fish;	Unassigned	Moderate	Moderate	Good	2022-2027	Review					View WB Page	View WB on EPA Water Map
10	IE_EA_120_0100	Kilcoole Marsh	Transitional	Wicklow County Council	SAC; SPA;	Unassigned	Moderate	Moderate	Good	2022-2027	Review					View WB Page	View WB on EPA Water Map
10	IE_EA_130_0100	Broad Lough	Transitional	Wicklow County Council	SAC; SPA;	Moderate	Moderate	Moderate	Good	2022-2027	At risk	Nutrients, Organic	UR, Ag			View WB Page	View WB on EPA Water Map
10	IE_EA_150_0100	Avoca Estuary	Transitional	Wicklow County Council		Moderate	Moderate	Moderate	Good	2022-2027	At risk	Chemical	HPS			View WB Page	View WB on EPA Water Map