



**Cycle 3**

**HA 09 Liffey and Dublin Bay Catchment  
Report, May 2024**

## Introduction

## Water Quality Summary

## High Status Objectives

## Water Quality Changes

## WFD Risk

## Significant Pressures

## Action

## Summary Information

# Introduction

This report provides an overview of the water quality in the Liffey and Dublin Bay Catchment, and the pressures impacting on water quality. This report is based on data up to 2021. The latest water quality data, dashboards and maps throughout this report are available on [catchments.ie](https://catchments.ie) and [EPA Water Map](https://www.epa.ie/maps).

The Liffey and Dublin Bay Catchment includes the area drained by the River Liffey and by all streams entering tidal water between Sea Mount and Sorrento Point, Co. Dublin, draining a total area of 1,616km<sup>2</sup>. The largest urban centre in the catchment is Dublin City. The other main urban centres are Dun Laoghaire, Lucan, Clonee, Dunboyne, Leixlip, Maynooth, Kilcock, Celbridge, Newcastle, Rathcoole, Clane, Kill, Sallins, Johnstown, Naas, Newbridge, Athgarvan, Kilcullen and Blessington.

The Liffey and Dublin Bay catchment is divided into 17 subcatchments with 81 river waterbodies, six lake waterbodies, six transitional waterbodies, five coastal waterbodies and 29 groundwater bodies.

[View the Liffey and Dublin Bay Catchment on the EPA Water Map](https://www.epa.ie/maps)

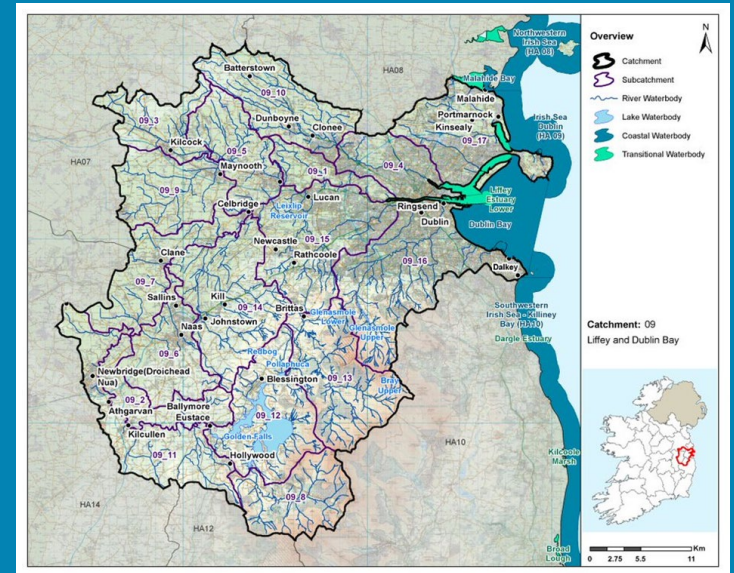
## Previous Catchment Assessments

Previous catchment assessments, which provide additional historic context and information, are archived on [catchments.ie](https://catchments.ie):

- [Cycle 2 Catchment Assessments](#) – published September 2018
- [Cycle 3 Draft Catchment Assessments](#) – published September 2021

## Online Dashboards

Links to online dashboards are provided in this report – these numbers may vary from those in this document as time progress and the online dashboards are updated based on the latest data and scientific assessments.



Overview of Subcatchments in the Liffey and Dublin Bay Catchment

# Water Quality Summary

Introduction

Water Quality Summary

High Status Objectives

Water Quality Changes

WFD Risk

Significant Pressures

Action

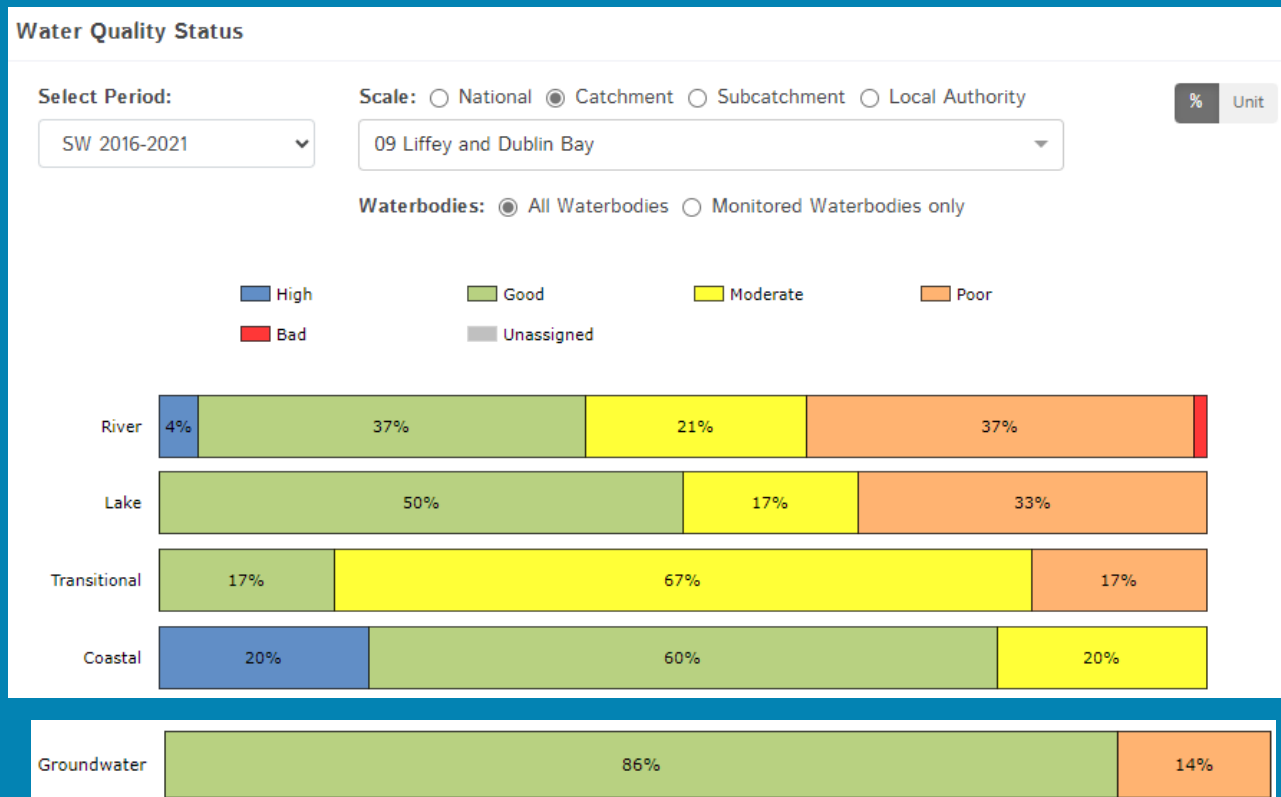
Summary Information

The dashboard below provides a breakdown of water quality status for surface and groundwater bodies in the Liffey and Dublin Bay Catchment.

A total of 42% of surface waterbodies were at Good or High Ecological Status in the 2016-2021 monitoring period. Eighty-six percent of groundwater bodies were at Good status.

**Go to EPA Water Maps for WFD Status**

[EPA Water Map](#)



Water quality status 2016-2021 for the Liffey and Dublin Bay Catchment. Note canals are also included under the river category.

**View Online Dashboard:** <https://www.catchments.ie/data/#/dashboard/waterquality>

# High Status Objective Waterbodies

Introduction

High status waters are prioritised for protection and action.

There are four waterbodies with a **High Ecological Status Objective (HSO)** in the Liffey and Dublin Bay Catchment, with three currently not meeting their environmental objective of High.

Water Quality Summary

Grants for septic tank upgrades may be available in high status objective catchment areas - you can learn more and check your Eircode for eligibility here: <https://www.gov.ie/en/publication/6cc1e-domestic-waste-water-treatment-systems-septic-tanks>

[View HSO river waterbodies in this catchment.](#)

See *Status and Risk / High Status Objective* for other waterbody types.

High Status Objectives

Water Quality Changes

## Water Quality Status - High Status Objective Waterbodies

Select Type:

All Surface Waters

Scale:  Catchment  Local Authority

09 Liffey and Dublin Bay

	SW 2007-2009	SW 2010-2012	SW 2010-2015	SW 2013-2018	SW 2016-2021
COCK BROOK_010 (River)	Moderate	High	Good	Good	Good
LEMONSTOWN STREAM_010 (River)	High	High	Good	Good	Good
Northwestern Irish Sea (HA 08) (Coastal)	High	High	Good	High	Good
Southwestern Irish Sea - Killiney Bay (HA10) (Coastal)	High	Good	High	High	High

WFD Risk

Significant Pressures

*Water quality status for High Ecological Status Objective waterbodies.*

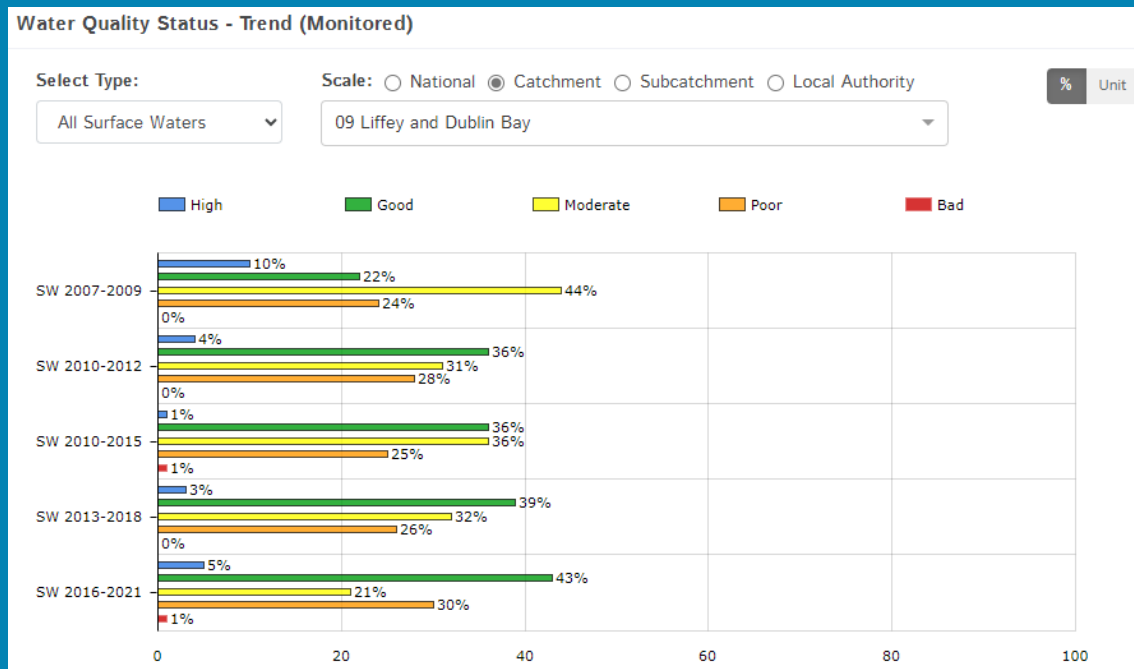
**View Online Dashboard:** <https://www.catchments.ie/data/#/dashboard/waterquality>

Action

Summary Information

# Water Quality Changes

Below illustrates the changes in ecological status in monitored surface waterbodies over the last five monitoring cycles in the Liffey and Dublin Bay Catchment. Nationally while there have been improvements in some waterbodies, these have been offset by declines elsewhere.



Ecological status trends for monitored surface waterbodies over the last five monitoring cycles in the Liffey and Dublin Bay Catchment.

View online dashboard: <https://www.catchments.ie/data/#/dashboard/waterquality>

A total of 63 (50%) waterbodies are currently meeting their environmental objective of Good or High Ecological Status, and Good Ecological Potential for canals.

	Total	Achieving Environmental Objectives (2016-2021)	High Status Environmental Objectives Waterbodies	Achieving High Status Environmental Objectives (2016-2021)
<b>Rivers</b>	77	27 (35%)	2	0 (0%)
<b>Canals</b>	4	4 (100%)	0	0 (0%)
<b>Lakes</b>	6	3 (50%)	0	0 (0%)
<b>Transitional</b>	6	1 (17%)	0	0 (0%)
<b>Coastal</b>	5	3 (60%)	2	1 (50%)
<b>Groundwater</b>	29	25 (86%)	0	0 (0%)

Introduction

Water Quality Summary

High Status Objectives

Water Quality Changes

WFD Risk

Significant Pressures

Action

Summary Information

# WFD Risk

Introduction

Water Quality Summary

High Status Objectives

Water Quality Changes

WFD Risk

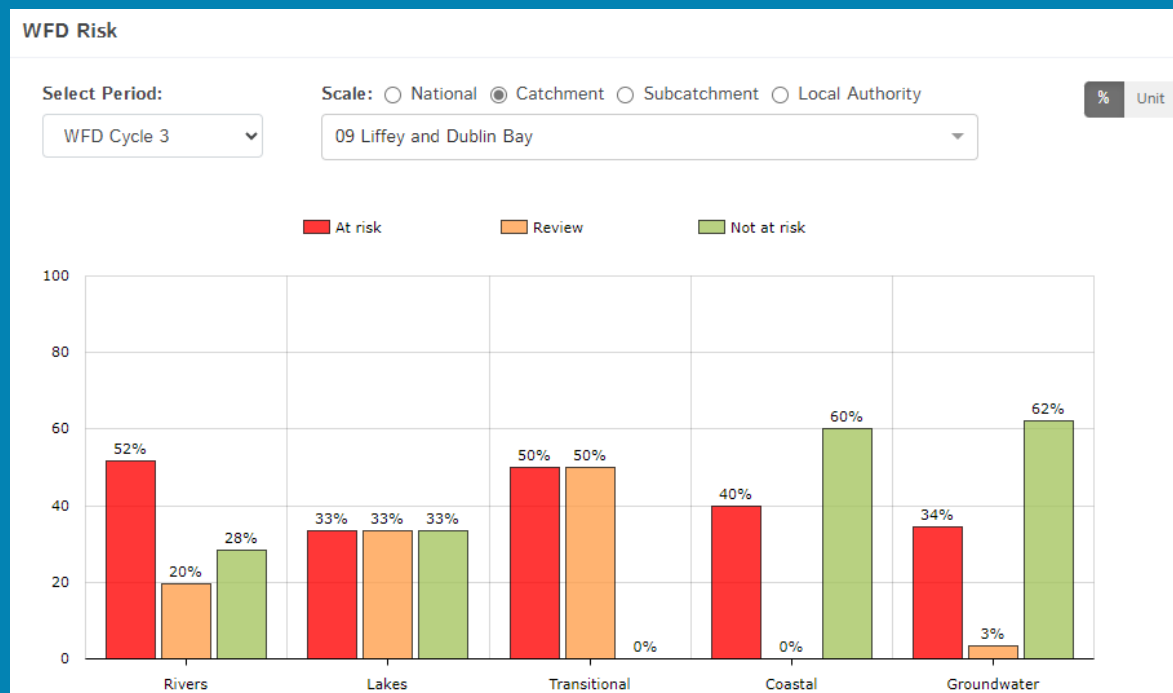
Significant Pressures

Action

Summary Information

A total of 59 (47%) waterbodies are *At Risk* of not meeting their environmental objective in the Liffey and Dublin Bay Catchment, while 22 (17%) are under *Review* and 46 (36%) are *Not At Risk*.

Go to [EPA Water Map](#) to see *WFD Risk for this catchment*



WFD Risk for the Liffey and Dublin Bay Catchment based on 2016-2021 data.

View [Online Dashboard](https://www.catchments.ie/data/#/dashboard/waterquality): <https://www.catchments.ie/data/#/dashboard/waterquality>

There are currently eight heavily modified waterbodies (HMWBs) in the Liffey and Dublin Bay Catchment: Broadmeadow Water (*At Risk*), Golden Falls (*At Risk*), Glenasmole Lower (*At Risk*), Leixlip Reservoir (*Review*), Glenasmole Upper (*Not at Risk*), Pollaphuca (*Not at Risk*), Liffey Estuary Lower (*At Risk*) and SANTRY\_020 (*At Risk*).

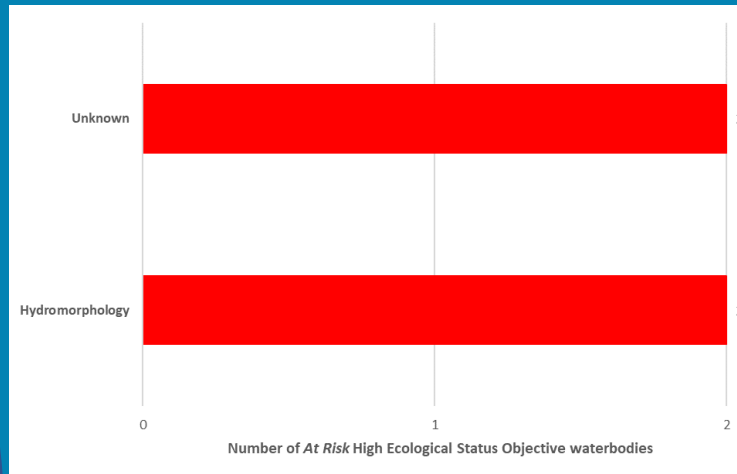
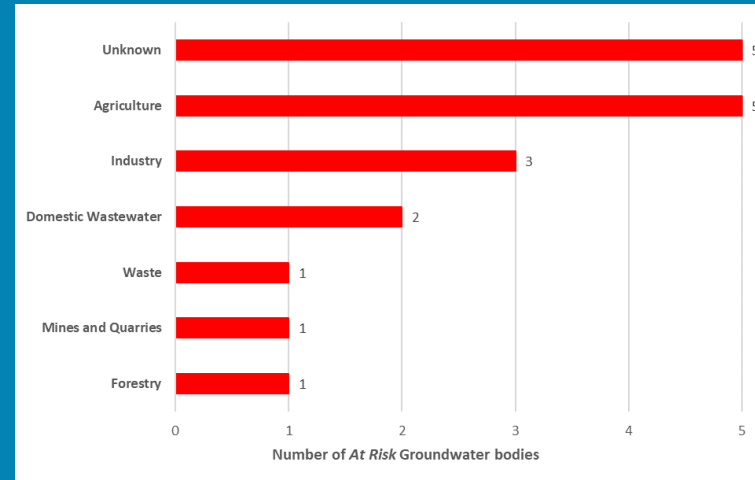
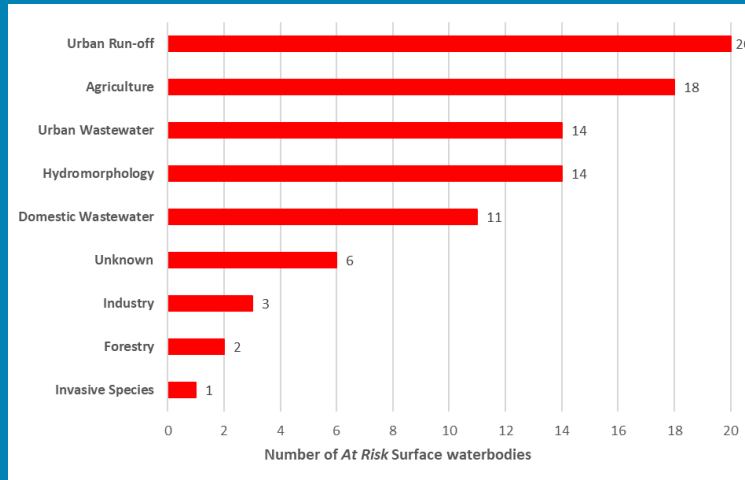
There are four artificial waterbodies in the Liffey and Dublin Bay Catchment: Grand Canal Basin (Liffey and Dublin Bay) (*Not at Risk*), Grand Canal Main Line (Liffey and Dublin Bay) (*Not at Risk*), Grand Canal Naas Line (Liffey and Dublin Bay) (*Review*) and Royal Canal Main Line (Liffey and Dublin Bay) (*Review*).

The [EPA's characterisation outcome report](#) has more information on WFD Risk

Click [here](#) for more information on significant pressures

## Significant Pressures driving risk

Significant pressure types impacting the 49 *At Risk* surface waterbodies and ten groundwater bodies are broken down in the figures below, including significant pressure information for the three *At Risk* High Ecological Status Objective waterbodies.



The issues driven by these pressures are mainly nutrient pollution, organic pollution and altered morphological condition (habitat) impacts for surface water, and chemical quality diminution for surface water, nutrient pollution and chemical pollution for groundwaters. For more information, see <https://www.catchments.ie/data/#/dashboard/pressure?k=i351zs>.

*Go to the Summary Information section to get significant pressure and issue data for At Risk waterbodies within the Liffey and Dublin Bay Catchment.*

Introduction

Water Quality Summary

High Status Objectives

Water Quality Changes

WFD Risk

Significant Pressures

Action

Summary Information

Introduction

Water Quality  
Summary

High Status  
Objectives

Water Quality  
Changes

WFD Risk

Significant  
Pressures


Action

Summary  
Information

## Significant Pressures

Agriculture is the top significant pressure impacting 39% of the 59 *At Risk* waterbodies within the Liffey and Dublin Bay Catchment, followed by 34% impacted by urban run-off and 24% by hydromorphological pressures.

River Waterbody

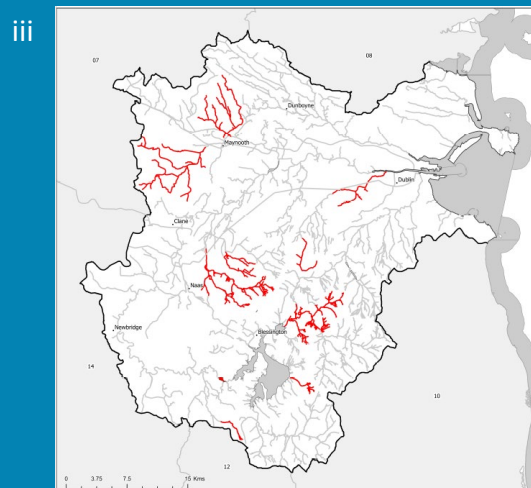
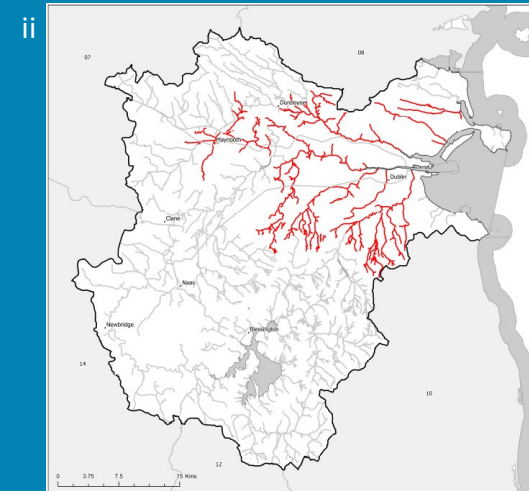
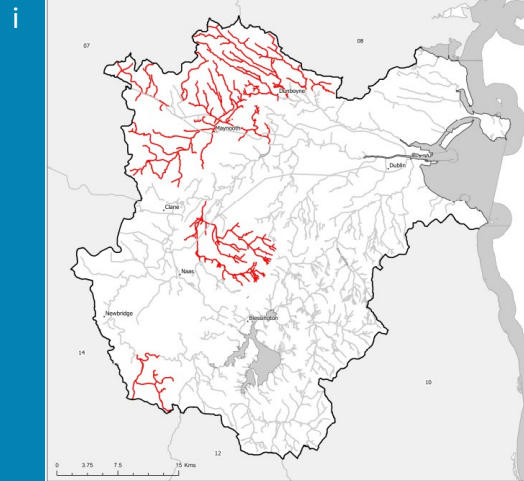
 Significant Pressure in Waterbody At Risk

 Other Waterbodies

Lake, Coastal and  
Transitional Waterbody

 Significant Pressure in Waterbody At Risk

 Other Waterbodies



**The catchments.ie dashboards will show all significant pressures identified for this catchment.**

[www.catchments.ie/data/#/dashboard/pressure](http://www.catchments.ie/data/#/dashboard/pressure)

**Go to the [EPA Water Maps](#) for the locations of all significant pressure types identified for this catchment**

*Locations of At Risk surface waterbodies impacted by i) Agriculture, ii) Urban Run-off and iii) Hydromorphological Pressures.*

Introduction

Water Quality  
Summary

High Status  
Objectives

Water Quality  
Changes

WFD Risk

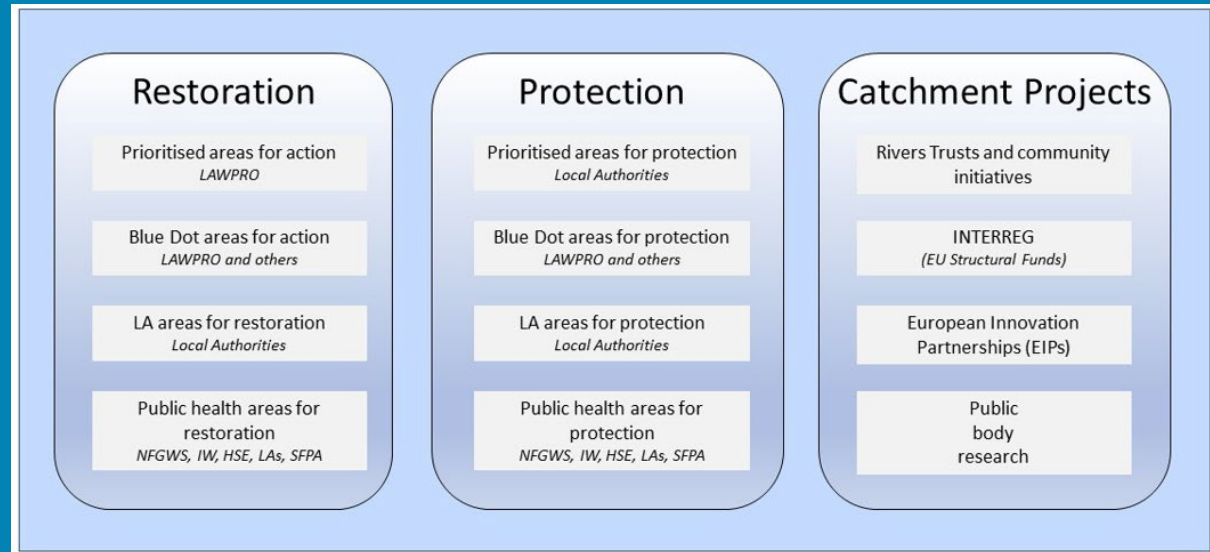
Significant  
Pressures

Action

Summary  
Information

## Priority Areas for Action

A number of waterbodies have been prioritised through the selection of Areas for Action. There were six Priority Areas for Action identified for the second river basin management planning cycle in the Liffey and Dublin Bay Catchment. This has increased to a total of 17 Areas for Restoration, two Areas for Protection and three Catchment Projects for the third cycle. ***Go to the summary information section to get Area for Action information for waterbodies within the Liffey and Dublin Bay Catchment.***



*Types of Areas for Action under the third cycle River Basin Management Plan*

- View the current progress of Areas for Action and Summary Reports completed by LAWPRO, on [catchments.ie](http://catchments.ie) and the EPA Water Map:
  - <https://www.catchments.ie/data/#/areaforaction>
  - [https://gis.epa.ie/EPAMaps/default?easting=?&northing=?&lid=EPA:WFD\\_AreasForAction](https://gis.epa.ie/EPAMaps/default?easting=?&northing=?&lid=EPA:WFD_AreasForAction)
- LAWPRO have also published detailed desktop studies on Prioritised Areas for Action (PAAs) which are available their website: <https://lawaters.ie/desktop-studies/>
- Information on Areas for Action for the second cycle is available in Cycle 2 Catchment Assessments which have been archived on [catchments.ie](http://catchments.ie):  
<https://www.catchments.ie/download/cycle-2-catchment-assessments-published-september-2018/>

Introduction

Water Quality  
Summary

High Status  
Objectives

Water Quality  
Changes

WFD Risk

Significant  
Pressures

Action

Summary  
Information

## Summary information for all waterbodies in the Liffey and Dublin Bay Catchment

The next page provides a table with a breakdown of key information for all waterbodies in this catchment. The key is provided below. Additional information for each waterbody is available on <https://www.catchments.ie/data>, including a breakdown of status, a monitoring schedule for monitored waterbodies and downloadable chemistry results, where available.

<b>Protected Area categories</b>	BW: Bathing Water DW: Drinking Water Fish: Salmonid Waters NSA: Nutrient Sensitive Areas SAC: Special Area of Conservation, Natura 2000 (water dependent habitats and species) SF: Shellfish Area SPA: Special Area of Protection, Natura 2000 (water dependent habitat and species)
<b>Significant pressure* types categories</b>  <i>* For At Risk waterbodies only</i>	Ab: Abstractions Ag: Agriculture Aq: Aquaculture At: Atmospheric DWW: Domestic Wastewater For: Forestry HPS: Historically polluted sites HYMO: Hydromorphology Ind: Industry IS: Invasive Species M+Q: Mines and Quarries Peat: Peat Drainage and Extraction UR: Urban Run-Off UWW: Urban Wastewater Was: Waste WT: Water Treatment

Catchment Code	Waterbody (WB) Code	WB Name	WB Type	Local Authority	Protected Area	Status 10-15	Status 13-18	Status 16-21	Environmental Objective	Environmental Objective Date	WFD Risk 16-21	Significant Issue(s)	Significant Pressure(s)	Area for Action (AFA)	AFA (lead, type)	Link to WB page on catchments.ie	Link to WB on EPA Water Map
9	IE_09_AWB_GCB	Grand Canal Basin (Liffey and Dublin Bay)	Canal	Dublin City Council		Good	Moderate	Good	Good	2021 or earlier	Not at risk					<a href="#">View WB Page</a>	<a href="#">View WB on EPA Water Map</a>
9	IE_09_AWB_GCMLE	Grand Canal Main Line (Liffey and Dublin Bay)	Canal	Kildare County Council	NSA;	Good	Good	Good	Good	2021 or earlier	Not at risk					<a href="#">View WB Page</a>	<a href="#">View WB on EPA Water Map</a>
9	IE_09_AWB_GCNL	Grand Canal Naas Line (Liffey and Dublin Bay)	Canal	Kildare County Council		Good	Good	Good	Good	2021 or earlier	Review					<a href="#">View WB Page</a>	<a href="#">View WB on EPA Water Map</a>
9	IE_09_AWB_RCMLE	Royal Canal Main Line (Liffey and Dublin Bay)	Canal	Kildare County Council		Good	Good	Good	Good	2021 or earlier	Review					<a href="#">View WB Page</a>	<a href="#">View WB on EPA Water Map</a>
7, 8, 9	IE_EA_020_0000	Northwestern Irish Sea (HA 08)	Coastal	Fingal County Council	BW; SAC; SPA; SF;	Good	High	Good	High	2022-2027	At risk	UnknownImpactType	Unknown			<a href="#">View WB Page</a>	<a href="#">View WB on EPA Water Map</a>
8, 9	IE_EA_060_0000	Malahide Bay	Coastal	Fingal County Council	SAC; SPA; NSA;	Moderate	Moderate	Moderate	Good	2022-2027	At risk	Nutrients, Organic	UWW			<a href="#">View WB Page</a>	<a href="#">View WB on EPA Water Map</a>
9	IE_EA_070_0000	Irish Sea Dublin (HA 09)	Coastal	Fingal County Council	BW; SAC; SPA; SF;	Unassigned	Good	Good	Good	2021 or earlier	Not at risk					<a href="#">View WB Page</a>	<a href="#">View WB on EPA Water Map</a>
9	IE_EA_090_0000	Dublin Bay	Coastal	Dublin City Council	BW; SAC; SPA; NSA;	Good	Good	Good	Good	2021 or earlier	Not at risk					<a href="#">View WB Page</a>	<a href="#">View WB on EPA Water Map</a>
10, 9	IE_EA_100_0000	Southwestern Irish Sea - Killiney Bay (HA10)	Coastal	Wicklow County Council	BW; SAC; SPA;	High	High	High	High	2021 or earlier	Not at risk					<a href="#">View WB Page</a>	<a href="#">View WB on EPA Water Map</a>
14, 7, 8, 9	IE_EA_G_002	Trim	Groundwater	Meath County Council	DWPA; SAC	Good	Good	Good	Good	2021 or earlier	At risk	ChemicalQualityDiminution ForSW, Nutrients	DWTS, Unknown, Ag			<a href="#">View WB Page</a>	<a href="#">View WB on EPA Water Map</a>
10, 12, 14, 9	IE_EA_G_003	Kilcullen	Groundwater	Wicklow County Council	DWPA; SAC	Good	Good	Good	Good	2021 or earlier	At risk	ChemicalQualityDiminution ForSW, Nutrients	Ag, Unknown, For			<a href="#">View WB Page</a>	<a href="#">View WB on EPA Water Map</a>
14, 7, 8, 9	IE_EA_G_008	Dublin	Groundwater	South Dublin County Council	DWPA; SAC	Good	Good	Good	Good	2021 or earlier	Review					<a href="#">View WB Page</a>	<a href="#">View WB on EPA Water Map</a>
8, 9	IE_EA_G_011	Swords	Groundwater	Fingal County Council	DWPA; SAC	Good	Good	Good	Good	2021 or earlier	Not at risk					<a href="#">View WB Page</a>	<a href="#">View WB on EPA Water Map</a>
7, 8, 9	IE_EA_G_014	Lusk-Bog of the Ring	Groundwater	Fingal County Council	DWPA	Good	Good	Good	Good	2021 or earlier	At risk	Chemical, ChemicalQualityDiminution ForSW, Nutrients	Ag, Unknown, DWTS			<a href="#">View WB Page</a>	<a href="#">View WB on EPA Water Map</a>
14, 9	IE_EA_G_017	Curragh Gravels East	Groundwater	Kildare County Council	DWPA; SAC	Good	Good	Good	Good	2021 or earlier	Not at risk					<a href="#">View WB Page</a>	<a href="#">View WB on EPA Water Map</a>
7, 9	IE_EA_G_019	Moynalvy	Groundwater	Meath County Council	DWPA	Good	Good	Good	Good	2021 or earlier	Not at risk					<a href="#">View WB Page</a>	<a href="#">View WB on EPA Water Map</a>
9	IE_EA_G_027	Naas	Groundwater	Kildare County Council	DWPA	Good	Good	Good	Good	2021 or earlier	Not at risk					<a href="#">View WB Page</a>	<a href="#">View WB on EPA Water Map</a>
7, 8, 9	IE_EA_G_031	Dunshaughlin	Groundwater	Meath County Council	DWPA	Good	Good	Good	Good	2021 or earlier	Not at risk					<a href="#">View WB Page</a>	<a href="#">View WB on EPA Water Map</a>
12, 14, 9	IE_EA_G_046	Gormanstown Gravels	Groundwater	Wicklow County Council	DWPA	Good	Good	Good	Good	2021 or earlier	Not at risk					<a href="#">View WB Page</a>	<a href="#">View WB on EPA Water Map</a>
9	IE_EA_G_047	Blessington Gravels	Groundwater	Wicklow County Council	DWPA	Good	Good	Good	Good	2021 or earlier	Not at risk					<a href="#">View WB Page</a>	<a href="#">View WB on EPA Water Map</a>
10, 11, 12, 9	IE_EA_G_076	Wicklow	Groundwater	Wicklow County Council	DWPA; SAC	Good	Good	Good	Good	2021 or earlier	At risk	Nutrients	Unknown, Ag			<a href="#">View WB Page</a>	<a href="#">View WB on EPA Water Map</a>
9	IE_EA_G_078	Industrial Facility (P0325-01)	Groundwater	Kildare County Council	DWPA	Poor	Poor	Poor	Good	2022-2027	At risk	Chemical, ChemicalQualityDiminution ForSW	Ind			<a href="#">View WB Page</a>	<a href="#">View WB on EPA Water Map</a>
9	IE_EA_G_082	West Blessington Gravels	Groundwater	Kildare County Council	DWPA	Good	Good	Good	Good	2021 or earlier	Not at risk					<a href="#">View WB Page</a>	<a href="#">View WB on EPA Water Map</a>
9	IE_EA_G_085	GWDTE-Red Bog of Kildare (SAC000397)	Groundwater	Wicklow County Council	DWPA; SAC (GWDTE)	Good	Good	Good	Good	2021 or earlier	At risk	ChemicalQualityDiminution ForSW, Nutrients	M+Q			<a href="#">View WB Page</a>	<a href="#">View WB on EPA Water Map</a>
9	IE_EA_G_086	Industrial Facility (P0480-02)	Groundwater	Fingal County Council	DWPA	Poor	Poor	Poor	Good	2022-2027	At risk	Chemical, ChemicalQualityDiminution ForSW	Ind			<a href="#">View WB Page</a>	<a href="#">View WB on EPA Water Map</a>
9	IE_EA_G_087	Waste Facility (W0014-01)	Groundwater	Kildare County Council	DWPA	Poor	Poor	Poor	Good	2022-2027	At risk	ChemicalQualityDiminution ForSW, Nutrients	Was			<a href="#">View WB Page</a>	<a href="#">View WB on EPA Water Map</a>
9	IE_EA_G_089	Historic Waste Facility (S22-02779)	Groundwater	South Dublin County Council	DWPA	Good	Good	Good	Good	2021 or earlier	Not at risk					<a href="#">View WB Page</a>	<a href="#">View WB on EPA Water Map</a>
10, 9	IE_EA_G_091	Industrial Facility (P0019-02)	Groundwater	Dun Laoghaire Rathdown County Council	DWPA	Poor	Poor	Poor	Good	2022-2027	At risk	Chemical, ChemicalQualityDiminution ForSW	Ind			<a href="#">View WB Page</a>	<a href="#">View WB on EPA Water Map</a>
9	IE_EA_G_092	Historic Waste Facility (S22-02168)	Groundwater	South Dublin County Council	DWPA	Good	Good	Good	Good	2021 or earlier	Not at risk					<a href="#">View WB Page</a>	<a href="#">View WB on EPA Water Map</a>
9	IE_EA_G_093	Historic Waste Facility (S22-02748)	Groundwater	South Dublin County Council	DWPA	Good	Good	Good	Good	2021 or earlier	Not at risk					<a href="#">View WB Page</a>	<a href="#">View WB on EPA Water Map</a>
7, 9	IE_EA_G_095	Summerhills Gravels	Groundwater	Meath County Council	DWPA	Good	Good	Good	Good	2021 or earlier	Not at risk					<a href="#">View WB Page</a>	<a href="#">View WB on EPA Water Map</a>
10, 11, 12, 13, 14, 9	IE_SE_G_011	Ballyglass	Groundwater	Wicklow County Council	DWPA; SAC	Good	Good	Good	Good	2021 or earlier	At risk	ChemicalQualityDiminution ForSW, Nutrients	Unknown, Ag			<a href="#">View WB Page</a>	<a href="#">View WB on EPA Water Map</a>
14, 7, 9	IE_SE_G_077	Kildare	Groundwater	Kildare County Council	DWPA; SAC	Good	Good	Good	Good	2021 or earlier	Not at risk					<a href="#">View WB Page</a>	<a href="#">View WB on EPA Water Map</a>
14, 9	IE_SE_G_106	GWDTE-Pollardstown Fen (SAC000396)	Groundwater	Kildare County Council	DWPA; SAC (GWDTE)	Good	Good	Good	Good	2021 or earlier	Not at risk					<a href="#">View WB Page</a>	<a href="#">View WB on EPA Water Map</a>
14, 9	IE_SE_G_133	Curragh Gravels West	Groundwater	Kildare County Council	DWPA; SAC	Good	Good	Good	Good	2021 or earlier	Not at risk					<a href="#">View WB Page</a>	<a href="#">View WB on EPA Water Map</a>
12, 13, 14, 15, 9	IE_SE_G_152	New Ross	Groundwater	Carlow County Council	DWPA; SAC	Good	Good	Good	Good	2021 or earlier	Not at risk					<a href="#">View WB Page</a>	<a href="#">View WB on EPA Water Map</a>
14, 9	IE_SE_G_167	Usk Gravels	Groundwater	Kildare County Council	DWPA	Good	Good	Good	Good	2021 or earlier	Not at risk					<a href="#">View WB Page</a>	<a href="#">View WB on EPA Water Map</a>

14, 9	IE_SE_G_177	Historic Waste Facility (S22-02443)	Groundwater	Kildare County Council	DWPA	Good	Good	Good	Good	2021 or earlier	Not at risk					<a href="#">View WB Page</a>	<a href="#">View WB on EPA Water Map</a>
9	IE_EA_09_130	Redbog	Lake	Kildare County Council	SAC;	Unassigned	Good	Good	Good	2021 or earlier	Review					<a href="#">View WB Page</a>	<a href="#">View WB on EPA Water Map</a>
9	IE_EA_09_53	Golden Falls	Lake	Kildare County Council		Unassigned	Good	Moderate	Good	2022-2027	At risk	Hydrological, Nutrients	UWW, HYMO	Ballymore Eustace	LAWPRO, Restoration	<a href="#">View WB Page</a>	<a href="#">View WB on EPA Water Map</a>
9	IE_EA_09_68	Glenasmole Lower	Lake	South Dublin County Council	SAC;	Good	Good	Poor	Good	2022-2027	At risk	ElevatedTemperature, UnknownImpactType	Unknown			<a href="#">View WB Page</a>	<a href="#">View WB on EPA Water Map</a>
9	IE_EA_09_69	Leixlip Reservoir	Lake	Kildare County Council	NSA;	Unassigned	Unassigned	Poor	Good	2022-2027	Review					<a href="#">View WB Page</a>	<a href="#">View WB on EPA Water Map</a>
9	IE_EA_09_70	Glenasmole Upper	Lake	South Dublin County Council	SAC;	Good	Good	Good	Good	2021 or earlier	Not at risk					<a href="#">View WB Page</a>	<a href="#">View WB on EPA Water Map</a>
9	IE_EA_09_71	Pollaphuca	Lake	Wicklow County Council	SPA;	Moderate	Good	Good	Good	2021 or earlier	Not at risk					<a href="#">View WB Page</a>	<a href="#">View WB on EPA Water Map</a>
9	IE_EA_08G080700	GAYBROOK_010	River	Fingal County Council	SAC; SPA; NSA;	Unassigned	Poor	Poor	Good	2022-2027	Review					<a href="#">View WB Page</a>	<a href="#">View WB on EPA Water Map</a>
9	IE_EA_09A020300	AWILLYNISH STREAM_010	River	Kildare County Council		Unassigned	Unassigned	Moderate	Good	2022-2027	Review					<a href="#">View WB Page</a>	<a href="#">View WB on EPA Water Map</a>
9	IE_EA_09B020300	BRITTAS_010	River	South Dublin County Council		Moderate	Good	Good	Good	2021 or earlier	Not at risk			Brittas South Dublin	South Dublin County Council, Protection	<a href="#">View WB Page</a>	<a href="#">View WB on EPA Water Map</a>
9	IE_EA_09B020500	BRITTAS_020	River	Wicklow County Council		Moderate	Moderate	Good	Good	2021 or earlier	Not at risk			Brittas Wicklow	Wicklow County Council, Restoration	<a href="#">View WB Page</a>	<a href="#">View WB on EPA Water Map</a>
9	IE_EA_09B030100	BALLYDONNELL BROOK_010	River	Wicklow County Council	SAC;	Good	Moderate	Good	Good	2021 or earlier	Not at risk			Liffey Upper	LAWPRO, Restoration	<a href="#">View WB Page</a>	<a href="#">View WB on EPA Water Map</a>
9	IE_EA_09B040100	BALLYLOW BROOK_010	River	Wicklow County Council	SAC;	Moderate	Moderate	Moderate	Good	2022-2027	At risk	Acidification	For	Liffey Upper	LAWPRO, Restoration	<a href="#">View WB Page</a>	<a href="#">View WB on EPA Water Map</a>
9	IE_EA_09B080200	BALLINAGEE_010	River	Wicklow County Council	SAC;	Good	Good	Good	Good	2021 or earlier	Not at risk			Liffey Upper	LAWPRO, Restoration	<a href="#">View WB Page</a>	<a href="#">View WB on EPA Water Map</a>
9	IE_EA_09B130400	BREWERY STREAM_010	River	Dun Laoghaire Rathdown County Council	SAC; SPA;	Unassigned	Moderate	Poor	Good	2022-2027	Review			Elm Park Stream	Dun Laoghaire Rathdown County Council and Dublin City Council, Restoration	<a href="#">View WB Page</a>	<a href="#">View WB on EPA Water Map</a>
9	IE_EA_09C020100	CAMAC_010	River	South Dublin County Council		Good	Good	Poor	Good	2022-2027	At risk	Morphological	HYMO, IS			<a href="#">View WB Page</a>	<a href="#">View WB on EPA Water Map</a>
9	IE_EA_09C020250	CAMAC_020	River	South Dublin County Council		Moderate	Moderate	Moderate	Good	2022-2027	At risk	Nutrients, Organic	UR			<a href="#">View WB Page</a>	<a href="#">View WB on EPA Water Map</a>
9	IE_EA_09C020310	CAMAC_030	River	South Dublin County Council		Poor	Poor	Poor	Good	2022-2027	At risk	Nutrients, Organic, UnknownImpactType	UR, Ind			<a href="#">View WB Page</a>	<a href="#">View WB on EPA Water Map</a>
9	IE_EA_09C020500	CAMAC_040	River	South Dublin County Council	NSA;	Poor	Poor	Poor	Good	2022-2027	At risk	Morphological, Nutrients, Organic	HYMO, UR, UWW			<a href="#">View WB Page</a>	<a href="#">View WB on EPA Water Map</a>
9	IE_EA_09C030300	CLONSHANBO_010	River	Kildare County Council		Poor	Poor	Poor	Good	2022-2027	At risk	Sediment, Morphological, Nutrients, Organic	HYMO, DWTS, Ag	Clonshanbo - Lyreen	LAWPRO, Restoration	<a href="#">View WB Page</a>	<a href="#">View WB on EPA Water Map</a>
9	IE_EA_09C030600	CLONSHANBO_020	River	Kildare County Council		Poor	Poor	Poor	Good	2022-2027	At risk	Morphological, Nutrients, Organic, UnknownImpactType	DWTS, Unknown, HYMO, Ag	Clonshanbo - Lyreen	LAWPRO, Restoration	<a href="#">View WB Page</a>	<a href="#">View WB on EPA Water Map</a>
9	IE_EA_09C040100	COCK BROOK_010	River	Wicklow County Council	SAC;	Good	Good	Good	High	2022-2027	At risk	Acidification, Hydrological, Morphological	Unknown, HYMO	Ballymore Eustace	LAWPRO, Restoration	<a href="#">View WB Page</a>	<a href="#">View WB on EPA Water Map</a>
9	IE_EA_09C500830	Castletown (Dublin-Kildare)_010	River	South Dublin County Council		Unassigned	Good	Poor	Good	2022-2027	Review					<a href="#">View WB Page</a>	<a href="#">View WB on EPA Water Map</a>
9	IE_EA_09D010010	DODDER_010	River	South Dublin County Council	SAC;	Good	Good	High	Good	2021 or earlier	Not at risk					<a href="#">View WB Page</a>	<a href="#">View WB on EPA Water Map</a>
9	IE_EA_09D010100	DODDER_020	River	South Dublin County Council	DWPA; SAC;	Good	Good	Good	Good	2021 or earlier	Not at risk					<a href="#">View WB Page</a>	<a href="#">View WB on EPA Water Map</a>
9	IE_EA_09D010300	DODDER_030	River	South Dublin County Council	SAC;	Good	Moderate	Good	Good	2021 or earlier	Review			Dodder	South Dublin County Council, Restoration	<a href="#">View WB Page</a>	<a href="#">View WB on EPA Water Map</a>
9	IE_EA_09D010620	DODDER_040	River	South Dublin County Council		Moderate	Poor	Moderate	Good	2022-2027	At risk	Nutrients, Organic	UR	Dodder	South Dublin County Council, Restoration	<a href="#">View WB Page</a>	<a href="#">View WB on EPA Water Map</a>
9	IE_EA_09D010900	DODDER_050	River	Dublin City Council	NSA;	Moderate	Moderate	Moderate	Good	2022-2027	At risk	Morphological, Nutrients, Organic, UnknownImpactType	UWW, UR, Unknown	Dodder	South Dublin County Council, Restoration	<a href="#">View WB Page</a>	<a href="#">View WB on EPA Water Map</a>
9	IE_EA_09D020200	DOUGLAS (LIFFEY)_010	River	Wicklow County Council	SAC;	Good	Good	Good	Good	2021 or earlier	Not at risk			Liffey Upper	LAWPRO, Restoration	<a href="#">View WB Page</a>	<a href="#">View WB on EPA Water Map</a>
9	IE_EA_09D040500	DUNBOYNE STREAM_010	River	Meath County Council		Moderate	Moderate	Poor	Good	2022-2027	At risk	Nutrients, Organic	Ag, DWTS	Tolka	LAWPRO, Restoration	<a href="#">View WB Page</a>	<a href="#">View WB on EPA Water Map</a>
9	IE_EA_09G090950	GOLDENHILL_010	River	Wicklow County Council	SPA;	Unassigned	Good	Good	Good	2021 or earlier	Not at risk			Ballymore Eustace	LAWPRO, Restoration	<a href="#">View WB Page</a>	<a href="#">View WB on EPA Water Map</a>
9	IE_EA_09H230880	HOWTH_010	River	Fingal County Council	SAC; SPA;	Unassigned	Poor	Moderate	Good	2022-2027	Review					<a href="#">View WB Page</a>	<a href="#">View WB on EPA Water Map</a>
9	IE_EA_09J010950	Jeninstown stream_010	River	Meath County Council		Unassigned	Moderate	Moderate	Good	2022-2027	At risk	Nutrients	DWTS, Ag	Rye Water	LAWPRO, Restoration	<a href="#">View WB Page</a>	<a href="#">View WB on EPA Water Map</a>
9	IE_EA_09K010060	KING'S (LIFFEY)_010	River	Wicklow County Council	SAC;	Moderate	Moderate	Bad	Good	2022-2027	At risk	Acidification	For	Liffey Upper	LAWPRO, Restoration	<a href="#">View WB Page</a>	<a href="#">View WB on EPA Water Map</a>
9	IE_EA_09K010100	KING'S (LIFFEY)_020	River	Wicklow County Council	SAC;	Good	Moderate	Good	Good	2021 or earlier	Not at risk			Liffey Upper	LAWPRO, Restoration	<a href="#">View WB Page</a>	<a href="#">View WB on EPA Water Map</a>
9	IE_EA_09K260890	KILMURRY_010	River	Kildare County Council		Unassigned	Unassigned	Poor	Good	2022-2027	Review					<a href="#">View WB Page</a>	<a href="#">View WB on EPA Water Map</a>
9	IE_EA_09L010100	LIFFEY_010	River	Wicklow County Council	SAC;	Moderate	Moderate	High	Good	2021 or earlier	Not at risk			Liffey Upper	LAWPRO, Restoration	<a href="#">View WB Page</a>	<a href="#">View WB on EPA Water Map</a>
9	IE_EA_09L010200	LIFFEY_020	River	Wicklow County Council	SAC;	Moderate	Good	Good	Good	2021 or earlier	Review			Liffey Upper	LAWPRO, Restoration	<a href="#">View WB Page</a>	<a href="#">View WB on EPA Water Map</a>
9	IE_EA_09L010250	LIFFEY_030	River	Wicklow County Council	SAC; SPA;	Good	Good	Moderate	Good	2022-2027	At risk	Hydrological, Morphological	HYMO	Liffey Upper	LAWPRO, Restoration	<a href="#">View WB Page</a>	<a href="#">View WB on EPA Water Map</a>

9	IE_EA_09L010400	LIFFEY_040	River	Wicklow County Council	DWPA; SAC; SPA;	Moderate	Moderate	Good	Good	2021 or earlier	Not at risk			Ballymore Eustace	LAWPRO, Restoration	<a href="#">View WB Page</a>	<a href="#">View WB on EPA Water Map</a>
9	IE_EA_09L010600	LIFFEY_050	River	Kildare County Council		Moderate	Moderate	Good	Good	2021 or earlier	Not at risk			Liffey	Kildare County Council, Restoration	<a href="#">View WB Page</a>	<a href="#">View WB on EPA Water Map</a>
9	IE_EA_09L010700	LIFFEY_060	River	Kildare County Council		Moderate	Moderate	Moderate	Good	2022-2027	At risk	Nutrients, UnknownImpactType	Ag	Liffey	Kildare County Council, Restoration	<a href="#">View WB Page</a>	<a href="#">View WB on EPA Water Map</a>
9	IE_EA_09L010850	LIFFEY_070	River	Kildare County Council		Good	Good	High	Good	2021 or earlier	Not at risk					<a href="#">View WB Page</a>	<a href="#">View WB on EPA Water Map</a>
9	IE_EA_09L011000	LIFFEY_080	River	Kildare County Council		Good	Good	Good	Good	2021 or earlier	Not at risk					<a href="#">View WB Page</a>	<a href="#">View WB on EPA Water Map</a>
9	IE_EA_09L011050	LIFFEY_090	River	Kildare County Council	SAC;	Good	Good	Good	Good	2021 or earlier	Not at risk					<a href="#">View WB Page</a>	<a href="#">View WB on EPA Water Map</a>
9	IE_EA_09L011200	LIFFEY_100	River	Kildare County Council	NSA;	Moderate	Moderate	Good	Good	2021 or earlier	Not at risk					<a href="#">View WB Page</a>	<a href="#">View WB on EPA Water Map</a>
9	IE_EA_09L011300	LIFFEY_110	River	Kildare County Council		Unassigned	Moderate	Good	Good	2021 or earlier	Review					<a href="#">View WB Page</a>	<a href="#">View WB on EPA Water Map</a>
9	IE_EA_09L011500	LIFFEY_120	River	Kildare County Council	NSA;	Good	Good	Good	Good	2021 or earlier	Not at risk					<a href="#">View WB Page</a>	<a href="#">View WB on EPA Water Map</a>
9	IE_EA_09L011600	LIFFEY_130	River	Kildare County Council	NSA;	Good	Good	Good	Good	2021 or earlier	Not at risk					<a href="#">View WB Page</a>	<a href="#">View WB on EPA Water Map</a>
9	IE_EA_09L011700	LIFFEY_140	River	Kildare County Council	NSA;	Good	Good	Good	Good	2021 or earlier	Not at risk					<a href="#">View WB Page</a>	<a href="#">View WB on EPA Water Map</a>
9	IE_EA_09L011900	LIFFEY_150	River	Kildare County Council	DWPA; SAC; NSA;	Poor	Good	Good	Good	2021 or earlier	Review					<a href="#">View WB Page</a>	<a href="#">View WB on EPA Water Map</a>
9	IE_EA_09L012040	LIFFEY_160	River	Kildare County Council	NSA;	Unassigned	Poor	Poor	Good	2022-2027	Review					<a href="#">View WB Page</a>	<a href="#">View WB on EPA Water Map</a>
9	IE_EA_09L012100	LIFFEY_170	River	South Dublin County Council	NSA;	Moderate	Moderate	Poor	Good	2022-2027	At risk	Nutrients, Organic	UR, UWW			<a href="#">View WB Page</a>	<a href="#">View WB on EPA Water Map</a>
9	IE_EA_09L012350	LIFFEY_180	River	South Dublin County Council	NSA;	Unassigned	Moderate	Poor	Good	2022-2027	At risk	Nutrients, Organic	UWW, UR			<a href="#">View WB Page</a>	<a href="#">View WB on EPA Water Map</a>
9	IE_EA_09L012360	LIFFEY_190	River	Dublin City Council	NSA;	Moderate	Moderate	Poor	Good	2022-2027	At risk	Nutrients, Organic	UR, UWW			<a href="#">View WB Page</a>	<a href="#">View WB on EPA Water Map</a>
9	IE_EA_09L020035	LYREEN_010	River	Kildare County Council		Poor	Poor	Poor	Good	2022-2027	At risk	Morphological, Nutrients, Organic	Ind, DWTS, HYMO, Ag	Clonshanbo - Lyreen	LAWPRO, Restoration	<a href="#">View WB Page</a>	<a href="#">View WB on EPA Water Map</a>
9	IE_EA_09L020100	LYREEN_020	River	Kildare County Council		Poor	Poor	Poor	Good	2022-2027	At risk	Nutrients, Organic	UR, Ag	Clonshanbo - Lyreen	LAWPRO, Restoration	<a href="#">View WB Page</a>	<a href="#">View WB on EPA Water Map</a>
9	IE_EA_09L030100	LEMONSTOWN STREAM_010	River	Wicklow County Council		Good	Good	Good	High	2022-2027	At risk	Hydrological, Morphological	HYMO	Lemonstown Stream - Blue Dot	LAWPRO, Restoration	<a href="#">View WB Page</a>	<a href="#">View WB on EPA Water Map</a>
9	IE_EA_09L030600	LEMONSTOWN STREAM_020	River	Wicklow County Council		Good	Good	Good	Good	2021 or earlier	Not at risk			Lemonstown Stream	Wicklow County Council, Protection	<a href="#">View WB Page</a>	<a href="#">View WB on EPA Water Map</a>
9	IE_EA_09M010060	MORELL_010	River	Kildare County Council		Moderate	Good	Good	Good	2021 or earlier	Not at risk			Morell	LAWPRO, Restoration	<a href="#">View WB Page</a>	<a href="#">View WB on EPA Water Map</a>
9	IE_EA_09M010100	MORELL_020	River	Kildare County Council		Poor	Poor	Poor	Good	2022-2027	At risk	Morphological	HYMO	Morell	LAWPRO, Restoration	<a href="#">View WB Page</a>	<a href="#">View WB on EPA Water Map</a>
9	IE_EA_09M010150	MORELL_030	River	Kildare County Council		Moderate	Poor	Moderate	Good	2022-2027	At risk	Sediment, Morphological	HYMO, Ag	Morell	LAWPRO, Restoration	<a href="#">View WB Page</a>	<a href="#">View WB on EPA Water Map</a>
9	IE_EA_09M010300	MORELL_040	River	Kildare County Council		Good	Moderate	Moderate	Good	2022-2027	At risk	Sediment, Nutrients	Unknown, Ag	Morell	LAWPRO, Restoration	<a href="#">View WB Page</a>	<a href="#">View WB on EPA Water Map</a>
9	IE_EA_09M030500	MAYNE_010	River	Fingal County Council	SAC;	Poor	Poor	Poor	Good	2022-2027	At risk	Nutrients, Organic, UnknownImpactType	UR	Santry Mayne	Dublin City Council, Restoration	<a href="#">View WB Page</a>	<a href="#">View WB on EPA Water Map</a>
9	IE_EA_09O011700	OWENADOHER_010	River	South Dublin County Council	SAC;	Moderate	Good	Moderate	Good	2022-2027	At risk	Nutrients	UR	Dodder	South Dublin County Council, Restoration	<a href="#">View WB Page</a>	<a href="#">View WB on EPA Water Map</a>
9	IE_EA_09P010400	PAINESTOWN_010	River	Kildare County Council		Moderate	Poor	Poor	Good	2022-2027	At risk	Morphological, Nutrients	HYMO, Ag	Painestown	Kildare County Council, Restoration	<a href="#">View WB Page</a>	<a href="#">View WB on EPA Water Map</a>
9	IE_EA_09P020500	PINKEEN_010	River	Meath County Council		Poor	Poor	Moderate	Good	2022-2027	At risk	Morphological, Nutrients	Ag, DWTS	Tolka	LAWPRO, Restoration	<a href="#">View WB Page</a>	<a href="#">View WB on EPA Water Map</a>
9	IE_EA_09P030800	Poddle_010	River	Dublin City Council	NSA;	Unassigned	Poor	Poor	Good	2022-2027	At risk	Nutrients, Organic	UR	Poddle	South Dublin County Council and Dublin City Council, Restoration	<a href="#">View WB Page</a>	<a href="#">View WB on EPA Water Map</a>
9	IE_EA_09P210700	Powerstown (Dublin)_010	River	Fingal County Council		Unassigned	Poor	Poor	Good	2022-2027	At risk	Sediment, Nutrients, Organic	Ag, UR	Tolka	LAWPRO, Restoration	<a href="#">View WB Page</a>	<a href="#">View WB on EPA Water Map</a>
9	IE_EA_09R010100	RYE WATER_010	River	Meath County Council		Moderate	Moderate	Moderate	Good	2022-2027	At risk	Nutrients, UnknownImpactType	DWTS, Ag	Rye Water	LAWPRO, Restoration	<a href="#">View WB Page</a>	<a href="#">View WB on EPA Water Map</a>
9	IE_EA_09R010300	RYE WATER_020	River	Meath County Council		Poor	Moderate	Good	Good	2021 or earlier	Review			Rye Water	LAWPRO, Restoration	<a href="#">View WB Page</a>	<a href="#">View WB on EPA Water Map</a>
9	IE_EA_09R010400	RYE WATER_030	River	Meath County Council		Poor	Moderate	Poor	Good	2022-2027	At risk	Morphological, Nutrients	DWTS, Ag, HYMO	Rye Water	LAWPRO, Restoration	<a href="#">View WB Page</a>	<a href="#">View WB on EPA Water Map</a>
9	IE_EA_09R010600	RYE WATER_040	River	Kildare County Council	SAC;	Poor	Poor	Moderate	Good	2022-2027	At risk	Nutrients, Organic	Ag, UR, DWTS	Rye Water	LAWPRO, Restoration	<a href="#">View WB Page</a>	<a href="#">View WB on EPA Water Map</a>
9	IE_EA_09R020300	RATHMORE STREAM_010	River	Kildare County Council		Poor	Poor	Moderate	Good	2022-2027	At risk	Morphological	HYMO, Ag	Morell	LAWPRO, Restoration	<a href="#">View WB Page</a>	<a href="#">View WB on EPA Water Map</a>
9	IE_EA_09R140550	REEVES_010	River	Kildare County Council		Unassigned	Good	Good	Good	2021 or earlier	Review			Reeves	Kildare County Council, Restoration	<a href="#">View WB Page</a>	<a href="#">View WB on EPA Water Map</a>
9	IE_EA_09S010300	SANTRY_010	River	Fingal County Council		Poor	Poor	Poor	Good	2022-2027	At risk	Nutrients, Organic	UR, UWW	Santry Mayne	Dublin City Council, Restoration	<a href="#">View WB Page</a>	<a href="#">View WB on EPA Water Map</a>
9	IE_EA_09S011100	SANTRY_020	River	Dublin City Council	SAC; SPA; NSA;	Unassigned	Moderate	Poor	Good	2022-2027	At risk	Nutrients, Organic, UnknownImpactType	UWW, UR	Santry Mayne	Dublin City Council, Restoration	<a href="#">View WB Page</a>	<a href="#">View WB on EPA Water Map</a>
9	IE_EA_09S071100	SLUICE_010	River	Fingal County Council		Unassigned	Poor	Poor	Good	2022-2027	Review					<a href="#">View WB Page</a>	<a href="#">View WB on EPA Water Map</a>
9	IE_EA_09T010300	TOLKA_010	River	Meath County Council		Poor	Moderate	Poor	Good	2022-2027	At risk	Sediment, Nutrients	Ag, DWTS	Tolka	LAWPRO, Restoration	<a href="#">View WB Page</a>	<a href="#">View WB on EPA Water Map</a>
9	IE_EA_09T010600	TOLKA_020	River	Meath County Council		Poor	Poor	Moderate	Good	2022-2027	At risk	Morphological, Nutrients	Ag	Tolka	LAWPRO, Restoration	<a href="#">View WB Page</a>	<a href="#">View WB on EPA Water Map</a>

9	IE_EA_09T010800	TOLKA_030	River	Fingal County Council		Bad	Poor	Poor	Good	2022-2027	At risk	Nutrients, Organic	UR, Ind	Tolka	LAWPRO, Restoration	<a href="#">View WB Page</a>	<a href="#">View WB on EPA Water Map</a>
9	IE_EA_09T011000	TOLKA_040	River	Fingal County Council		Poor	Poor	Poor	Good	2022-2027	At risk	Nutrients, Organic	UR	Tolka	LAWPRO, Restoration	<a href="#">View WB Page</a>	<a href="#">View WB on EPA Water Map</a>
9	IE_EA_09T011100	TOLKA_050	River	Fingal County Council		Poor	Poor	Poor	Good	2022-2027	At risk	Nutrients, Organic	UR, UWW	Tolka	LAWPRO, Restoration	<a href="#">View WB Page</a>	<a href="#">View WB on EPA Water Map</a>
9	IE_EA_09T011150	TOLKA_060	River	Dublin City Council	NSA;	Unassigned	Moderate	Poor	Good	2022-2027	At risk	Nutrients, Organic	UWW, UR	Lower Tolka	Dublin City Council, Restoration	<a href="#">View WB Page</a>	<a href="#">View WB on EPA Water Map</a>
8, 9	IE_EA_060_0100	Broadmeadow Water	Transitional	Fingal County Council	SAC; SPA; NSA;	Moderate	Poor	Moderate	Good	2022-2027	At risk	Nutrients, Organic	UWW, DWTS			<a href="#">View WB Page</a>	<a href="#">View WB on EPA Water Map</a>
9	IE_EA_080_0100	Mayne Estuary	Transitional	Fingal County Council	SAC; SPA;	Unassigned	Moderate	Moderate	Good	2022-2027	Review					<a href="#">View WB Page</a>	<a href="#">View WB on EPA Water Map</a>
9	IE_EA_090_0100	North Bull Island	Transitional	Dublin City Council	SAC; SPA;	Unassigned	Moderate	Moderate	Good	2022-2027	Review					<a href="#">View WB Page</a>	<a href="#">View WB on EPA Water Map</a>
9	IE_EA_090_0200	Tolka Estuary	Transitional	Dublin City Council	SAC; SPA; NSA;	Moderate	Moderate	Poor	Good	2022-2027	At risk	Nutrients	UWW			<a href="#">View WB Page</a>	<a href="#">View WB on EPA Water Map</a>
9	IE_EA_090_0300	Liffey Estuary Lower	Transitional	Dublin City Council	SAC; SPA; NSA;	Moderate	Good	Moderate	Good	2022-2027	At risk	Nutrients	UWW			<a href="#">View WB Page</a>	<a href="#">View WB on EPA Water Map</a>
9	IE_EA_090_0400	Liffey Estuary Upper	Transitional	Dublin City Council	NSA;	Moderate	Good	Good	Good	2021 or earlier	Review					<a href="#">View WB Page</a>	<a href="#">View WB on EPA Water Map</a>