



Cycle 3

HA 08 Nanny-Delvin Catchment Report, May  
2024

Introduction

Water Quality  
Summary

High Status  
Objectives

Water Quality  
Changes

WFD Risk

Significant  
Pressures

Action

Summary  
Information

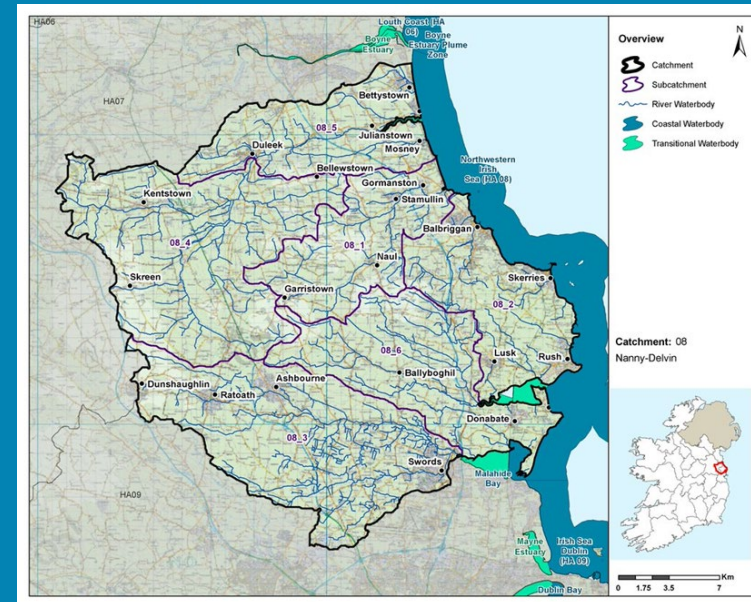
# Introduction

This report provides an overview of the water quality in the Nanny-Delvin Catchment and the pressures impacting on water quality. This report is based on data up to 2021. The latest water quality data, dashboards and maps throughout this report are available on [catchments.ie](https://catchments.ie) and [EPA Water Map](https://www.epa.ie/maps).

The Nanny-Delvin Catchment includes the area drained by the Rivers Nanny and Delvin and by all streams entering tidal water between Mornington Point and Sea Mount, Co. Dublin, draining a total area of 711km<sup>2</sup>. The largest urban centre in the catchment is Swords. The other main urban centres in this catchment are Donabate, Lusk, Skerries, Balbriggan, Stamullin, Laytown, Bettystown, Duleek, Ashbourne, Ratoath and Dunshaughlin.

The Nanny Delvin Catchment is divided into six subcatchments with 34 river waterbodies, three transitional, three coastal and 16 groundwater bodies.

[View the Nanny-Delvin Catchment on the EPA Water Map](#)



Overview of Subcatchments in the Nanny-Delvin Catchment

## Previous Catchment Assessments

Previous catchment assessments, which provide additional historic context and information, are archived on [catchments.ie](https://catchments.ie):

- [Cycle 2 Catchment Assessments – published September 2018](#)
- [Cycle 3 Draft Catchment Assessments – published September 2021](#)

## Online Dashboards

Links to online dashboards are provided in this report – these numbers may vary from those in this document as time progresses and the online dashboards are updated based on the latest data and scientific assessments.

# Water Quality Summary

Introduction

Water Quality Summary

High Status Objectives

Water Quality Changes

WFD Risk

Significant Pressures

Action

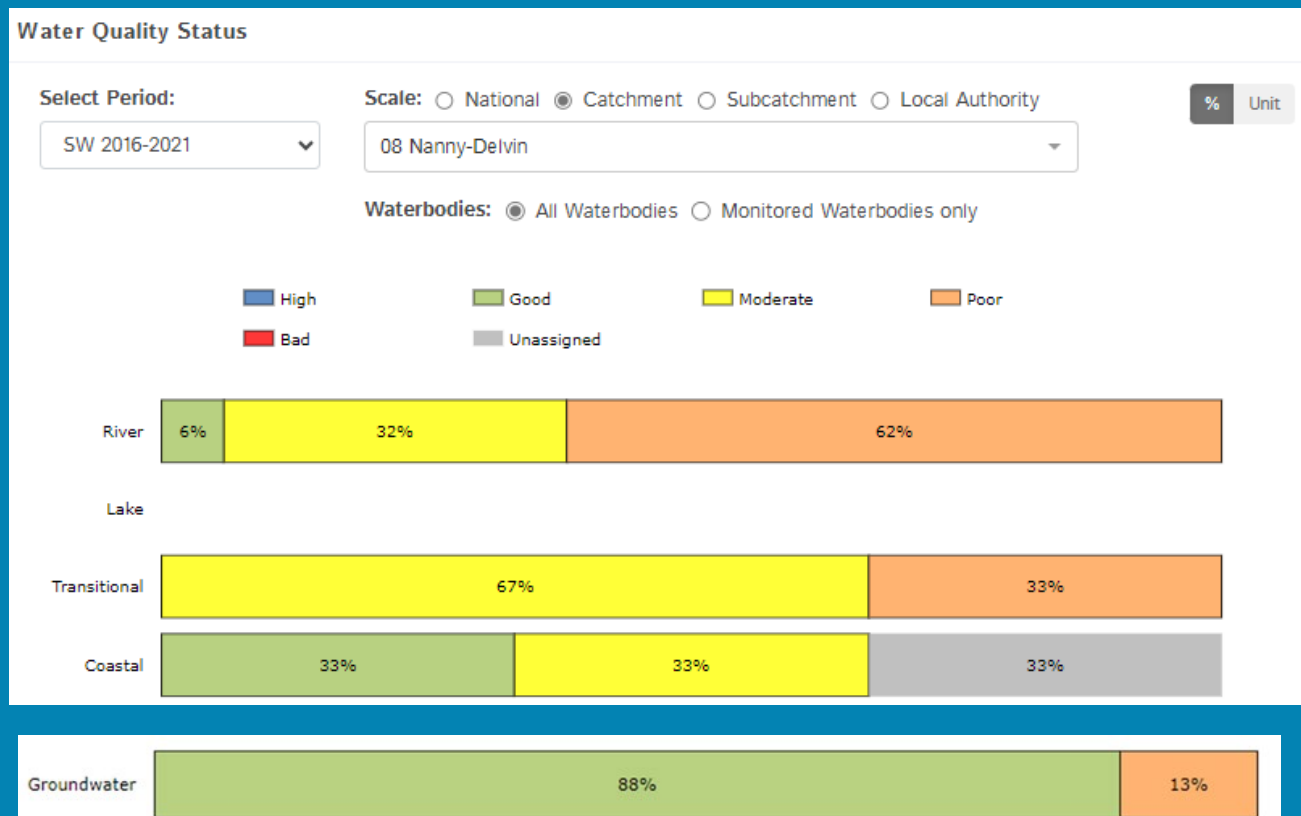
Summary Information

The dashboard below provides a breakdown of water quality status for surface and groundwater bodies in the Nanny-Delvin Catchment.

A total of 8% of surface waterbodies were at Good Status in the 2016-2021 monitoring period. Eighty-eight percent of groundwater bodies were at Good status.

**Go to EPA Water Maps for WFD Status**

[EPA Water Map](#)



Water quality status 2016-2021 for the Nanny-Delvin Catchment.

View Online Dashboard: <https://www.catchments.ie/data/#/dashboard/waterquality>

# High Status Objective Waterbodies

Introduction

High status waters are prioritised for protection and action.

There is one waterbody with a **High Ecological Status Objective (HSO)** in the Nanny-Delvin Catchment currently not meeting its environmental objective of High.

Water Quality Summary

Grants for septic tank upgrades may be available in high status objective catchment areas - you can learn more and check your Eircode for eligibility here: <https://www.gov.ie/en/publication/6cc1e-domestic-waste-water-treatment-systems-septic-tanks>

The [EPA Water Map](#) shows the locations of HSO waterbodies. See *Status and Risk / High Status Objectives*.

High Status Objectives

Water Quality Changes

WFD Risk

Significant Pressures

Action

Summary Information

Water Quality Status - High Status Objective Waterbodies

SCALE:  Catchment  Local Authority

SELECT TYPE:

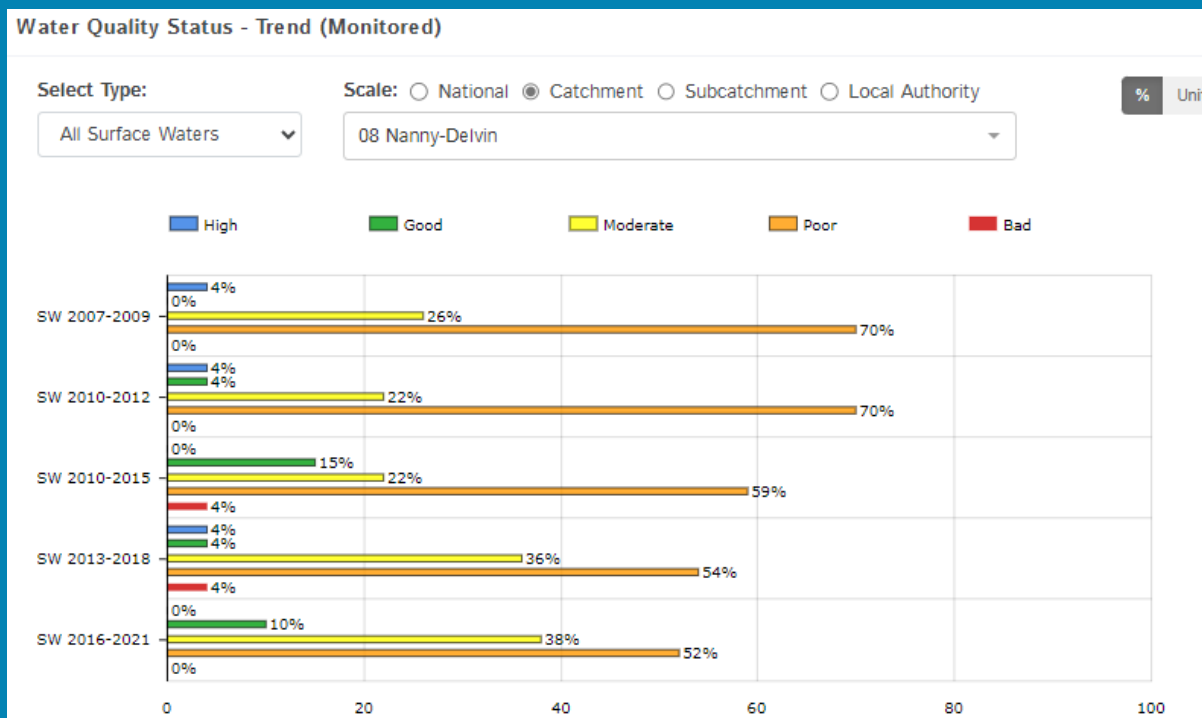
	SW 2007-2009	SW 2010-2012	SW 2010-2015	SW 2013-2018	SW 2016-2021
Northwestern Irish Sea (HA 08) (Coastal)	High	High	Good	High	Good

*Water quality status for High Ecological Status Objective waterbodies.*

**View Online Dashboard:** <https://www.catchments.ie/data/#/dashboard/waterquality>

# Water Quality Changes

Below illustrates the changes in ecological status in monitored surface waterbodies over the last five monitoring cycles in the Nanny-Delvin Catchment. Nationally while there have been improvements in some waterbodies, these have been offset by declines elsewhere.



Ecological status trends for monitored surface waterbodies over the last five monitoring cycles in the Nanny-Delvin Catchment.

**View online dashboard:** <https://www.catchments.ie/data/#/dashboard/waterquality>

A total of 16 (29%) waterbodies are currently meeting their environmental objective of Good or High Ecological Status.

	Total	Achieving Environmental Objectives (2016-2021)	High Status Environmental Objectives Waterbodies	Achieving High Status Environmental Objectives (2016-2021)
<b>Rivers</b>	34	2 (6%)	0	0 (0%)
<b>Canals</b>	-	-	-	-
<b>Lakes</b>	-	-	-	-
<b>Transitional</b>	3	0 (0%)	0	0 (0%)
<b>Coastal</b>	3	0 (0%)	1	0 (0%)
<b>Groundwater</b>	16	14 (88%)	0	0 (0%)

Introduction

Water Quality Summary

High Status Objectives

Water Quality Changes

WFD Risk

Significant Pressures

Action

Summary Information

# WFD Risk

Introduction

Water Quality Summary

High Status Objectives

Water Quality Changes

WFD Risk

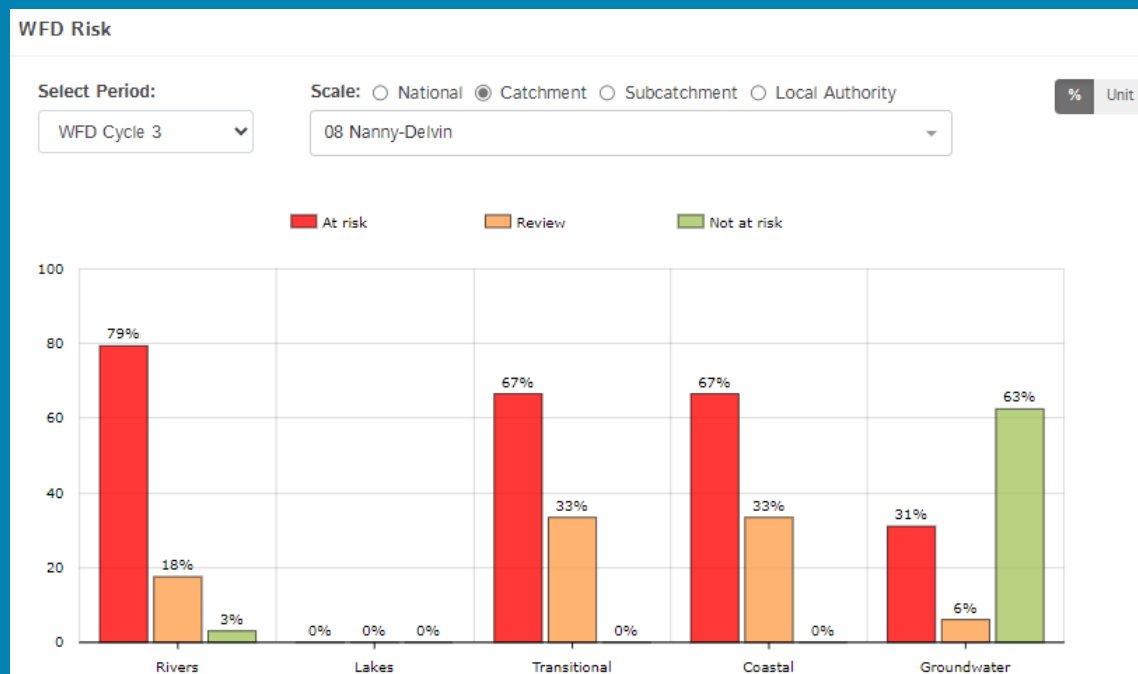
Significant Pressures

Action

Summary Information

A total of 36 (64%) waterbodies are *At Risk* of not meeting their environmental objective in the Nanny-Delvin Catchment, while 9 (16%) are under *Review* and 11 (20%) are *Not At Risk*.

Go to [EPA Water Map](#) to see WFD Risk for this catchment



WFD Risk for the Nanny-Delvin Catchment based on 2016-2021 data.

View Online Dashboard: <https://www.catchments.ie/data/#/dashboard/waterquality>

There is currently one heavily modified water bodies (HMWBs) in the Nanny-Delvin catchment, (Broadmeadow Water). It is currently *At Risk*.

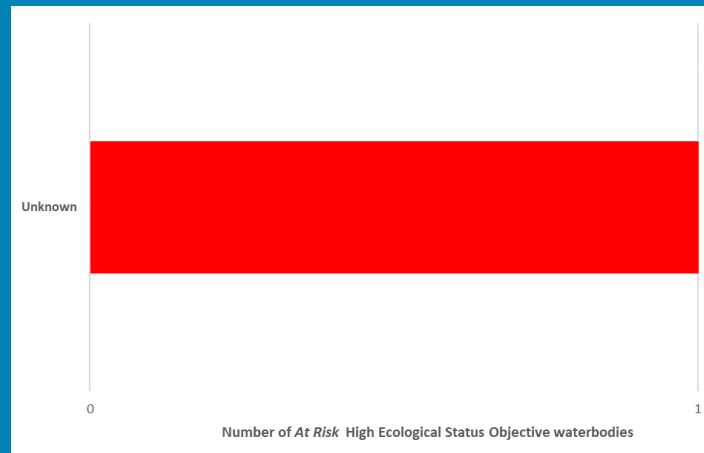
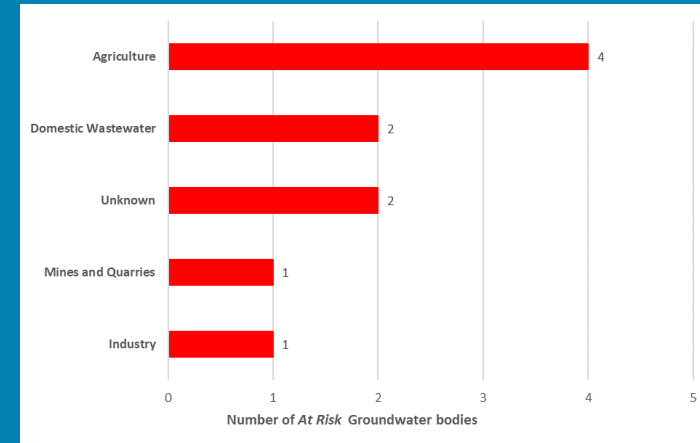
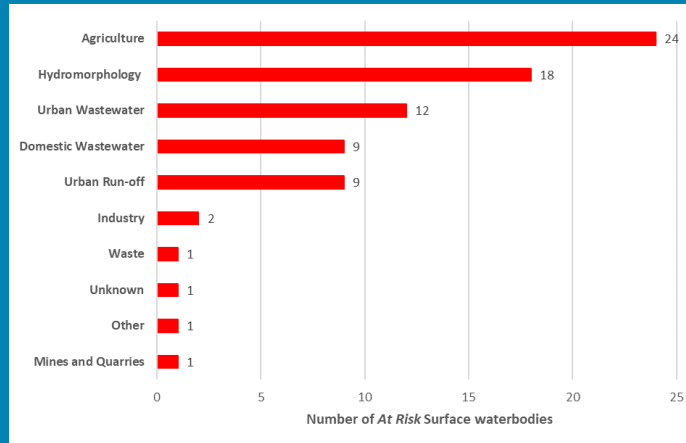
There are no artificial waterbodies in the Nanny-Delvin Catchment.

The [EPA's characterisation outcome report](#) has more information on WFD Risk

Click [here](#) for more information on significant pressures

## Significant Pressures driving risk

Significant pressure types impacting the 31 *At Risk* surface waterbodies and five groundwater bodies are broken down in the figures below, including significant pressure information for the one *At Risk* High Ecological Status Objective waterbody.



The issues driven by these pressures are mainly nutrient pollution, organic pollution and altered morphological condition (habitat) impacts for surface water, and chemical quality diminution for surface water, nutrient pollution and chemical pollution for groundwaters. For more information, see <https://www.catchments.ie/data/#/dashboard/pressure?k=i351zs>.

**Go to the Summary Information section to get significant pressure and issue data for At Risk waterbodies within the Nanny-Delvin Catchment.**

Introduction

Water Quality Summary

High Status Objectives

Water Quality Changes

WFD Risk

Significant Pressures

Action

Summary Information

Introduction

Water Quality  
Summary

High Status  
Objectives

Water Quality  
Changes

WFD Risk

Significant  
Pressures

Action

Summary  
Information

## Significant Pressures

Agriculture is the top significant pressure impacting 78% of the 36 *At Risk* waterbodies within the Nanny-Delvin catchment, followed by 50% impacted by hydromorphological pressures and 33% by urban wastewater.

River Waterbody

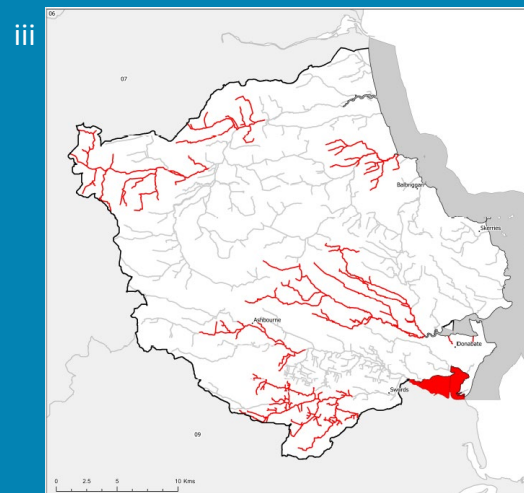
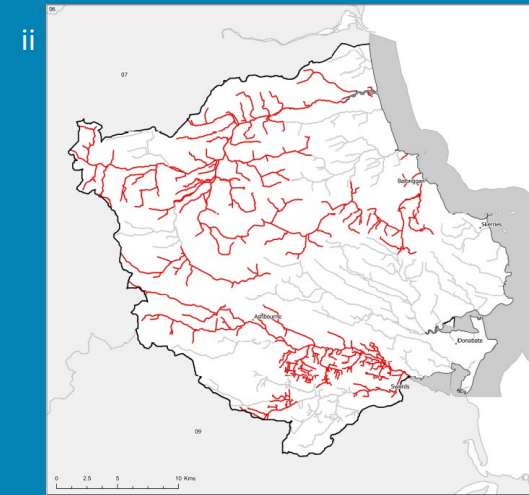
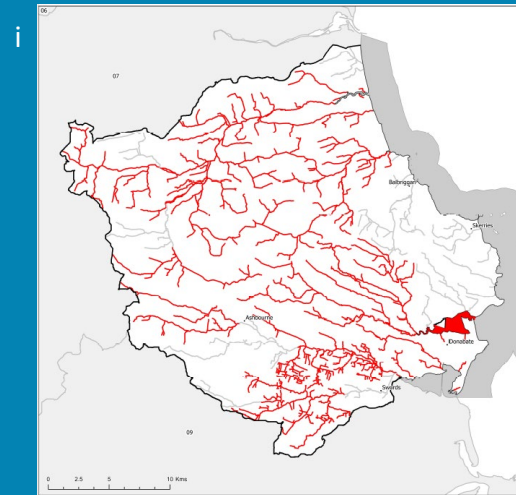
Significant Pressure  
in Waterbody *At Risk*

Other Waterbodies

Lake, Coastal and  
Transitional Waterbody

Significant Pressure  
in Waterbody *At Risk*

Other Waterbodies



**The catchments.ie dashboards will  
show all significant pressures  
identified for this catchment.**

[www.catchments.ie/data/#/dashboard/pressure](http://www.catchments.ie/data/#/dashboard/pressure)

**Go to the [EPA Water Maps](#) for the  
locations of all significant pressure  
types identified for this catchment**

*Locations of At Risk surface waterbodies impacted by i) Agriculture, ii) Hydromorphological Pressures and iii) Urban Wastewater.*

Introduction

Water Quality  
Summary

High Status  
Objectives

Water Quality  
Changes

WFD Risk

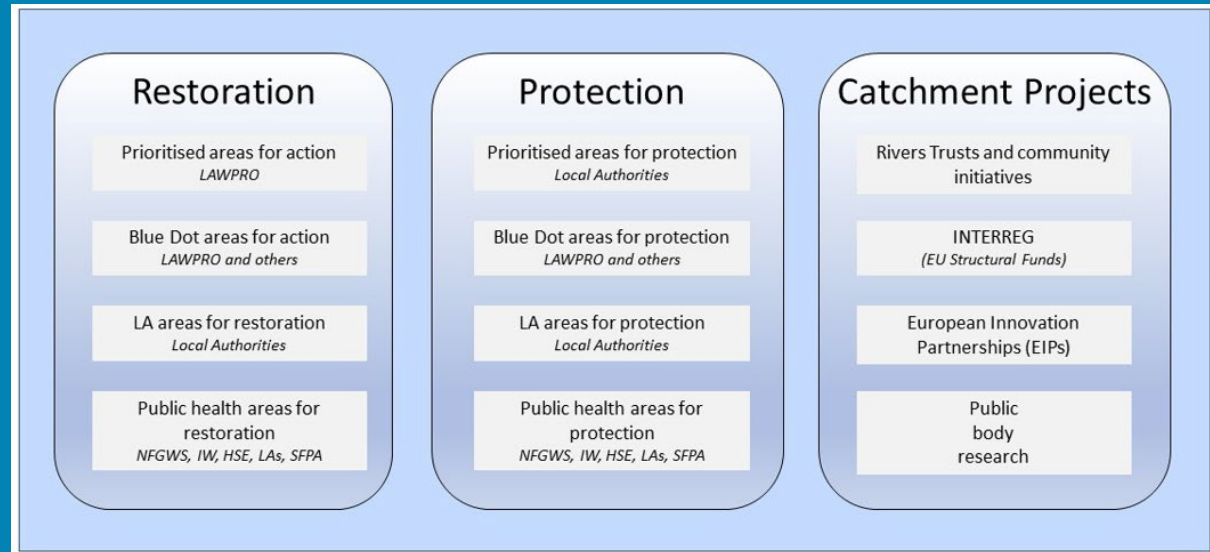
Significant  
Pressures

Action

Summary  
Information

## Priority Areas for Action

A number of waterbodies have been prioritised through the selection of Areas for Action. There were three Priority Areas for Action identified for the second river basin management planning cycle in the Nanny-Delvin Catchment. This has increased to a total of nine Areas for Restoration and one Catchment Project for the third cycle. **Go to the summary information section to get Area for Action information for waterbodies within the Nanny-Delvin Catchment.**



*Types of Areas for Action under the third cycle River Basin Management Plan*

- View the current progress of Areas for Action and Summary Reports completed by LAWPRO, on catchments.ie and the EPA Water Map:
  - <https://www.catchments.ie/data/#/areaforaction>
  - [https://gis.epa.ie/EPAMaps/default?easting=?&northing=?&lid=EPA:WFD\\_AreasForAction](https://gis.epa.ie/EPAMaps/default?easting=?&northing=?&lid=EPA:WFD_AreasForAction)
- LAWPRO have also published detailed desktop studies on Prioritised Areas for Action (PAAs) which are available their website: <https://lawaters.ie/desktop-studies/>
- Information on Areas for Action for the second cycle is available in Cycle 2 Catchment Assessments which have been archived on catchments.ie: <https://www.catchments.ie/download/cycle-2-catchment-assessments-published-september-2018/>

# Summary information for all waterbodies in the Nanny-Delvin Catchment

The next page provides a table with a breakdown of key information for all waterbodies in this catchment. The key is provided below. Additional information for each waterbody is available on <https://www.catchments.ie/data>, including a breakdown of status, a monitoring schedule for monitored waterbodies and downloadable chemistry results, where available.

<b>Protected Area categories</b>	BW: Bathing Water DW: Drinking Water Fish: Salmonid Waters NSA: Nutrient Sensitive Areas SAC: Special Area of Conservation, Natura 2000 (water dependent habitats and species) SF: Shellfish Area SPA: Special Area of Protection, Natura 2000 (water dependent habitat and species)
<b>Significant pressure* types categories</b>  <i>* For At Risk waterbodies only</i>	Ab: Abstractions Ag: Agriculture Aq: Aquaculture At: Atmospheric DWW: Domestic Wastewater For: Forestry HPS: Historically polluted sites HYMO: Hydromorphology Ind: Industry IS: Invasive Species M+Q: Mines and Quarries Peat: Peat Drainage and Extraction UR: Urban Run-Off UWW: Urban Wastewater Was: Waste WT: Water Treatment

Introduction

Water Quality Summary

High Status Objectives

Water Quality Changes

WFD Risk

Significant Pressures

Action

Summary Information

Catchment Code	Waterbody (WB) Code	WB Name	WB Type	Local Authority	Protected Area	Status 10-15	Status 13-18	Status 16-21	Environmental Objective	Environmental Objective Date	WFD Risk 16-21	Significant Issue(s)	Significant Pressure(s)	Area for Action (AFA)	AFA (lead, type)	Link to WB page on catchments.ie	Link to WB on EPA Water Map
7, 8, 9	IE_EA_020_0000	Northwestern Irish Sea (HA 08)	Coastal	Fingal County Council	BW; SAC; SPA; SF;	Good	High	Good	High	2022-2027	At risk	UnknownImpactType	Unknown			<a href="#">View WB Page</a>	<a href="#">View WB on EPA Water Map</a>
8	IE_EA_040_0000	Rockabill	Coastal	Fingal County Council	SAC; SPA;	Unassigned	Unassigned	Unassigned	Good	Unknown	Review					<a href="#">View WB Page</a>	<a href="#">View WB on EPA Water Map</a>
8, 9	IE_EA_060_0000	Malahide Bay	Coastal	Fingal County Council	SAC; SPA; NSA;	Moderate	Moderate	Moderate	Good	2022-2027	At risk	Nutrients, Organic	UWW			<a href="#">View WB Page</a>	<a href="#">View WB on EPA Water Map</a>
14, 7, 8, 9	IE_EA_G_002	Trim	Groundwater	Meath County Council	DWPA; SAC	Good	Good	Good	Good	2021 or earlier	At risk	ChemicalQualityDiminution ForSW, Nutrients	DWTS, Unknown, Ag			<a href="#">View WB Page</a>	<a href="#">View WB on EPA Water Map</a>
14, 7, 8, 9	IE_EA_G_008	Dublin	Groundwater	South Dublin County Council	DWPA; SAC	Good	Good	Good	Good	2021 or earlier	Review					<a href="#">View WB Page</a>	<a href="#">View WB on EPA Water Map</a>
8, 9	IE_EA_G_011	Swords	Groundwater	Fingal County Council	DWPA; SAC	Good	Good	Good	Good	2021 or earlier	Not at risk					<a href="#">View WB Page</a>	<a href="#">View WB on EPA Water Map</a>
8	IE_EA_G_012	Duleek	Groundwater	Meath County Council	DWPA	Good	Good	Good	Good	2021 or earlier	Not at risk					<a href="#">View WB Page</a>	<a href="#">View WB on EPA Water Map</a>
7, 8, 9	IE_EA_G_014	Lusk-Bog of the Ring	Groundwater	Fingal County Council	DWPA	Good	Good	Good	Good	2021 or earlier	At risk	Chemical, ChemicalQualityDiminution ForSW, Nutrients	Ag, Unknown, DWTS			<a href="#">View WB Page</a>	<a href="#">View WB on EPA Water Map</a>
7, 8	IE_EA_G_016	Bettystown	Groundwater	Meath County Council	DWPA	Poor	Poor	Poor	Good	2022-2027	At risk	ChemicalQualityDiminution ForSW, GWAbstractionExceedance, Nutrients, OtherSignificantImpacts	Ag, M+Q			<a href="#">View WB Page</a>	<a href="#">View WB on EPA Water Map</a>
7, 8	IE_EA_G_020	Realtage	Groundwater	Meath County Council	DWPA	Good	Good	Good	Good	2021 or earlier	Not at risk					<a href="#">View WB Page</a>	<a href="#">View WB on EPA Water Map</a>
7, 8	IE_EA_G_021	Donore	Groundwater	Meath County Council	DWPA; SAC	Good	Good	Good	Good	2021 or earlier	Not at risk					<a href="#">View WB Page</a>	<a href="#">View WB on EPA Water Map</a>
6, 7, 8	IE_EA_G_025	Drogheda	Groundwater	Louth County Council	DWPA; SAC	Good	Good	Good	Good	2021 or earlier	At risk	ChemicalQualityDiminution ForSW, Nutrients	Ag			<a href="#">View WB Page</a>	<a href="#">View WB on EPA Water Map</a>
7, 8	IE_EA_G_028	Hill of Tara	Groundwater	Meath County Council	DWPA	Good	Good	Good	Good	2021 or earlier	Not at risk					<a href="#">View WB Page</a>	<a href="#">View WB on EPA Water Map</a>
7, 8, 9	IE_EA_G_031	Dunshaughlin	Groundwater	Meath County Council	DWPA	Good	Good	Good	Good	2021 or earlier	Not at risk					<a href="#">View WB Page</a>	<a href="#">View WB on EPA Water Map</a>
8	IE_EA_G_033	Hynestown	Groundwater	Fingal County Council	DWPA	Good	Good	Good	Good	2021 or earlier	Not at risk					<a href="#">View WB Page</a>	<a href="#">View WB on EPA Water Map</a>
8	IE_EA_G_039	Balbriggan	Groundwater	Fingal County Council	DWPA	Good	Good	Good	Good	2021 or earlier	Not at risk					<a href="#">View WB Page</a>	<a href="#">View WB on EPA Water Map</a>
8	IE_EA_G_043	Balrothery	Groundwater	Fingal County Council	DWPA	Good	Good	Good	Good	2021 or earlier	Not at risk					<a href="#">View WB Page</a>	<a href="#">View WB on EPA Water Map</a>
8	IE_EA_G_062	Industrial Facility (P0014-03)	Groundwater	Fingal County Council	DWPA	Poor	Poor	Poor	Good	2022-2027	At risk	Chemical, ChemicalQualityDiminution ForSW	Ind			<a href="#">View WB Page</a>	<a href="#">View WB on EPA Water Map</a>
8	IE_EA_G_088	Waste Facility (W0009-02)	Groundwater	Fingal County Council	DWPA; SAC	Good	Good	Good	Good	2021 or earlier	Not at risk					<a href="#">View WB Page</a>	<a href="#">View WB on EPA Water Map</a>
8	IE_EA_08B012200	BALLYBOGHIL_010	River	Fingal County Council	SAC; SPA;	Poor	Poor	Poor	Good	2022-2027	At risk	Nutrients, Organic	Ag, UWW	Rogerstown Estuary	LAWPRO, Restoration	<a href="#">View WB Page</a>	<a href="#">View WB on EPA Water Map</a>
8	IE_EA_08B020400	BROADMEADOW_010	River	Meath County Council		Poor	Poor	Poor	Good	2022-2027	At risk	Morphological, Nutrients, Organic	UWW, HYMO, UR, Ag	Broadmeadow	LAWPRO, Restoration	<a href="#">View WB Page</a>	<a href="#">View WB on EPA Water Map</a>
8	IE_EA_08B020600	BROADMEADOW_020	River	Meath County Council		Poor	Poor	Poor	Good	2022-2027	At risk	Morphological, Nutrients, Organic	HYMO, UR, UWW	Broadmeadow	LAWPRO, Restoration	<a href="#">View WB Page</a>	<a href="#">View WB on EPA Water Map</a>
8	IE_EA_08B020700	BROADMEADOW_030	River	Fingal County Council		Poor	Poor	Moderate	Good	2022-2027	At risk	Morphological, Nutrients, Organic	HYMO, DWTS, Ag	Broadmeadow	LAWPRO, Restoration	<a href="#">View WB Page</a>	<a href="#">View WB on EPA Water Map</a>
8	IE_EA_08B020800	BROADMEADOW_040	River	Fingal County Council	SAC; NSA;	Poor	Poor	Moderate	Good	2022-2027	At risk	Morphological, Nutrients	HYMO, Ag	Broadmeadow	LAWPRO, Restoration	<a href="#">View WB Page</a>	<a href="#">View WB on EPA Water Map</a>
8	IE_EA_08B031500	BALLOUGH STREAM_010	River	Fingal County Council		Unassigned	Poor	Moderate	Good	2022-2027	At risk	Nutrients	Ag	Rogerstown Estuary	LAWPRO, Restoration	<a href="#">View WB Page</a>	<a href="#">View WB on EPA Water Map</a>
8	IE_EA_08B031600	BALLOUGH STREAM_020	River	Fingal County Council	SAC;	Poor	Moderate	Moderate	Good	2022-2027	At risk	Sediment, Nutrients, Organic	Ag, UWW	Rogerstown Estuary	LAWPRO, Restoration	<a href="#">View WB Page</a>	<a href="#">View WB on EPA Water Map</a>
8	IE_EA_08B310940	BALCUNNIN_010	River	Fingal County Council		Unassigned	Moderate	Poor	Good	2022-2027	Review			Bracken	LAWPRO, Restoration	<a href="#">View WB Page</a>	<a href="#">View WB on EPA Water Map</a>
8	IE_EA_08B330980	BETAGHSTOWN_010	River	Meath County Council		Unassigned	Unassigned	Poor	Good	2022-2027	Review					<a href="#">View WB Page</a>	<a href="#">View WB on EPA Water Map</a>
8	IE_EA_08D010080	DELVIN_010	River	Fingal County Council		Poor	Poor	Poor	Good	2022-2027	At risk	Sediment, Morphological, Nutrients, Organic	DWTS, HYMO, Ag	Delvin	Fingal County Council, Restoration	<a href="#">View WB Page</a>	<a href="#">View WB on EPA Water Map</a>
8	IE_EA_08D010250	DELVIN_020	River	Fingal County Council		Moderate	Moderate	Moderate	Good	2022-2027	At risk	Sediment, Hydrological, Morphological, Nutrients, UnknownImpactType	Ag, HYMO, M+Q	Delvin	Fingal County Council, Restoration	<a href="#">View WB Page</a>	<a href="#">View WB on EPA Water Map</a>
8	IE_EA_08D010300	DELVIN_030	River	Meath County Council		Unassigned	Poor	Moderate	Good	2022-2027	At risk	Nutrients, Organic	Ind, DWTS, Ag	Delvin	Fingal County Council, Restoration	<a href="#">View WB Page</a>	<a href="#">View WB on EPA Water Map</a>
8	IE_EA_08D010400	DELVIN_040	River	Meath County Council		Poor	Poor	Poor	Good	2022-2027	At risk	Nutrients, Organic	Ag, UWW	Delvin	Fingal County Council, Restoration	<a href="#">View WB Page</a>	<a href="#">View WB on EPA Water Map</a>
8	IE_EA_08D030300	DUNSHAUGHLIN STREAM_010	River	Meath County Council		Good	Poor	Poor	Good	2022-2027	At risk	Sediment, Morphological, Nutrients	Ag, HYMO, DWTS	Broadmeadow	LAWPRO, Restoration	<a href="#">View WB Page</a>	<a href="#">View WB on EPA Water Map</a>
8	IE_EA_08F010500	FAIRYHOUSE STREAM_010	River	Meath County Council		Poor	Poor	Good	Good	2021 or earlier	Review			Broadmeadow	LAWPRO, Restoration	<a href="#">View WB Page</a>	<a href="#">View WB on EPA Water Map</a>
8	IE_EA_08F050930	FLEMINGSTOWN (Meath)_010	River	Meath County Council		Unassigned	Unassigned	Poor	Good	2022-2027	Review			Nanny	Meath County Council, Restoration	<a href="#">View WB Page</a>	<a href="#">View WB on EPA Water Map</a>

8	IE_EA_08H010200	HURLEY_010	River	Meath County Council		Moderate	Moderate	Moderate	Good	2022-2027	At risk	Morphological, Nutrients	Ag, HYMO	Hurley	Meath County Council, Restoration	<a href="#">View WB Page</a>	<a href="#">View WB on EPA Water Map</a>
8	IE_EA_08H010280	HURLEY_020	River	Meath County Council		Good	Good	Good	Good	2021 or earlier	Not at risk			Hurley	Meath County Council, Restoration	<a href="#">View WB Page</a>	<a href="#">View WB on EPA Water Map</a>
8	IE_EA_08H010400	HURLEY_030	River	Meath County Council		Moderate	Moderate	Moderate	Good	2022-2027	At risk	Morphological, Nutrients, Organic	Ag, HYMO, Was	Hurley	Meath County Council, Restoration	<a href="#">View WB Page</a>	<a href="#">View WB on EPA Water Map</a>
8	IE_EA_08M010900	MATT_010	River	Fingal County Council		Unassigned	Poor	Poor	Good	2022-2027	At risk	Morphological, Nutrients, Organic	HYMO, UR	Bracken	LAWPRO, Restoration	<a href="#">View WB Page</a>	<a href="#">View WB on EPA Water Map</a>
8	IE_EA_08M020100	MOSNEY_010	River	Meath County Council	SPA;	Poor	Poor	Poor	Good	2022-2027	At risk	Morphological, Chemical, Nutrients, Organic	DWTS, UR, Ag	Mosney	Meath County Council, Restoration	<a href="#">View WB Page</a>	<a href="#">View WB on EPA Water Map</a>
8	IE_EA_08M030500	MILL STREAM (SKERRIES)_010	River	Fingal County Council		Unassigned	Poor	Poor	Good	2022-2027	At risk	Nutrients, Organic	UR	Bracken	LAWPRO, Restoration	<a href="#">View WB Page</a>	<a href="#">View WB on EPA Water Map</a>
8	IE_EA_08N010110	NANNY (MEATH)_010	River	Meath County Council		Poor	Poor	Poor	Good	2022-2027	At risk	Morphological, Nutrients, Organic	Ag, DWTS, HYMO, UWW	Nanny	Meath County Council, Restoration	<a href="#">View WB Page</a>	<a href="#">View WB on EPA Water Map</a>
8	IE_EA_08N010280	NANNY (MEATH)_020	River	Meath County Council		Poor	Moderate	Poor	Good	2022-2027	At risk	Sediment, Hydrological, Morphological, Nutrients, Organic	UWW, Ag, HYMO	Nanny	Meath County Council, Restoration	<a href="#">View WB Page</a>	<a href="#">View WB on EPA Water Map</a>
8	IE_EA_08N010400	NANNY (MEATH)_030	River	Meath County Council		Unassigned	Moderate	Poor	Good	2022-2027	At risk	Morphological, Nutrients, Organic	HYMO, Ind, Ag	Nanny	Meath County Council, Restoration	<a href="#">View WB Page</a>	<a href="#">View WB on EPA Water Map</a>
8	IE_EA_08N010500	NANNY (MEATH)_040	River	Meath County Council		Moderate	Moderate	Poor	Good	2022-2027	At risk	Morphological, Nutrients, Organic	UWW, Ag, HYMO	Lower Nanny	LAWPRO, Restoration	<a href="#">View WB Page</a>	<a href="#">View WB on EPA Water Map</a>
8	IE_EA_08N010700	NANNY (MEATH)_050	River	Meath County Council	SPA;	Poor	Poor	Poor	Good	2022-2027	At risk	Morphological, Nutrients	Ag, HYMO	Lower Nanny	LAWPRO, Restoration	<a href="#">View WB Page</a>	<a href="#">View WB on EPA Water Map</a>
8	IE_EA_08P030930	PALMERSTOWN_010	River	Fingal County Council	SAC; SPA;	Unassigned	Poor	Poor	Good	2022-2027	Review			Bracken	LAWPRO, Restoration	<a href="#">View WB Page</a>	<a href="#">View WB on EPA Water Map</a>
8	IE_EA_08R010150	RATOATH STREAM_010	River	Meath County Council		Poor	Poor	Poor	Good	2022-2027	At risk	Morphological, Nutrients, Organic	Ag, DWTS, UR, HYMO	Broadmeadow	LAWPRO, Restoration	<a href="#">View WB Page</a>	<a href="#">View WB on EPA Water Map</a>
8	IE_EA_08T020700	TURVEY_010	River	Fingal County Council	SAC; SPA; NSA;	Unassigned	Poor	Poor	Good	2022-2027	At risk	Nutrients, Organic	UR, Ag	Rogerstown Estuary	LAWPRO, Restoration	<a href="#">View WB Page</a>	<a href="#">View WB on EPA Water Map</a>
8	IE_EA_08W010050	WARD_010	River	Meath County Council		Unassigned	Moderate	Poor	Good	2022-2027	Review			Ward	LAWPRO, Restoration	<a href="#">View WB Page</a>	<a href="#">View WB on EPA Water Map</a>
8	IE_EA_08W010070	WARD_020	River	Meath County Council		Poor	Moderate	Moderate	Good	2022-2027	At risk	Morphological, Nutrients, Organic	Ag, HYMO, UWW	Ward	LAWPRO, Restoration	<a href="#">View WB Page</a>	<a href="#">View WB on EPA Water Map</a>
8	IE_EA_08W010300	WARD_030	River	Fingal County Council		Good	Moderate	Moderate	Good	2022-2027	At risk	Nutrients, Organic	UWW, Other, Ag, UR	Ward	LAWPRO, Restoration	<a href="#">View WB Page</a>	<a href="#">View WB on EPA Water Map</a>
8	IE_EA_08W010610	WARD_040	River	Fingal County Council		Poor	Poor	Moderate	Good	2022-2027	At risk	Morphological, UnknownImpactType	HYMO, UR	Ward	LAWPRO, Restoration	<a href="#">View WB Page</a>	<a href="#">View WB on EPA Water Map</a>
8	IE_EA_030_0100	Nanny Estuary	Transitional	Meath County Council	SPA;	Unassigned	Moderate	Moderate	Good	2022-2027	Review					<a href="#">View WB Page</a>	<a href="#">View WB on EPA Water Map</a>
8	IE_EA_050_0100	Rogerstown Estuary	Transitional	Fingal County Council	SAC; SPA;	Bad	Bad	Poor	Good	2022-2027	At risk	Nutrients	Ag, DWTS	Rogerstown Estuary	LAWPRO, Restoration	<a href="#">View WB Page</a>	<a href="#">View WB on EPA Water Map</a>
8, 9	IE_EA_060_0100	Broadmeadow Water	Transitional	Fingal County Council	SAC; SPA; NSA;	Moderate	Poor	Moderate	Good	2022-2027	At risk	Nutrients, Organic	UWW, DWTS			<a href="#">View WB Page</a>	<a href="#">View WB on EPA Water Map</a>