



Cycle 3

HA 06 Newry, Fane, Glyde and Dee Catchment Report, May 2024

Introduction

This report provides an overview of the water quality in the Newry, Fane, Glyde and Dee Catchment Report Catchment and the pressures impacting on water quality. This report is based on data up to 2021. The latest water quality data, dashboards and maps throughout this report are available on catchments.ie and [EPA Water Map](https://www.epa.ie/water/water_quality/water_quality_maps/).

Introduction

Water Quality Summary

Water Quality Changes

WFD Risk

Significant Pressures

Action

Summary Information

The Newry, Fane, Glyde and Dee catchment includes the area drained by the Newry, Fane, Glyde and Dee rivers, and by all streams entering tidal water between Murlough Upper and The Haven, Co. Louth. This is a cross border catchment with a surface area of 2,125 km², 1390 km² of which is in the RoI. The largest urban centre is Dundalk. The other main urban centres are Carrickmacross, Ardee, Kingscourt, Dunleer and Castleblaney.

The Newry, Fane, Glyde and Dee Catchment is divided into 15 subcatchments and has 91 surface water bodies and 19 groundwater bodies.

[View the Newry, Fane, Glyde and Dee Catchment on the EPA Water Map](#)

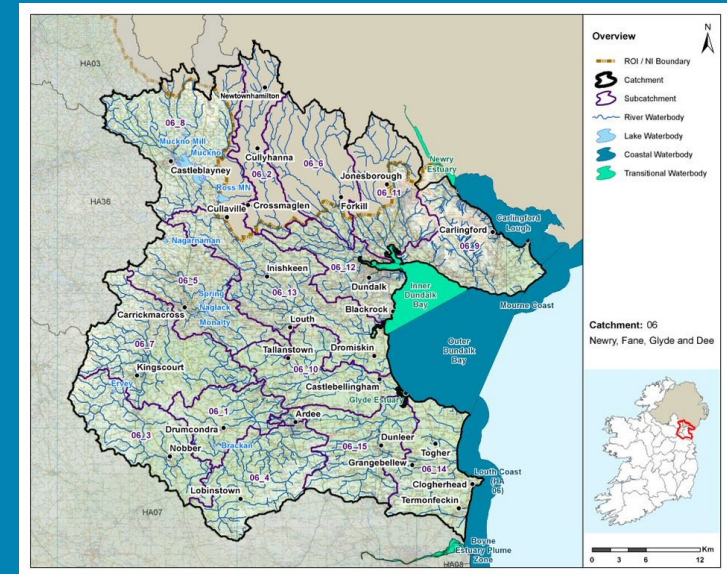
Previous Catchment Assessments

Previous catchment assessments, which provide additional historic context and information, are archived on catchments.ie:

- [Cycle 2 Catchment Assessments – published September 2018](#)
- [Cycle 3 Draft Catchment Assessments – published September 2021](#)

Online Dashboards

Links to online dashboards are provided in this report – these numbers may vary from those in this document as time progress and the online dashboards are updated based on the latest data and scientific assessments.



Overview of Subcatchments in the Newry, Fane, Glyde and Dee Catchment

Water Quality Summary

The dashboard below provides a breakdown of water quality status for surface and groundwater bodies in the Newry, Fane, Glyde and Dee Catchment.

A total of 16 (18%) of surface waterbodies were at Good or High Ecological Status in the 2016-2021 monitoring period. Eighty-nine percent of groundwater bodies were at Good status.

**Go to EPA Water Maps
for WFD Status**

[EPA Water Map](#)

Introduction

Water Quality
Summary

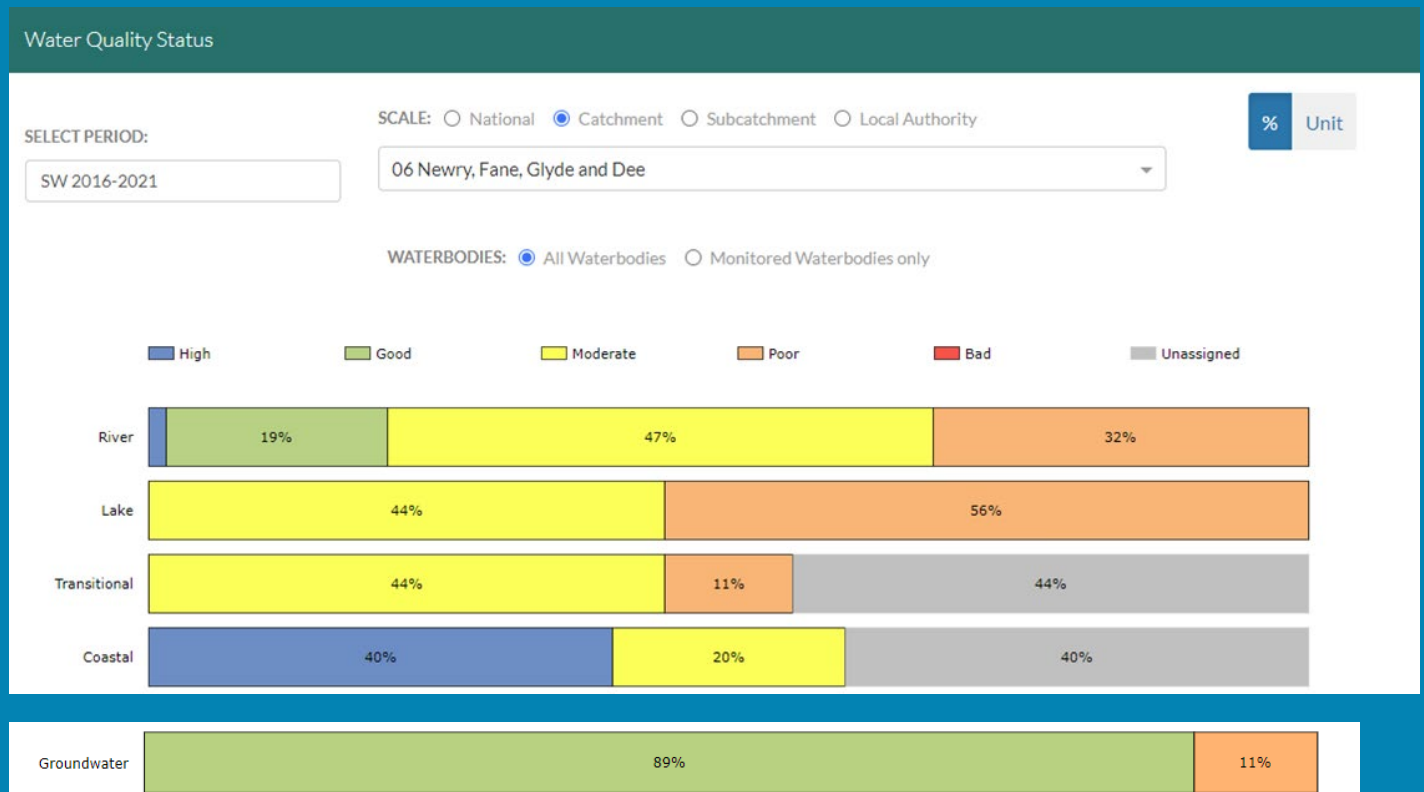
Water Quality
Changes

WFD Risk

Significant
Pressures

Action

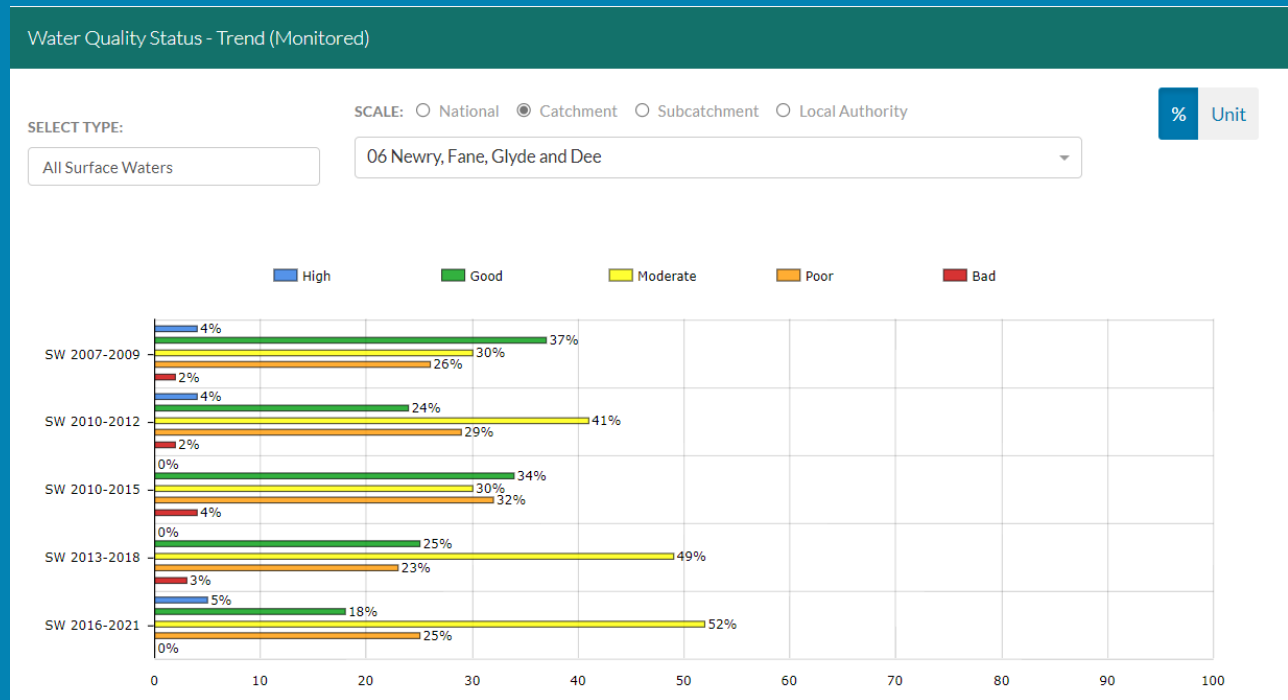
Summary
Information



Water quality status 2016-2021 for the Newry, Fane, Glyde and Dee Catchment.
View Online Dashboard: <https://www.catchments.ie/data/#/dashboard/waterquality>

Water Quality Changes

Below illustrates the changes in ecological status in monitored surface waterbodies over the last five monitoring cycles in the Newry, Fane, Glyde and Dee Catchment. Nationally while there have been improvements in some waterbodies, these have been offset by declines elsewhere.



Ecological status trends for monitored surface waterbodies over the last five monitoring cycles in the Newry, Fane, Glyde and Dee Catchment. **View online dashboard:** <https://www.catchments.ie/data/#/dashboard/waterquality>

A total of 33 (30%) waterbodies are currently meeting their environmental objective of Good Ecological Status.

	Total	Achieving Environmental Objectives (2016-2021)	High Status Environmental Objectives Waterbodies	Achieving High Status Environmental Objectives (2016-2021)
Rivers	68	14 (21%)	-	N/A
Lakes	9	0 (0%)	-	N/A
Transitional	9	0 (0%)	-	N/A
Coastal	5	2 (40%)	-	N/A
Groundwater	19	17 (90%)	-	N/A

Introduction

Water Quality Summary

Water Quality Changes

WFD Risk

Significant Pressures

Action

Summary Information

WFD Risk

A total of 49 (45%) waterbodies are *At Risk* of not meeting their environmental objective in the Newry, Fane, Glyde and Dee Catchment, while 36 (33%) are under *Review* and 25 (23%) are *Not At Risk*.

Go to [EPA Water Map](#) to see *WFD Risk for this catchment*

Introduction

Water Quality Summary

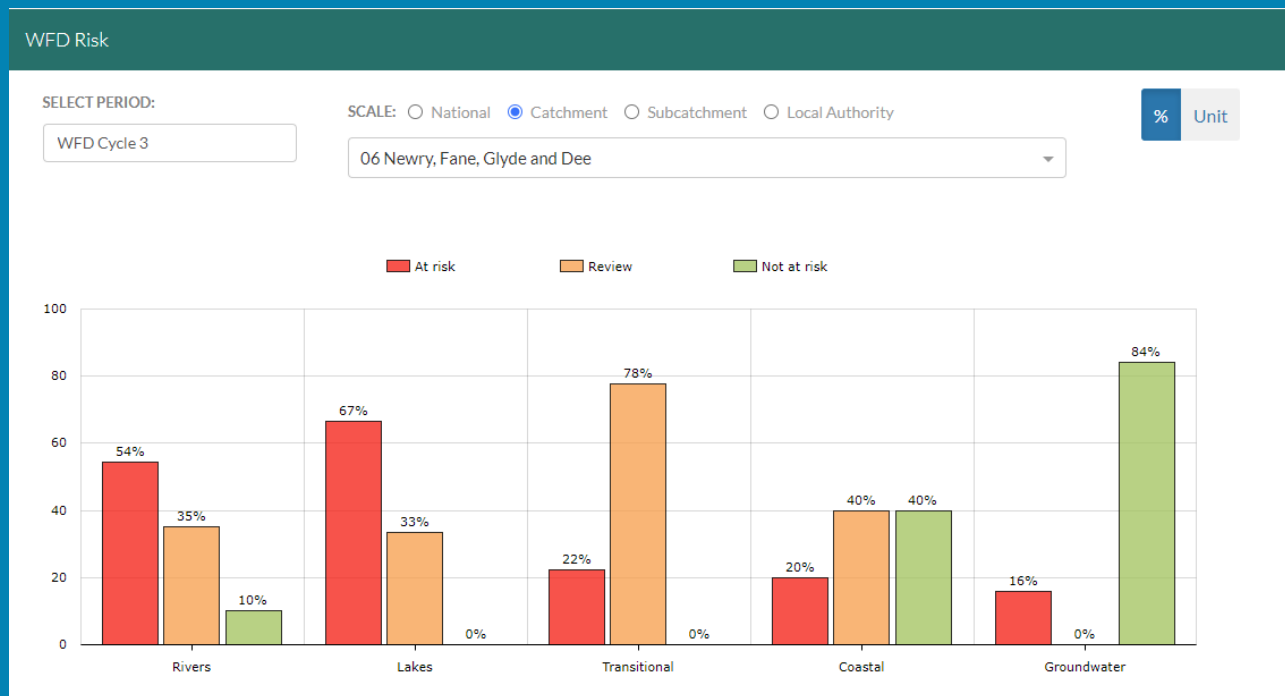
Water Quality Changes

WFD Risk

Significant Pressures

Action

Summary Information



WFD Risk for the Newry, Fane, Glyde and Dee Catchment based on 2016-2021 data.
View Online Dashboard: <https://www.catchments.ie/data/#/dashboard/waterquality>

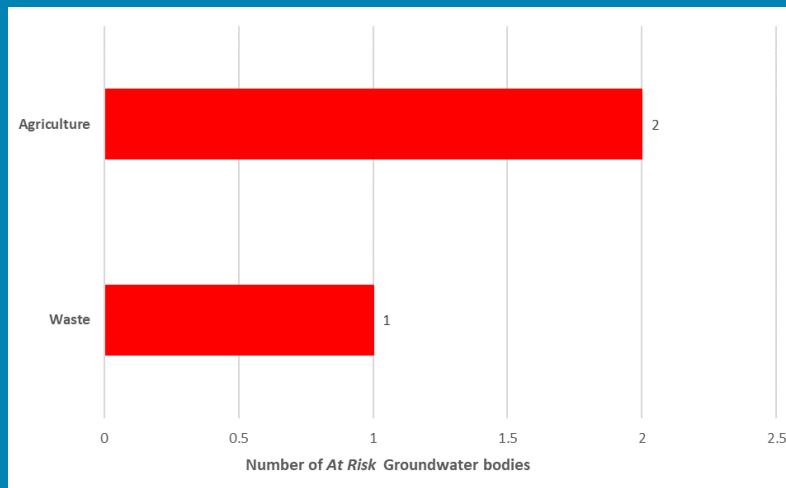
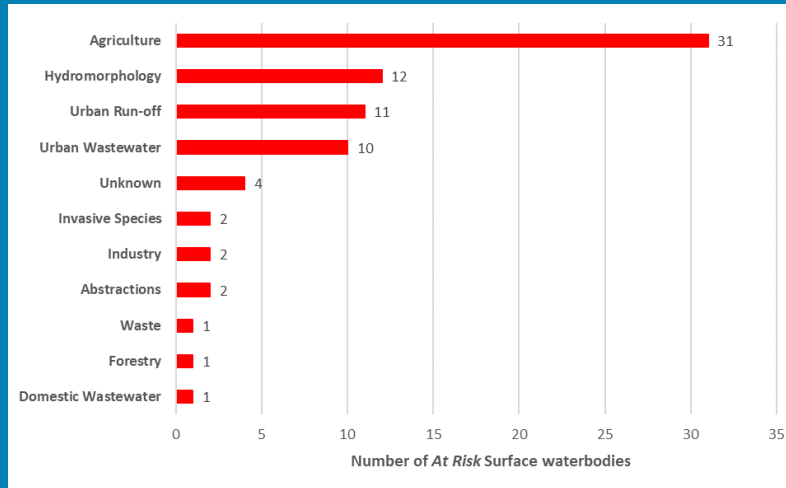
There is currently one heavily modified water body (HMWB) in the Newry, Fane, Glyde and Dee catchment, Newry Estuary. It is currently under Review.

There are no artificial waterbodies in the Newry, Fane, Glyde and Dee Catchment.

The [EPA's characterisation outcome report](#) has more information on WFD Risk

Significant Pressures driving risk

Significant pressure types impacting the 46 *At Risk* surface waterbodies and three groundwater bodies are broken down in the figures below.



The issues driven by these pressures are mainly nutrient pollution, organic pollution and altered morphological (habitat) impacts for surface water and nutrient pollution and chemical quality diminution for surface water for groundwaters. For more information, see <https://www.catchments.ie/data/#/dashboard/pressure?k=i351zs>.

Go to the Summary Information section to get significant pressure and issue data for At Risk waterbodies within the Newry, Fane, Glyde and Dee Catchment.

Click [here](#) for more information on significant pressures

Introduction

Water Quality Summary

Water Quality Changes

WFD Risk

Significant Pressures

Action

Summary Information

Priority Areas for Action

A number of waterbodies have been prioritised through the selection of Areas for Action. There were four Priority Areas for Action identified for the second river basin management planning cycle in the Newry, Fane, Glyde and Dee Catchment. This has increased to a total of 12 Areas for Restoration and two Catchment Projects for the third cycle. ***Go to the summary information section to get Area for Action information for waterbodies within the Newry, Fane, Glyde and Dee Catchment.***

Introduction

Water Quality
Summary

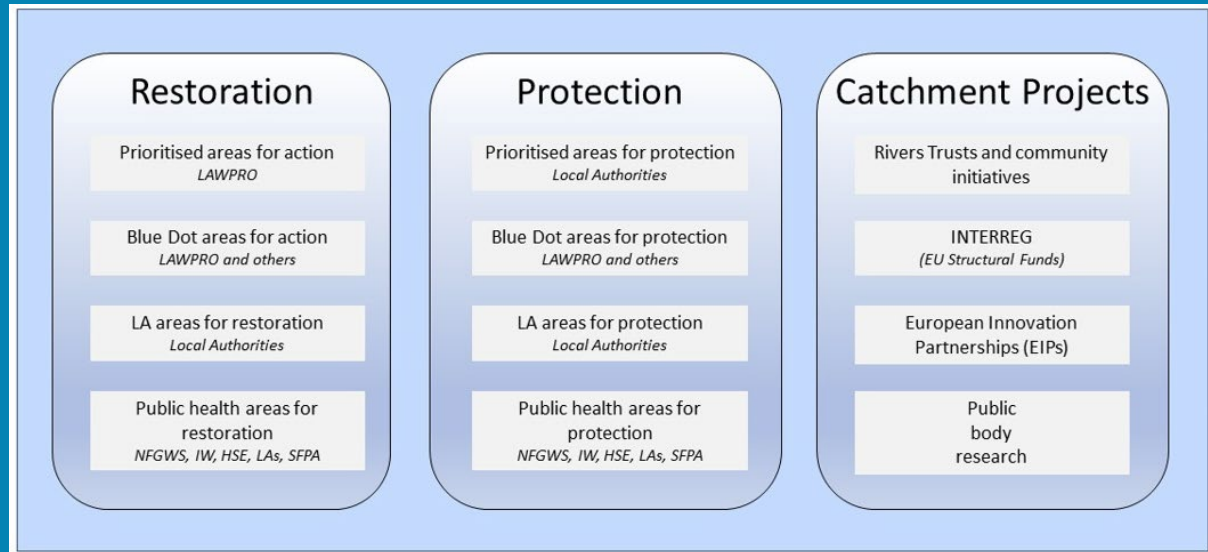
Water Quality
Changes

WFD Risk

Significant
Pressures

Action

Summary
Information



Types of Areas for Action under the third cycle River Basin Management Plan

- View the current progress of Areas for Action and Summary Reports completed by LAWPRO, on catchments.ie and the EPA Water Map:
 - <https://www.catchments.ie/data/#/areaforaction>
 - https://gis.epa.ie/EPAMaps/default?easting=?&northing=?&lid=EPA:WFD_AreasForAction
- LAWPRO have also published detailed desktop studies on Prioritised Areas for Action (PAAs) which are available their website: <https://lawaters.ie/desktop-studies/>
- Information on Areas for Action for the second cycle is available in Cycle 2 Catchment Assessments which have been archived on catchments.ie: <https://www.catchments.ie/download/cycle-2-catchment-assessments-published-september-2018/>

Summary information for all waterbodies in the Newry, Fane, Glyde and Dee Catchment

The next page provides a table with a breakdown of key information for all waterbodies in this catchment. The key is provided below. Additional information for each waterbody is available on <https://www.catchments.ie/data>, including a breakdown of status, a monitoring schedule for monitored waterbodies and downloadable chemistry results, where available.

Introduction

Water Quality Summary

Water Quality Changes

WFD Risk

Significant Pressures

Action

Summary Information

<p>Protected Area categories</p>	<p>BW: Bathing Water DW: Drinking Water Fish: Salmonid Waters NSA: Nutrient Sensitive Areas SAC: Special Area of Conservation, Natura 2000 (water dependent habitats and species) SF: Shellfish Area SPA: Special Area of Protection, Natura 2000 (water dependent habitat and species)</p>
<p>Significant pressure* types categories</p> <p><i>* For At Risk waterbodies only</i></p>	<p>Ab: Abstractions Ag: Agriculture Aq: Aquaculture At: Atmospheric DWW: Domestic Wastewater For: Forestry HPS: Historically polluted sites HYMO: Hydromorphology Ind: Industry IS: Invasive Species M+Q: Mines and Quarries Peat: Peat Drainage and Extraction UR: Urban Run-Off UWW: Urban Wastewater Was: Waste WT: Water Treatment</p>

Catchment Code	Waterbody (WB) Code	WB Name	WB Type	Local Authority	Protected Area	Status 10-15	Status 13-18	Status 16-21	Environmental Objective	Environmental Objective Date	WFD Risk 16-21	Significant Issue(s)	Significant Pressure(s)	Area for Action (AFA)	AFA (lead, type)	Link to WB page on catchments.ie	Link to WB on EPA Water Map
6	GBNII6NB020	Mourne Coast	Coastal	N.A.	SAC; SPA; SF;	Unassigned	Unassigned	Unassigned	Good	Unknown	Review					View WB Page	View WB on EPA Water Map
6	GBNII6NB030	Carlingford Lough	Coastal	N.A.	SAC; SPA; SF;	Unassigned	Moderate	Unassigned	Good	Unknown	Review					View WB Page	View WB on EPA Water Map
6, 7	IE_EA_010_0000	Boyne Estuary Plume Zone	Coastal	Meath County Council	SAC; SPA; NSA;	Good	Moderate	Moderate	Good	2022-2027	At risk	Nutrients	Unknown, UR			View WB Page	View WB on EPA Water Map
6, 7	IE_NB_025_0000	Louth Coast (HA 06)	Coastal	Louth County Council	BW; SAC; SPA; SF;	Unassigned	High	High	Good	2021 or earlier	Not at risk					View WB Page	View WB on EPA Water Map
6	IE_NB_040_0000	Outer Dundalk Bay	Coastal	Louth County Council	BW; SAC; SPA; SF; NSA;	Good	Good	High	Good	2021 or earlier	Not at risk					View WB Page	View WB on EPA Water Map
6	GBNI4NB009	Newry	Groundwater	Louth County Council	DWPA; SAC	Good	Poor	Good	Good	2021 or earlier	Not at risk					View WB Page	View WB on EPA Water Map
26F, 36, 6, 7	IE_EA_G_006	Bailieborough	Groundwater	Cavan County Council	DWPA; SAC	Good	Good	Good	Good	2021 or earlier	Not at risk					View WB Page	View WB on EPA Water Map
6, 7	IE_EA_G_010	Wilkinstown	Groundwater	Meath County Council	DWPA; SAC	Good	Good	Poor	Good	2022-2027	At risk	ChemicalQualityDiminution ForSW, Nutrients	Ag			View WB Page	View WB on EPA Water Map
6, 7	IE_EA_G_015	Moynalty	Groundwater	Meath County Council	DWPA; SAC	Good	Good	Good	Good	2021 or earlier	Not at risk					View WB Page	View WB on EPA Water Map
6, 7, 8	IE_EA_G_025	Drogheda	Groundwater	Louth County Council	DWPA; SAC	Good	Good	Good	Good	2021 or earlier	At risk	ChemicalQualityDiminution ForSW, Nutrients	Ag			View WB Page	View WB on EPA Water Map
6	IE_NB_G_015	Dundalk	Groundwater	Louth County Council	DWPA; SAC	Good	Good	Good	Good	2021 or earlier	Not at risk					View WB Page	View WB on EPA Water Map
6	IE_NB_G_016	Carrickmacross	Groundwater	Monaghan County Council	DWPA	Good	Good	Good	Good	2021 or earlier	Not at risk					View WB Page	View WB on EPA Water Map
6	IE_NB_G_017	Kingscourt	Groundwater	Cavan County Council	DWPA	Good	Good	Good	Good	2021 or earlier	Not at risk					View WB Page	View WB on EPA Water Map
6, 7	IE_NB_G_018	Ardee	Groundwater	Meath County Council	DWPA	Good	Good	Good	Good	2021 or earlier	Not at risk					View WB Page	View WB on EPA Water Map
6	IE_NB_G_021	Williamstown Gravels	Groundwater	Louth County Council	DWPA	Good	Good	Good	Good	2021 or earlier	Not at risk					View WB Page	View WB on EPA Water Map
6	IE_NB_G_022	Dromiskin Gravels	Groundwater	Louth County Council	DWPA; SAC	Good	Good	Good	Good	2021 or earlier	Not at risk					View WB Page	View WB on EPA Water Map
6	IE_NB_G_023	Clogher Head Gravels	Groundwater	Louth County Council	DWPA	Good	Good	Good	Good	2021 or earlier	Not at risk					View WB Page	View WB on EPA Water Map
6	IE_NB_G_024	Dundalk Gravels	Groundwater	Louth County Council	DWPA; SAC	Good	Good	Good	Good	2021 or earlier	Not at risk					View WB Page	View WB on EPA Water Map
3, 6	IE_NB_G_026	Waste Facility (W0020-01)	Groundwater	Monaghan County Council	DWPA	Poor	Poor	Poor	Good	2022-2027	At risk	ChemicalQualityDiminution ForSW, Nutrients	Was			View WB Page	View WB on EPA Water Map
6	IE_NB_G_031	Dundalk Gravels	Groundwater	Louth County Council	DWPA; SAC	Good	Good	Good	Good	2021 or earlier	Not at risk					View WB Page	View WB on EPA Water Map
6	IE_NB_G_044	Waste Facility (W0034-03)	Groundwater	Louth County Council	DWPA; SAC	Good	Good	Good	Good	2021 or earlier	Not at risk					View WB Page	View WB on EPA Water Map
26C, 26F, 3, 36, 6, 7	IE_NW_G_061	Cavan	Groundwater	Cavan County Council	DWPA; SAC	Good	Good	Good	Good	2021 or earlier	Not at risk					View WB Page	View WB on EPA Water Map
3, 36, 6	IEGBNI_NB_G_011	Keady	Groundwater	Monaghan County Council	DWPA	Good	Good	Good	Good	2021 or earlier	Not at risk					View WB Page	View WB on EPA Water Map
3, 36, 6, 7	IEGBNI_NB_G_019	Louth	Groundwater	Louth County Council	DWPA; SAC	Good	Good	Good	Good	2021 or earlier	Not at risk					View WB Page	View WB on EPA Water Map
6	IE_NB_06_198	Spring	Lake	Monaghan County Council		Good	Good	Moderate	Good	2022-2027	At risk	Nutrients, Organic	Ag	Glyde-Proules	LAWPRO, Restoration	View WB Page	View WB on EPA Water Map
6	IE_NB_06_209	Brackan	Lake	Meath County Council	DWPA;	Moderate	Moderate	Moderate	Good	2022-2027	At risk	Hydrological, Nutrients	Ab, Ag	Dee	Meath County Council, Restoration	View WB Page	View WB on EPA Water Map
6	IE_NB_06_234	Monalty	Lake	Monaghan County Council	DWPA; NSA;	Bad	Poor	Moderate	Good	2022-2027	At risk	UnknownImpactType	IS	Glyde-Proules	LAWPRO, Restoration	View WB Page	View WB on EPA Water Map
6	IE_NB_06_244	Muckno Mill	Lake	Monaghan County Council	DWPA;	Unassigned	Unassigned	Poor	Good	2022-2027	Review					View WB Page	View WB on EPA Water Map
6	IE_NB_06_54	Ervey	Lake	Meath County Council		Unassigned	Moderate	Poor	Good	2022-2027	At risk	Nutrients, Organic	Ag	Dee	Meath County Council, Restoration	View WB Page	View WB on EPA Water Map
6	IE_NB_06_55	Naglack	Lake	Monaghan County Council		Bad	Bad	Poor	Good	2022-2027	At risk	Nutrients, Organic, UnknownImpactType	IS, UWW	Glyde-Proules	LAWPRO, Restoration	View WB Page	View WB on EPA Water Map
6	IE_NB_06_56	Muckno	Lake	Monaghan County Council	NSA;	Poor	Bad	Moderate	Good	2022-2027	At risk	Nutrients, Organic	UWW			View WB Page	View WB on EPA Water Map
6	IE_NB_36_383	Nagarnaman	Lake	Monaghan County Council	DWPA;	Unassigned	Moderate	Poor	Good	2022-2027	Review			Glyde-Proules	LAWPRO, Restoration	View WB Page	View WB on EPA Water Map
6	UKGBNI3NB0020	Ross MN	Lake	N.A.		Unassigned	Unassigned	Poor	Good	2022-2027	Review					View WB Page	View WB on EPA Water Map
6	IE_NB_06A011000	ANNAHALE STREAM_010	River	Monaghan County Council		Unassigned	Poor	Poor	Good	2022-2027	At risk	Sediment, Morphological, Nutrients	Ag, HYMO			View WB Page	View WB on EPA Water Map
6	IE_NB_06B010100	BIG (LOUTH)_010	River	Louth County Council	SAC;	Good	Good	Moderate	Good	2022-2027	At risk	Hydrological, Morphological	HYMO			View WB Page	View WB on EPA Water Map
6	IE_NB_06B010300	BIG (LOUTH)_020	River	Louth County Council	DWPA; SAC;	Moderate	Moderate	Moderate	Good	2022-2027	At risk	Nutrients	Ind			View WB Page	View WB on EPA Water Map
6	IE_NB_06B280720	BAWN_010	River	Louth County Council	SPA;	Unassigned	Unassigned	Poor	Good	2022-2027	Review			Glyde-Proules	LAWPRO, Restoration	View WB Page	View WB on EPA Water Map
6	IE_NB_06B460680	BALLYNAMAGHERY_010	River	Louth County Council	SAC;	Unassigned	Moderate	Moderate	Good	2022-2027	Review					View WB Page	View WB on EPA Water Map
6	IE_NB_06C010200	CASTLETOWN_020	River	Louth County Council		Moderate	Good	Moderate	Good	2022-2027	At risk	Nutrients	Unknown, UR	Castletown	LAWPRO, Restoration	View WB Page	View WB on EPA Water Map

6	IE_NB_06C010310	CASTLETOWN_030	River	Louth County Council	SPA; NSA;	Moderate	Moderate	Moderate	Good	2022-2027	At risk	Nutrients	Ag, UR	Castletown	LAWPRO, Restoration	View WB Page	View WB on EPA Water Map
6	IE_NB_06C370890	CARRICKROBIN_010	River	Louth County Council		Unassigned	Good	Moderate	Good	2022-2027	Review					View WB Page	View WB on EPA Water Map
6	IE_NB_06C620800	Carlingford_010	River	Louth County Council	SAC;	Unassigned	Good	Moderate	Good	2022-2027	Review					View WB Page	View WB on EPA Water Map
6	IE_NB_06D010016	DEE_010	River	Cavan County Council		Good	Good	Good	Good	2021 or earlier	Not at risk			Dee (Cavan)	Cavan County Council, Restoration	View WB Page	View WB on EPA Water Map
6	IE_NB_06D010035	DEE_020	River	Meath County Council		Poor	Moderate	Good	Good	2021 or earlier	Not at risk			Dee	Meath County Council, Restoration	View WB Page	View WB on EPA Water Map
6	IE_NB_06D010150	DEE_030	River	Meath County Council		Poor	Moderate	Moderate	Good	2022-2027	At risk	Sediment, Morphological, Organic	HYMO, Ag	Dee	Meath County Council, Restoration	View WB Page	View WB on EPA Water Map
6	IE_NB_06D010360	DEE_040	River	Meath County Council		Moderate	Good	Good	Good	2021 or earlier	Not at risk			Dee	Meath County Council, Restoration	View WB Page	View WB on EPA Water Map
6	IE_NB_06D010600	DEE_050	River	Meath County Council		Moderate	Moderate	Poor	Good	2022-2027	At risk	Hydrological, Morphological, Organic	Ag, HYMO	Dee	Meath County Council, Restoration	View WB Page	View WB on EPA Water Map
6	IE_NB_06D010670	DEE_060	River	Meath County Council	DWPA;	Poor	Poor	Moderate	Good	2022-2027	At risk	Hydrological, Morphological, Nutrients, Organic	HYMO, Ag	Dee	Meath County Council, Restoration	View WB Page	View WB on EPA Water Map
6	IE_NB_06D010710	DEE_070	River	Louth County Council		Poor	Moderate	Good	Good	2021 or earlier	Not at risk			Dee (Louth)	Louth County Council, Restoration	View WB Page	View WB on EPA Water Map
6	IE_NB_06D011000	DEE_080	River	Louth County Council		Poor	Moderate	Moderate	Good	2022-2027	At risk	Morphological, Nutrients, Organic	HYMO, Ag	Dee (Louth)	Louth County Council, Restoration	View WB Page	View WB on EPA Water Map
6	IE_NB_06D011100	DEE_090	River	Louth County Council	DWPA;	Poor	Poor	Poor	Good	2022-2027	At risk	Hydrological, Morphological, Nutrients, Organic	Ag, HYMO	Dee (Louth)	Louth County Council, Restoration	View WB Page	View WB on EPA Water Map
6	IE_NB_06D470300	DRUMMEENAGH_010	River	Louth County Council	SAC; SPA;	Unassigned	Poor	Poor	Good	2022-2027	Review					View WB Page	View WB on EPA Water Map
6	IE_NB_06F010200	FANE_010	River	Monaghan County Council		Poor	Poor	Poor	Good	2022-2027	At risk	Nutrients, Organic	DWTS, Ag, Ind			View WB Page	View WB on EPA Water Map
6	IE_NB_06F010900	FANE_050	River	Louth County Council	DWPA;	Good	Good	Good	Good	2021 or earlier	Review					View WB Page	View WB on EPA Water Map
6	IE_NB_06F010950	FANE_060	River	Louth County Council		Unassigned	Moderate	Moderate	Good	2022-2027	At risk	Nutrients, Organic	Ag			View WB Page	View WB on EPA Water Map
6	IE_NB_06F020700	FLURRY_030	River	Louth County Council	SAC;	Good	Poor	Moderate	Good	2022-2027	Review			Flurry Ballymascanlan	LAWPRO, Restoration	View WB Page	View WB on EPA Water Map
6	IE_NB_06G020070	GLYDE_010	River	Cavan County Council		Good	Good	Good	Good	2021 or earlier	At risk	Morphological, Nutrients, Organic	Ag, UR, UWW	Glyde-Proules	LAWPRO, Restoration	View WB Page	View WB on EPA Water Map
6	IE_NB_06G020100	GLYDE_020	River	Monaghan County Council		Good	Good	Good	Good	2021 or earlier	Not at risk			Glyde-Proules	LAWPRO, Restoration	View WB Page	View WB on EPA Water Map
6	IE_NB_06G020400	GLYDE_030	River	Monaghan County Council		Good	Good	Good	Good	2021 or earlier	Review			Glyde-Proules	LAWPRO, Restoration	View WB Page	View WB on EPA Water Map
6	IE_NB_06G020500	GLYDE_040	River	Monaghan County Council		Good	Good	Good	Good	2021 or earlier	Review			Glyde-Proules	LAWPRO, Restoration	View WB Page	View WB on EPA Water Map
6	IE_NB_06G020700	GLYDE_050	River	Louth County Council	DWPA; NSA;	Moderate	Moderate	Moderate	Good	2022-2027	At risk	Sediment, Nutrients	Ag	Glyde-Proules	LAWPRO, Restoration	View WB Page	View WB on EPA Water Map
6	IE_NB_06G020900	GLYDE_060	River	Louth County Council		Good	Good	Moderate	Good	2022-2027	At risk	Sediment, Nutrients, Organic	Ag, Unknown	Glyde-Proules	LAWPRO, Restoration	View WB Page	View WB on EPA Water Map
6	IE_NB_06G021230	GLYDE_070	River	Louth County Council	SPA;	Moderate	Moderate	Moderate	Good	2022-2027	At risk	Nutrients, Organic	Ag, UR	Glyde-Proules	LAWPRO, Restoration	View WB Page	View WB on EPA Water Map
6	IE_NB_06G180630	GREENORE_010	River	Louth County Council	SAC; SPA;	Unassigned	Moderate	Poor	Good	2022-2027	Review					View WB Page	View WB on EPA Water Map
6	IE_NB_06H080570	HAGGARDSTOWN_010	River	Louth County Council	SAC; SPA; NSA;	Unassigned	Good	Poor	Good	2022-2027	Review					View WB Page	View WB on EPA Water Map
6	IE_NB_06J020630	JOHNSTOWN (Louth)_010	River	Louth County Council	SPA;	Unassigned	Poor	Moderate	Good	2022-2027	Review					View WB Page	View WB on EPA Water Map
6	IE_NB_06K010100	KILLARY WATER_010	River	Meath County Council		Moderate	Good	Moderate	Good	2022-2027	At risk	Nutrients	Ag, UWW	Killary Water	Meath County Council, Restoration	View WB Page	View WB on EPA Water Map
6	IE_NB_06K010500	KILLARY WATER_020	River	Meath County Council		Poor	Poor	Poor	Good	2022-2027	At risk	Hydrological, Morphological, Nutrients, Organic	Ag, HYMO	Killary Water	Meath County Council, Restoration	View WB Page	View WB on EPA Water Map
6	IE_NB_06K040055	KILMAINHAM (DEE)_010	River	Meath County Council		Good	Moderate	Good	Good	2021 or earlier	Not at risk			Upper Kilmainham (Dee)	Meath County Council, Restoration	View WB Page	View WB on EPA Water Map
6	IE_NB_06K040100	KILMAINHAM (DEE)_020	River	Meath County Council		Moderate	Moderate	High	Good	2021 or earlier	Not at risk					View WB Page	View WB on EPA Water Map
6	IE_NB_06K210970	KILLINCOOLE_010	River	Louth County Council		Unassigned	Moderate	Poor	Good	2022-2027	Review					View WB Page	View WB on EPA Water Map
6	IE_NB_06K250770	KNOCKNAGORAN_010	River	Louth County Council	SAC;	Unassigned	Good	Good	Good	2021 or earlier	Review					View WB Page	View WB on EPA Water Map
6	IE_NB_06M170410	MAPASTOWN_010	River	Louth County Council		Unassigned	Moderate	Poor	Good	2022-2027	Review			Glyde-Proules	LAWPRO, Restoration	View WB Page	View WB on EPA Water Map
6	IE_NB_06M460800	MOYNAGH_040	River	Meath County Council		Unassigned	Poor	Poor	Good	2022-2027	At risk	Morphological, Nutrients, Organic	Ag, HYMO, UWW	Dee	Meath County Council, Restoration	View WB Page	View WB on EPA Water Map
6	IE_NB_06P010110	PROULES_010	River	Monaghan County Council	NSA;	Good	Moderate	Moderate	Good	2022-2027	At risk	LitterAnImpactUnderMSFD, Nutrients	Was, Ag, UR	Glyde-Proules	LAWPRO, Restoration	View WB Page	View WB on EPA Water Map
6	IE_NB_06P010300	PROULES_020	River	Monaghan County Council	NSA;	Poor	Poor	Poor	Good	2022-2027	At risk	Nutrients, Organic	UWW	Glyde-Proules	LAWPRO, Restoration	View WB Page	View WB on EPA Water Map
6	IE_NB_06P010600	PROULES_030	River	Monaghan County Council	NSA;	Poor	Moderate	Moderate	Good	2022-2027	Review			Glyde-Proules	LAWPRO, Restoration	View WB Page	View WB on EPA Water Map
6	IE_NB_06R010300	RAMPARTS_010	River	Louth County Council	SAC; SPA; NSA;	Unassigned	Moderate	Poor	Good	2022-2027	Review					View WB Page	View WB on EPA Water Map
6	IE_NB_06R030260	ROSSDREENAGH STREAM_010	River	Monaghan County Council		Moderate	Moderate	Moderate	Good	2022-2027	At risk	Hydrological, Morphological	HYMO	Glyde-Proules	LAWPRO, Restoration	View WB Page	View WB on EPA Water Map

6	IE_NB_06R030400	ROSSDREENAGH STREAM_020	River	Monaghan County Council		Moderate	Moderate	Moderate	Good	2022-2027	At risk	Hydrological, Morphological, Nutrients	Ag, HYMO	Glyde-Proules	LAWPRO, Restoration	View WB Page	View WB on EPA Water Map
6	IE_NB_06R330950	ROCKMARSHALL_010	River	Louth County Council	SAC; SPA; NSA;	Unassigned	Unassigned	Good	Good	2021 or earlier	Review					View WB Page	View WB on EPA Water Map
6	IE_NB_06S160790	SLIEVEBOY_010	River	Louth County Council		Unassigned	Moderate	Moderate	Good	2022-2027	Review			Grangebellew GWS	NFGWS, Restoration	View WB Page	View WB on EPA Water Map
6	IE_NB_06T010250	TERMONFECKIN_010	River	Louth County Council		Unassigned	Poor	Poor	Good	2022-2027	At risk	Nutrients	Ag	Termonfeckin	LAWPRO, Restoration	View WB Page	View WB on EPA Water Map
6	IE_NB_06T010400	TERMONFECKIN_020	River	Louth County Council		Poor	Moderate	Moderate	Good	2022-2027	At risk	Acidification, Nutrients	Ag	Termonfeckin	LAWPRO, Restoration	View WB Page	View WB on EPA Water Map
6	IE_NB_06W010100	WHITE (LOUTH)_010	River	Louth County Council		Good	Moderate	Moderate	Good	2022-2027	At risk	Nutrients, Organic	Ag	White River (Louth)	LAWPRO, Restoration	View WB Page	View WB on EPA Water Map
6	IE_NB_06W010400	WHITE (LOUTH)_020	River	Louth County Council		Poor	Moderate	Moderate	Good	2022-2027	At risk	Nutrients, Organic	Ag, UWW	White River (Louth)	LAWPRO, Restoration	View WB Page	View WB on EPA Water Map
6	IE_NB_06W010500	WHITE (LOUTH)_030	River	Louth County Council		Poor	Moderate	Poor	Good	2022-2027	At risk	Morphological, Nutrients	UWW, Ag, HYMO	White River (Louth)	LAWPRO, Restoration	View WB Page	View WB on EPA Water Map
6	IE_NB_06W040900	WHITECROSS_010	River	Louth County Council		Unassigned	Moderate	Poor	Good	2022-2027	Review			Glyde-Proules	LAWPRO, Restoration	View WB Page	View WB on EPA Water Map
6	UKGBNI1NB060602038	BALLYMASCANLAN_010	River	Louth County Council		Poor	Poor	Poor	Good	2022-2027	At risk	Chemical, Nutrients, Organic	UR	Flurry Ballymascanlan	LAWPRO, Restoration	View WB Page	View WB on EPA Water Map
6	UKGBNI1NB060603027	COUNTY WATER_010	River	Monaghan County Council		Poor	Moderate	Moderate	Good	2022-2027	At risk	Sediment, Nutrients, Organic	UR, Ag			View WB Page	View WB on EPA Water Map
6	UKGBNI1NB060608228	KILCURRY_010	River	Louth County Council		Good	Good	Good	Good	2021 or earlier	Review					View WB Page	View WB on EPA Water Map
6	UKGBNI1NB060608229	FANE_020	River	Monaghan County Council	NSA;	Unassigned	Moderate	Poor	Good	2022-2027	Review					View WB Page	View WB on EPA Water Map
6	UKGBNI1NB060608235	CULLY WATER_010	River	Louth County Council		Good	Moderate	Moderate	Good	2022-2027	At risk	Nutrients, Organic	Unknown			View WB Page	View WB on EPA Water Map
6	UKGBNI1NB060608246	CASTLETOWN_010	River	Louth County Council		Moderate	Moderate	Moderate	Good	2022-2027	Review			Castletown	LAWPRO, Restoration	View WB Page	View WB on EPA Water Map
6	UKGBNI1NB060608247	FLURRY_010	River	Louth County Council		Poor	Poor	Poor	Good	2022-2027	At risk	Chemical, Nutrients, Organic	Ag, UR	Flurry Ballymascanlan	LAWPRO, Restoration	View WB Page	View WB on EPA Water Map
6	UKGBNI1NB060608248	GENTLE OWEN'S LAKE STREAM_010	River	Monaghan County Council		Good	Good	Moderate	Good	2022-2027	At risk	Nutrients	Ag			View WB Page	View WB on EPA Water Map
6	UKGBNI1NB060608249	FANE_040	River	Monaghan County Council	DWPA;	Good	Moderate	Moderate	Good	2022-2027	At risk	Hydrological, Chemical	UR, Ab			View WB Page	View WB on EPA Water Map
6	UKGBNI1NB060608250	FANE_030	River	Monaghan County Council		Poor	Poor	Poor	Good	2022-2027	At risk	Nutrients	Ag			View WB Page	View WB on EPA Water Map
6	UKGBNI1NB060608251	RASKEAGH_010	River	Louth County Council	SAC; SPA;	Unassigned	Poor	Moderate	Good	2022-2027	Review			Flurry Ballymascanlan	LAWPRO, Restoration	View WB Page	View WB on EPA Water Map
6	UKGBNI1NB060608252	FLURRY_020	River	Louth County Council		Moderate	Moderate	Poor	Good	2022-2027	At risk	Morphological, Chemical, Nutrients, Organic	For, UR	Flurry Ballymascanlan	LAWPRO, Restoration	View WB Page	View WB on EPA Water Map
6	UKGBNI1NB060608253	GENTLE OWEN'S LAKE STREAM_020	River	Monaghan County Council		Moderate	Moderate	Moderate	Good	2022-2027	At risk	Nutrients	Ag	Oram Churchill GWS	NFGWS, Restoration	View WB Page	View WB on EPA Water Map
6	IE_NB_030_0200	Carlingford Lagoons	Transitional	Louth County Council		Unassigned	Unassigned	Unassigned	Good	Unknown	Review					View WB Page	View WB on EPA Water Map
6	IE_NB_030_0250	Shilties Lough	Transitional	Louth County Council	SAC;	Unassigned	Unassigned	Unassigned	Good	Unknown	Review					View WB Page	View WB on EPA Water Map
6	IE_NB_040_0100	Inner Dundalk Bay	Transitional	Louth County Council	SAC; SPA; SF; NSA;	Moderate	Moderate	Moderate	Good	2022-2027	At risk	Nutrients	UWW			View WB Page	View WB on EPA Water Map
6	IE_NB_040_0200	Castletown Estuary	Transitional	Louth County Council	SAC; SPA; NSA;	Moderate	Poor	Poor	Good	2022-2027	At risk	Nutrients, Organic	UWW			View WB Page	View WB on EPA Water Map
6	IE_NB_040_0300	Ballymascanlan Estuary	Transitional	Louth County Council	SAC; SPA; NSA;	Unassigned	Moderate	Moderate	Good	2022-2027	Review					View WB Page	View WB on EPA Water Map
6	IE_NB_040_0400	Fane Estuary	Transitional	Louth County Council	SAC; SPA; NSA;	Unassigned	Good	Moderate	Good	2022-2027	Review					View WB Page	View WB on EPA Water Map
6	IE_NB_040_0500	Glyde Estuary	Transitional	Louth County Council	SAC; SPA;	Unassigned	Good	Moderate	Good	2022-2027	Review					View WB Page	View WB on EPA Water Map
6	IE_NB_040_0600	Corstown Lagoon	Transitional	Louth County Council	SPA;	Unassigned	Unassigned	Unassigned	Good	Unknown	Review					View WB Page	View WB on EPA Water Map
6	UKGBNI5NB030010	Newry Estuary	Transitional	N.A.	SAC; SF;	Unassigned	Moderate	Unassigned	Good	Unknown	Review					View WB Page	View WB on EPA Water Map