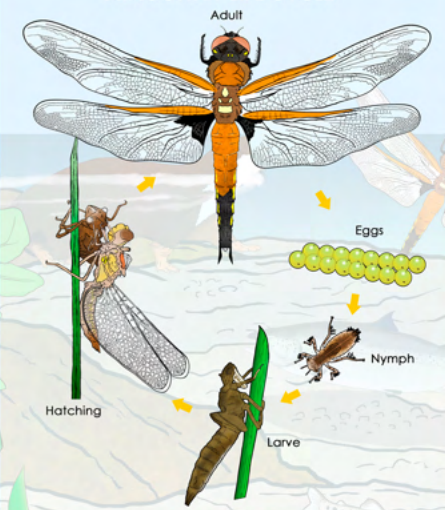
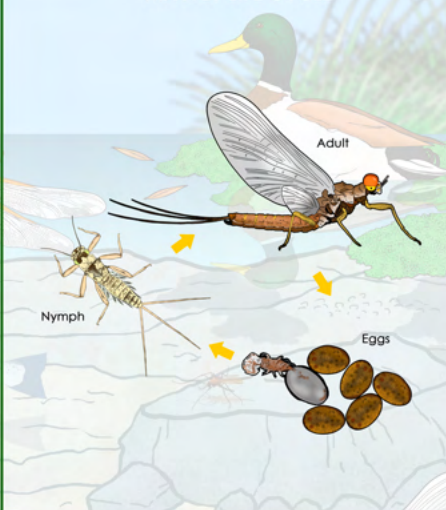


DRAGONFLY LIFE CYCLE



MAYFLY LIFE CYCLE



A lotic freshwater ecosystem

This is the story of the interactions of animals and plants that live in a river habitat. The Story of the River poster shows a very simple version of that habitat. The part played by insects in this and indeed other habitats is not well known or understood and it is the purpose of this poster to change that. All the higher animals, including fish, birds, bats and others depend, either directly or indirectly on these insects for food; thus, these insects have intrinsic importance. The word macroinvertebrates describes the organisms that live in the bed of a river and includes worms, snails, and beetles but we are just considering some flying insects common to all river sites. The macroinvertebrates that become flies are an important part of what makes a river habitat work.

River Species List

- | | | |
|---|------------------------------------|-----------------------------------|
| 1. Newly emerged Teneral Dragonfly | 1. Táinig snáithead mhór as larbha | 1. <i>Odonata/Epiprocna</i> sp. |
| 2. Eurasian Otter | 2. Madra uisce | 2. <i>Lutra lutra</i> |
| 3. Fully fledged dragonfly imago | 3. Snáithead mhór | 3. <i>Odonata/Epiprocna</i> sp. |
| 4. Mallard drake | 4. Mairéad | 4. <i>Anas platyrhynchos</i> |
| 5. Common Duckweed | 5. Ros kacán | 5. <i>Lemna minor</i> |
| 6. Dipper | 6. Gabha dubh | 6. <i>Cinclus cinclus</i> |
| 7. Daubenton's Bat | 7. Iallóg uisce | 7. <i>Myotis daubentonii</i> |
| 8. Moorhen | 8. Cearc uisce | 8. <i>Gallinula chloropus</i> |
| 9. Grey Wagtail | 9. Glasóg íath | 9. <i>Motacilla cinerea</i> |
| 10. Pied Wagtail | 10. Glasóg stráidhe | 10. <i>Motacilla alba yarelli</i> |
| 11. Adult Stonefly | 11. Snáithead buí | 11. <i>Plecoptera</i> |
| 12. Kingfisher | 12. Cúilín | 12. <i>Alcedo atthis</i> |
| 13. Non-biting Midge (Black gnat midge) | 13. Mialóg | 13. <i>Chironomid</i> |
| 14. Salmon | 14. Bradán | 14. <i>Salmo salar</i> |
| 15. Frog's-water-cress | 15. Ganna uisce | 15. <i>Aplum nodiflorum</i> |
| 16. Salmon parr | 16. Muóg bradáin | 16. <i>Salmo salar</i> |
| 17. Adult Mayfly | 17. Cúil bhealtaine | 17. <i>Ephemeroptera</i> |
| 18. Adult Sedge/Caddisfly | 18. Cúil chaodáin | 18. <i>Trichoptera</i> |
| 19. Water-Crowfoot | 19. Néal uisce coileann | 19. <i>Ranunculus</i> sp. |
| 20. Cane Heron | 20. Carr éisc | 20. <i>Ardea cinerea</i> |
| 21. Reed canary grass | 21. Cúiscreach | 21. <i>Phalaris arundinacea</i> |
| 22. Common reed | 22. Giolach | 22. <i>Phragmites australis</i> |
| 23. Caddisfly larva "Cased caddis" | 23. Cúil chaodáin Cásáidach | 23. <i>Trichoptera</i> |
| 24. Freshwater hog louse | 24. Mól uisce | 24. <i>Aesillus aquaticus</i> |
| 25. Brown trout | 25. Broóc nua | 25. <i>Salmo trutta</i> |
| 26. Non-biting Midge larva (Bloodworm) | 26. Nirfeach mialóg | 26. <i>Chironomid</i> |
| 27. Mayfly nymph | 27. Nirfeach cúil bhealtaine | 27. <i>Ephemeroptera</i> |
| 28. Mayfly egg | 28. Uibheacha cúil bhealtaine | 28. <i>Ephemeroptera</i> |
| 29. Dragonfly egg | 29. Uibheacha snáithead mhór | 29. <i>Odonata/Epiprocna</i> |
| 30. Dragonfly nymph | 30. Nirfeach snáithead mhór | 30. <i>Odonata/Epiprocna</i> |
| 31. Canadian Waterweed | 31. Fall uisce | 31. <i>Elodea canadensis</i> |
| 32. Dragonfly nymph climbing to hatch | 32. Snáithead mhór dreapadóreach! | 32. <i>Odonata/Epiprocna</i> |
| 33. Stonely newly hatched | 33. Táinig cúil as larbha | 33. <i>Plecoptera</i> |
| 34. Water-dropwort | 34. Dálbháha | 34. <i>Oenanthe</i> sp. |



The story of the river



catchments.ie shares science and stories about Ireland's water catchments, and people's connections to their water. Information about this poster can be found on catchments.ie

